

V&V Reference Report

L2 ASCDS Version : 10.4

Observation 17257 - L2 Version 1
Chandra X-Ray Center

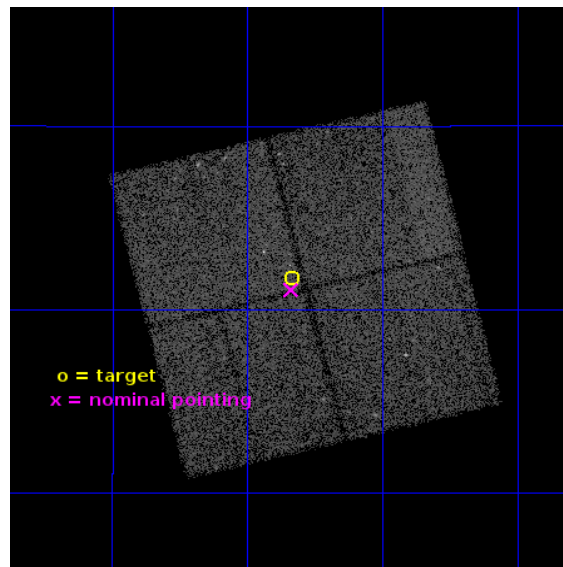
L2 Processing Date : Jun 5 2015

Contents

1	Front	2
2	OBI	3
2.1	OBI	3
2.1.1	Images	3
2.1.2	Bias	3
2.1.3	Parameters	4
2.1.4	Events	4
2.2	Compared Parameters	5
2.3	Aspect	6
2.4	Star Slots	9
2.4.1	Slot 3	9
2.4.2	Slot 4	10
2.4.3	Slot 5	11
2.4.4	Slot 6	12
2.4.5	Slot 7	13
2.5	FID Slots	14
2.5.1	Slot 0	14
2.5.2	Slot 1	15
2.5.3	Slot 2	16
A	Summary	17
A.1	Status	17
A.2	Comments	17

1 Front

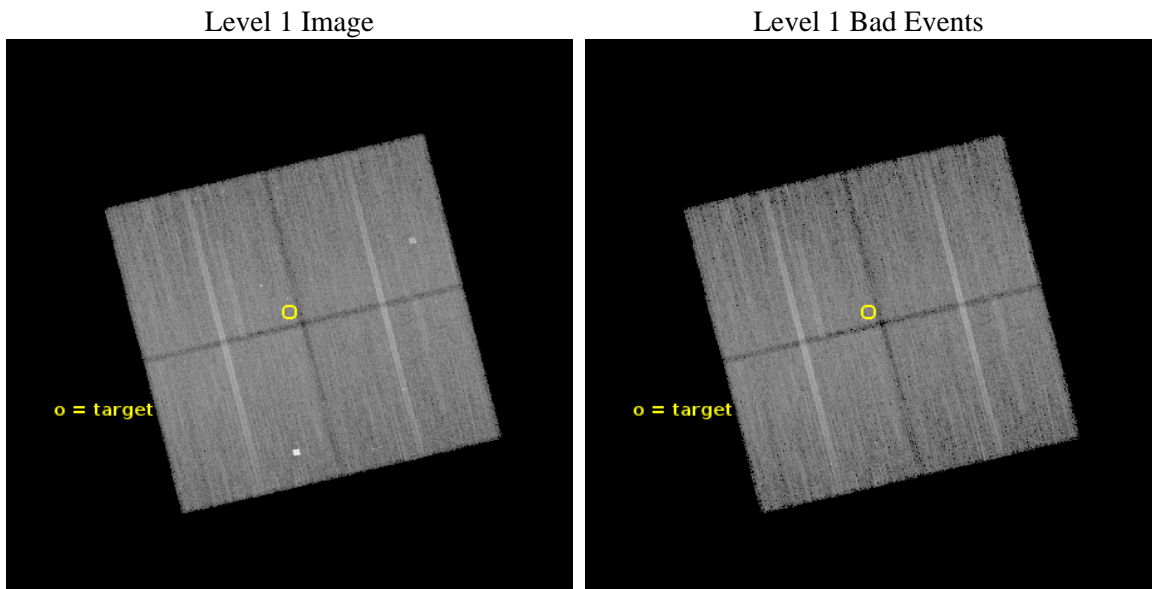
seq_num	201014	Sequence number
obs_id	17257	Observation id
title	The Chandra-Kepler Flare Survey	Proposal title
observer	Jeremy Drake	Principal investigator
object	Praesepe	Source name
dtcycle	0	
cycle	P	events from which exps? Prim/Second/Both
ra_targ	129.958333	Observer's specified target RA [deg]
dec_targ	19.528056	Observer's specified target Dec [deg]
ra_nom	129.95930206289	Nominal RA [deg]
dec_nom	19.518065235976	Nominal Dec [deg]
roll_nom	256.19239613301	Nominal Roll [deg]
revision	1	Processing version of data
ontime	48062.195258141	Sum of GTIs [s]
livetime	47434.22729422	Livetime [s]
ontime0	48068.477399349	Sum of GTIs [s]
ontime1	48074.759379745	Sum of GTIs [s]
ontime2	48074.759429574	Sum of GTIs [s]
ontime3	48062.195258141	Sum of GTIs [s]
l2events	97632	Number of level 2 events



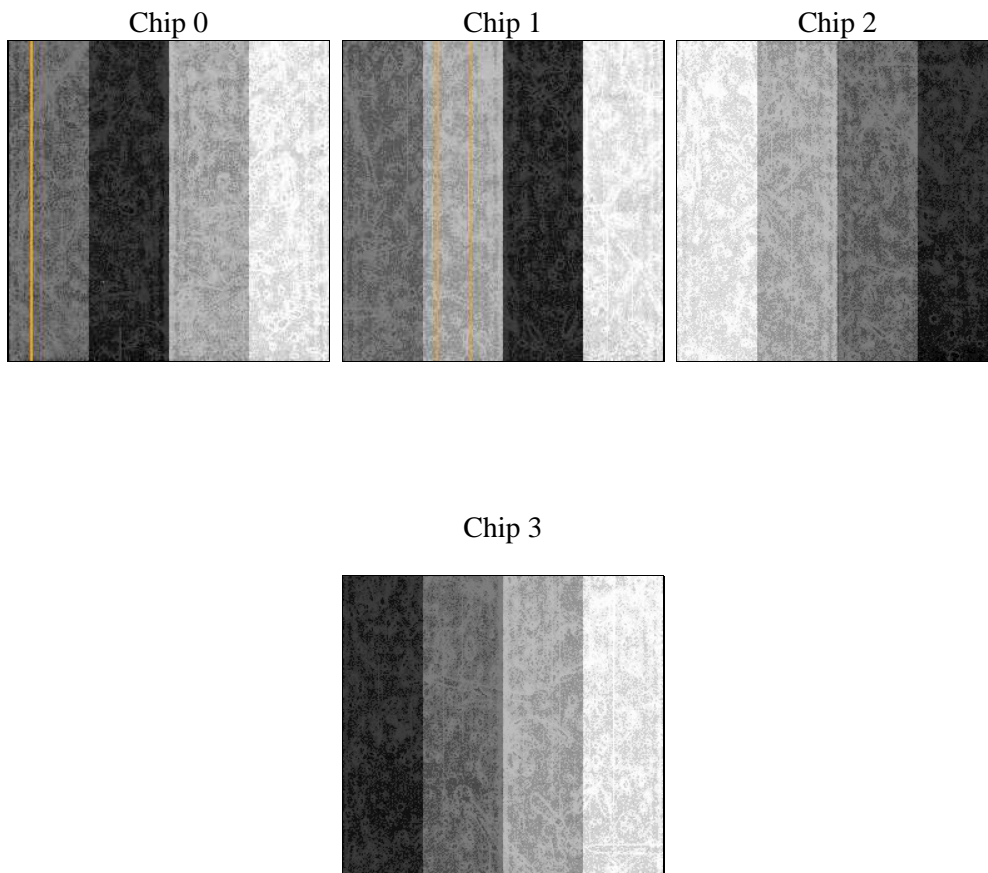
2 OBI

2.1 OBI

2.1.1 Images



2.1.2 Bias



2.1.3 Parameters

obi_num	0	Obi number	sched_exp_time	48000.000000	[s] Scheduled observation exposure time
ascdsver	10.4	Processing system revision	ontime	48062.195258141	Sum of GTIs [s]
caldbver	4.6.7	 	ontime0	48068.477399349	Sum of GTIs [s]
date	2015-06-05T16:22:32	Date and time of file creation	ontime1	48074.759379745	Sum of GTIs [s]
revision	1	Processing version of data	ontime2	48074.759429574	Sum of GTIs [s]
			ontime3	48062.195258141	Sum of GTIs [s]
			l1events	976212	Number of level 1 events

2.1.4 Events

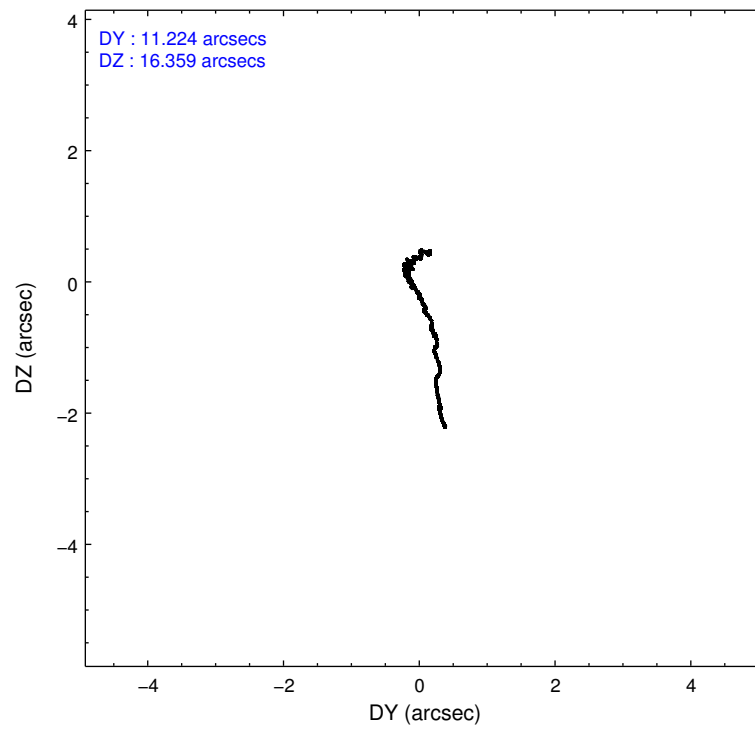
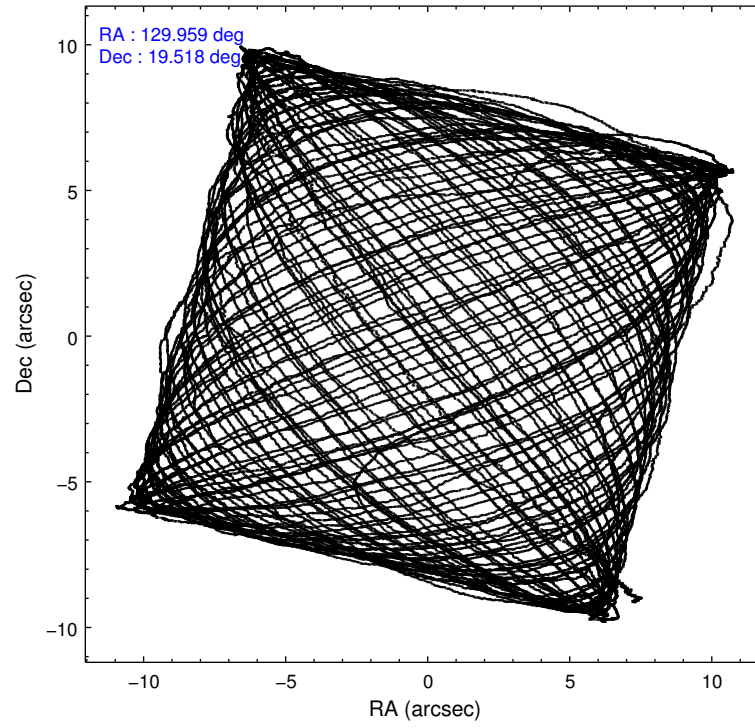
	ccd 0	ccd 1	ccd 2	ccd 3
level 1 events	229075	232190	267373	247574
rejected events	200509	198922	225188	218399
rejected %	87%	85%	84%	88%

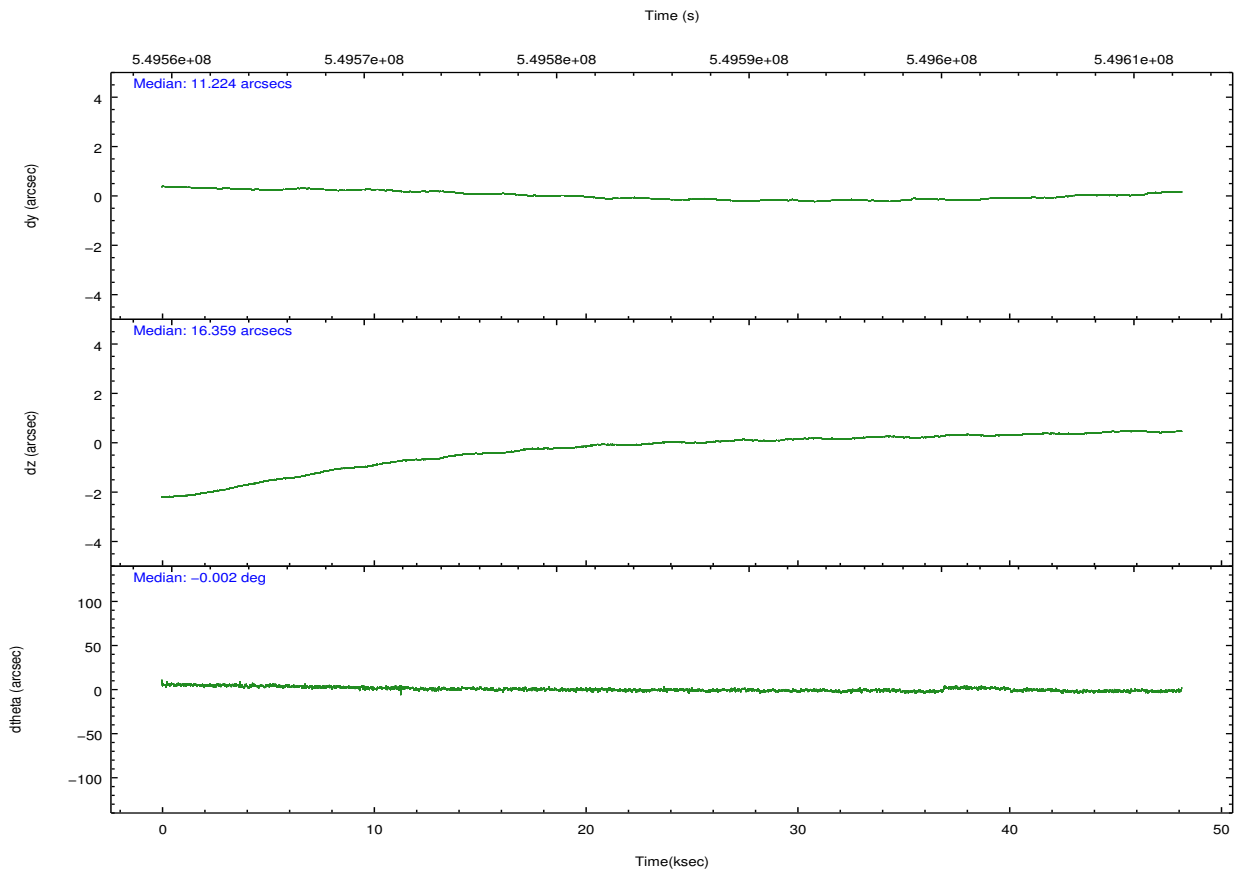
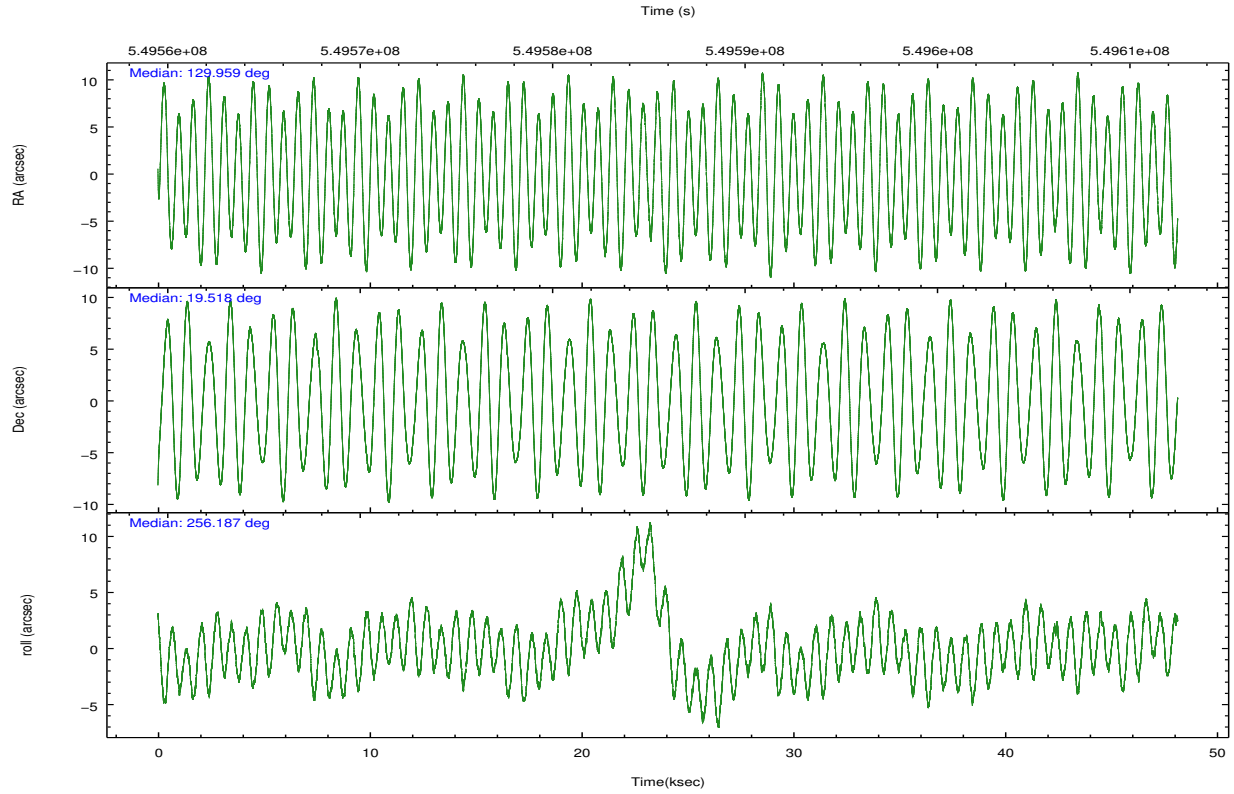
	ccd 0	ccd 1	ccd 2	ccd 3
grade 0 events	9909	12498	24380	11270
	4%	5%	9%	4%
grade 1 events	139	138	160	170
	0%	0%	0%	0%
grade 2 events	7095	7768	6896	6258
	3%	3%	2%	2%
grade 3 events	2996	3084	2741	2926
	1%	1%	1%	1%
grade 4 events	2759	3060	2792	3042
	1%	1%	1%	1%
grade 5 events	11234	11962	10426	12919
	4%	5%	3%	5%
grade 6 events	5809	6859	5381	5680
	2%	2%	2%	2%
grade 7 events	189134	186821	214597	205309
	82%	80%	80%	82%

2.2 Compared Parameters

Parameter	Planned	Actual	Parameter	Planned	Actual
Instrument	ACIS	ACIS	Obspar format version number	7	7
Detector	ACIS-0123	ACIS-0123	Obspar file type	PREDICTED	ACTUAL
Grating	NONE	NONE	Obspar update status	NONE	UPDATED
Data mode	VFAINT	VFAINT	Number of optional ACIS chips dropped	0	0
Observation mode	POINTING	POINTING	On-chip summing requested	N	N
[deg] Pointing RA	129.951032	129.9593020628919	Subarray requested	NONE	NONE
[deg] Pointing Dec	19.544541	19.51806523597618	Alternating exposures requested	N	N
[deg] Pointing Roll	255.986468	256.1923961330072	[s] Primary exposure time	0.000000	3.1
[s] Window start time (MET)	546566467.184000	546566467.184000			
[s] Window stop time (MET)	550195267.184000	550195267.184000			
[mm] SIM focus pos	-0.782348	-0.7809083437167272			
[mm] SIM defocus	0	0.001439871863259334			
[mm] SIM translation stage pos	-233.592463	-233.5874344608287			
[mm] SIM translation stage offset	0	-0.005018542100998502			
[s] Observation start time (MET)	549562039.184000	549560807.4601901			
Observation start date	2015-06-01T16:06:12	2015-06-01T15:46:47			
[s] Observation end time (MET)	549610039.184000	549611037.58801			
Observation end date	2015-06-02T05:26:12	2015-06-02T05:43:57			
Read mode	TIMED	TIMED			

2.3 Aspect





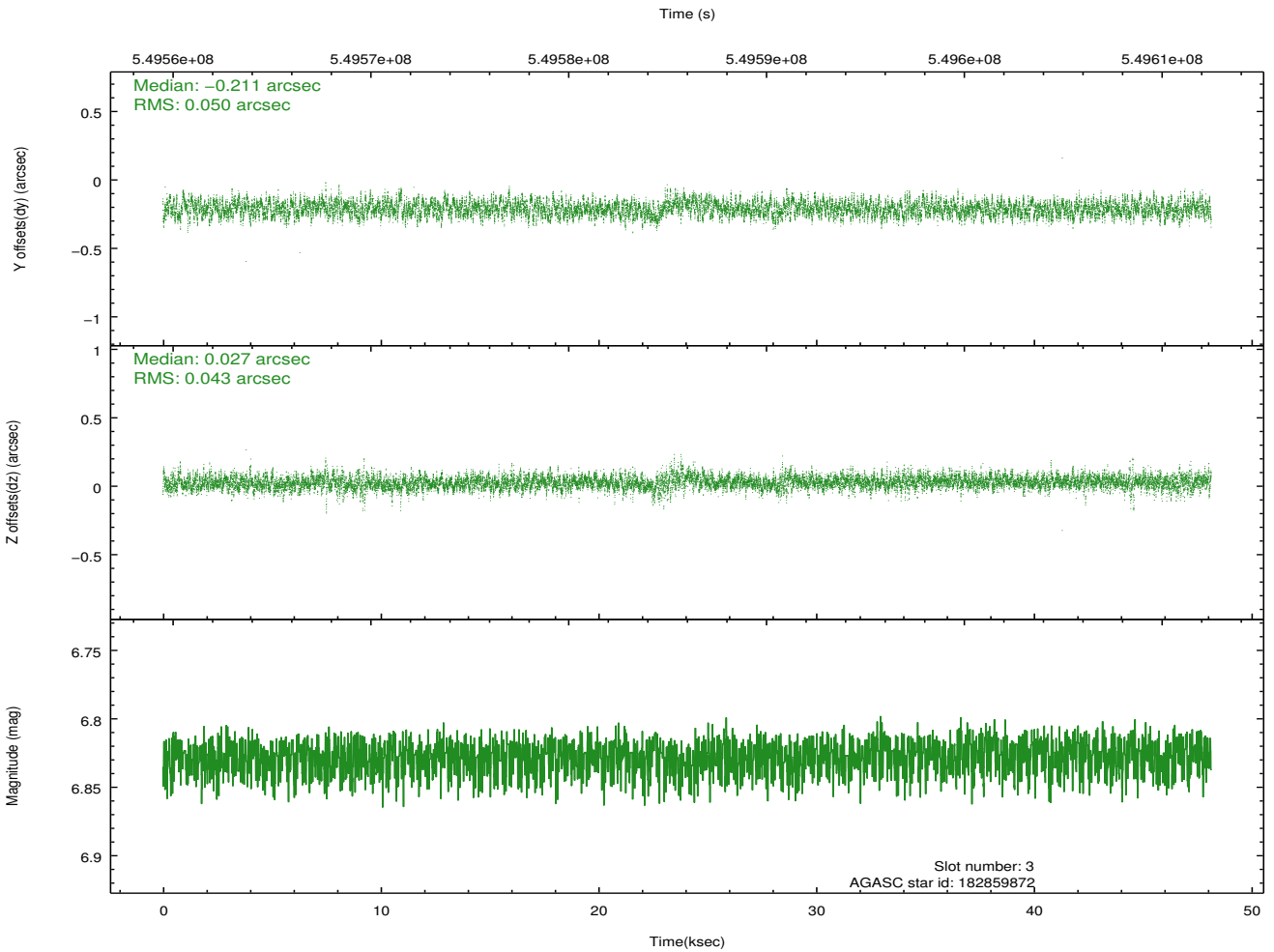
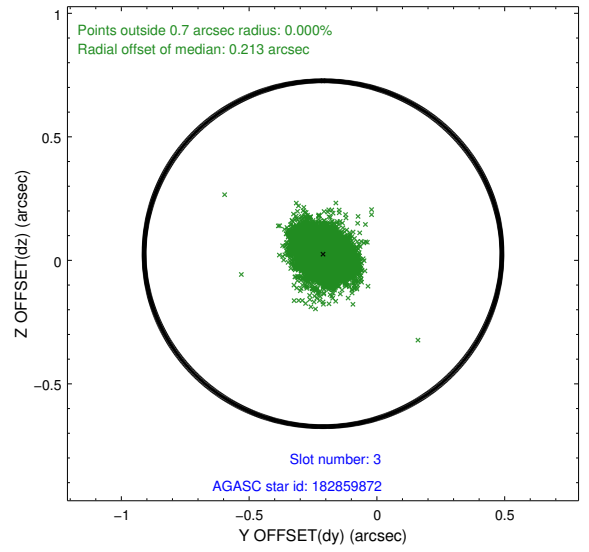
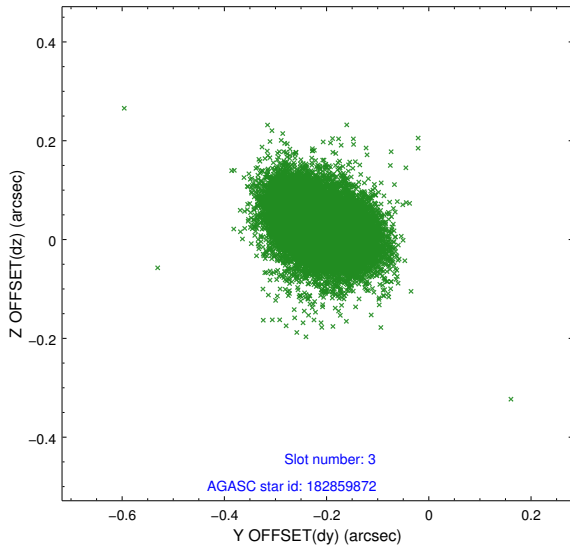
Slot Statistics

slot	status	used	id	mag	n_pts	med_dy	med_dz	dr1	dr2	ra	dec	mean_y	mean_z
0	FID		ACIS-I-1	7.11	11743	-0.013	-0.017	0.024	0.106	0.000000	0.000000	928.31	-839.68
1	FID		ACIS-I-2	7.01	11744	-0.210	-0.067	0.015	0.051	0.000000	0.000000	-765.99	-846.20
2	FID		ACIS-I-4	7.03	11742	0.126	0.149	0.017	0.053	0.000000	0.000000	2148.33	1060.27
3	GUIDE	used	182859872	6.83	23488	-0.211	0.027	0.069	0.114	130.458669	19.874169	-1569.74	1379.20
4	GUIDE	used	182861632	7.07	23488	0.001	-0.153	0.079	0.128	130.083935	19.348995	574.00	608.16
5	GUIDE	used	182863216	7.10	23487	0.195	0.024	0.084	0.145	129.444846	19.267218	1383.73	-1427.93
6	GUIDE	used	182864008	8.12	23482	0.046	-0.052	0.090	0.146	130.163501	19.228293	929.90	976.05
7	GUIDE	used	183240984	7.97	23485	-0.032	0.156	0.072	0.120	129.596337	20.207321	-2025.60	-1740.30

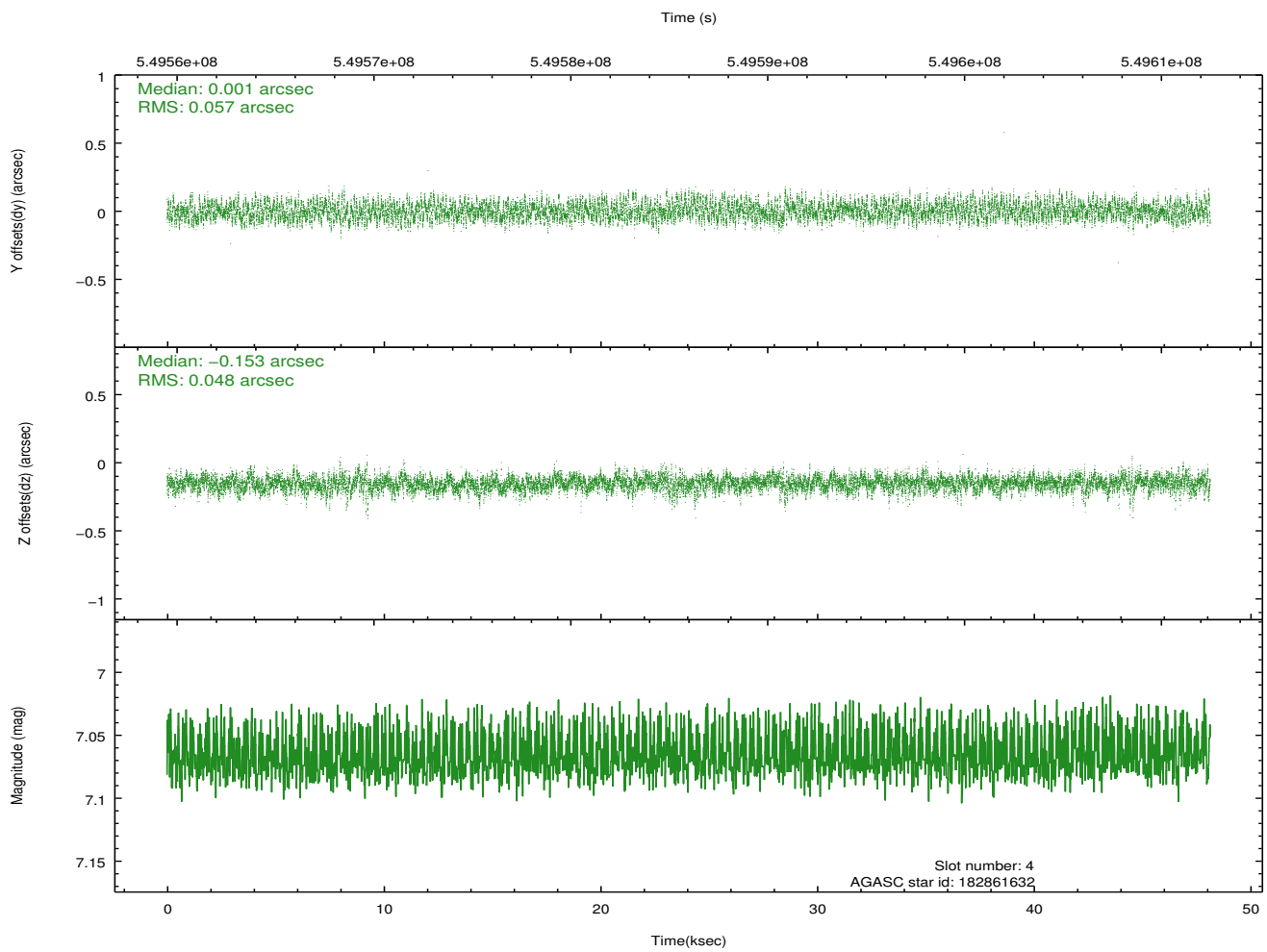
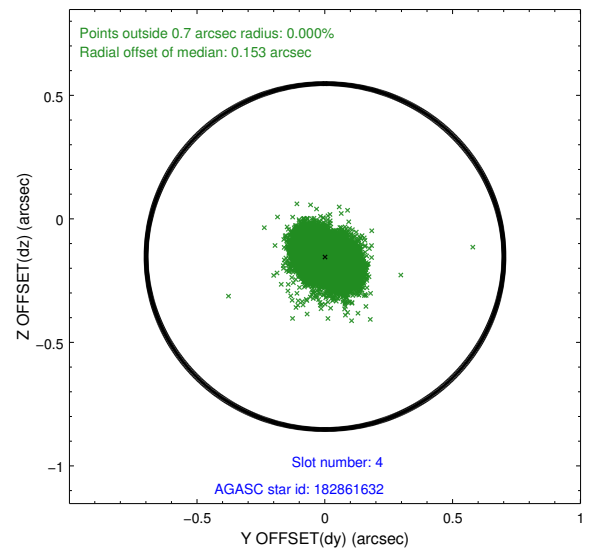
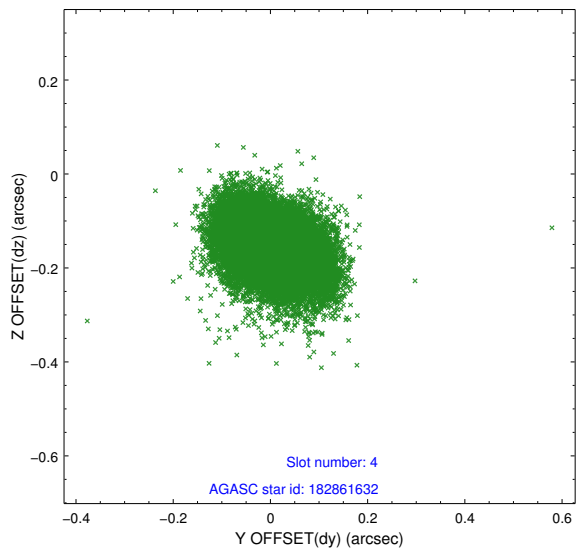
∞

2.4 Star Slots

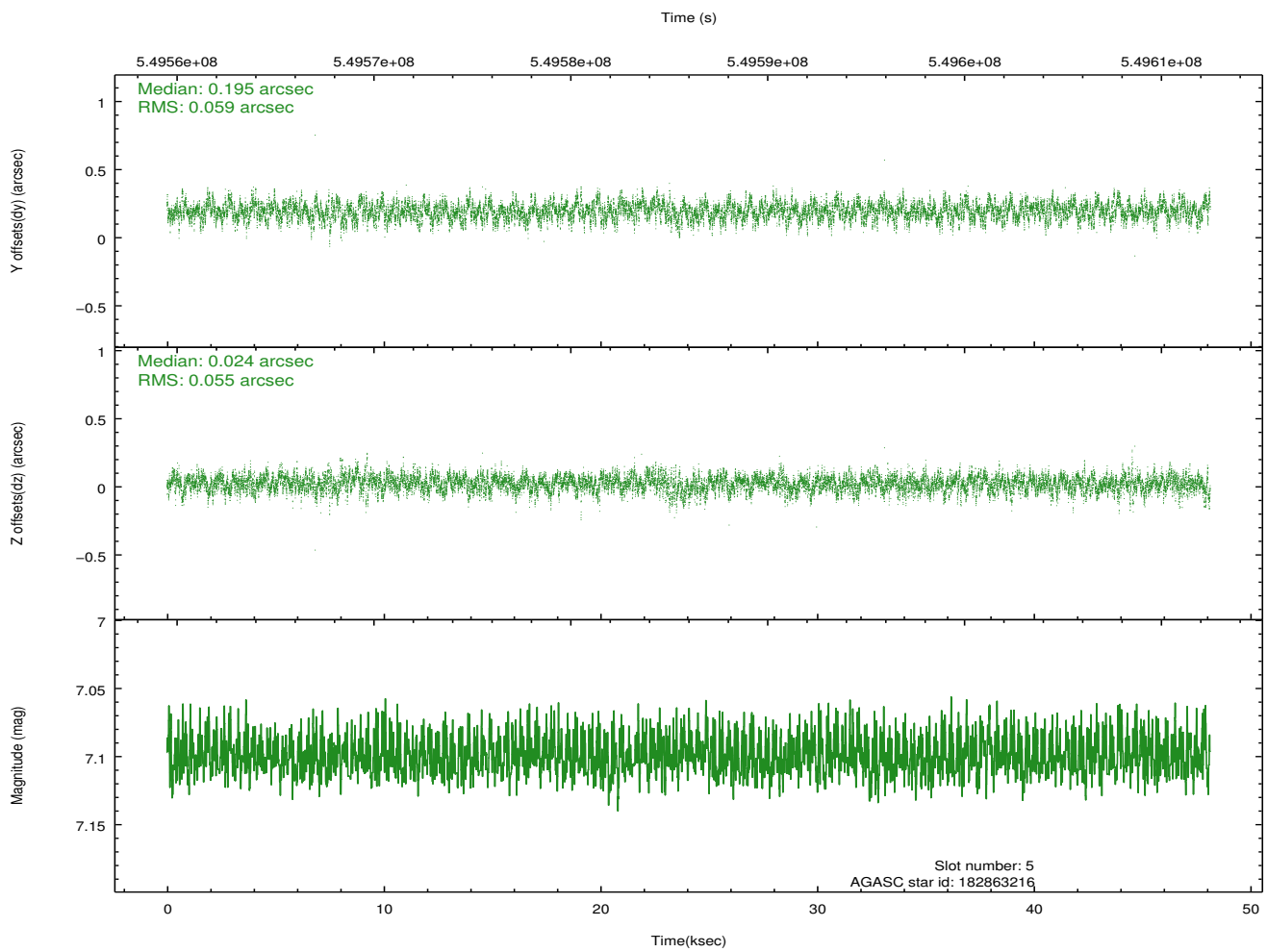
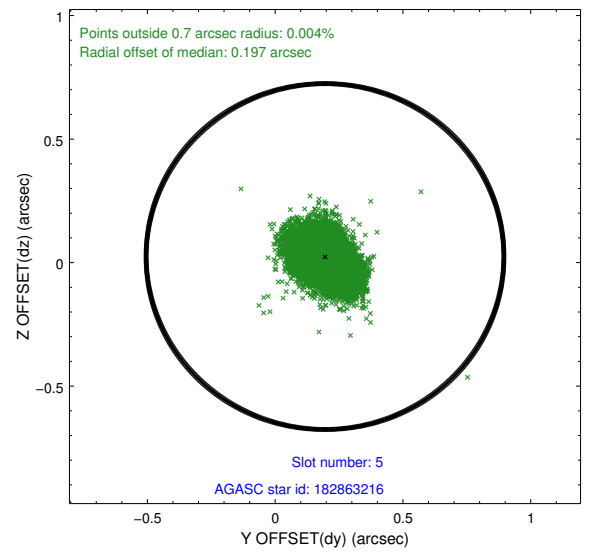
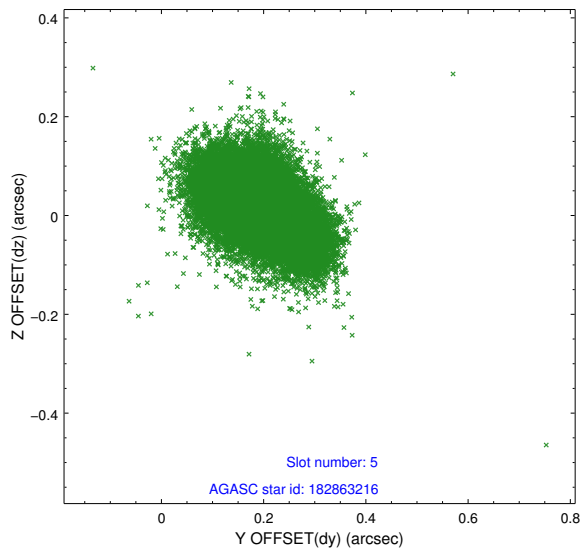
2.4.1 Slot 3



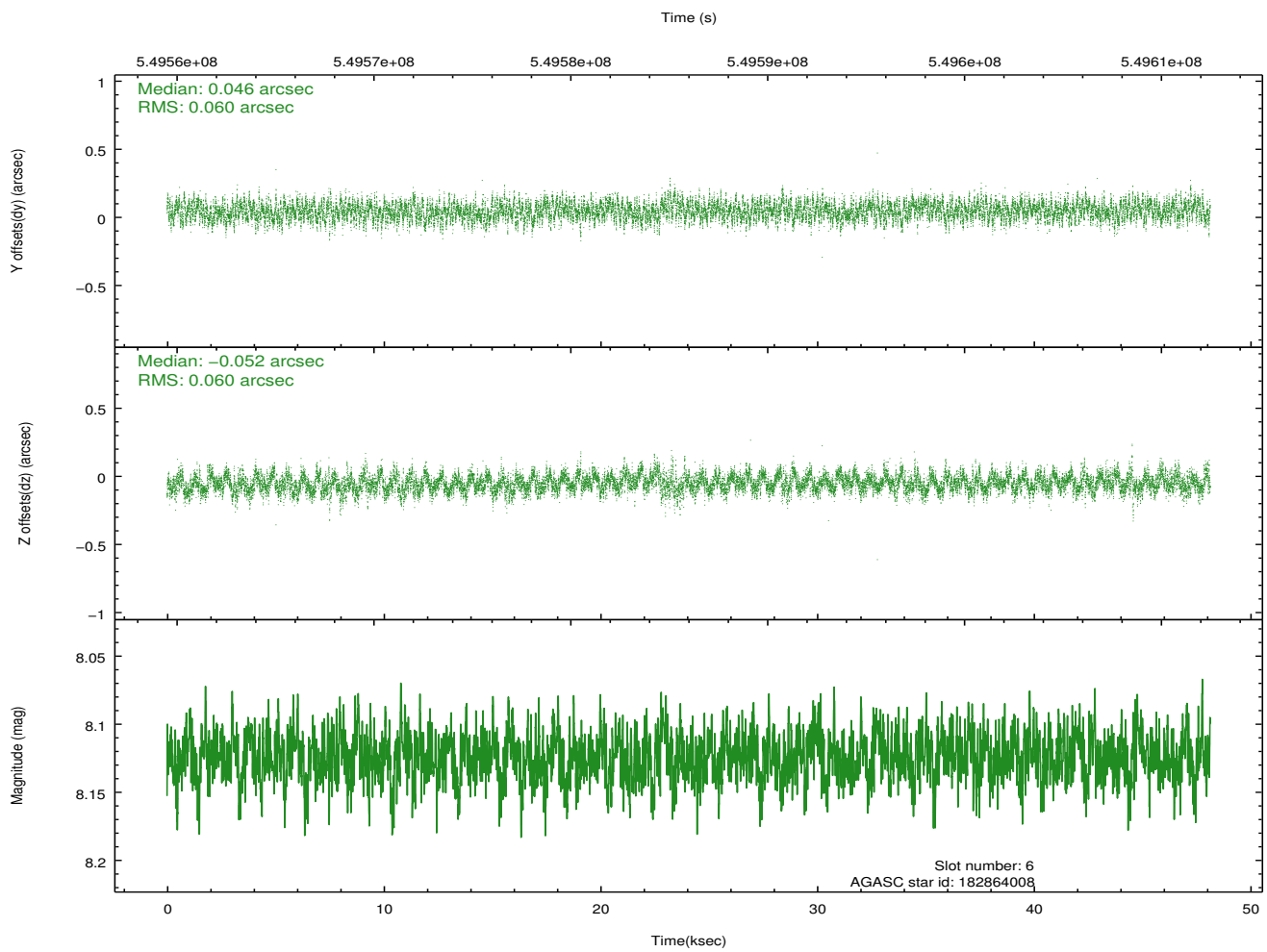
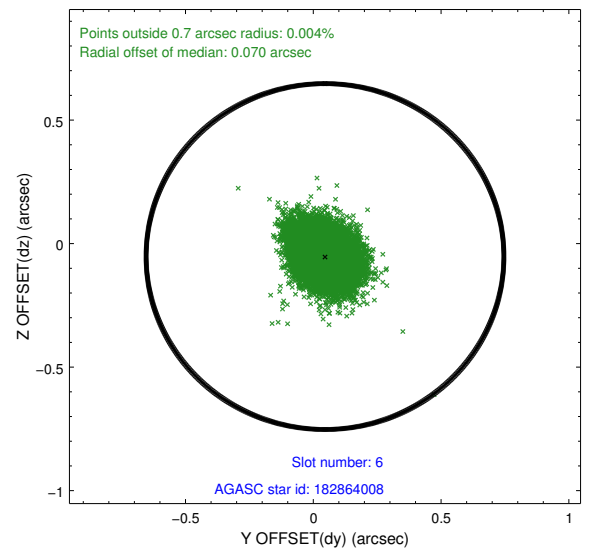
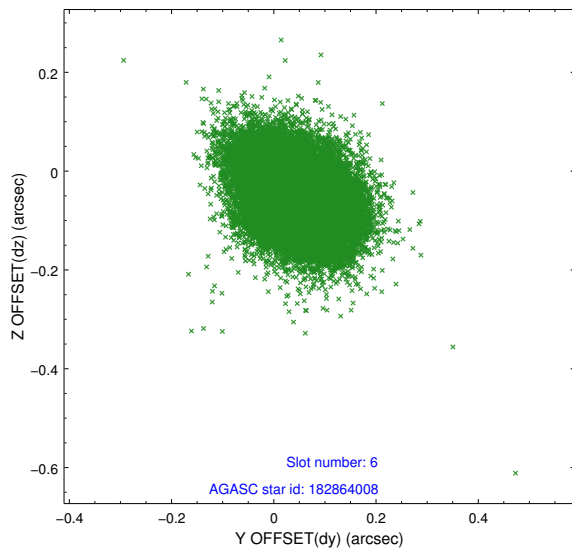
2.4.2 Slot 4



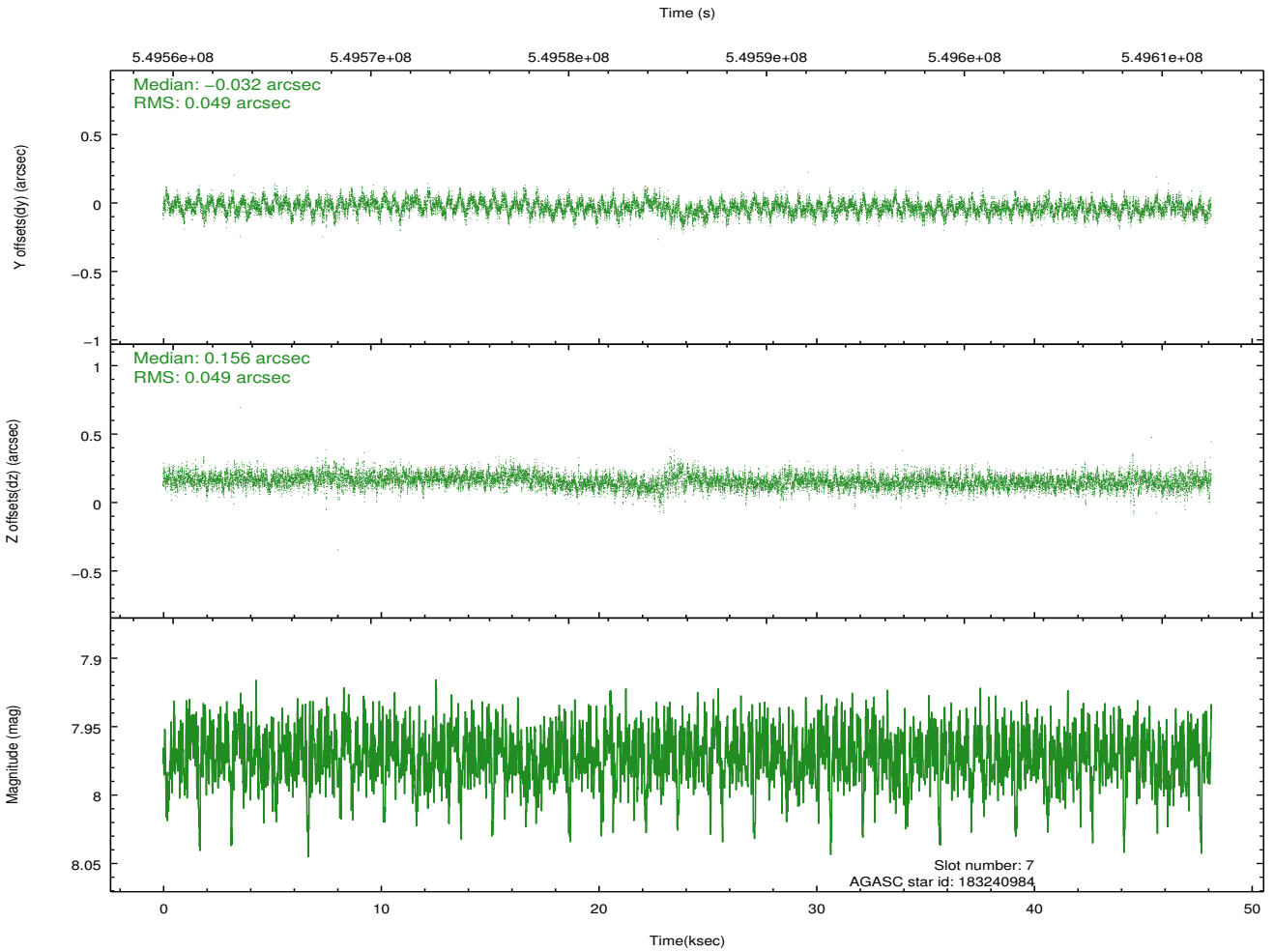
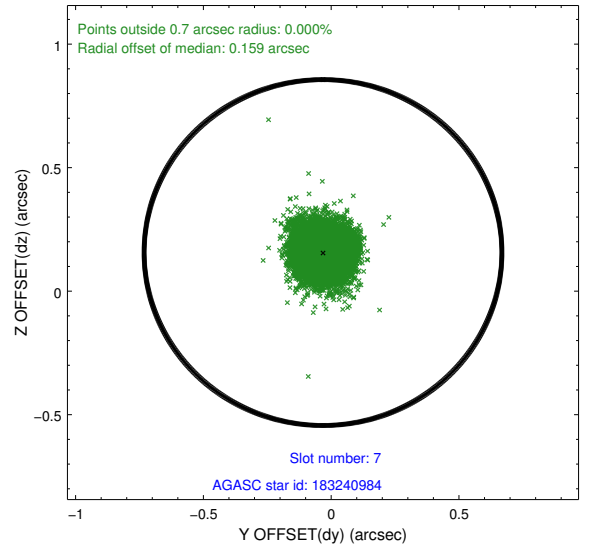
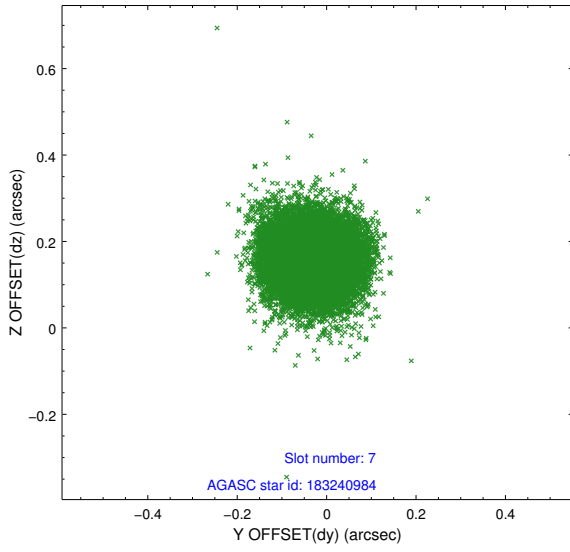
2.4.3 Slot 5



2.4.4 Slot 6

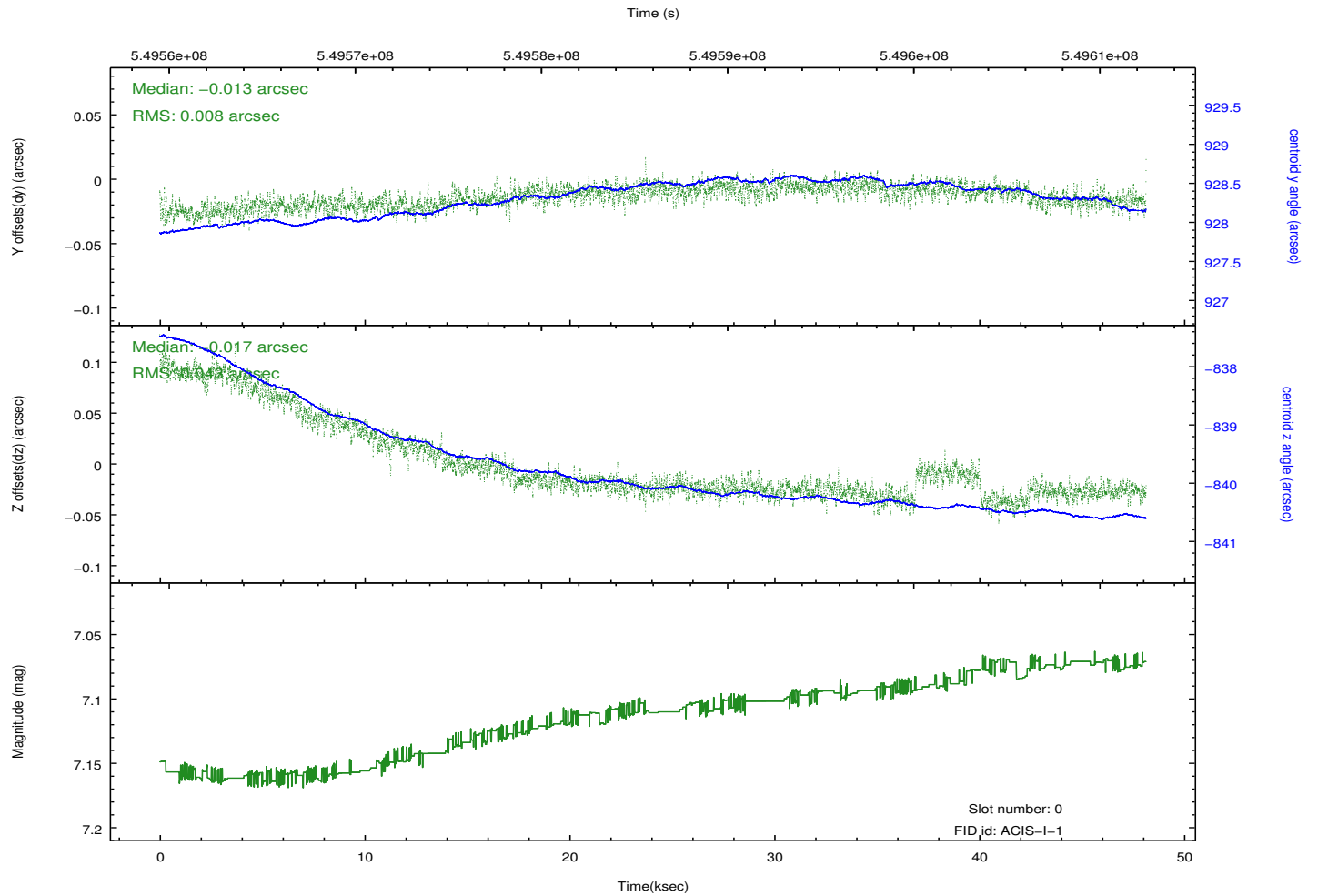
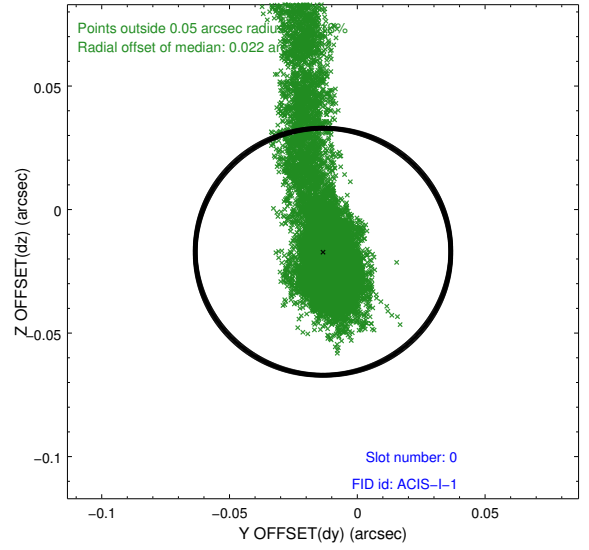
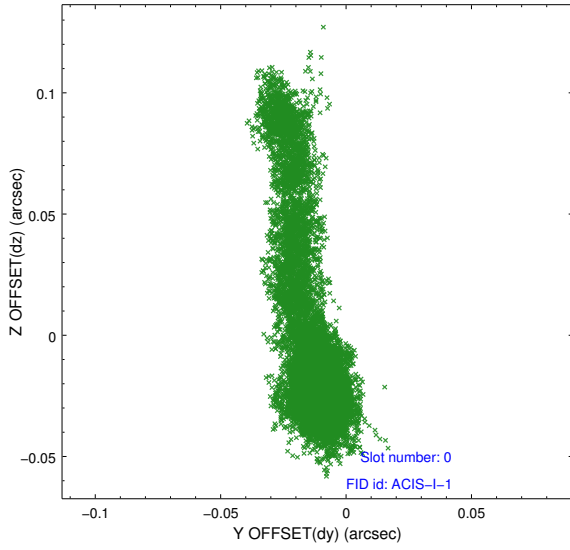


2.4.5 Slot 7

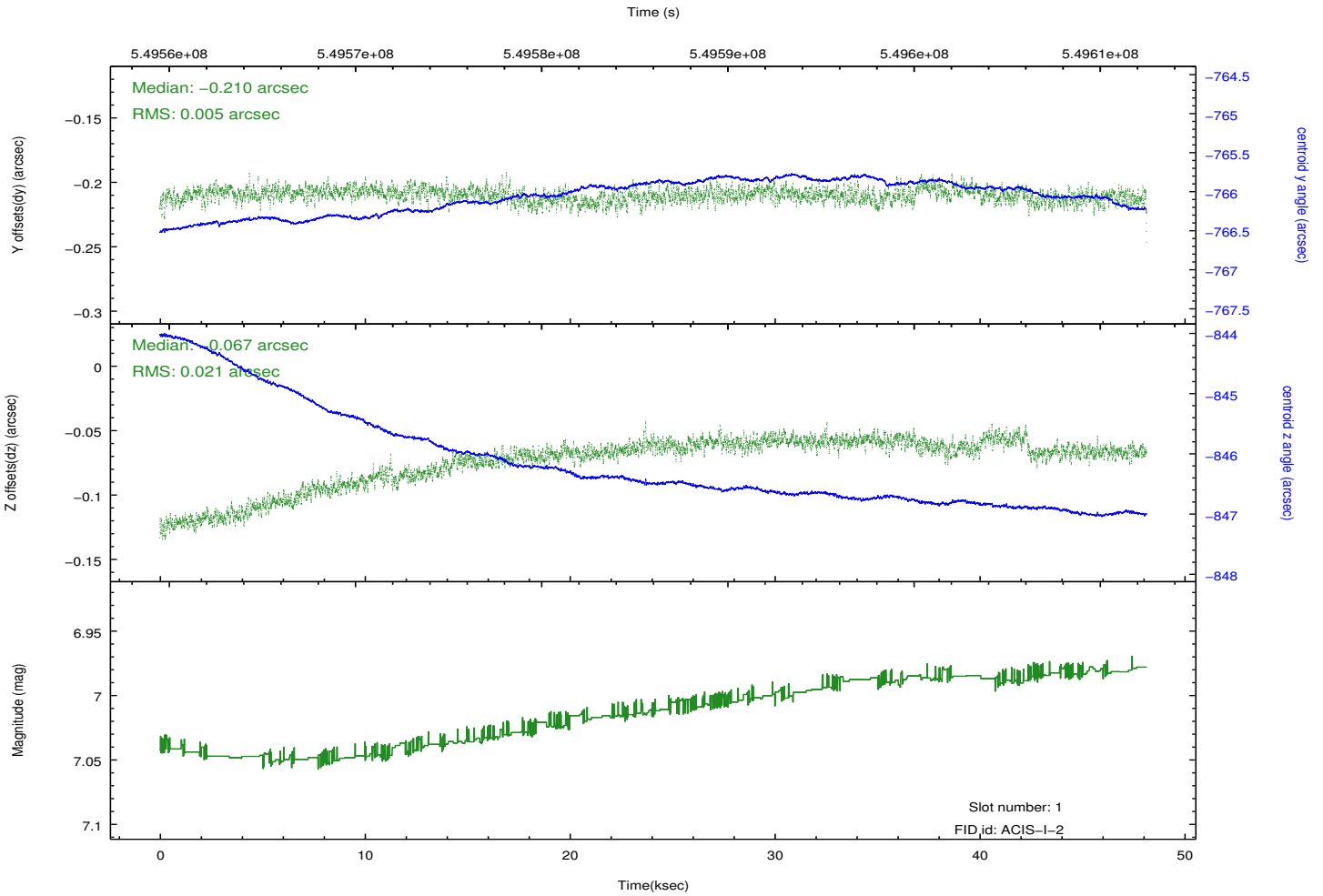
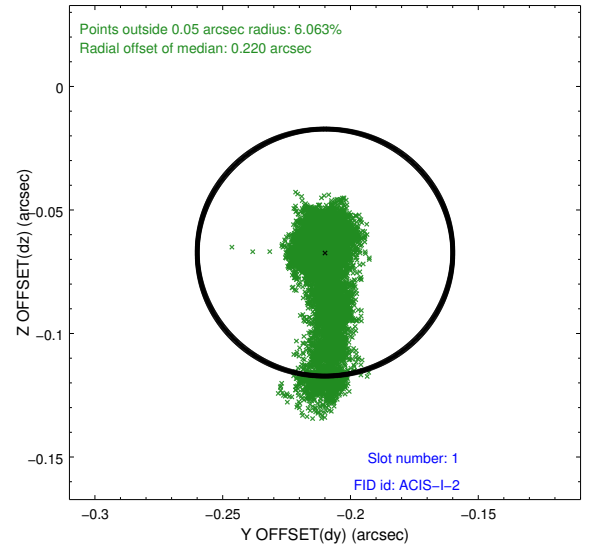
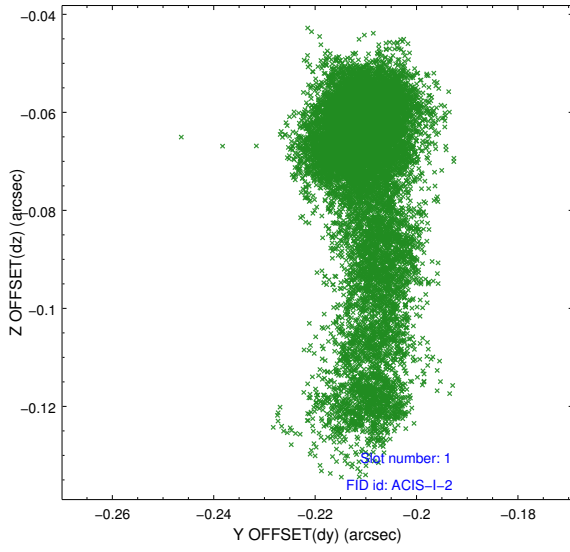


2.5 FID Slots

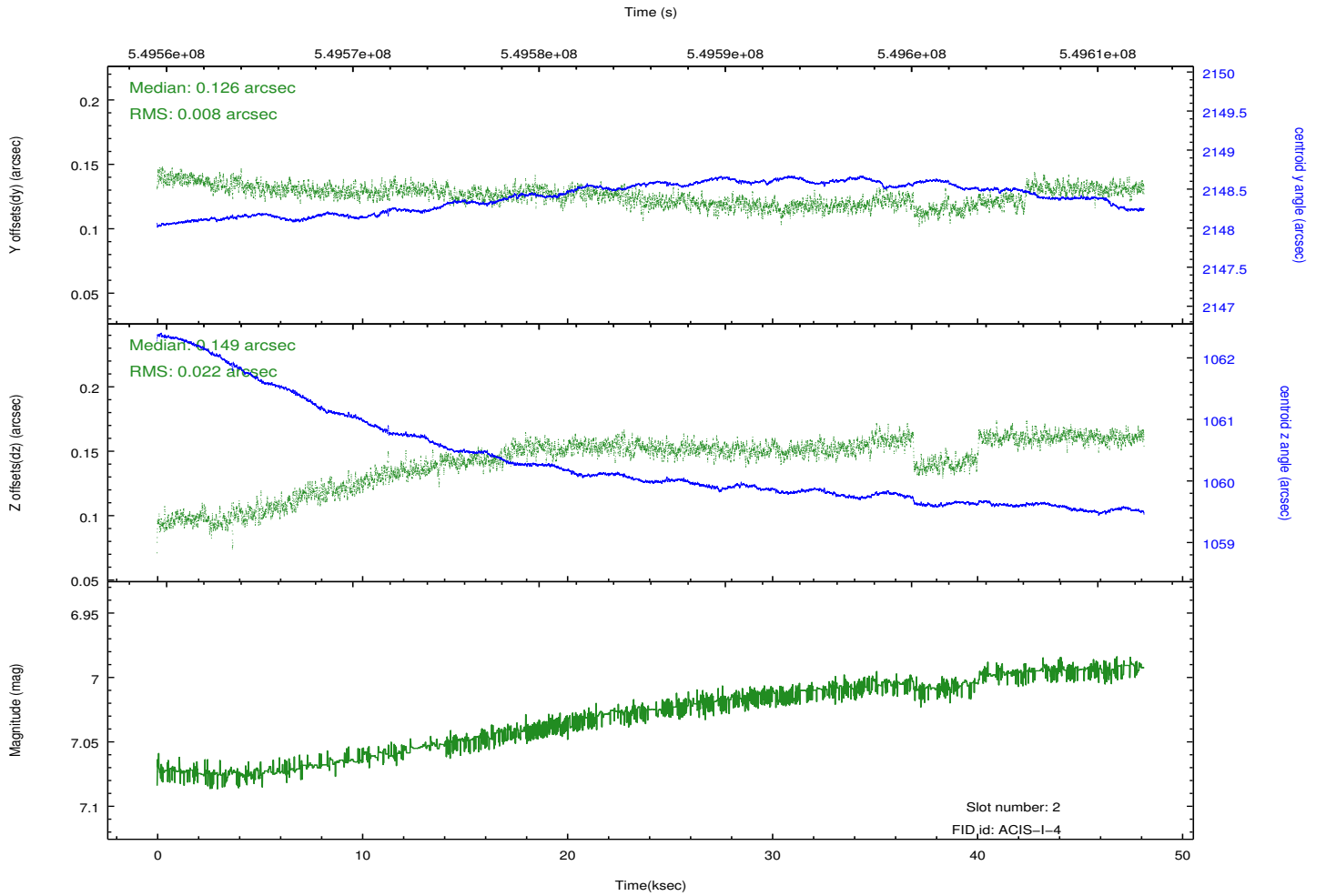
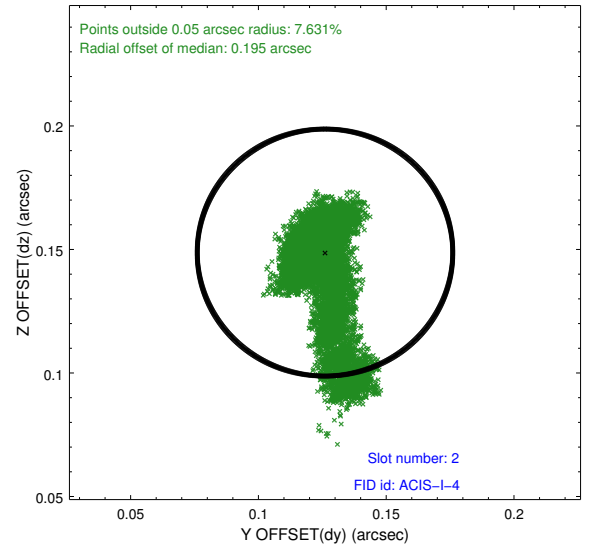
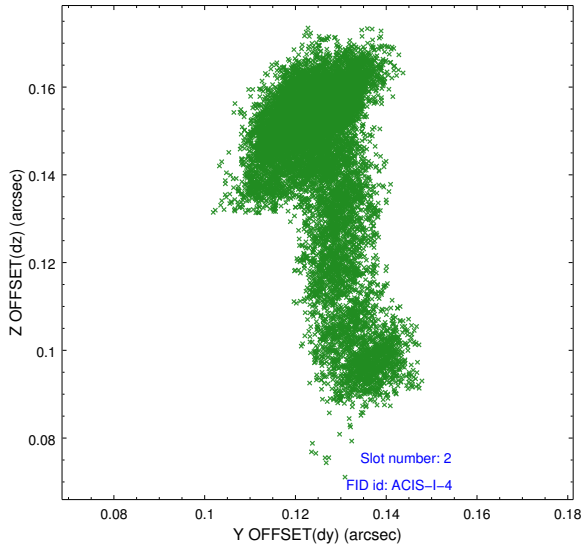
2.5.1 Slot 0



2.5.2 Slot 1



2.5.3 Slot 2



A Summary

A.1 Status

V&V Scientist	Jen Lauer
V&V Date (YYYY-MM-DD)	2015.06.05
V&V Edition	1
V&V Disposition and Status	OK
V&V Charge Time	48.062195258141

A.2 Comments

Window constraint met.