

V&V Reference Report

L2 ASCDS Version : 10.4.3.1

Observation 18427 - L2 Version 1
Chandra X-Ray Center

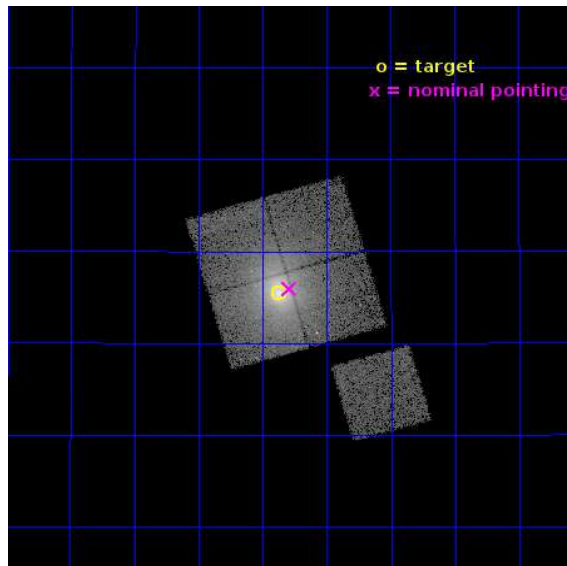
L2 Processing Date : Apr 9 2016

Contents

1	Front	2
2	OBI	3
2.1	OBI	3
2.1.1	Images	3
2.1.2	Bias	3
2.1.3	Parameters	4
2.1.4	Events	4
2.2	Compared Parameters	5
2.3	Aspect	6
2.4	Star Slots	9
2.4.1	Slot 3	9
2.4.2	Slot 4	10
2.4.3	Slot 5	11
2.4.4	Slot 6	12
2.4.5	Slot 7	13
2.5	FID Slots	14
2.5.1	Slot 0	14
2.5.2	Slot 1	15
2.5.3	Slot 2	16
A	Summary	17
A.1	Status	17
A.2	Comments	17

1 Front

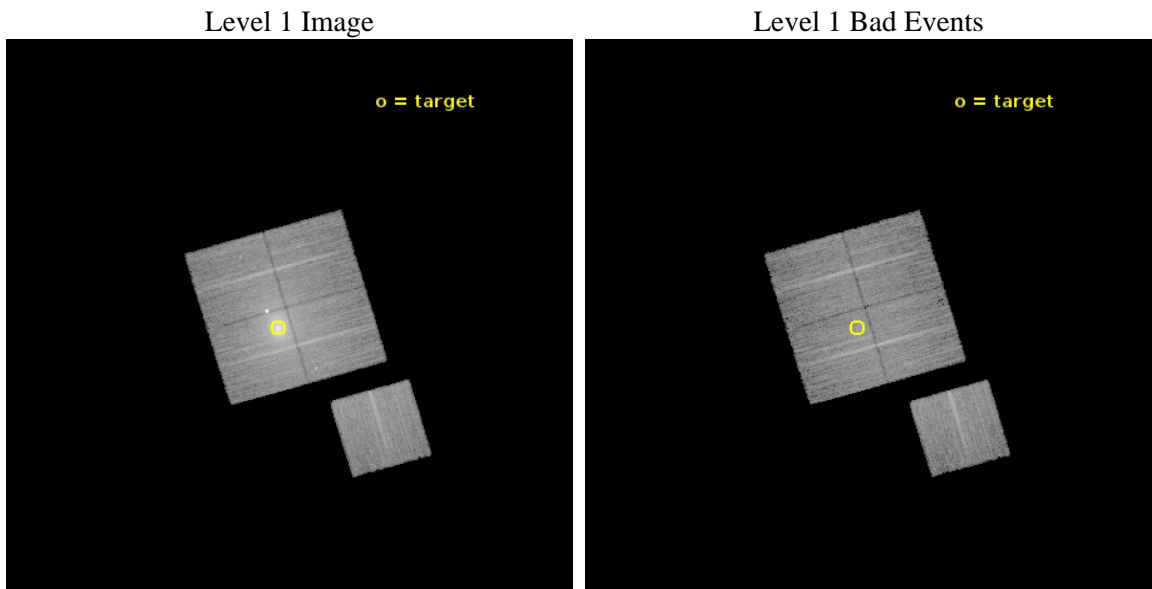
seq_num	890120	Sequence number
obs_id	18427	Observation id
title	AO-17 Calibration Observations of A1795	Proposal title
observer	Dr. CXC Calibration	Principal investigator
object	A1795	Source name
dtcycle	0	
cycle	P	events from which exps? Prim/Second/Both
ra_targ	207.219583	Observer's specified target RA [deg]
dec_targ	26.590833	Observer's specified target Dec [deg]
ra_nom	207.19804217947	Nominal RA [deg]
dec_nom	26.598995471004	Nominal Dec [deg]
roll_nom	163.6532526169	Nominal Roll [deg]
revision	1	Processing version of data
ontime	15053.600115895	Sum of GTIs [s]
livetime	14856.913748082	Livetime [s]
ontime0	15053.600115895	Sum of GTIs [s]
ontime1	15053.600115895	Sum of GTIs [s]
ontime2	15053.600115895	Sum of GTIs [s]
ontime3	15053.600115895	Sum of GTIs [s]
ontime6	15053.600115895	Sum of GTIs [s]
l2events	143134	Number of level 2 events



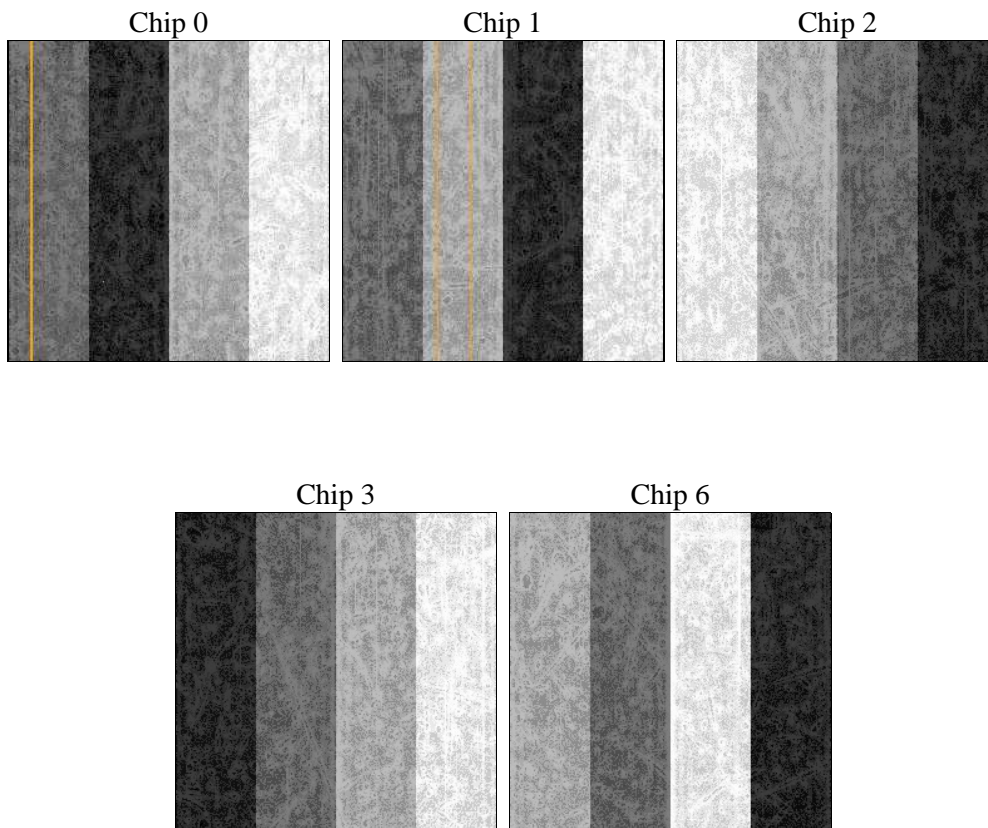
2 OBI

2.1 OBI

2.1.1 Images



2.1.2 Bias



2.1.3 Parameters

obi_num	0	Obi number	sched_exp_time	15000.000000	[s] Scheduled observation exposure time
ascdsver	10.4.3.1	Processing system revision	ontime	15053.600115895	Sum of GTIs [s]
caldbver	4.7.1	 	ontime0	15053.600115895	Sum of GTIs [s]
date	2016-04-09T12:25:36	Date and time of file creation	ontime1	15053.600115895	Sum of GTIs [s]
revision	1	Processing version of data	ontime2	15053.600115895	Sum of GTIs [s]
			ontime3	15053.600115895	Sum of GTIs [s]
			ontime6	15053.600115895	Sum of GTIs [s]
			l1events	579272	Number of level 1 events

2.1.4 Events

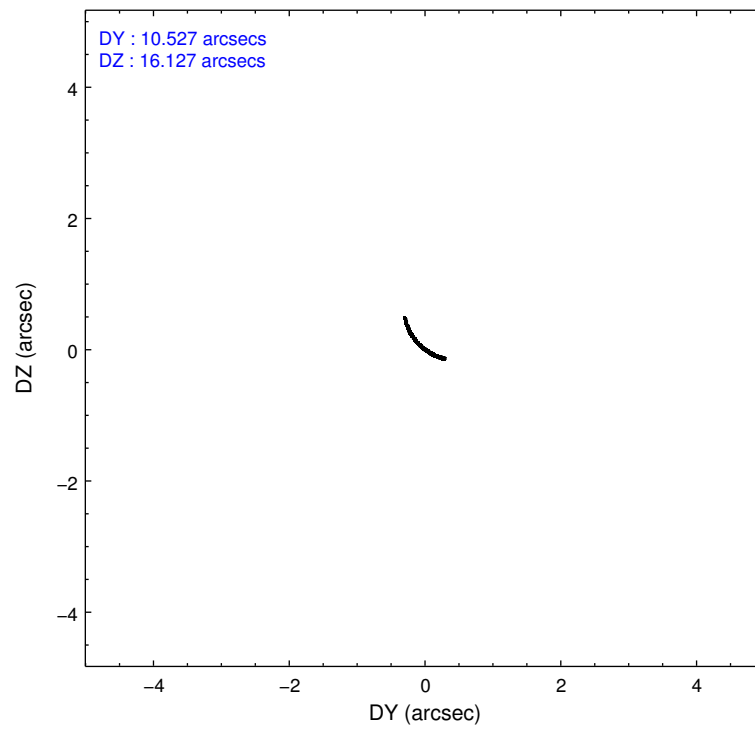
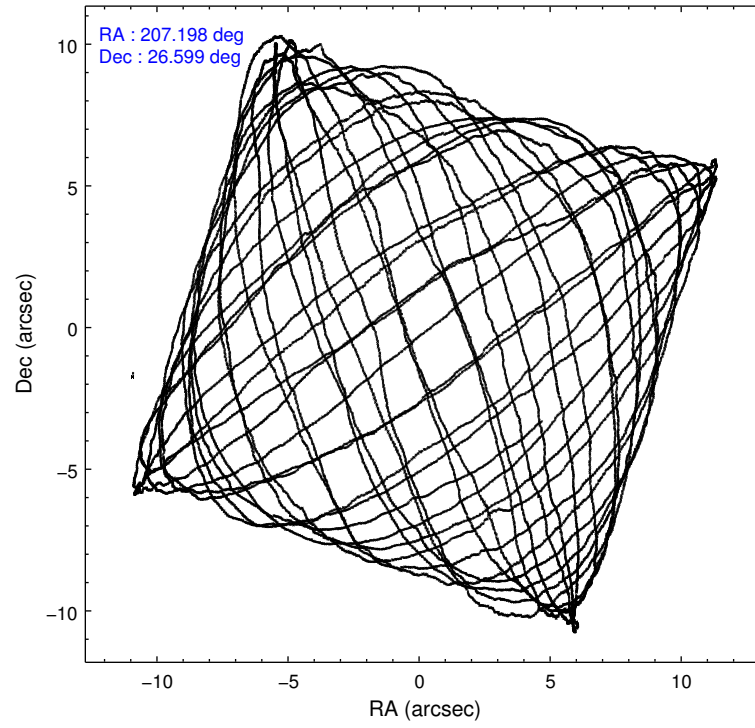
	ccd 0	ccd 1	ccd 2	ccd 3	ccd 6
level 1 events	92186	106380	114309	167958	98439
rejected events	76286	77630	90942	87399	87610
rejected %	82%	72%	79%	52%	88%

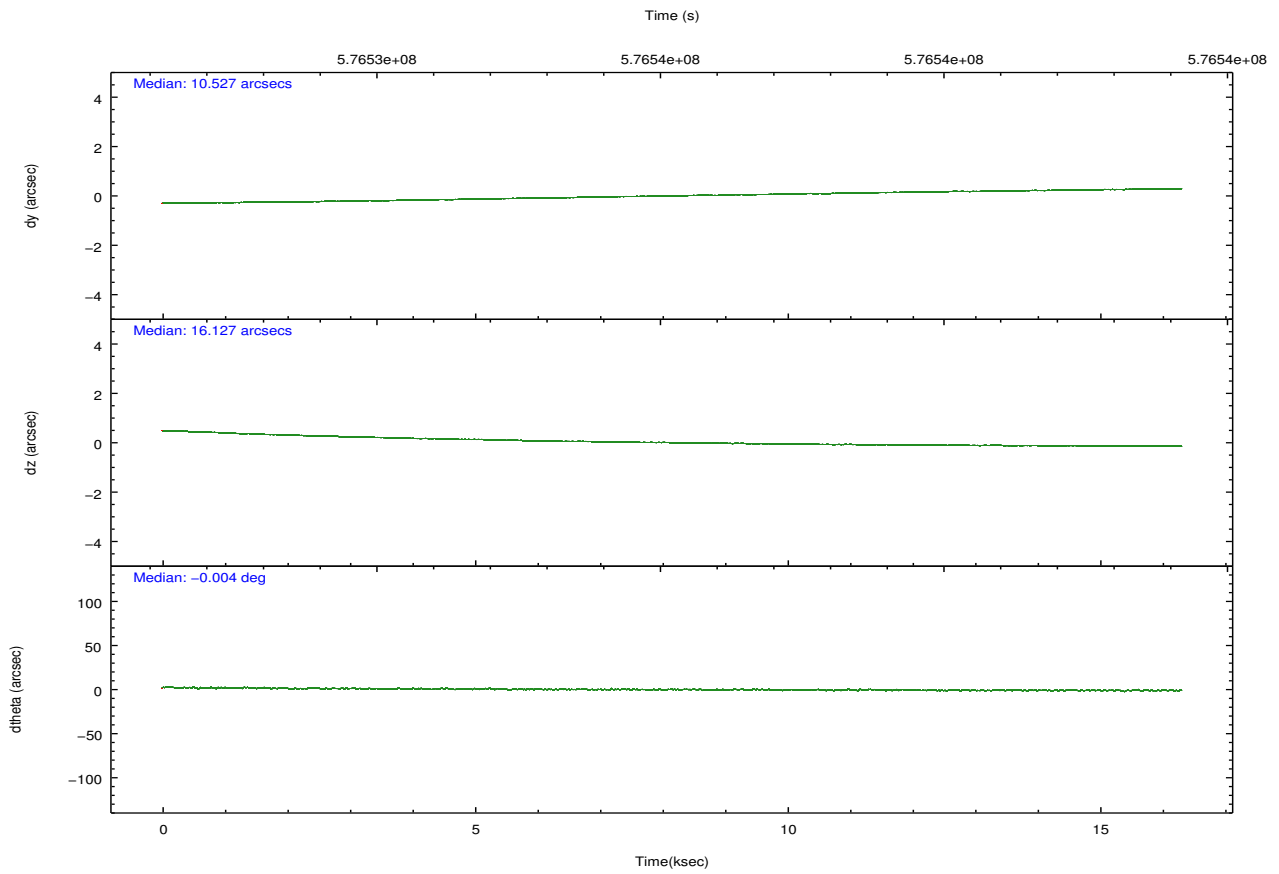
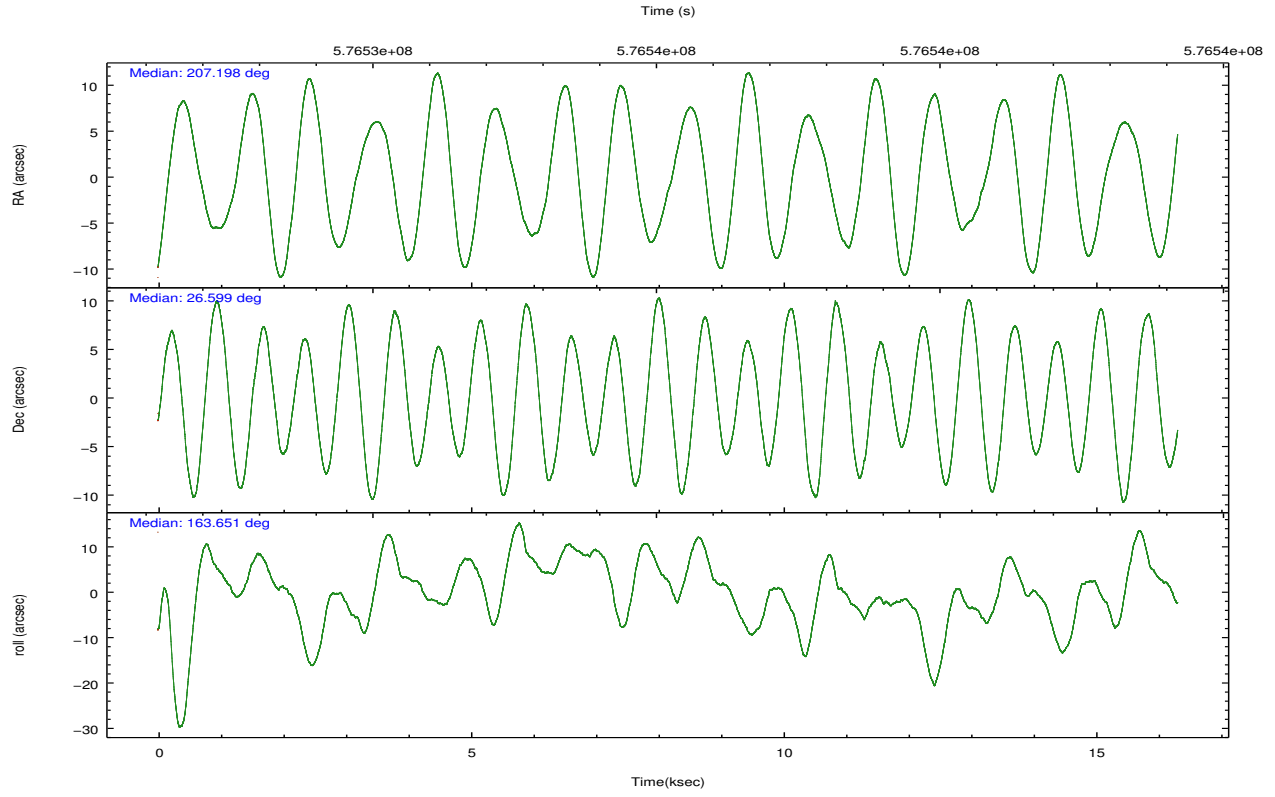
	ccd 0	ccd 1	ccd 2	ccd 3	ccd 6
grade 0 events	7865	18324	14445	60982	3619
	8%	17%	12%	36%	3%
grade 1 events	77	108	118	348	46
	0%	0%	0%	0%	0%
grade 2 events	3184	4407	3789	9127	2540
	3%	4%	3%	5%	2%
grade 3 events	1243	1531	1386	3287	1021
	1%	1%	1%	1%	1%
grade 4 events	1210	1540	1420	3195	1048
	1%	1%	1%	1%	1%
grade 5 events	4055	4226	3836	5044	4420
	4%	3%	3%	3%	4%
grade 6 events	2409	2962	2335	3984	2605
	2%	2%	2%	2%	2%
grade 7 events	72143	73282	86980	81991	83140
	78%	68%	76%	48%	84%

2.2 Compared Parameters

Parameter	Planned	Actual	Parameter	Planned	Actual
Instrument	ACIS	ACIS	Obspar format version number	7	7
Detector	ACIS-01236	ACIS-01236	Obspar file type	PREDICTED	ACTUAL
Grating	NONE	NONE	Obspar update status	NONE	UPDATED
Data mode	VFAINT	VFAINT	Number of optional ACIS chips dropped	0	0
Observation mode	POINTING	POINTING	On-chip summing requested	N	N
[deg] Pointing RA	207.228035	207.1980421794743	Subarray requested	NONE	NONE
[deg] Pointing Dec	26.605615	26.59899547100385	Alternating exposures requested	N	N
[deg] Pointing Roll	163.431131	163.6532526169038	[s] Primary exposure time	0.000000	3.1
[s] Window start time (MET)	575856068.184000	575856068.184000			
[s] Window stop time (MET)	578361668.184000	578361668.184000			
[mm] SIM focus pos	-0.782348	-0.7809083437167272			
[mm] SIM defocus	0	0.001439871863259334			
[mm] SIM translation stage pos	-230.252463	-230.248423740357			
[mm] SIM translation stage offset	-3.34	-3.34402926257269			
[s] Observation start time (MET)	576528332.184000	576526828.99872			
Observation start date	2016-04-08T18:44:24	2016-04-08T18:20:28			
[s] Observation end time (MET)	576543332.184000	576543466.2871701			
Observation end date	2016-04-08T22:54:24	2016-04-08T22:57:46			
Read mode	TIMED	TIMED			

2.3 Aspect





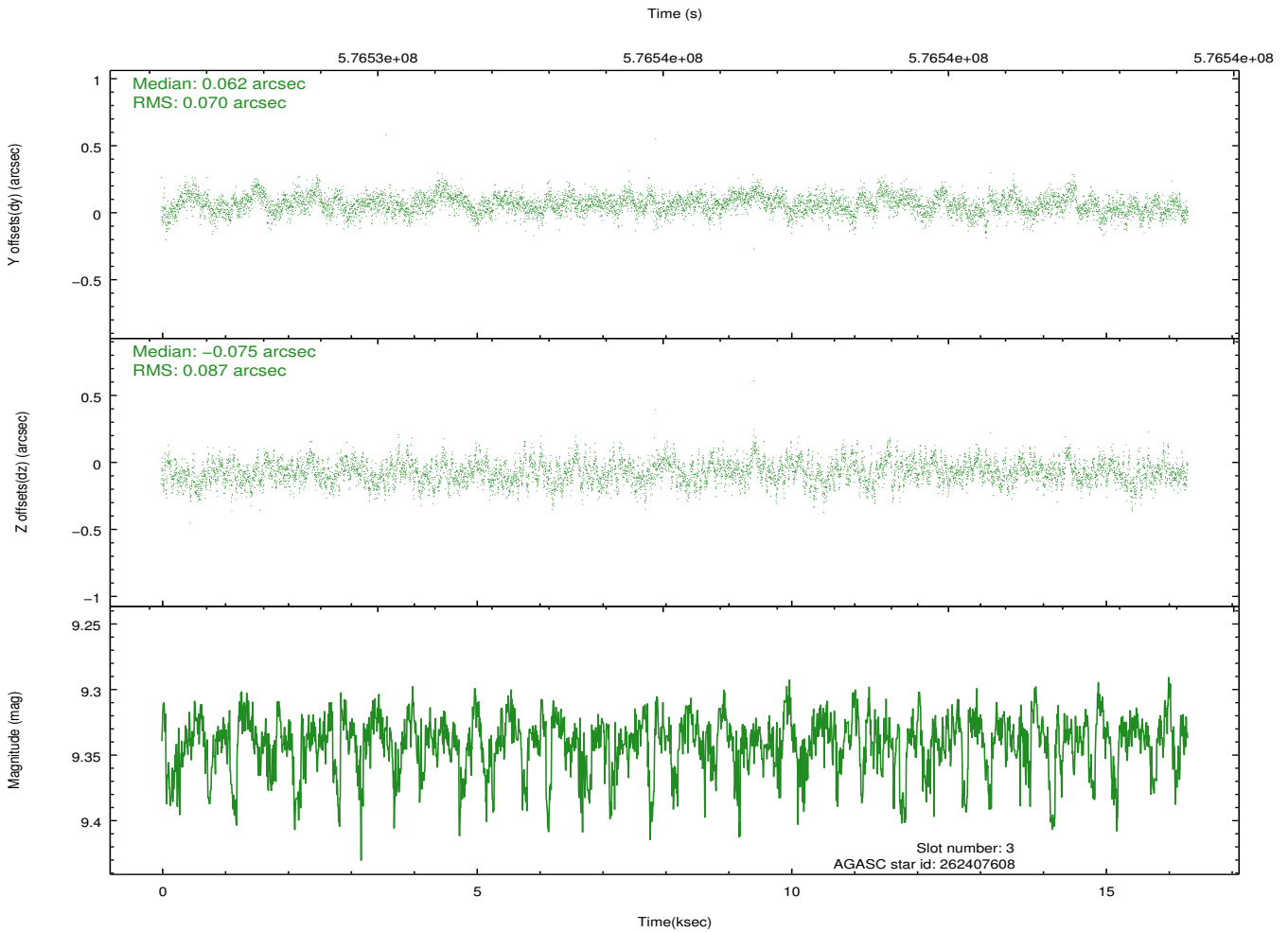
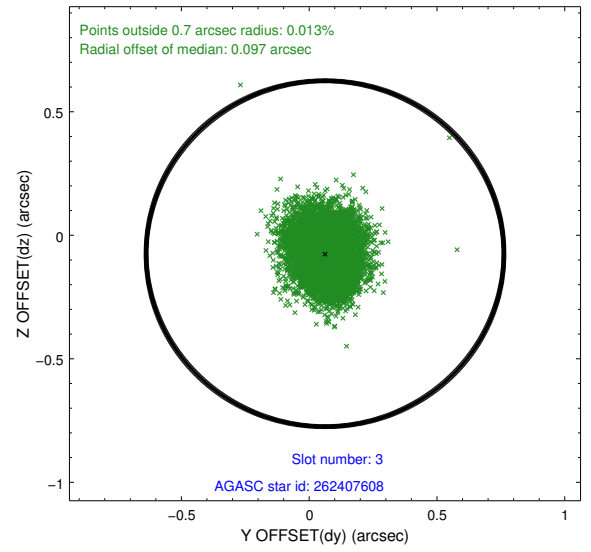
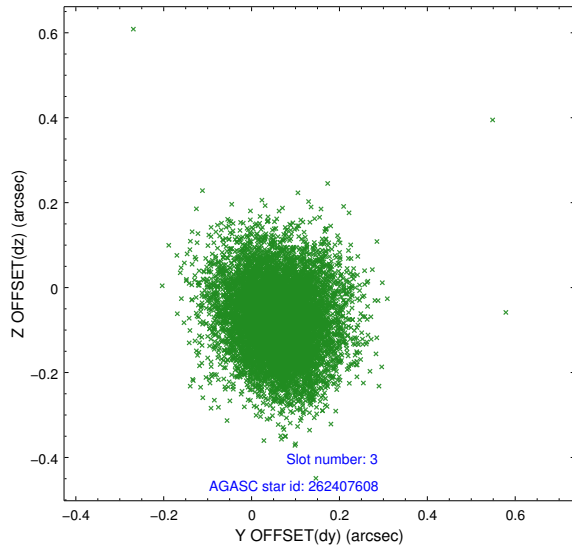
Slot Statistics

slot	status	used	id	mag	n_pts	med_dy	med_dz	dr1	dr2	ra	dec	mean_y	mean_z
0	FID		ACIS-I-1	7.25	3978	0.109	-0.106	0.008	0.018	0.000000	0.000000	929.13	-908.49
1	FID		ACIS-I-5	7.25	3979	-0.331	0.066	0.007	0.012	0.000000	0.000000	-1819.33	988.93
2	FID		ACIS-I-6	7.26	3978	0.130	0.111	0.008	0.014	0.000000	0.000000	394.33	1633.86
3	GUIDE	used	262407608	9.34	7946	0.062	-0.075	0.118	0.194	207.378401	26.435507	-639.08	448.51
4	GUIDE	used	262407760	9.83	7791	-0.078	-0.080	0.181	0.287	206.566773	26.577263	2013.76	700.01
5	GUIDE	used	262408096	9.30	7952	-0.060	-0.156	0.174	0.276	207.011678	26.515421	576.63	509.41
6	GUIDE	used	262408512	7.99	7955	0.152	0.192	0.091	0.147	207.800210	27.128796	-1218.30	-2331.69
7	GUIDE	used	262408936	9.67	7943	-0.084	0.124	0.182	0.295	207.154731	26.726554	349.79	-350.07

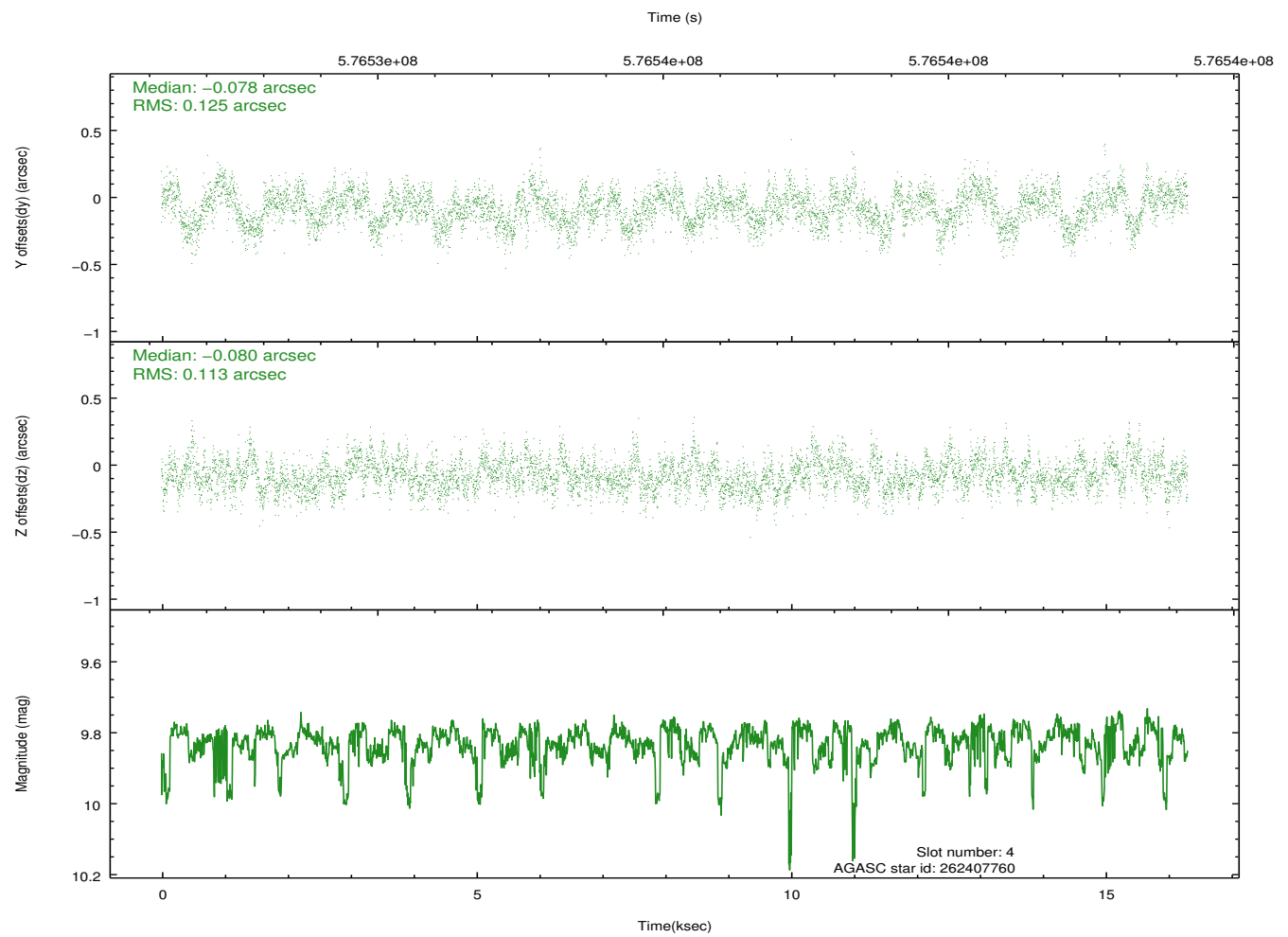
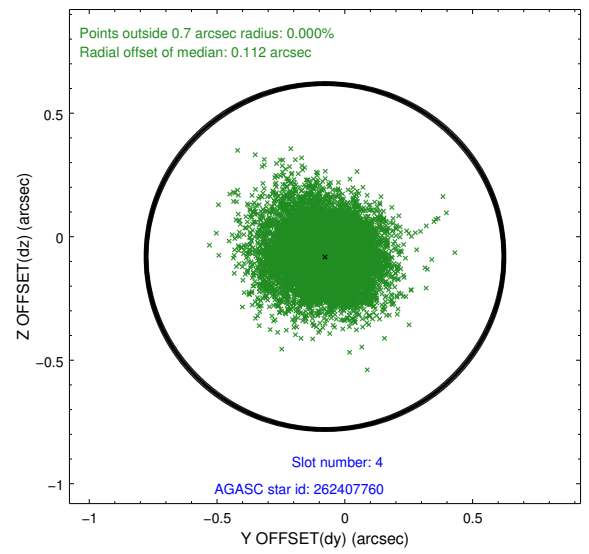
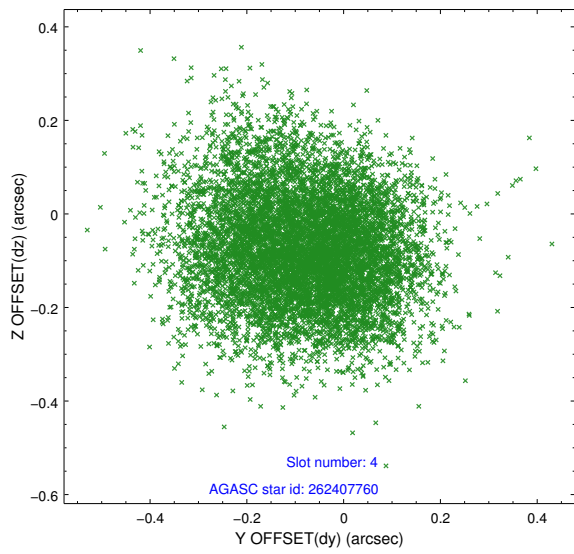
∞

2.4 Star Slots

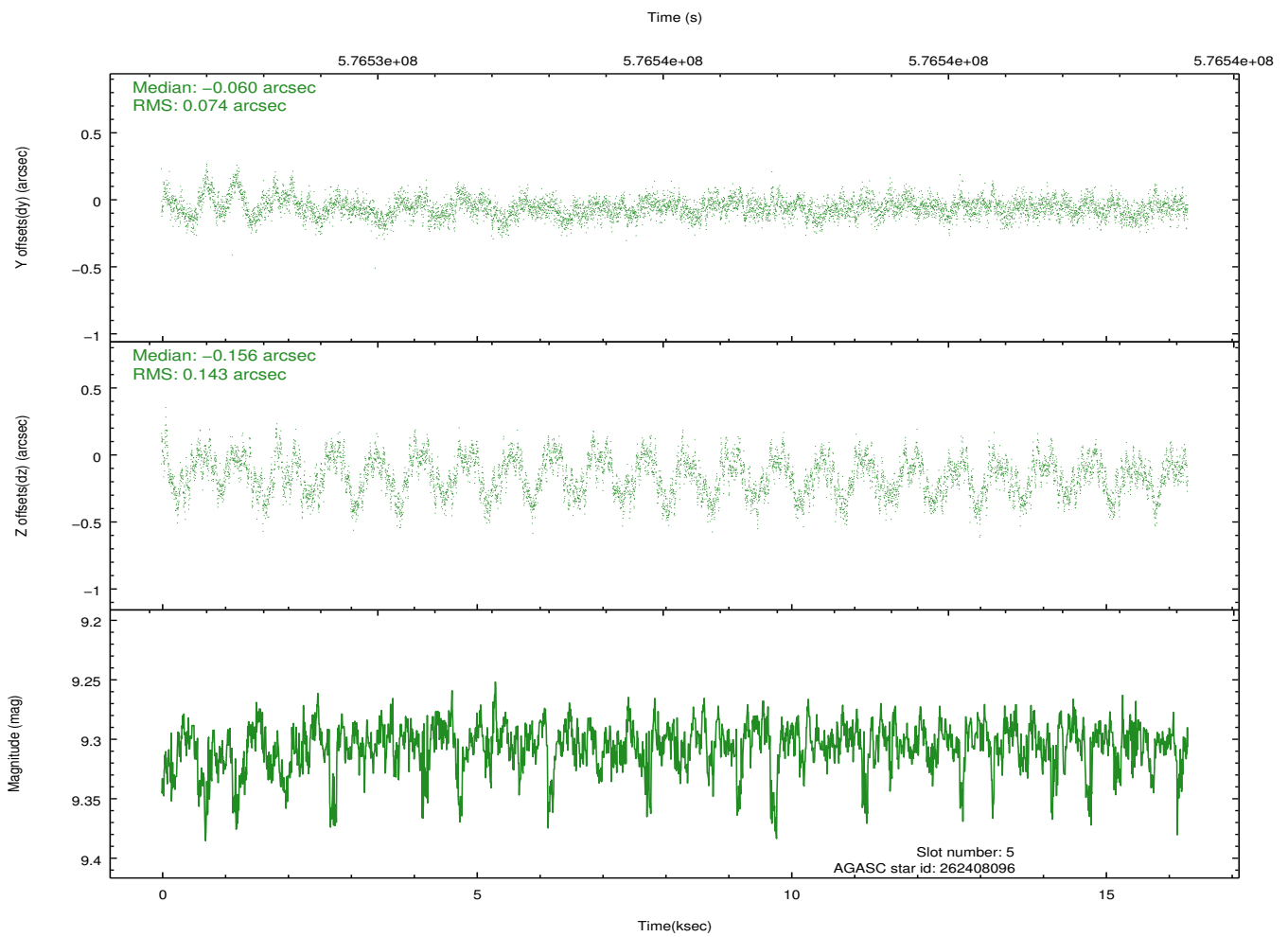
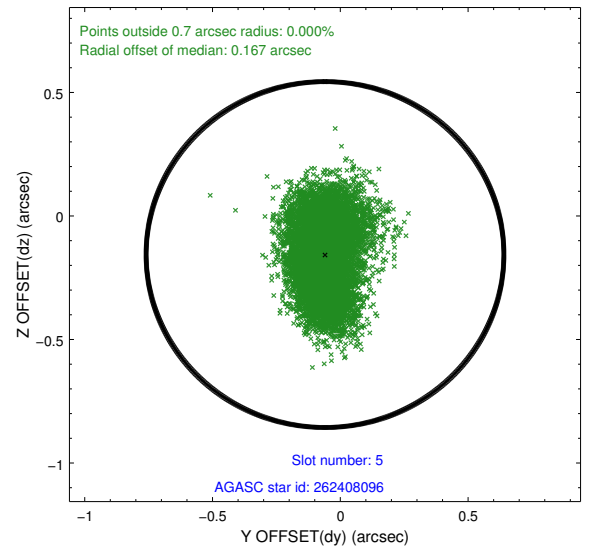
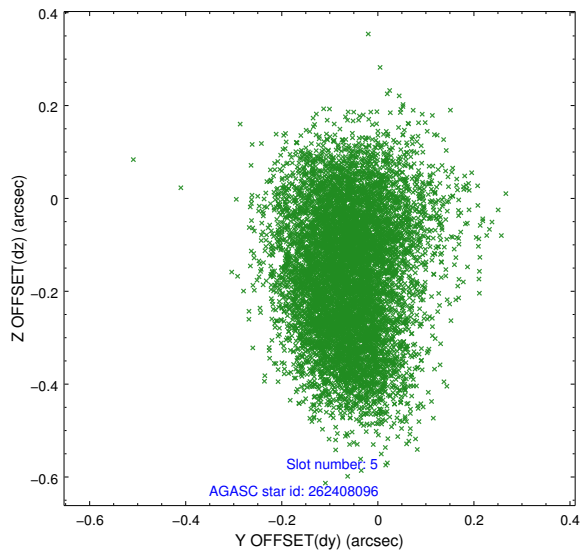
2.4.1 Slot 3



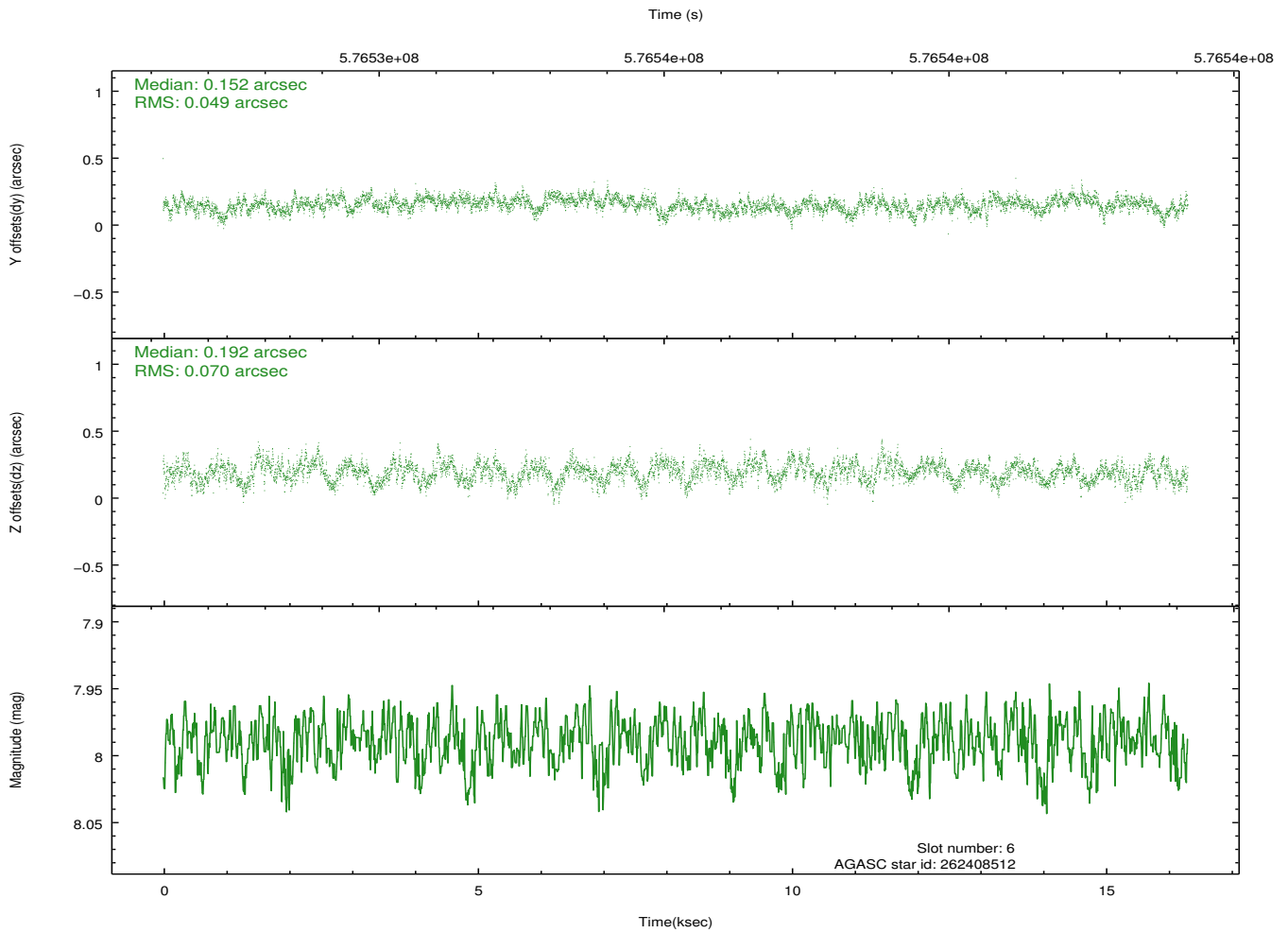
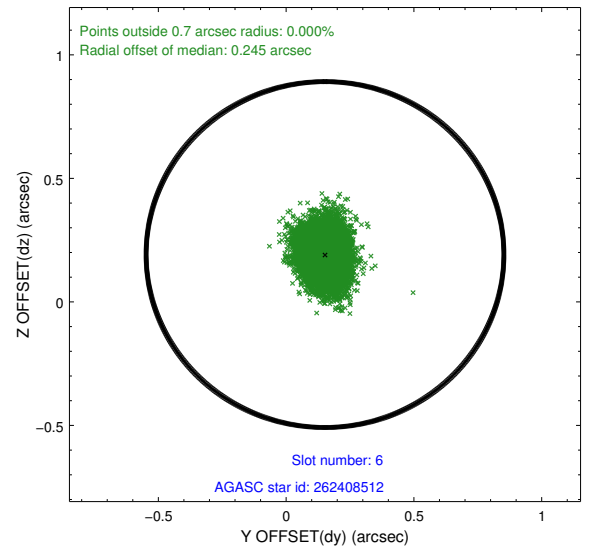
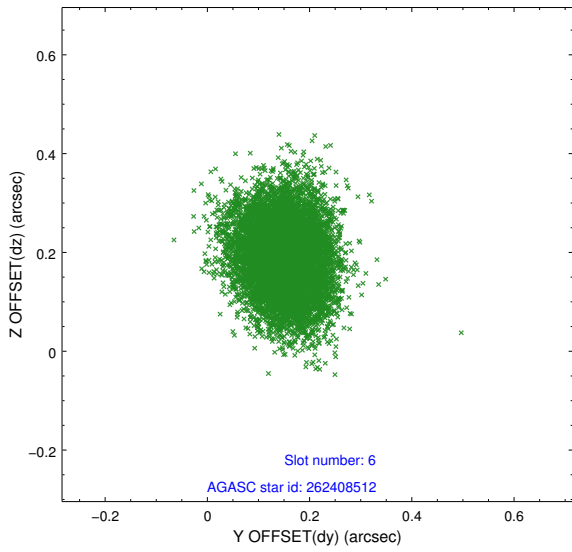
2.4.2 Slot 4



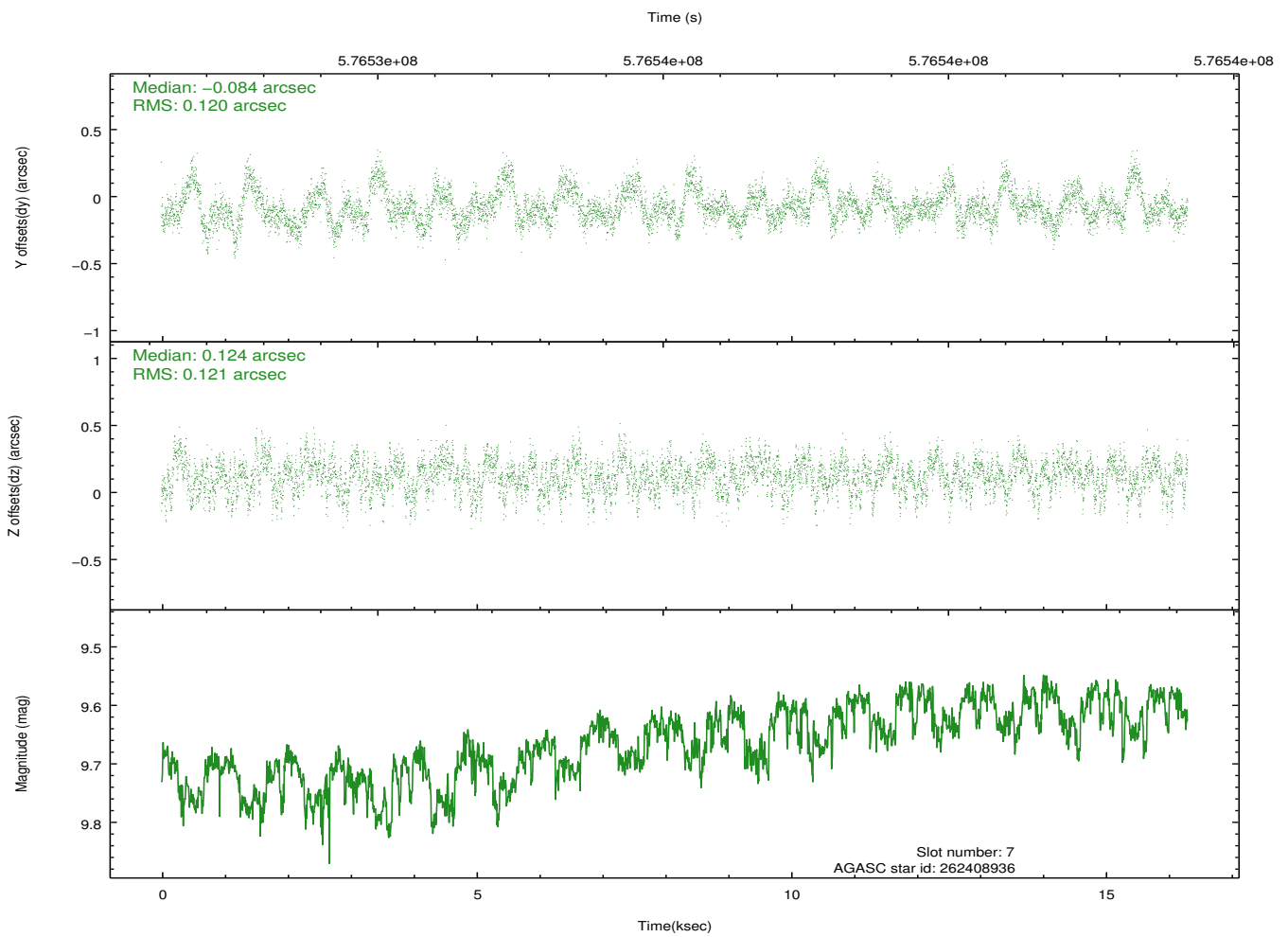
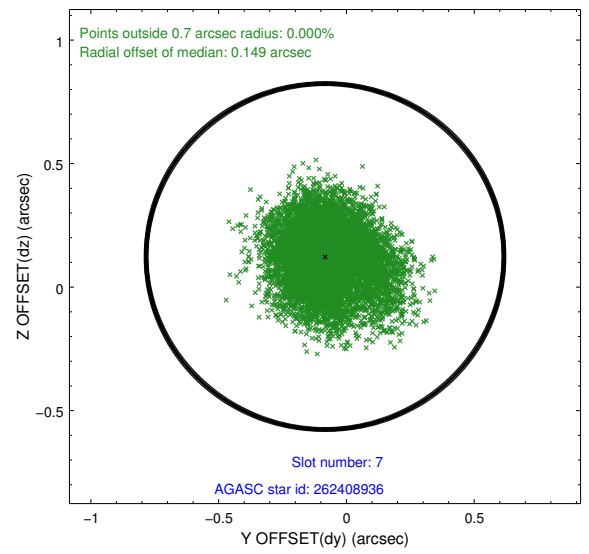
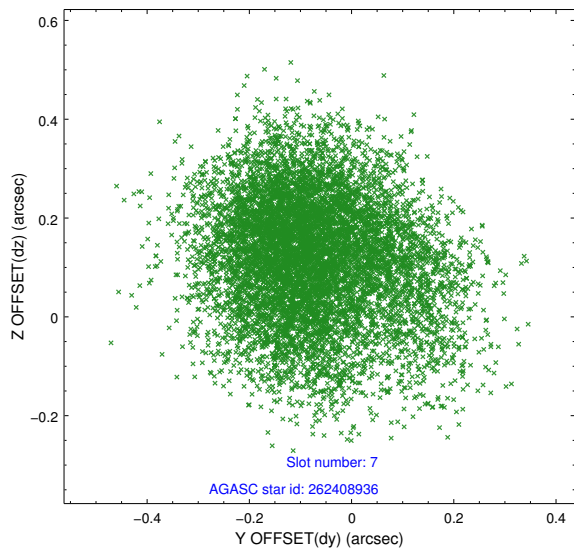
2.4.3 Slot 5



2.4.4 Slot 6

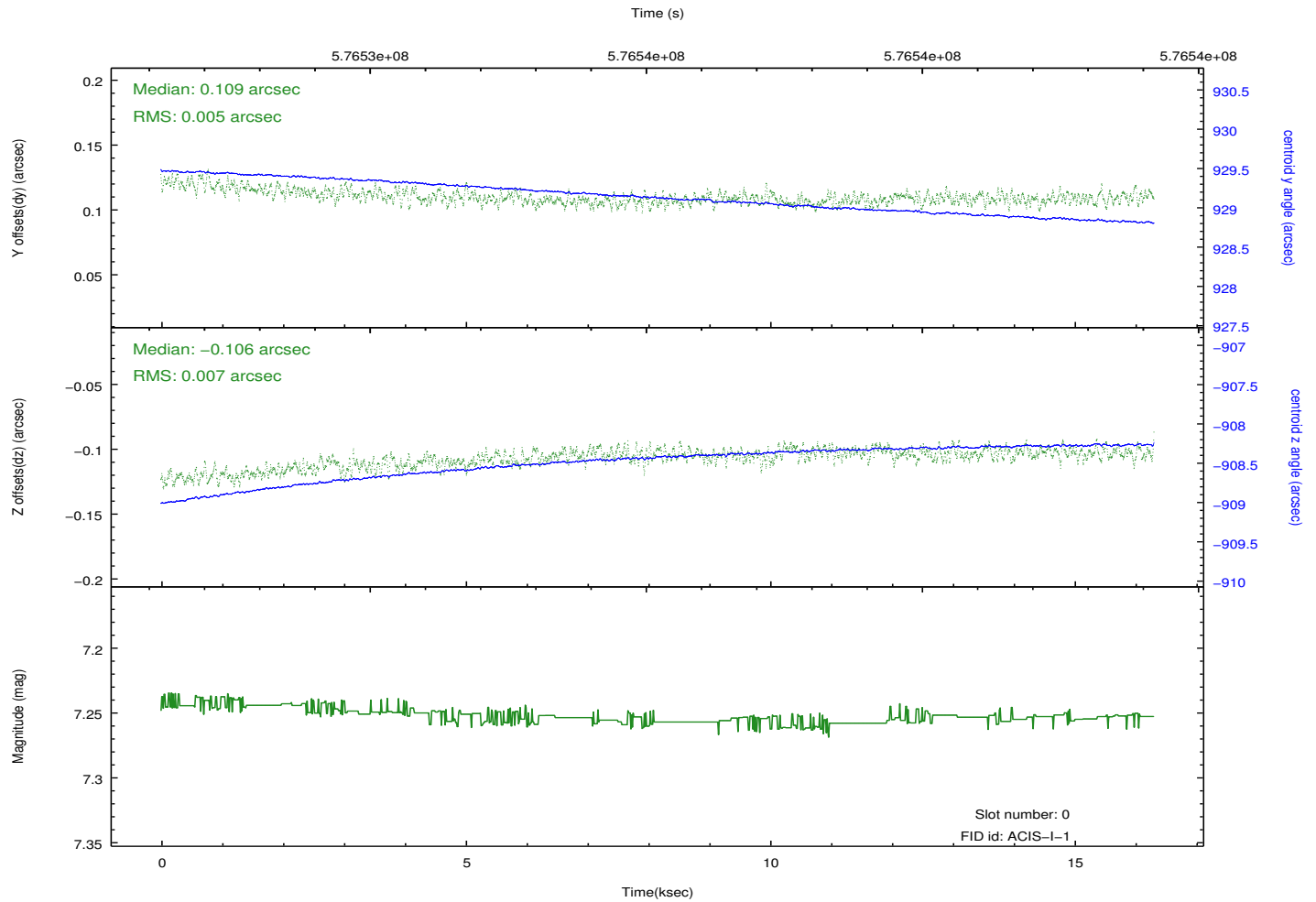
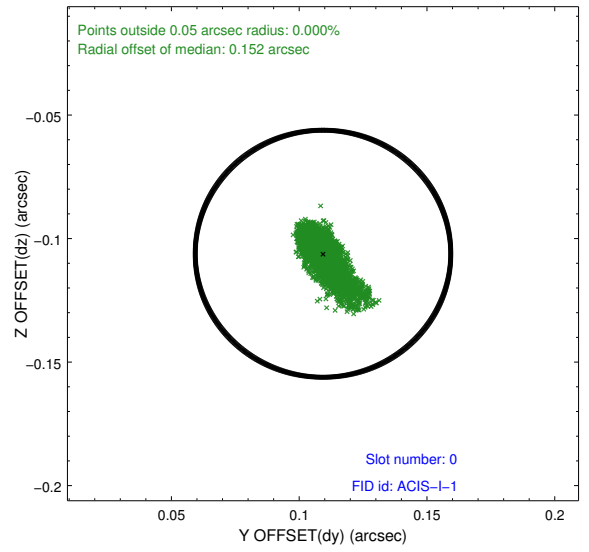
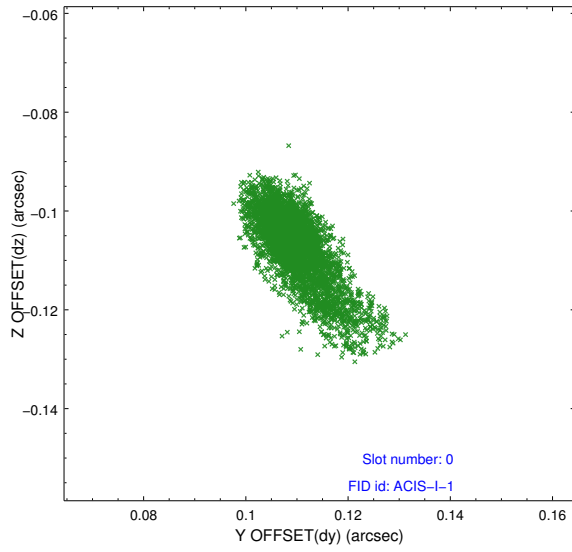


2.4.5 Slot 7

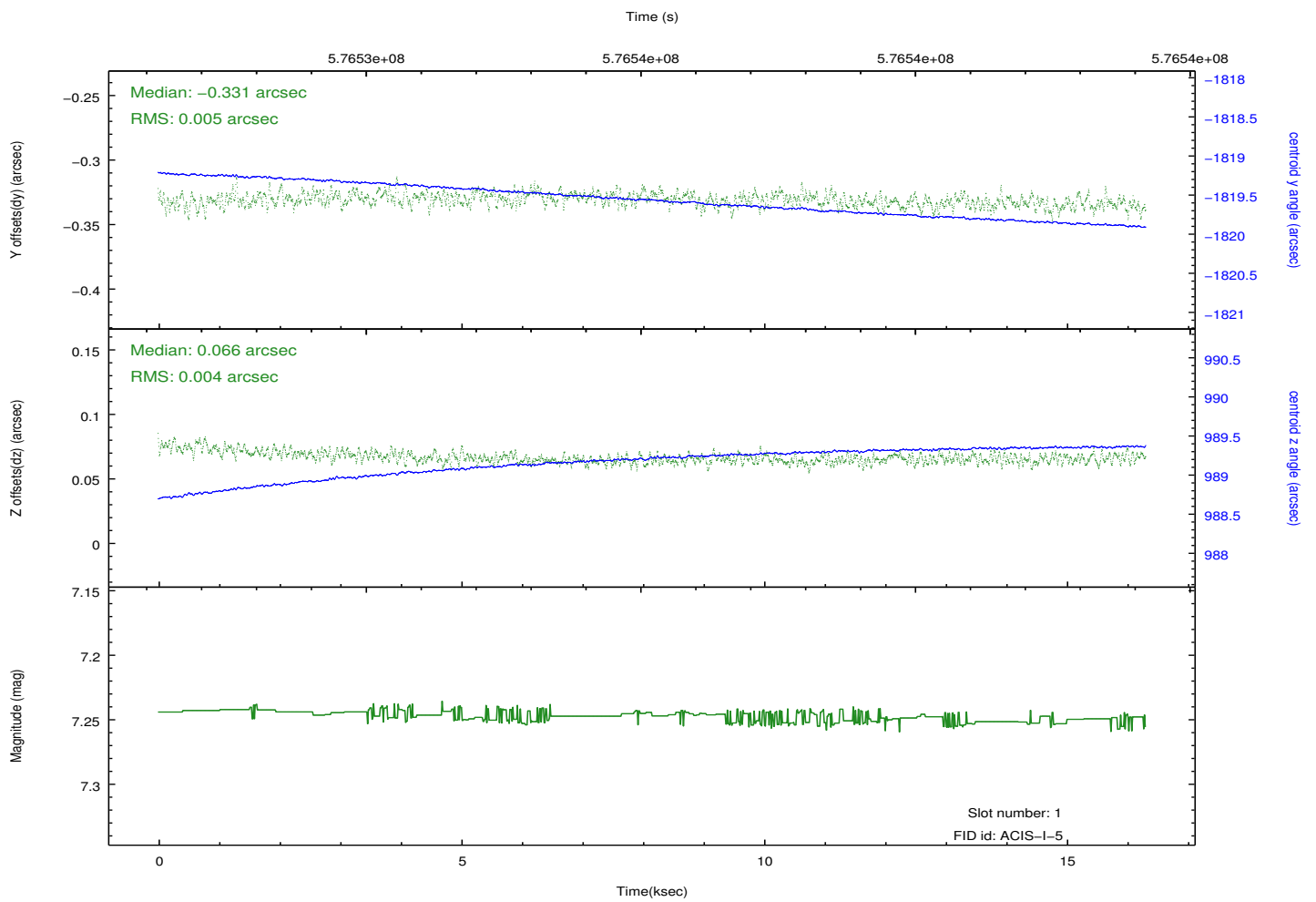
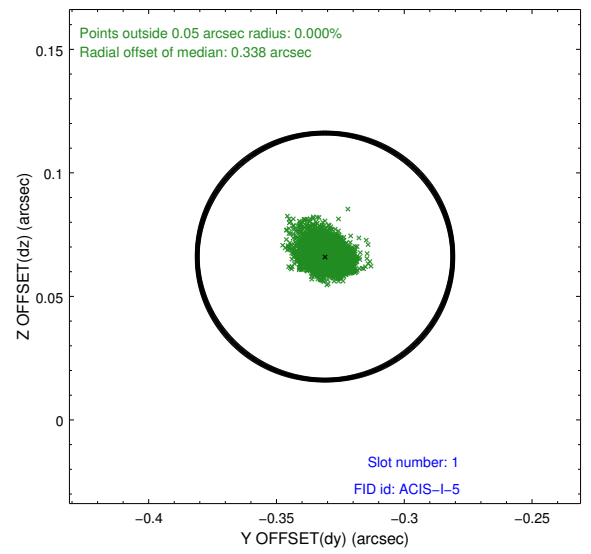
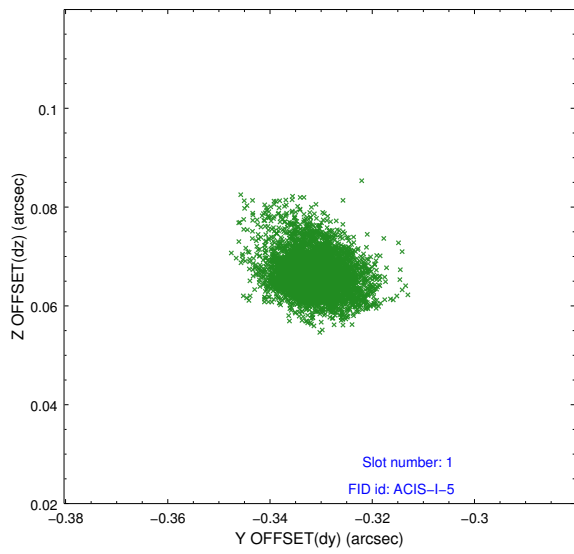


2.5 FID Slots

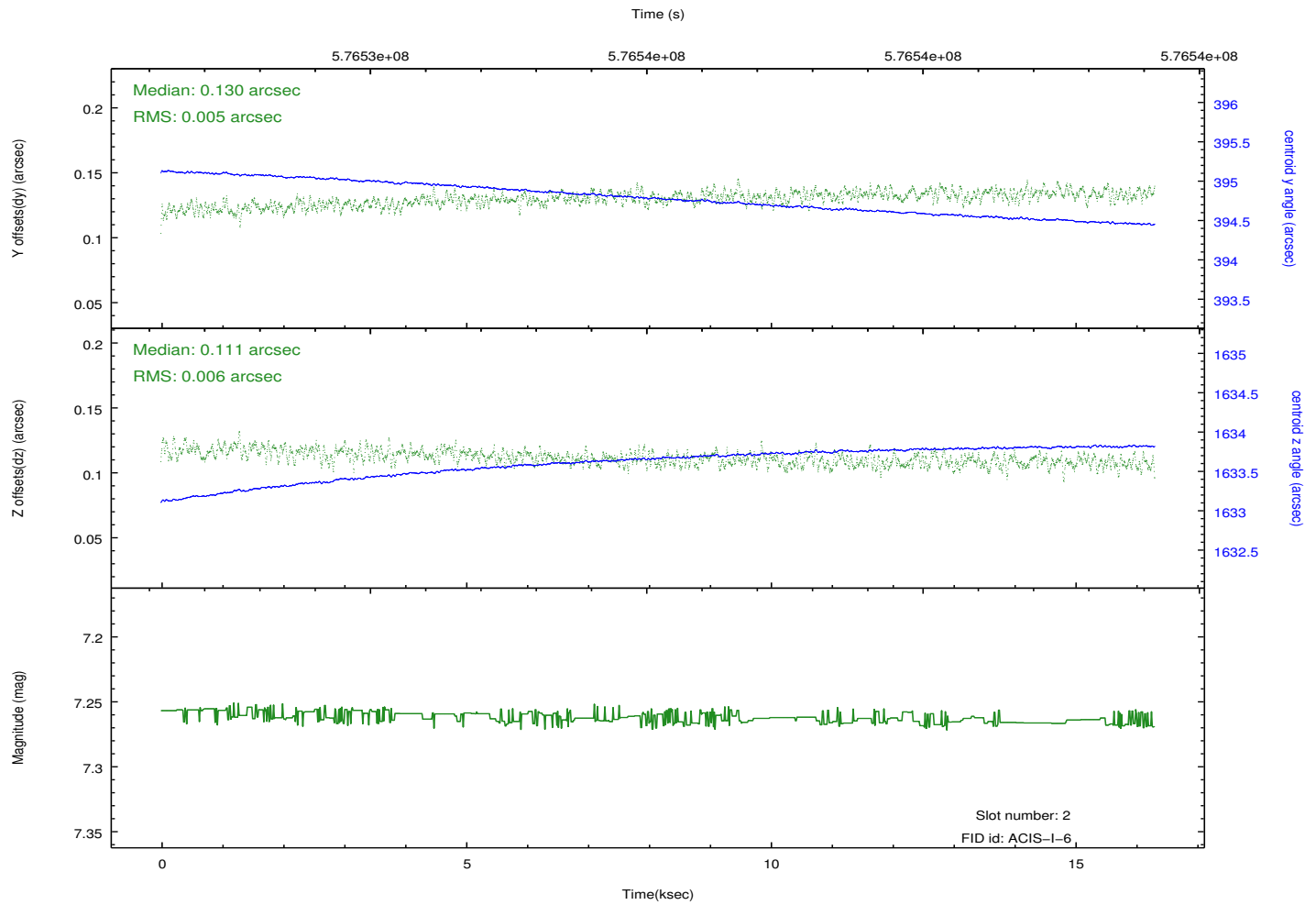
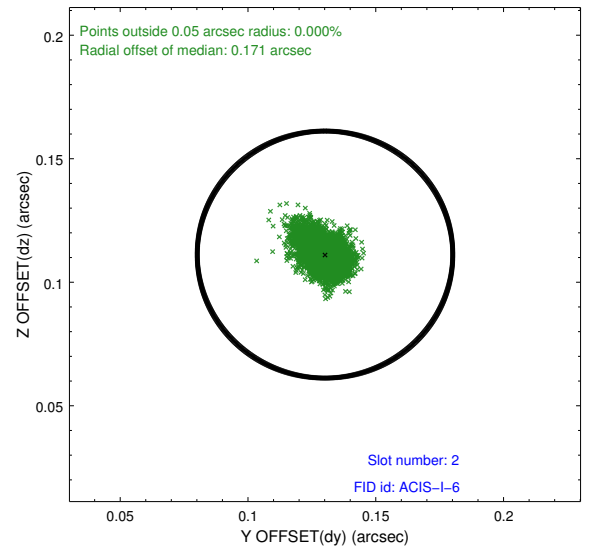
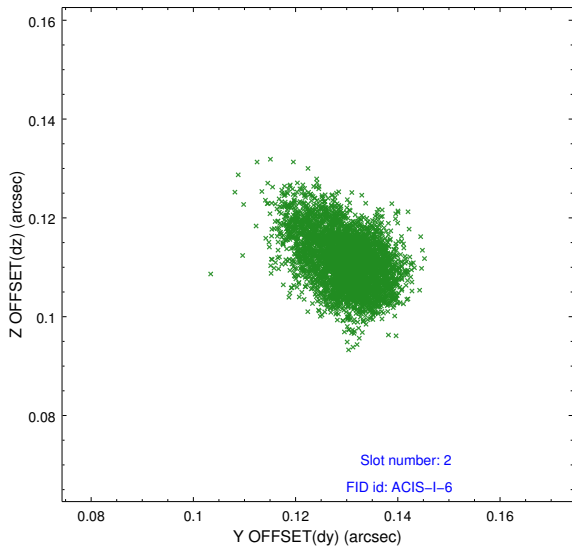
2.5.1 Slot 0



2.5.2 Slot 1



2.5.3 Slot 2



A Summary

A.1 Status

V&V Scientist	Beth Sundheim
V&V Date (YYYY-MM-DD)	2016.04.10
V&V Edition	1
V&V Disposition and Status	OK
V&V Charge Time	15.053600115895

A.2 Comments

Window preference met.