

V&V Reference Report

L2 ASCDS Version : 7.6.10

Observation 1857 - L2 Version 001
Chandra X-Ray Center

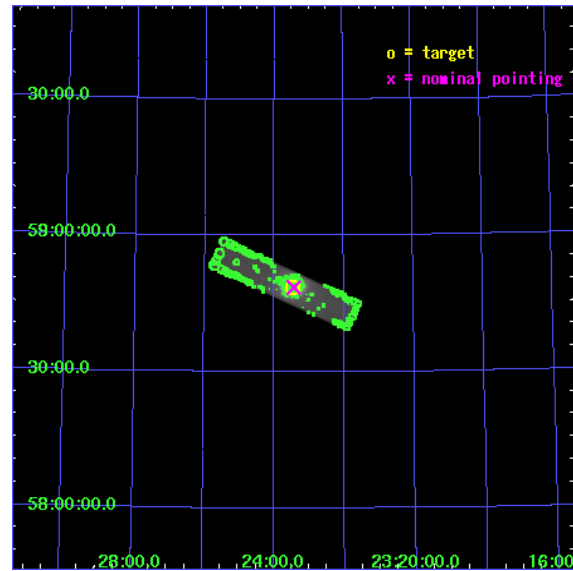
L2 Processing Date : Jun 9 2007

Contents

1	Front	2
2	OBI	3
2.1	OBI	3
2.1.1	Images	3
2.1.2	Parameters	4
2.1.3	Events	4
2.2	Compared Parameters	5
2.3	Aspect	6
2.4	Star Slots	9
2.4.1	Slot 3	9
2.4.2	Slot 4	10
2.4.3	Slot 5	11
2.4.4	Slot 6	12
2.4.5	Slot 7	13
2.5	FID Slots	14
2.5.1	Slot 0	14
2.5.2	Slot 1	15
2.5.3	Slot 2	16
3	Point Sources	17
A	Summary	18
A.1	Status	18
A.2	Comments	18

1 Front

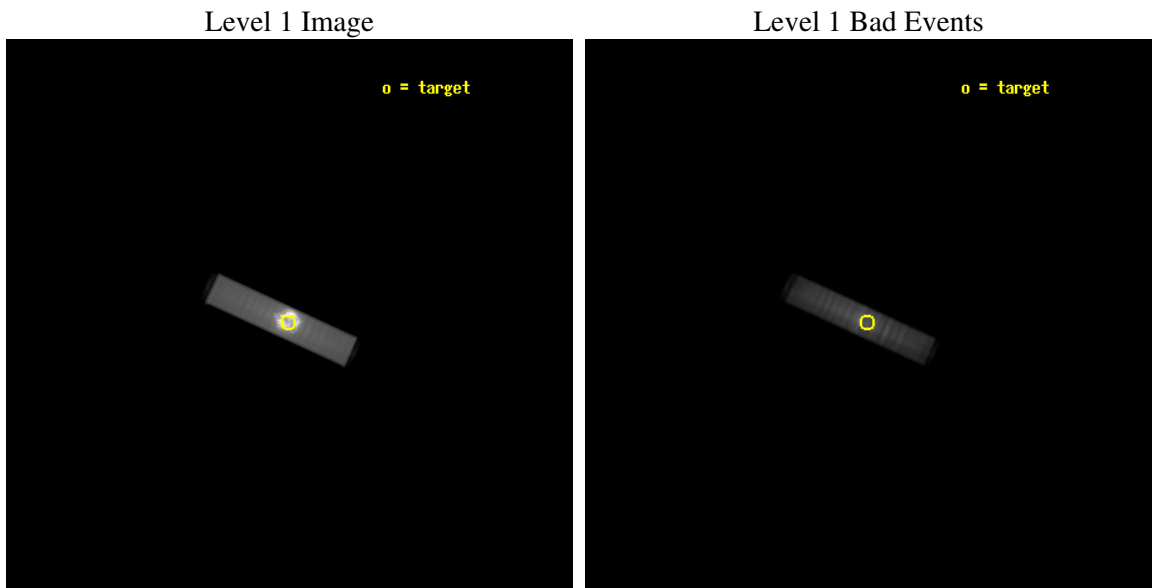
seq_num	500124
obs_id	1857
title	SEARCH FOR PULSARS
observer	Dr. Stephen Murray
object	CAS A
ra_targ	350.866058
dec_targ	58.811694
ra_nom	350.85727955741
dec_nom	58.809875782689
roll_nom	204.44426239604
revision	4
ontime	48901.98309505
livetime	48440.464800181
l2events	5346122



2 OBI

2.1 OBI

2.1.1 Images



2.1.2 Parameters

obi_num	0
ascdsver	7.6.10
caldbver	3.4.0
date	2007-06-09T18:50:02
revision	4

sched_exp_time	48930.000000
ontime	48901.983096048
l1events	6233421

2.1.3 Events

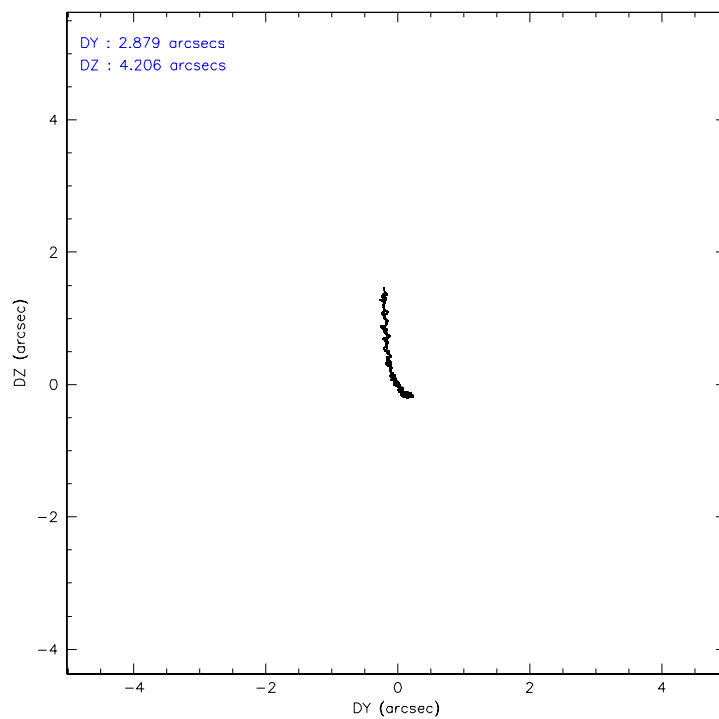
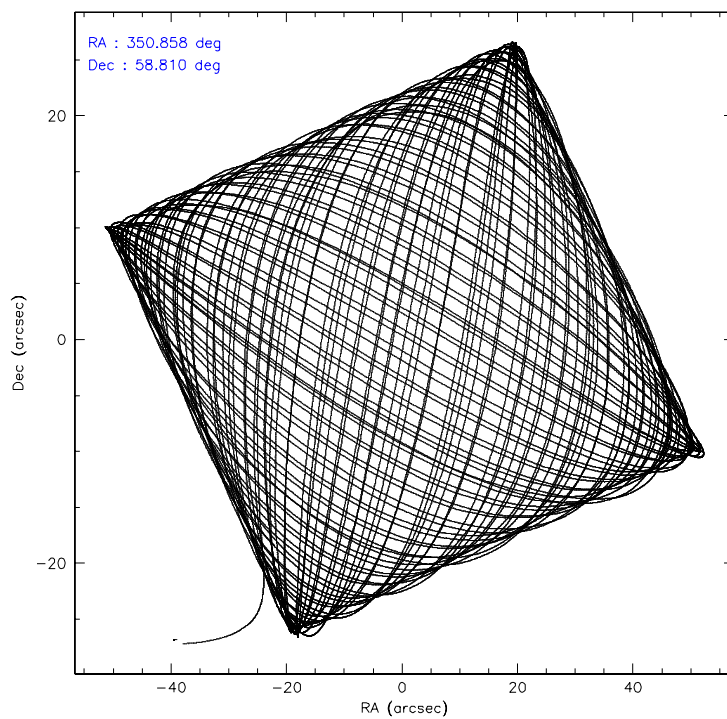
Level 1 Events

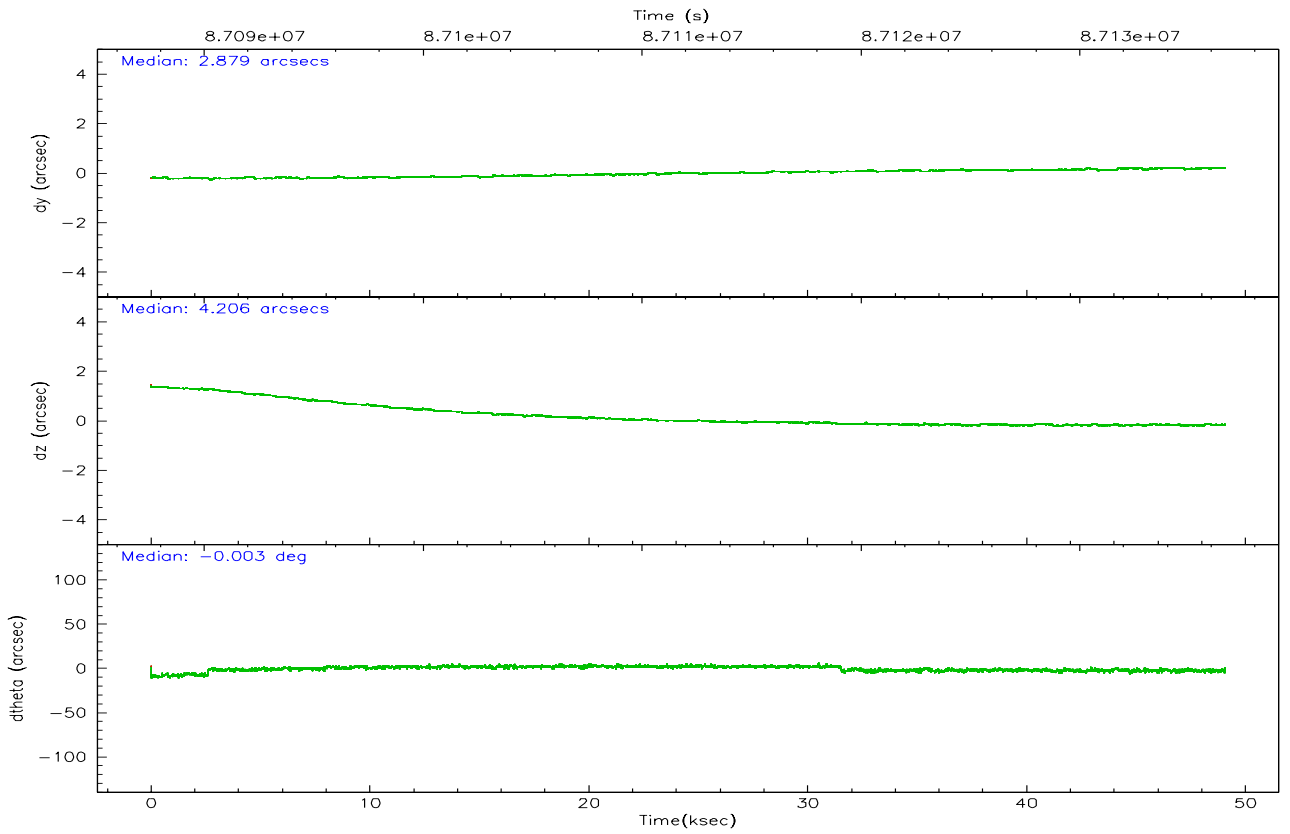
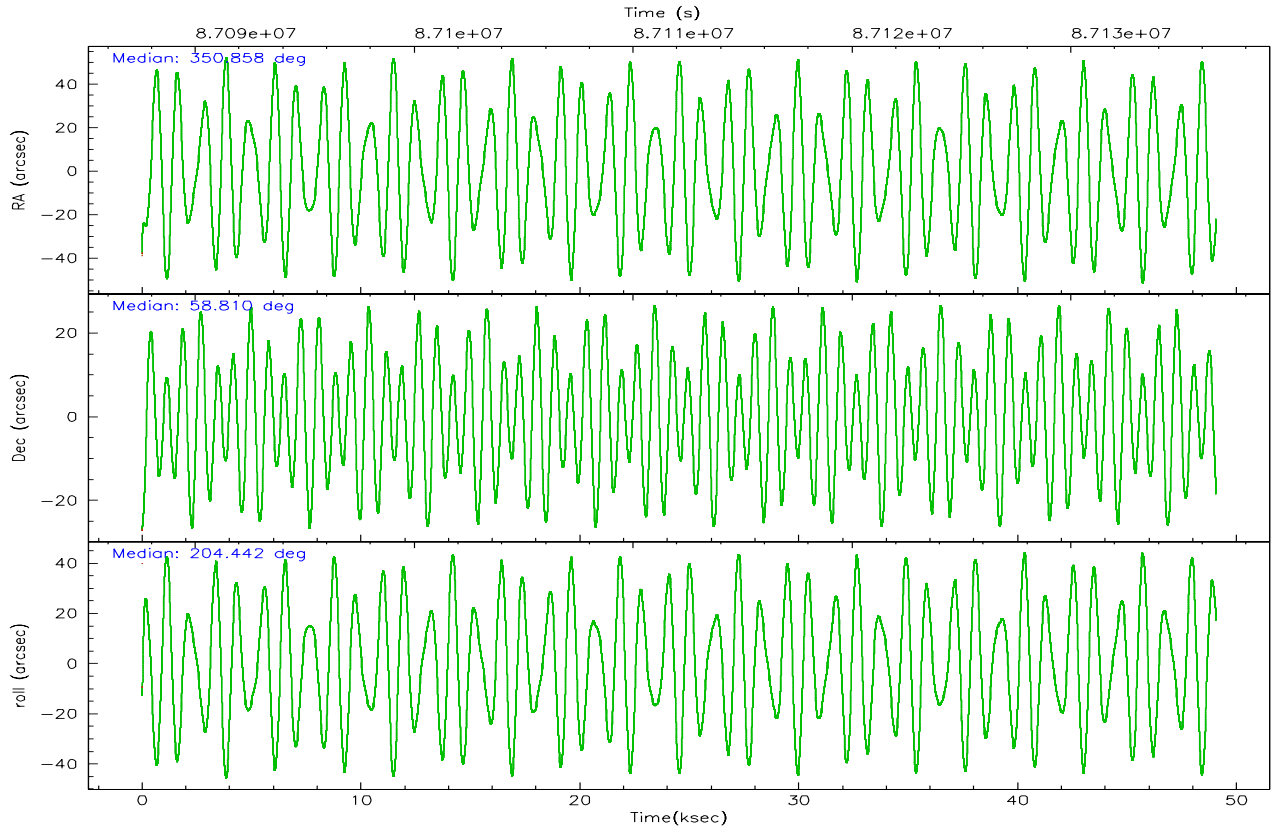
	segment 1	segment 2	segment 3
level 1 events	2919	6230497	5
rejected events	2734	772666	5
rejected %	93%	12%	100%

2.2 Compared Parameters

Parameter	Planned	Actual	Parameter	Planned	Actual
Instrument	HRC	HRC	Obspar format version number	6	6
Detector	HRC-S	HRC-S	Obspar file type	PREDICTED	ACTUAL
Grating	NONE	NONE	Obspar update status	NONE	UPDATED
Data mode	OBSERVING	OBSERVING			
Observation mode	POINTING	POINTING			
Pointing RA	350.887605	350.857279557415			
Pointing Dec	58.833952	58.80987578268881			
Pointing Roll	204.350989	204.4442623960432			
SIM focus pos (mm)	-1.429586	-1.428180813131781			
SIM defocus (mm)	0.1037507710433287	0.1051558262725154			
SIM translation stage pos (mm)	250.455976	250.466033080201			
SIM translation stage offset (mm)	0	-0.01005468664627074			
Observation start time	87087709.184000	87086632.11194099			
Observation start date	2000-10-04T23:00:45	2000-10-04T22:43:52			
Observation end time	87136639.184000	87137247.126352			
Observation end date	2000-10-05T12:36:15	2000-10-05T12:47:27			

2.3 Aspect



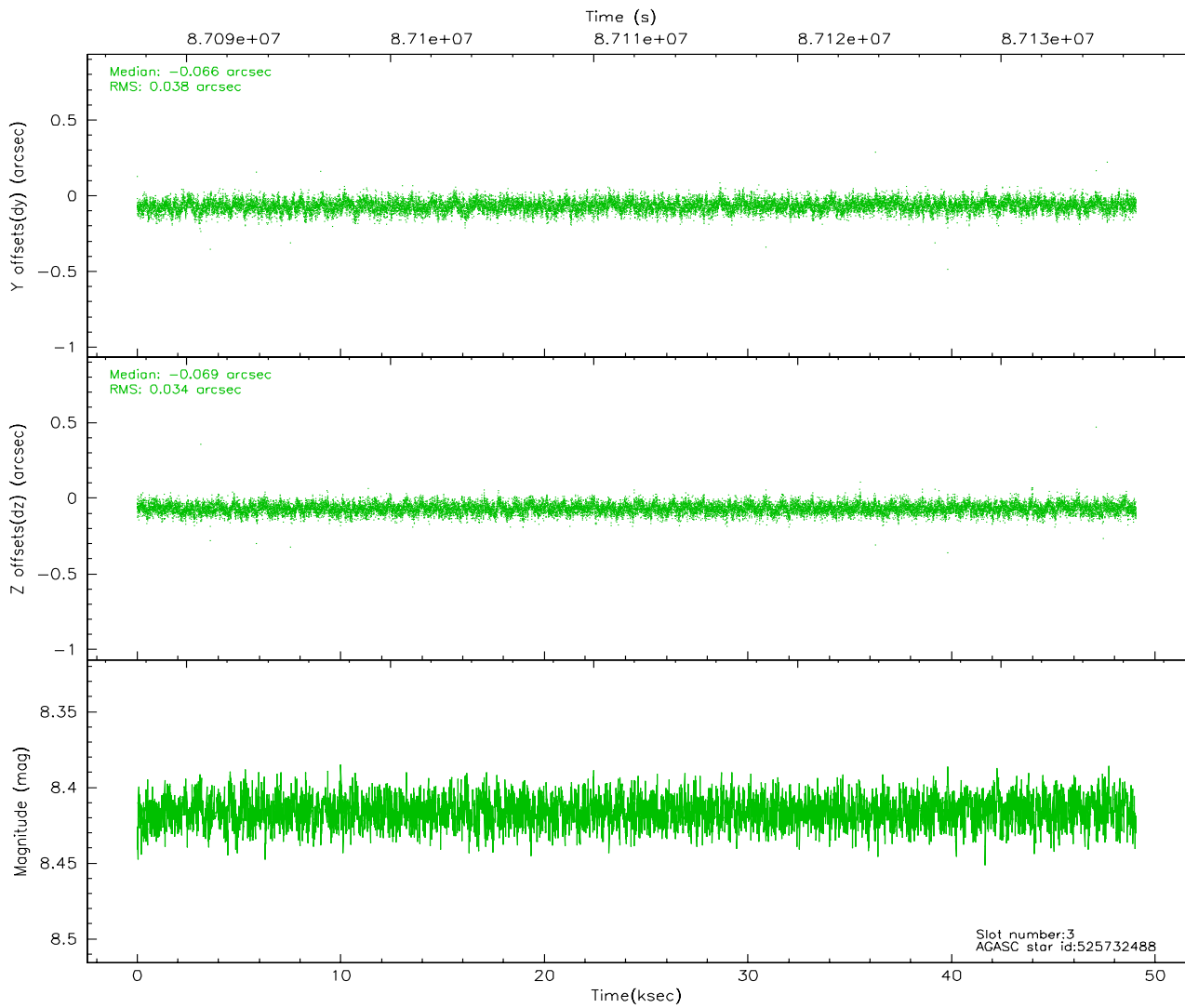
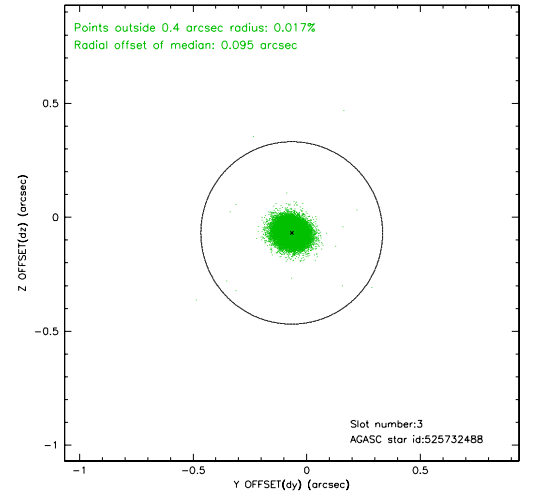
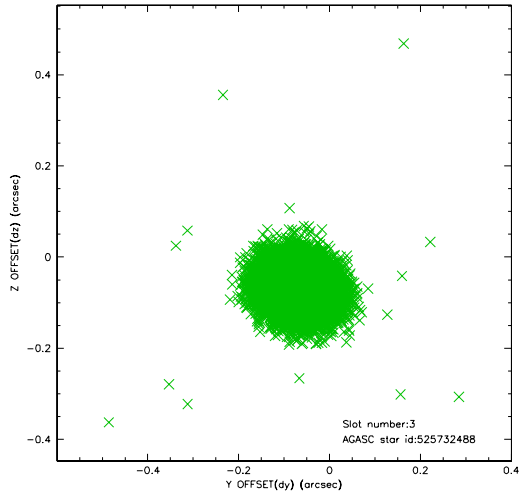


Slot Statistics

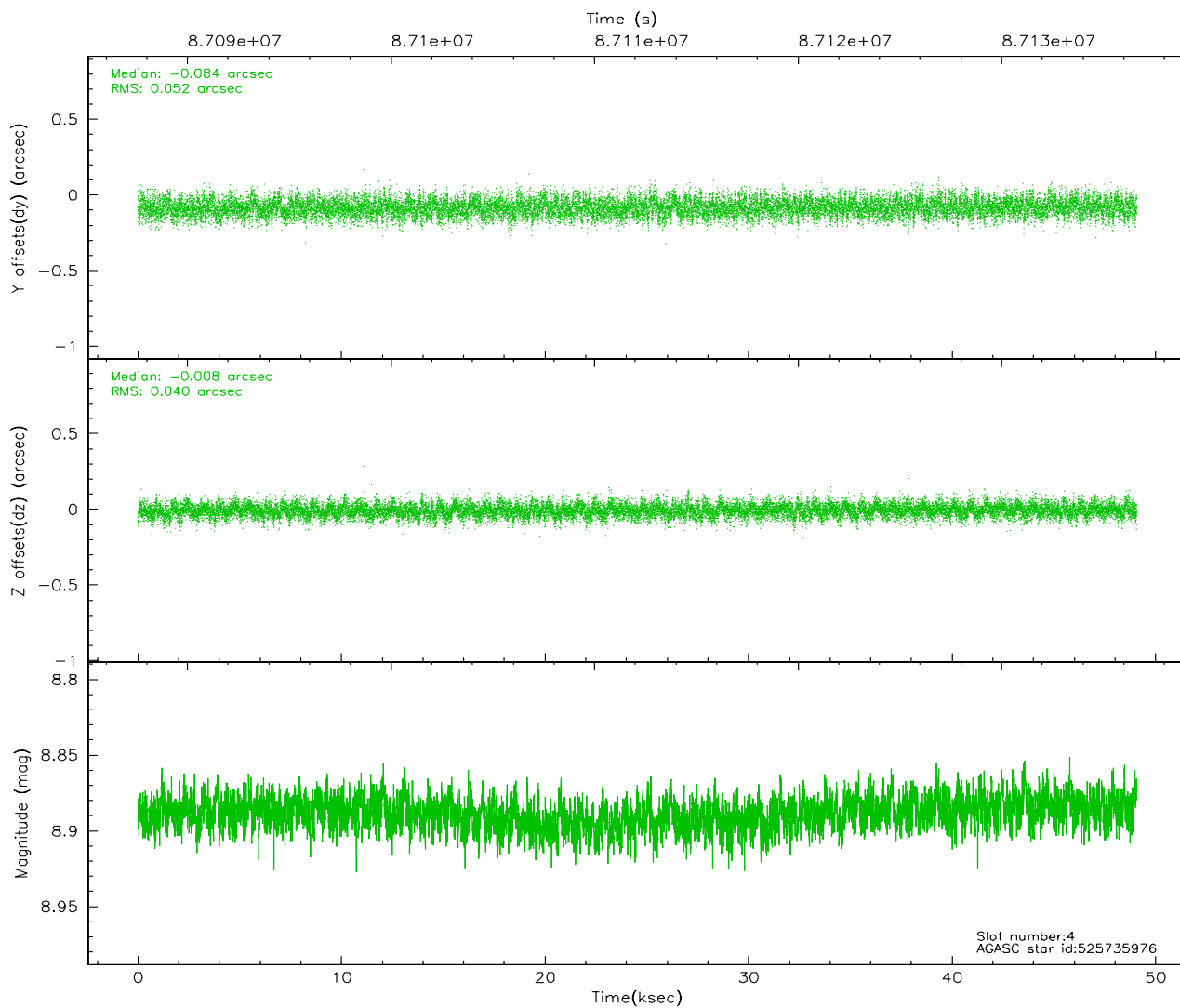
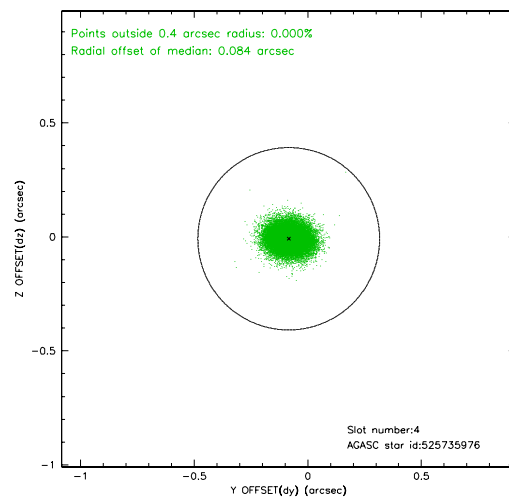
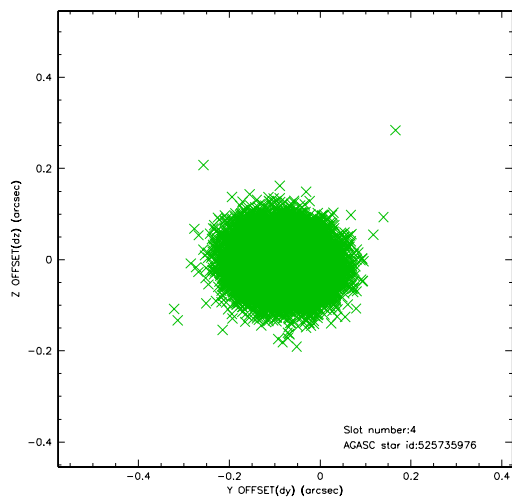
slot	status	id	mag	n_pts	med_dy	med_dz	dr1	dr2	ra	dec	mean_y	mean_z
0	FID	HRC-S-1	7.00	11967	0.131	-0.135	0.016	0.030	0.000000	0.000000	-1156.92	-452.91
1	FID	HRC-S-3	7.02	11967	0.126	-0.061	0.017	0.030	0.000000	0.000000	-1159.74	576.66
2	FID	HRC-S-4	6.97	11968	0.131	-0.101	0.010	0.016	0.000000	0.000000	1241.25	579.26
3	GUIDE	525732488	8.42	23936	-0.066	-0.069	0.053	0.088	350.087090	58.516915	1838.99	411.13
4	GUIDE	525735976	8.89	23928	-0.084	-0.008	0.070	0.114	350.142956	58.277622	2107.76	1236.50
5	GUIDE	525732232	9.12	23924	0.022	0.016	0.074	0.120	351.669550	58.757012	-1218.34	846.81
6	GUIDE	525732528	9.36	23923	0.085	0.033	0.075	0.122	351.607241	59.298932	-1897.03	-986.07
7	GUIDE	525737208	9.37	23929	0.041	0.030	0.087	0.142	351.154109	59.407897	-1296.12	-1681.95

2.4 Star Slots

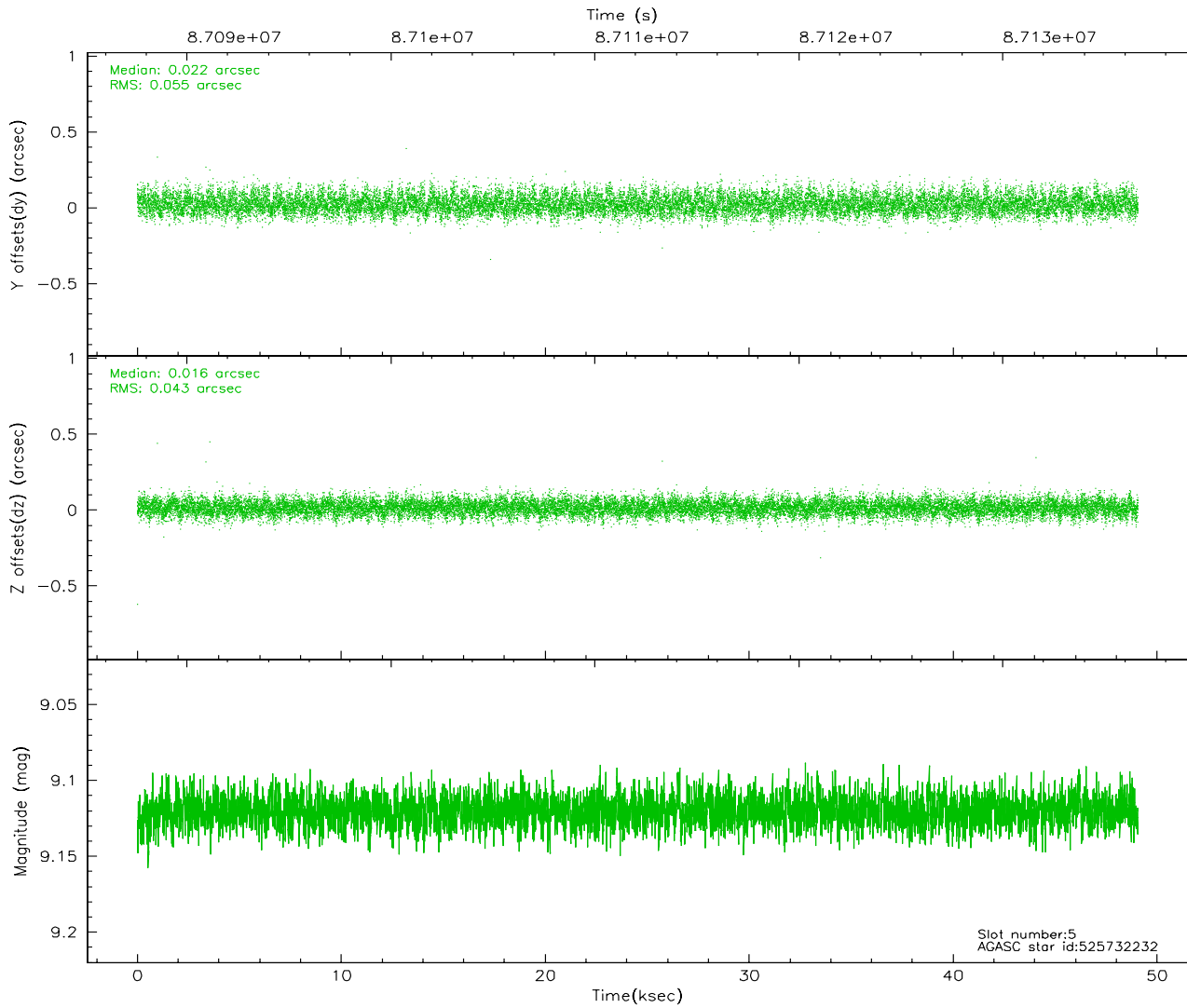
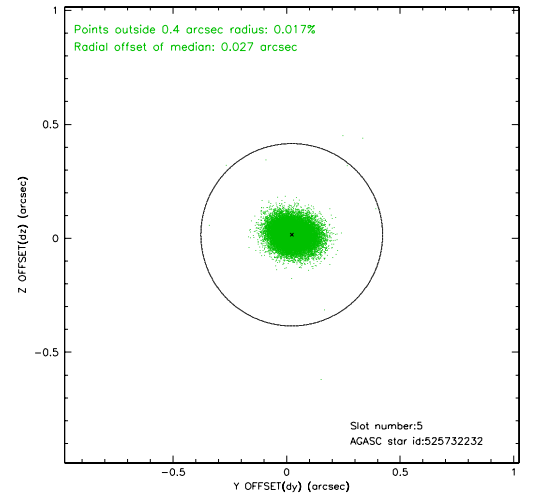
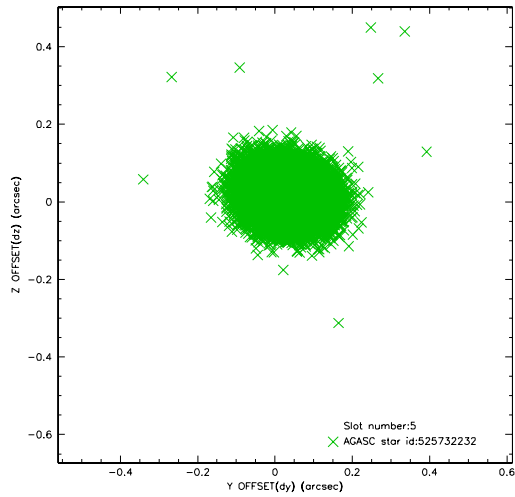
2.4.1 Slot 3



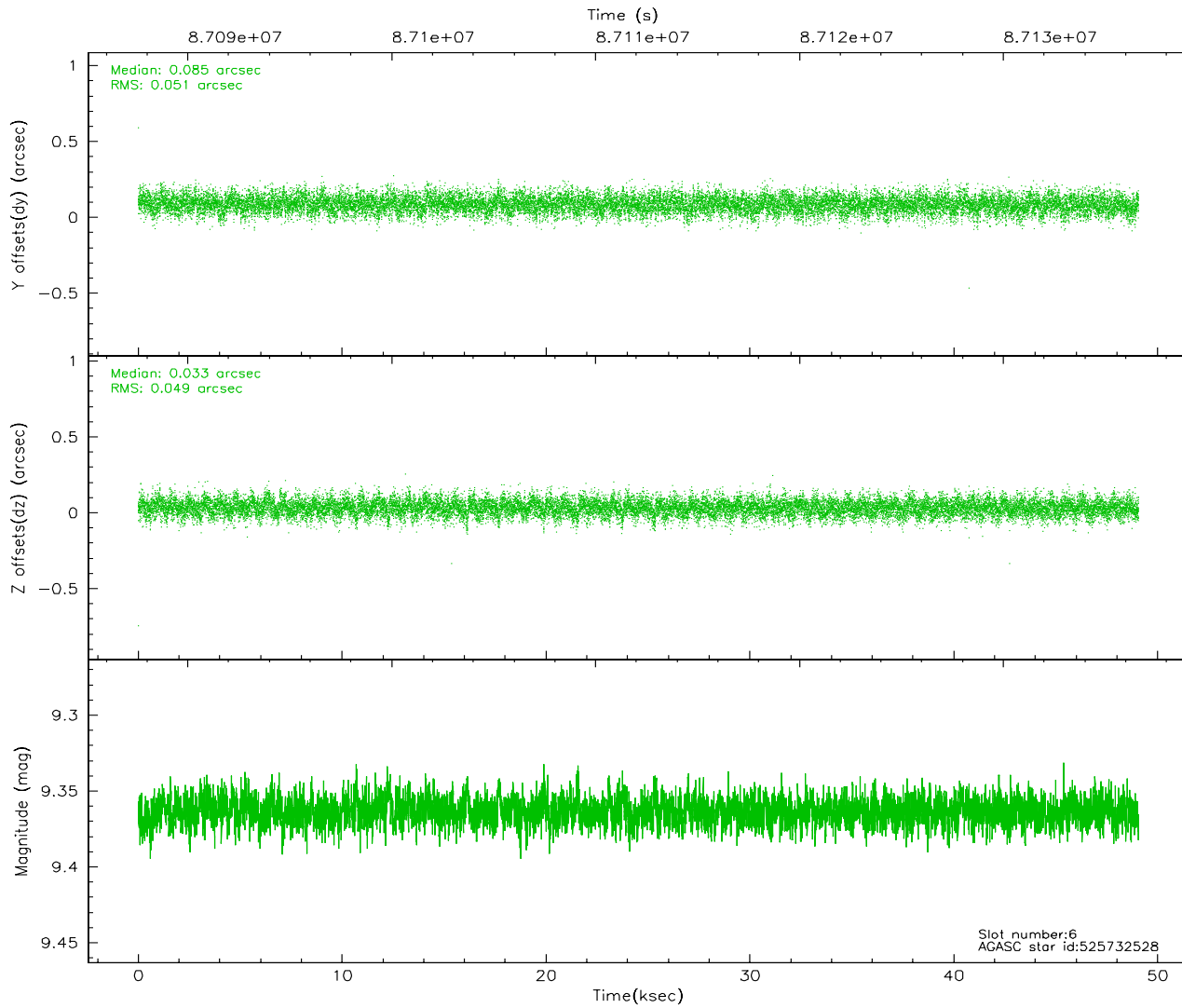
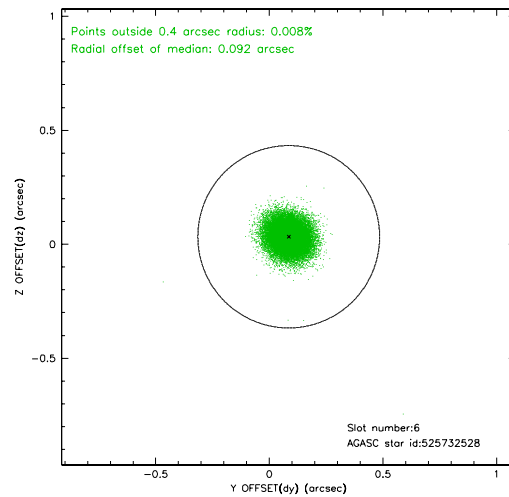
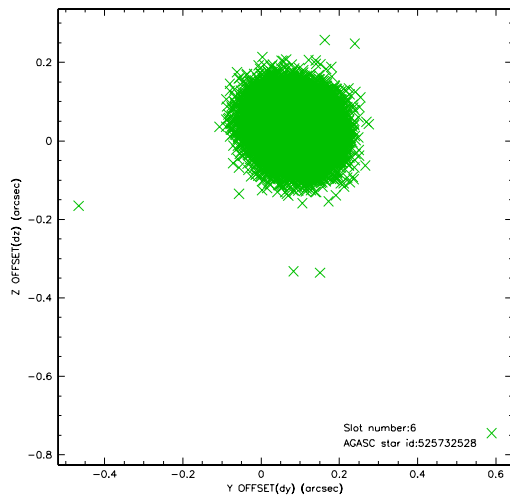
2.4.2 Slot 4



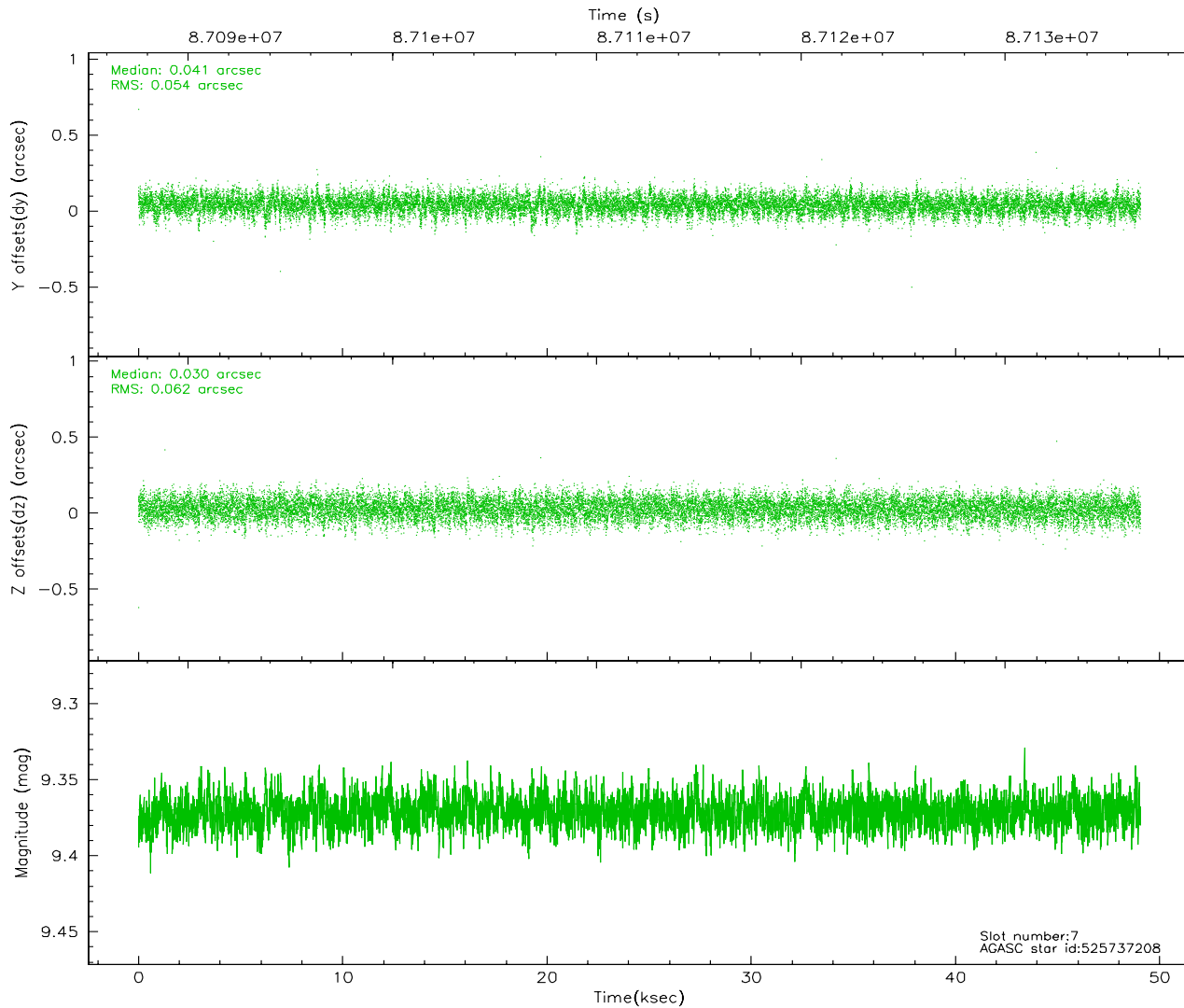
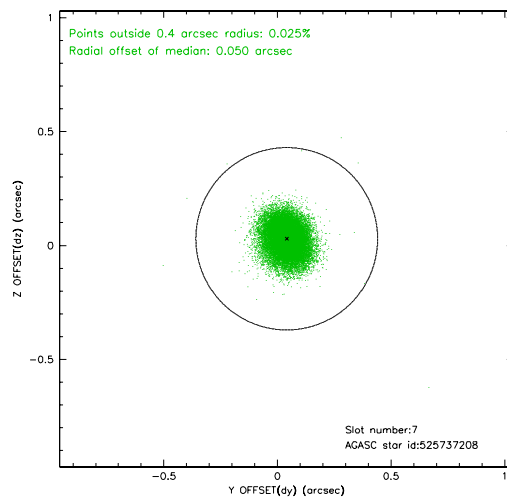
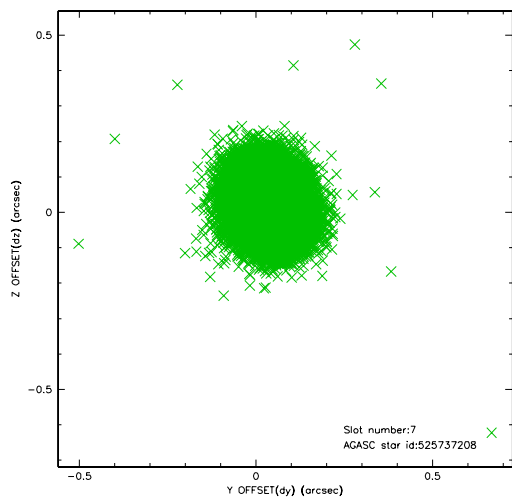
2.4.3 Slot 5



2.4.4 Slot 6

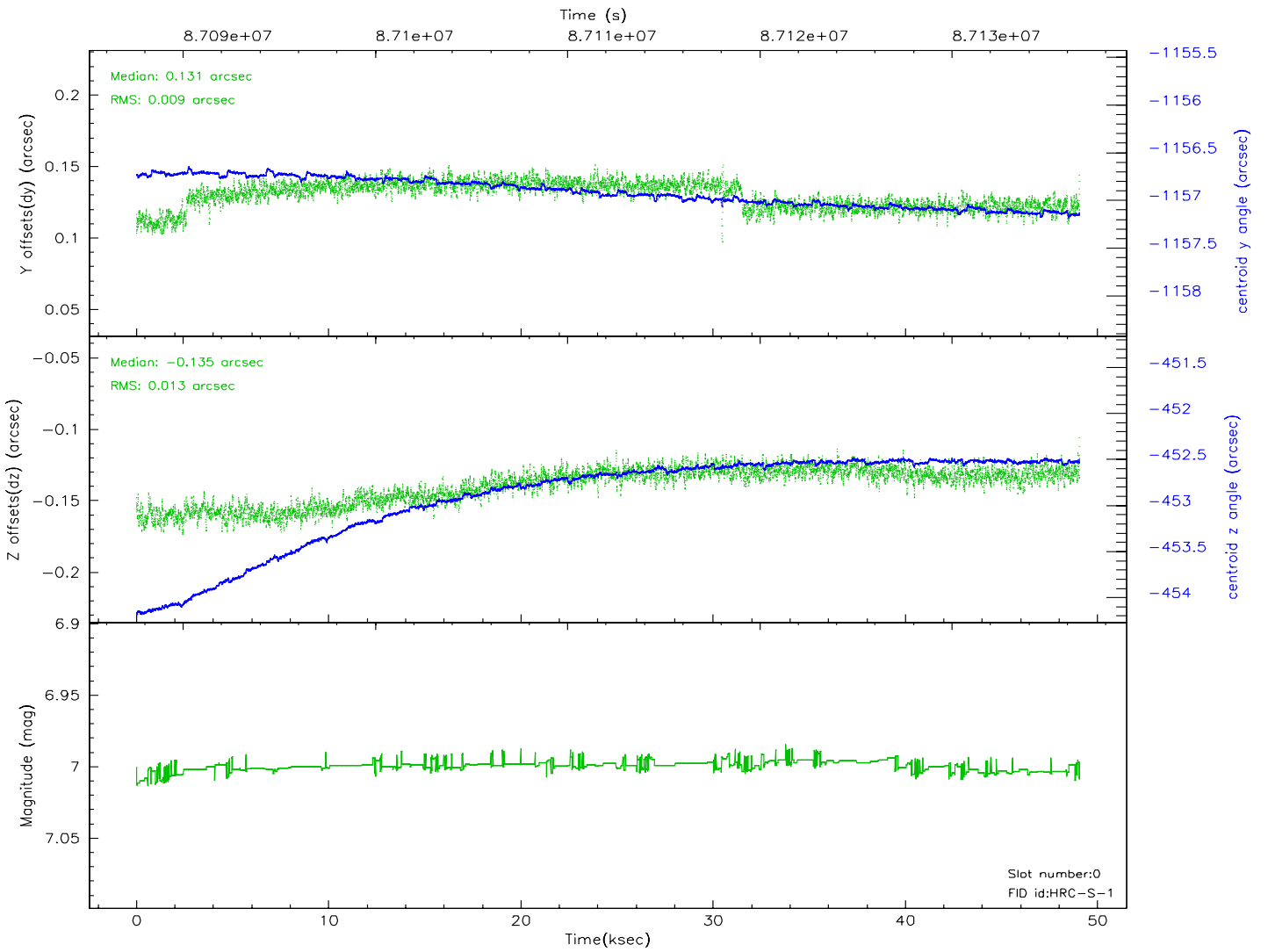
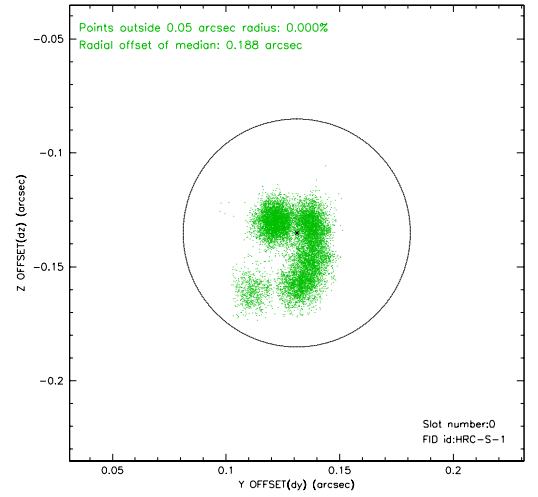
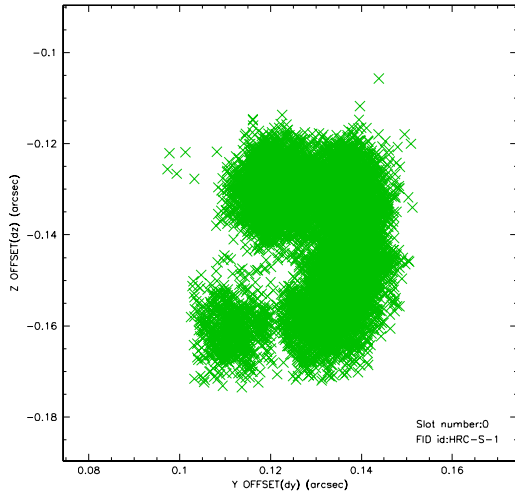


2.4.5 Slot 7

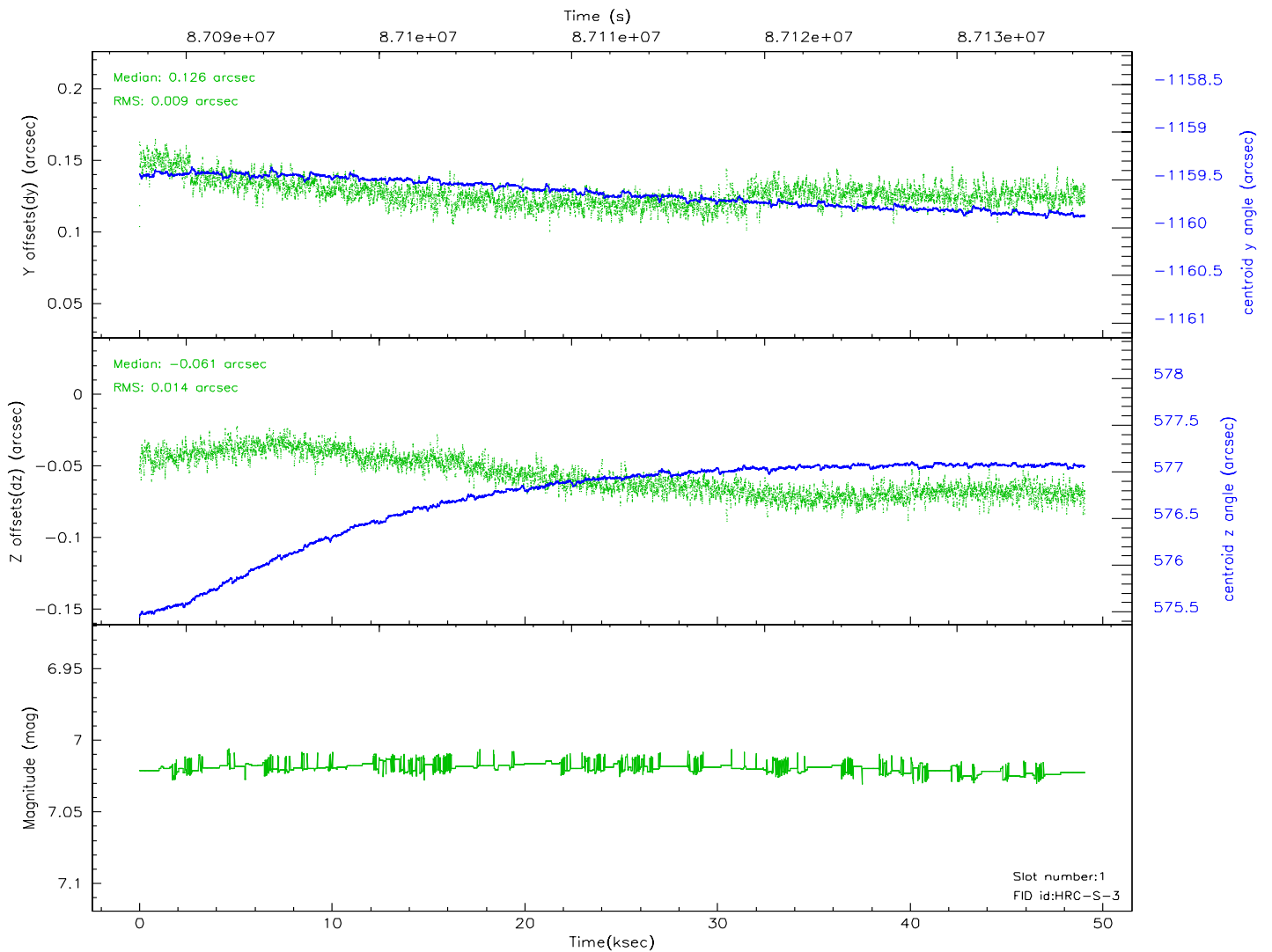
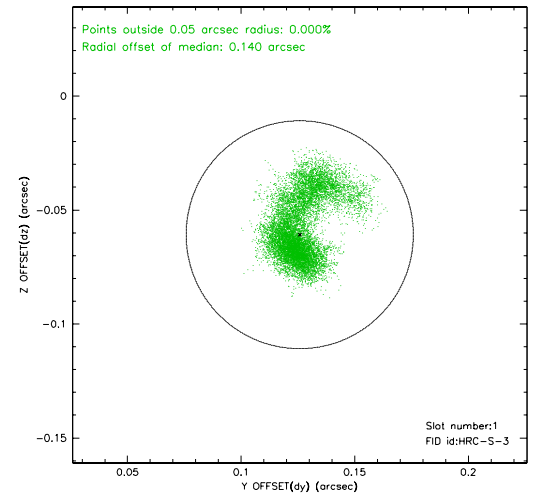
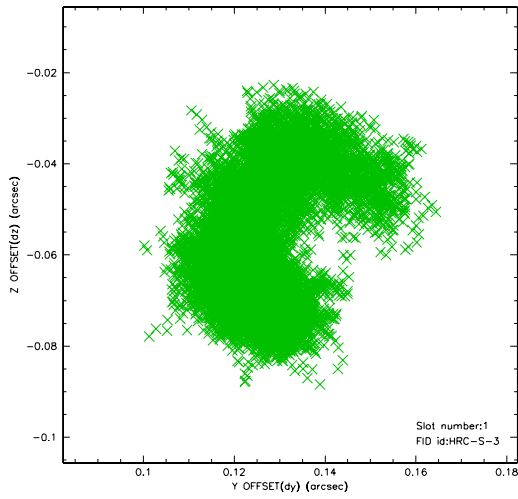


2.5 FID Slots

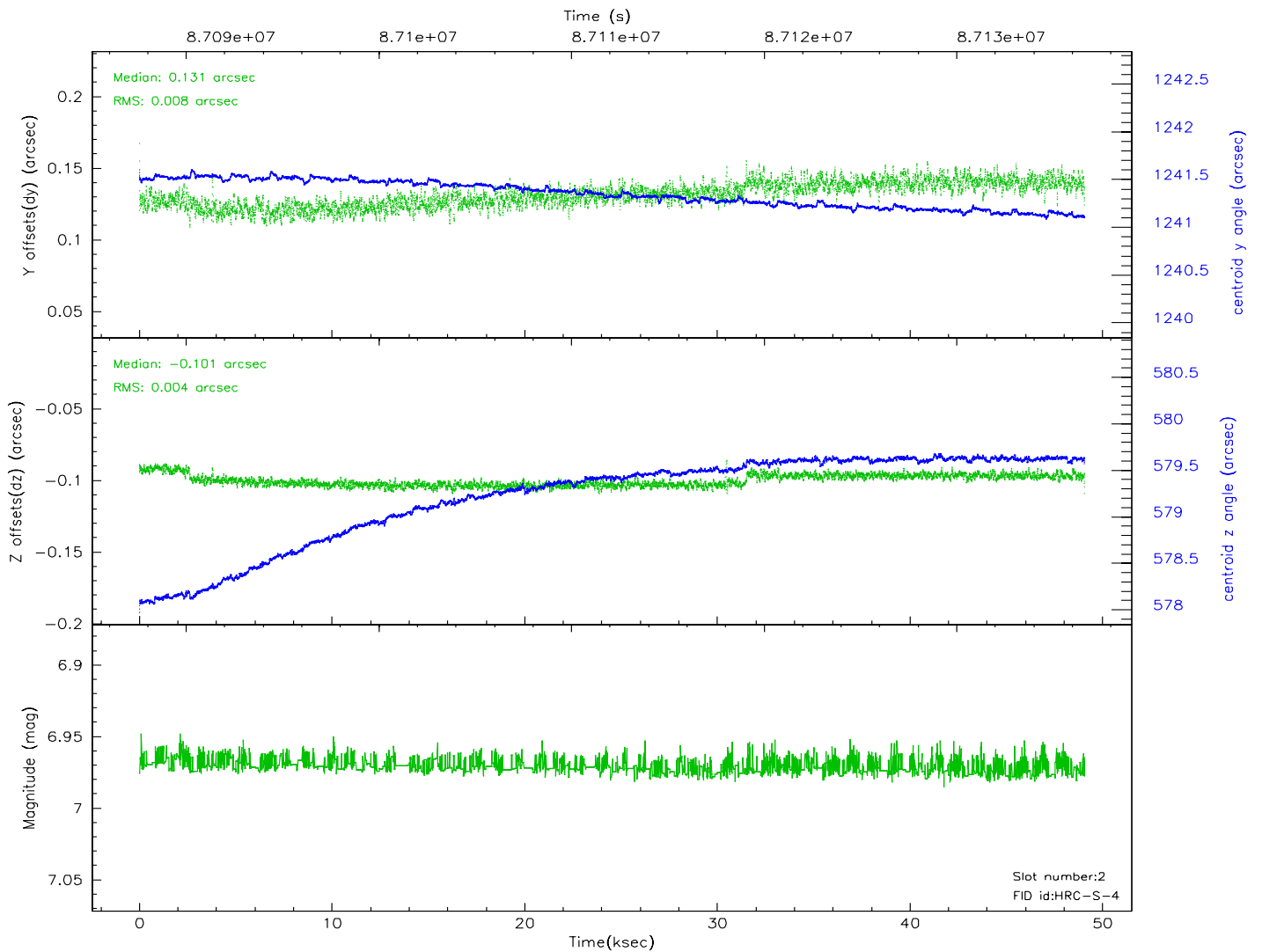
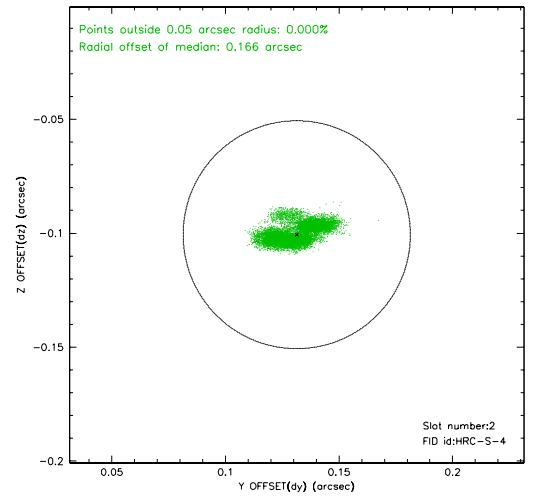
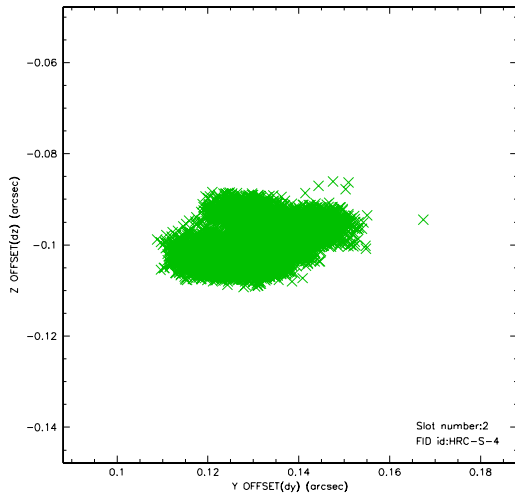
2.5.1 Slot 0



2.5.2 Slot 1

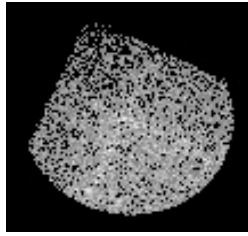


2.5.3 Slot 2

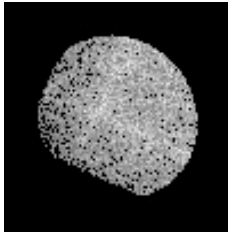


3 Point Sources

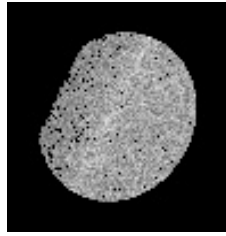
18.33 arcmin



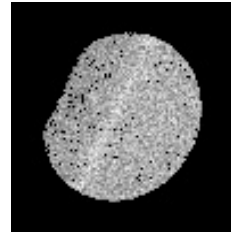
18.32 arcmin



18.28 arcmin



18.12 arcmin



A Summary

A.1 Status

V&V Scientist	Beth Sundheim
V&V Date (YYYY-MM-DD)	2007.06.12
V&V Edition	1
V&V Disposition and Status	OK
V&V Charge Time	48.883

A.2 Comments

There is a brief spike in the count rate (from about 50 counts per second to about 150 counts per second) at approximately 42 ksec into the observation.