

V&V Reference Report

L2 ASCDS Version : 8.4.5

Observation 1857 - L2 Version 6
Chandra X-Ray Center

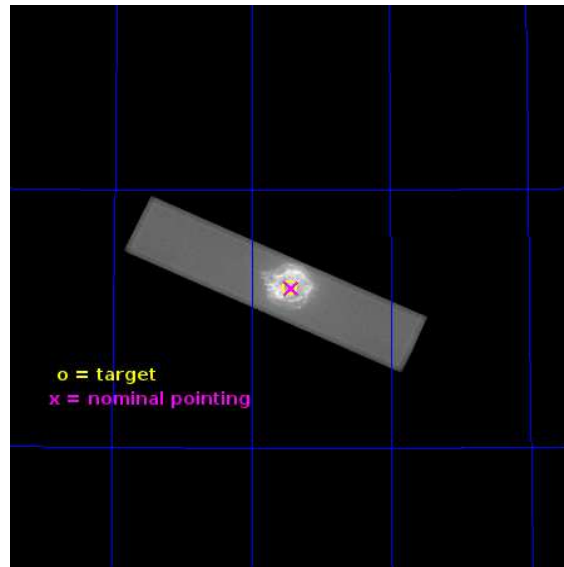
L2 Processing Date : Jun 28 2013

Contents

1	Front	2
2	OBI	3
2.1	OBI	3
2.1.1	Images	3
2.1.2	Parameters	4
2.1.3	Events	4
2.2	Compared Parameters	5
2.3	Aspect	6
2.4	Star Slots	9
2.4.1	Slot 3	9
2.4.2	Slot 4	10
2.4.3	Slot 5	11
2.4.4	Slot 6	12
2.4.5	Slot 7	13
2.5	FID Slots	14
2.5.1	Slot 0	14
2.5.2	Slot 1	15
2.5.3	Slot 2	16
A	Summary	17
A.1	Status	17
A.2	Comments	17

1 Front

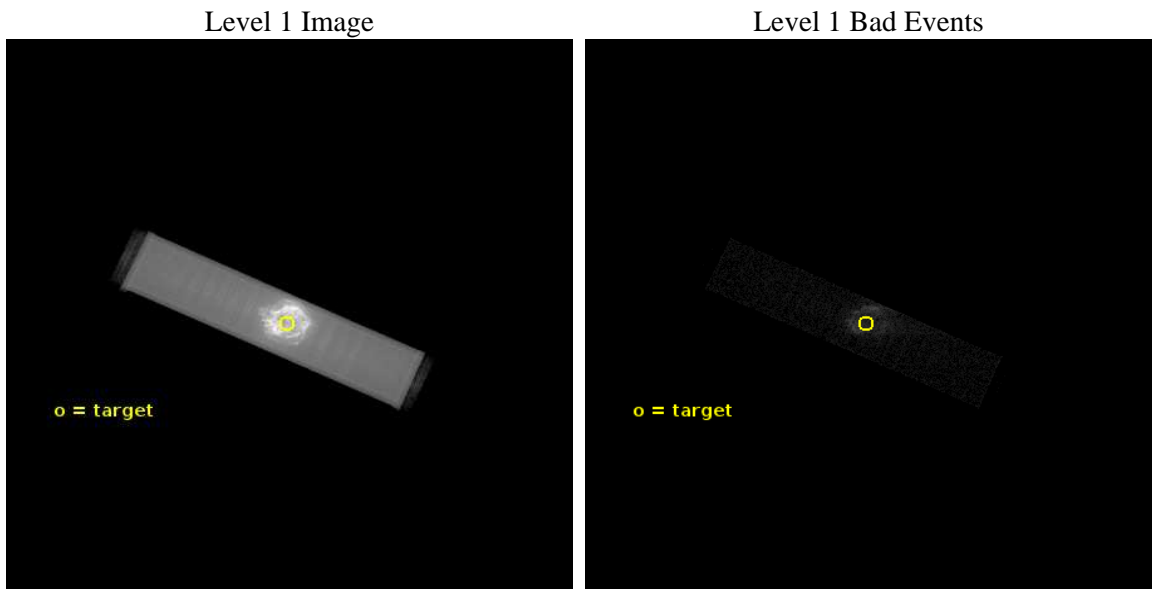
seq_num	500124	Sequence number
obs_id	1857	Observation id
title	SEARCH FOR PULSARS	Proposal title
observer	Dr. Stephen Murray	Principal investigator
object	CAS A	Source name
ra_targ	350.866058	Observer's specified target RA [deg]
dec_targ	58.811694	Observer's specified target Dec [deg]
ra_nom	350.85727955741	Nominal RA [deg]
dec_nom	58.809875782689	Nominal Dec [deg]
roll_nom	204.44426239604	Nominal Roll [deg]
revision	6	Processing version of data
ontime	48901.983095065	[s]
livetime	48362.271442373	Ontime multiplied by DTCOR
l2events	5444392	Number of level 2 events



2 OBI

2.1 OBI

2.1.1 Images



2.1.2 Parameters

obi_num	0	Obi number	sched_exp_time	48930.000000	[s] Scheduled observation exposure time
ascdsver	10	Processing system revision	ontime	48901.983096063	[s]
caldbver	4.5.7	 	l1events	6233421	Number of level 1 events
date	2013-06-28T23:54:42	Date and time of file creation			
revision	6	Processing version of data			

2.1.3 Events

Level 1 Events

	segment 1	segment 2	segment 3
level 1 events	2919	62304975	
rejected events	22	32981	0
rejected %	0%	0%	0%

2.2 Compared Parameters

Parameter	Planned	Actual	Parameter	Planned	Actual
Instrument	HRC	HRC	Obspar format version number	7	7
Detector	HRC-S	HRC-S	Obspar file type	PREDICTED	ACTUAL
Grating	NONE	NONE	Obspar update status	NONE	UPDATED
Data mode	OBSERVING	OBSERVING			
Observation mode	POINTING	POINTING			
[deg] Pointing RA	350.887605	350.8572795574149			
[deg] Pointing Dec	58.833952	58.80987578268883			
[deg] Pointing Roll	204.350989	204.4442623960433			
[mm] SIM focus pos	-1.429586	-1.428180813131781			
[mm] SIM defocus	0.1037507710433287	0.1051558262725154			
[mm] SIM translation stage pos	250.455976	250.466033080201			
[mm] SIM translation stage offset	0	-0.01005468664627074			
[s] Observation start time (MET)	87087709.184000	87086632.11194099			
Observation start date	2000-10-04T23:00:45	2000-10-04T22:43:52			
[s] Observation end time (MET)	87136639.184000	87137247.126352			
Observation end date	2000-10-05T12:36:15	2000-10-05T12:47:27			

2.3 Aspect

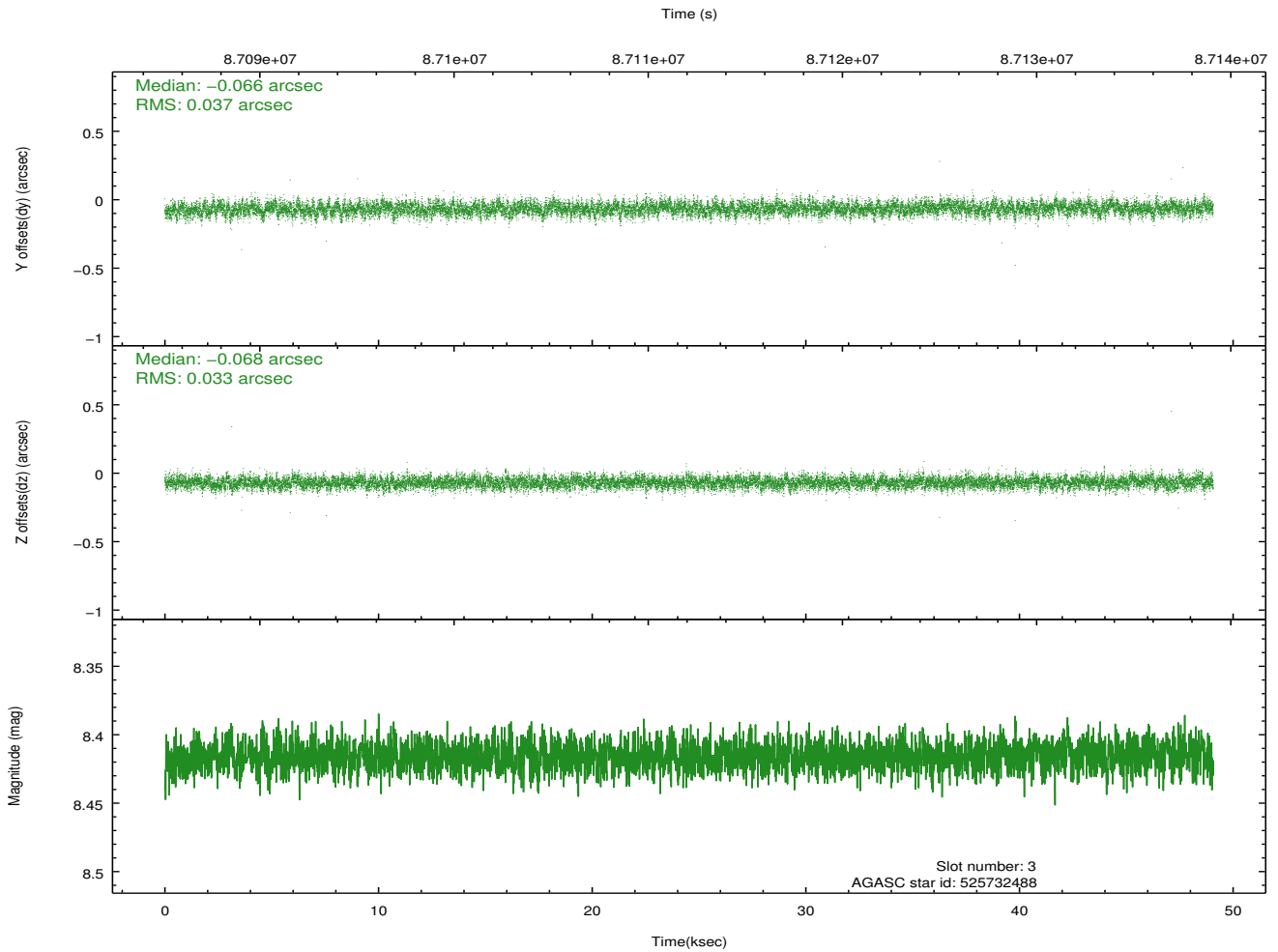
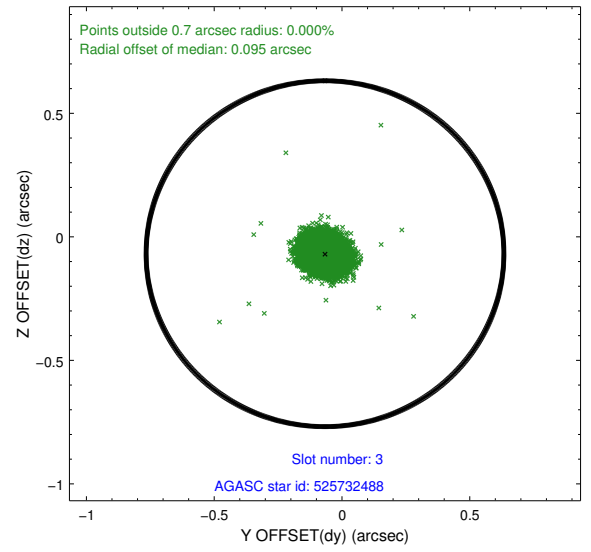
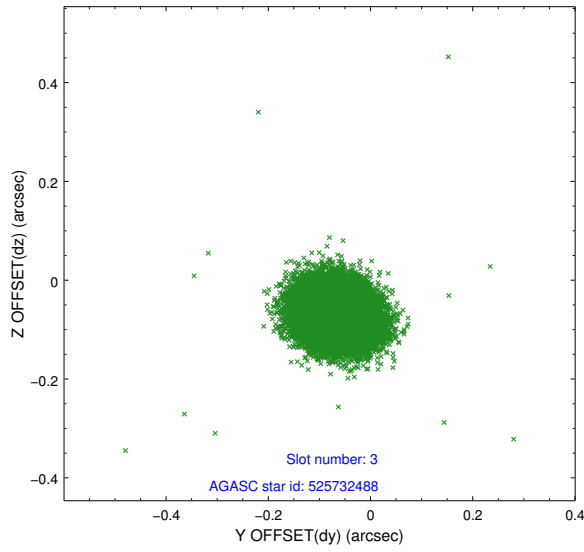
Slot Statistics

slot	status	id	mag	n_pts	med_dy	med_dz	dr1	dr2	ra	dec	mean_y	mean_z
0	FID	HRC-S-1	7.00	11967	0.131	-0.135	0.016	0.030	0.000000	0.000000	-1156.92	-452.91
1	FID	HRC-S-3	7.02	11967	0.126	-0.061	0.017	0.030	0.000000	0.000000	-1159.74	576.66
2	FID	HRC-S-4	6.97	11968	0.131	-0.101	0.010	0.016	0.000000	0.000000	1241.25	579.26
3	GUIDE	525732488	8.42	23936	-0.066	-0.068	0.052	0.085	350.087090	58.516915	1838.99	411.13
4	GUIDE	525735976	8.89	23928	-0.084	-0.008	0.068	0.112	350.142956	58.277622	2107.76	1236.50
5	GUIDE	525732232	9.12	23924	0.022	0.015	0.072	0.118	351.669550	58.757012	-1218.34	846.81
6	GUIDE	525732528	9.36	23923	0.085	0.033	0.072	0.118	351.607241	59.298932	-1897.03	-986.07
7	GUIDE	525737208	9.37	23929	0.040	0.030	0.085	0.138	351.154109	59.407897	-1296.12	-1681.95

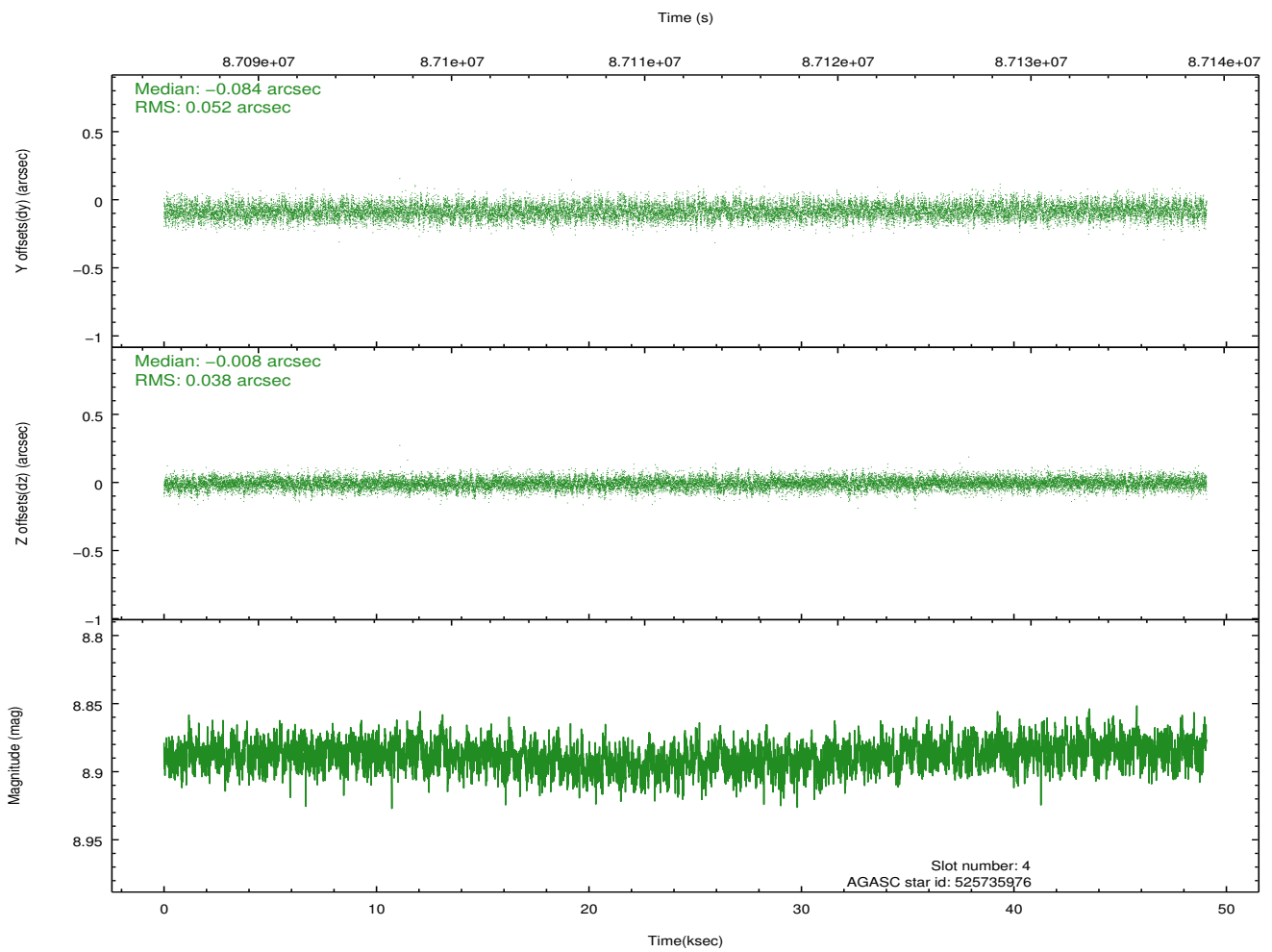
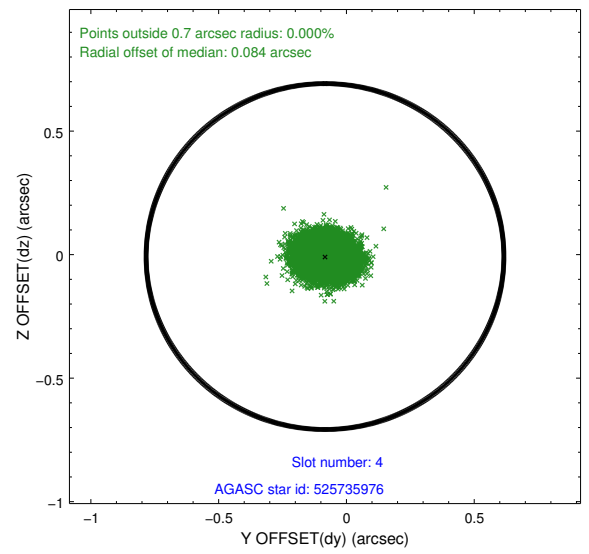
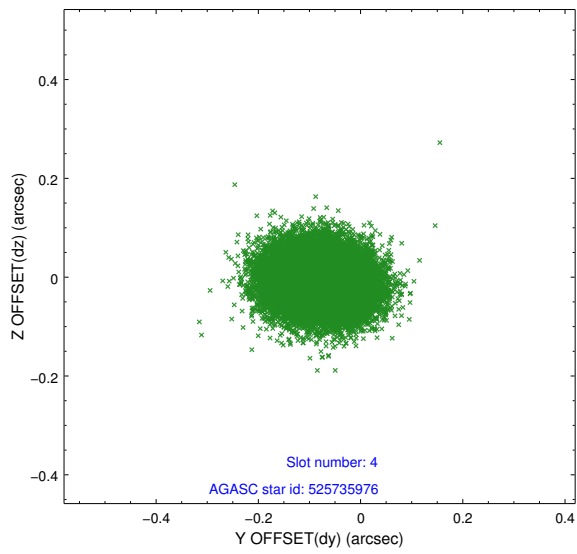
∞

2.4 Star Slots

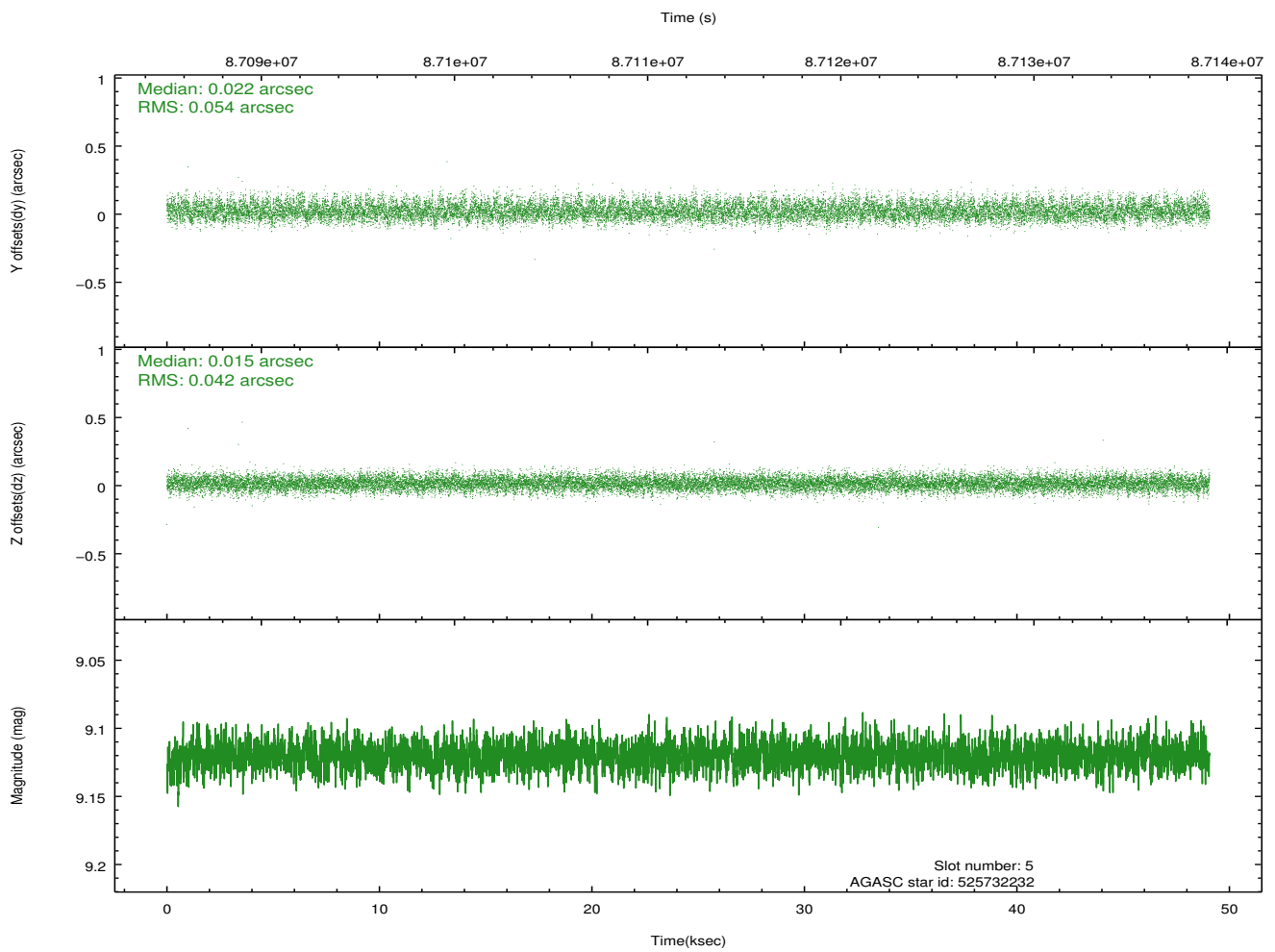
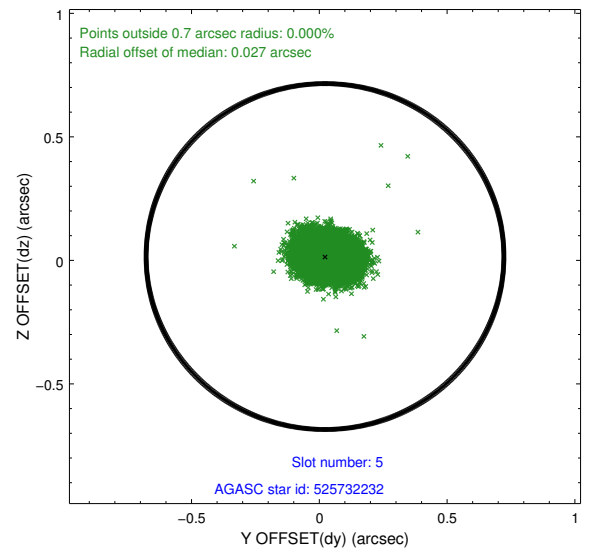
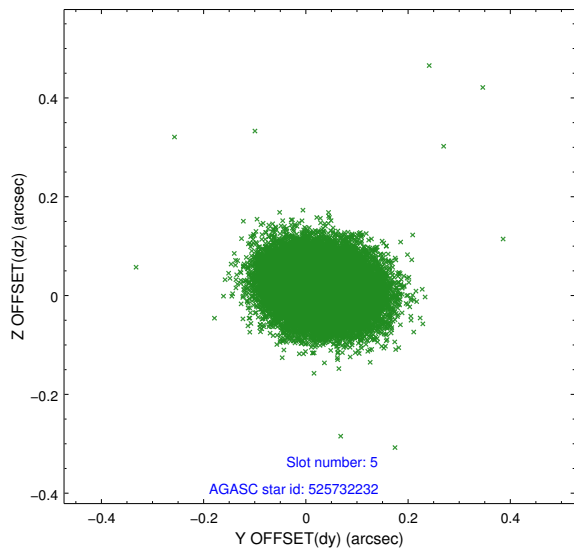
2.4.1 Slot 3



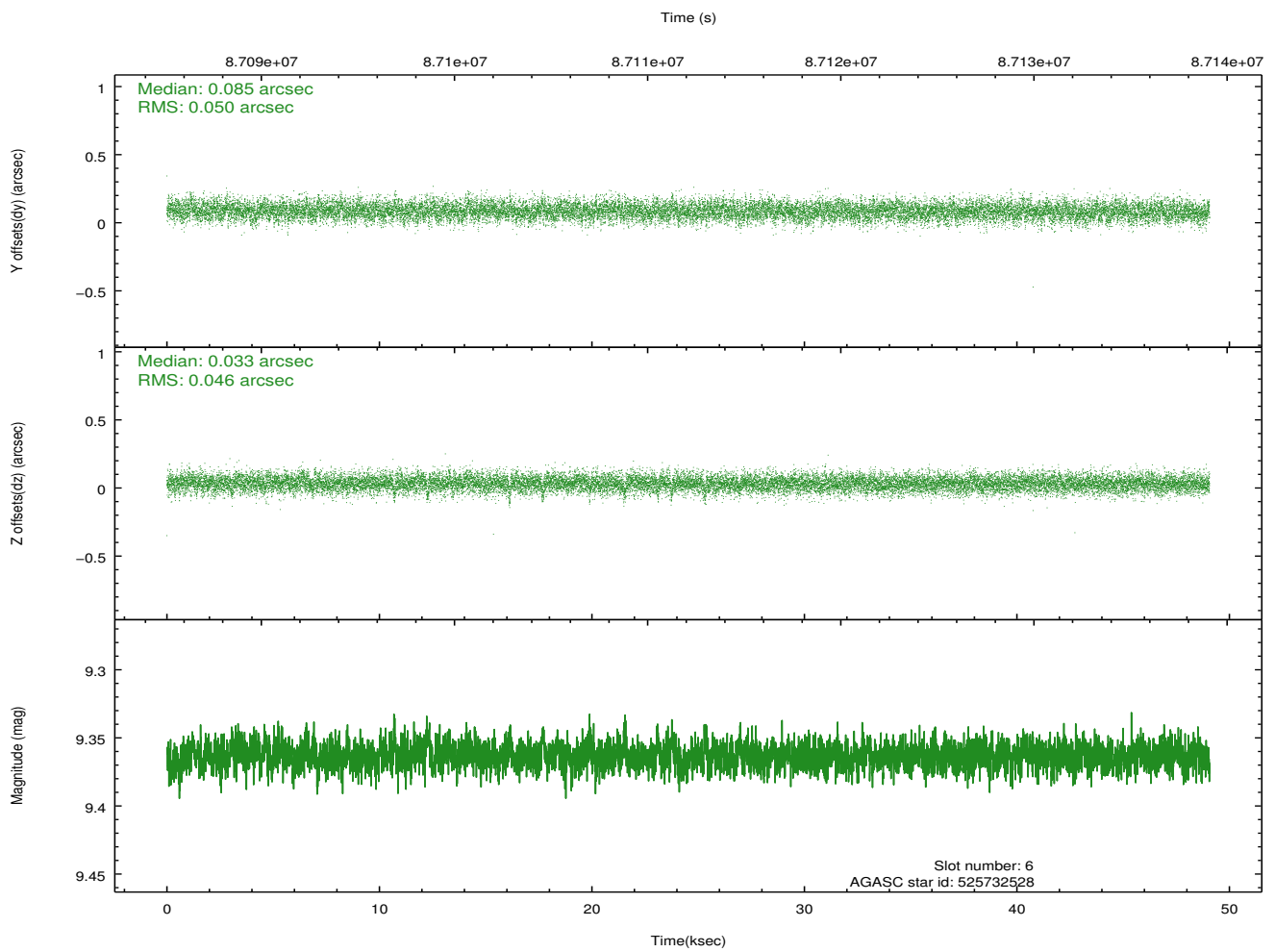
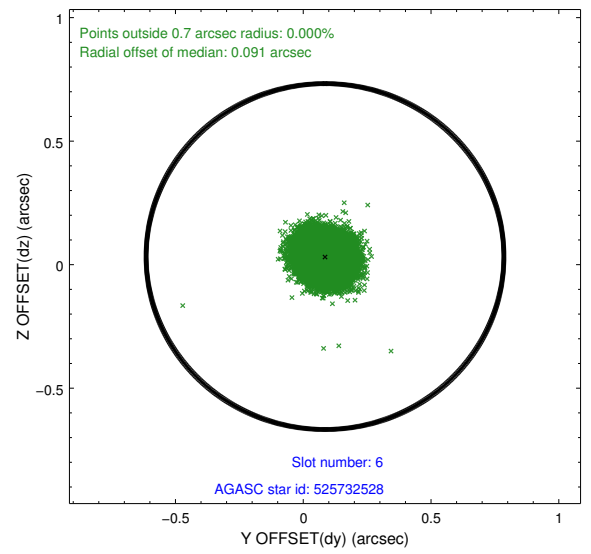
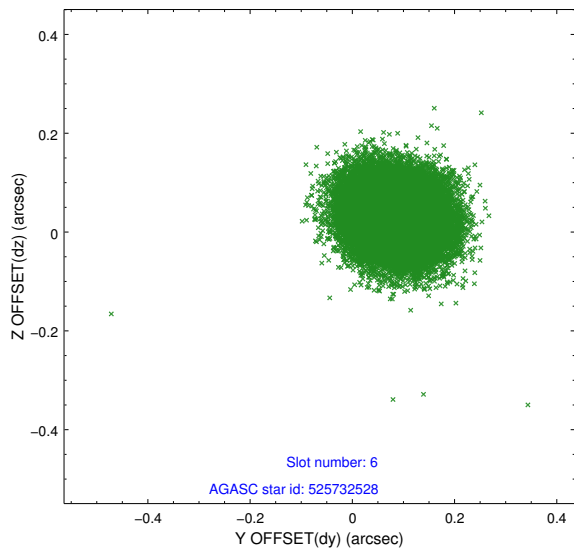
2.4.2 Slot 4



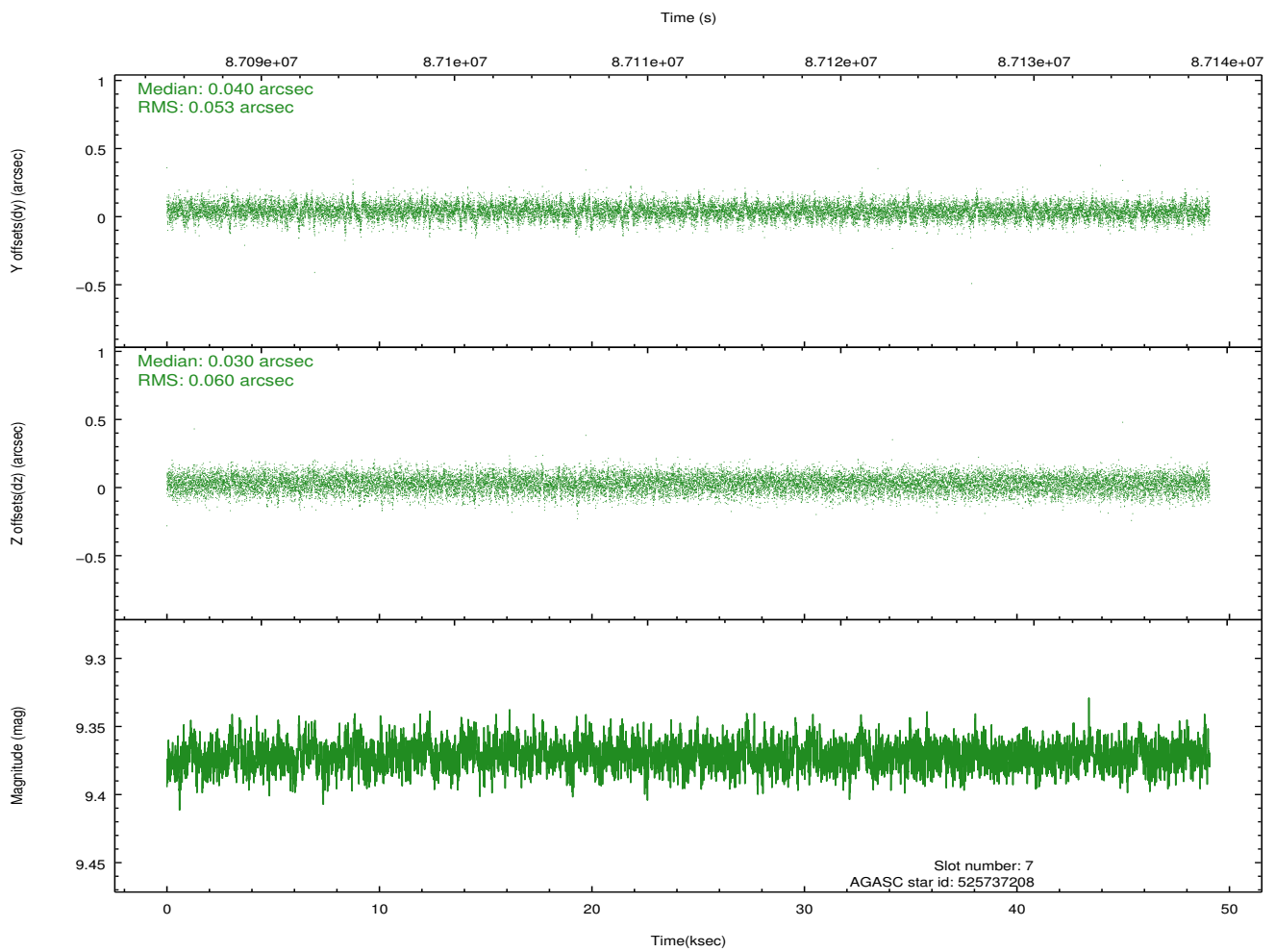
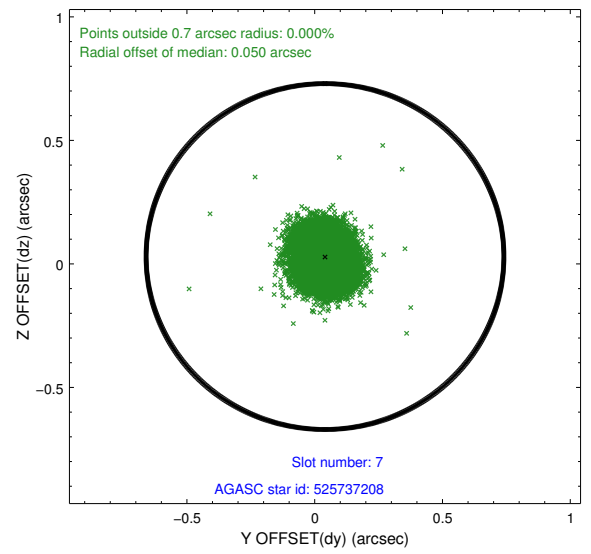
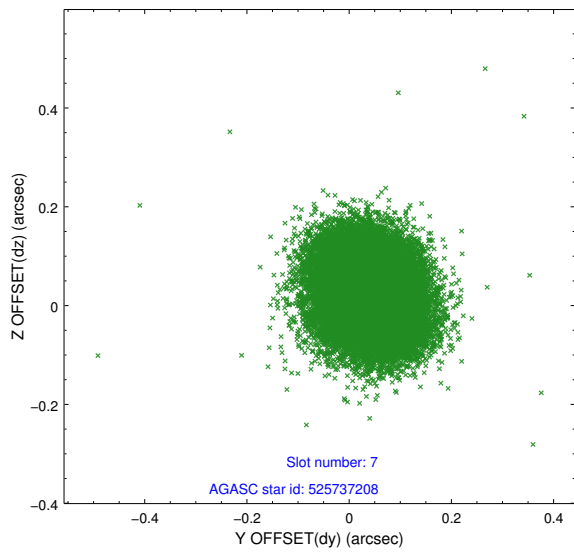
2.4.3 Slot 5



2.4.4 Slot 6

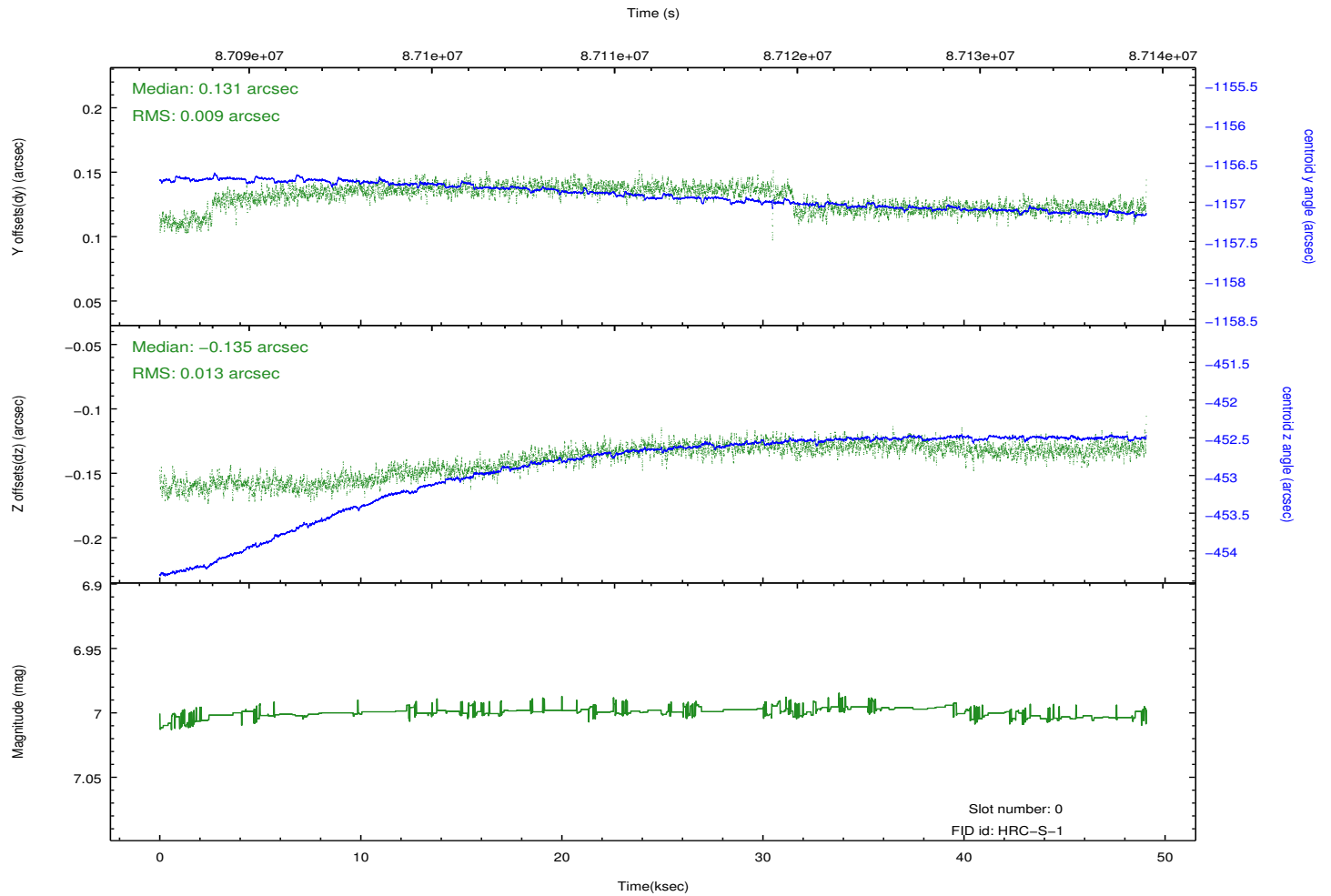
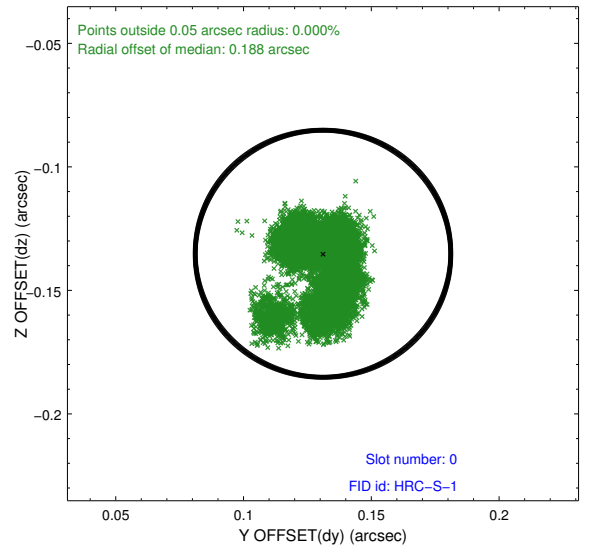
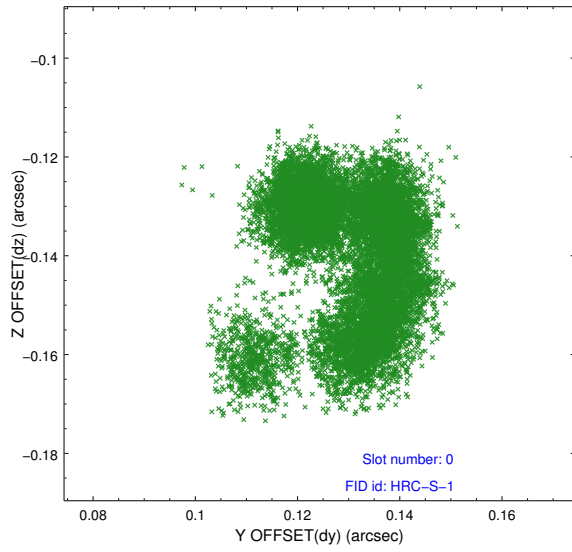


2.4.5 Slot 7

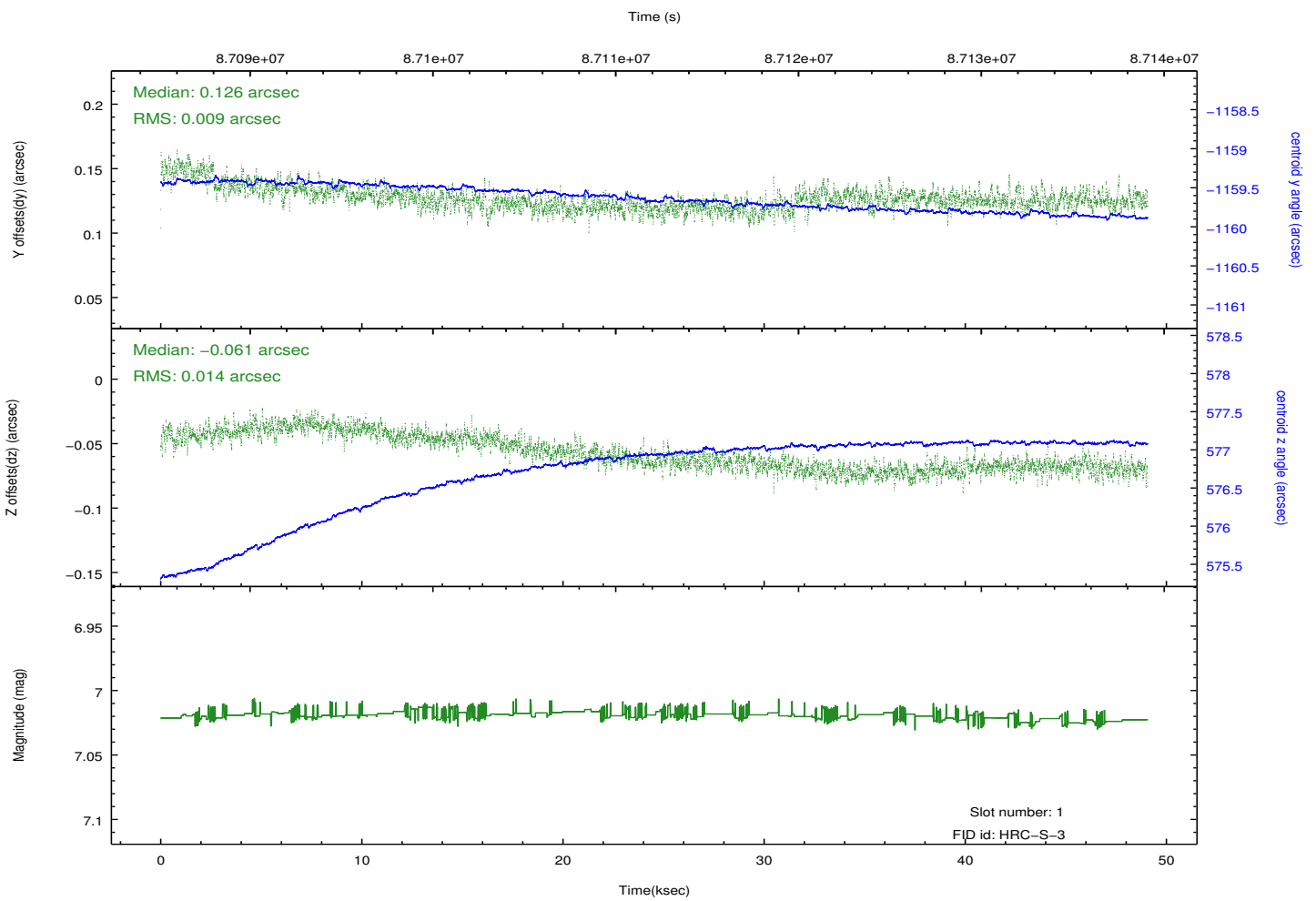
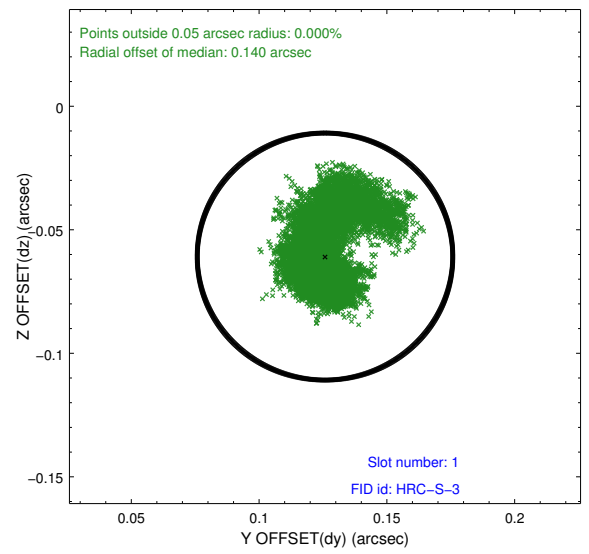
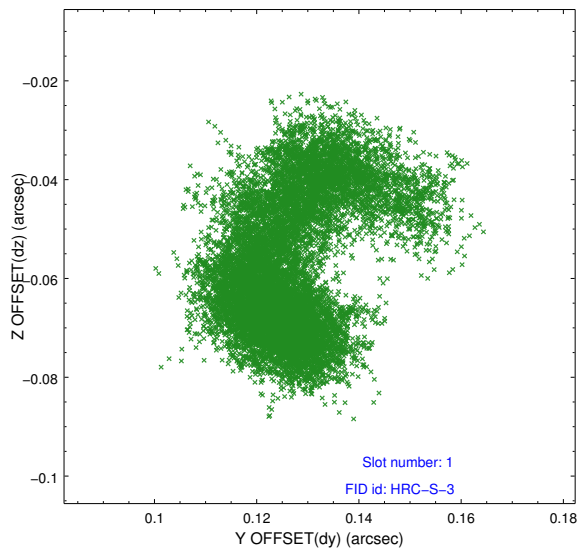


2.5 FID Slots

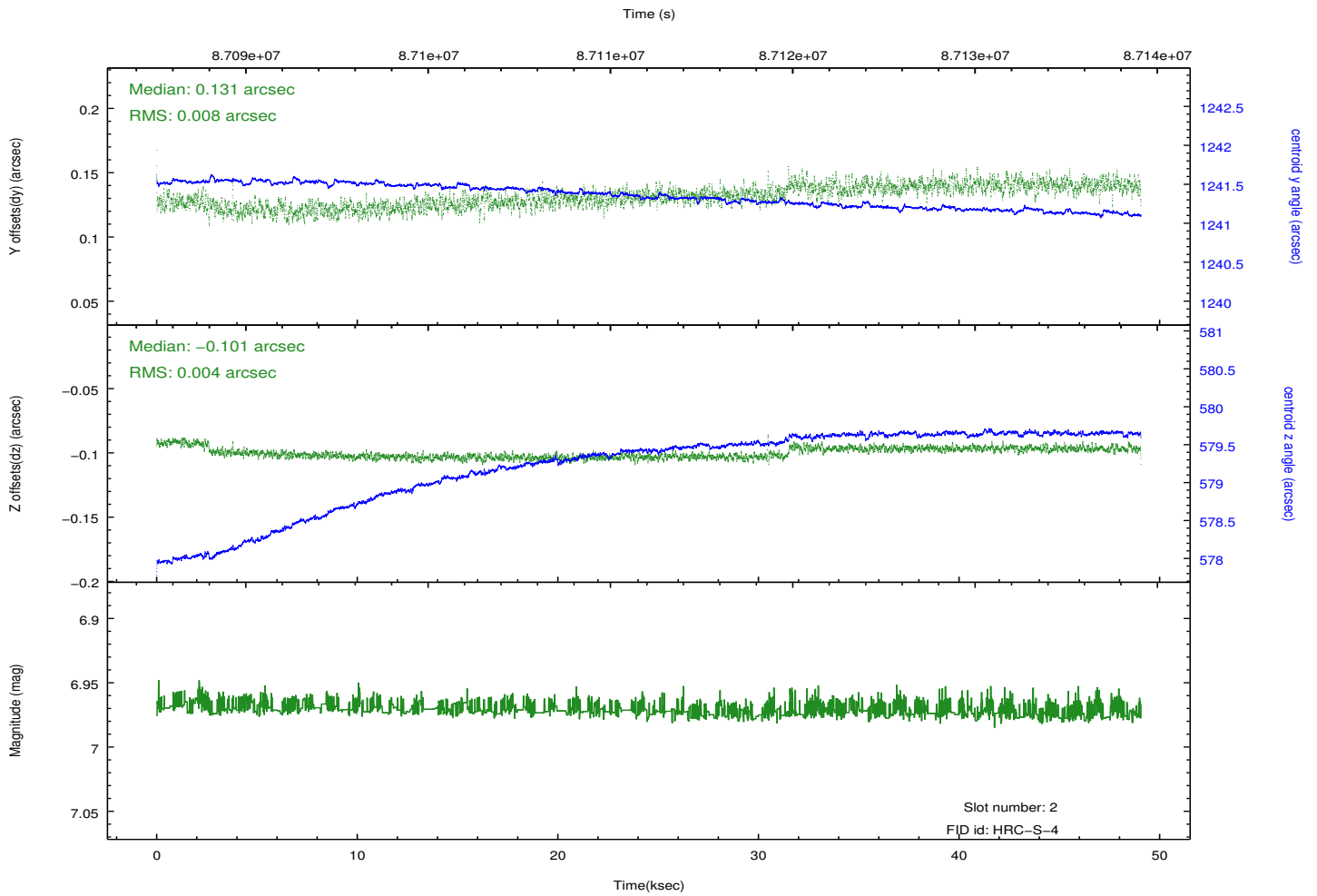
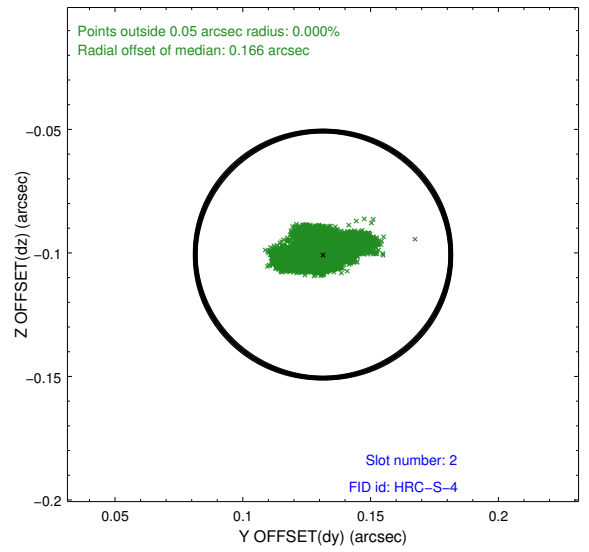
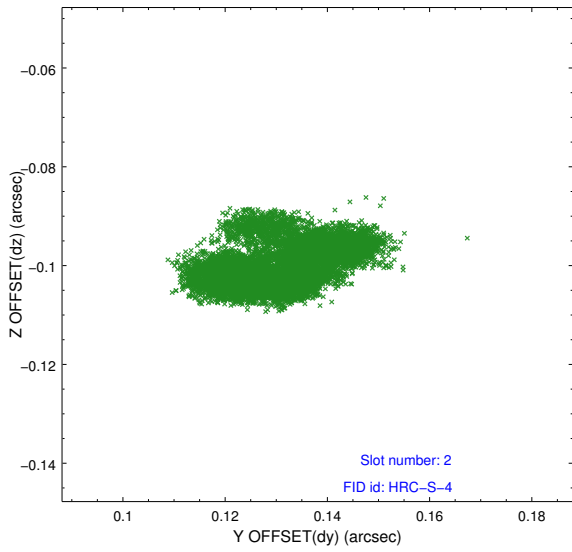
2.5.1 Slot 0



2.5.2 Slot 1



2.5.3 Slot 2



A Summary

A.1 Status

V&V Scientist	Beth Sundheim
V&V Date (YYYY-MM-DD)	2013.07.02
V&V Edition	1
V&V Disposition and Status	OK
V&V Charge Time	48.883

A.2 Comments