

V&V Reference Report

L2 ASCDS Version : 8.4.5

Observation 1997 - L2 Version 4
Chandra X-Ray Center

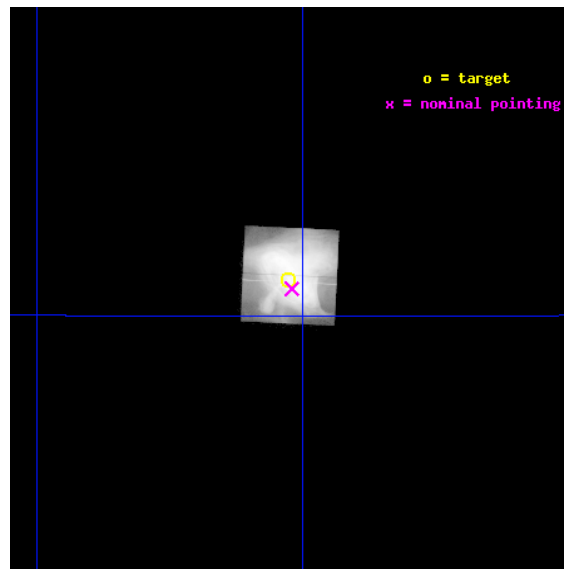
L2 Processing Date : Sep 14 2012

Contents

1	Front	2
2	OBI	3
2.1	OBI	3
2.1.1	Images	3
2.1.2	Parameters	4
2.1.3	Events	4
2.2	Compared Parameters	5
2.3	Aspect	6
2.4	Star Slots	9
2.4.1	Slot 3	9
2.4.2	Slot 4	10
2.4.3	Slot 5	11
2.4.4	Slot 6	12
2.4.5	Slot 7	13
2.5	FID Slots	14
2.5.1	Slot 0	14
2.5.2	Slot 1	15
2.5.3	Slot 2	16
A	Summary	17
A.1	Status	17
A.2	Comments	17

1 Front

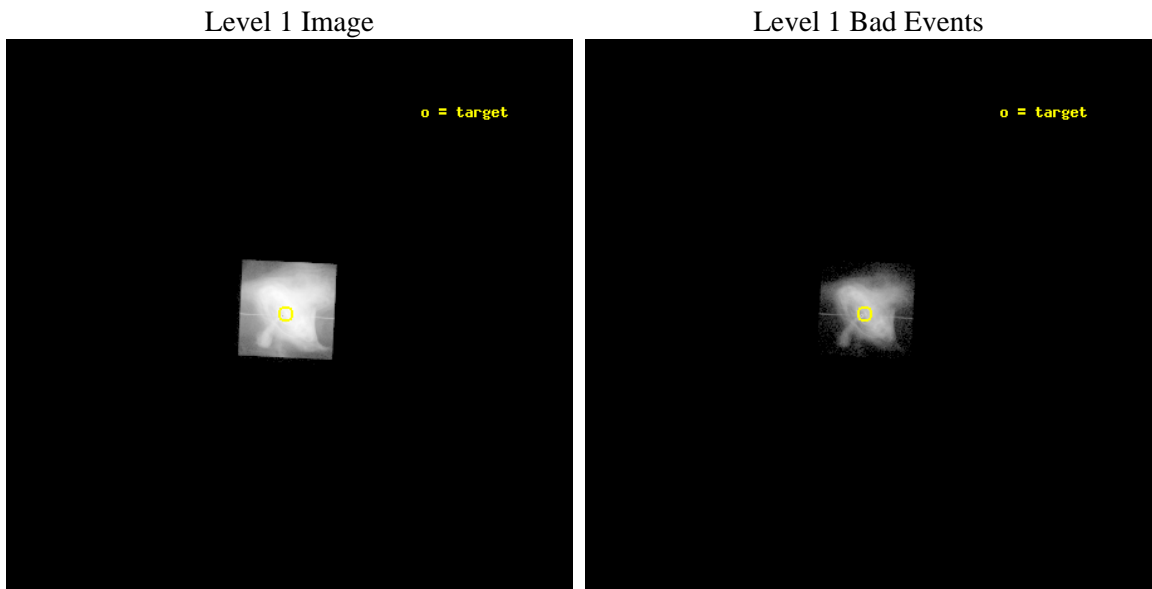
seq_num	500174	Sequence number
obs_id	1997	Observation id
title	COORDINATED CHANDRA/HST OBSERVATIONS OF THE CRAB NEBULA	Proposal t
observer	PROF. JEFF HESTER	Principal investigator
object	CRAB NEBULA	Source name
dtcycle	0	
cycle	P	events from which exps? Prim/Second/Both
ra_targ	83.631667	Observer's specified target RA [deg]
dec_targ	22.015667	Observer's specified target Dec [deg]
ra_nom	83.63000942496	Nominal RA [deg]
dec_nom	22.011441071774	Nominal Dec [deg]
roll_nom	272.72066227075	Nominal Roll [deg]
revision	4	Processing version of data
ontime	14702.014755711	Sum of GTIs [s]
livetime	2569.6533638114	Livetime [s]
ontime7	14702.014755711	Sum of GTIs [s]
l2events	8799685	Number of level 2 events



2 OBI

2.1 OBI

2.1.1 Images



2.1.2 Parameters

obi_num	0	Obi number	sched_exp_time	24153.809000	[s] Scheduled observation exposure time
ascdsver	8.4.5	Processing system revision	ontime	14702.014755711	Sum of GTIs [s]
caldbver	4.5.1.1	 	ontime7	14702.014755711	Sum of GTIs [s]
date	2012-09-14T09:11:00	Date and time of file creation	l1events	9963462	Number of level 1 events
revision	4	Processing version of data			

2.1.3 Events

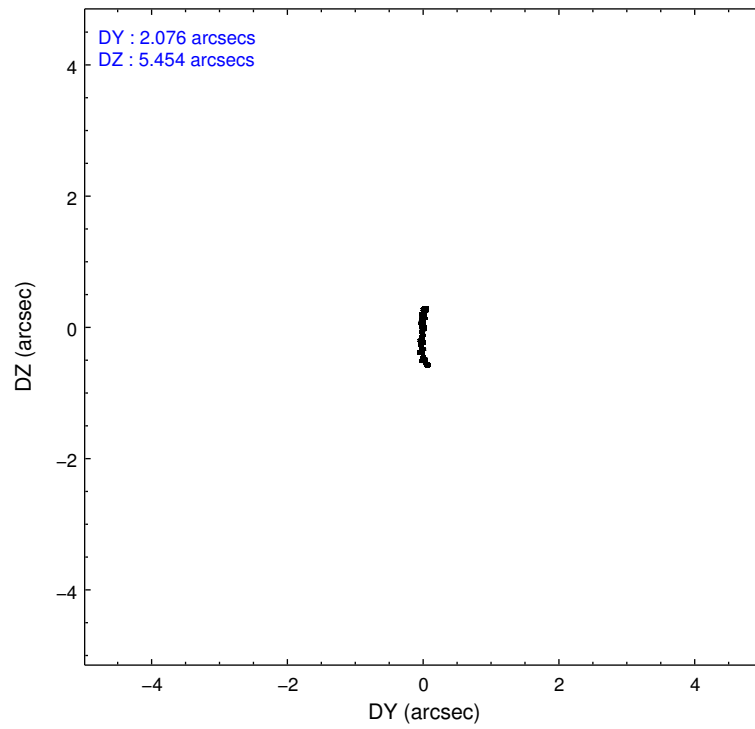
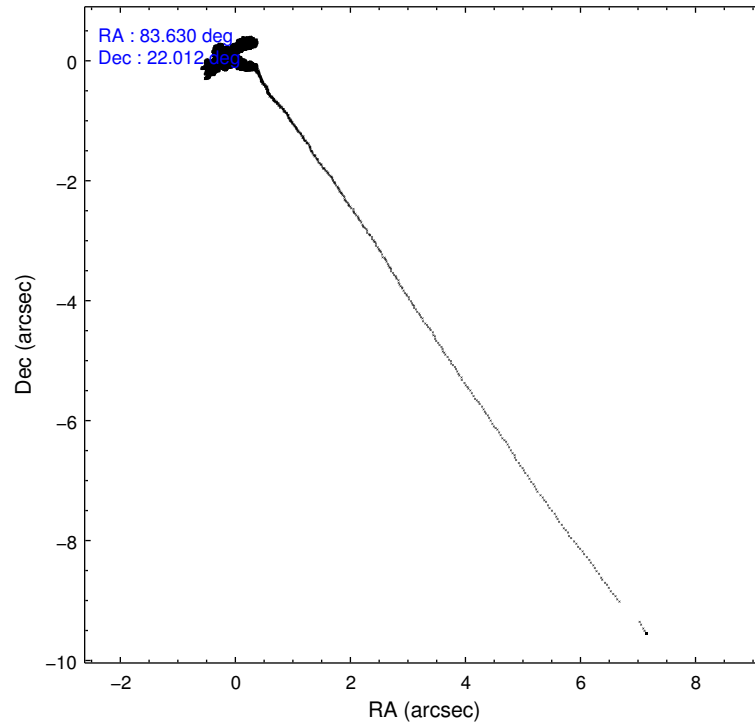
	ccd 7
level 1 events	9963462
rejected events	1068000
rejected %	10%

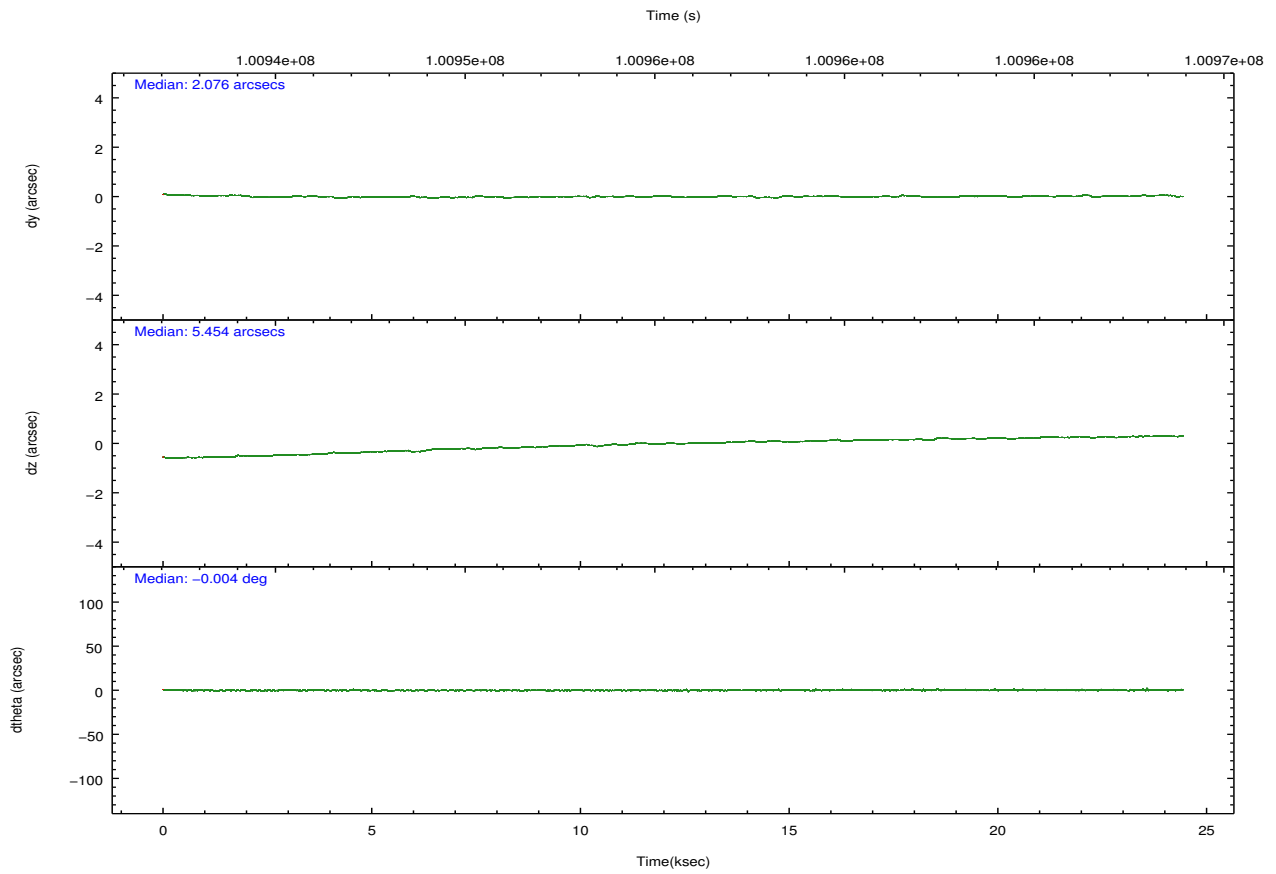
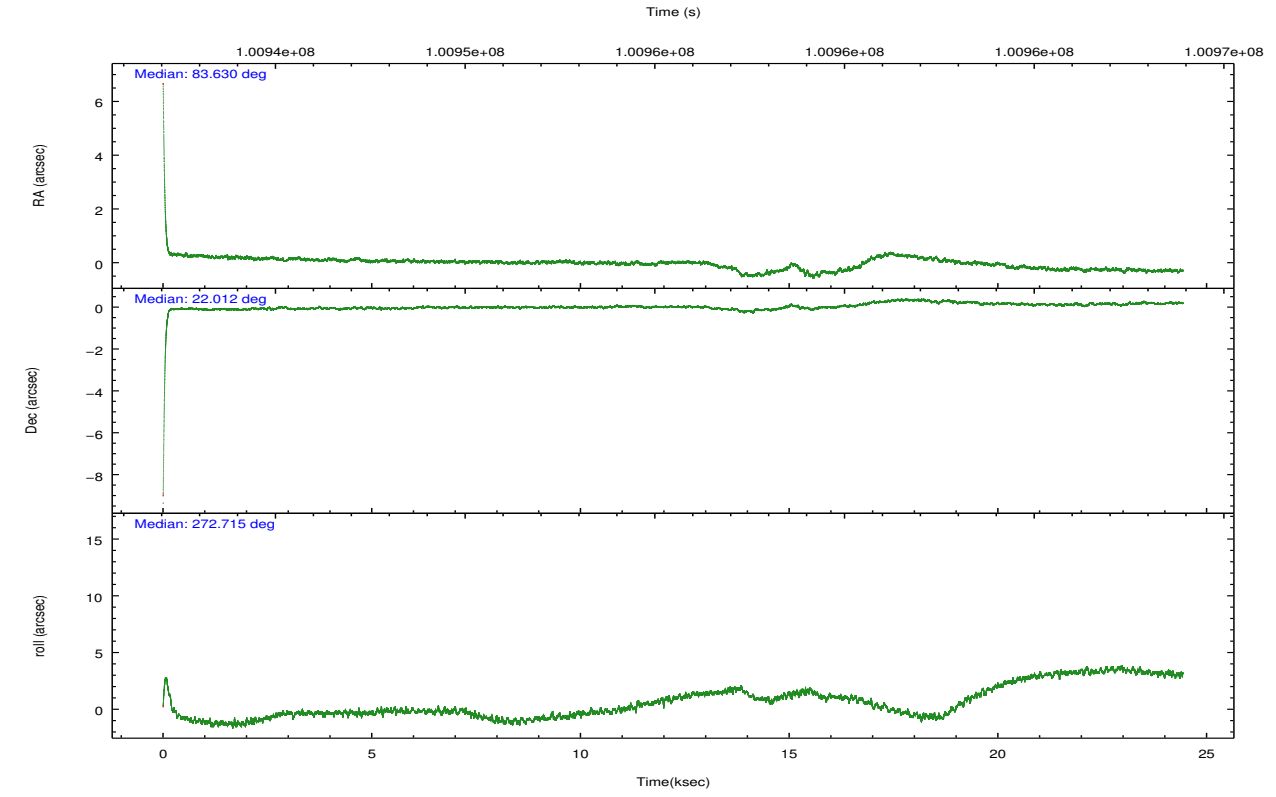
	ccd 7
grade 0 events	2084356
	20%
grade 1 events	137045
	1%
grade 2 events	2378351
	23%
grade 3 events	1053165
	10%
grade 4 events	1025098
	10%
grade 5 events	368641
	3%
grade 6 events	2428444
	24%
grade 7 events	488362
	4%

2.2 Compared Parameters

Parameter	Planned	Actual	Parameter	Planned	Actual
Instrument	ACIS	ACIS	Obspar format version number	7	7
Detector	ACIS-7	ACIS-7	Obspar file type	PREDICTED	ACTUAL
Grating	NONE	NONE	Obspar update status	NONE	UPDATED
Data mode	GRADED	GRADED	Number of optional ACIS chips dropped	0	0
Observation mode	POINTING	POINTING	On-chip summing requested	N	N
[deg] Pointing RA	83.613847	83.63000942496032	Subarray requested	CUSTOM	CUSTOM
[deg] Pointing Dec	22.034273	22.0114410717737	Subarray start row	49	49
[deg] Pointing Roll	272.570097	272.7206622707536	Subarray row count	300	300
[s] Window start time (MET)	100850464.184000	100850464.184000	Alternating exposures requested	N	N
[s] Window stop time (MET)	101264464.184000	101264464.184000	[s] Primary exposure time	0.000000	0.2
[mm] SIM focus pos	-0.684267	-0.6828225247311905			
[mm] SIM defocus	0	0.001444936568705701			
[mm] SIM translation stage pos	-182.620523	-182.6197489829059			
[mm] SIM translation stage offset	-7.512	-7.512773600101895			
[s] Observation start time (MET)	100943543.184000	100942531.90437			
Observation start date	2001-03-14T07:51:19	2001-03-14T07:35:31			
[s] Observation end time (MET)	100967697.184000	100968011.86785			
Observation end date	2001-03-14T14:33:53	2001-03-14T14:40:11			
Read mode	TIMED	TIMED			

2.3 Aspect



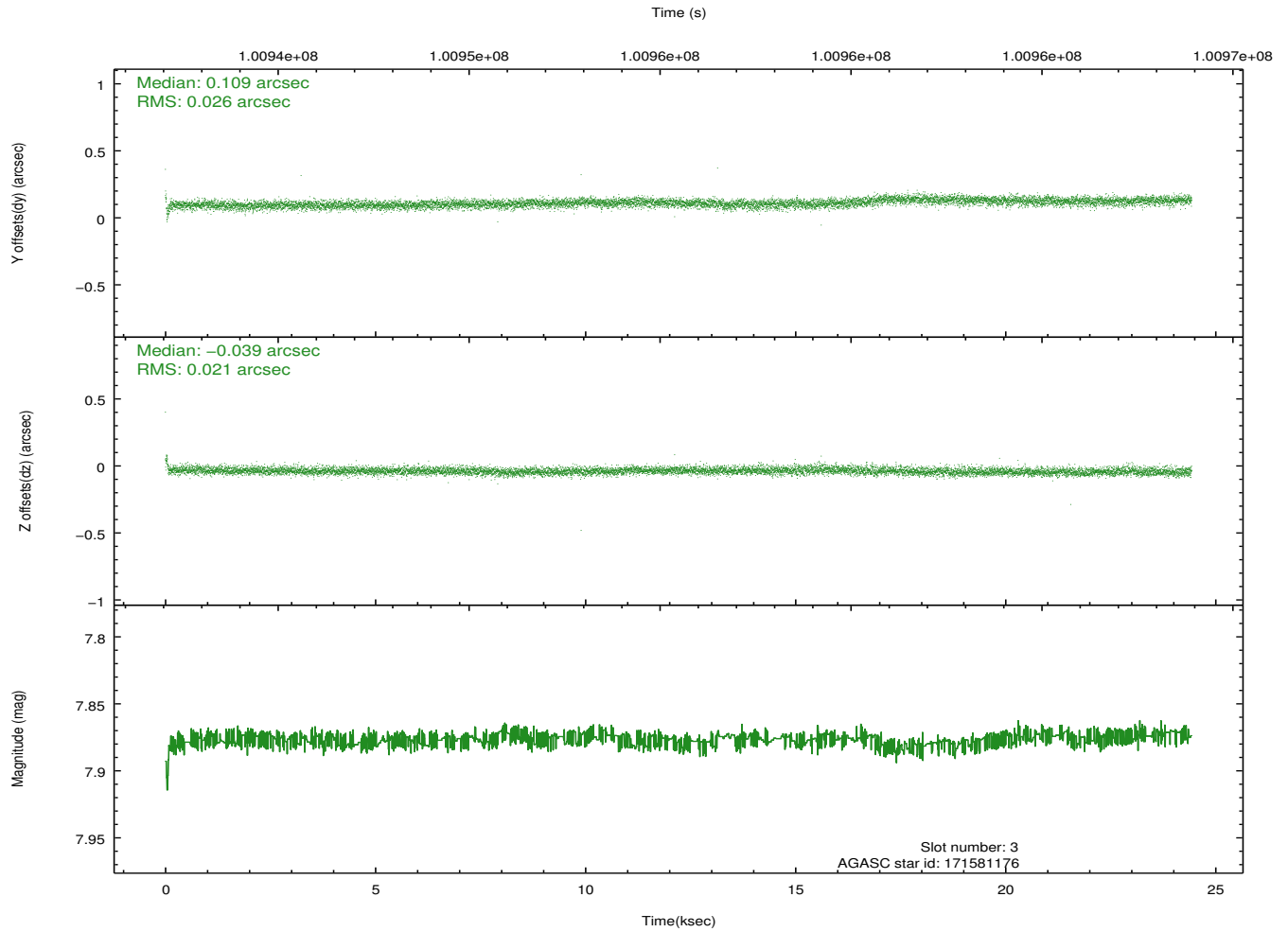
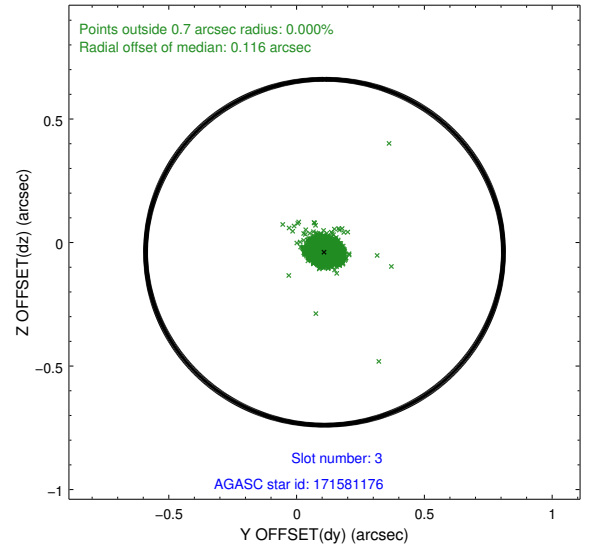
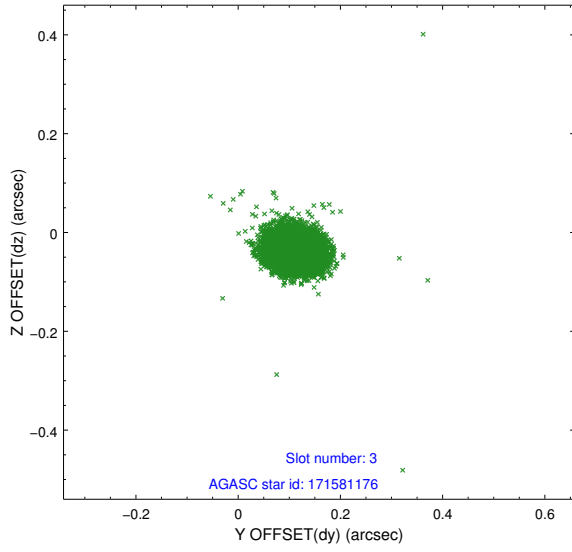


Slot Statistics

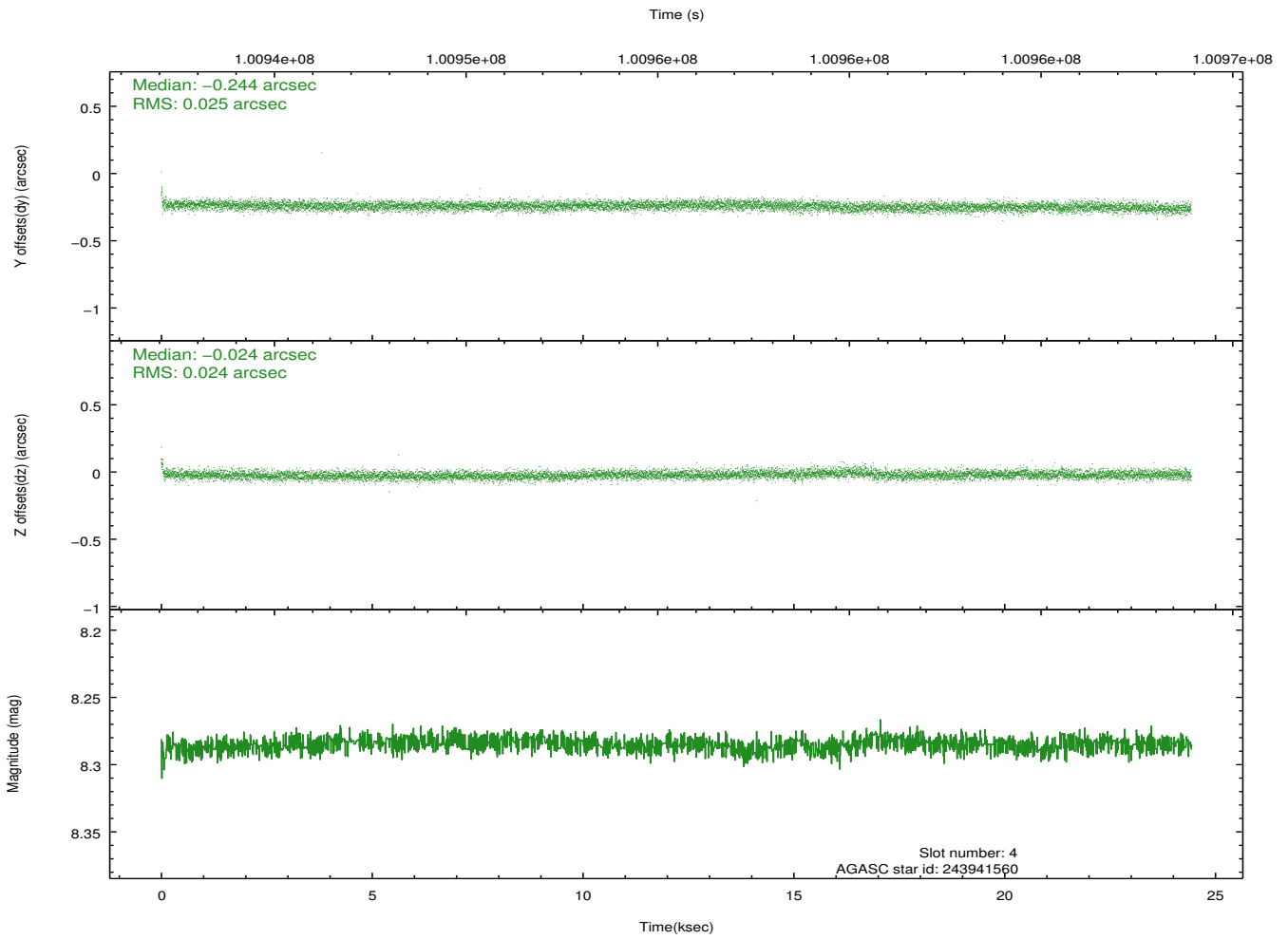
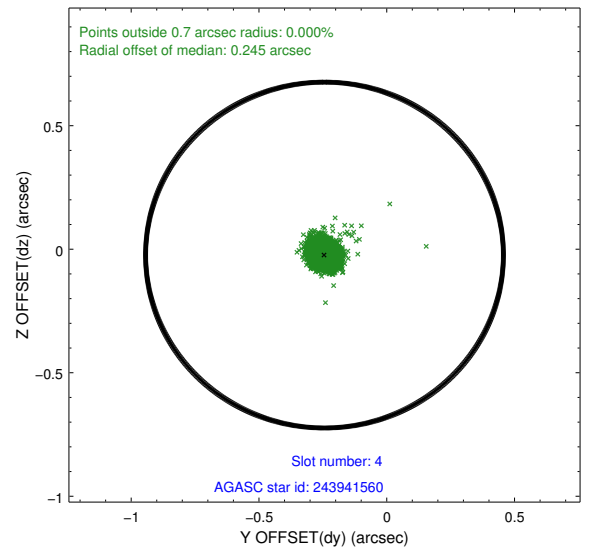
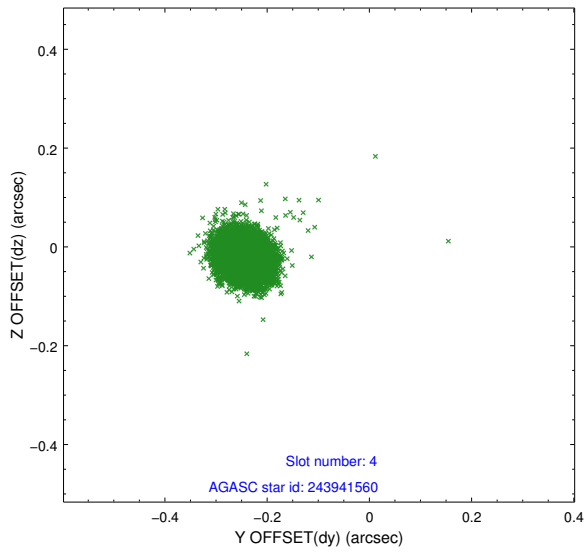
slot	status	id	mag	n_pts	med_dy	med_dz	dr1	dr2	ra	dec	mean_y	mean_z
0	FID	ACIS-S-2	7.10	5959	-0.067	-0.064	0.007	0.011	0.000000	0.000000	-754.22	-1881.36
1	FID	ACIS-S-4	7.18	5958	0.024	0.050	0.006	0.011	0.000000	0.000000	2159.09	27.07
2	FID	ACIS-S-5	7.23	5958	0.012	0.023	0.007	0.011	0.000000	0.000000	-1806.82	20.86
3	GUIDE	171581176	7.88	11917	0.109	-0.039	0.034	0.056	83.918863	21.403256	2315.43	919.88
4	GUIDE	243941560	8.28	11914	-0.244	-0.024	0.035	0.059	83.733264	22.568598	-1902.90	482.90
5	GUIDE	171585880	8.40	11918	0.077	0.001	0.041	0.066	83.676260	22.176319	-500.51	230.96
6	GUIDE	171586976	8.54	11918	-0.135	0.135	0.038	0.063	83.857953	22.438065	-1415.49	876.90
7	GUIDE	171597832	9.16	11911	0.194	-0.077	0.059	0.099	83.183230	21.366702	2335.51	-1549.61

2.4 Star Slots

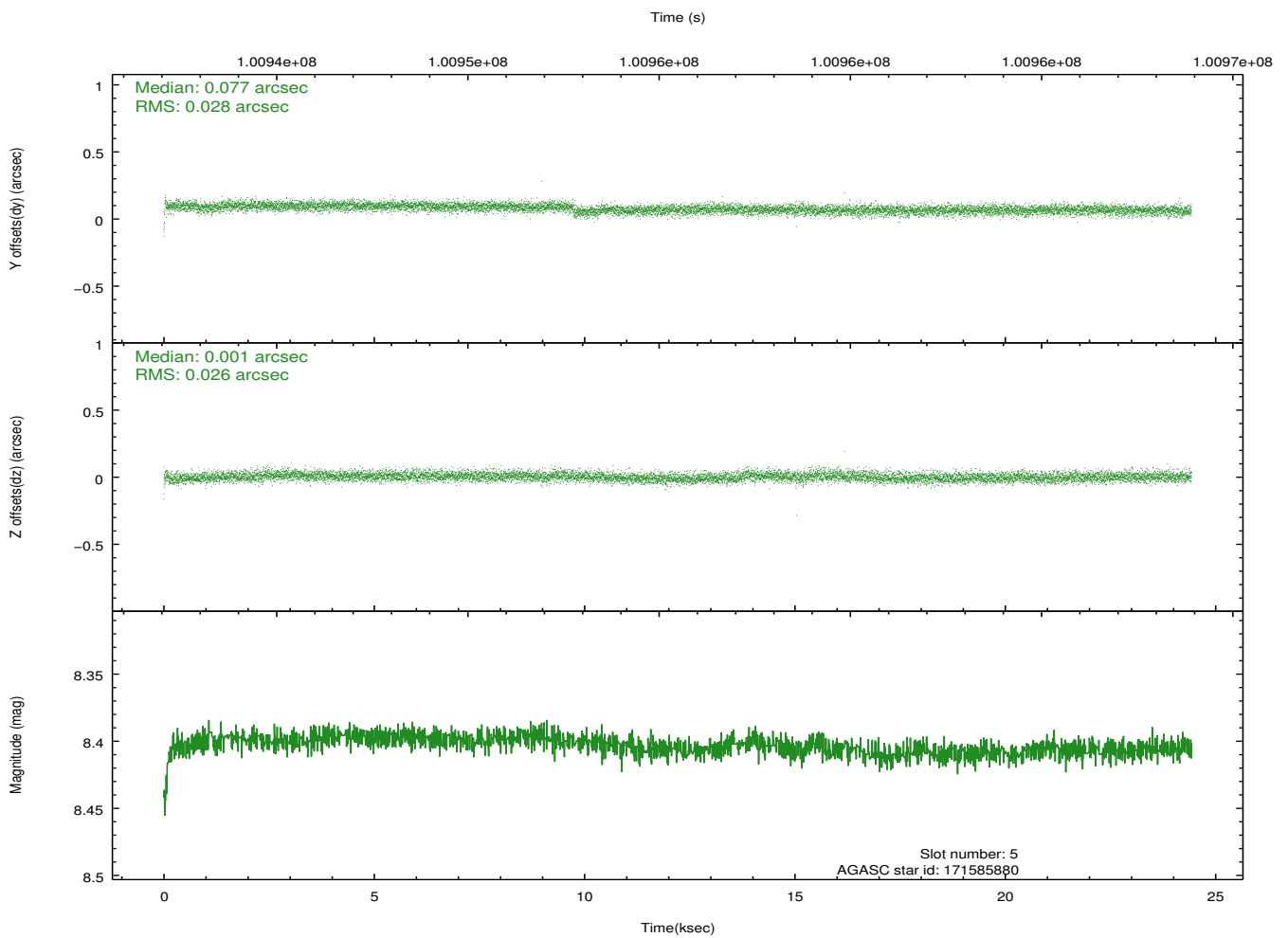
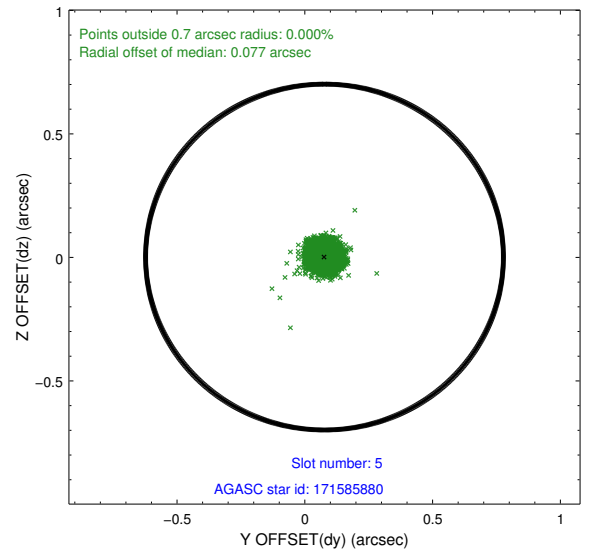
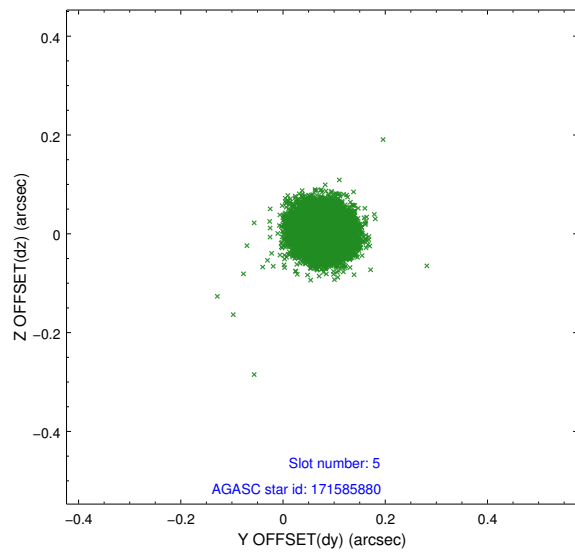
2.4.1 Slot 3



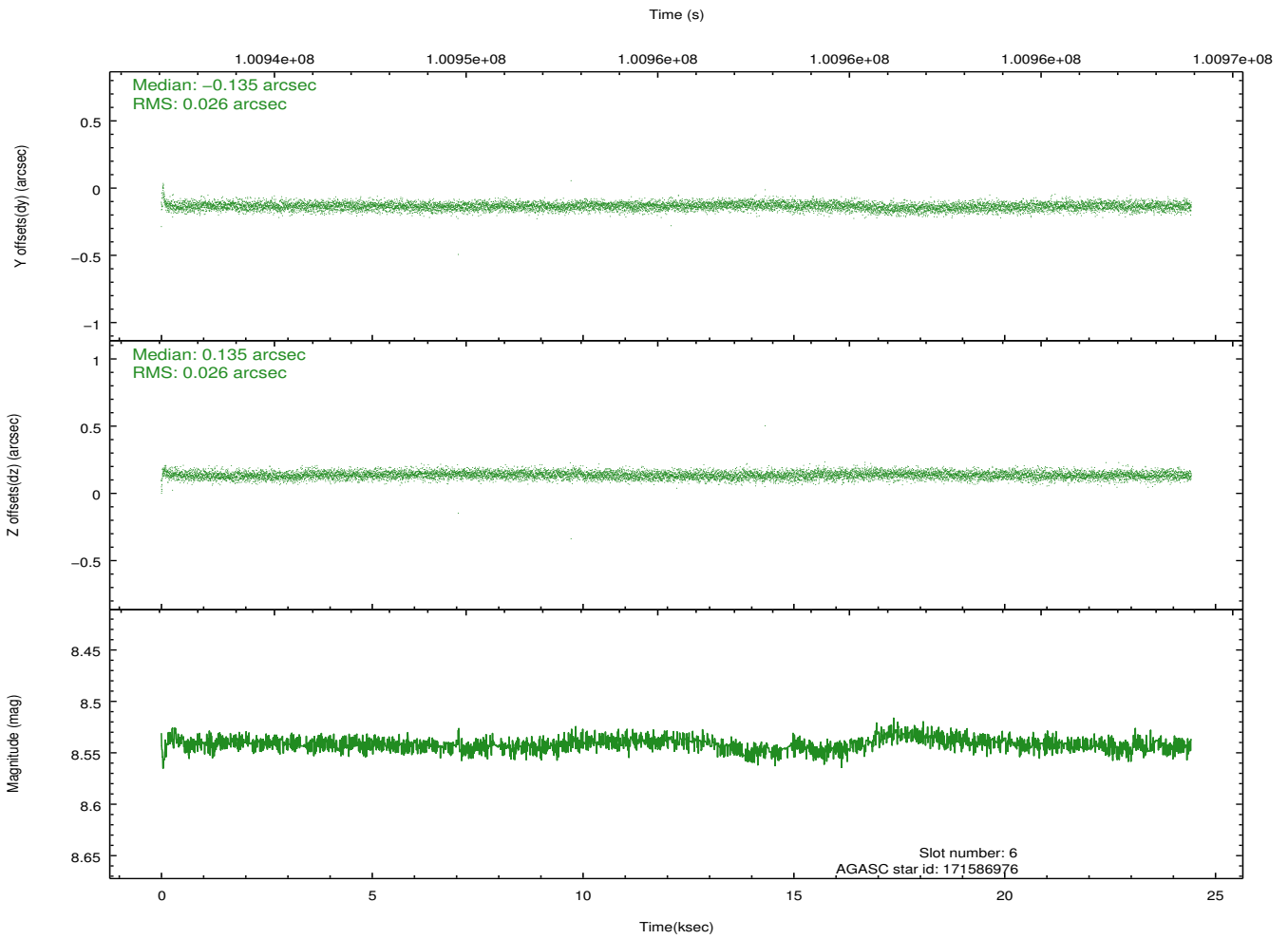
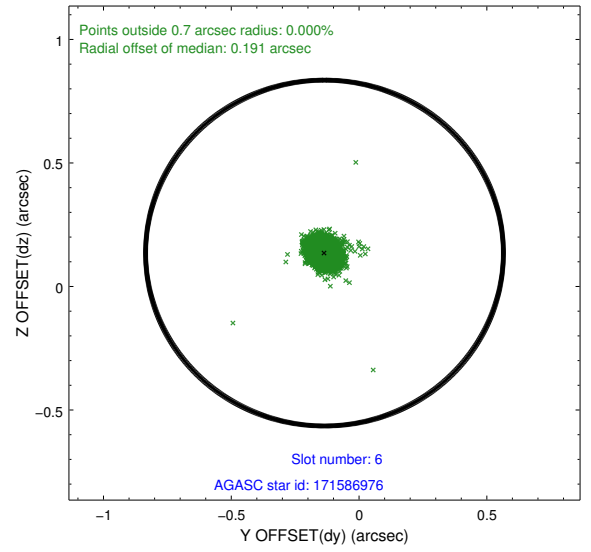
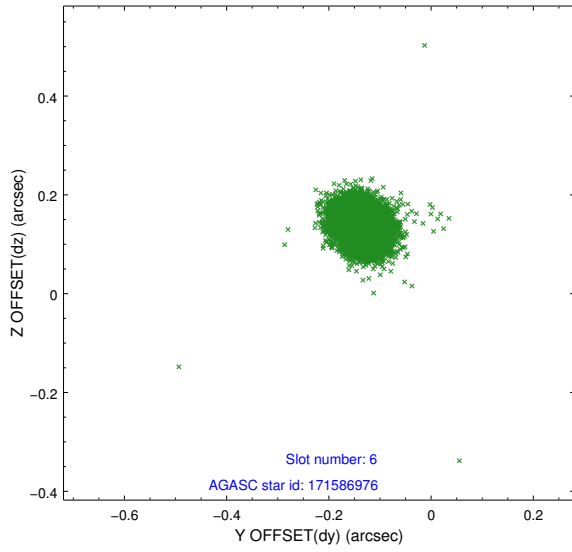
2.4.2 Slot 4



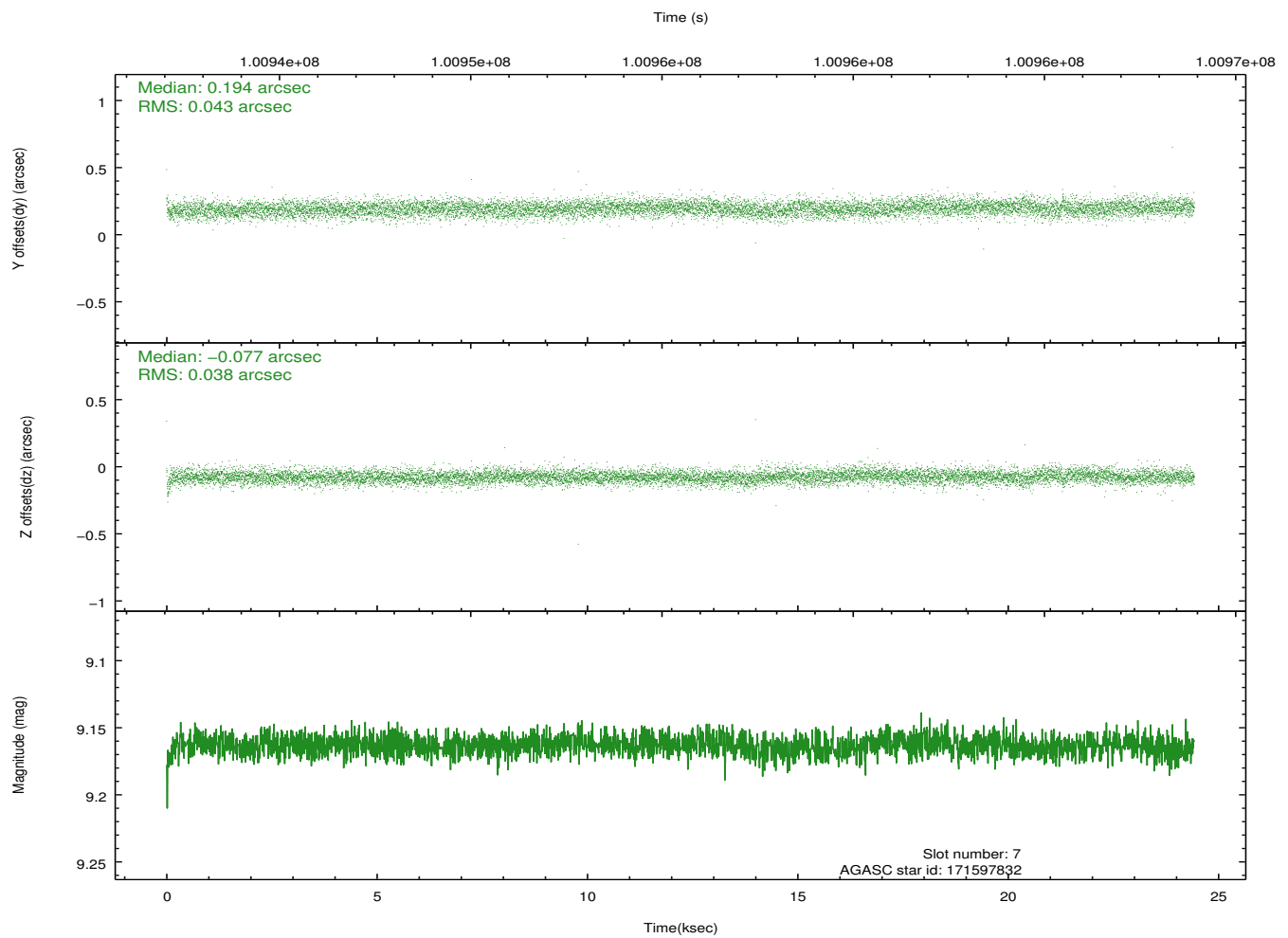
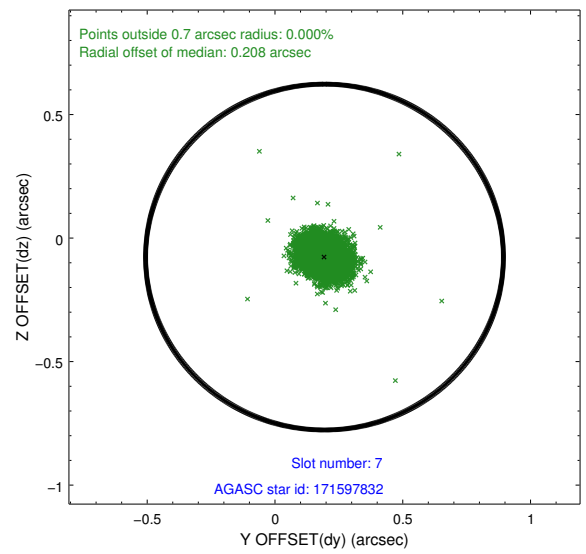
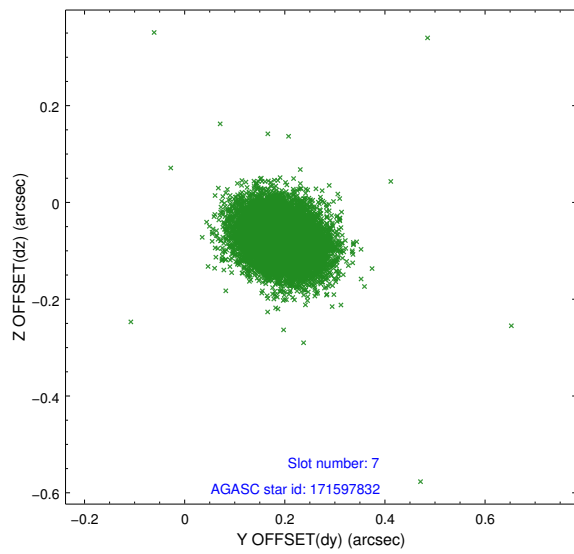
2.4.3 Slot 5



2.4.4 Slot 6

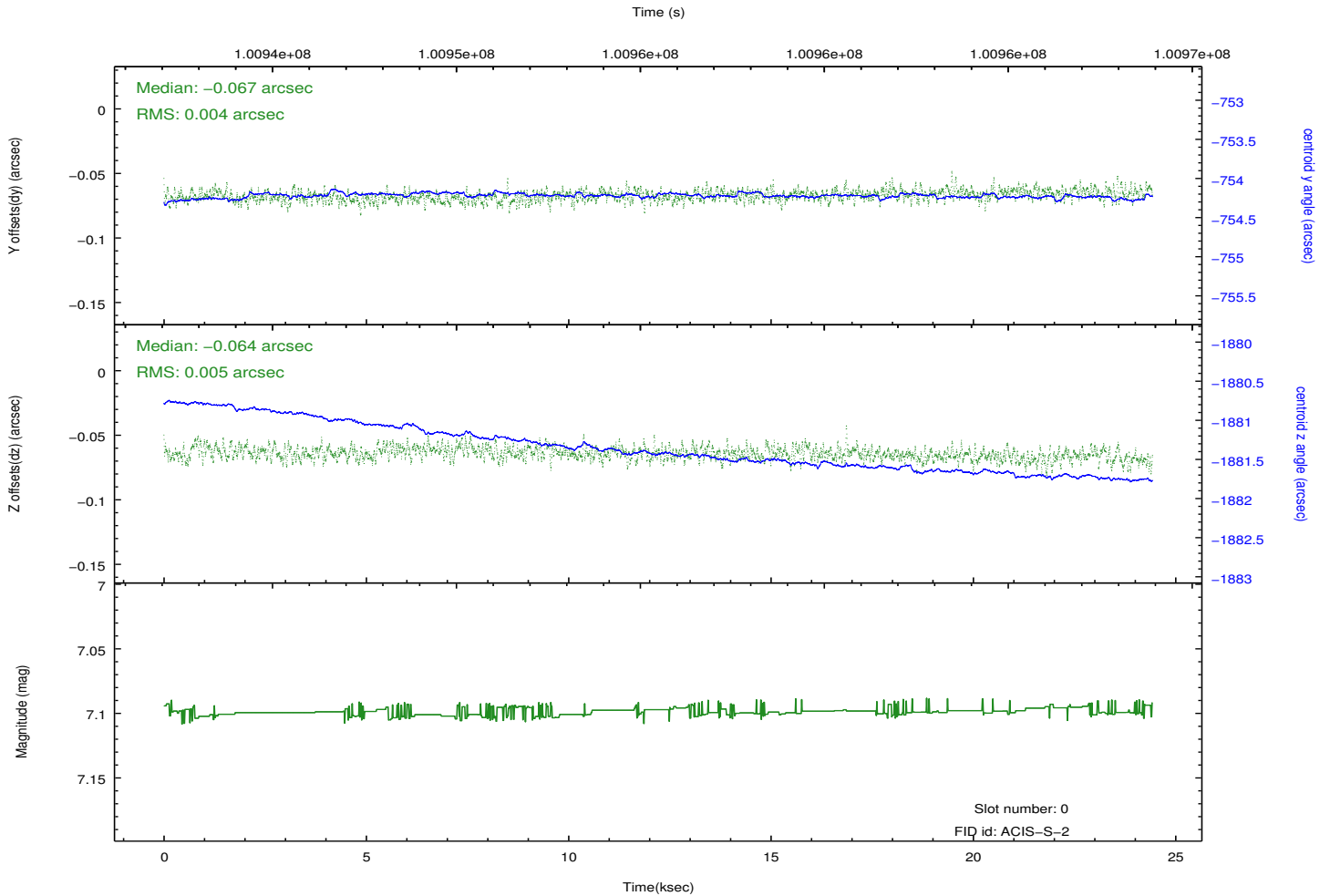
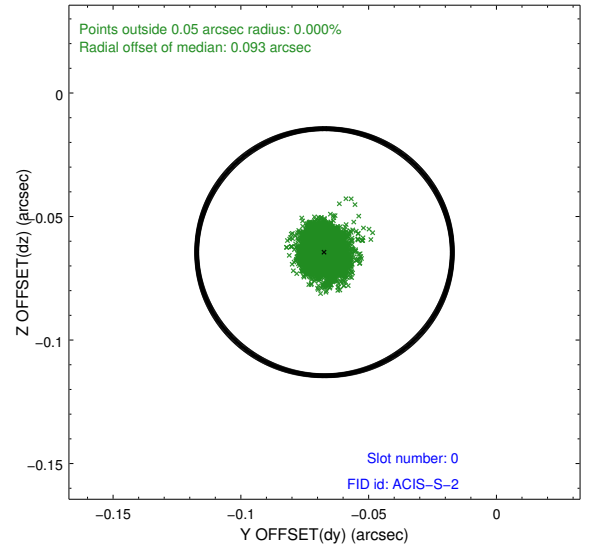
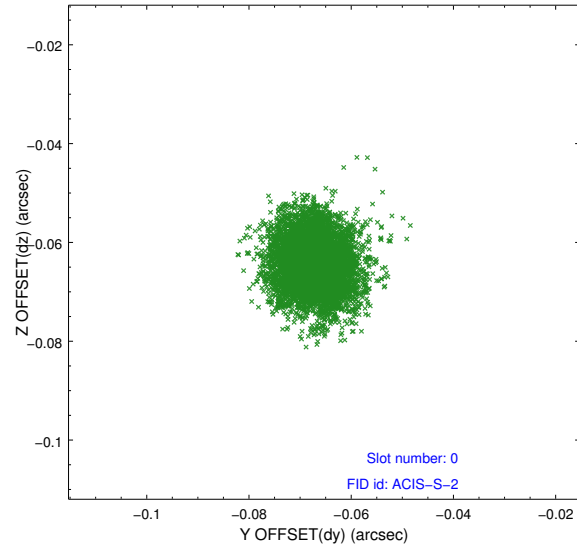


2.4.5 Slot 7

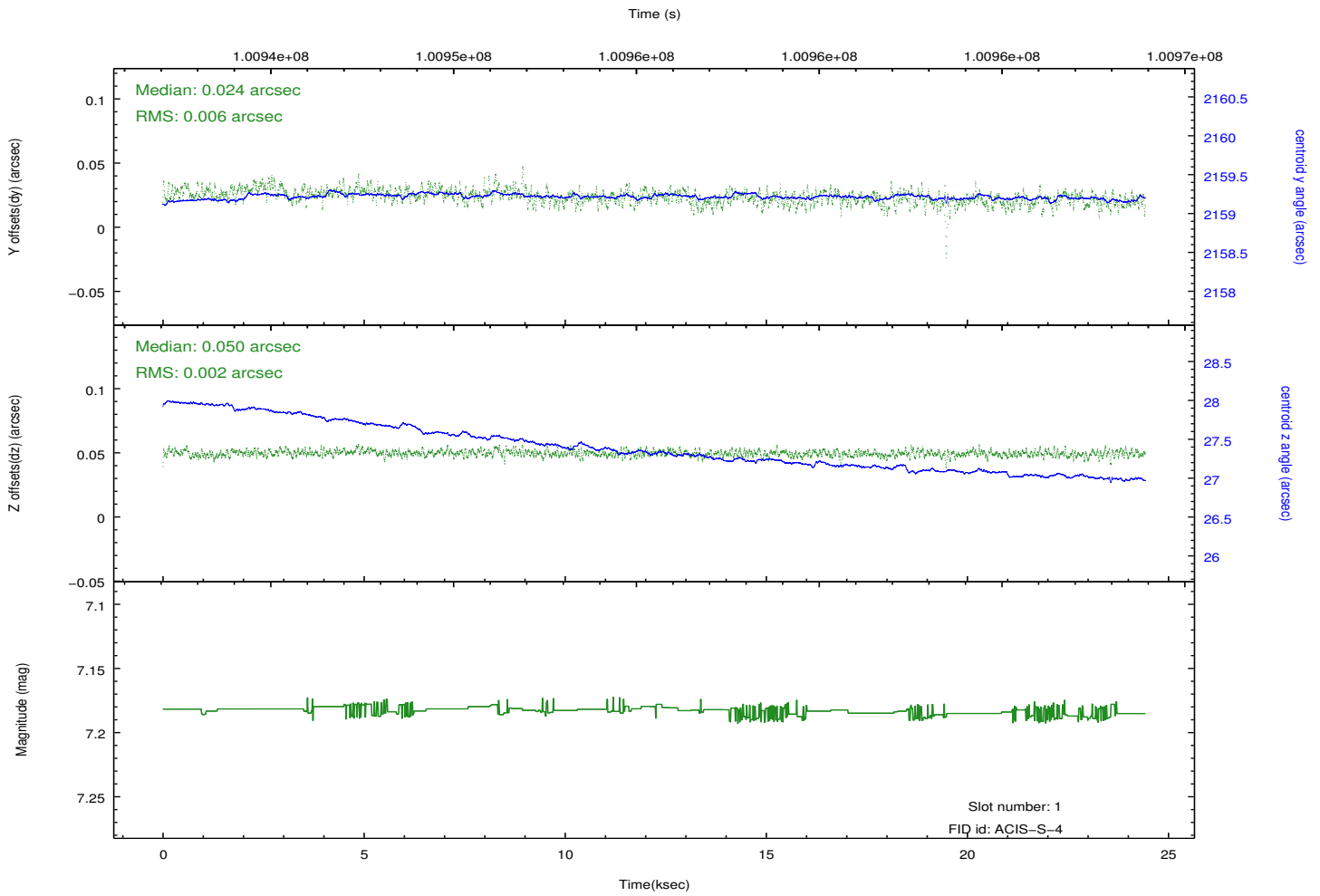
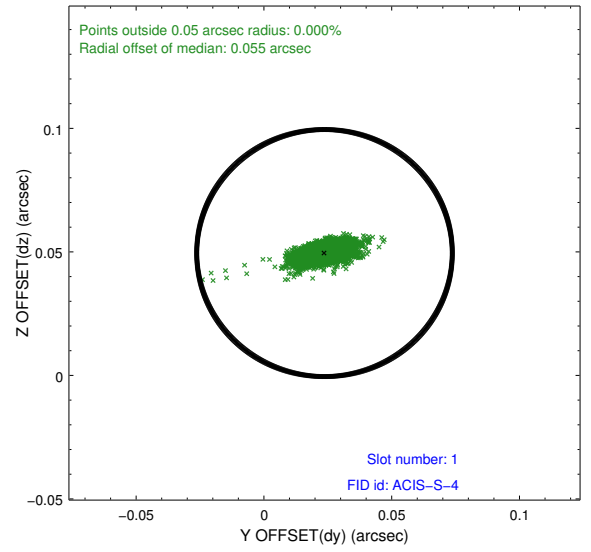
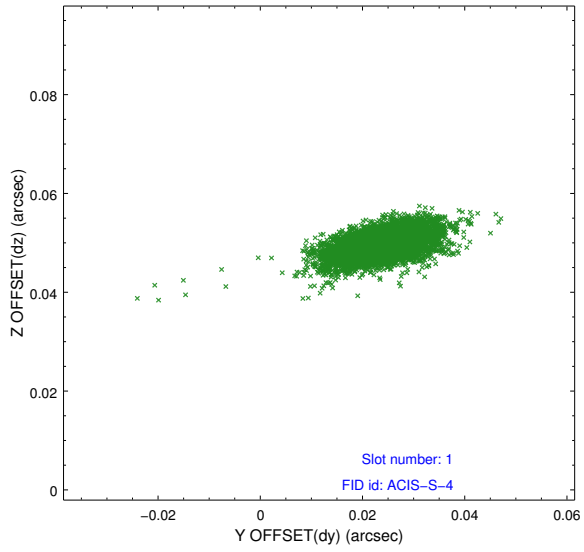


2.5 FID Slots

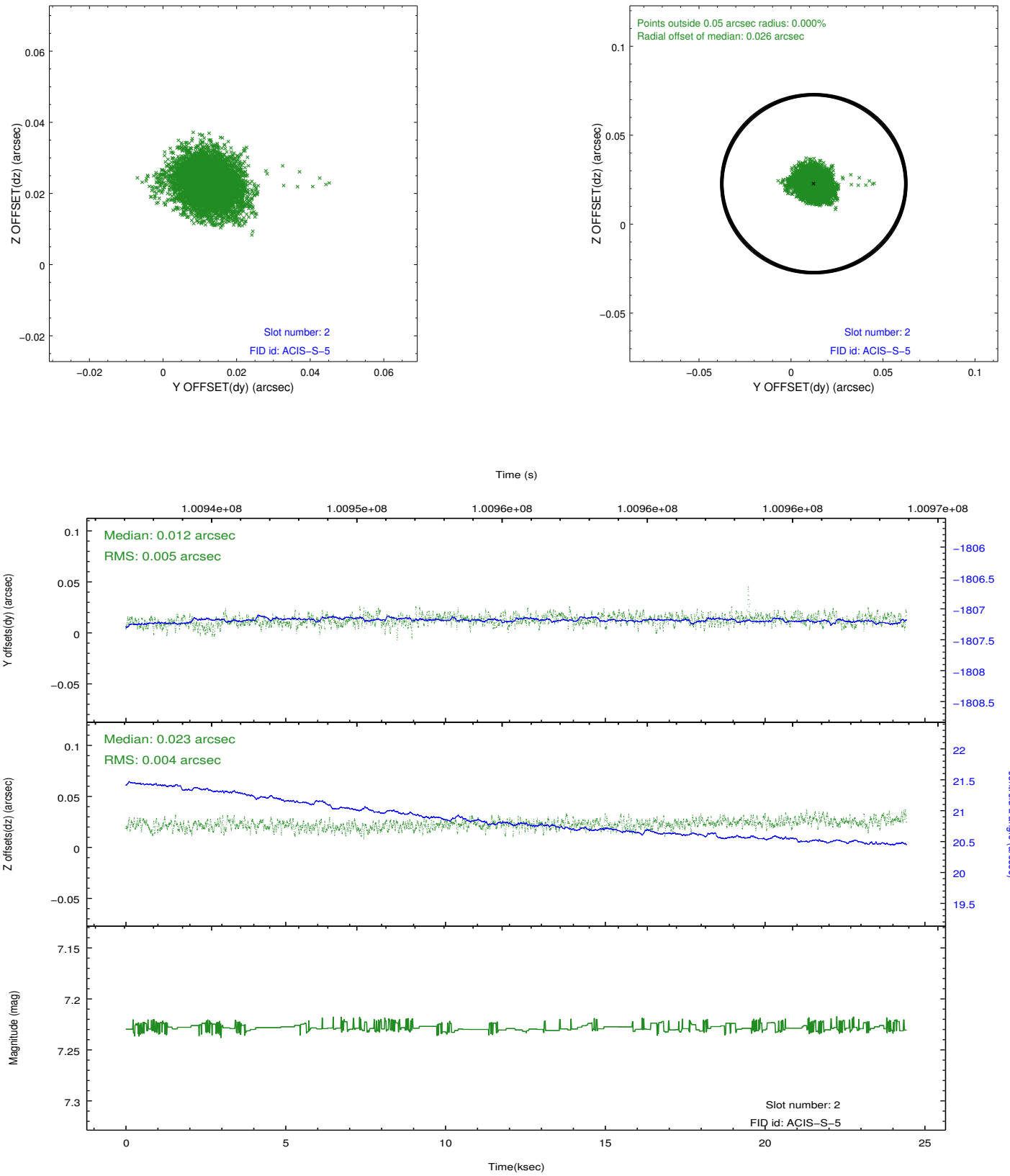
2.5.1 Slot 0



2.5.2 Slot 1



2.5.3 Slot 2



A Summary

A.1 Status

V&V Scientist	Jen Lauer
V&V Date (YYYY-MM-DD)	2012.09.18
V&V Edition	1
V&V Disposition and Status	OK
V&V Charge Time	22.726

A.2 Comments

Charge time for this ObsId remains at original value of 22.726 ks, although with the current processing the charge time would have been 14.702 ksec. The lower time value for this processing of the data is due to improved accounting of telemetry saturation in the software. There are many dropped exposures in this observation due to telemetry saturation. This observation is not dithered. The boundary between 2 nodes of the CCD chip is sharp and very apparent as a streak of lower flux 2-4 columns wide. The streak is only seen in Level 2 data, because the bad data are filtered at that point. Window constraint met.