

V&V Reference Report

L2 ASCDS Version : 8.4.5

Observation 2097 - L2 Version 4
Chandra X-Ray Center

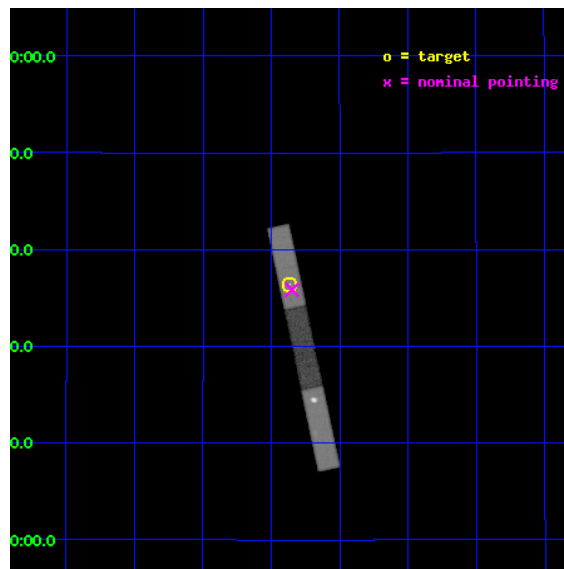
L2 Processing Date : Sep 22 2012

Contents

1	Front	2
2	OBI	3
2.1	OBI	3
2.1.1	Images	3
2.1.2	Bias	3
2.1.3	Parameters	4
2.1.4	Events	4
2.2	Compared Parameters	5
2.3	Aspect	6
2.4	Star Slots	9
2.4.1	Slot 3	9
2.4.2	Slot 4	10
2.4.3	Slot 5	11
2.4.4	Slot 6	12
2.4.5	Slot 7	13
2.5	FID Slots	14
2.5.1	Slot 0	14
2.5.2	Slot 1	15
2.5.3	Slot 2	16
A	Summary	17
A.1	Status	17
A.2	Comments	17

1 Front

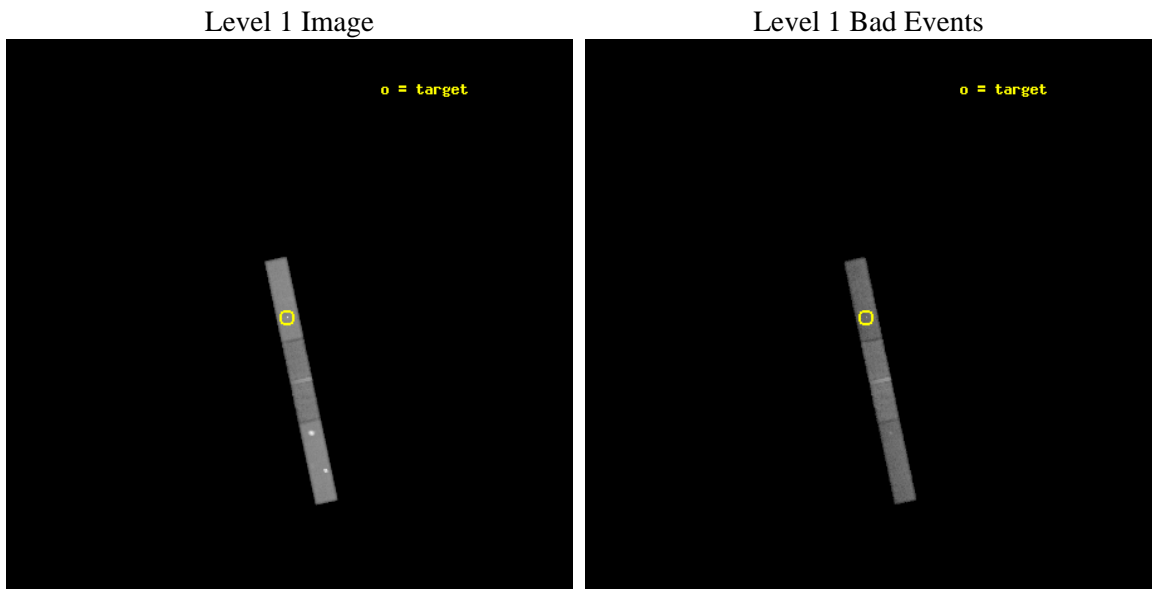
seq_num	700287	Sequence number
obs_id	2097	Observation id
title	X-RAY STRUCTURES IN AND AROUND POWERFUL RADIO SOURCES	Proposal tit
observer	Prof Diana Worrall	Principal investigator
object	3C 334	Source name
dtcycle	0	
cycle	P	events from which exps? Prim/Second/Both
ra_targ	245.09125	Observer's specified target RA [deg]
dec_targ	17.606417	Observer's specified target Dec [deg]
ra_nom	245.08737781673	Nominal RA [deg]
dec_nom	17.597394347337	Nominal Dec [deg]
roll_nom	257.98811008268	Nominal Roll [deg]
revision	4	Processing version of data
ontime	33948.900224835	Sum of GTIs [s]
livetime	32468.343749842	Livetime [s]
ontime5	33948.900224835	Sum of GTIs [s]
ontime6	33948.900224835	Sum of GTIs [s]
ontime7	33948.900224835	Sum of GTIs [s]
l2events	205449	Number of level 2 events



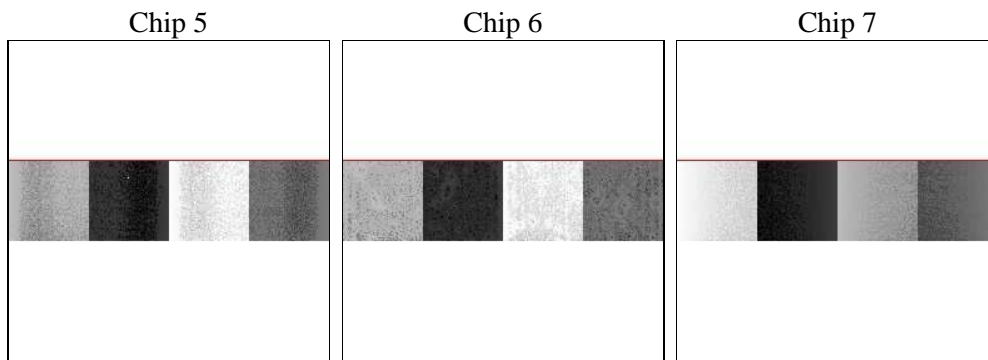
2 OBI

2.1 OBI

2.1.1 Images



2.1.2 Bias



2.1.3 Parameters

obi_num	2	Obi number	sched_exp_time	33755.815000	[s] Scheduled observation exposure time
ascdsver	8.4.5	Processing system revision	ontime	33948.900224835	Sum of GTIs [s]
caldbver	4.5.1.1	 	ontime5	33948.900224835	Sum of GTIs [s]
date	2012-09-22T08:39:54	Date and time of file creation	ontime6	33948.900224835	Sum of GTIs [s]
revision	4	Processing version of data	ontime7	33948.900224835	Sum of GTIs [s]
			l1events	384818	Number of level 1 events

2.1.4 Events

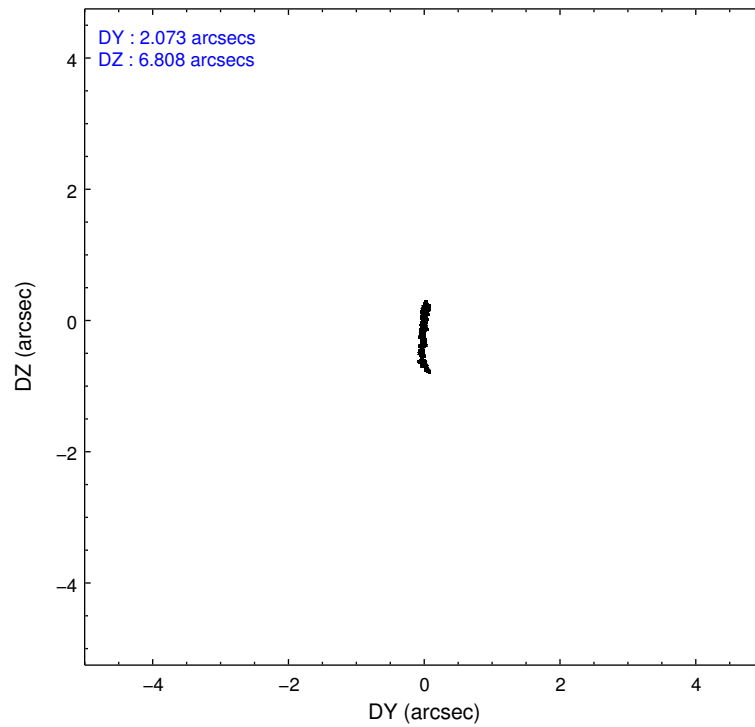
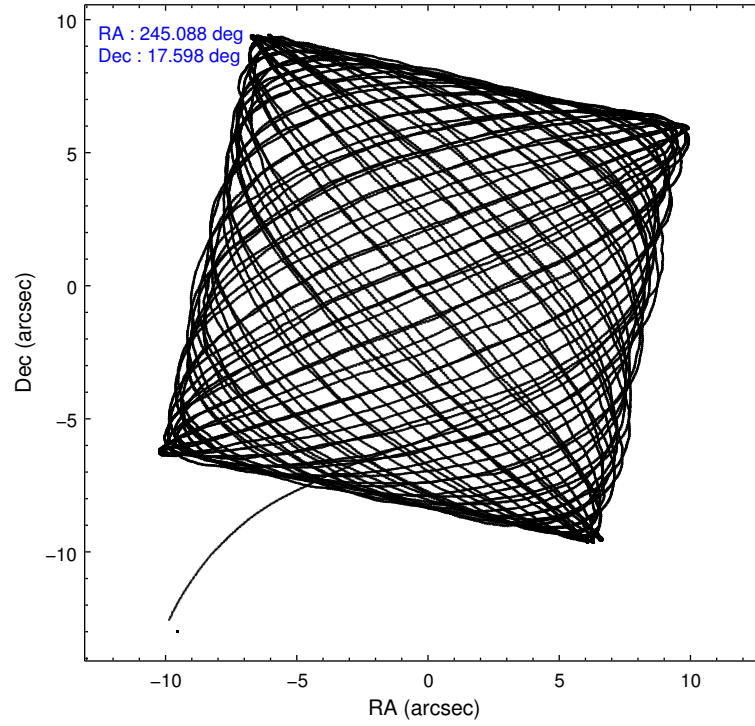
	ccd 5	ccd 6	ccd 7
level 1 events	169925	81470	133423
rejected events	48313	66898	44875
rejected %	28%	82%	33%

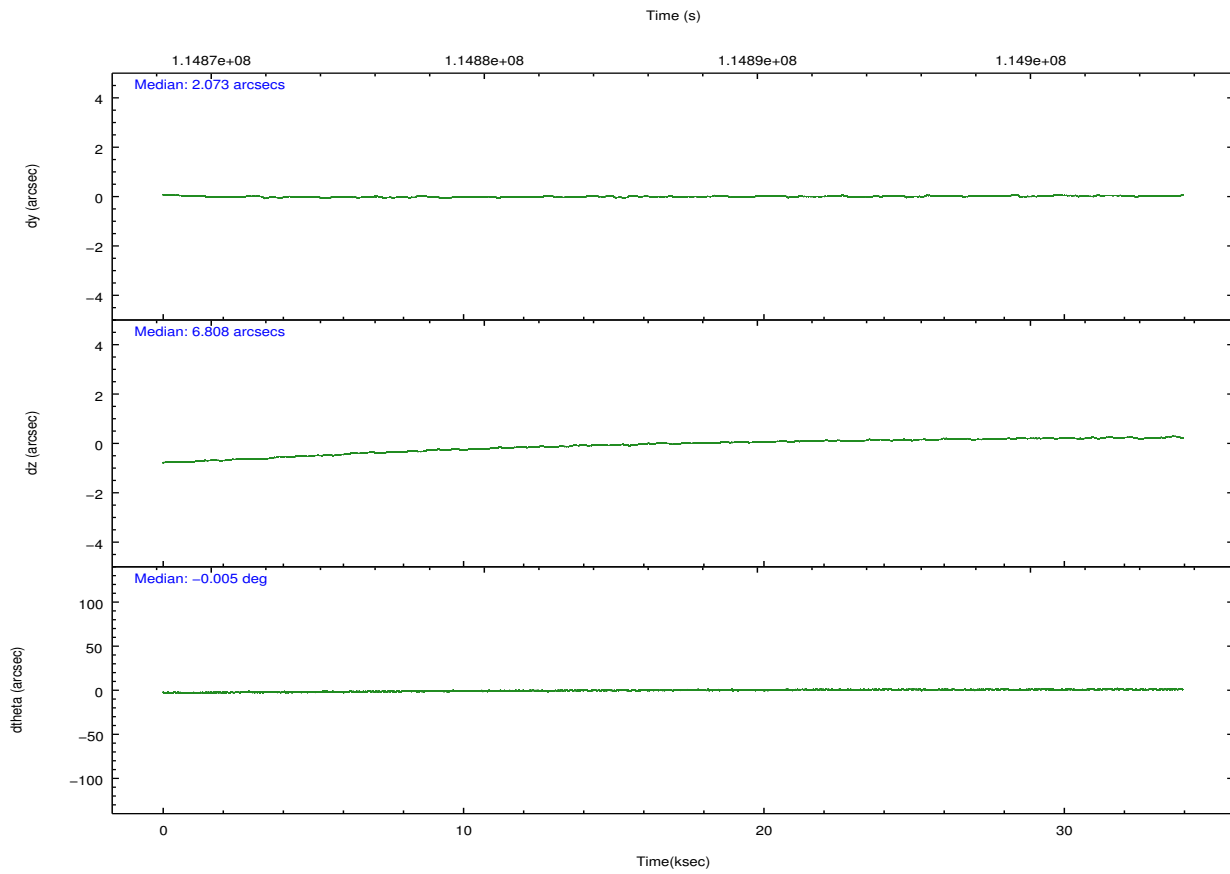
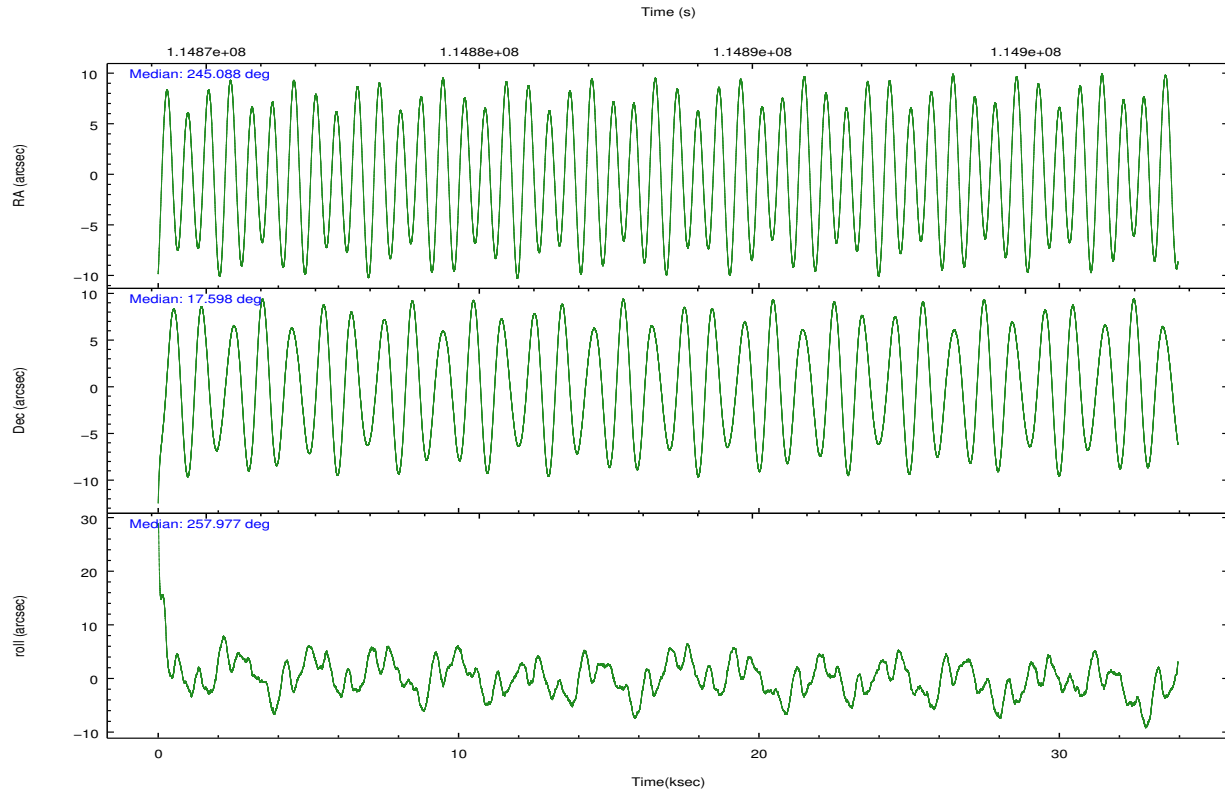
	ccd 5	ccd 6	ccd 7
grade 0 events	39162	8423	12376
	23%	10%	9%
grade 1 events	137	23	121
	0%	0%	0%
grade 2 events	29388	2240	17605
	17%	2%	13%
grade 3 events	7888	1405	8389
	4%	1%	6%
grade 4 events	7964	1304	8180
	4%	1%	6%
grade 5 events	7411	2348	7437
	4%	2%	5%
grade 6 events	38755	1561	43184
	22%	1%	32%
grade 7 events	39220	64166	36131
	23%	78%	27%

2.2 Compared Parameters

Parameter	Planned	Actual	Parameter	Planned	Actual
Instrument	ACIS	ACIS	Obspar format version number	7	7
Detector	ACIS-567	ACIS-567	Obspar file type	PREDICTED	ACTUAL
Grating	NONE	NONE	Obspar update status	NONE	UPDATED
Data mode	FAINT	FAINT	Number of optional ACIS chips dropped	0	0
Observation mode	POINTING	POINTING	On-chip summing requested	N	N
[deg] Pointing RA	245.078239	245.0873778167324	Subarray requested	CUSTOM	1/4
[deg] Pointing Dec	17.623244	17.59739434733675	Subarray start row	385	385
[deg] Pointing Roll	257.834244	257.988110082679	Subarray row count	256	256
[mm] SIM focus pos	-0.684267	-0.6828225247311905	Alternating exposures requested	N	N
[mm] SIM defocus	0	0.001444936568705701	[s] Primary exposure time	0.000000	0.9
[mm] SIM translation stage pos	-190.132523	-190.1400660498719			
[mm] SIM translation stage offset	0	0.00754346686406393			
[s] Observation start time (MET)	114870129.184000	114869161.32225			
Observation start date	2001-08-22T12:21:05	2001-08-22T12:06:01			
[s] Observation end time (MET)	114903885.184000	114904199.92363			
Observation end date	2001-08-22T21:43:41	2001-08-22T21:49:59			
Read mode	TIMED	TIMED			

2.3 Aspect



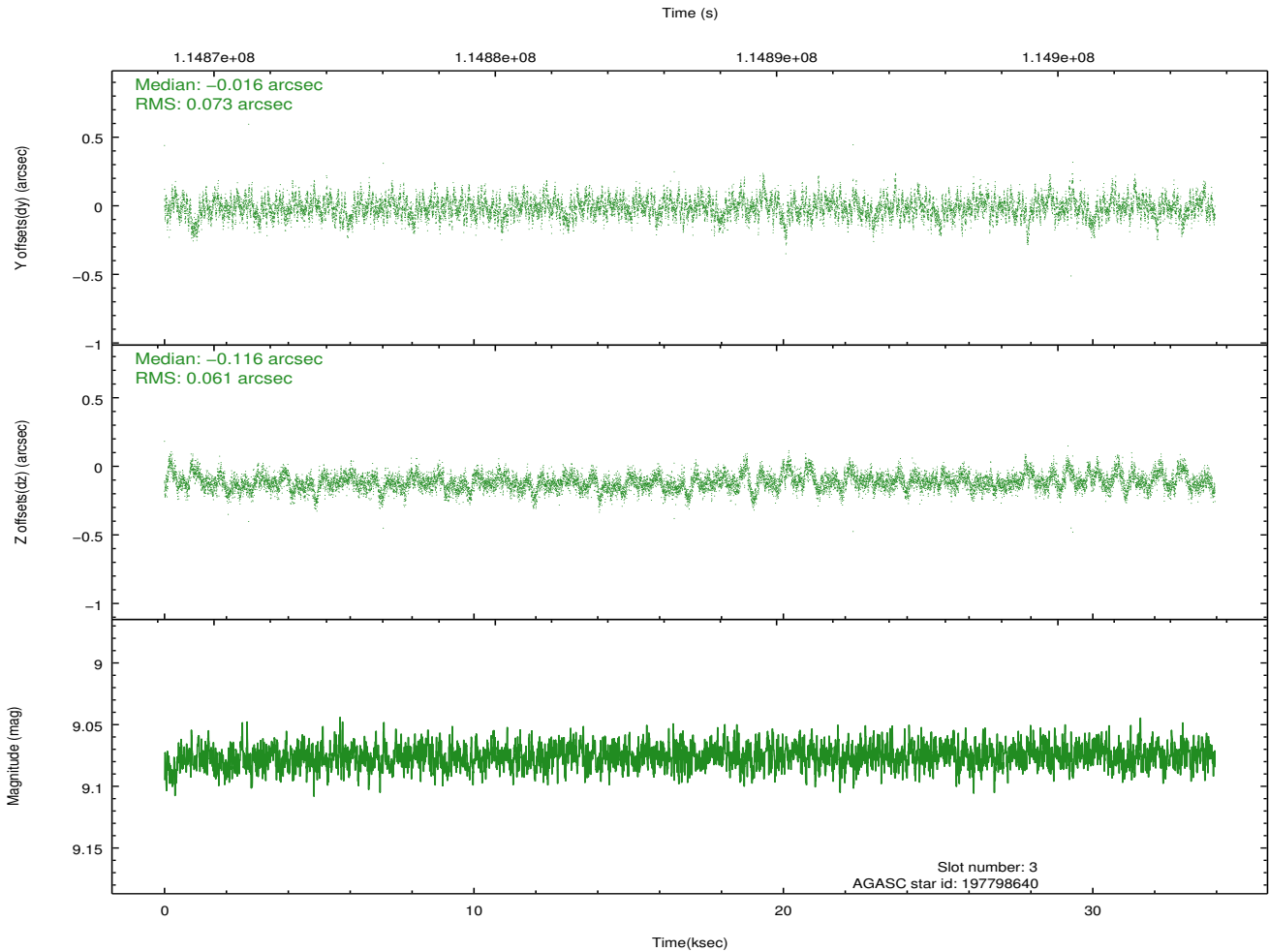
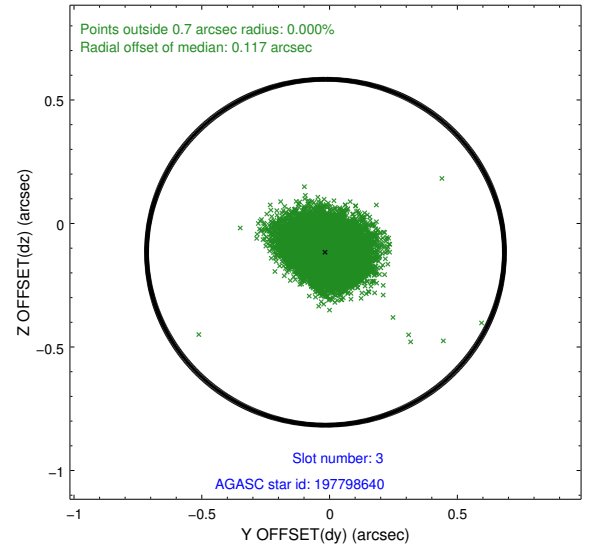
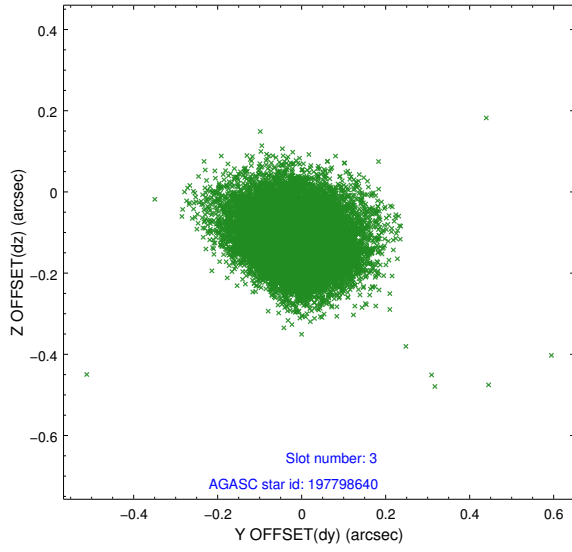


Slot Statistics

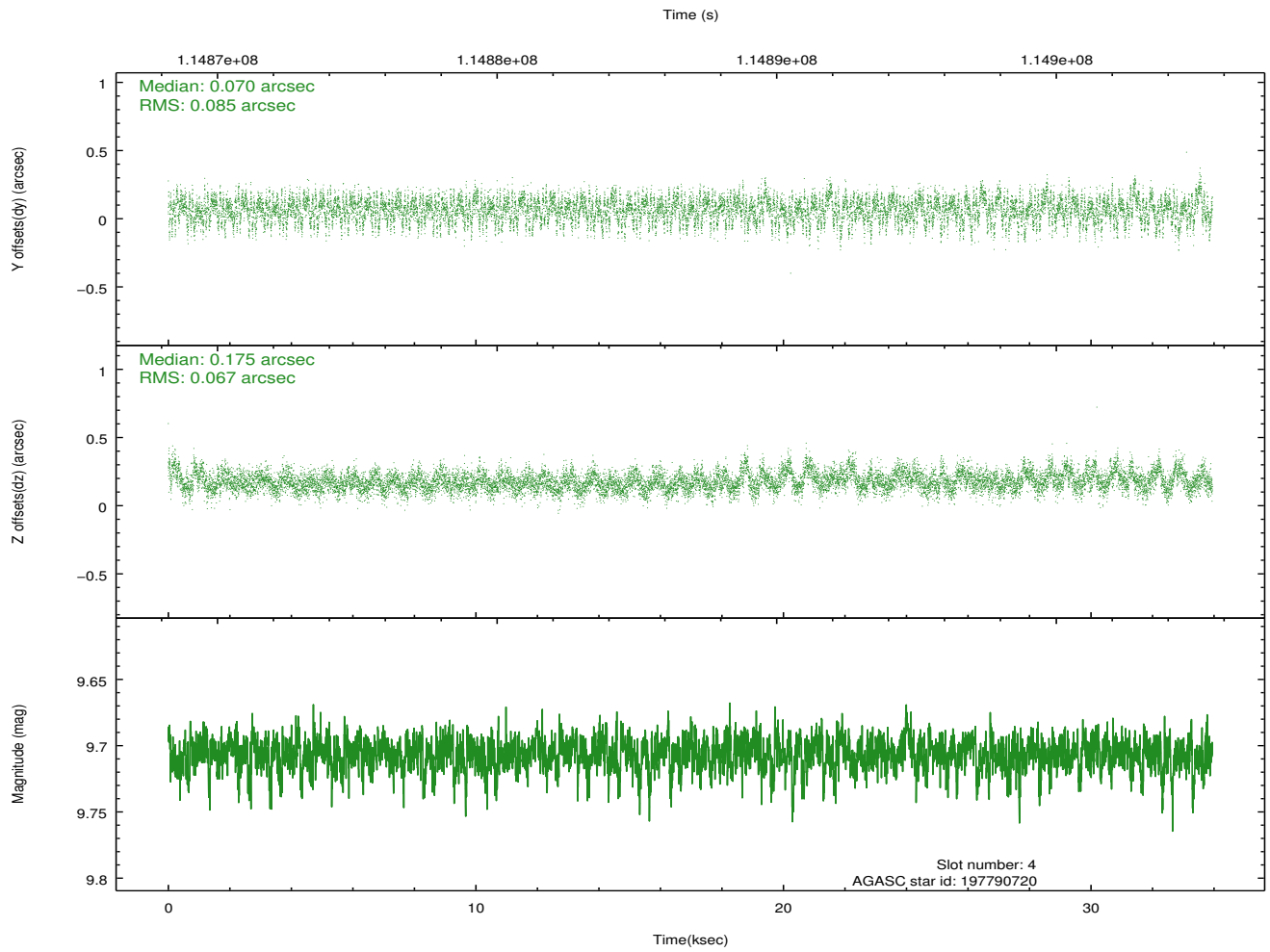
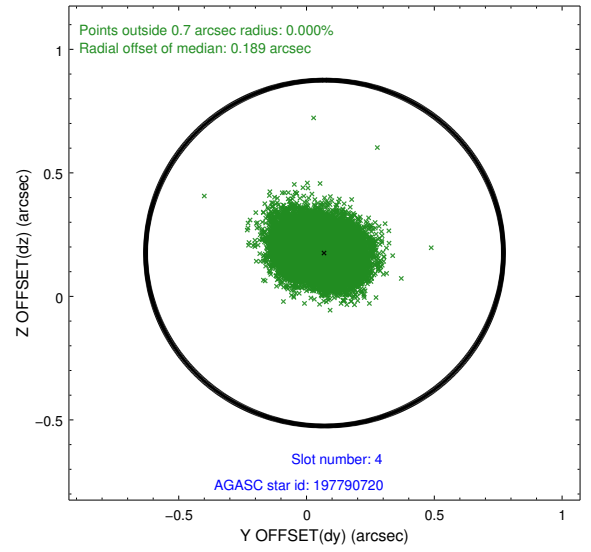
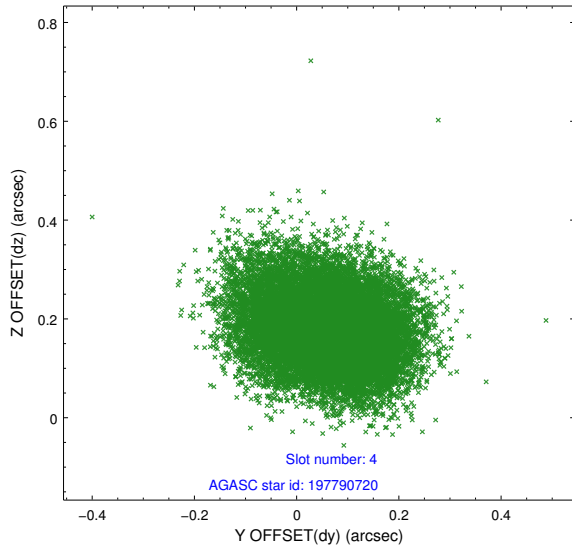
slot	status	id	mag	n_pts	med_dy	med_dz	dr1	dr2	ra	dec	mean_y	mean_z
0	FID	ACIS-S-2	7.11	8281	-0.030	-0.000	0.010	0.015	0.000000	0.000000	-754.70	-1727.87
1	FID	ACIS-S-4	7.20	8281	-0.038	0.014	0.007	0.013	0.000000	0.000000	2158.53	180.61
2	FID	ACIS-S-5	7.24	8280	0.037	-0.005	0.008	0.014	0.000000	0.000000	-1807.44	174.27
3	GUIDE	197798640	9.08	16557	-0.016	-0.116	0.100	0.167	244.352623	17.195883	2026.63	-2116.19
4	GUIDE	197790720	9.71	16523	0.070	0.175	0.115	0.189	245.545030	17.175331	1236.77	1908.91
5	GUIDE	197791872	10.59	16543	0.026	-0.067	0.162	0.282	244.785240	17.461396	782.07	-860.98
6	GUIDE	197789880	10.21	16536	0.029	-0.049	0.241	0.563	244.695583	17.328201	1315.43	-1062.03
7	GUIDE	197790448	8.50	16557	-0.114	0.091	0.118	0.191	245.720580	17.403267	305.92	2322.91

2.4 Star Slots

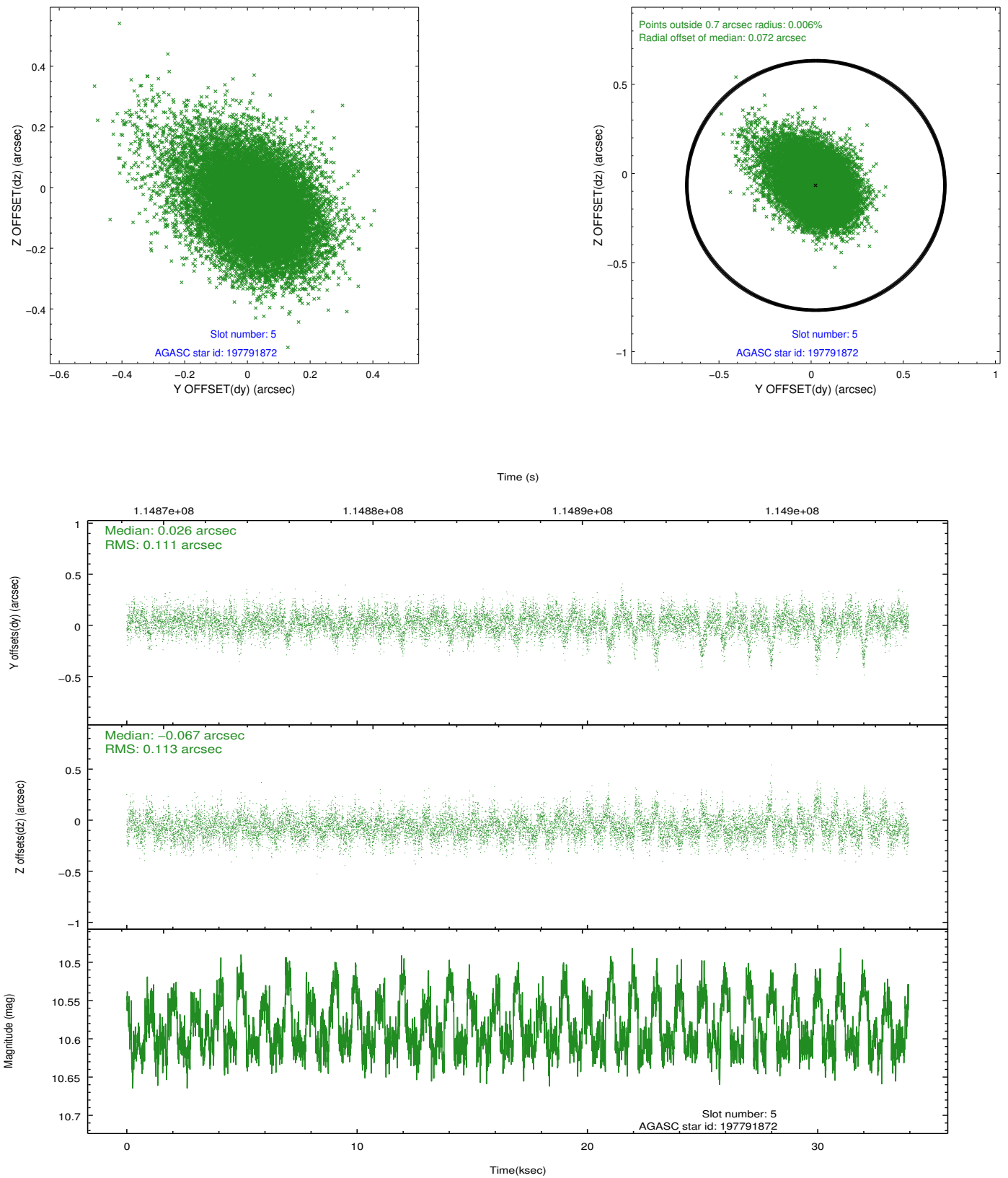
2.4.1 Slot 3



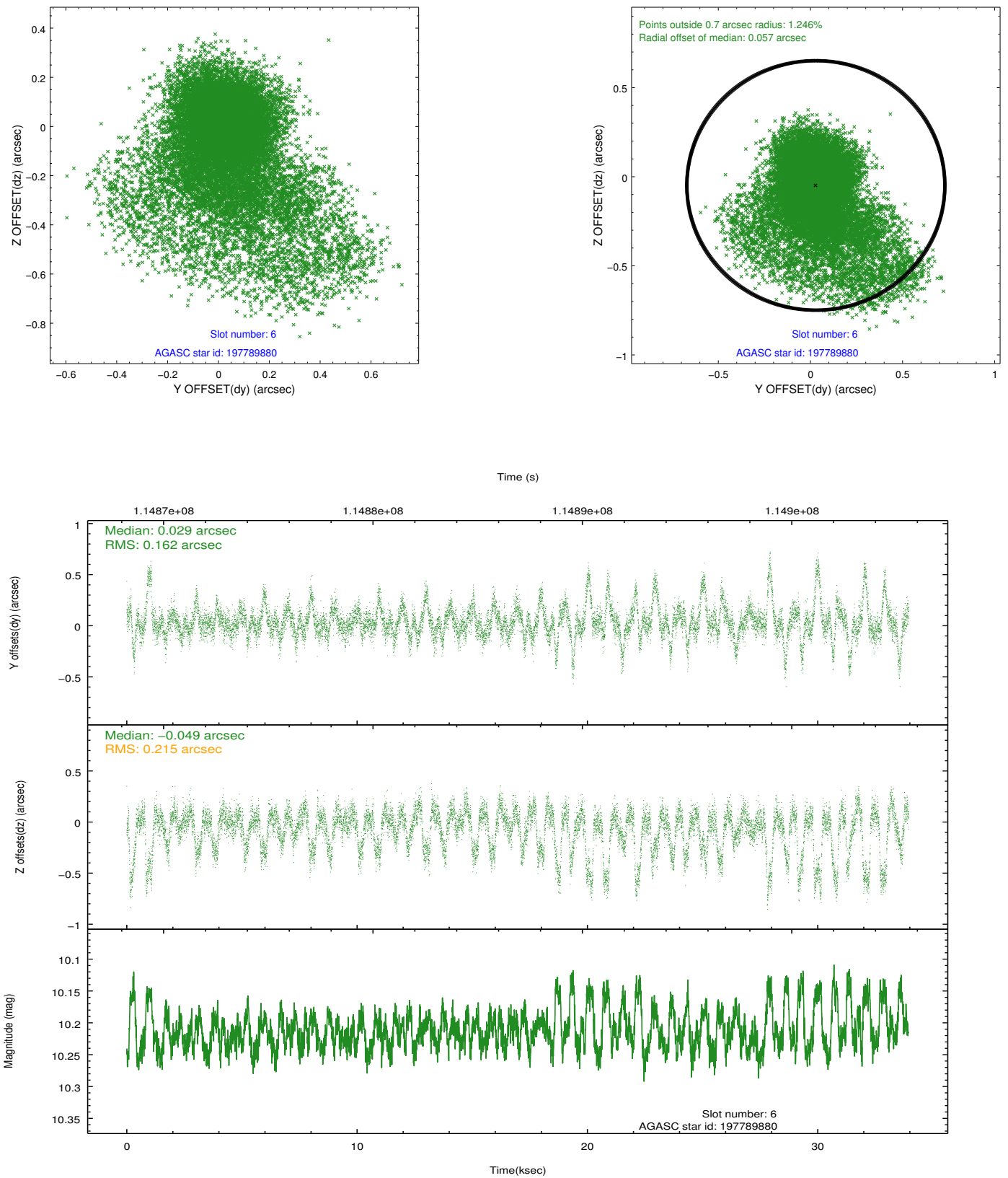
2.4.2 Slot 4



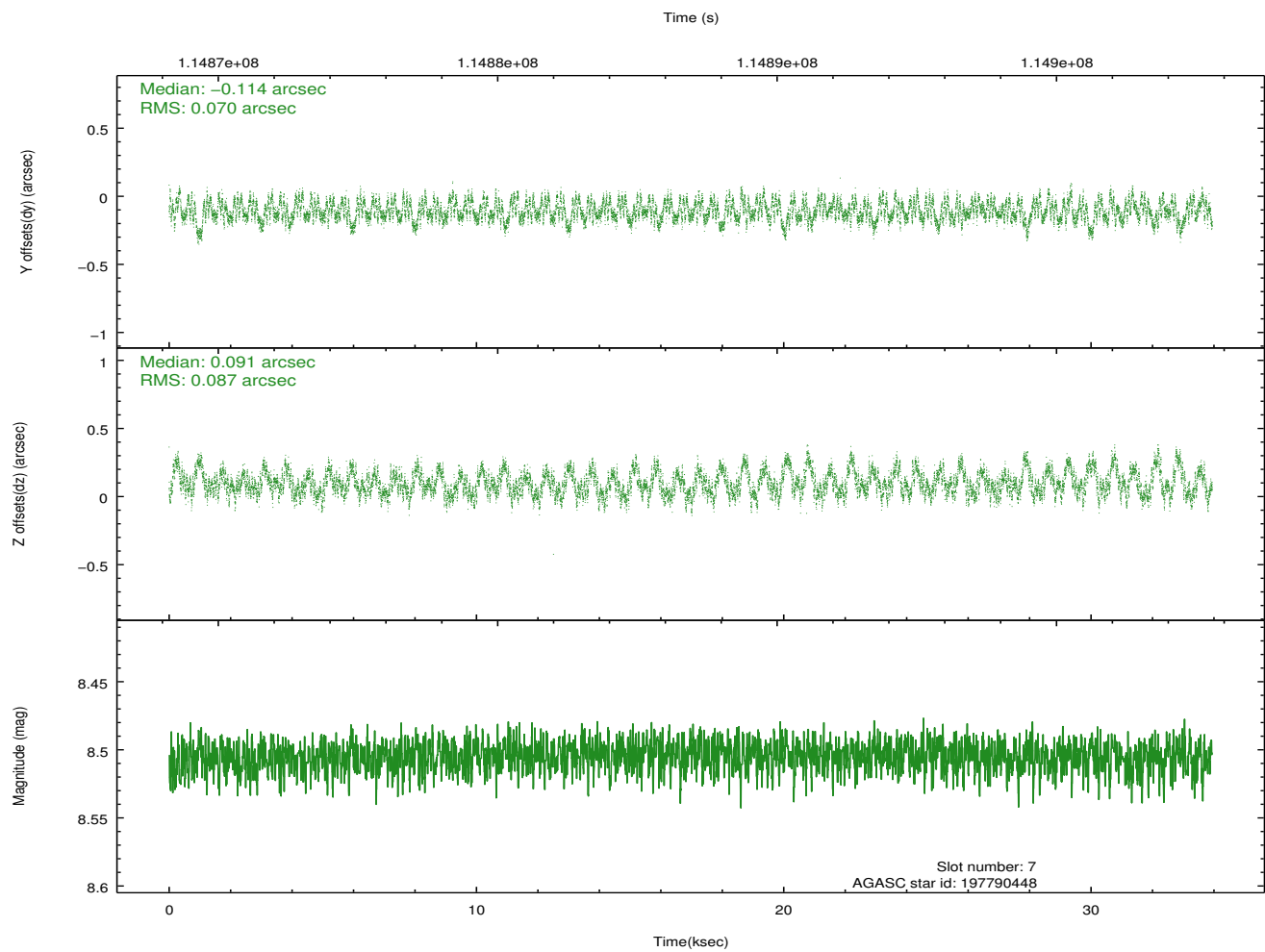
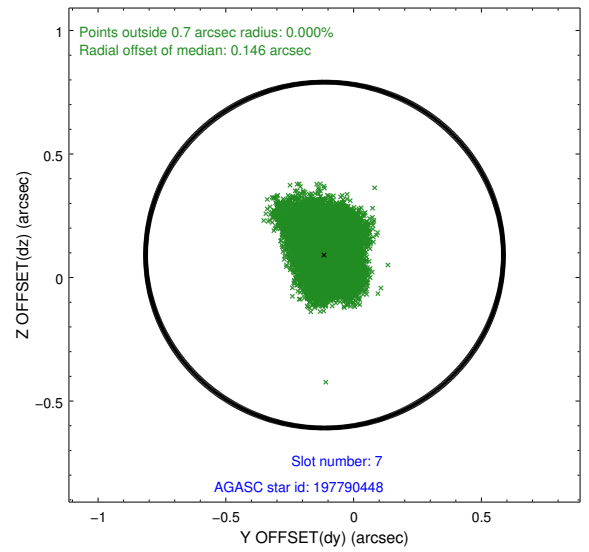
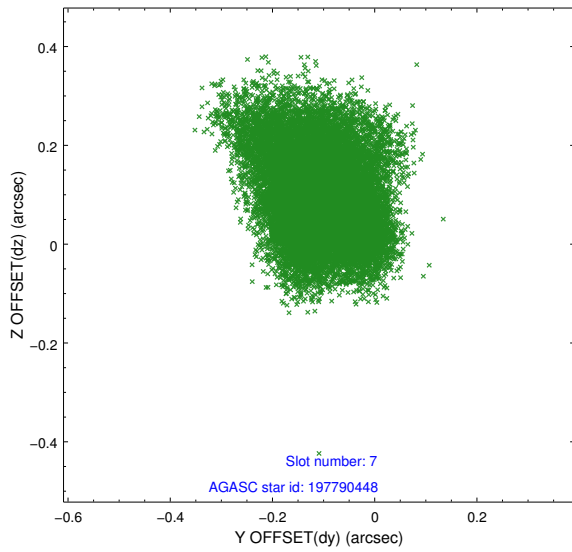
2.4.3 Slot 5



2.4.4 Slot 6

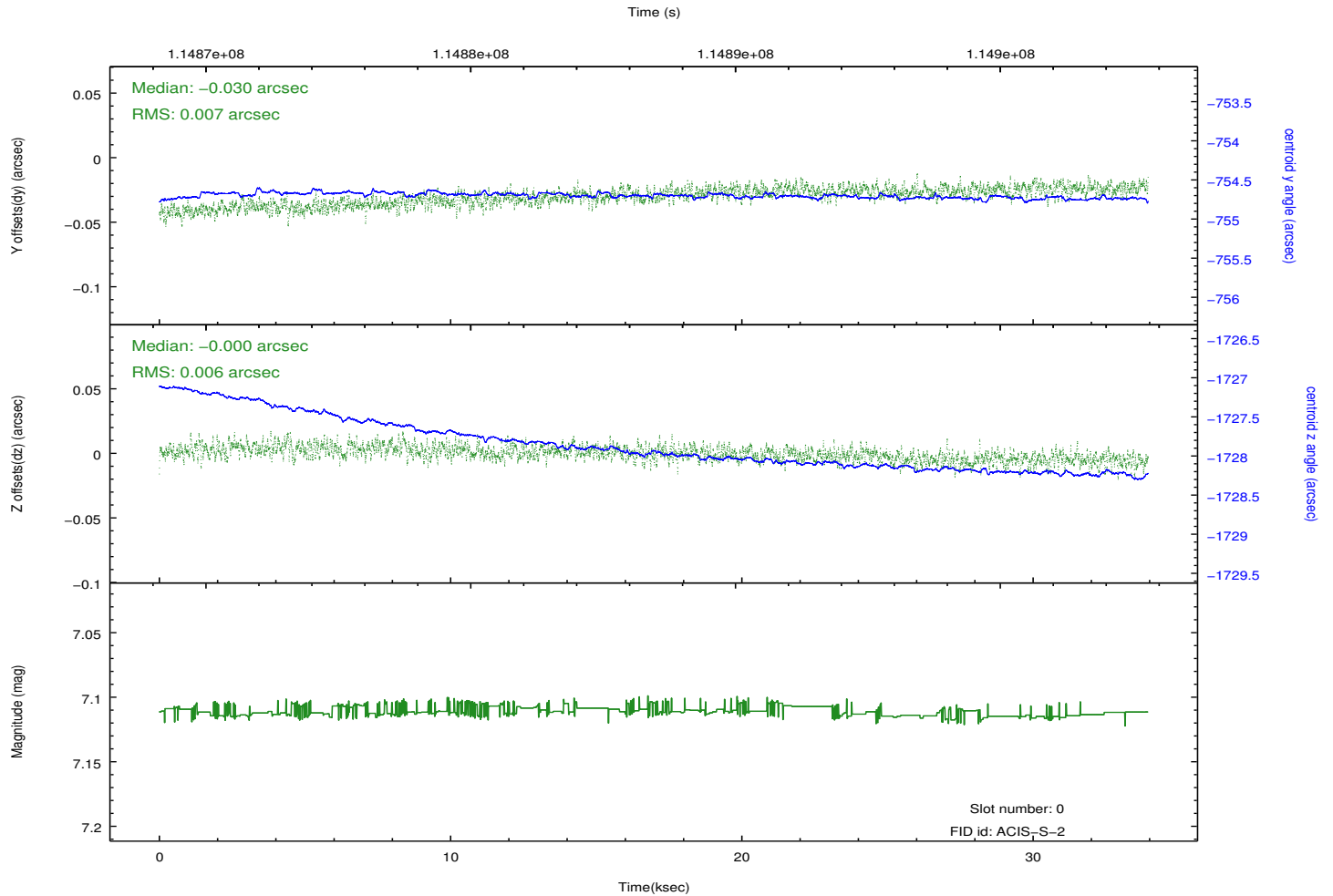
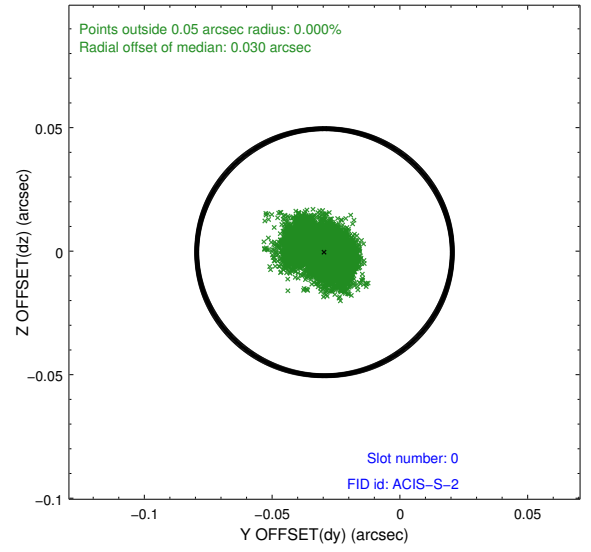
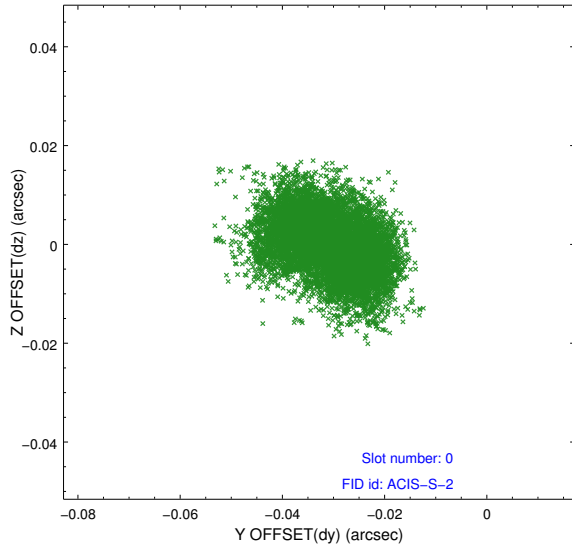


2.4.5 Slot 7

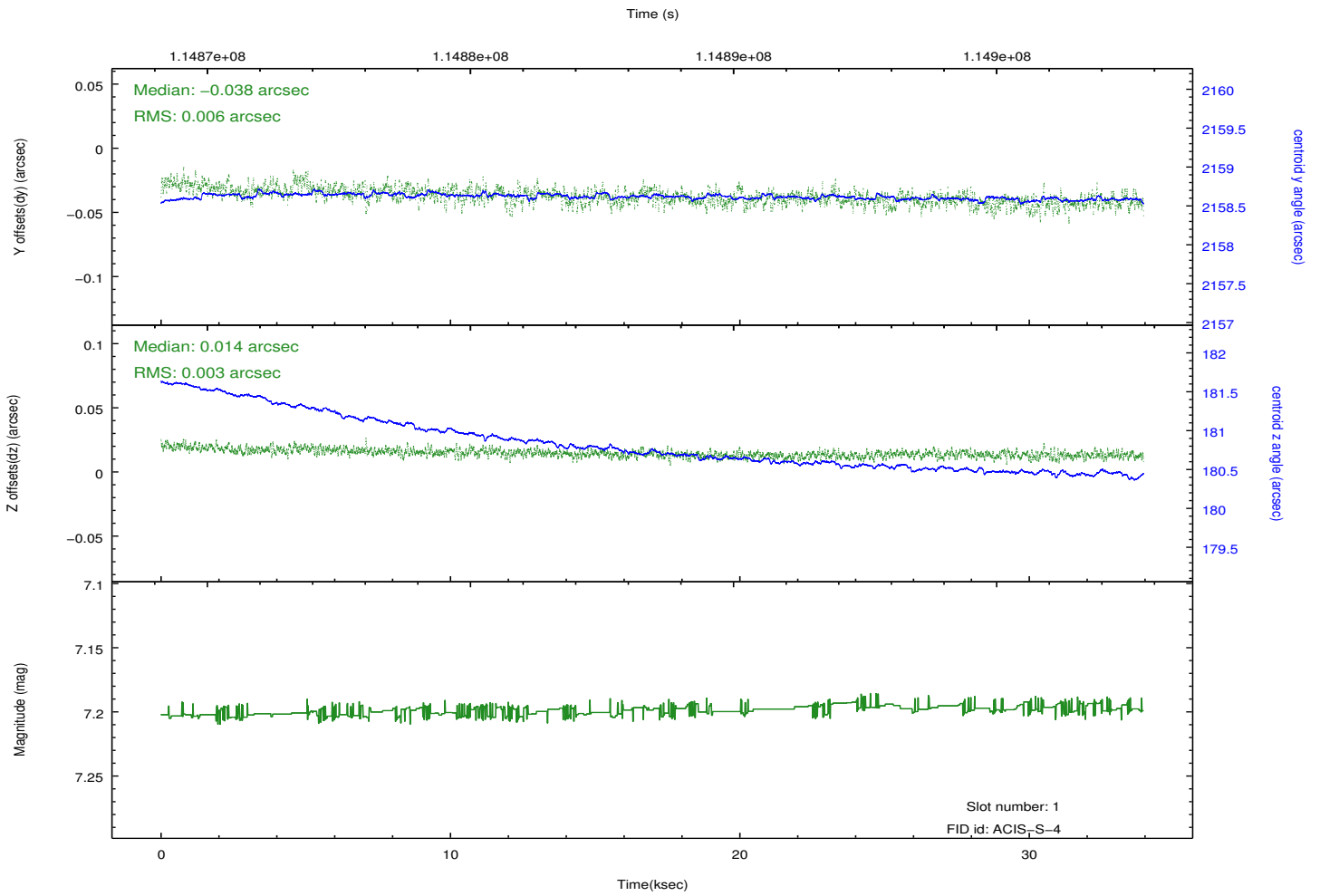
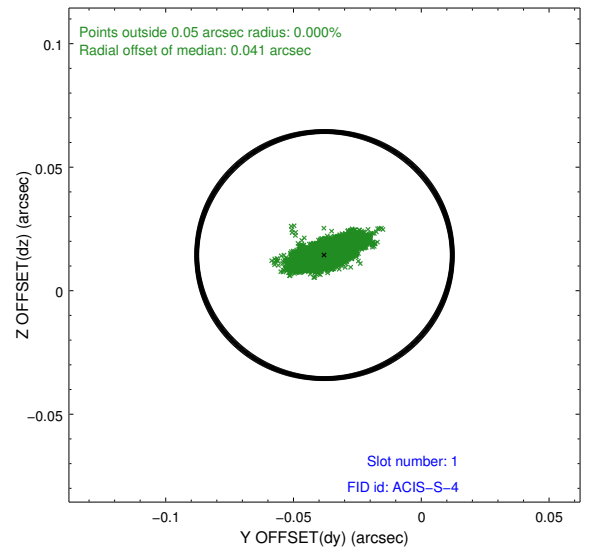
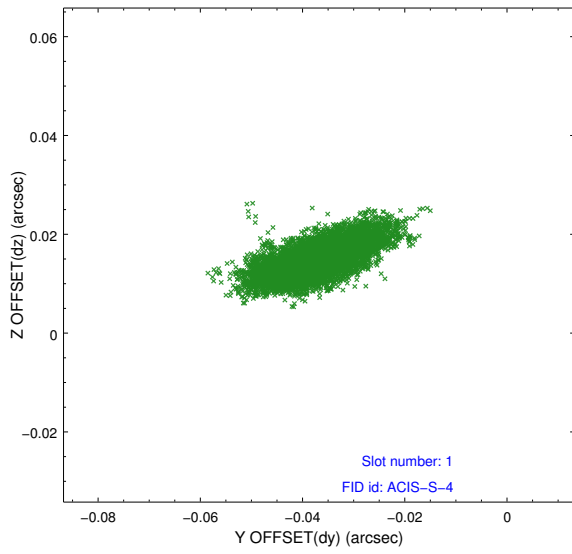


2.5 FID Slots

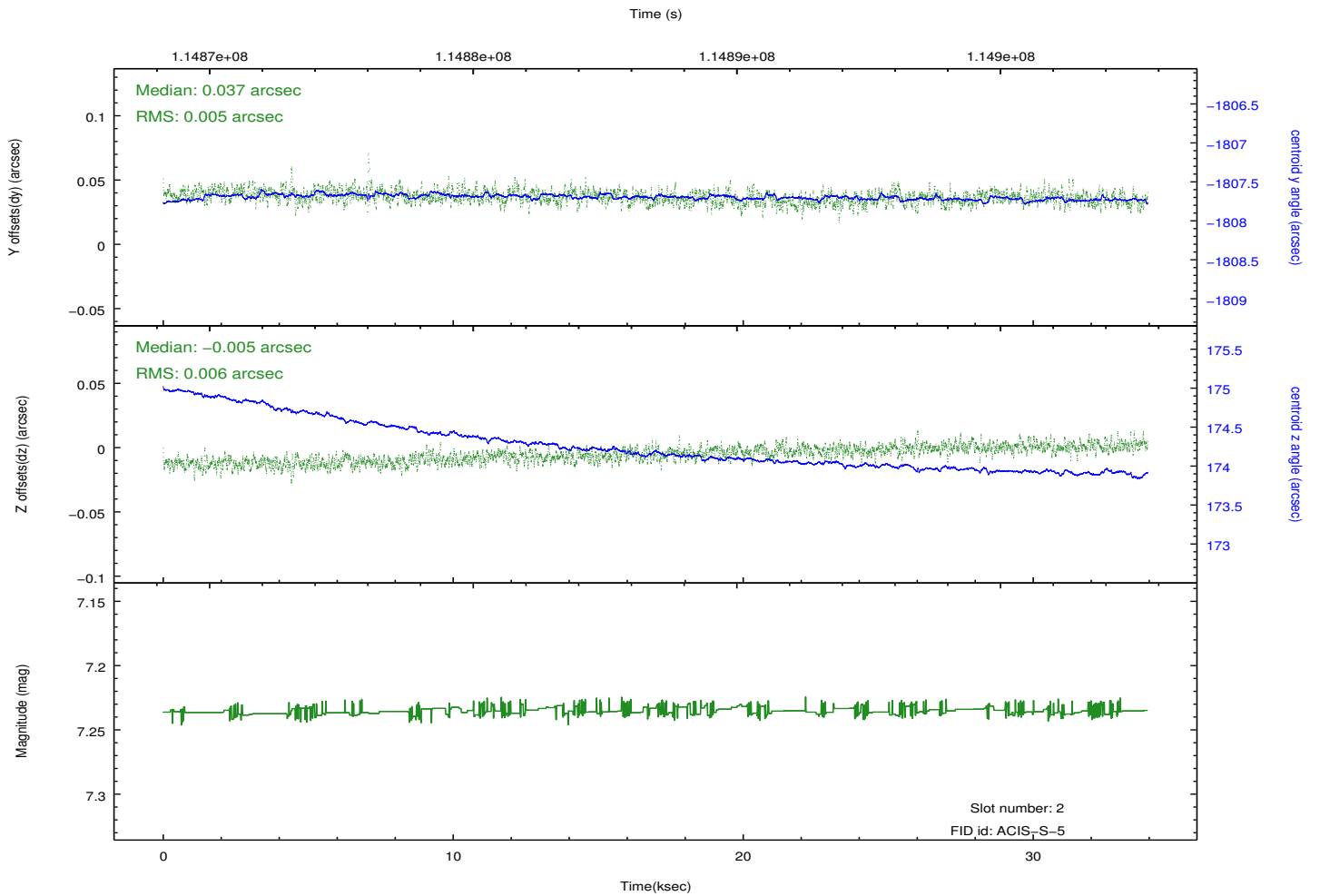
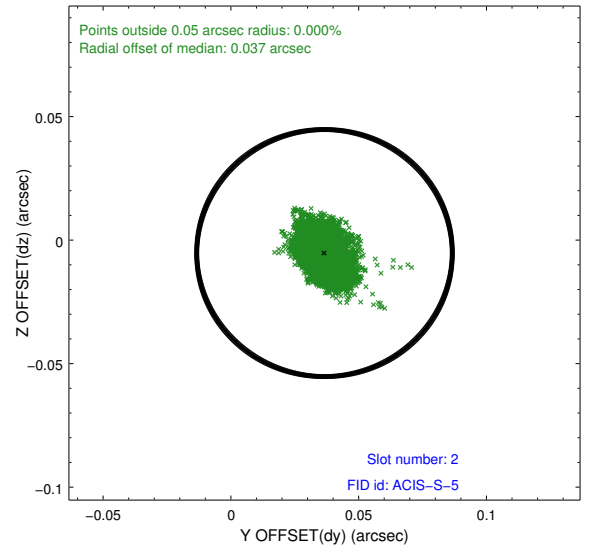
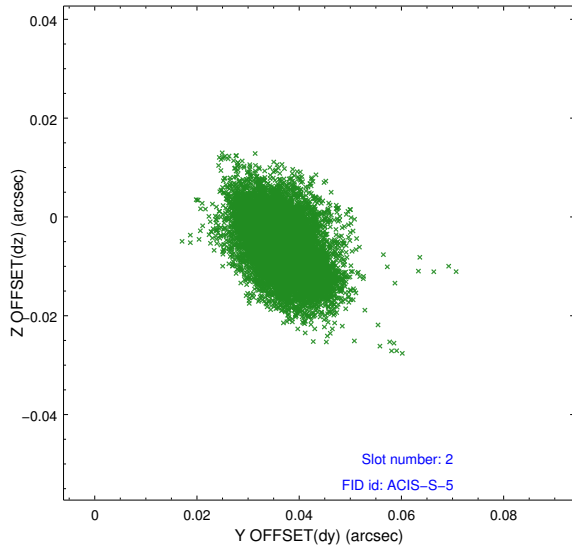
2.5.1 Slot 0



2.5.2 Slot 1



2.5.3 Slot 2



A Summary

A.1 Status

V&V Scientist	Beth Sundheim
V&V Date (YYYY-MM-DD)	2012.09.26
V&V Edition	1
V&V Disposition and Status	OK
V&V Charge Time	33.948

A.2 Comments