

V&V Reference Report

L2 ASCDS Version : 8.4.5

Observation 2147 - L2 Version 3
Chandra X-Ray Center

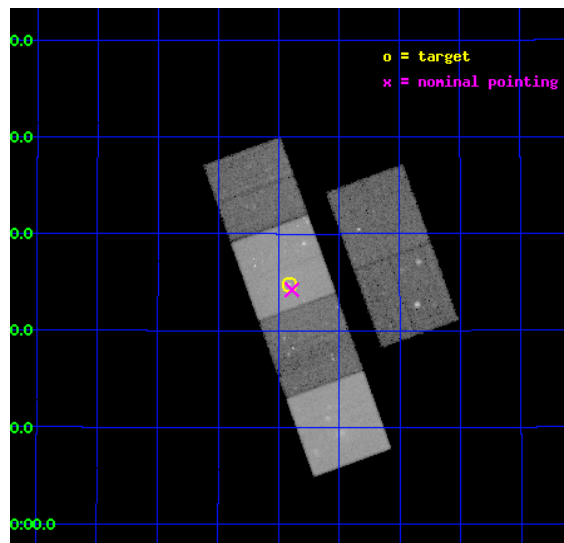
L2 Processing Date : Sep 3 2012

Contents

1	Front	2
2	OBI	3
2.1	OBI	3
2.1.1	Images	3
2.1.2	Bias	3
2.1.3	Parameters	4
2.1.4	Events	4
2.2	Compared Parameters	5
2.3	Aspect	6
2.4	Star Slots	9
2.4.1	Slot 3	9
2.4.2	Slot 4	10
2.4.3	Slot 5	11
2.4.4	Slot 6	12
2.4.5	Slot 7	13
2.5	FID Slots	14
2.5.1	Slot 0	14
2.5.2	Slot 1	15
2.5.3	Slot 2	16
A	Summary	17
A.1	Status	17
A.2	Comments	17

1 Front

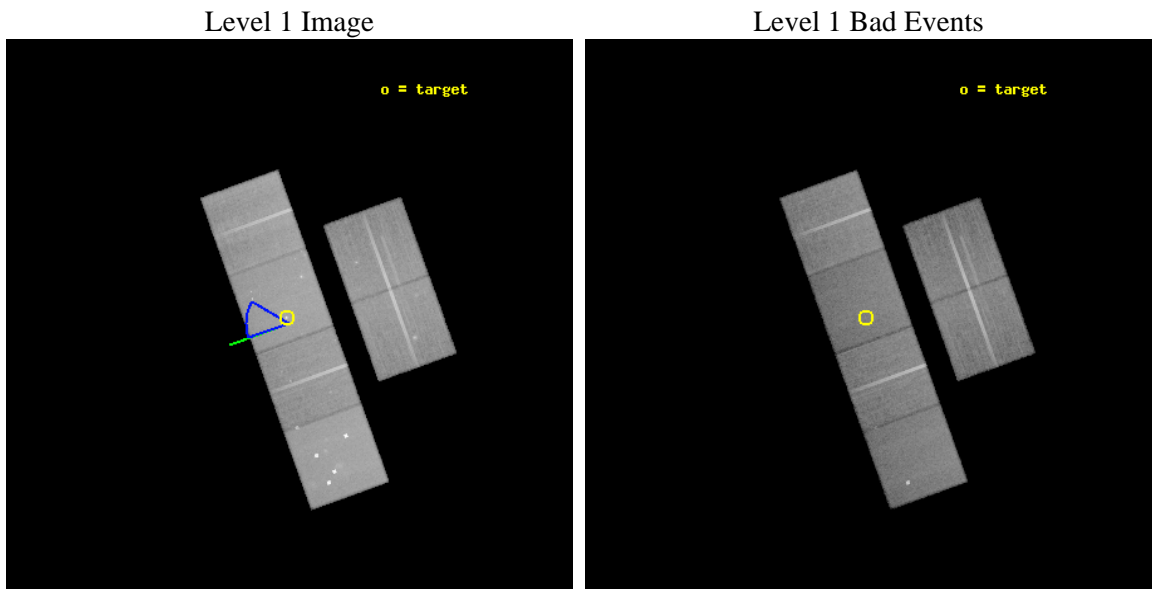
seq_num	700337	Sequence number
obs_id	2147	Observation id
title	THE ENVIRONMENT OF THE INNER JETS IN 3C31: TESTING DECELERATION MODELS	Proposal title
observer	Dr Martin Hardcastle	Principal investigator
object	3C31	Source name
dtcycle	0	
cycle	P	events from which exps? Prim/Second/Both
ra_targ	16.85375	Observer's specified target RA [deg]
dec_targ	32.41225	Observer's specified target Dec [deg]
ra_nom	16.847861571694	Nominal RA [deg]
dec_nom	32.403725718423	Nominal Dec [deg]
roll_nom	250.15977625744	Nominal Roll [deg]
revision	3	Processing version of data
ontime	44975.959071636	Sum of GTIs [s]
livetime	44406.4463966	Livetime [s]
ontime2	44979.200041875	Sum of GTIs [s]
ontime3	44975.959061638	Sum of GTIs [s]
ontime5	44979.200041875	Sum of GTIs [s]
ontime6	44975.959071621	Sum of GTIs [s]
ontime7	44975.959071636	Sum of GTIs [s]
ontime8	44979.200041875	Sum of GTIs [s]
l2events	455229	Number of level 2 events



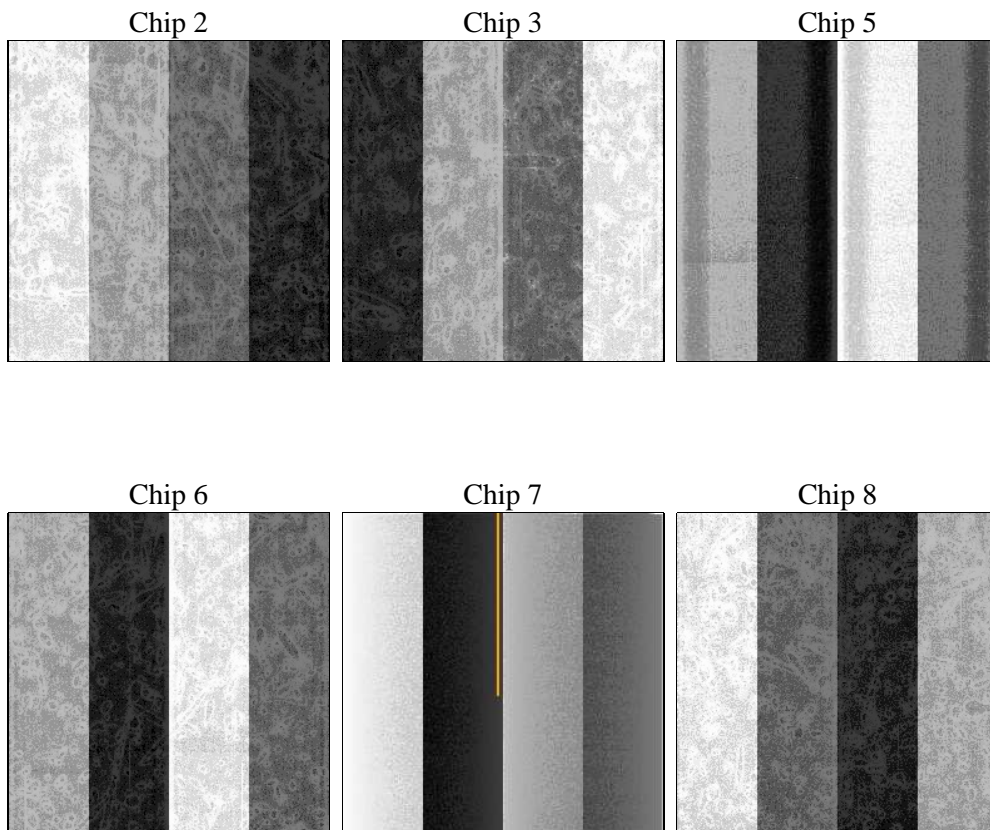
2 OBI

2.1 OBI

2.1.1 Images



2.1.2 Bias



2.1.3 Parameters

obi_num	0	Obi number	sched_exp_time	45000.000000	[s] Scheduled observation exposure time
ascdsver	8.4.5	Processing system revision	ontime	44975.959071636	Sum of GTIs [s]
caldbver	4.5.1.1	 	ontime2	44979.200041875	Sum of GTIs [s]
date	2012-09-03T04:15:06	Date and time of file creation	ontime3	44975.959061638	Sum of GTIs [s]
revision	3	Processing version of data	ontime5	44979.200041875	Sum of GTIs [s]
			ontime6	44975.959071621	Sum of GTIs [s]
			ontime7	44975.959071636	Sum of GTIs [s]
			ontime8	44979.200041875	Sum of GTIs [s]
			l1events	1934751	Number of level 1 events

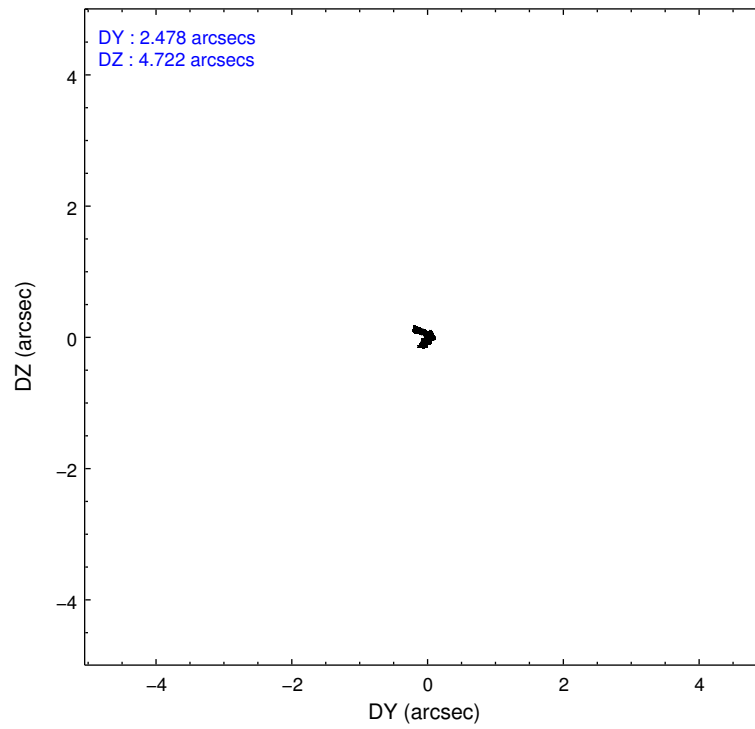
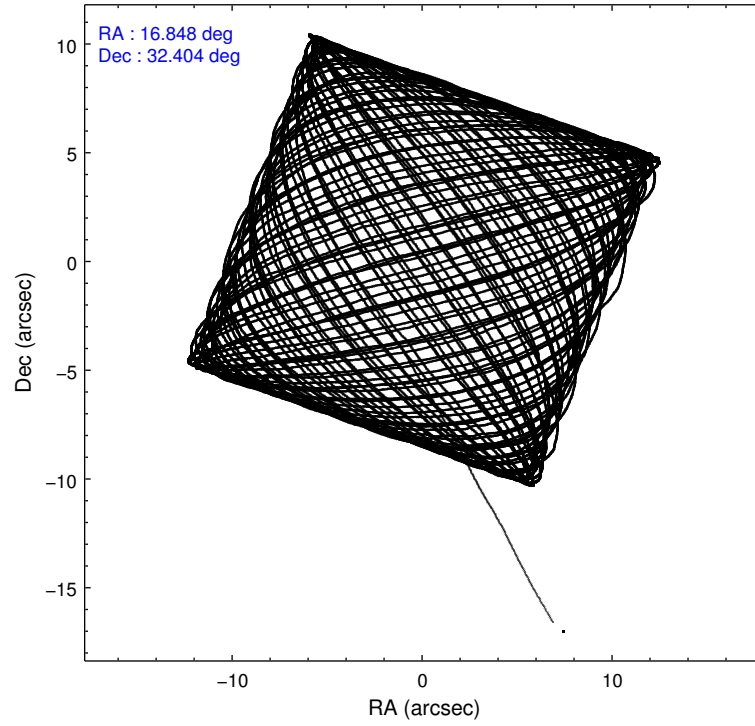
2.1.4 Events

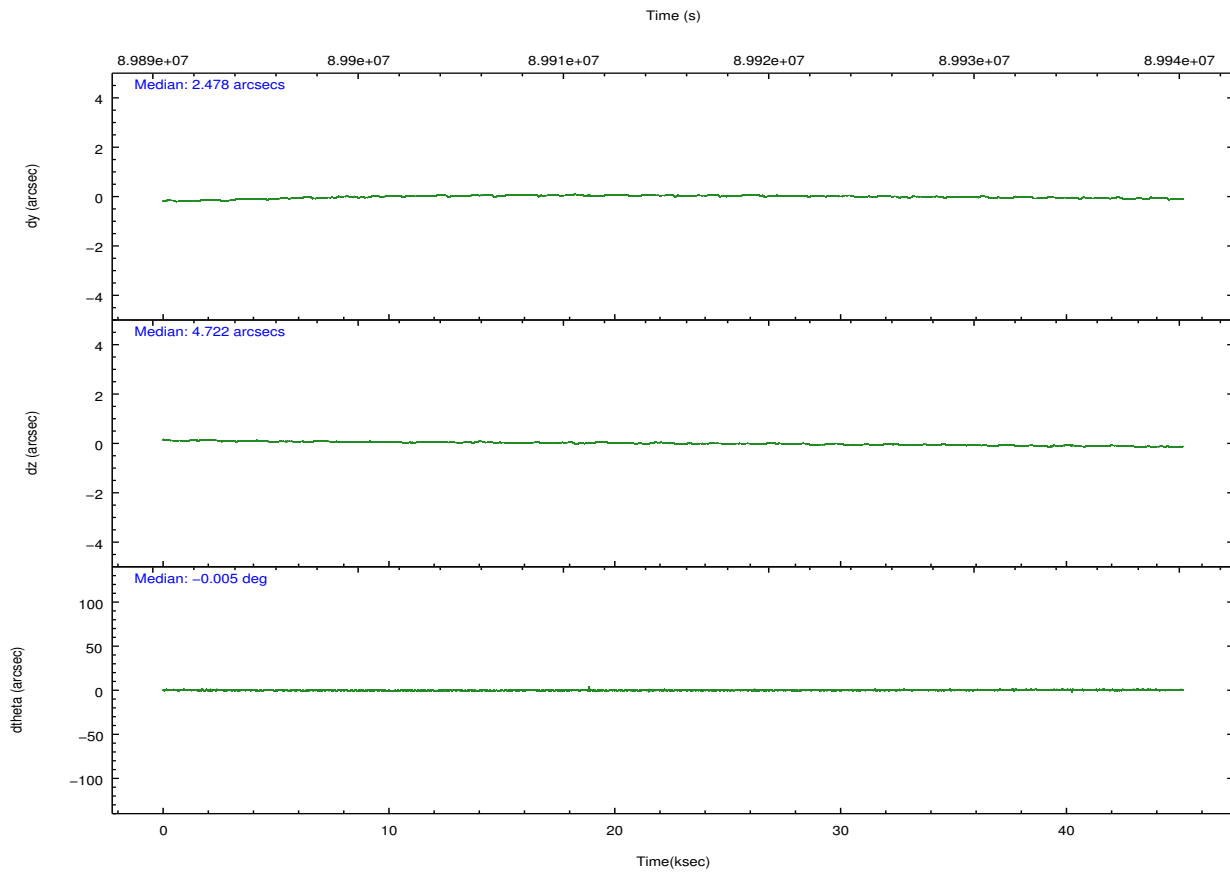
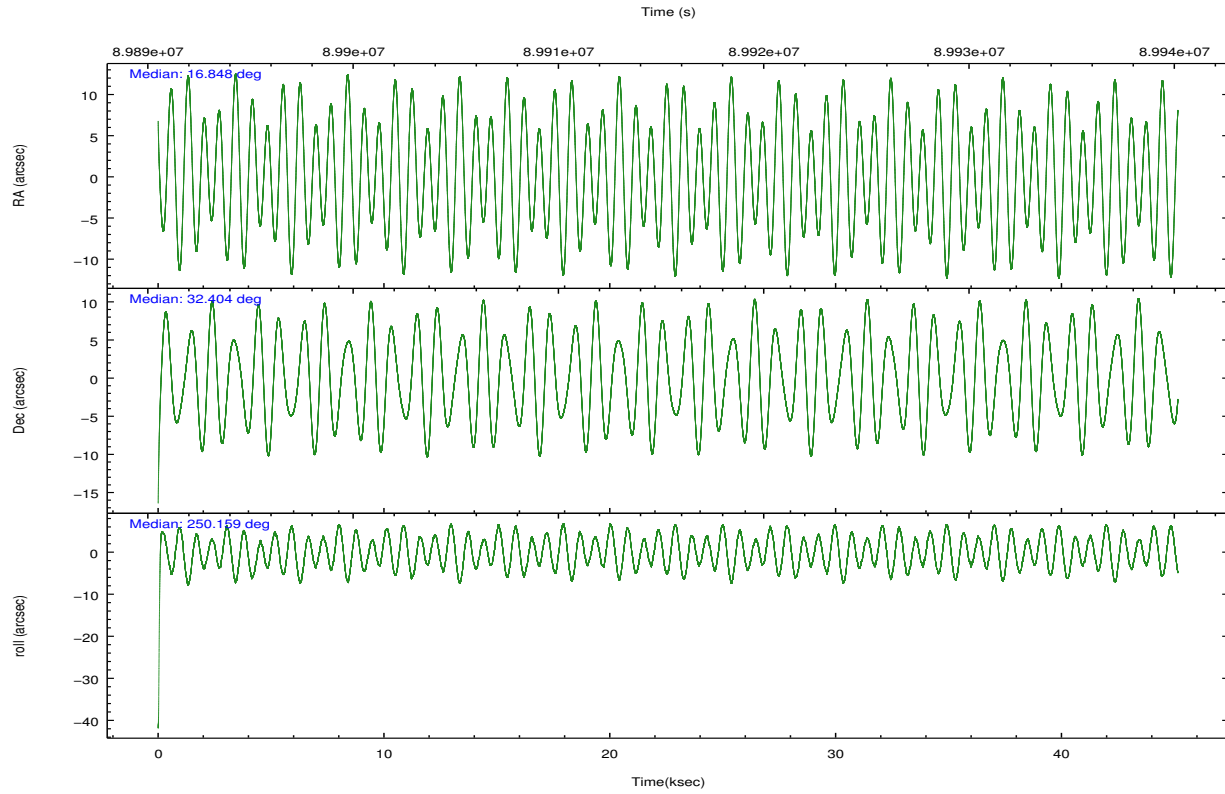
	ccd 2	ccd 3	ccd 5	ccd 6	ccd 7	ccd 8		ccd 2	ccd 3	ccd 5	ccd 6	ccd 7	ccd 8
level 1 events	278082	260738	414655	280534	358553	342189	grade 0 events	16011	15235	55329	21016	21738	23498
rejected events	244341	228094	200597	239884	193677	272616		5%	5%	13%	7%	6%	6%
rejected %	87%	87%	48%	85%	54%	79%	grade 1 events	150	132	1471	155	324	180
								0%	0%	0%	0%	0%	0%
							grade 2 events	6678	6133	54529	6876	34122	14581
								2%	2%	13%	2%	9%	4%
							grade 3 events	2878	2951	8306	3371	15684	7233
								1%	1%	2%	1%	4%	2%
							grade 4 events	2878	2989	8187	3276	15757	6954
								1%	1%	1%	1%	4%	2%
							grade 5 events	9065	9719	28408	10886	31952	13734
								3%	3%	6%	3%	8%	4%
							grade 6 events	5299	5340	87725	6115	77586	17309
								1%	2%	21%	2%	21%	5%
							grade 7 events	235123	218239	170700	228839	161390	258700
								84%	83%	41%	81%	45%	75%

2.2 Compared Parameters

Parameter	Planned	Actual	Parameter	Planned	Actual
Instrument	ACIS	ACIS	Obspar format version number	7	7
Detector	ACIS-235678	ACIS-235678	Obspar file type	PREDICTED	ACTUAL
Grating	NONE	NONE	Obspar update status	NONE	UPDATED
Data mode	FAINT	FAINT	Number of optional ACIS chips dropped	0	0
Observation mode	POINTING	POINTING	On-chip summing requested	N	N
[deg] Pointing RA	16.841905	16.84786157169371	Subarray requested	NONE	NONE
[deg] Pointing Dec	32.430606	32.40372571842283	Alternating exposures requested	N	N
[deg] Pointing Roll	250.006354	250.1597762574415	[s] Primary exposure time	0.000000	3.2
[deg] Roll angle	275.000000	275.000000			
[deg] Roll tolerance	25.000000	25.000000			
Roll constraint allows 180D rotation	N	N			
[mm] SIM focus pos	-0.684267	-0.6828225247311905			
[mm] SIM defocus	0	0.001444936568705701			
[mm] SIM translation stage pos	-190.132523	-190.1400660498719			
[mm] SIM translation stage offset	0	0.00754346686406393			
[s] Observation start time (MET)	89892917.184000	89891943.955405			
Observation start date	2000-11-06T10:14:13	2000-11-06T09:59:03			
[s] Observation end time (MET)	89937917.184000	89939765.332213			
Observation end date	2000-11-06T22:44:13	2000-11-06T23:16:05			
Read mode	TIMED	TIMED			

2.3 Aspect



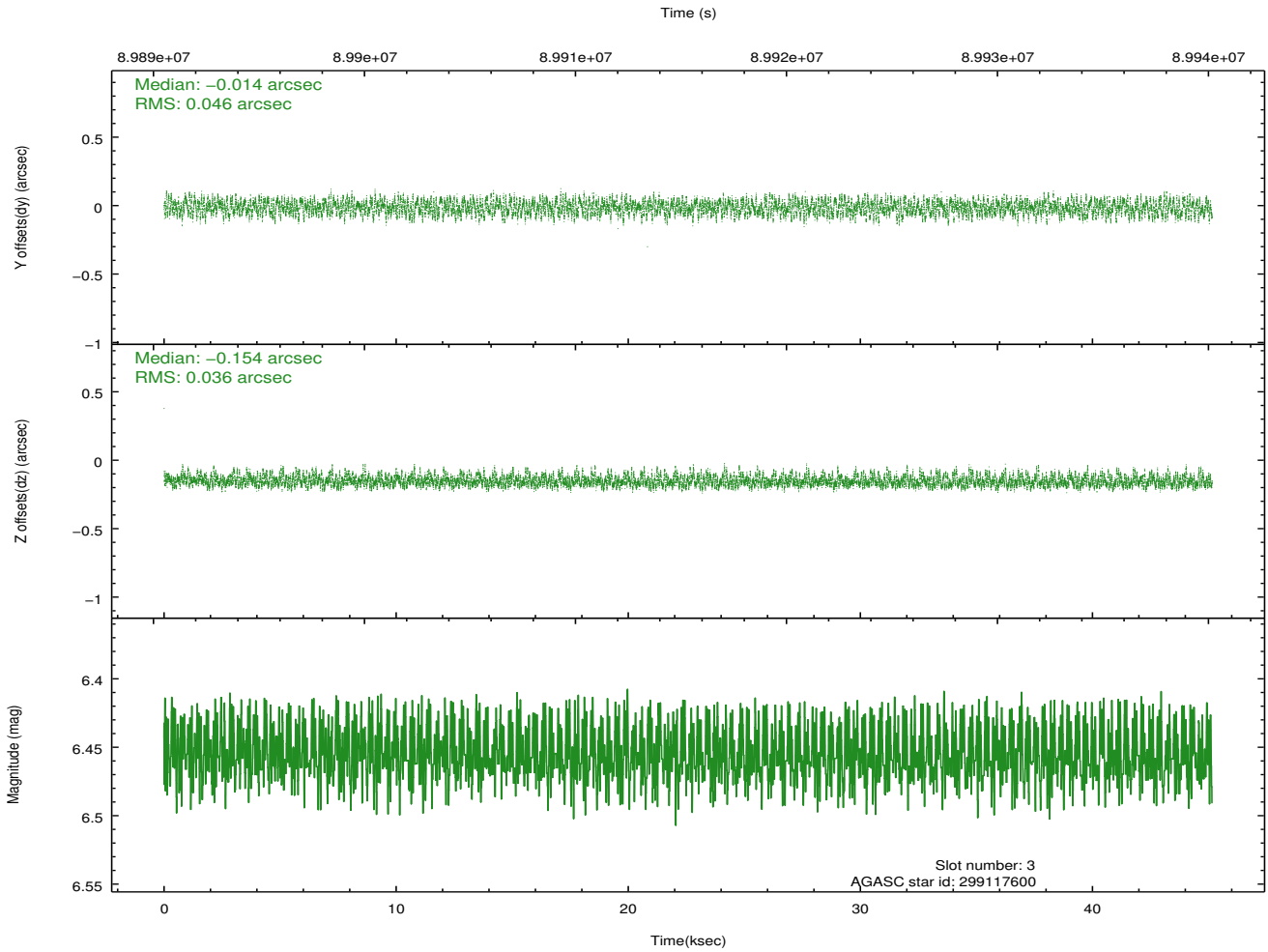
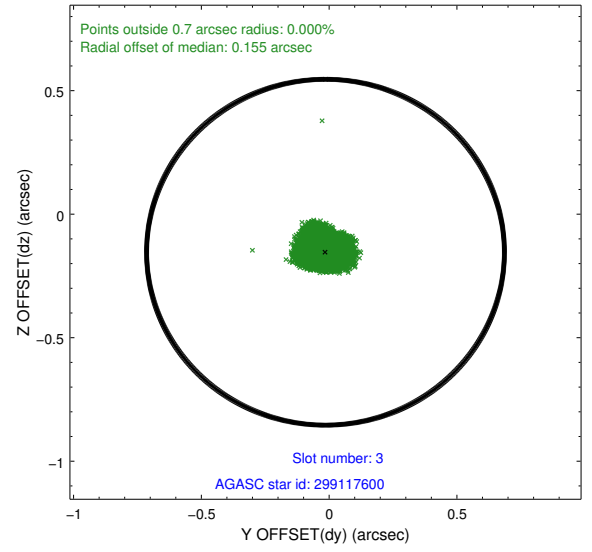
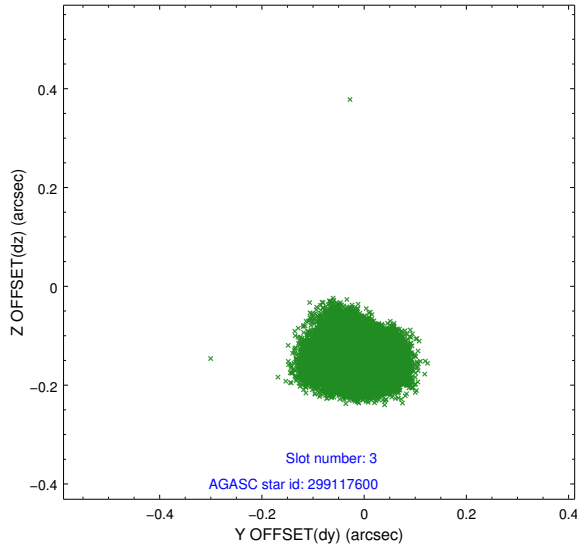


Slot Statistics

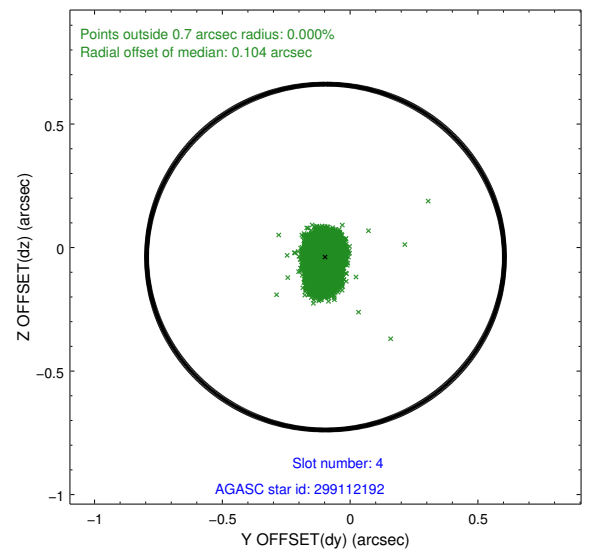
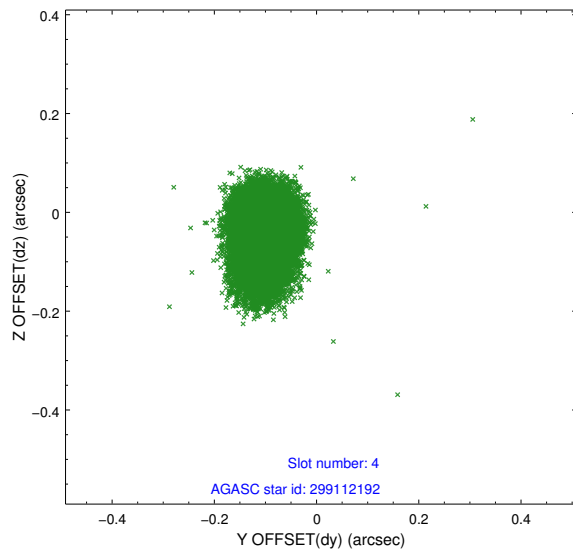
slot	status	id	mag	n_pts	med_dy	med_dz	dr1	dr2	ra	dec	mean_y	mean_z
0	FID	ACIS-S-2	7.12	11013	-0.036	-0.016	0.007	0.011	0.000000	0.000000	-755.10	-1725.85
1	FID	ACIS-S-4	7.20	11013	-0.001	0.022	0.006	0.011	0.000000	0.000000	2158.19	182.72
2	FID	ACIS-S-5	7.24	11014	0.006	0.003	0.007	0.012	0.000000	0.000000	-1807.93	176.31
3	GUIDE	299117600	6.46	22028	-0.014	-0.154	0.064	0.096	17.005601	32.012121	1245.27	984.50
4	GUIDE	299112192	7.86	22026	-0.096	-0.038	0.060	0.104	16.475791	32.993623	-1527.78	-1732.66
5	GUIDE	298586320	8.66	22024	-0.026	0.157	0.055	0.091	16.564219	31.844567	2272.63	-77.04
6	GUIDE	299113448	9.15	22020	0.024	0.001	0.063	0.103	16.510971	32.256490	932.98	-733.07
7	GUIDE	299118016	9.32	22020	0.113	0.036	0.078	0.126	17.090502	31.987010	1241.28	1259.00

2.4 Star Slots

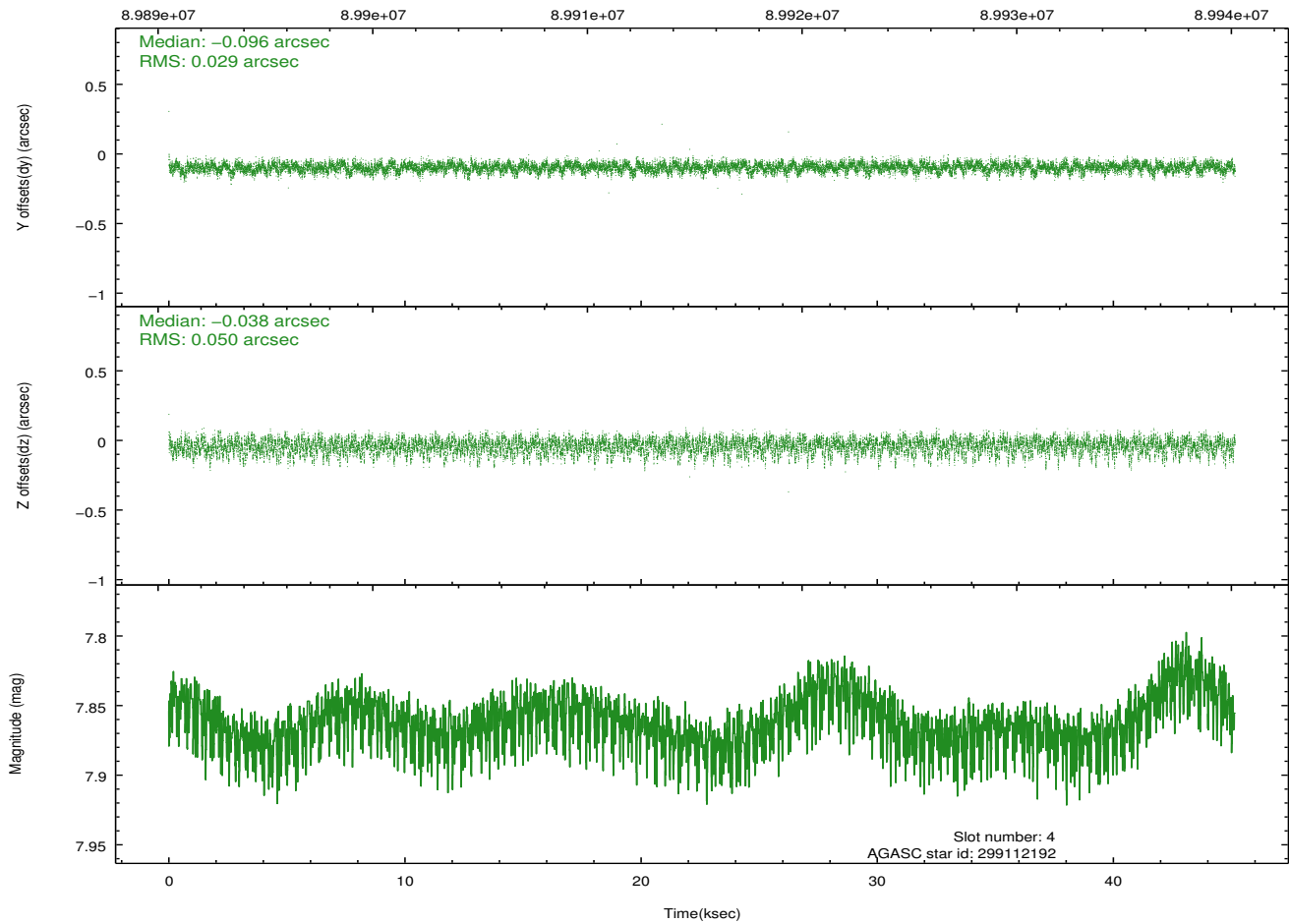
2.4.1 Slot 3



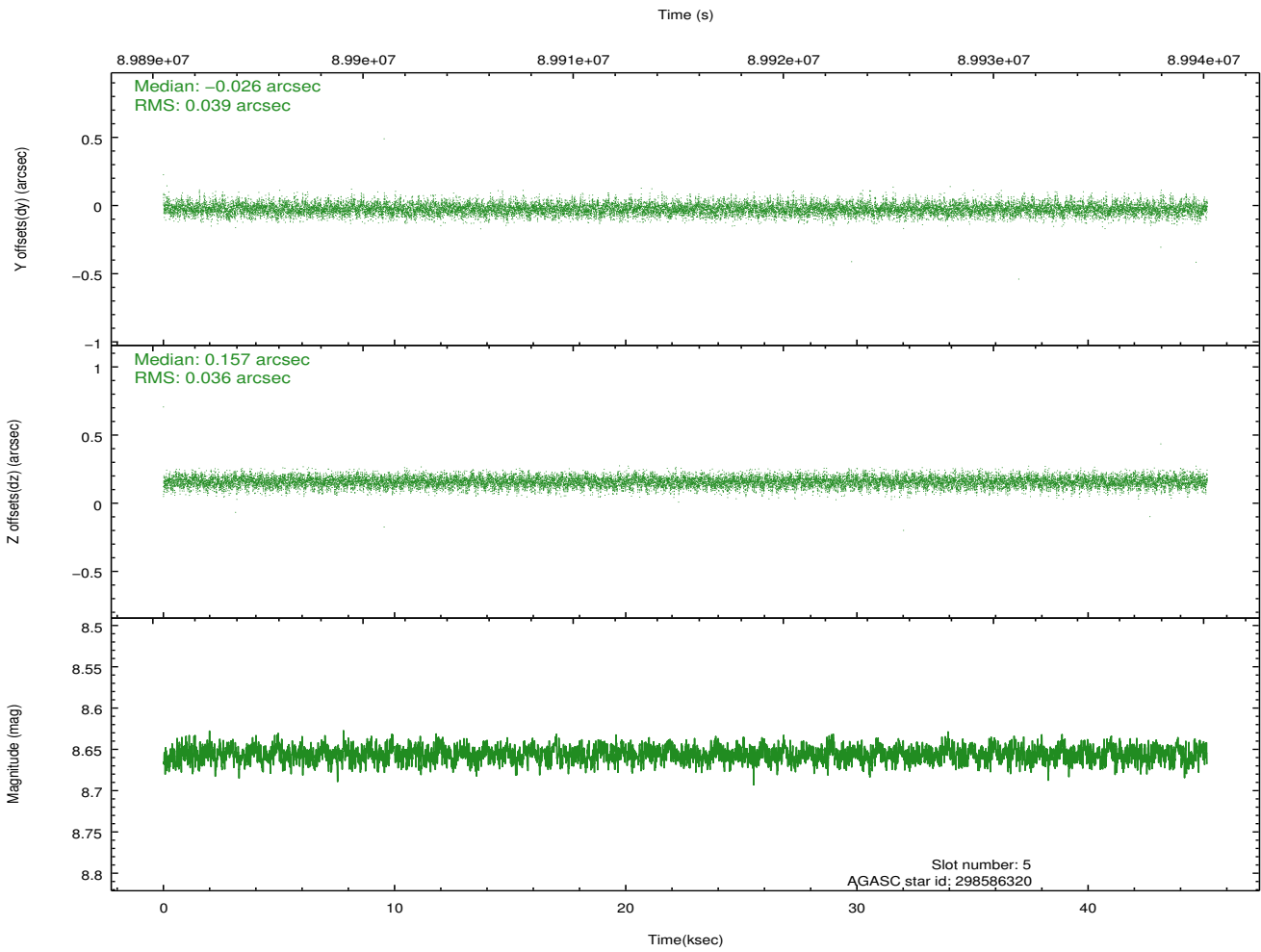
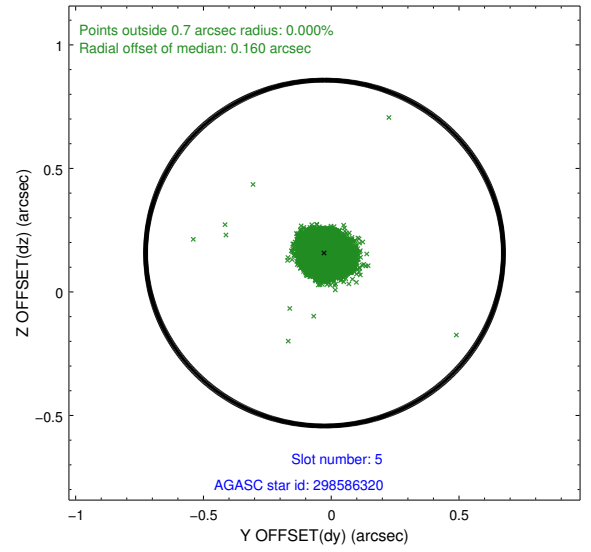
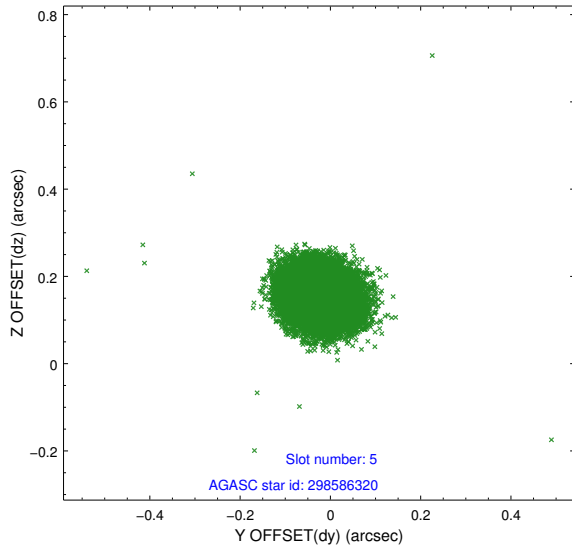
2.4.2 Slot 4



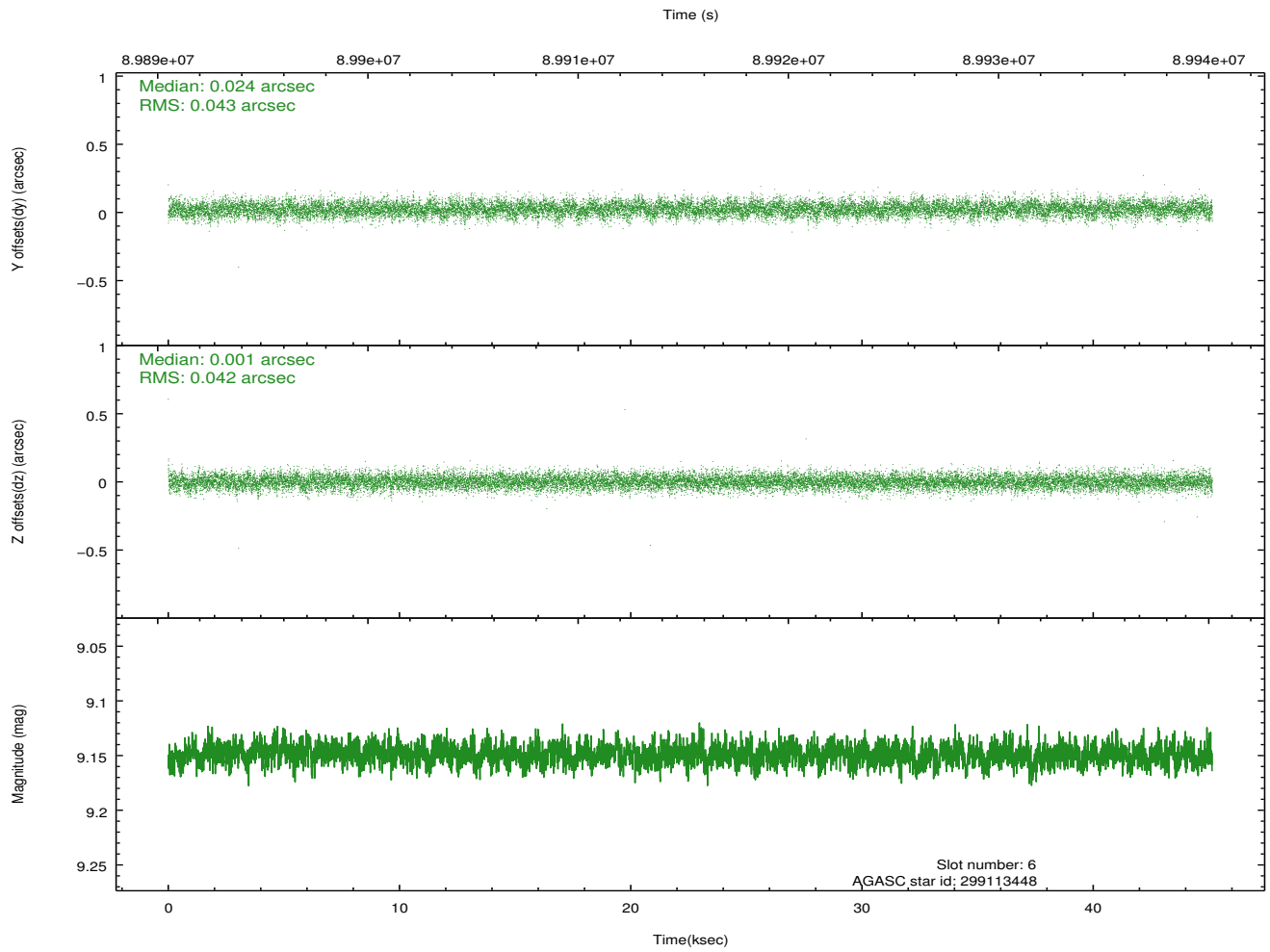
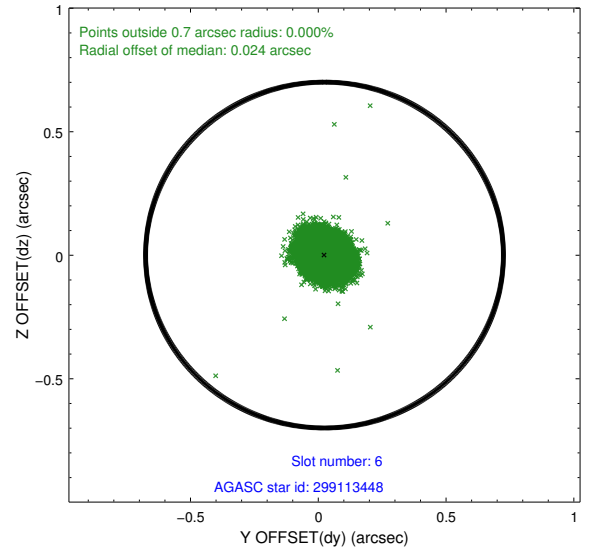
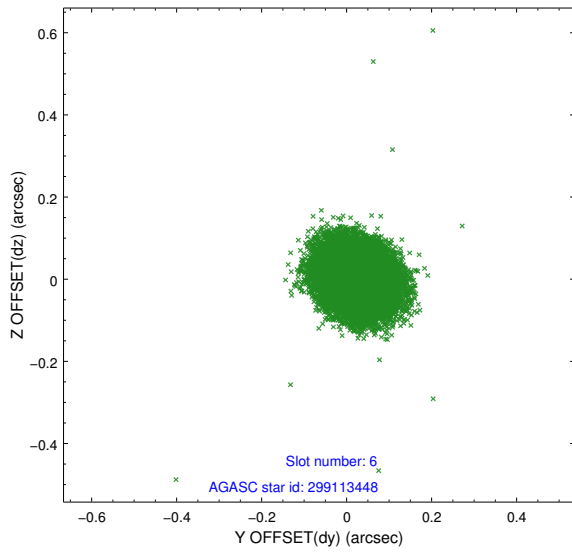
Time (s)



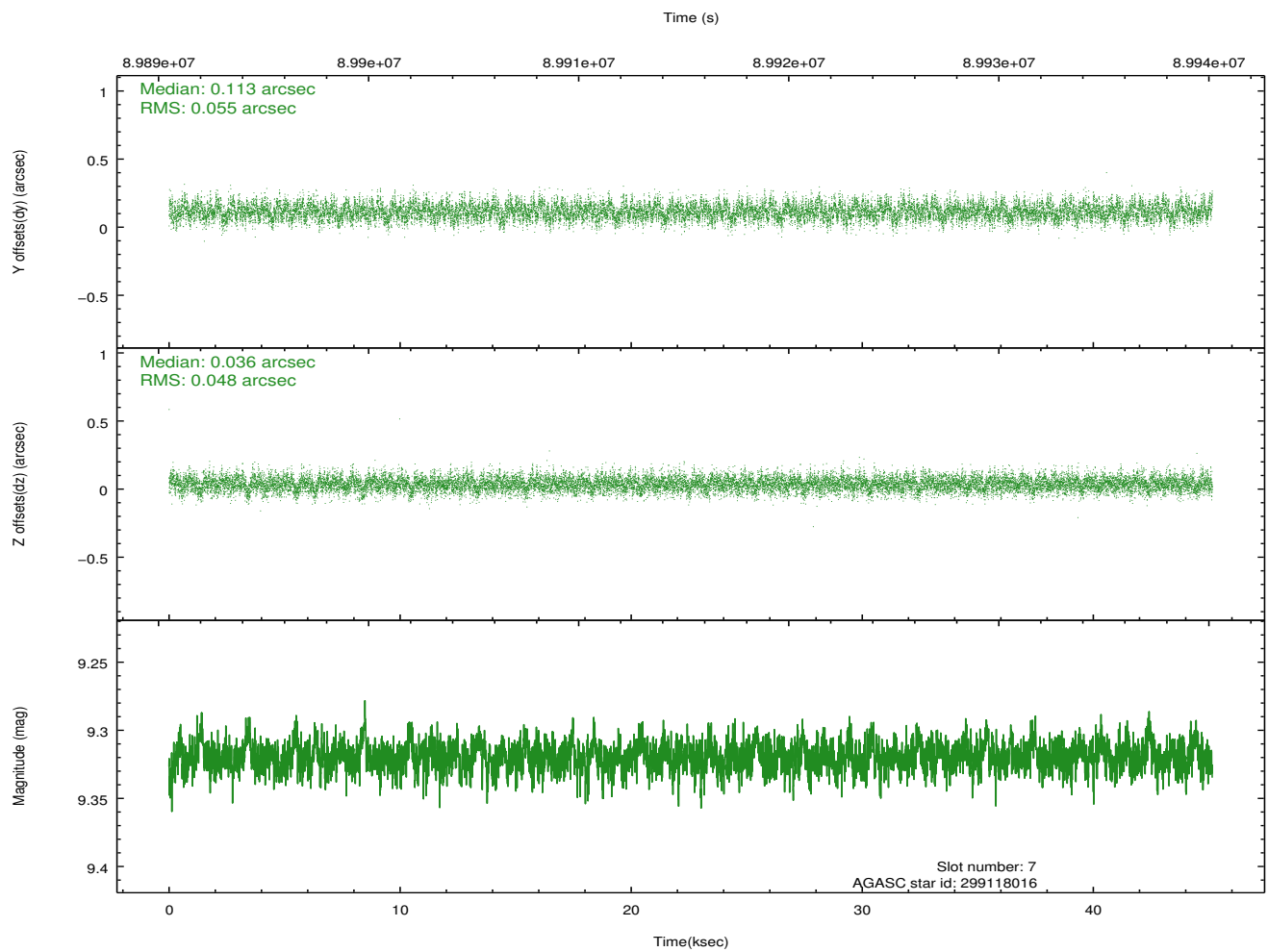
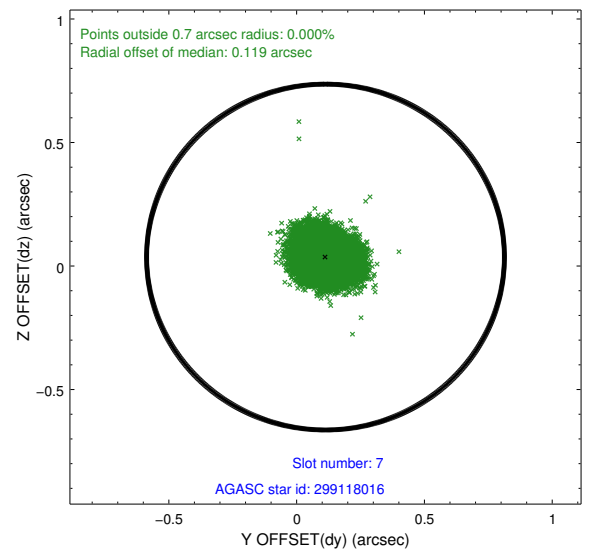
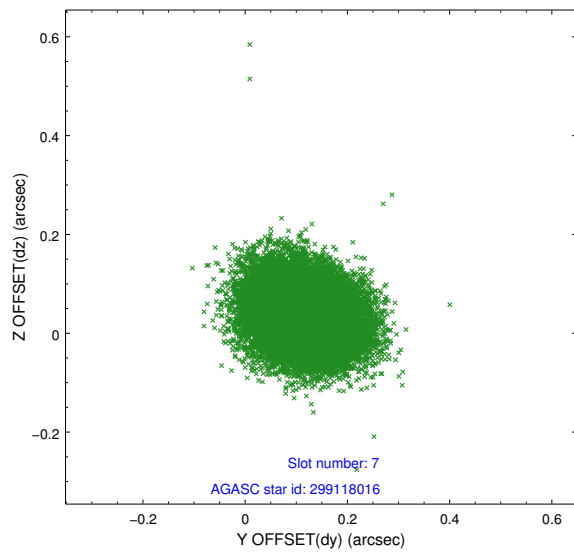
2.4.3 Slot 5



2.4.4 Slot 6

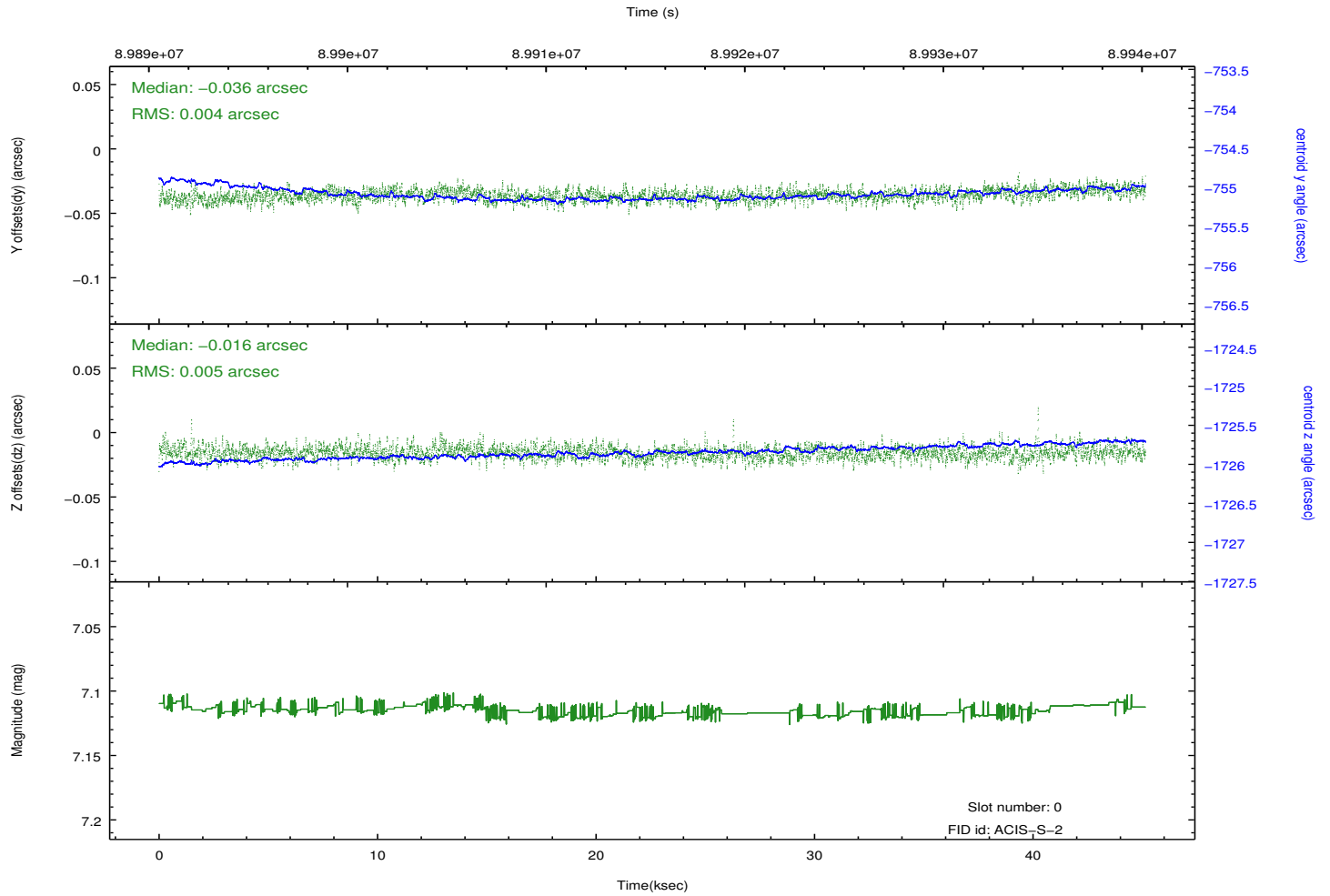
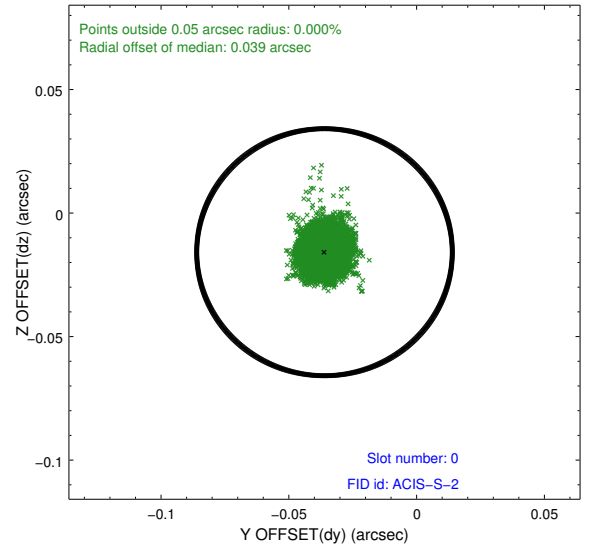
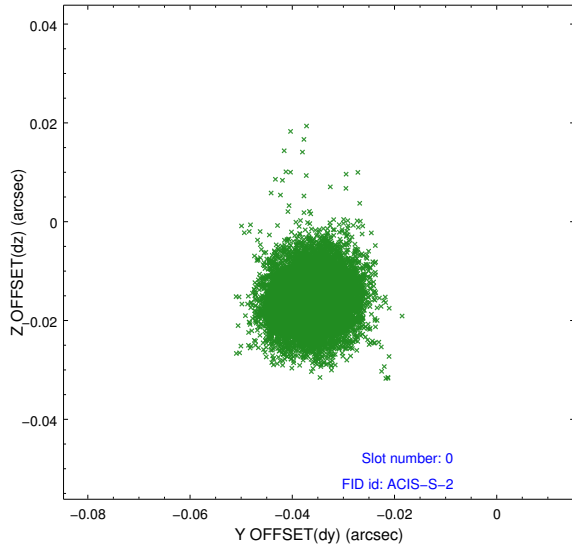


2.4.5 Slot 7

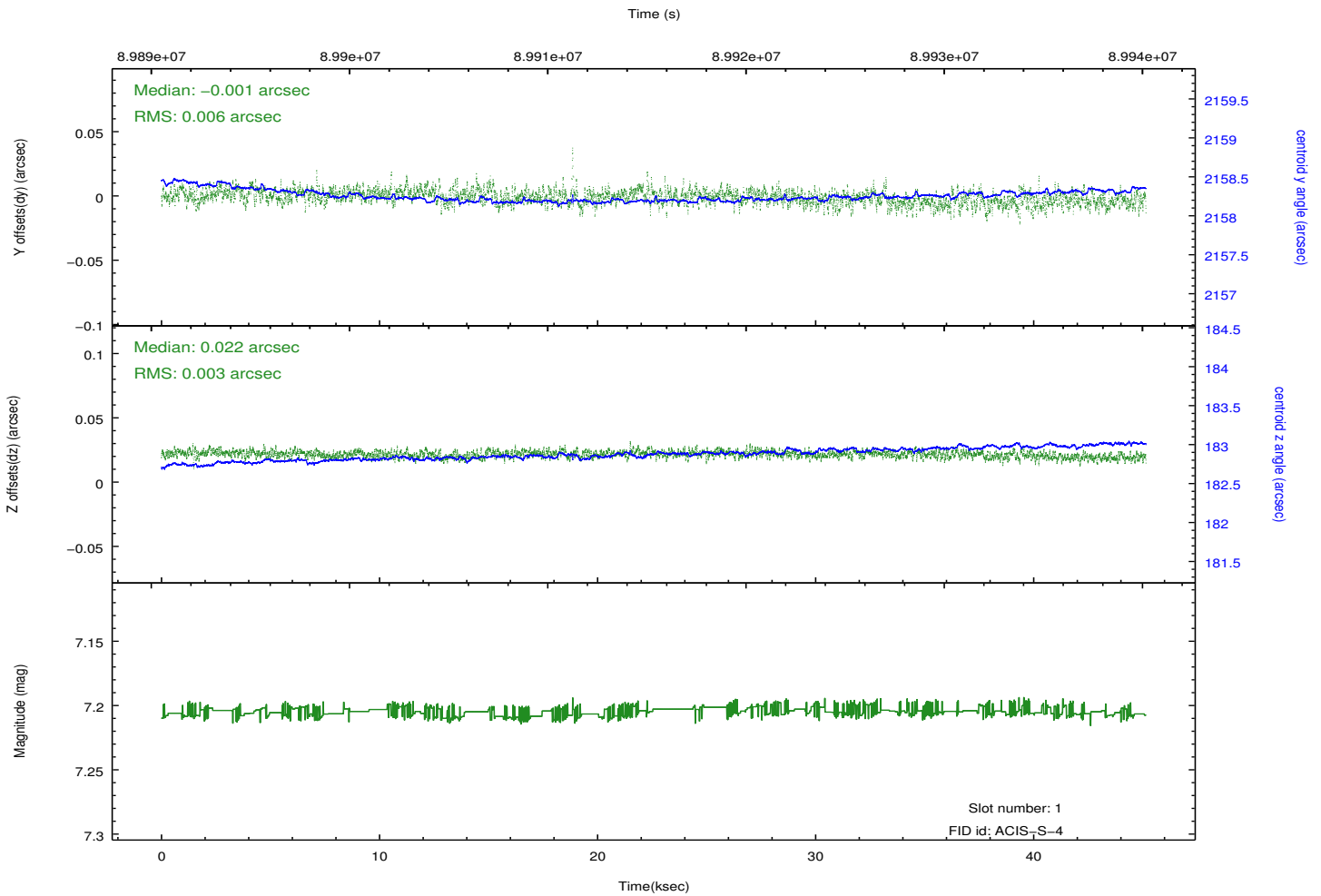
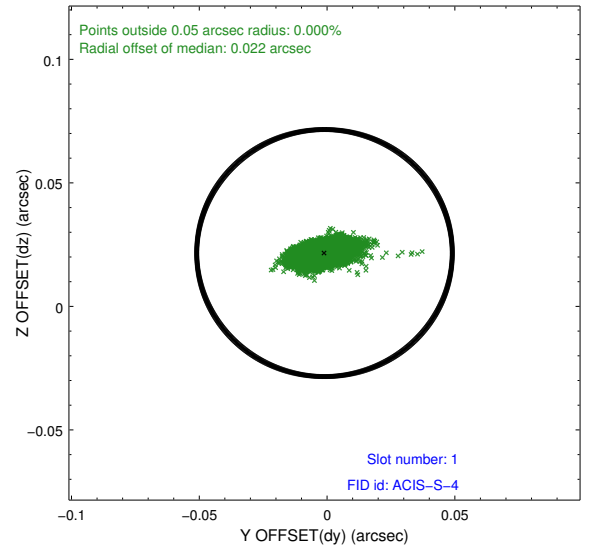
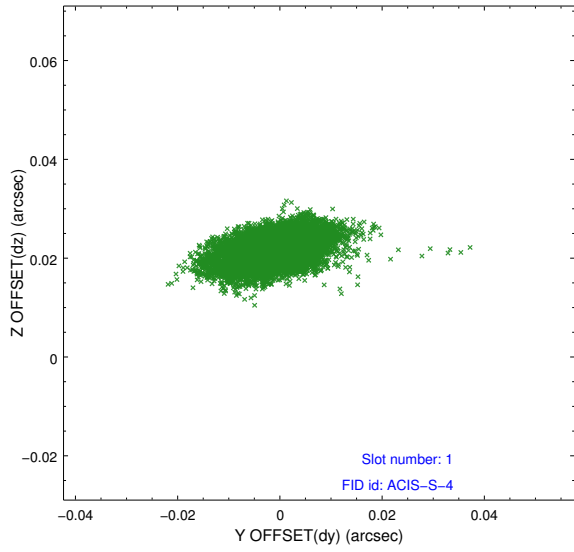


2.5 FID Slots

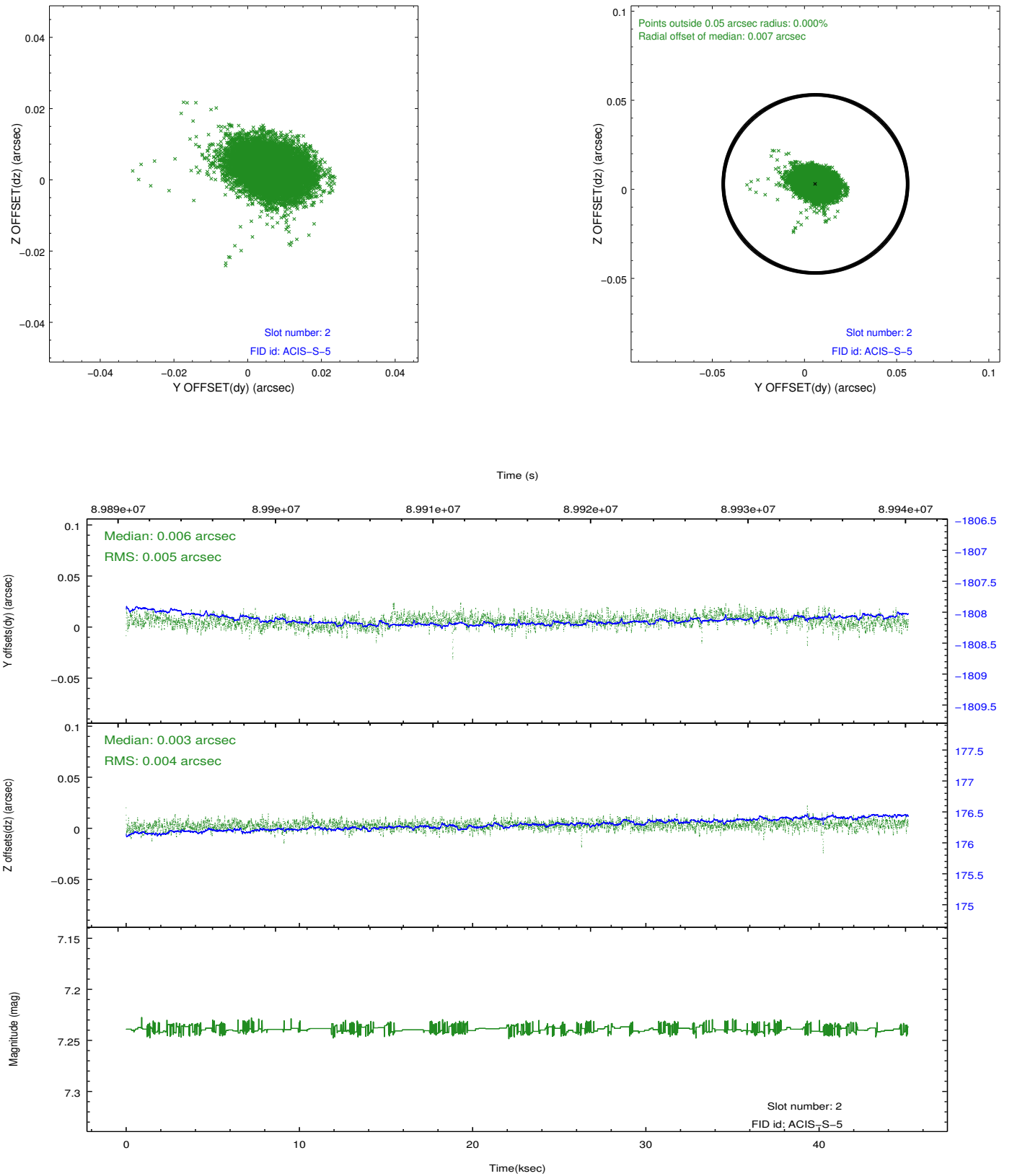
2.5.1 Slot 0



2.5.2 Slot 1



2.5.3 Slot 2



A Summary

A.1 Status

V&V Scientist	Jen Lauer
V&V Date (YYYY-MM-DD)	2012.09.11
V&V Edition	1
V&V Disposition and Status	OK
V&V Charge Time	44.979

A.2 Comments

Roll constraint met.