

V&V Reference Report

L2 ASCDS Version : 8.4.5

Observation 2187 - L2 Version 3
Chandra X-Ray Center

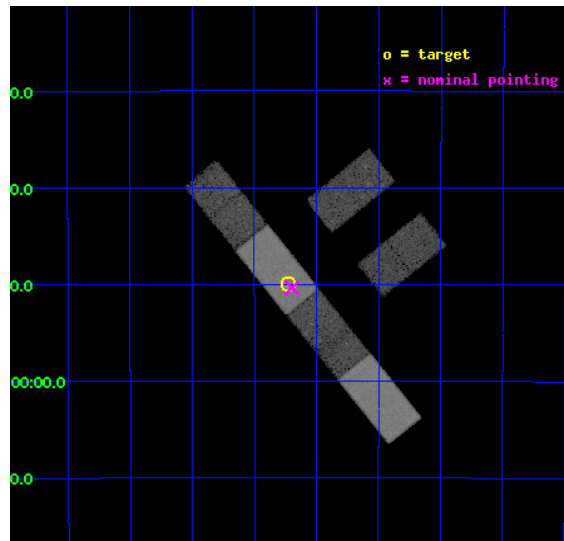
L2 Processing Date : Sep 23 2012

Contents

1	Front	2
2	OBI	3
2.1	OBI	3
2.1.1	Images	3
2.1.2	Bias	3
2.1.3	Parameters	4
2.1.4	Events	4
2.2	Compared Parameters	5
2.3	Aspect	6
2.4	Star Slots	9
2.4.1	Slot 3	9
2.4.2	Slot 4	10
2.4.3	Slot 5	11
2.4.4	Slot 6	12
2.4.5	Slot 7	13
2.5	FID Slots	14
2.5.1	Slot 0	14
2.5.2	Slot 1	15
2.5.3	Slot 2	16
A	Summary	17
A.1	Status	17
A.2	Comments	17

1 Front

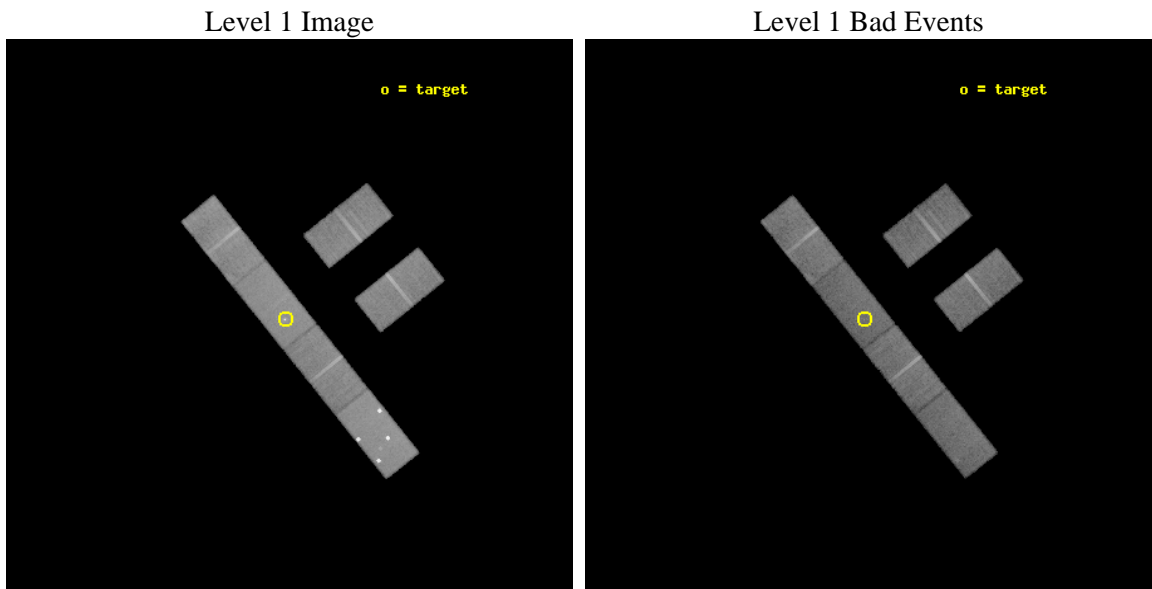
seq_num	700377	Sequence number
obs_id	2187	Observation id
title	USING CHANDRA TO ELUCIDATE THE STARBURST-AGN CONNECTION	Proposal t
observer	Dr. Nancy Levenson	Principal investigator
object	NGC 5135	Source name
dtcycle	0	
cycle	P	events from which exps? Prim/Second/Both
ra_targ	201.432917	Observer's specified target RA [deg]
dec_targ	-29.832944	Observer's specified target Dec [deg]
ra_nom	201.42441864743	Nominal RA [deg]
dec_nom	-29.839318612702	Nominal Dec [deg]
roll_nom	231.12265013926	Nominal Roll [deg]
revision	3	Processing version of data
ontime	29969.999950394	Sum of GTIs [s]
livetime	29301.916259674	Livetime [s]
ontime2	29969.999950394	Sum of GTIs [s]
ontime3	29969.999950394	Sum of GTIs [s]
ontime5	29969.999950394	Sum of GTIs [s]
ontime6	29969.999950394	Sum of GTIs [s]
ontime7	29969.999950394	Sum of GTIs [s]
ontime8	29969.999950394	Sum of GTIs [s]
l2events	164345	Number of level 2 events



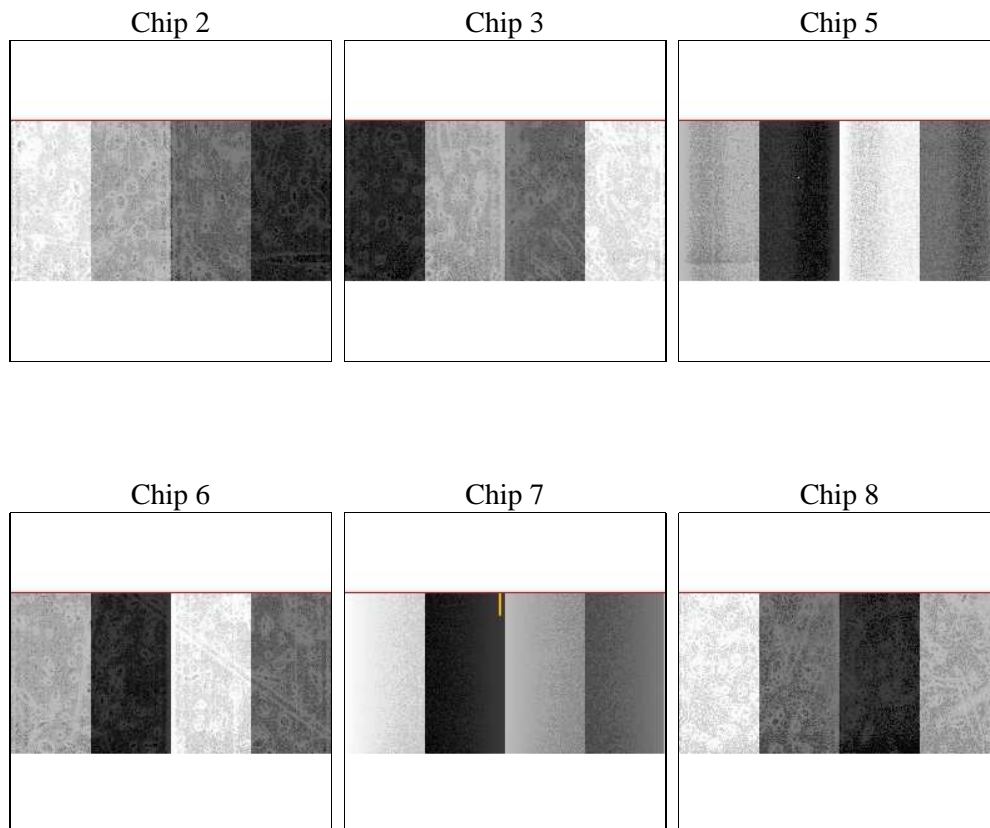
2 OBI

2.1 OBI

2.1.1 Images



2.1.2 Bias



2.1.3 Parameters

obi_num	0	Obi number	sched_exp_time	29700.000000	[s] Scheduled observation exposure time
ascdsver	8.4.5	Processing system revision	ontime	29969.999950394	Sum of GTIs [s]
caldsver	4.5.1.1	 	ontime2	29969.999950394	Sum of GTIs [s]
date	2012-09-23T15:58:42	Date and time of file creation	ontime3	29969.999950394	Sum of GTIs [s]
revision	3	Processing version of data	ontime5	29969.999950394	Sum of GTIs [s]
			ontime6	29969.999950394	Sum of GTIs [s]
			ontime7	29969.999950394	Sum of GTIs [s]
			ontime8	29969.999950394	Sum of GTIs [s]
			l1events	775141	Number of level 1 events

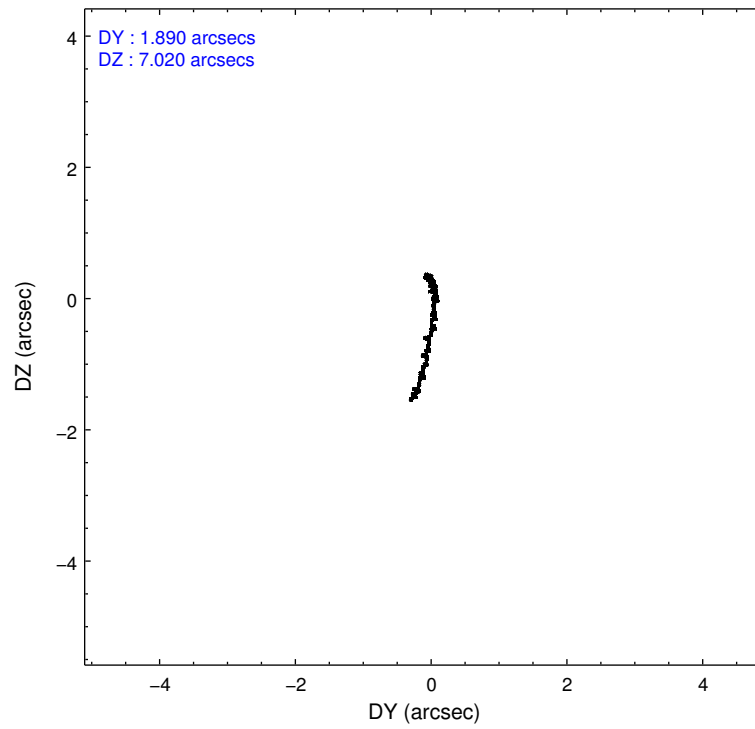
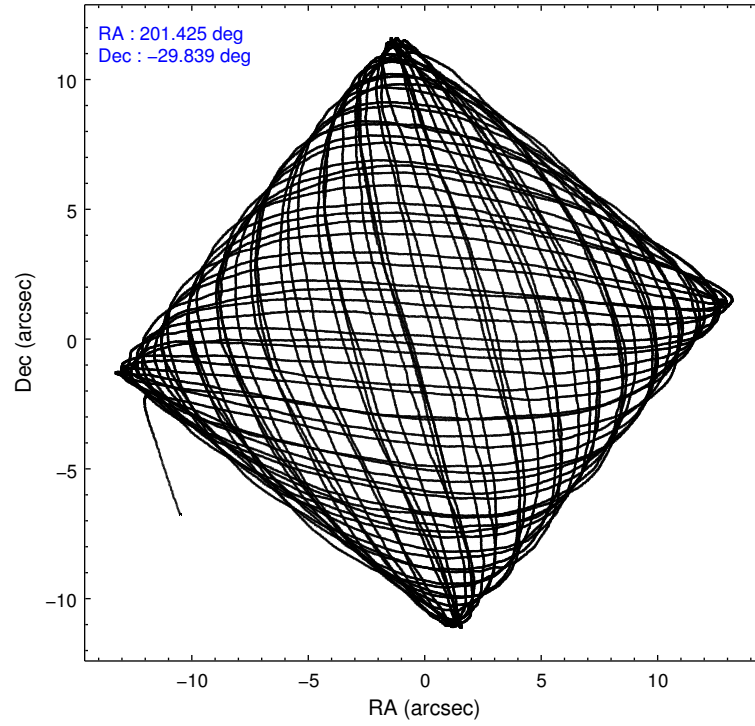
2.1.4 Events

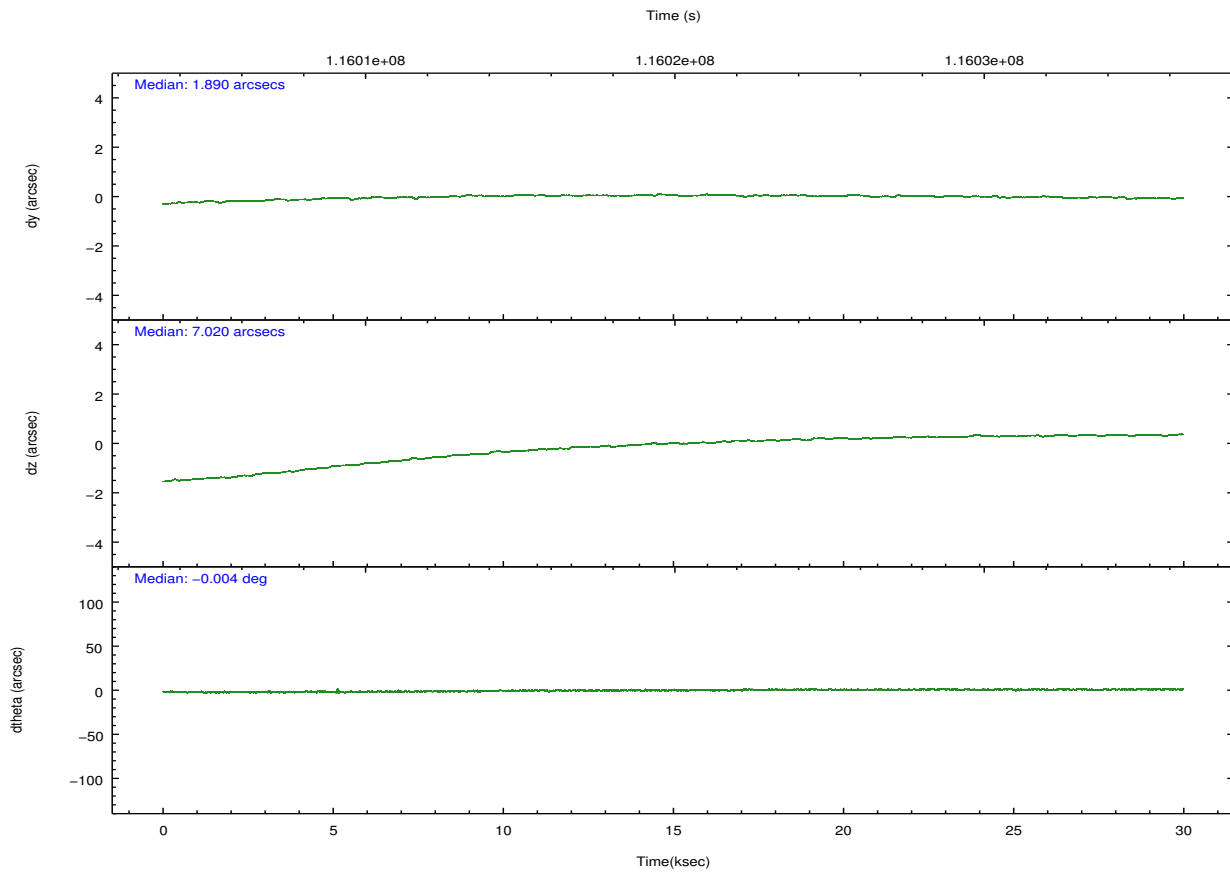
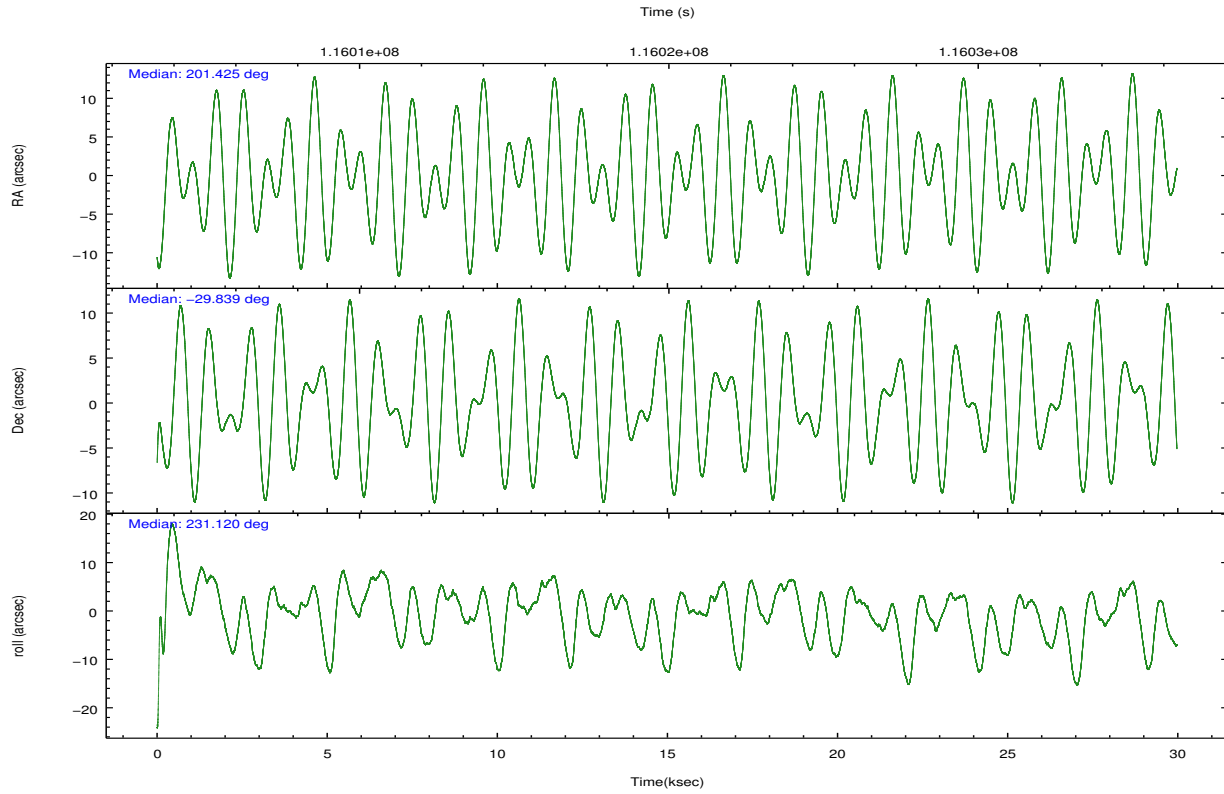
	ccd 2	ccd 3	ccd 5	ccd 6	ccd 7	ccd 8		ccd 2	ccd 3	ccd 5	ccd 6	ccd 7	ccd 8
level 1 events	107690	102982	194033	105945	133818	130673	grade 0 events	4753	4824	51767	5283	7684	7940
rejected events	95887	91317	74820	93301	72417	105673		4%	4%	26%	4%	5%	6%
rejected %	89%	88%	38%	88%	54%	80%	grade 1 events	31	31	425	27	139	60
								0%	0%	0%	0%	0%	0%
							grade 2 events	2369	2141	27929	2290	12648	5272
								2%	2%	14%	2%	9%	4%
							grade 3 events	1364	1360	3483	1378	6060	2799
								1%	1%	1%	1%	4%	2%
							grade 4 events	1360	1313	3354	1419	6021	2649
								1%	1%	1%	1%	4%	2%
							grade 5 events	3478	3695	10993	4112	12279	5188
								3%	3%	5%	3%	9%	3%
							grade 6 events	1998	2077	33157	2318	29241	6475
								1%	2%	17%	2%	21%	4%
							grade 7 events	92337	87541	62925	89118	59746	100290
								85%	85%	32%	84%	44%	76%

2.2 Compared Parameters

Parameter	Planned	Actual	Parameter	Planned	Actual
Instrument	ACIS	ACIS	Obspar format version number	7	7
Detector	ACIS-235678	ACIS-235678	Obspar file type	PREDICTED	ACTUAL
Grating	NONE	NONE	Obspar update status	NONE	UPDATED
Data mode	FAINT	FAINT	Number of optional ACIS chips dropped	0	0
Observation mode	POINTING	POINTING	On-chip summing requested	N	N
[deg] Pointing RA	201.428935	201.4244186474312	Subarray requested	CUSTOM	1/2
[deg] Pointing Dec	-29.812336	-29.83931861270233	Subarray start row	257	257
[deg] Pointing Roll	230.968277	231.1226501392646	Subarray row count	512	512
[mm] SIM focus pos	-0.684267	-0.6828225247311905	Alternating exposures requested	N	N
[mm] SIM defocus	0	0.001444936568705701	[s] Primary exposure time	0.000000	1.8
[mm] SIM translation stage pos	-190.132523	-190.1425803651734			
[mm] SIM translation stage offset	0	0.01005778216563158			
[s] Observation start time (MET)	116005227.184000	116004220.74208			
Observation start date	2001-09-04T15:39:23	2001-09-04T15:23:40			
[s] Observation end time (MET)	116034927.184000	116035118.8558			
Observation end date	2001-09-04T23:54:23	2001-09-04T23:58:38			
Read mode	TIMED	TIMED			

2.3 Aspect



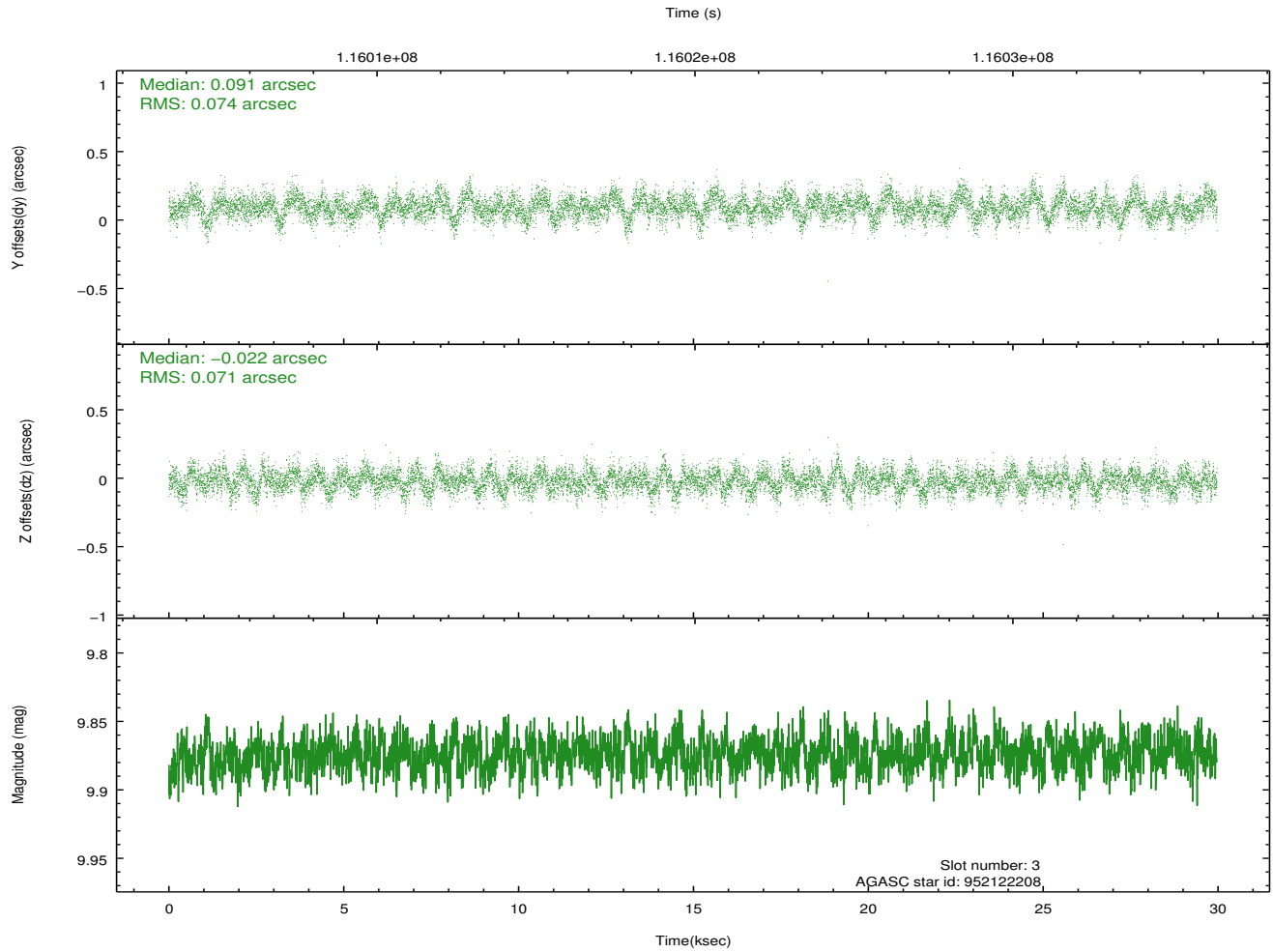
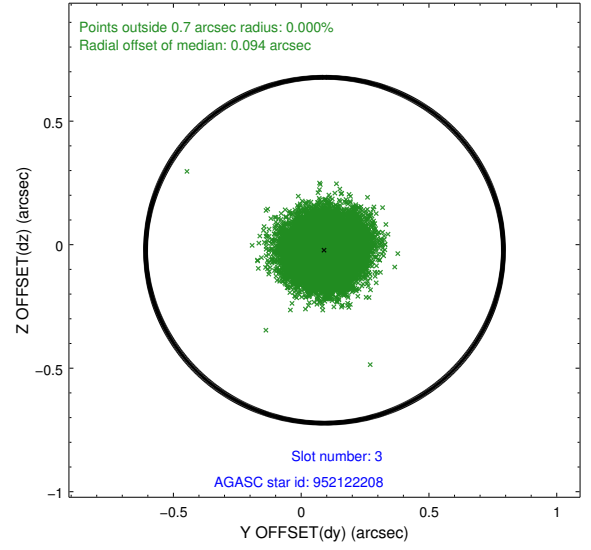
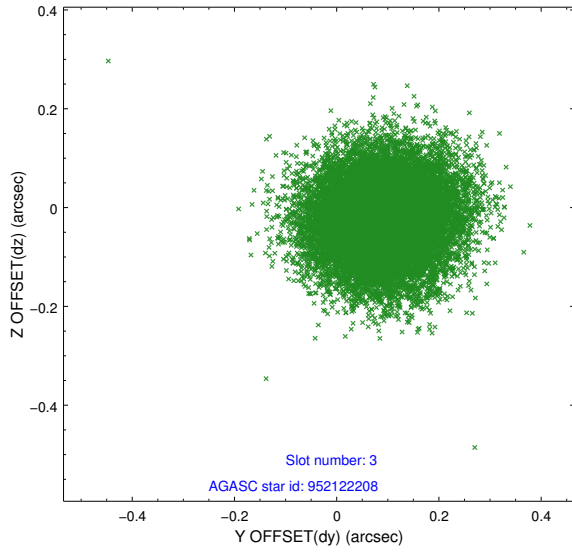


Slot Statistics

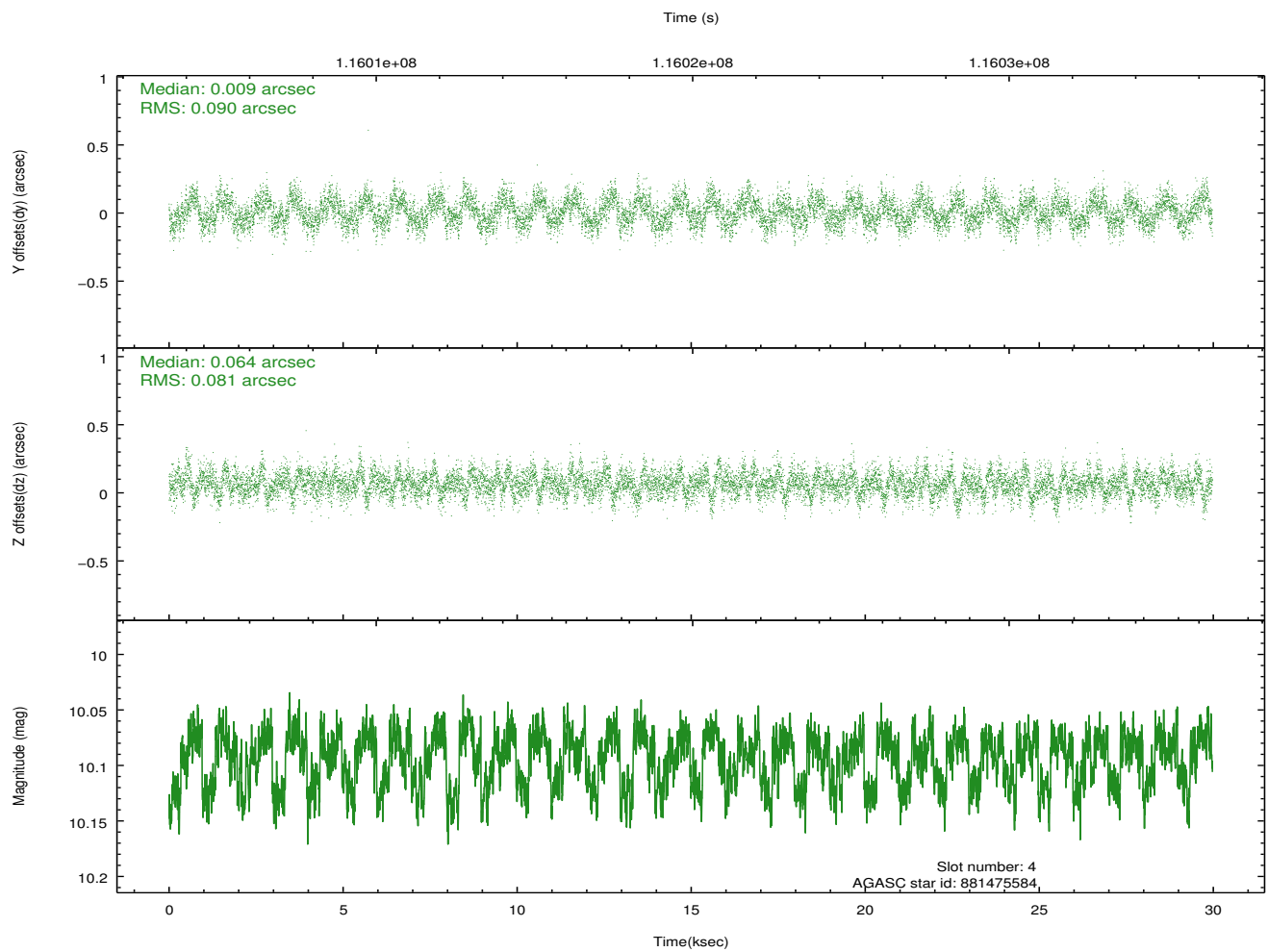
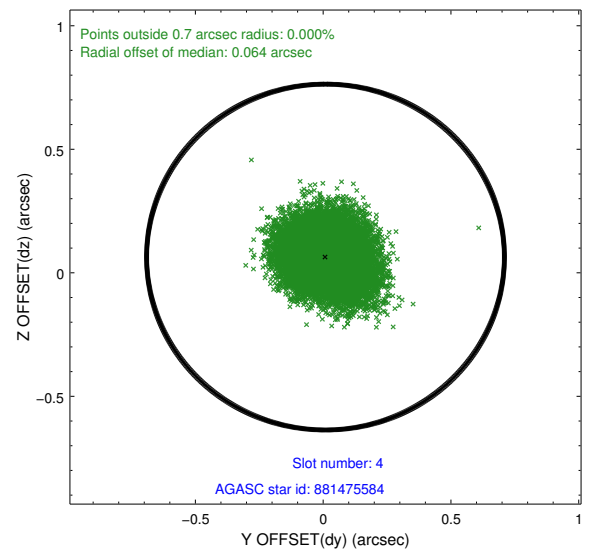
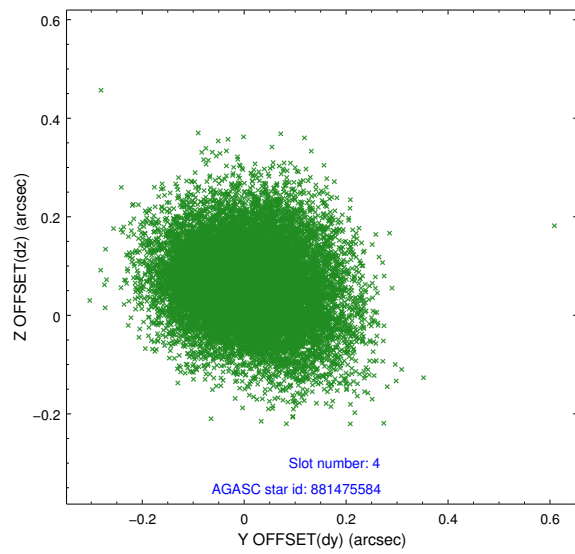
slot	status	id	mag	n_pts	med_dy	med_dz	dr1	dr2	ra	dec	mean_y	mean_z
0	FID	ACIS-S-2	7.11	7311	-0.003	-0.003	0.013	0.023	0.000000	0.000000	-754.46	-1727.91
1	FID	ACIS-S-4	7.20	7310	-0.033	0.003	0.008	0.015	0.000000	0.000000	2158.73	180.53
2	FID	ACIS-S-6	7.35	7310	0.009	0.007	0.011	0.016	0.000000	0.000000	407.60	818.00
3	GUIDE	952122208	9.87	14611	0.091	-0.022	0.110	0.176	201.343686	-30.353824	1682.12	1022.36
4	GUIDE	881475584	10.09	14605	0.009	0.064	0.130	0.208	201.917743	-29.899274	-714.08	1384.57
5	GUIDE	881470136	10.18	14615	-0.149	0.116	0.176	0.282	202.034493	-29.631398	-1694.77	1065.40
6	GUIDE	881470320	10.49	14601	0.087	-0.126	0.170	0.277	201.172645	-29.544874	-240.82	-1229.06
7	GUIDE	881472720	10.15	14605	-0.051	-0.032	0.140	0.231	202.043651	-29.417662	-2312.84	605.97

2.4 Star Slots

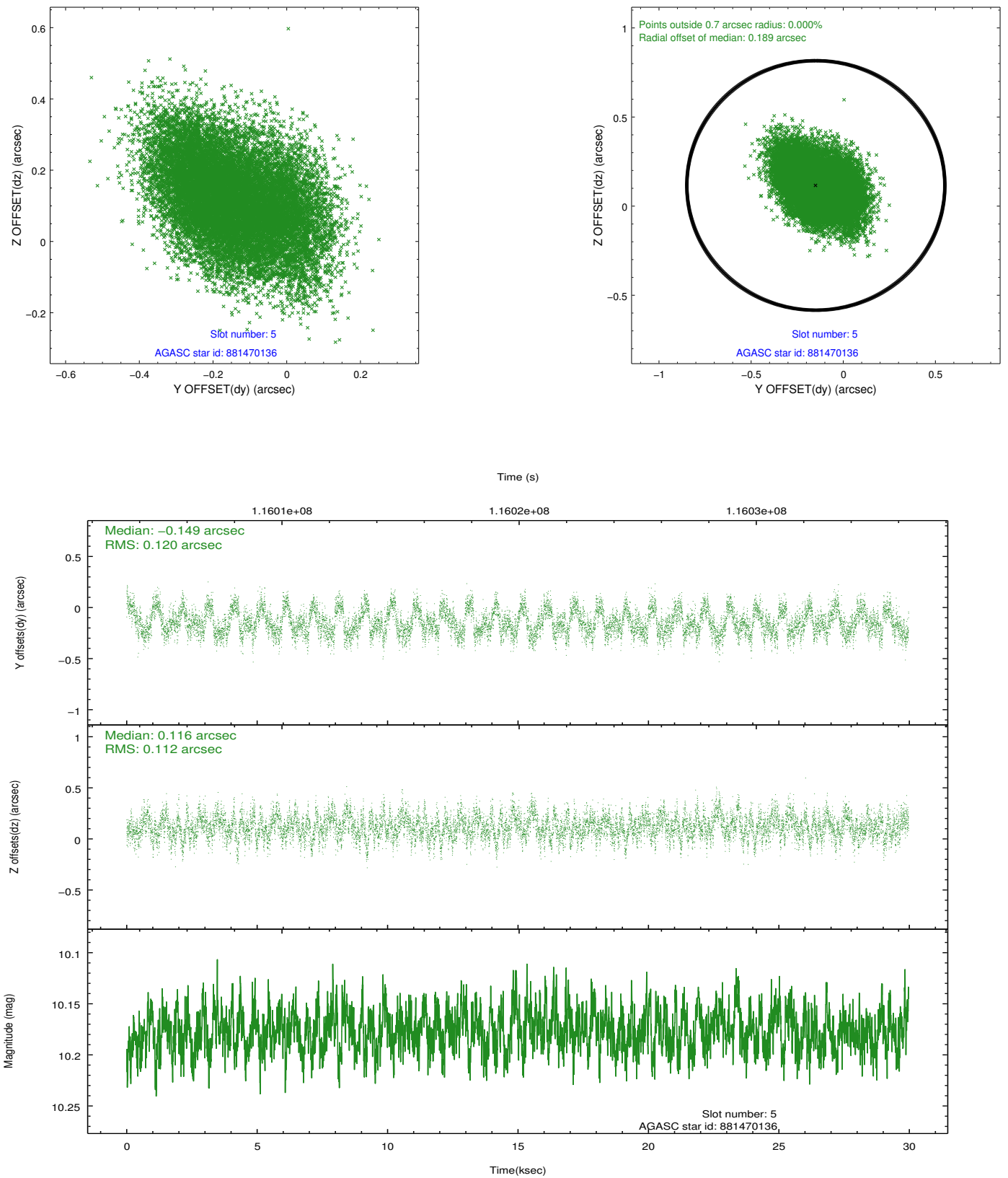
2.4.1 Slot 3



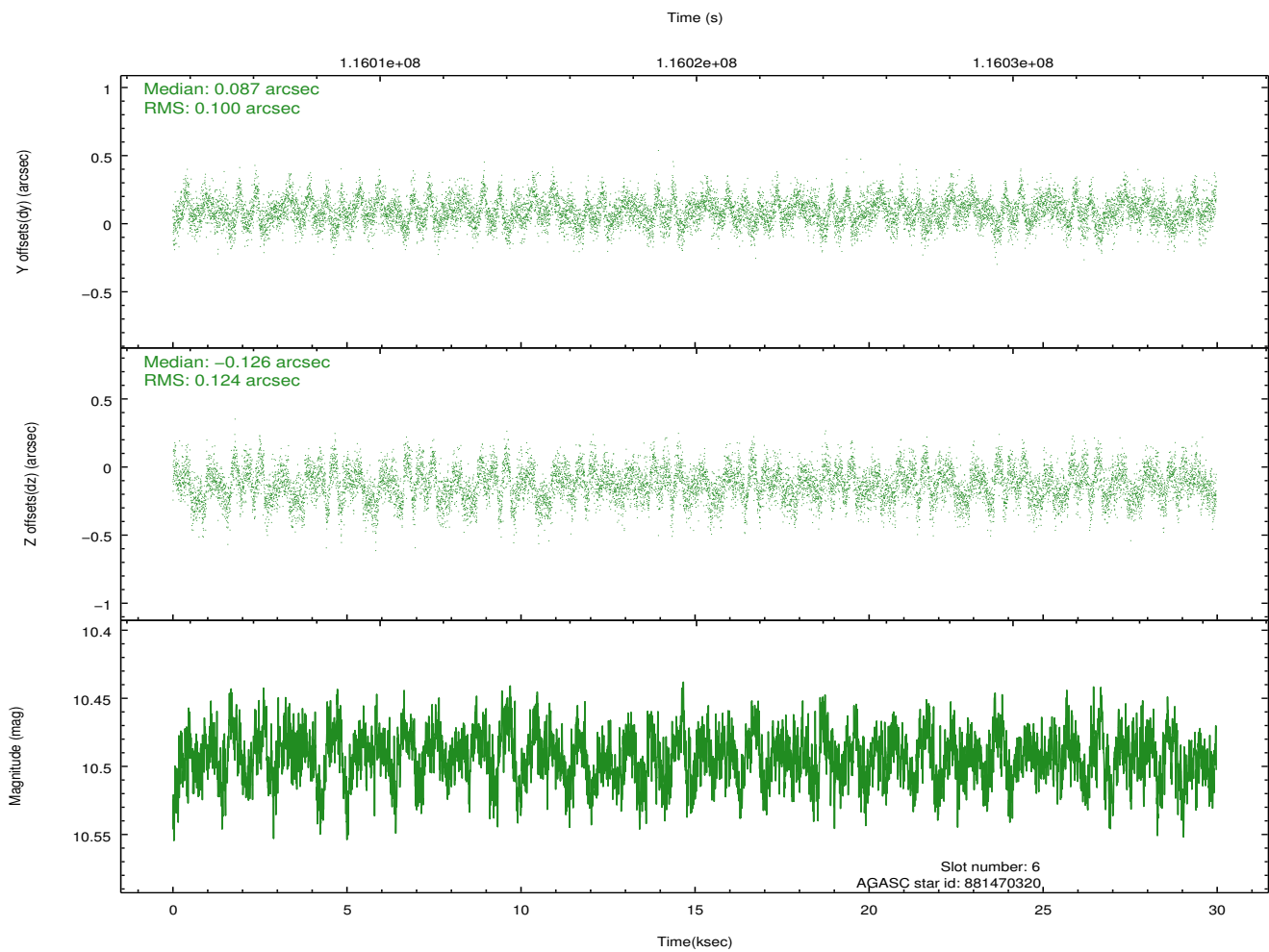
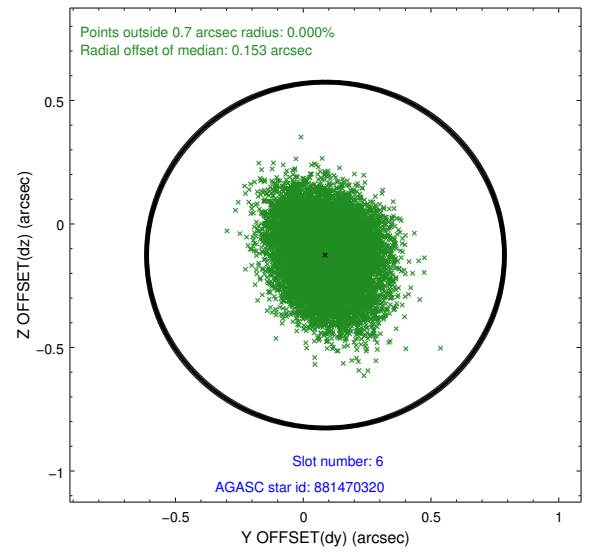
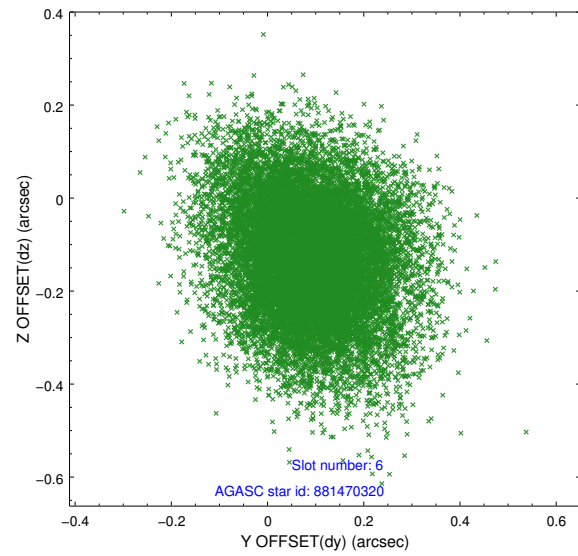
2.4.2 Slot 4



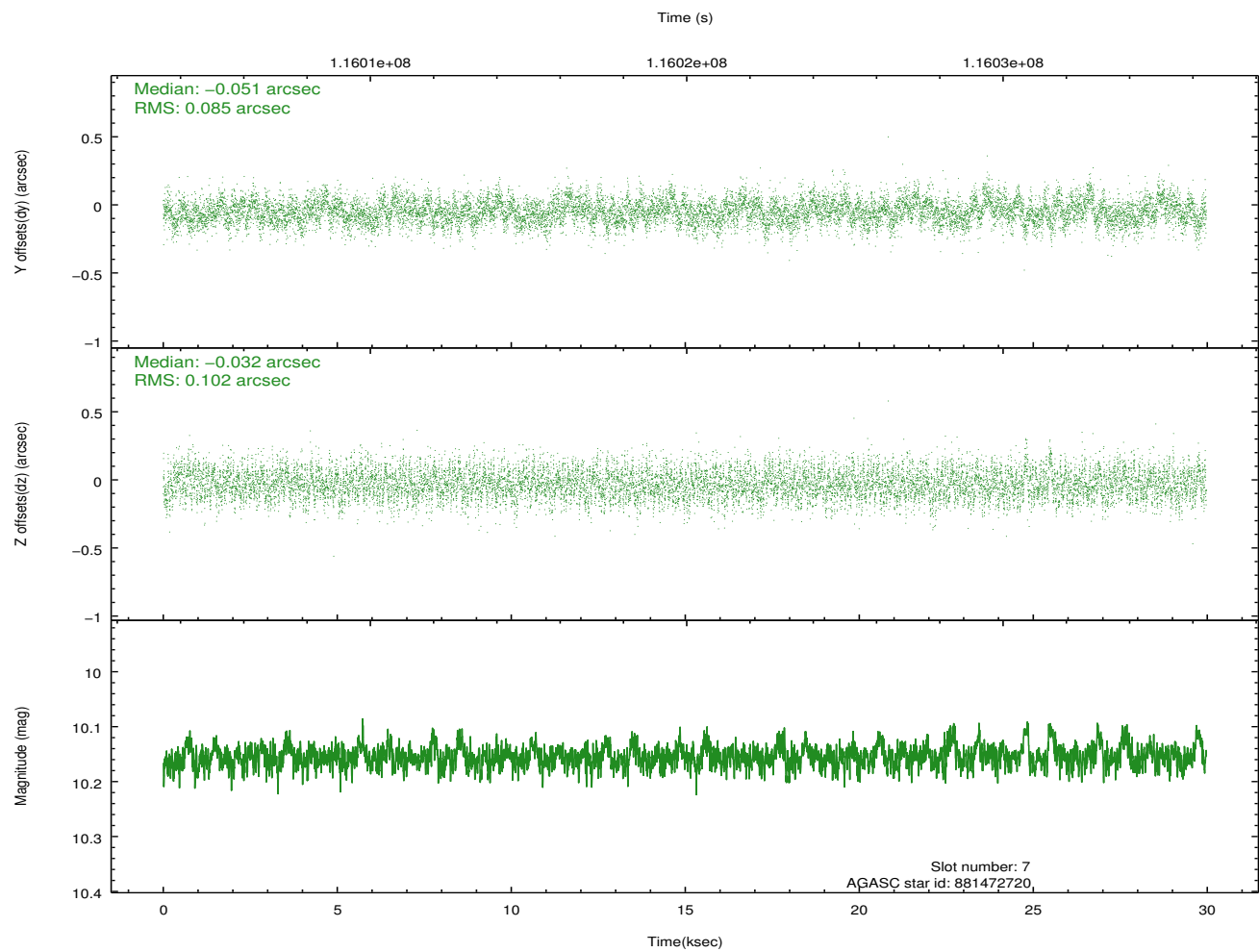
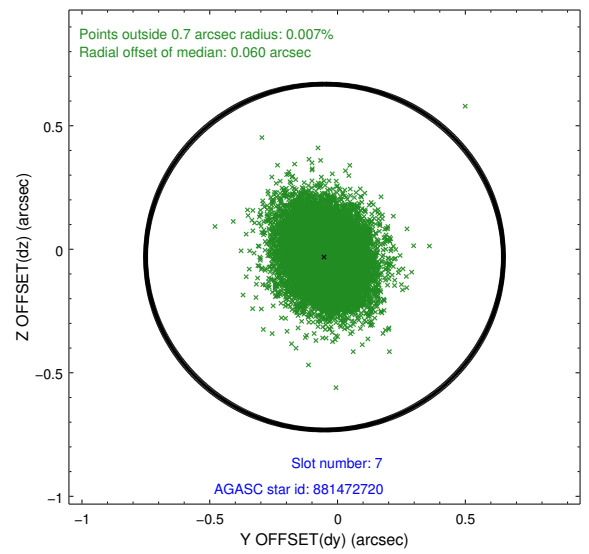
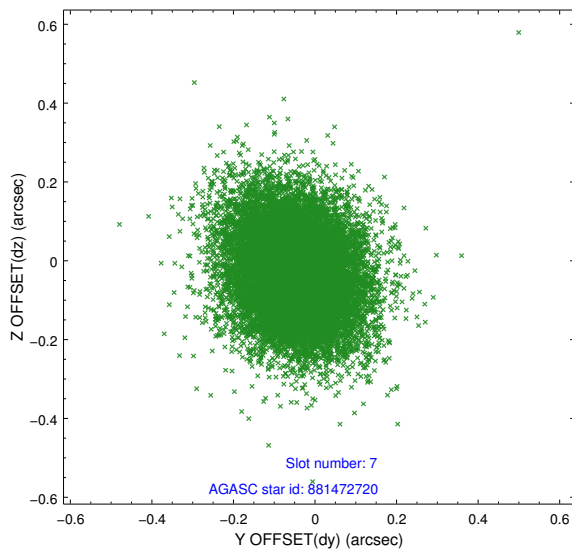
2.4.3 Slot 5



2.4.4 Slot 6

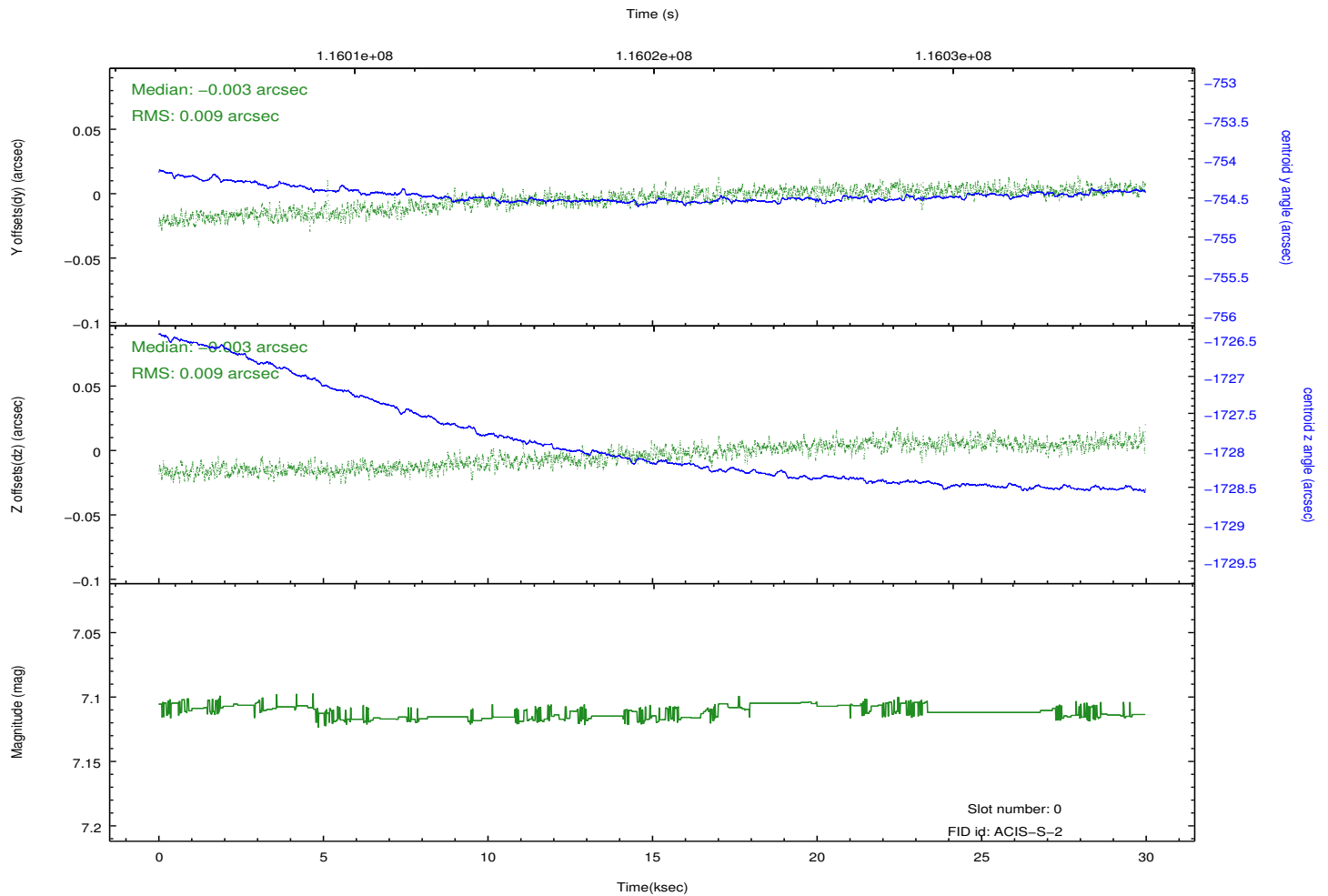
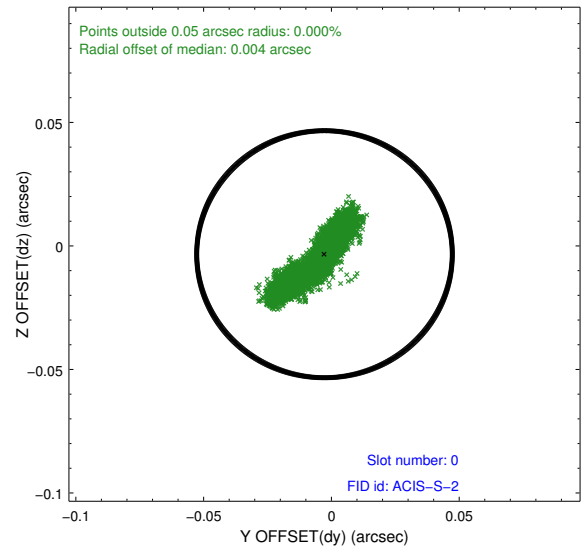
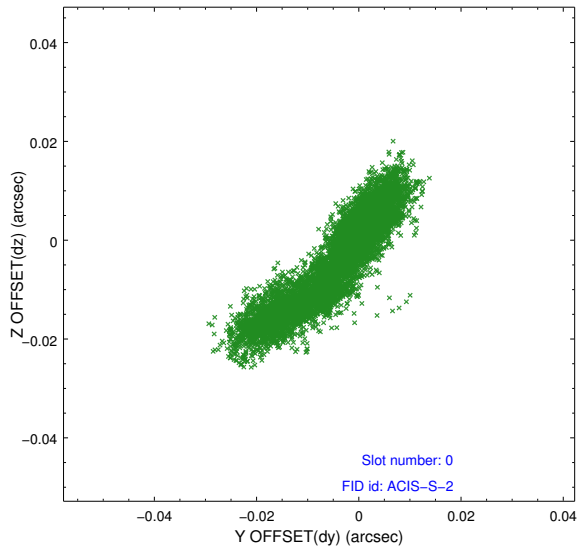


2.4.5 Slot 7

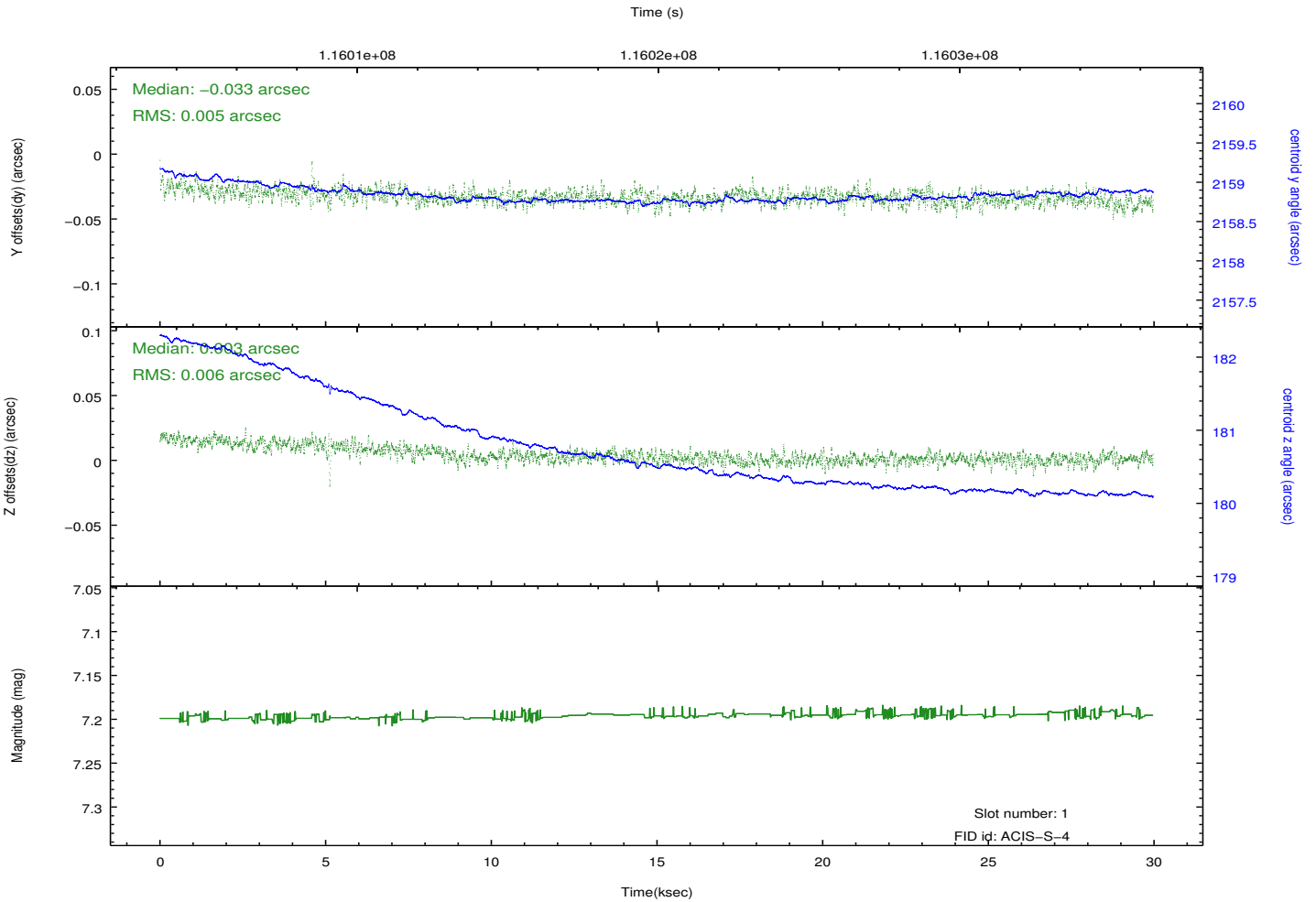
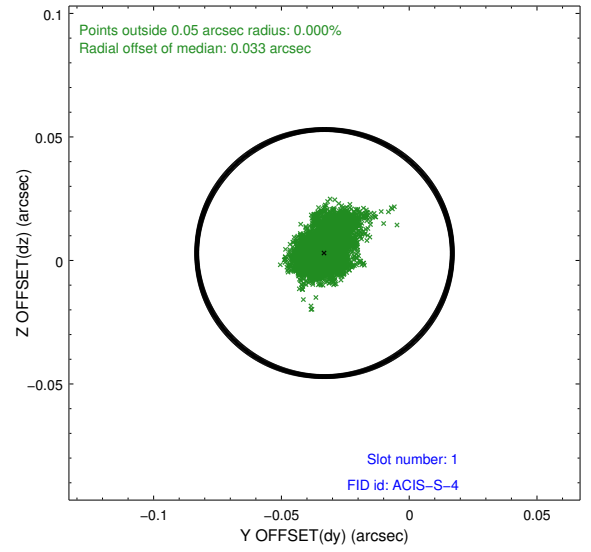
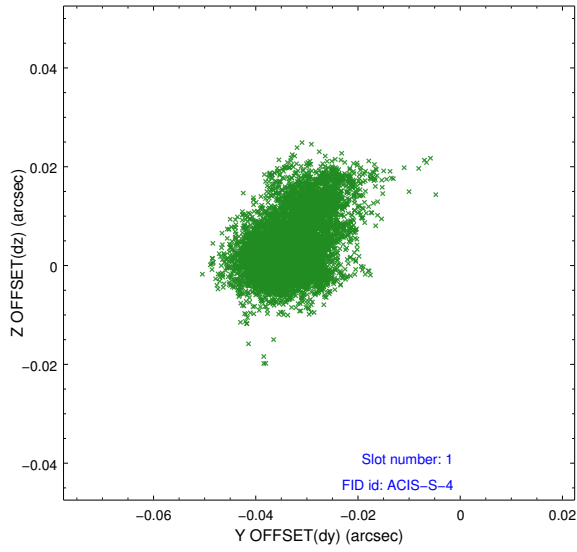


2.5 FID Slots

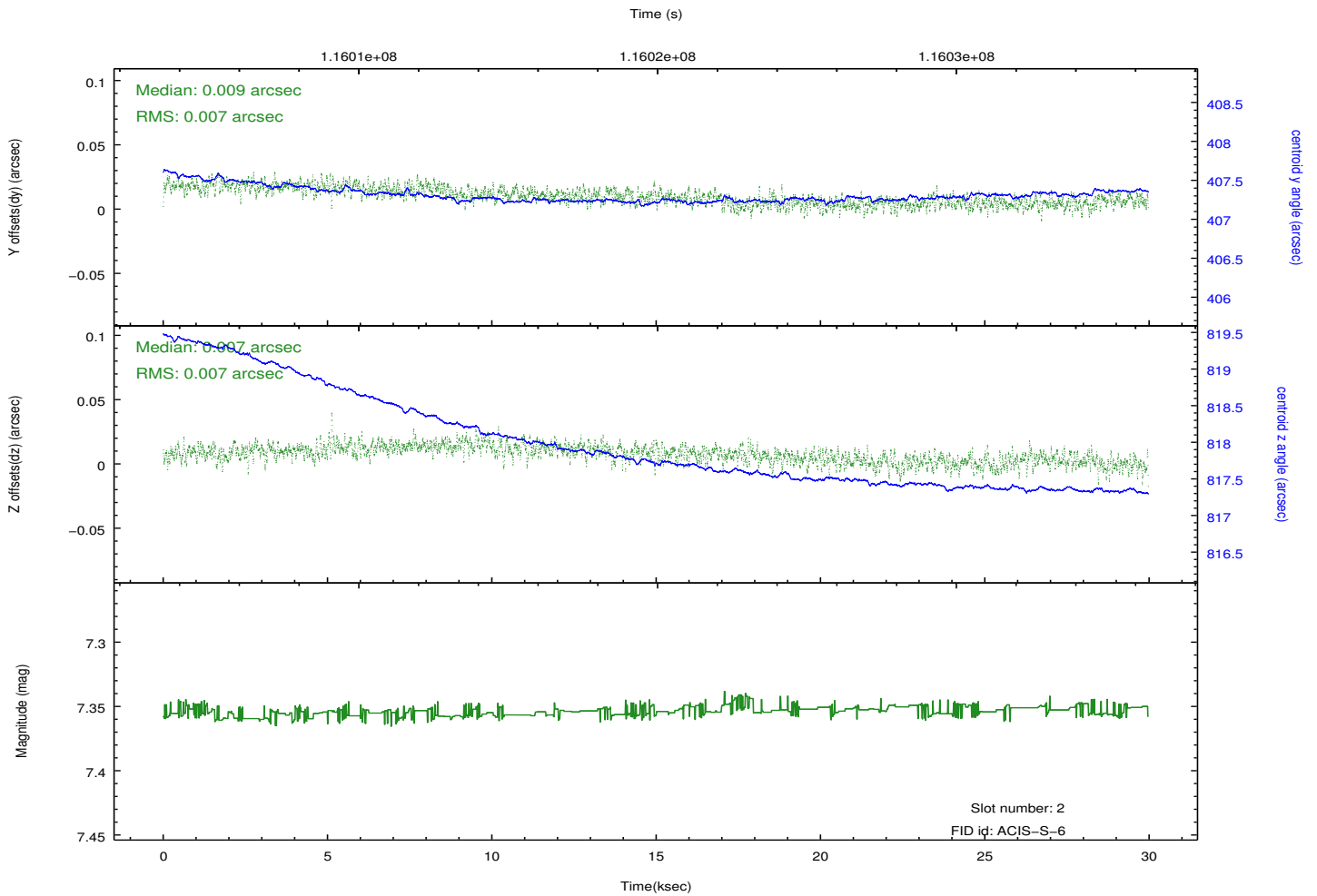
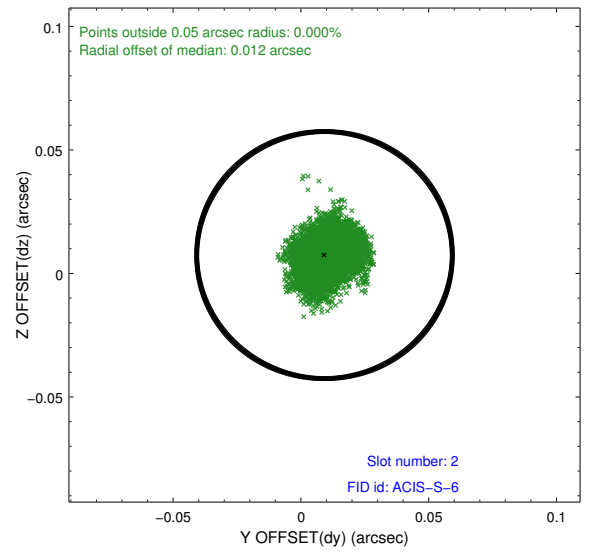
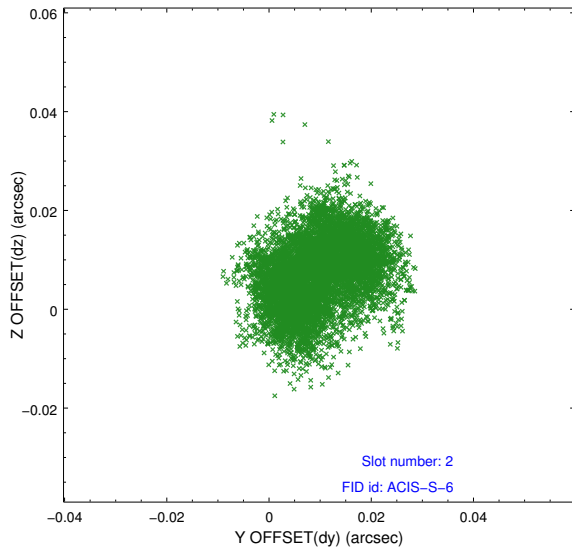
2.5.1 Slot 0



2.5.2 Slot 1



2.5.3 Slot 2



A Summary

A.1 Status

V&V Scientist	Jen Lauer
V&V Date (YYYY-MM-DD)	2012.09.26
V&V Edition	1
V&V Disposition and Status	OK
V&V Charge Time	29.97

A.2 Comments