

V&V Reference Report

L2 ASCDS Version : 8.4.5

Observation 2197 - L2 Version 3
Chandra X-Ray Center

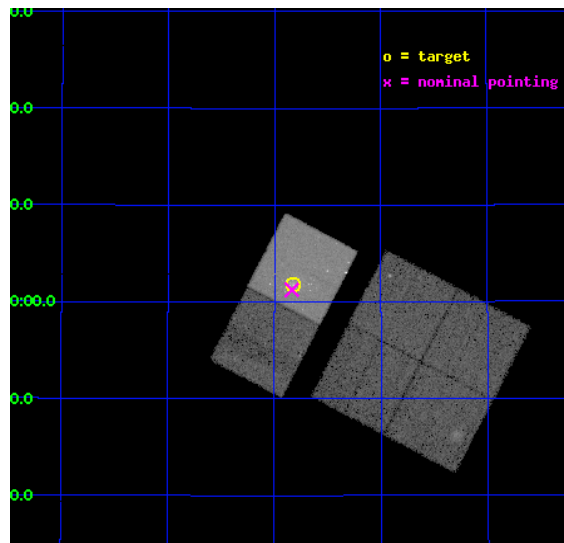
L2 Processing Date : Sep 23 2012

Contents

1	Front	2
2	OBI	3
2.1	OBI	3
2.1.1	Images	3
2.1.2	Bias	3
2.1.3	Parameters	4
2.1.4	Events	4
2.2	Compared Parameters	5
2.3	Aspect	6
2.4	Star Slots	9
2.4.1	Slot 3	9
2.4.2	Slot 4	10
2.4.3	Slot 5	11
2.4.4	Slot 6	12
2.4.5	Slot 7	13
2.5	FID Slots	14
2.5.1	Slot 0	14
2.5.2	Slot 1	15
2.5.3	Slot 2	16
A	Summary	17
A.1	Status	17
A.2	Comments	17

1 Front

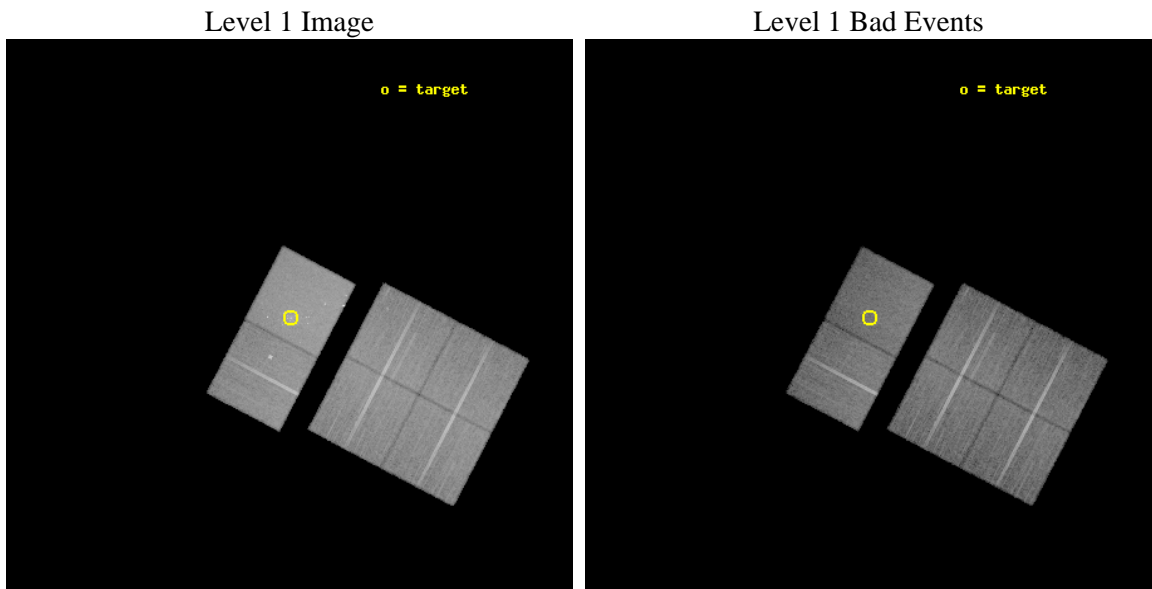
seq_num	700387	Sequence number
obs_id	2197	Observation id
title	CHANDRA OBSERVATIONS OF NEARBY LLAGN: STARBURSTS OR AGNS ?	Proposa
observer	Dr Andreas Zezas	Principal investigator
object	NGC 5055	Source name
dtycycle	0	
cycle	P	events from which exps? Prim/Second/Both
ra_targ	198.955	Observer's specified target RA [deg]
dec_targ	42.030278	Observer's specified target Dec [deg]
ra_nom	198.95893220804	Nominal RA [deg]
dec_nom	42.020976054469	Nominal Dec [deg]
roll_nom	297.63639903448	Nominal Roll [deg]
revision	3	Processing version of data
ontime	28354.630162716	Sum of GTIs [s]
livetime	27995.586762487	Livetime [s]
ontime0	28351.430272371	Sum of GTIs [s]
ontime1	28351.225072369	Sum of GTIs [s]
ontime2	28348.025102302	Sum of GTIs [s]
ontime3	28354.548082724	Sum of GTIs [s]
ontime6	28348.107232109	Sum of GTIs [s]
ontime7	28354.630162716	Sum of GTIs [s]
l2events	206850	Number of level 2 events



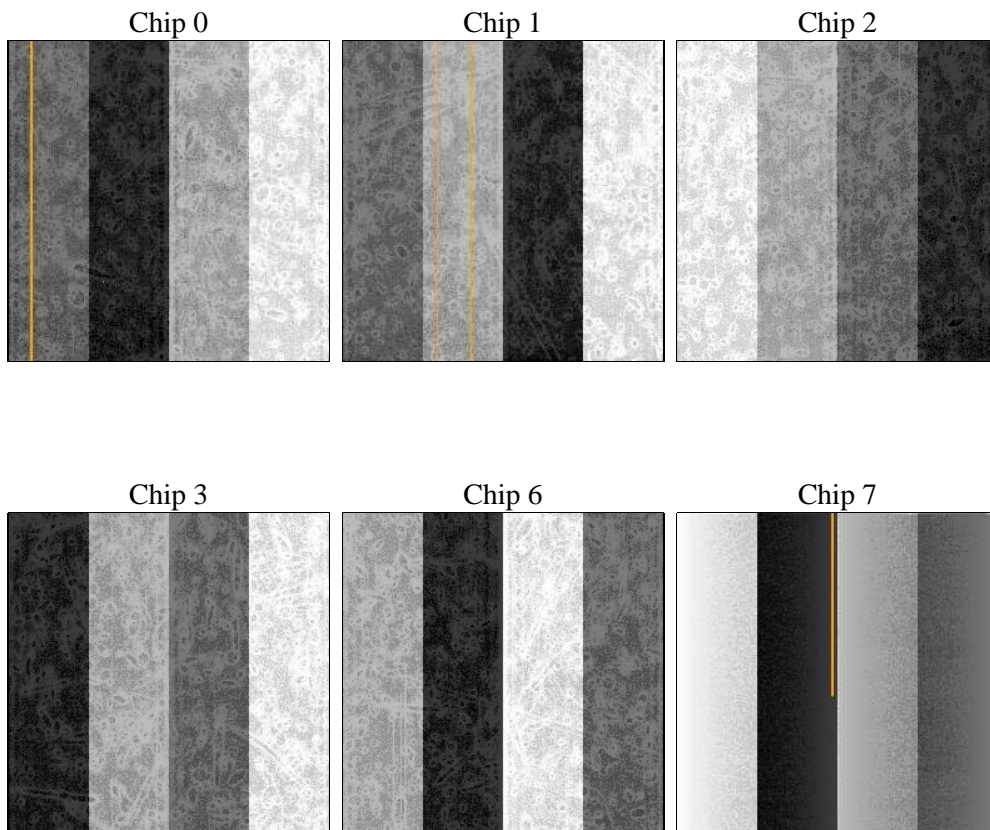
2 OBI

2.1 OBI

2.1.1 Images



2.1.2 Bias



2.1.3 Parameters

obi_num	0	Obi number	sched_exp_time	28405.000000	[s] Scheduled observation exposure time
ascdsver	8.4.5	Processing system revision	ontime	28354.630162716	Sum of GTIs [s]
caldbver	4.5.1.1	 	ontime0	28351.430272371	Sum of GTIs [s]
date	2012-09-23T08:17:40	Date and time of file creation	ontime1	28351.225072369	Sum of GTIs [s]
revision	3	Processing version of data	ontime2	28348.025102302	Sum of GTIs [s]
			ontime3	28354.548082724	Sum of GTIs [s]
			ontime6	28348.107232109	Sum of GTIs [s]
			ontime7	28354.630162716	Sum of GTIs [s]
			l1events	1132782	Number of level 1 events

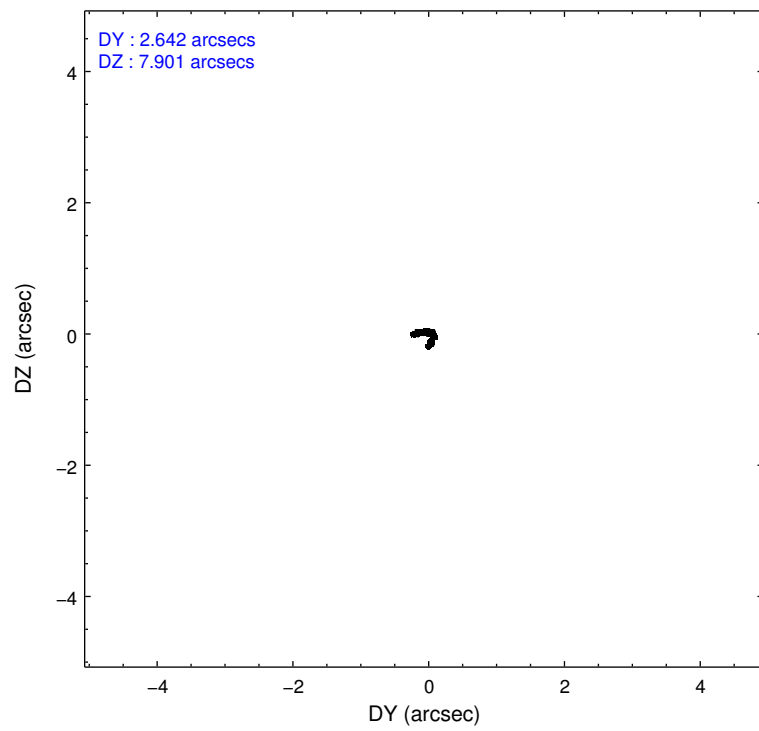
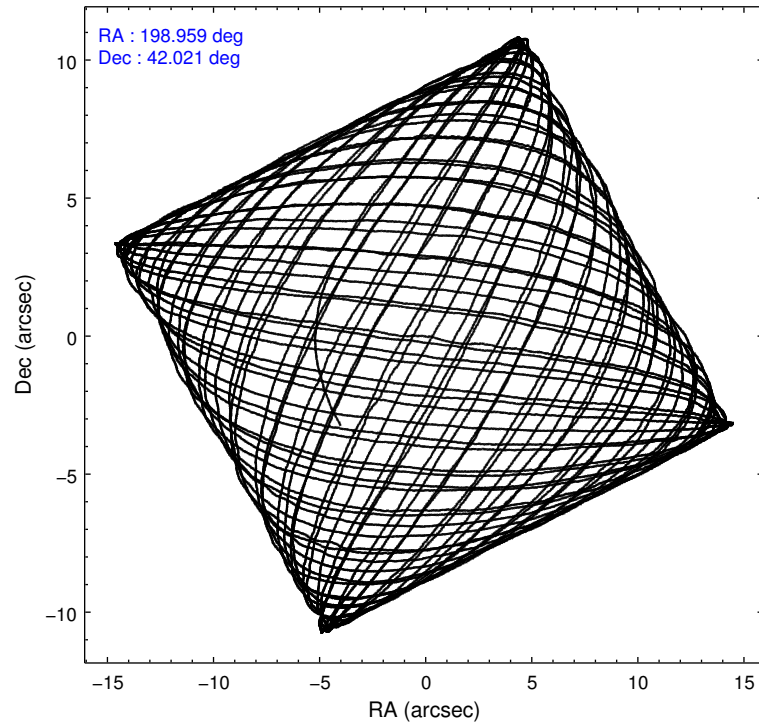
2.1.4 Events

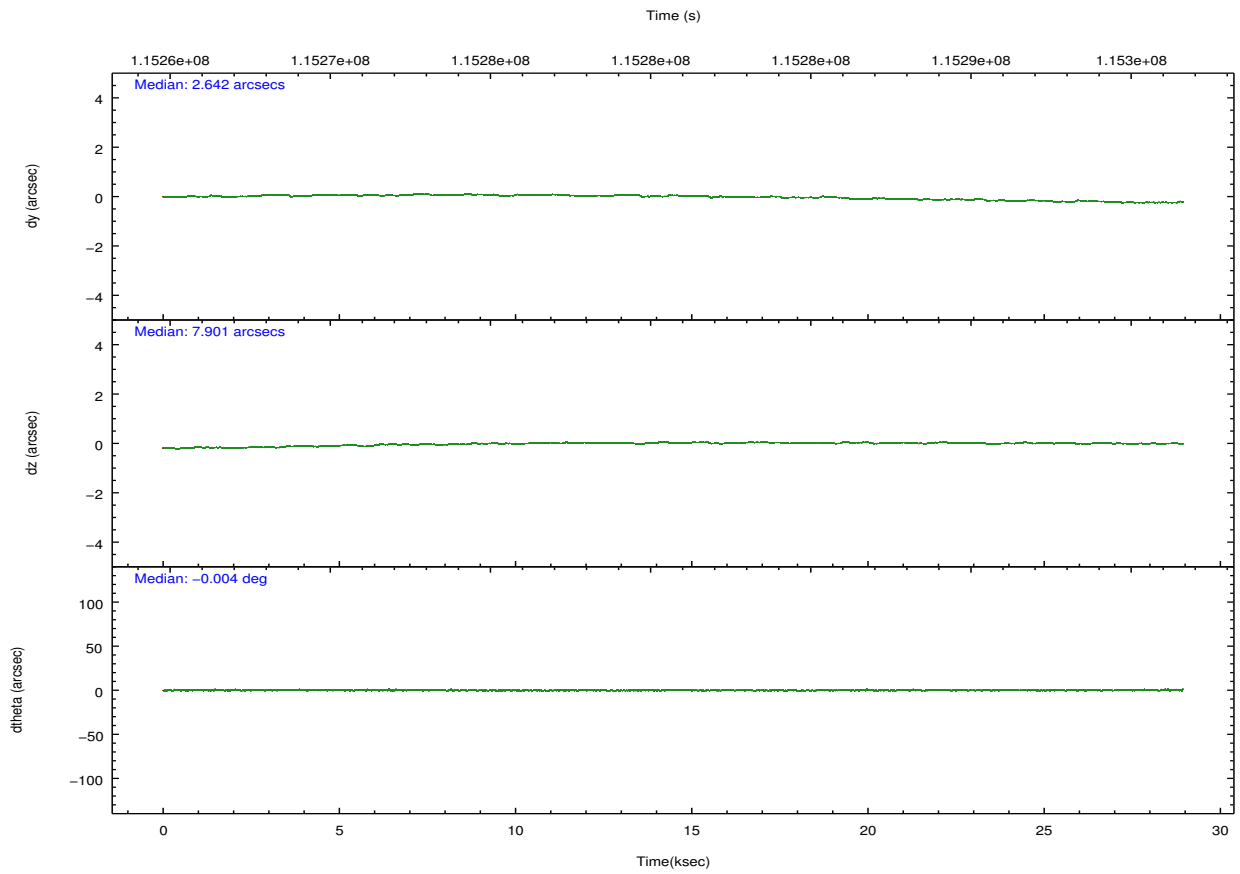
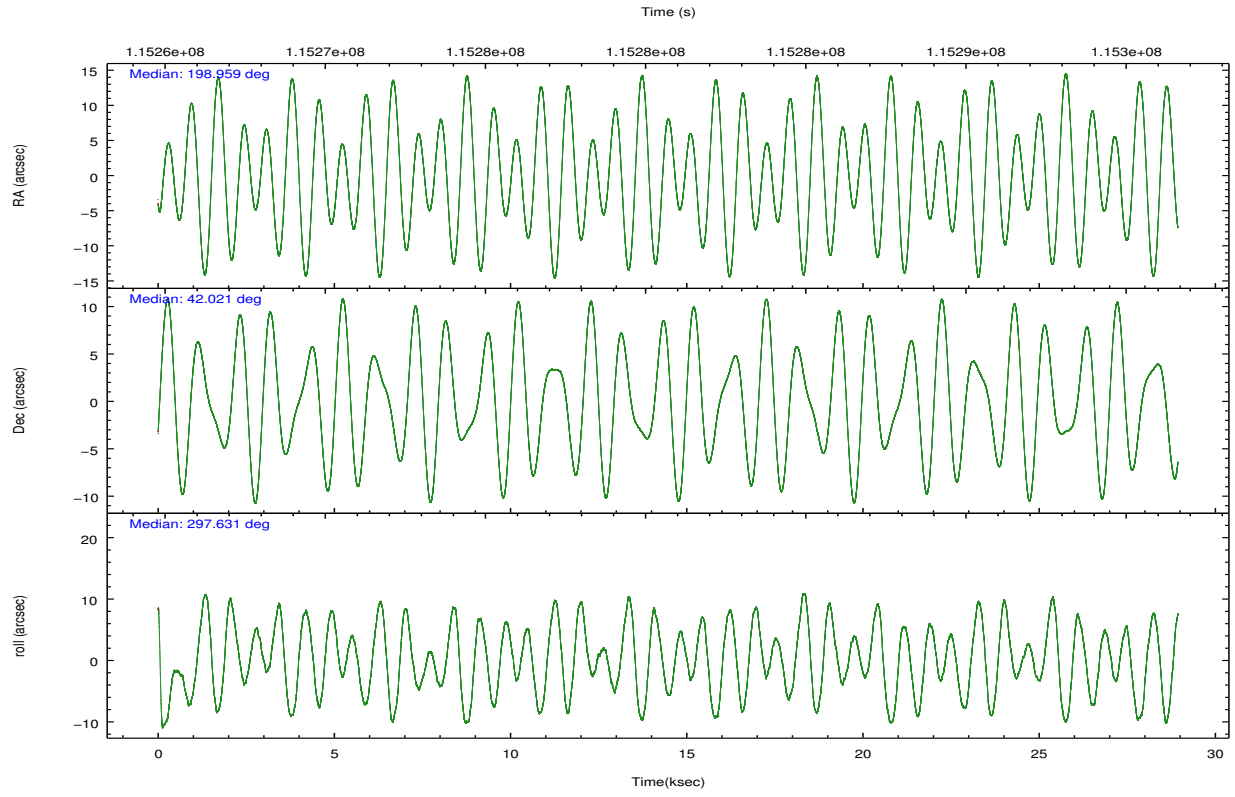
	ccd 0	ccd 1	ccd 2	ccd 3	ccd 6	ccd 7		ccd 0	ccd 1	ccd 2	ccd 3	ccd 6	ccd 7
level 1 events	172499	165758	182713	181523	188188	242101	grade 0 events	10322	9740	9655	9643	11893	13722
rejected events	148482	142051	160196	158935	162509	132399		5%	5%	5%	5%	6%	5%
rejected %	86%	85%	87%	87%	86%	54%	grade 1 events	86	105	87	75	122	238
								0%	0%	0%	0%	0%	0%
							grade 2 events	5285	5144	5018	4853	5149	22213
								3%	3%	2%	2%	2%	9%
							grade 3 events	2148	2251	1916	1996	2116	10039
								1%	1%	1%	1%	1%	4%
							grade 4 events	2052	2222	2024	1991	2018	10226
								1%	1%	1%	1%	1%	4%
							grade 5 events	6546	6549	5978	7014	7609	22219
								3%	3%	3%	3%	4%	9%
							grade 6 events	4215	4355	3908	4107	4507	53512
								2%	2%	2%	2%	2%	22%
							grade 7 events	141845	135392	154127	151844	154774	109932
								82%	81%	84%	83%	82%	45%

2.2 Compared Parameters

Parameter	Planned	Actual	Parameter	Planned	Actual
Instrument	ACIS	ACIS	Obspar format version number	7	7
Detector	ACIS-012367	ACIS-012367	Obspar file type	PREDICTED	ACTUAL
Grating	NONE	NONE	Obspar update status	NONE	UPDATED
Data mode	FAINT	FAINT	Number of optional ACIS chips dropped	0	0
Observation mode	POINTING	POINTING	On-chip summing requested	N	N
[deg] Pointing RA	198.927693	198.9589322080417	Subarray requested	NONE	NONE
[deg] Pointing Dec	42.035317	42.02097605446931	Alternating exposures requested	N	N
[deg] Pointing Roll	297.500683	297.6363990344759	[s] Primary exposure time	0.000000	3.2
[mm] SIM focus pos	-0.684267	-0.6828225247311905			
[mm] SIM defocus	0	0.001444936568705701			
[mm] SIM translation stage pos	-190.132523	-190.1400660498719			
[mm] SIM translation stage offset	0	0.00754346686406393			
[s] Observation start time (MET)	115266764.184000	115265628.2629			
Observation start date	2001-08-27T02:31:40	2001-08-27T02:13:48			
[s] Observation end time (MET)	115295169.184000	115295475.75158			
Observation end date	2001-08-27T10:25:05	2001-08-27T10:31:15			
Read mode	TIMED	TIMED			

2.3 Aspect



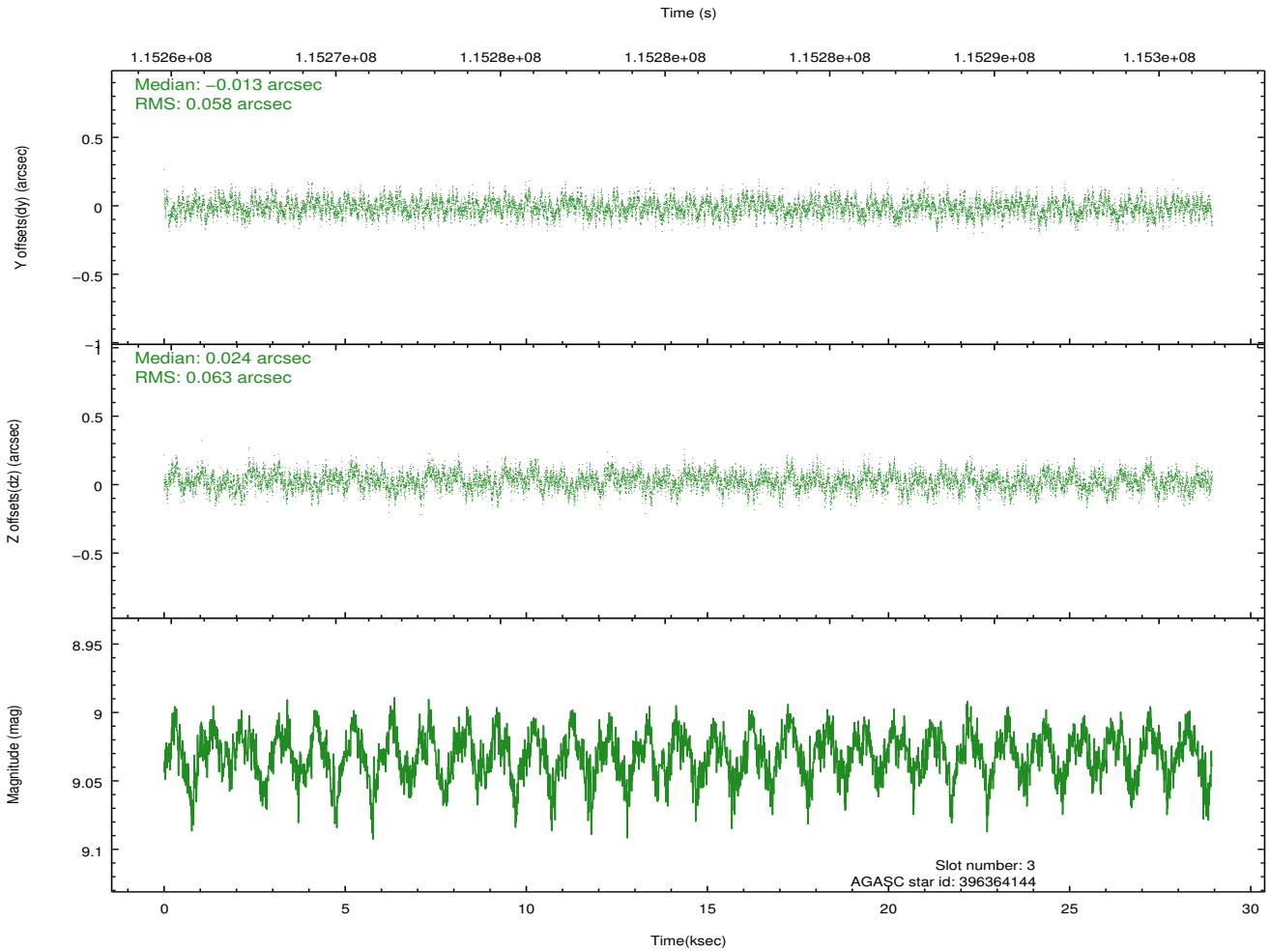
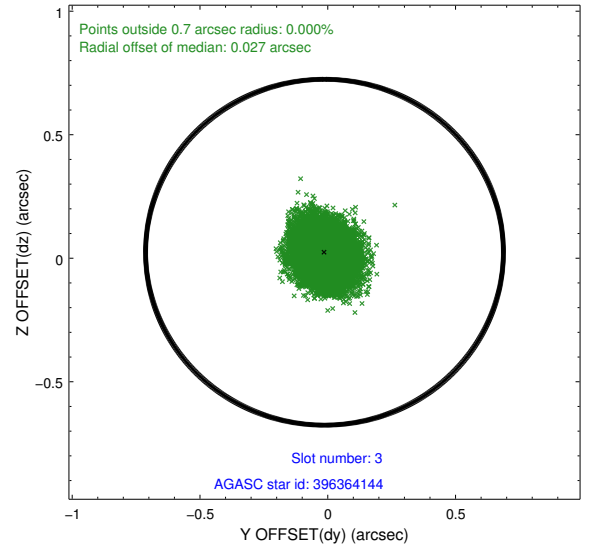
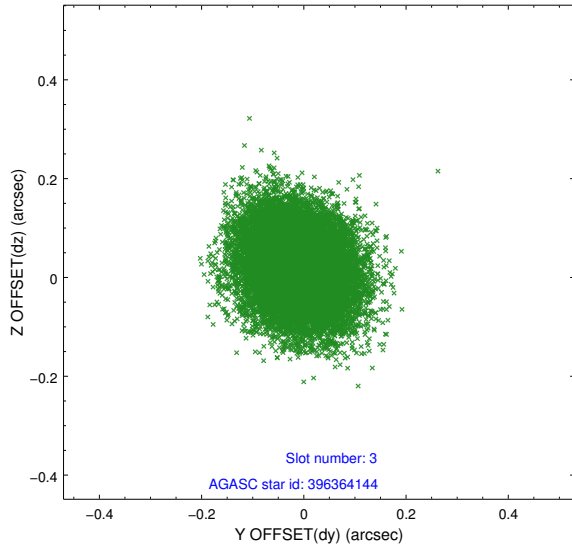


Slot Statistics

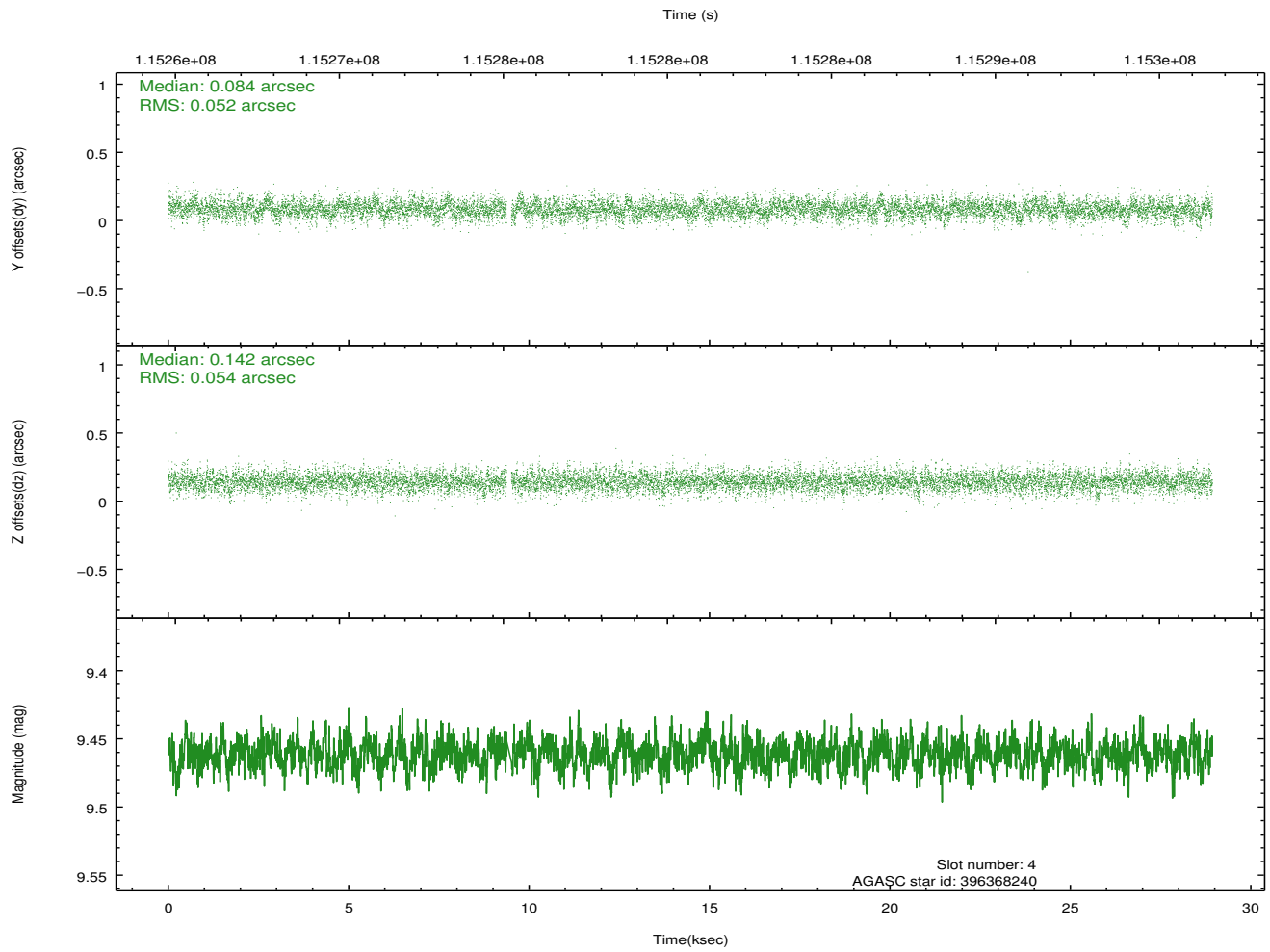
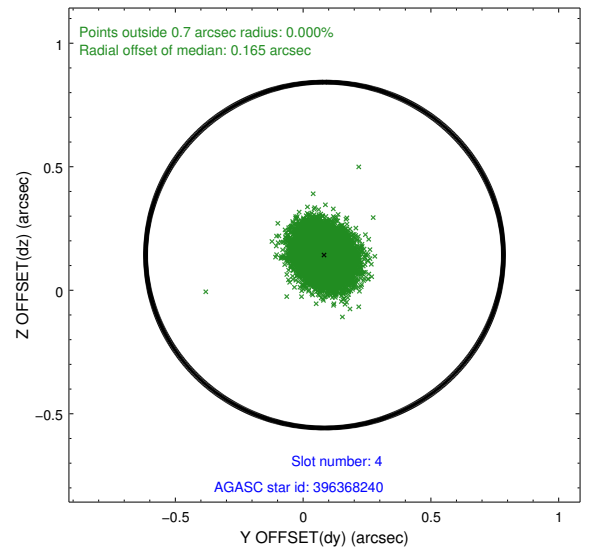
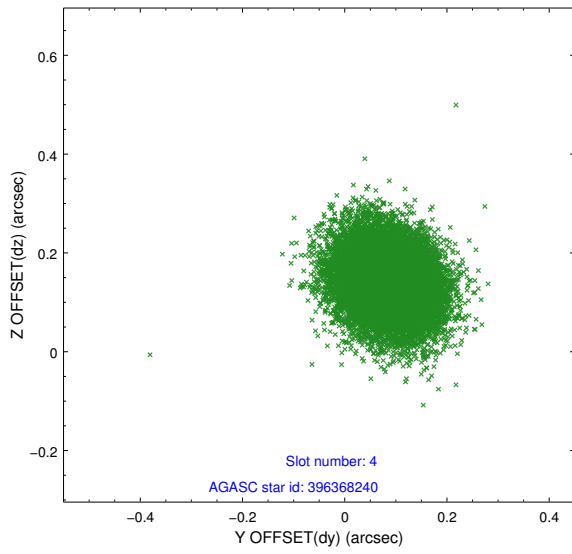
slot	status	id	mag	n_pts	med_dy	med_dz	dr1	dr2	ra	dec	mean_y	mean_z
0	FID	ACIS-S-2	7.11	7056	-0.006	-0.011	0.007	0.011	0.000000	0.000000	-755.25	-1729.07
1	FID	ACIS-S-4	7.19	7056	-0.049	0.006	0.007	0.012	0.000000	0.000000	2157.95	179.33
2	FID	ACIS-S-5	7.24	7055	0.024	0.014	0.007	0.012	0.000000	0.000000	-1807.95	173.12
3	GUIDE	396364144	9.03	14105	-0.013	0.024	0.092	0.148	199.529559	42.014737	804.13	1396.63
4	GUIDE	396368240	9.46	14043	0.084	0.142	0.080	0.130	198.875831	42.053711	-122.49	-91.97
5	GUIDE	396368544	7.53	14113	-0.166	-0.153	0.056	0.089	198.799211	42.266539	-896.57	80.82
6	GUIDE	396369152	9.89	14109	0.090	0.045	0.133	0.217	199.790482	41.802601	1802.00	1672.73
7	GUIDE	396374576	10.02	14099	0.006	-0.054	0.113	0.181	199.155228	41.489032	2027.42	-362.99

2.4 Star Slots

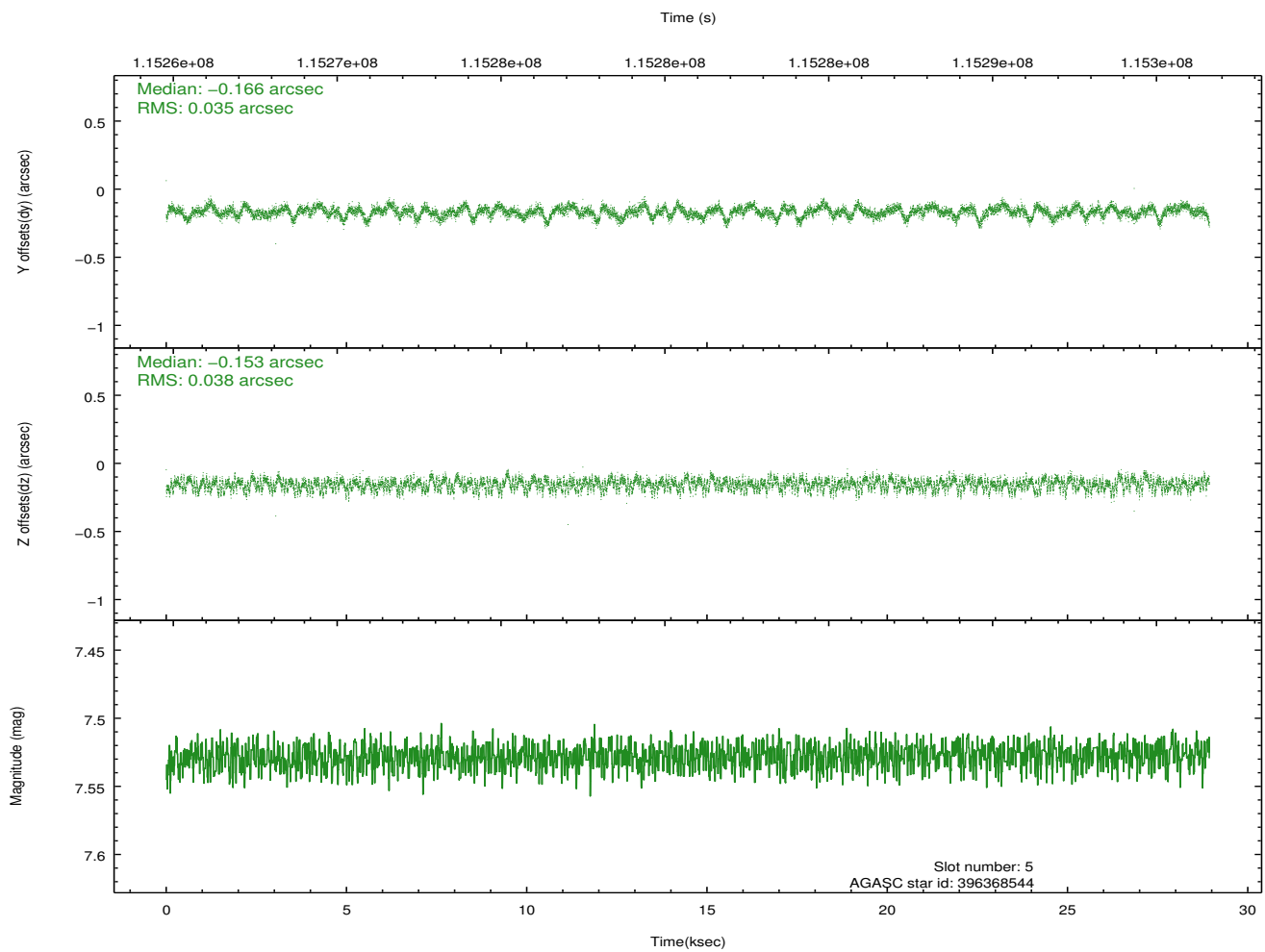
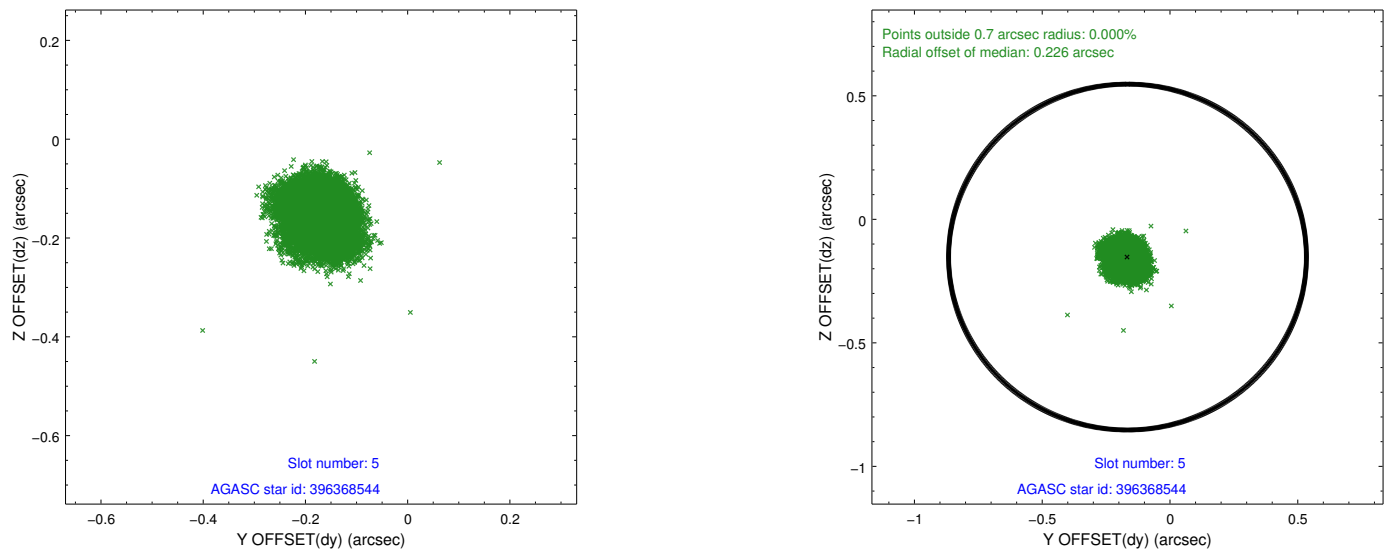
2.4.1 Slot 3



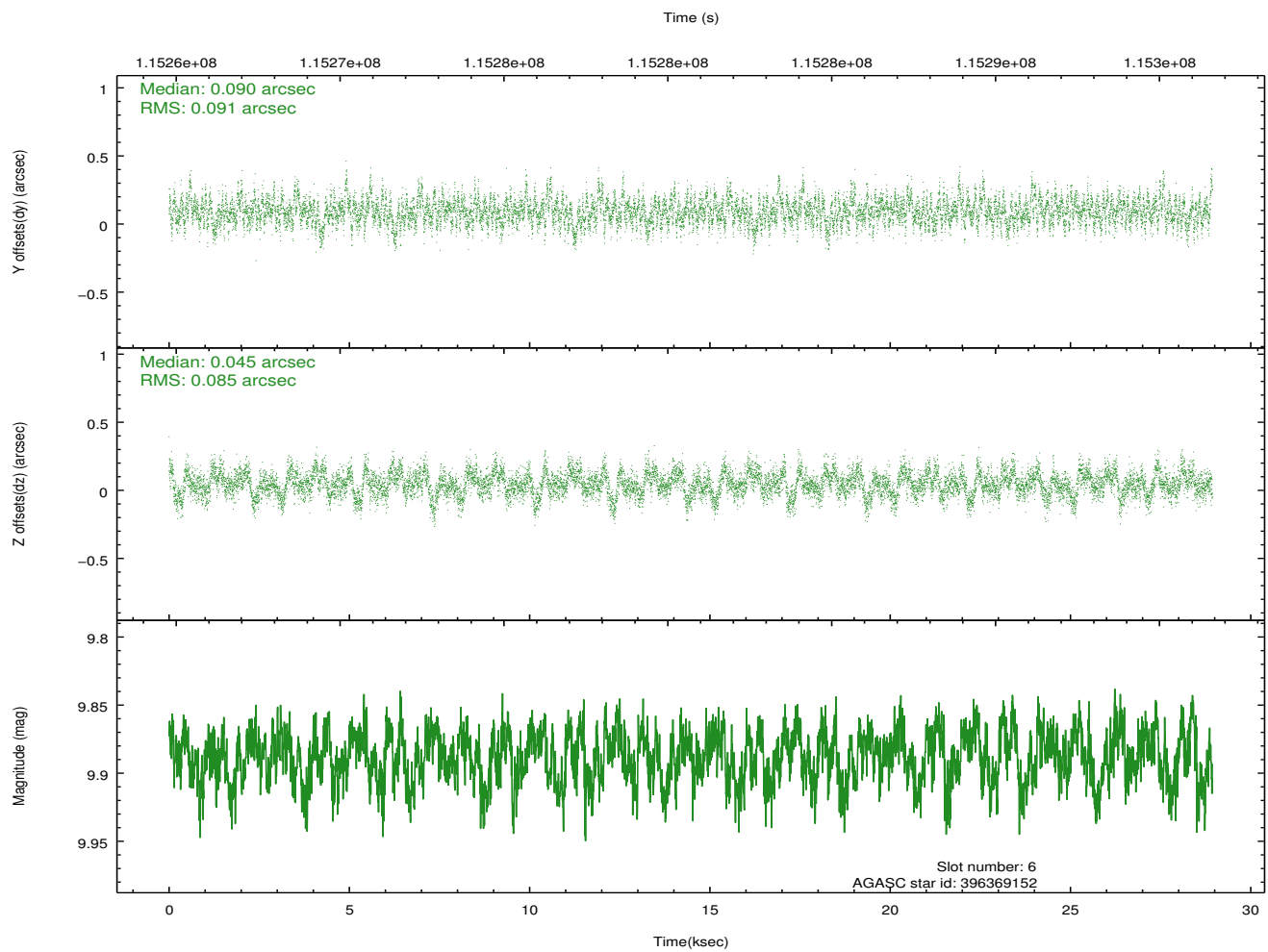
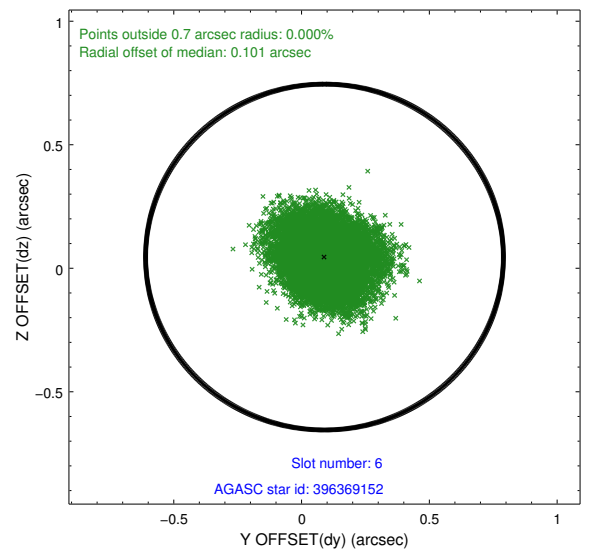
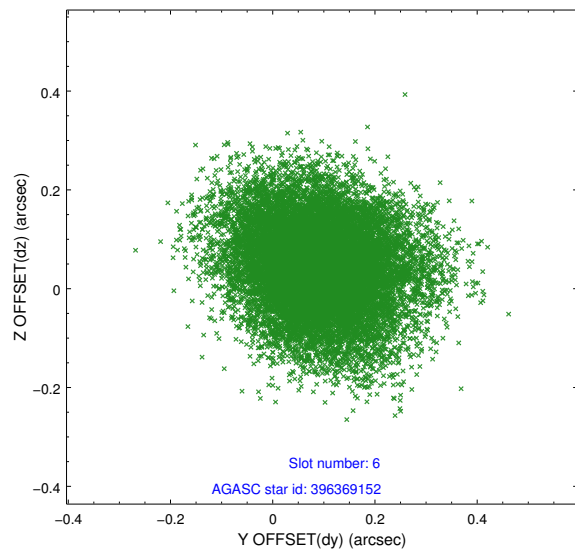
2.4.2 Slot 4



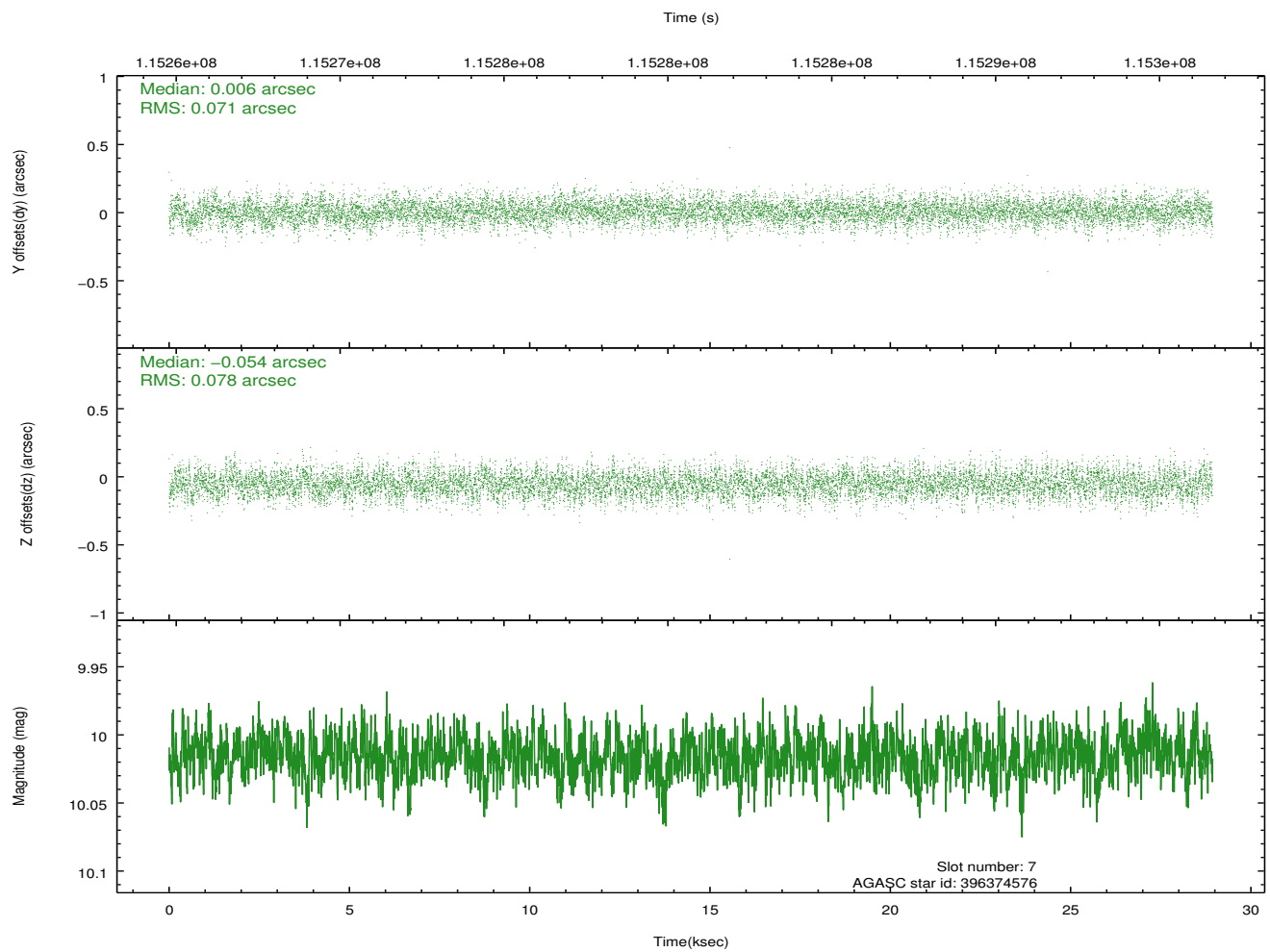
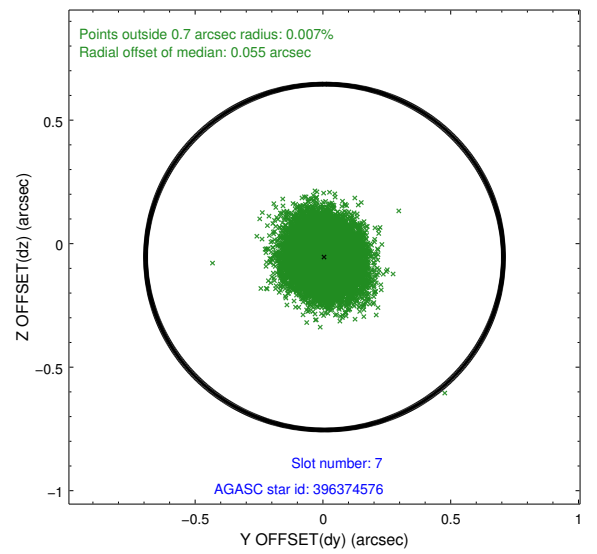
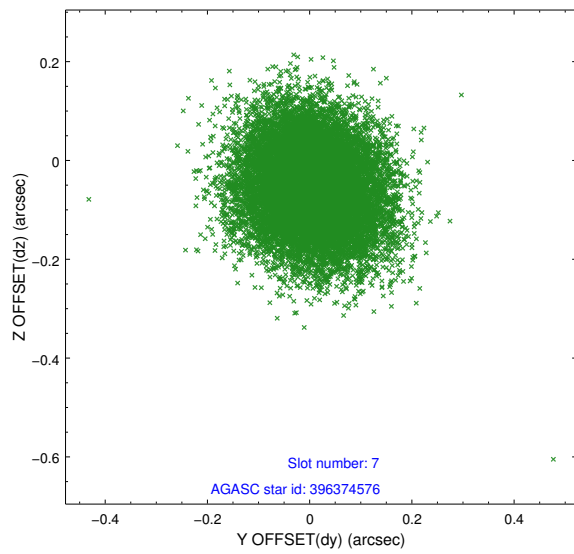
2.4.3 Slot 5



2.4.4 Slot 6

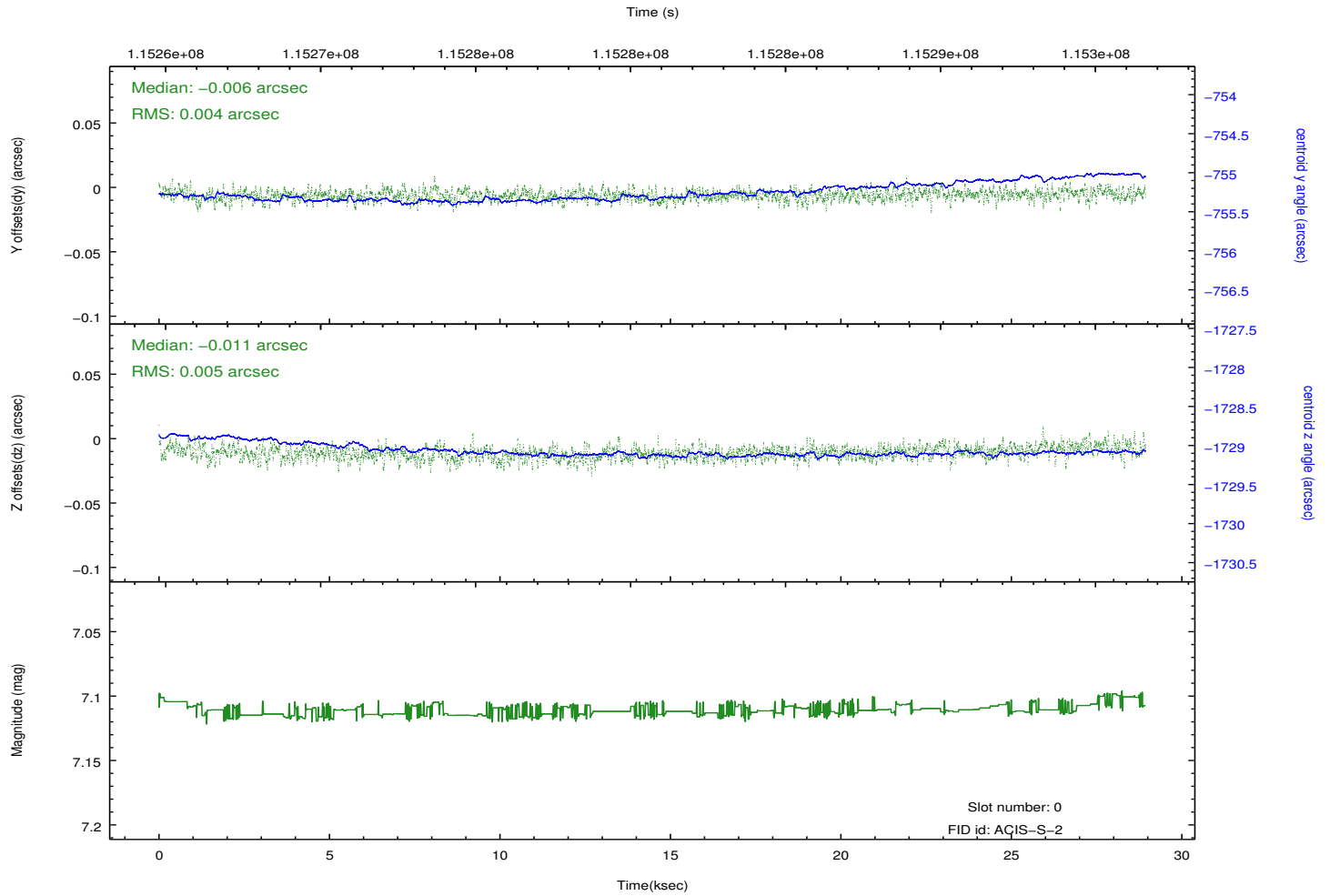
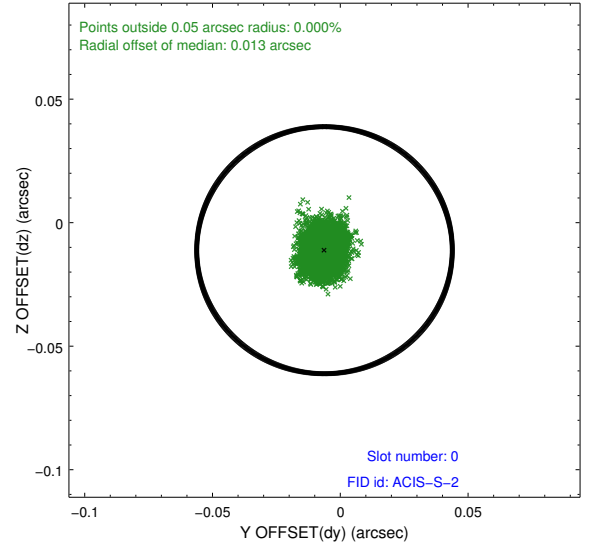
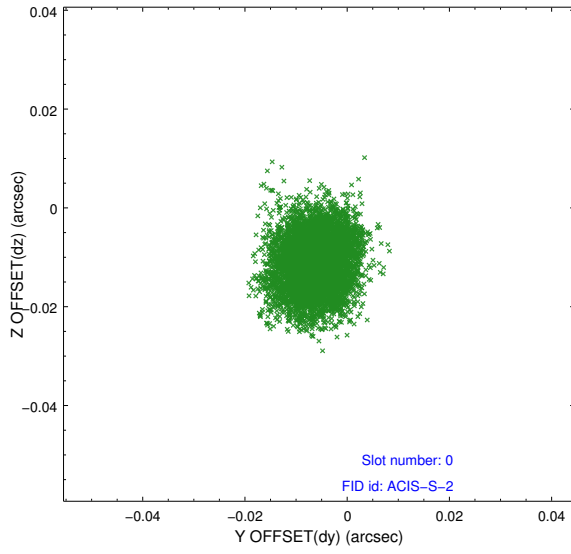


2.4.5 Slot 7

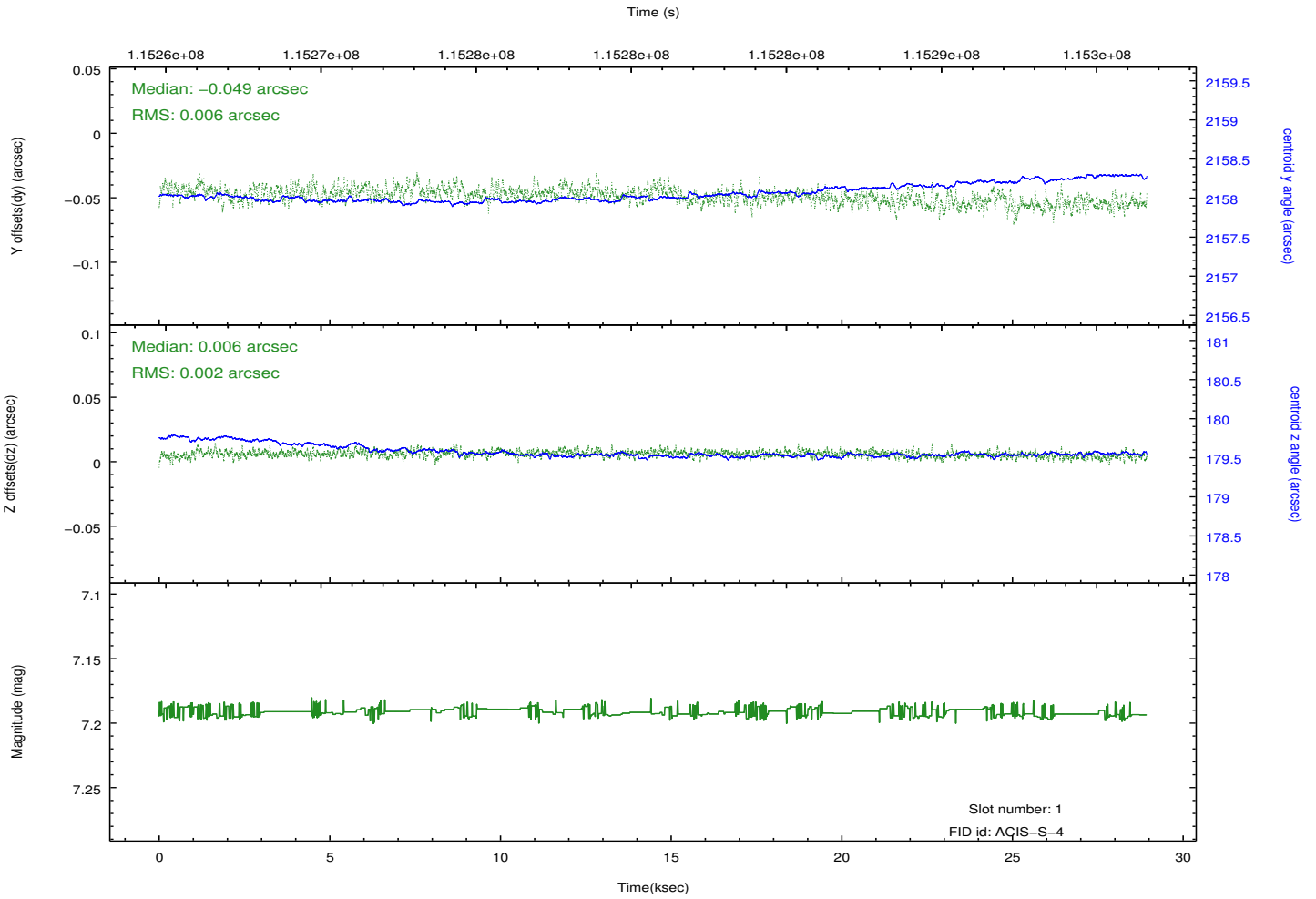
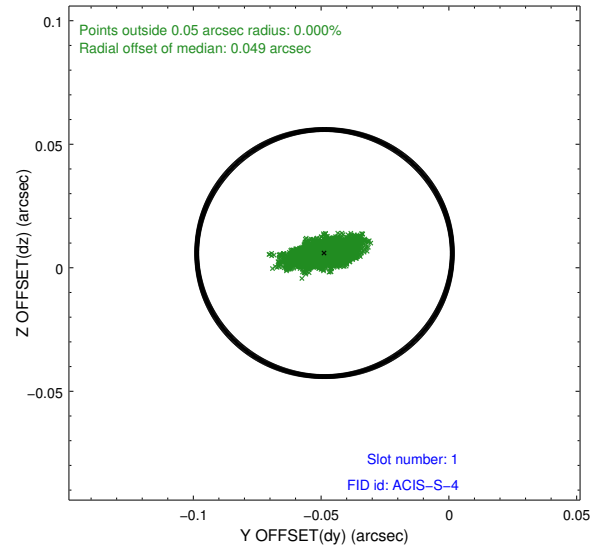
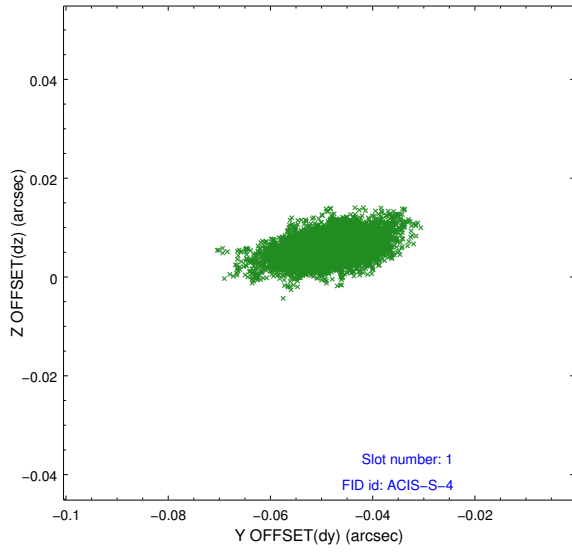


2.5 FID Slots

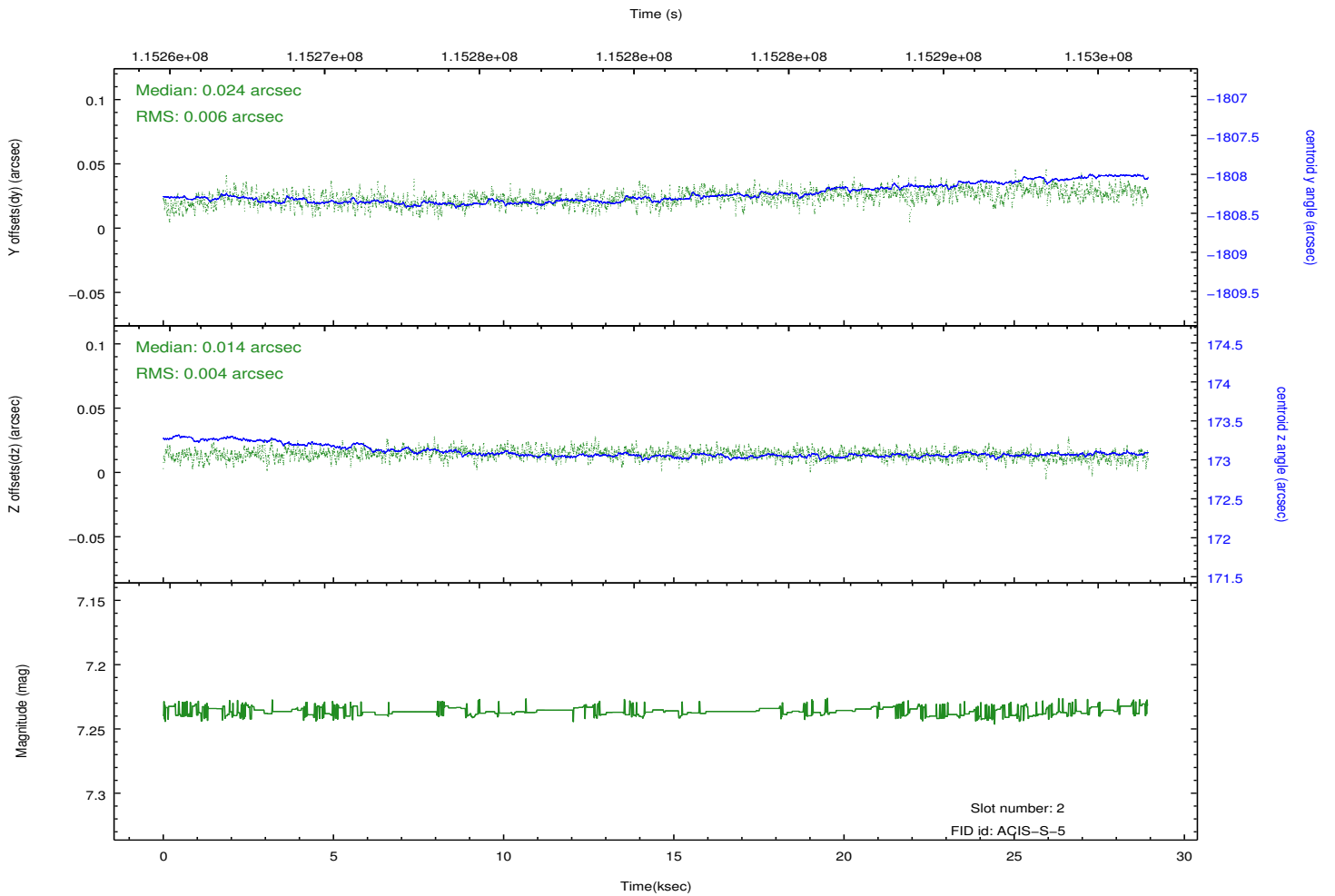
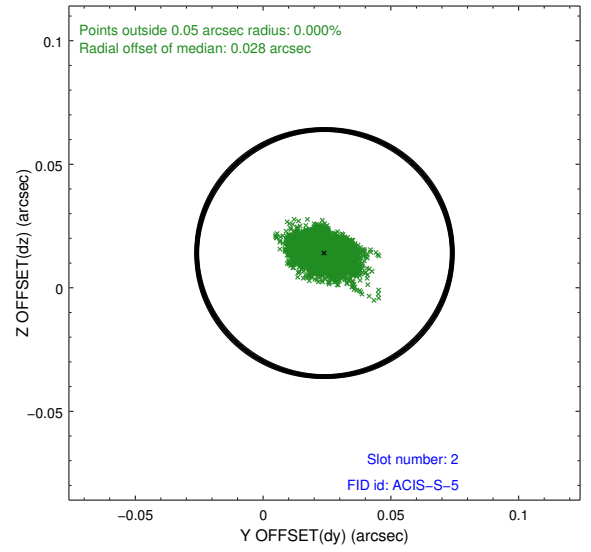
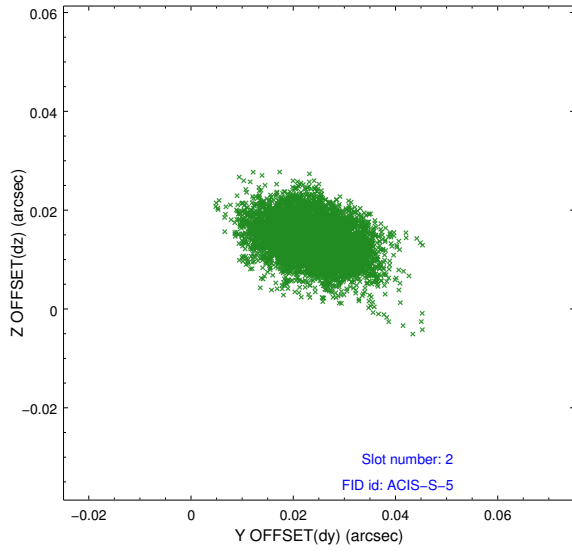
2.5.1 Slot 0



2.5.2 Slot 1



2.5.3 Slot 2



A Summary

A.1 Status

V&V Scientist	Jen Lauer
V&V Date (YYYY-MM-DD)	2012.09.26
V&V Edition	1
V&V Disposition and Status	OK
V&V Charge Time	28.355

A.2 Comments