

V&V Reference Report

L2 ASCDS Version : 8.4.5

Observation 2237 - L2 Version 3
Chandra X-Ray Center

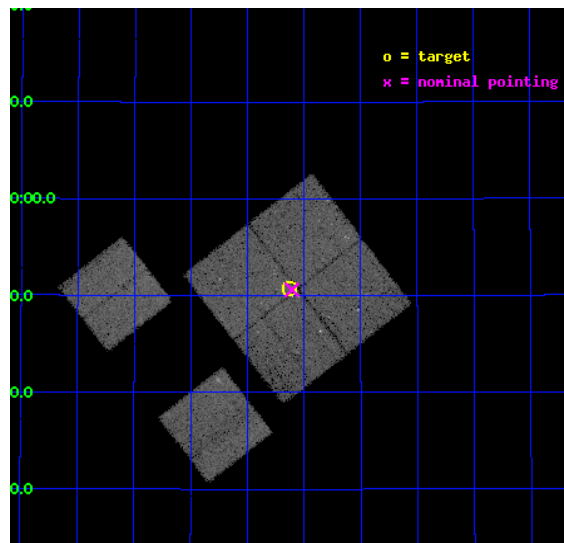
L2 Processing Date : Sep 17 2012

Contents

1	Front	2
2	OBI	3
2.1	OBI	3
2.1.1	Images	3
2.1.2	Bias	3
2.1.3	Parameters	4
2.1.4	Events	4
2.2	Compared Parameters	5
2.3	Aspect	6
2.4	Star Slots	9
2.4.1	Slot 3	9
2.4.2	Slot 4	10
2.4.3	Slot 5	11
2.4.4	Slot 6	12
2.4.5	Slot 7	13
2.5	FID Slots	14
2.5.1	Slot 0	14
2.5.2	Slot 1	15
2.5.3	Slot 2	16
A	Summary	17
A.1	Status	17
A.2	Comments	17

1 Front

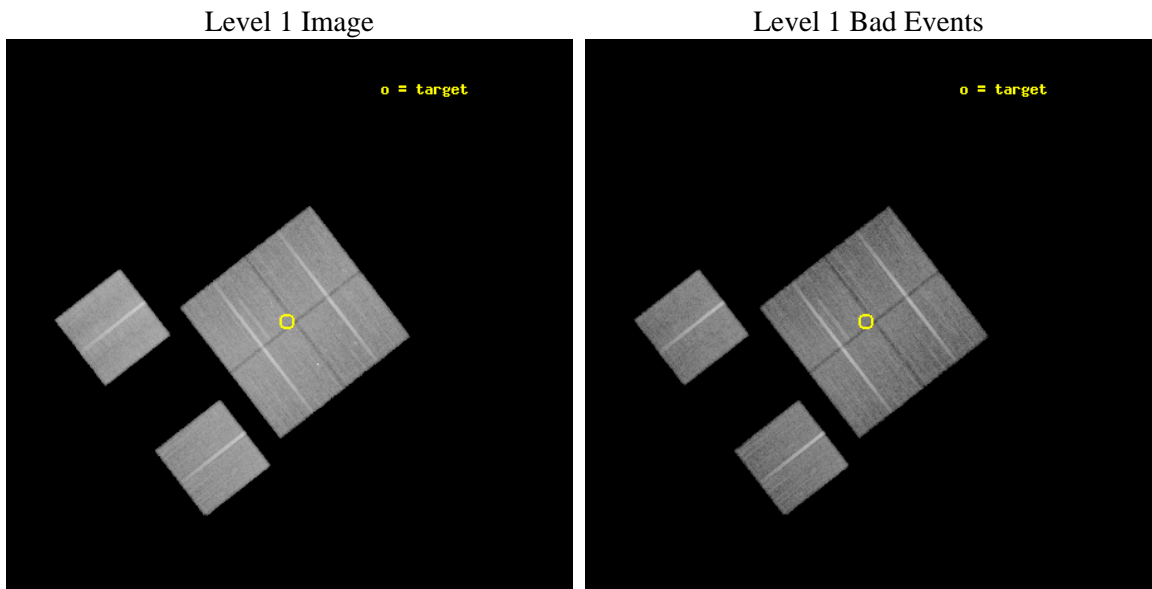
seq_num	900064	Sequence number
obs_id	2237	Observation id
title	A COMBINED CHANDRA/XMM ATTACK ON THE ASTROPHYSICS OF THE HARD X-RAY BACKGROUND.	Proposal title
observer	Prof. Ian McHardy	Principal investigator
object	XMM 13HR - FIELD 2	Source name
dtcycle	0	
cycle	P	events from which exps? Prim/Second/Both
ra_targ	203.782225	Observer's specified target RA [deg]
dec_targ	37.84568	Observer's specified target Dec [deg]
ra_nom	203.77698430038	Nominal RA [deg]
dec_nom	37.843388984604	Nominal Dec [deg]
roll_nom	232.20190312505	Nominal Roll [deg]
revision	3	Processing version of data
ontime	30175.918047741	Sum of GTIs [s]
livetime	29793.812403664	Livetime [s]
ontime0	30179.159047931	Sum of GTIs [s]
ontime1	30182.400028095	Sum of GTIs [s]
ontime2	30179.159057856	Sum of GTIs [s]
ontime3	30175.918047741	Sum of GTIs [s]
ontime6	30182.400028095	Sum of GTIs [s]
ontime8	30182.400028095	Sum of GTIs [s]
l2events	118444	Number of level 2 events



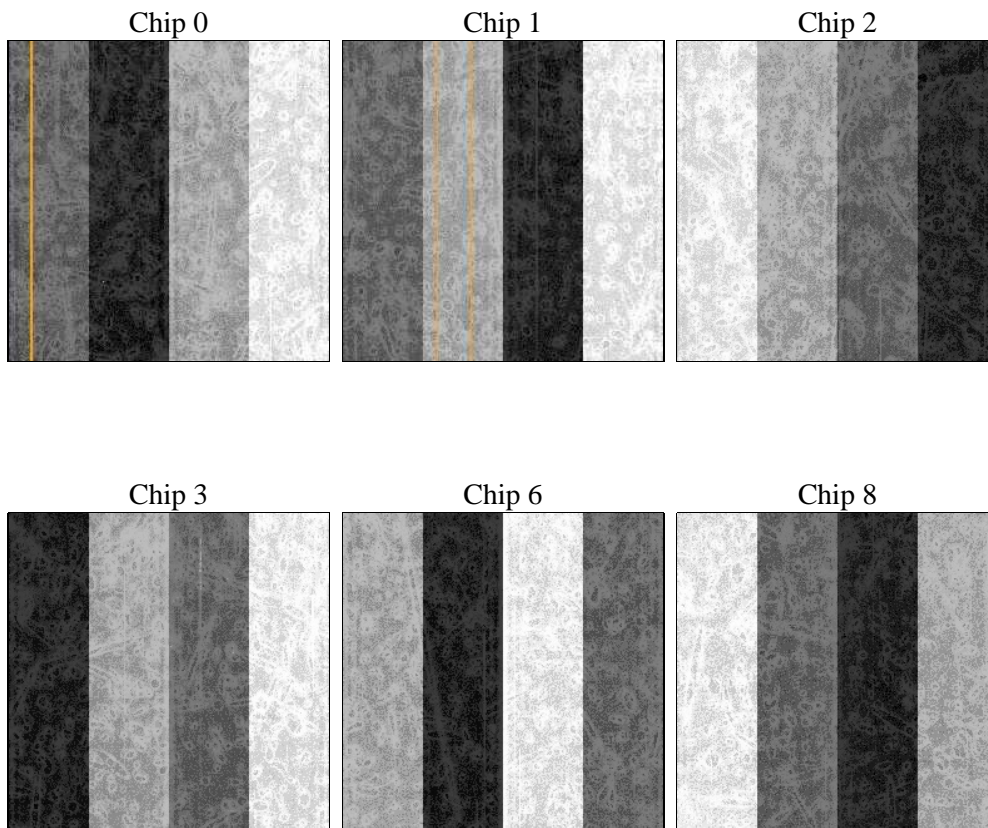
2 OBI

2.1 OBI

2.1.1 Images



2.1.2 Bias



2.1.3 Parameters

obi_num	1	Obi number	sched_exp_time	30425.000000	[s] Scheduled observation exposure time
ascdsver	8.4.5	Processing system revision	ontime	30175.918047741	Sum of GTIs [s]
caldbver	4.5.1.1	 	ontime0	30179.159047931	Sum of GTIs [s]
date	2012-09-17T19:08:42	Date and time of file creation	ontime1	30182.400028095	Sum of GTIs [s]
revision	3	Processing version of data	ontime2	30179.159057856	Sum of GTIs [s]
			ontime3	30175.918047741	Sum of GTIs [s]
			ontime6	30182.400028095	Sum of GTIs [s]
			ontime8	30182.400028095	Sum of GTIs [s]
			l1events	1190611	Number of level 1 events

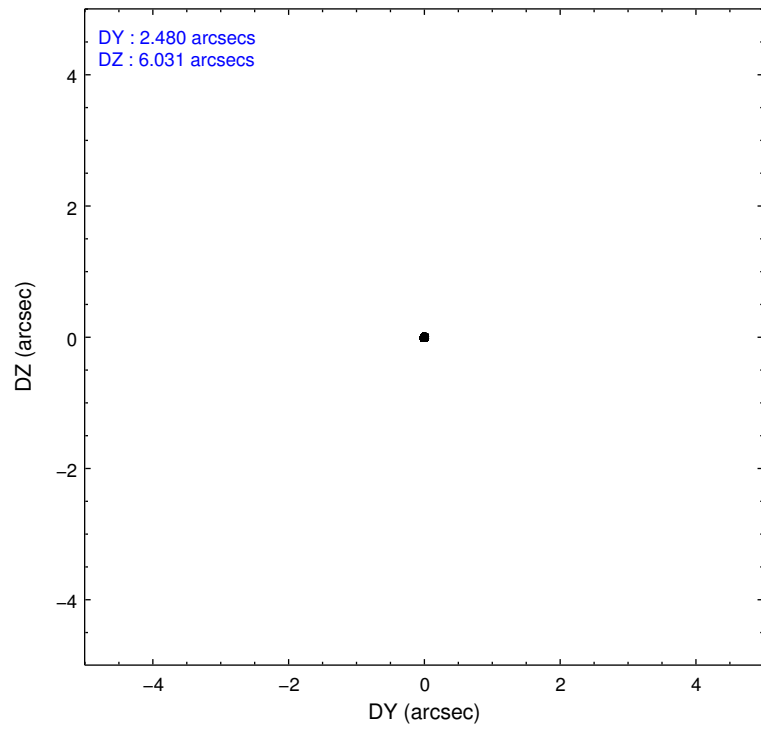
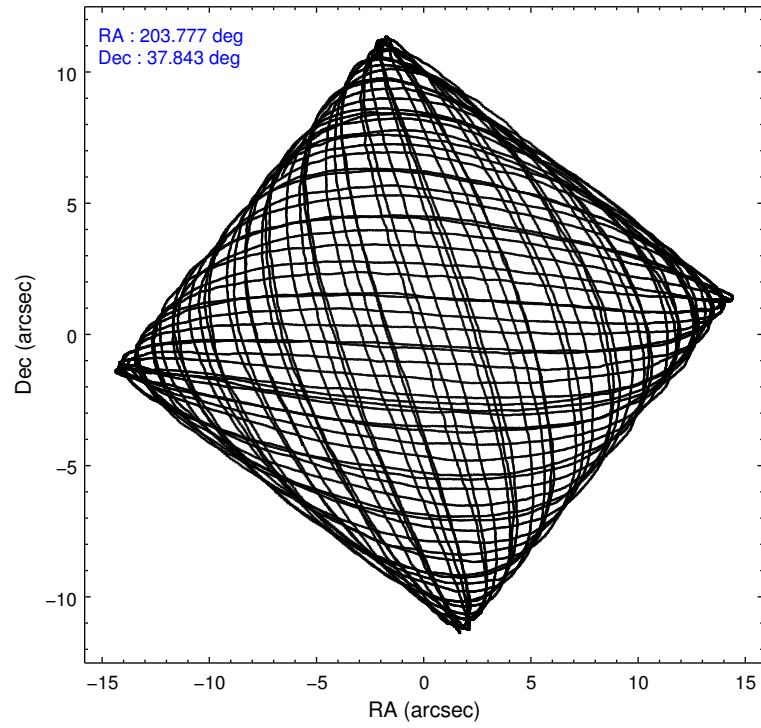
2.1.4 Events

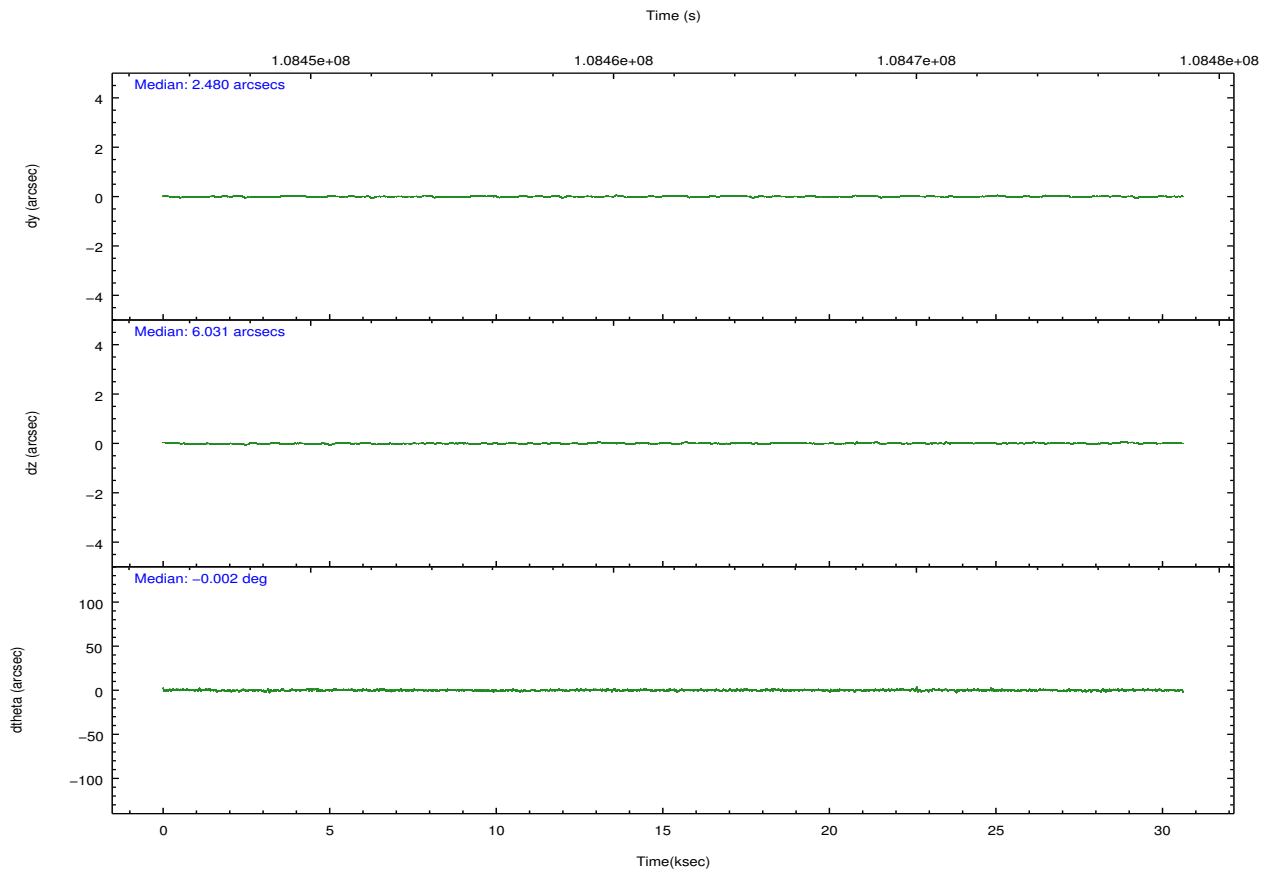
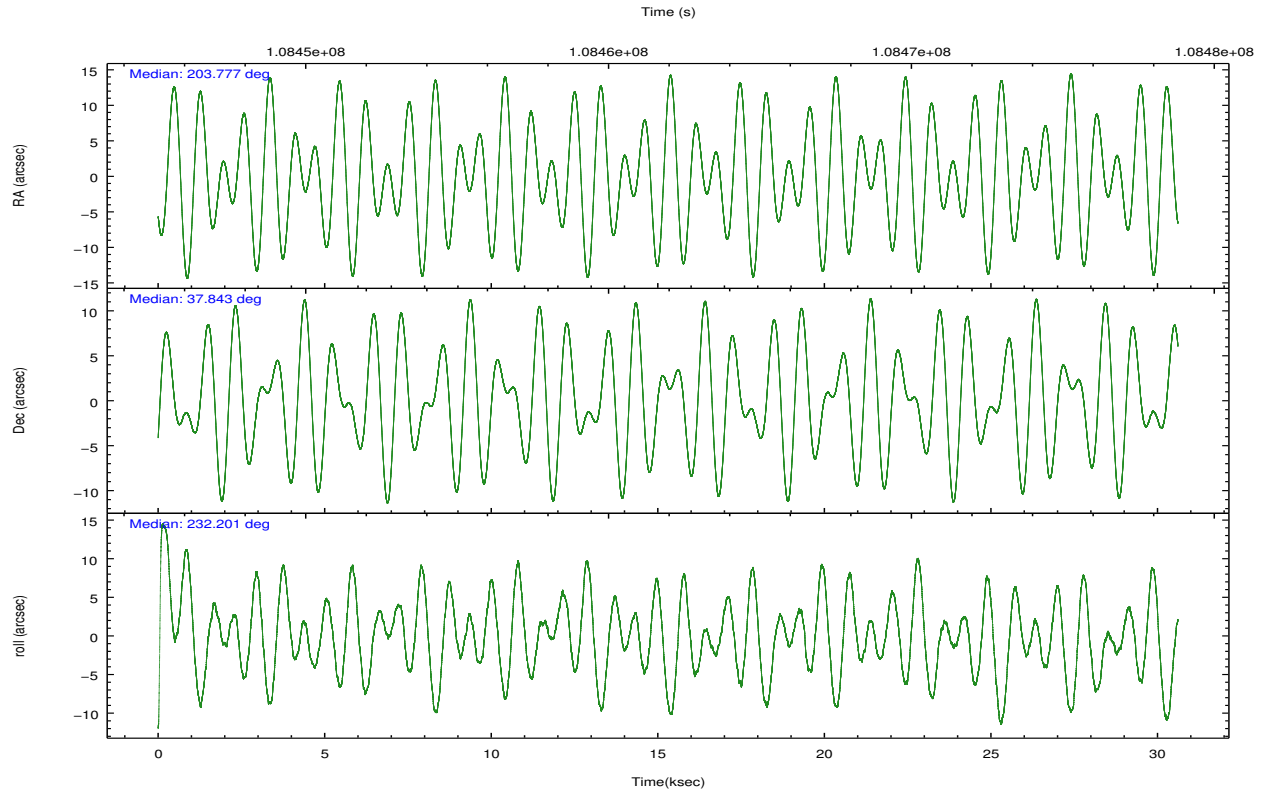
	ccd 0	ccd 1	ccd 2	ccd 3	ccd 6	ccd 8		ccd 0	ccd 1	ccd 2	ccd 3	ccd 6	ccd 8
level 1 events	175501	174703	197514	195685	194687	252521	grade 0 events	9263	9558	10362	9458	9164	15469
rejected events	153508	151088	174600	173684	172438	202593		5%	5%	5%	4%	4%	6%
rejected %	87%	86%	88%	88%	88%	80%	grade 1 events	93	79	87	82	102	173
								0%	0%	0%	0%	0%	0%
							grade 2 events	4647	4852	4700	4441	4376	10886
								2%	2%	2%	2%	2%	4%
							grade 3 events	2219	2430	2032	2108	2184	5491
								1%	1%	1%	1%	1%	2%
							grade 4 events	2018	2425	2024	2072	2190	5114
								1%	1%	1%	1%	1%	2%
							grade 5 events	6666	7322	6453	7337	7913	10601
								3%	4%	3%	3%	4%	4%
							grade 6 events	3847	4354	3806	3923	4339	12969
								2%	2%	1%	2%	2%	5%
							grade 7 events	146748	143683	168050	166264	164419	191818
								83%	82%	85%	84%	84%	75%

2.2 Compared Parameters

Parameter	Planned	Actual	Parameter	Planned	Actual
Instrument	ACIS	ACIS	Obspar format version number	7	7
Detector	ACIS-012368	ACIS-012368	Obspar file type	PREDICTED	ACTUAL
Grating	NONE	NONE	Obspar update status	NONE	UPDATED
Data mode	VFAINT	VFAINT	Number of optional ACIS chips dropped	0	0
Observation mode	POINTING	POINTING	On-chip summing requested	N	N
[deg] Pointing RA	203.781662	203.7769843003803	Subarray requested	NONE	NONE
[deg] Pointing Dec	37.870558	37.84338898460425	Alternating exposures requested	N	N
[deg] Pointing Roll	231.990346	232.201903125051	[s] Primary exposure time	0.000000	3.2
[mm] SIM focus pos	-0.782348	-0.7809083437167272			
[mm] SIM defocus	0	0.001439871863259334			
[mm] SIM translation stage pos	-233.592463	-233.5874344608287			
[mm] SIM translation stage offset	0	-0.005018542100998502			
[s] Observation start time (MET)	108446845.184000	108446469.5581			
Observation start date	2001-06-09T04:06:21	2001-06-09T04:01:09			
[s] Observation end time (MET)	108477270.184000	108477404.0593			
Observation end date	2001-06-09T12:33:26	2001-06-09T12:36:44			
Read mode	TIMED	TIMED			

2.3 Aspect



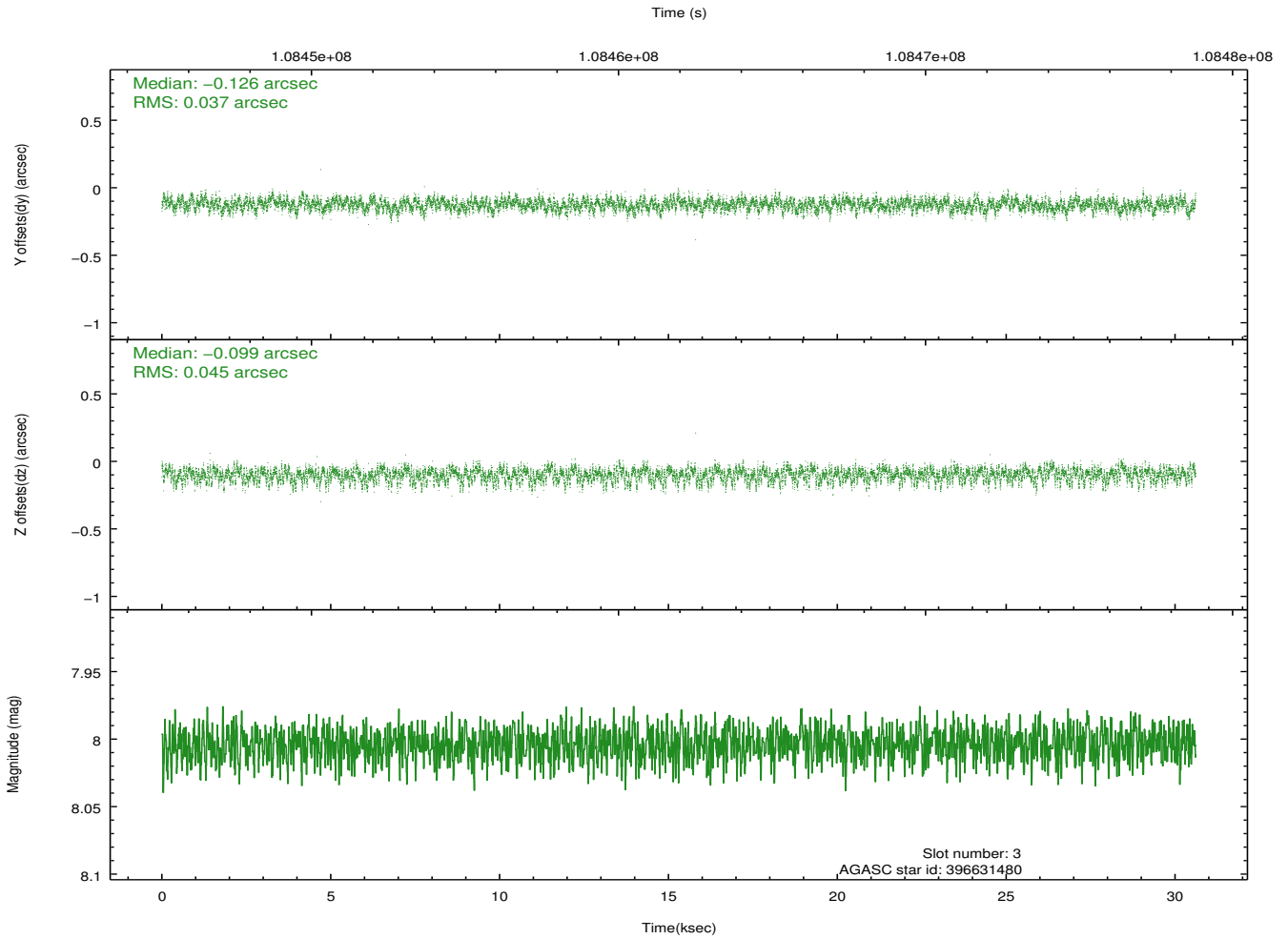
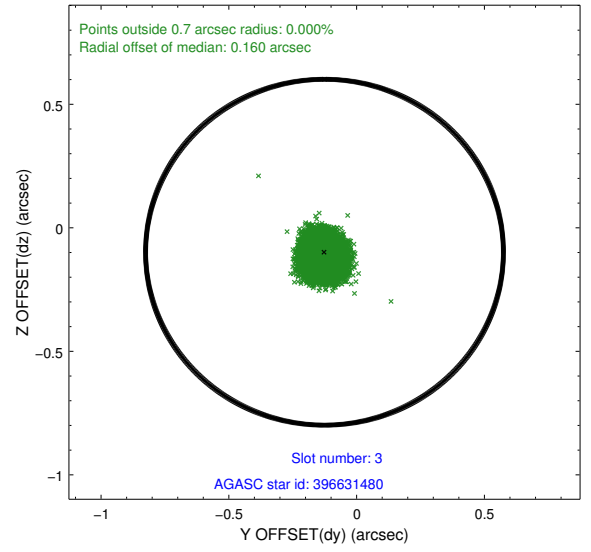
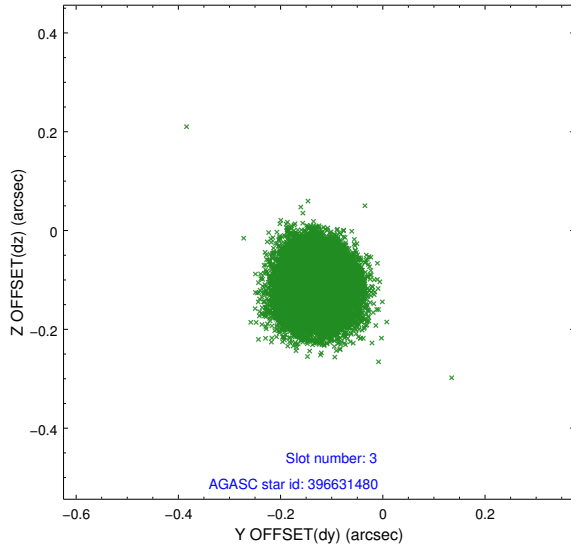


Slot Statistics

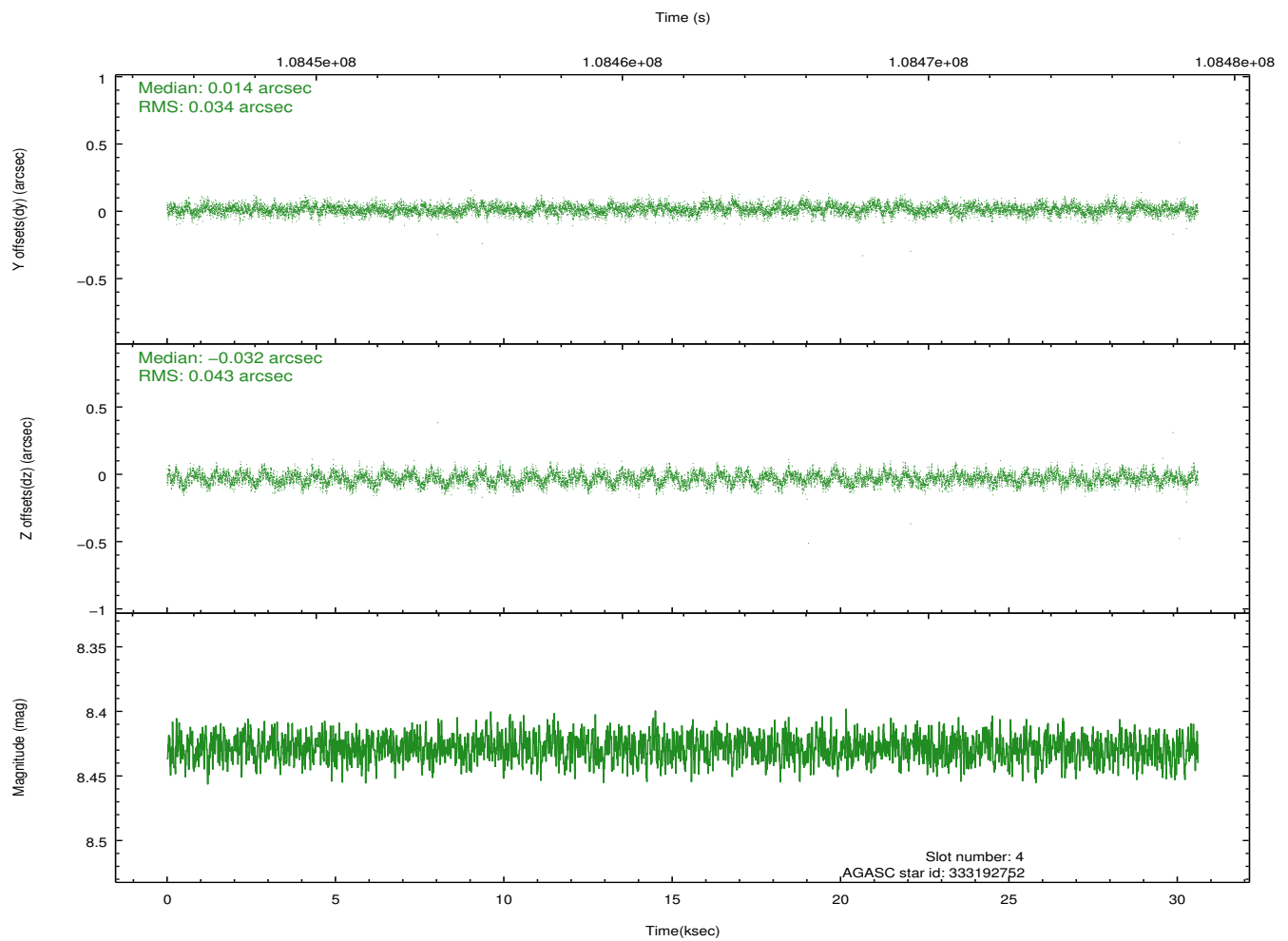
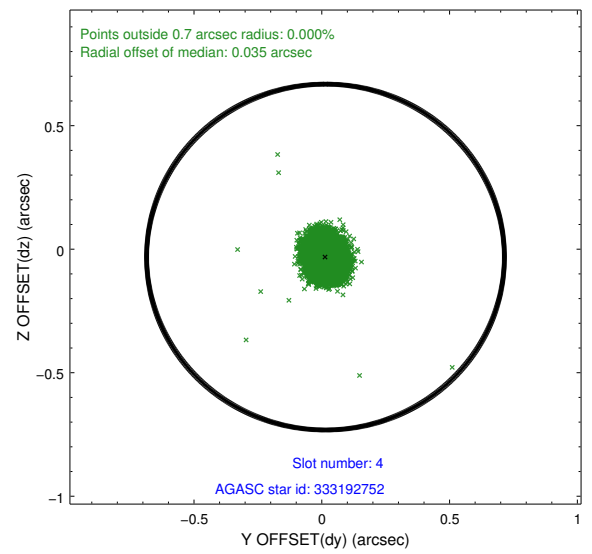
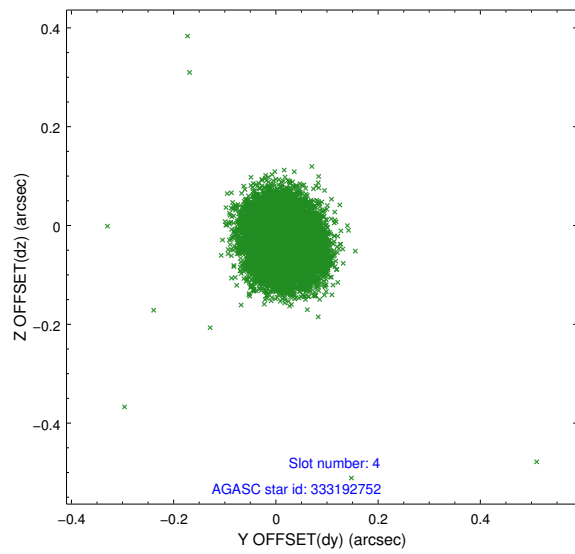
slot	status	id	mag	n_pts	med_dy	med_dz	dr1	dr2	ra	dec	mean_y	mean_z
0	FID	ACIS-I-2	7.15	7467	-0.031	-0.054	0.009	0.015	0.000000	0.000000	-756.87	-835.82
1	FID	ACIS-I-4	7.18	7467	-0.015	0.041	0.006	0.011	0.000000	0.000000	2157.17	1070.43
2	FID	ACIS-I-5	7.23	7467	-0.055	0.083	0.009	0.015	0.000000	0.000000	-1810.64	1068.38
3	GUIDE	396631480	8.00	14932	-0.126	-0.099	0.062	0.102	203.891262	37.702710	284.01	617.89
4	GUIDE	333192752	8.43	14929	0.014	-0.032	0.057	0.093	203.839277	37.405848	1217.09	1160.06
5	GUIDE	333190472	9.30	14918	0.180	0.198	0.081	0.132	203.664903	37.181947	2159.99	1262.95
6	GUIDE	396628240	9.34	14926	-0.159	-0.021	0.104	0.166	203.780849	38.306087	-1233.53	-967.23
7	GUIDE	396632024	9.50	14922	0.096	-0.040	0.105	0.171	204.531533	37.981693	-1631.85	1424.79

2.4 Star Slots

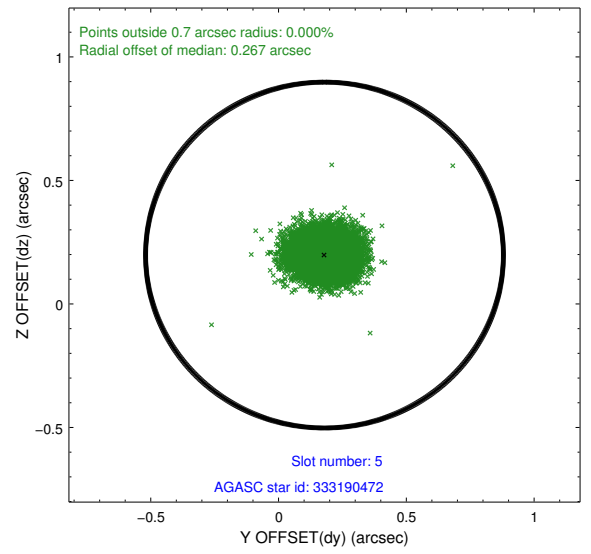
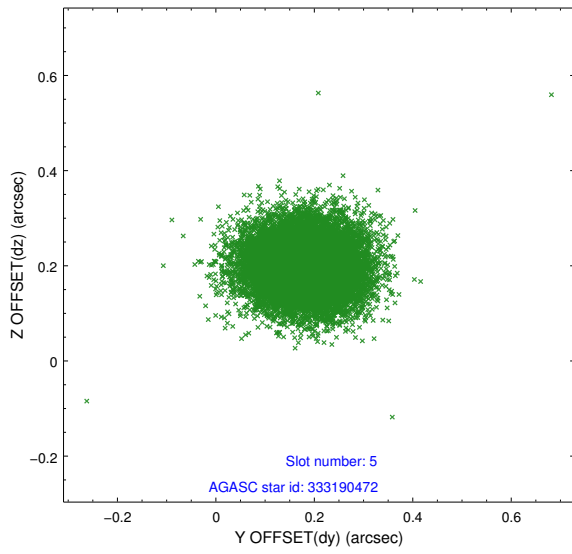
2.4.1 Slot 3



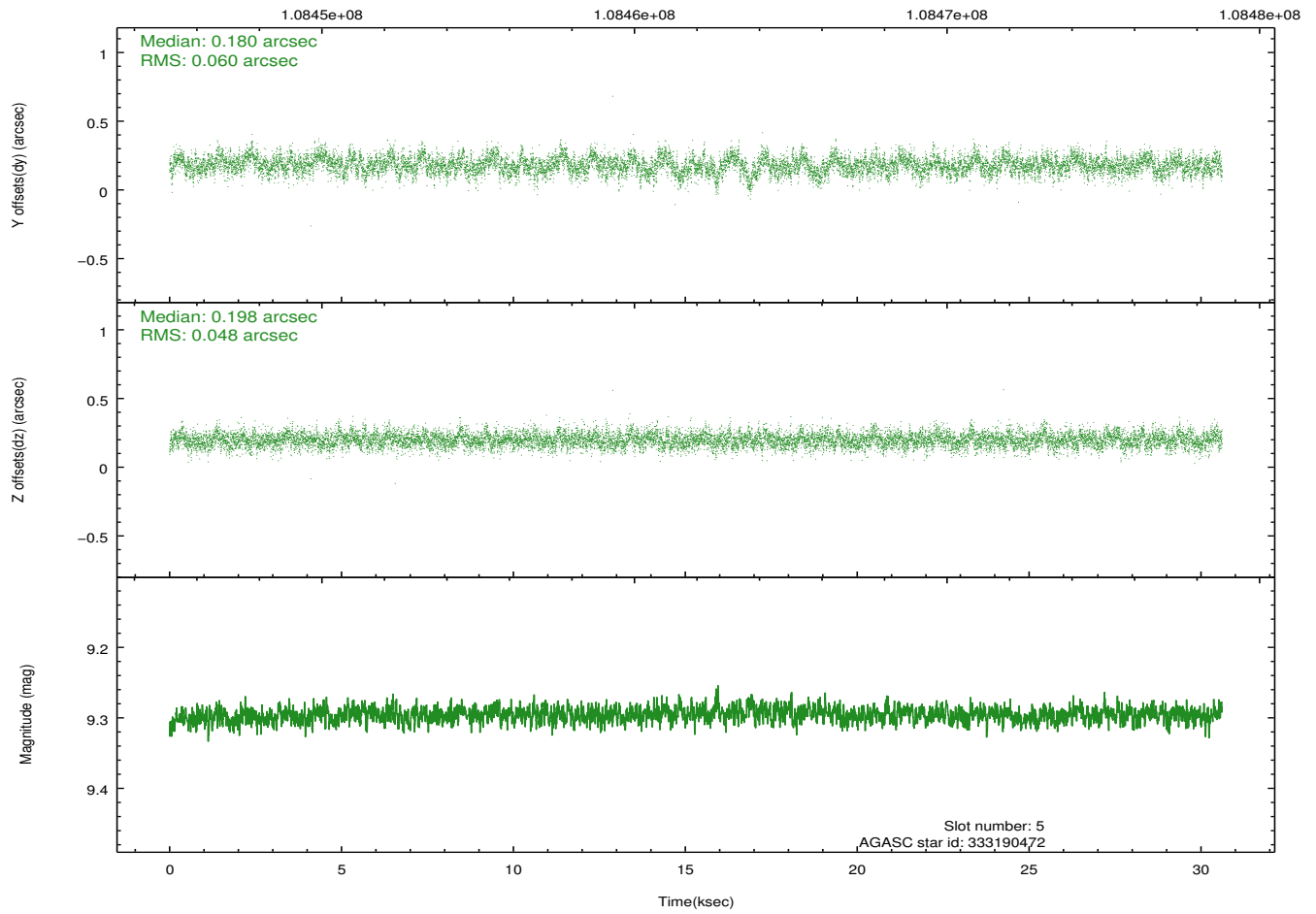
2.4.2 Slot 4



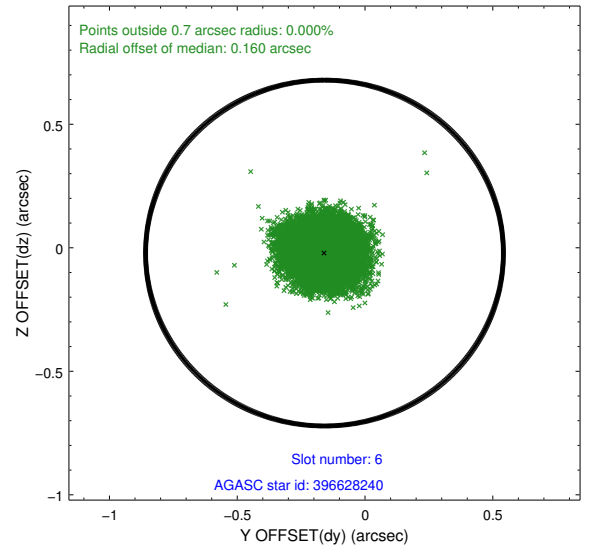
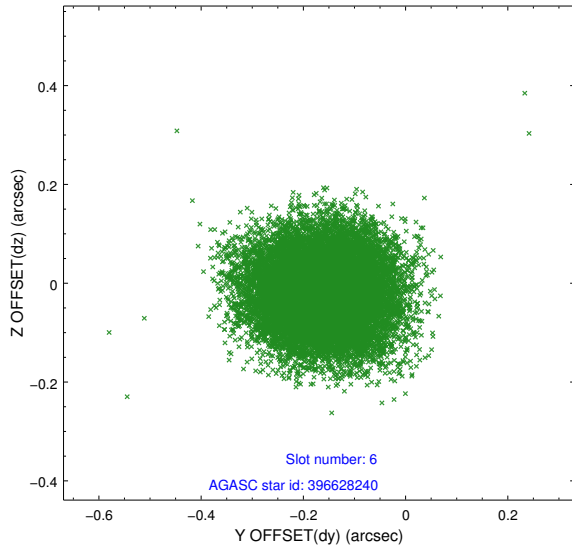
2.4.3 Slot 5



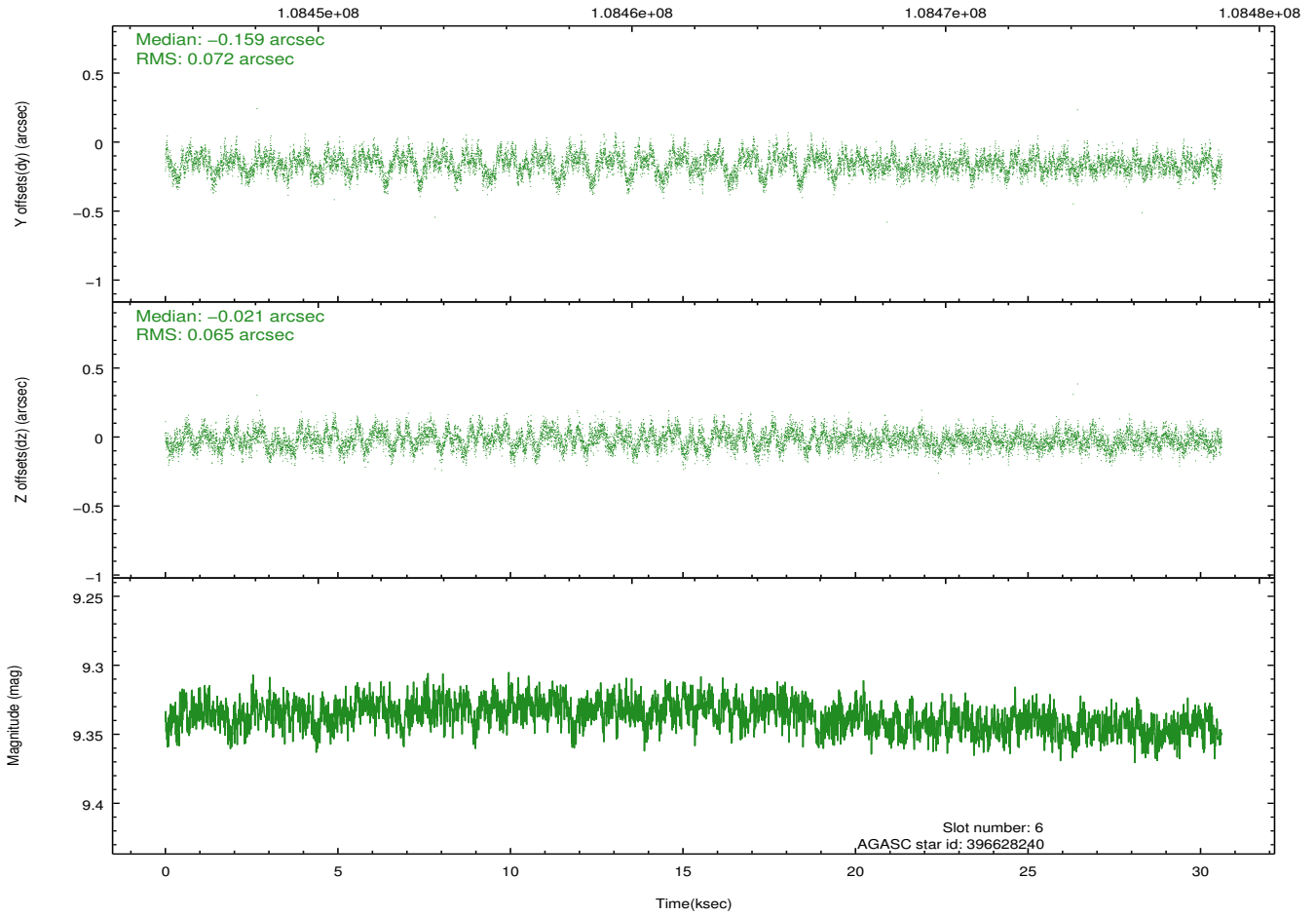
Time (s)



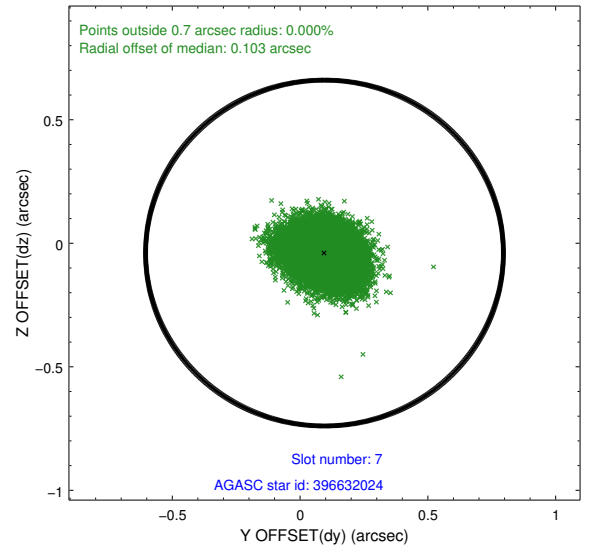
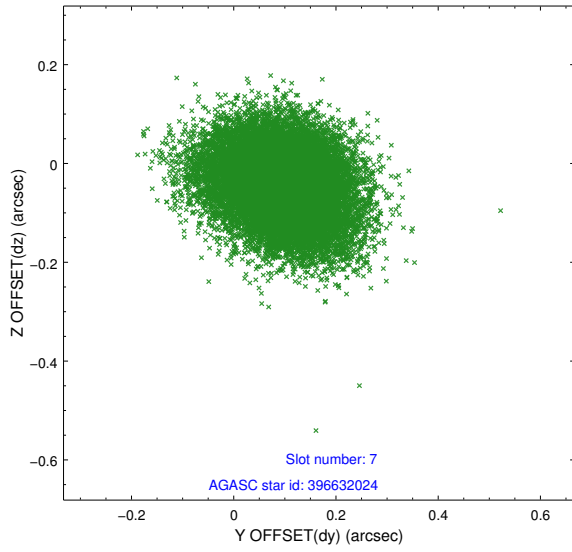
2.4.4 Slot 6



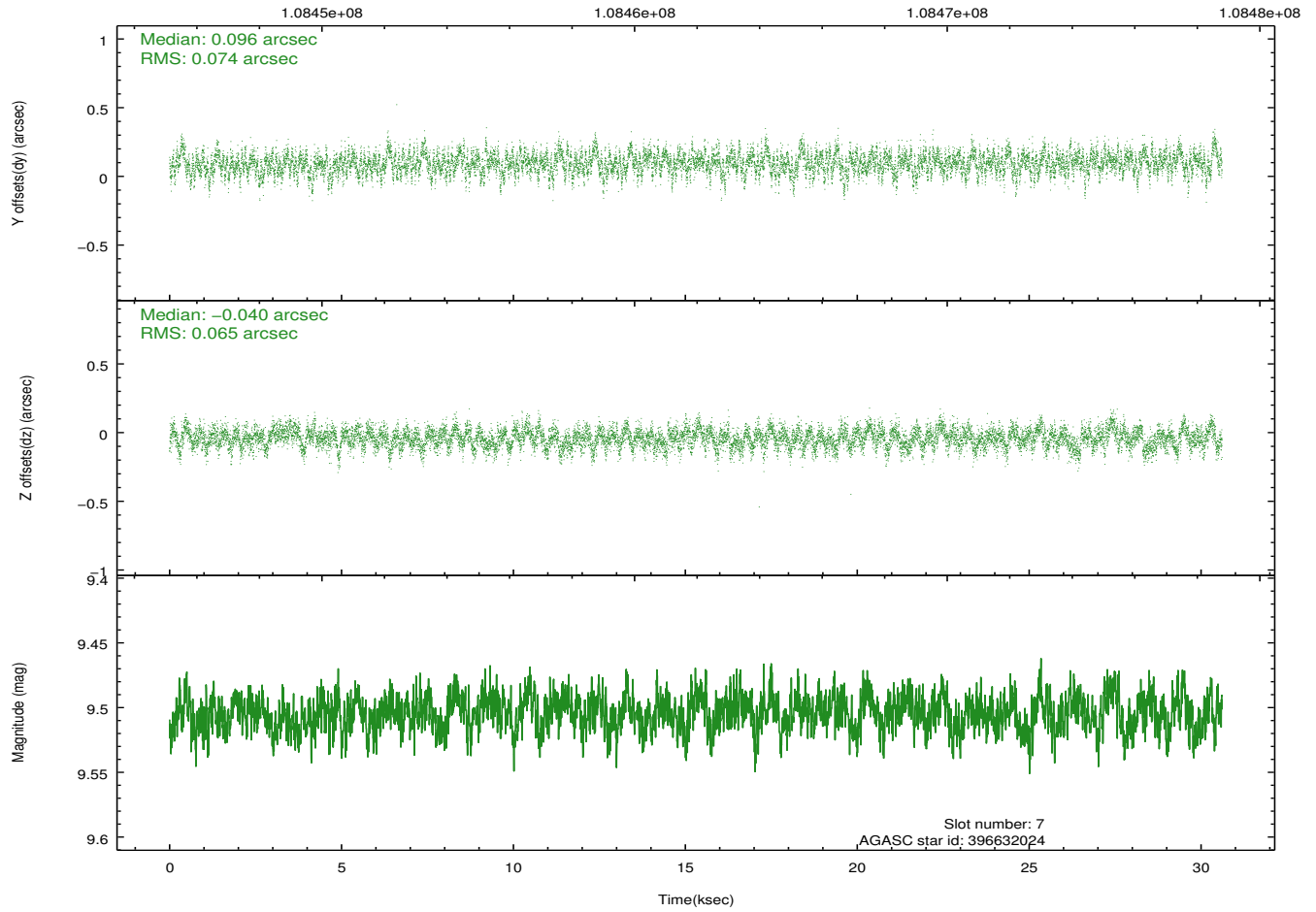
Time (s)



2.4.5 Slot 7

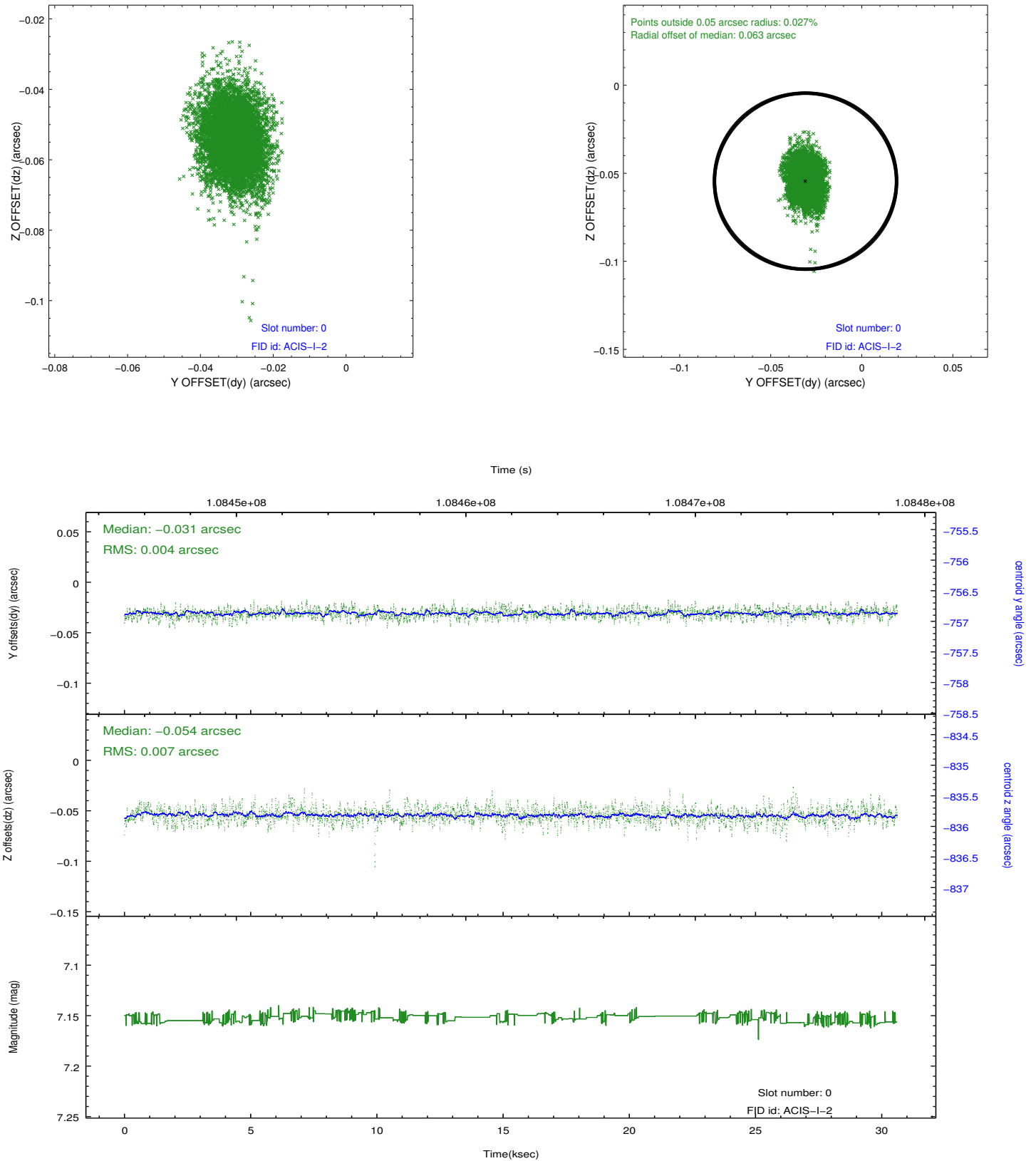


Time (s)

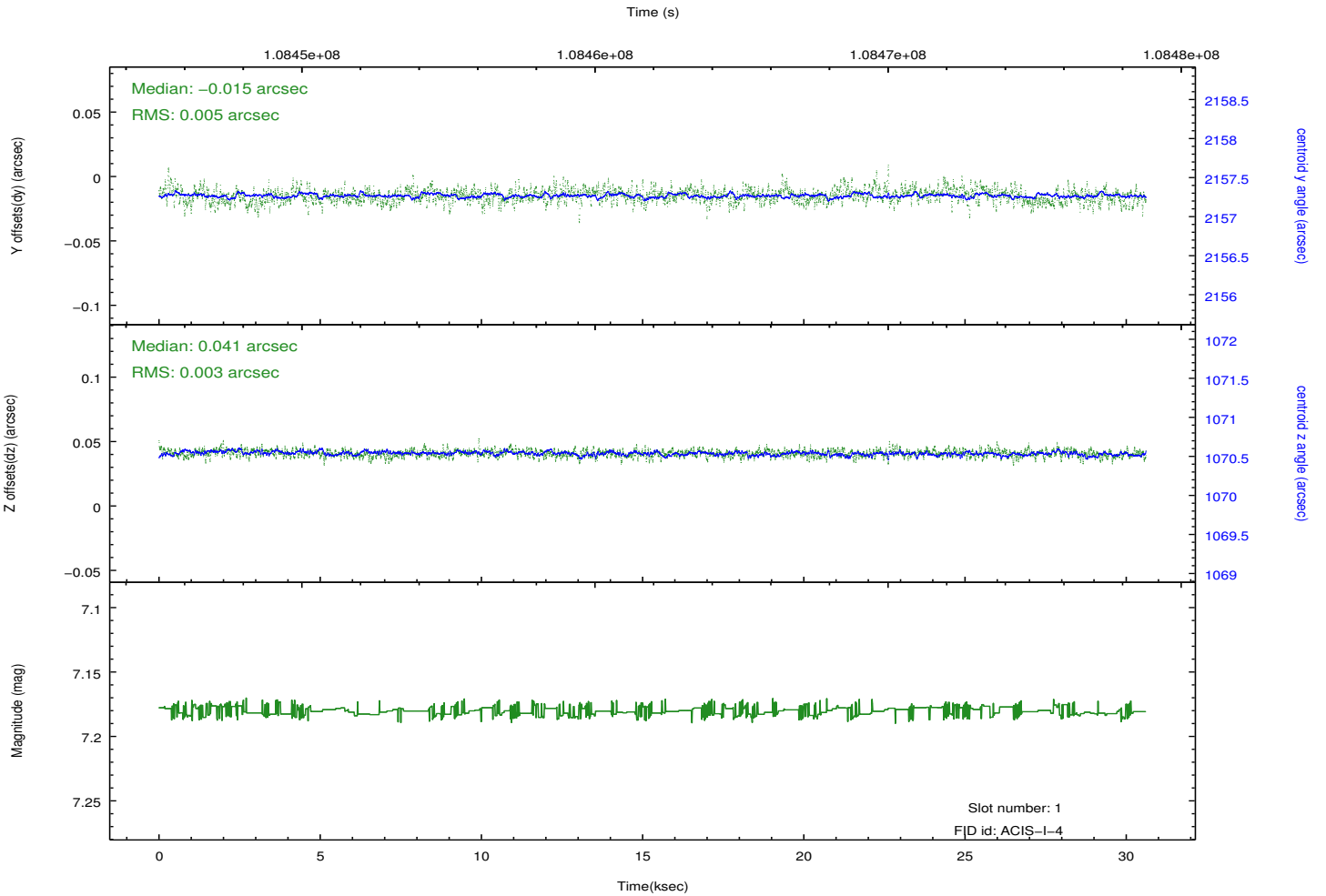
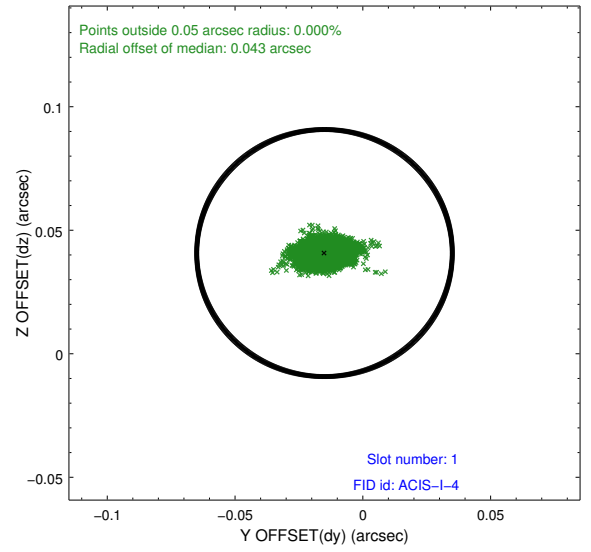
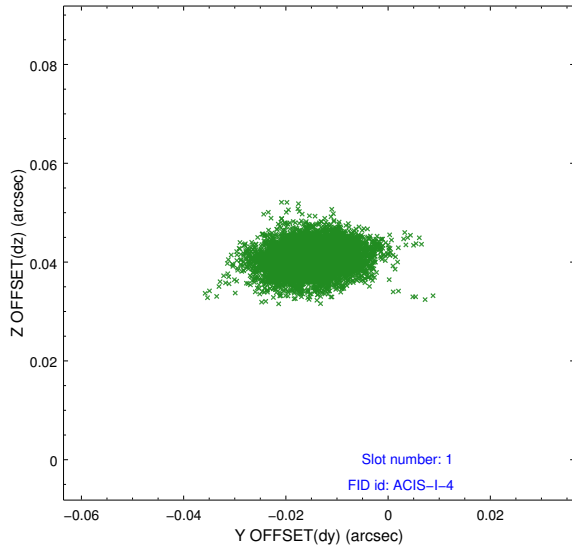


2.5 FID Slots

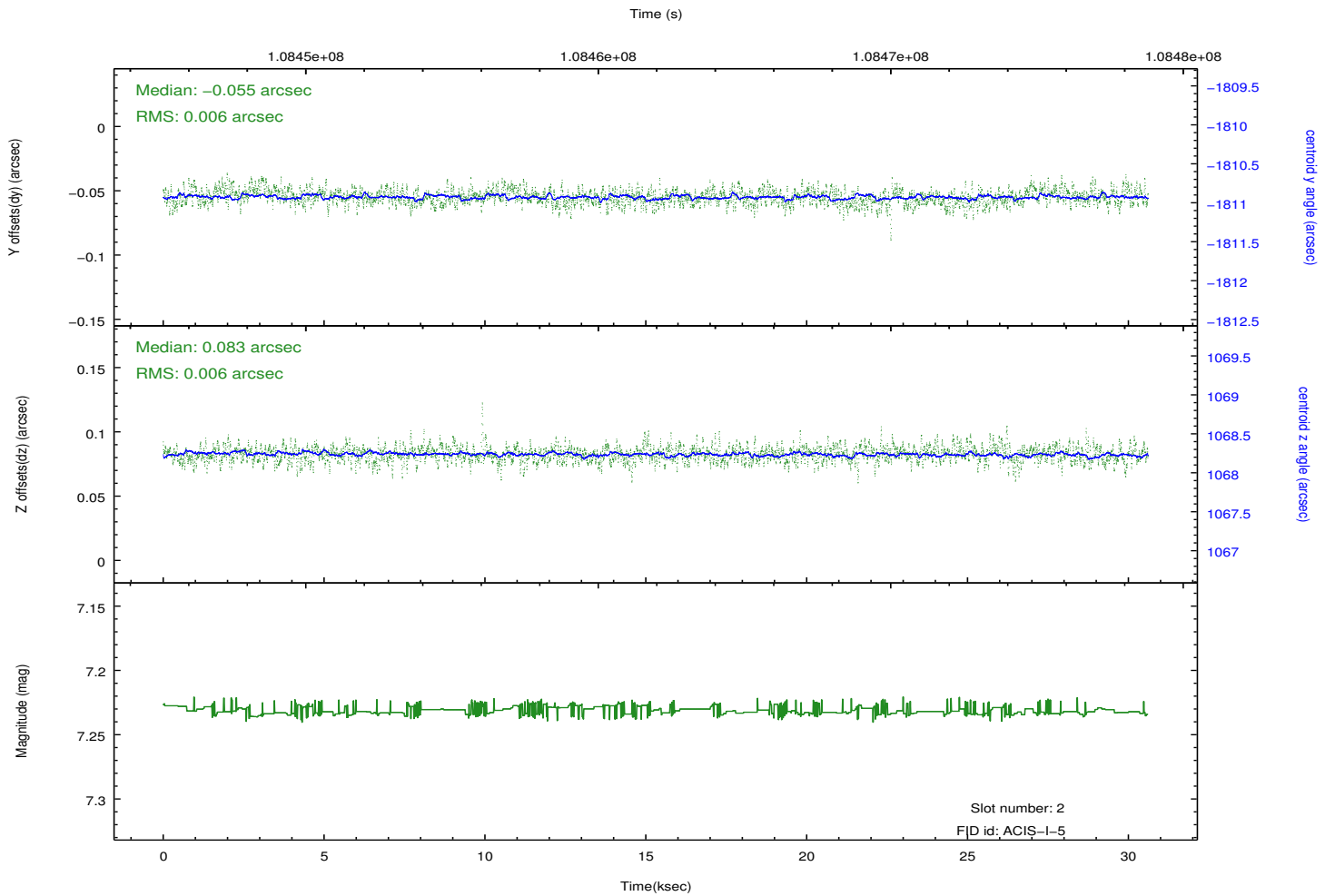
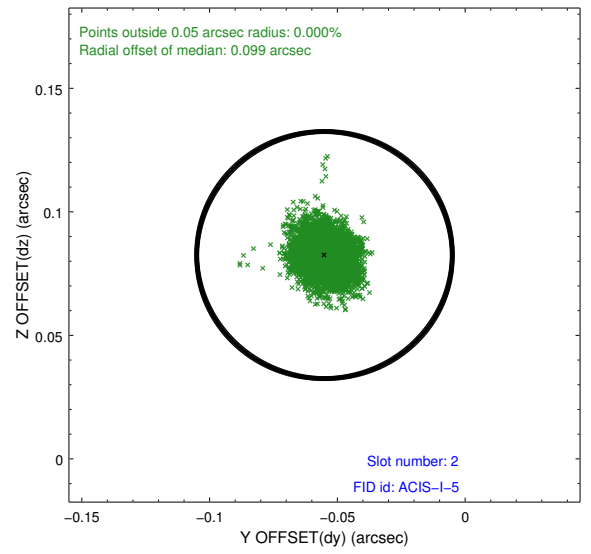
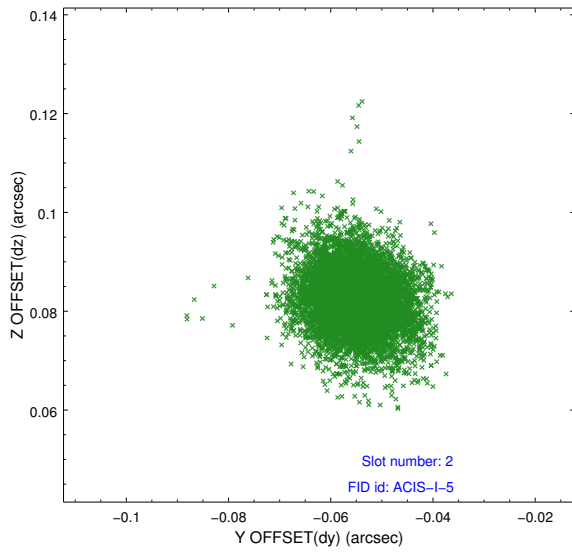
2.5.1 Slot 0



2.5.2 Slot 1



2.5.3 Slot 2



A Summary

A.1 Status

V&V Scientist	Jen Lauer
V&V Date (YYYY-MM-DD)	2012.09.20
V&V Edition	1
V&V Disposition and Status	OK
V&V Charge Time	30.179

A.2 Comments