

# V&V Reference Report

## L2 ASCDS Version : 8.4.5

Observation 3137 - L2 Version 3  
Chandra X-Ray Center

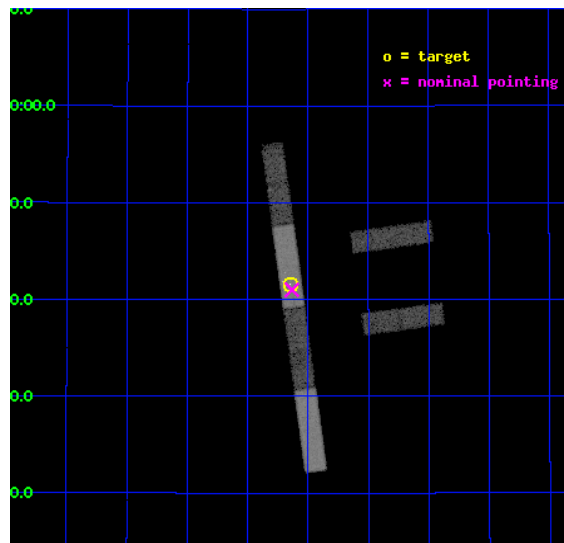
L2 Processing Date : Oct 10 2012

## Contents

<b>1</b>	<b>Front</b>	<b>2</b>
<b>2</b>	<b>OBI</b>	<b>3</b>
2.1	OBI . . . . .	3
2.1.1	Images . . . . .	3
2.1.2	Bias . . . . .	3
2.1.3	Parameters . . . . .	4
2.1.4	Events . . . . .	4
2.2	Compared Parameters . . . . .	5
2.3	Aspect . . . . .	6
2.4	Star Slots . . . . .	9
2.4.1	Slot 3 . . . . .	9
2.4.2	Slot 4 . . . . .	10
2.4.3	Slot 5 . . . . .	11
2.4.4	Slot 6 . . . . .	12
2.4.5	Slot 7 . . . . .	13
2.5	FID Slots . . . . .	14
2.5.1	Slot 0 . . . . .	14
2.5.2	Slot 1 . . . . .	15
2.5.3	Slot 2 . . . . .	16
<b>A</b>	<b>Summary</b>	<b>17</b>
A.1	Status . . . . .	17
A.2	Comments . . . . .	17

# 1 Front

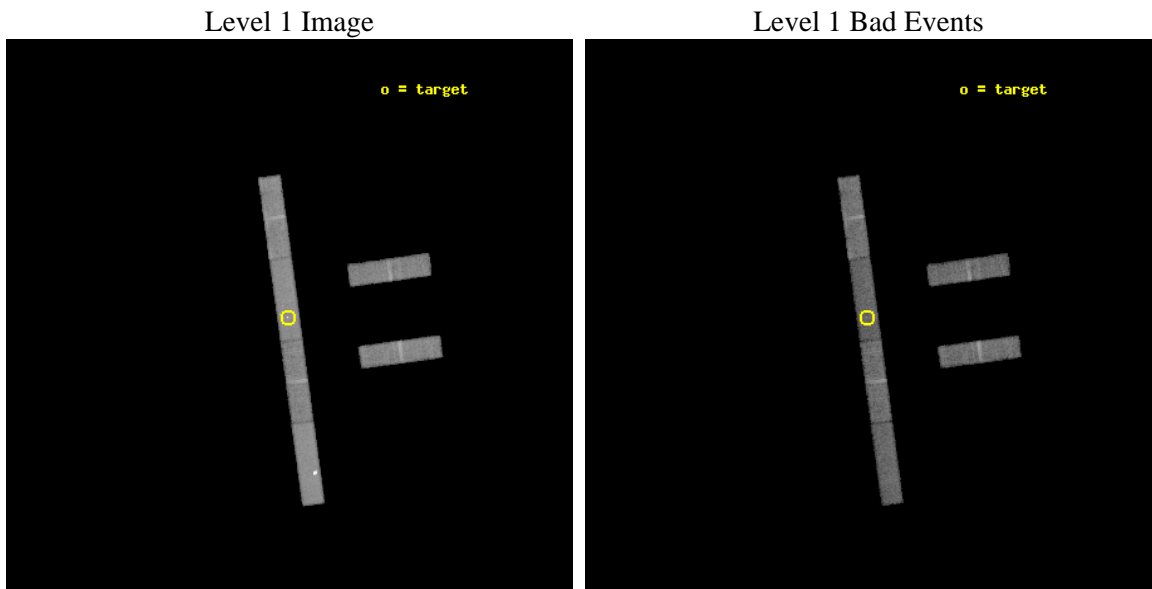
seq_num	700576	Sequence number
obs_id	3137	Observation id
title	SEARCHING FOR MISSING LINK BETWEEN ULTLALUMINOUS INFRARED GALAXIES AND OPTICALLY-SELECTED QUASARS	Proposal title
observer	Dr. Naohisa Anabuki	Principal investigator
object	IRAS 11119+3257	Source name
dtcycle	0	&#160
cycle	P	events from which exps? Prim/Second/Both
ra_targ	168.662083	Observer's specified target RA [deg]
dec_targ	32.692583	Observer's specified target Dec [deg]
ra_nom	168.65854627647	Nominal RA [deg]
dec_nom	32.683378814503	Nominal Dec [deg]
roll_nom	262.21465485191	Nominal Roll [deg]
revision	3	Processing version of data
ontime	18873.758887619	Sum of GTIs [s]
livetime	18194.922856675	Livetime [s]
ontime2	18873.758887619	Sum of GTIs [s]
ontime3	18874.899897695	Sum of GTIs [s]
ontime5	18874.899897695	Sum of GTIs [s]
ontime6	18874.899897695	Sum of GTIs [s]
ontime7	18873.758887619	Sum of GTIs [s]
ontime8	18874.899897695	Sum of GTIs [s]
l2events	72926	Number of level 2 events



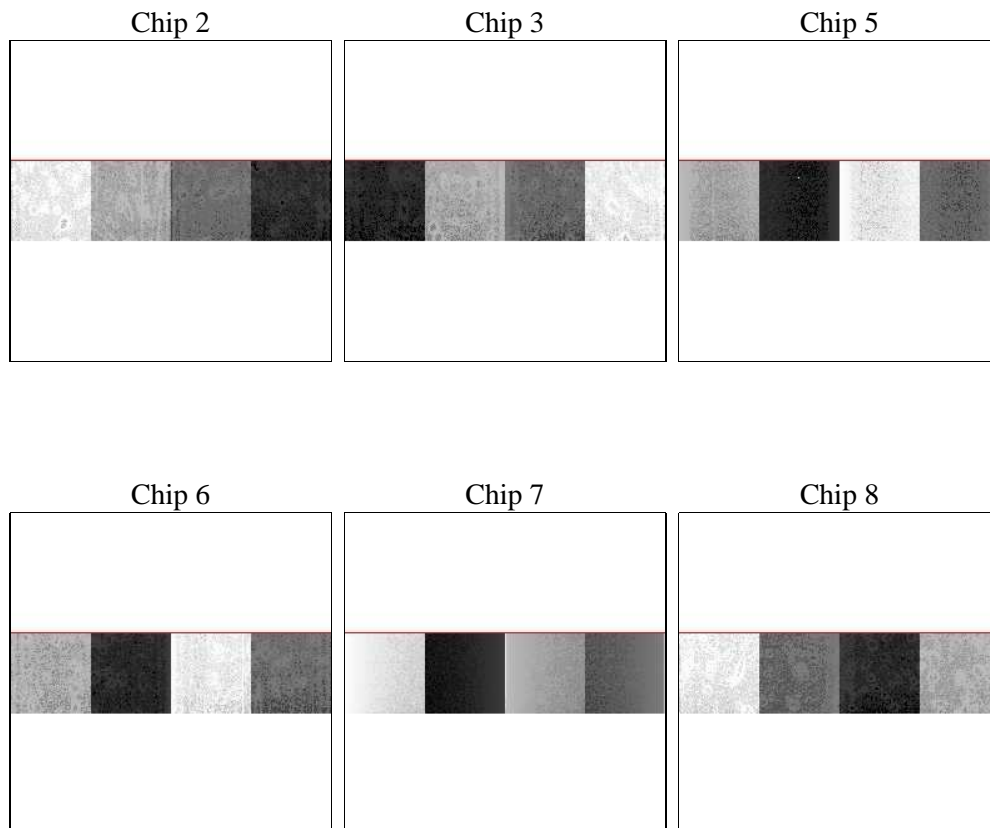
## 2 OBI

### 2.1 OBI

#### 2.1.1 Images



#### 2.1.2 Bias



### 2.1.3 Parameters

obi_num	0	Obi number	sched_exp_time	18322.900000	[s] Scheduled observation exposure time
ascdsver	8.4.5	Processing system revision	ontime	18873.758887619	Sum of GTIs [s]
caldbver	4.5.2	&#160	ontime2	18873.758887619	Sum of GTIs [s]
date	2012-10-10T03:33:29	Date and time of file creation	ontime3	18874.899897695	Sum of GTIs [s]
revision	3	Processing version of data	ontime5	18874.899897695	Sum of GTIs [s]
			ontime6	18874.899897695	Sum of GTIs [s]
			ontime7	18873.758887619	Sum of GTIs [s]
			ontime8	18874.899897695	Sum of GTIs [s]
			l1events	295929	Number of level 1 events

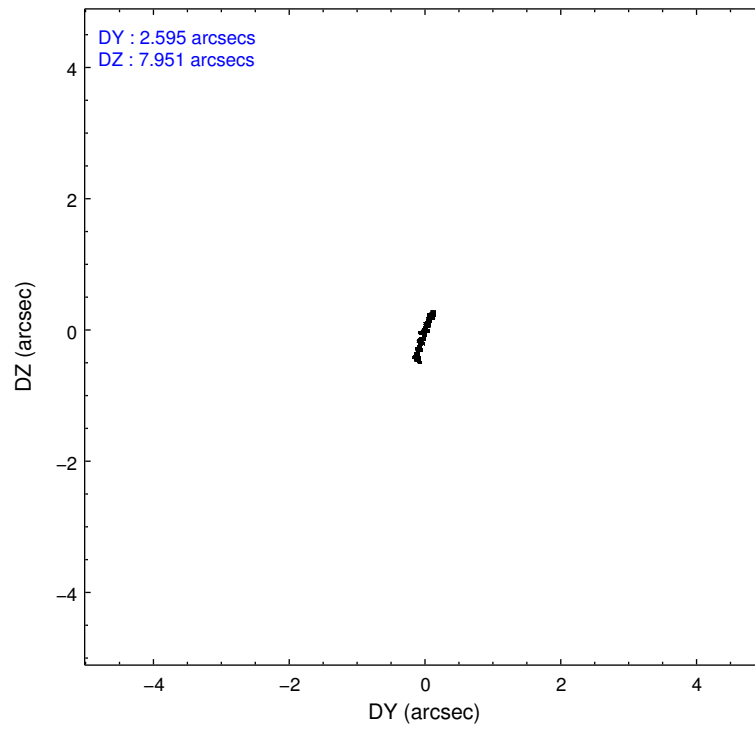
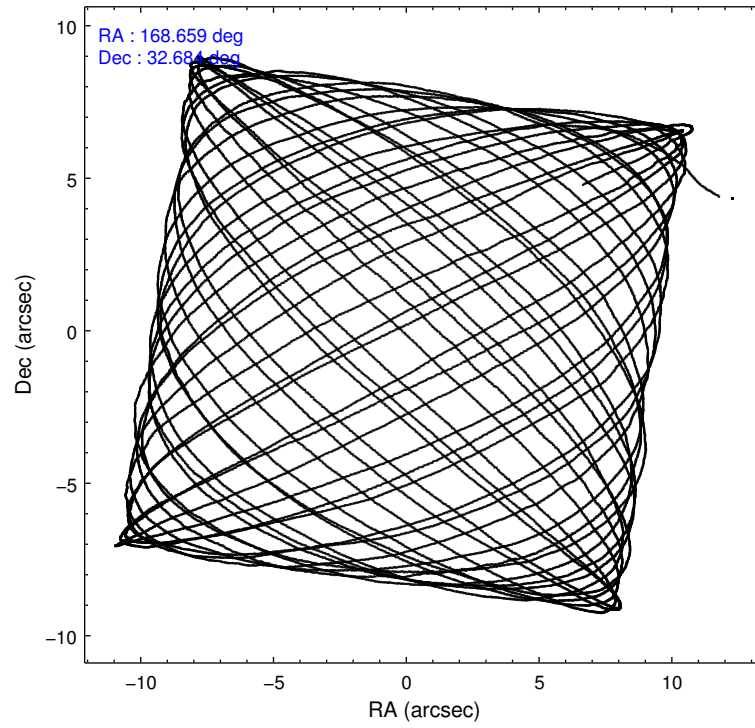
### 2.1.4 Events

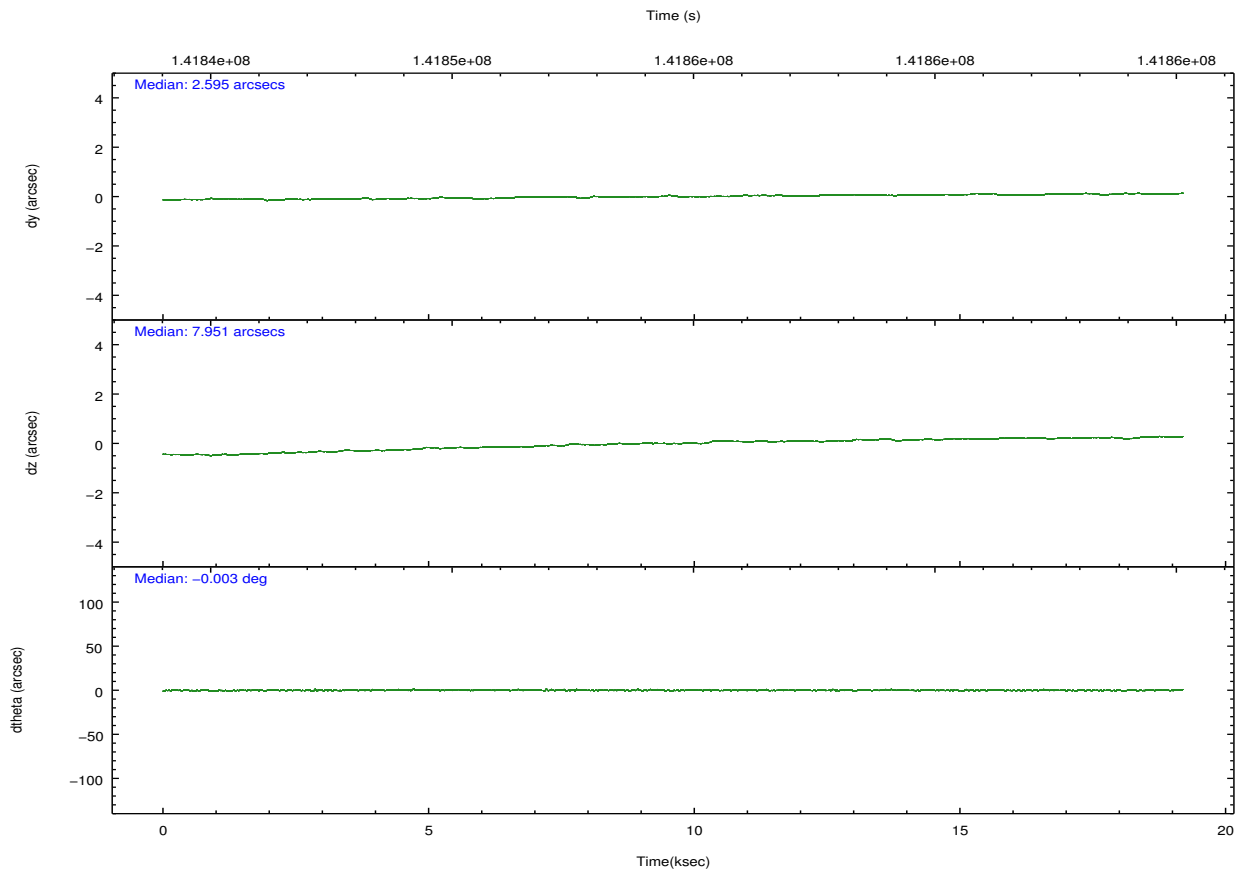
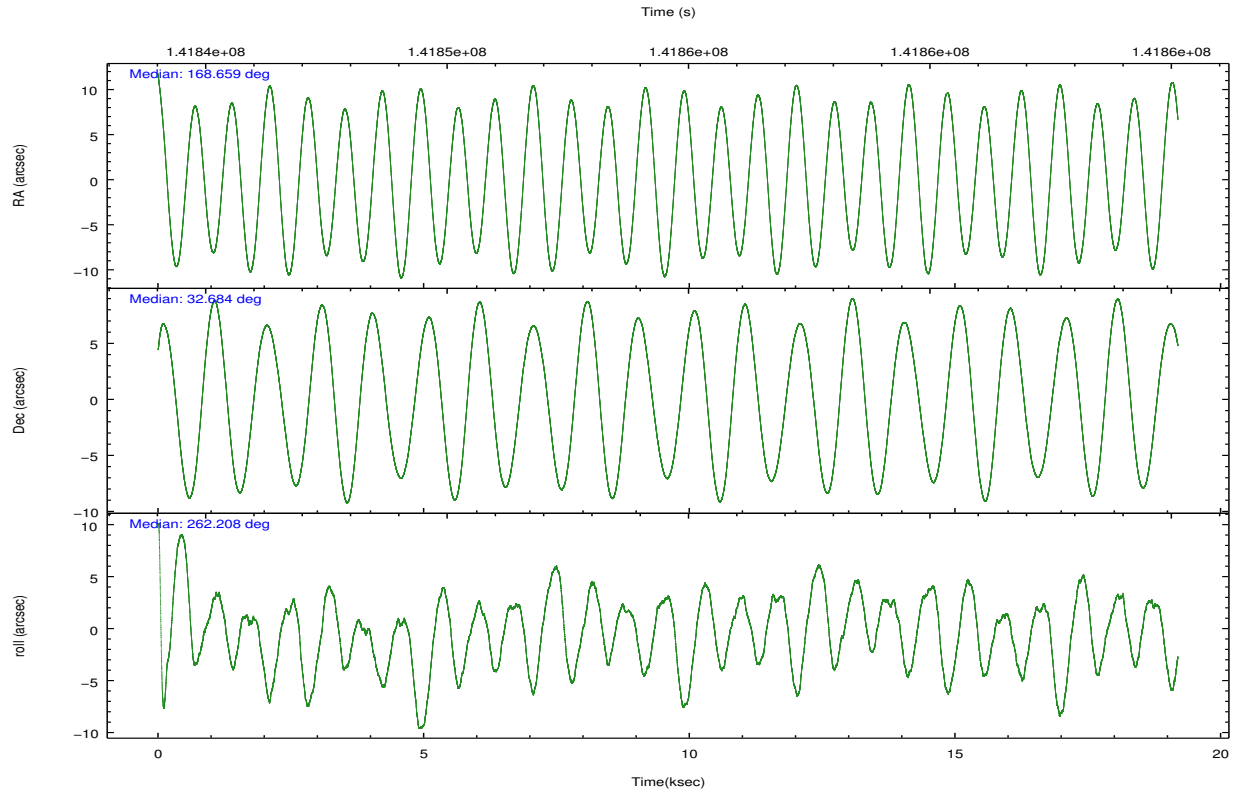
	ccd 2	ccd 3	ccd 5	ccd 6	ccd 7	ccd 8		ccd 2	ccd 3	ccd 5	ccd 6	ccd 7	ccd 8
level 1 events	43690	38768	68456	39966	54256	50793	grade 0 events	2192	2070	17240	2110	3784	3176
rejected events	38564	34035	26030	34832	25347	40826		5%	5%	25%	5%	6%	6%
rejected %	88%	87%	38%	87%	46%	80%	grade 1 events	18	16	79	12	53	21
								0%	0%	0%	0%	0%	0%
							grade 2 events	954	792	7929	857	5906	1995
								2%	2%	11%	2%	10%	3%
							grade 3 events	639	605	1913	675	2897	1062
								1%	1%	2%	1%	5%	2%
							grade 4 events	615	572	1854	678	2809	1021
								1%	1%	2%	1%	5%	2%
							grade 5 events	1250	1268	4018	1421	4287	1726
								2%	3%	5%	3%	7%	3%
							grade 6 events	726	694	13495	816	13514	2713
								1%	1%	19%	2%	24%	5%
							grade 7 events	37296	32751	21928	33397	21006	39079
								85%	84%	32%	83%	38%	76%

## 2.2 Compared Parameters

Parameter	Planned	Actual	Parameter	Planned	Actual
Instrument	ACIS	ACIS	Obspar format version number	7	7
Detector	ACIS-235678	ACIS-235678	Obspar file type	PREDICTED	ACTUAL
Grating	NONE	NONE	Obspar update status	NONE	UPDATED
Data mode	FAINT	FAINT	Number of optional ACIS chips dropped	0	0
Observation mode	POINTING	POINTING	On-chip summing requested	N	N
[deg] Pointing RA	168.645916	168.658546276475	Subarray requested	CUSTOM	1/4
[deg] Pointing Dec	32.708447	32.68337881450263	Subarray start row	385	385
[deg] Pointing Roll	262.064833	262.2146548519078	Subarray row count	256	256
[mm] SIM focus pos	-0.684267	-0.6828225247311905	Alternating exposures requested	N	N
[mm] SIM defocus	0	0.001444936568705701	[s] Primary exposure time	0.000000	1.1
[mm] SIM translation stage pos	-190.132523	-190.1400660498719			
[mm] SIM translation stage offset	0	0.00754346686406393			
[s] Observation start time (MET)	141845850.184000	141844550.70797			
Observation start date	2002-06-30T17:36:26	2002-06-30T17:15:50			
[s] Observation end time (MET)	141864173.184000	141864487.98379			
Observation end date	2002-06-30T22:41:49	2002-06-30T22:48:07			
Read mode	TIMED	TIMED			

## 2.3 Aspect



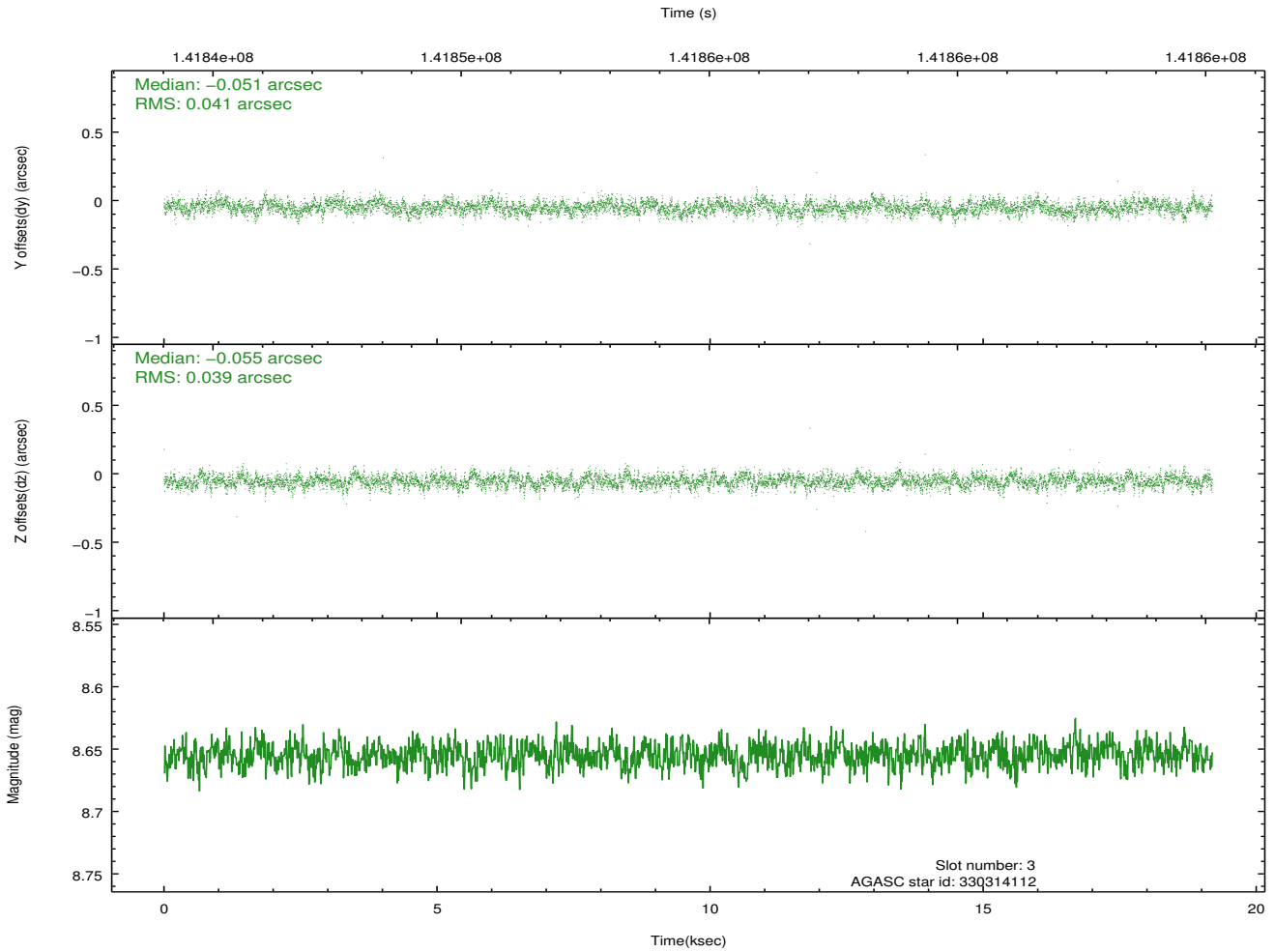
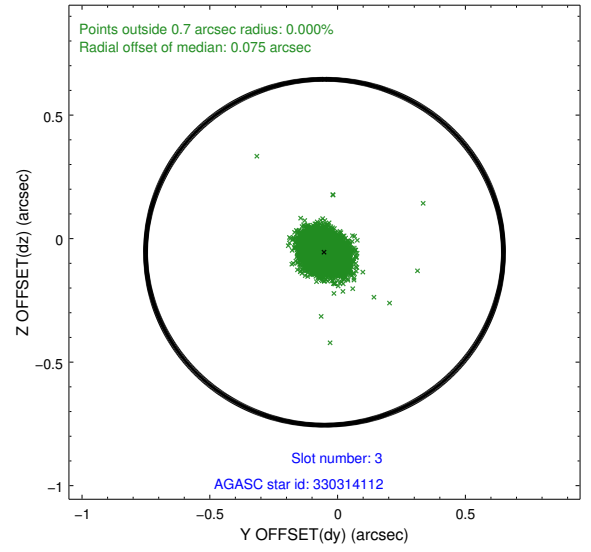
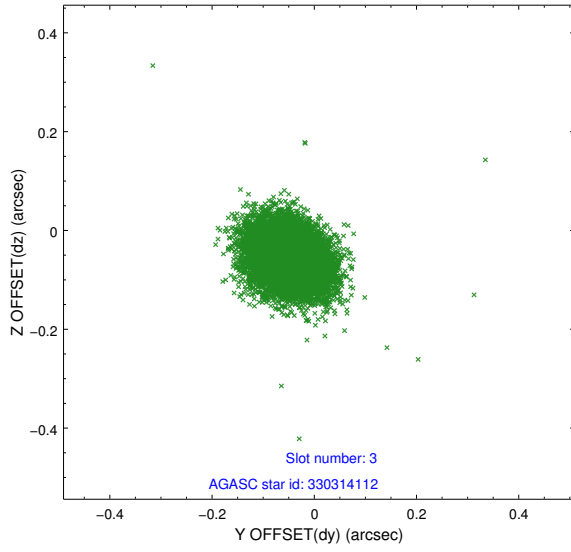


### Slot Statistics

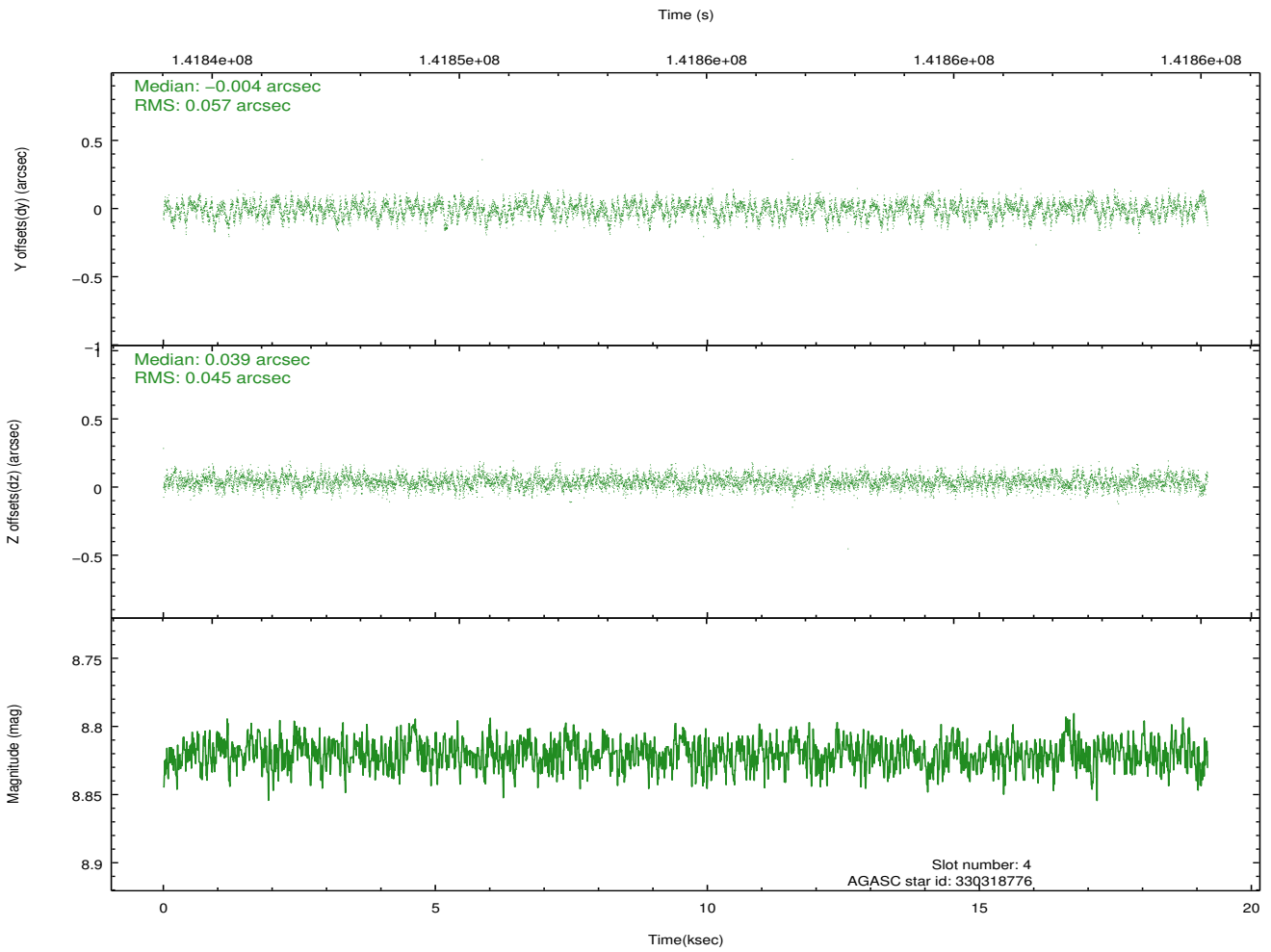
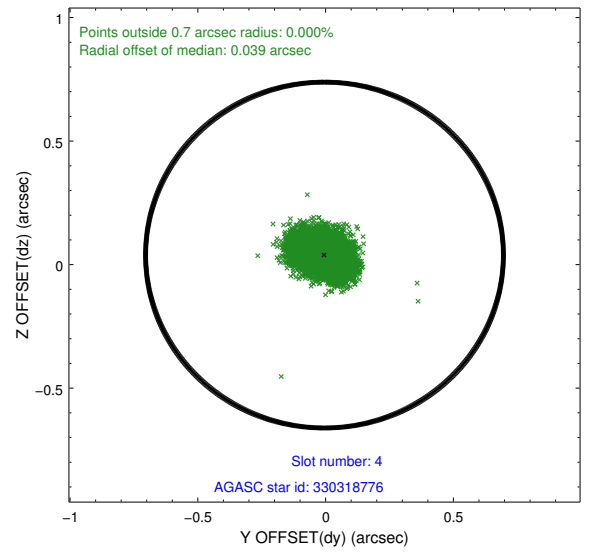
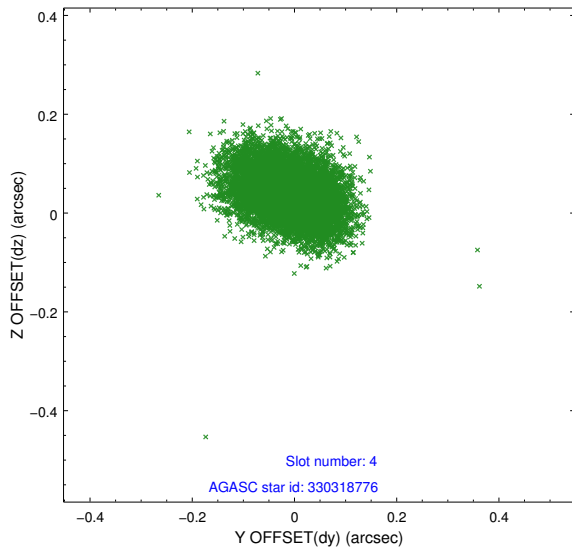
slot	status	id	mag	n_pts	med_dy	med_dz	dr1	dr2	ra	dec	mean_y	mean_z
0	FID	ACIS-S-2	7.11	4682	-0.002	0.011	0.008	0.013	0.000000	0.000000	-755.24	-1729.08
1	FID	ACIS-S-4	7.20	4681	-0.047	-0.002	0.006	0.012	0.000000	0.000000	2157.92	179.15
2	FID	ACIS-S-5	7.23	4680	0.018	-0.000	0.008	0.014	0.000000	0.000000	-1807.79	173.09
3	GUIDE	330314112	8.65	9361	-0.051	-0.055	0.059	0.097	168.786435	32.997677	-1089.09	275.73
4	GUIDE	330318776	8.82	9358	-0.004	0.039	0.076	0.125	169.380140	32.881067	-928.83	2111.10
5	GUIDE	330319696	9.00	9355	0.055	-0.062	0.084	0.140	168.037424	32.614753	584.88	-1781.99
6	GUIDE	330310488	9.60	9347	0.119	-0.016	0.093	0.153	168.814332	32.160079	1885.22	780.34
7	GUIDE	330316536	9.35	9359	-0.119	0.091	0.112	0.178	169.386658	33.276438	-2339.73	1924.13

## 2.4 Star Slots

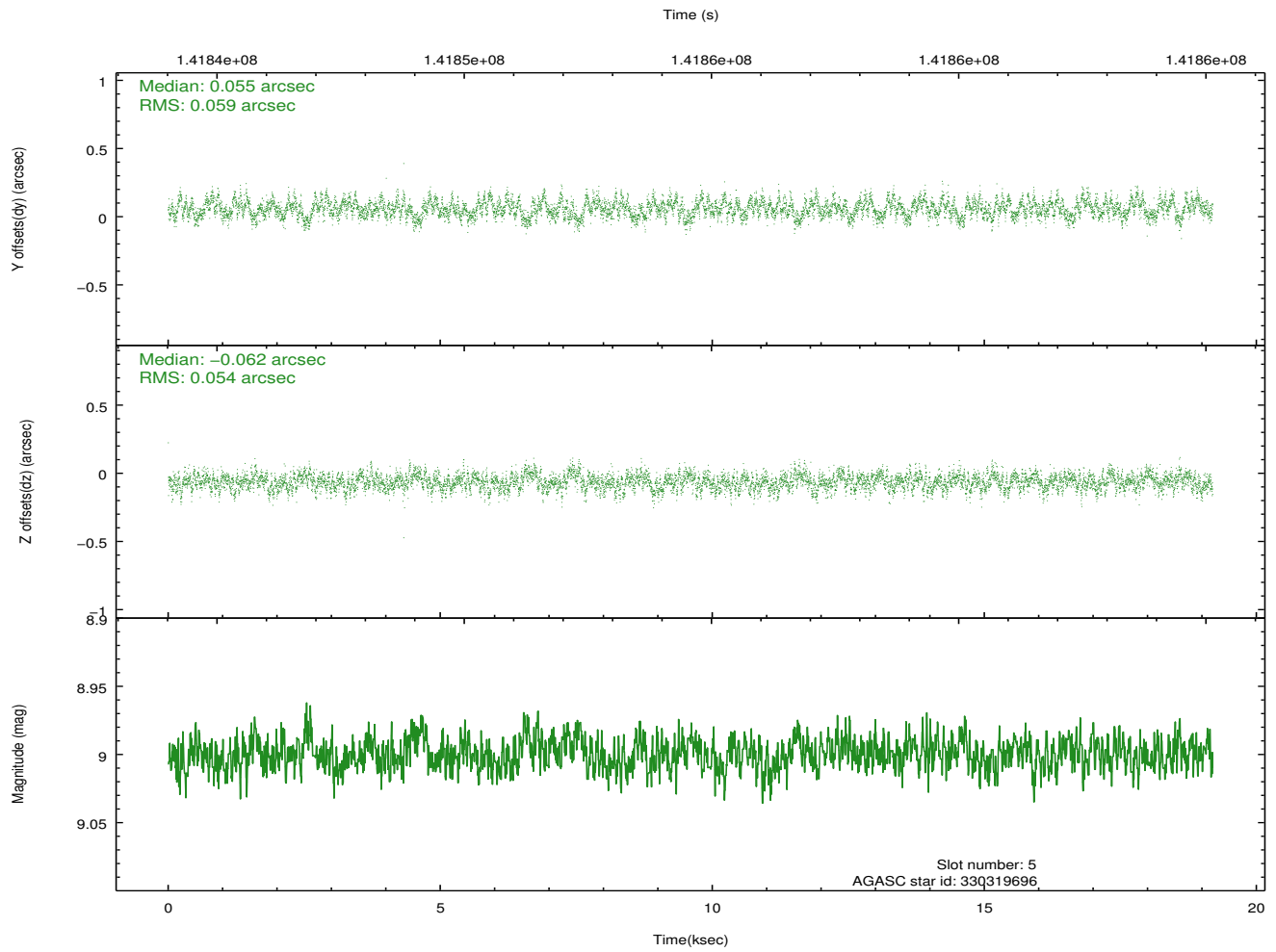
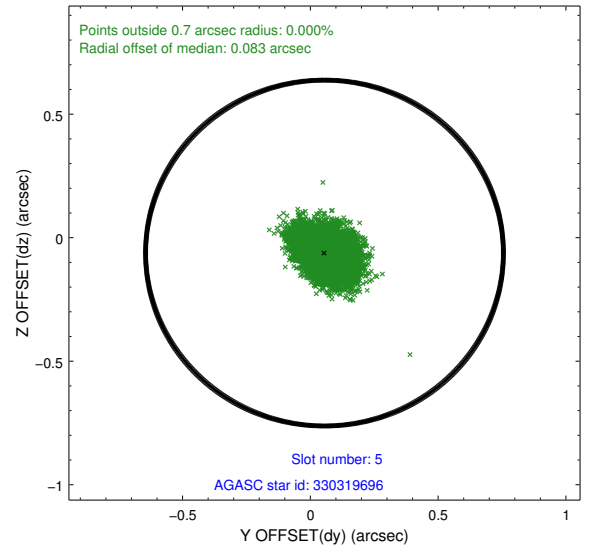
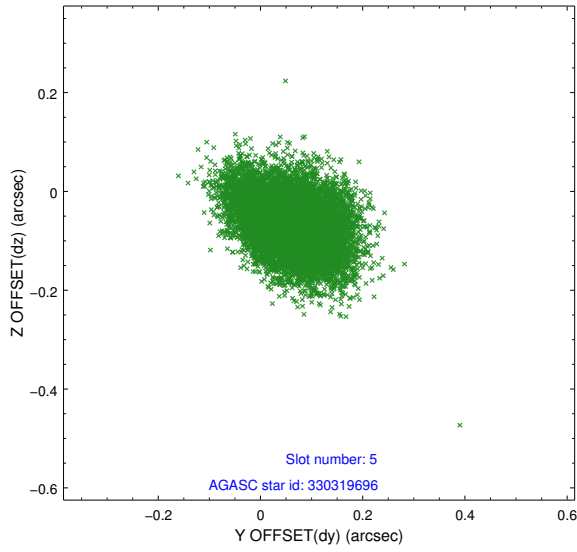
### 2.4.1 Slot 3



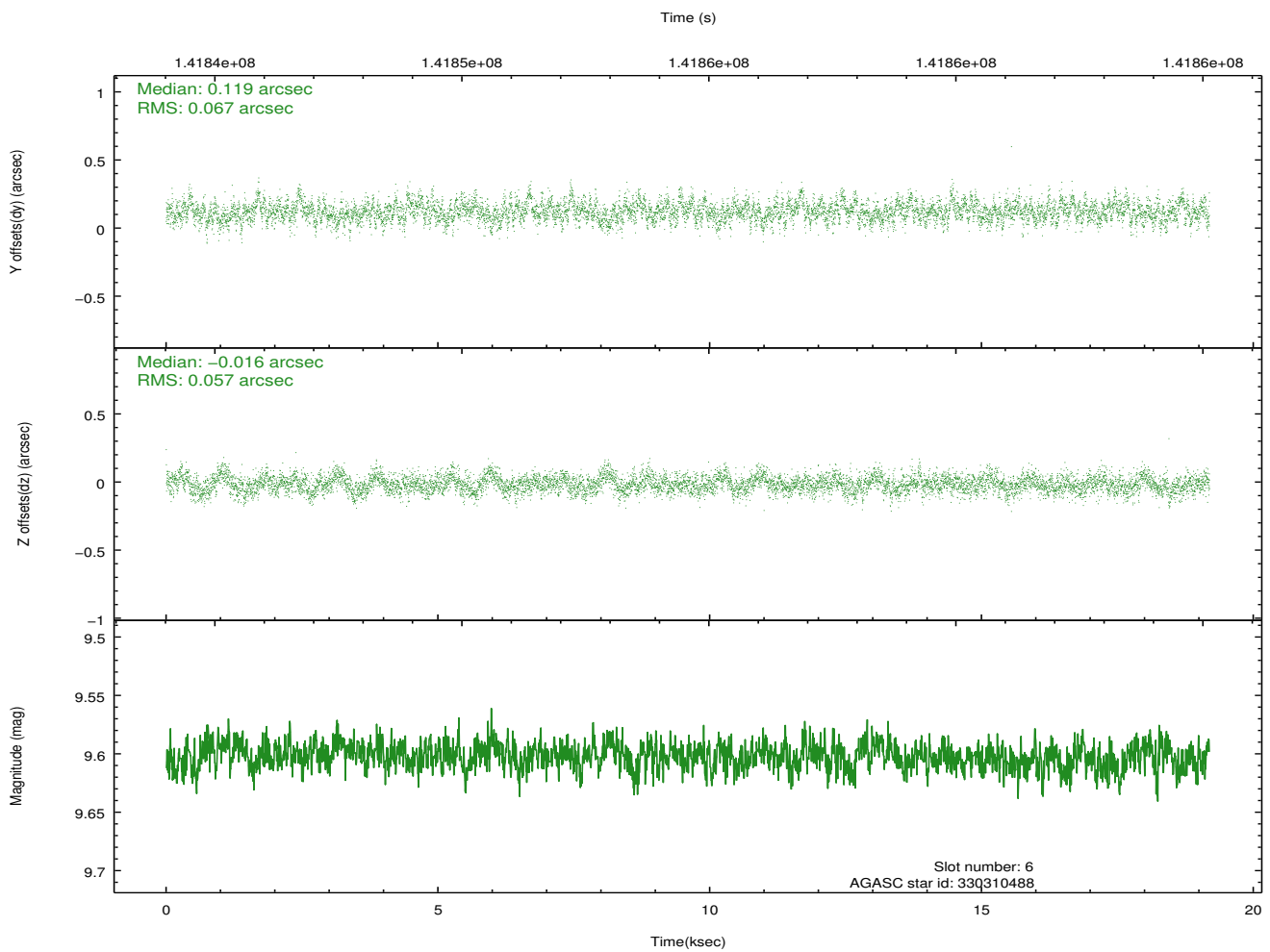
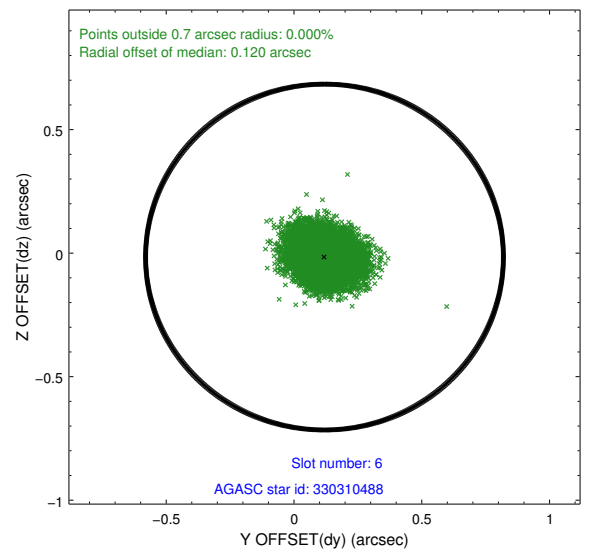
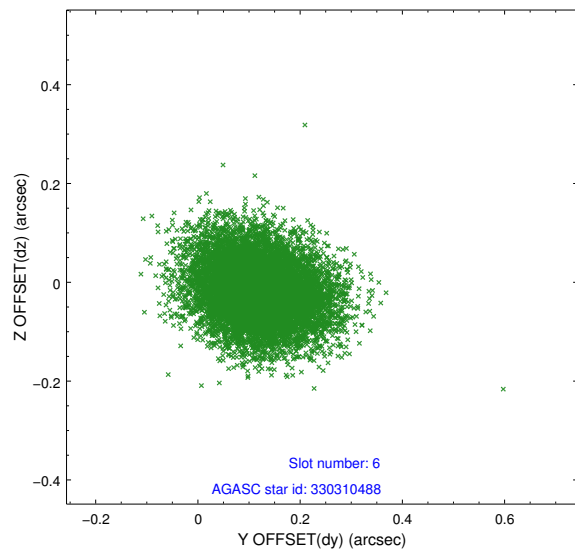
### 2.4.2 Slot 4



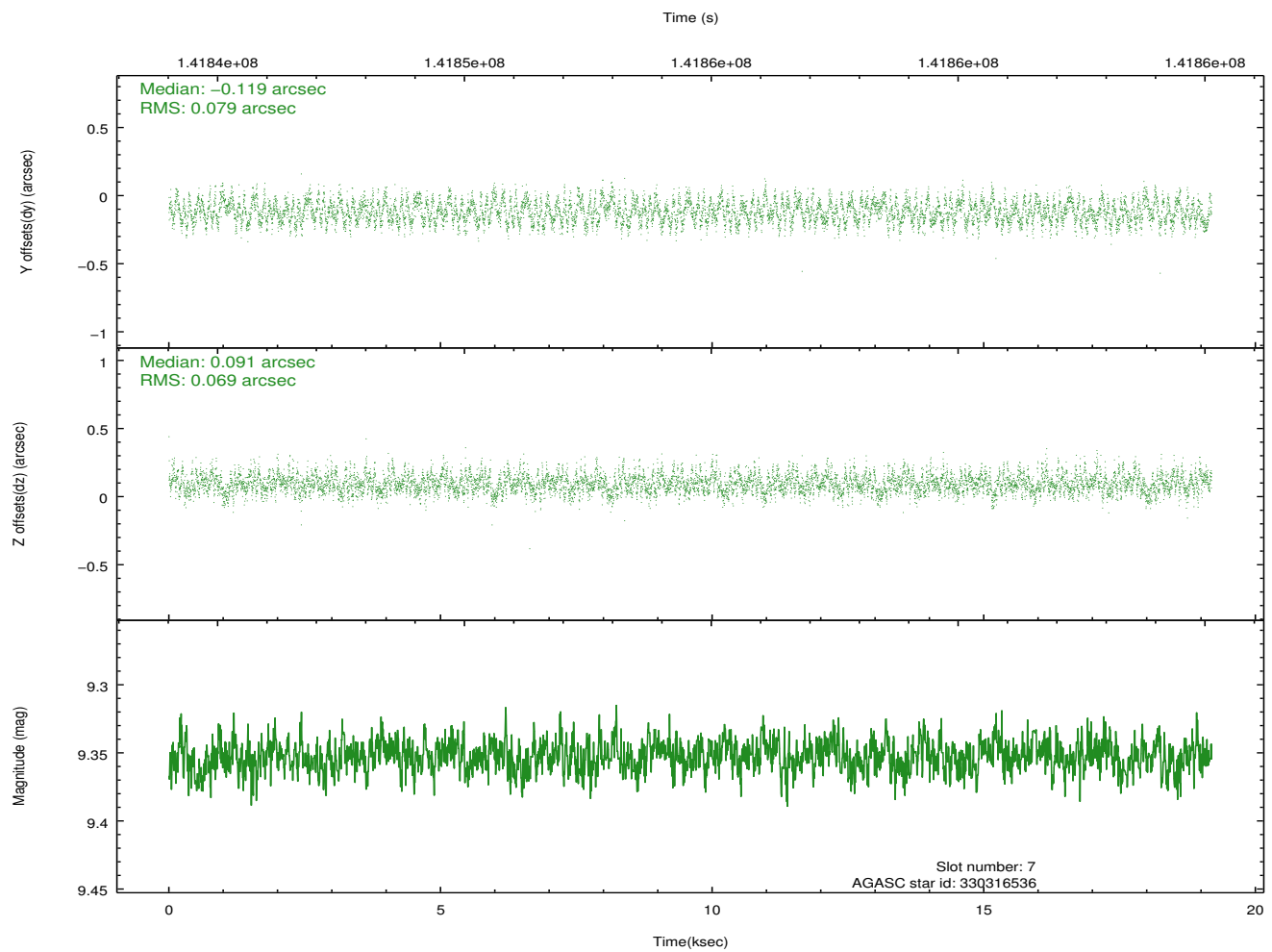
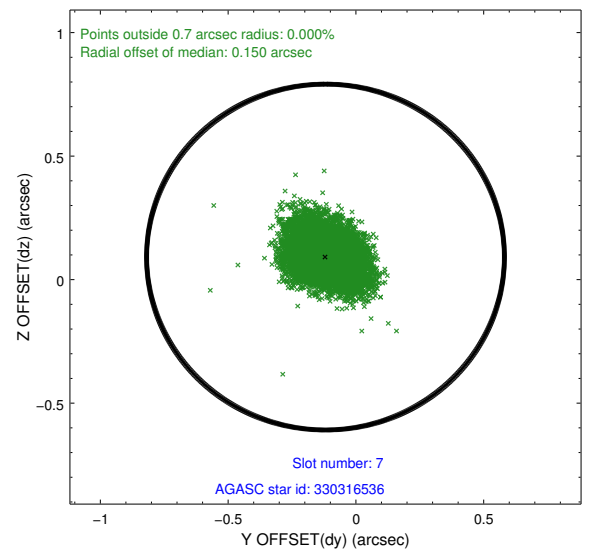
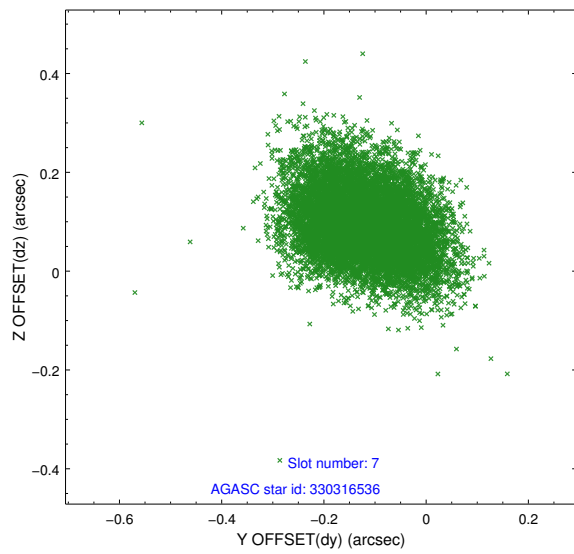
### 2.4.3 Slot 5



### 2.4.4 Slot 6

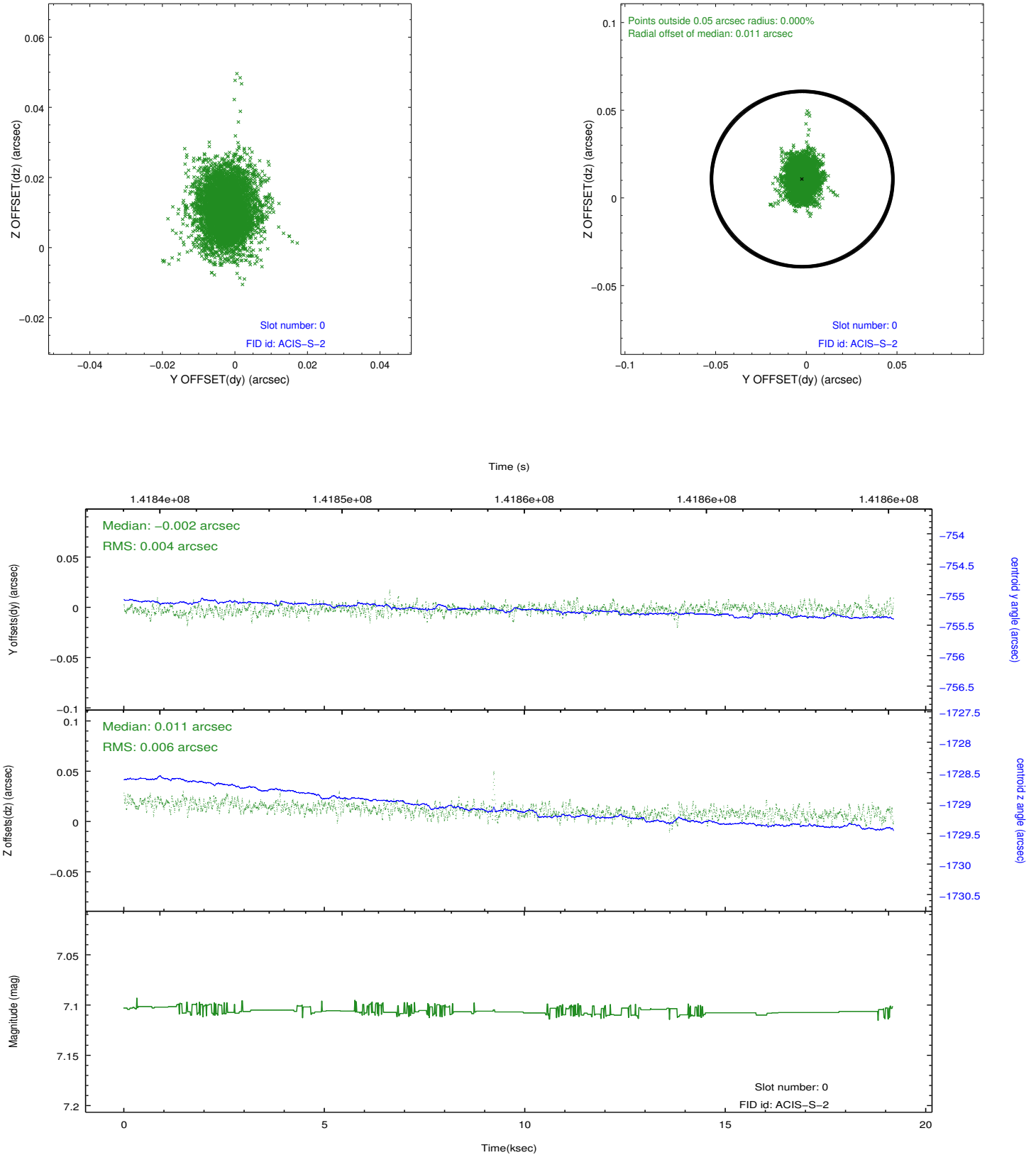


## 2.4.5 Slot 7

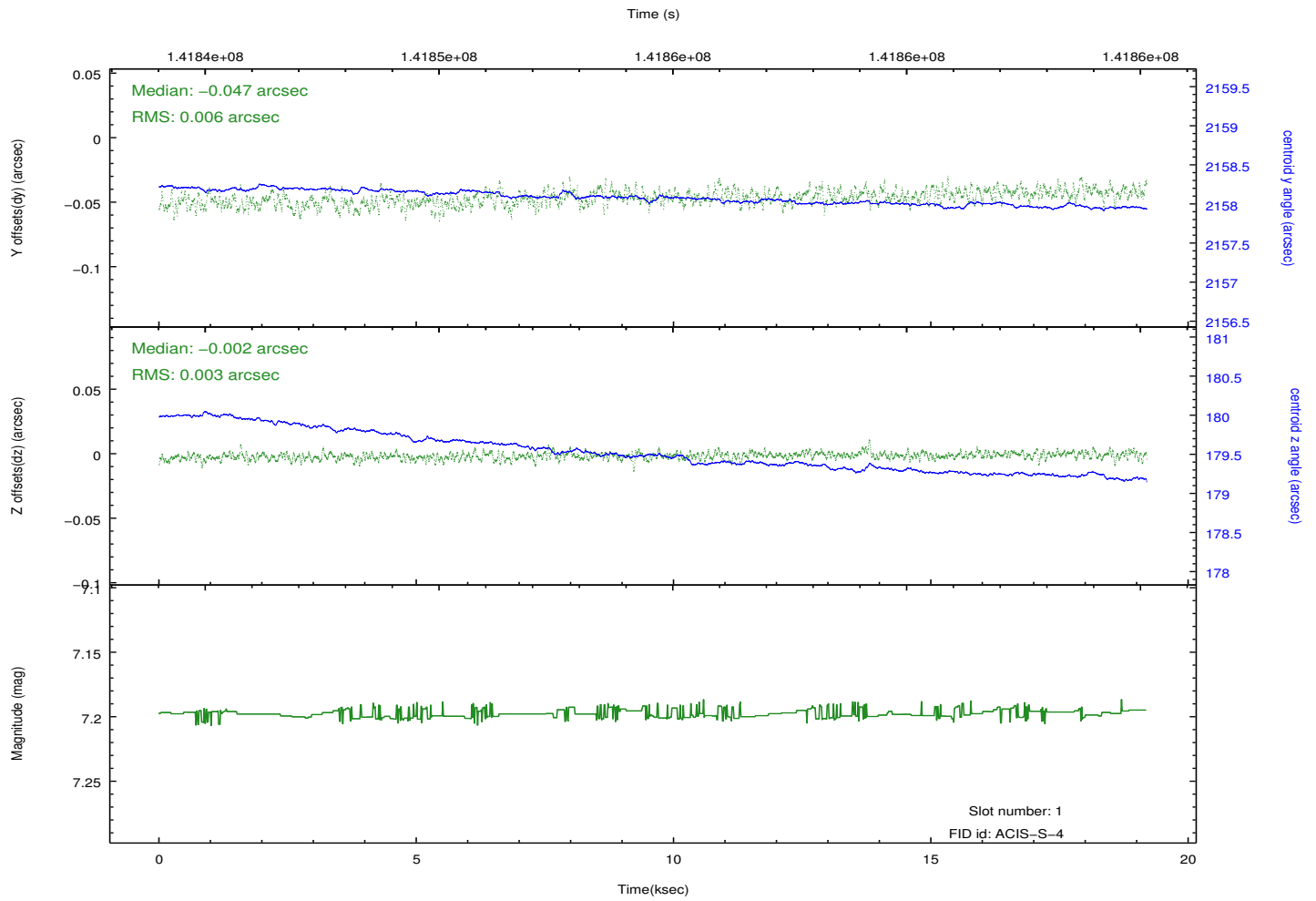
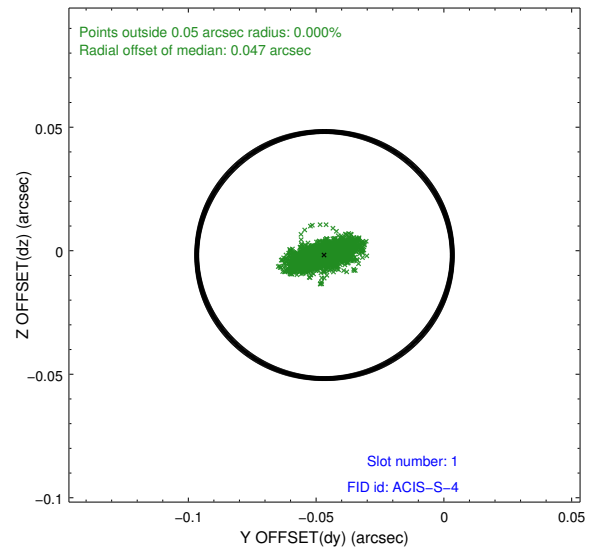
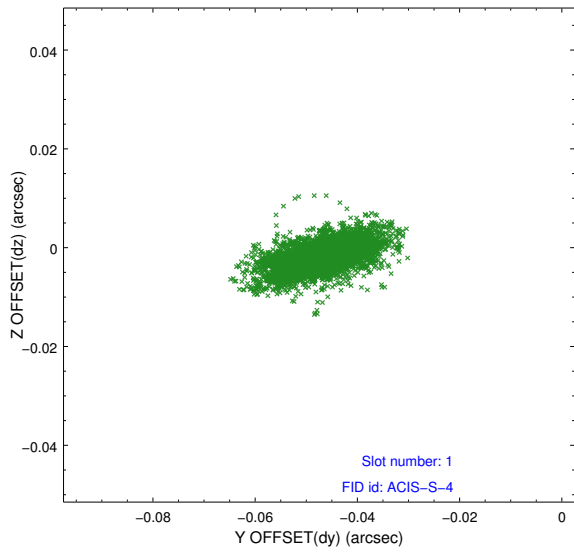


## 2.5 FID Slots

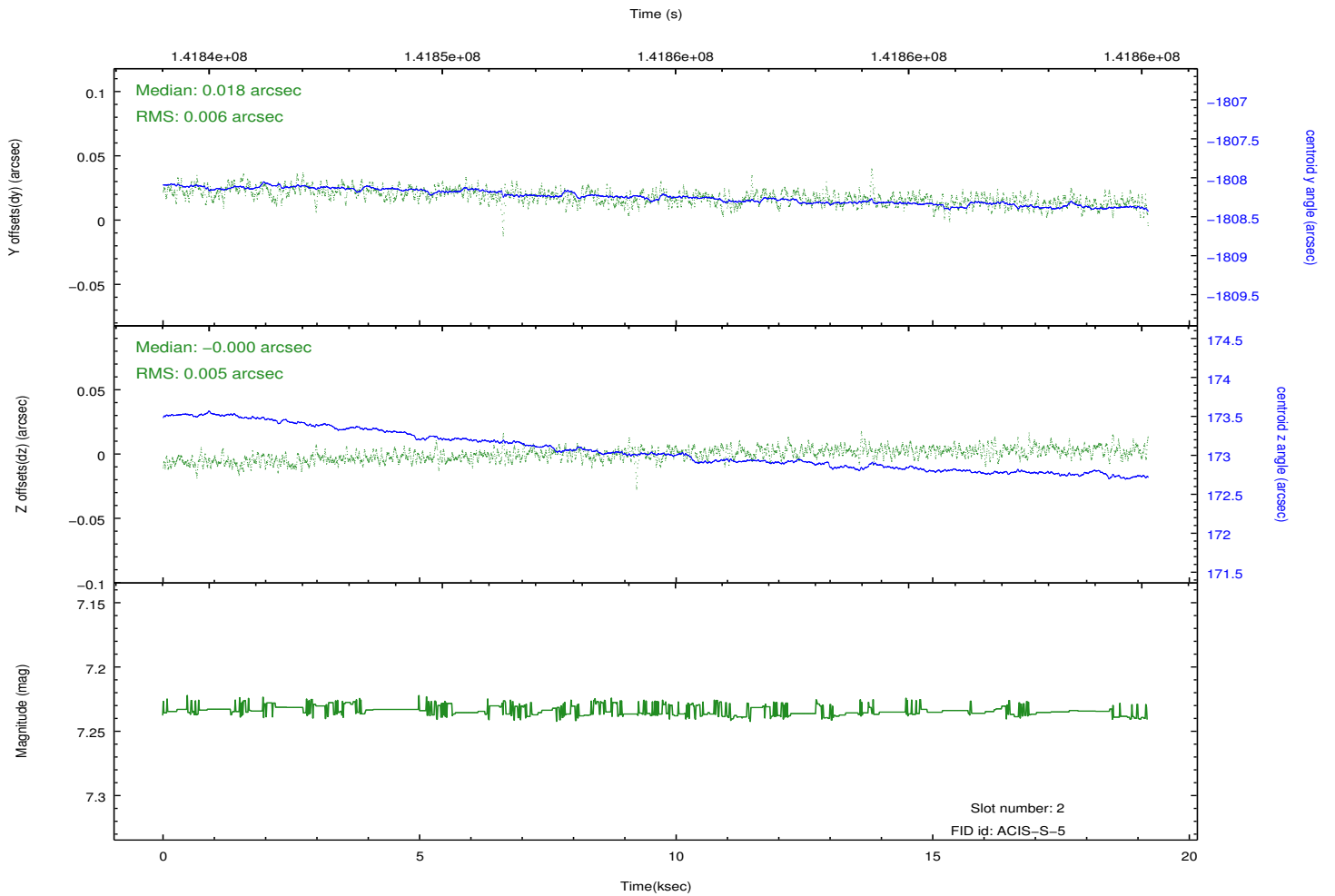
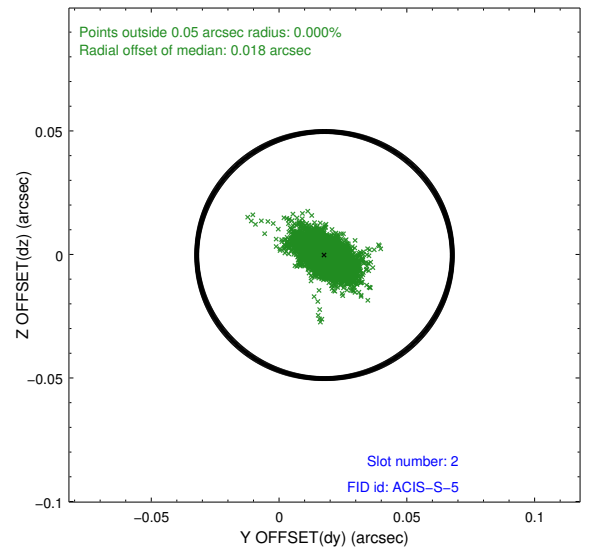
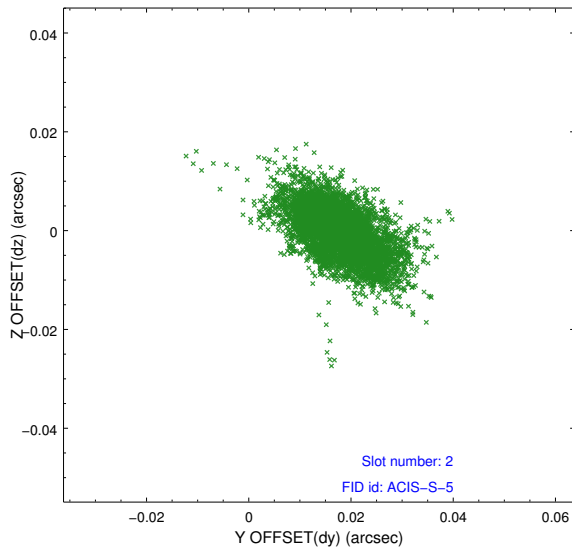
### 2.5.1 Slot 0



## 2.5.2 Slot 1



### 2.5.3 Slot 2



# A Summary

## A.1 Status

V&V Scientist	Beth Sundheim
V&V Date (YYYY-MM-DD)	2012.10.19
V&V Edition	1
V&V Disposition and Status	OK
V&V Charge Time	18.875

## A.2 Comments