

# V&V Reference Report

## L2 ASCDS Version : 8.4.5

Observation 3187 - L2 Version 3  
Chandra X-Ray Center

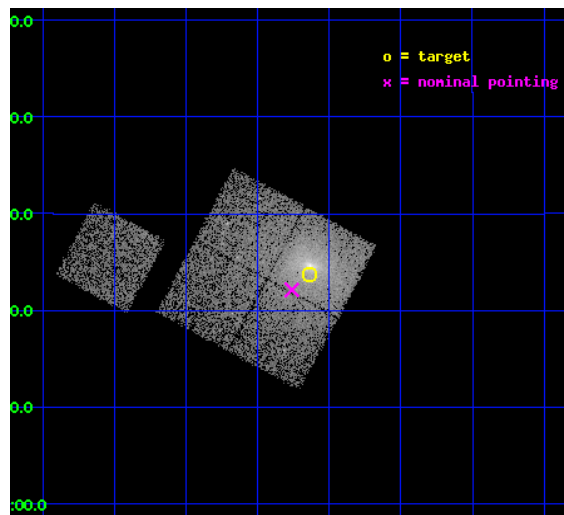
L2 Processing Date : Sep 30 2012

## Contents

<b>1</b>	<b>Front</b>	<b>2</b>
<b>2</b>	<b>OBI</b>	<b>3</b>
2.1	OBI . . . . .	3
2.1.1	Images . . . . .	3
2.1.2	Bias . . . . .	3
2.1.3	Parameters . . . . .	4
2.1.4	Events . . . . .	4
2.2	Compared Parameters . . . . .	5
2.3	Aspect . . . . .	6
2.4	Star Slots . . . . .	9
2.4.1	Slot 3 . . . . .	9
2.4.2	Slot 4 . . . . .	10
2.4.3	Slot 5 . . . . .	11
2.4.4	Slot 6 . . . . .	12
2.4.5	Slot 7 . . . . .	13
2.5	FID Slots . . . . .	14
2.5.1	Slot 0 . . . . .	14
2.5.2	Slot 1 . . . . .	15
2.5.3	Slot 2 . . . . .	16
<b>A</b>	<b>Summary</b>	<b>17</b>
A.1	Status . . . . .	17
A.2	Comments . . . . .	17

# 1 Front

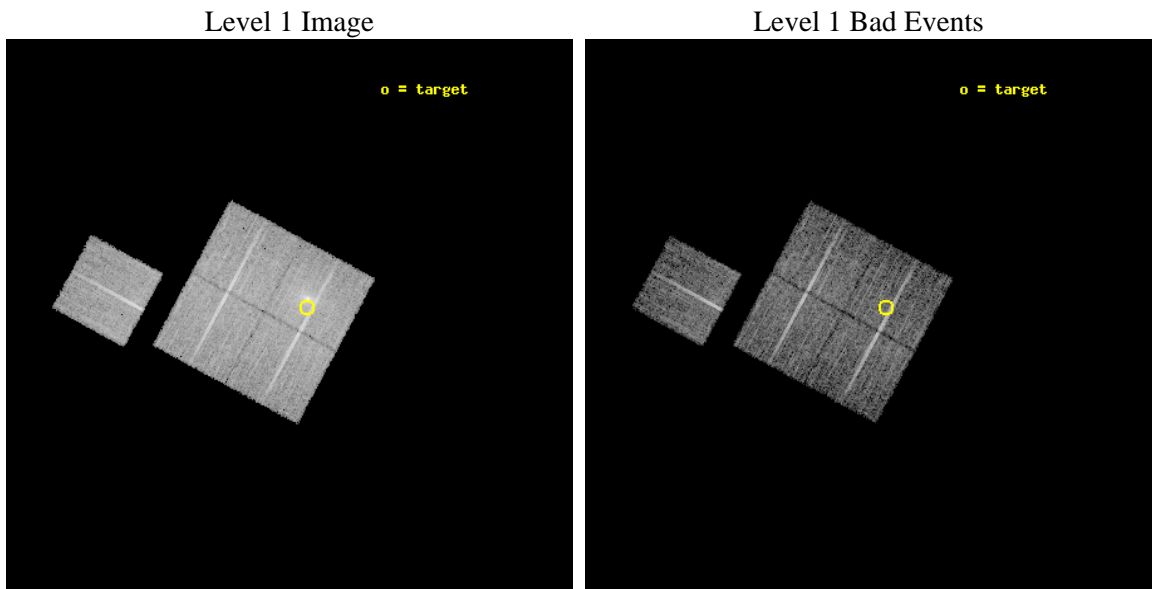
seq_num	800187	Sequence number
obs_id	3187	Observation id
title	OLEGS OR FOSSIL GROUPS -- STUDYING EVOLVED GALAXY SYSTEMS	Proposal
observer	Dr. Stephen Murray	Principal investigator
object	NGC1550-B	Source name
dtcycle	0	&#160
cycle	P	events from which exps? Prim/Second/Both
ra_targ	64.90938	Observer's specified target RA [deg]
dec_targ	2.395	Observer's specified target Dec [deg]
ra_nom	64.940289266406	Nominal RA [deg]
dec_nom	2.3688021570778	Nominal Dec [deg]
roll_nom	298.37975191473	Nominal Roll [deg]
revision	3	Processing version of data
ontime	9772.7724956423	Sum of GTIs [s]
lifetime	9645.0840283763	Lifetime [s]
ontime0	9769.590465486	Sum of GTIs [s]
ontime1	9772.7724956423	Sum of GTIs [s]
ontime2	9769.6725654006	Sum of GTIs [s]
ontime3	9769.7135854959	Sum of GTIs [s]
ontime6	9769.5494454056	Sum of GTIs [s]
l2events	47080	Number of level 2 events



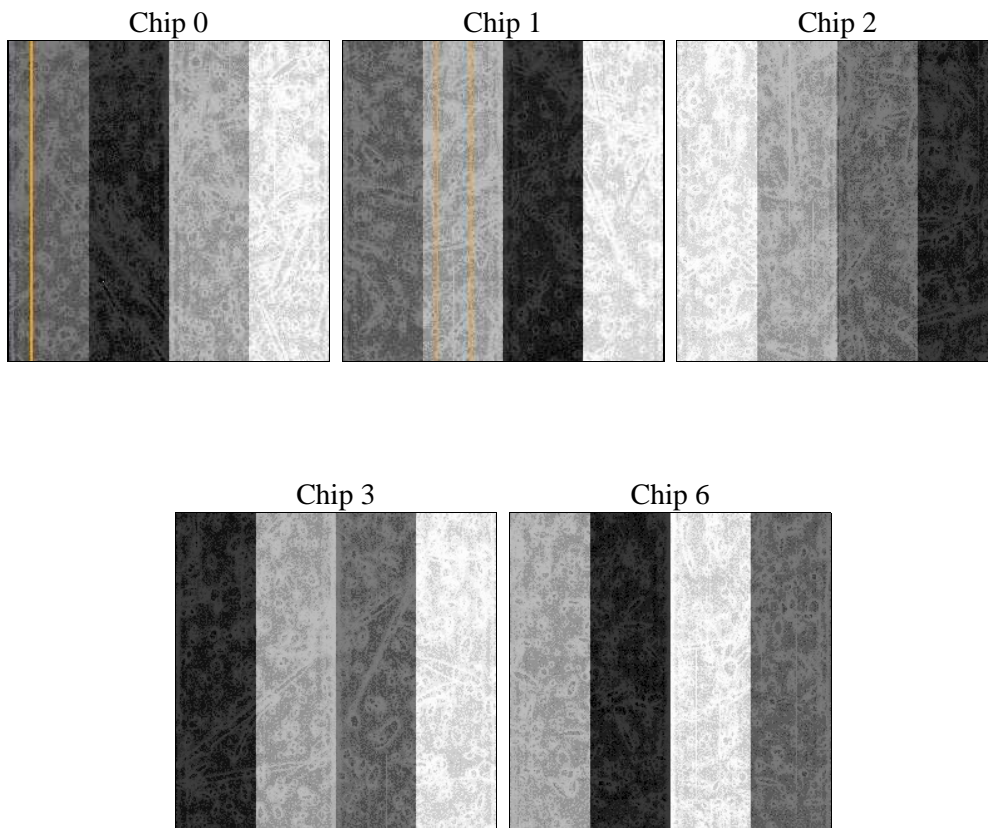
## 2 OBI

### 2.1 OBI

#### 2.1.1 Images



#### 2.1.2 Bias



### 2.1.3 Parameters

obi_num	0	Obi number	sched_exp_time	10000.000000	[s] Scheduled observation exposure time
ascdsver	8.4.5	Processing system revision	ontime	9772.7724956423	Sum of GTIs [s]
caldbver	4.5.2	&#160	ontime0	9769.590465486	Sum of GTIs [s]
date	2012-09-30T03:53:55	Date and time of file creation	ontime1	9772.7724956423	Sum of GTIs [s]
revision	3	Processing version of data	ontime2	9769.6725654006	Sum of GTIs [s]
			ontime3	9769.7135854959	Sum of GTIs [s]
			ontime6	9769.5494454056	Sum of GTIs [s]
			l1events	292353	Number of level 1 events

### 2.1.4 Events

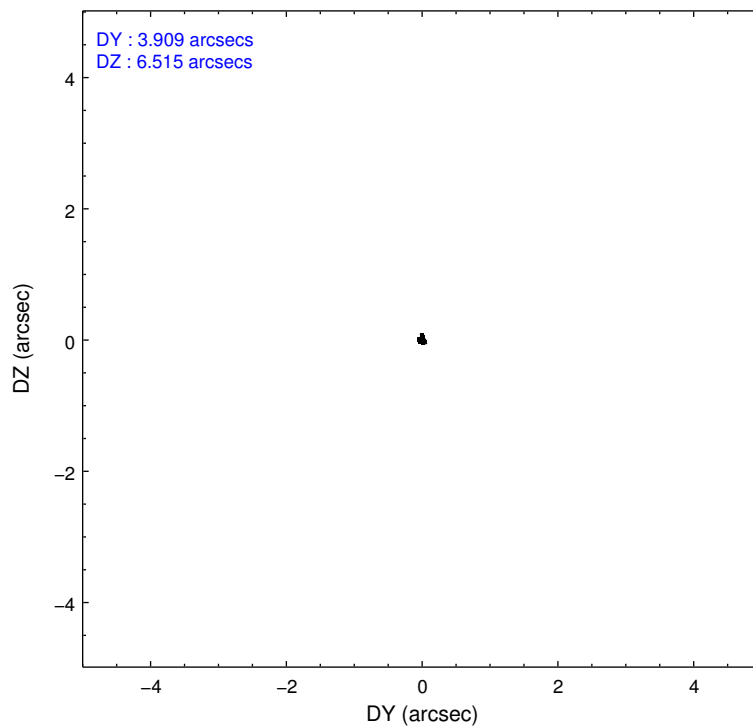
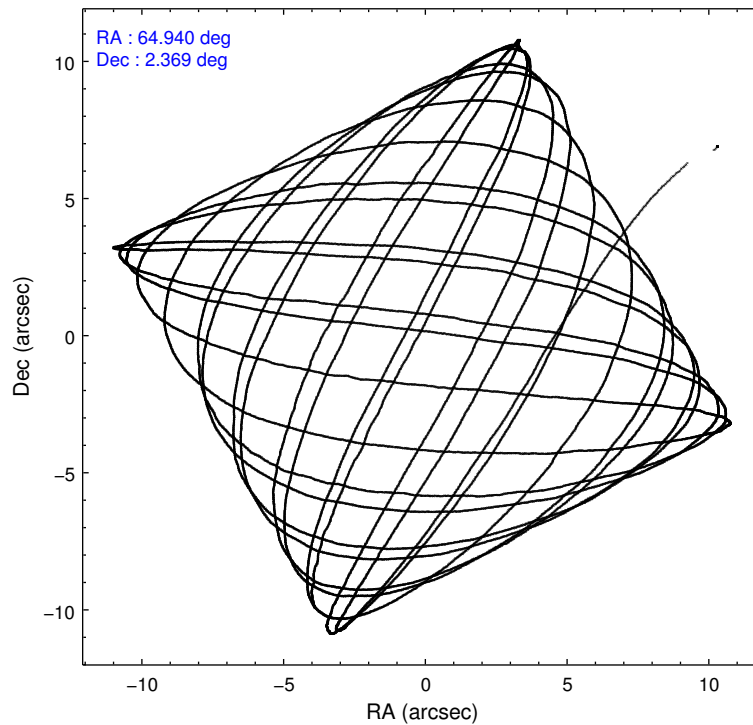
	ccd 0	ccd 1	ccd 2	ccd 3	ccd 6
level 1 events	53063	70100	58084	57849	53257
rejected events	44962	44757	51305	49794	47764
rejected %	84%	63%	88%	86%	89%

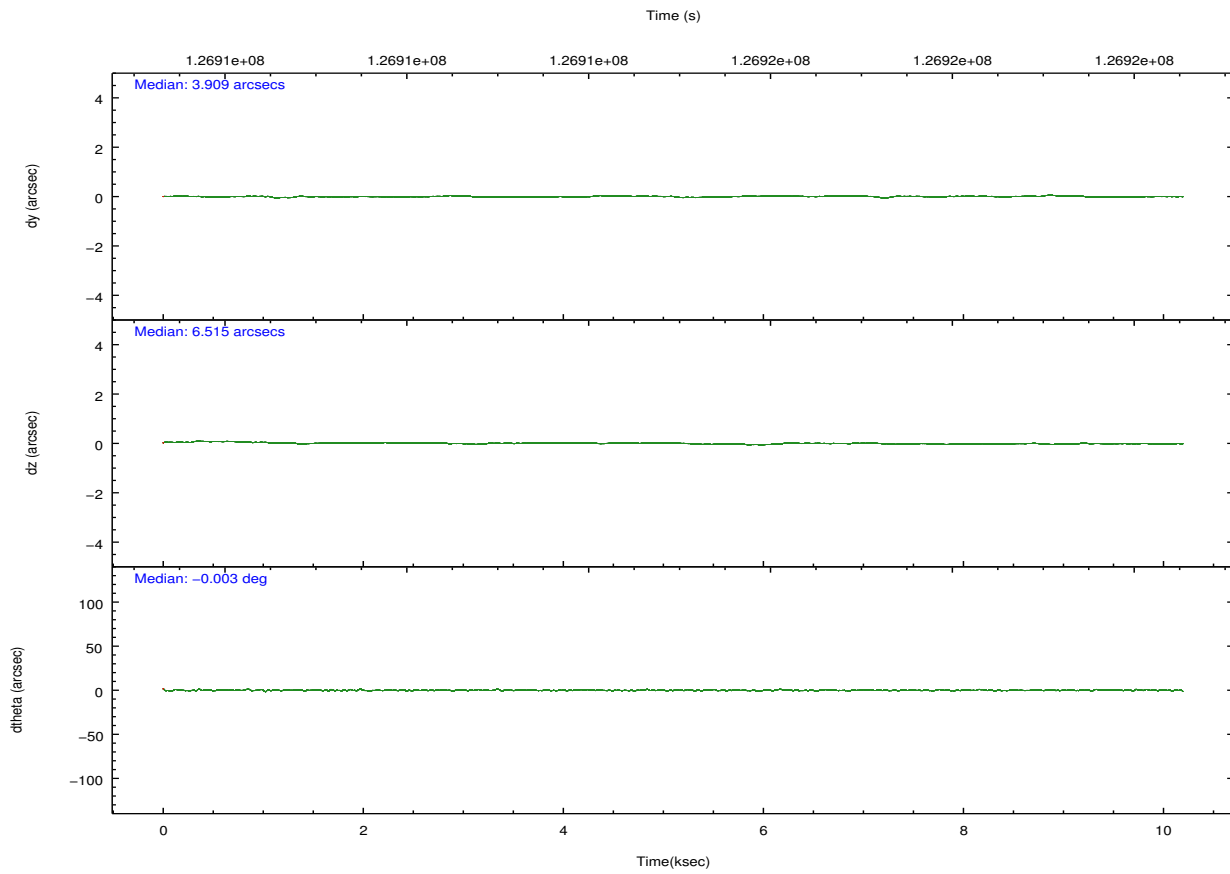
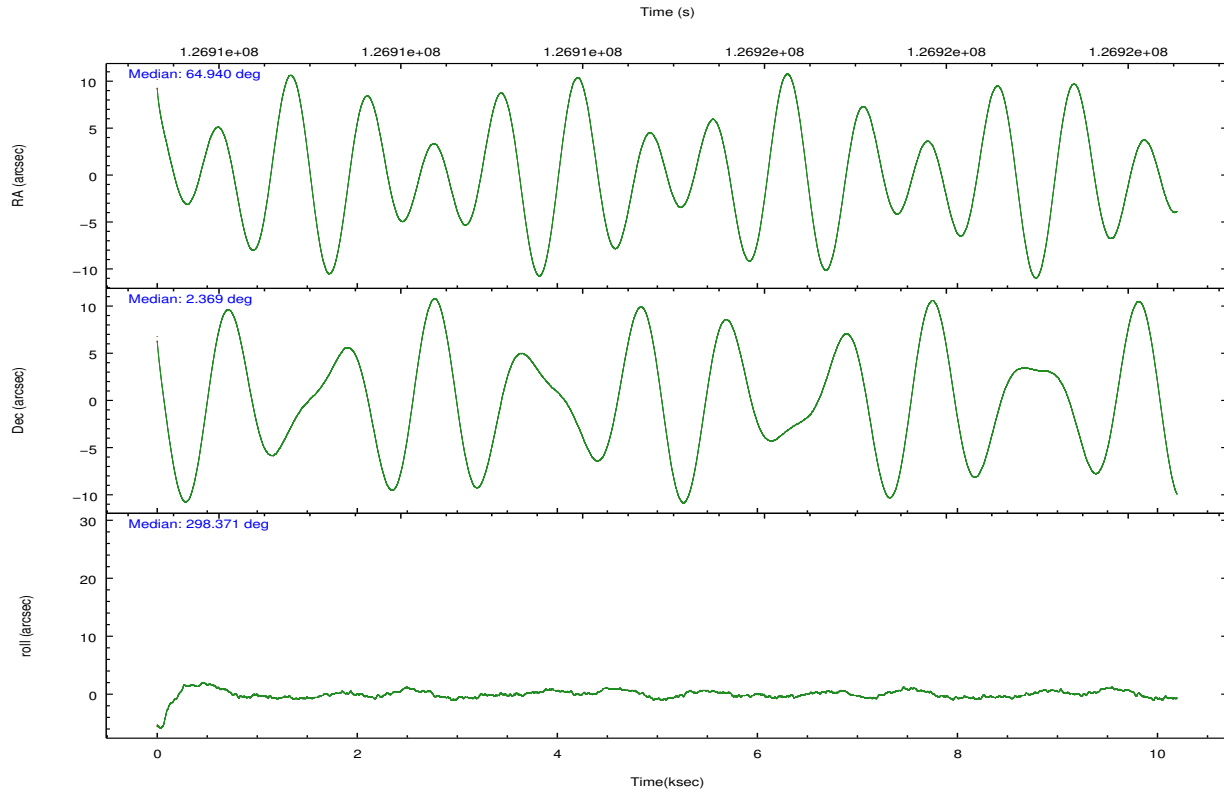
	ccd 0	ccd 1	ccd 2	ccd 3	ccd 6
grade 0 events	4242	18903	3249	4435	2078
	7%	26%	5%	7%	3%
grade 1 events	38	114	25	43	24
	0%	0%	0%	0%	0%
grade 2 events	1443	2789	1399	1343	1124
	2%	3%	2%	2%	2%
grade 3 events	688	1118	570	670	638
	1%	1%	0%	1%	1%
grade 4 events	660	1147	618	628	590
	1%	1%	1%	1%	1%
grade 5 events	1645	1890	1561	1966	1867
	3%	2%	2%	3%	3%
grade 6 events	1077	1402	948	983	1065
	2%	2%	1%	1%	1%
grade 7 events	43270	42737	49714	47781	45871
	81%	60%	85%	82%	86%

## 2.2 Compared Parameters

Parameter	Planned	Actual	Parameter	Planned	Actual
Instrument	ACIS	ACIS	Obspar format version number	7	7
Detector	ACIS-01236	ACIS-01236	Obspar file type	PREDICTED	ACTUAL
Grating	NONE	NONE	Obspar update status	NONE	UPDATED
Data mode	VFAINT	VFAINT	Number of optional ACIS chips dropped	0	0
Observation mode	POINTING	POINTING	On-chip summing requested	N	N
[deg] Pointing RA	64.916875	64.9402892664062	Subarray requested	NONE	NONE
[deg] Pointing Dec	2.383136	2.368802157077819	Alternating exposures requested	N	N
[deg] Pointing Roll	298.172033	298.3797519147288	[s] Primary exposure time	0.000000	3.1
[mm] SIM focus pos	-0.782348	-0.7809083437167272			
[mm] SIM defocus	0	0.001439871863259334			
[mm] SIM translation stage pos	-243.592463	-243.5843520998312			
[mm] SIM translation stage offset	10	9.991899096901562			
[s] Observation start time (MET)	126910027.184000	126909650.76414			
Observation start date	2002-01-08T20:46:03	2002-01-08T20:40:50			
[s] Observation end time (MET)	126920027.184000	126920266.68957			
Observation end date	2002-01-08T23:32:43	2002-01-08T23:37:46			
Read mode	TIMED	TIMED			

## 2.3 Aspect



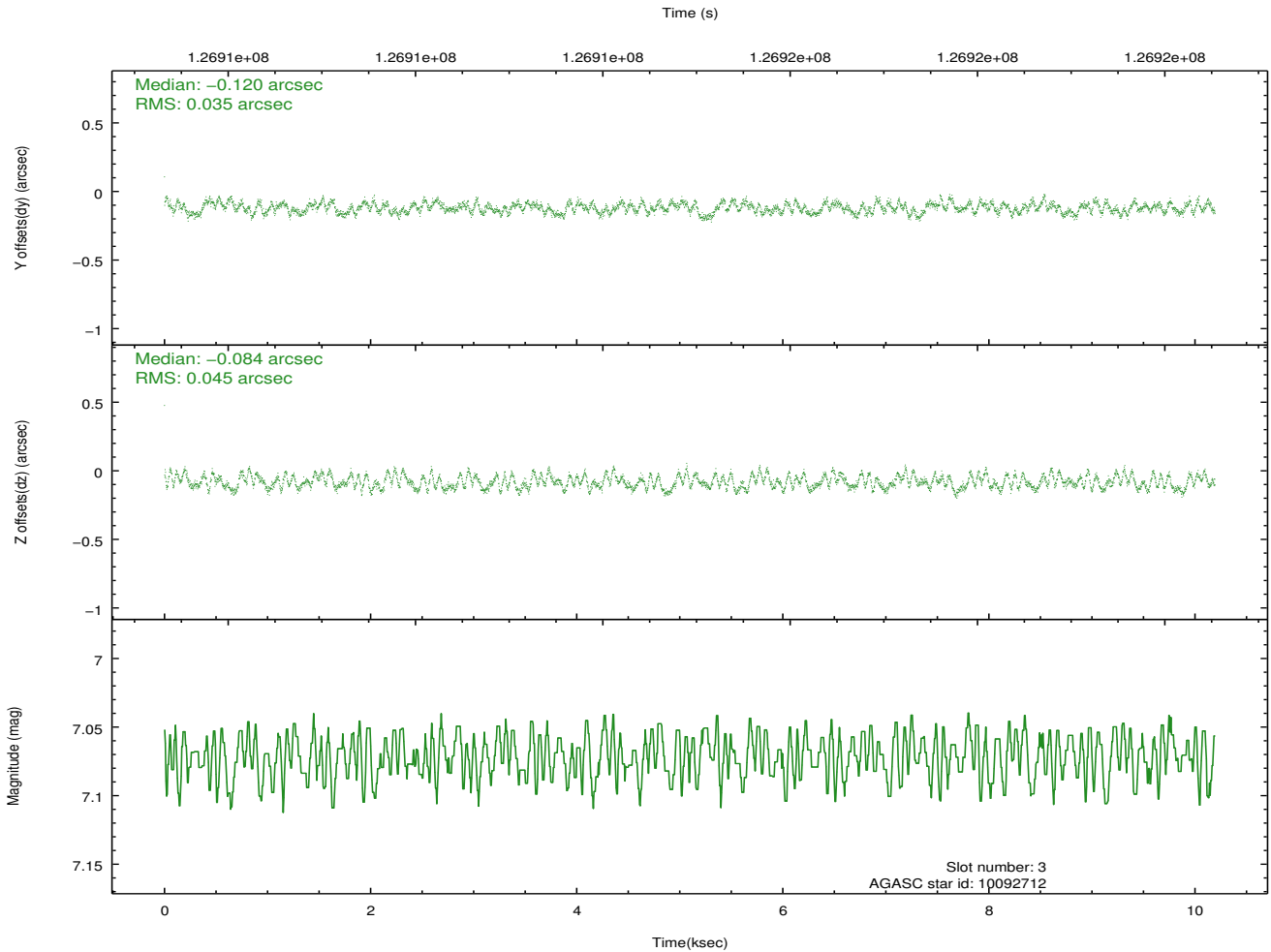
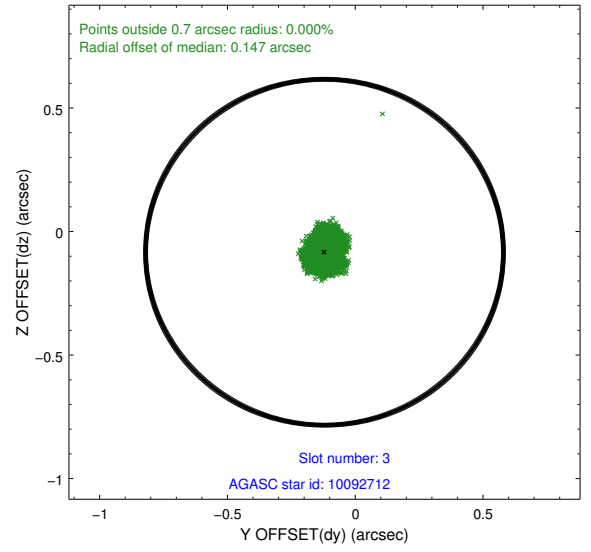
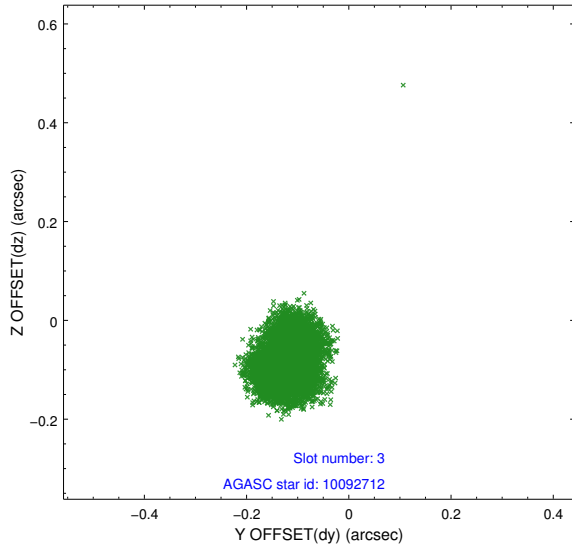


### Slot Statistics

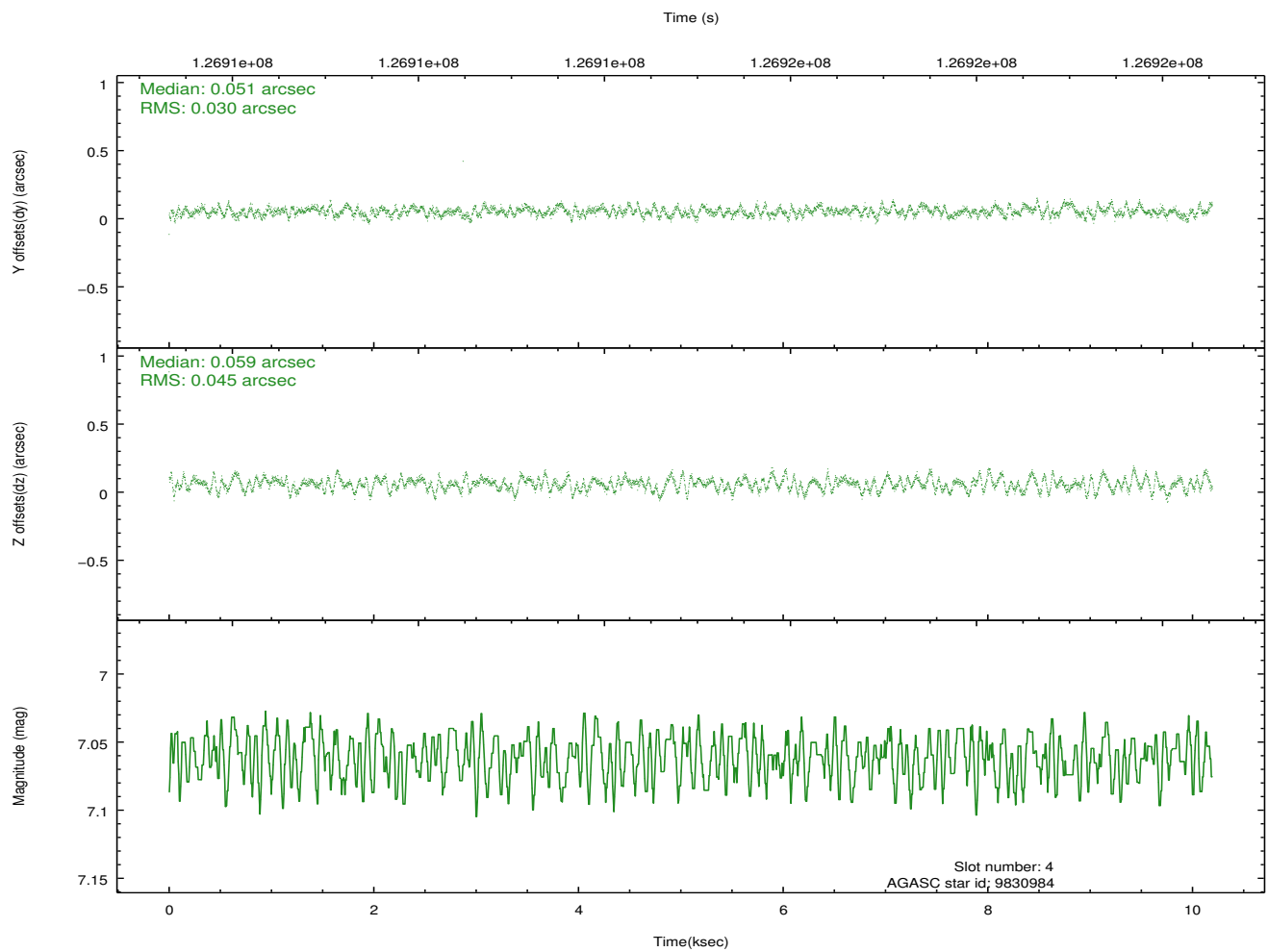
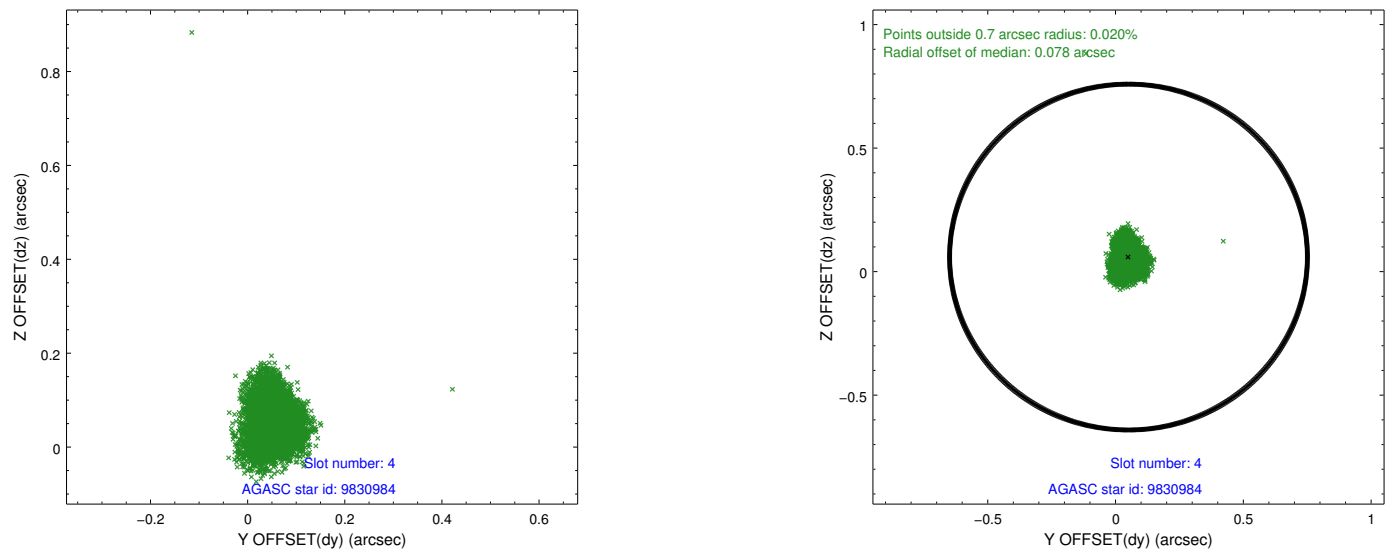
slot	status	id	mag	n_pts	med_dy	med_dz	dr1	dr2	ra	dec	mean_y	mean_z
0	FID	ACIS-I-1	7.28	2486	-0.073	0.113	0.006	0.011	0.000000	0.000000	935.98	-624.41
1	FID	ACIS-I-5	7.25	2486	-0.024	-0.001	0.006	0.010	0.000000	0.000000	-1811.82	1272.74
2	FID	ACIS-I-6	7.25	2486	0.005	-0.043	0.006	0.011	0.000000	0.000000	401.00	1917.82
3	GUIDE	10092712	7.07	4972	-0.120	-0.084	0.063	0.091	64.322459	2.529688	-1474.86	-1636.05
4	GUIDE	9830984	7.06	4972	0.051	0.059	0.057	0.091	65.442956	2.390106	870.58	1679.42
5	GUIDE	9703224	7.75	4972	0.076	0.006	0.050	0.082	64.728794	1.773459	1615.66	-1632.74
6	GUIDE	10093656	8.28	4973	-0.039	0.070	0.077	0.119	64.910383	2.992173	-1943.78	1013.66
7	GUIDE	9707240	8.74	4971	0.032	-0.047	0.082	0.131	64.375838	2.149421	-177.75	-2113.16

## 2.4 Star Slots

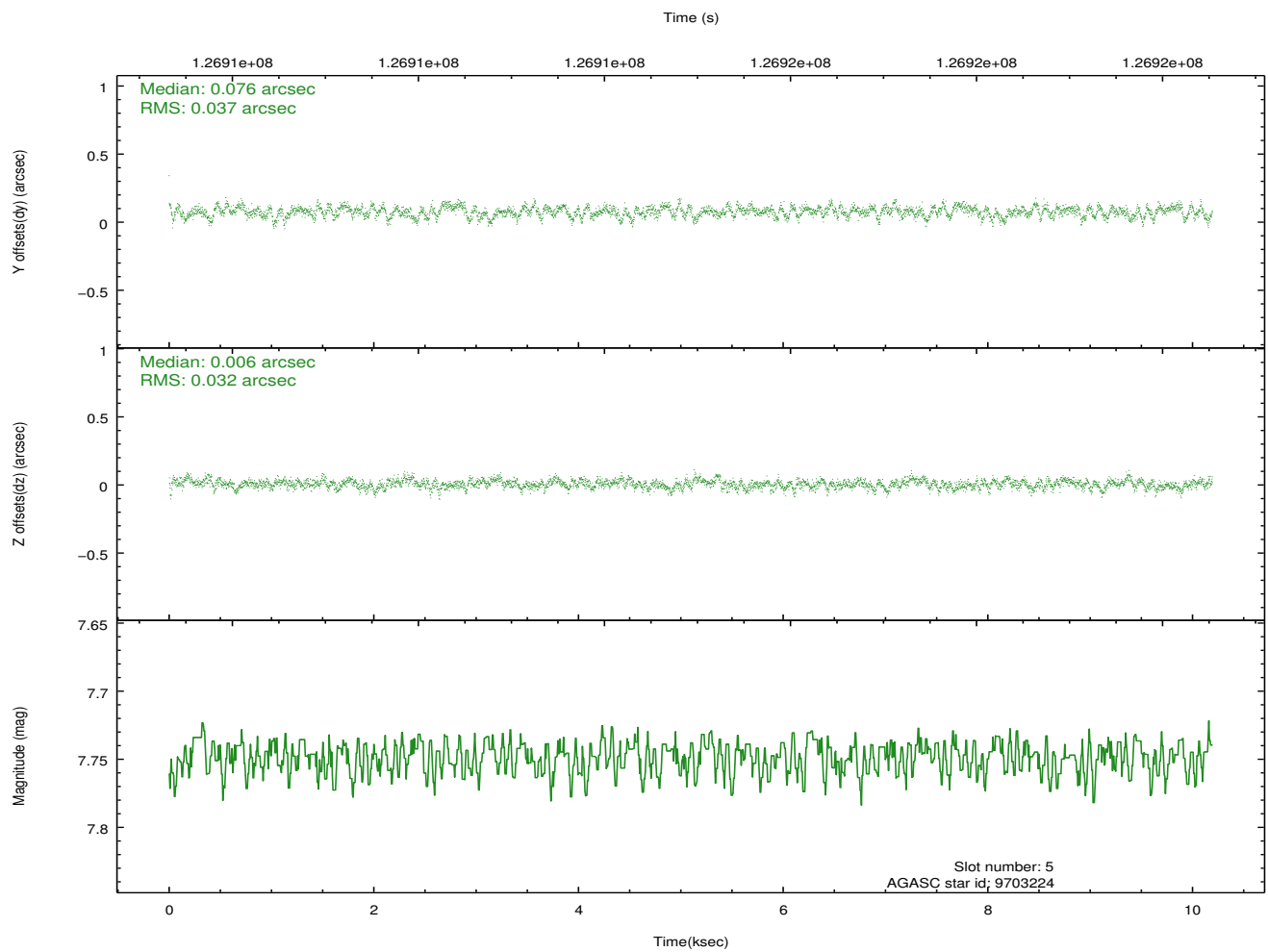
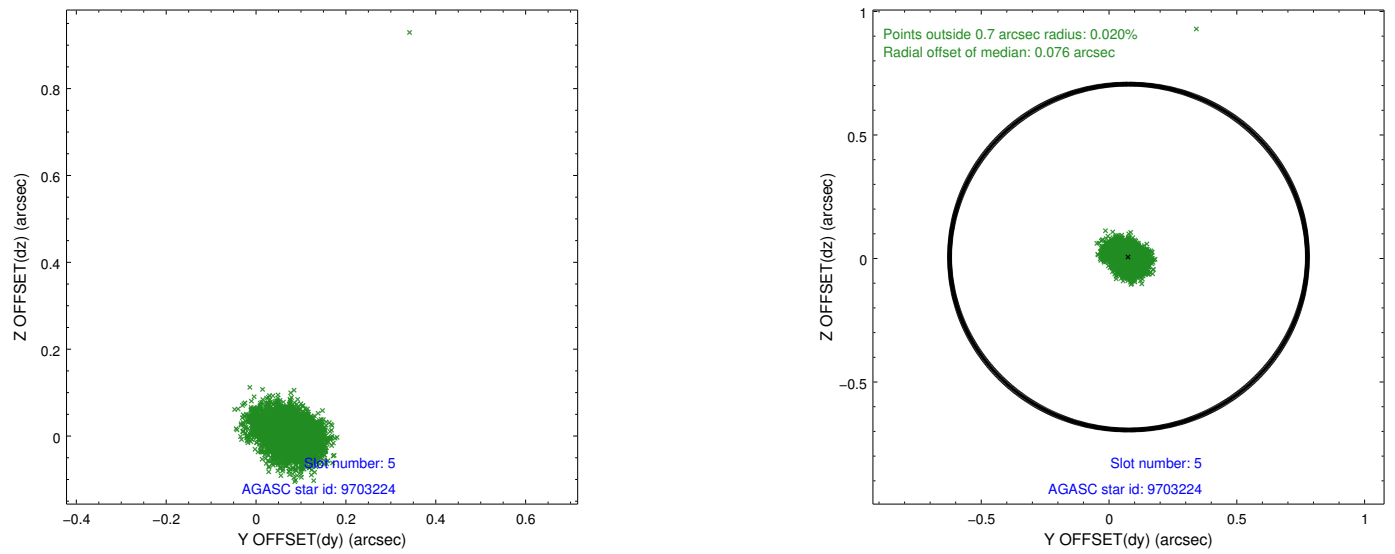
### 2.4.1 Slot 3



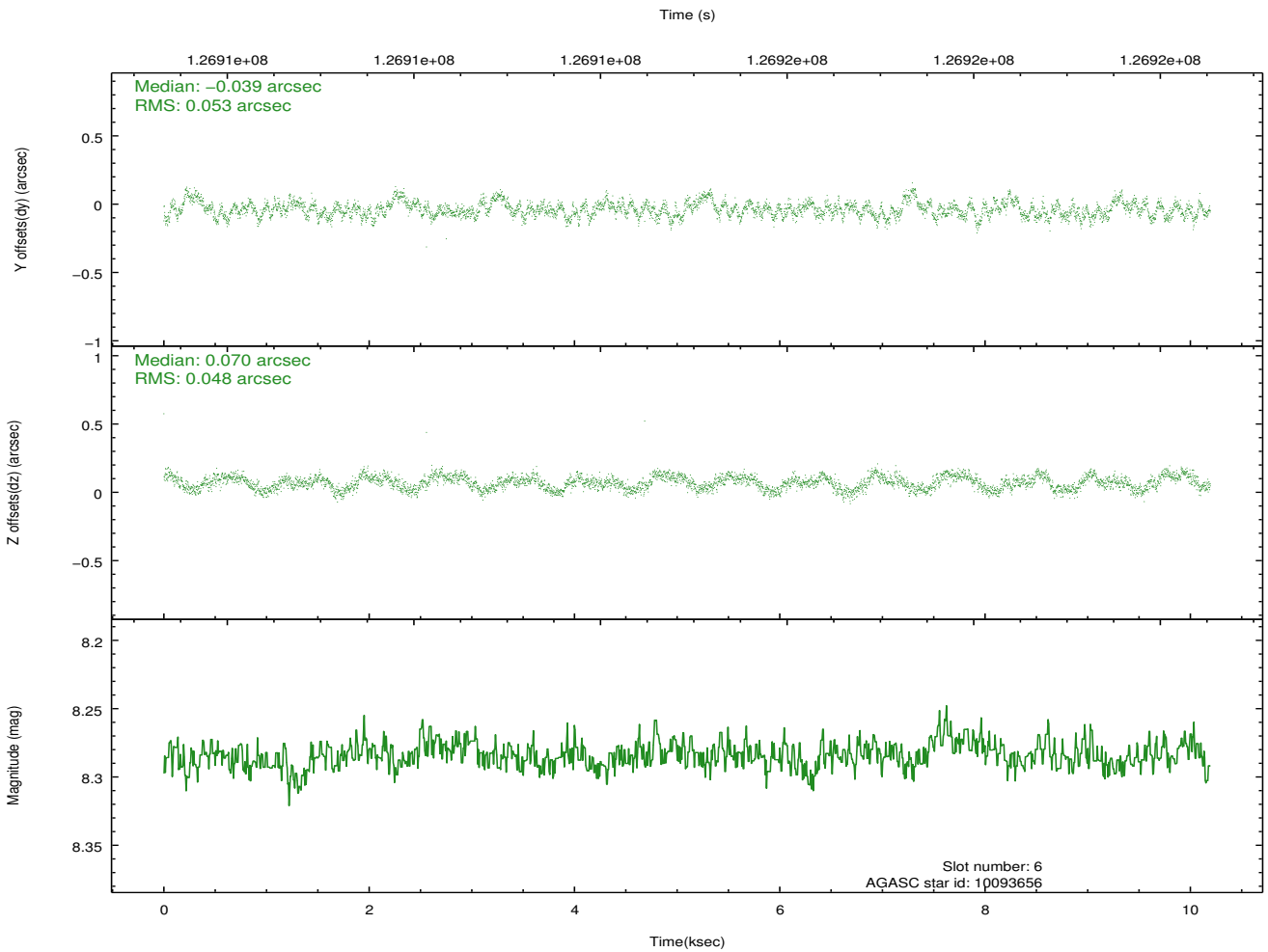
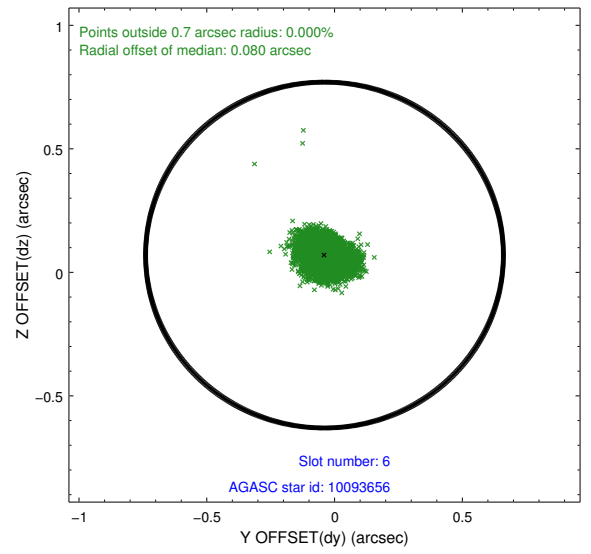
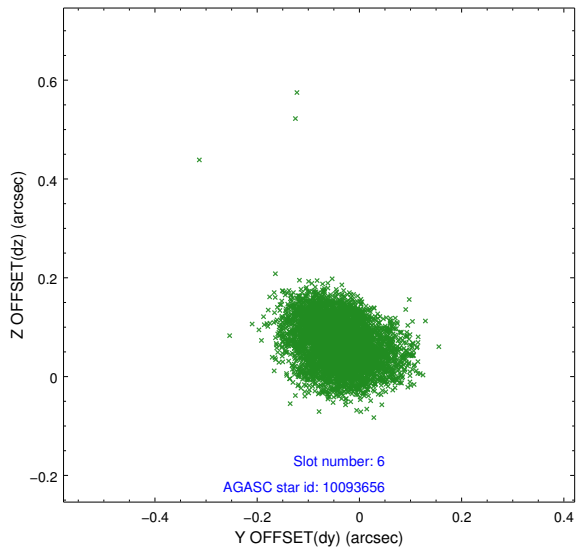
## 2.4.2 Slot 4



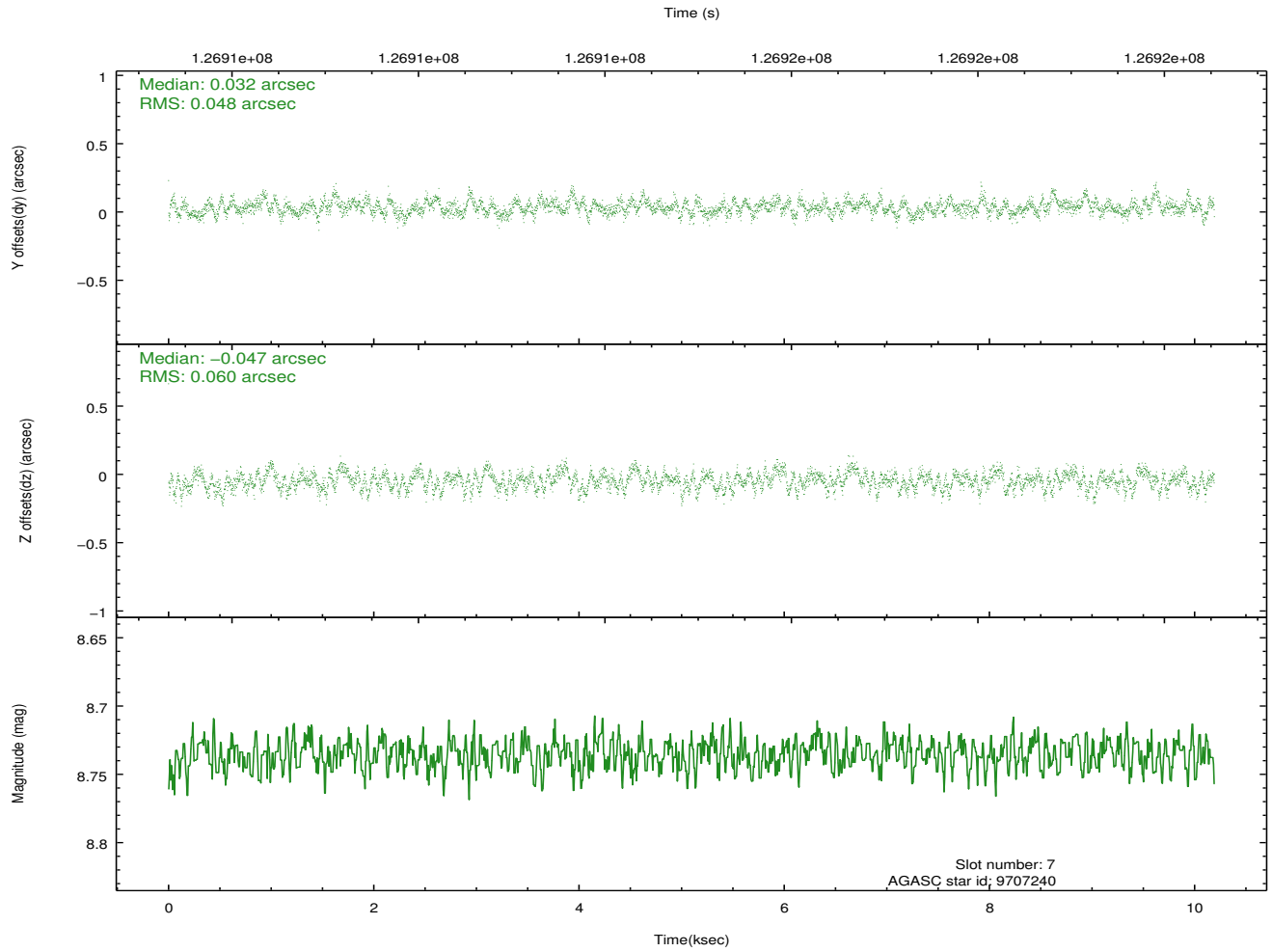
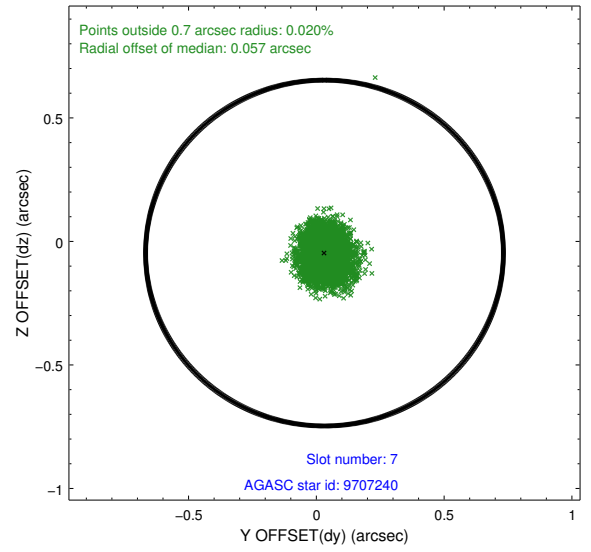
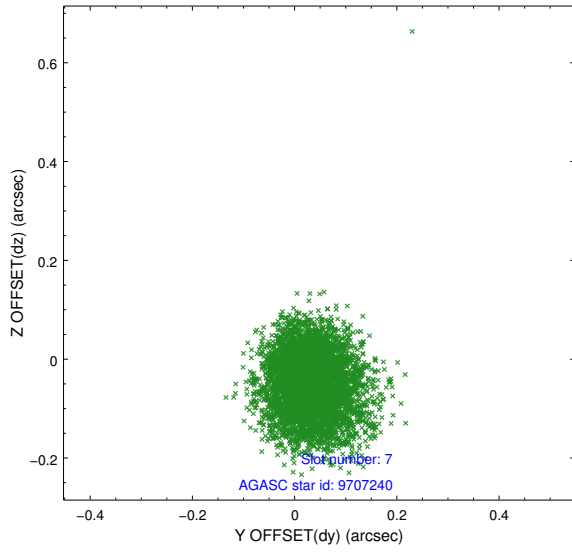
### 2.4.3 Slot 5



## 2.4.4 Slot 6

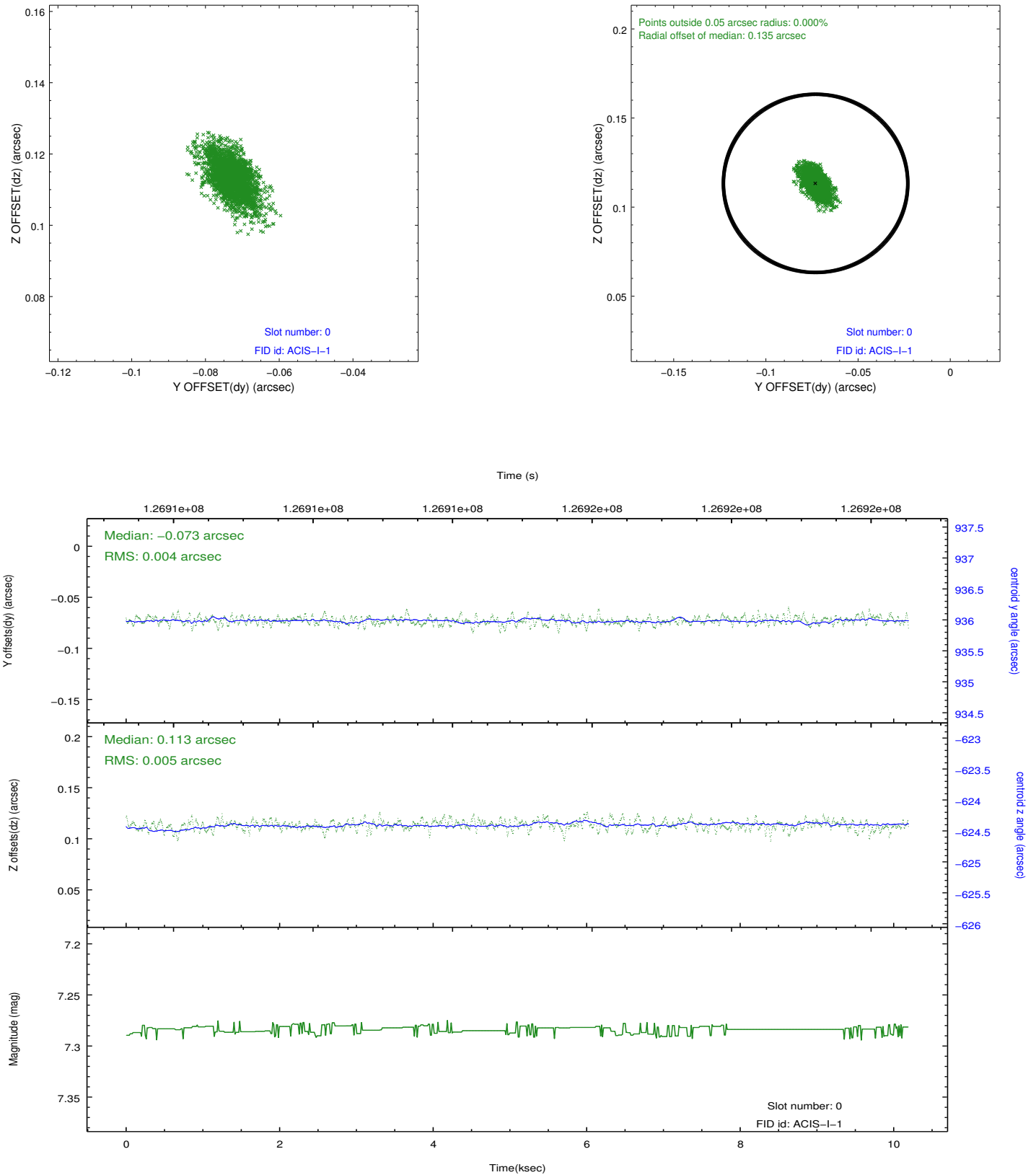


### 2.4.5 Slot 7

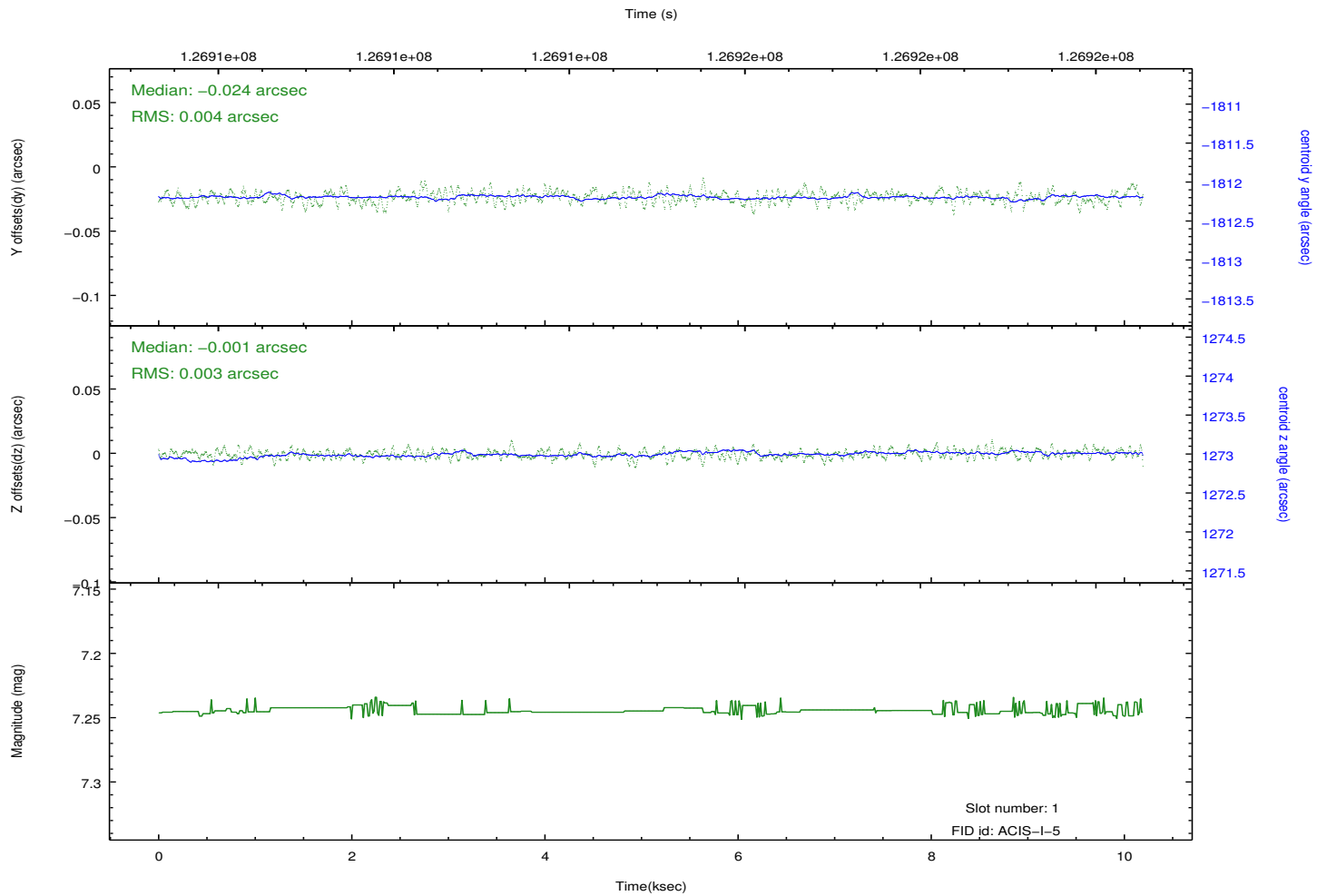
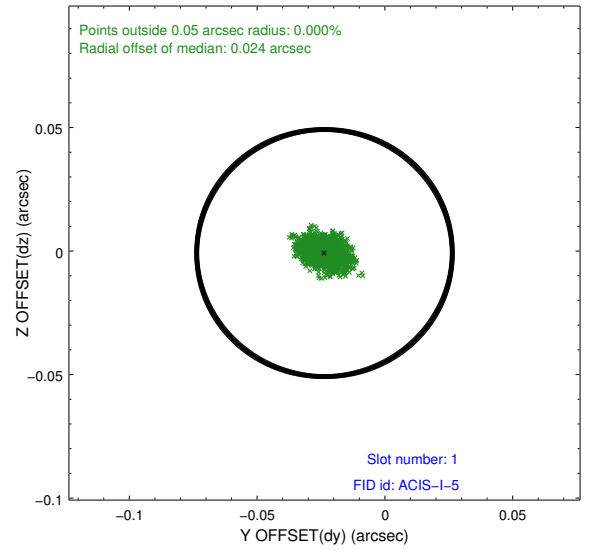
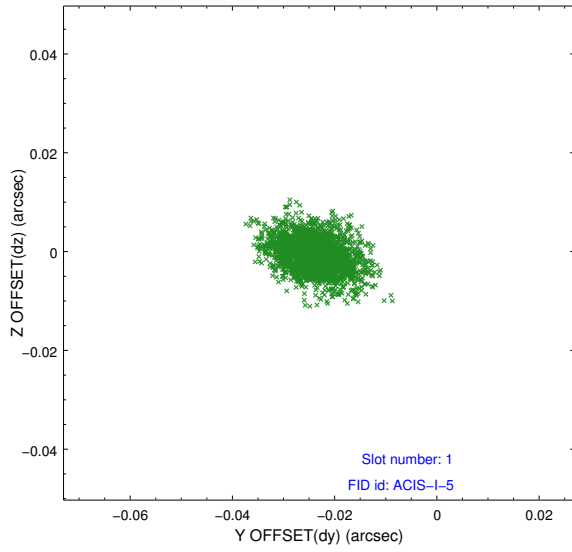


## 2.5 FID Slots

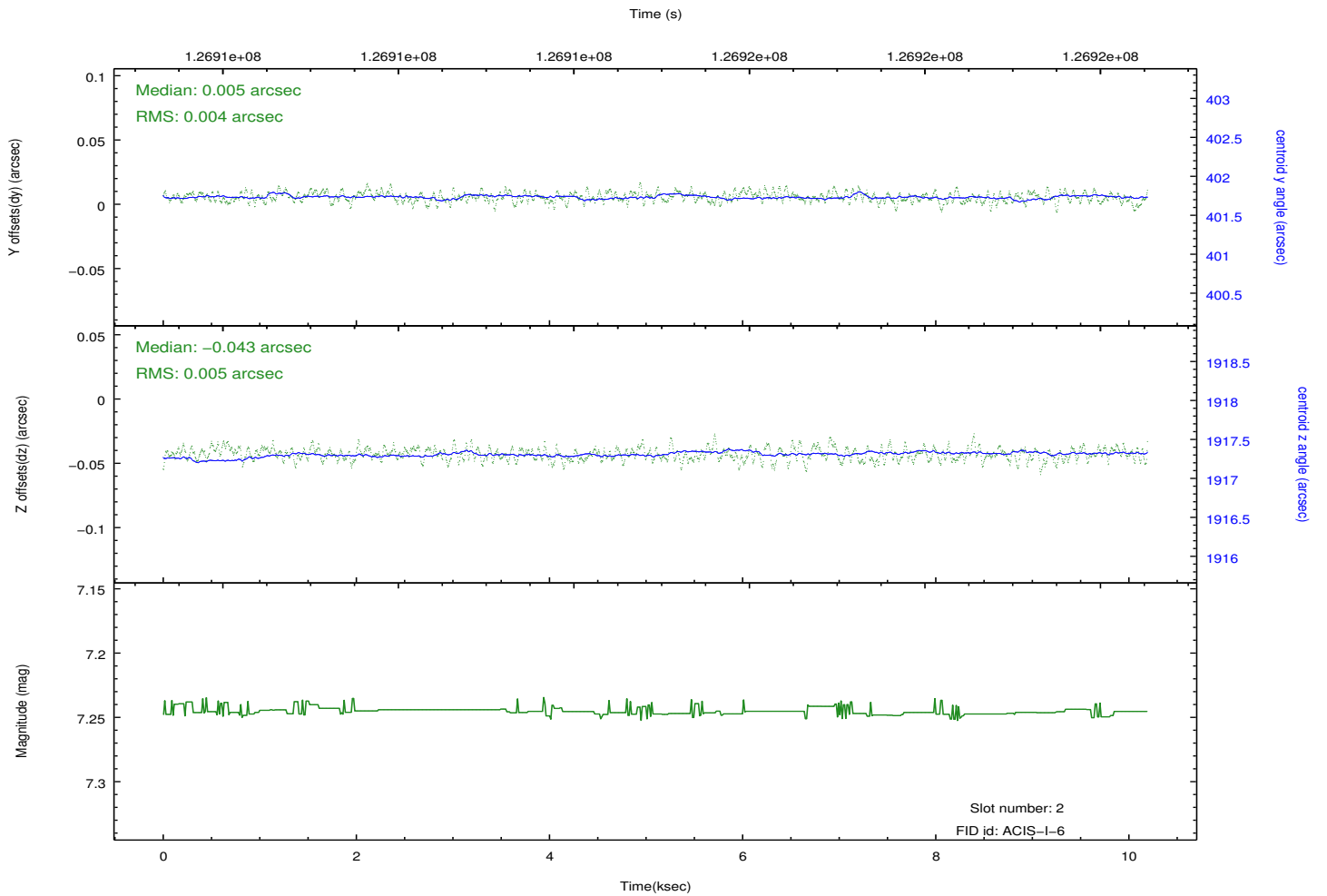
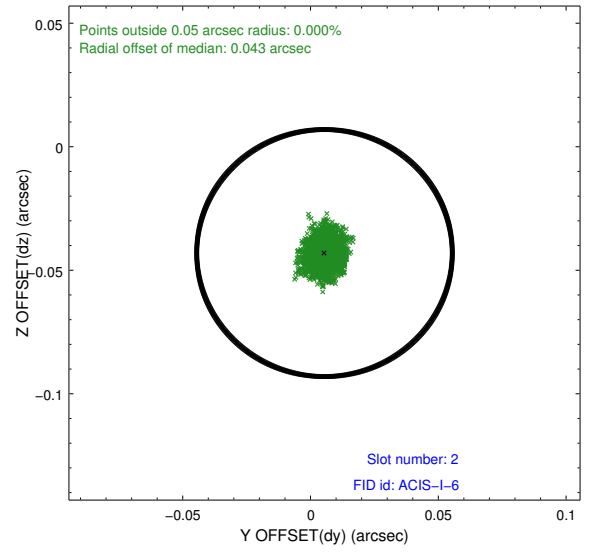
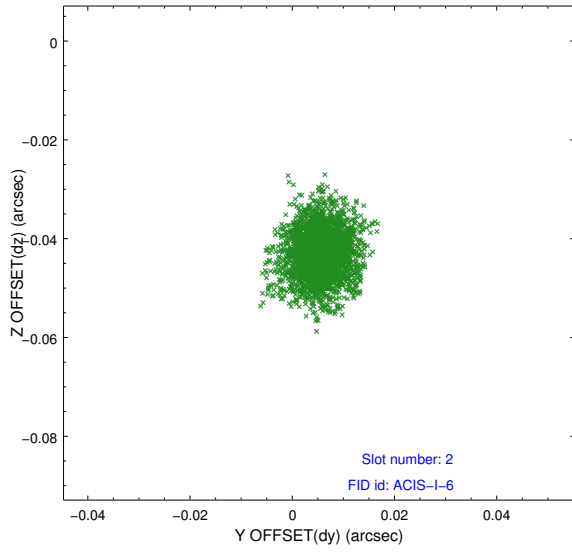
### 2.5.1 Slot 0



## 2.5.2 Slot 1



### 2.5.3 Slot 2



## A Summary

### A.1 Status

V&V Scientist	Jen Lauer
V&V Date (YYYY-MM-DD)	2012.10.02
V&V Edition	1
V&V Disposition and Status	OK
V&V Charge Time	9.774

### A.2 Comments