

V&V Reference Report

L2 ASCDS Version : 8.4.5

Observation 3197 - L2 Version 3
Chandra X-Ray Center

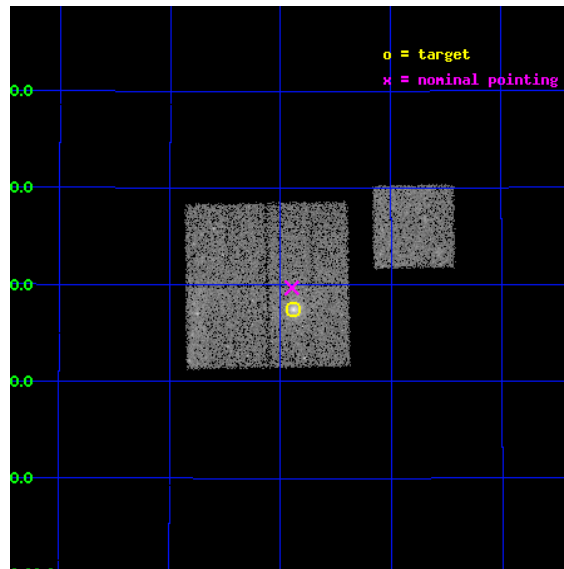
L2 Processing Date : Sep 27 2012

Contents

1	Front	2
2	OBI	3
2.1	OBI	3
2.1.1	Images	3
2.1.2	Bias	3
2.1.3	Parameters	4
2.1.4	Events	4
2.2	Compared Parameters	5
2.3	Aspect	6
2.4	Star Slots	9
2.4.1	Slot 3	9
2.4.2	Slot 4	10
2.4.3	Slot 5	11
2.4.4	Slot 6	12
2.4.5	Slot 7	13
2.5	FID Slots	14
2.5.1	Slot 0	14
2.5.2	Slot 1	15
2.5.3	Slot 2	16
A	Summary	17
A.1	Status	17
A.2	Comments	17

1 Front

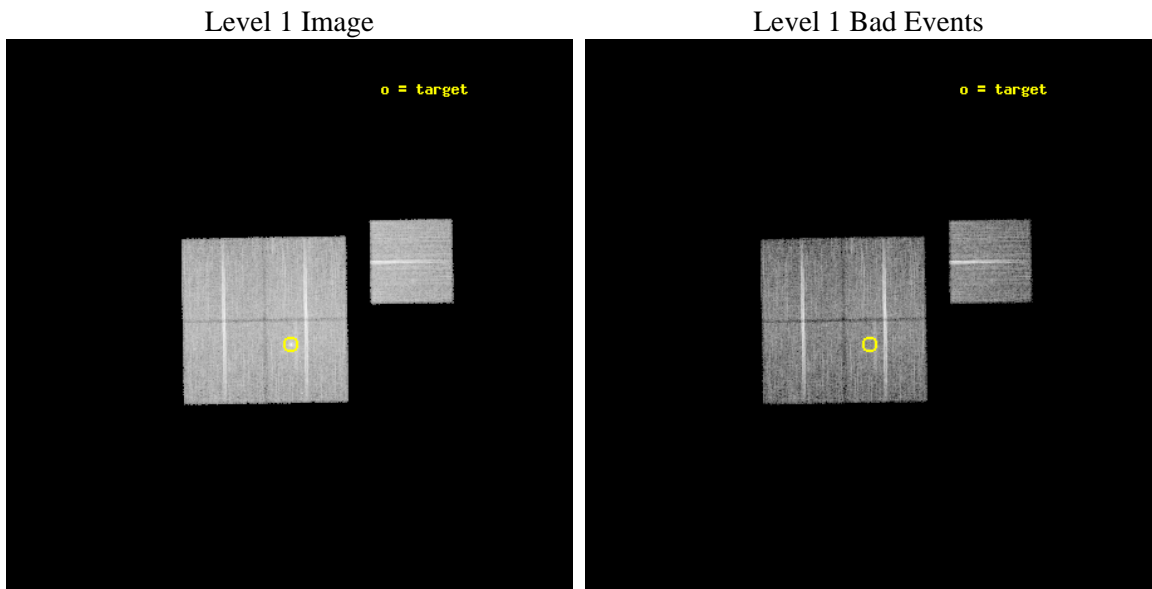
seq_num	800197	Sequence number
obs_id	3197	Observation id
title	OBSERVATION OF MACS CLUSTERS, Z>0.5	Proposal title
observer	DR. LEON VANSPEYBROECK	Principal investigator
object	MACS-J0744.8+3927	Source name
dtycycle	0	
cycle	P	events from which exps? Prim/Second/Both
ra_targ	116.220833	Observer's specified target RA [deg]
dec_targ	39.457222	Observer's specified target Dec [deg]
ra_nom	116.22416796298	Nominal RA [deg]
dec_nom	39.494844398079	Nominal Dec [deg]
roll_nom	89.085479253119	Nominal Roll [deg]
revision	3	Processing version of data
ontime	20506.499960572	Sum of GTIs [s]
livetime	20238.567441921	Livetime [s]
ontime0	20500.218040079	Sum of GTIs [s]
ontime1	20503.358980402	Sum of GTIs [s]
ontime2	20500.218010157	Sum of GTIs [s]
ontime3	20506.499960572	Sum of GTIs [s]
ontime6	20506.499960572	Sum of GTIs [s]
l2events	50340	Number of level 2 events



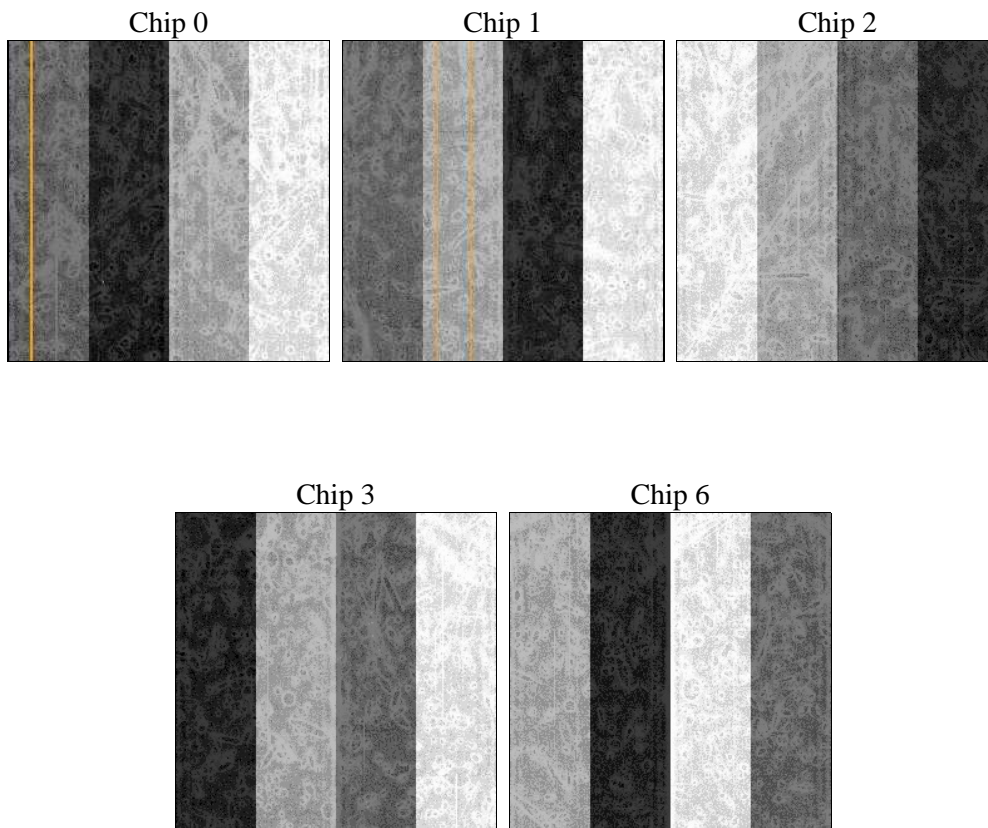
2 OBI

2.1 OBI

2.1.1 Images



2.1.2 Bias



2.1.3 Parameters

obi_num	0	Obi number	sched_exp_time	20600.000000	[s] Scheduled observation exposure time
ascdsver	8.4.5	Processing system revision	ontime	20506.499960572	Sum of GTIs [s]
caldbver	4.5.1.1	 	ontime0	20500.218040079	Sum of GTIs [s]
date	2012-09-27T02:19:42	Date and time of file creation	ontime1	20503.358980402	Sum of GTIs [s]
revision	3	Processing version of data	ontime2	20500.218010157	Sum of GTIs [s]
			ontime3	20506.499960572	Sum of GTIs [s]
			ontime6	20506.499960572	Sum of GTIs [s]
			l1events	551458	Number of level 1 events

2.1.4 Events

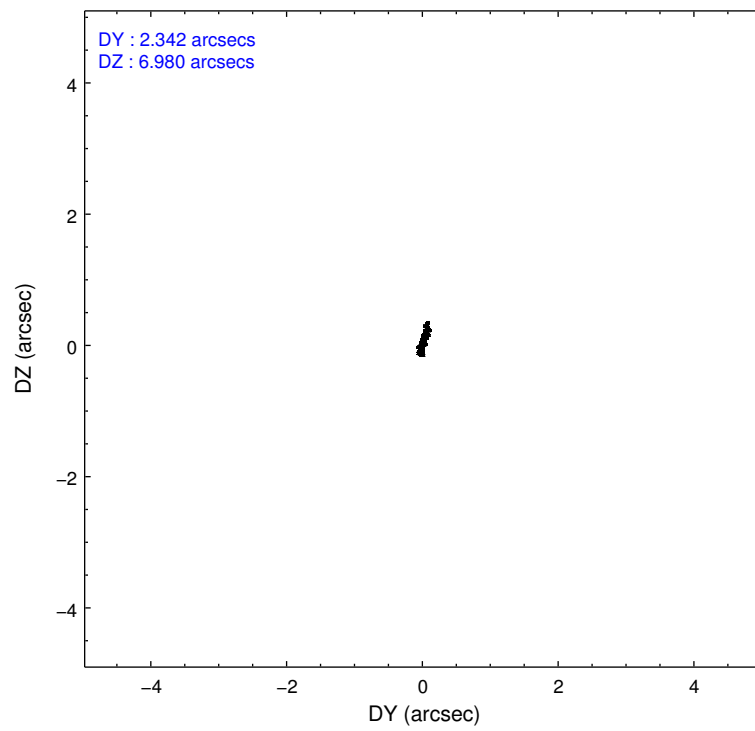
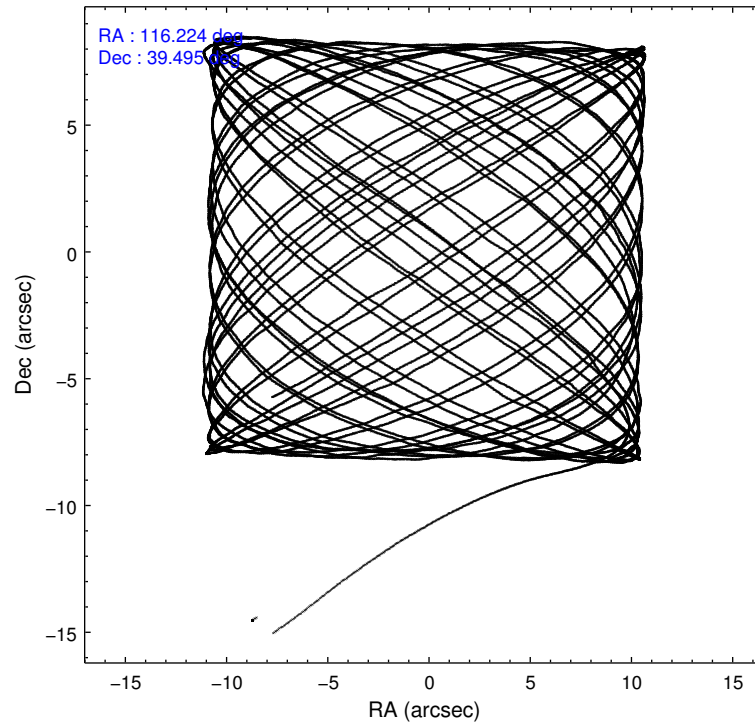
	ccd 0	ccd 1	ccd 2	ccd 3	ccd 6
level 1 events	103137	104562	117150	114632	111977
rejected events	91852	91844	106382	100607	100058
rejected %	89%	87%	90%	87%	89%

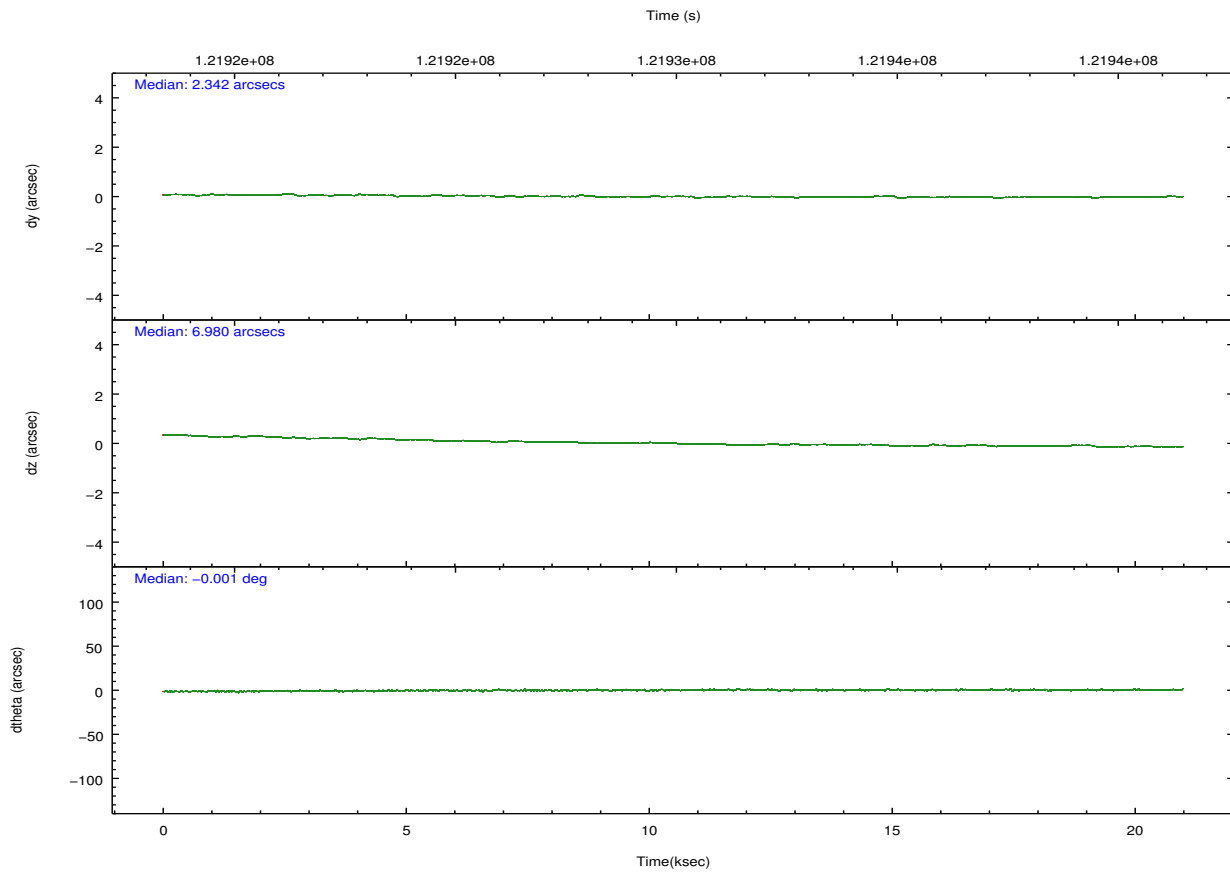
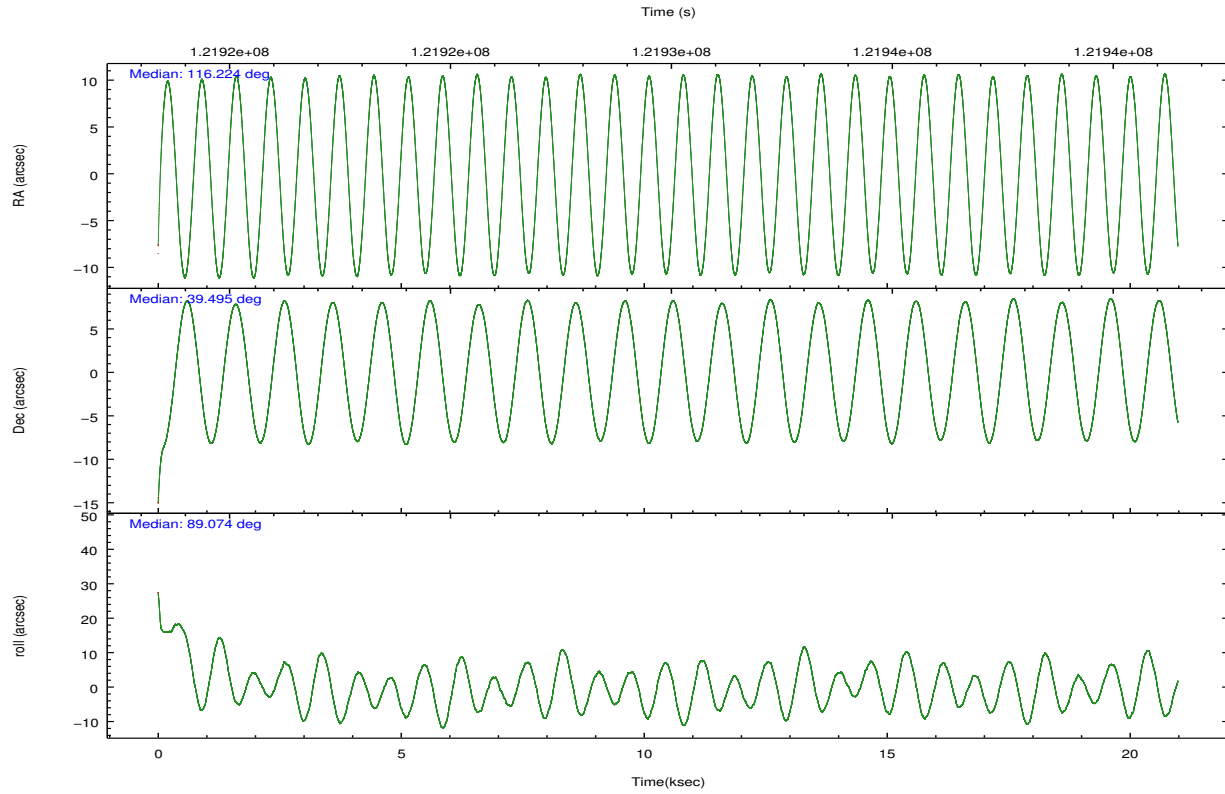
	ccd 0	ccd 1	ccd 2	ccd 3	ccd 6
grade 0 events	4155	4870	3863	6885	4517
	4%	4%	3%	6%	4%
grade 1 events	49	58	48	66	49
	0%	0%	0%	0%	0%
grade 2 events	2542	2599	2446	2518	2430
	2%	2%	2%	2%	2%
grade 3 events	1246	1427	1117	1250	1321
	1%	1%	0%	1%	1%
grade 4 events	1208	1362	1259	1236	1295
	1%	1%	1%	1%	1%
grade 5 events	3578	3826	3347	3899	4064
	3%	3%	2%	3%	3%
grade 6 events	2136	2462	2084	2137	2356
	2%	2%	1%	1%	2%
grade 7 events	88223	87958	102986	96641	95945
	85%	84%	87%	84%	85%

2.2 Compared Parameters

Parameter	Planned	Actual	Parameter	Planned	Actual
Instrument	ACIS	ACIS	Obspar format version number	7	7
Detector	ACIS-01236	ACIS-01236	Obspar file type	PREDICTED	ACTUAL
Grating	NONE	NONE	Obspar update status	NONE	UPDATED
Data mode	VFAINT	VFAINT	Number of optional ACIS chips dropped	0	0
Observation mode	POINTING	POINTING	On-chip summing requested	N	N
[deg] Pointing RA	116.241475	116.2241679629753	Subarray requested	NONE	NONE
[deg] Pointing Dec	39.470908	39.49484439807879	Alternating exposures requested	N	N
[deg] Pointing Roll	88.865786	89.08547925311917	[s] Primary exposure time	0.000000	3.1
[mm] SIM focus pos	-0.782348	-0.7809083437167272			
[mm] SIM defocus	0	0.001439871863259334			
[mm] SIM translation stage pos	-227.742463	-227.734108438797			
[mm] SIM translation stage offset	-5.85	-5.858344564132665			
[s] Observation start time (MET)	121919814.184000	121918762.58922			
Observation start date	2001-11-12T02:35:50	2001-11-12T02:19:22			
[s] Observation end time (MET)	121940414.184000	121940918.99011			
Observation end date	2001-11-12T08:19:10	2001-11-12T08:28:38			
Read mode	TIMED	TIMED			

2.3 Aspect



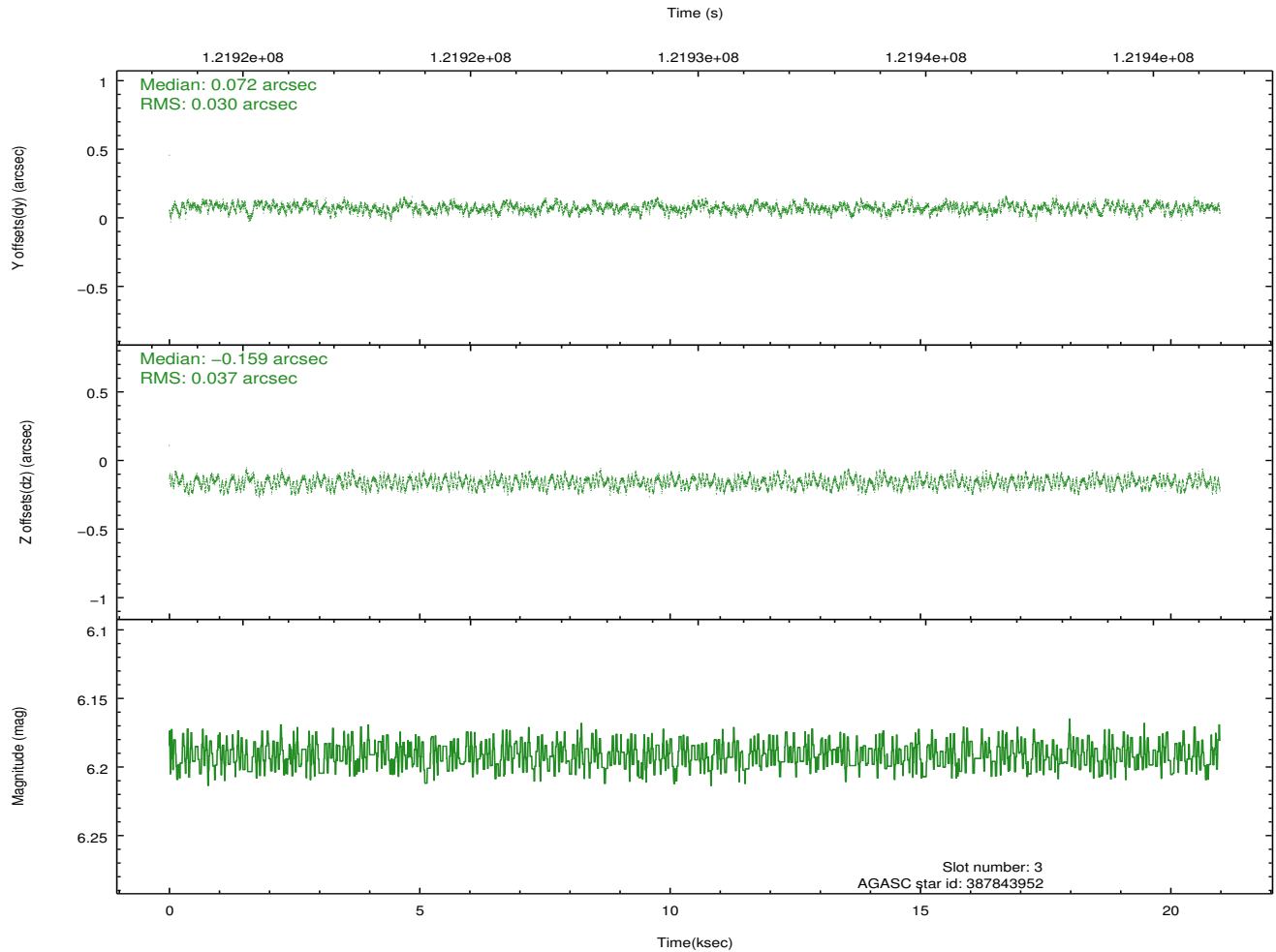
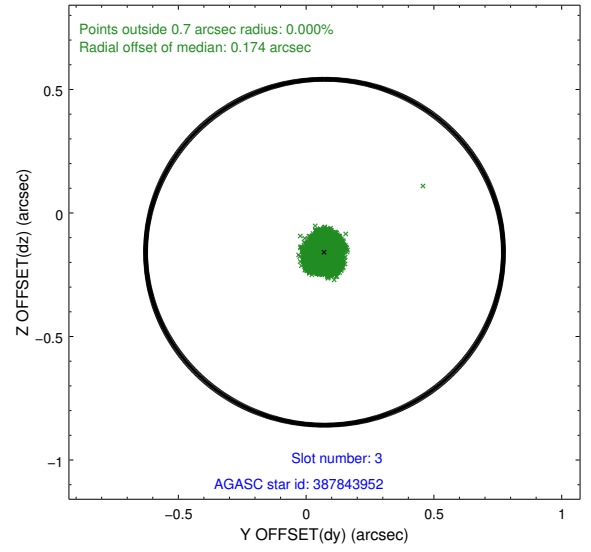
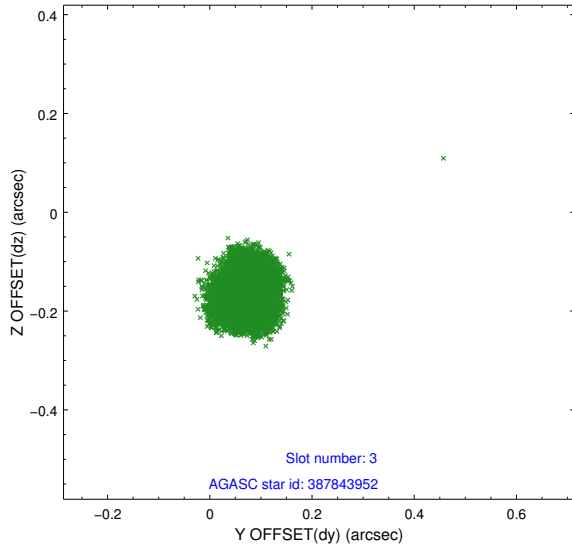


Slot Statistics

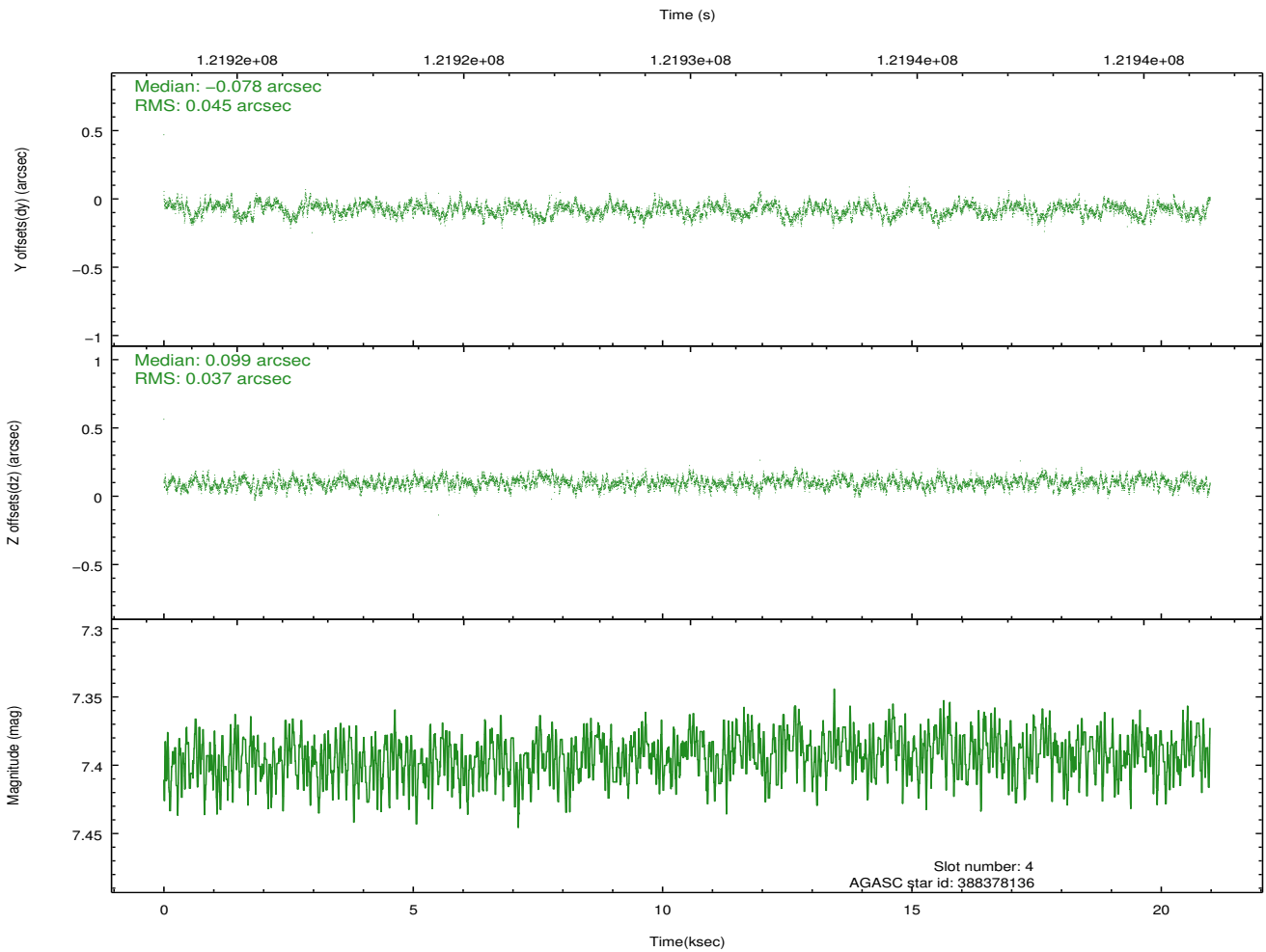
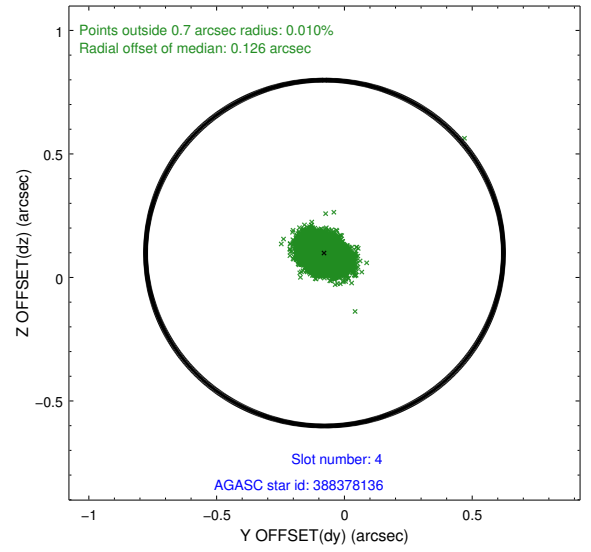
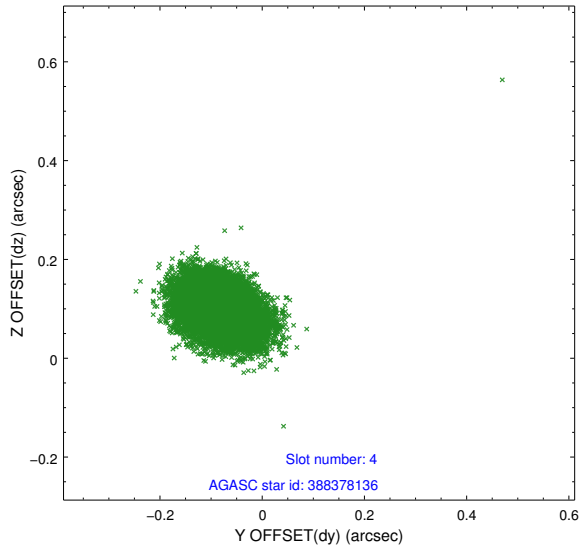
slot	status	id	mag	n_pts	med_dy	med_dz	dr1	dr2	ra	dec	mean_y	mean_z
0	FID	ACIS-I-1	7.24	5117	0.046	0.005	0.008	0.015	0.000000	0.000000	937.38	-950.65
1	FID	ACIS-I-5	7.23	5117	-0.109	0.085	0.008	0.013	0.000000	0.000000	-1810.76	946.84
2	FID	ACIS-I-6	7.25	5118	-0.028	-0.018	0.009	0.014	0.000000	0.000000	402.70	1591.41
3	GUIDE	387843952	6.19	10235	0.072	-0.159	0.052	0.078	116.039537	38.837802	-2289.42	521.17
4	GUIDE	388378136	7.39	10235	-0.078	0.099	0.061	0.099	116.426409	39.546945	284.06	-506.88
5	GUIDE	388371256	9.03	10232	-0.152	0.214	0.077	0.126	116.958551	39.618125	577.23	-1976.49
6	GUIDE	388381184	9.28	10230	0.027	-0.096	0.086	0.143	115.796137	39.415707	-220.46	1234.84
7	GUIDE	387846104	9.39	10230	0.134	-0.054	0.094	0.163	115.792368	39.298643	-641.90	1239.34

2.4 Star Slots

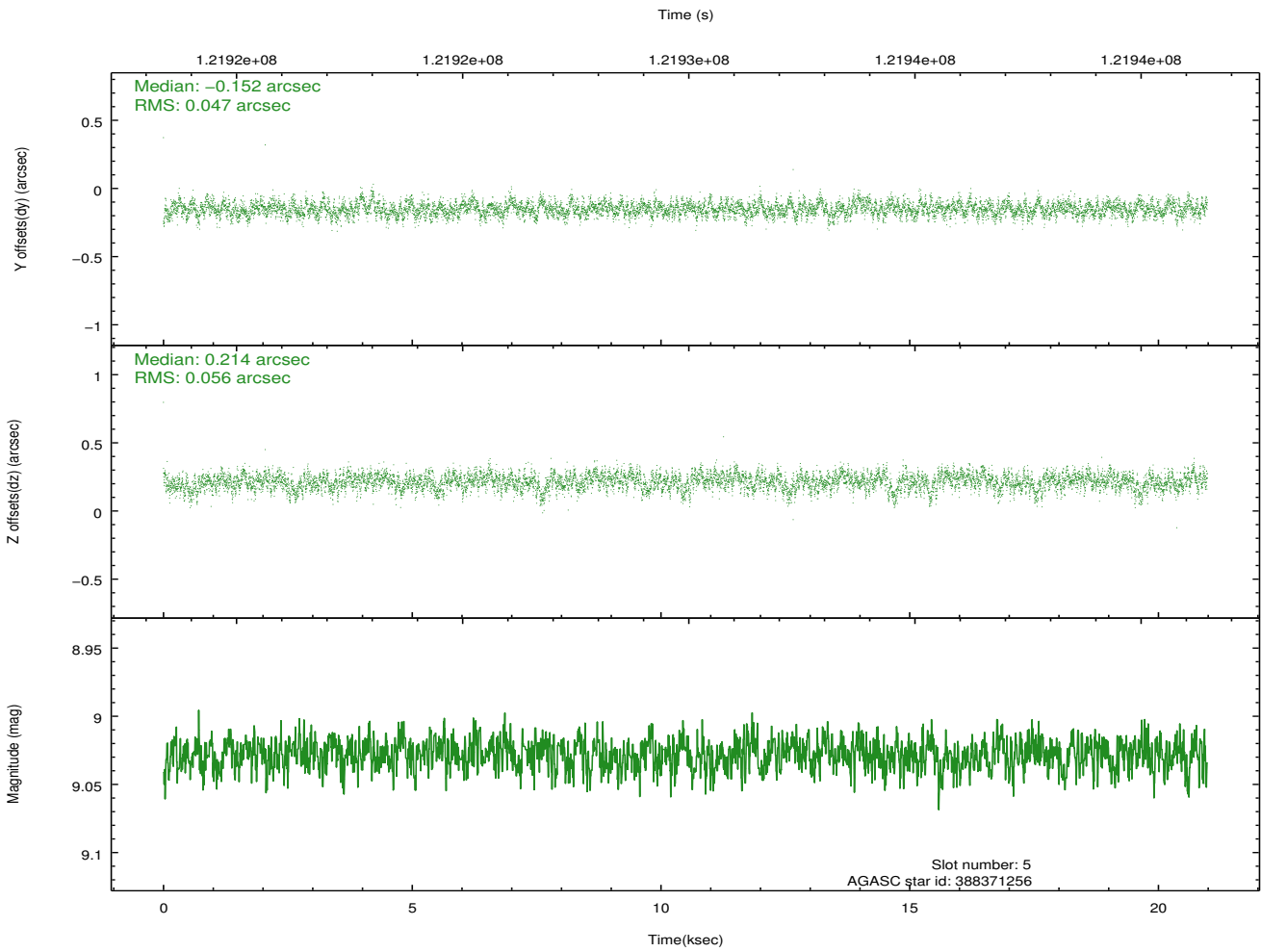
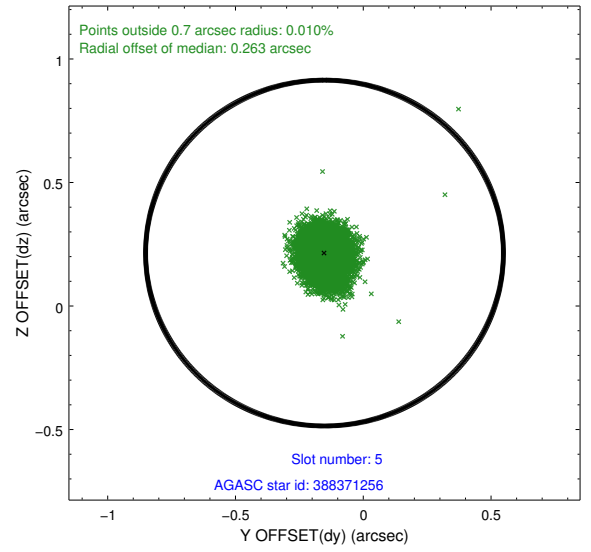
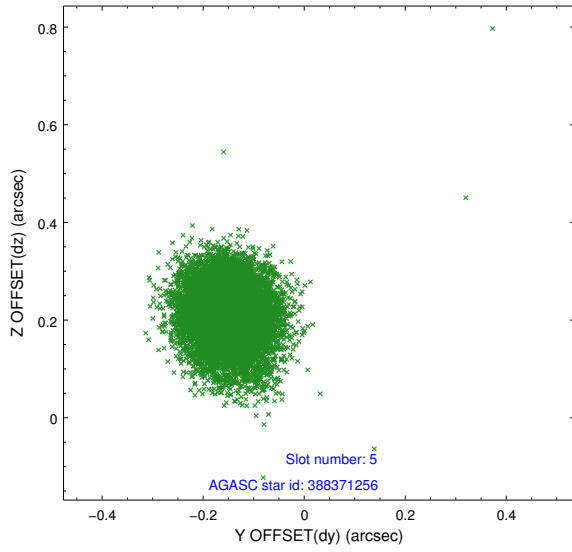
2.4.1 Slot 3



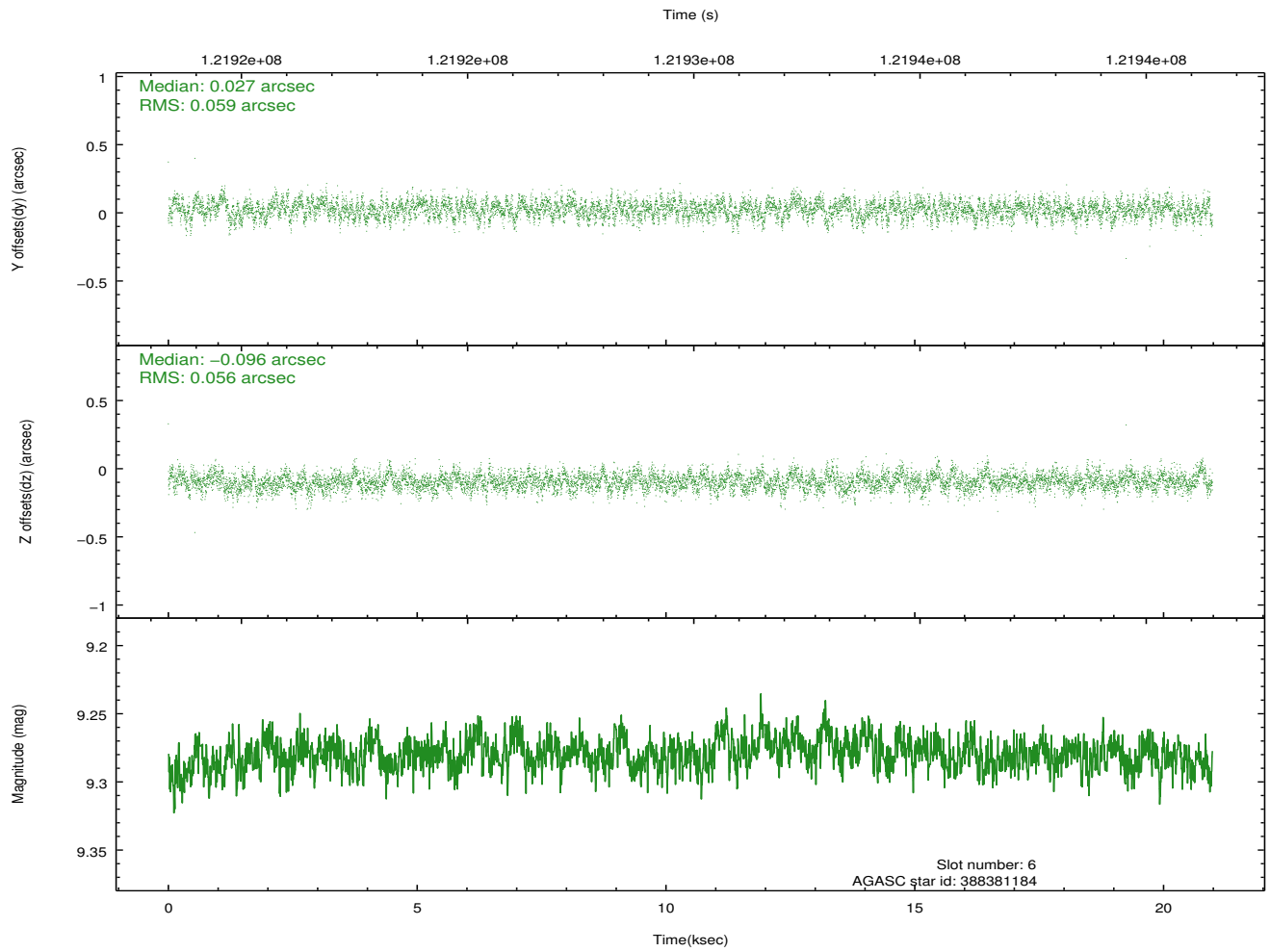
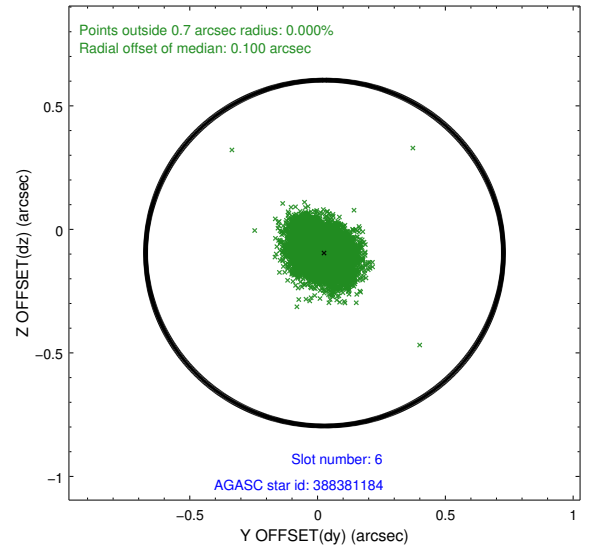
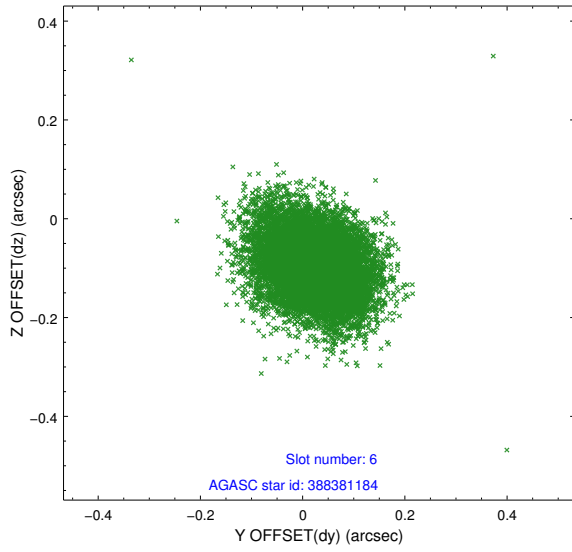
2.4.2 Slot 4



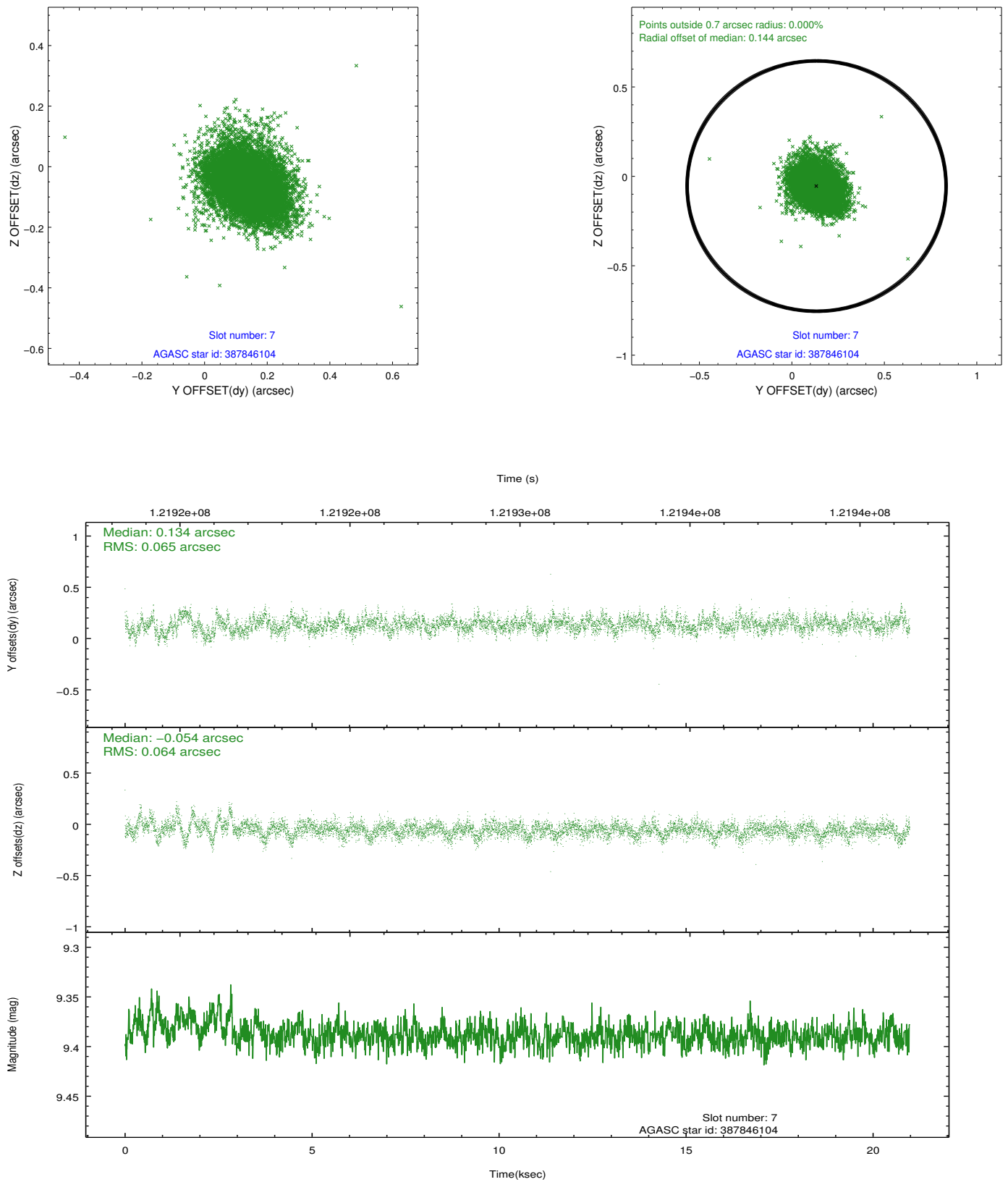
2.4.3 Slot 5



2.4.4 Slot 6

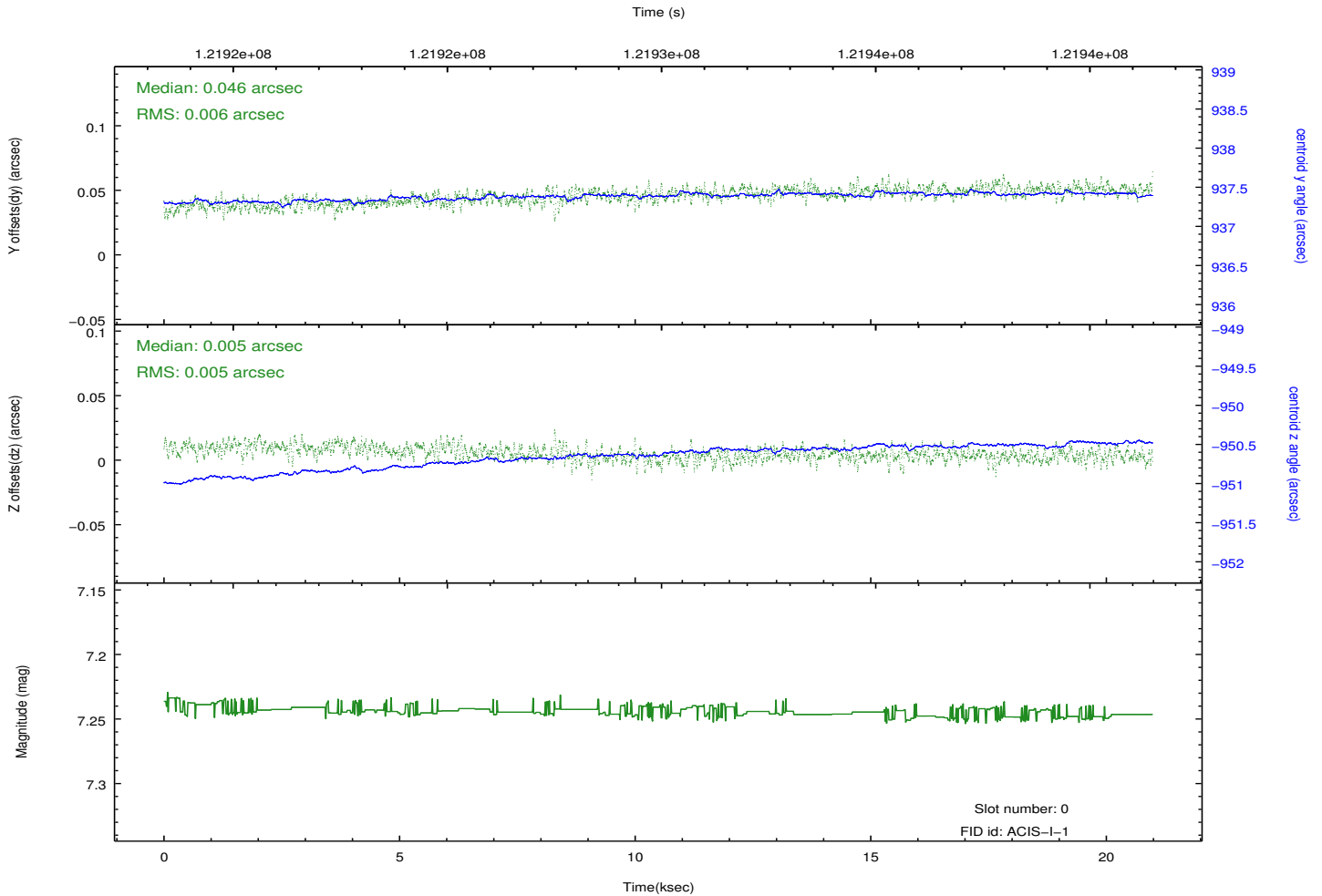
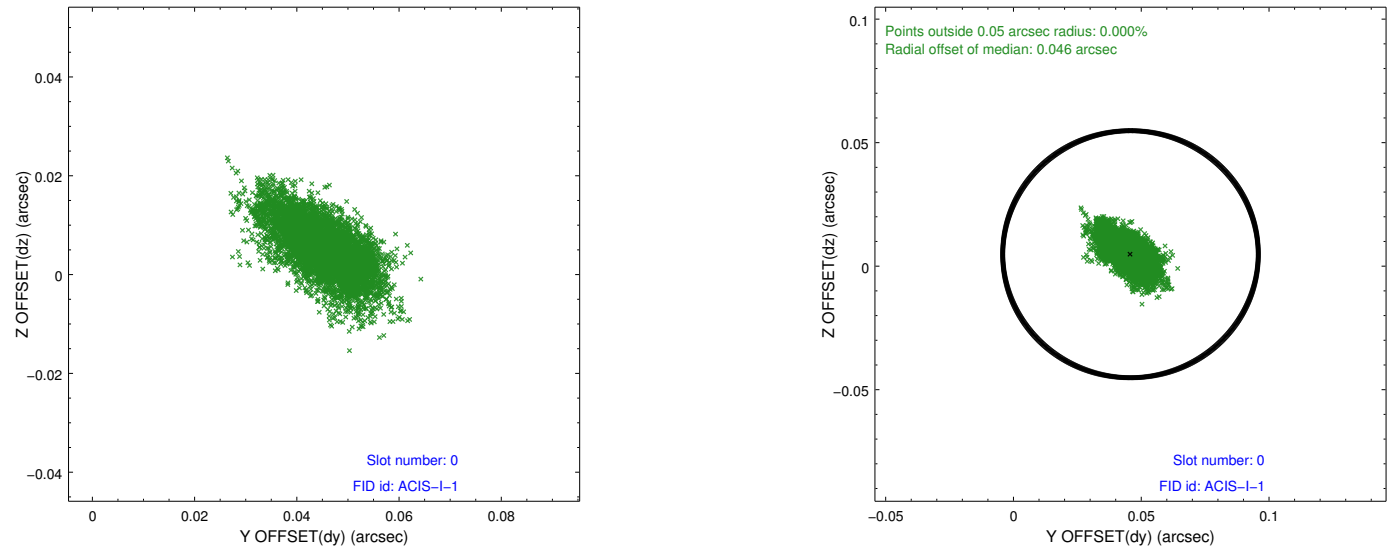


2.4.5 Slot 7

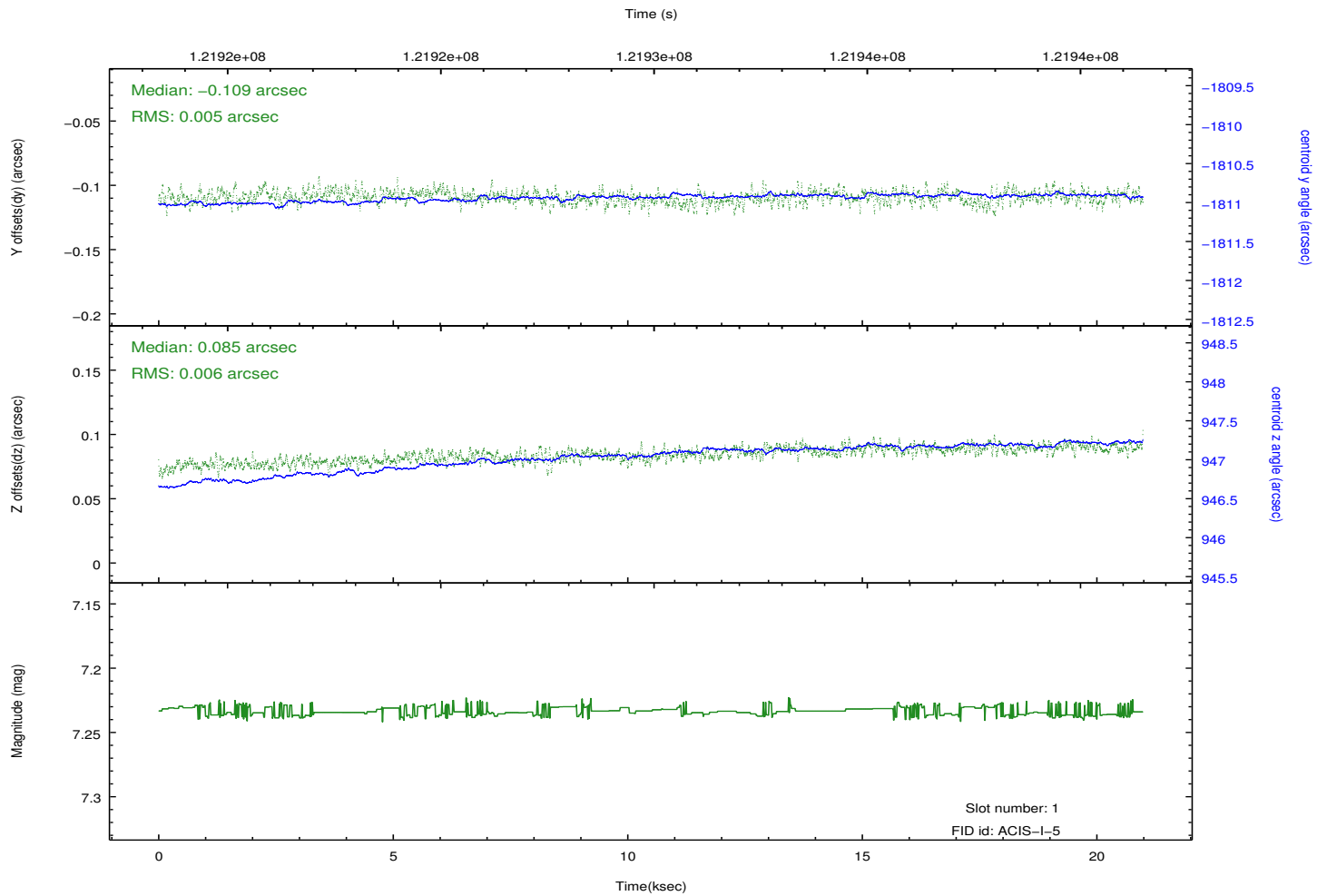
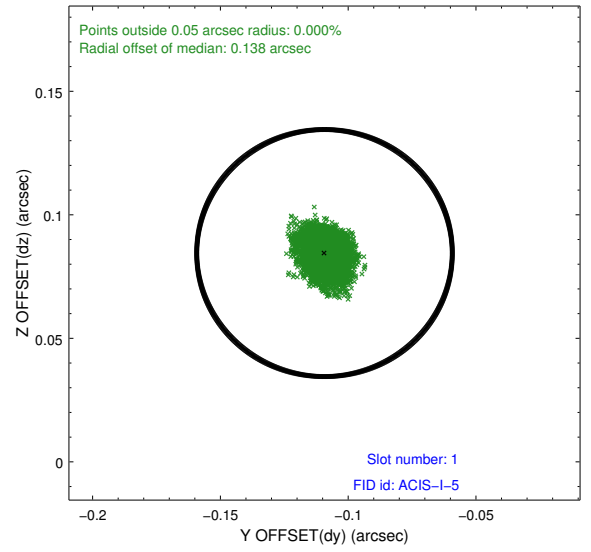
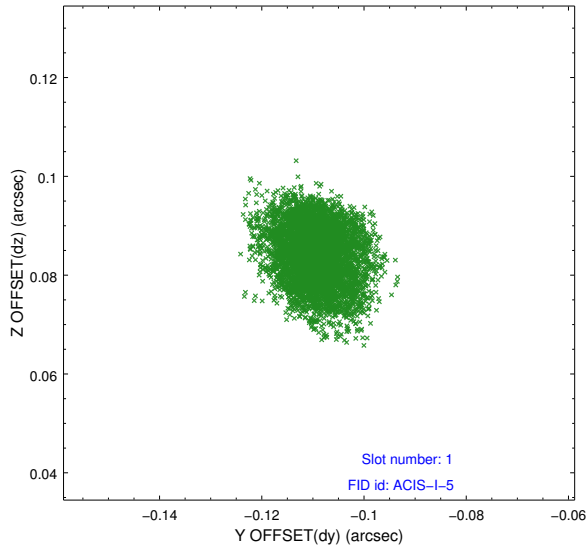


2.5 FID Slots

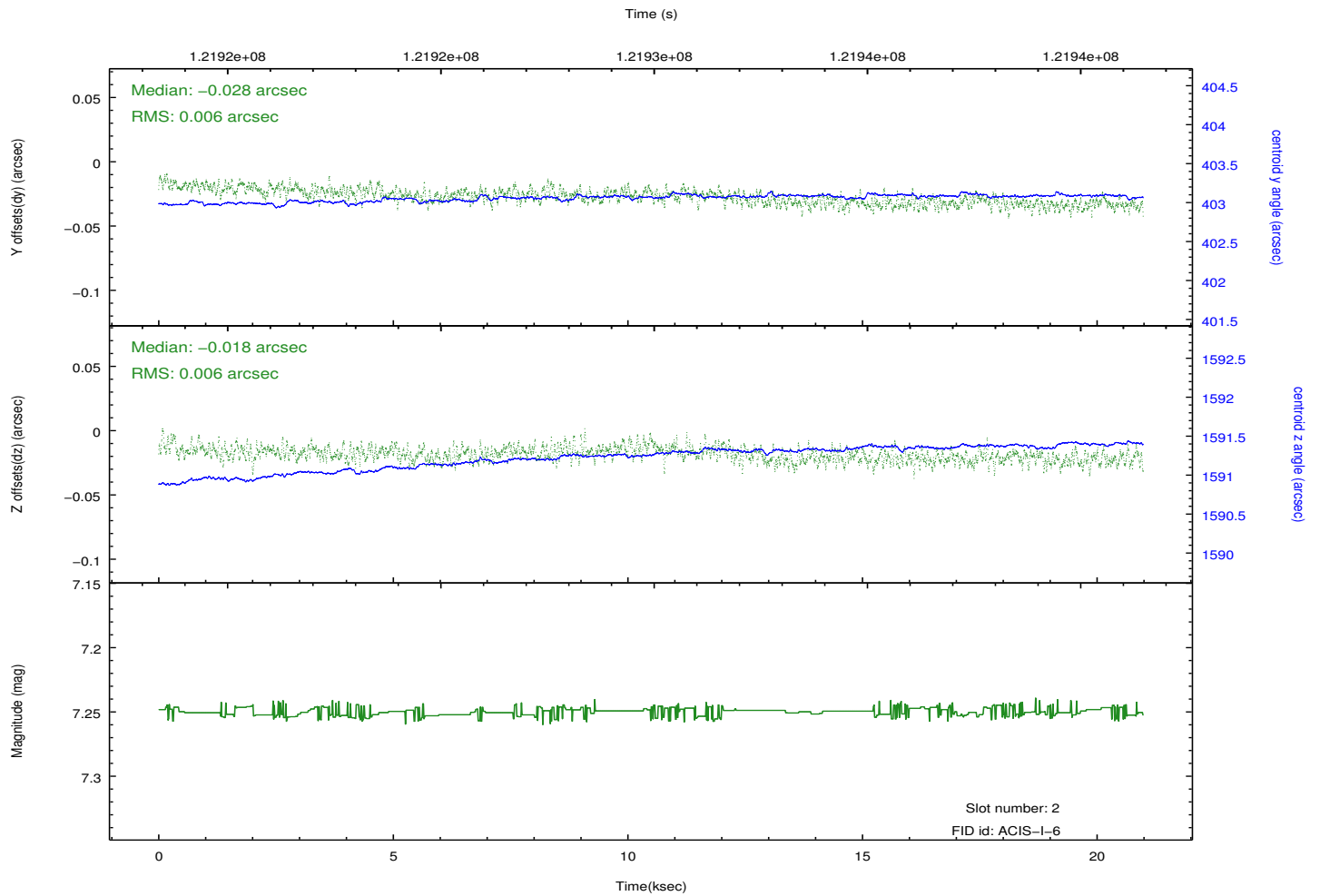
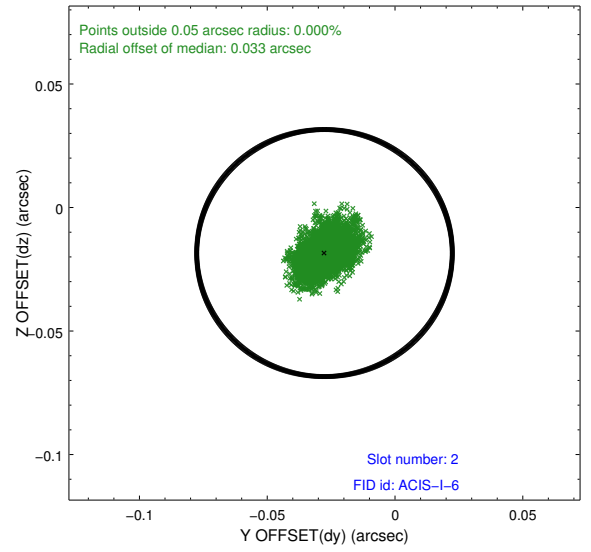
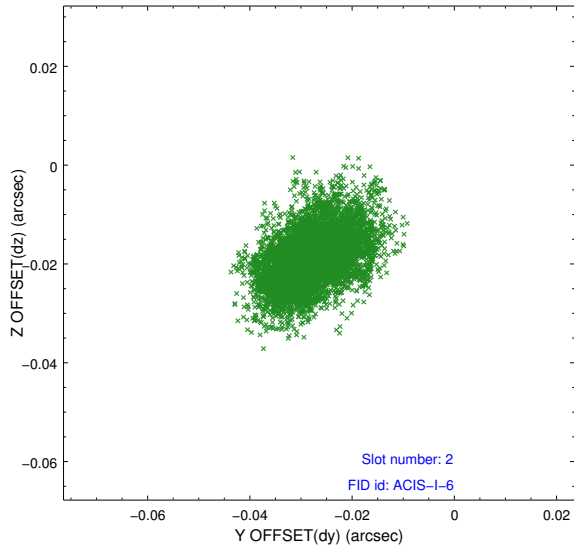
2.5.1 Slot 0



2.5.2 Slot 1



2.5.3 Slot 2



A Summary

A.1 Status

V&V Scientist	Beth Sundheim
V&V Date (YYYY-MM-DD)	2012.09.28
V&V Edition	1
V&V Disposition and Status	OK
V&V Charge Time	20.509

A.2 Comments