

V&V Reference Report

L2 ASCDS Version : 8.4.5

Observation 3217 - L2 Version 4
Chandra X-Ray Center

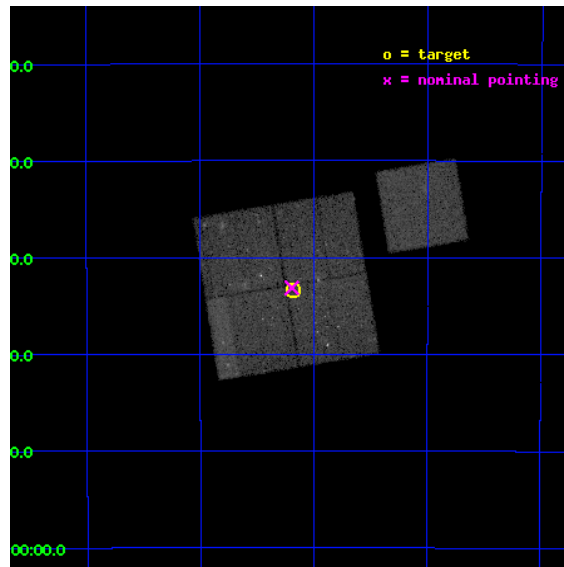
L2 Processing Date : Oct 18 2012

Contents

1	Front	2
2	OBI	3
2.1	OBI	3
2.1.1	Images	3
2.1.2	Bias	3
2.1.3	Parameters	4
2.1.4	Events	4
2.2	Compared Parameters	5
2.3	Aspect	6
2.4	Star Slots	9
2.4.1	Slot 3	9
2.4.2	Slot 4	10
2.4.3	Slot 5	11
2.4.4	Slot 6	12
2.4.5	Slot 7	13
2.5	FID Slots	14
2.5.1	Slot 0	14
2.5.2	Slot 1	15
2.5.3	Slot 2	16
A	Summary	17
A.1	Status	17
A.2	Comments	17

1 Front

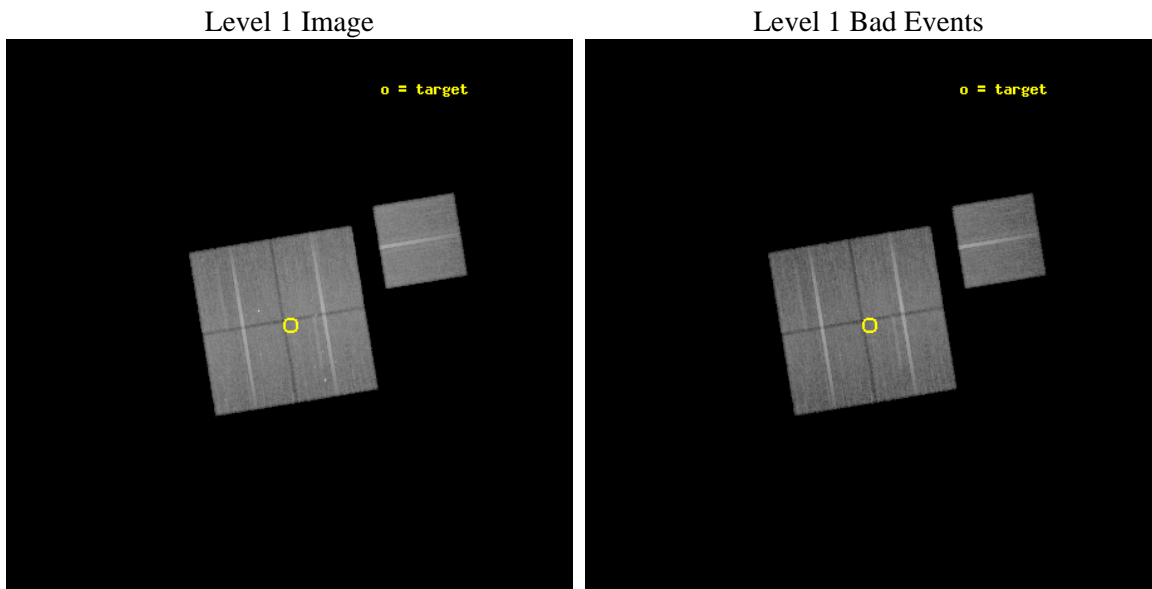
seq_num	800217	Sequence number
obs_id	3217	Observation id
title	THE ASSEMBLY OF GALAXY GROUPS	Proposal title
observer	Prof Trevor Ponman	Principal investigator
object	NGC 3557	Source name
dtcycle	0	
cycle	P	events from which exps? Prim/Second/Both
ra_targ	167.545	Observer's specified target RA [deg]
dec_targ	-37.556389	Observer's specified target Dec [deg]
ra_nom	167.54815861019	Nominal RA [deg]
dec_nom	-37.552463052285	Nominal Dec [deg]
roll_nom	80.610737323954	Nominal Roll [deg]
revision	4	Processing version of data
ontime	37990.499926925	Sum of GTIs [s]
livetime	37494.12607718	Livetime [s]
ontime0	37987.358936787	Sum of GTIs [s]
ontime1	37984.217966557	Sum of GTIs [s]
ontime2	37981.077026308	Sum of GTIs [s]
ontime3	37990.499926925	Sum of GTIs [s]
ontime6	37984.217986494	Sum of GTIs [s]
l2events	112076	Number of level 2 events



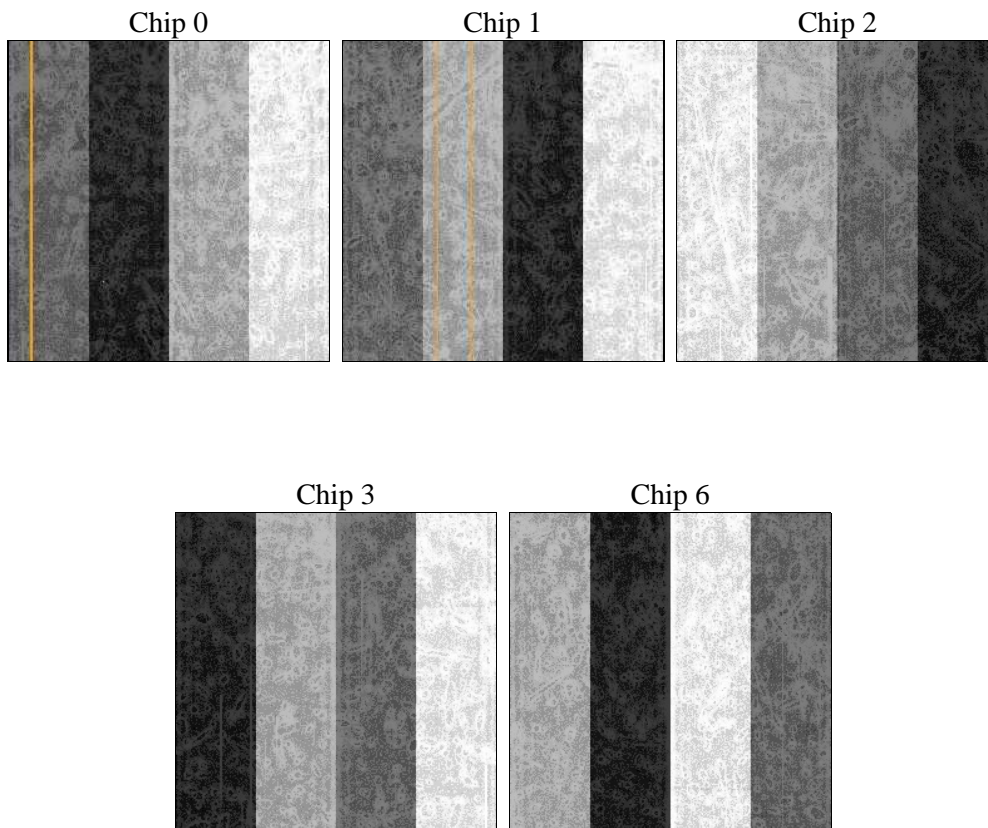
2 OBI

2.1 OBI

2.1.1 Images



2.1.2 Bias



2.1.3 Parameters

obi_num	1	Obi number	sched_exp_time	37904.537000	[s] Scheduled observation exposure time
ascdsver	8.4.5	Processing system revision	ontime	37990.499926925	Sum of GTIs [s]
caldsver	4.5.2	 	ontime0	37987.358936787	Sum of GTIs [s]
date	2012-10-18T11:33:29	Date and time of file creation	ontime1	37984.217966557	Sum of GTIs [s]
revision	4	Processing version of data	ontime2	37981.077026308	Sum of GTIs [s]
			ontime3	37990.499926925	Sum of GTIs [s]
			ontime6	37984.217986494	Sum of GTIs [s]
			l1events	1060834	Number of level 1 events

2.1.4 Events

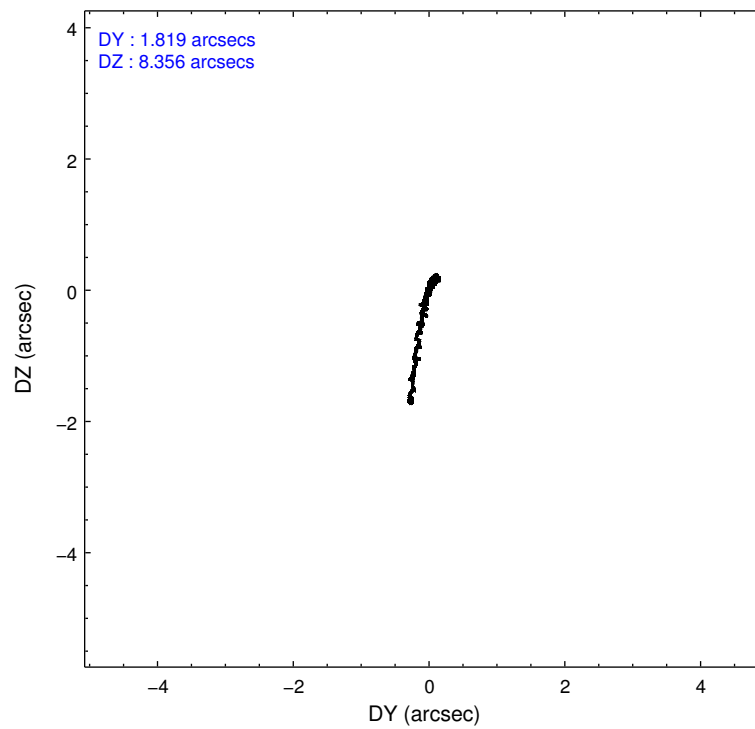
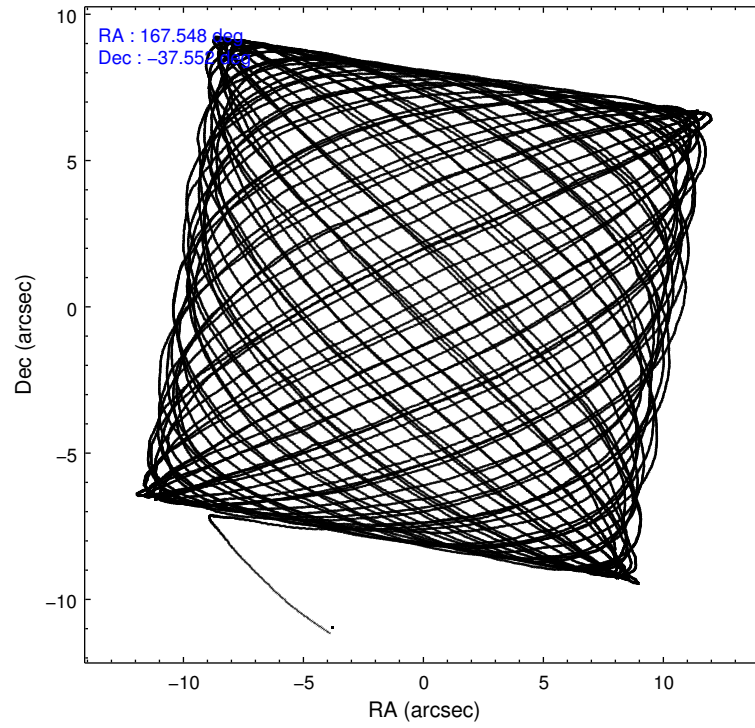
	ccd 0	ccd 1	ccd 2	ccd 3	ccd 6
level 1 events	203449	199325	226595	216046	215419
rejected events	173130	171154	200463	191740	187983
rejected %	85%	85%	88%	88%	87%

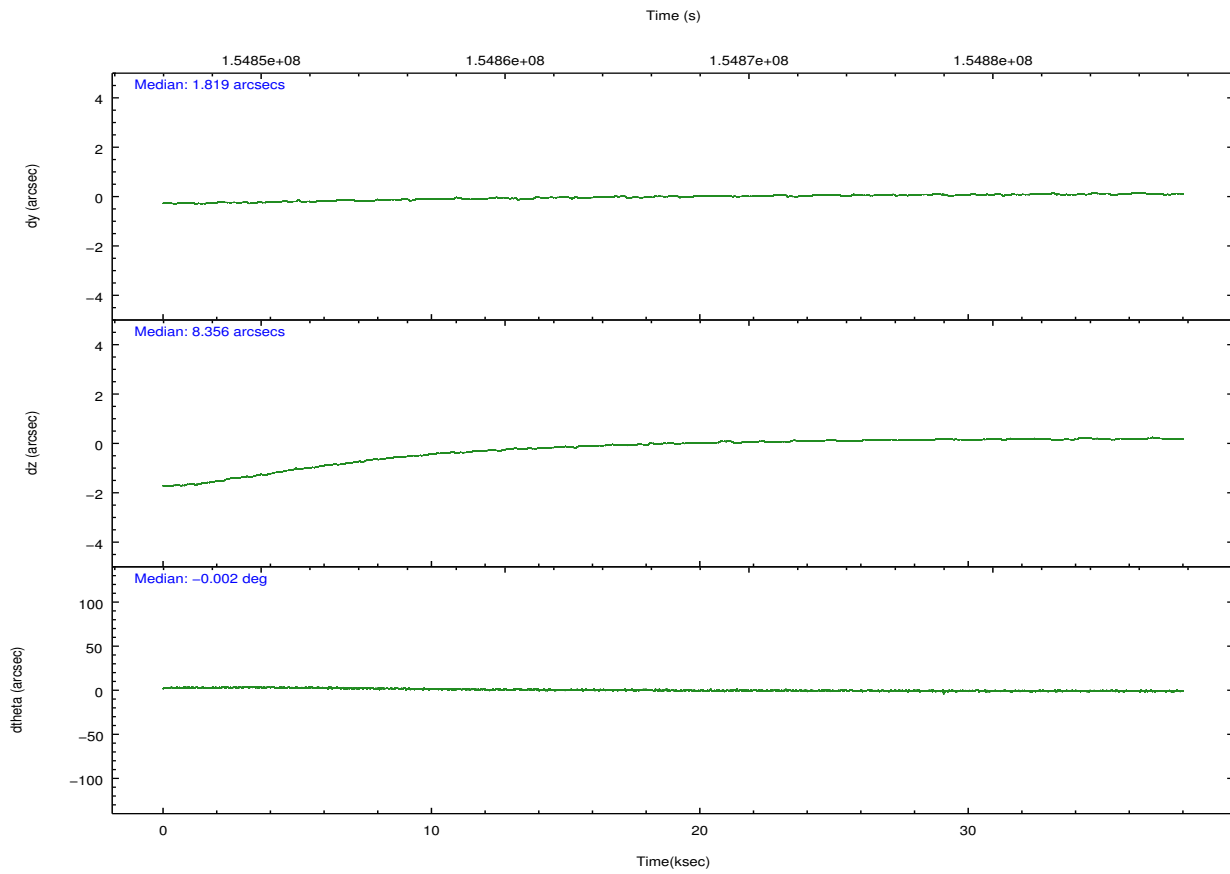
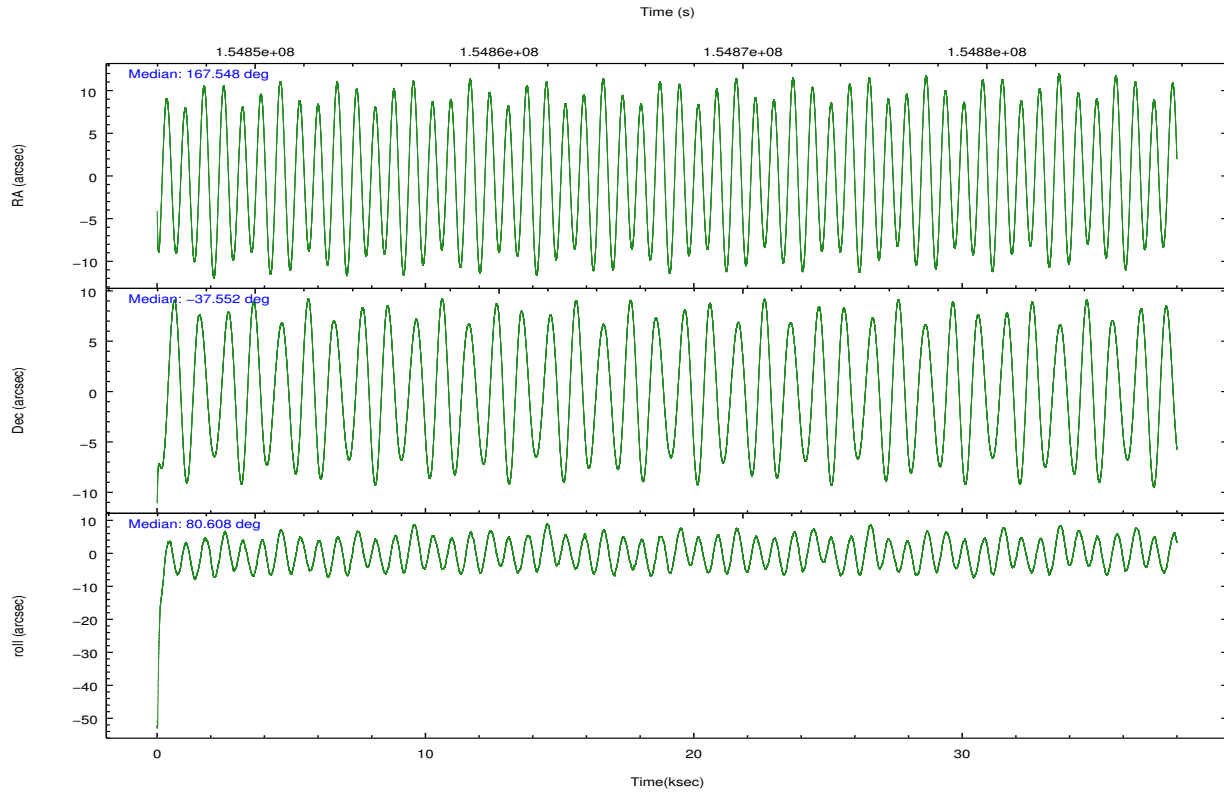
	ccd 0	ccd 1	ccd 2	ccd 3	ccd 6
grade 0 events	16084	12320	12497	11625	13434
	7%	6%	5%	5%	6%
grade 1 events	230	107	120	125	111
	0%	0%	0%	0%	0%
grade 2 events	5806	5880	5327	4524	5059
	2%	2%	2%	2%	2%
grade 3 events	2512	2663	2234	2321	2444
	1%	1%	0%	1%	1%
grade 4 events	2319	2648	2650	2293	2418
	1%	1%	1%	1%	1%
grade 5 events	6797	7327	6608	7587	7444
	3%	3%	2%	3%	3%
grade 6 events	3885	4929	3658	3806	4366
	1%	2%	1%	1%	2%
grade 7 events	165816	163451	193501	183765	180143
	81%	82%	85%	85%	83%

2.2 Compared Parameters

Parameter	Planned	Actual	Parameter	Planned	Actual
Instrument	ACIS	ACIS	Obspar format version number	7	7
Detector	ACIS-01236	ACIS-01236	Obspar file type	PREDICTED	ACTUAL
Grating	NONE	NONE	Obspar update status	NONE	UPDATED
Data mode	VFAINT	VFAINT	Number of optional ACIS chips dropped	0	0
Observation mode	POINTING	POINTING	On-chip summing requested	N	N
[deg] Pointing RA	167.560417	167.5481586101926	Subarray requested	NONE	NONE
[deg] Pointing Dec	-37.578064	-37.55246305228496	Alternating exposures requested	N	N
[deg] Pointing Roll	80.409535	80.61073732395411	[s] Primary exposure time	0.000000	3.1
[mm] SIM focus pos	-0.782348	-0.7809083437167272			
[mm] SIM defocus	0	0.001439871863259334			
[mm] SIM translation stage pos	-233.592463	-233.5899487761303			
[mm] SIM translation stage offset	0	-0.002504226799430853			
[s] Observation start time (MET)	154847985.184000	154846866.89544			
Observation start date	2002-11-28T05:18:41	2002-11-28T05:01:06			
[s] Observation end time (MET)	154885889.184000	154886203.83458			
Observation end date	2002-11-28T15:50:25	2002-11-28T15:56:43			
Read mode	TIMED	TIMED			

2.3 Aspect



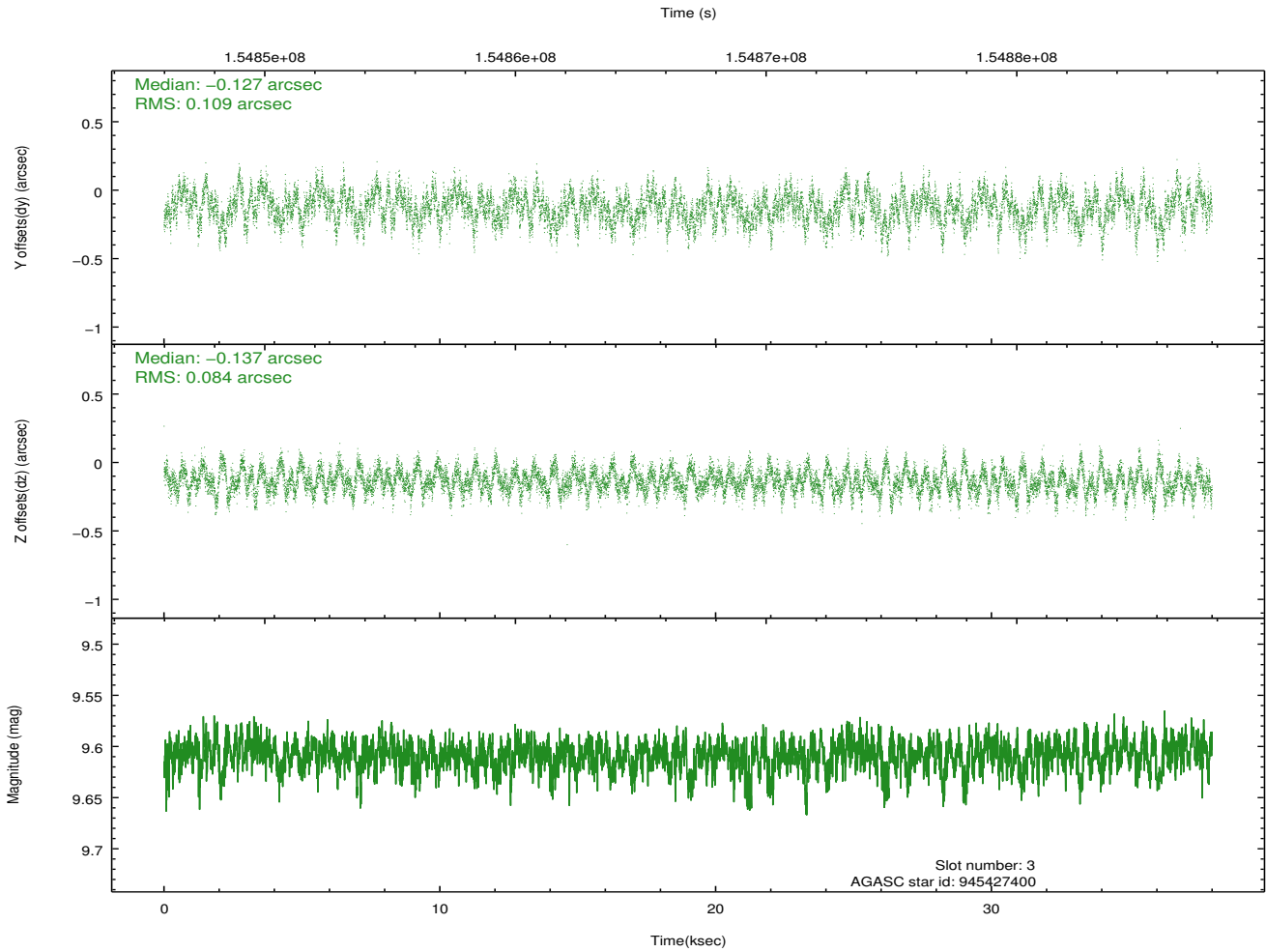
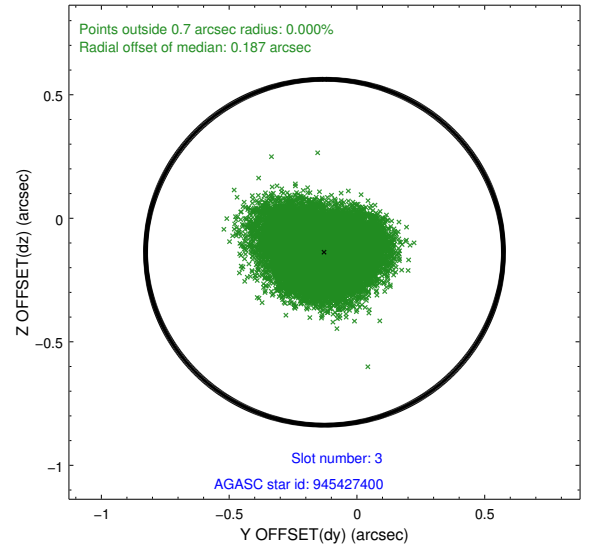
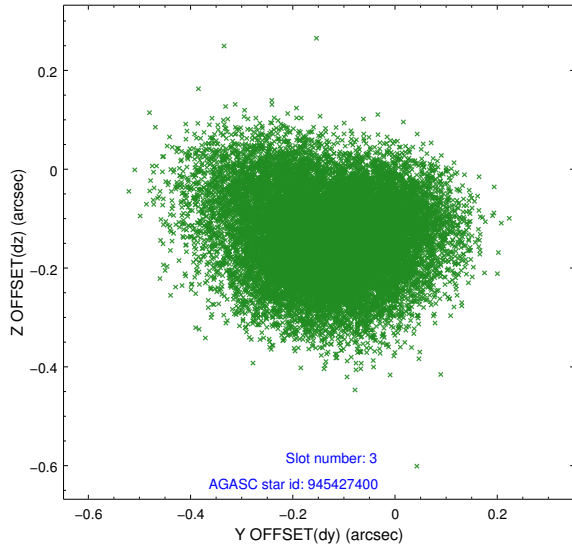


Slot Statistics

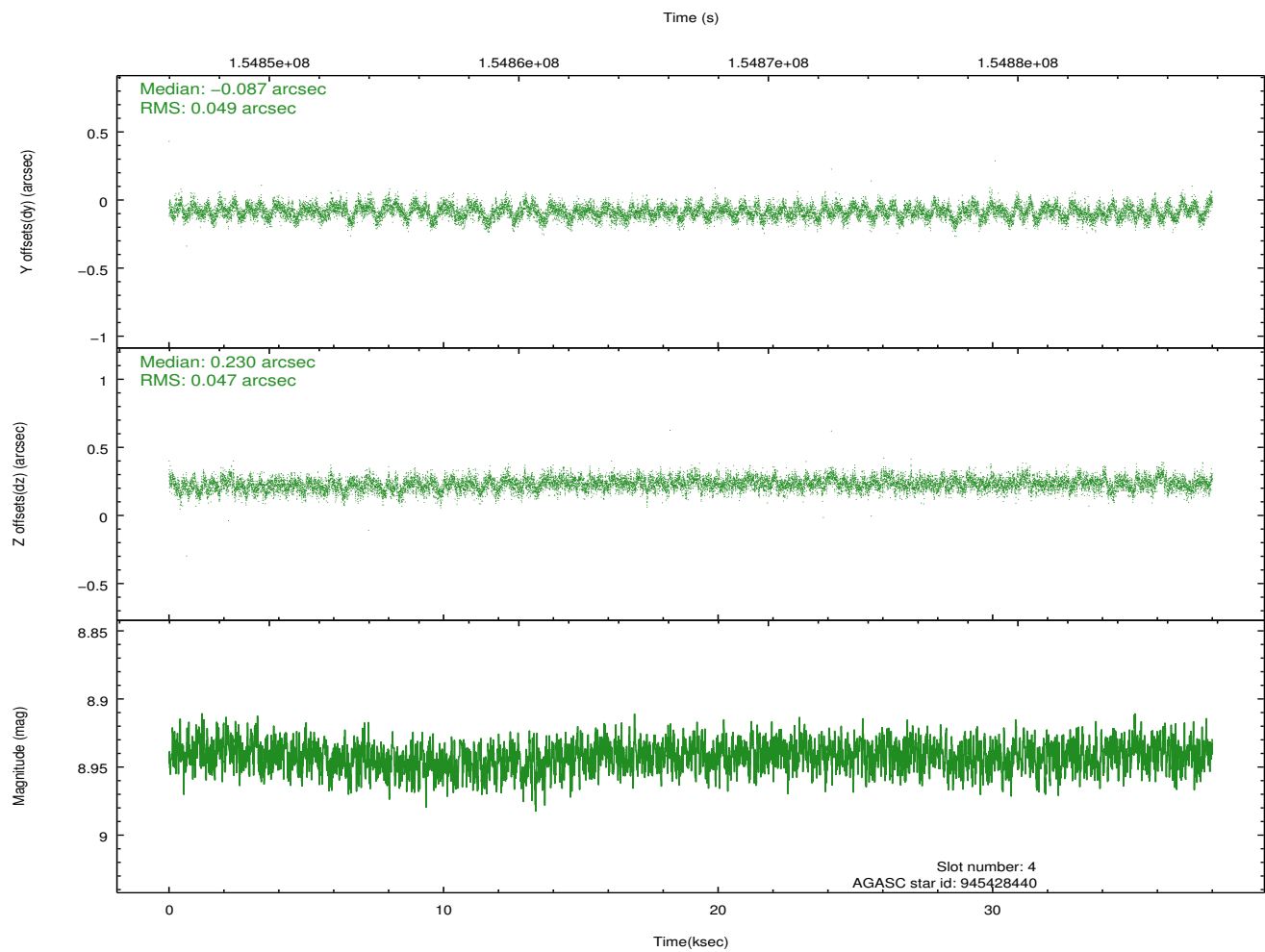
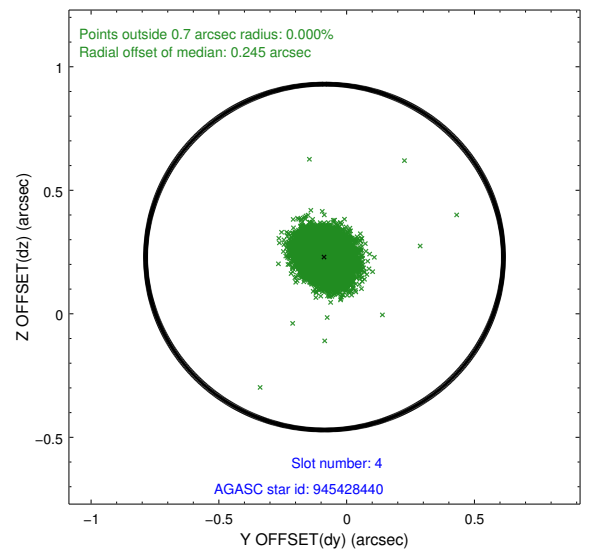
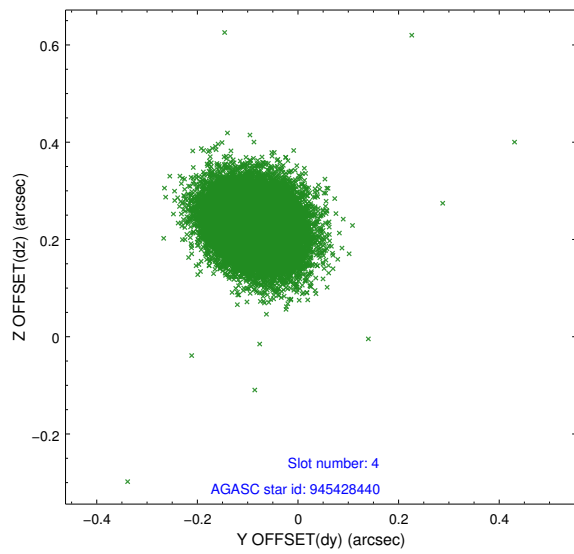
slot	status	id	mag	n_pts	med_dy	med_dz	dr1	dr2	ra	dec	mean_y	mean_z
0	FID	ACIS-I-1	7.25	9268	-0.031	0.070	0.021	0.078	0.000000	0.000000	938.01	-831.42
1	FID	ACIS-I-5	7.24	9267	-0.043	0.032	0.016	0.041	0.000000	0.000000	-1810.10	1066.06
2	FID	ACIS-I-6	7.26	9267	-0.019	-0.030	0.012	0.048	0.000000	0.000000	403.55	1710.52
3	GUIDE	945427400	9.61	18525	-0.127	-0.137	0.147	0.237	167.436818	-36.964684	2117.09	719.31
4	GUIDE	945428440	8.94	18532	-0.087	0.230	0.072	0.115	168.181474	-37.381721	986.77	-1633.78
5	GUIDE	945429720	9.44	18521	-0.082	-0.049	0.078	0.126	167.566128	-37.073280	1793.99	287.42
6	GUIDE	1012669712	9.80	18483	0.187	0.066	0.122	0.202	167.936805	-37.805872	-632.60	-1191.70
7	GUIDE	1012541888	9.24	18377	0.103	-0.112	0.114	0.193	166.640636	-38.071297	-2198.35	2272.99

2.4 Star Slots

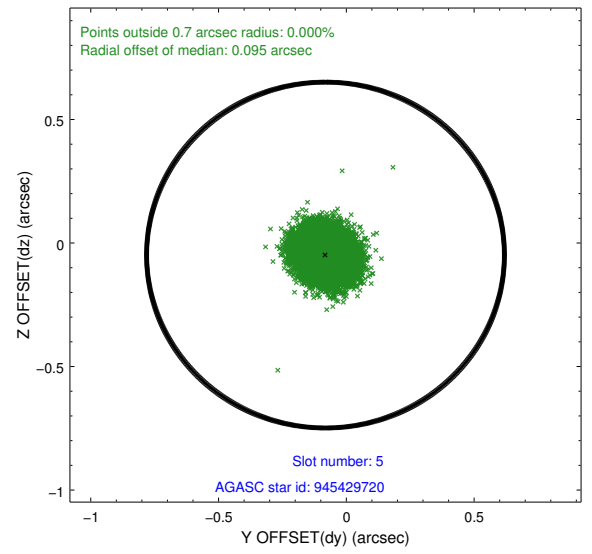
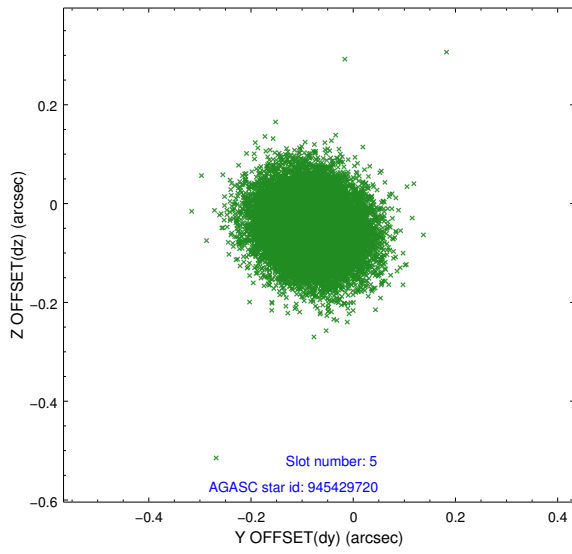
2.4.1 Slot 3



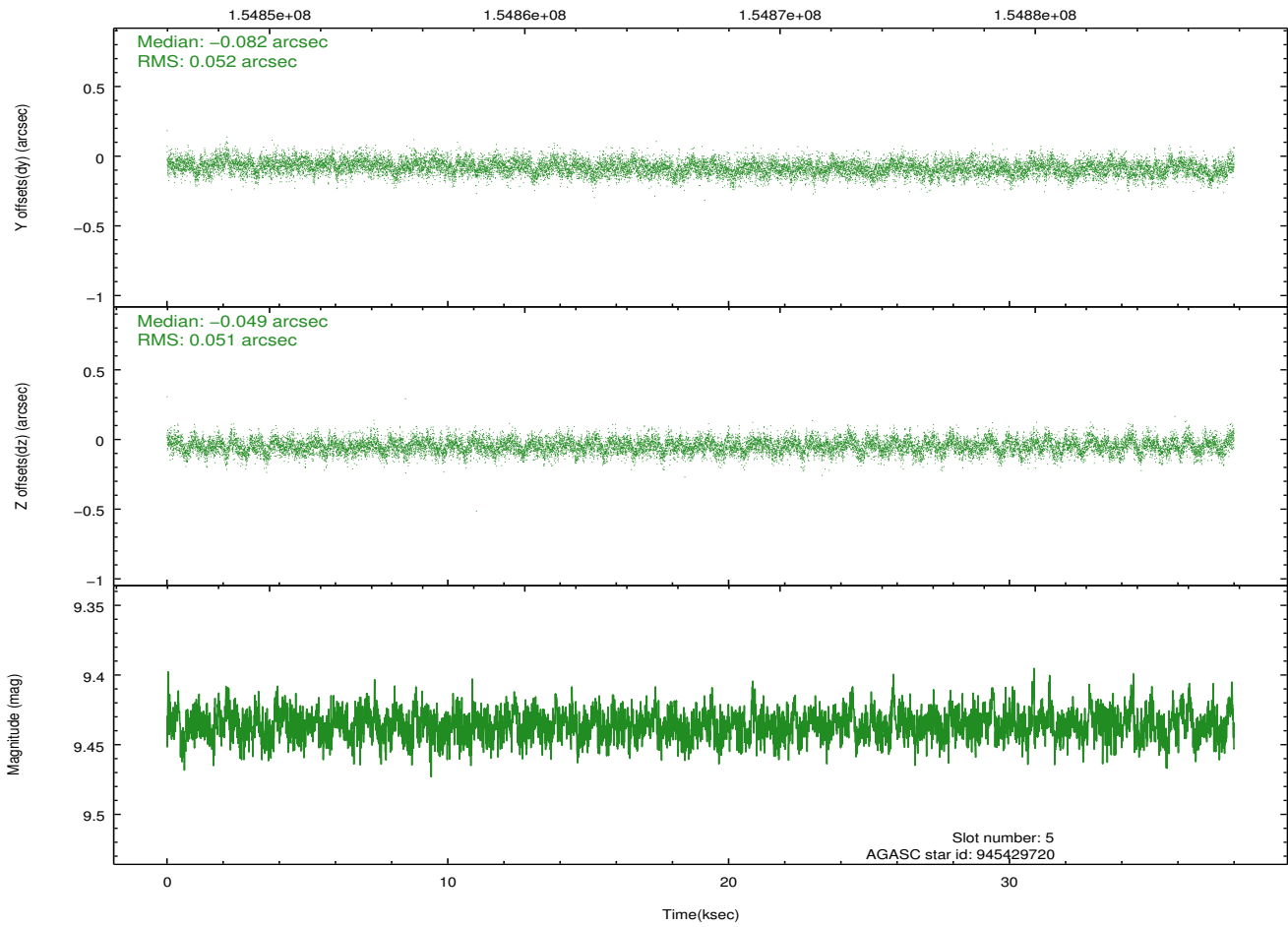
2.4.2 Slot 4



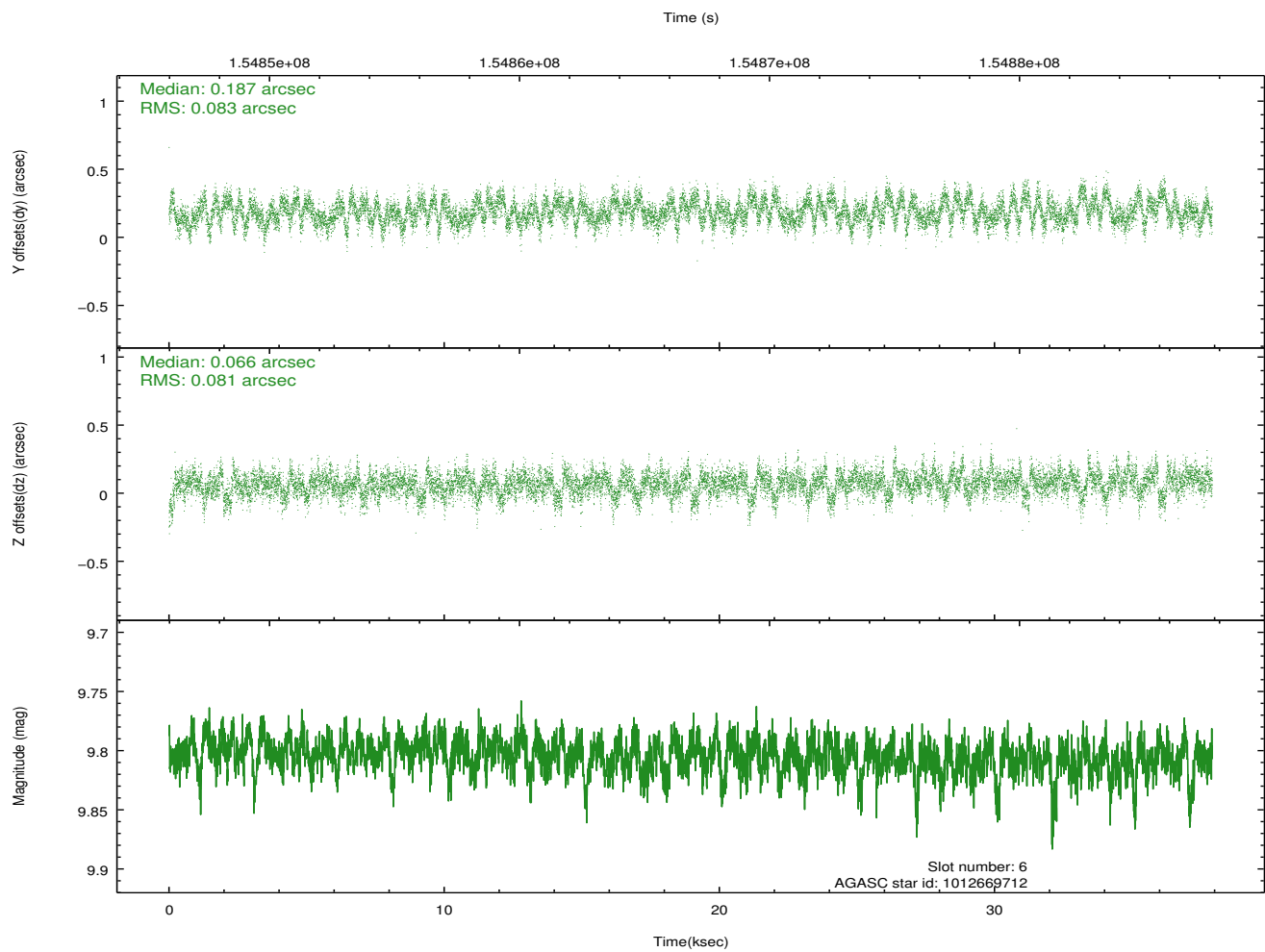
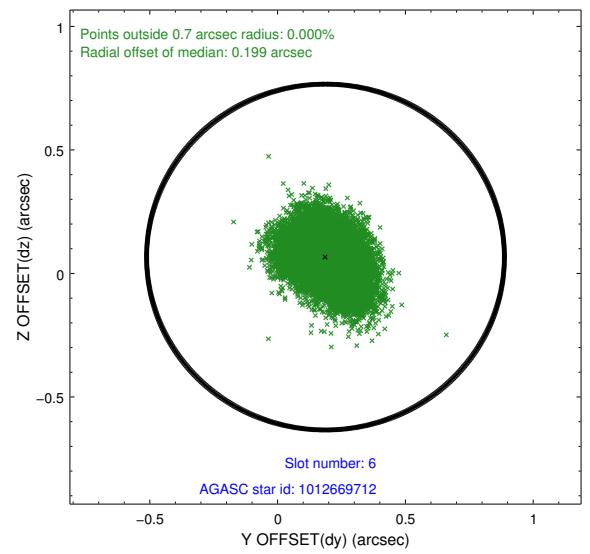
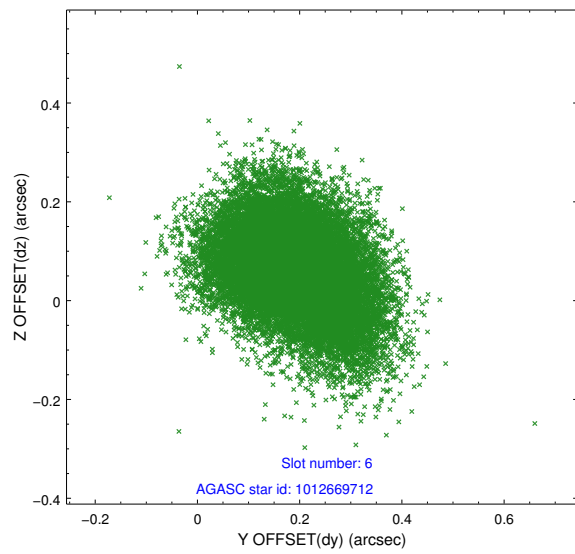
2.4.3 Slot 5



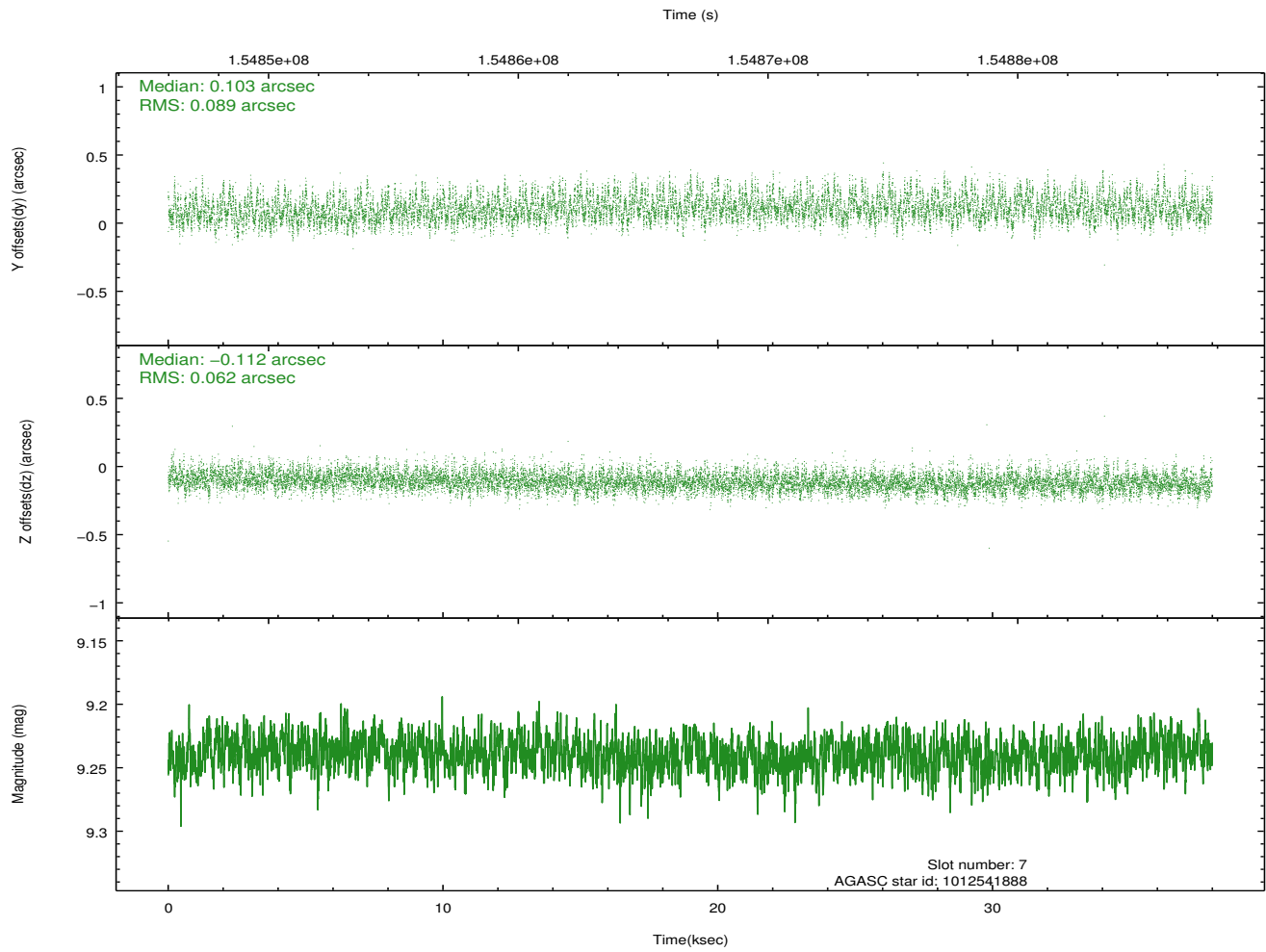
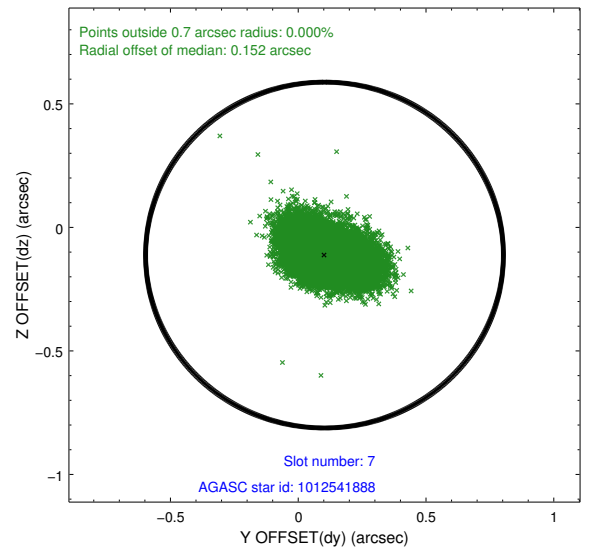
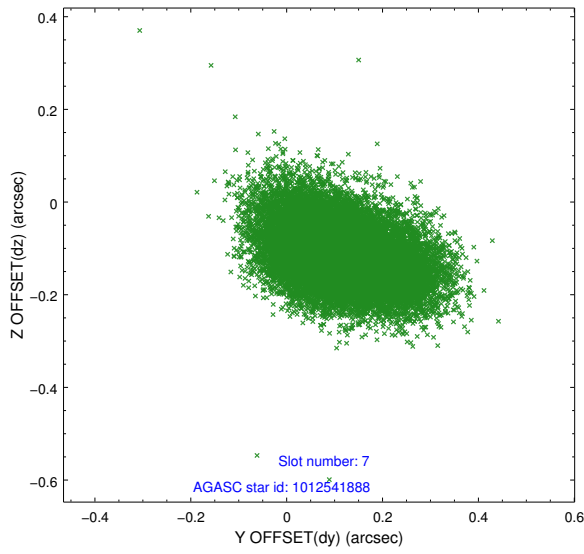
Time (s)



2.4.4 Slot 6

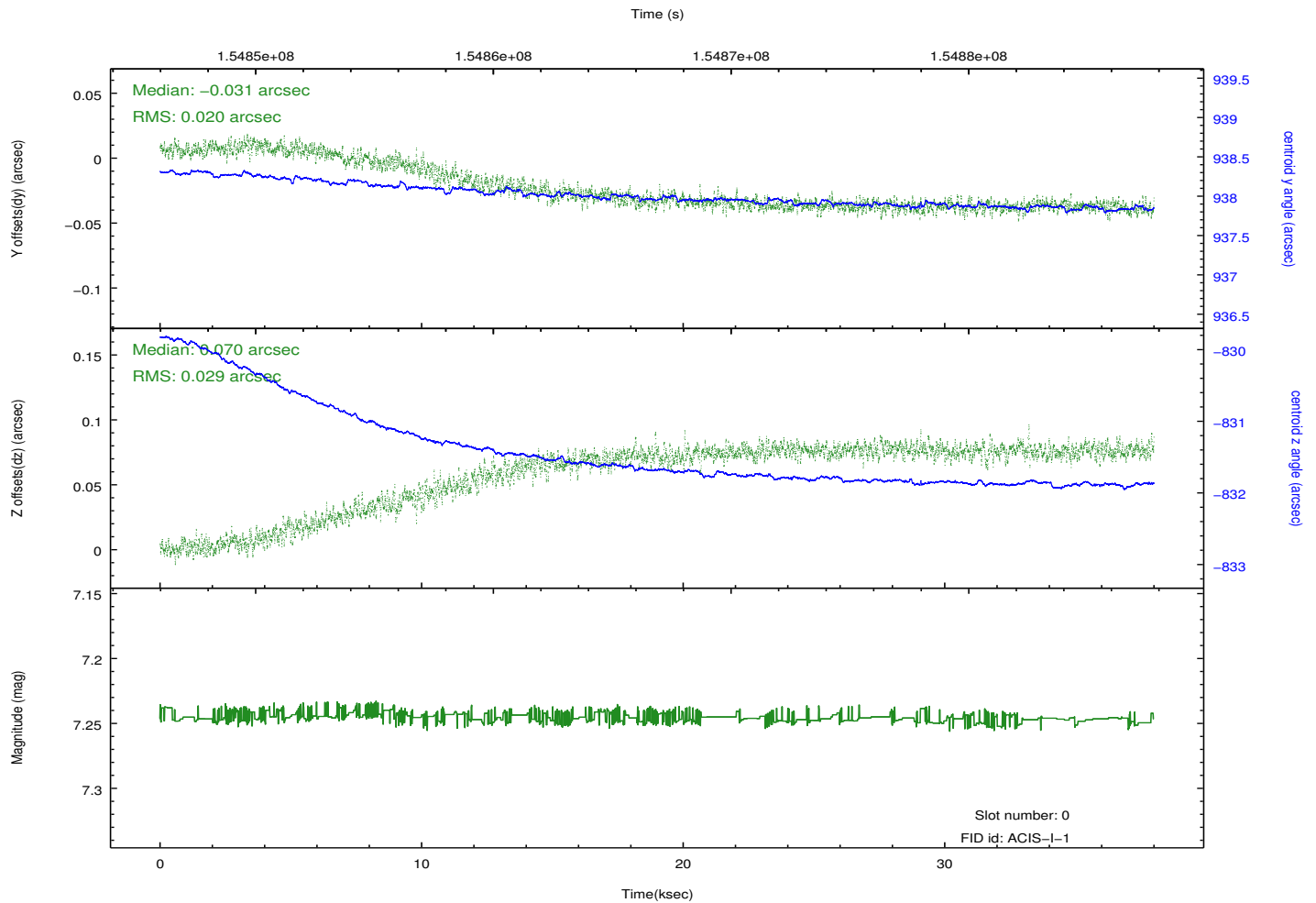
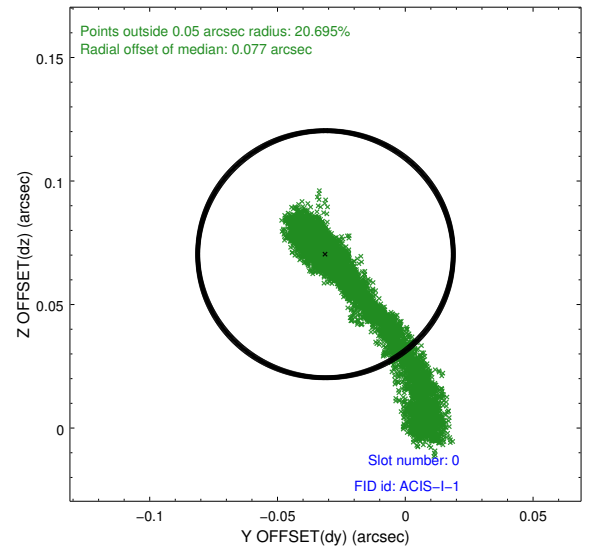
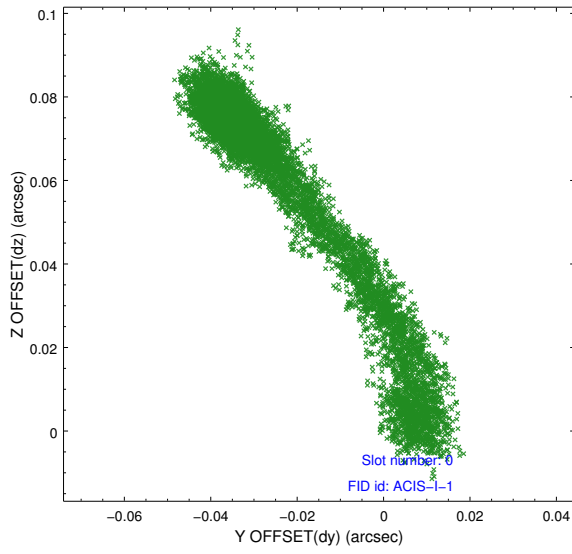


2.4.5 Slot 7

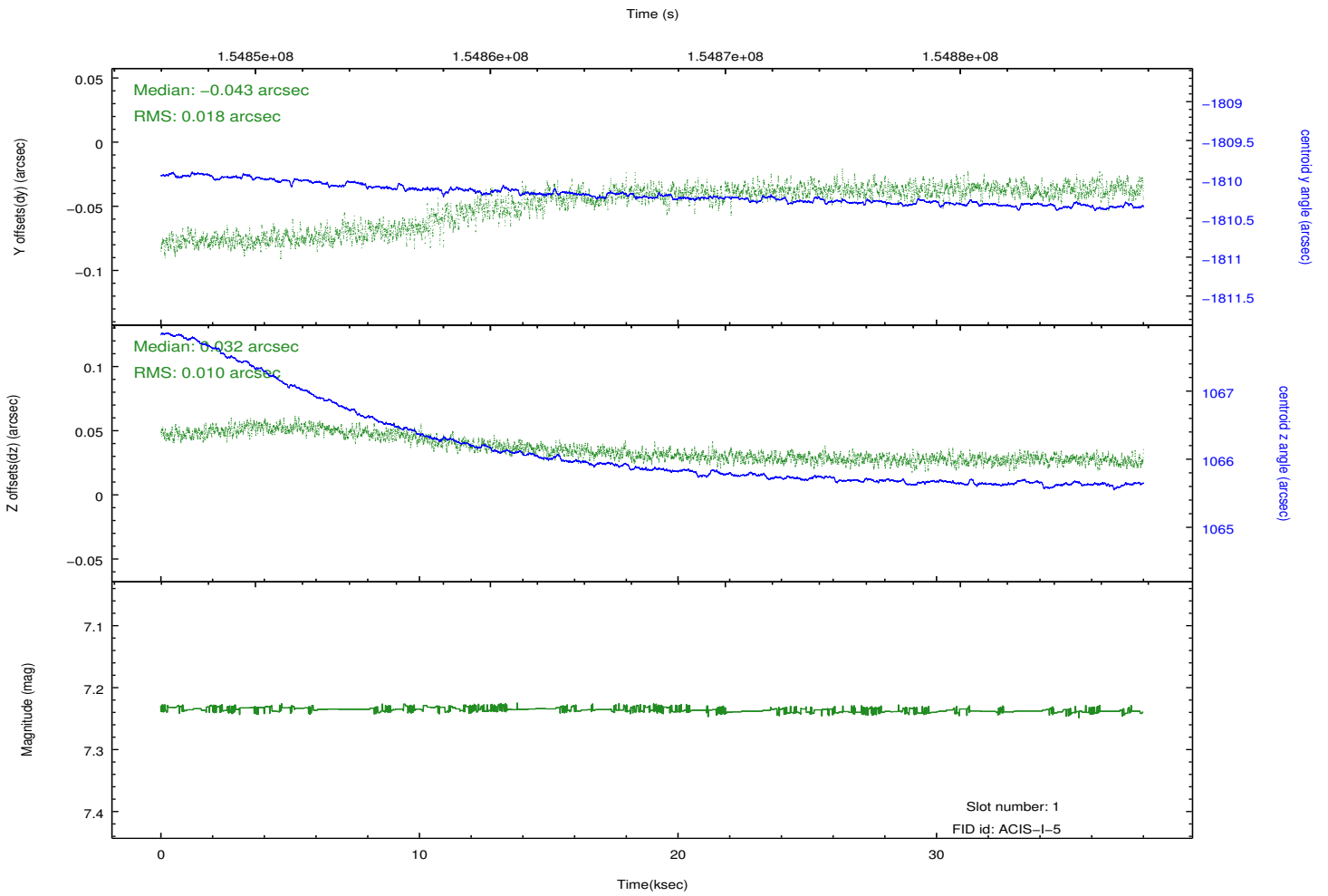
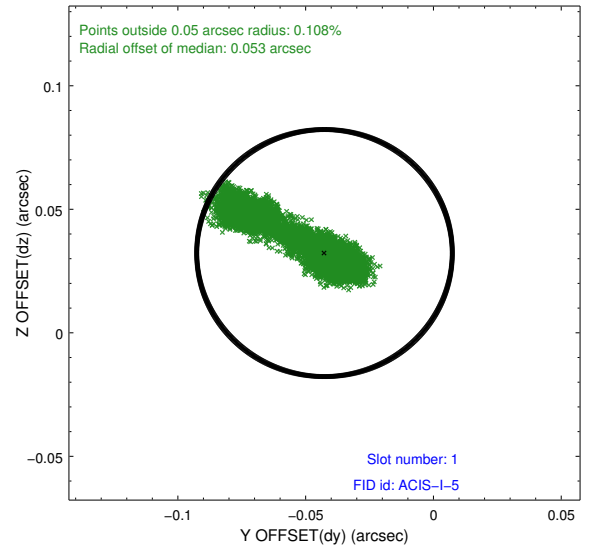
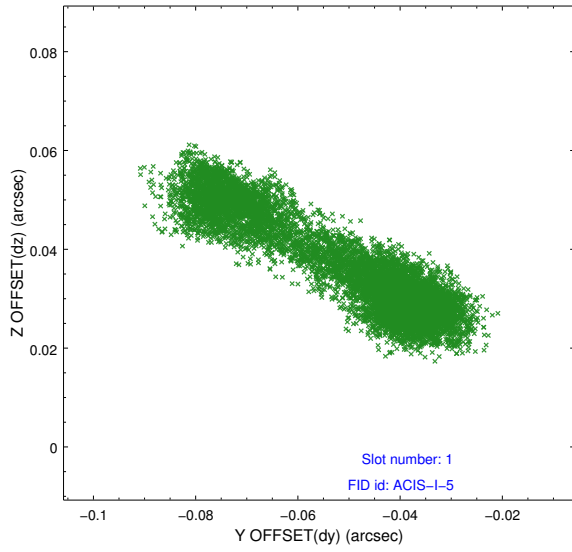


2.5 FID Slots

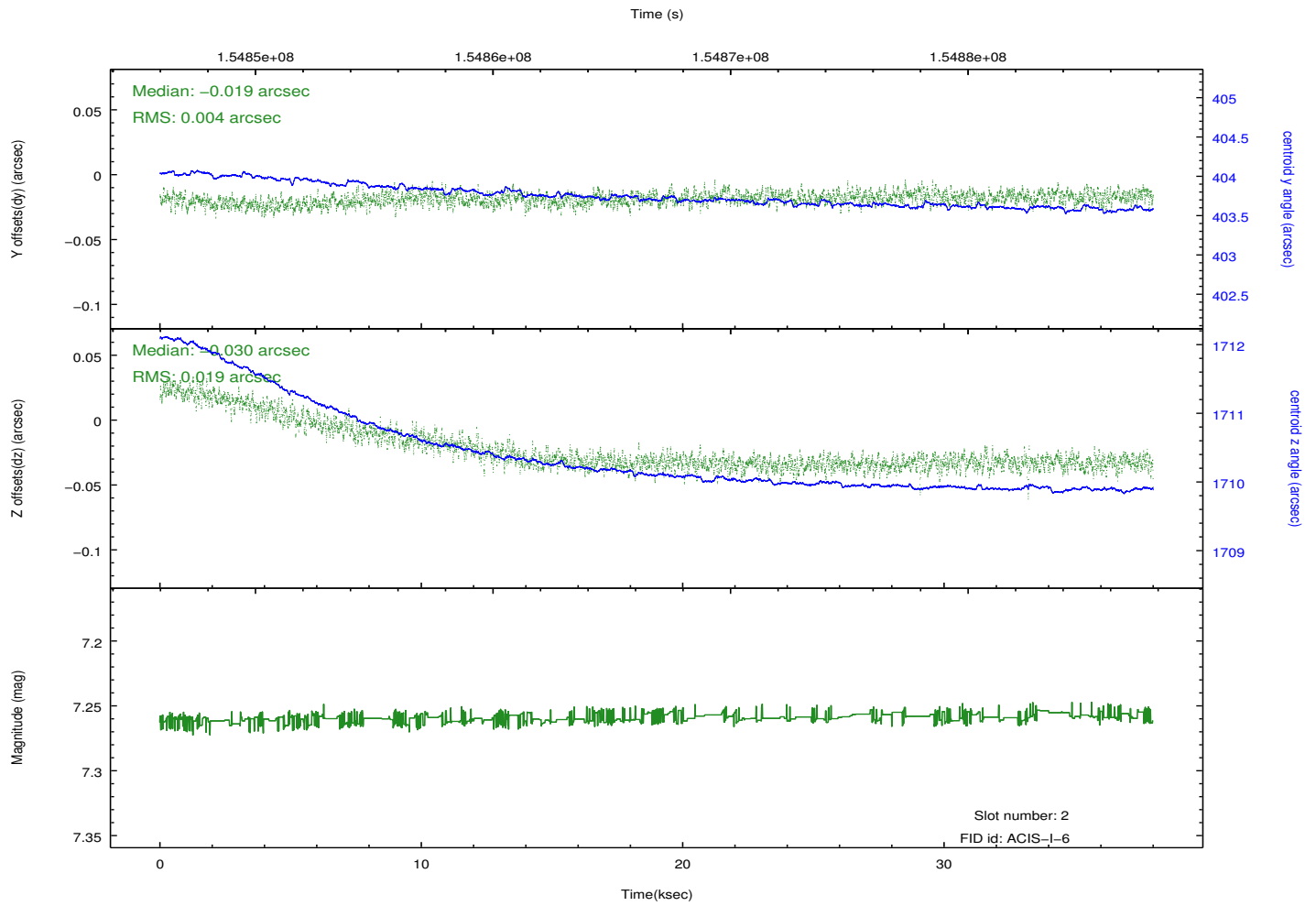
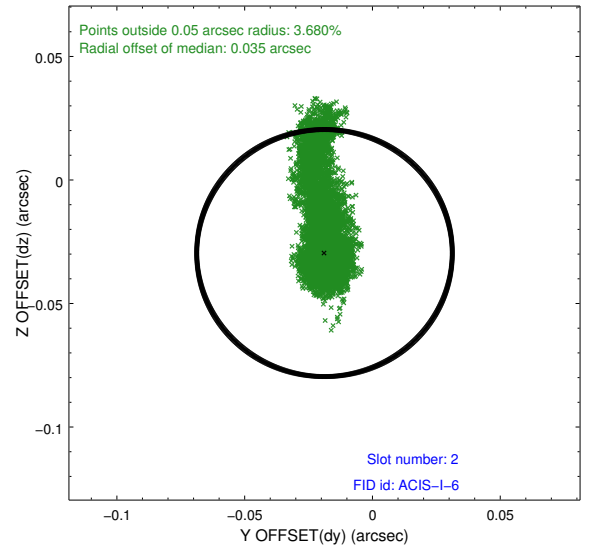
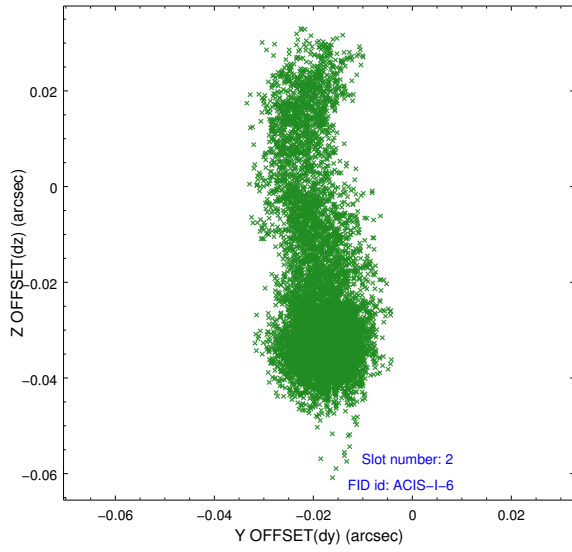
2.5.1 Slot 0



2.5.2 Slot 1



2.5.3 Slot 2



A Summary

A.1 Status

V&V Scientist	Jen Lauer
V&V Date (YYYY-MM-DD)	2012.10.28
V&V Edition	1
V&V Disposition and Status	OK
V&V Charge Time	37.99

A.2 Comments