

V&V Reference Report

L2 ASCDS Version : 8.4.5

Observation 3267 - L2 Version 3
Chandra X-Ray Center

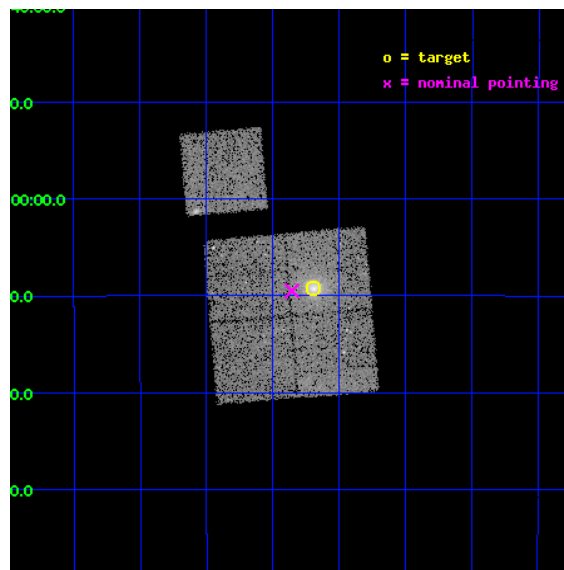
L2 Processing Date : Sep 27 2012

Contents

1	Front	2
2	OBI	3
2.1	OBI	3
2.1.1	Images	3
2.1.2	Bias	3
2.1.3	Parameters	4
2.1.4	Events	4
2.2	Compared Parameters	5
2.3	Aspect	6
2.4	Star Slots	9
2.4.1	Slot 3	9
2.4.2	Slot 4	10
2.4.3	Slot 5	11
2.4.4	Slot 6	12
2.4.5	Slot 7	13
2.5	FID Slots	14
2.5.1	Slot 0	14
2.5.2	Slot 1	15
2.5.3	Slot 2	16
A	Summary	17
A.1	Status	17
A.2	Comments	17

1 Front

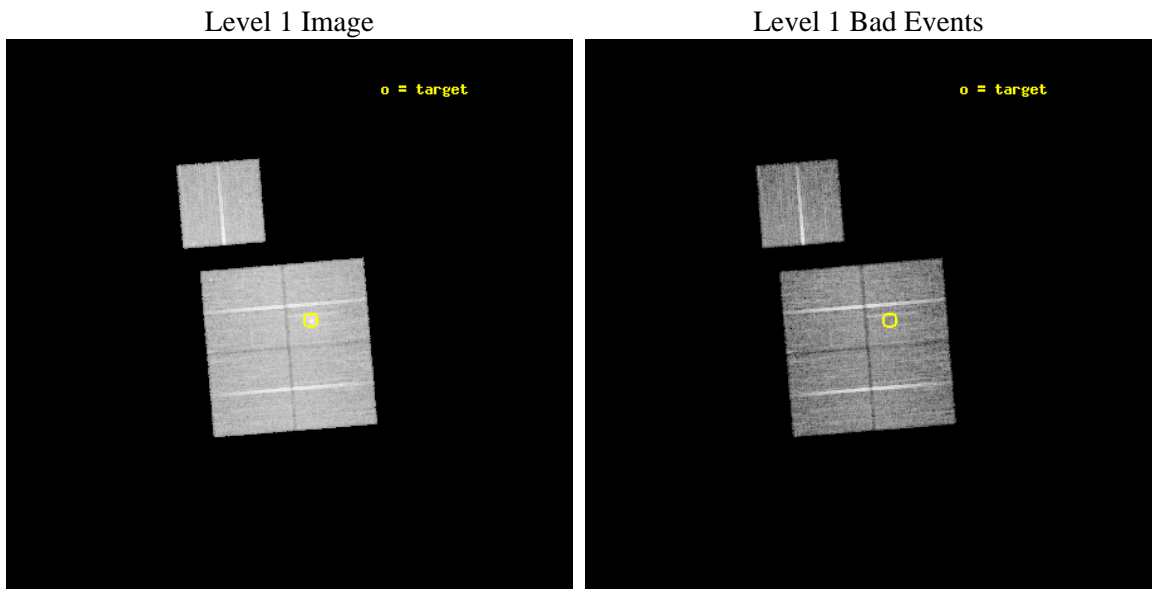
seq_num	800267	Sequence number
obs_id	3267	Observation id
title	MACS: THE X-RAY PROPERTIES OF THE MOST MASSIVE GALAXY CLUSTERS AT Z>0.3	Proposal title
observer	Dr. Harald Ebeling	Principal investigator
object	MACSJ0257.6-2209	Source name
dtcycle	0	
cycle	P	events from which exps? Prim/Second/Both
ra_targ	44.42375	Observer's specified target RA [deg]
dec_targ	-22.15333	Observer's specified target Dec [deg]
ra_nom	44.464097568549	Nominal RA [deg]
dec_nom	-22.158358296445	Nominal Dec [deg]
roll_nom	355.2881562203	Nominal Roll [deg]
revision	3	Processing version of data
ontime	20738.958969951	Sum of GTIs [s]
livetime	20467.989203209	Livetime [s]
ontime0	20738.958989874	Sum of GTIs [s]
ontime1	20738.958989859	Sum of GTIs [s]
ontime2	20735.818009689	Sum of GTIs [s]
ontime3	20738.958969951	Sum of GTIs [s]
ontime6	20738.958959952	Sum of GTIs [s]
l2events	54904	Number of level 2 events



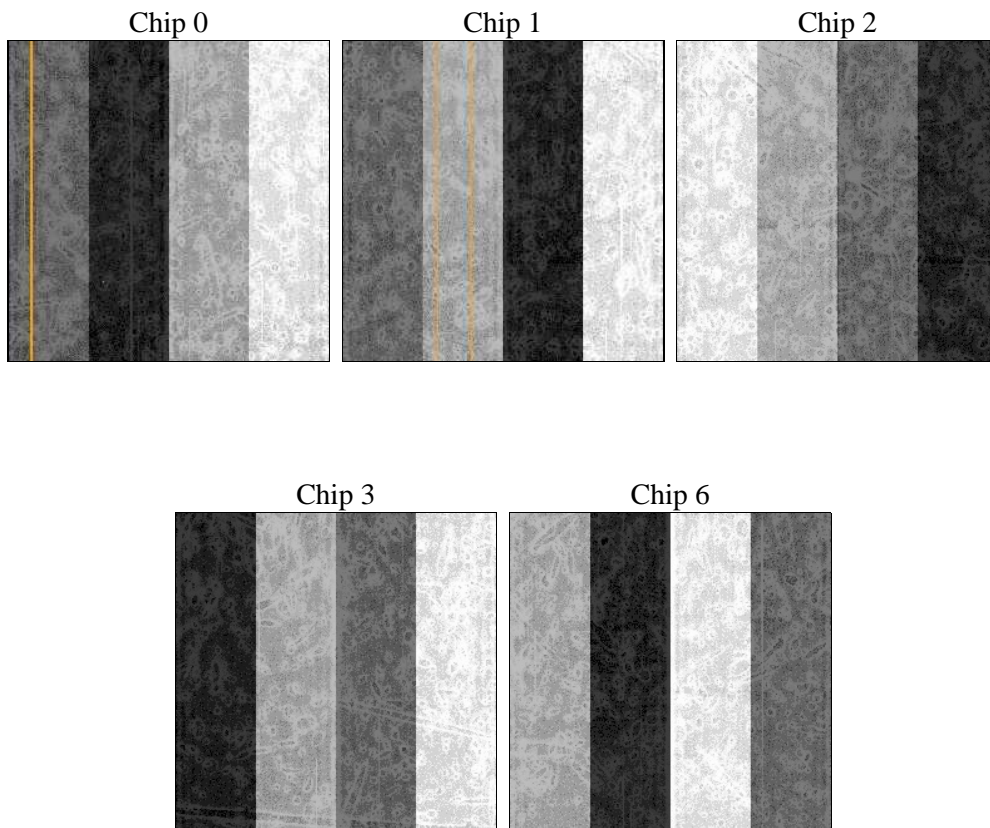
2 OBI

2.1 OBI

2.1.1 Images



2.1.2 Bias



2.1.3 Parameters

obi_num	0	Obi number	sched_exp_time	20598.456000	[s] Scheduled observation exposure time
ascdsver	8.4.5	Processing system revision	ontime	20738.958969951	Sum of GTIs [s]
caldbver	4.5.1.1	 	ontime0	20738.958989874	Sum of GTIs [s]
date	2012-09-27T02:00:01	Date and time of file creation	ontime1	20738.958989859	Sum of GTIs [s]
revision	3	Processing version of data	ontime2	20735.818009689	Sum of GTIs [s]
			ontime3	20738.958969951	Sum of GTIs [s]
			ontime6	20738.958959952	Sum of GTIs [s]
			l1events	597013	Number of level 1 events

2.1.4 Events

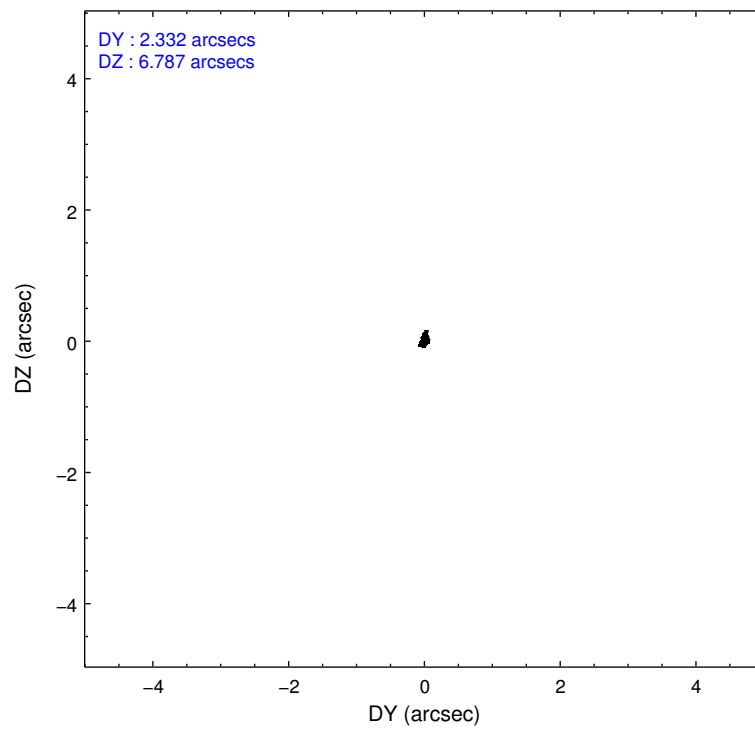
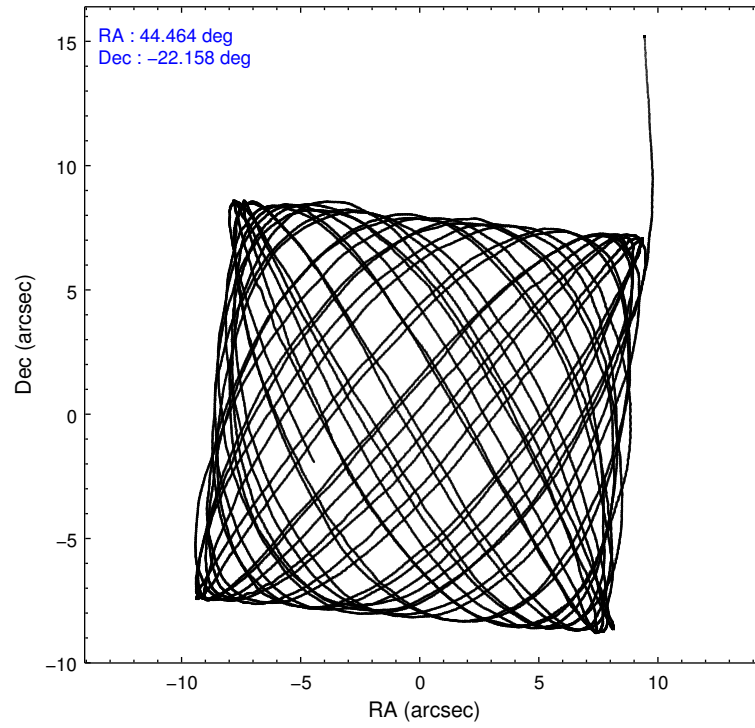
	ccd 0	ccd 1	ccd 2	ccd 3	ccd 6
level 1 events	111788	113949	123956	128763	118557
rejected events	100674	101214	112329	110768	106738
rejected %	90%	88%	90%	86%	90%

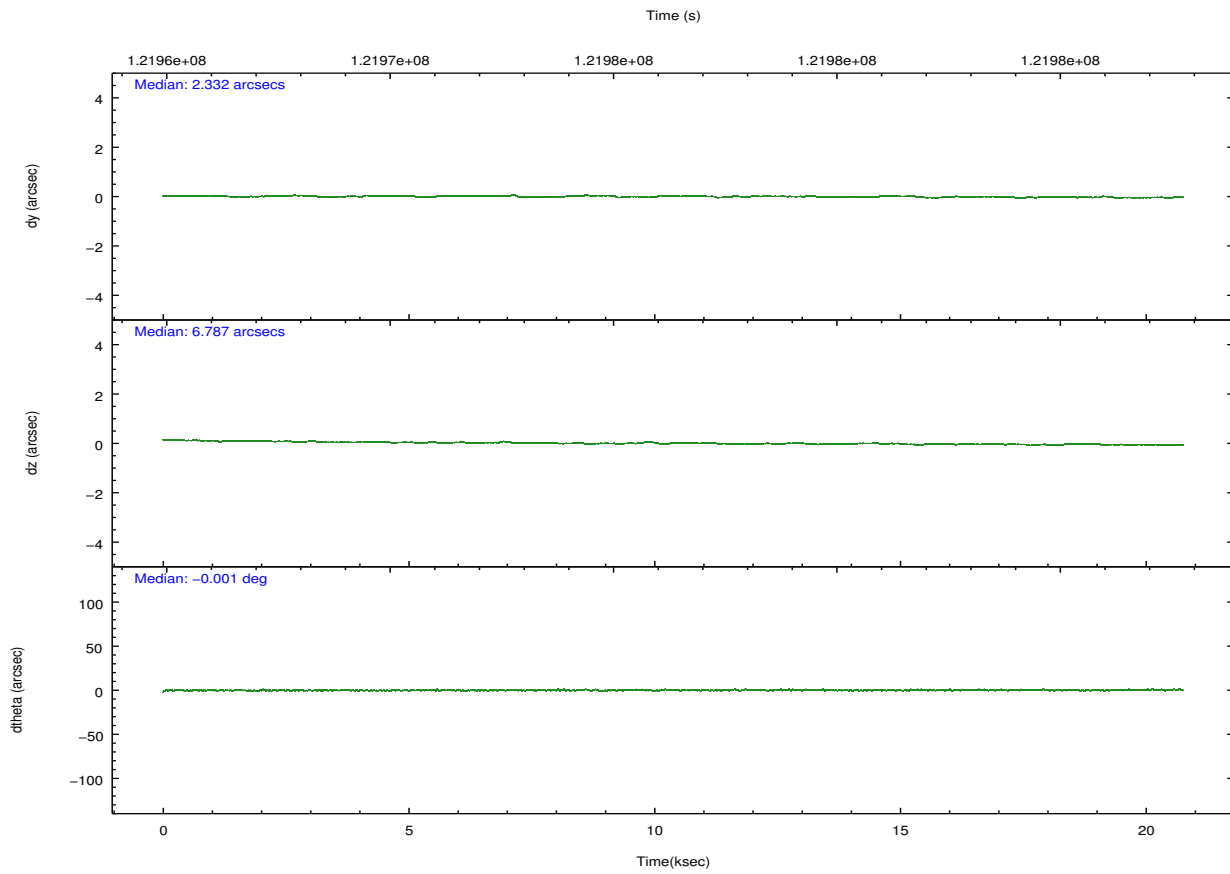
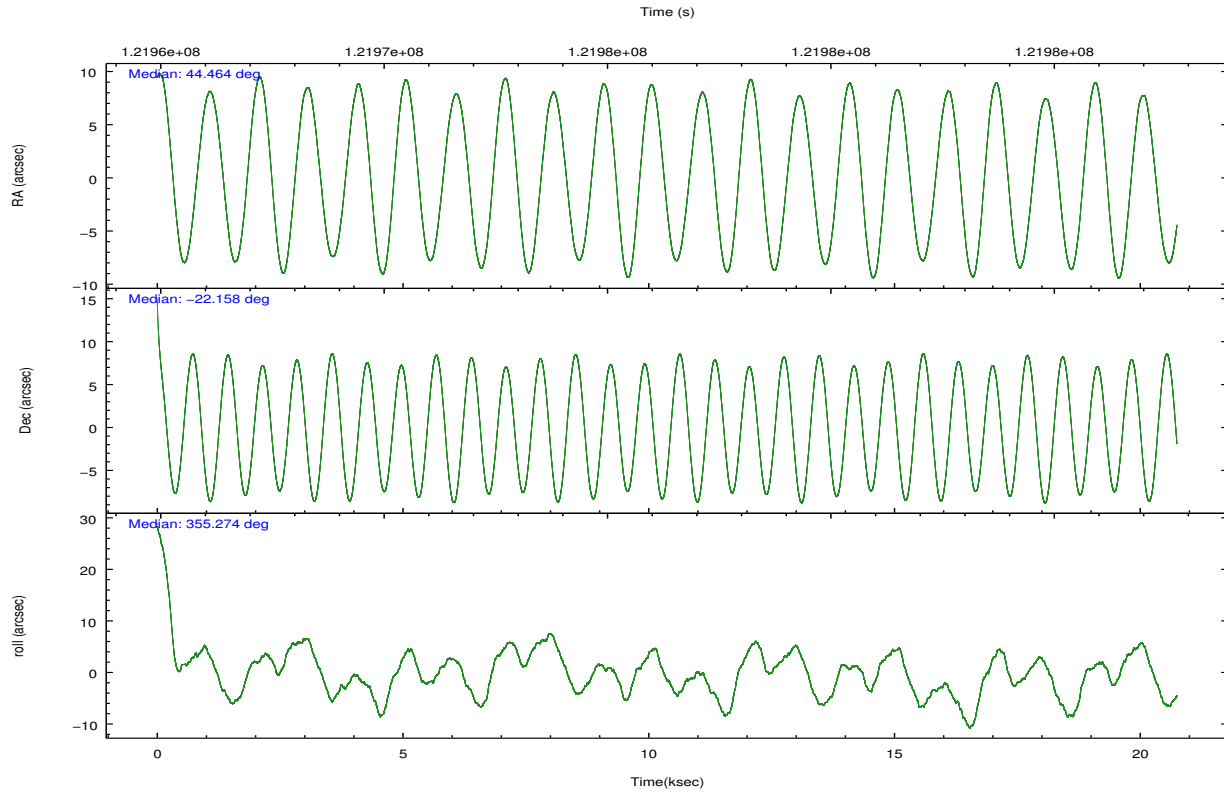
	ccd 0	ccd 1	ccd 2	ccd 3	ccd 6
grade 0 events	4268	5340	4863	10413	4844
	3%	4%	3%	8%	4%
grade 1 events	51	49	46	78	56
	0%	0%	0%	0%	0%
grade 2 events	2755	2864	2882	3190	2502
	2%	2%	2%	2%	2%
grade 3 events	1457	1479	1265	1421	1418
	1%	1%	1%	1%	1%
grade 4 events	1261	1482	1277	1436	1427
	1%	1%	1%	1%	1%
grade 5 events	3864	4229	3710	4064	4348
	3%	3%	2%	3%	3%
grade 6 events	2281	2588	2184	2469	2547
	2%	2%	1%	1%	2%
grade 7 events	95851	95918	107729	105692	101415
	85%	84%	86%	82%	85%

2.2 Compared Parameters

Parameter	Planned	Actual	Parameter	Planned	Actual
Instrument	ACIS	ACIS	Obspar format version number	7	7
Detector	ACIS-01236	ACIS-01236	Obspar file type	PREDICTED	ACTUAL
Grating	NONE	NONE	Obspar update status	NONE	UPDATED
Data mode	VFAINT	VFAINT	Number of optional ACIS chips dropped	0	0
Observation mode	POINTING	POINTING	On-chip summing requested	N	N
[deg] Pointing RA	44.437357	44.46409756854946	Subarray requested	NONE	NONE
[deg] Pointing Dec	-22.170140	-22.15835829644461	Alternating exposures requested	N	N
[deg] Pointing Roll	355.069379	355.2881562203025	[s] Primary exposure time	0.000000	3.1
[mm] SIM focus pos	-0.782348	-0.7809083437167272			
[mm] SIM defocus	0	0.001439871863259334			
[mm] SIM translation stage pos	-227.742463	-227.734108438797			
[mm] SIM translation stage offset	-5.85	-5.858344564132665			
[s] Observation start time (MET)	121966108.184000	121964279.25354			
Observation start date	2001-11-12T15:27:24	2001-11-12T14:57:59			
[s] Observation end time (MET)	121986706.184000	121987020.41695			
Observation end date	2001-11-12T21:10:42	2001-11-12T21:17:00			
Read mode	TIMED	TIMED			

2.3 Aspect



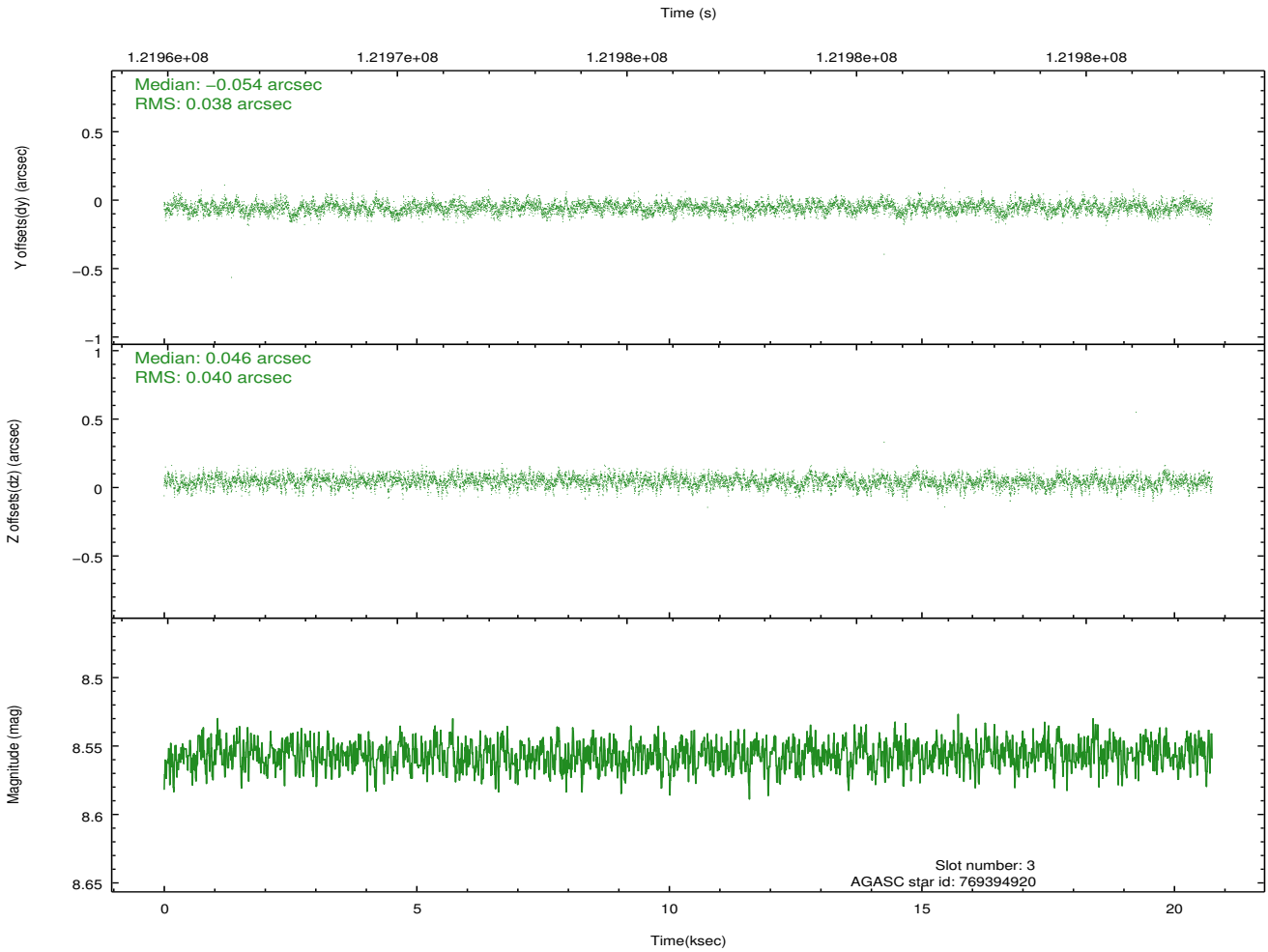
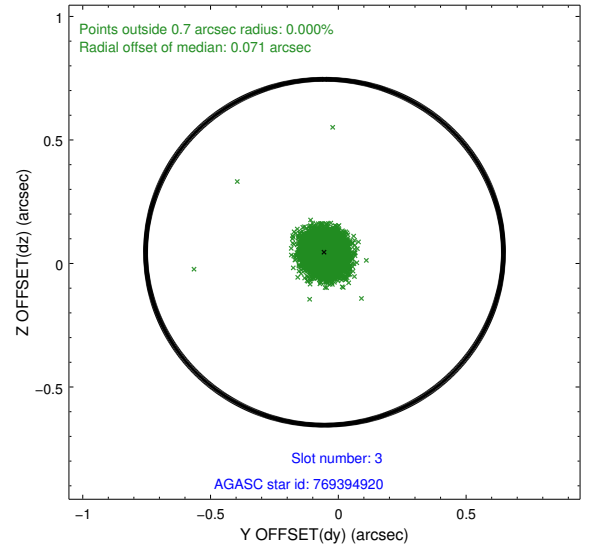
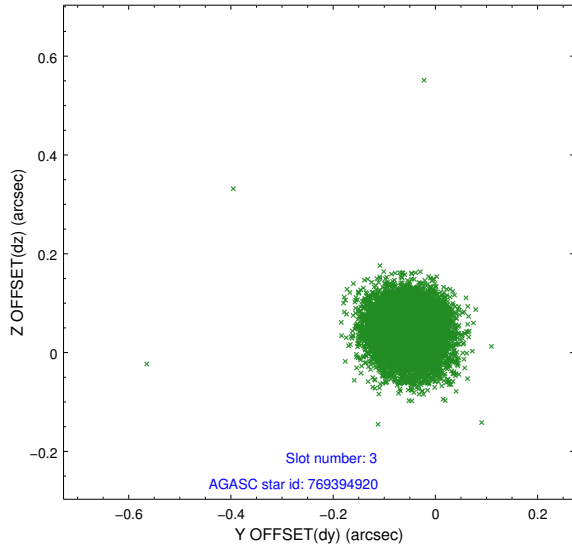


Slot Statistics

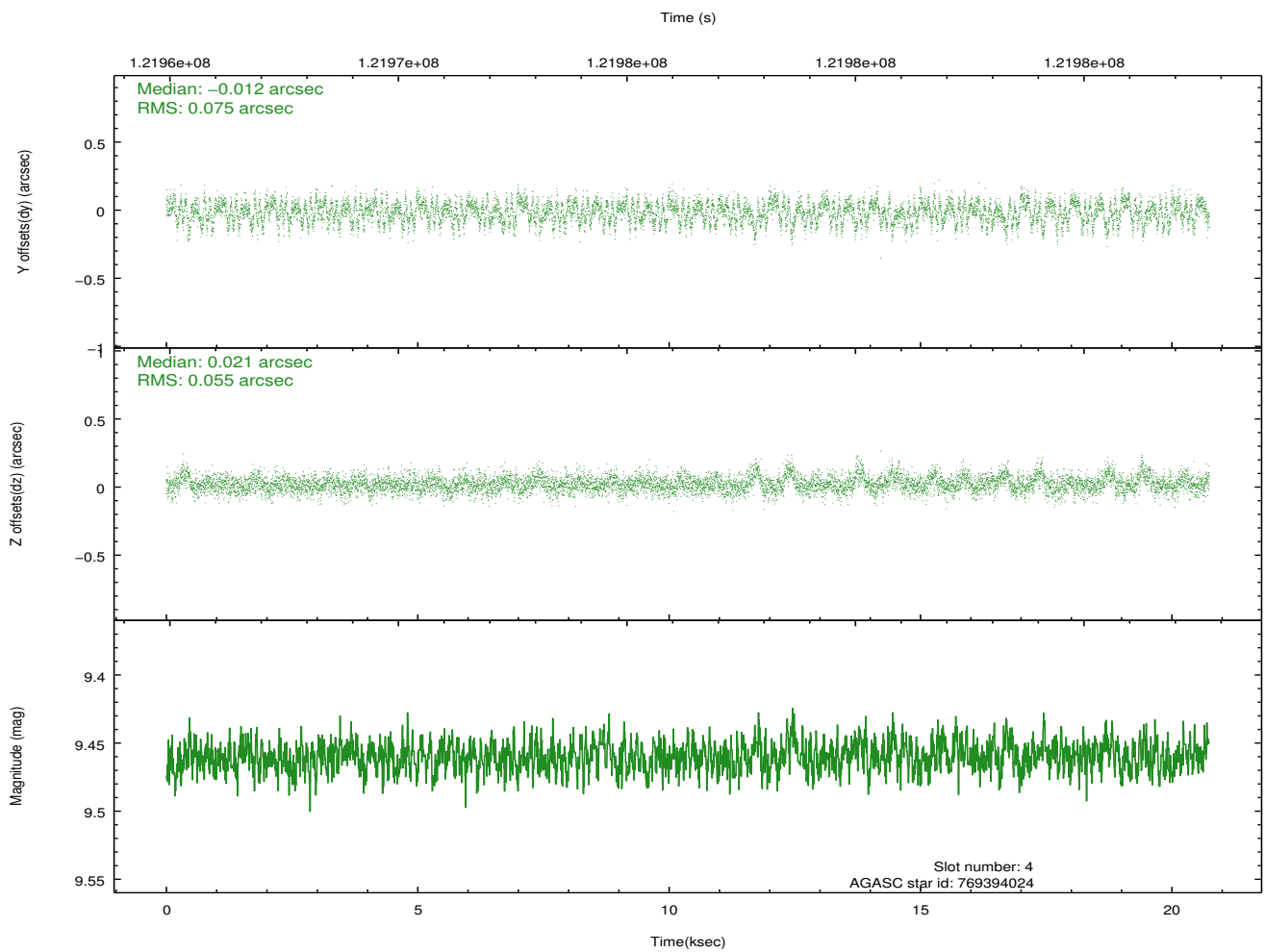
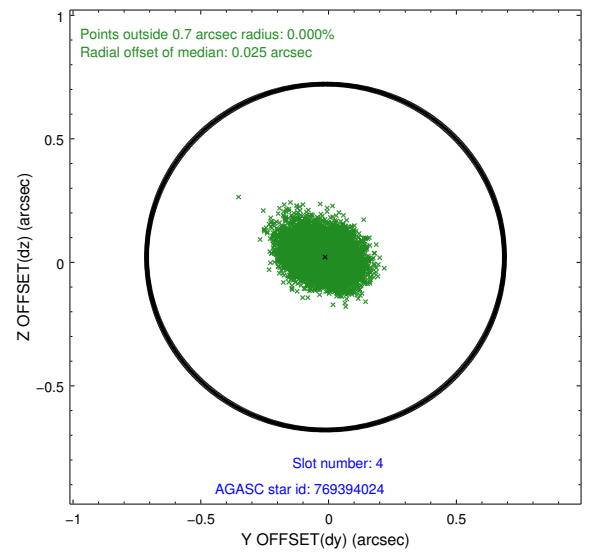
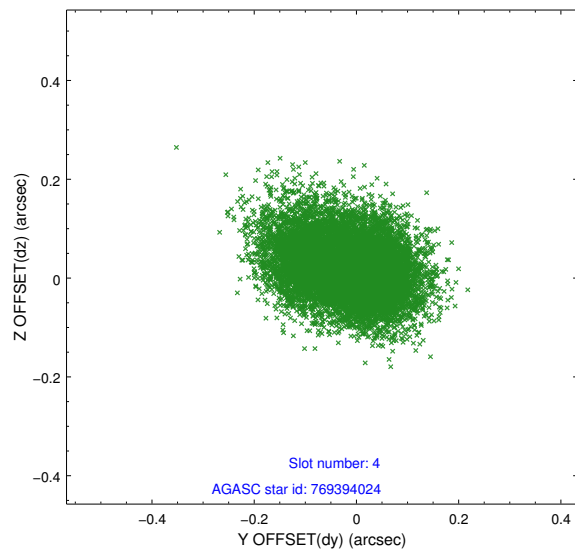
slot	status	id	mag	n_pts	med_dy	med_dz	dr1	dr2	ra	dec	mean_y	mean_z
0	FID	ACIS-I-1	7.25	5060	0.053	0.000	0.006	0.011	0.000000	0.000000	937.40	-950.44
1	FID	ACIS-I-5	7.23	5060	-0.112	0.091	0.007	0.012	0.000000	0.000000	-1810.73	947.08
2	FID	ACIS-I-6	7.25	5061	-0.032	-0.020	0.008	0.013	0.000000	0.000000	402.72	1591.63
3	GUIDE	769394920	8.56	10122	-0.054	0.046	0.058	0.095	44.157887	-22.310099	-882.84	-582.87
4	GUIDE	769394024	9.46	10122	-0.012	0.021	0.099	0.161	43.995957	-21.614914	-1643.26	1861.81
5	GUIDE	843711168	9.95	10115	-0.013	0.061	0.115	0.191	44.260720	-22.702367	-418.73	-1959.61
6	GUIDE	769399776	9.49	10114	0.027	-0.117	0.091	0.145	44.301664	-22.091375	-474.66	242.92
7	GUIDE	843711696	8.66	10116	0.055	-0.009	0.069	0.111	44.382866	-22.537728	-65.71	-1334.08

2.4 Star Slots

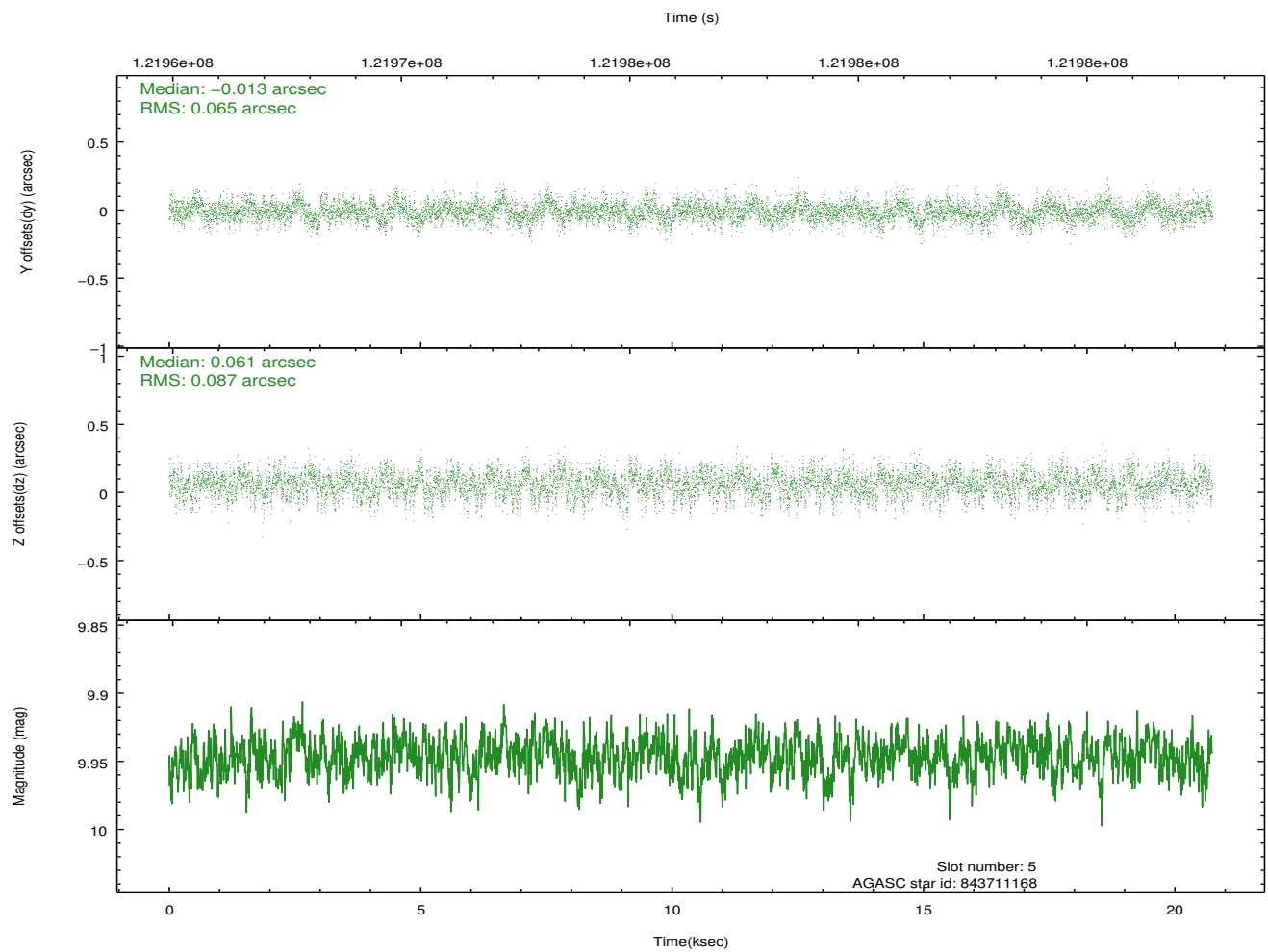
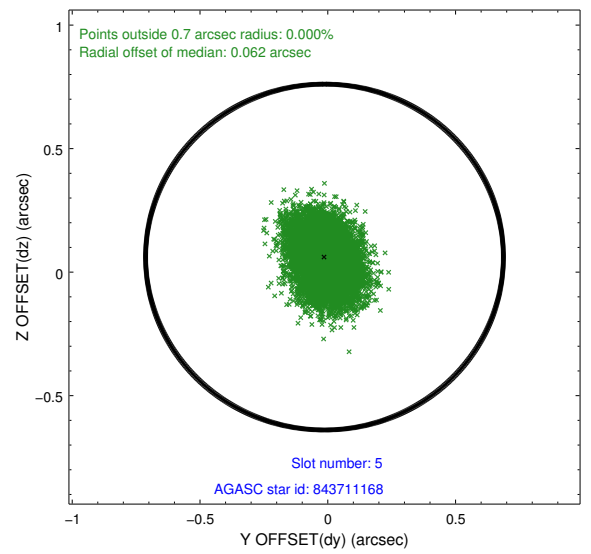
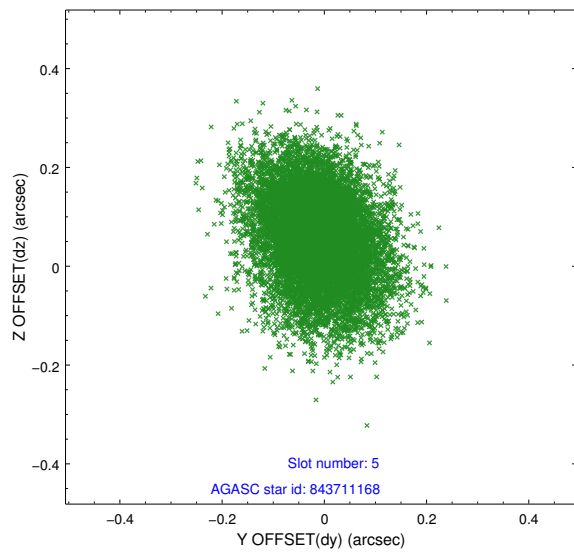
2.4.1 Slot 3



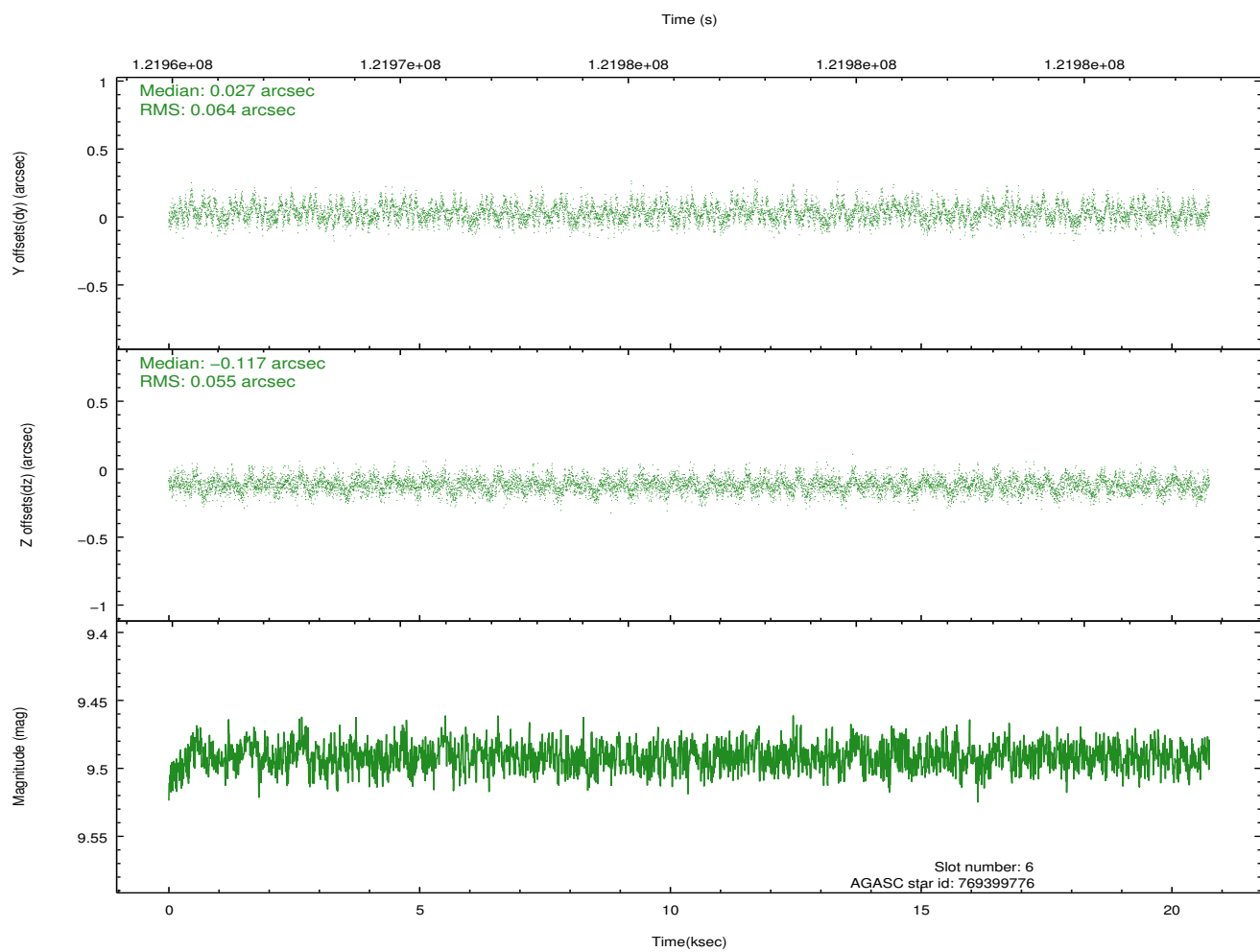
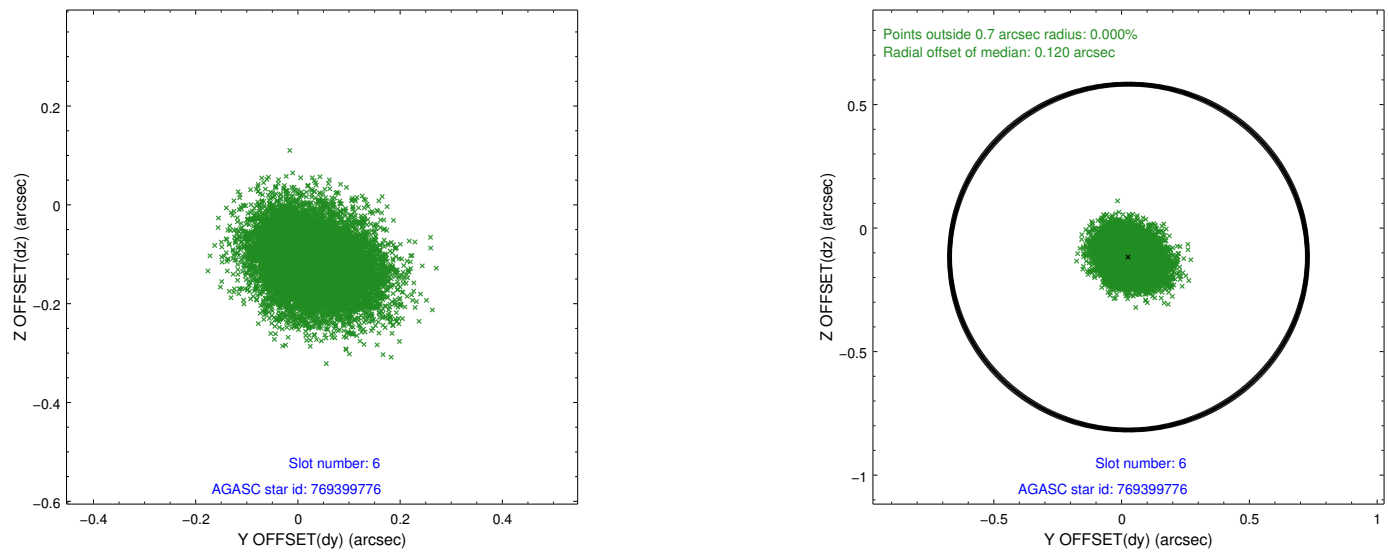
2.4.2 Slot 4



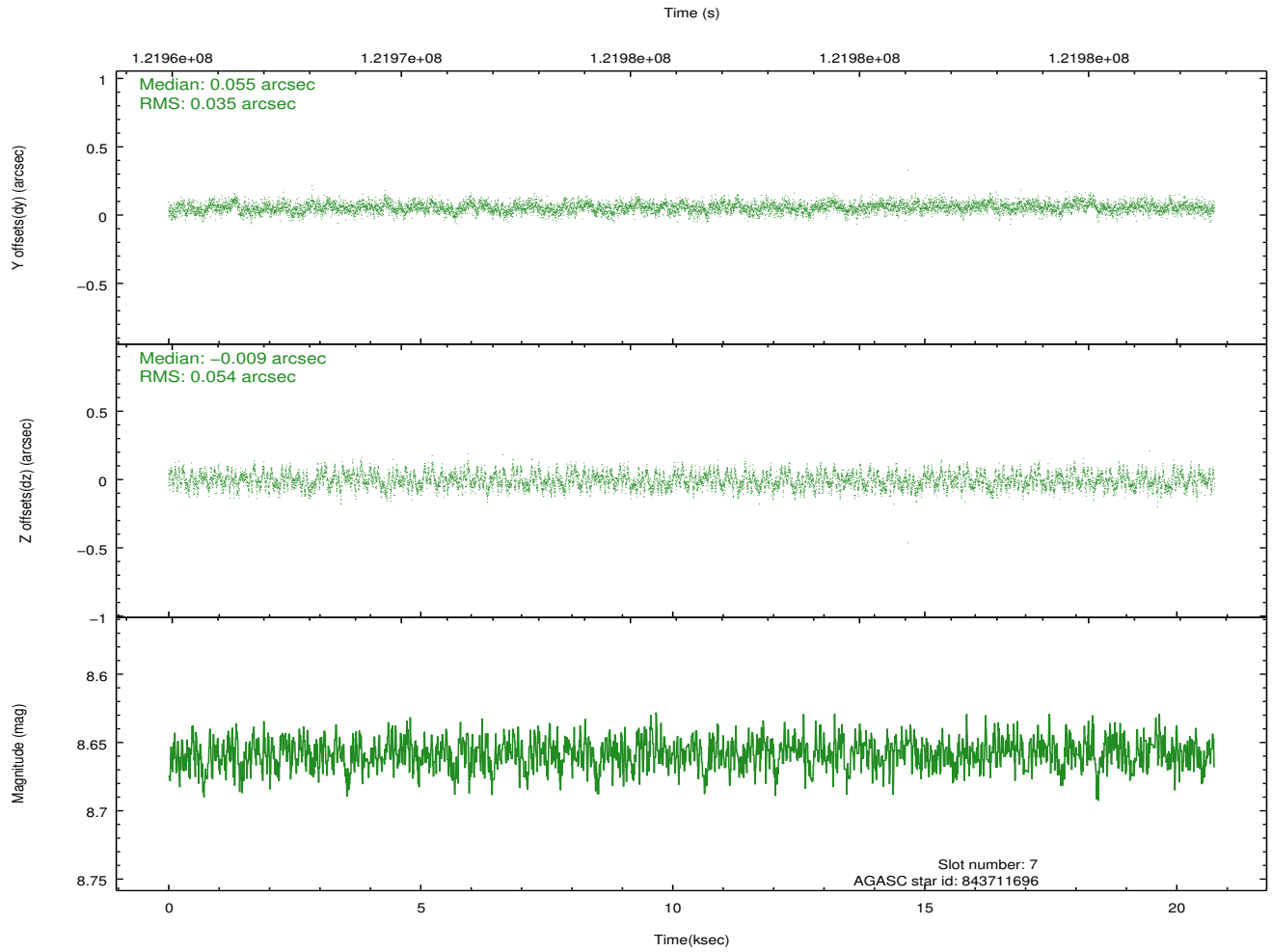
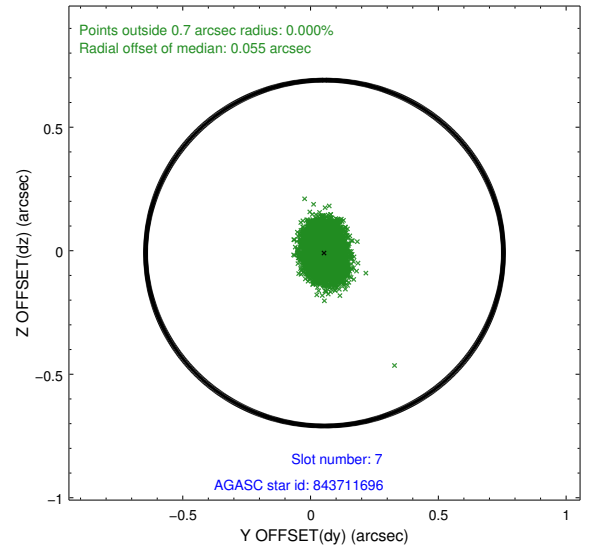
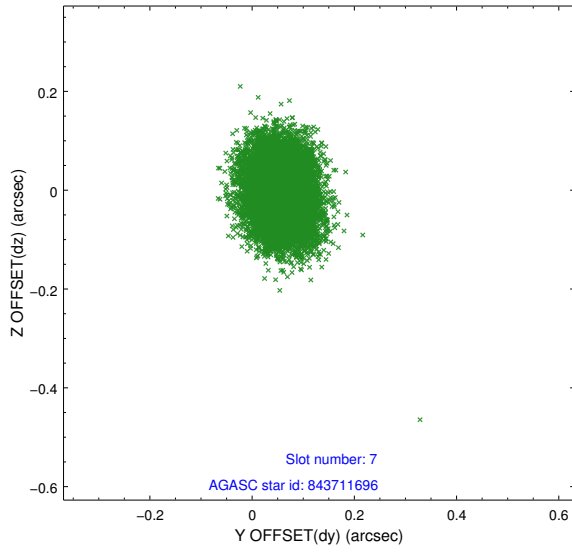
2.4.3 Slot 5



2.4.4 Slot 6

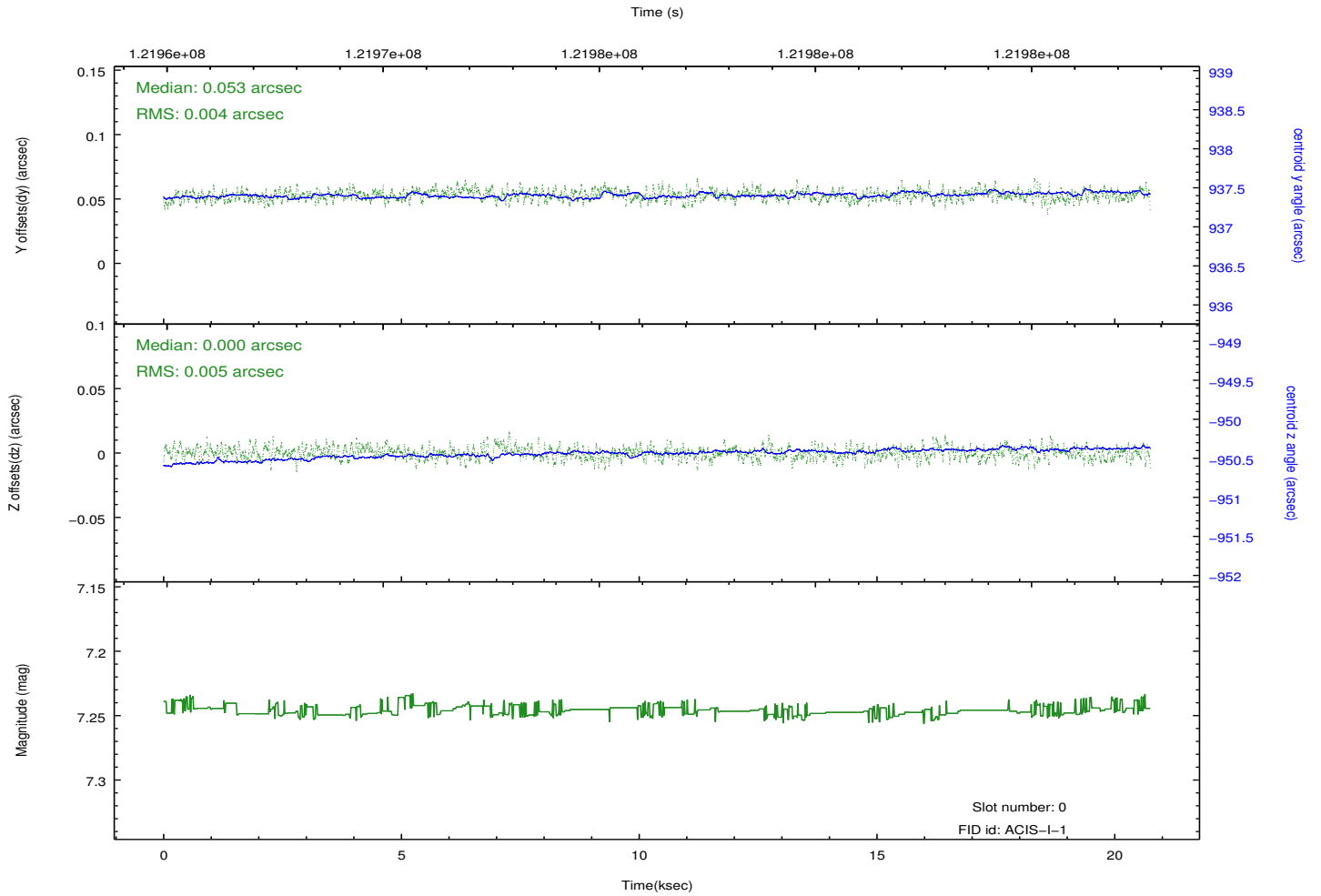
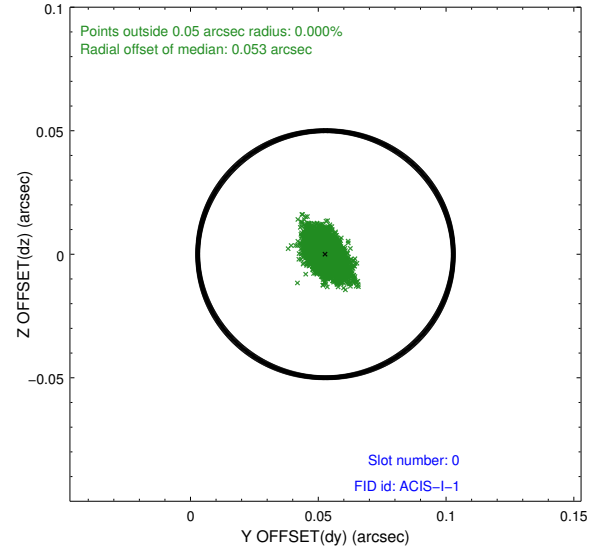
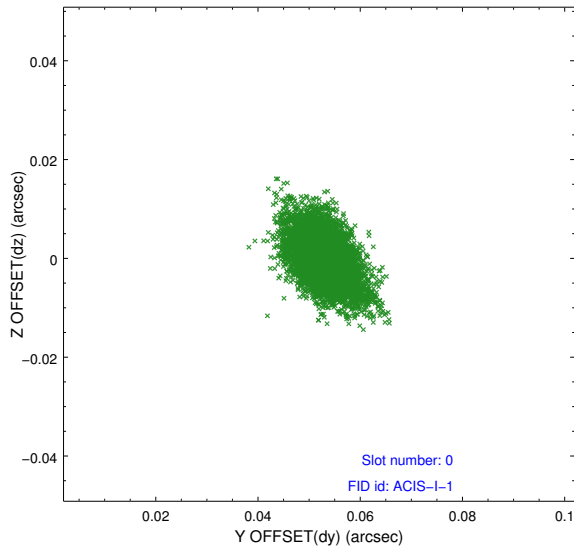


2.4.5 Slot 7

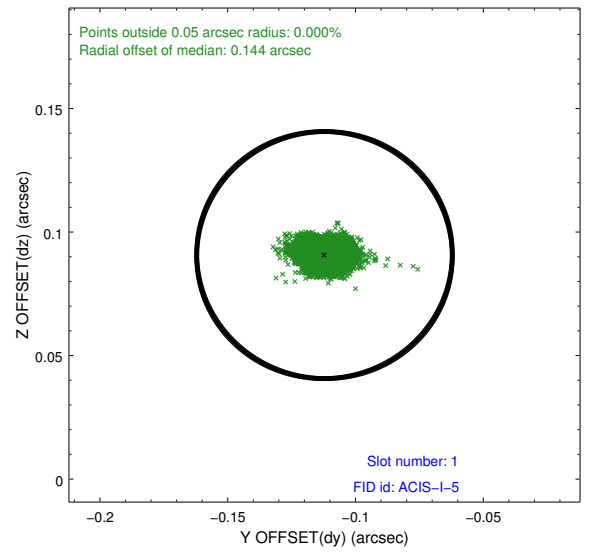
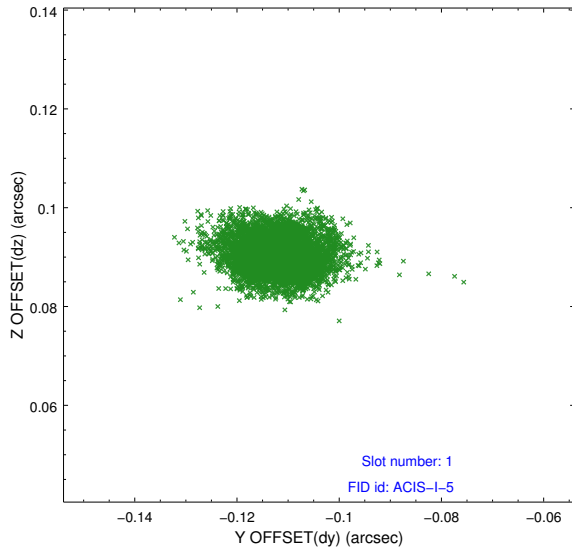


2.5 FID Slots

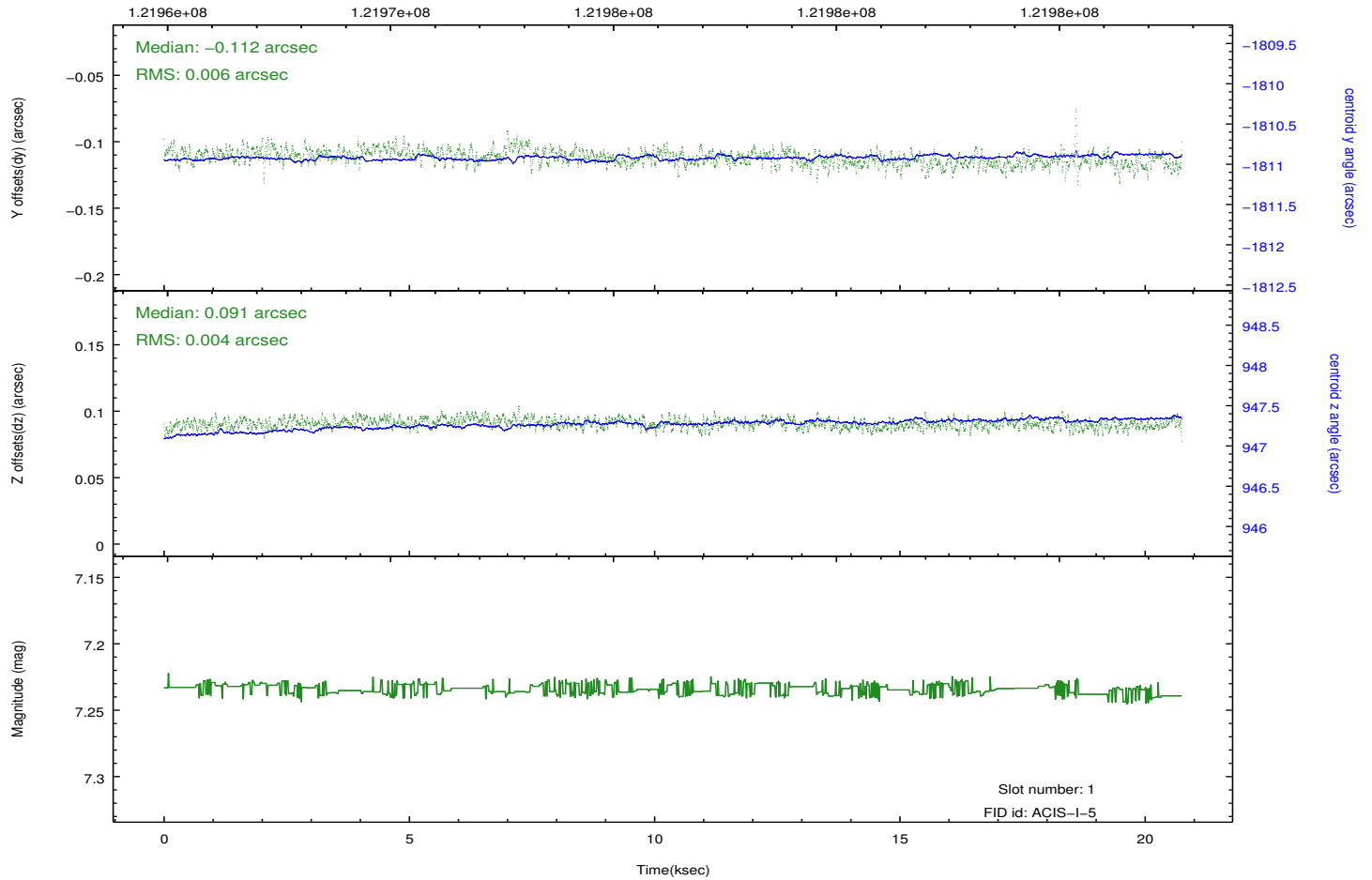
2.5.1 Slot 0



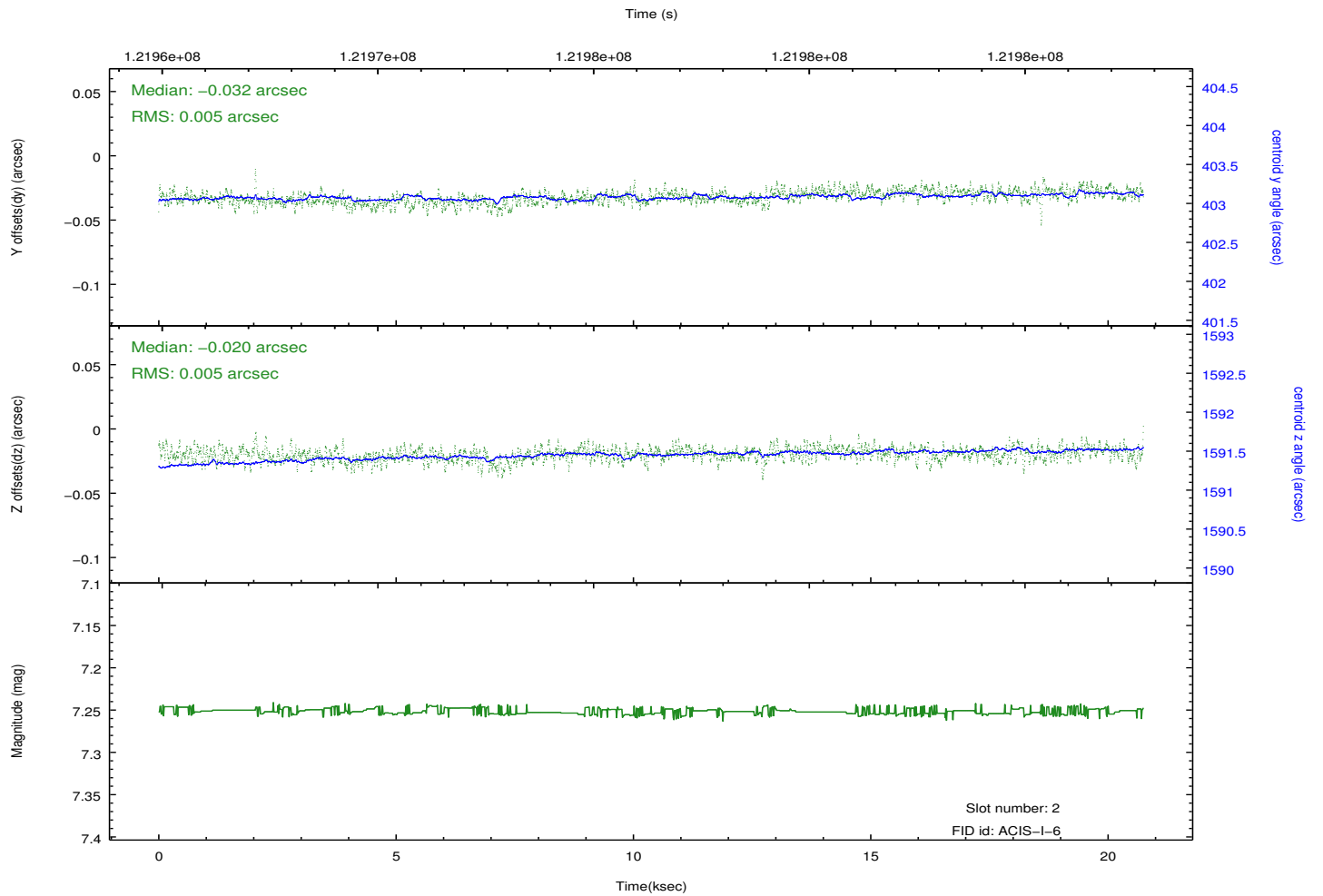
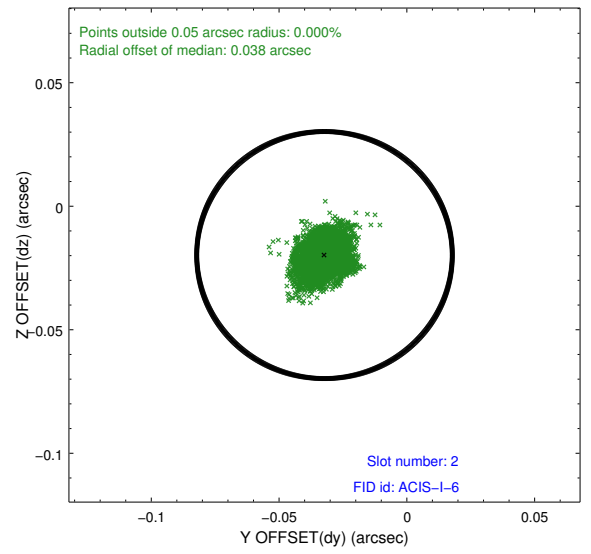
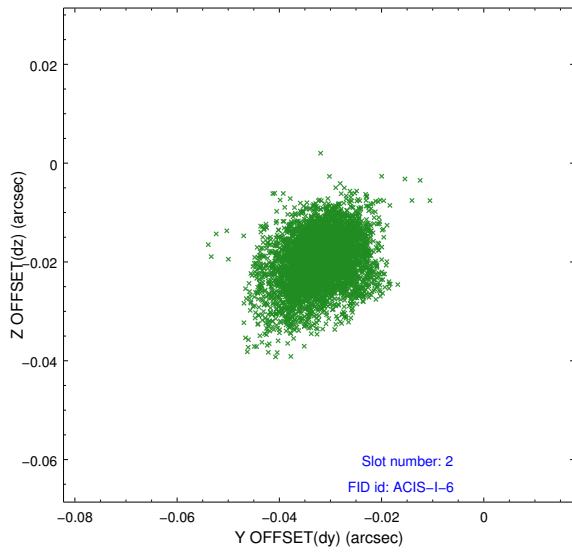
2.5.2 Slot 1



Time (s)



2.5.3 Slot 2



A Summary

A.1 Status

V&V Scientist	Jen Lauer
V&V Date (YYYY-MM-DD)	2012.09.27
V&V Edition	1
V&V Disposition and Status	OK
V&V Charge Time	20.738

A.2 Comments