

V&V Reference Report

L2 ASCDS Version : 8.4.5

Observation 3347 - L2 Version 3
Chandra X-Ray Center

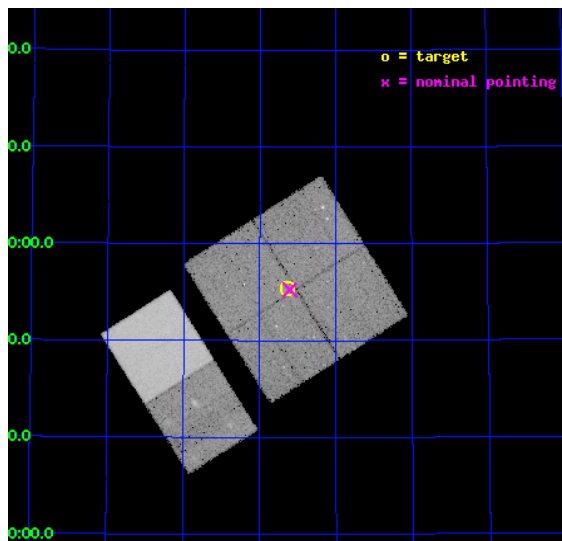
L2 Processing Date : Oct 7 2012

Contents

1	Front	2
2	OBI	3
2.1	OBI	3
2.1.1	Images	3
2.1.2	Bias	3
2.1.3	Parameters	4
2.1.4	Events	4
2.2	Compared Parameters	5
2.3	Aspect	6
2.4	Star Slots	9
2.4.1	Slot 3	9
2.4.2	Slot 4	10
2.4.3	Slot 5	11
2.4.4	Slot 6	12
2.4.5	Slot 7	13
2.5	FID Slots	14
2.5.1	Slot 0	14
2.5.2	Slot 1	15
2.5.3	Slot 2	16
A	Summary	17
A.1	Status	17
A.2	Comments	17

1 Front

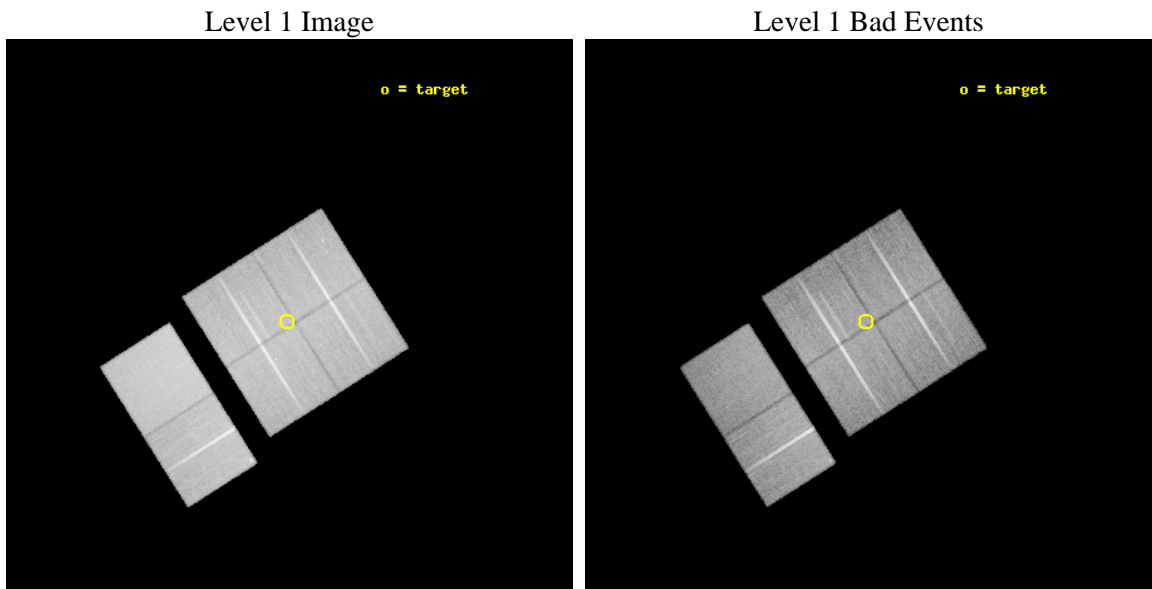
seq_num	900186	Sequence number
obs_id	3347	Observation id
title	WIDE-FIELD CHANDRA SURVEY OF THE LOCKMAN HOLE-NORTHWEST	Proposal t
observer	Prof. Amy Barger	Principal investigator
object	LH-NW-8	Source name
dtcycle	0	
cycle	P	events from which exps? Prim/Second/Both
ra_targ	158.658325	Observer's specified target RA [deg]
dec_targ	57.923611	Observer's specified target Dec [deg]
ra_nom	158.6510636826	Nominal RA [deg]
dec_nom	57.920949020229	Nominal Dec [deg]
roll_nom	237.63923755375	Nominal Roll [deg]
revision	3	Processing version of data
ontime	38953.517904431	Sum of GTIs [s]
livetime	38460.265005732	Livetime [s]
ontime0	38959.999854863	Sum of GTIs [s]
ontime1	38956.758894622	Sum of GTIs [s]
ontime2	38953.517894447	Sum of GTIs [s]
ontime3	38953.517904431	Sum of GTIs [s]
ontime6	38956.758894622	Sum of GTIs [s]
ontime7	38959.999854863	Sum of GTIs [s]
l2events	266065	Number of level 2 events



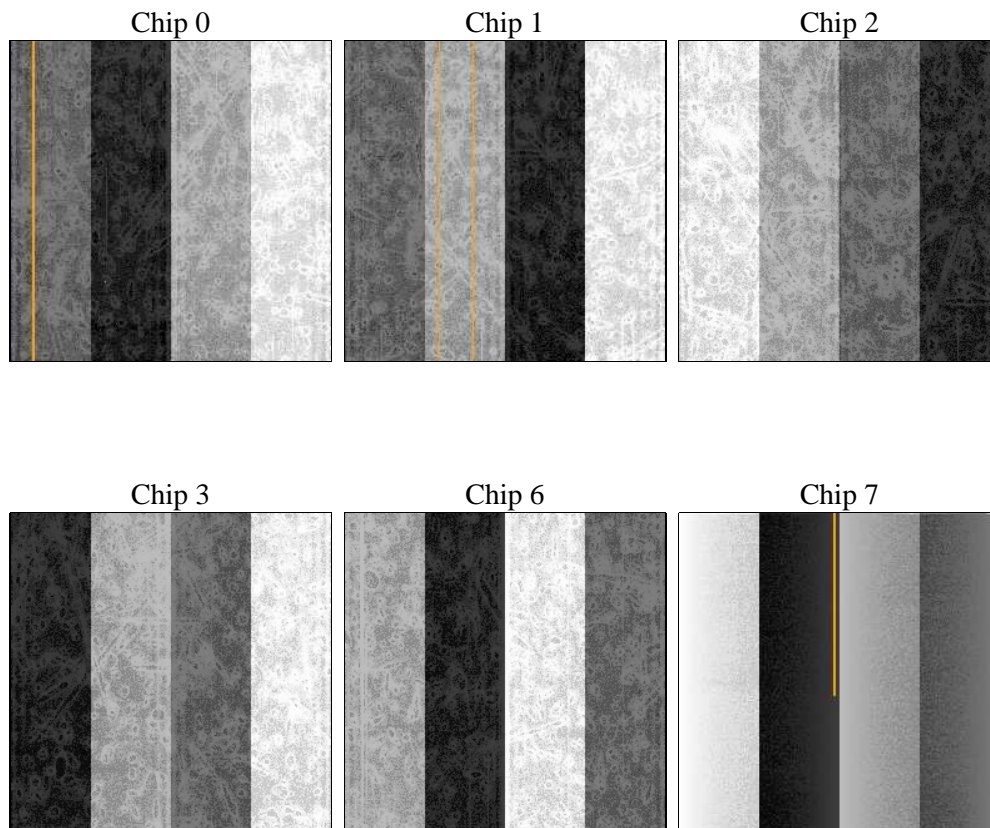
2 OBI

2.1 OBI

2.1.1 Images



2.1.2 Bias



2.1.3 Parameters

obi_num	0	Obi number	sched_exp_time	39000.000000	[s] Scheduled observation exposure time
ascdsver	8.4.5	Processing system revision	ontime	38953.517904431	Sum of GTIs [s]
caldbver	4.5.2	 	ontime0	38959.999854863	Sum of GTIs [s]
date	2012-10-07T09:25:13	Date and time of file creation	ontime1	38956.758894622	Sum of GTIs [s]
revision	3	Processing version of data	ontime2	38953.517894447	Sum of GTIs [s]
			ontime3	38953.517904431	Sum of GTIs [s]
			ontime6	38956.758894622	Sum of GTIs [s]
			ontime7	38959.999854863	Sum of GTIs [s]
			l1events	1586020	Number of level 1 events

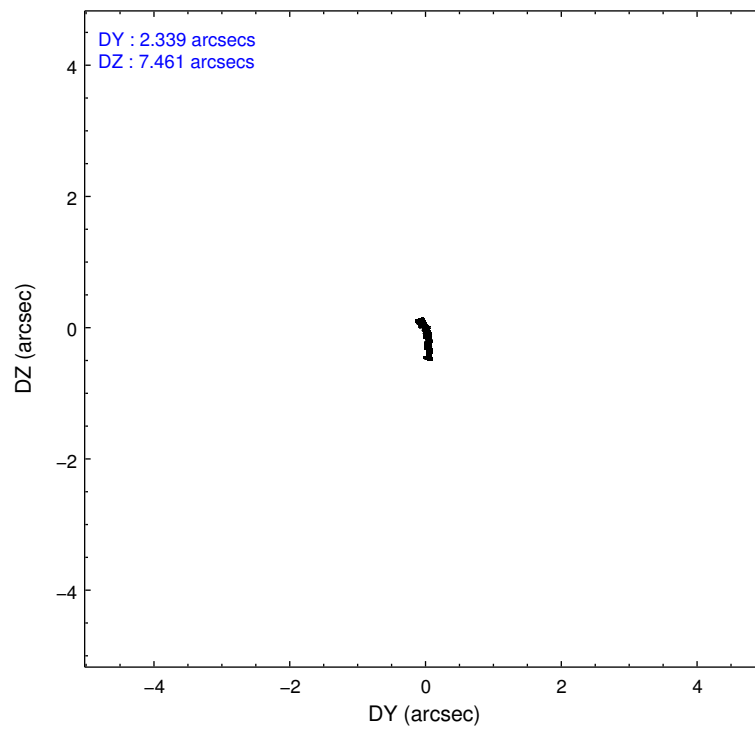
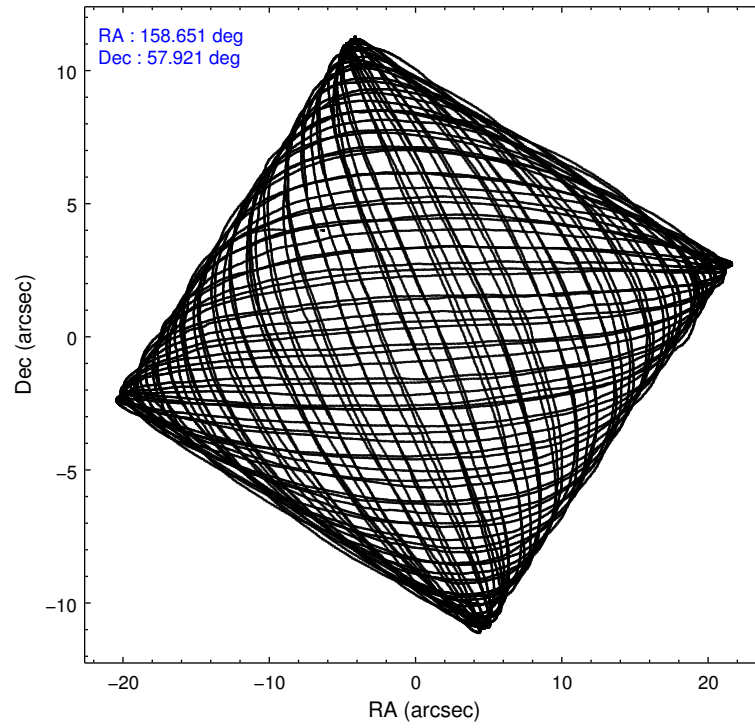
2.1.4 Events

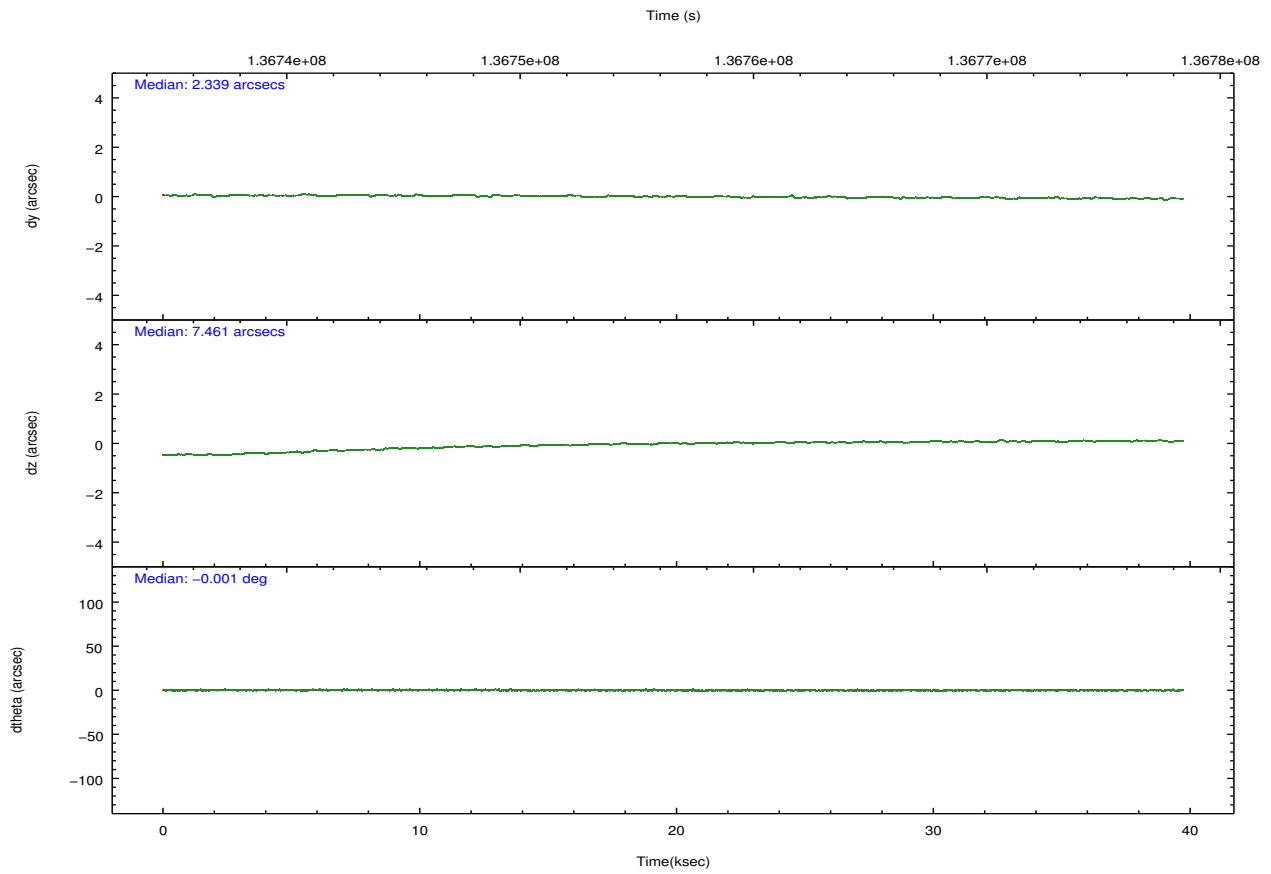
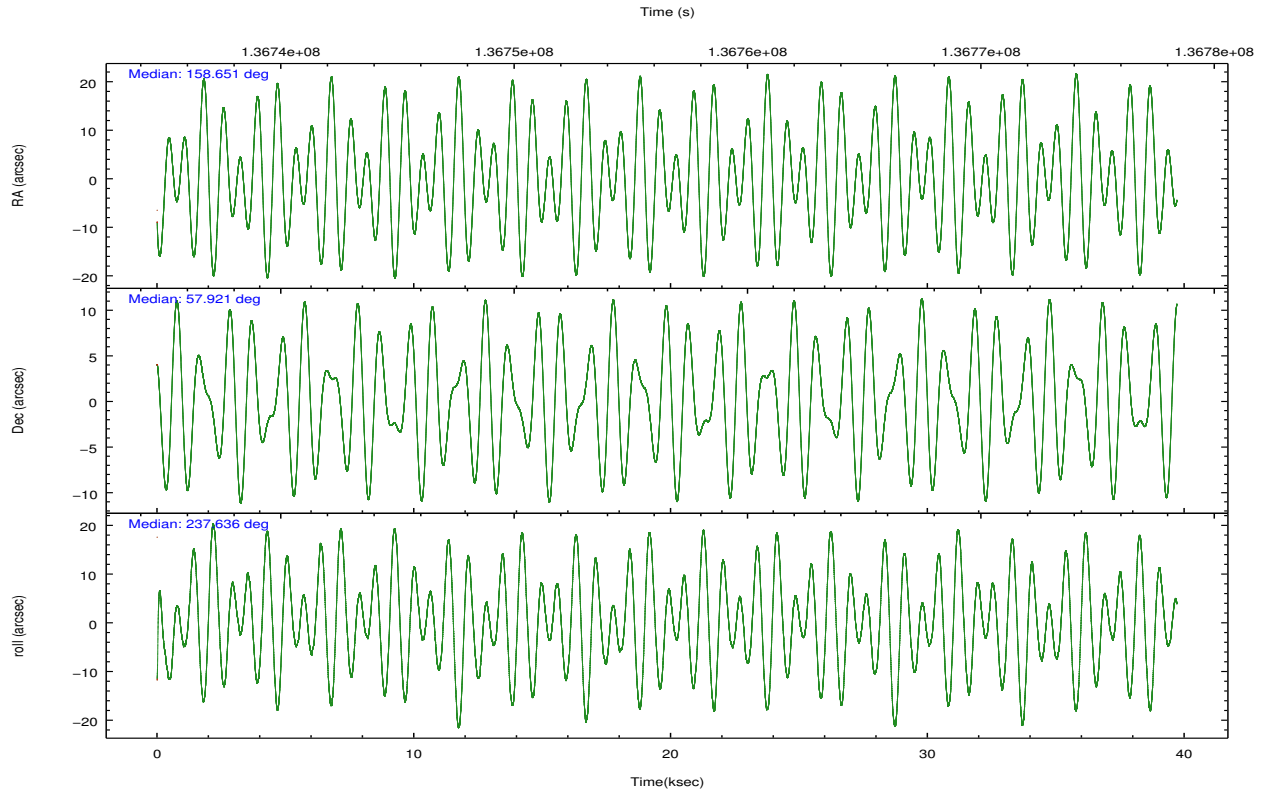
	ccd 0	ccd 1	ccd 2	ccd 3	ccd 6	ccd 7		ccd 0	ccd 1	ccd 2	ccd 3	ccd 6	ccd 7
level 1 events	238261	231670	256847	255250	268563	335429	grade 0 events	12505	12574	13231	12624	13220	12804
rejected events	207998	200124	226555	225587	237145	196886		5%	5%	5%	4%	4%	3%
rejected %	87%	86%	88%	88%	88%	58%	grade 1 events	130	125	98	143	181	301
								0%	0%	0%	0%	0%	0%
							grade 2 events	6605	6635	6455	6060	6253	27543
								2%	2%	2%	2%	2%	8%
							grade 3 events	3069	3175	2774	2874	2959	12304
								1%	1%	1%	1%	1%	3%
							grade 4 events	2765	3135	2704	2762	2958	12354
								1%	1%	1%	1%	1%	3%
							grade 5 events	9499	10060	9257	10458	11506	32480
								3%	4%	3%	4%	4%	9%
							grade 6 events	5325	6032	5135	5351	6032	73559
								2%	2%	1%	2%	2%	21%
							grade 7 events	198363	189934	217193	214978	225454	164084
								83%	81%	84%	84%	83%	48%

2.2 Compared Parameters

Parameter	Planned	Actual	Parameter	Planned	Actual
Instrument	ACIS	ACIS	Obspar format version number	7	7
Detector	ACIS-012367	ACIS-012367	Obspar file type	PREDICTED	ACTUAL
Grating	NONE	NONE	Obspar update status	NONE	UPDATED
Data mode	VFAINT	VFAINT	Number of optional ACIS chips dropped	0	0
Observation mode	POINTING	POINTING	On-chip summing requested	N	N
[deg] Pointing RA	158.653051	158.6510636826033	Subarray requested	NONE	NONE
[deg] Pointing Dec	57.948333	57.92094902022913	Alternating exposures requested	N	N
[deg] Pointing Roll	237.428873	237.6392375537459	[s] Primary exposure time	0.000000	3.2
[mm] SIM focus pos	-0.782348	-0.7809083437167272			
[mm] SIM defocus	0	0.001439871863259334			
[mm] SIM translation stage pos	-233.592463	-233.5874344608287			
[mm] SIM translation stage offset	0	-0.005018542100998502			
[s] Observation start time (MET)	136737408.184000	136736187.27427			
Observation start date	2002-05-02T14:35:44	2002-05-02T14:16:27			
[s] Observation end time (MET)	136776408.184000	136776941.27593			
Observation end date	2002-05-03T01:25:44	2002-05-03T01:35:41			
Read mode	TIMED	TIMED			

2.3 Aspect



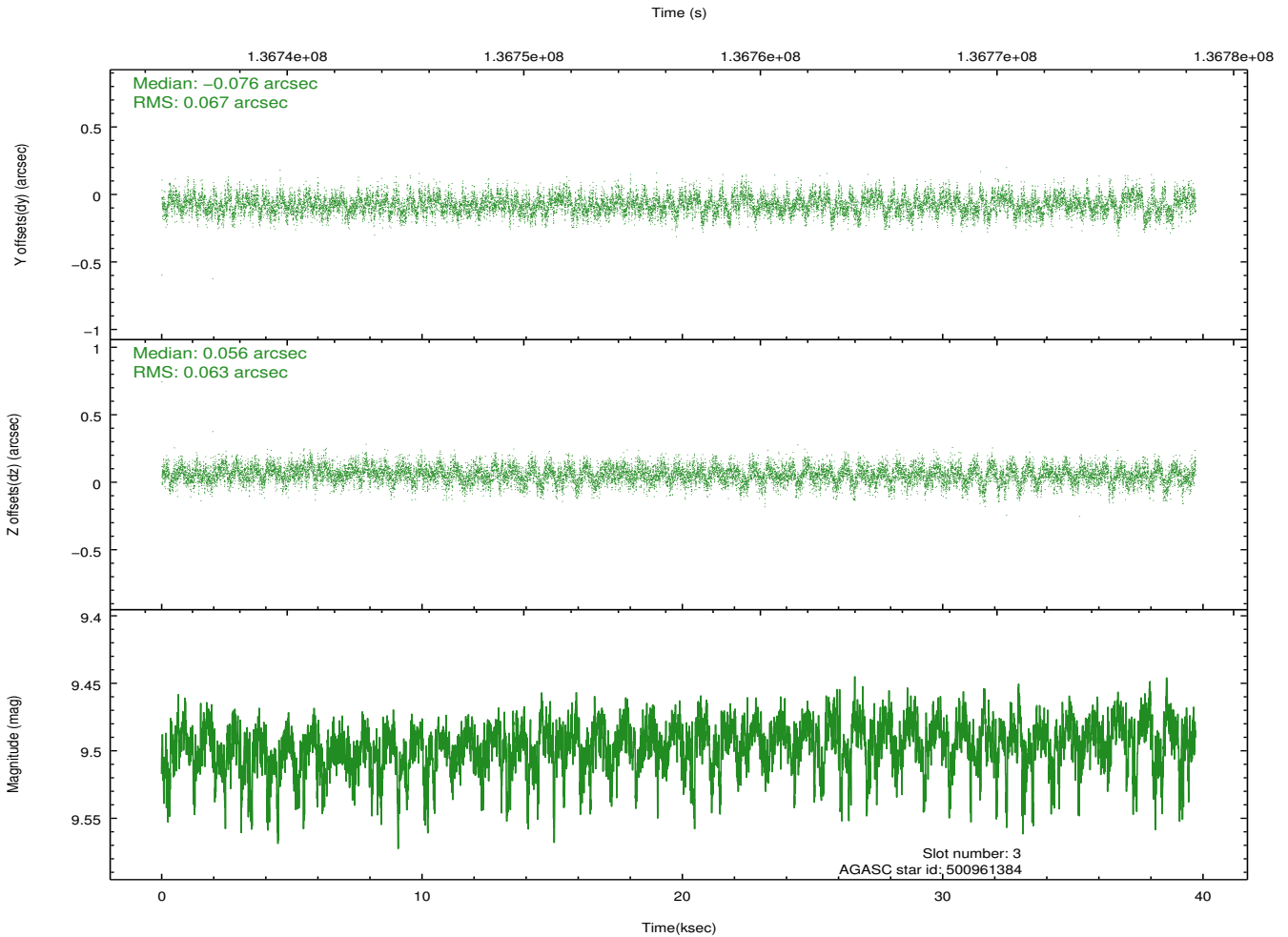
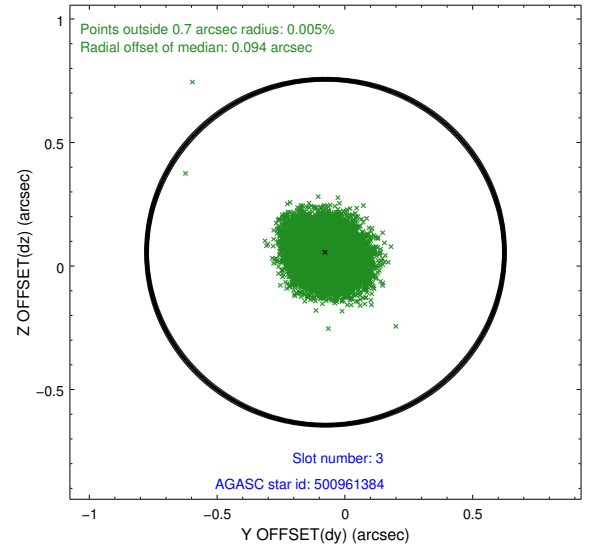
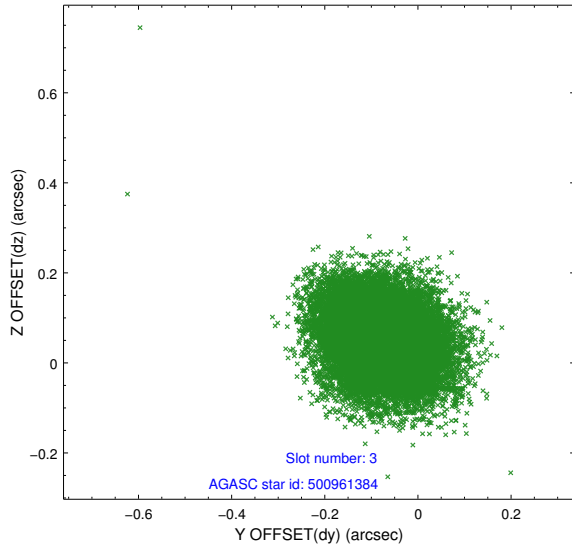


Slot Statistics

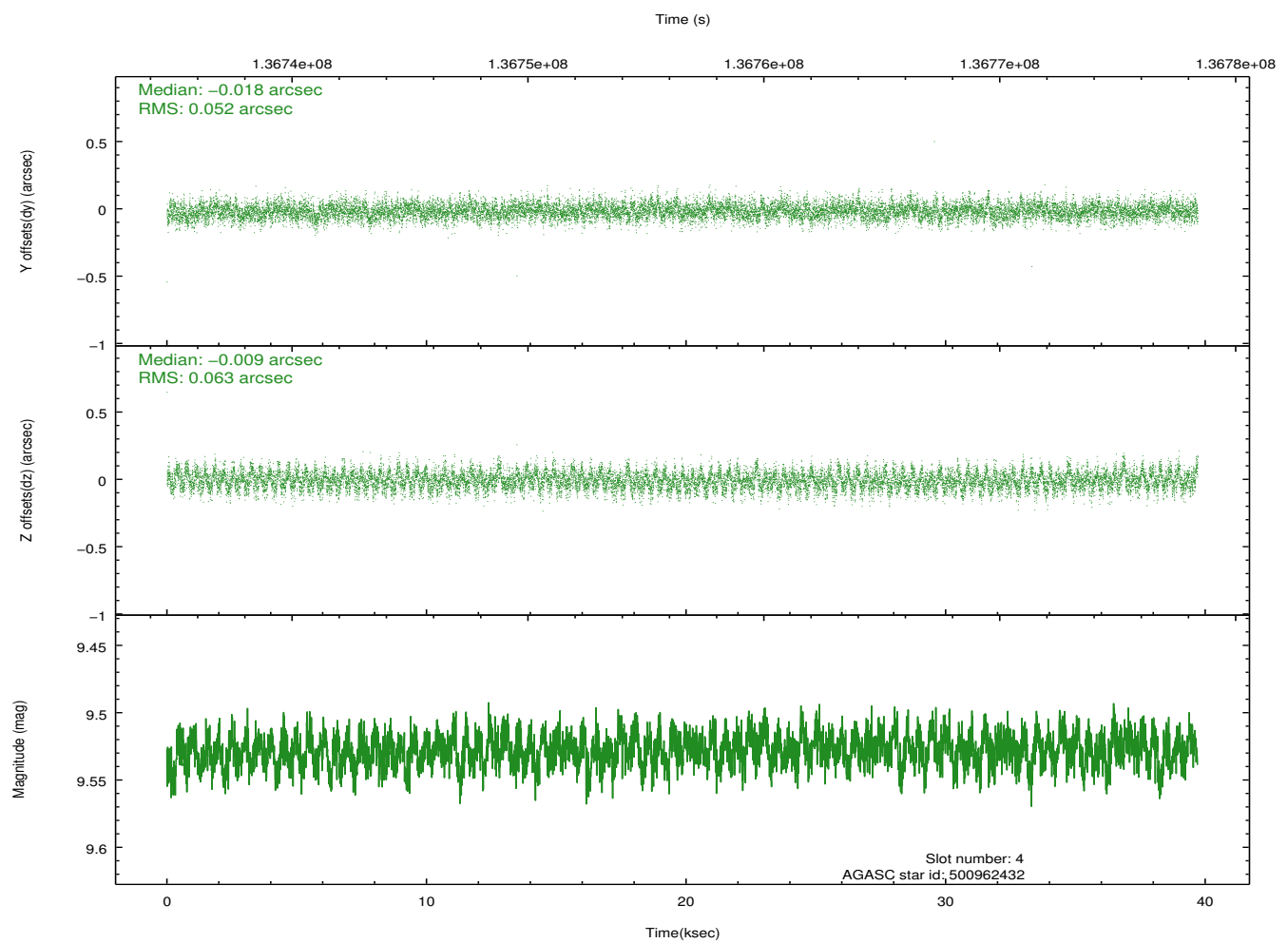
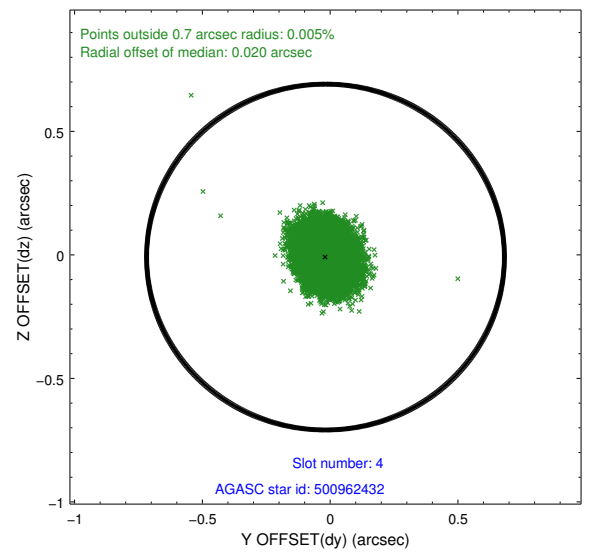
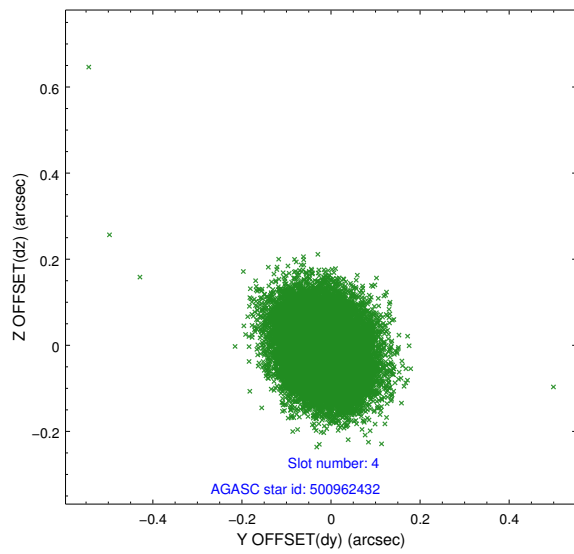
slot	status	id	mag	n_pts	med_dy	med_dz	dr1	dr2	ra	dec	mean_y	mean_z
0	FID	ACIS-I-1	7.25	9687	-0.007	0.035	0.010	0.018	0.000000	0.000000	937.45	-830.77
1	FID	ACIS-I-5	7.24	9687	-0.046	0.049	0.006	0.011	0.000000	0.000000	-1810.65	1066.78
2	FID	ACIS-I-6	7.26	9684	-0.038	-0.014	0.009	0.017	0.000000	0.000000	402.99	1711.20
3	GUIDE	500961384	9.50	19340	-0.076	0.056	0.098	0.160	159.416101	58.123584	-1319.88	878.40
4	GUIDE	500962432	9.53	19356	-0.018	-0.009	0.087	0.141	158.977500	58.020820	-554.51	380.06
5	GUIDE	500568656	8.48	19370	0.072	0.041	0.079	0.119	159.217900	57.306375	1352.22	2167.49
6	GUIDE	500959408	9.52	19357	0.064	-0.084	0.102	0.171	157.361573	57.862425	1572.10	-1930.20
7	GUIDE	500965000	8.92	19358	-0.040	-0.007	0.088	0.140	159.614449	57.527596	264.57	2374.18

2.4 Star Slots

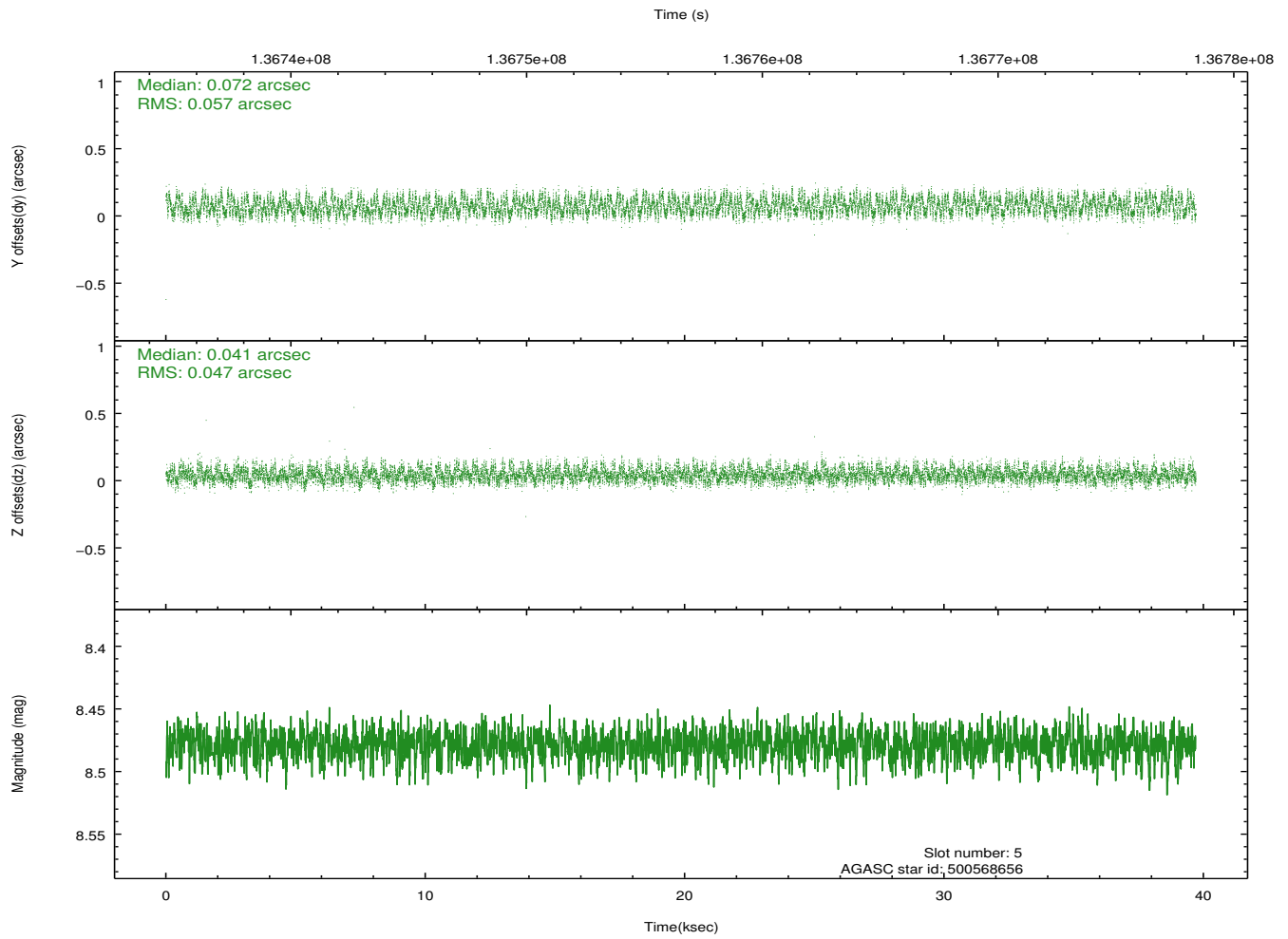
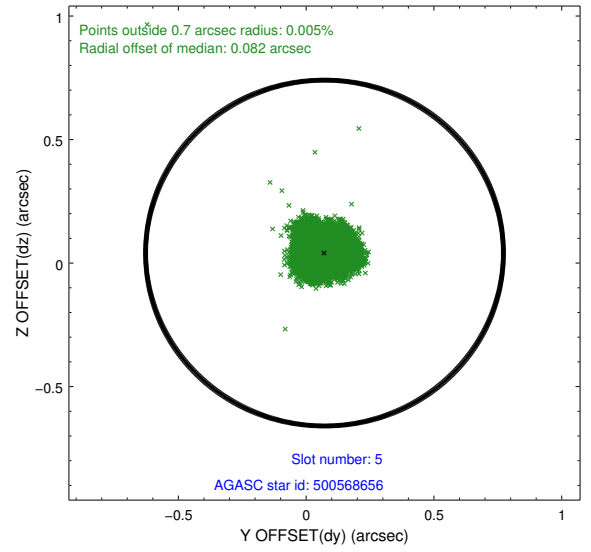
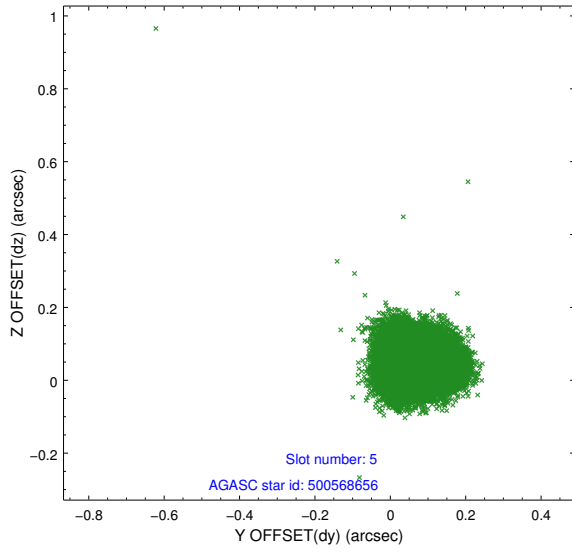
2.4.1 Slot 3



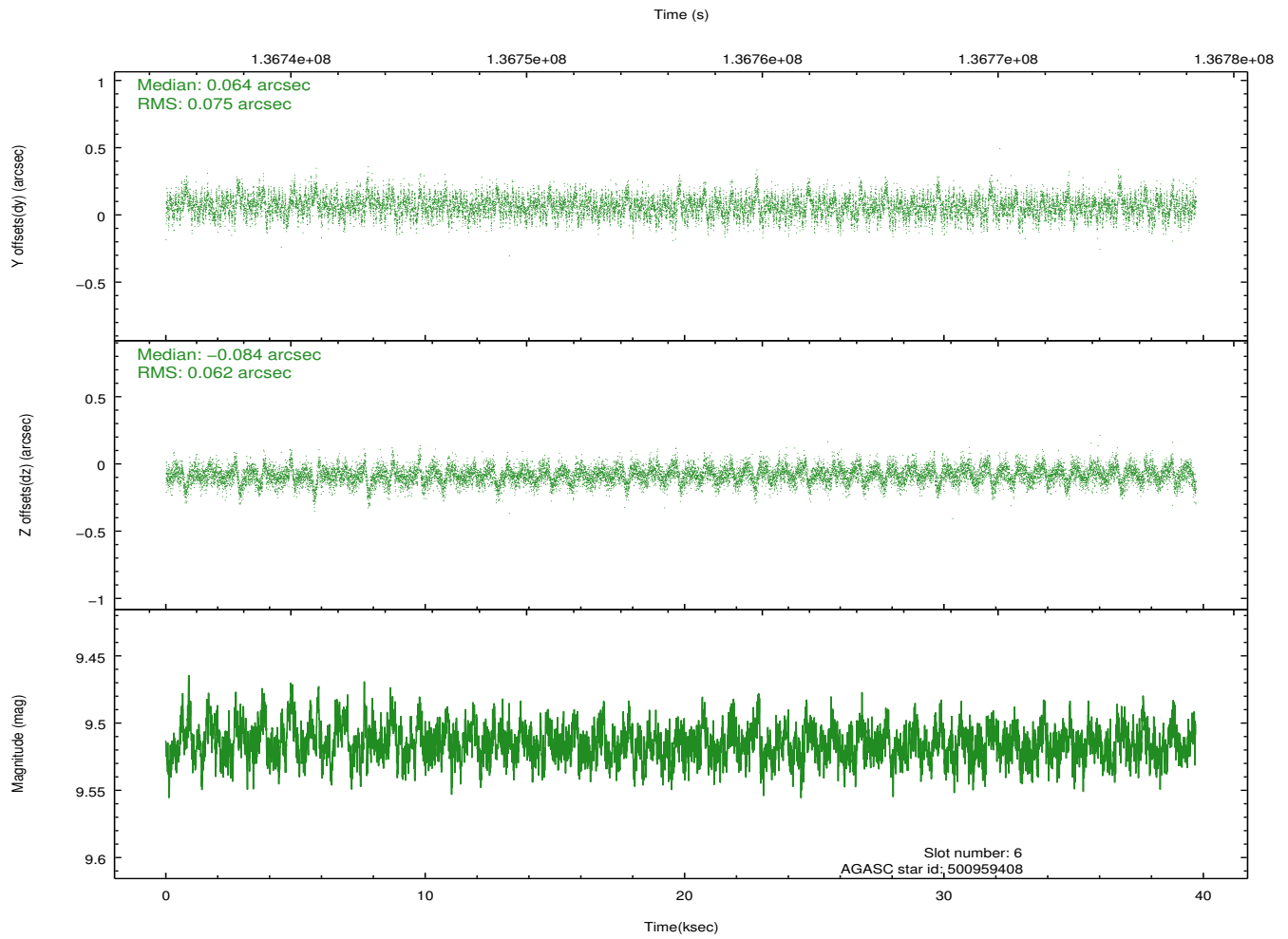
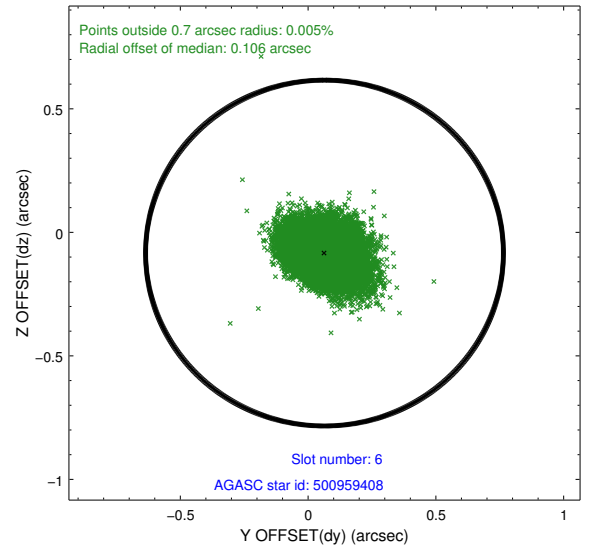
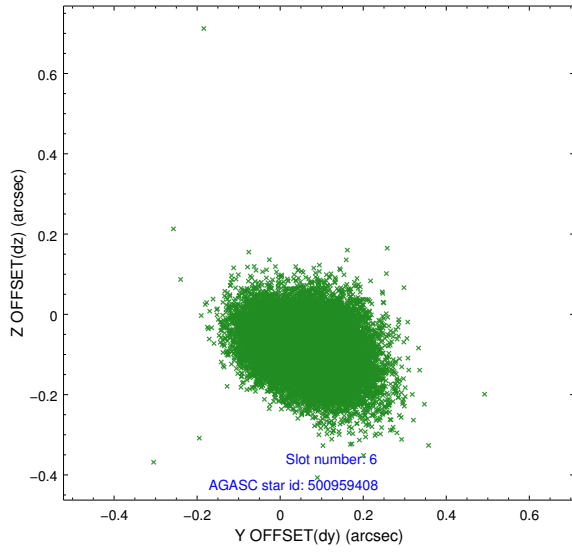
2.4.2 Slot 4



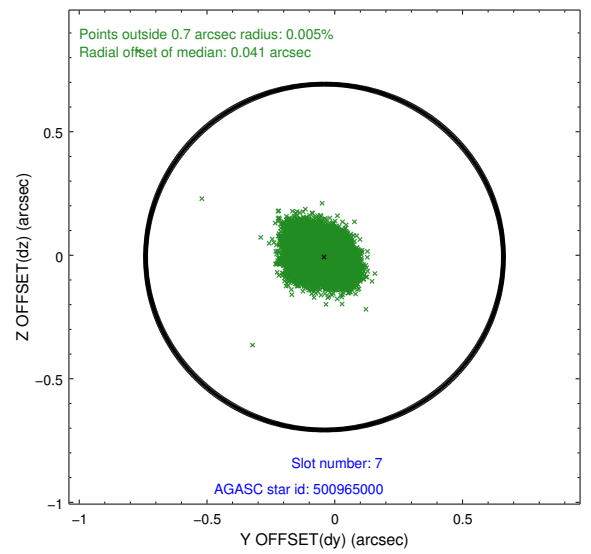
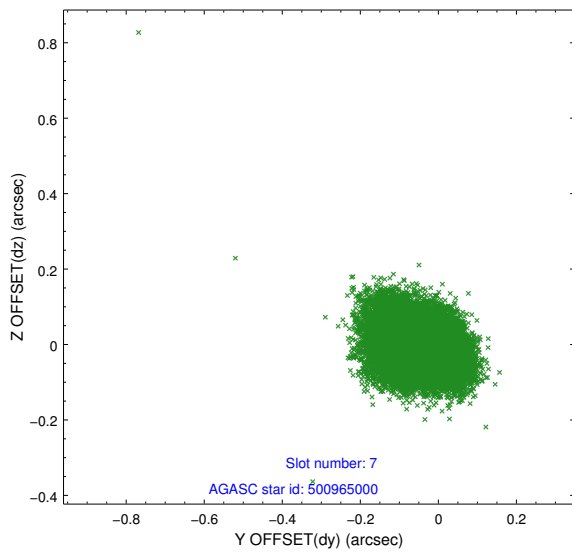
2.4.3 Slot 5



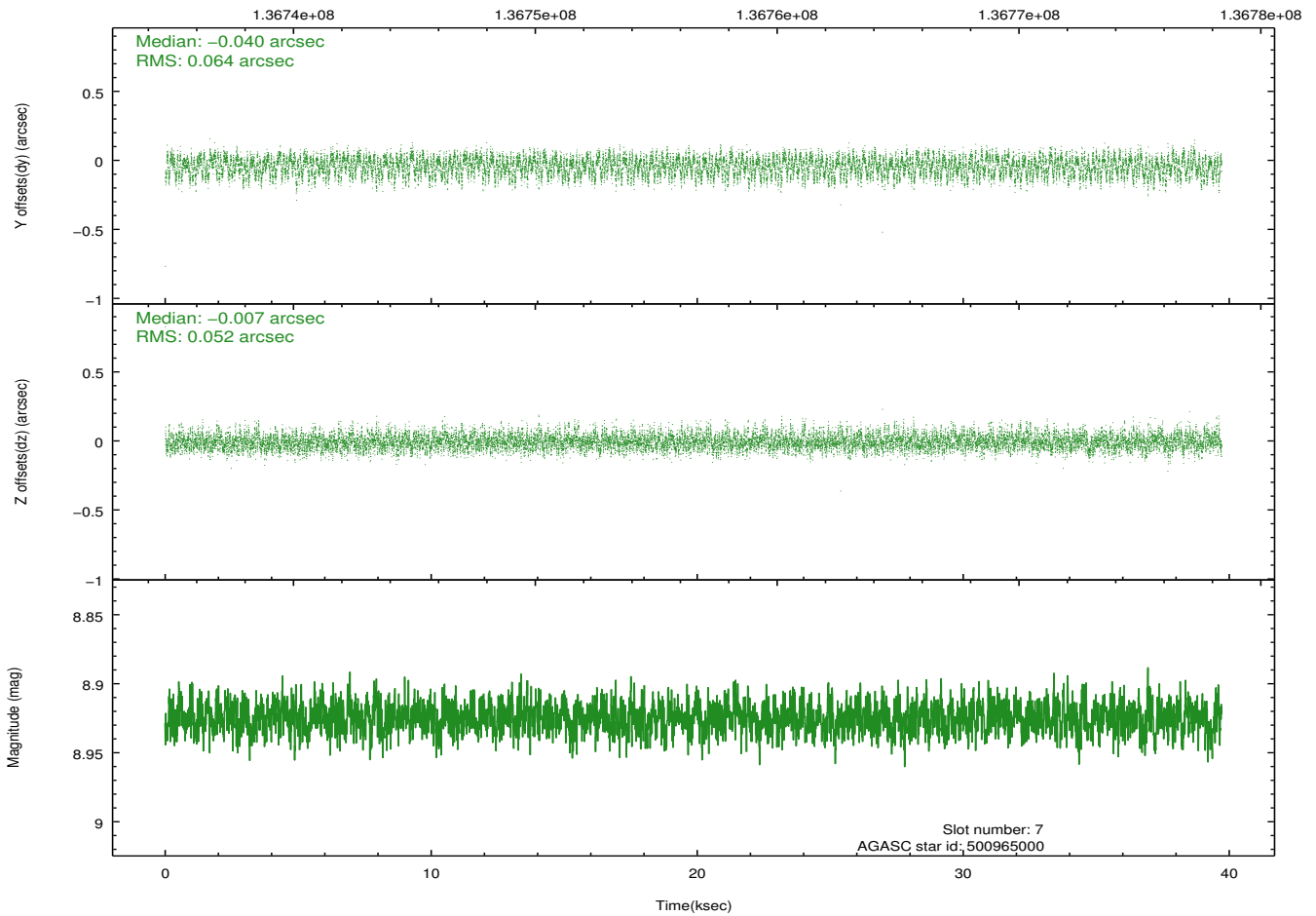
2.4.4 Slot 6



2.4.5 Slot 7

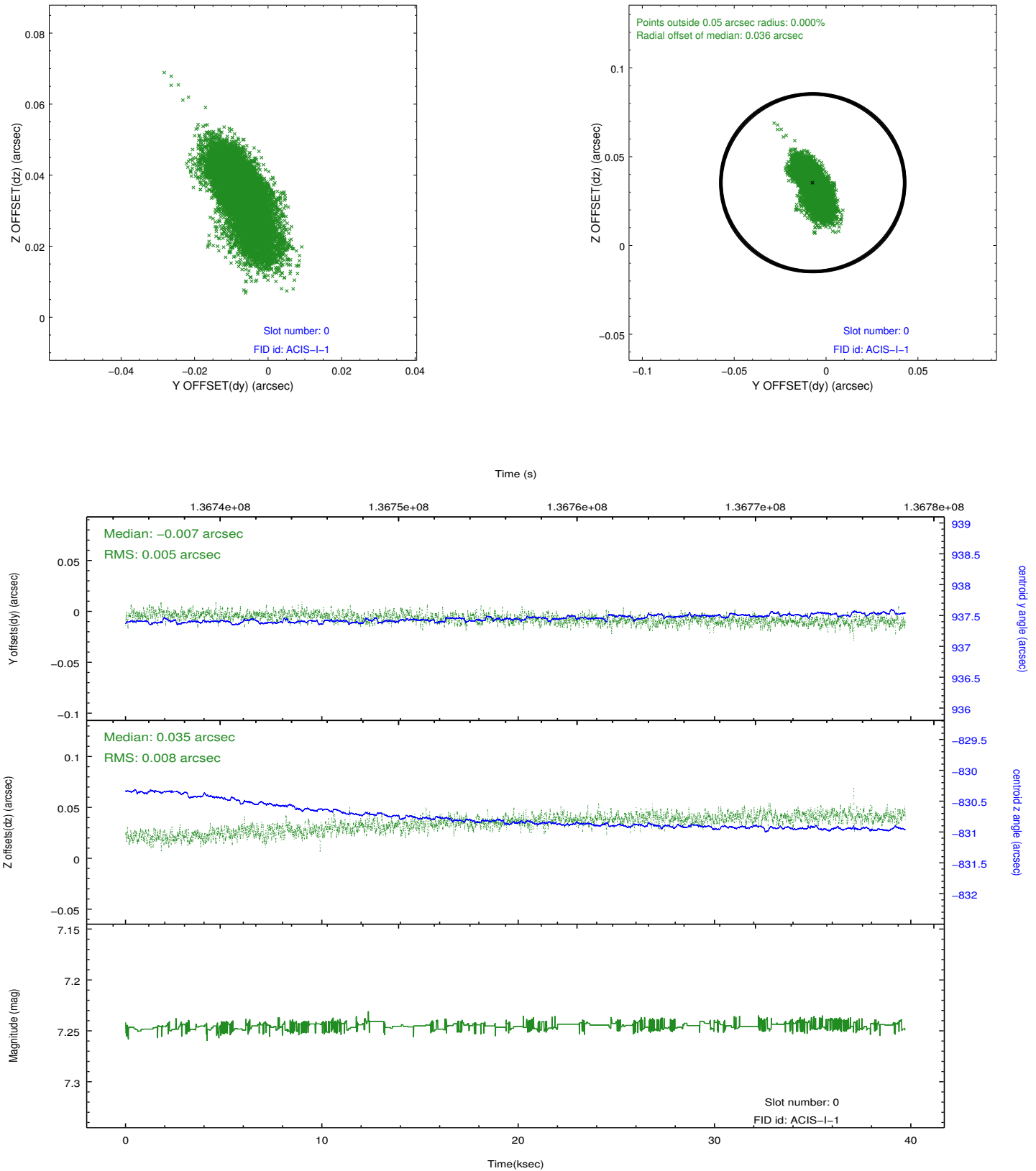


Time (s)

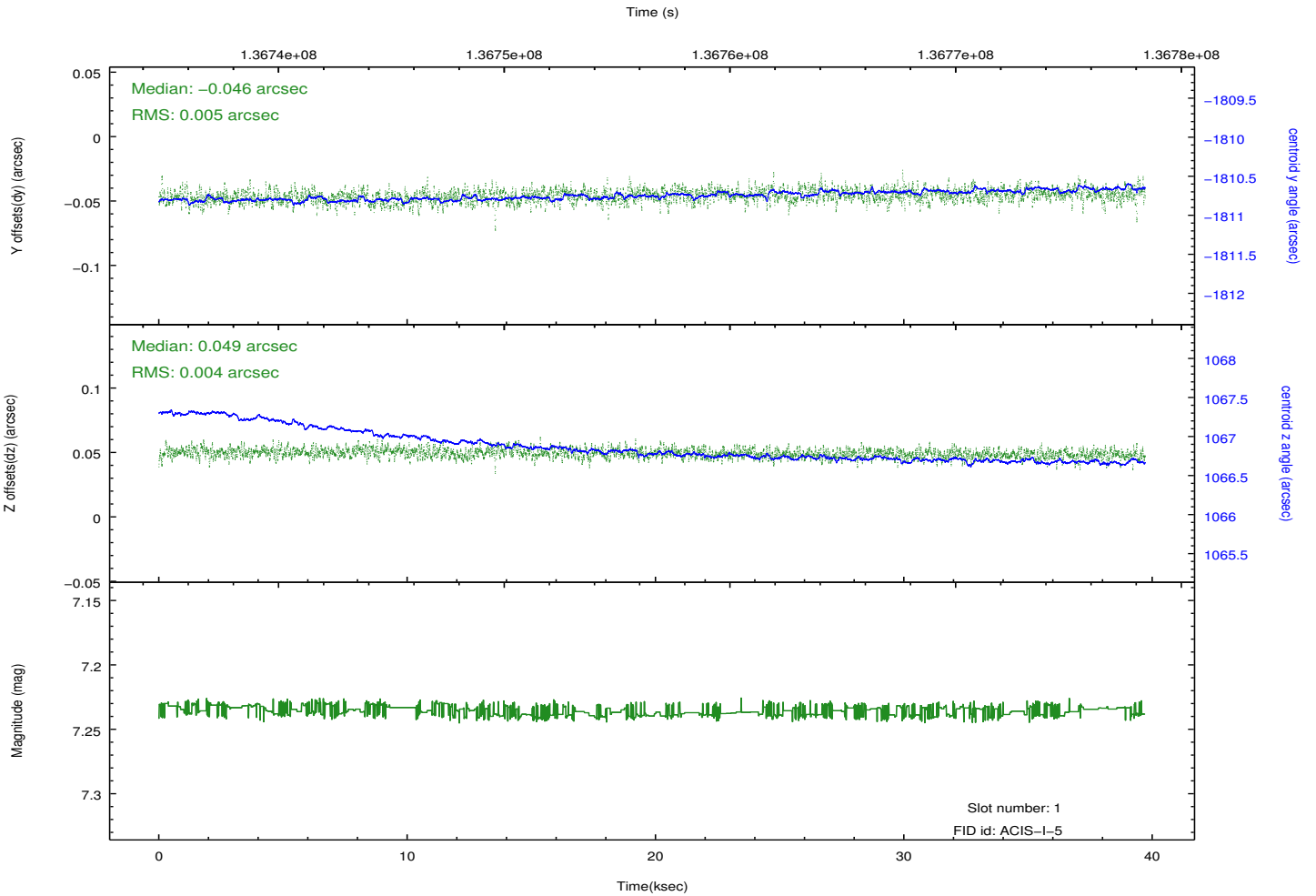
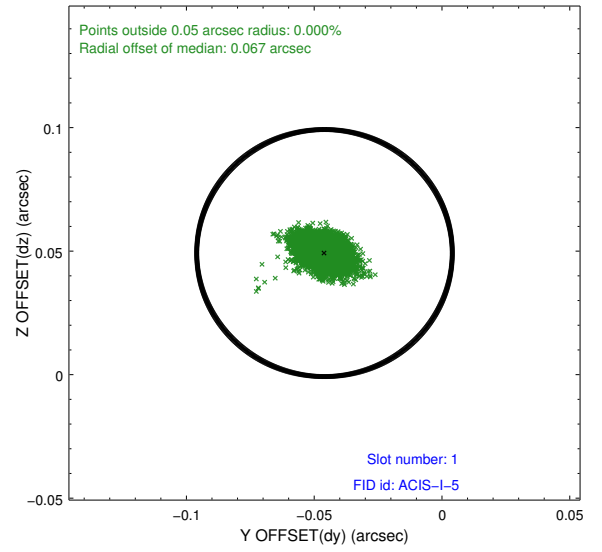
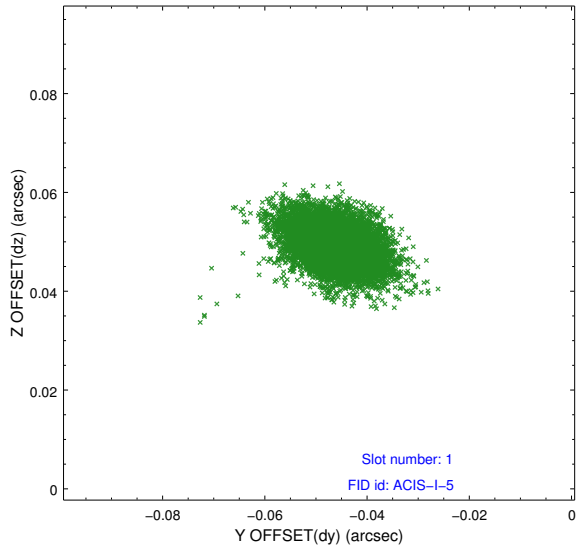


2.5 FID Slots

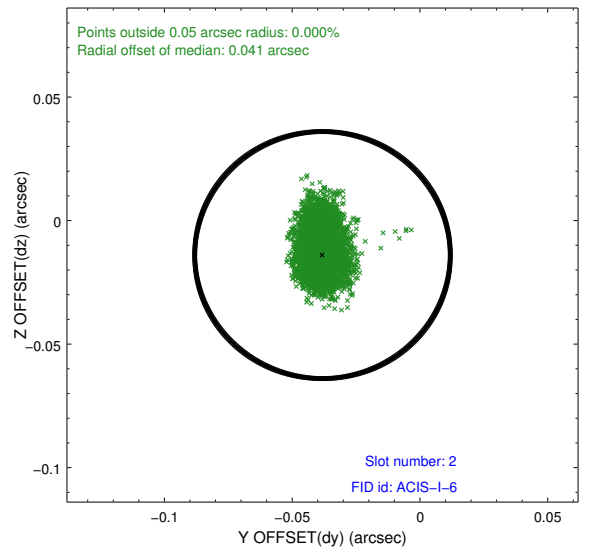
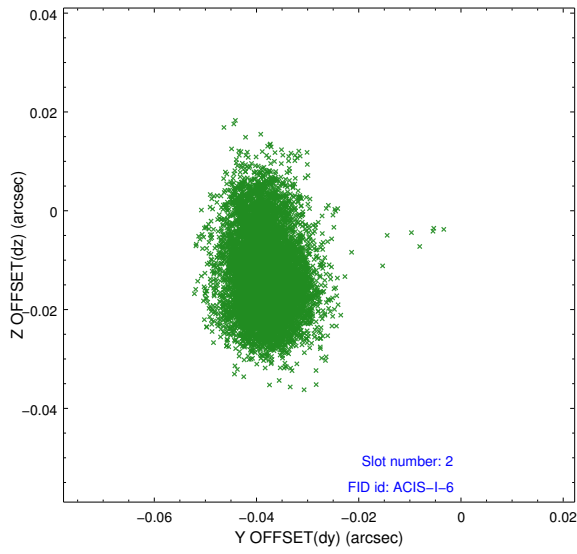
2.5.1 Slot 0



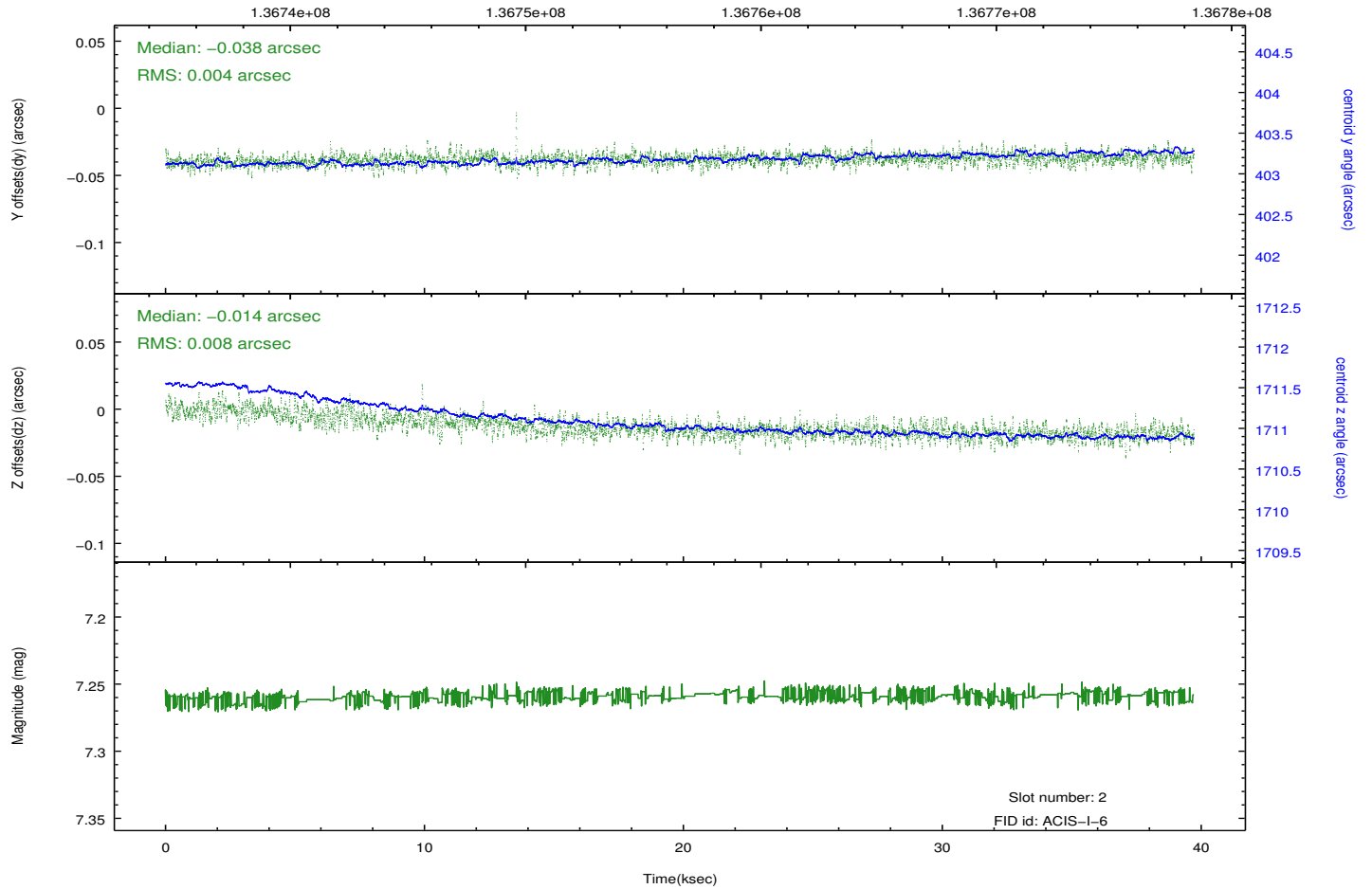
2.5.2 Slot 1



2.5.3 Slot 2



Time (s)



A Summary

A.1 Status

V&V Scientist	Beth Sundheim
V&V Date (YYYY-MM-DD)	2012.10.16
V&V Edition	1
V&V Disposition and Status	OK
V&V Charge Time	38.956

A.2 Comments