

V&V Reference Report

L2 ASCDS Version : 8.4.5

Observation 3487 - L2 Version 3
Chandra X-Ray Center

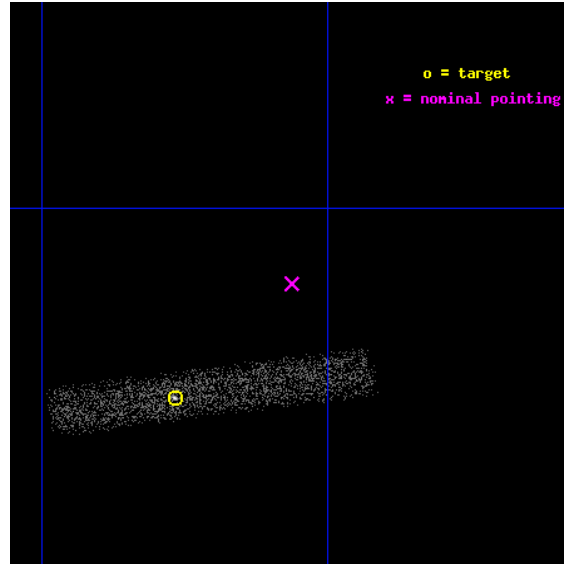
L2 Processing Date : Oct 10 2012

Contents

1	Front	2
2	OBI	3
2.1	OBI	3
2.1.1	Images	3
2.1.2	Bias	3
2.1.3	Parameters	4
2.1.4	Events	4
2.2	Compared Parameters	5
2.3	Aspect	6
2.4	Star Slots	9
2.4.1	Slot 3	9
2.4.2	Slot 4	10
2.4.3	Slot 5	11
2.4.4	Slot 6	12
2.4.5	Slot 7	13
2.5	FID Slots	14
2.5.1	Slot 0	14
2.5.2	Slot 1	15
2.5.3	Slot 2	16
A	Summary	17
A.1	Status	17
A.2	Comments	17

1 Front

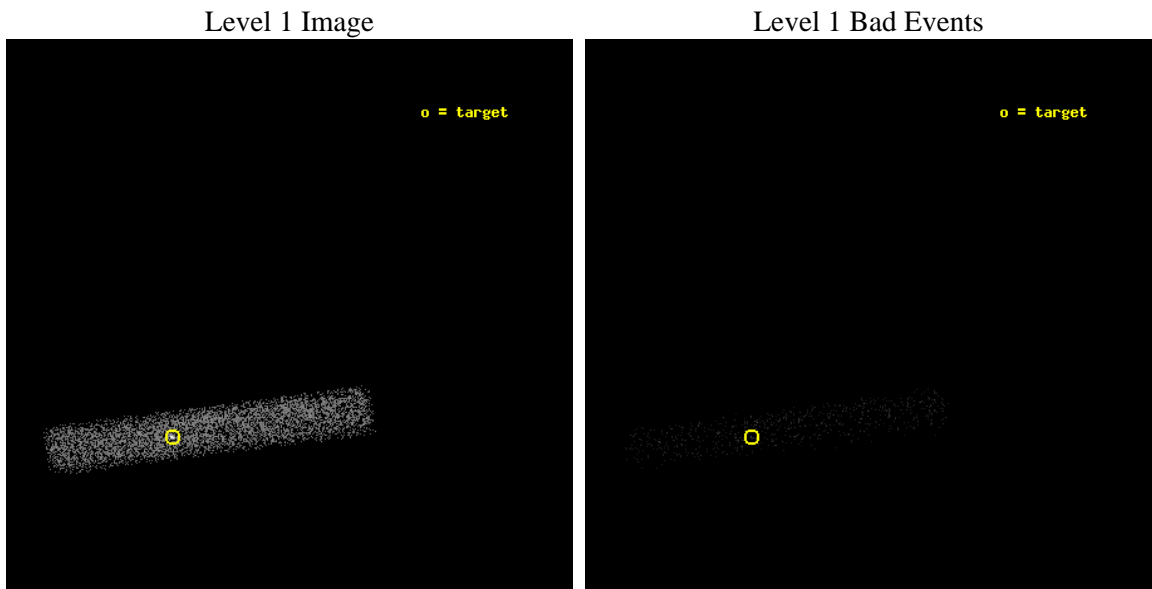
seq_num	400253	Sequence number
obs_id	3487	Observation id
title	VARIABLE THERMAL EMISSION AND FEATURE FROM AQL X-1 IN QUIESCENCE	P
observer	Prof. Robert Rutledge	Principal investigator
object	AQL X-1	Source name
dtcycle	0	
cycle	P	events from which exps? Prim/Second/Both
ra_targ	287.816667	Observer's specified target RA [deg]
dec_targ	0.585	Observer's specified target Dec [deg]
ra_nom	287.76577674652	Nominal RA [deg]
dec_nom	0.63419687441927	Nominal Dec [deg]
roll_nom	172.67260522868	Nominal Roll [deg]
revision	3	Processing version of data
ontime	6549.2000975609	Sum of GTIs [s]
livetime	5939.778793362	Livetime [s]
ontime7	6549.2000975609	Sum of GTIs [s]
l2events	3901	Number of level 2 events



2 OBI

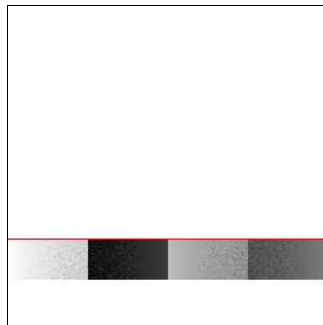
2.1 OBI

2.1.1 Images



2.1.2 Bias

Chip 7



2.1.3 Parameters

obi_num	0	Obi number	sched_exp_time	6400.000000	[s] Scheduled observation exposure time
ascdsver	8.4.5	Processing system revision	ontime	6549.2000975609	Sum of GTIs [s]
caldbver	4.5.2	 	ontime7	6549.2000975609	Sum of GTIs [s]
date	2012-10-10T04:18:21	Date and time of file creation	l1events	8888	Number of level 1 events
revision	3	Processing version of data			

2.1.4 Events

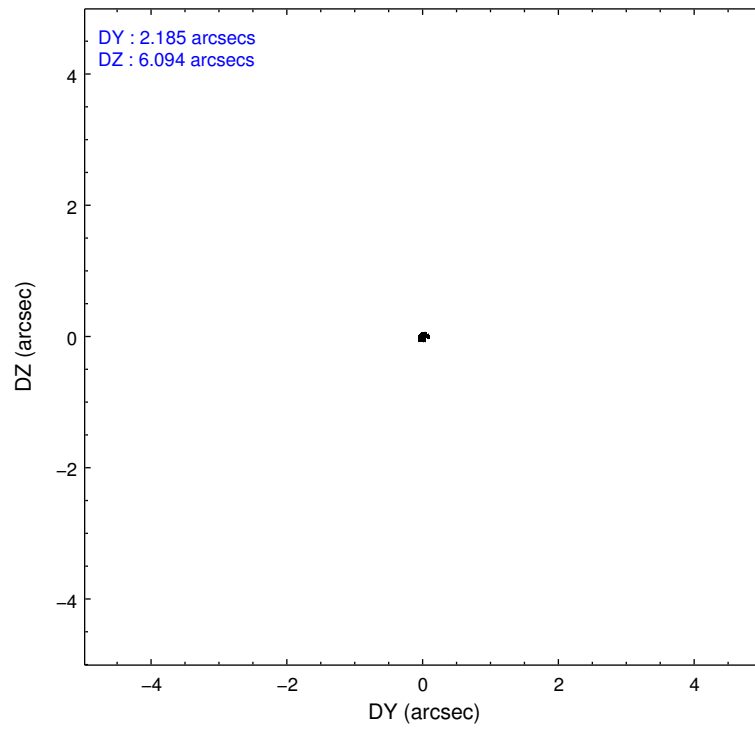
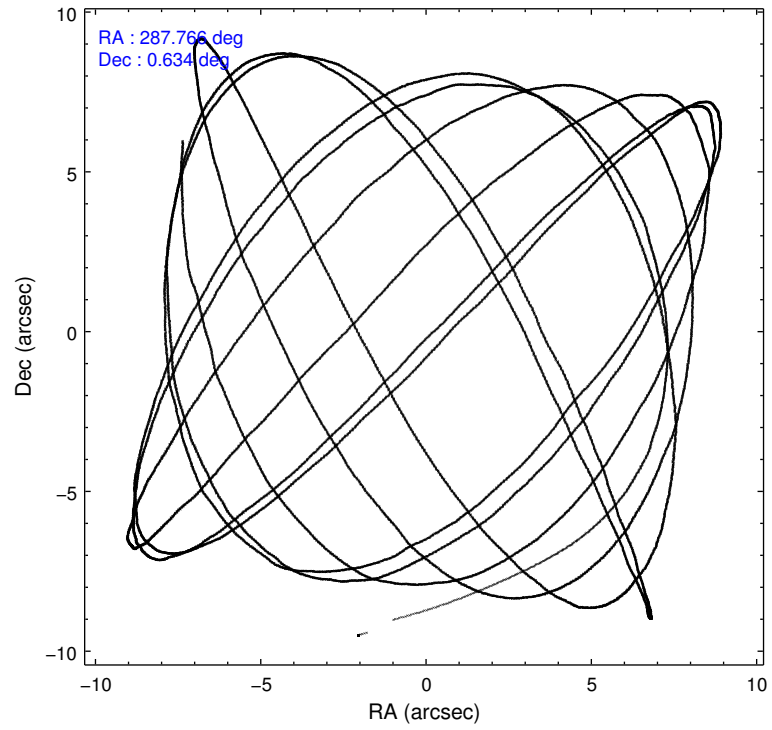
	ccd 7
level 1 events	8888
rejected events	4881
rejected %	54%

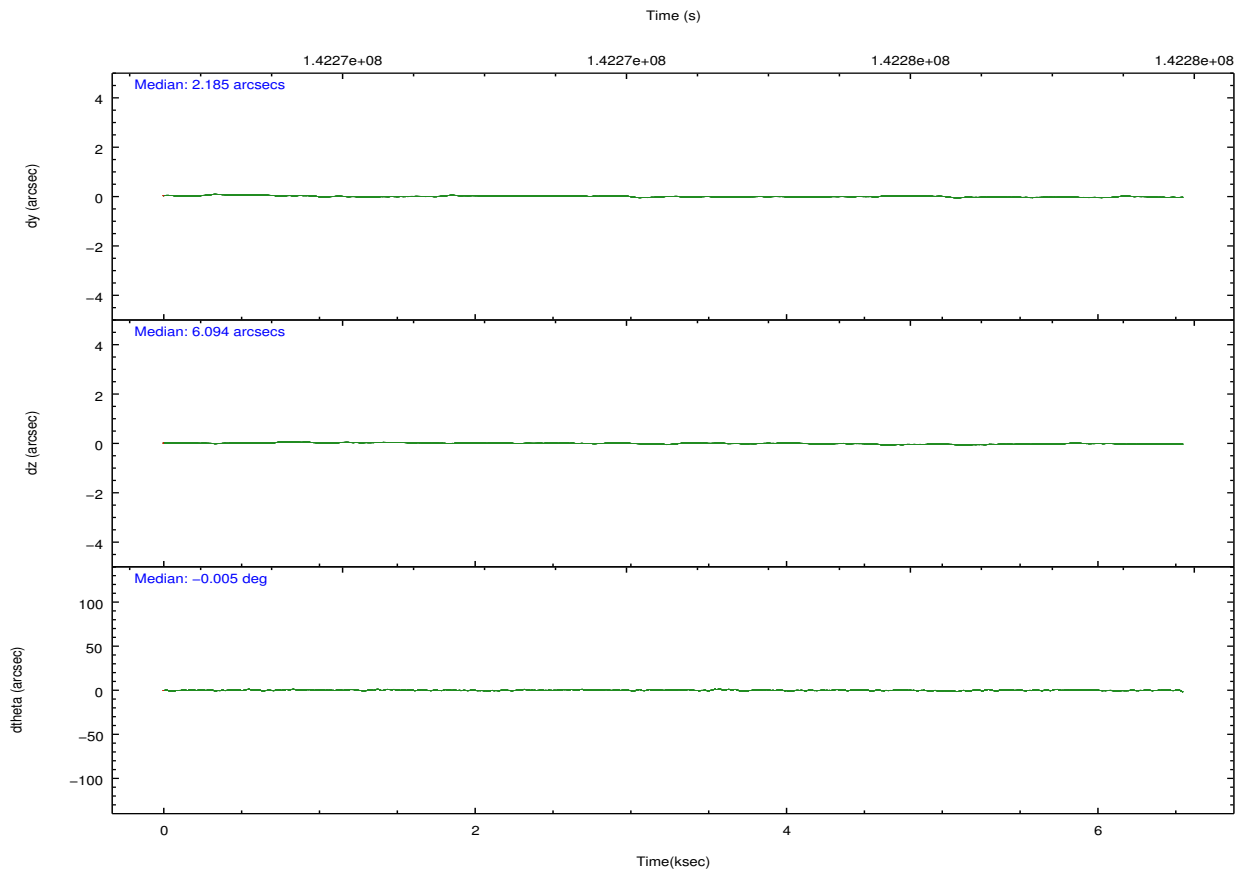
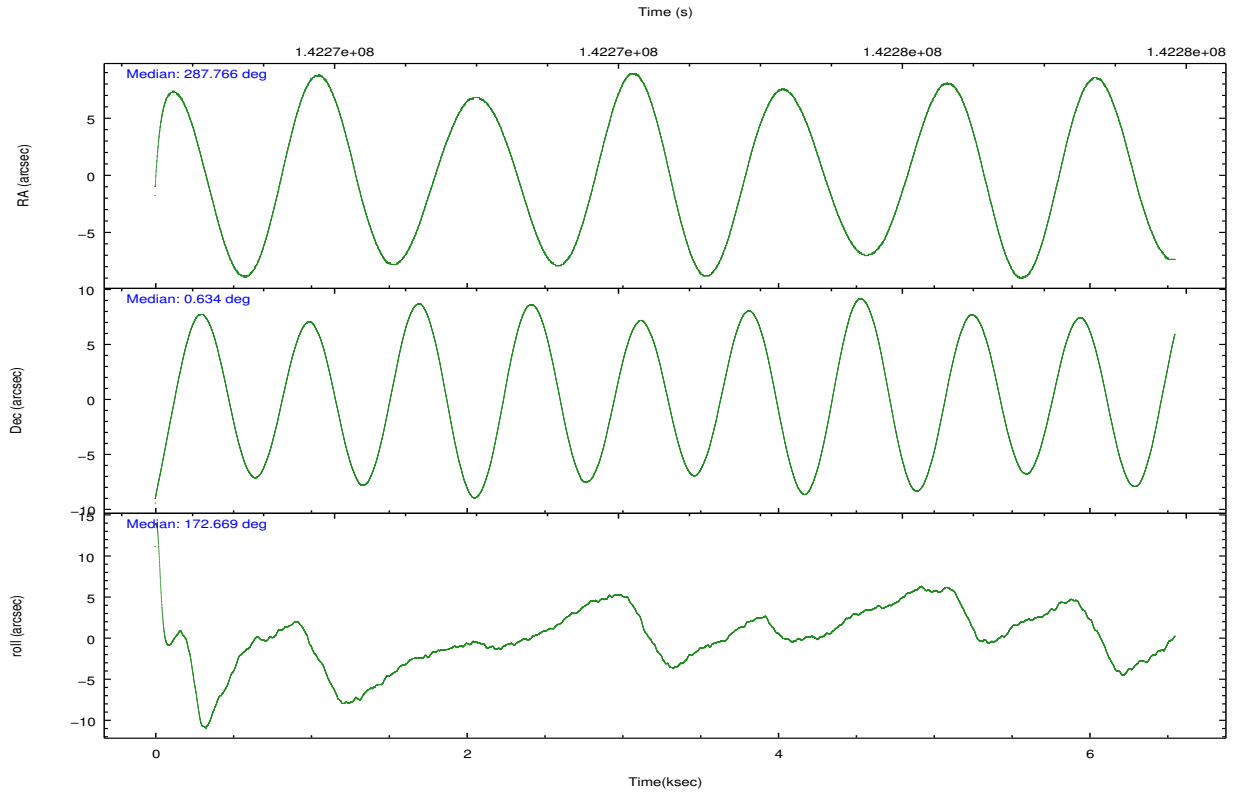
	ccd 7
grade 0 events	590
	6%
grade 1 events	6
	0%
grade 2 events	904
	10%
grade 3 events	601
	6%
grade 4 events	606
	6%
grade 5 events	738
	8%
grade 6 events	1816
	20%
grade 7 events	3627
	40%

2.2 Compared Parameters

Parameter	Planned	Actual	Parameter	Planned	Actual
Instrument	ACIS	ACIS	Obspar format version number	7	7
Detector	ACIS-7	ACIS-7	Obspar file type	PREDICTED	ACTUAL
Grating	NONE	NONE	Obspar update status	NONE	UPDATED
Data mode	FAINT	FAINT	Number of optional ACIS chips dropped	0	0
Observation mode	POINTING	POINTING	On-chip summing requested	N	N
[deg] Pointing RA	287.790766	287.7657767465158	Subarray requested	CUSTOM	1/8
[deg] Pointing Dec	0.645050	0.6341968744192665	Subarray start row	150	150
[deg] Pointing Roll	172.515658	172.6726052286833	Subarray row count	128	128
[mm] SIM focus pos	-0.684267	-0.6828225247311905	Alternating exposures requested	N	N
[mm] SIM defocus	0	0.001444936568705701	[s] Primary exposure time	0.000000	0.4
[mm] SIM translation stage pos	-190.132523	-190.1425803651734			
[mm] SIM translation stage offset	0	0.01005778216563158			
[s] Observation start time (MET)	142271203.184000	142270188.12543			
Observation start date	2002-07-05T15:45:39	2002-07-05T15:29:48			
[s] Observation end time (MET)	142277603.184000	142278304.07576			
Observation end date	2002-07-05T17:32:19	2002-07-05T17:45:04			
Read mode	TIMED	TIMED			

2.3 Aspect



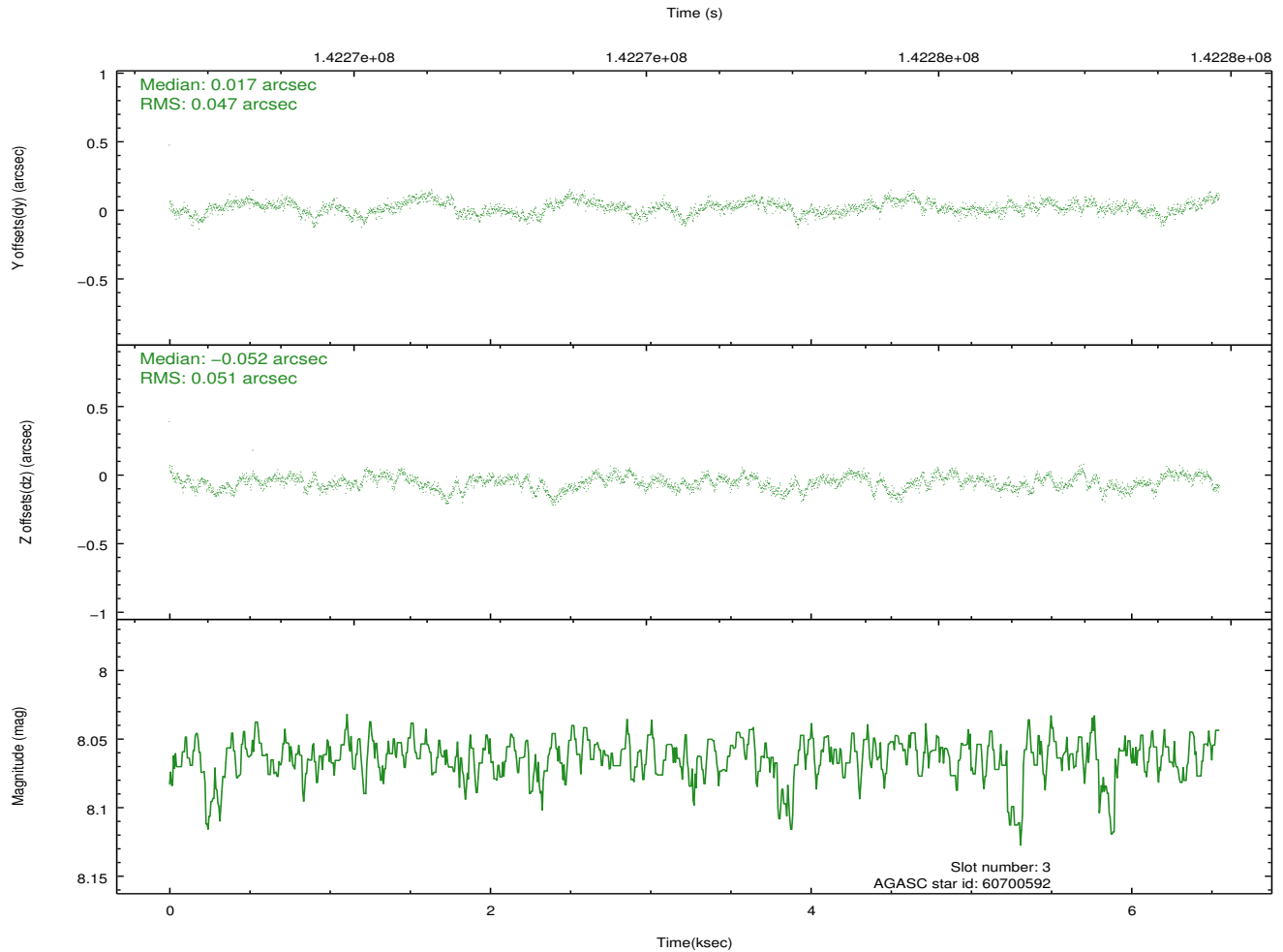
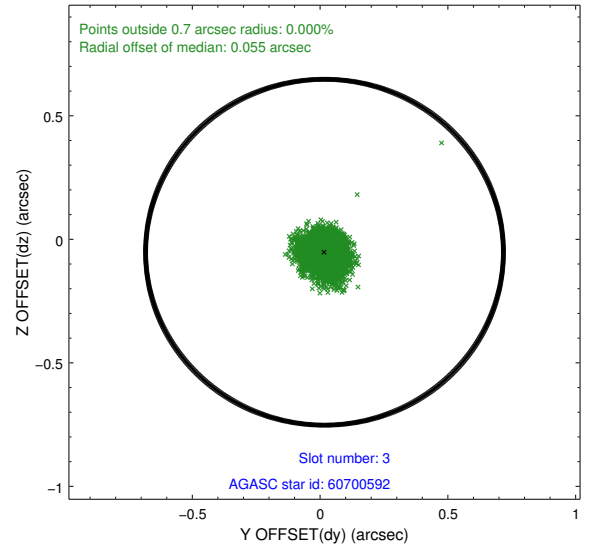
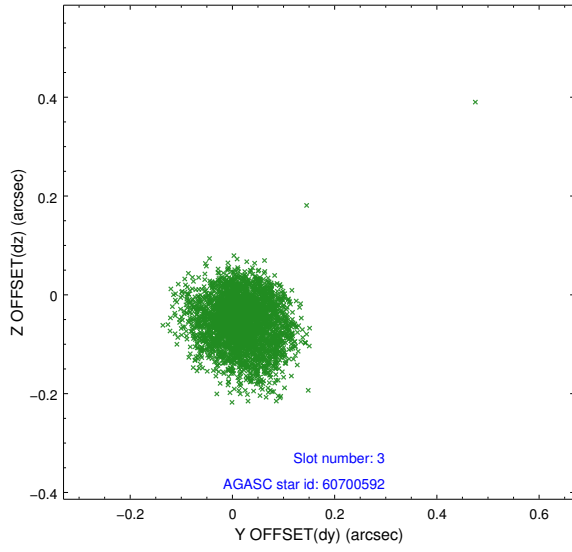


Slot Statistics

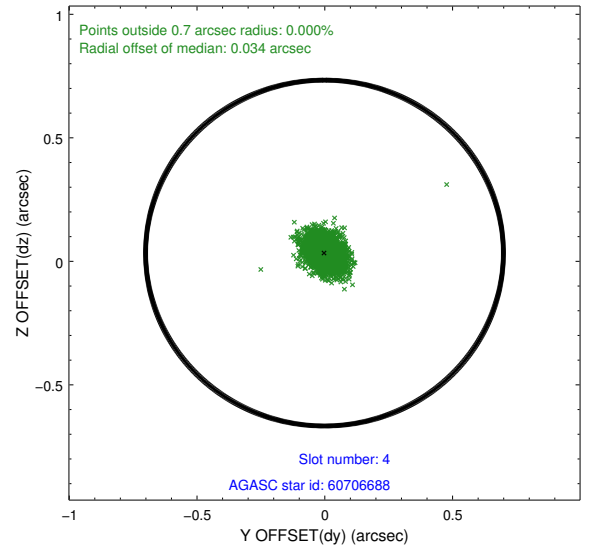
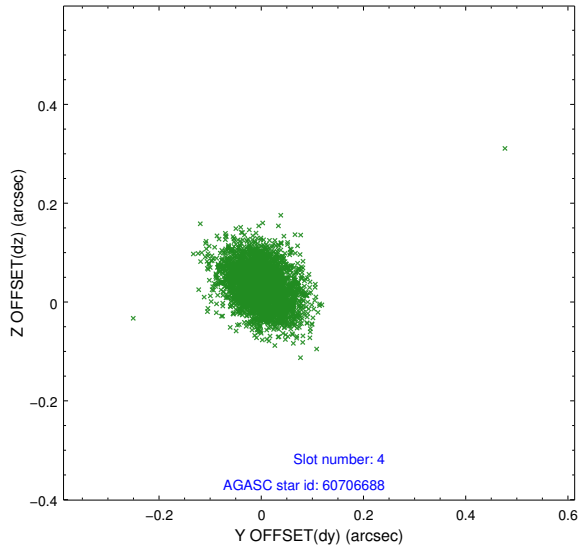
slot	status	id	mag	n_pts	med_dy	med_dz	dr1	dr2	ra	dec	mean_y	mean_z
0	FID	ACIS-S-2	7.12	1598	-0.057	-0.007	0.010	0.015	0.000000	0.000000	-754.82	-1727.20
1	FID	ACIS-S-4	7.21	1598	0.008	0.029	0.007	0.012	0.000000	0.000000	2158.07	180.46
2	FID	ACIS-S-5	7.24	1598	0.018	-0.013	0.008	0.013	0.000000	0.000000	-1806.48	175.02
3	GUIDE	60700592	8.06	3196	0.017	-0.052	0.074	0.116	287.530354	0.932002	1063.88	-901.65
4	GUIDE	60706688	8.71	3193	-0.001	0.033	0.060	0.096	287.637938	0.689635	566.53	-87.22
5	GUIDE	60698176	8.88	3195	-0.055	0.031	0.074	0.122	287.425571	1.234708	1579.85	-1932.64
6	GUIDE	60705928	9.02	3196	0.022	-0.044	0.081	0.134	287.833535	0.715711	-119.15	-272.44
7	GUIDE	60708936	9.11	3194	0.014	0.037	0.075	0.122	287.407925	0.924863	1497.40	-818.80

2.4 Star Slots

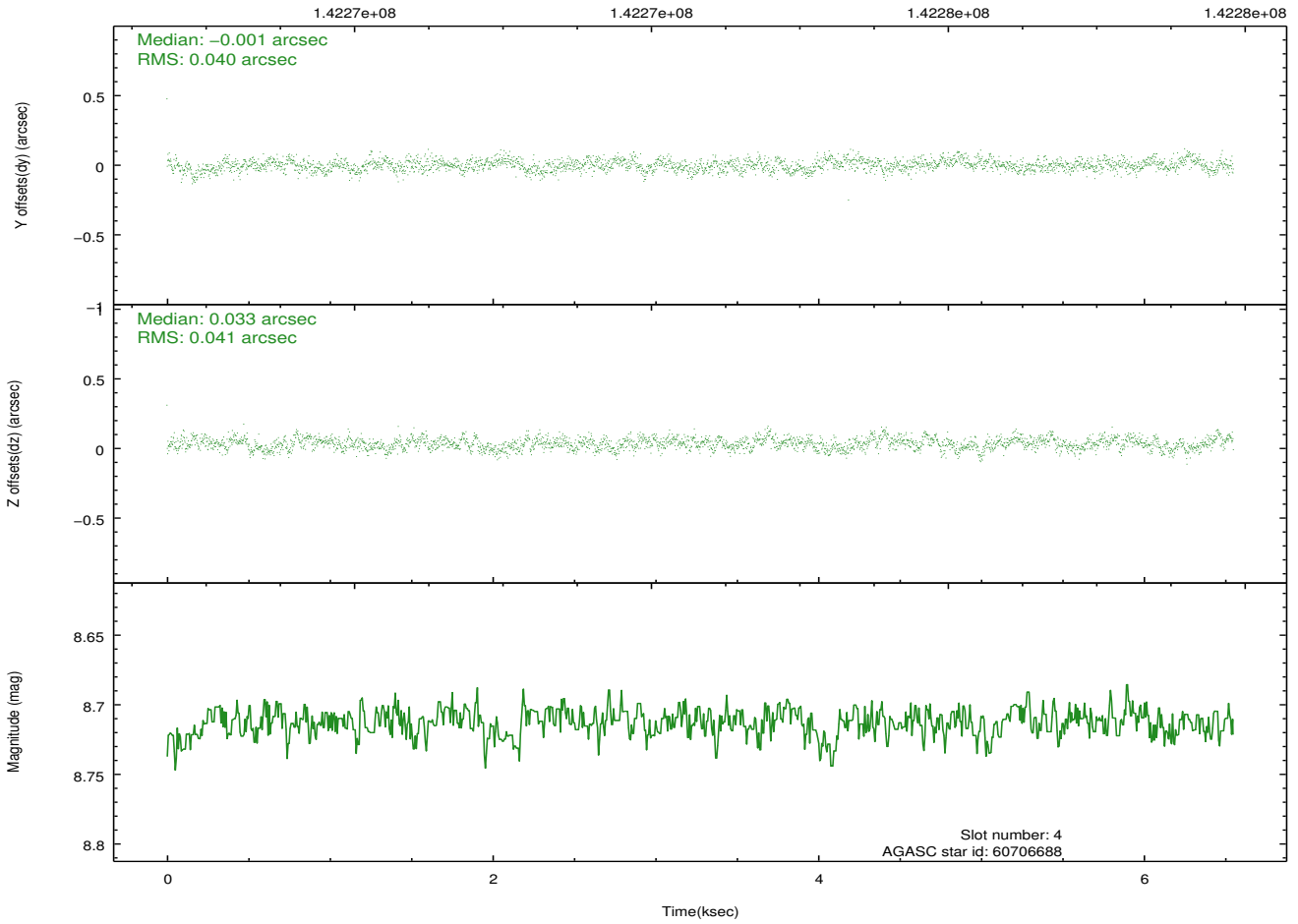
2.4.1 Slot 3



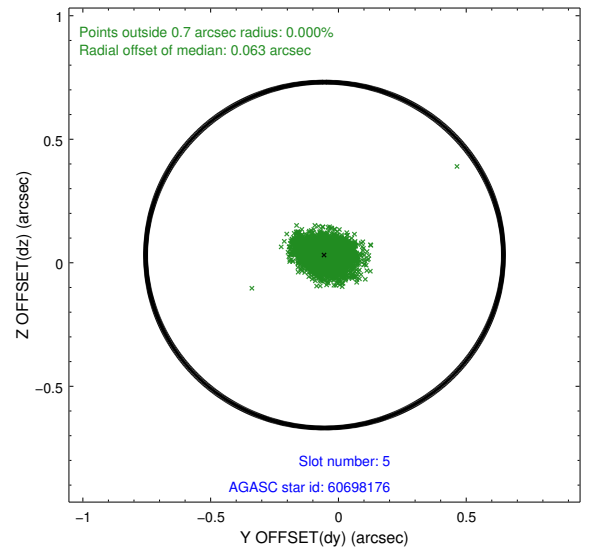
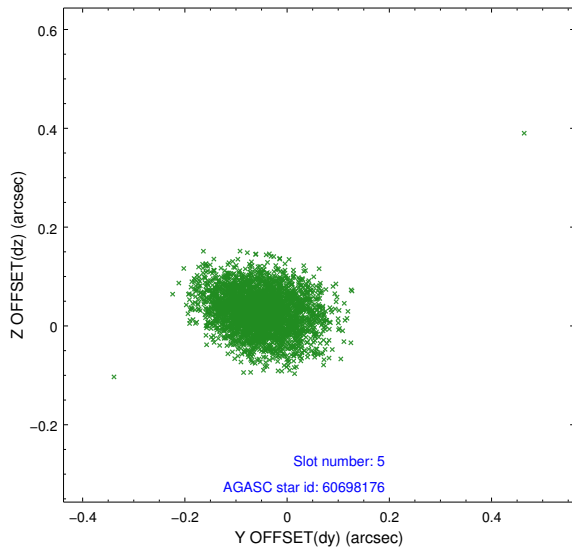
2.4.2 Slot 4



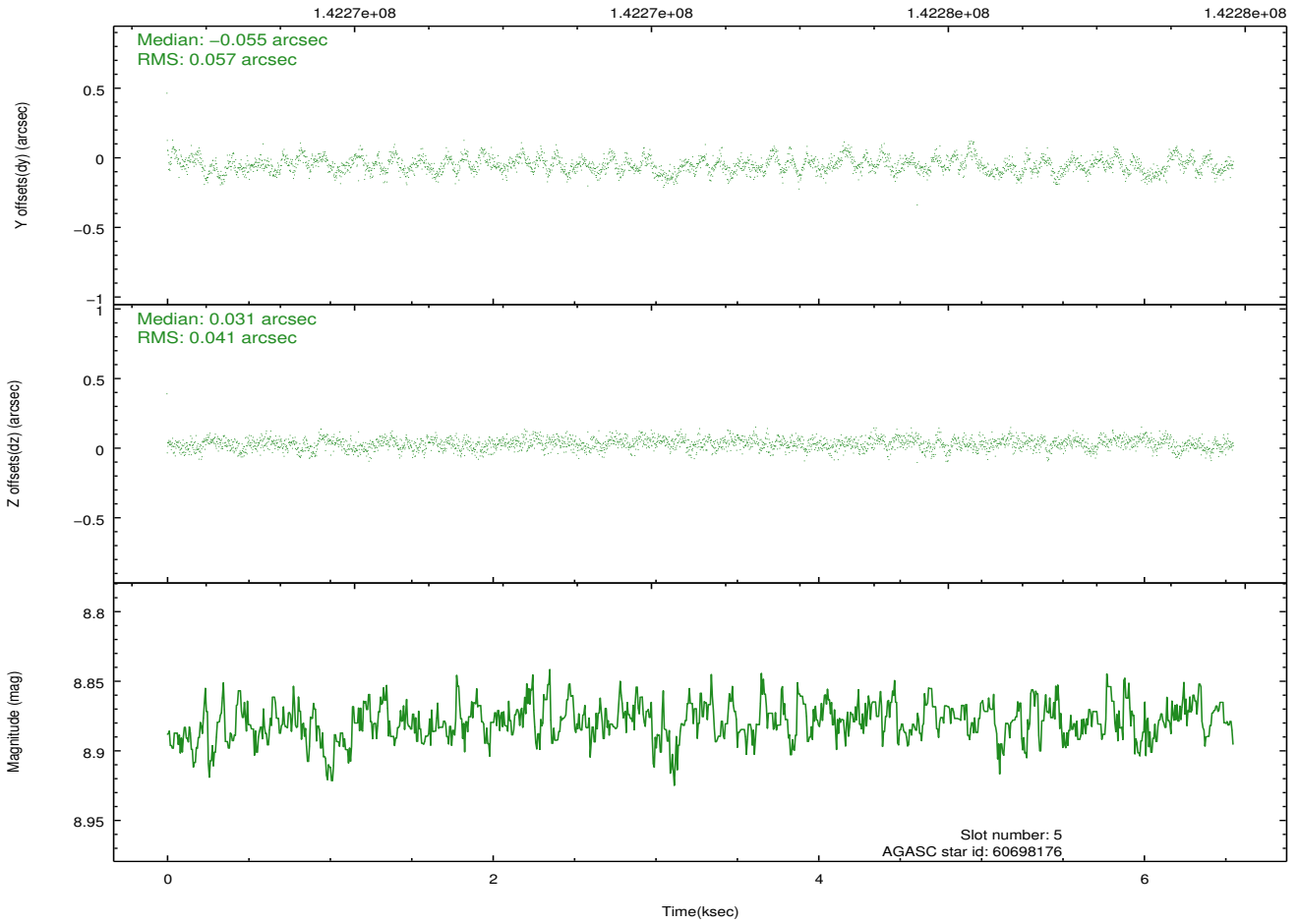
Time (s)



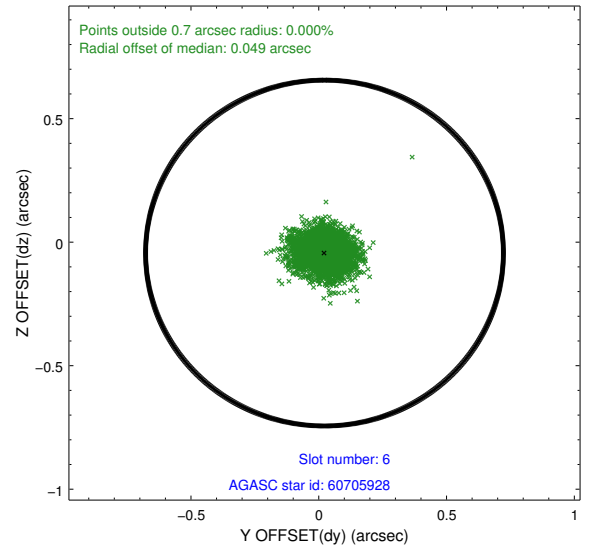
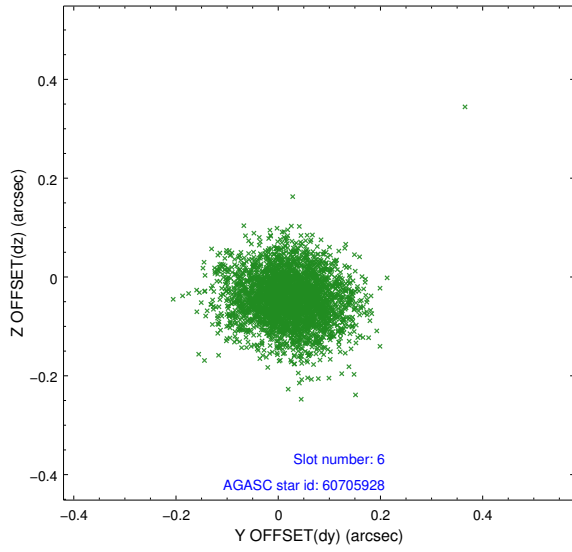
2.4.3 Slot 5



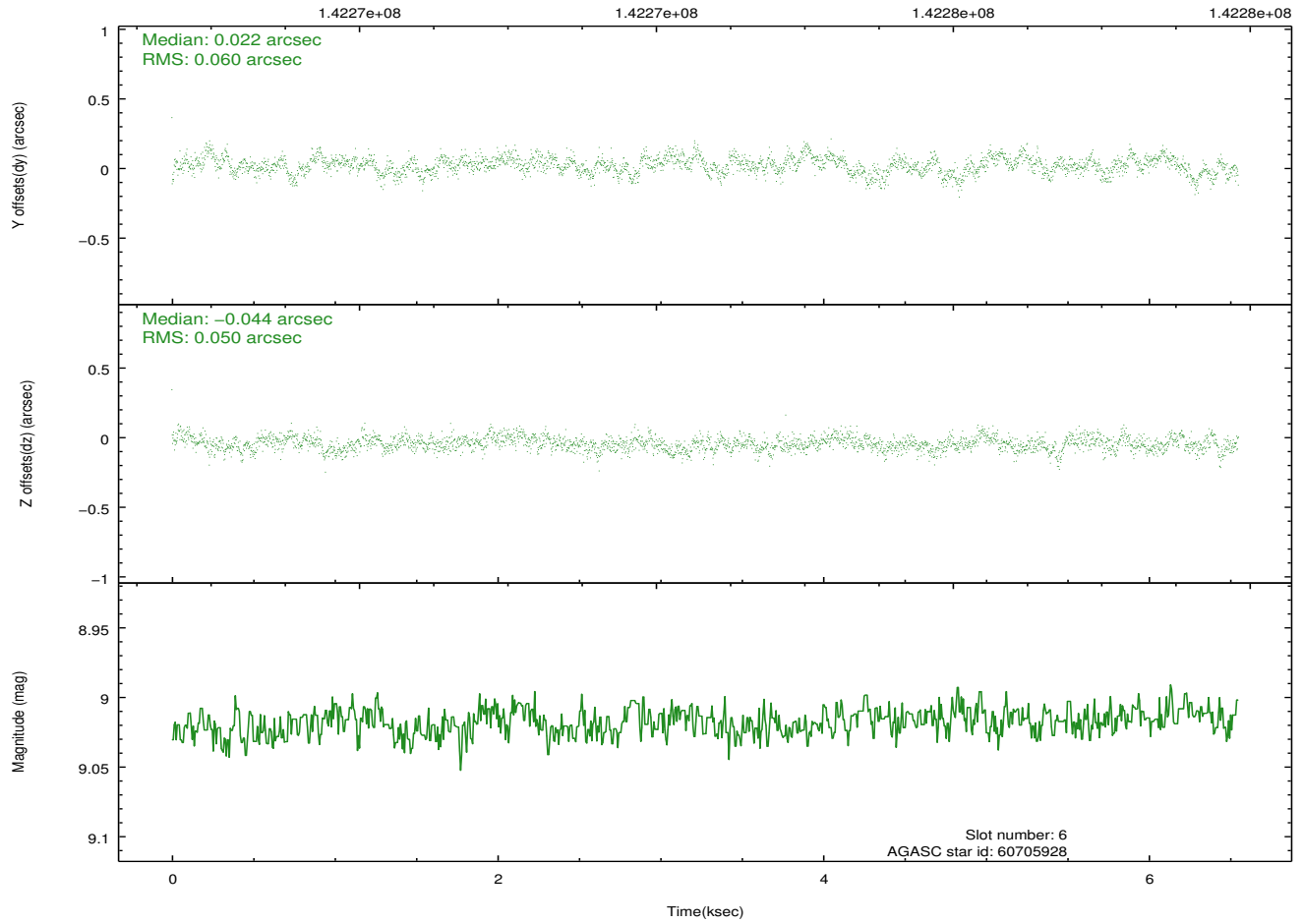
Time (s)



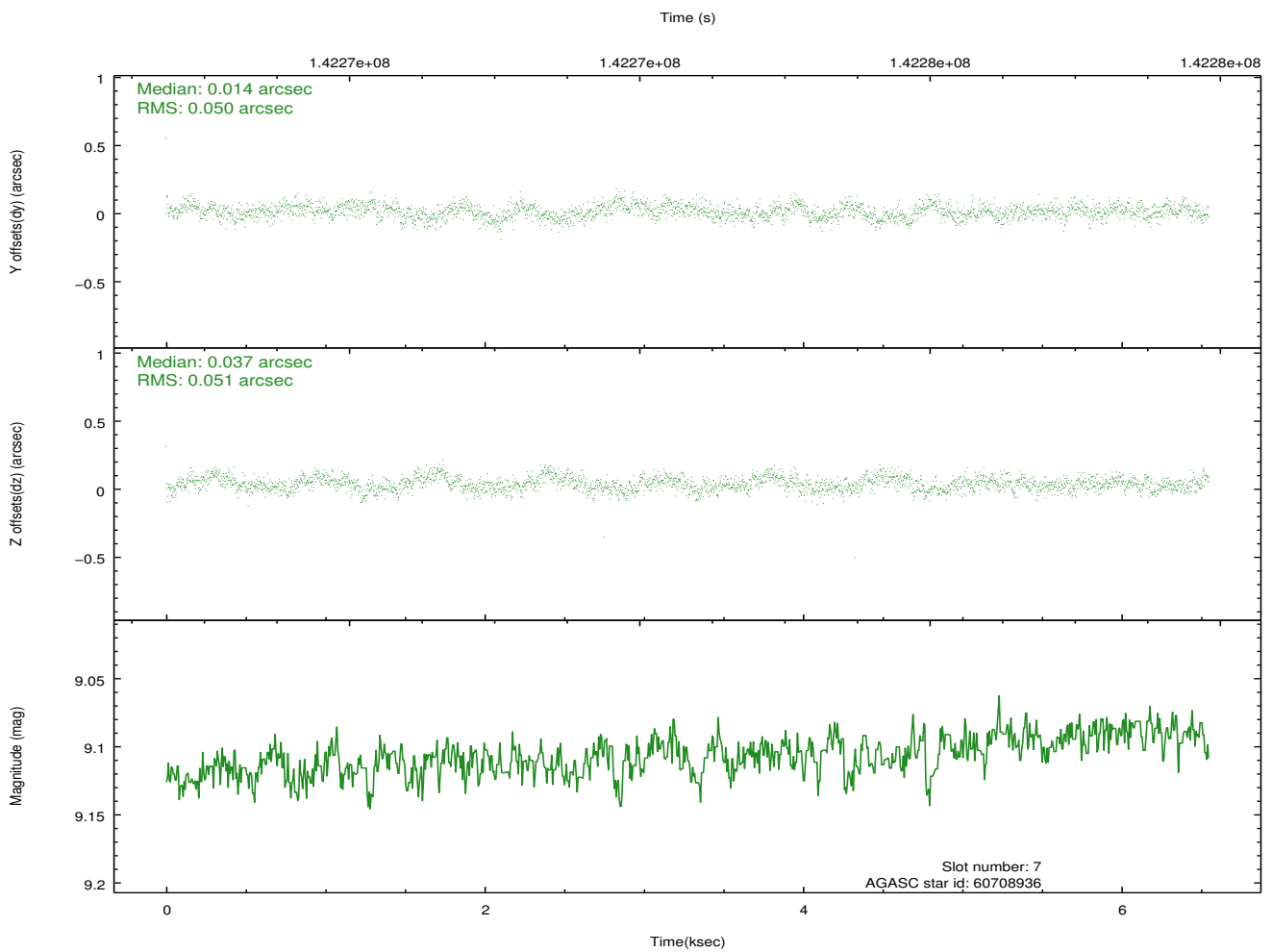
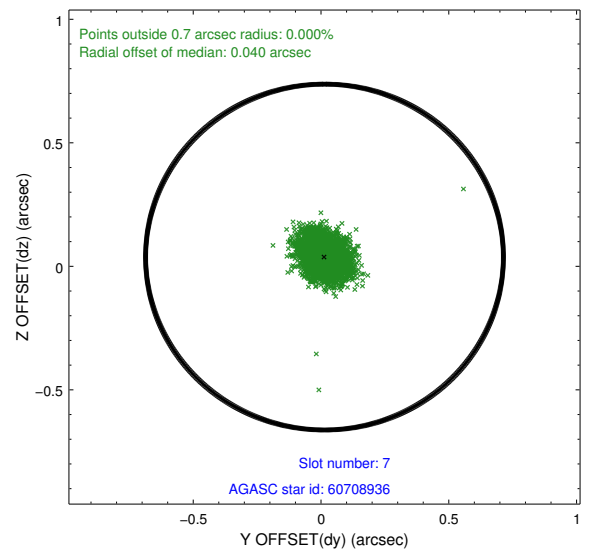
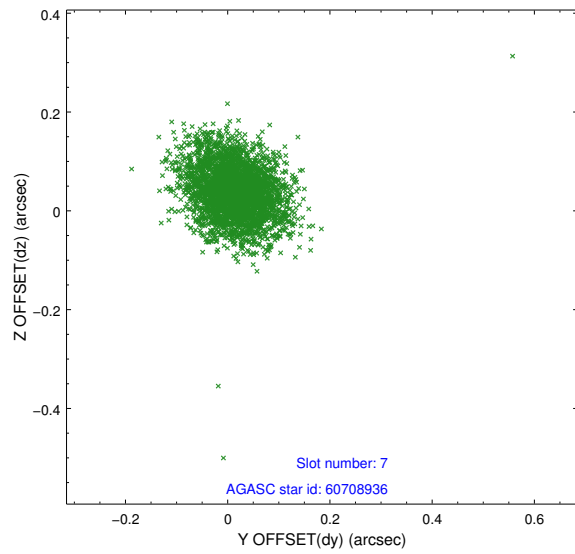
2.4.4 Slot 6



Time (s)

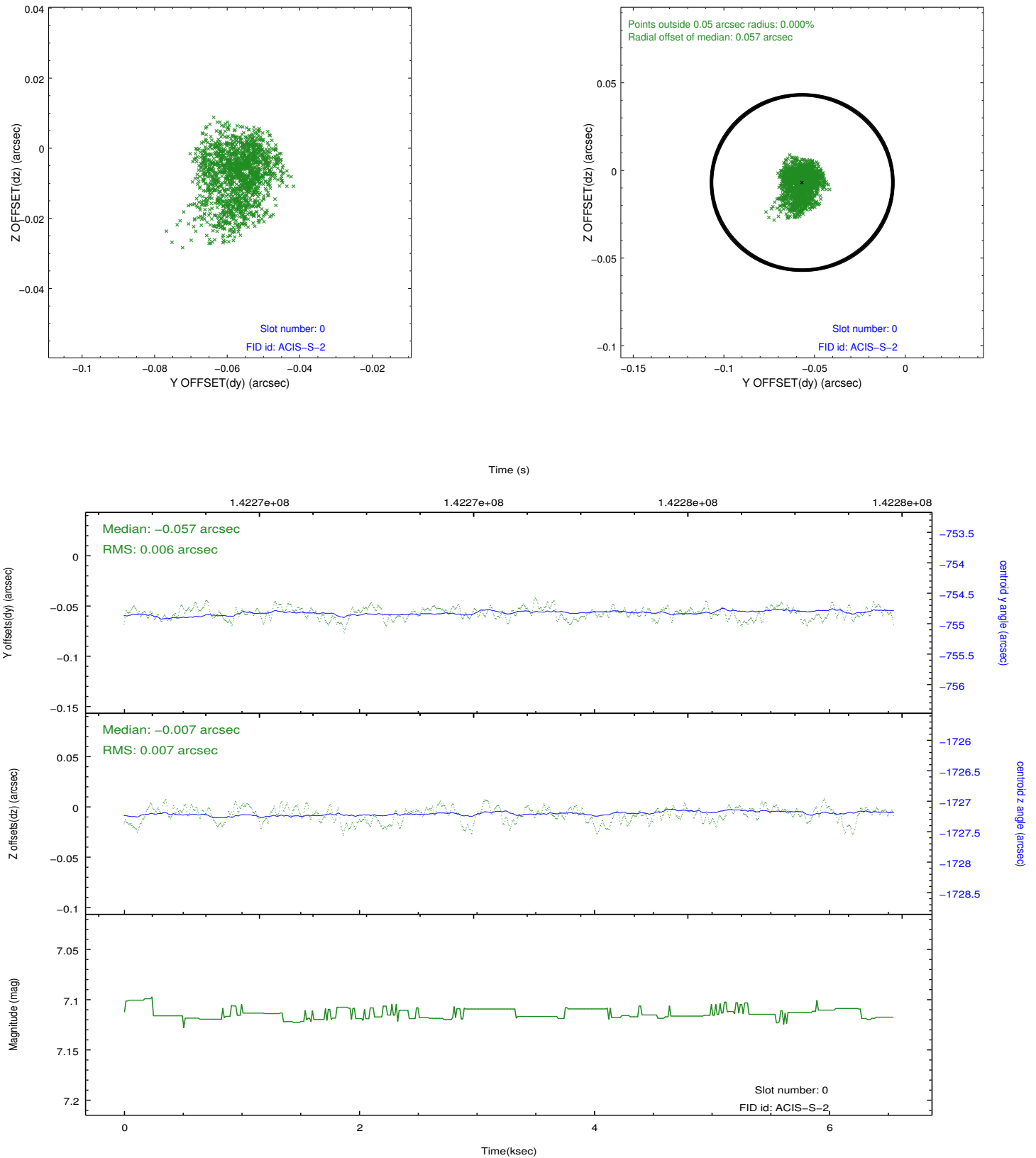


2.4.5 Slot 7

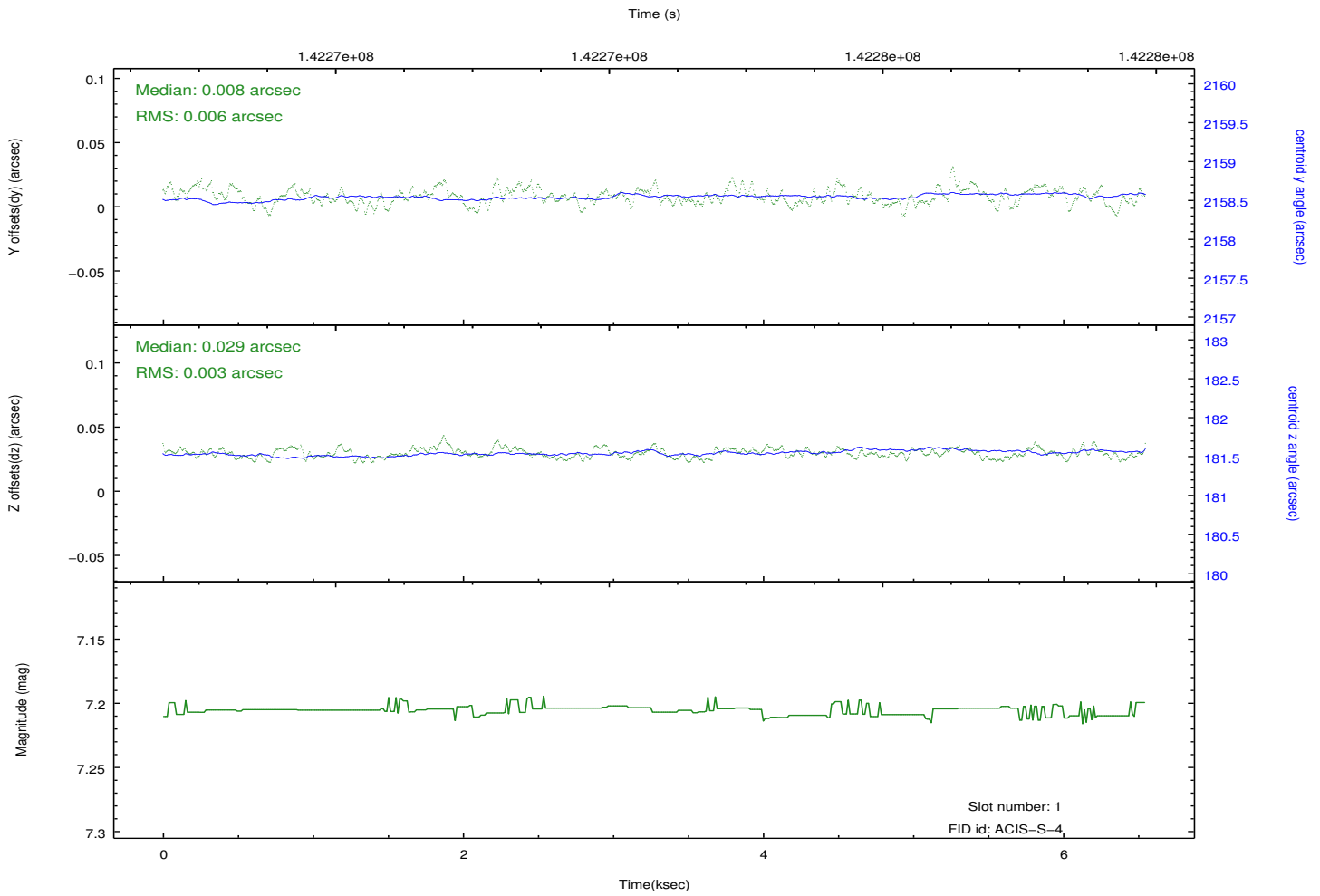
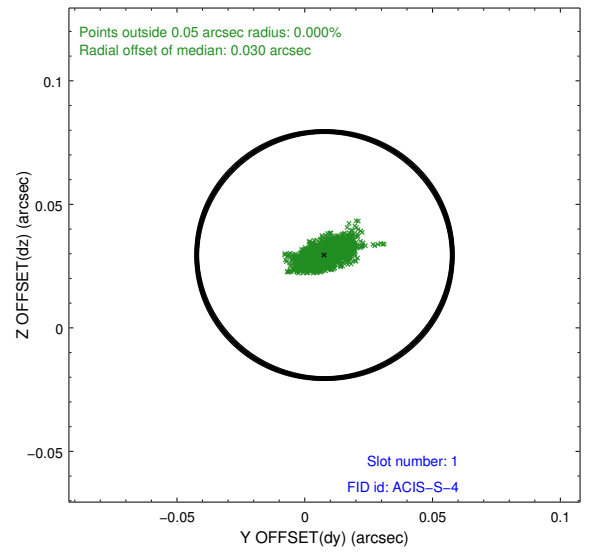
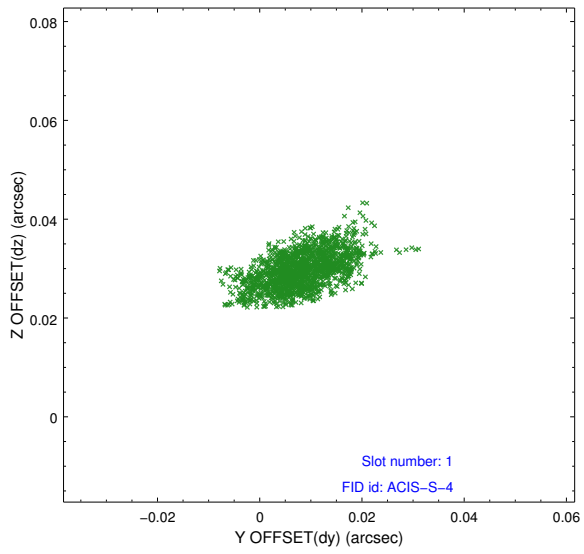


2.5 FID Slots

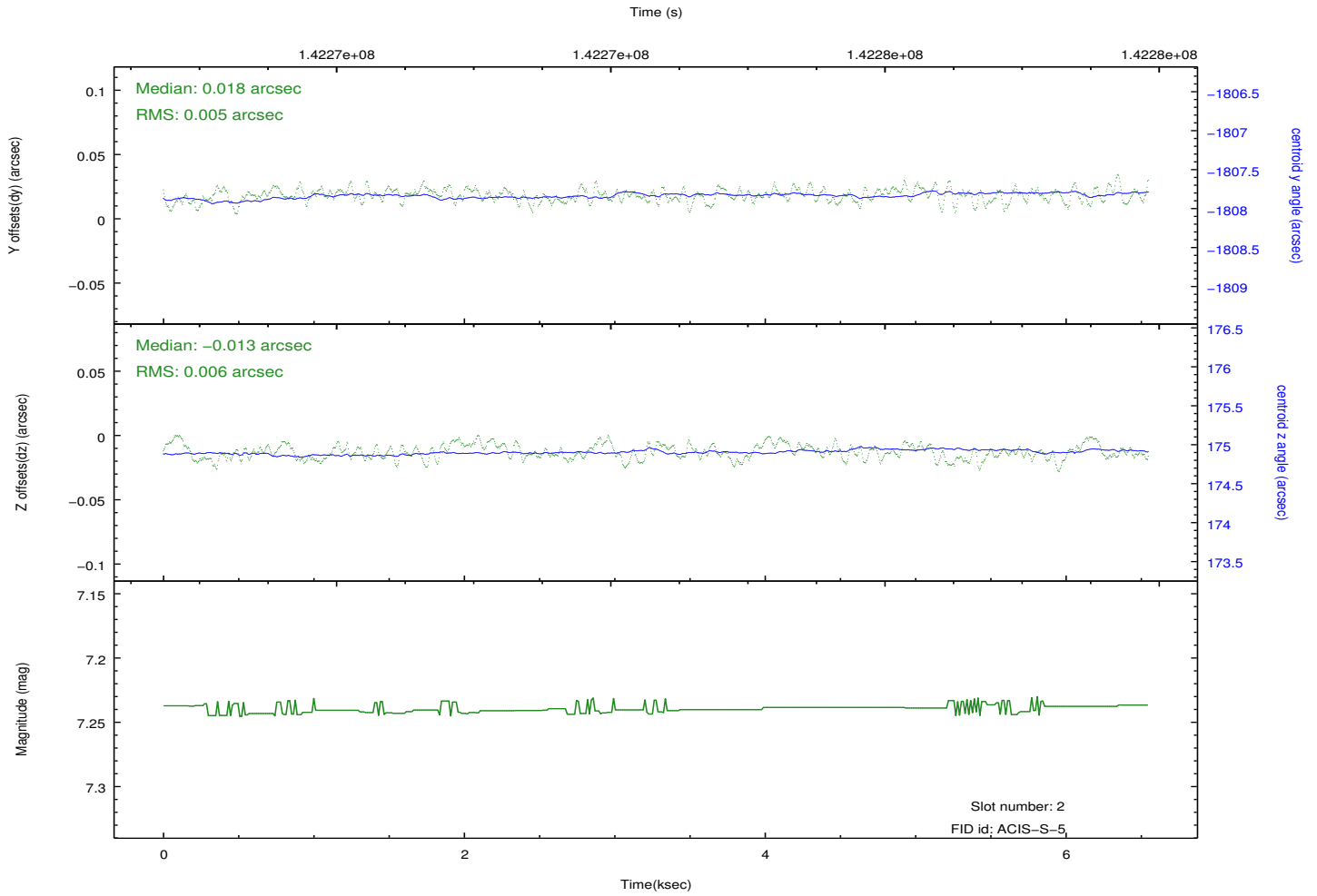
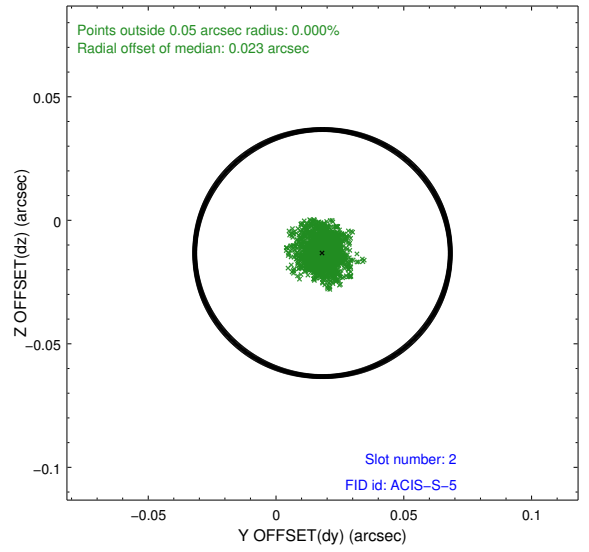
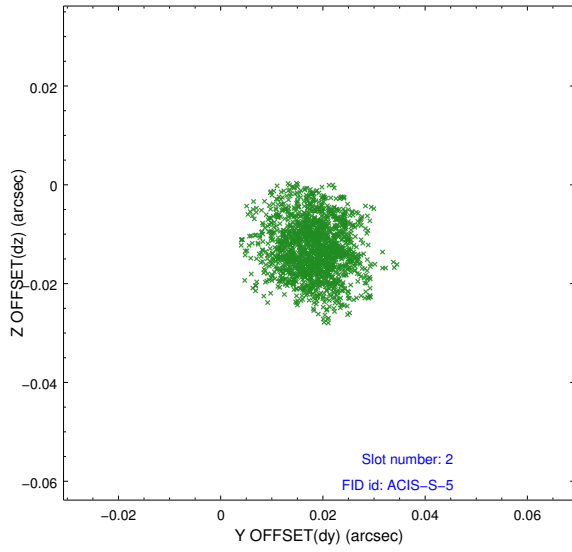
2.5.1 Slot 0



2.5.2 Slot 1



2.5.3 Slot 2



A Summary

A.1 Status

V&V Scientist	Beth Sundheim
V&V Date (YYYY-MM-DD)	2012.10.19
V&V Edition	1
V&V Disposition and Status	OK
V&V Charge Time	6.549

A.2 Comments