

V&V Reference Report

L2 ASCDS Version : 8.4.5

Observation 3677 - L2 Version 3
Chandra X-Ray Center

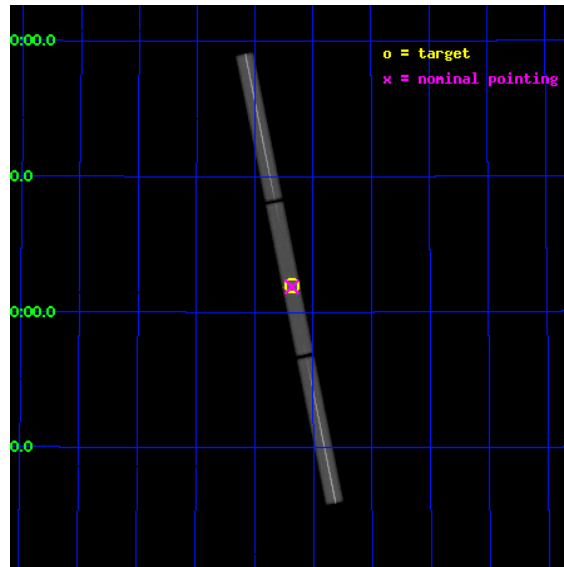
L2 Processing Date : Nov 1 2012

Contents

1	Front	2
2	OBI	3
2.1	OBI	3
2.1.1	Images	3
2.1.2	Parameters	4
2.1.3	Events	4
2.2	Compared Parameters	5
2.3	Aspect	6
2.4	Star Slots	9
2.4.1	Slot 3	9
2.4.2	Slot 4	10
2.4.3	Slot 5	11
2.4.4	Slot 6	12
2.4.5	Slot 7	13
2.5	FID Slots	14
2.5.1	Slot 0	14
2.5.2	Slot 1	15
2.5.3	Slot 2	16
3	Gratings	17
3.1	LETG Arm	17
A	Summary	19
A.1	Status	19
A.2	Comments	19

1 Front

seq_num	290231	Sequence number
obs_id	3677	Observation id
title	AO4 CALIBRATION OBSERVATIONS OF HZ43	Proposal title
observer	Dr. CXC Calibration	Principal investigator
object	HZ43	Source name
ra_targ	199.092083	Observer's specified target RA [deg]
dec_targ	29.099	Observer's specified target Dec [deg]
ra_nom	199.09085379364	Nominal RA [deg]
dec_nom	29.094378310705	Nominal Dec [deg]
roll_nom	258.41809081711	Nominal Roll [deg]
revision	3	Processing version of data
ontime	20179.432110429	[s]
livetime	20009.29670733	Ontime multiplied by DTCOR
l2events	1681748	Number of level 2 events

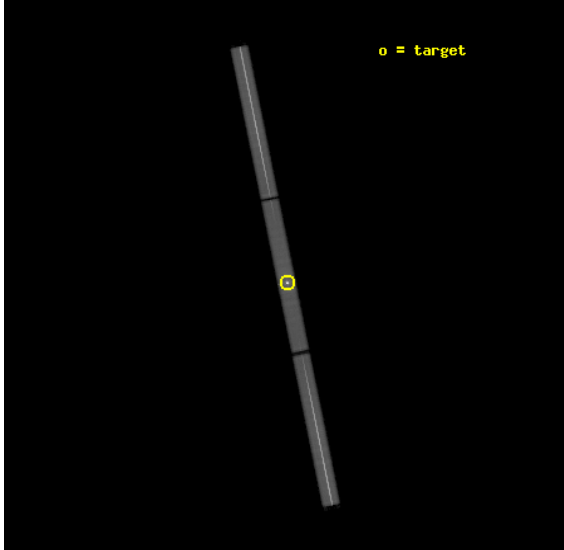


2 OBI

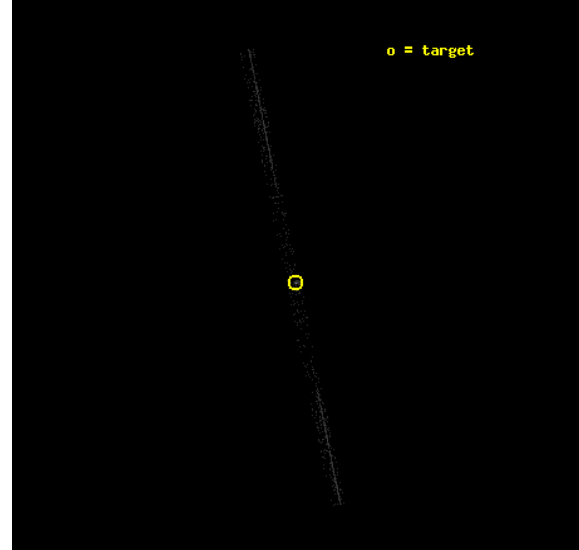
2.1 OBI

2.1.1 Images

Level 1 Image



Level 1 Bad Events



2.1.2 Parameters

obi_num	0	Obi number	sched_exp_time	20000.000000	[s] Scheduled observation exposure time
ascdsver	8.4.5	Processing system revision	ontime	20179.432110429	[s]
caldbver	4.5.2	 	l1events	2100512	Number of level 1 events
date	2012-11-01T09:11:07	Date and time of file creation			
revision	3	Processing version of data			

2.1.3 Events

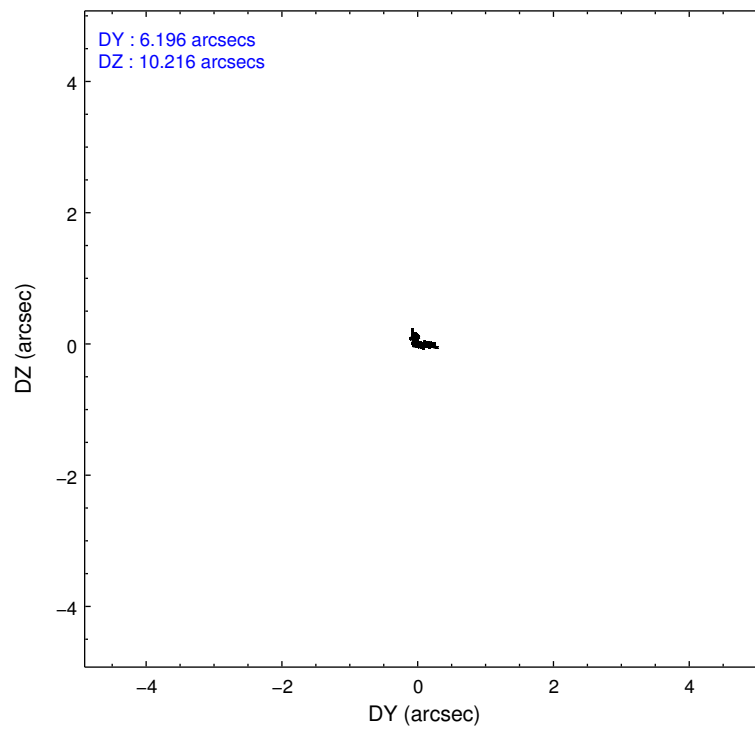
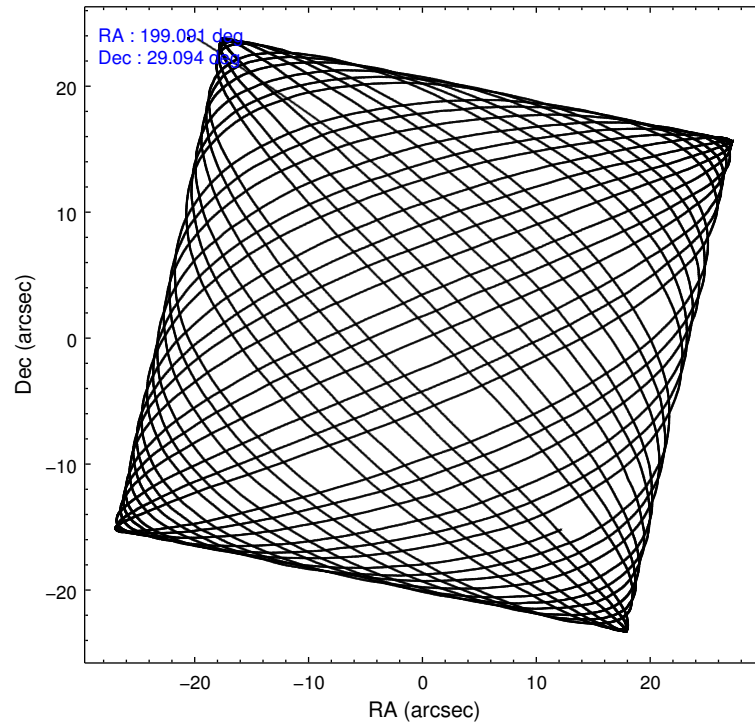
Level 1 Events

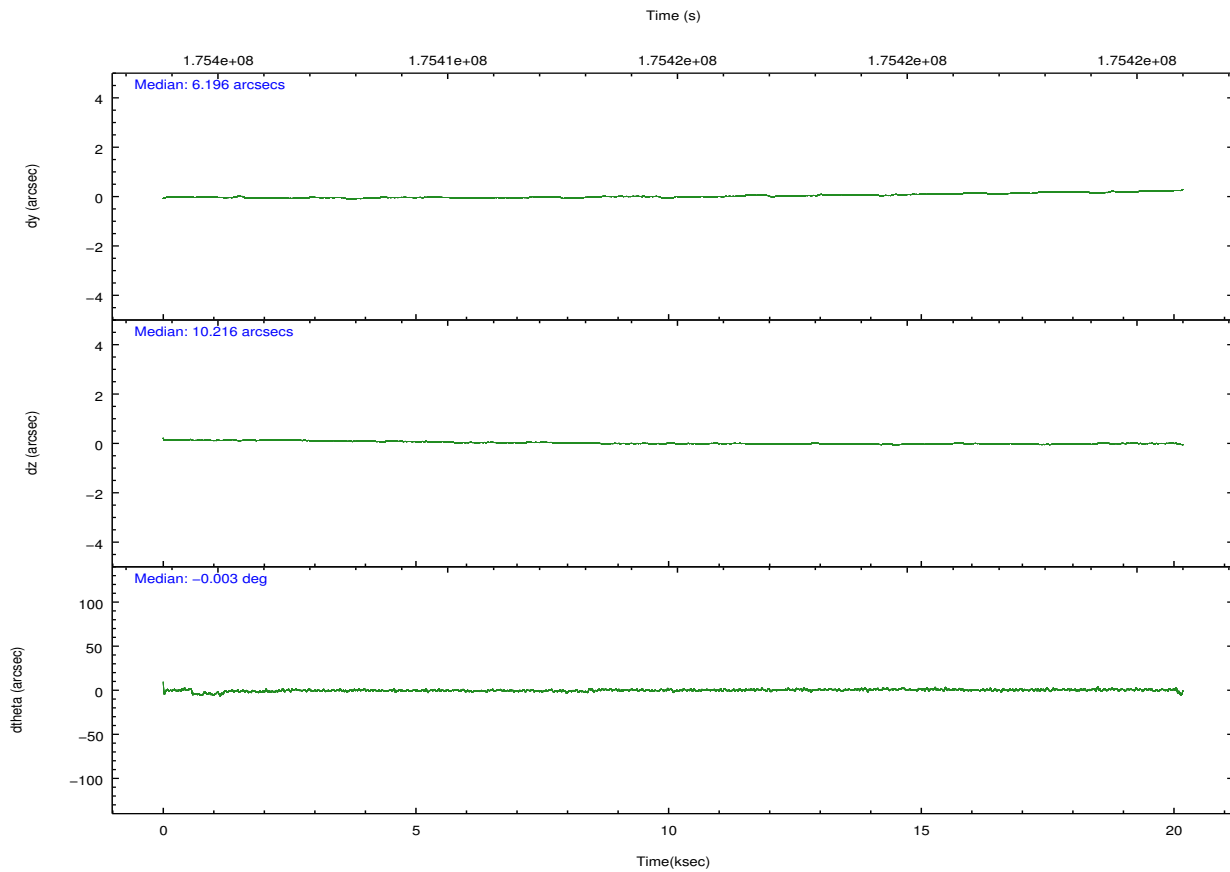
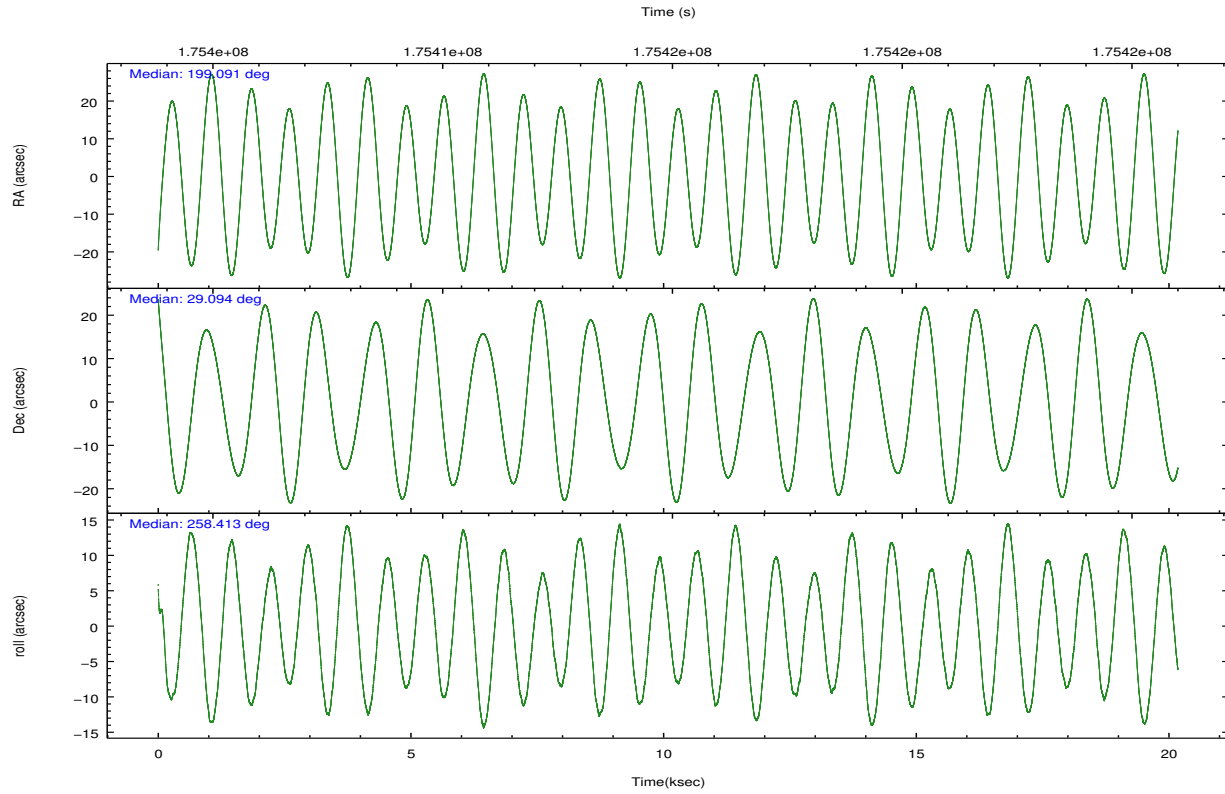
	segment 1	segment 2	segment 3
level 1 events	734796	617778	747938
rejected events	17122	15783	17189
rejected %	2%	2%	2%

2.2 Compared Parameters

Parameter	Planned	Actual	Parameter	Planned	Actual
Instrument	HRC	HRC	Obspar format version number	7	7
Detector	HRC-S	HRC-S	Obspar file type	PREDICTED	ACTUAL
Grating	LETG	LETG	Obspar update status	NONE	UPDATED
Data mode	OBSERVING	OBSERVING			
Observation mode	POINTING	POINTING			
[deg] Pointing RA	199.078991	199.0908537936445			
[deg] Pointing Dec	29.121102	29.09437831070499			
[deg] Pointing Roll	258.356531	258.4180908171149			
[s] Window start time (MET)	170812864.184000	170812864.184000			
[s] Window stop time (MET)	175996864.184000	175996864.184000			
[mm] SIM focus pos	-1.429586	-1.428180813131781			
[mm] SIM defocus	0.1037507710433287	0.1051558262725154			
[mm] SIM translation stage pos	250.455976	250.466033080201			
[mm] SIM translation stage offset	0	-0.01005468664627074			
[s] Observation start time (MET)	175404993.184000	175404283.64954			
Observation start date	2003-07-24T03:35:29	2003-07-24T03:24:43			
[s] Observation end time (MET)	175424993.184000	175425163.41293			
Observation end date	2003-07-24T09:08:49	2003-07-24T09:12:43			

2.3 Aspect



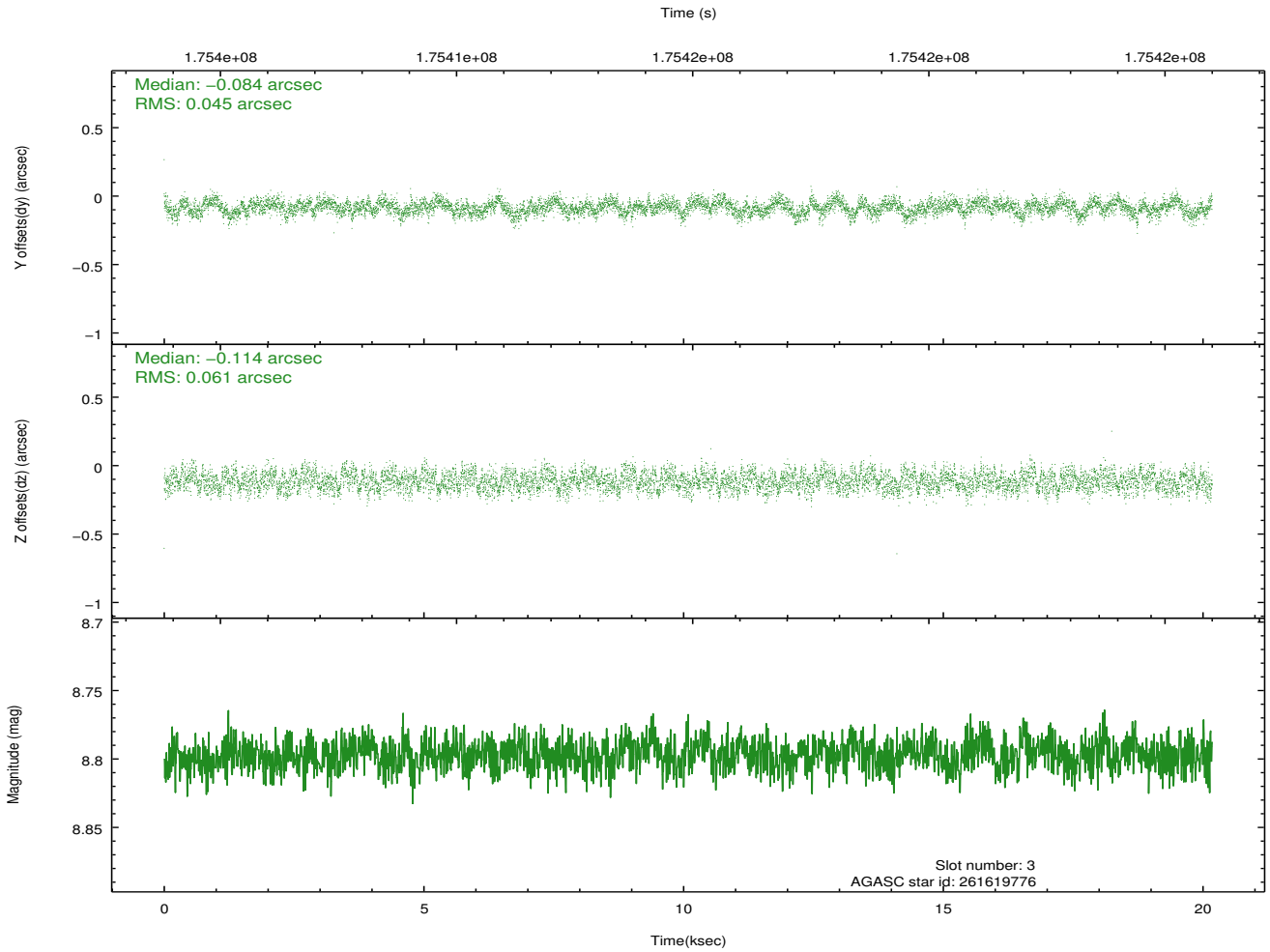
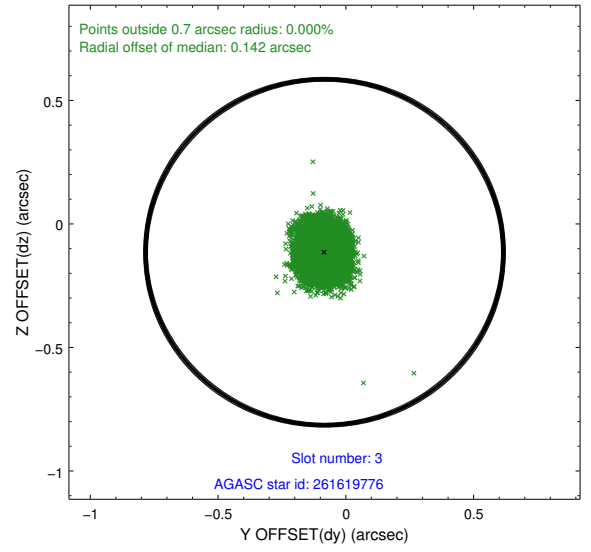
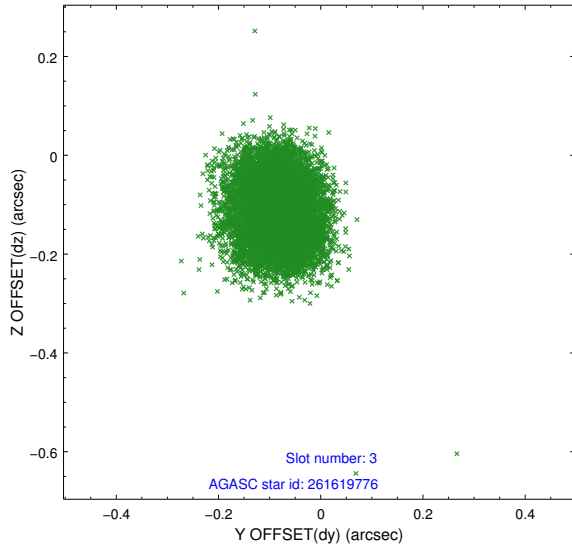


Slot Statistics

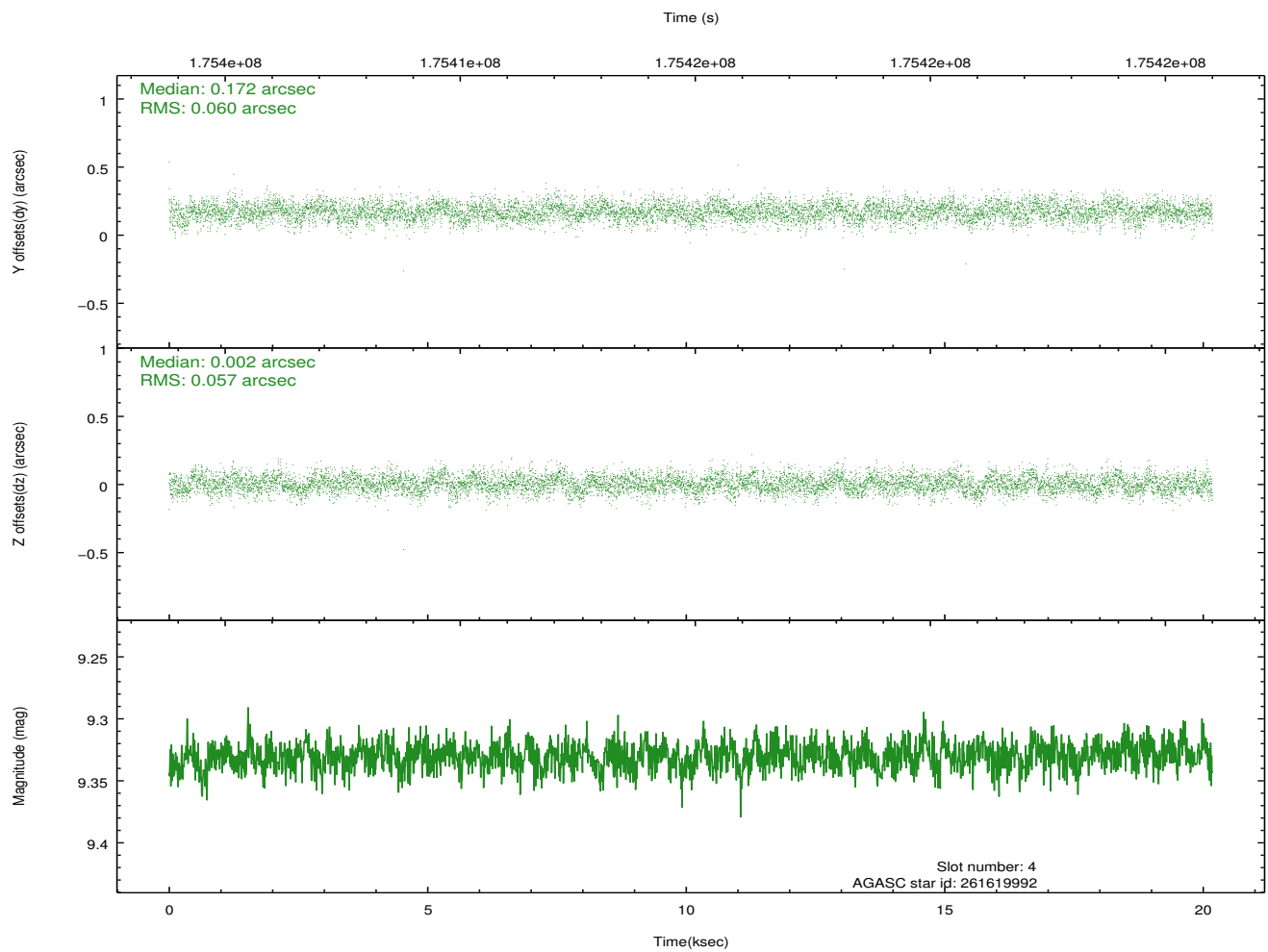
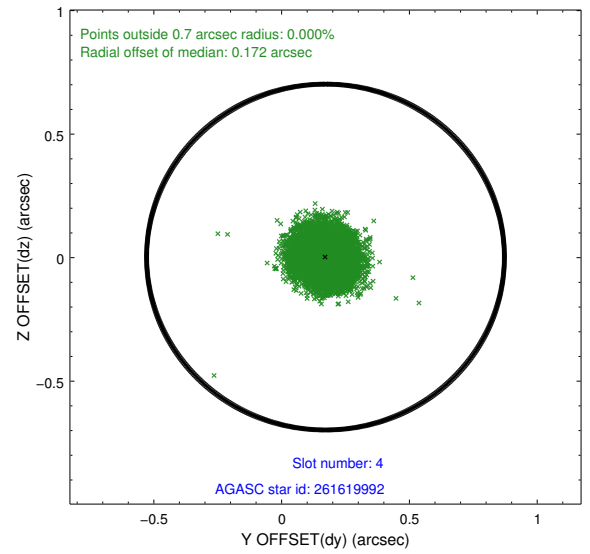
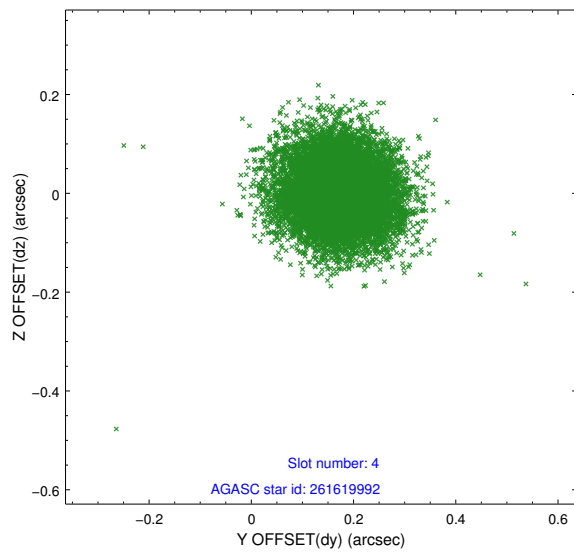
slot	status	id	mag	n_pts	med_dy	med_dz	dr1	dr2	ra	dec	mean_y	mean_z
0	FID	HRC-S-1	6.99	4922	0.105	-0.191	0.007	0.011	0.000000	0.000000	-1160.38	-458.96
1	FID	HRC-S-3	7.00	4921	0.138	-0.017	0.010	0.017	0.000000	0.000000	-1163.30	570.65
2	FID	HRC-S-4	6.95	4921	0.144	-0.089	0.008	0.014	0.000000	0.000000	1237.69	573.34
3	GUIDE	261619776	8.80	9842	-0.084	-0.114	0.082	0.128	198.654383	29.401174	-720.88	-1508.13
4	GUIDE	261619992	9.33	9841	0.172	0.002	0.088	0.142	198.395553	28.647634	2099.46	-1771.93
5	GUIDE	261623040	9.12	9840	-0.171	0.001	0.078	0.127	198.792686	29.757643	-2064.65	-1339.36
6	GUIDE	261623624	9.13	9763	0.150	0.126	0.076	0.123	199.611555	28.454113	2007.91	2135.05
7	GUIDE	261629720	8.10	9844	-0.066	-0.017	0.062	0.100	199.236176	29.044452	170.28	540.48

2.4 Star Slots

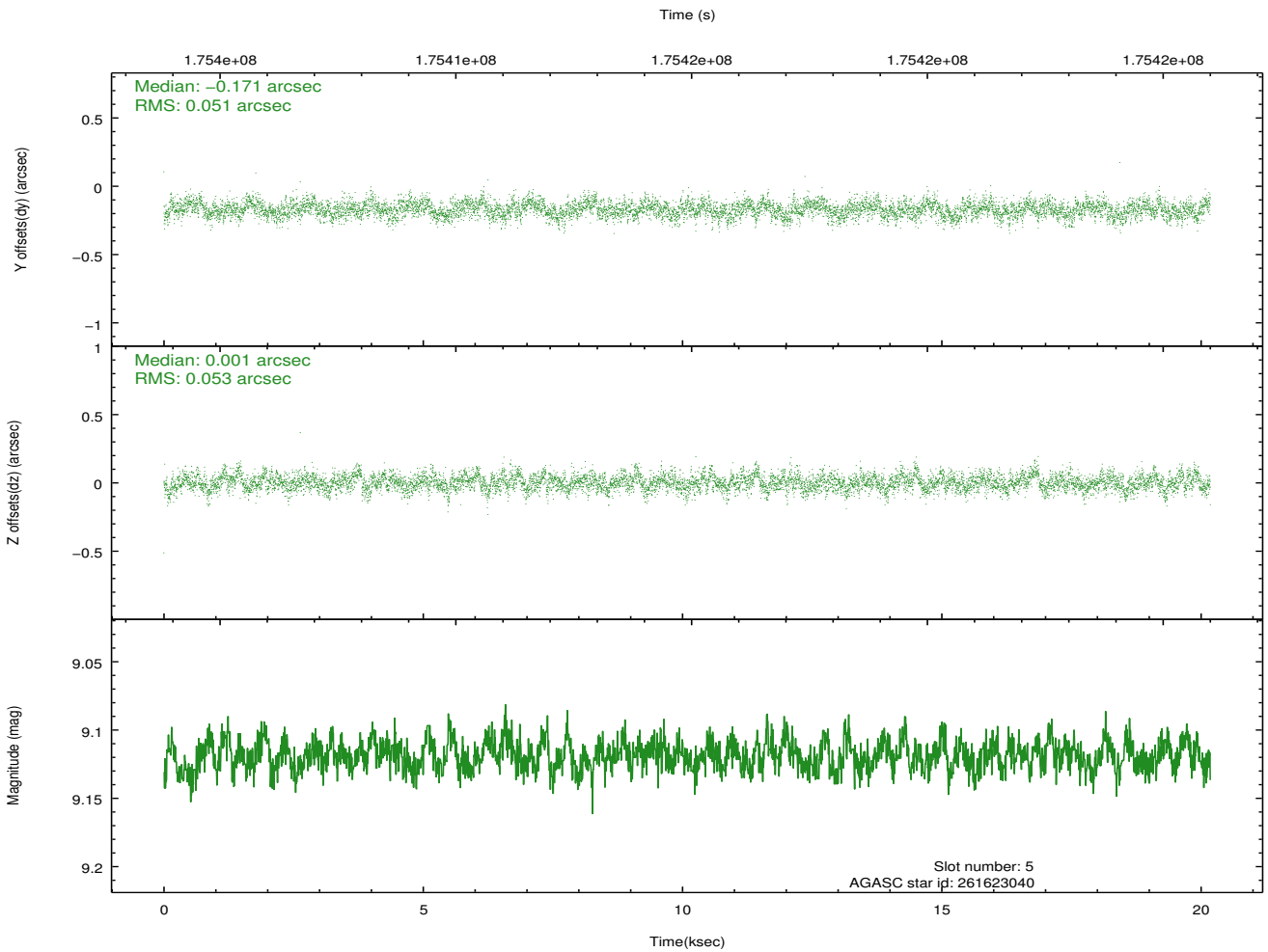
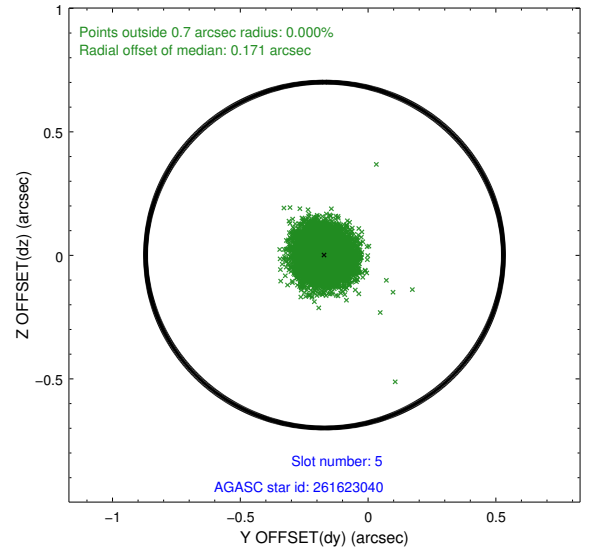
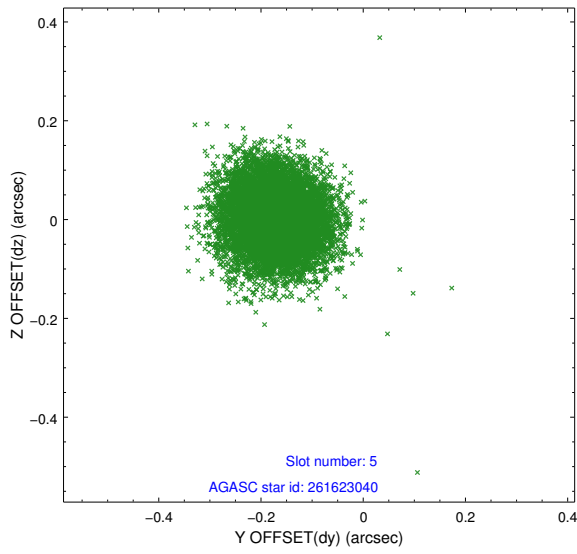
2.4.1 Slot 3



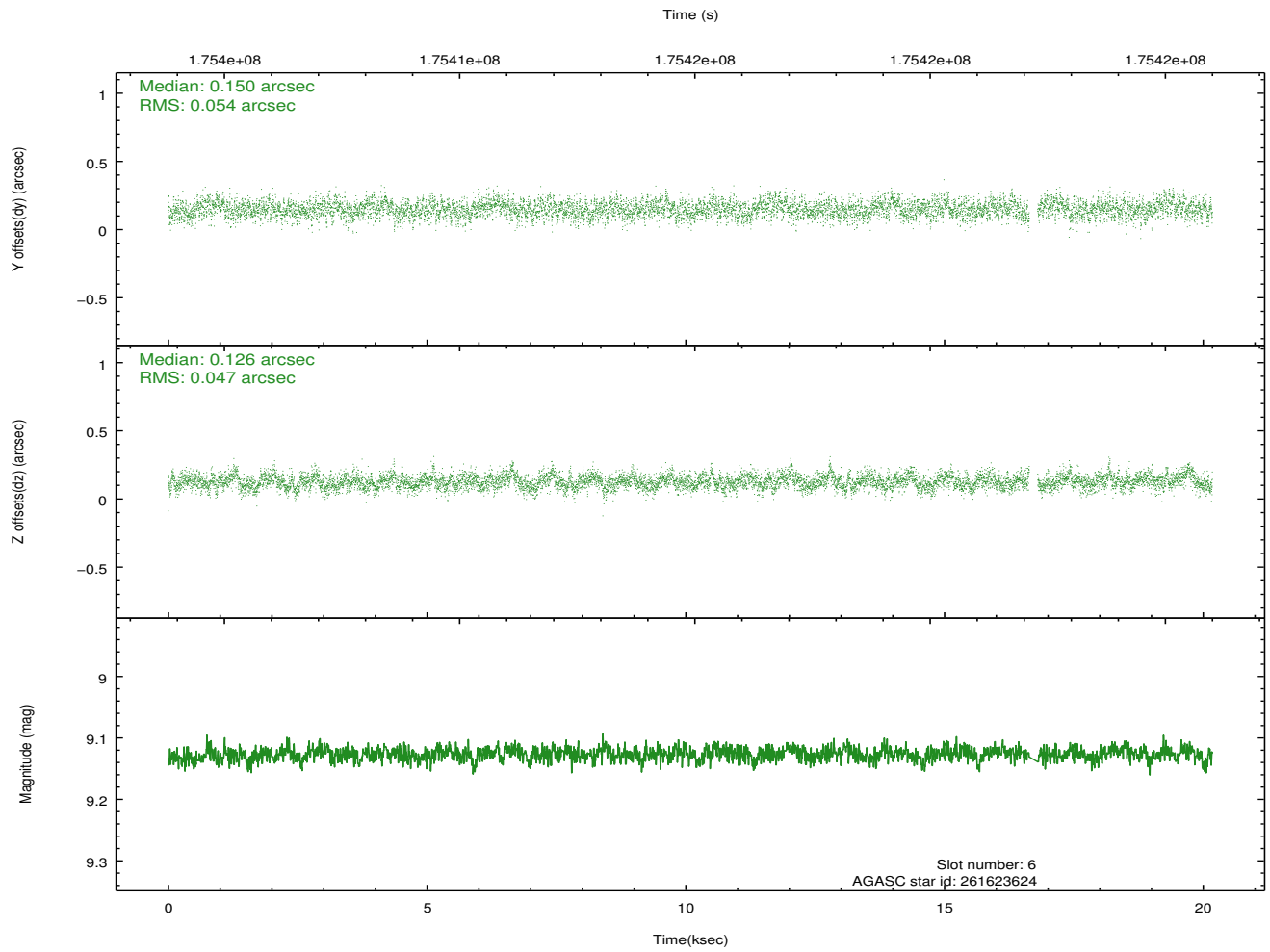
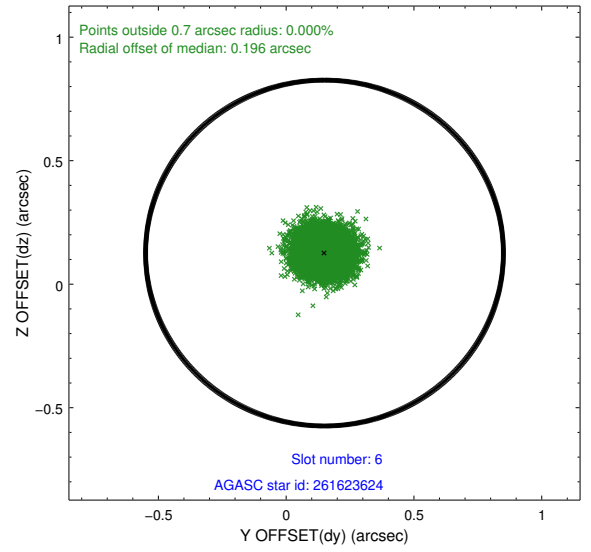
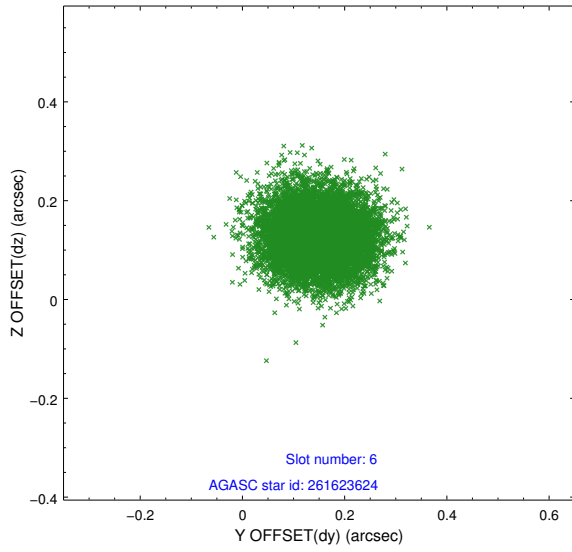
2.4.2 Slot 4



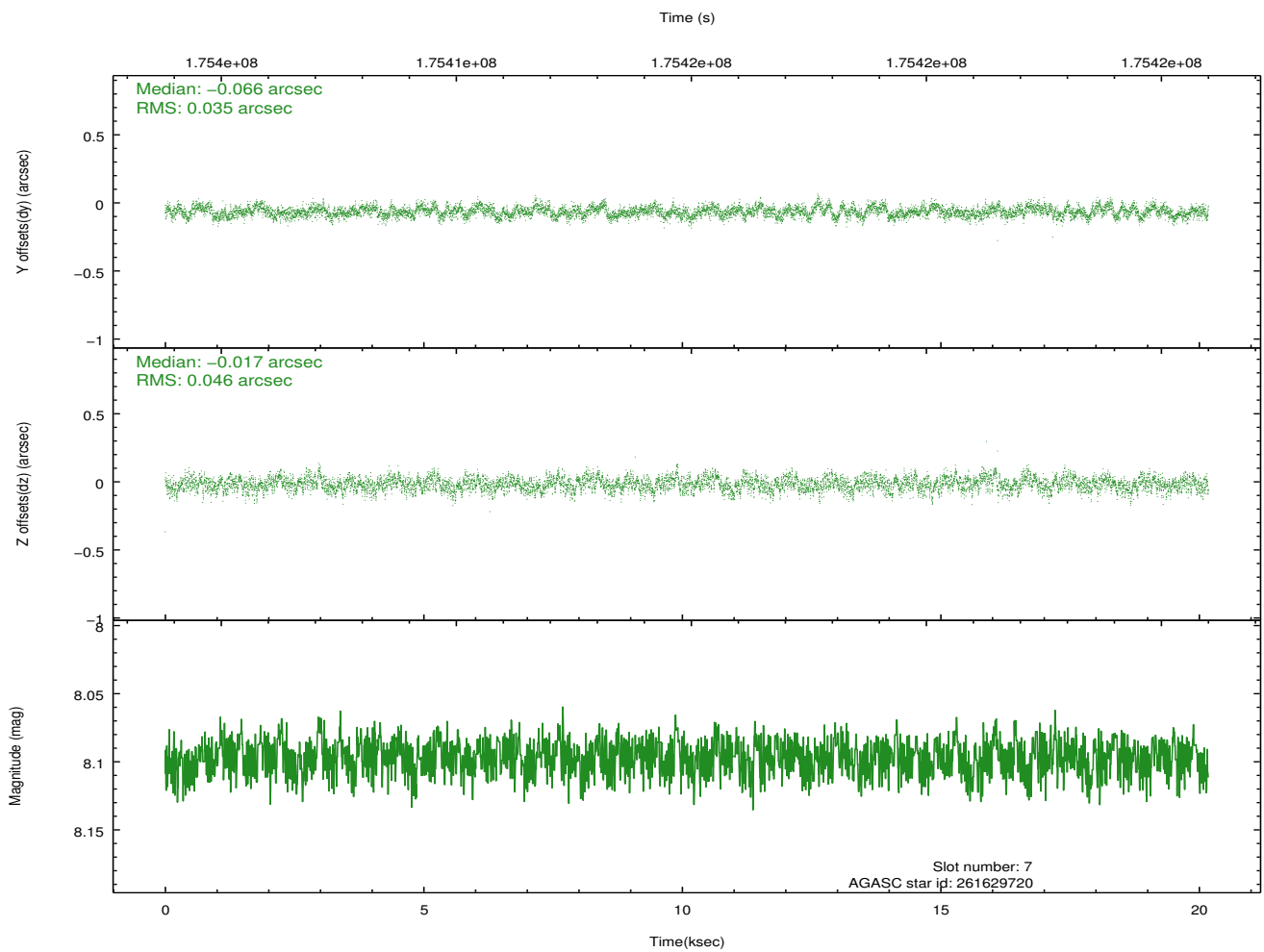
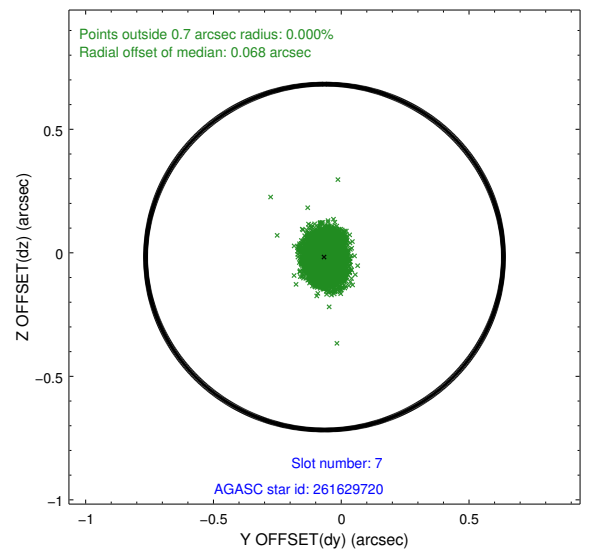
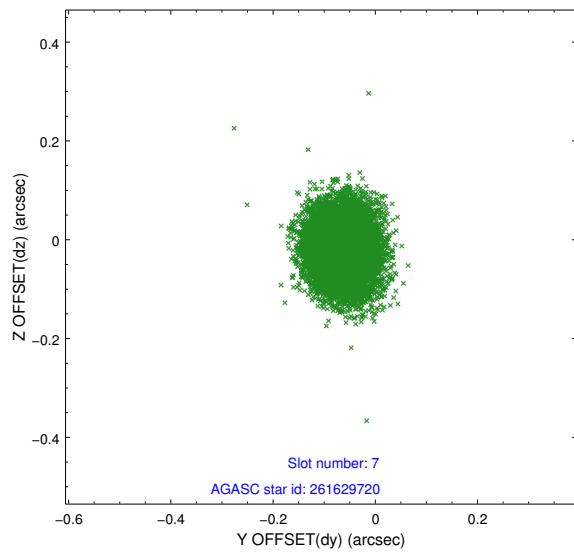
2.4.3 Slot 5



2.4.4 Slot 6

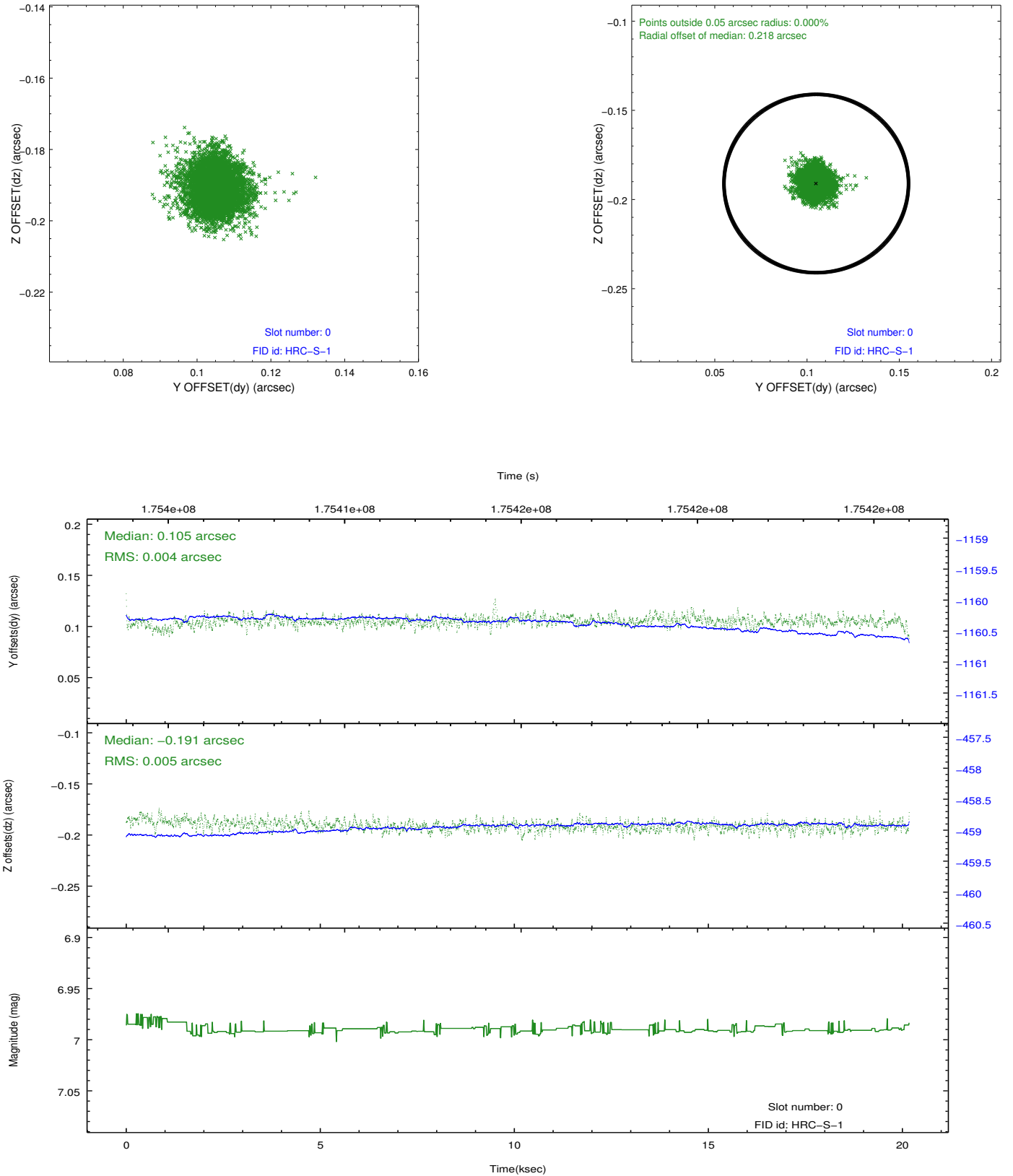


2.4.5 Slot 7

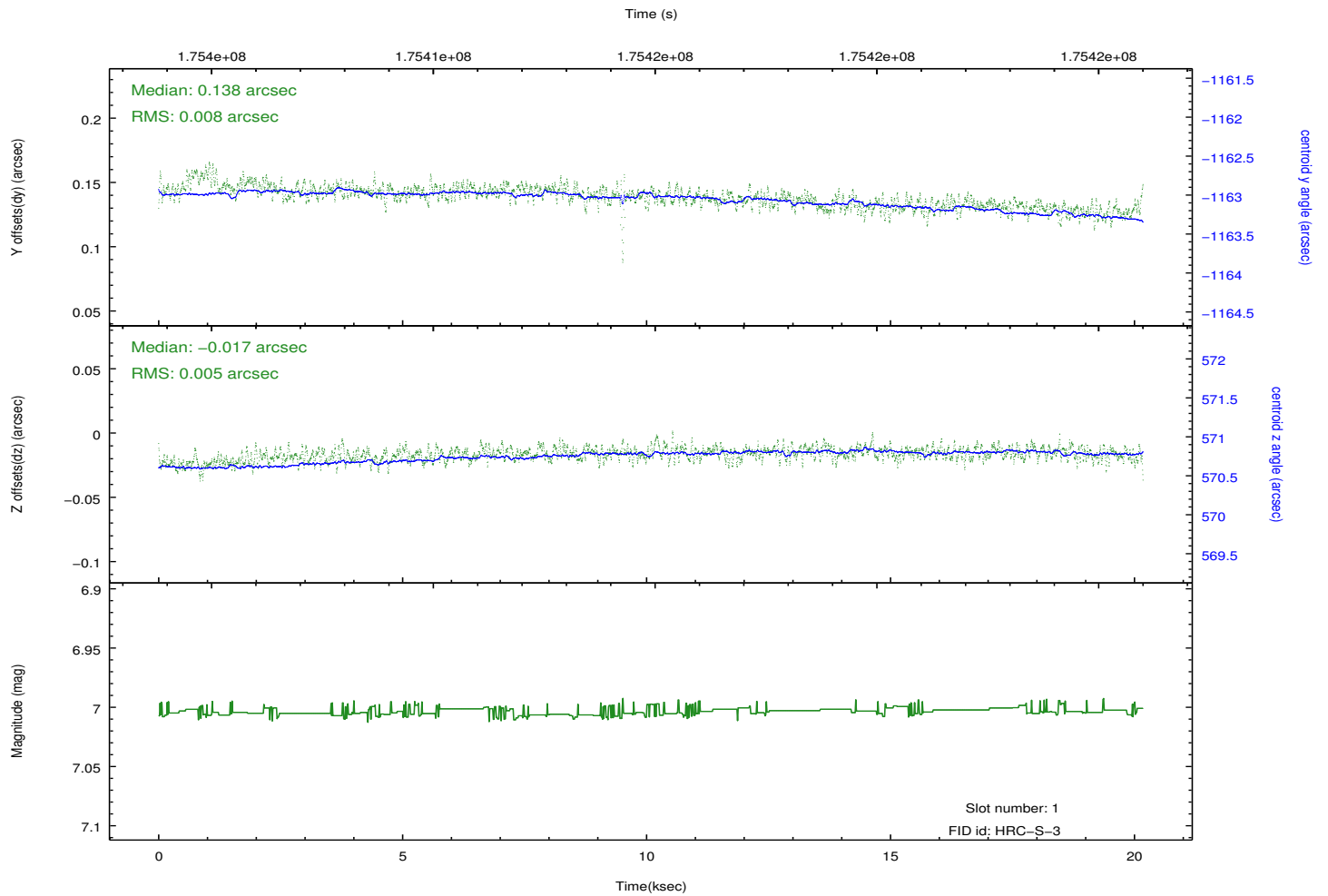
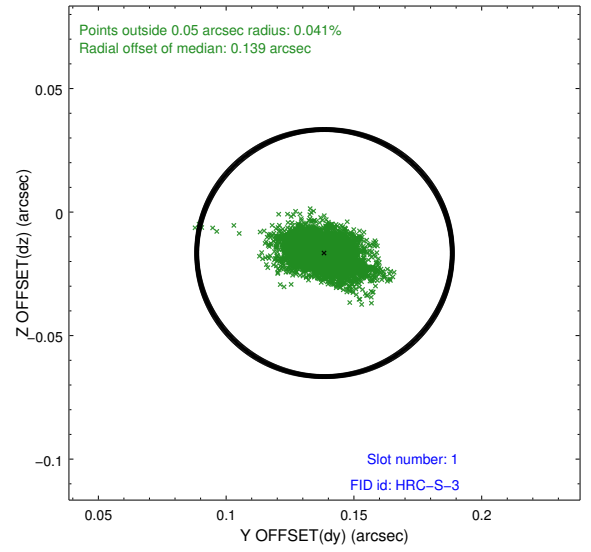
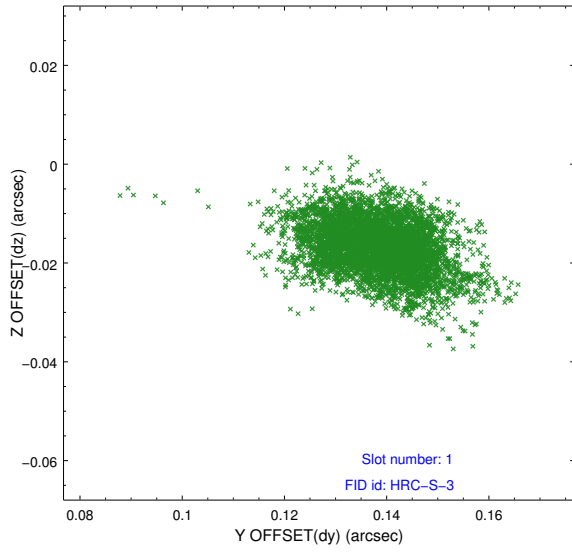


2.5 FID Slots

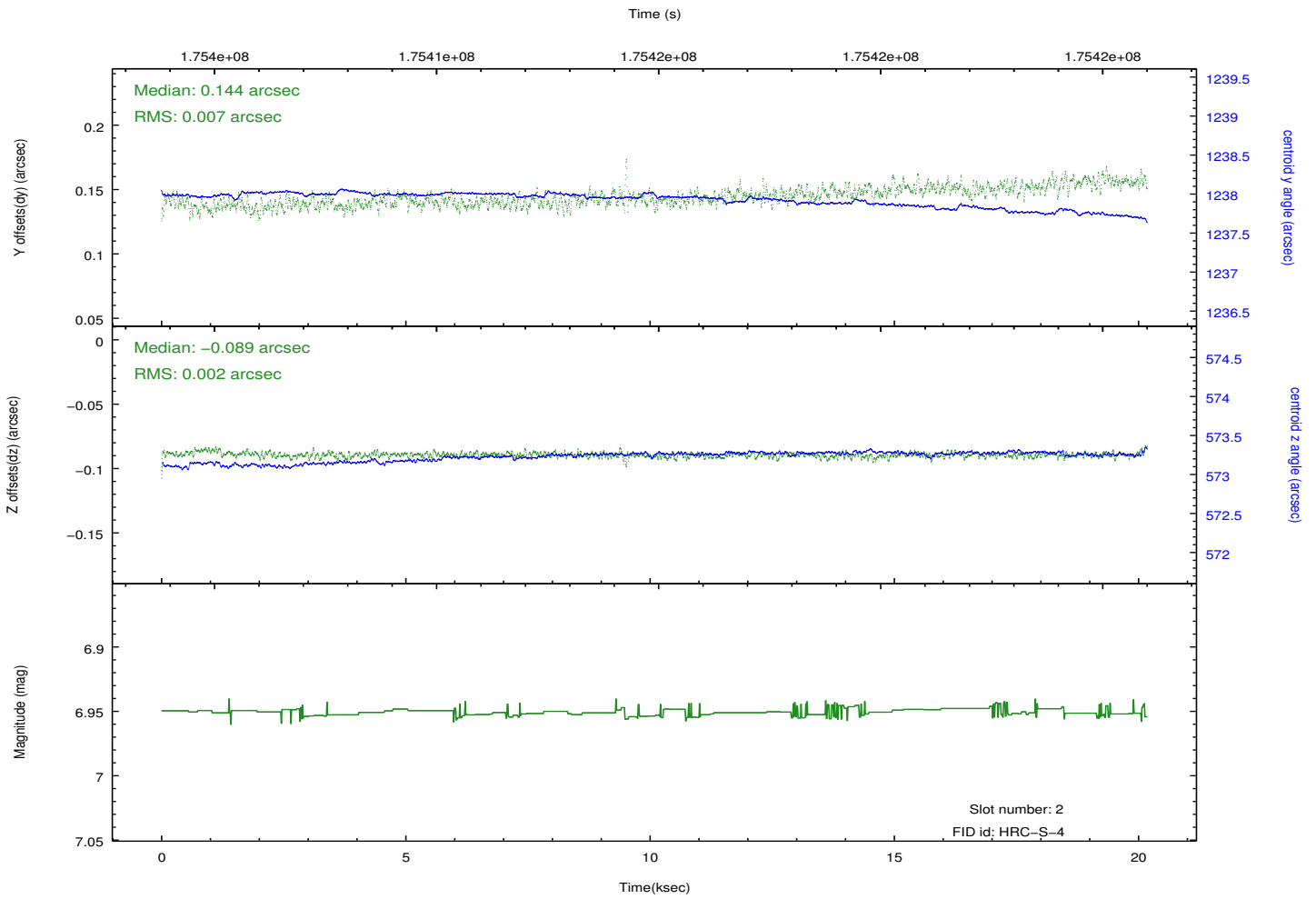
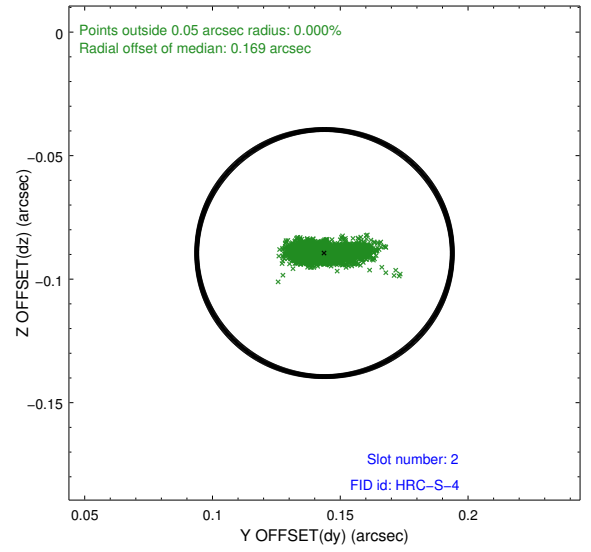
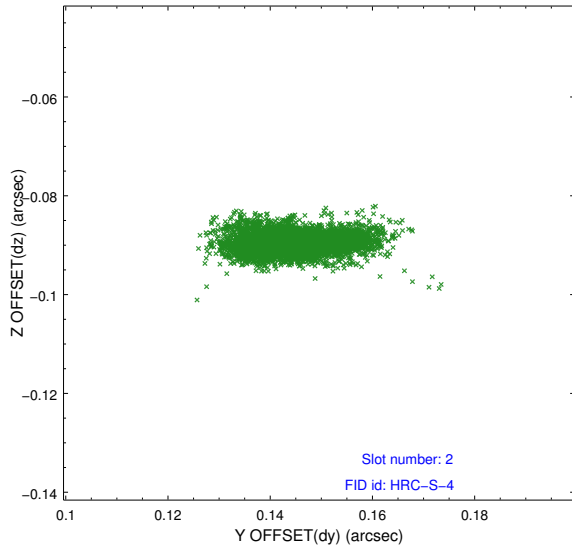
2.5.1 Slot 0



2.5.2 Slot 1

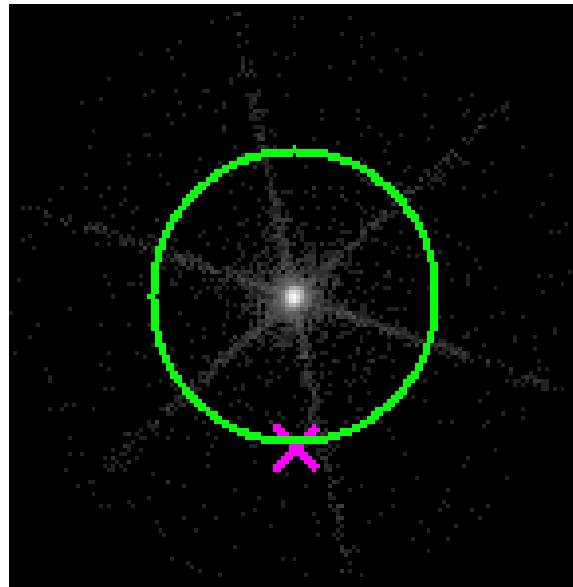


2.5.3 Slot 2



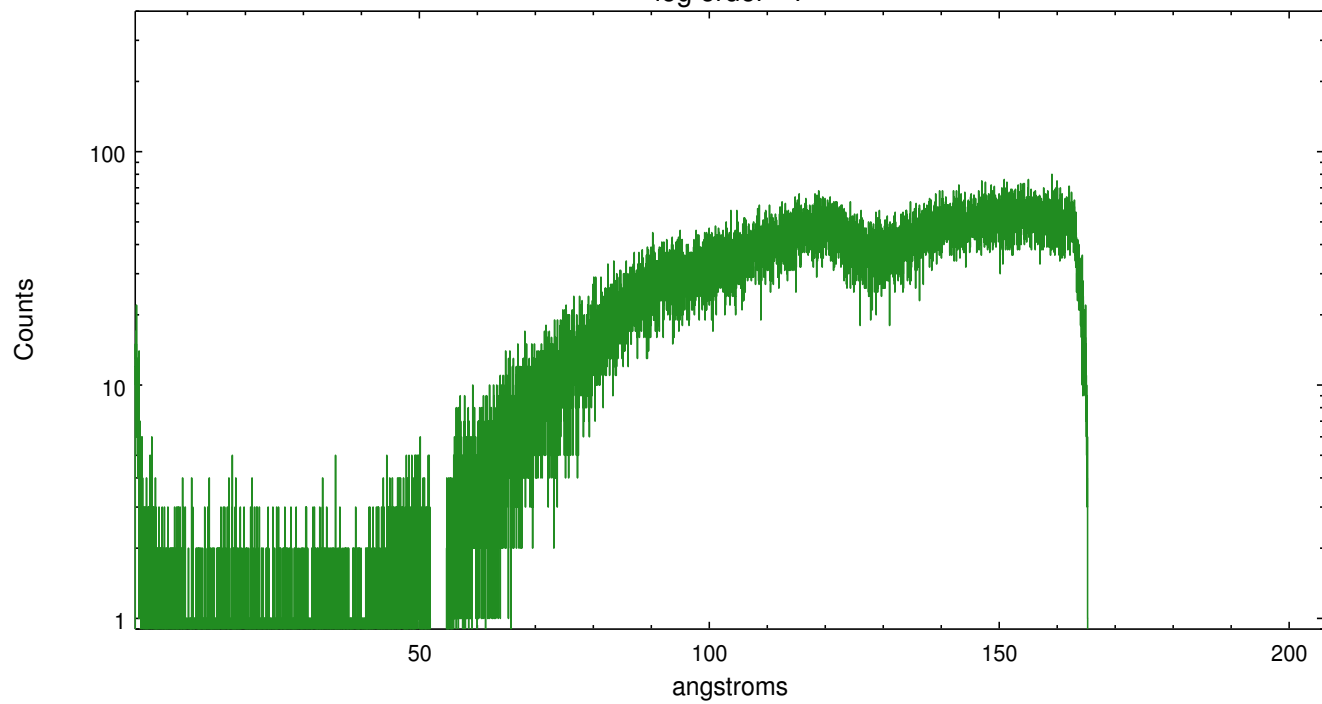
3 Gratings

3.1 LETG Arm

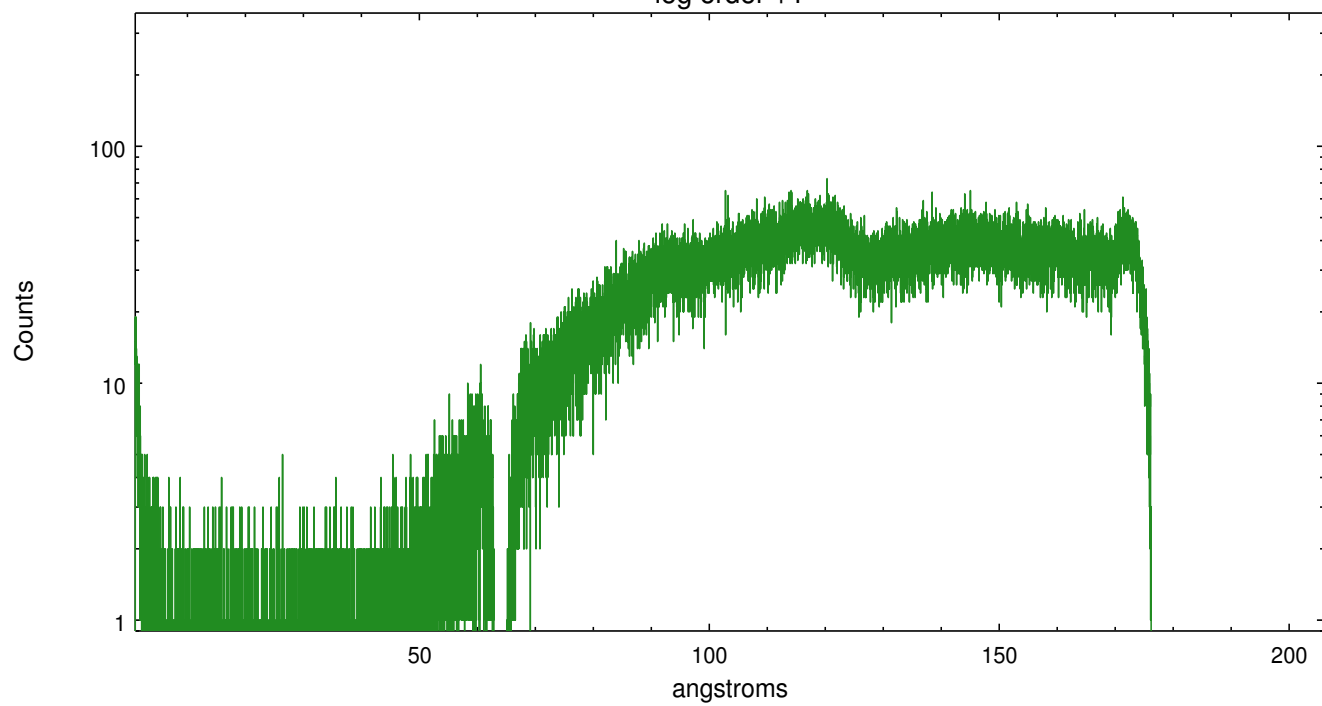


LETG Zero Order

leg order -1



leg order +1



A Summary

A.1 Status

V&V Scientist	Joy Nichols
V&V Date (YYYY-MM-DD)	2012.12.13
V&V Edition	1
V&V Disposition and Status	OK
V&V Charge Time	20.179

A.2 Comments