

V&V Reference Report

L2 ASCDS Version : 8.4.5

Observation 3707 - L2 Version 3
Chandra X-Ray Center

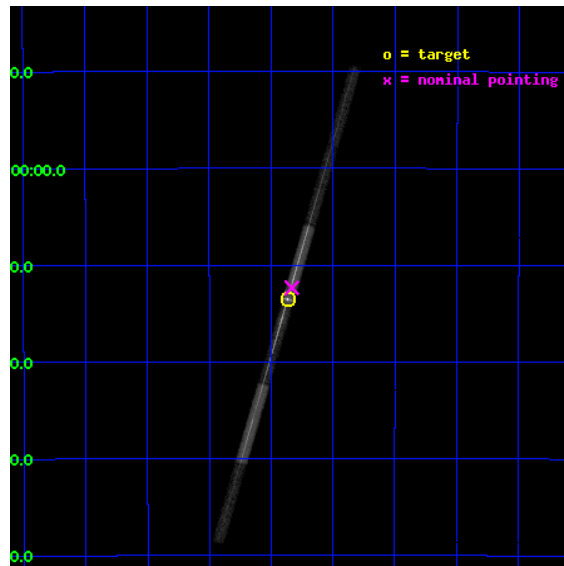
L2 Processing Date : Oct 18 2012

Contents

1	Front	2
2	OBI	3
2.1	OBI	3
2.1.1	Images	3
2.1.2	Bias	3
2.1.3	Parameters	4
2.1.4	Events	4
2.2	Compared Parameters	5
2.3	Aspect	6
2.4	Star Slots	9
2.4.1	Slot 3	9
2.4.2	Slot 4	10
2.4.3	Slot 5	11
2.4.4	Slot 6	12
2.4.5	Slot 7	13
2.5	FID Slots	14
2.5.1	Slot 0	14
2.5.2	Slot 1	15
2.5.3	Slot 2	16
3	Gratings	17
3.1	LETG Arm	17
A	Summary	19
A.1	Status	19
A.2	Comments	19

1 Front

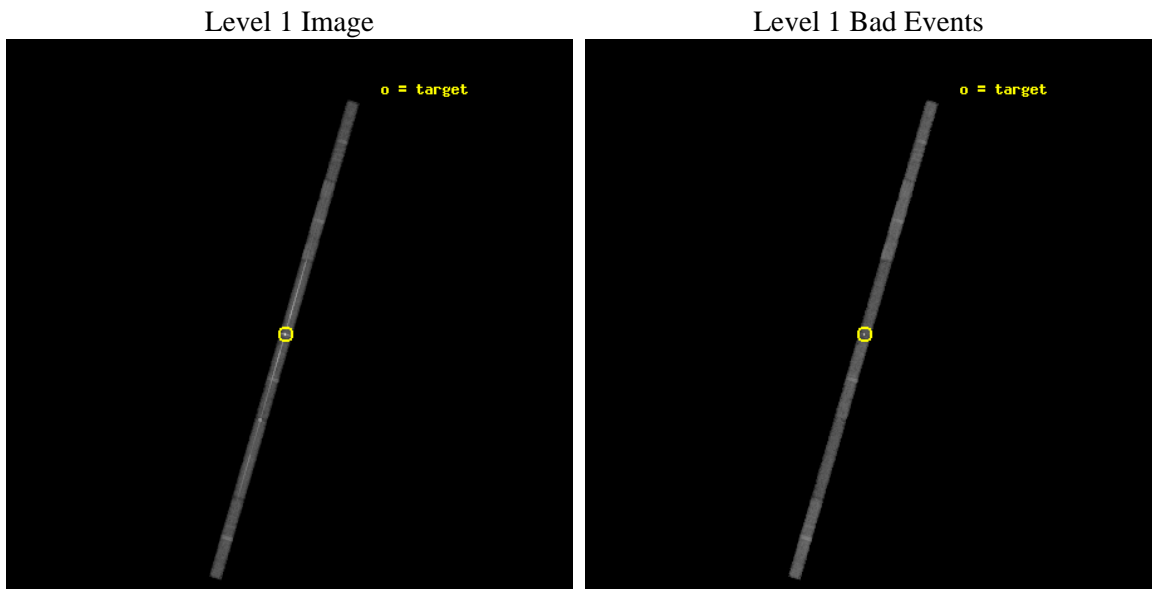
seq_num	790083	Sequence number
obs_id	3707	Observation id
title	AO4 CALIBRATION OBSERVATIONS OF PKS2155-304	Proposal title
observer	Dr. CXC Calibration	Principal investigator
object	PKS2155-304	Source name
dtycle	0	
cycle	P	events from which exps? Prim/Second/Both
ra_targ	329.716667	Observer's specified target RA [deg]
dec_targ	-30.225556	Observer's specified target Dec [deg]
ra_nom	329.70807676359	Nominal RA [deg]
dec_nom	-30.20589985824	Nominal Dec [deg]
roll_nom	286.30666479599	Nominal Roll [deg]
revision	3	Processing version of data
ontime	28512.295368582	Sum of GTIs [s]
lvetime	26933.23809512	Livetime [s]
ontime4	28512.336408585	Sum of GTIs [s]
ontime5	28512.254328579	Sum of GTIs [s]
ontime6	28512.213288575	Sum of GTIs [s]
ontime7	28512.295368582	Sum of GTIs [s]
ontime8	28512.172248572	Sum of GTIs [s]
ontime9	28512.131208599	Sum of GTIs [s]
l2events	132140	Number of level 2 events



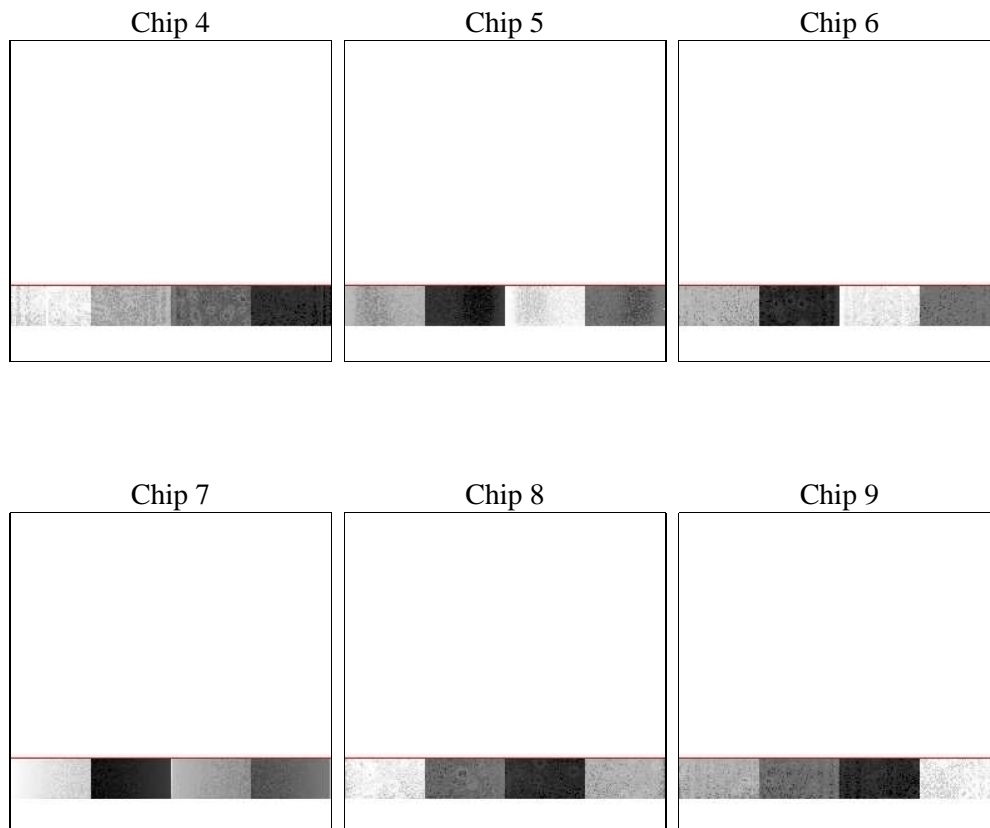
2 OBI

2.1 OBI

2.1.1 Images



2.1.2 Bias



2.1.3 Parameters

obi_num	1	Obi number	sched_exp_time	28000.000000	[s] Scheduled observation exposure time
ascdsver	8.4.5	Processing system revision	ontime	28512.295368582	Sum of GTIs [s]
caldbver	4.5.2	 	ontime4	28512.336408585	Sum of GTIs [s]
date	2012-10-18T11:33:15	Date and time of file creation	ontime5	28512.254328579	Sum of GTIs [s]
revision	3	Processing version of data	ontime6	28512.213288575	Sum of GTIs [s]
			ontime7	28512.295368582	Sum of GTIs [s]
			ontime8	28512.172248572	Sum of GTIs [s]
			ontime9	28512.131208599	Sum of GTIs [s]
			l1events	306296	Number of level 1 events

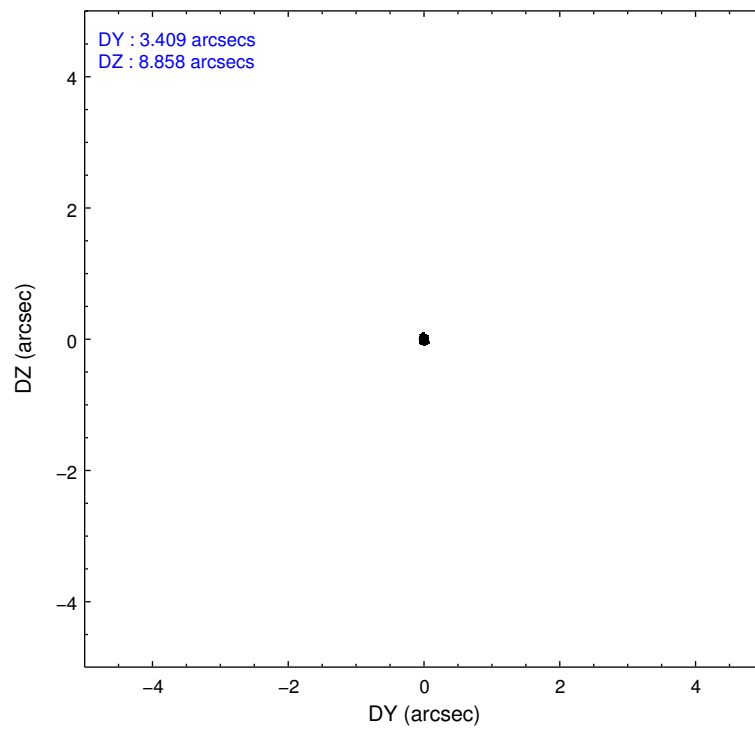
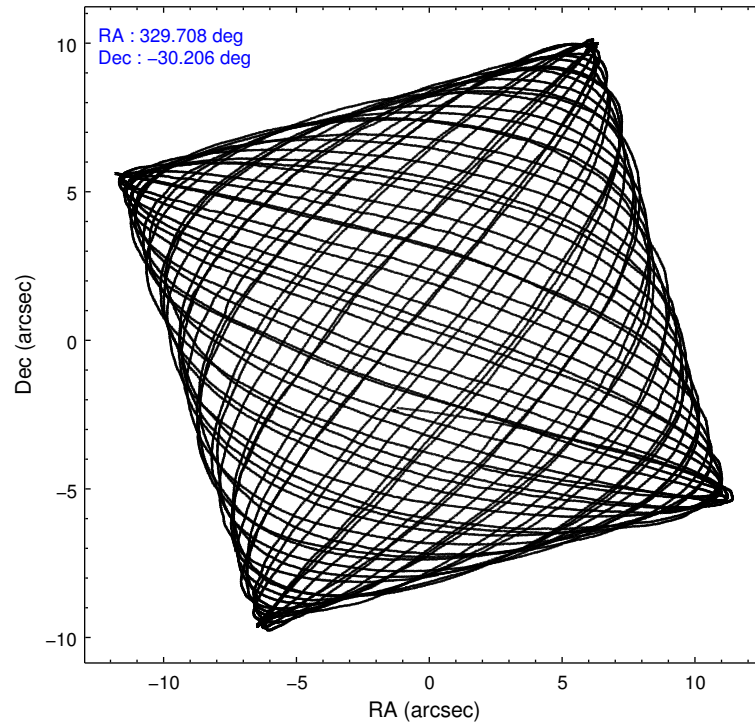
2.1.4 Events

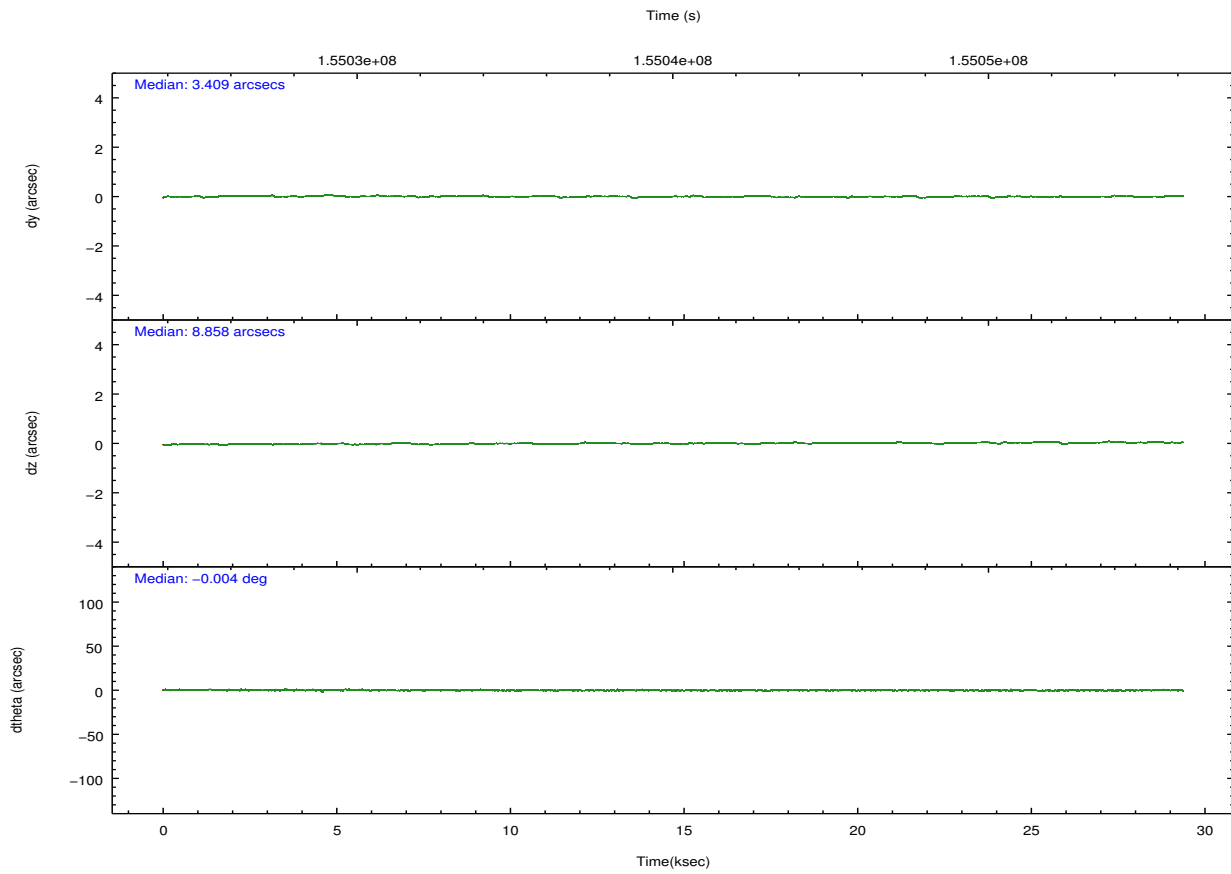
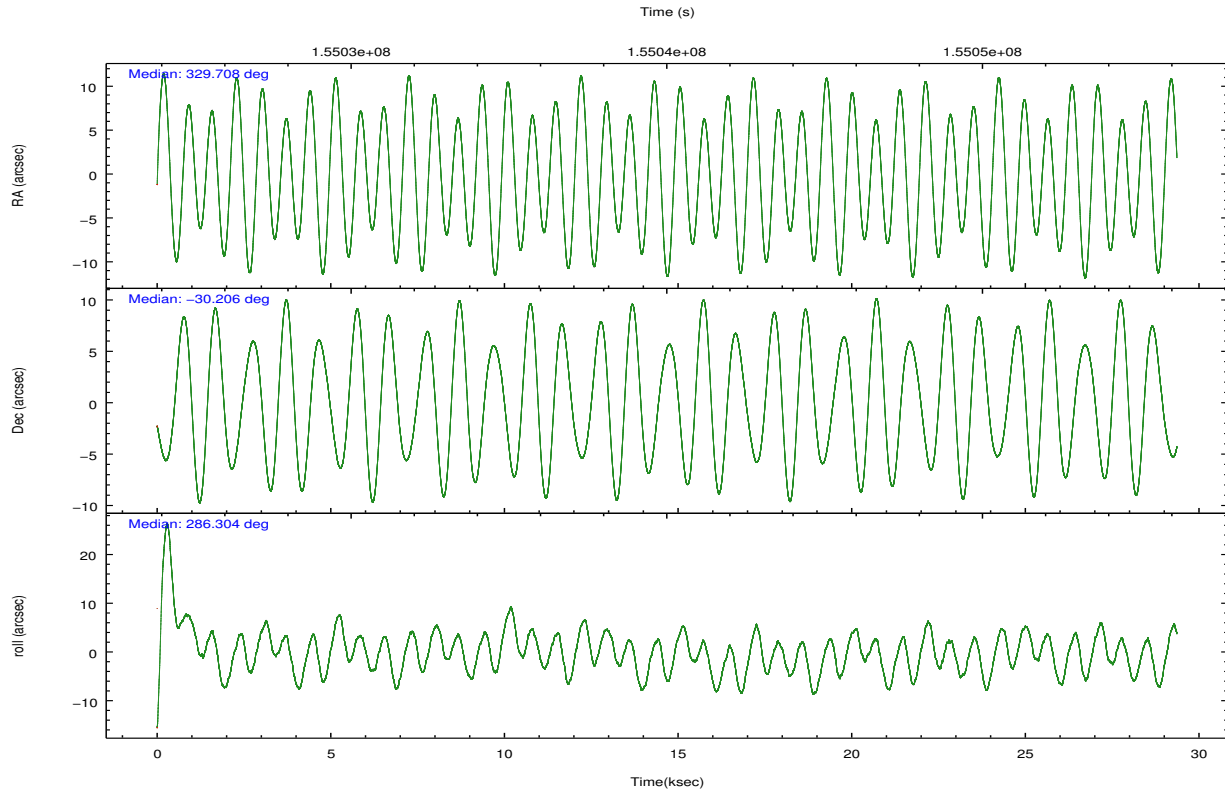
	ccd 4	ccd 5	ccd 6	ccd 7	ccd 8	ccd 9		ccd 4	ccd 5	ccd 6	ccd 7	ccd 8	ccd 9
level 1 events	35595	44478	48999	102359	45576	29289	grade 0 events	1829	9358	17324	20513	3913	1794
rejected events	31304	17747	26224	25717	35495	25195		5%	21%	35%	20%	8%	6%
rejected %	87%	39%	53%	25%	77%	86%	grade 1 events	8	145	27	952	17	10
								0%	0%	0%	0%	0%	0%
							grade 2 events	695	5441	2384	18270	1601	602
								1%	12%	4%	17%	3%	2%
							grade 3 events	597	1900	1101	8838	1066	604
								1%	4%	2%	8%	2%	2%
							grade 4 events	580	2009	1083	8512	1066	573
								1%	4%	2%	8%	2%	1%
							grade 5 events	904	3041	952	6196	1243	930
								2%	6%	1%	6%	2%	3%
							grade 6 events	590	8023	883	20513	2435	521
								1%	18%	1%	20%	5%	1%
							grade 7 events	30392	14561	25245	18565	34235	24255
								85%	32%	51%	18%	75%	82%

2.2 Compared Parameters

Parameter	Planned	Actual	Parameter	Planned	Actual
Instrument	ACIS	ACIS	Obspar format version number	7	7
Detector	ACIS-456789	ACIS-456789	Obspar file type	PREDICTED	ACTUAL
Grating	LETG	LETG	Obspar update status	NONE	UPDATED
Data mode	FAINT	FAINT	Number of optional ACIS chips dropped	0	0
Observation mode	POINTING	POINTING	On-chip summing requested	N	N
[deg] Pointing RA	329.684981	329.7080767635896	Subarray requested	CUSTOM	1/8
[deg] Pointing Dec	-30.187327	-30.20589985824022	Subarray start row	113	113
[deg] Pointing Roll	286.138427	286.3066647959874	Subarray row count	128	128
[mm] SIM focus pos	-0.684267	-0.6828225247311905	Alternating exposures requested	N	N
[mm] SIM defocus	0	0.001444936568705701	[s] Primary exposure time	0.000000	0.7
[mm] SIM translation stage pos	-182.132523	-182.1370004450064			
[mm] SIM translation stage offset	-8	-7.995522138001405			
[s] Observation start time (MET)	155026694.184000	155024817.66536			
Observation start date	2002-11-30T06:57:10	2002-11-30T06:26:57			
[s] Observation end time (MET)	155054694.184000	155054908.59161			
Observation end date	2002-11-30T14:43:50	2002-11-30T14:48:28			
Read mode	TIMED	TIMED			

2.3 Aspect



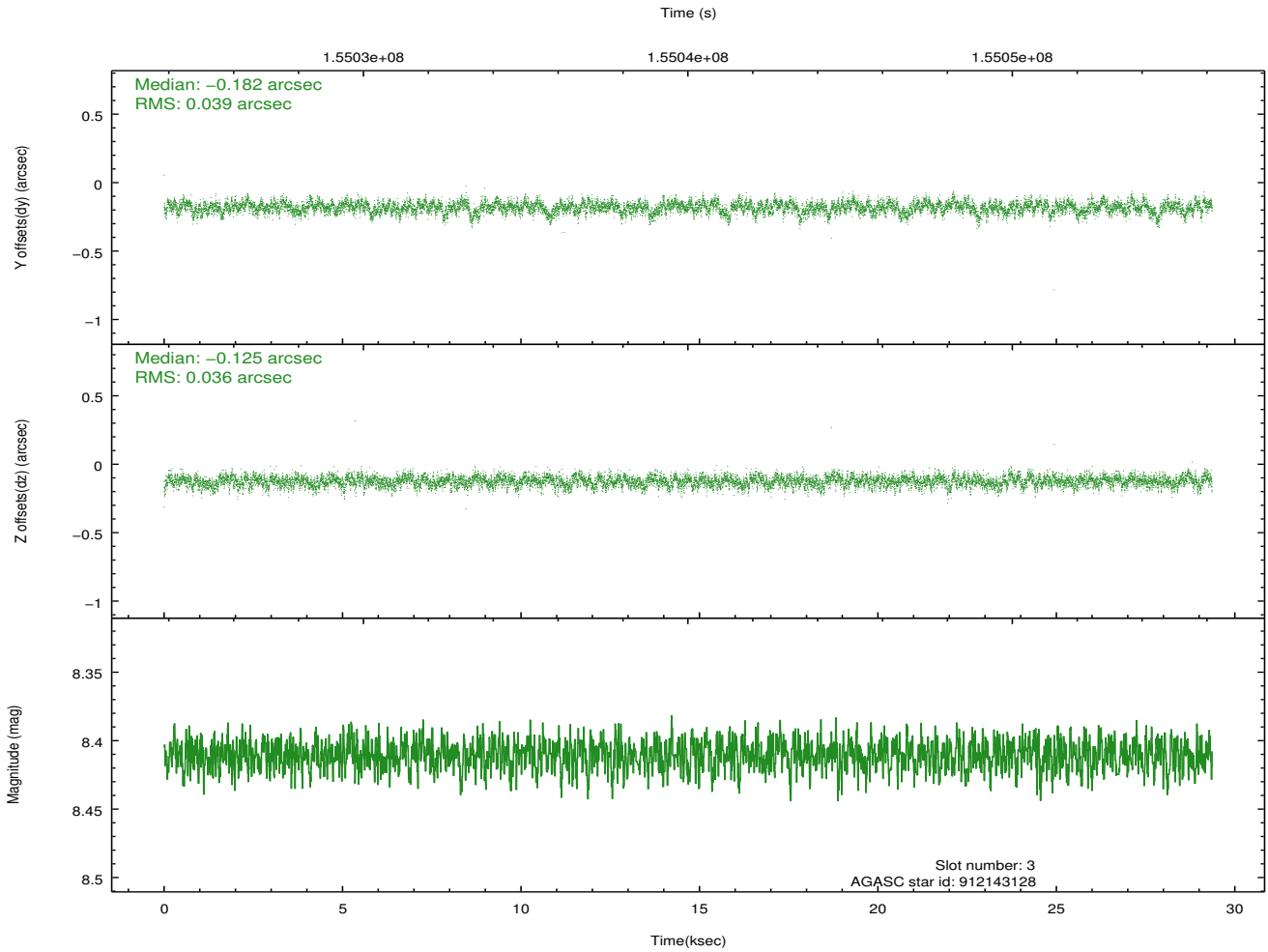
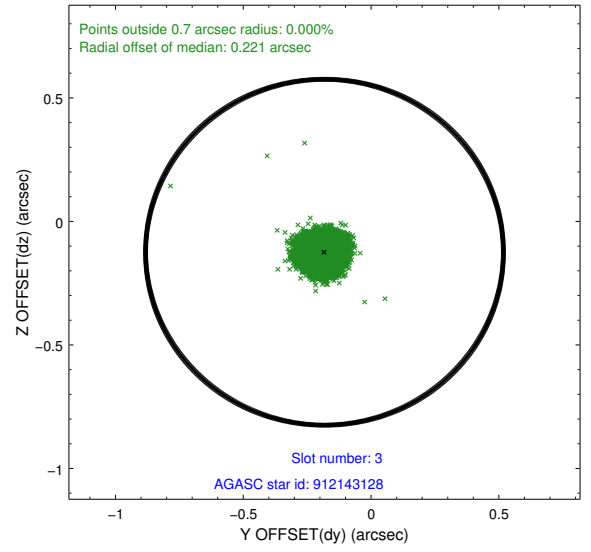
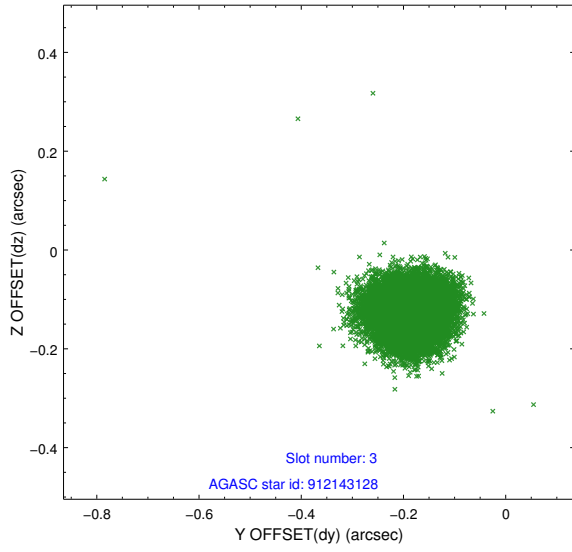


Slot Statistics

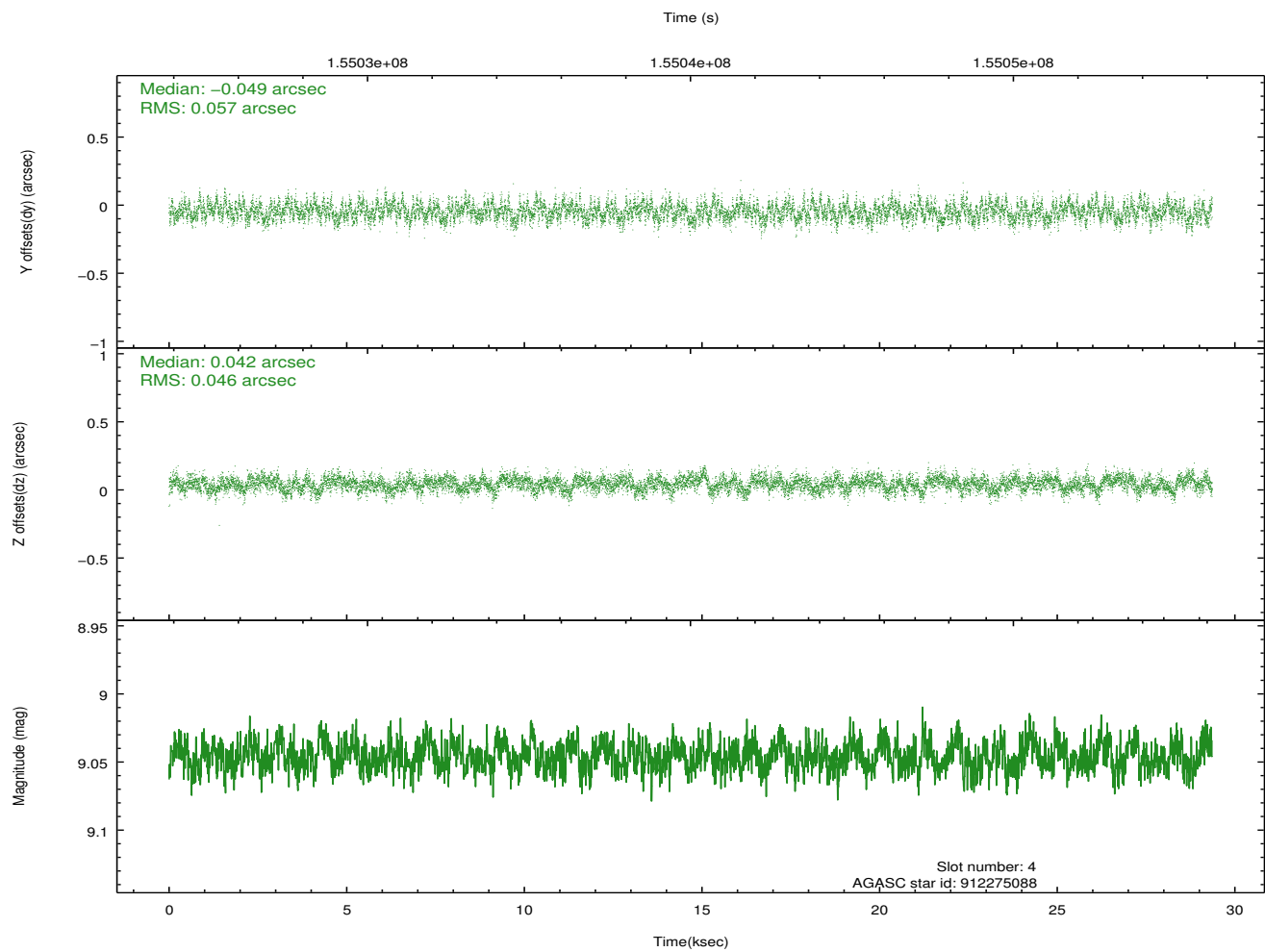
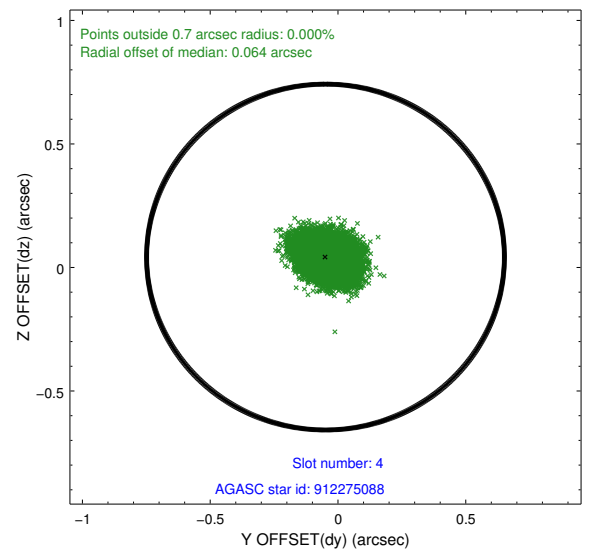
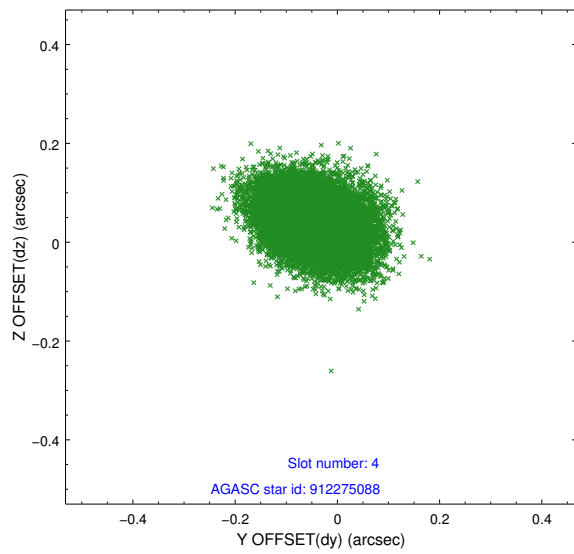
slot	status	id	mag	n_pts	med_dy	med_dz	dr1	dr2	ra	dec	mean_y	mean_z
0	FID	ACIS-S-2	7.09	7163	-0.044	-0.100	0.007	0.012	0.000000	0.000000	-755.52	-1894.89
1	FID	ACIS-S-4	7.18	7163	0.070	0.048	0.006	0.012	0.000000	0.000000	2157.82	13.64
2	FID	ACIS-S-5	7.23	7163	-0.057	0.060	0.007	0.011	0.000000	0.000000	-1808.28	7.39
3	GUIDE	912143128	8.41	14318	-0.182	-0.125	0.056	0.091	328.924992	-29.706140	-2316.22	-1803.54
4	GUIDE	912275088	9.05	14319	-0.049	0.042	0.077	0.127	329.619228	-29.738698	-1608.36	251.51
5	GUIDE	981468016	9.01	14323	0.030	-0.077	0.109	0.174	328.842457	-30.034984	-1247.01	-2372.49
6	GUIDE	981468128	9.36	14321	0.130	0.036	0.103	0.167	329.756350	-30.158334	-38.00	242.50
7	GUIDE	981478152	9.41	14317	0.069	0.130	0.103	0.170	329.415589	-30.057192	-681.93	-676.07

2.4 Star Slots

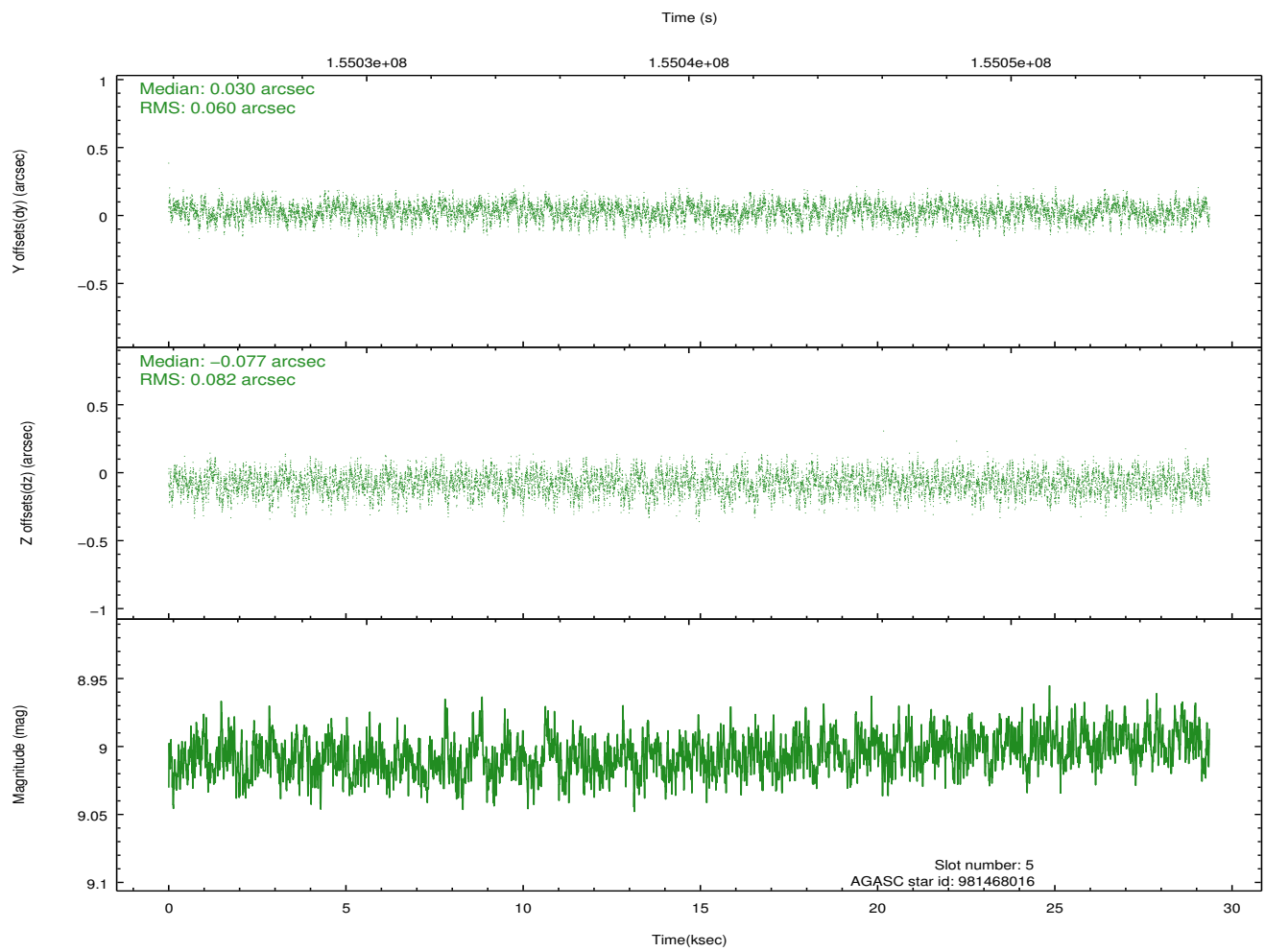
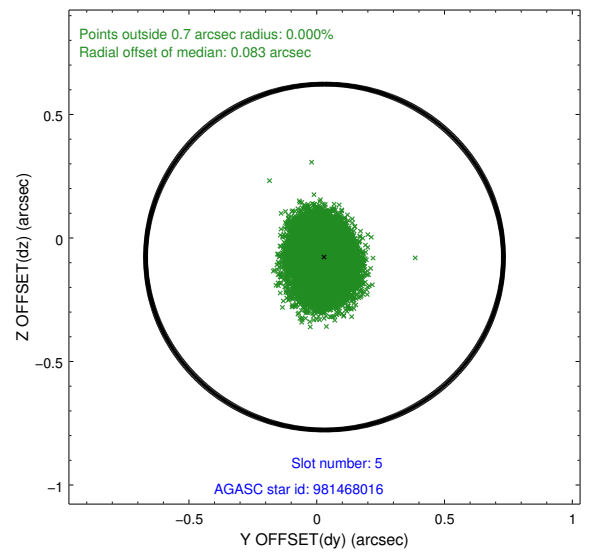
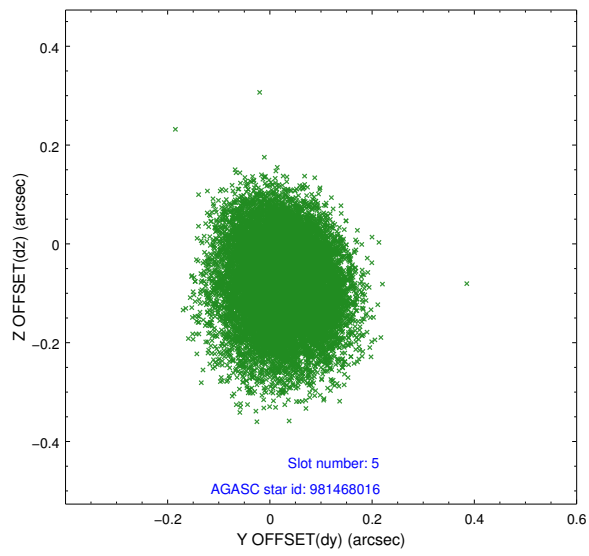
2.4.1 Slot 3



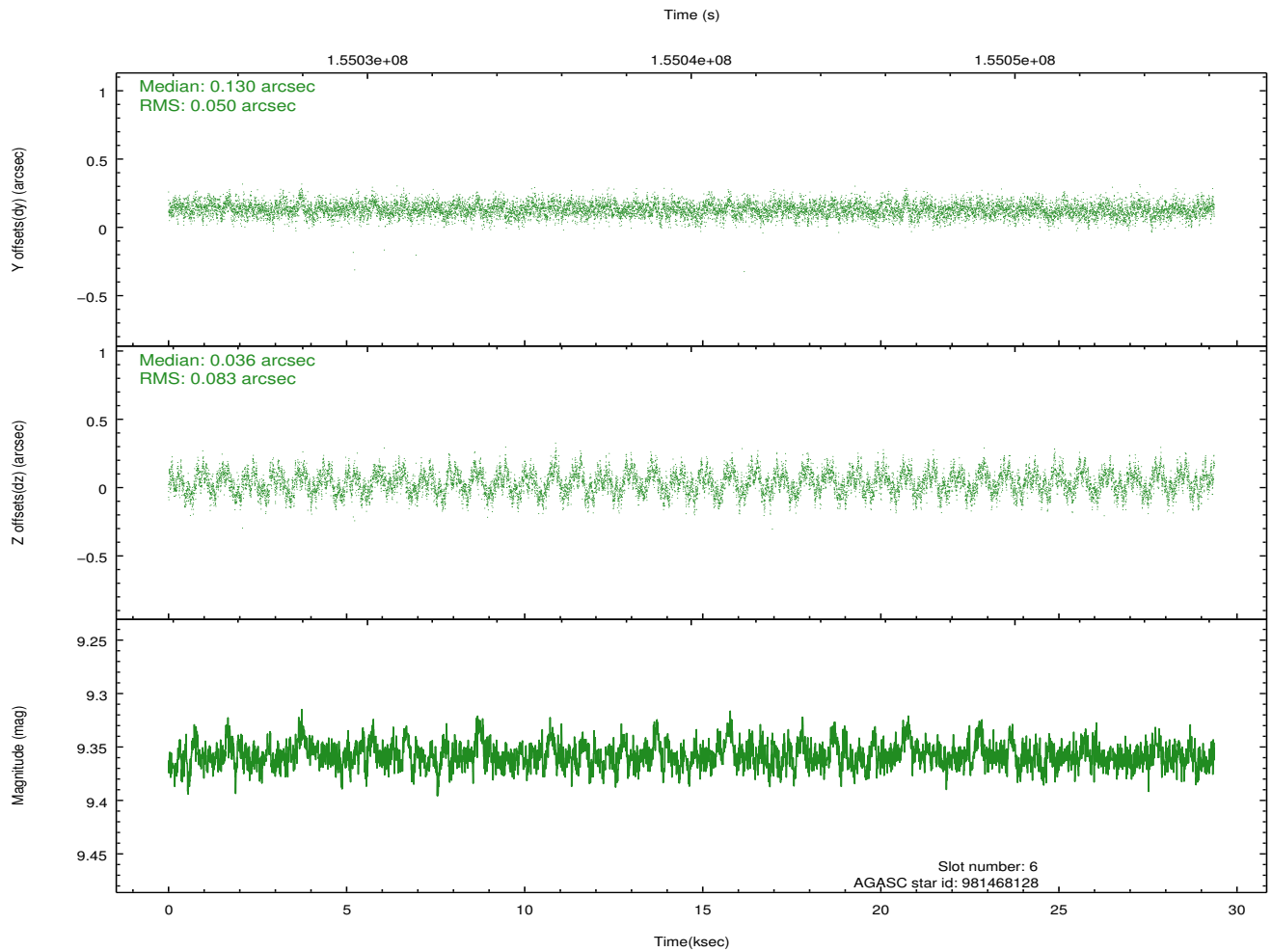
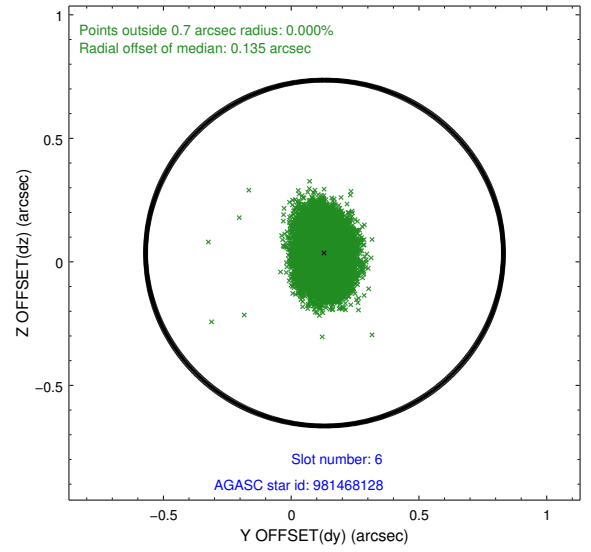
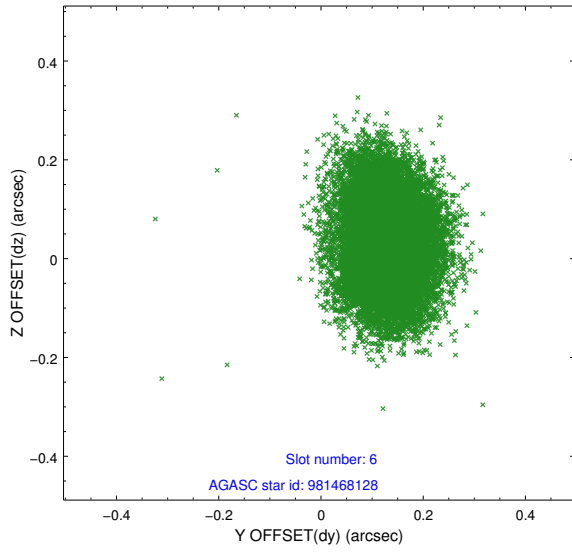
2.4.2 Slot 4



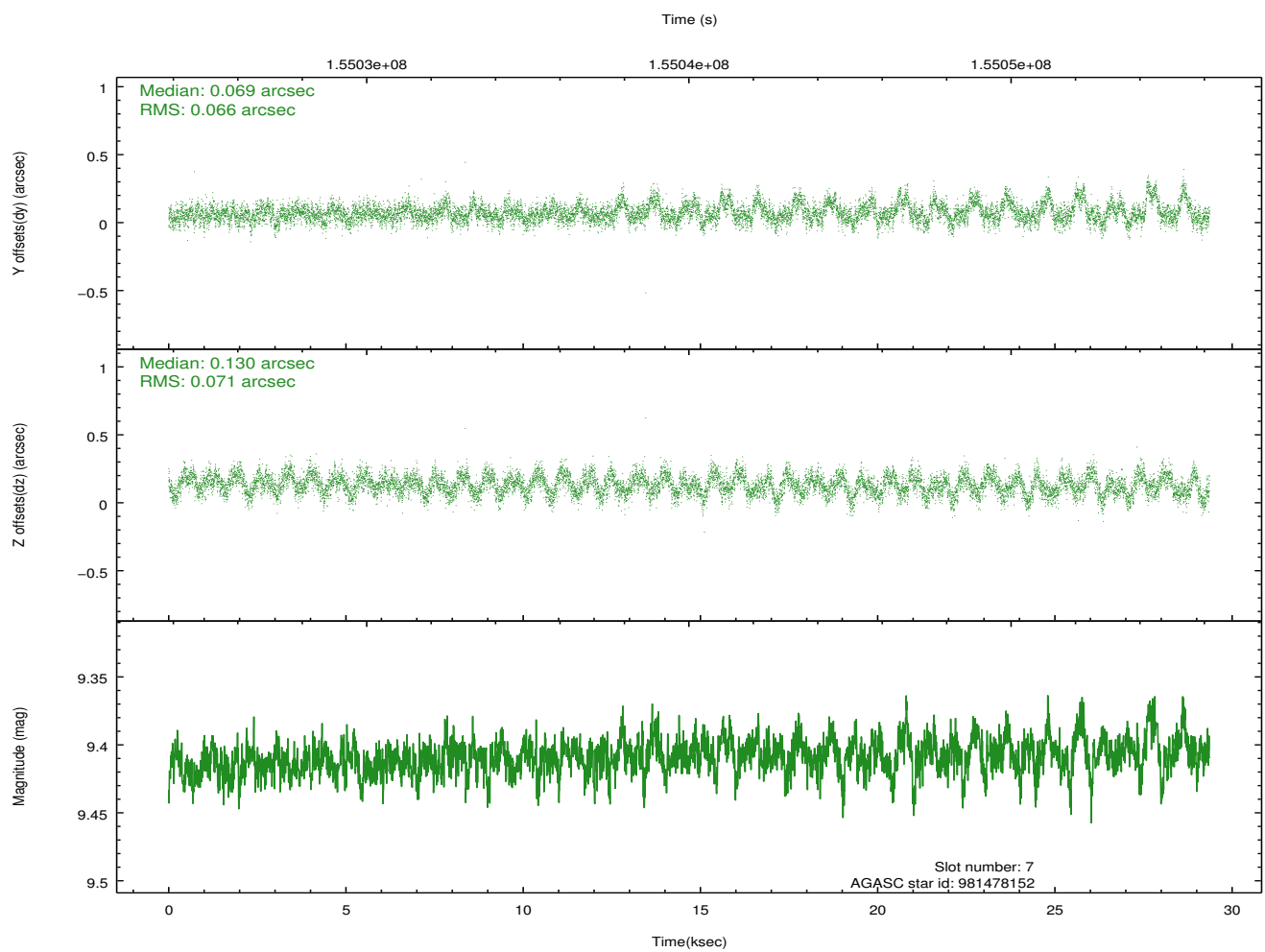
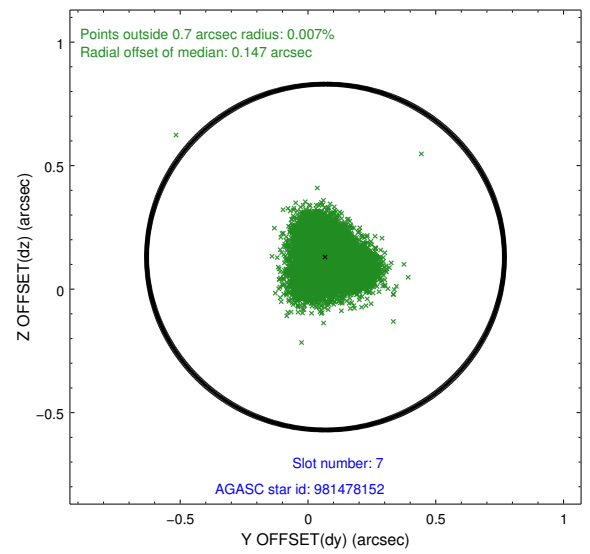
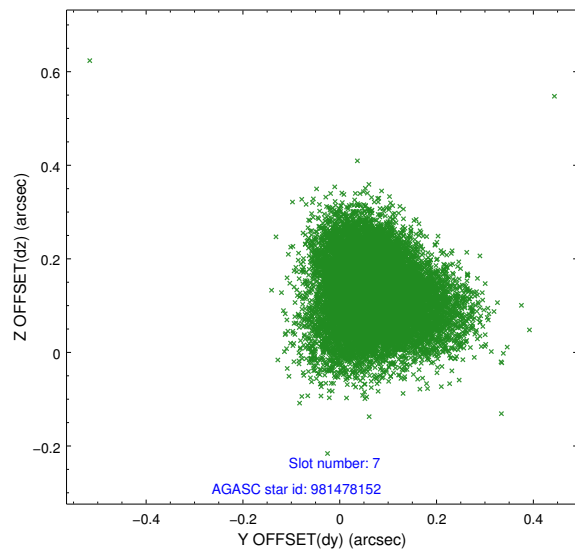
2.4.3 Slot 5



2.4.4 Slot 6

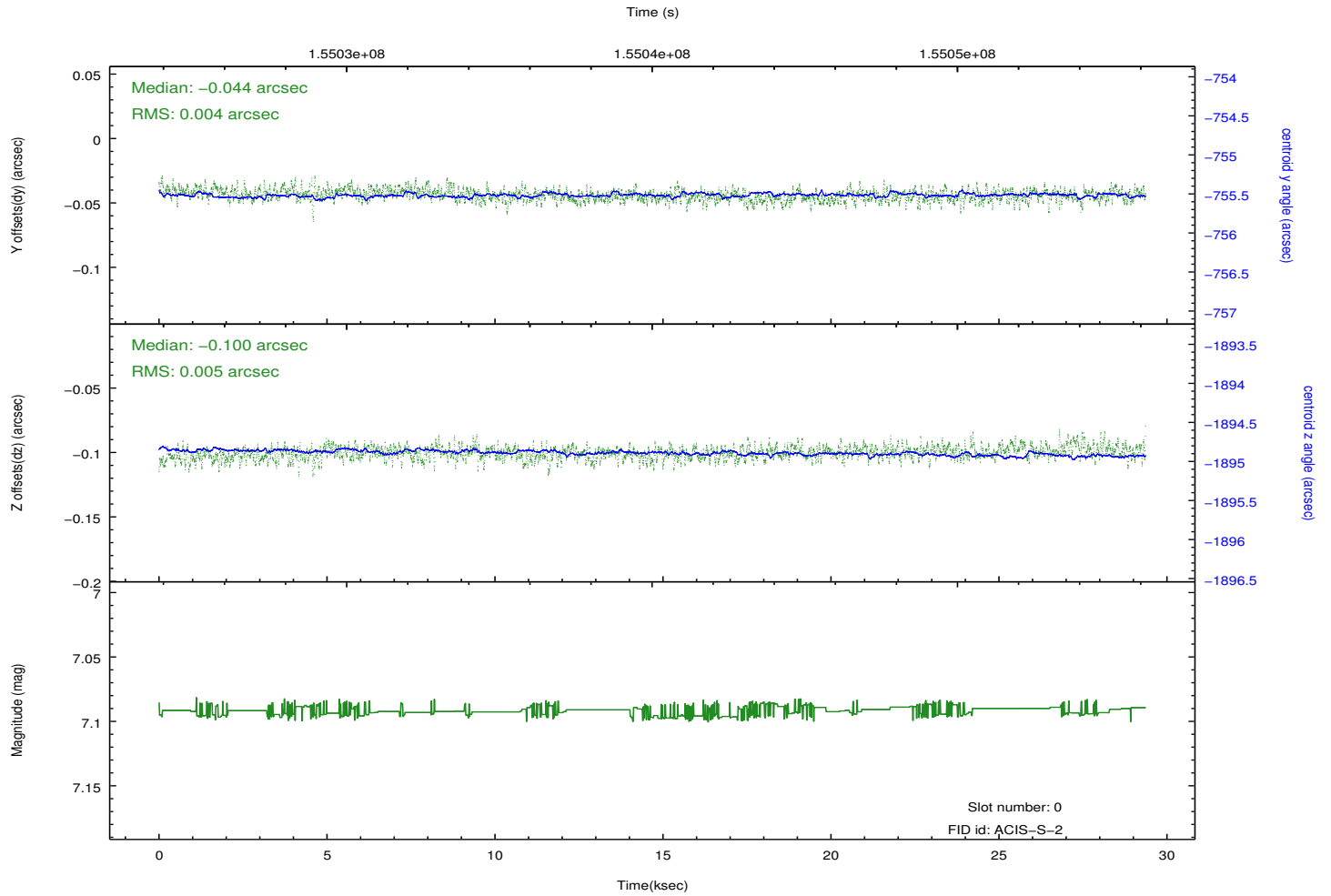
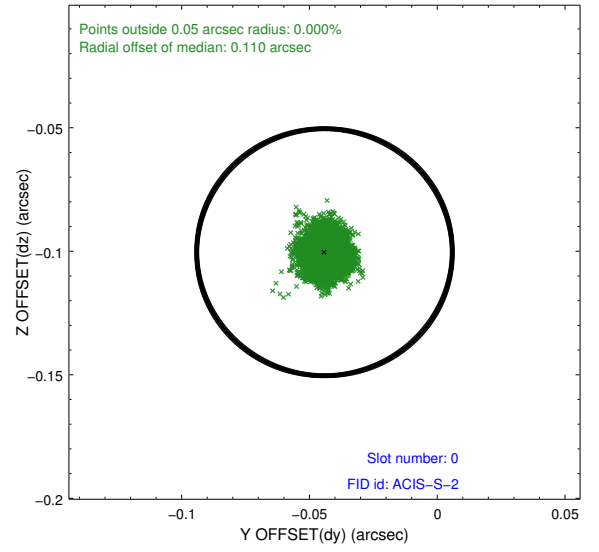
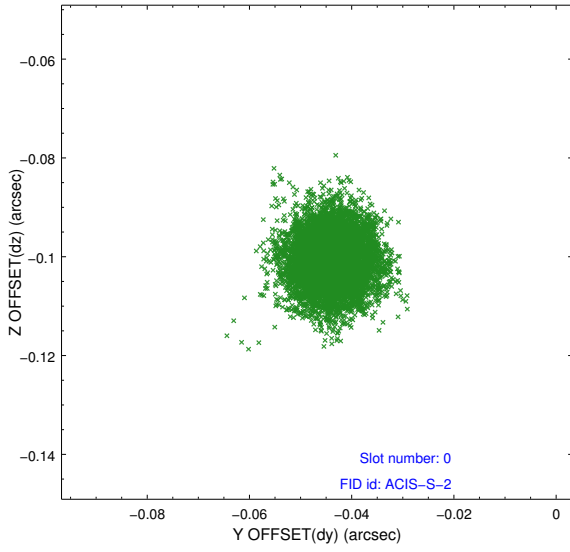


2.4.5 Slot 7

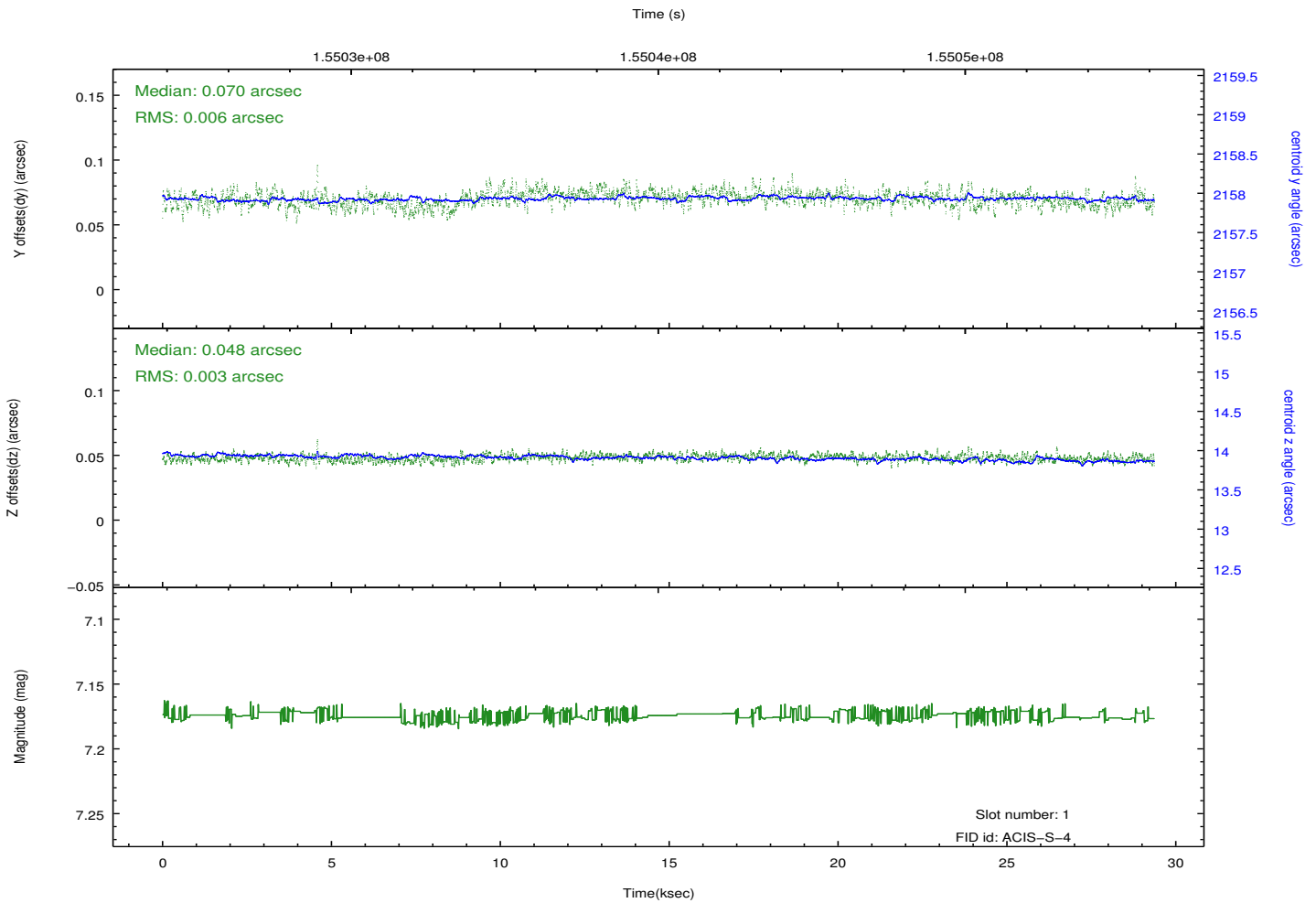
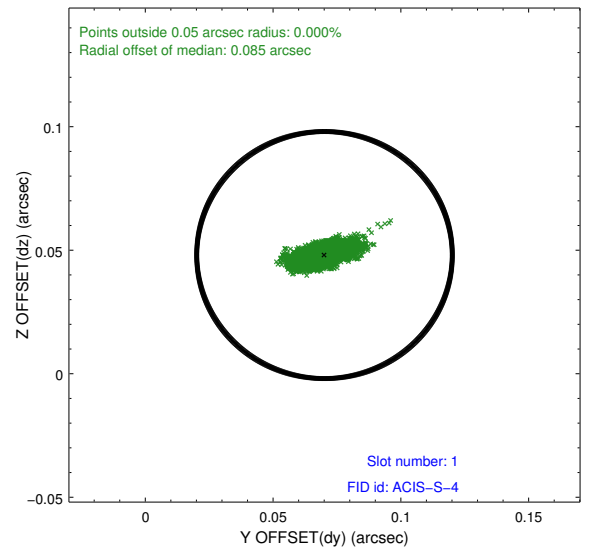
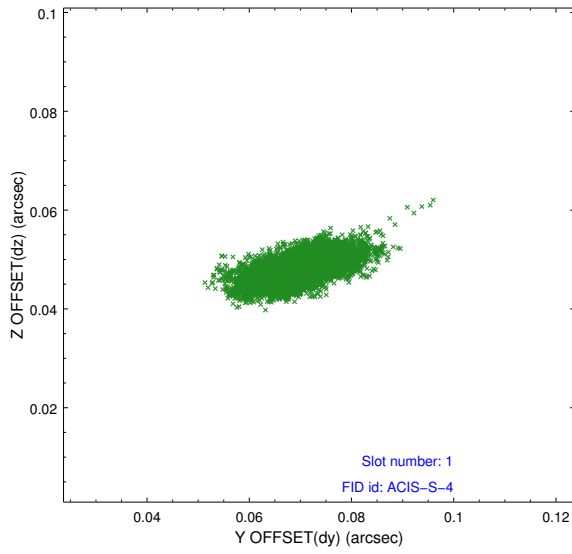


2.5 FID Slots

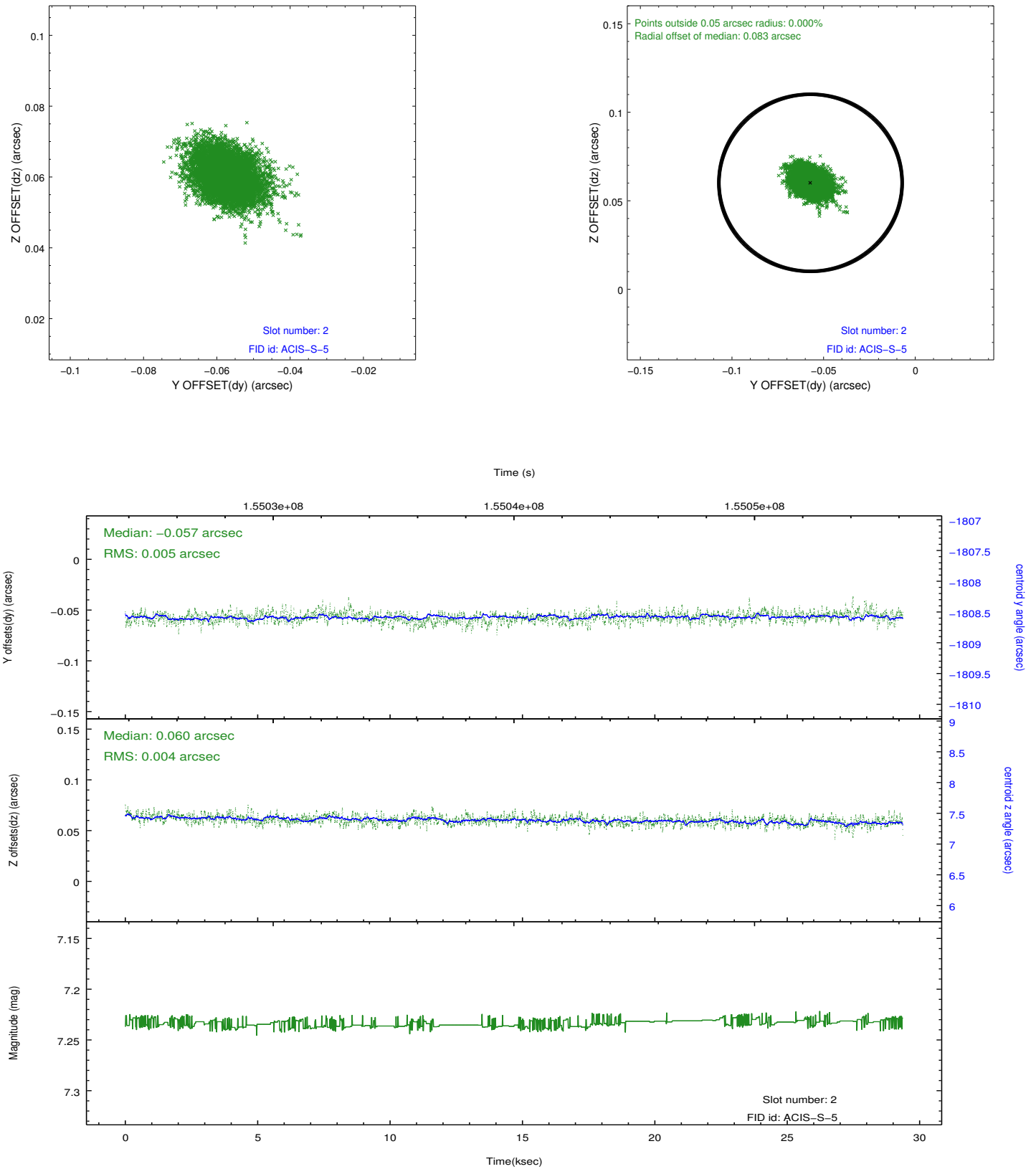
2.5.1 Slot 0



2.5.2 Slot 1

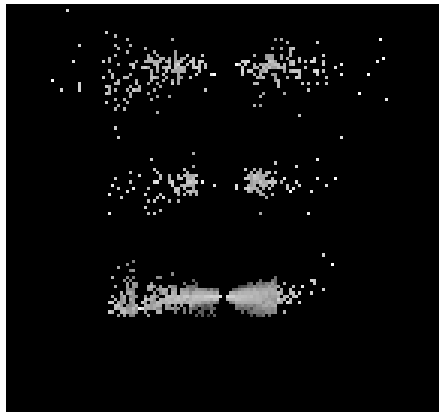


2.5.3 Slot 2

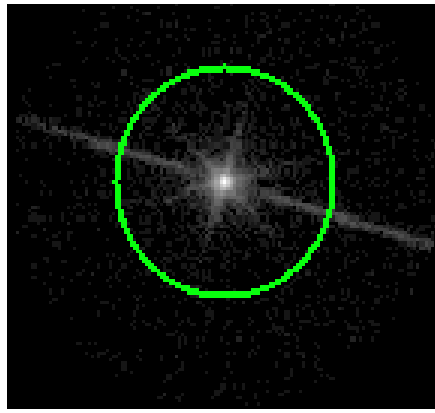


3 Gratings

3.1 LETG Arm



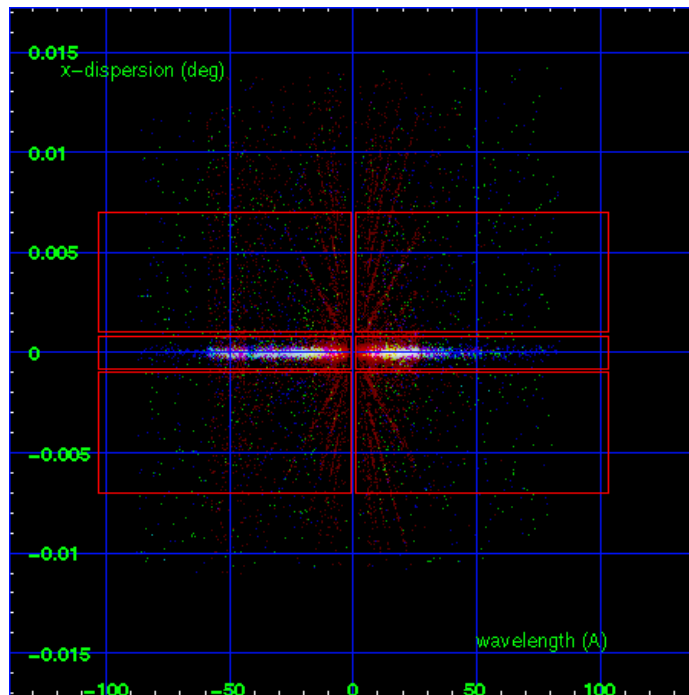
LETG Order Sort 123



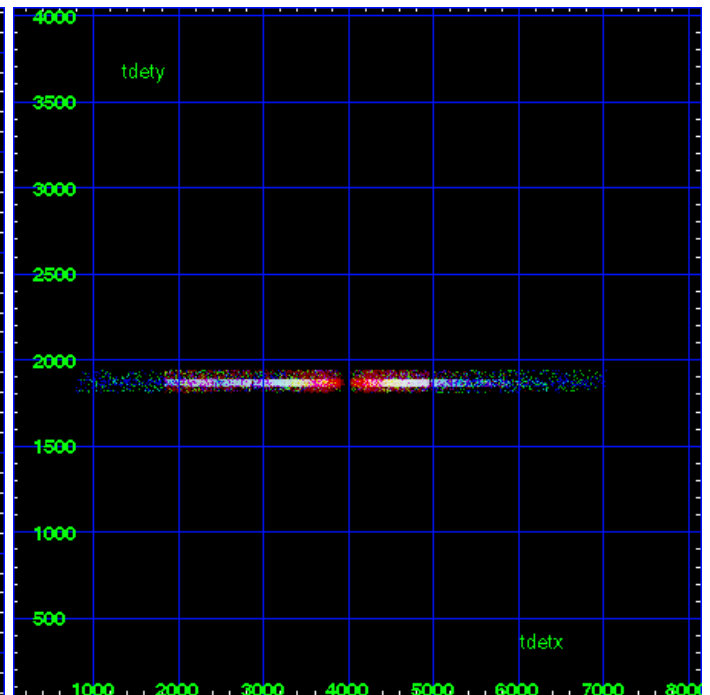
LETG Zero Order



LETG Order Sort ALL

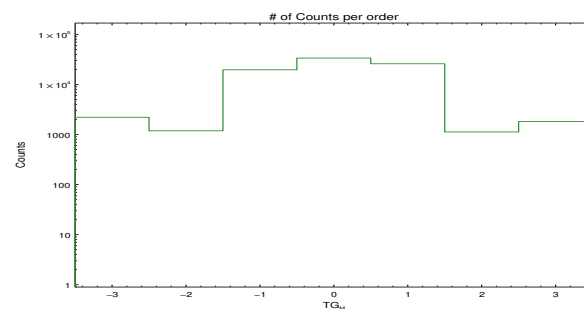


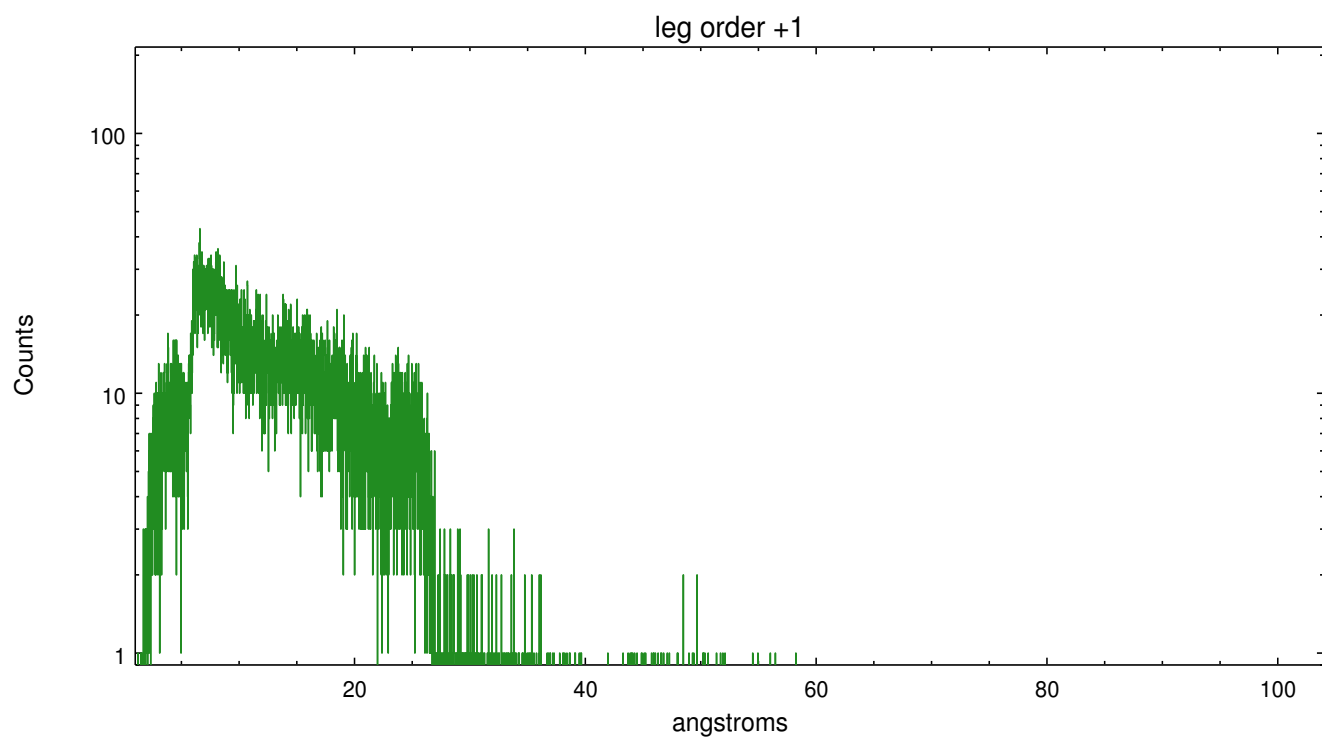
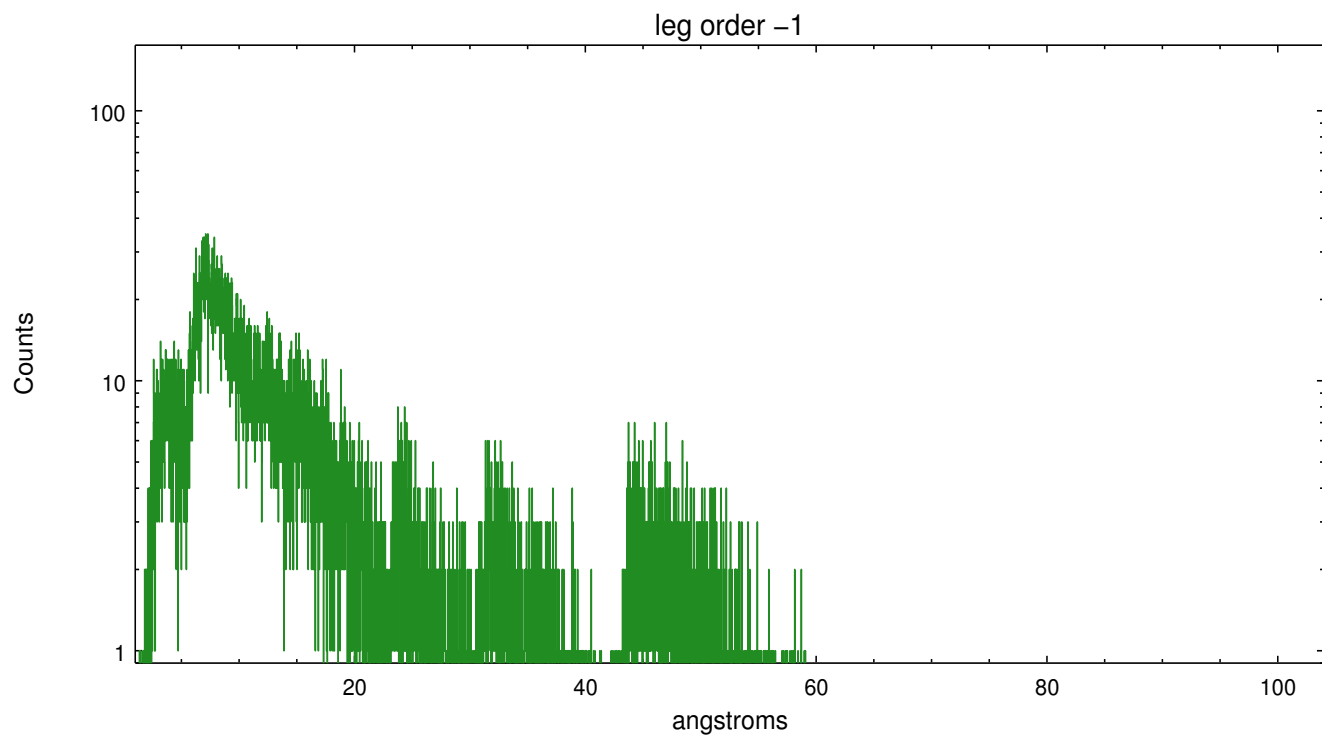
Spot Image LETG



Full Detector LETG

	order -3	order -2	order -1	order 0	order 1	order 2	order 3
Events	2209	1184	19606	33620	25845	1125	1822





A Summary

A.1 Status

V&V Scientist	David Huenemoerder
V&V Date (YYYY-MM-DD)	2013.01.25
V&V Edition	1
V&V Disposition and Status	OK
V&V Charge Time	28.512

A.2 Comments