

V&V Reference Report

L2 ASCDS Version : 8.4.5

Observation 3717 - L2 Version 3
Chandra X-Ray Center

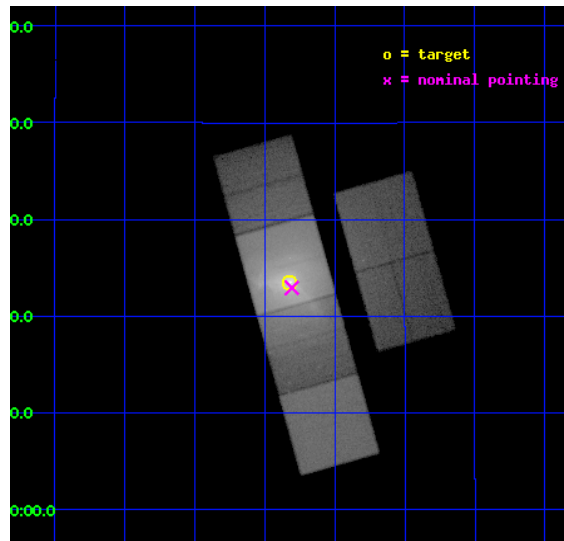
L2 Processing Date : Oct 10 2012

Contents

1	Front	2
2	OBI	3
2.1	OBI	3
2.1.1	Images	3
2.1.2	Bias	3
2.1.3	Parameters	4
2.1.4	Events	4
2.2	Compared Parameters	5
2.3	Aspect	6
2.4	Star Slots	9
2.4.1	Slot 3	9
2.4.2	Slot 4	10
2.4.3	Slot 5	11
2.4.4	Slot 6	12
2.4.5	Slot 7	13
2.5	FID Slots	14
2.5.1	Slot 0	14
2.5.2	Slot 1	15
2.5.3	Slot 2	16
A	Summary	17
A.1	Status	17
A.2	Comments	17

1 Front

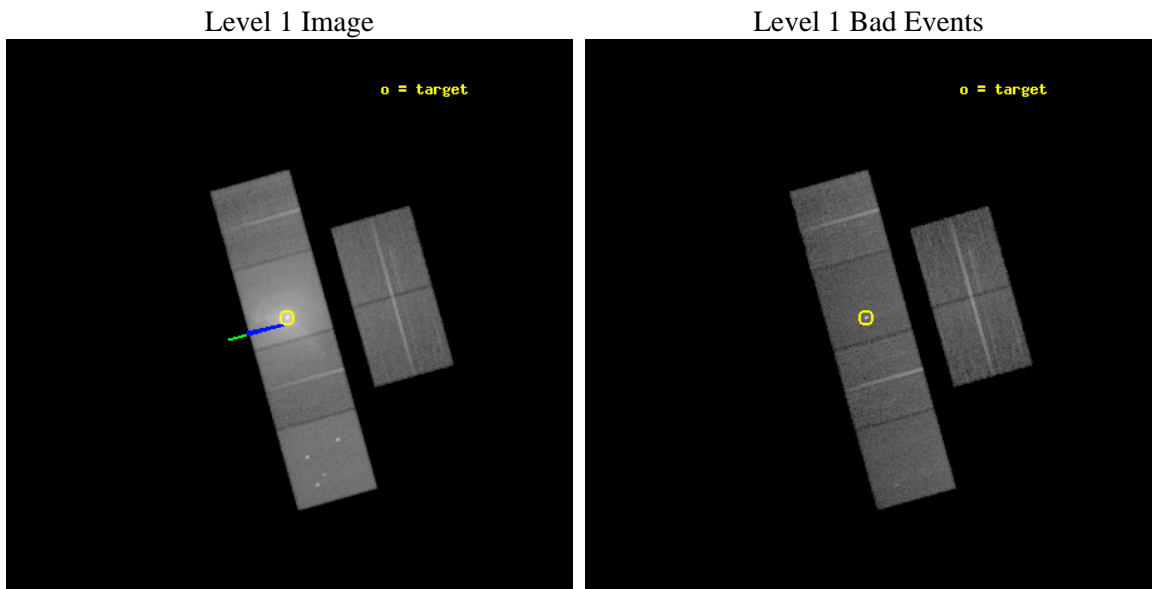
seq_num	400187	Sequence number
obs_id	3717	Observation id
title	THE EXTRAORDINARY GLOBULAR CLUSTER SYSTEM OF M87: THE VIEW FROM CHANDRA	Proposal title
observer	PROF. PATRICK COTE	Principal investigator
object	NGC4486	Source name
dtcycle	0	
cycle	P	events from which exps? Prim/Second/Both
ra_targ	187.705833	Observer's specified target RA [deg]
dec_targ	12.391111	Observer's specified target Dec [deg]
ra_nom	187.70150895698	Nominal RA [deg]
dec_nom	12.382370842925	Nominal Dec [deg]
roll_nom	254.35758120191	Nominal Roll [deg]
revision	3	Processing version of data
ontime	20825.599922419	Sum of GTIs [s]
livetime	20561.89363653	Livetime [s]
ontime2	20825.599922419	Sum of GTIs [s]
ontime3	20825.599922419	Sum of GTIs [s]
ontime5	20825.599922419	Sum of GTIs [s]
ontime6	20825.599922419	Sum of GTIs [s]
ontime7	20825.599922419	Sum of GTIs [s]
ontime8	20825.599922419	Sum of GTIs [s]
l2events	1383058	Number of level 2 events



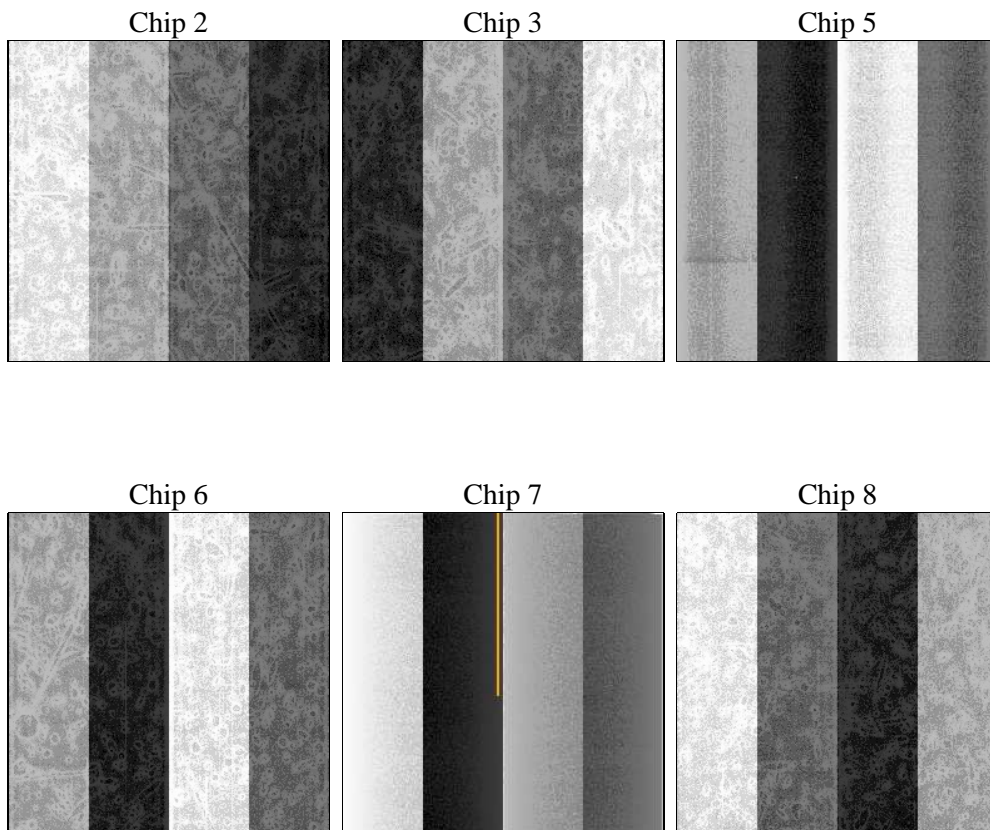
2 OBI

2.1 OBI

2.1.1 Images



2.1.2 Bias



2.1.3 Parameters

obi_num	0	Obi number	sched_exp_time	21009.355000	[s] Scheduled observation exposure time
ascdsver	8.4.5	Processing system revision	ontime	20825.599922419	Sum of GTIs [s]
caldsver	4.5.2	 	ontime2	20825.599922419	Sum of GTIs [s]
date	2012-10-10T04:24:04	Date and time of file creation	ontime3	20825.599922419	Sum of GTIs [s]
revision	3	Processing version of data	ontime5	20825.599922419	Sum of GTIs [s]
			ontime6	20825.599922419	Sum of GTIs [s]
			ontime7	20825.599922419	Sum of GTIs [s]
			ontime8	20825.599922419	Sum of GTIs [s]
			l1events	2192701	Number of level 1 events

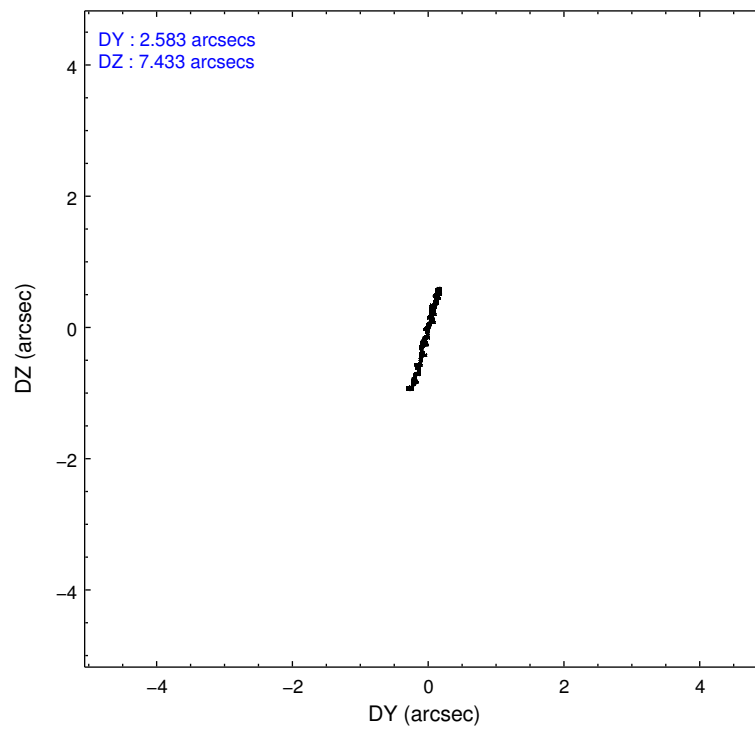
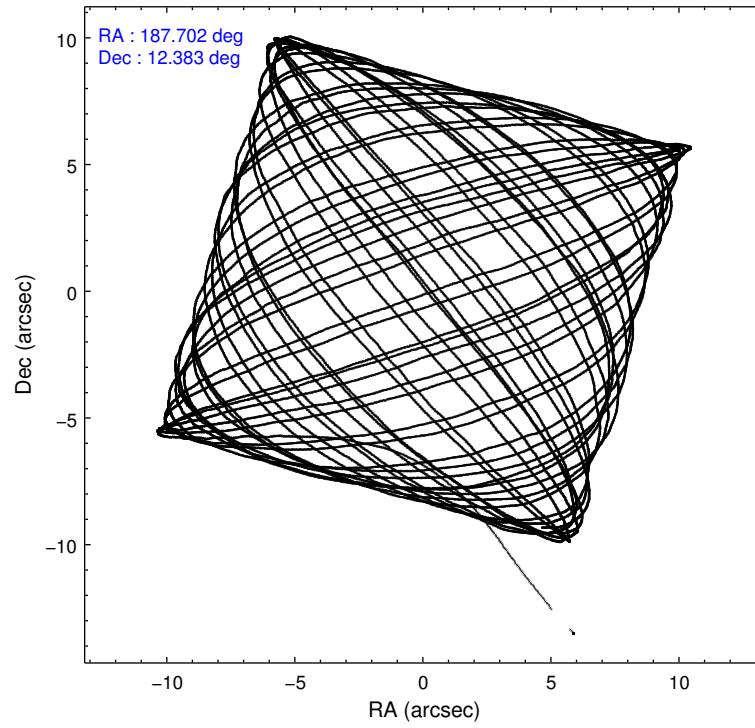
2.1.4 Events

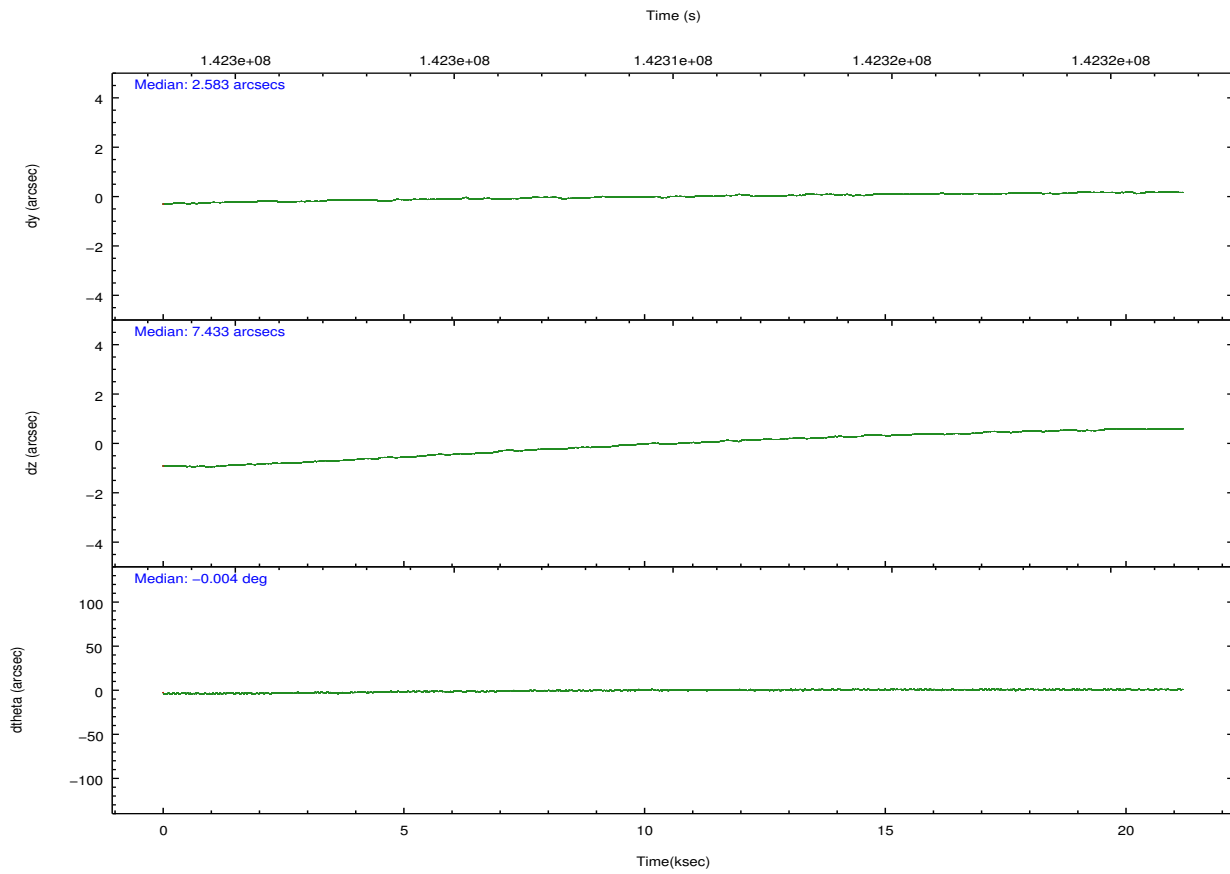
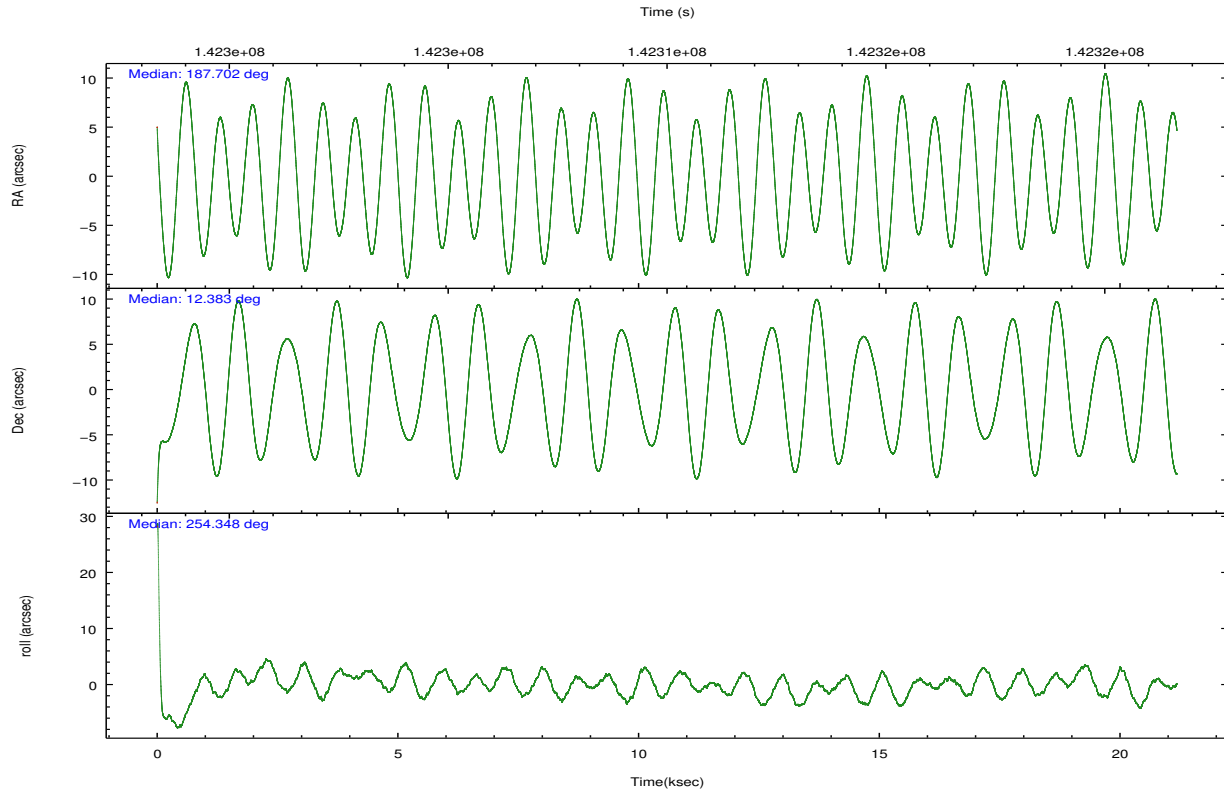
	ccd 2	ccd 3	ccd 5	ccd 6	ccd 7	ccd 8		ccd 2	ccd 3	ccd 5	ccd 6	ccd 7	ccd 8
level 1 events	177711	188791	283521	309399	984230	249049	grade 0 events	39073	50030	40246	146927	258261	71171
rejected events	122613	120937	110635	126596	119730	138915		21%	26%	14%	47%	26%	28%
rejected %	68%	64%	39%	40%	12%	55%	grade 1 events	225	249	450	593	1019	330
								0%	0%	0%	0%	0%	0%
							grade 2 events	7335	8268	47016	18393	219225	14777
								4%	4%	16%	5%	22%	5%
							grade 3 events	2470	2847	9919	5804	98289	6741
								1%	1%	3%	1%	9%	2%
							grade 4 events	2562	2831	10084	5646	96524	6268
								1%	1%	3%	1%	9%	2%
							grade 5 events	4985	5589	15776	6373	24008	8056
								2%	2%	5%	2%	2%	3%
							grade 6 events	3663	3887	65638	6058	192334	11192
								2%	2%	23%	1%	19%	4%
							grade 7 events	117398	115090	94392	119605	94570	130514
								66%	60%	33%	38%	9%	52%

2.2 Compared Parameters

Parameter	Planned	Actual	Parameter	Planned	Actual
Instrument	ACIS	ACIS	Obspar format version number	7	7
Detector	ACIS-235678	ACIS-235678	Obspar file type	PREDICTED	ACTUAL
Grating	NONE	NONE	Obspar update status	NONE	UPDATED
Data mode	FAINT	FAINT	Number of optional ACIS chips dropped	0	0
Observation mode	POINTING	POINTING	On-chip summing requested	N	N
[deg] Pointing RA	187.694260	187.7015089569801	Subarray requested	NONE	NONE
[deg] Pointing Dec	12.408689	12.38237084292465	Alternating exposures requested	N	N
[deg] Pointing Roll	254.202483	254.3575812019121	[s] Primary exposure time	0.000000	3.2
[deg] Roll angle	256.200000	256.200000			
[deg] Roll tolerance	2.000000	2.000000			
Roll constraint allows 180D rotation	N	N			
[mm] SIM focus pos	-0.684267	-0.6828225247311905			
[mm] SIM defocus	0	0.001444936568705701			
[mm] SIM translation stage pos	-190.132523	-190.1400660498719			
[mm] SIM translation stage offset	0	0.00754346686406393			
[s] Observation start time (MET)	142299582.184000	142298561.66409			
Observation start date	2002-07-05T23:38:38	2002-07-05T23:22:41			
[s] Observation end time (MET)	142320591.184000	142320905.64001			
Observation end date	2002-07-06T05:28:47	2002-07-06T05:35:05			
Read mode	TIMED	TIMED			

2.3 Aspect



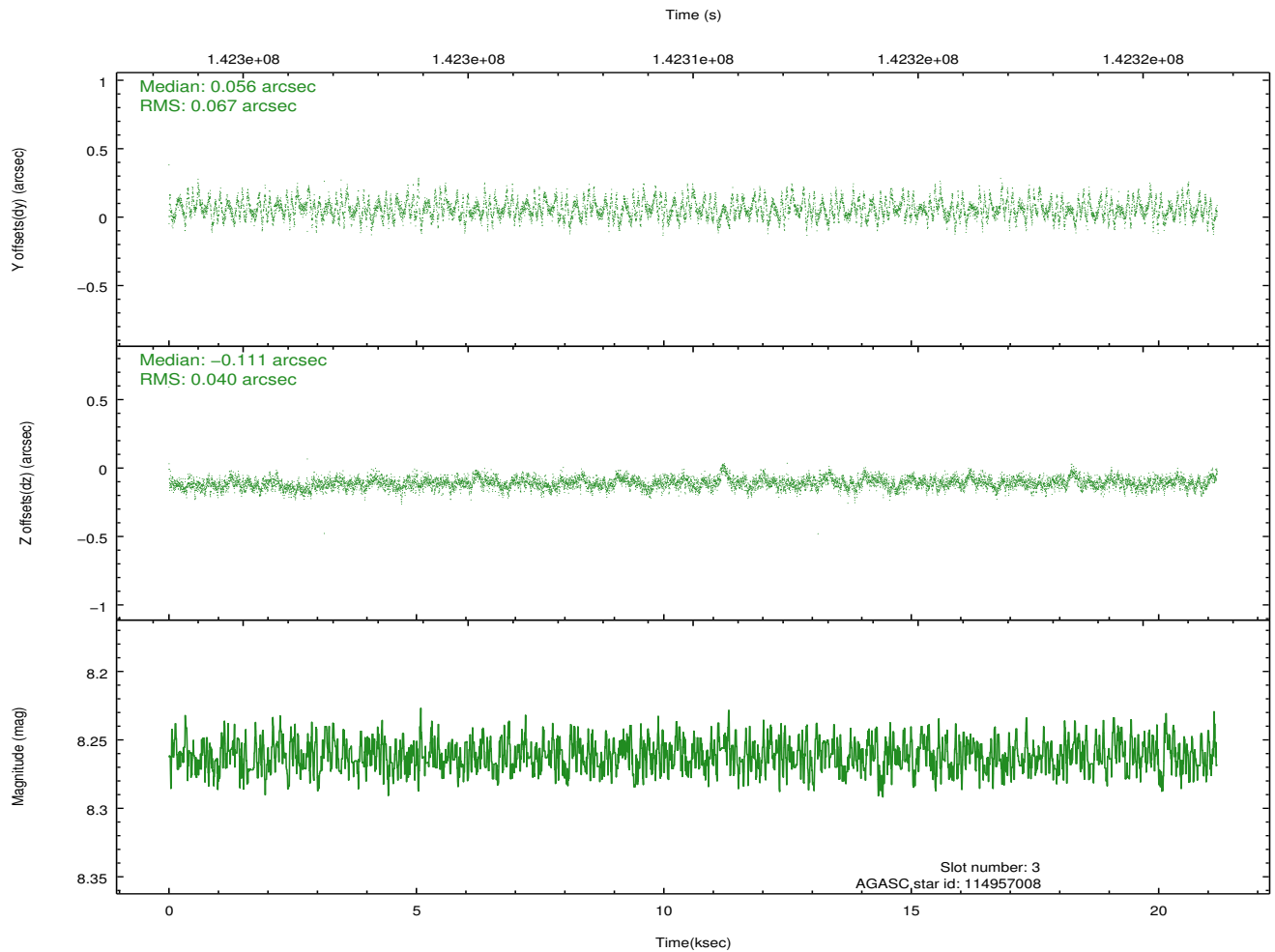
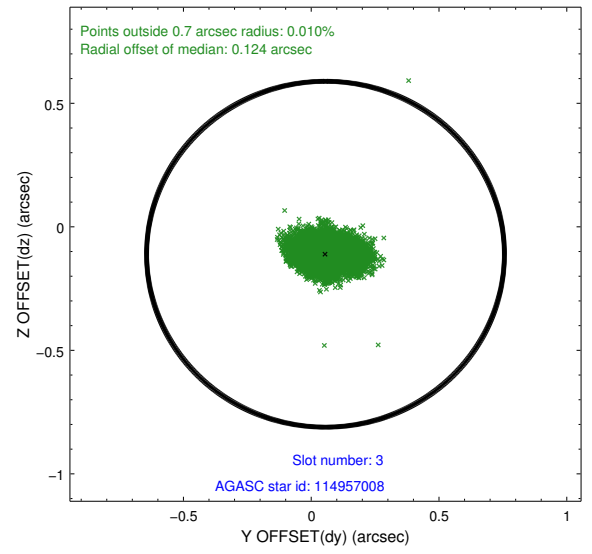
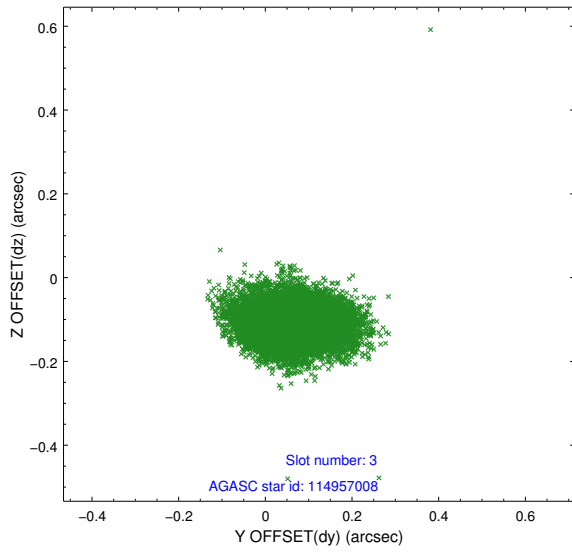


Slot Statistics

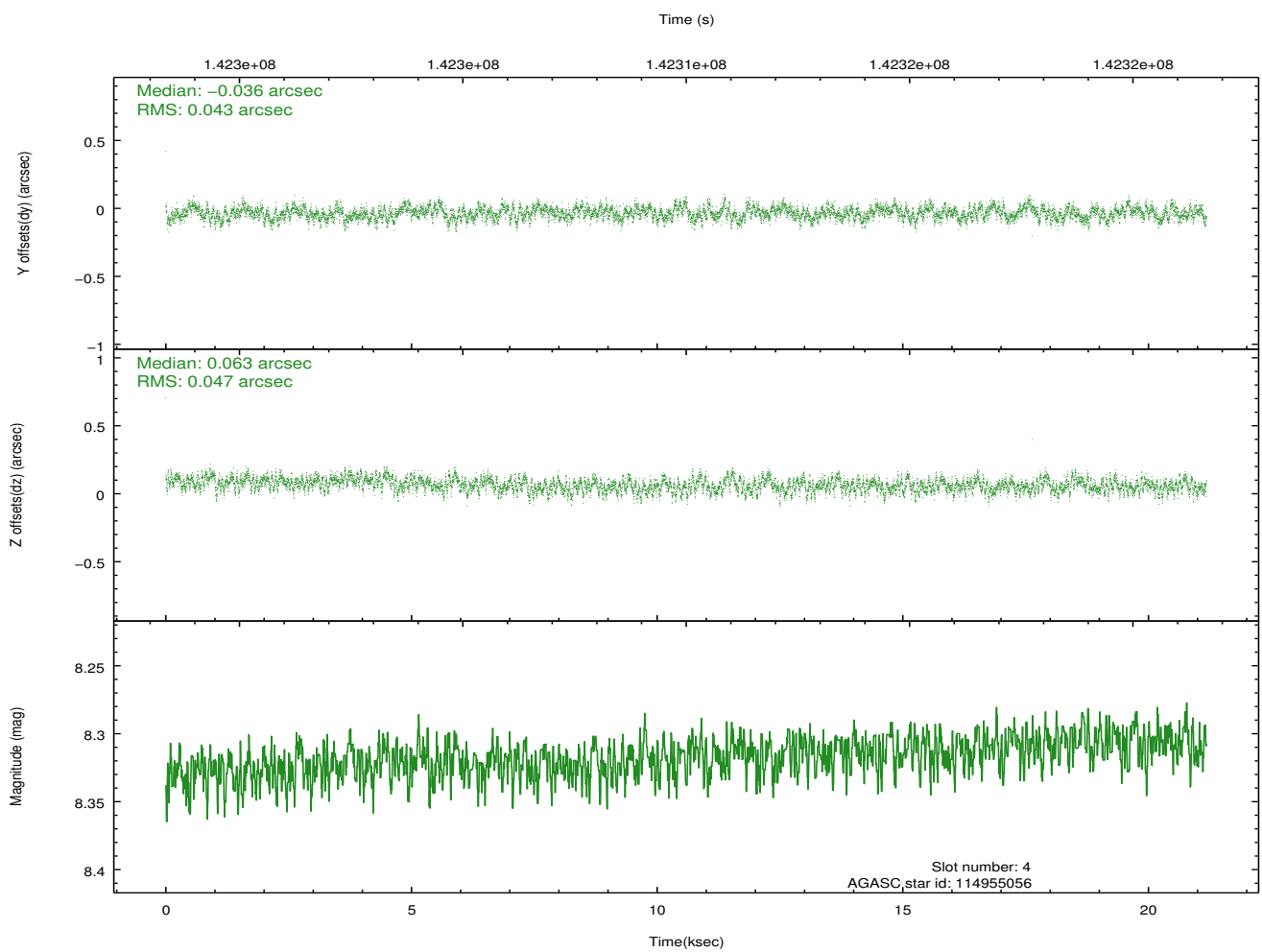
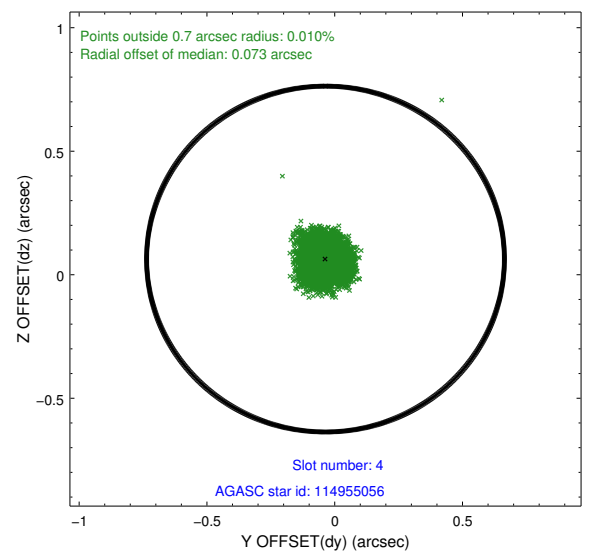
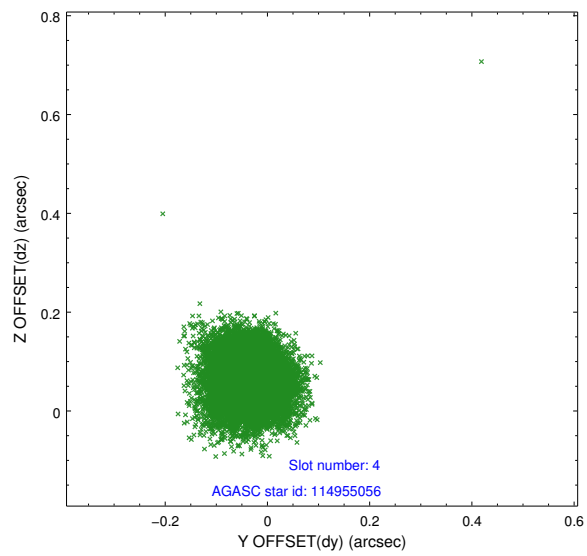
slot	status	id	mag	n_pts	med_dy	med_dz	dr1	dr2	ra	dec	mean_y	mean_z
0	FID	ACIS-S-2	7.11	5166	-0.008	0.008	0.014	0.035	0.000000	0.000000	-755.21	-1728.52
1	FID	ACIS-S-4	7.20	5166	-0.037	0.001	0.009	0.042	0.000000	0.000000	2157.97	179.78
2	FID	ACIS-S-5	7.24	5166	0.013	-0.003	0.011	0.017	0.000000	0.000000	-1807.81	173.64
3	GUIDE	114957008	8.26	10332	0.056	-0.111	0.082	0.137	186.894794	12.099160	1836.05	-2406.17
4	GUIDE	114955056	8.32	10330	-0.036	0.063	0.069	0.107	187.914001	12.127854	763.07	1018.77
5	GUIDE	114954440	9.21	10330	0.034	-0.007	0.107	0.176	186.915066	12.219118	1400.90	-2453.28
6	GUIDE	114952424	9.33	10323	0.058	0.080	0.094	0.157	187.477948	11.953762	1784.51	-288.01
7	GUIDE	114952792	9.50	10329	-0.116	-0.024	0.103	0.166	187.070263	12.344747	818.16	-2050.22

2.4 Star Slots

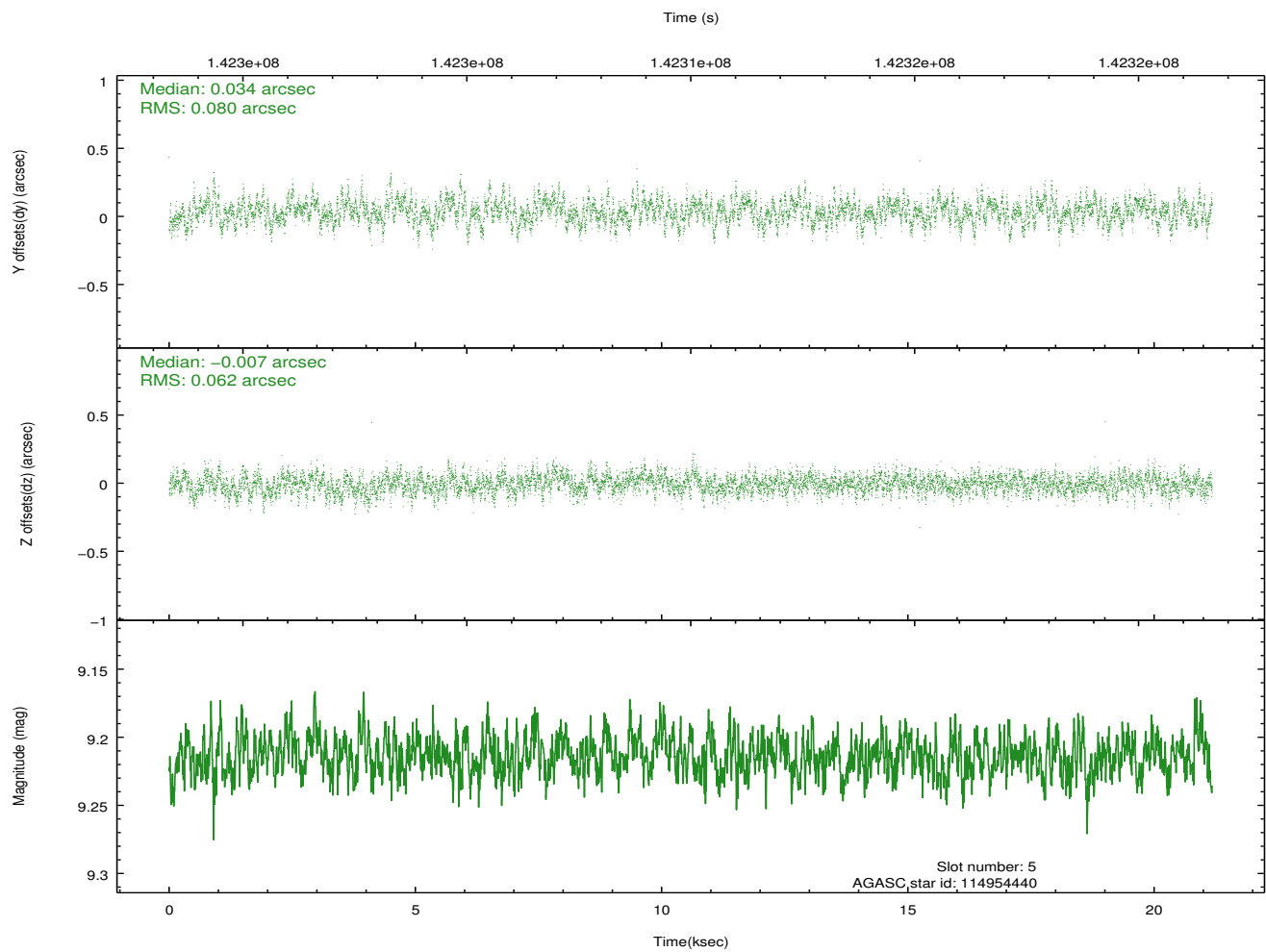
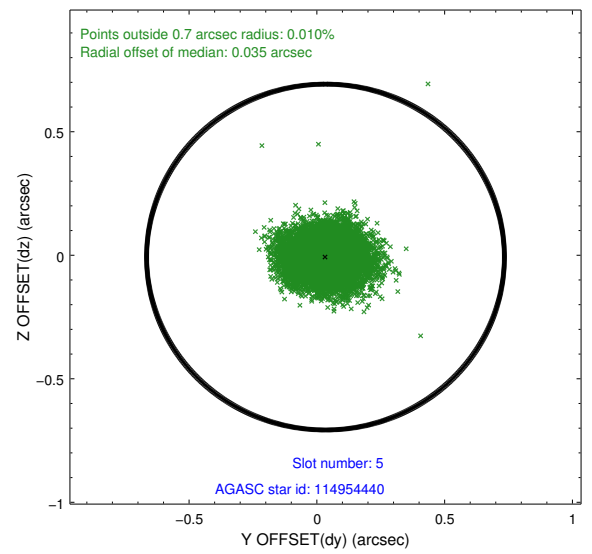
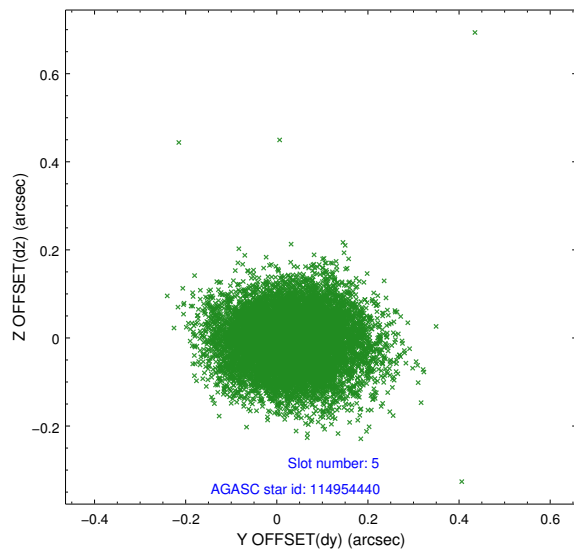
2.4.1 Slot 3



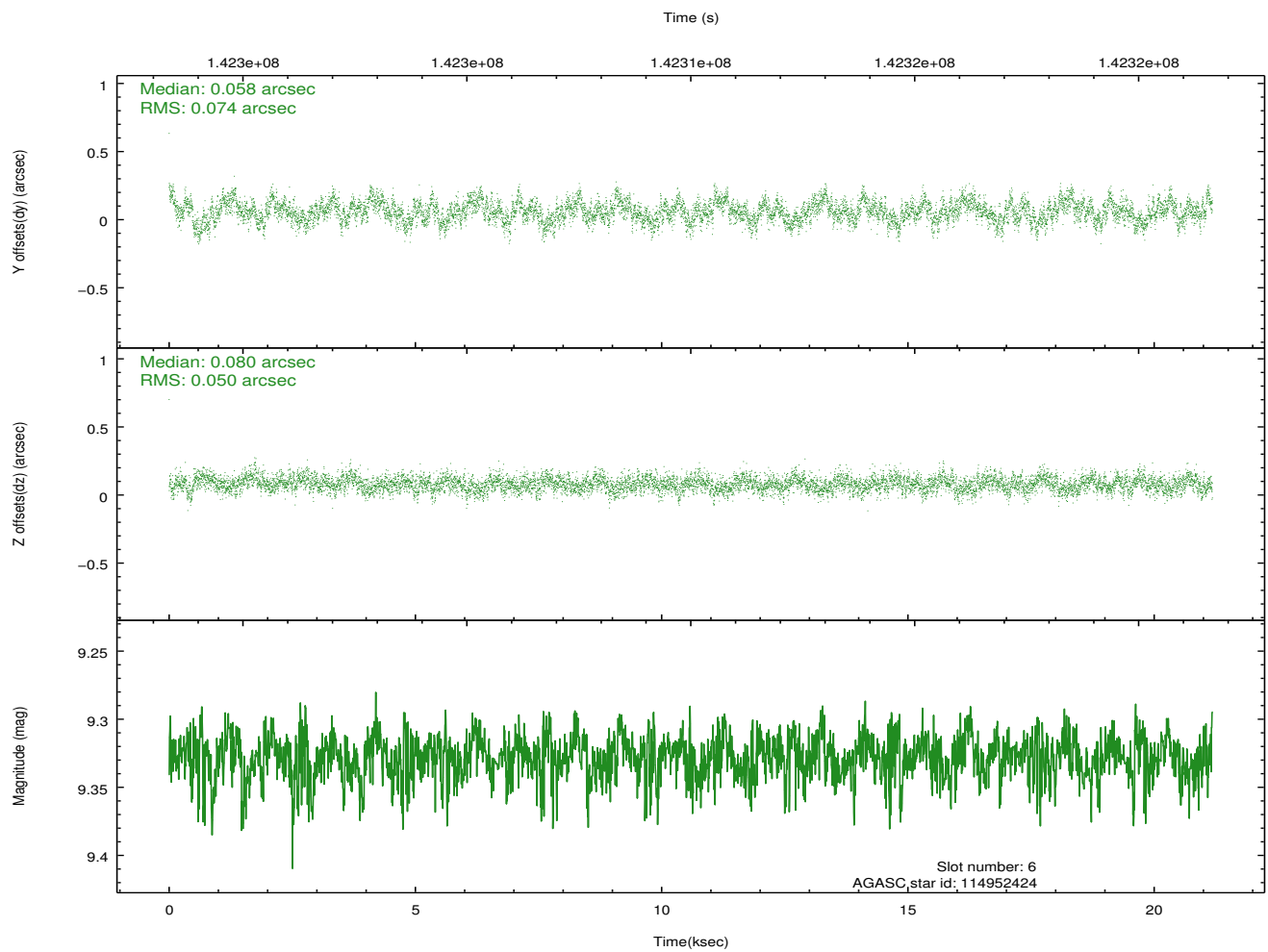
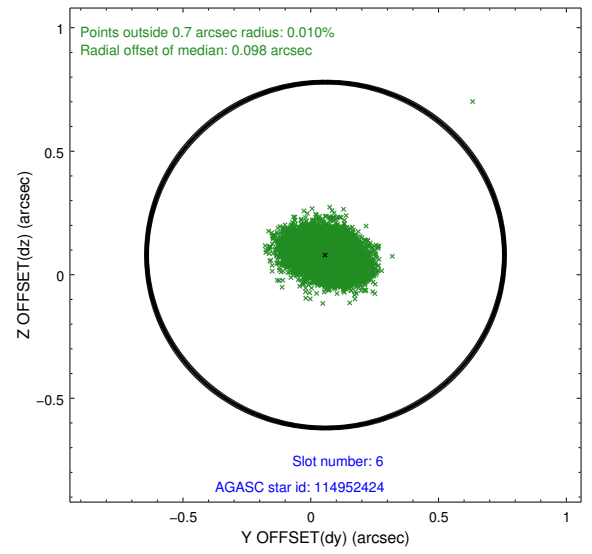
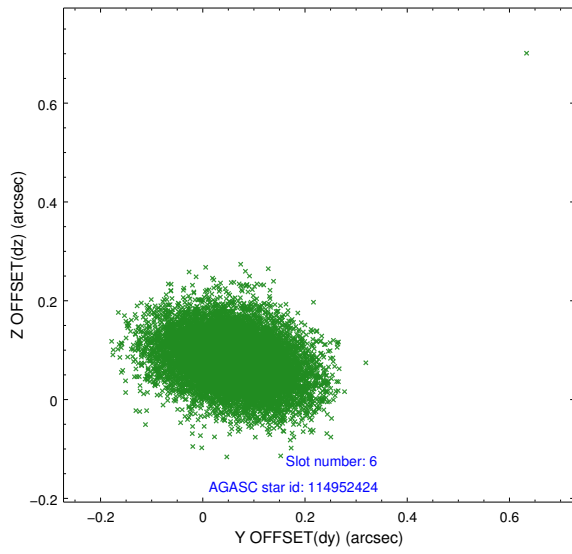
2.4.2 Slot 4



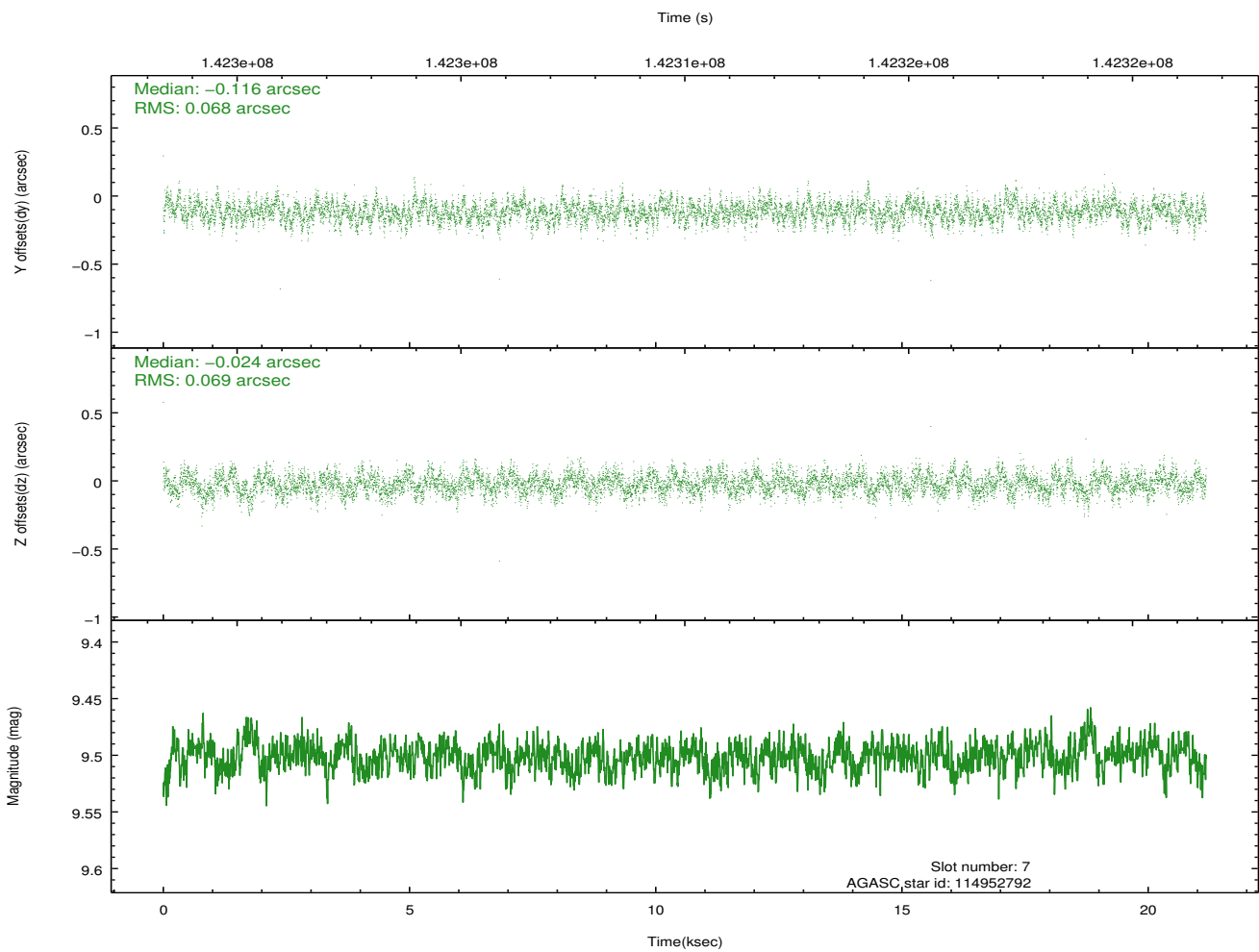
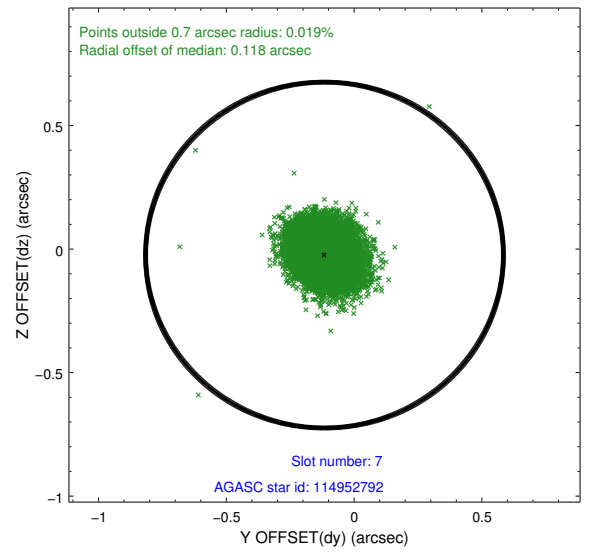
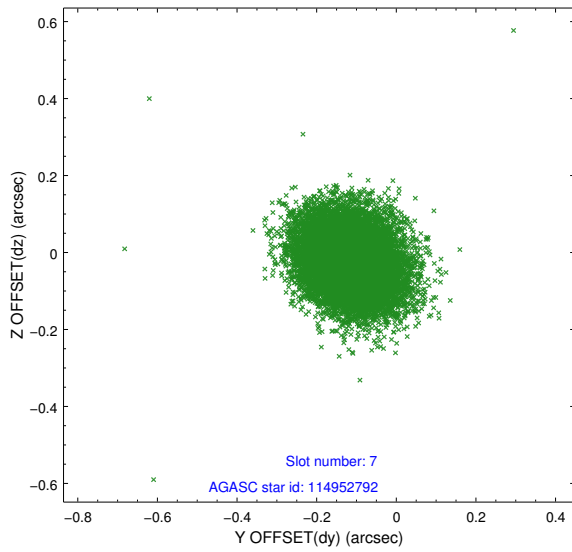
2.4.3 Slot 5



2.4.4 Slot 6

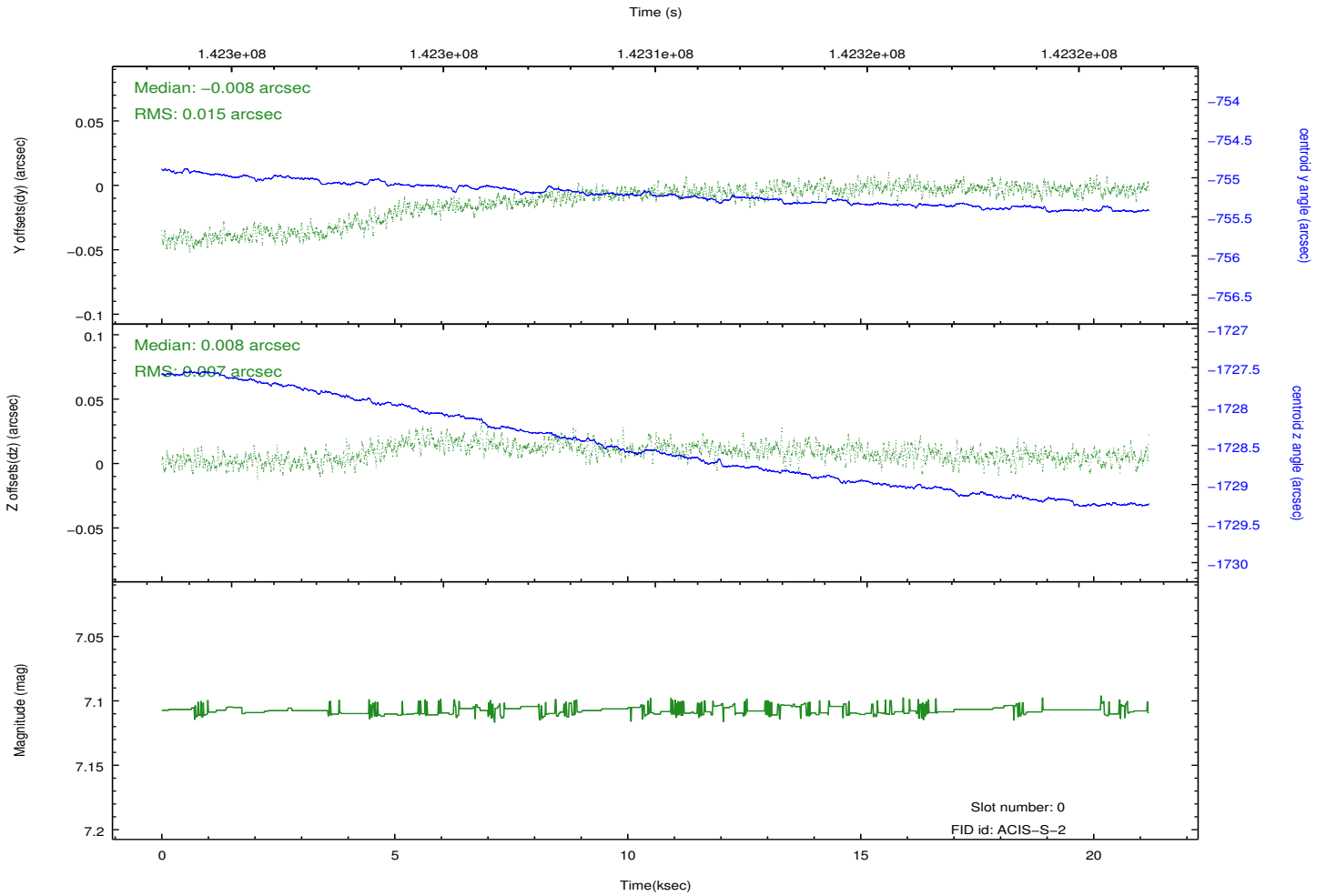
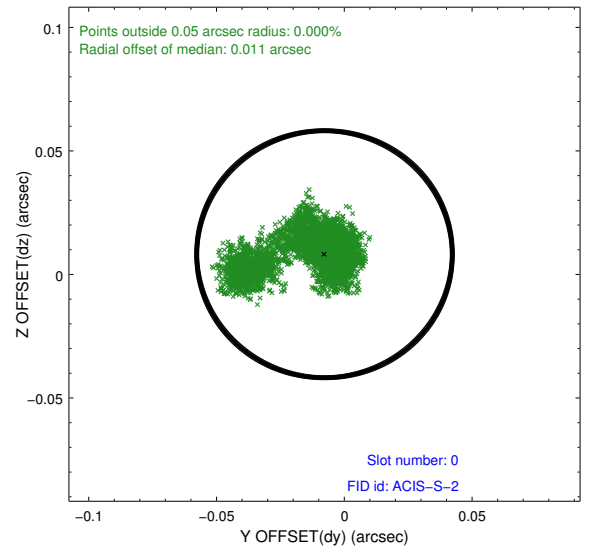
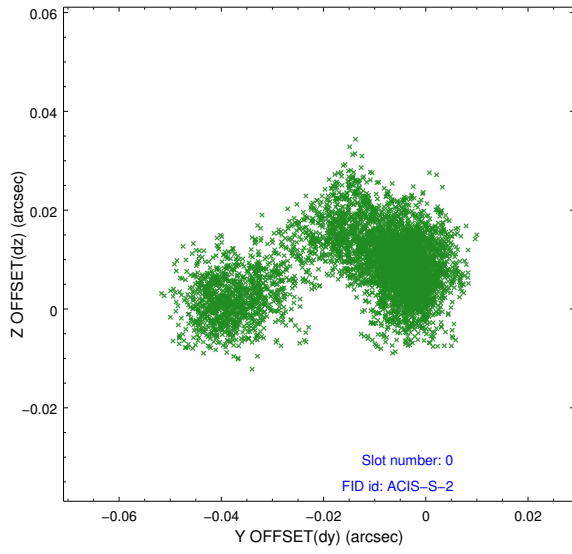


2.4.5 Slot 7

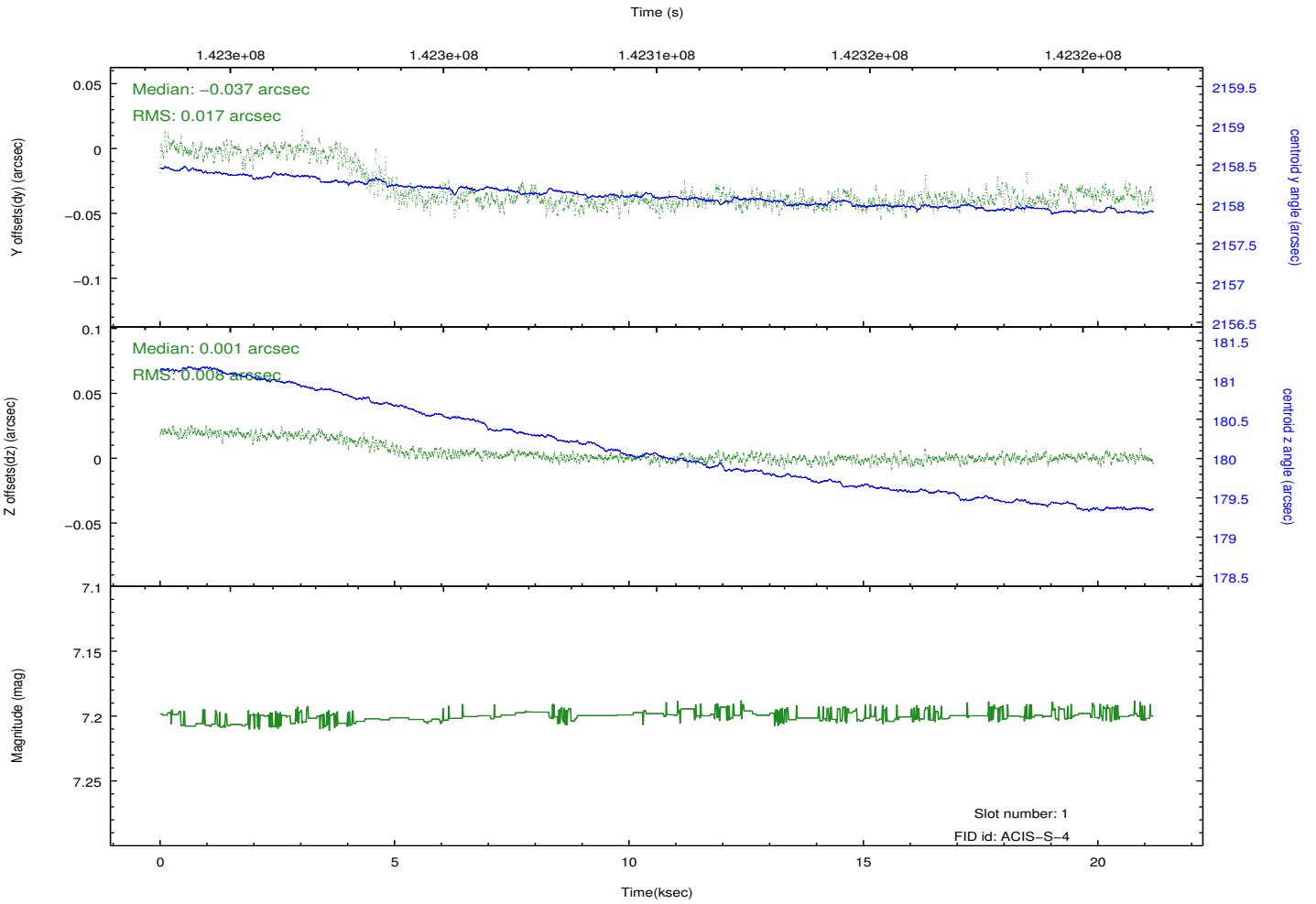
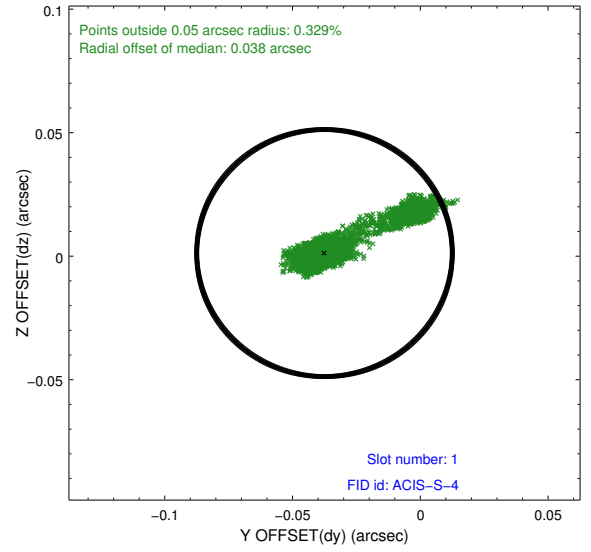
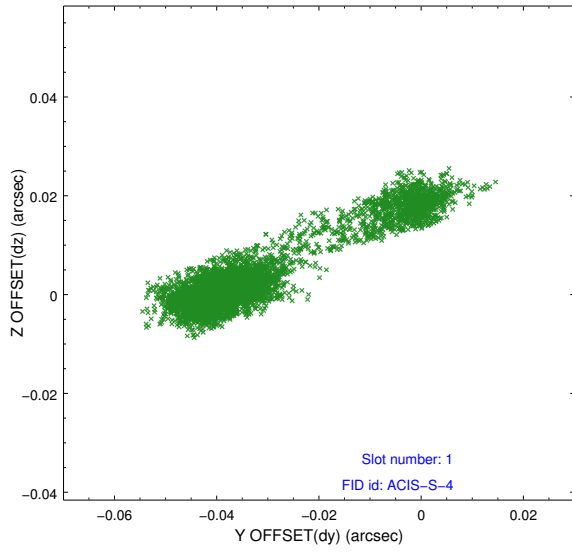


2.5 FID Slots

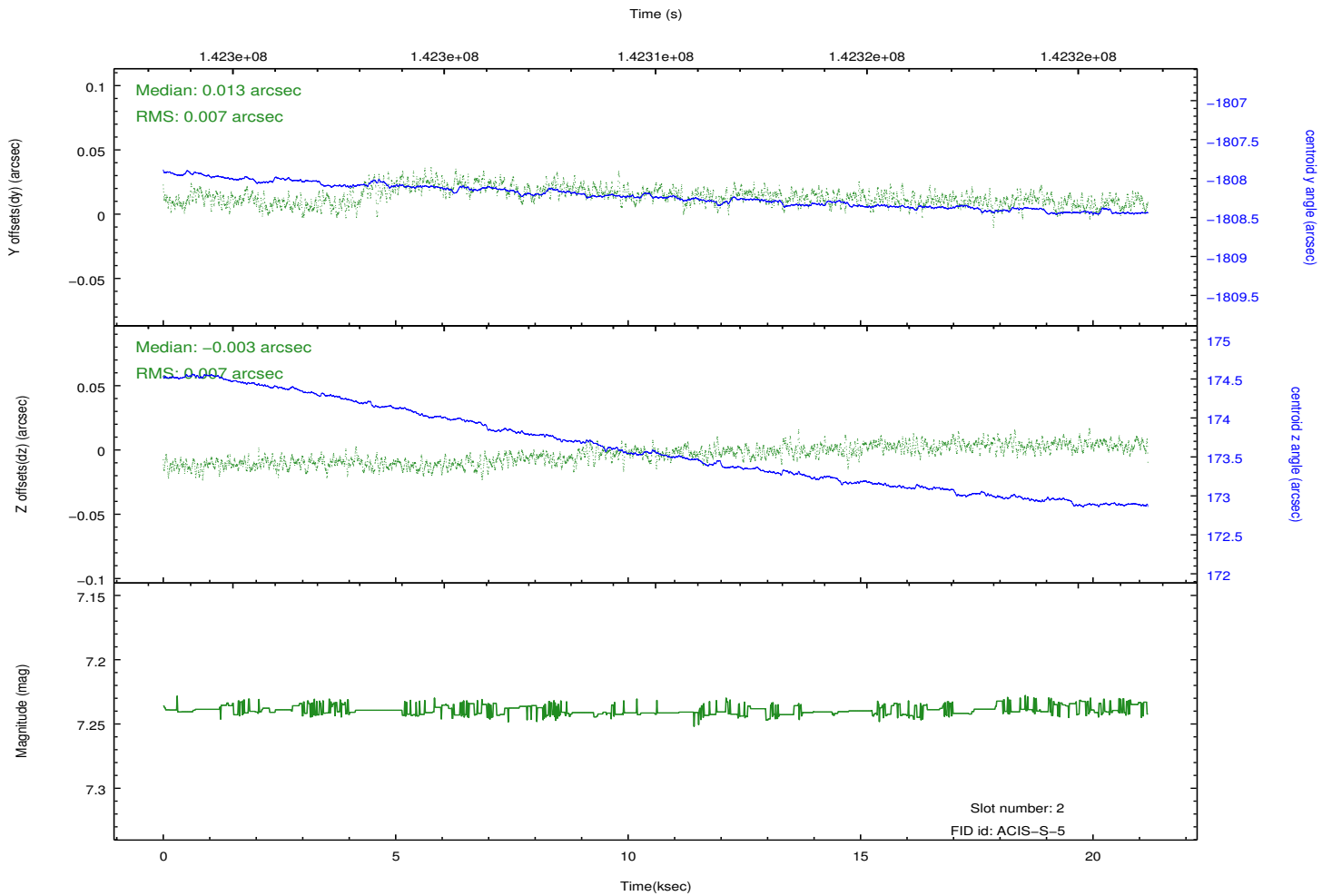
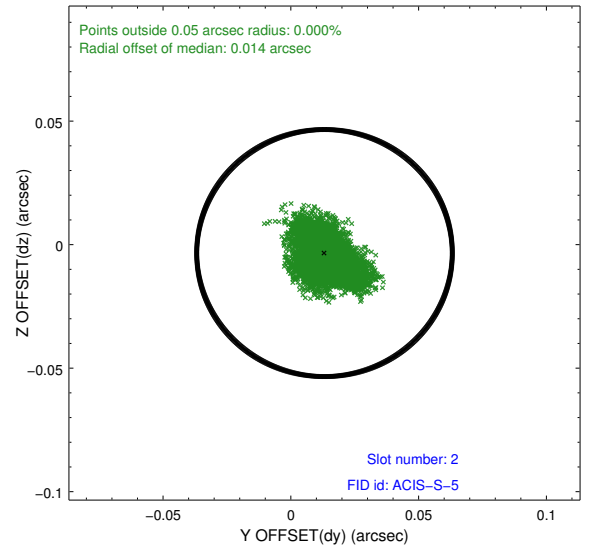
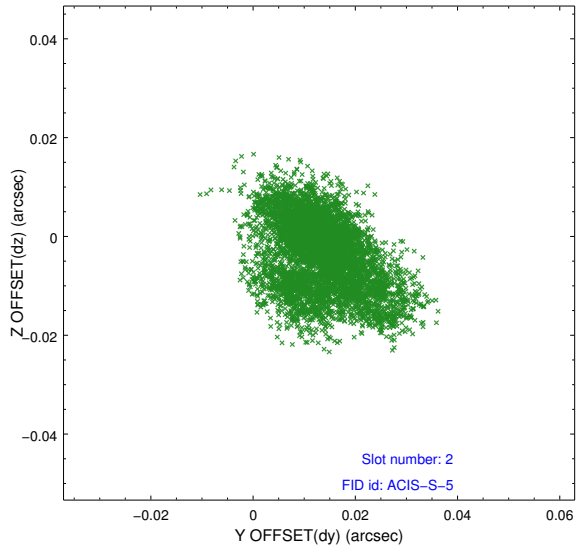
2.5.1 Slot 0



2.5.2 Slot 1



2.5.3 Slot 2



A Summary

A.1 Status

V&V Scientist	Jen Lauer
V&V Date (YYYY-MM-DD)	2012.10.19
V&V Edition	1
V&V Disposition and Status	OK
V&V Charge Time	20.828

A.2 Comments

Roll constraint OK.