

V&V Reference Report

L2 ASCDS Version : 8.4.5

Observation 377 - L2 Version 6
Chandra X-Ray Center

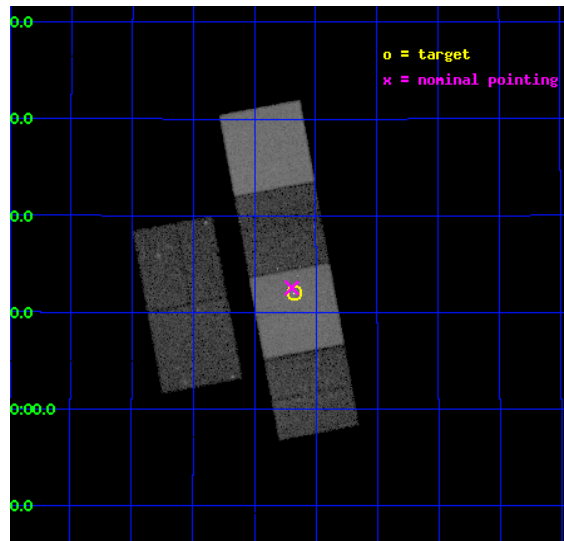
L2 Processing Date : Sep 17 2012

Contents

1	Front	2
2	OBI	3
2.1	OBI	3
2.1.1	Images	3
2.1.2	Bias	3
2.1.3	Parameters	4
2.1.4	Events	4
2.2	Compared Parameters	5
2.3	Aspect	6
2.4	Star Slots	9
2.4.1	Slot 3	9
2.4.2	Slot 4	10
2.4.3	Slot 5	11
2.4.4	Slot 6	12
2.5	FID Slots	13
2.5.1	Slot 0	13
2.5.2	Slot 1	14
2.5.3	Slot 2	15
A	Summary	16
A.1	Status	16
A.2	Comments	16

1 Front

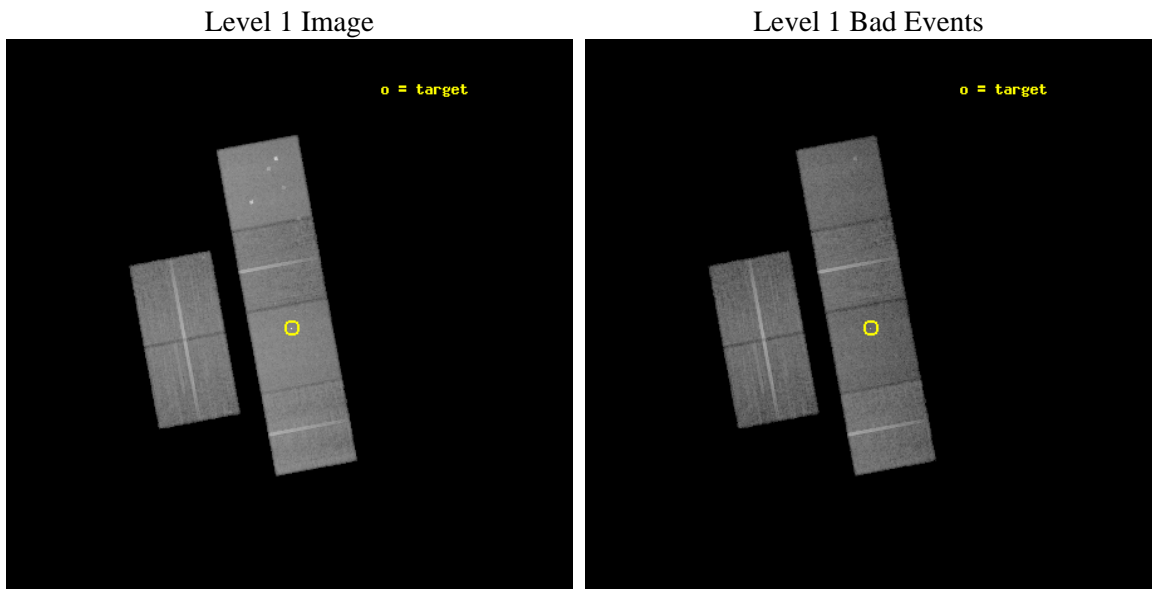
seq_num	700049	Sequence number
obs_id	377	Observation id
title	EXTENDED EMISSION AROUND A GIGAHERTZ PEAKED RADIO SOURCE	Proposal
observer	Dr. Stephen Murray	Principal investigator
object	B2 0738+313	Source name
dtcycle	0	
cycle	P	events from which exps? Prim/Second/Both
ra_targ	115.294583	Observer's specified target RA [deg]
dec_targ	31.200111	Observer's specified target Dec [deg]
ra_nom	115.29871068358	Nominal RA [deg]
dec_nom	31.209359606818	Nominal Dec [deg]
roll_nom	79.494052402113	Nominal Roll [deg]
revision	6	Processing version of data
ontime	27952.000026017	Sum of GTIs [s]
livetime	27598.054971014	Livetime [s]
ontime2	27952.000026017	Sum of GTIs [s]
ontime3	27952.000026017	Sum of GTIs [s]
ontime5	27952.000026017	Sum of GTIs [s]
ontime6	27952.000026017	Sum of GTIs [s]
ontime7	27952.000026017	Sum of GTIs [s]
ontime8	27952.000026017	Sum of GTIs [s]
l2events	257192	Number of level 2 events



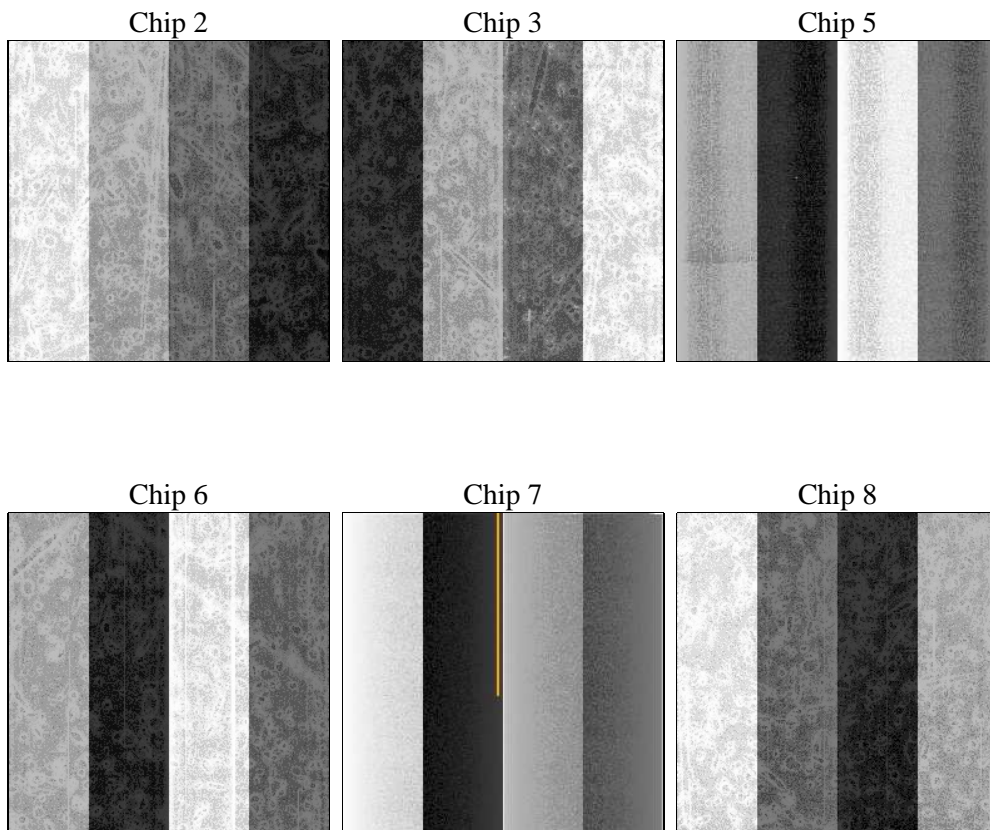
2 OBI

2.1 OBI

2.1.1 Images



2.1.2 Bias



2.1.3 Parameters

obi_num	0	Obi number	sched_exp_time	28000.000000	[s] Scheduled observation exposure time
ascdsver	8.4.5	Processing system revision	ontime	27952.000026017	Sum of GTIs [s]
caldbver	4.5.1.1	 	ontime2	27952.000026017	Sum of GTIs [s]
date	2012-09-17T21:45:21	Date and time of file creation	ontime3	27952.000026017	Sum of GTIs [s]
revision	6	Processing version of data	ontime5	27952.000026017	Sum of GTIs [s]
			ontime6	27952.000026017	Sum of GTIs [s]
			ontime7	27952.000026017	Sum of GTIs [s]
			ontime8	27952.000026017	Sum of GTIs [s]
			l1events	1182125	Number of level 1 events

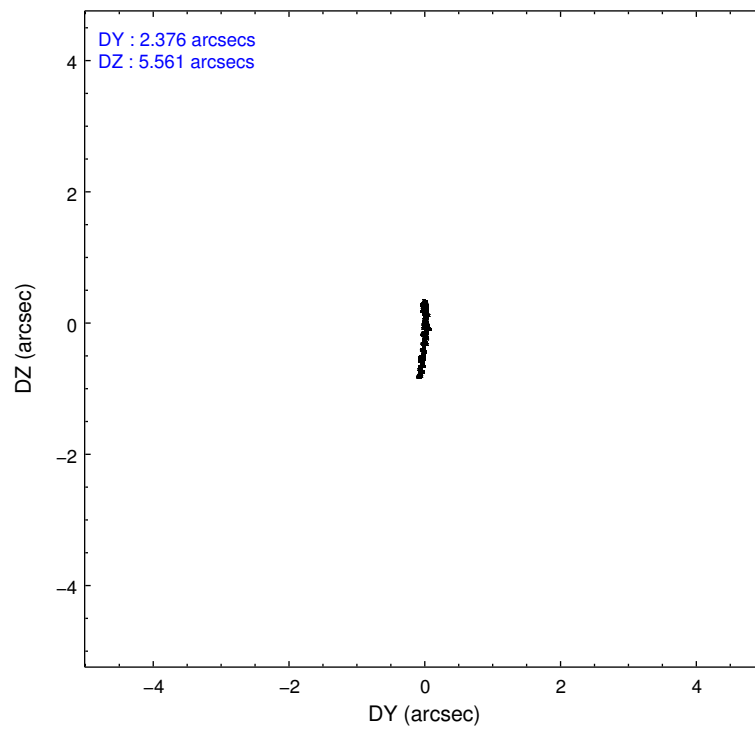
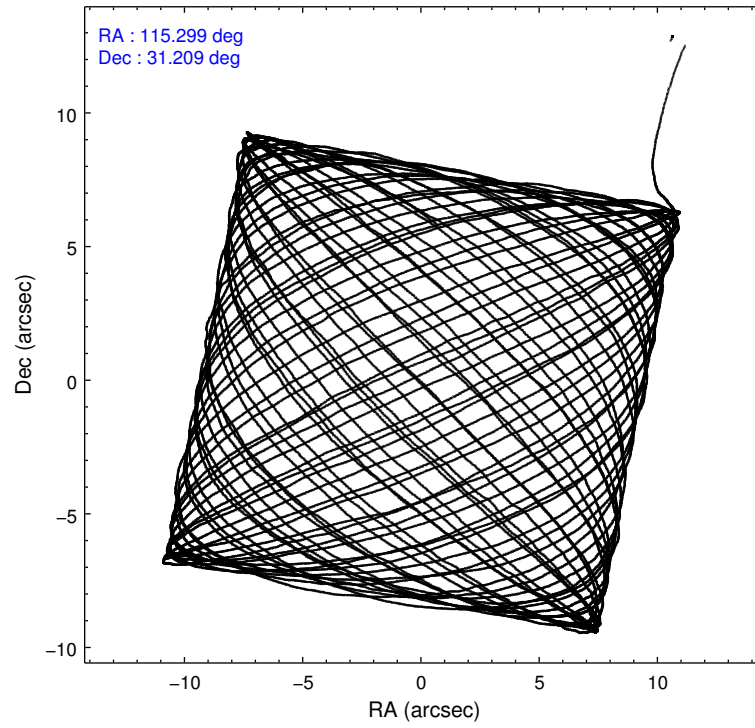
2.1.4 Events

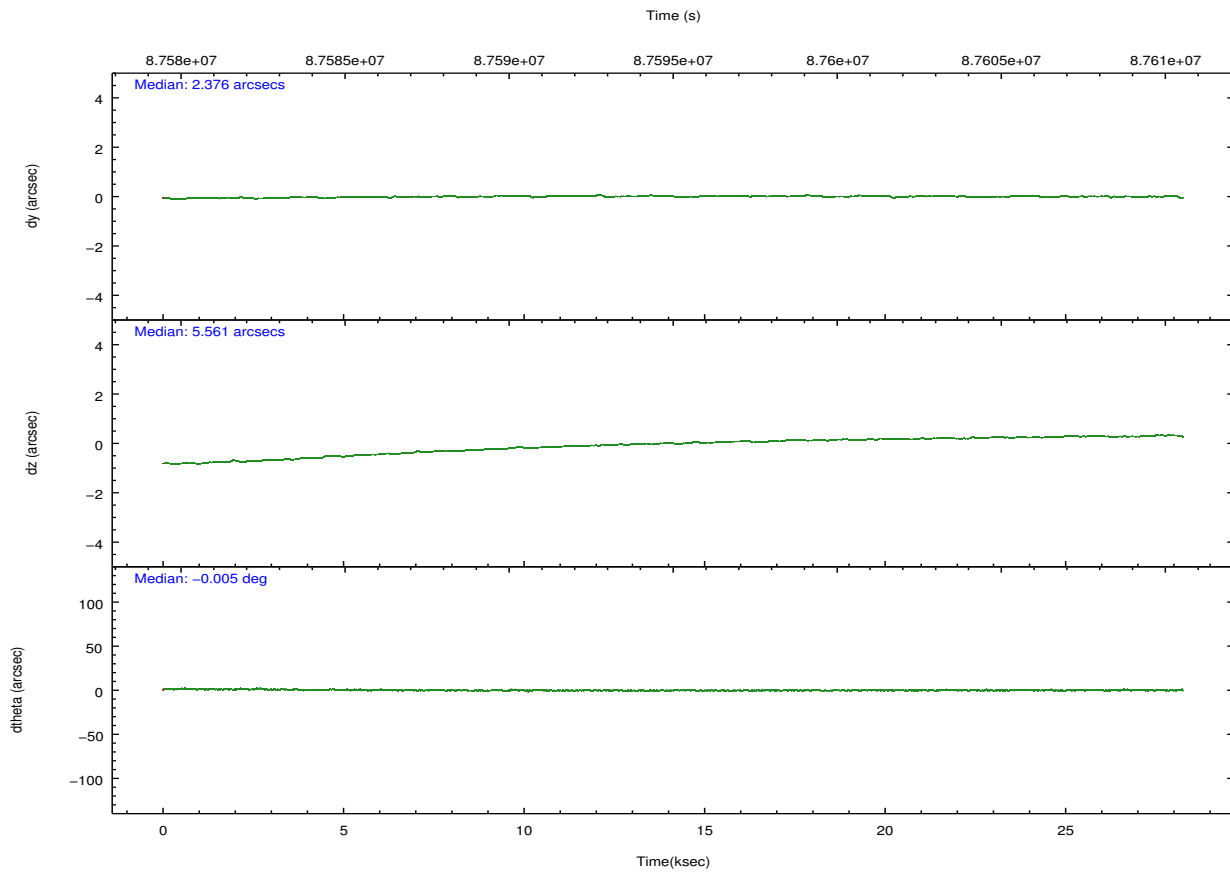
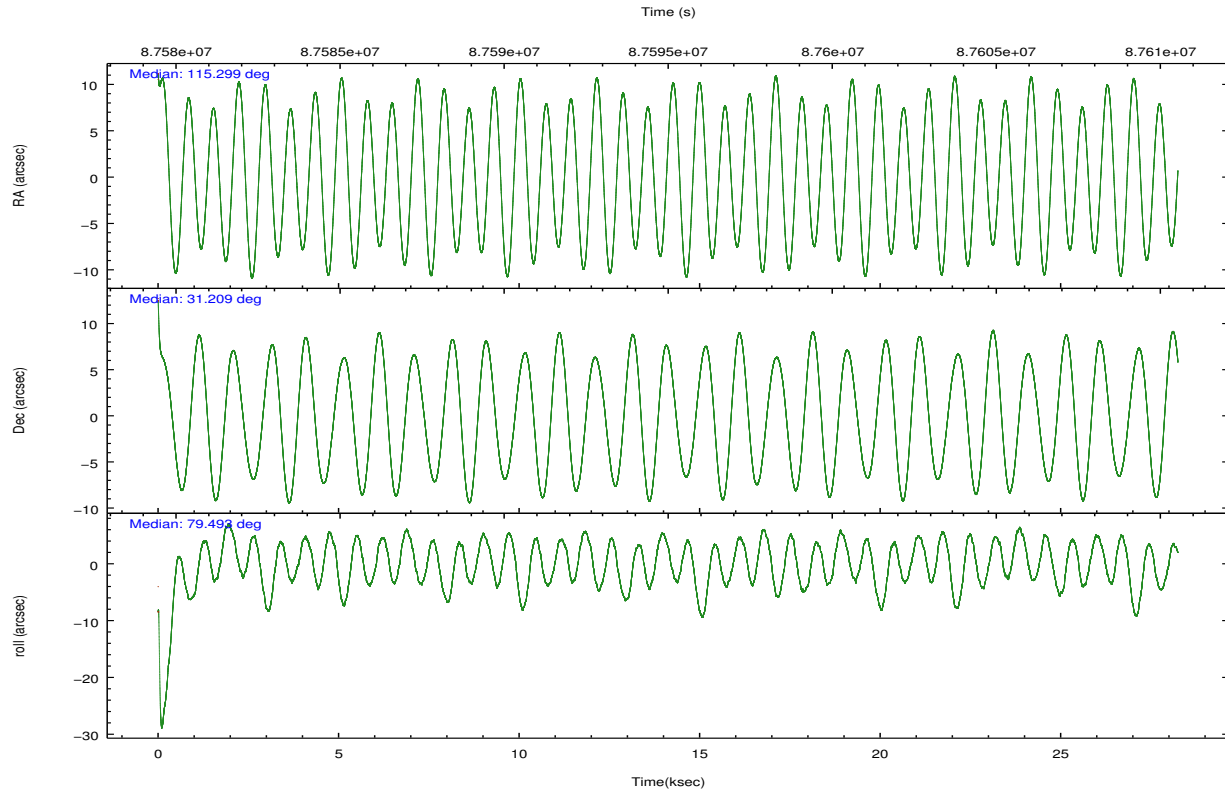
	ccd 2	ccd 3	ccd 5	ccd 6	ccd 7	ccd 8		ccd 2	ccd 3	ccd 5	ccd 6	ccd 7	ccd 8
level 1 events	174538	167046	237779	171269	216553	214940	grade 0 events	8227	8117	14847	7885	9462	12928
rejected events	155333	148229	127569	151927	124289	173721		4%	4%	6%	4%	4%	6%
rejected %	88%	88%	53%	88%	57%	80%	grade 1 events	81	75	493	78	256	121
								0%	0%	0%	0%	0%	0%
							grade 2 events	4074	3651	31355	3837	17929	8974
								2%	2%	13%	2%	8%	4%
							grade 3 events	1832	1909	4652	1946	8543	4408
								1%	1%	1%	1%	3%	2%
							grade 4 events	1822	1903	4476	1900	8619	4166
								1%	1%	1%	1%	3%	1%
							grade 5 events	5733	6111	17843	7014	20603	8748
								3%	3%	7%	4%	9%	4%
							grade 6 events	3252	3237	54889	3774	47722	10744
								1%	1%	23%	2%	22%	4%
							grade 7 events	149517	142043	109224	144835	103419	164851
								85%	85%	45%	84%	47%	76%

2.2 Compared Parameters

Parameter	Planned	Actual	Parameter	Planned	Actual
Instrument	ACIS	ACIS	Obspar format version number	7	7
Detector	ACIS-235678	ACIS-235678	Obspar file type	PREDICTED	ACTUAL
Grating	NONE	NONE	Obspar update status	NONE	UPDATED
Data mode	FAINT	FAINT	Number of optional ACIS chips dropped	0	0
Observation mode	POINTING	POINTING	On-chip summing requested	N	N
[deg] Pointing RA	115.309584	115.2987106835783	Subarray requested	NONE	NONE
[deg] Pointing Dec	31.183622	31.20935960681807	Alternating exposures requested	N	N
[deg] Pointing Roll	79.331784	79.49405240211306	[s] Primary exposure time	0.000000	3.2
[mm] SIM focus pos	-0.684267	-0.6828225247311905			
[mm] SIM defocus	0	0.001444936568705701			
[mm] SIM translation stage pos	-190.132523	-190.1425803651734			
[mm] SIM translation stage offset	0	0.01005778216563158			
[s] Observation start time (MET)	87581121.184000	87580112.743072			
Observation start date	2000-10-10T16:04:17	2000-10-10T15:48:32			
[s] Observation end time (MET)	87609121.184000	87609678.869188			
Observation end date	2000-10-10T23:50:57	2000-10-11T00:01:18			
Read mode	TIMED	TIMED			

2.3 Aspect



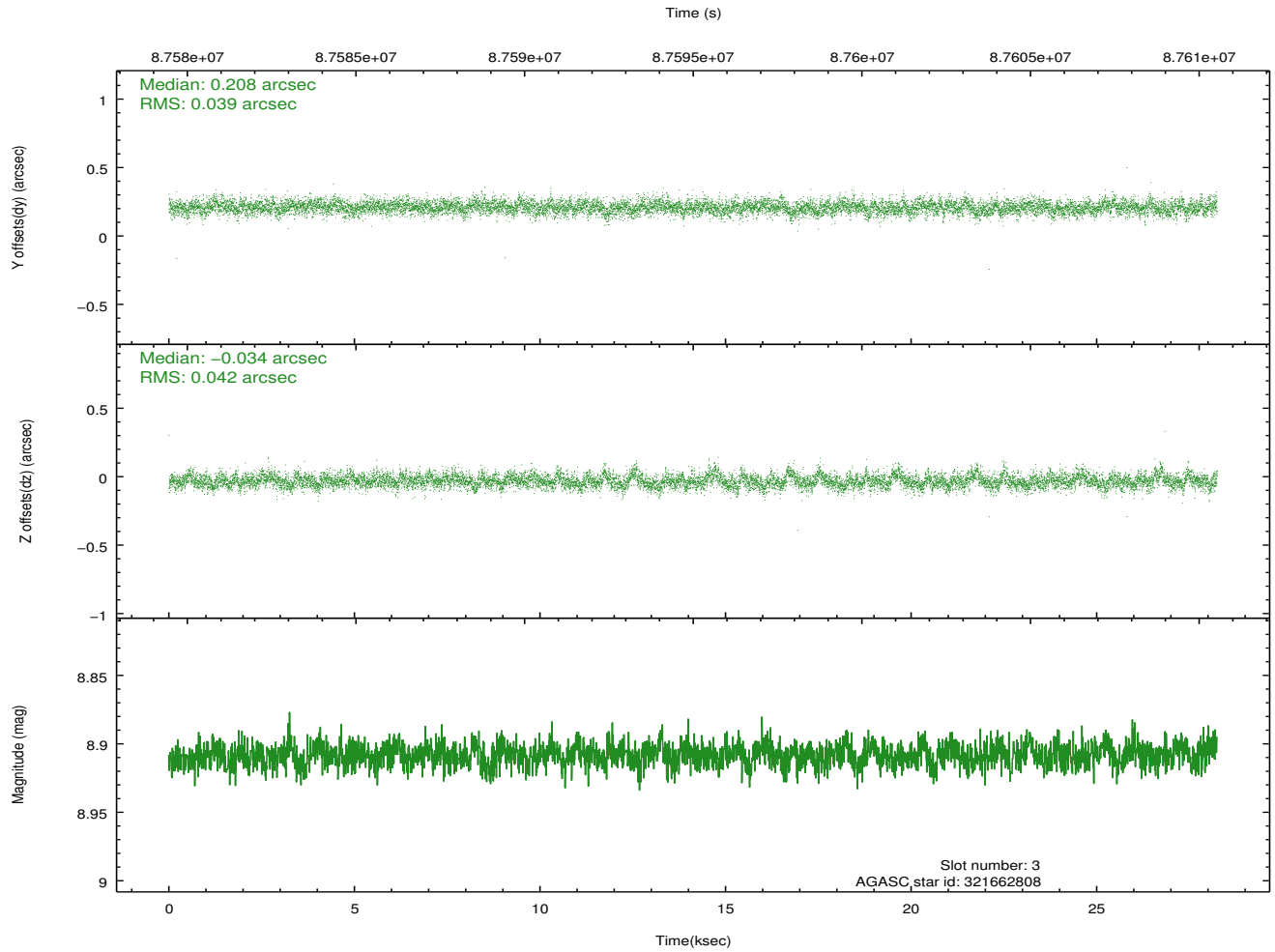
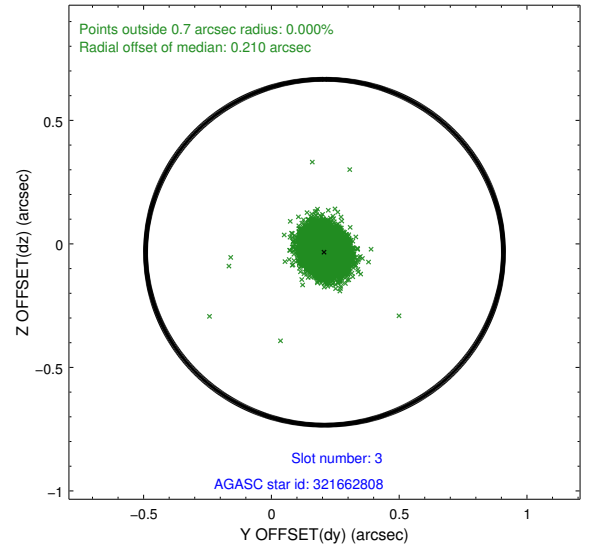
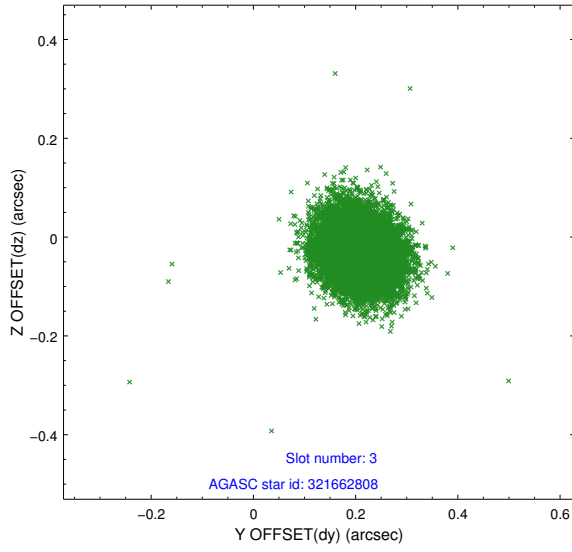


Slot Statistics

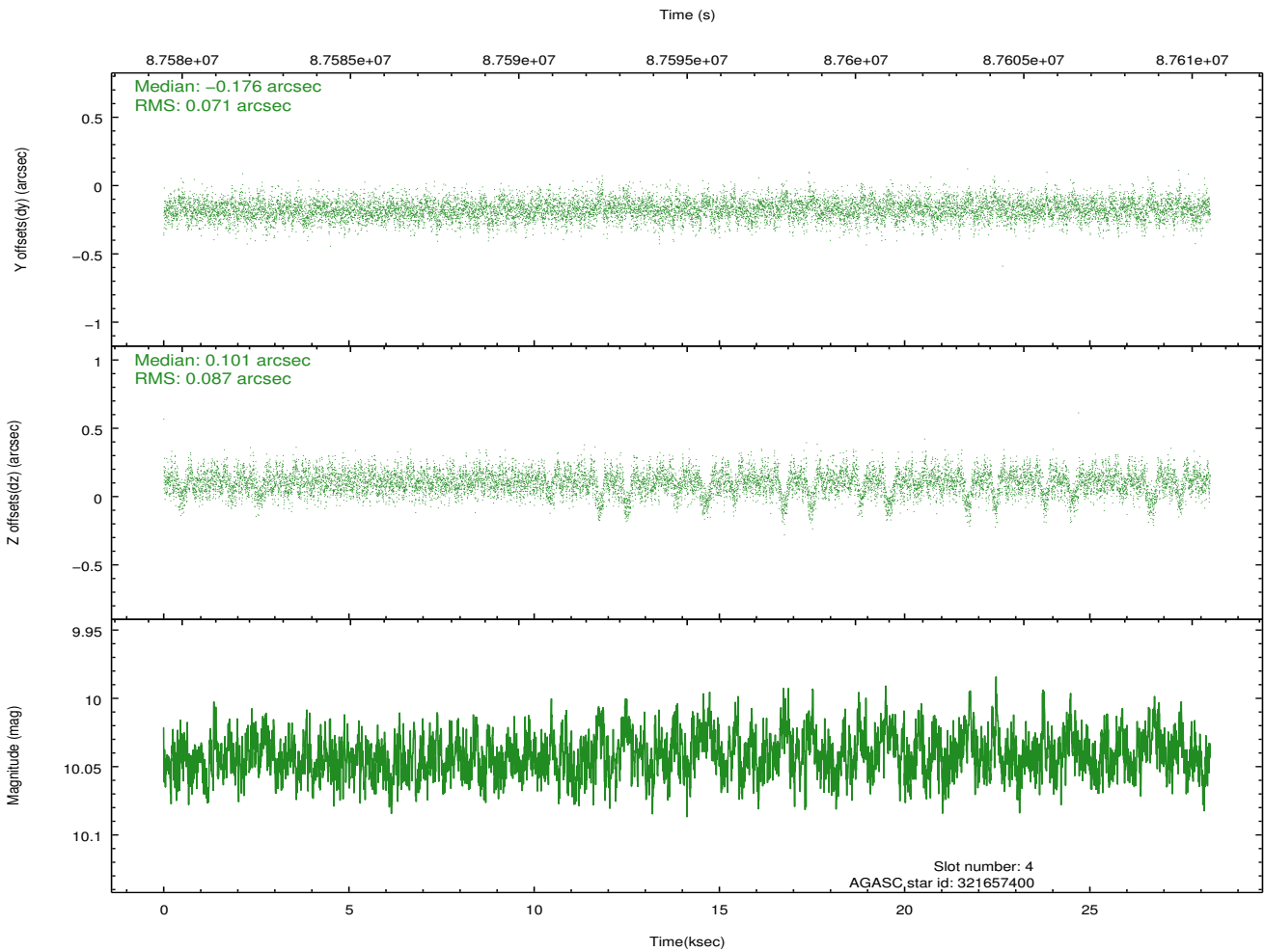
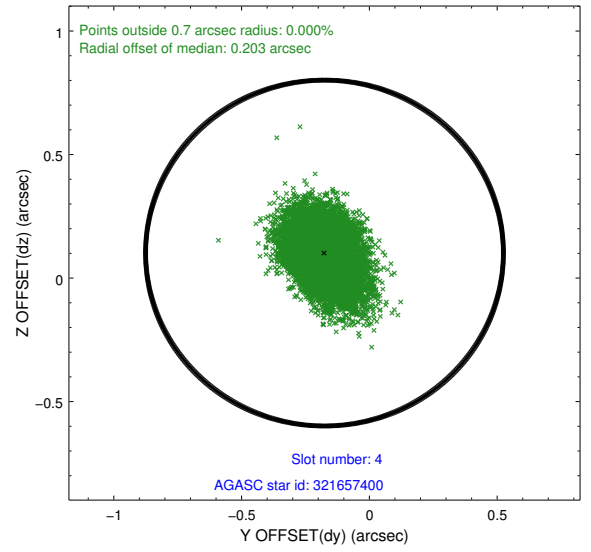
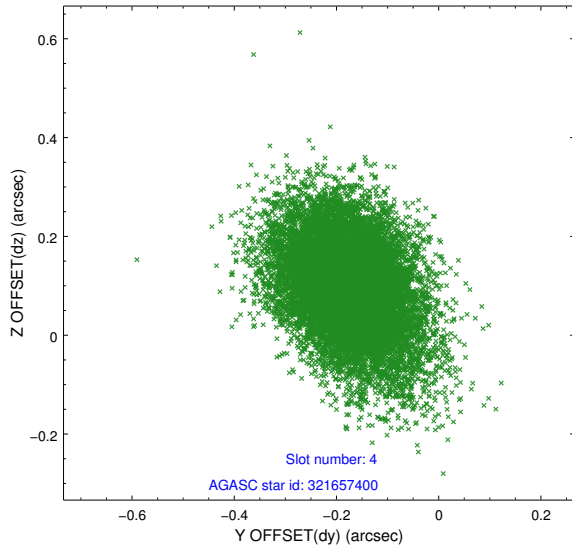
slot	status	id	mag	n_pts	med_dy	med_dz	dr1	dr2	ra	dec	mean_y	mean_z
0	FID	ACIS-S-2	7.11	6887	-0.043	-0.008	0.008	0.014	0.000000	0.000000	-755.01	-1726.55
1	FID	ACIS-S-4	7.20	6889	0.003	0.023	0.006	0.011	0.000000	0.000000	2158.24	181.92
2	FID	ACIS-S-5	7.24	6889	0.009	-0.007	0.008	0.015	0.000000	0.000000	-1807.72	175.60
3	GUIDE	321662808	8.91	13776	0.208	-0.034	0.060	0.099	115.327364	30.555402	-2211.27	-472.39
4	GUIDE	321657400	10.04	13768	-0.176	0.101	0.116	0.200	115.976752	31.630046	1964.55	-1710.47
5	GUIDE	321660408	9.11	13774	-0.021	-0.047	0.072	0.116	115.631265	31.237893	377.66	-936.26
6	GUIDE	321657600	9.35	13776	-0.010	-0.022	0.088	0.146	115.781018	31.243330	483.72	-1385.15
7	OMITTED		0.00	0	0.000	0.000	0.000	0.000	0.000000	0.000000	0.00	0.00

2.4 Star Slots

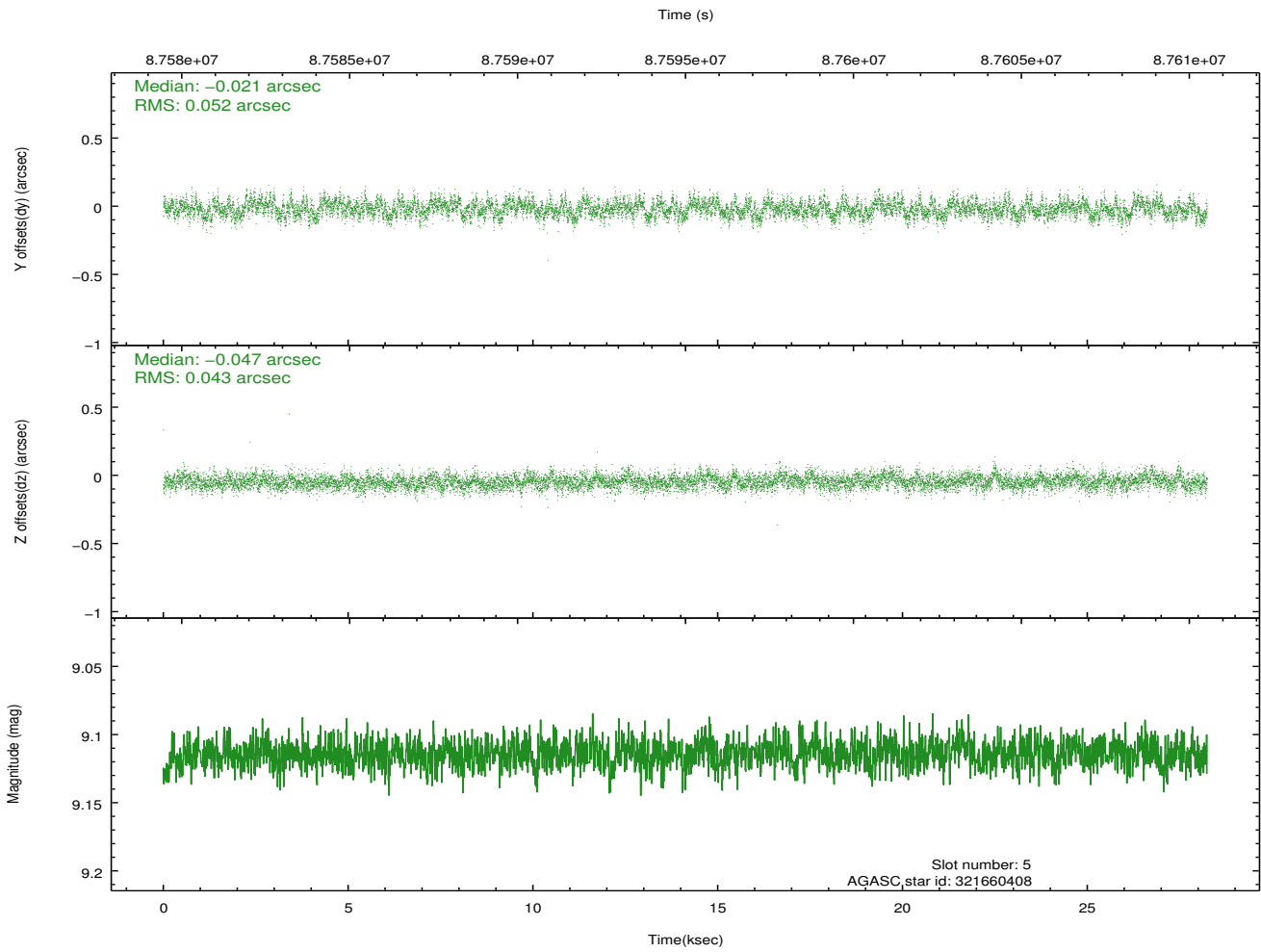
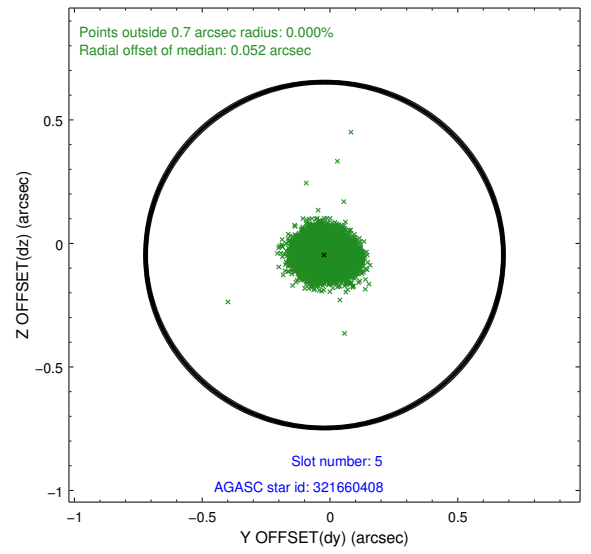
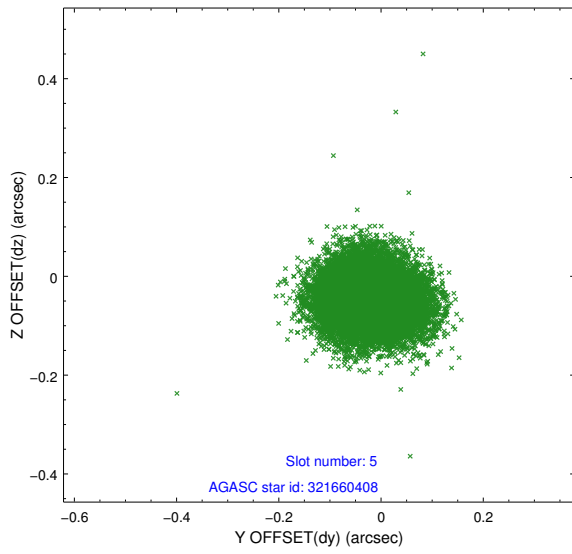
2.4.1 Slot 3



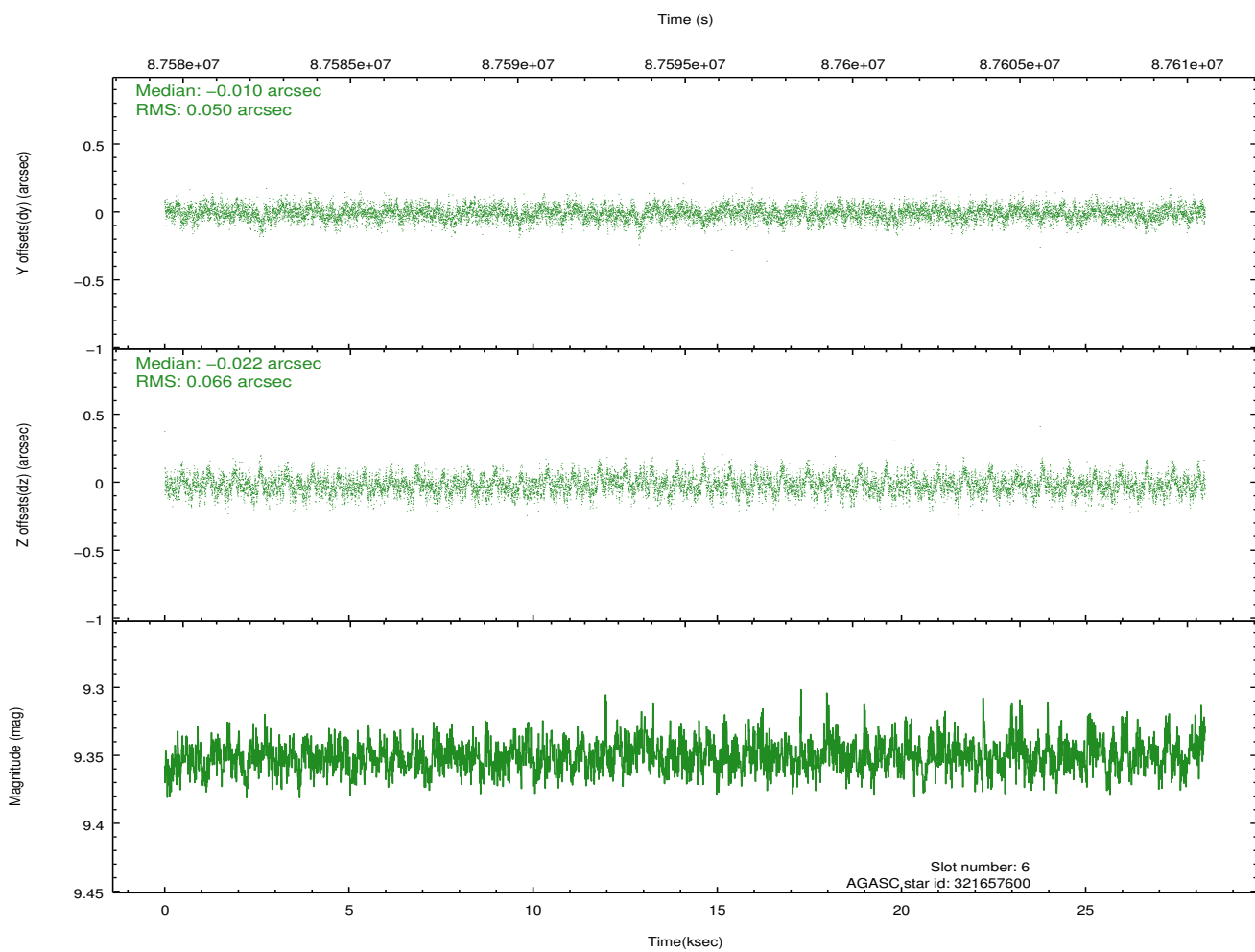
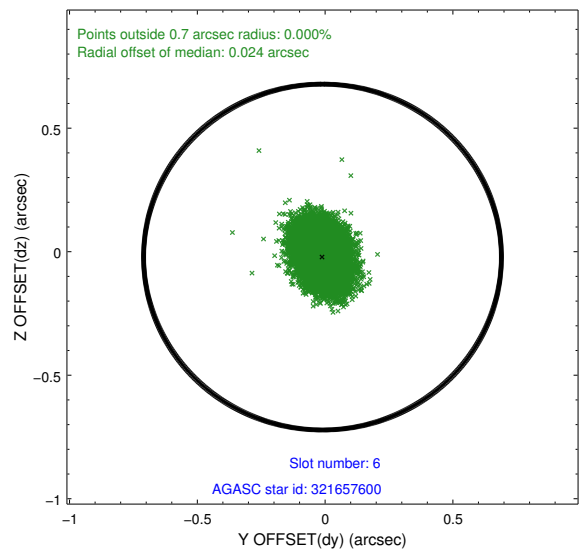
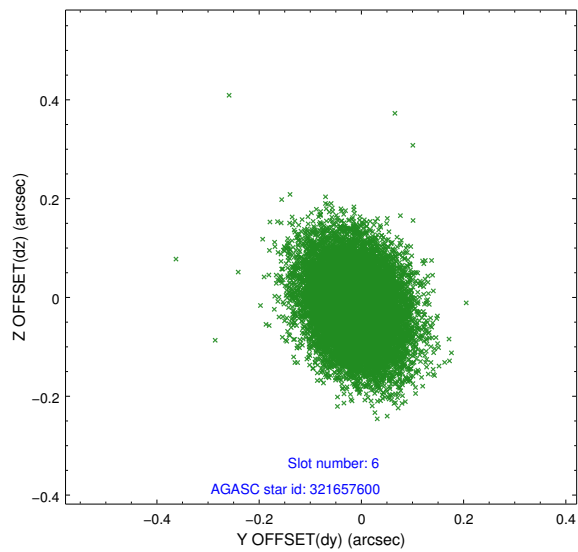
2.4.2 Slot 4



2.4.3 Slot 5

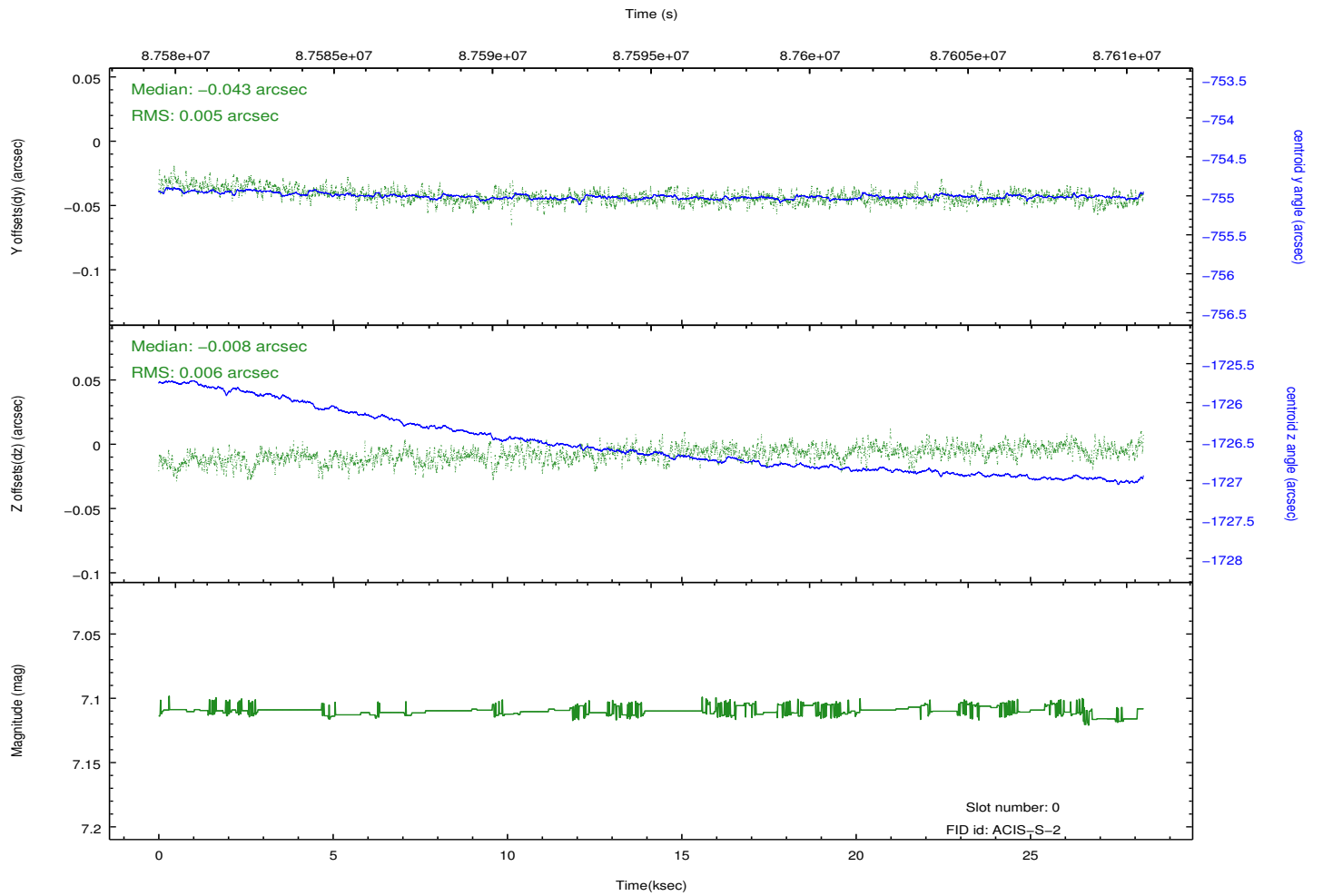
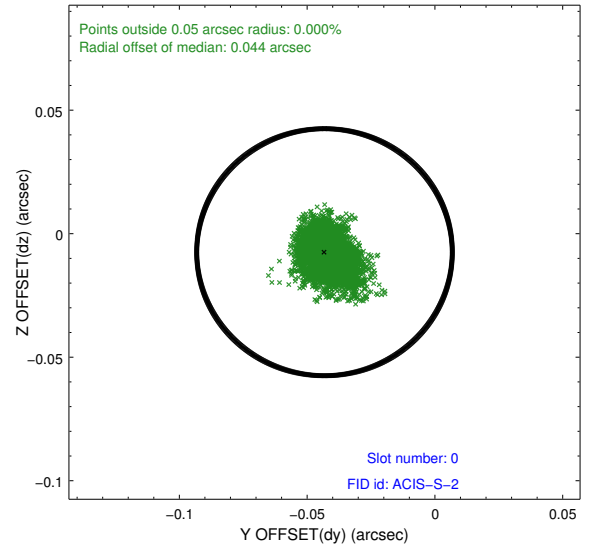
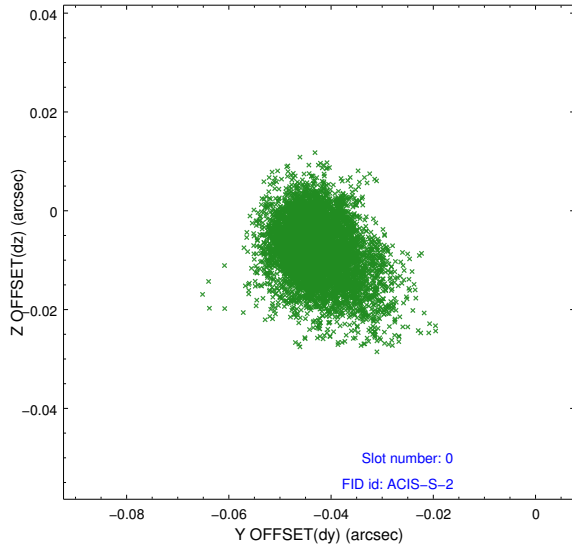


2.4.4 Slot 6

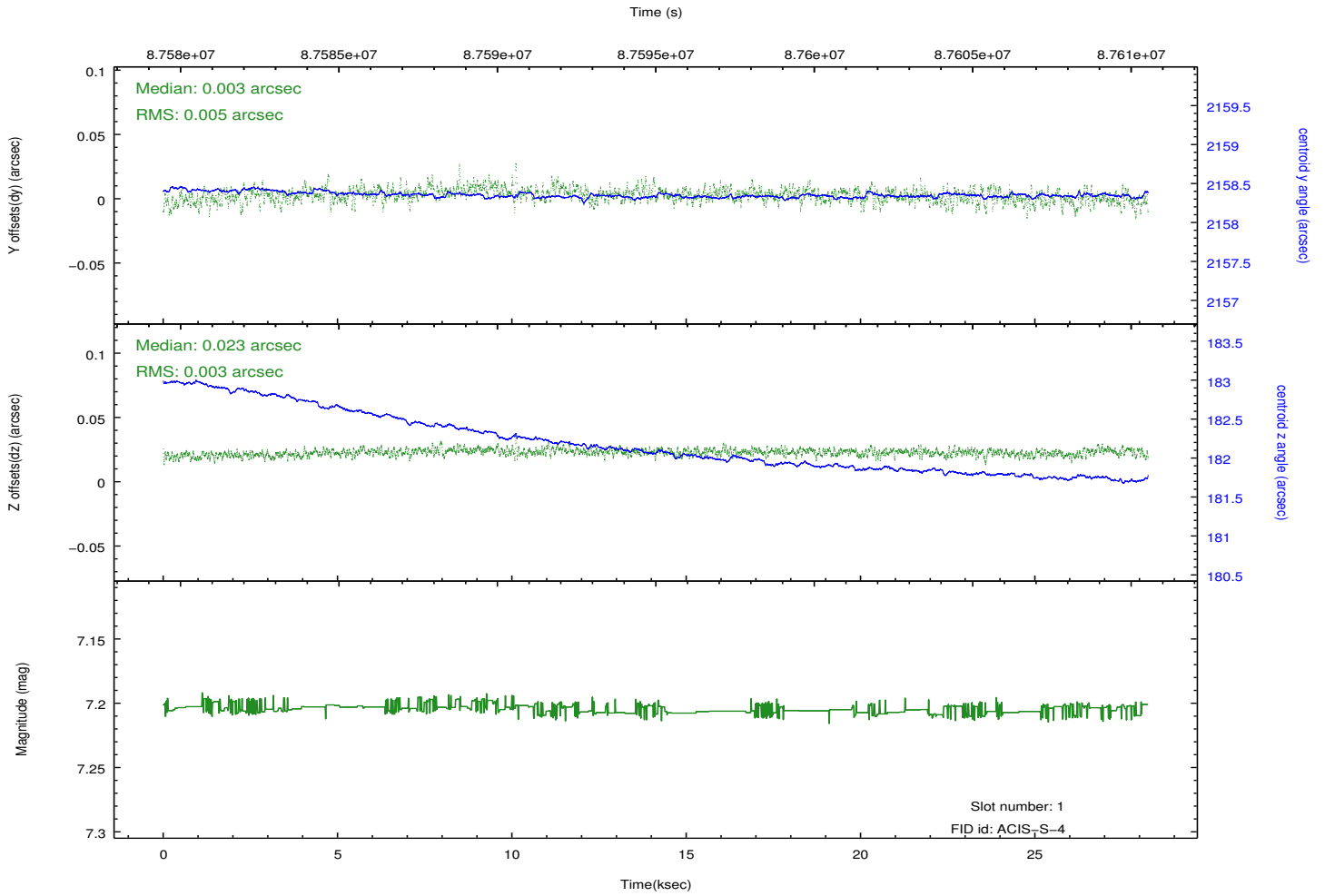
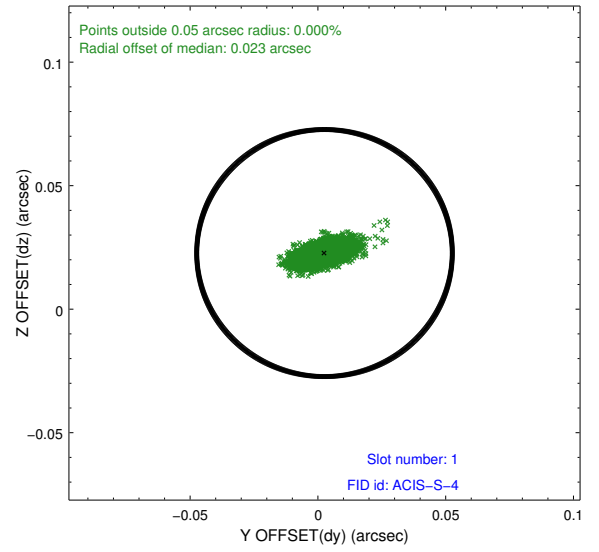
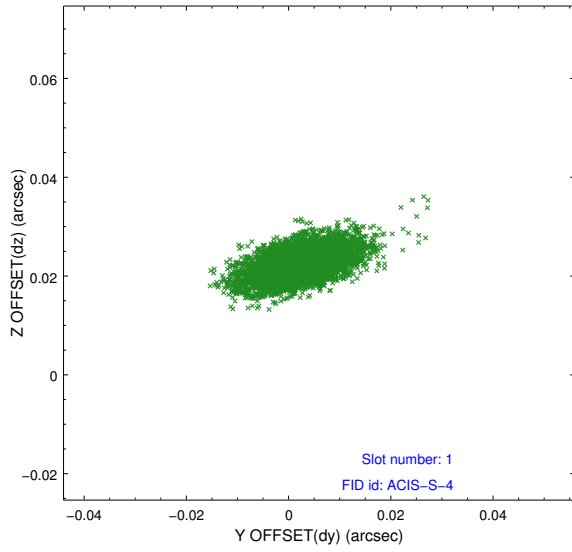


2.5 FID Slots

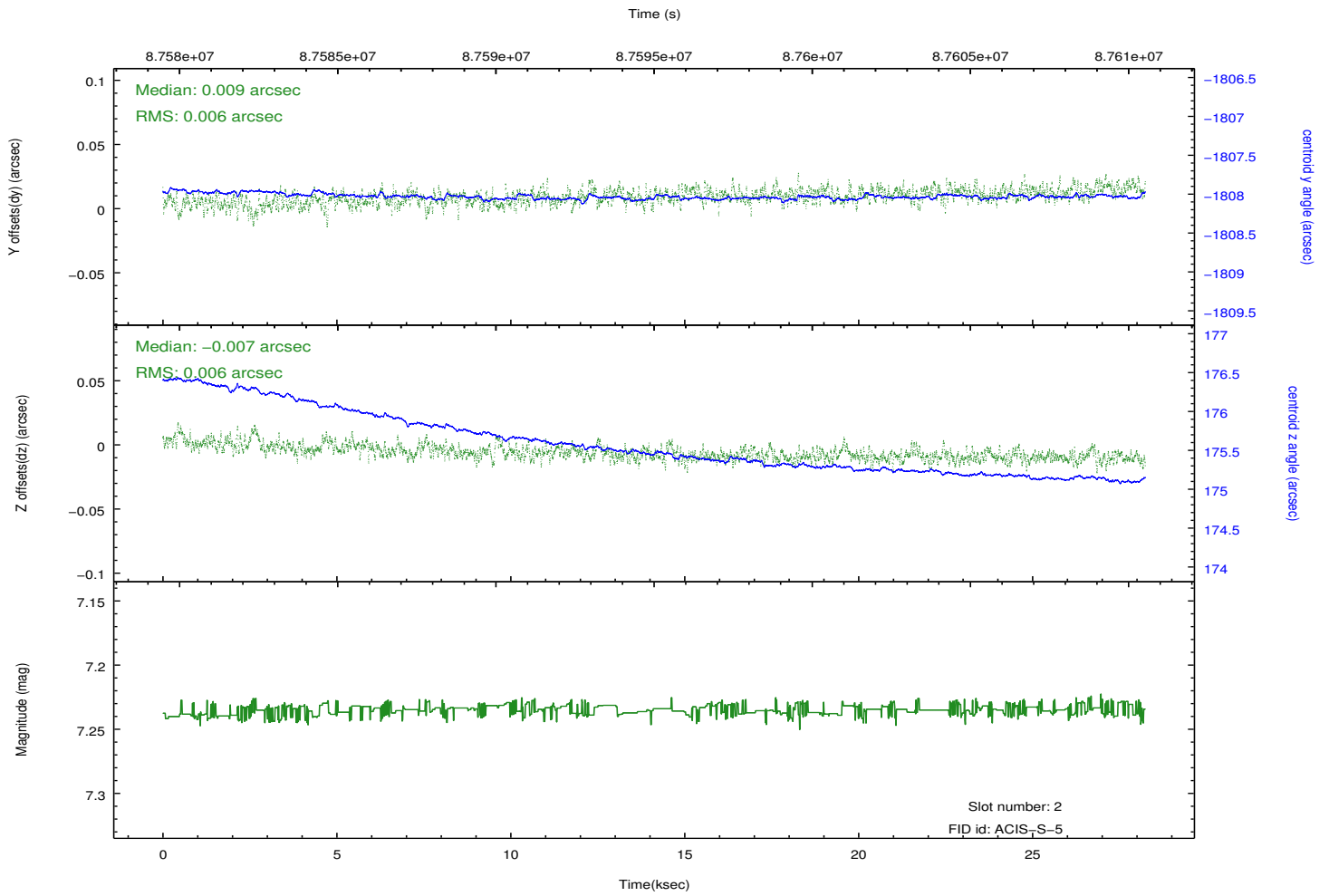
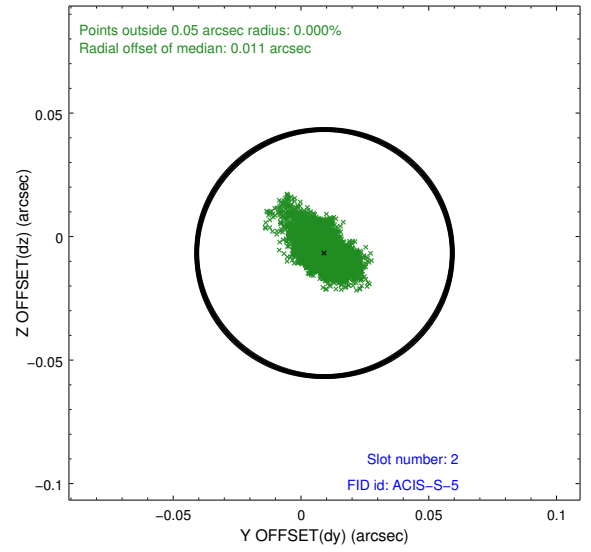
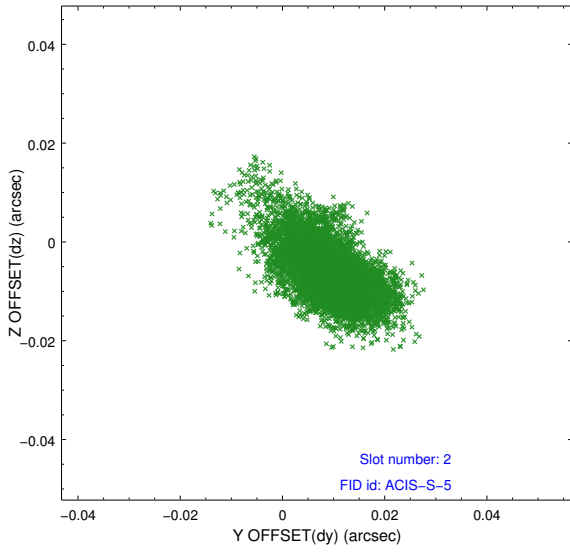
2.5.1 Slot 0



2.5.2 Slot 1



2.5.3 Slot 2



A Summary

A.1 Status

V&V Scientist	Jen Lauer
V&V Date (YYYY-MM-DD)	2012.09.20
V&V Edition	1
V&V Disposition and Status	OK
V&V Charge Time	28

A.2 Comments

Charge time for this ObsId remains at previous value of 28 ks although with the current processing the charge time would have been 27.95 ksec.

=====

The guide star in slot 7 was removed from the aspect solution due to poor data quality. The aspect solution is improved by the removal of this guide star from the solution.