

V&V Reference Report

L2 ASCDS Version : 8.4.5

Observation 3927 - L2 Version 3
Chandra X-Ray Center

L2 Processing Date : Nov 1 2012

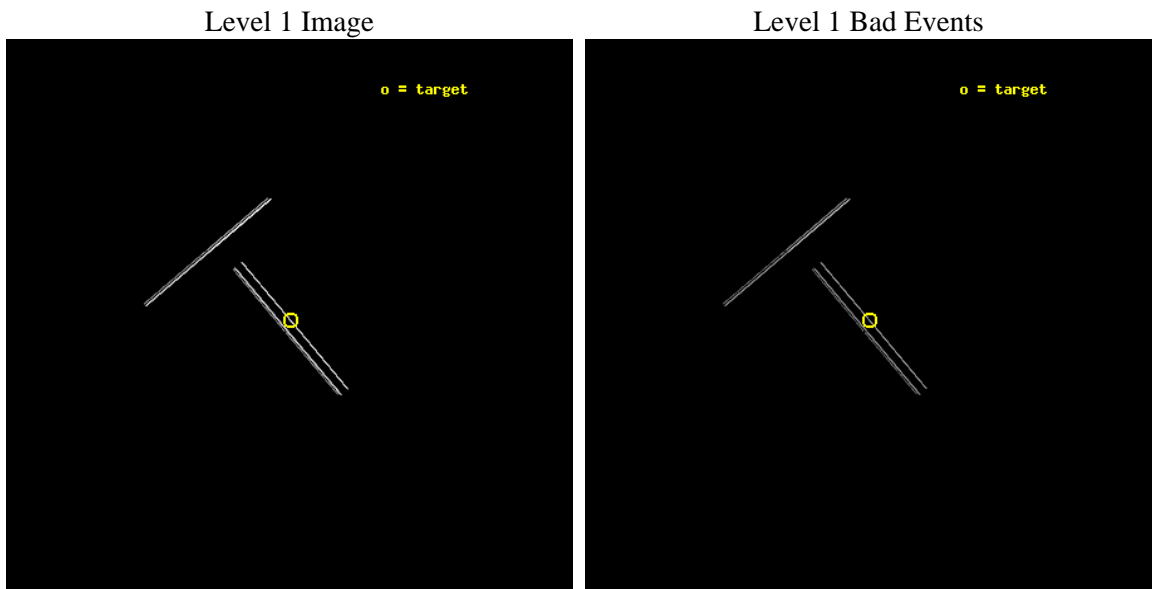
Contents

1	Front	2
2	OBI	3
2.1	OBI	3
2.1.1	Images	3
2.1.2	Bias	3
2.1.3	Parameters	4
2.1.4	Events	4
2.2	Compared Parameters	5
2.3	Aspect	6
2.4	Star Slots	9
2.4.1	Slot 3	9
2.4.2	Slot 4	10
2.4.3	Slot 5	11
2.4.4	Slot 6	12
2.4.5	Slot 7	13
2.5	FID Slots	14
2.5.1	Slot 0	14
2.5.2	Slot 1	15
2.5.3	Slot 2	16
A	Summary	17
A.1	Status	17
A.2	Comments	17

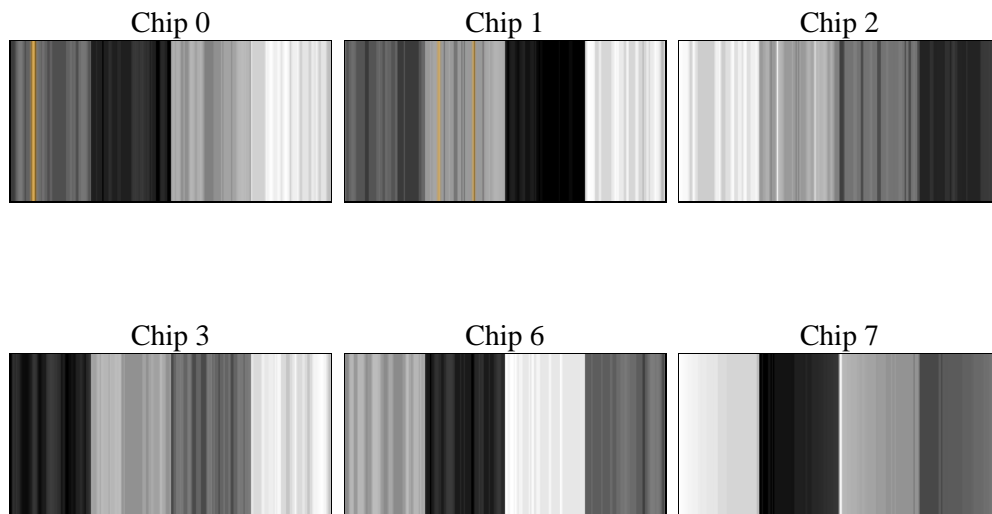
2 OBI

2.1 OBI

2.1.1 Images



2.1.2 Bias



2.1.3 Parameters

obi_num	0	Obi number	sched_exp_time	29667.000000	[s] Scheduled observation exposure time
ascdsver	8.4.5	Processing system revision	ontime	29850.75	Sum of GTIs [s]
caldbver	4.5.2	 	ontime0	29850.75	Sum of GTIs [s]
date	2012-11-01T04:25:03	Date and time of file creation	ontime1	29850.75	Sum of GTIs [s]
revision	3	Processing version of data	ontime2	29850.75	Sum of GTIs [s]
			ontime3	29850.75	Sum of GTIs [s]
			ontime6	29850.75	Sum of GTIs [s]
			ontime7	29850.75	Sum of GTIs [s]
			l1events	230512	Number of level 1 events

2.1.4 Events

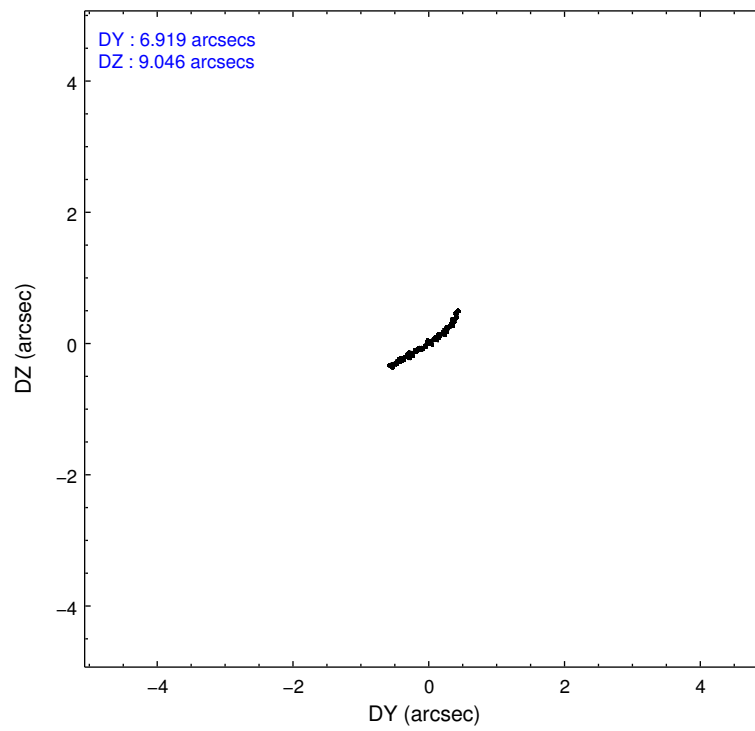
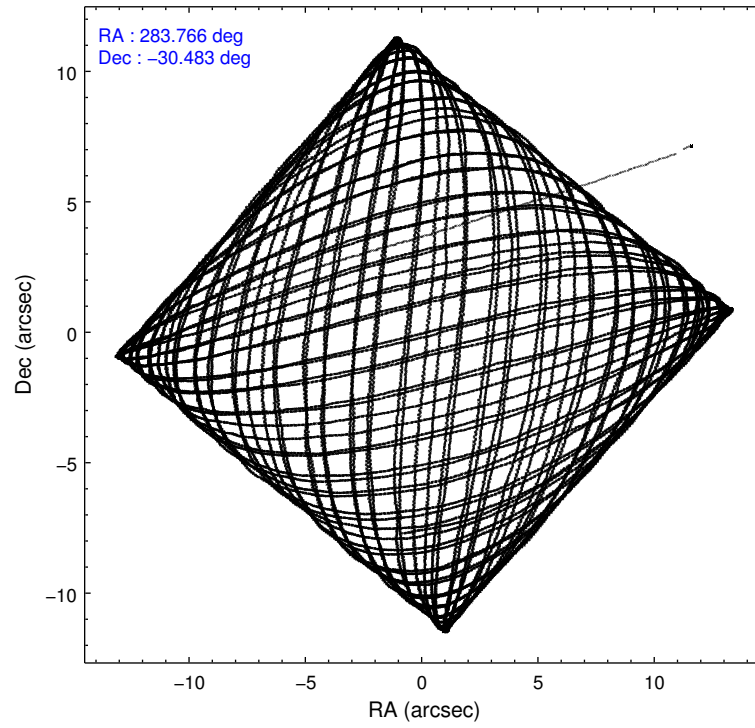
	ccd 0	ccd 1	ccd 2	ccd 3	ccd 6	ccd 7
level 1 events	28550	28419	27307	30299	29469	86468
rejected events	5824	5998	5326	6267	6266	17933
rejected %	20%	21%	19%	20%	21%	20%

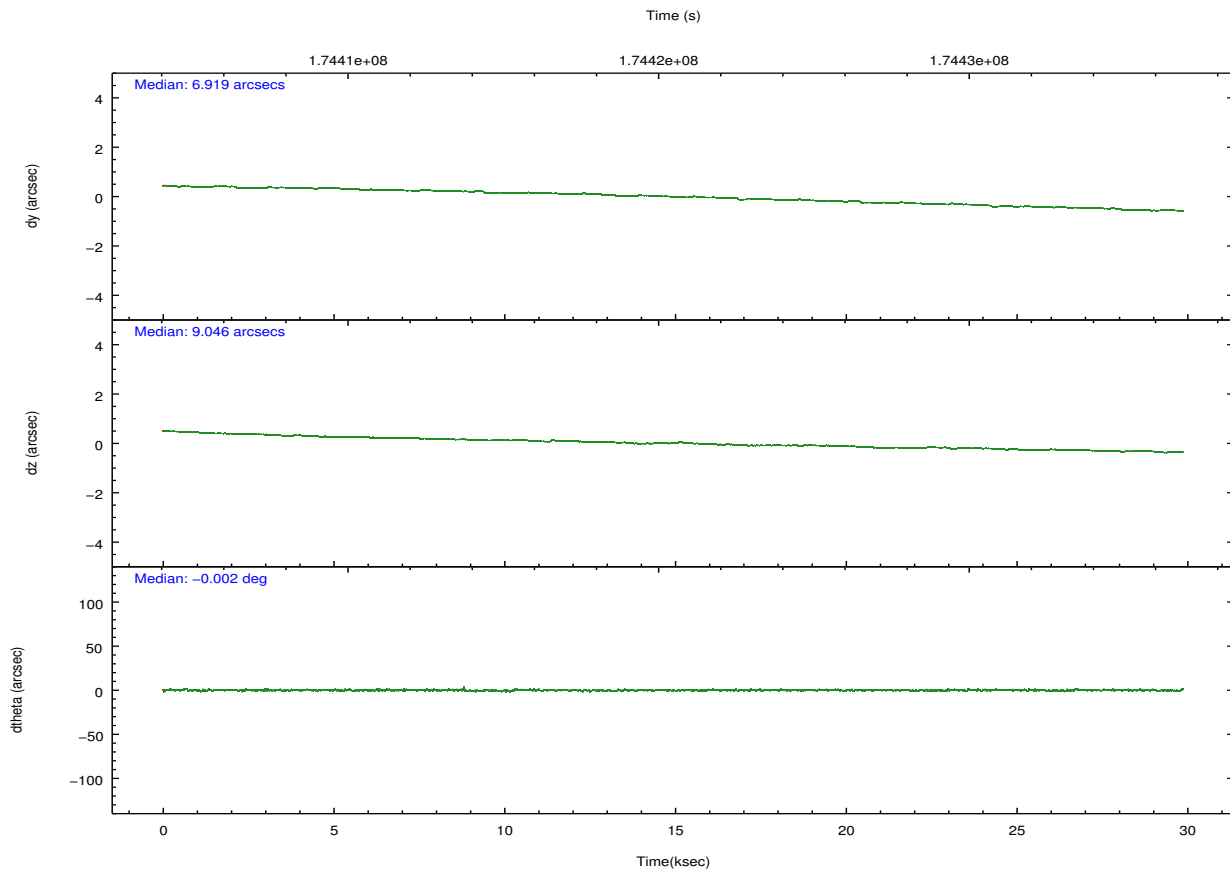
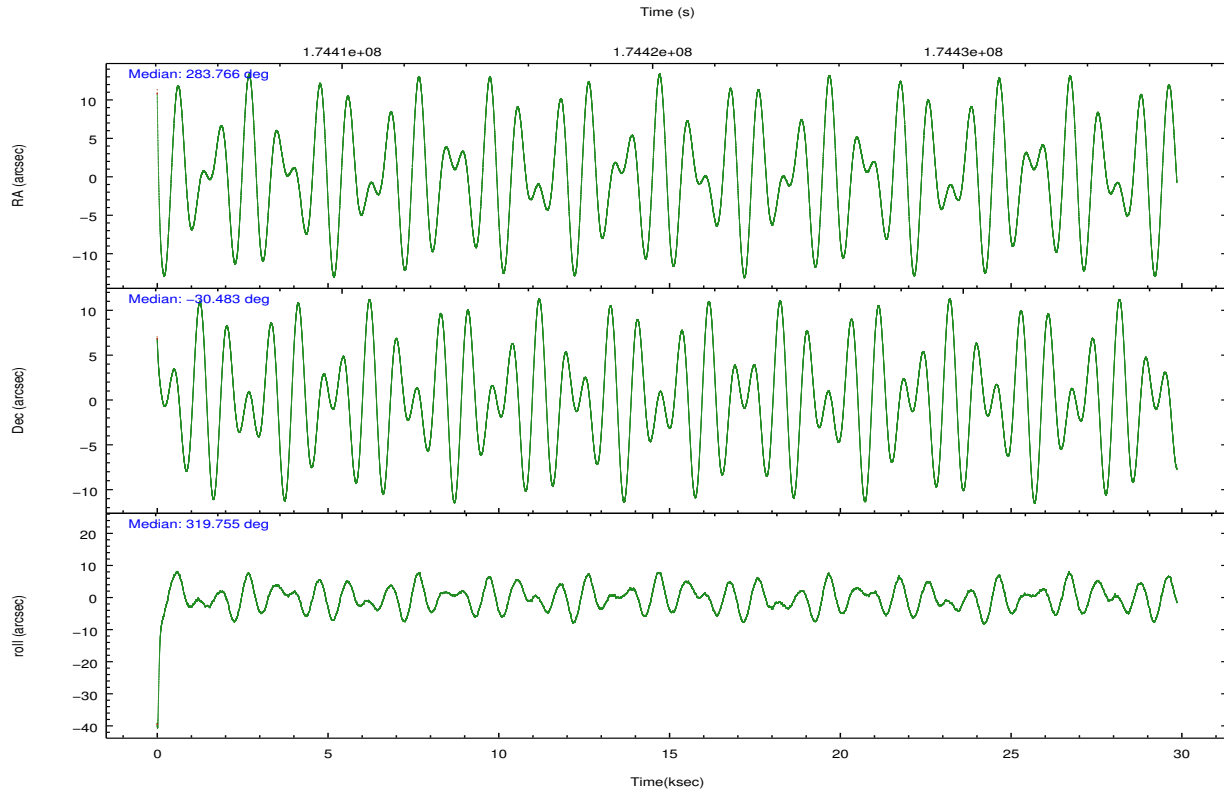
	ccd 0	ccd 1	ccd 2	ccd 3	ccd 6	ccd 7
grade 0 events	3813	3045	3804	3841	3041	10219
	13%	10%	13%	12%	10%	11%
grade 1 events	117	115	119	129	106	287
	0%	0%	0%	0%	0%	0%
grade 2 events	7209	8208	7331	7853	8359	16769
	25%	28%	26%	25%	28%	19%
grade 3 events	4320	3595	4019	4896	4024	7667
	15%	12%	14%	16%	13%	8%
grade 4 events	4020	3570	3991	4136	3864	7751
	14%	12%	14%	13%	13%	8%
grade 5 events	4877	5036	4326	5229	5209	15055
	17%	17%	15%	17%	17%	17%
grade 6 events	4190	4827	3717	4215	4866	28720
	14%	16%	13%	13%	16%	33%
grade 7 events	4	23	0	0	0	0
	0%	0%	0%	0%	0%	0%

2.2 Compared Parameters

Parameter	Planned	Actual	Parameter	Planned	Actual
Instrument	ACIS	ACIS	Obspar format version number	7	7
Detector	ACIS-012367	ACIS-012367	Obspar file type	PREDICTED	ACTUAL
Grating	NONE	NONE	Obspar update status	NONE	UPDATED
Data mode	CC33_FAINT	CC33_FAINT	Number of optional ACIS chips dropped	0	0
Observation mode	POINTING	POINTING	On-chip summing requested	N	N
[deg] Pointing RA	283.734884	283.7661916183228	Subarray requested	NONE	NONE
[deg] Pointing Dec	-30.477989	-30.48275880684589	Alternating exposures requested	N	N
[deg] Pointing Roll	319.535814	319.7603608316512	[s] Primary exposure time	0.000000	0
[mm] SIM focus pos	-0.782348	-0.7809083437167272			
[mm] SIM defocus	0	0.001439871863259334			
[mm] SIM translation stage pos	-233.592463	-233.5874344608287			
[mm] SIM translation stage offset	0	-0.005018542100998502			
[s] Observation start time (MET)	174405724.184000	174404372.53193			
Observation start date	2003-07-12T14:01:00	2003-07-12T13:39:32			
[s] Observation end time (MET)	174435391.184000	174435803.13327			
Observation end date	2003-07-12T22:15:27	2003-07-12T22:23:23			
Read mode	CONTINUOUS	CONTINUOUS			

2.3 Aspect





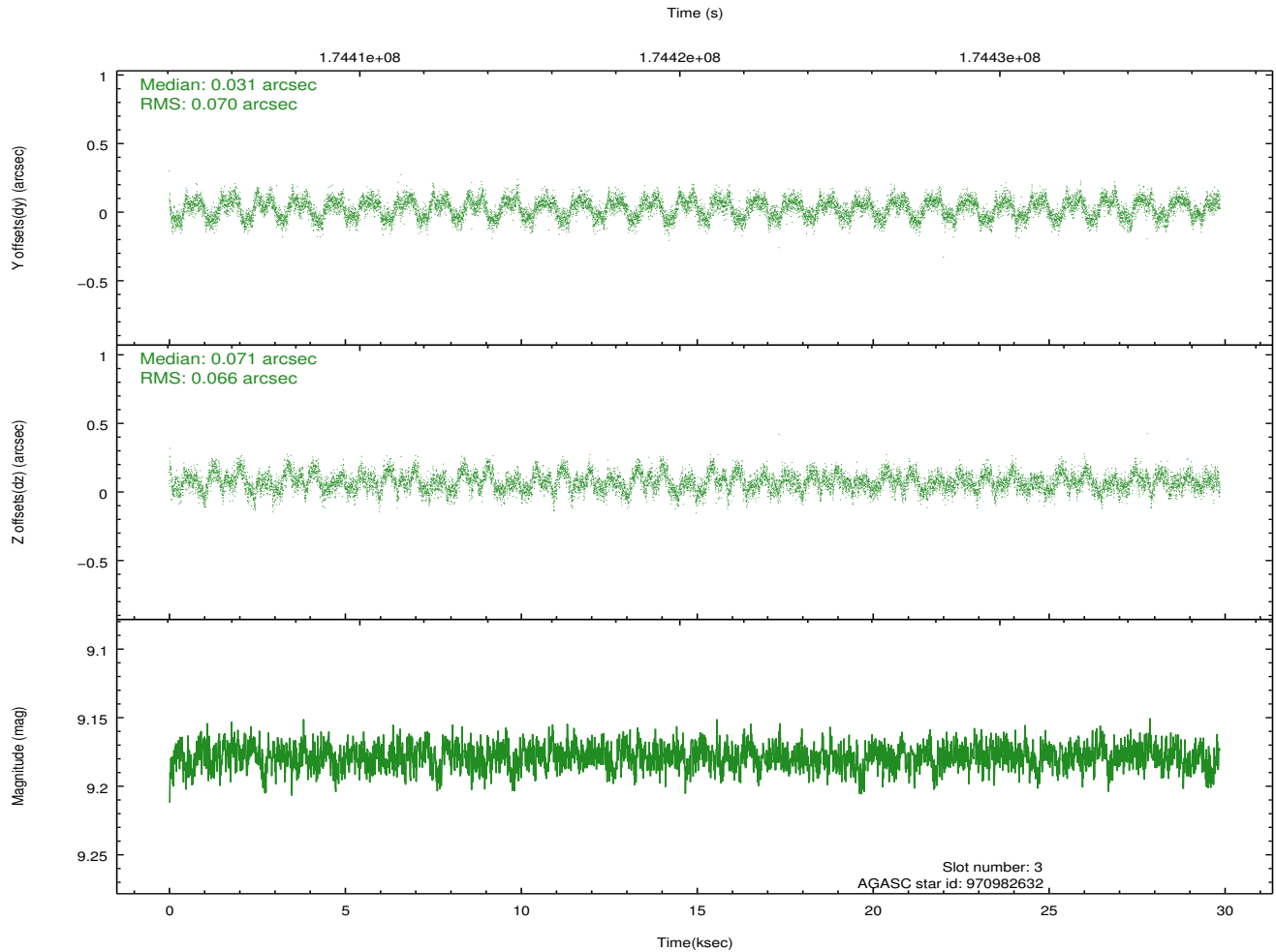
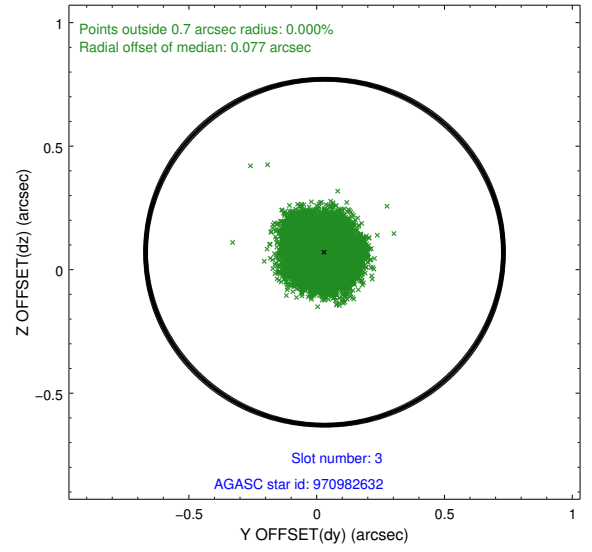
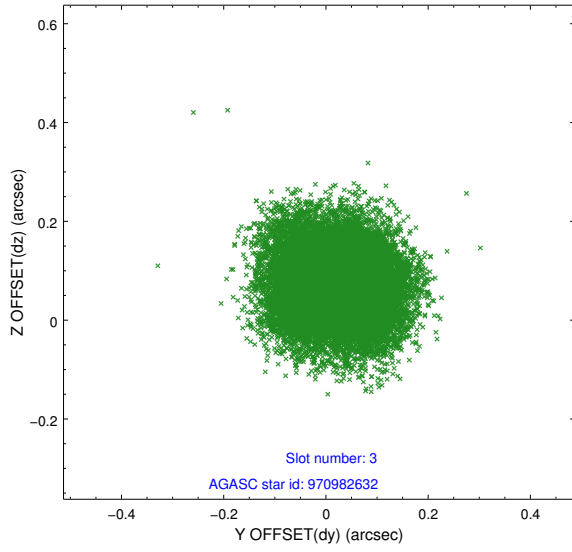
Slot Statistics

slot	status	id	mag	n_pts	med_dy	med_dz	dr1	dr2	ra	dec	mean_y	mean_z
0	FID	ACIS-I-1	7.24	7282	-0.032	0.041	0.009	0.015	0.000000	0.000000	932.76	-832.47
1	FID	ACIS-I-4	7.18	7277	0.114	0.010	0.019	0.029	0.000000	0.000000	2153.00	1067.26
2	FID	ACIS-I-5	7.23	7283	-0.178	0.019	0.015	0.024	0.000000	0.000000	-1815.28	1065.23
3	GUIDE	970982632	9.18	14558	0.031	0.071	0.104	0.160	283.374383	-30.393964	-1046.35	-497.50
4	GUIDE	970985080	9.11	14554	-0.056	-0.063	0.075	0.118	283.424526	-30.089228	-1642.66	436.39
5	GUIDE	971126256	9.51	14555	0.060	-0.075	0.098	0.163	283.803774	-31.323306	2136.77	-2177.57
6	GUIDE	971127272	8.81	14562	0.045	0.003	0.067	0.109	283.656908	-30.154752	-939.25	727.74
7	GUIDE	971128184	9.43	14557	-0.074	0.064	0.101	0.167	283.873308	-31.233017	2088.91	-1791.22

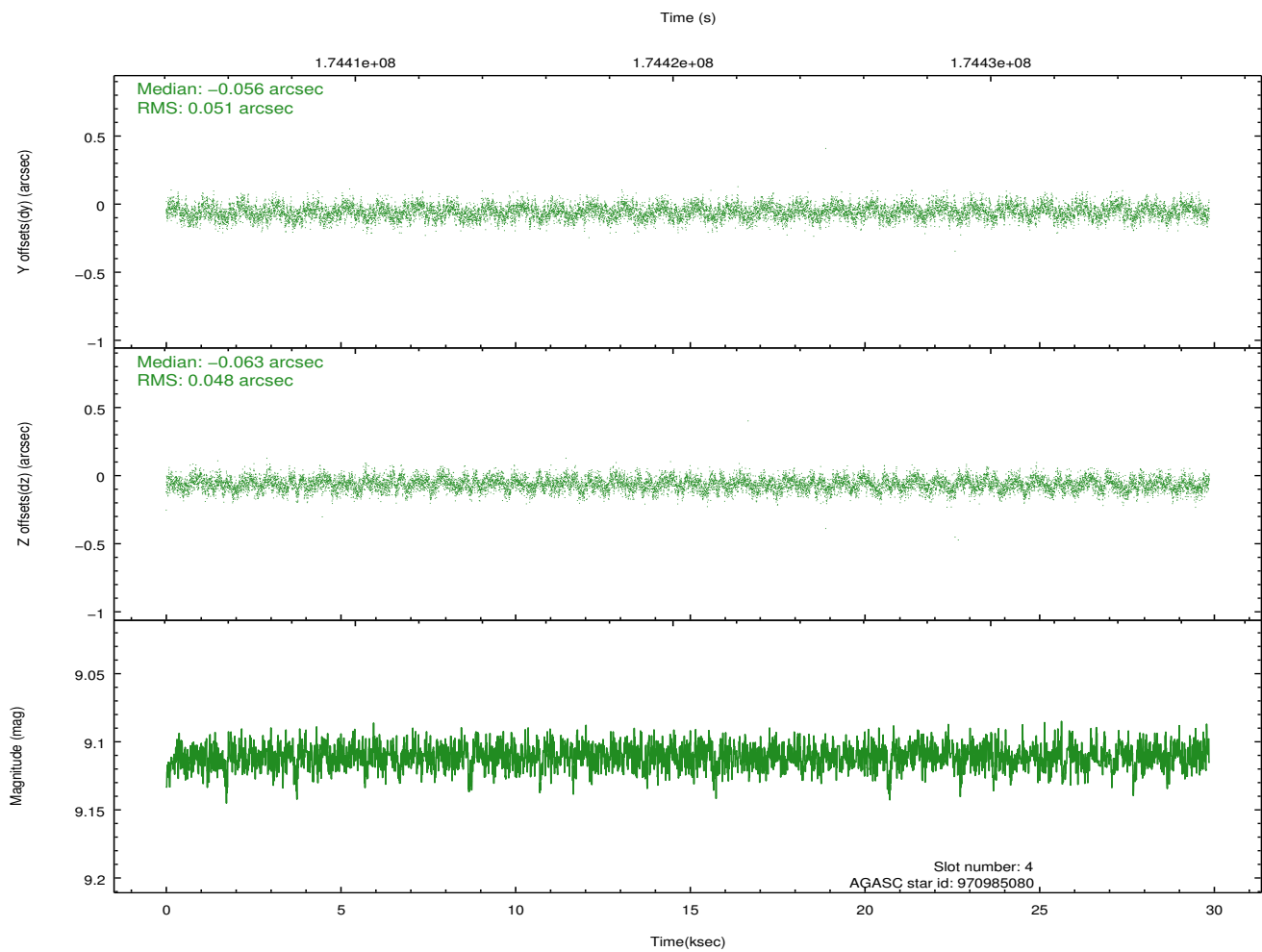
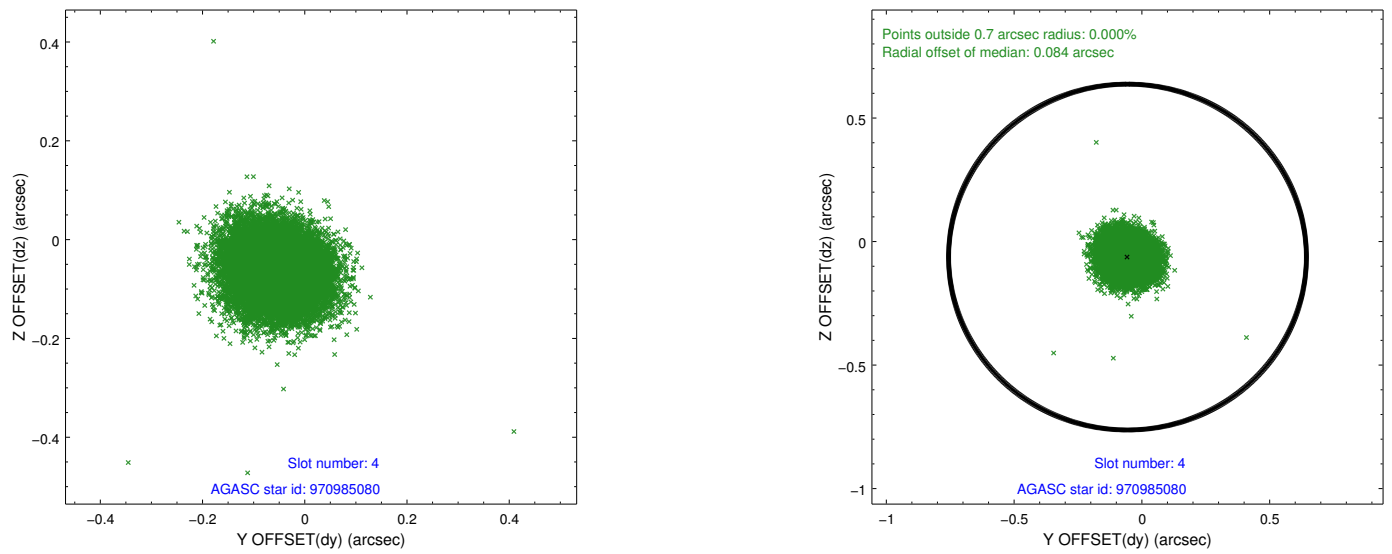
∞

2.4 Star Slots

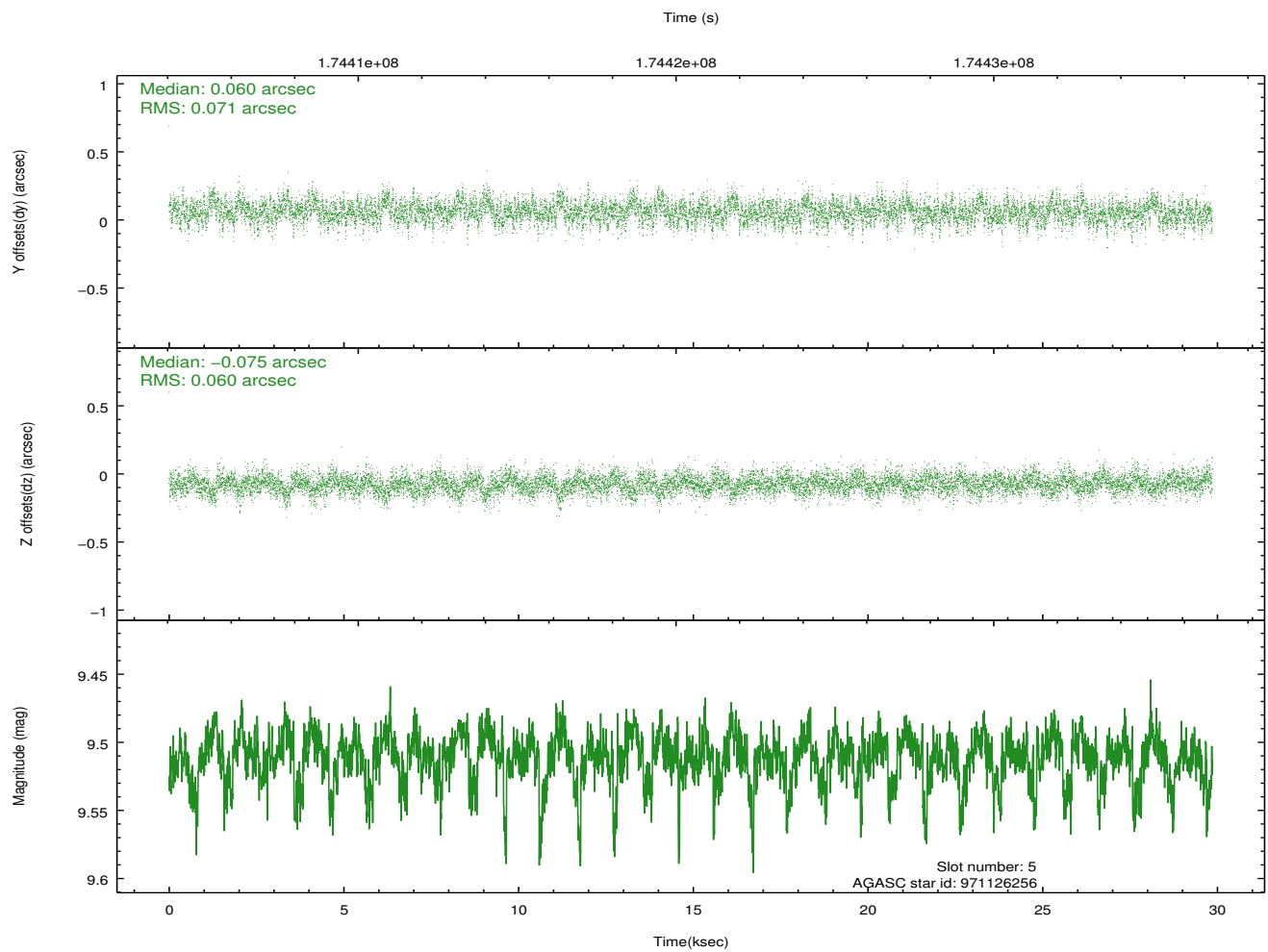
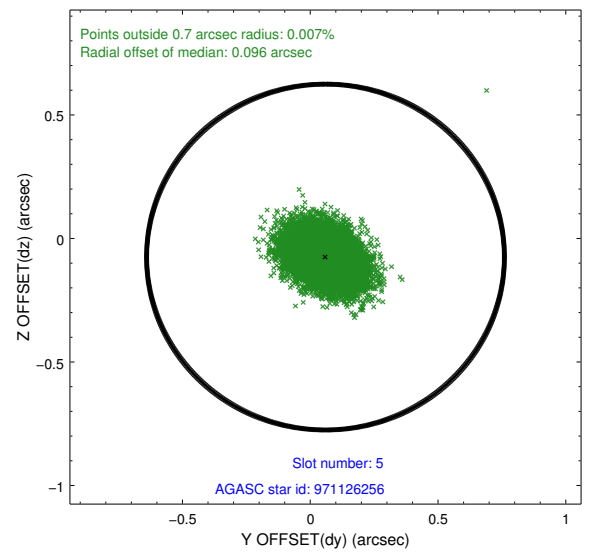
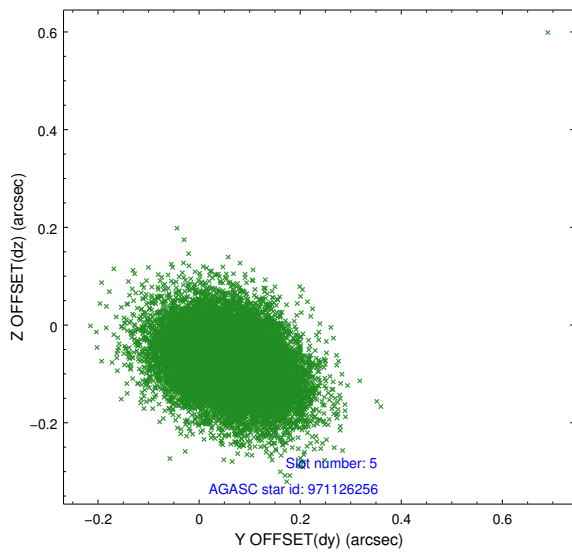
2.4.1 Slot 3



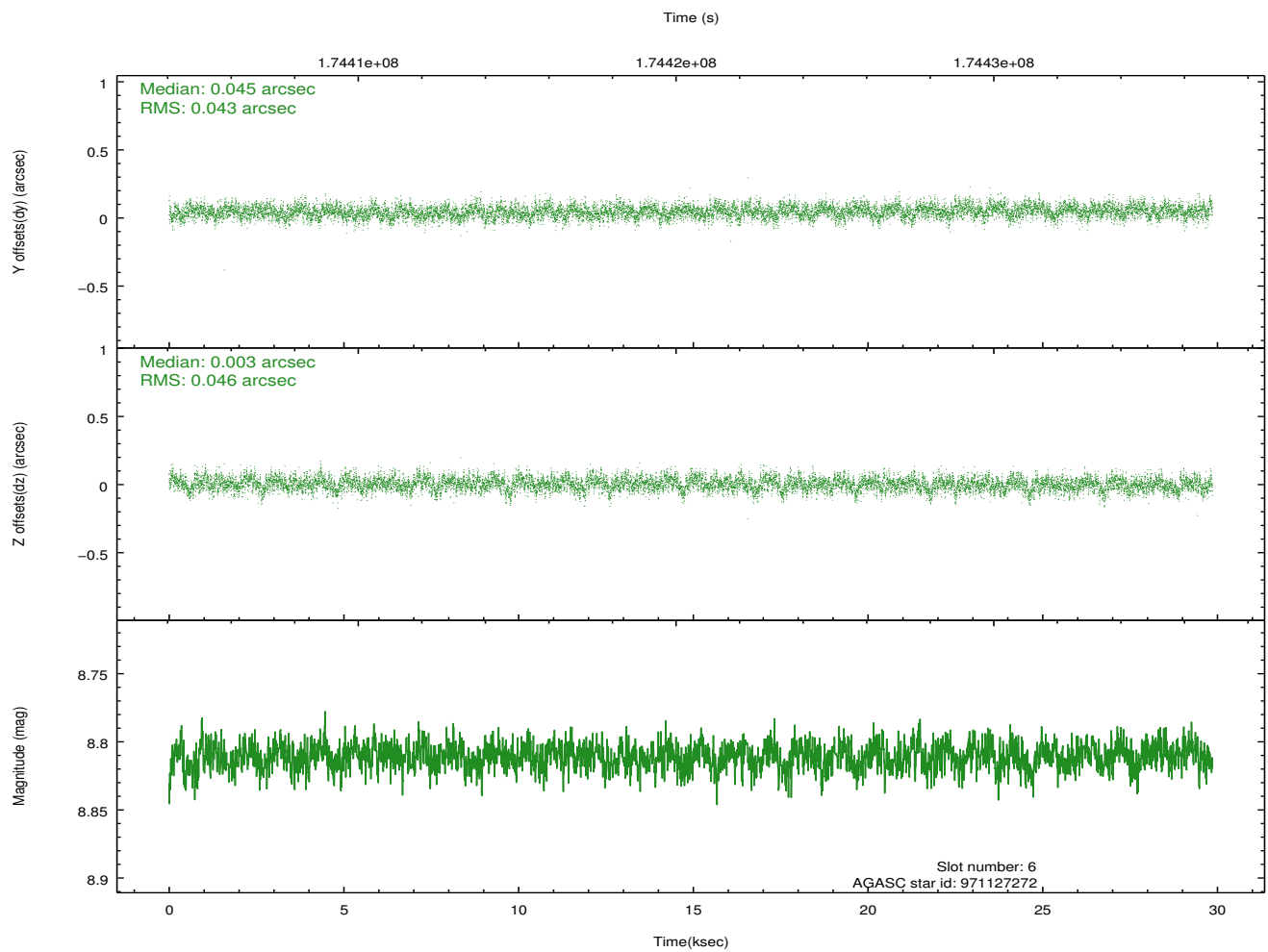
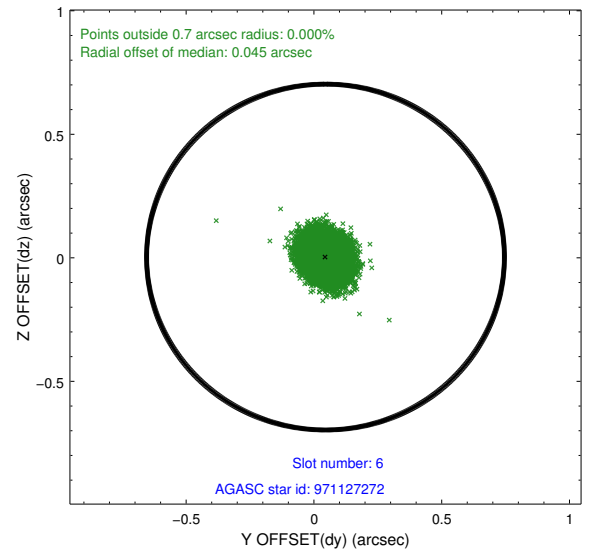
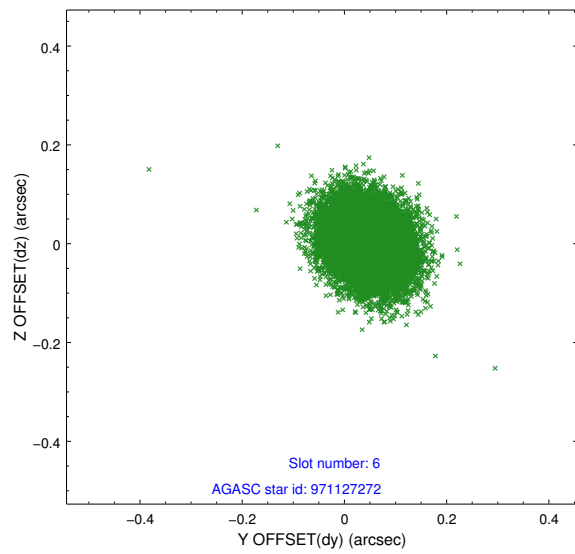
2.4.2 Slot 4



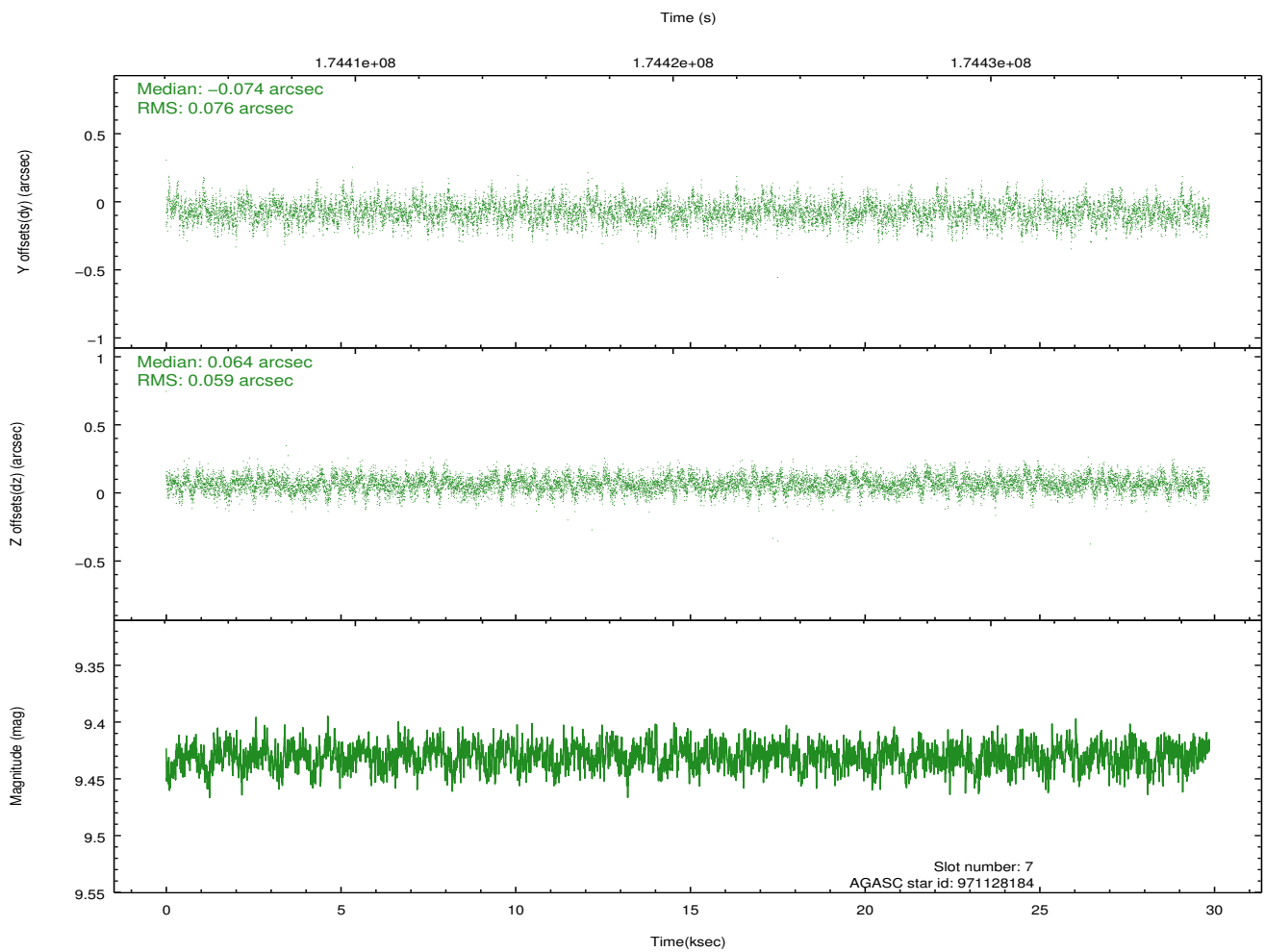
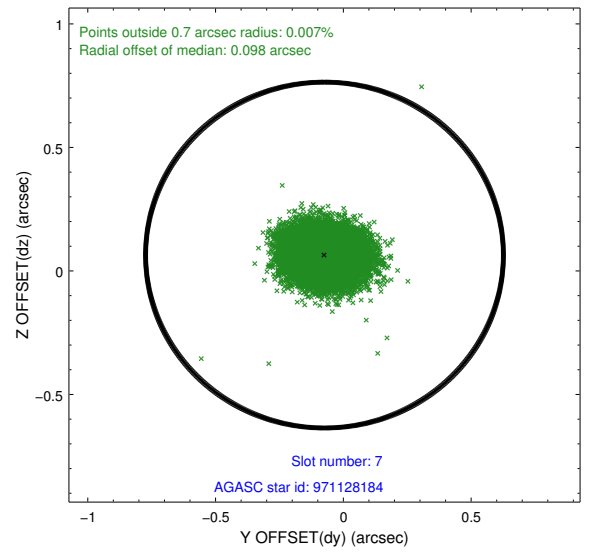
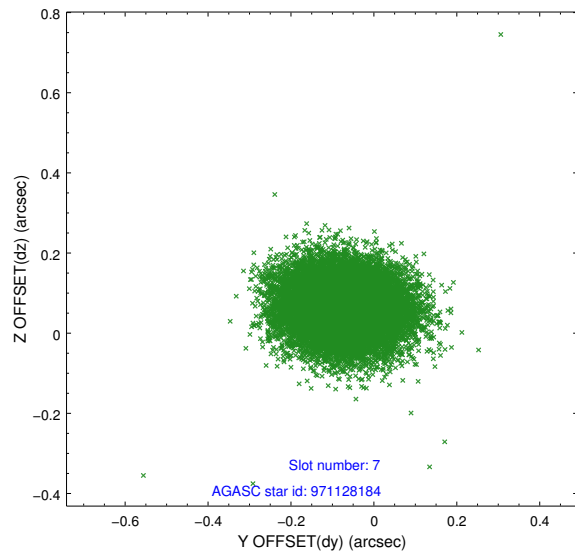
2.4.3 Slot 5



2.4.4 Slot 6

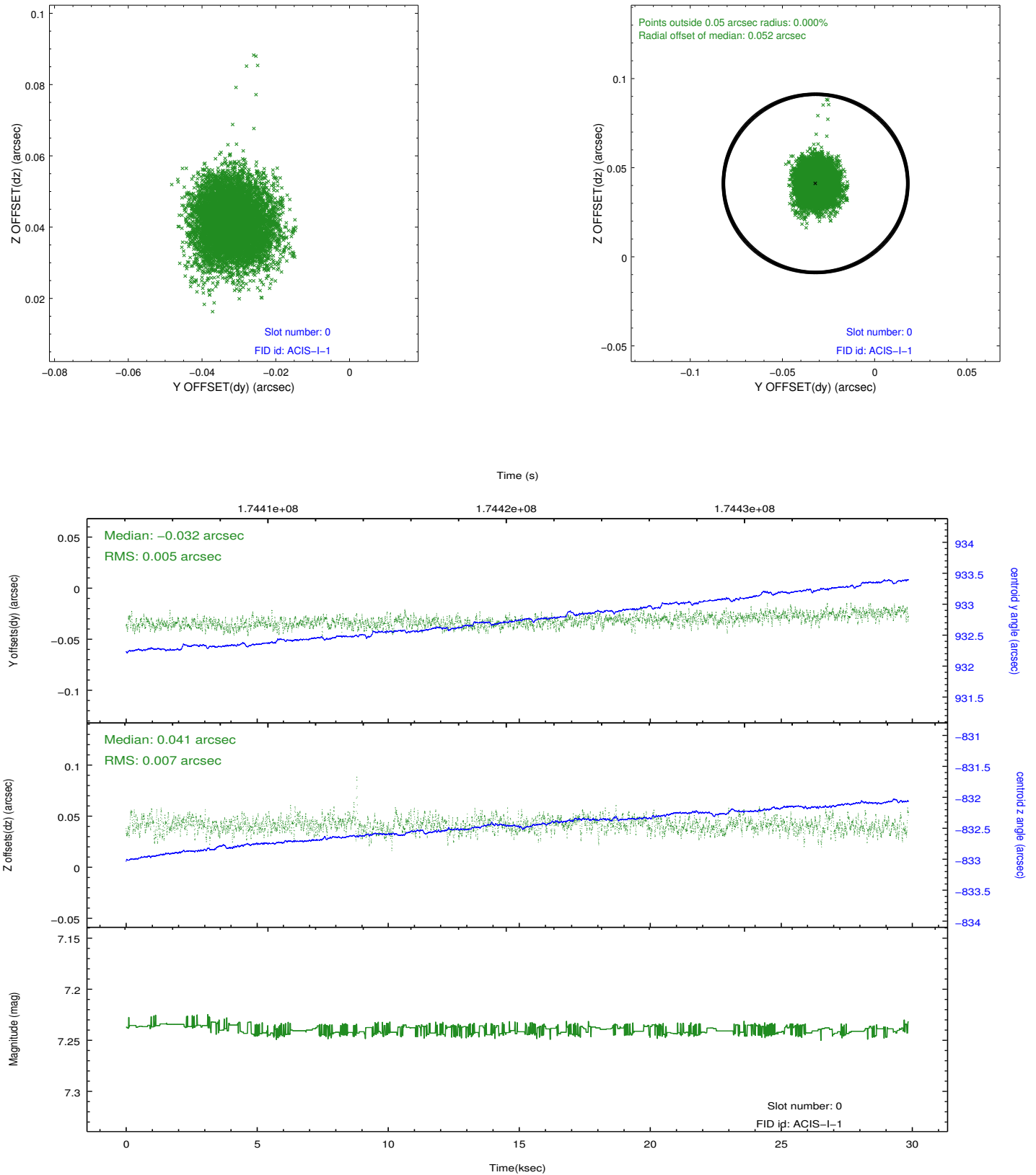


2.4.5 Slot 7

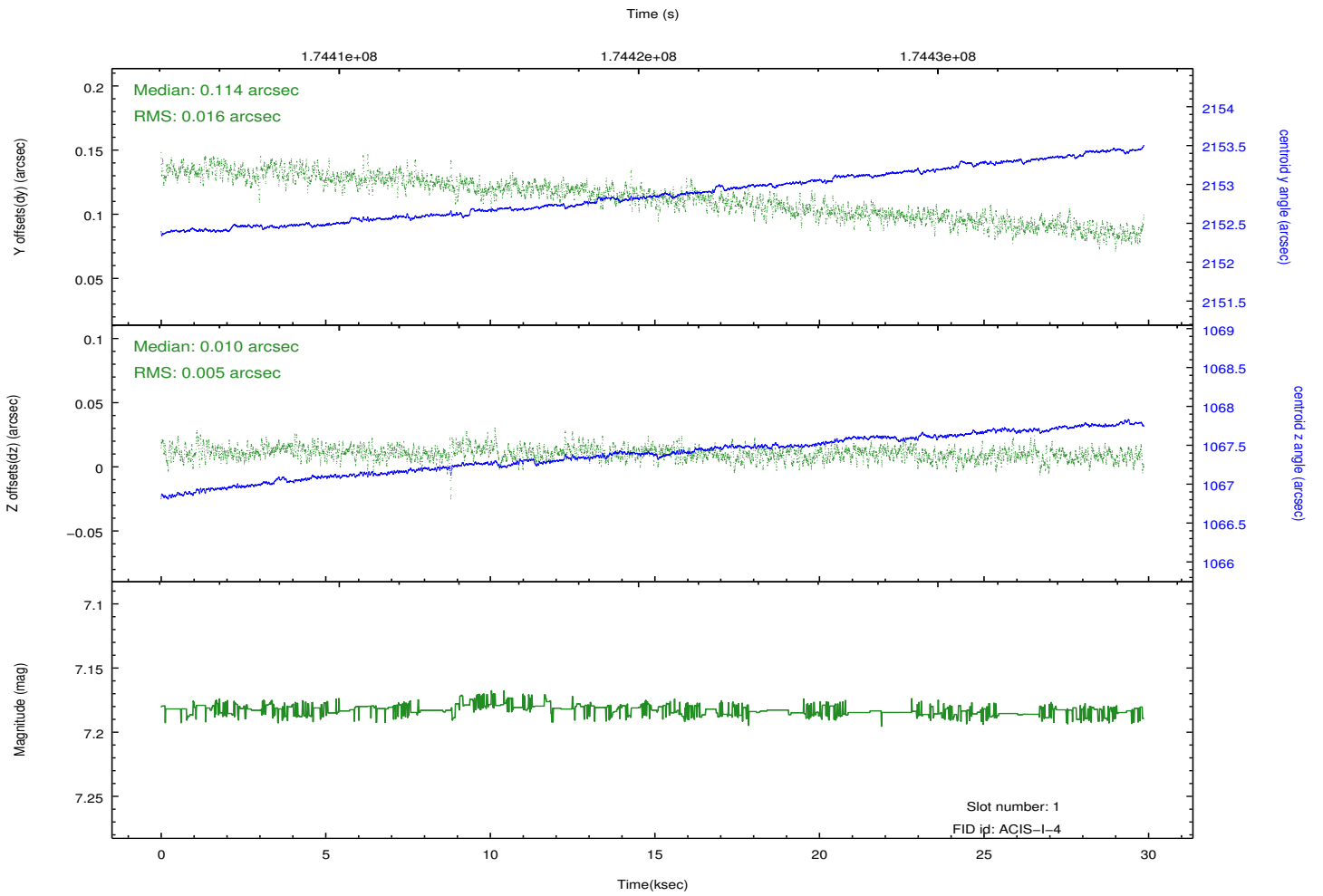
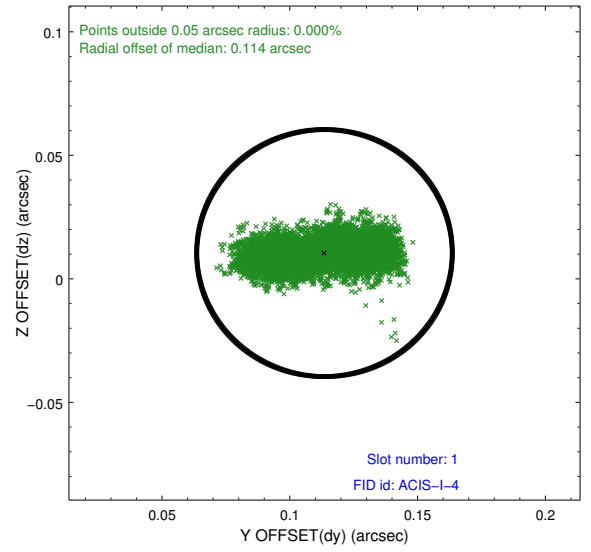
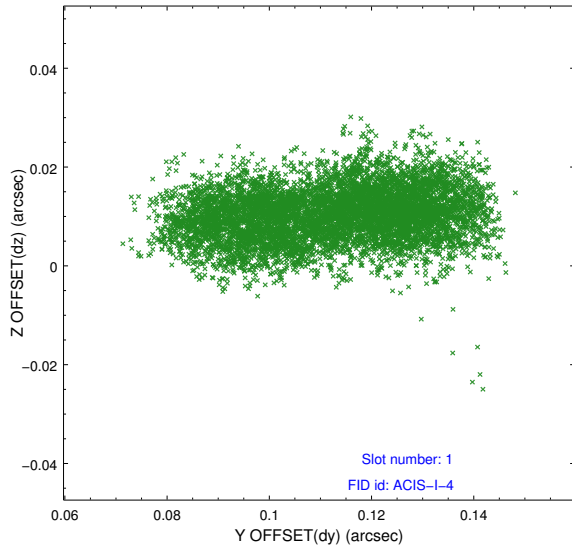


2.5 FID Slots

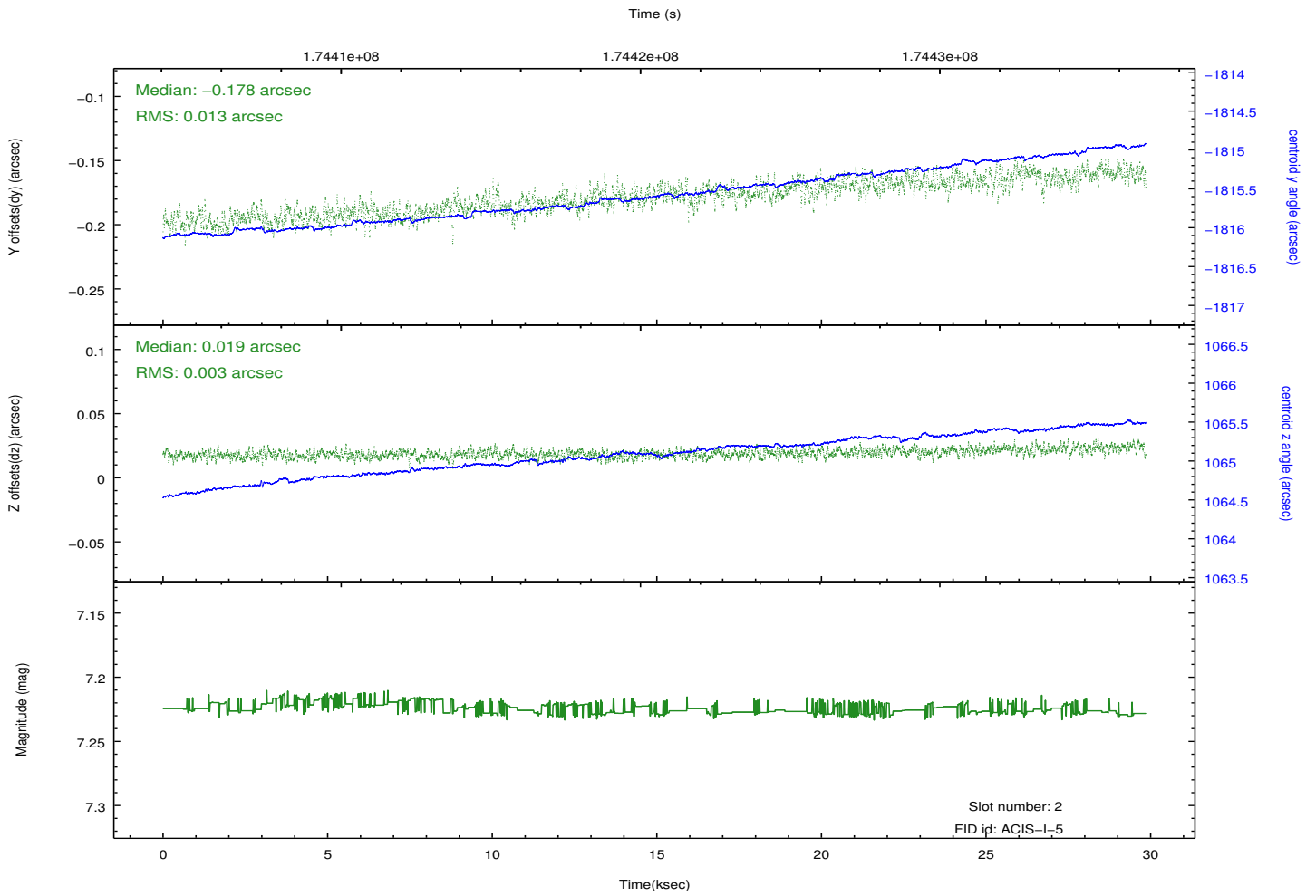
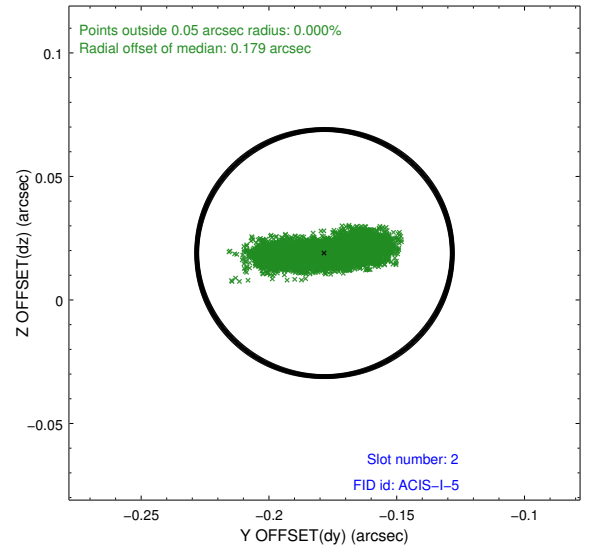
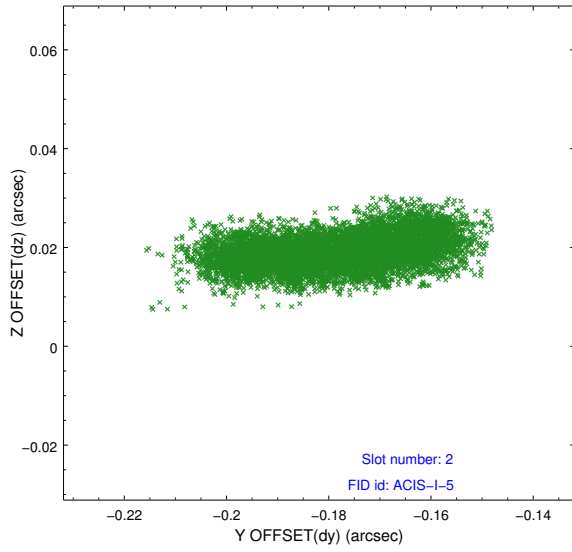
2.5.1 Slot 0



2.5.2 Slot 1



2.5.3 Slot 2



A Summary

A.1 Status

V&V Scientist	Joy Nichols
V&V Date (YYYY-MM-DD)	2012.11.06
V&V Edition	1
V&V Disposition and Status	OK
V&V Charge Time	29.855

A.2 Comments