

V&V Reference Report

L2 ASCDS Version : 8.4.5

Observation 3967 - L2 Version 3
Chandra X-Ray Center

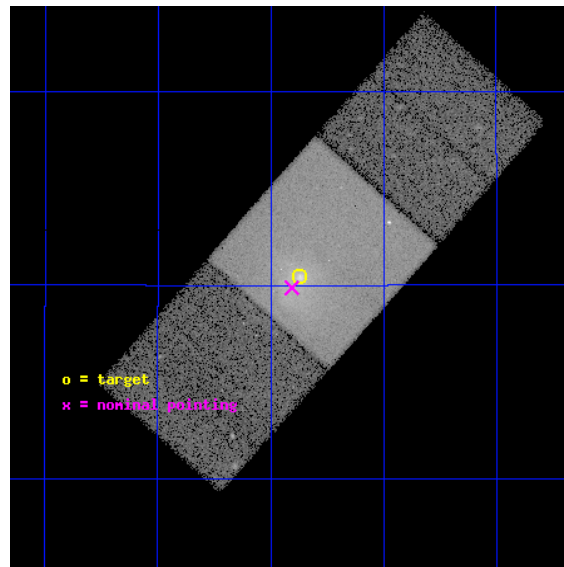
L2 Processing Date : Oct 19 2012

Contents

1	Front	2
2	OBI	3
2.1	OBI	3
2.1.1	Images	3
2.1.2	Bias	3
2.1.3	Parameters	4
2.1.4	Events	4
2.2	Compared Parameters	5
2.3	Aspect	6
2.4	Star Slots	9
2.4.1	Slot 3	9
2.4.2	Slot 4	10
2.4.3	Slot 5	11
2.4.4	Slot 6	12
2.4.5	Slot 7	13
2.5	FID Slots	14
2.5.1	Slot 0	14
2.5.2	Slot 1	15
2.5.3	Slot 2	16
A	Summary	17
A.1	Status	17
A.2	Comments	17

1 Front

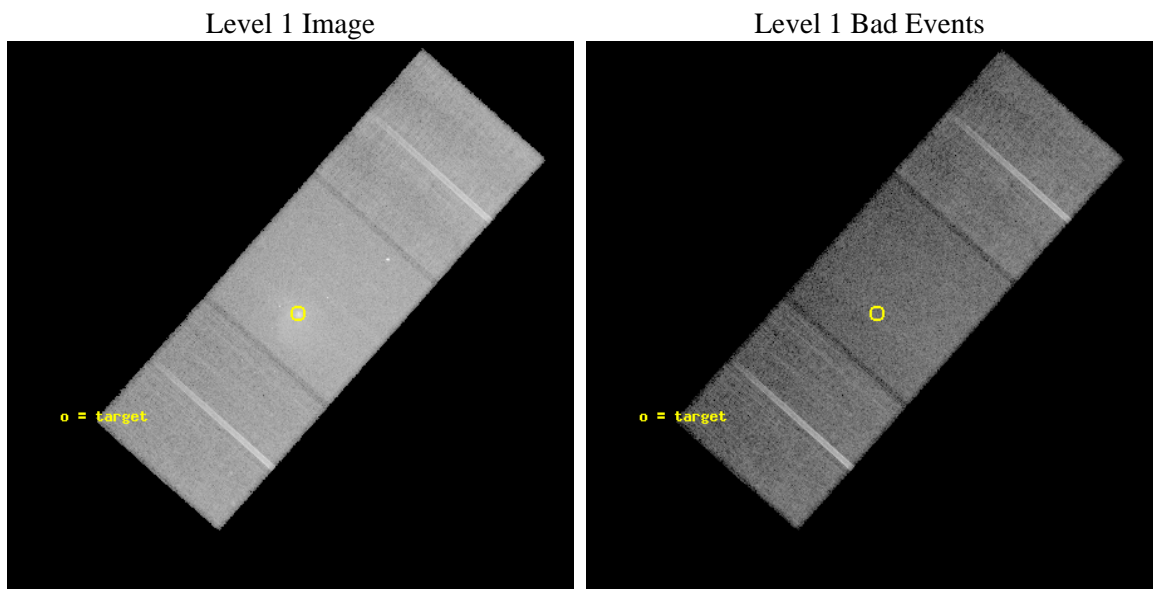
seq_num	700646	Sequence number
obs_id	3967	Observation id
title	PROBING INTO THE ENEGETICS IN LOBES OF RADIO GALAXIES.	Proposal ti
observer	Dr. Naoki Isobe	Principal investigator
object	3C 438	Source name
dtcycle	0	
cycle	P	events from which exps? Prim/Second/Both
ra_targ	328.967917	Observer's specified target RA [deg]
dec_targ	38.008222	Observer's specified target Dec [deg]
ra_nom	328.97670680068	Nominal RA [deg]
dec_nom	37.997868147931	Nominal Dec [deg]
roll_nom	311.62405366173	Nominal Roll [deg]
revision	3	Processing version of data
ontime	48095.864406824	Sum of GTIs [s]
livetime	47467.456530689	Livetime [s]
ontime6	48095.823366821	Sum of GTIs [s]
ontime7	48095.864406824	Sum of GTIs [s]
ontime8	48092.641336679	Sum of GTIs [s]
l2events	283326	Number of level 2 events



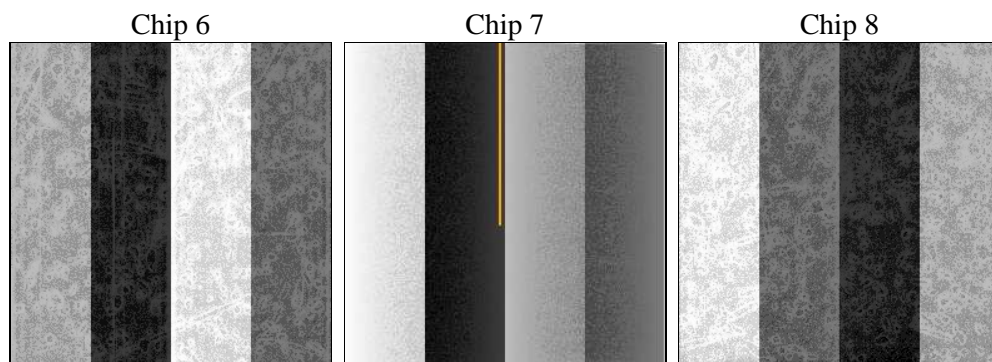
2 OBI

2.1 OBI

2.1.1 Images



2.1.2 Bias



2.1.3 Parameters

obi_num	1	Obi number	sched_exp_time	47739.944000	[s] Scheduled observation exposure time
ascdsver	8.4.5	Processing system revision	ontime	48095.864406824	Sum of GTIs [s]
caldsver	4.5.2	 	ontime6	48095.823366821	Sum of GTIs [s]
date	2012-10-19T14:53:18	Date and time of file creation	ontime7	48095.864406824	Sum of GTIs [s]
revision	3	Processing version of data	ontime8	48092.641336679	Sum of GTIs [s]
			l1events	1109641	Number of level 1 events

2.1.4 Events

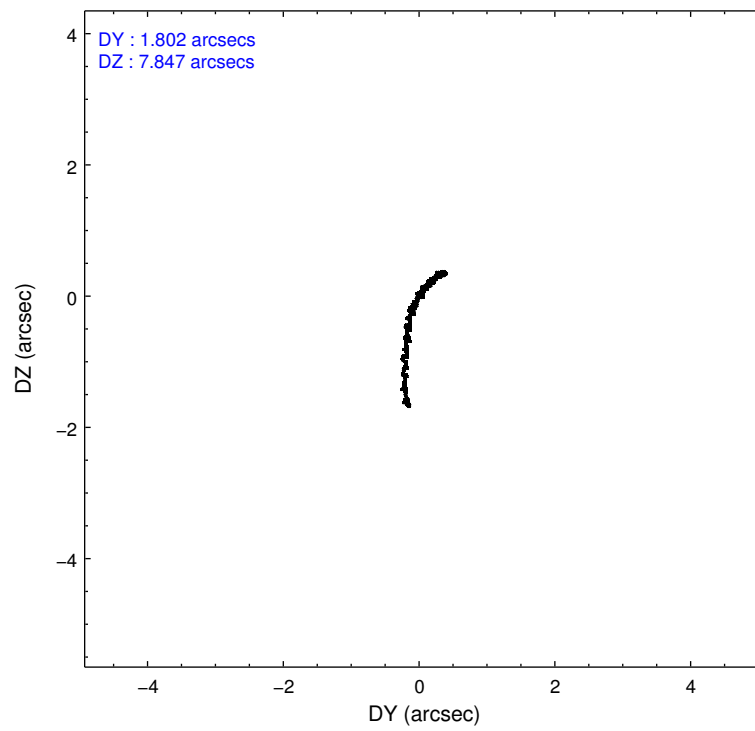
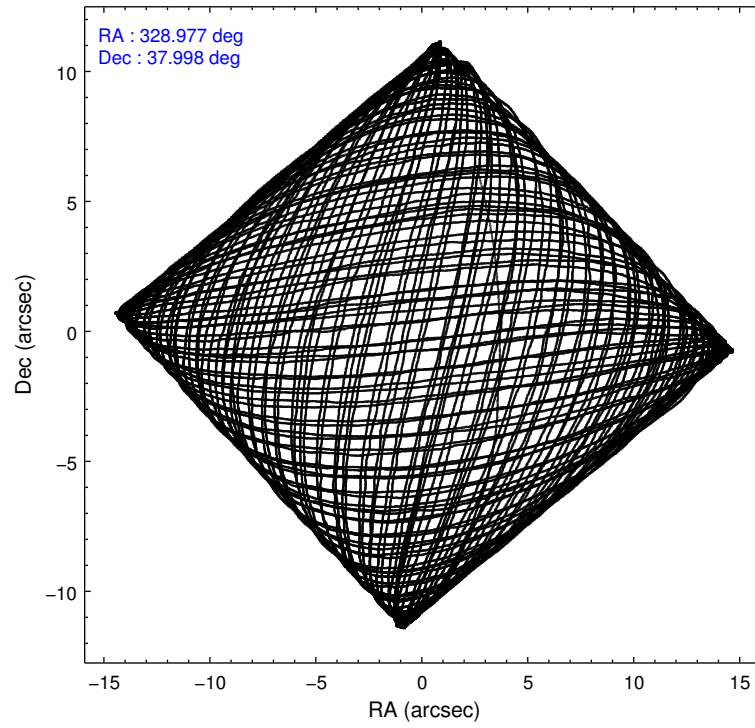
	ccd 6	ccd 7	ccd 8
level 1 events	298623	439420	371598
rejected events	258809	223305	293640
rejected %	86%	50%	79%

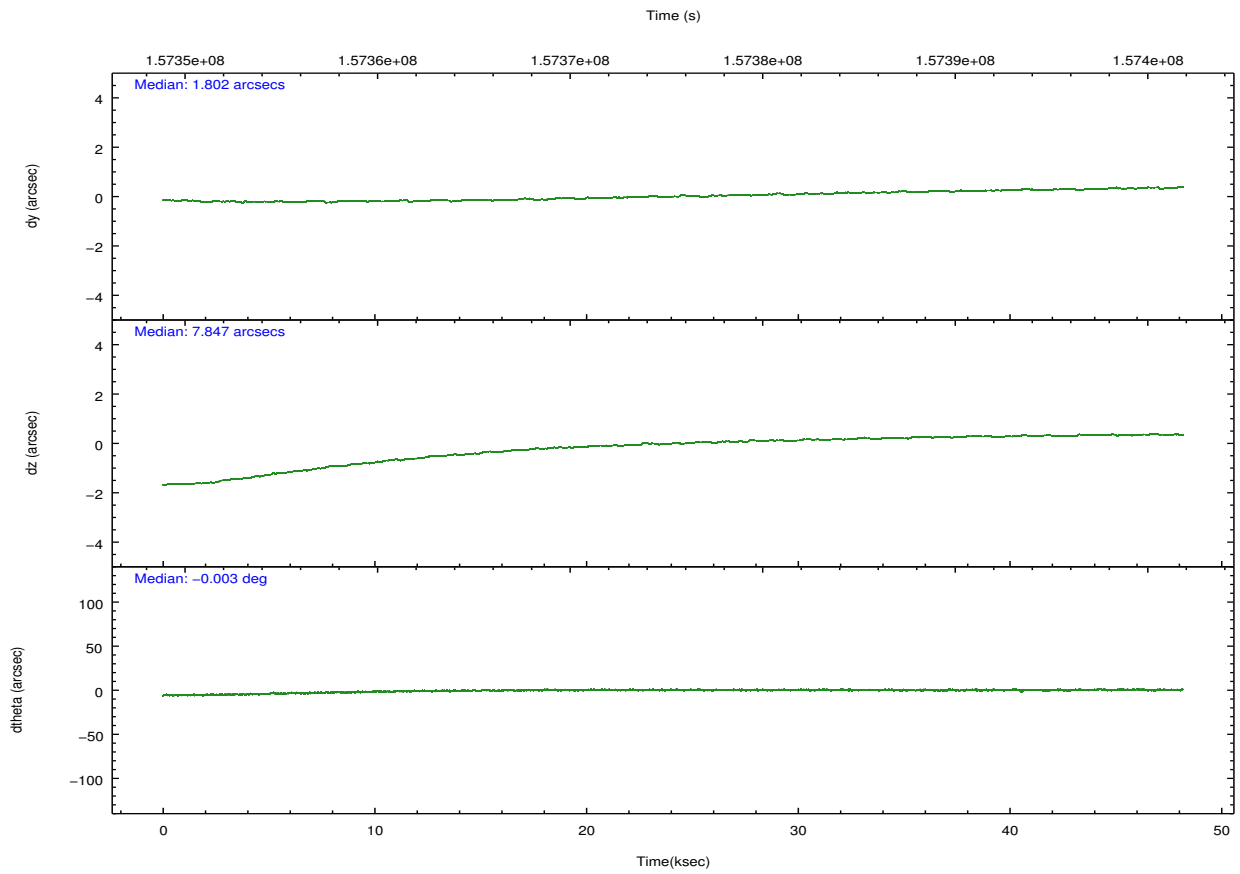
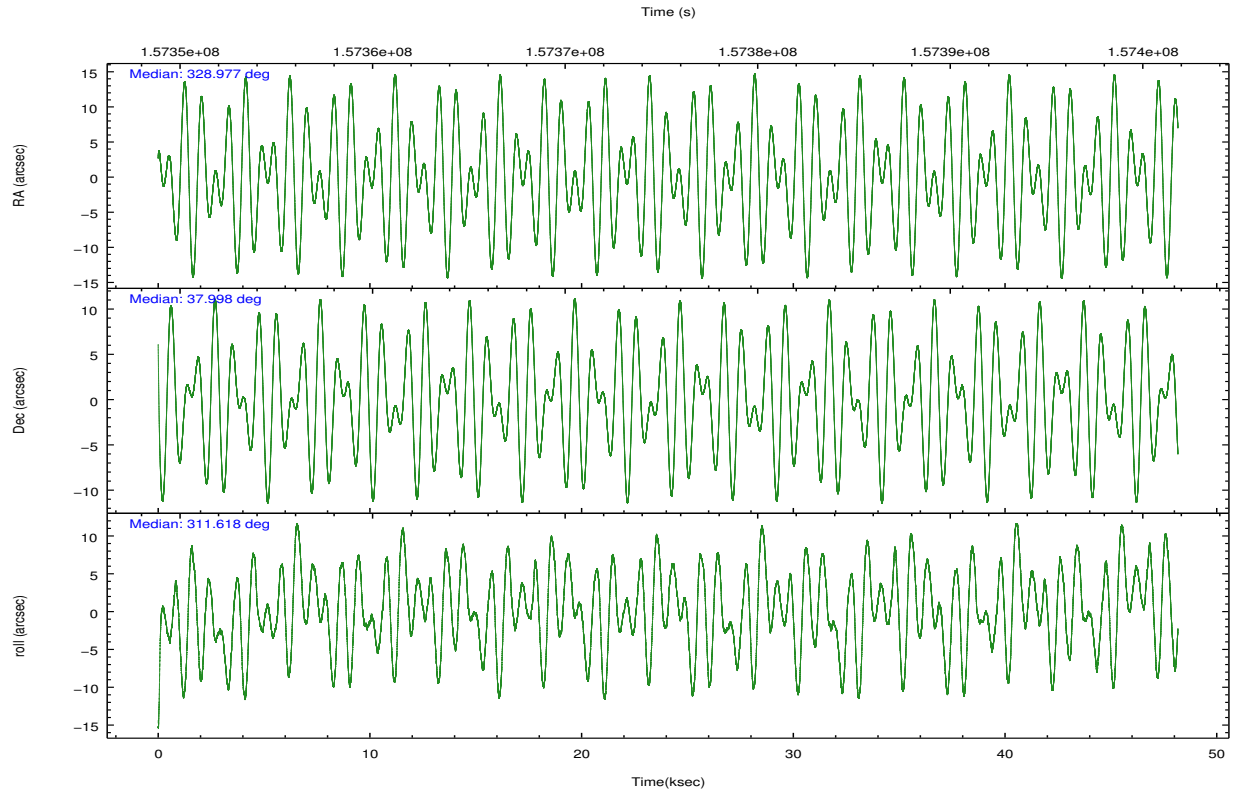
	ccd 6	ccd 7	ccd 8
grade 0 events	18238	26137	26056
	6%	5%	7%
grade 1 events	161	346	206
	0%	0%	0%
grade 2 events	7730	44119	16910
	2%	10%	4%
grade 3 events	3521	19912	7948
	1%	4%	2%
grade 4 events	3432	20011	7304
	1%	4%	1%
grade 5 events	13030	36820	17222
	4%	8%	4%
grade 6 events	6908	105977	19752
	2%	24%	5%
grade 7 events	245603	186098	276200
	82%	42%	74%

2.2 Compared Parameters

Parameter	Planned	Actual	Parameter	Planned	Actual
Instrument	ACIS	ACIS	Obspar format version number	7	7
Detector	ACIS-678	ACIS-678	Obspar file type	PREDICTED	ACTUAL
Grating	NONE	NONE	Obspar update status	NONE	UPDATED
Data mode	VFAINT	VFAINT	Number of optional ACIS chips dropped	0	0
Observation mode	POINTING	POINTING	On-chip summing requested	N	N
[deg] Pointing RA	328.943769	328.9767068006827	Subarray requested	NONE	NONE
[deg] Pointing Dec	38.006087	37.99786814793122	Alternating exposures requested	N	N
[deg] Pointing Roll	311.487700	311.6240536617308	[s] Primary exposure time	0.000000	3.1
[mm] SIM focus pos	-0.684267	-0.6828225247311905			
[mm] SIM defocus	0	0.001444936568705701			
[mm] SIM translation stage pos	-190.132523	-190.1400660498719			
[mm] SIM translation stage offset	0	0.00754346686406393			
[s] Observation start time (MET)	157351691.184000	157350606.82491			
Observation start date	2002-12-27T04:47:07	2002-12-27T04:30:06			
[s] Observation end time (MET)	157399431.184000	157399745.83946			
Observation end date	2002-12-27T18:02:47	2002-12-27T18:09:05			
Read mode	TIMED	TIMED			

2.3 Aspect



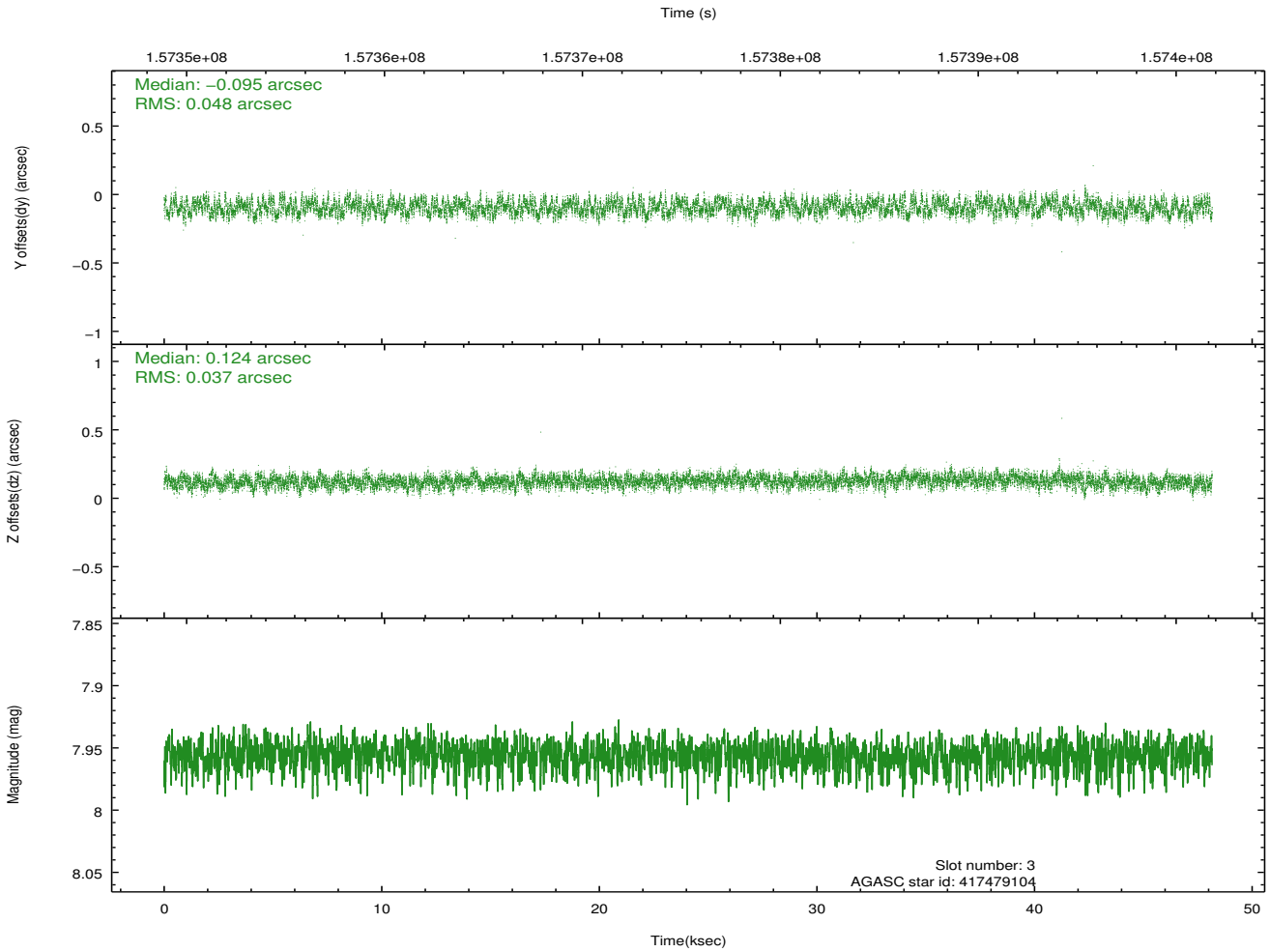
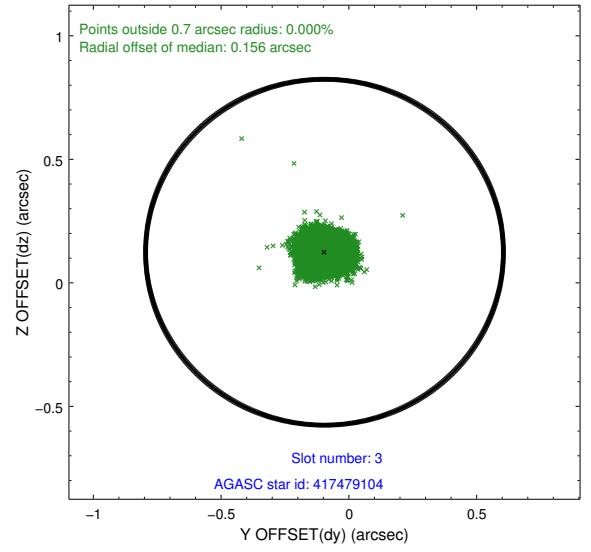
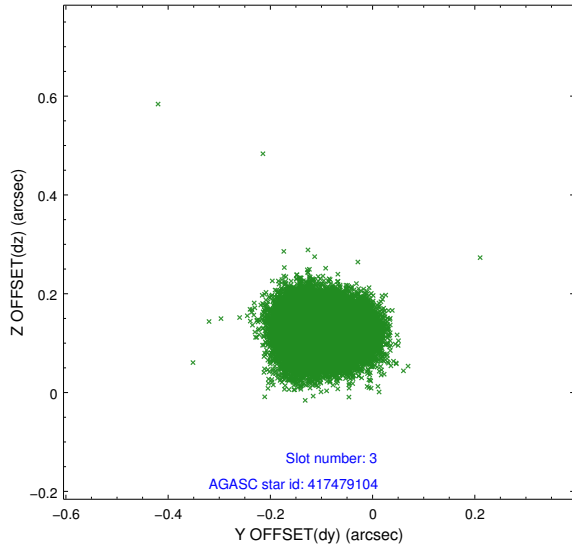


Slot Statistics

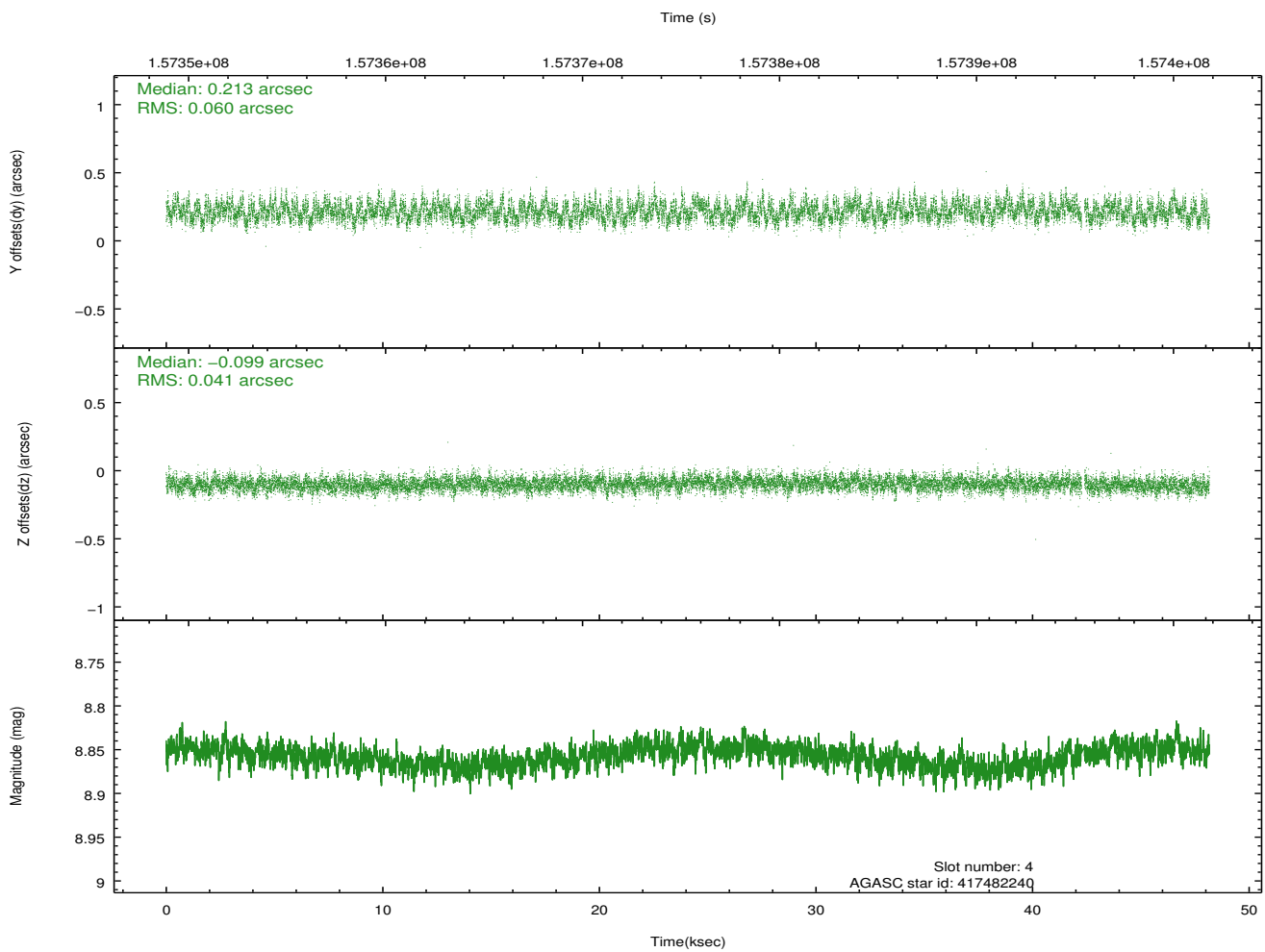
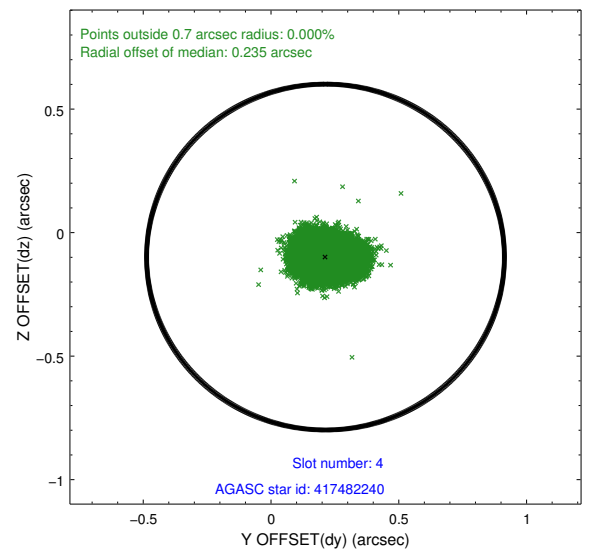
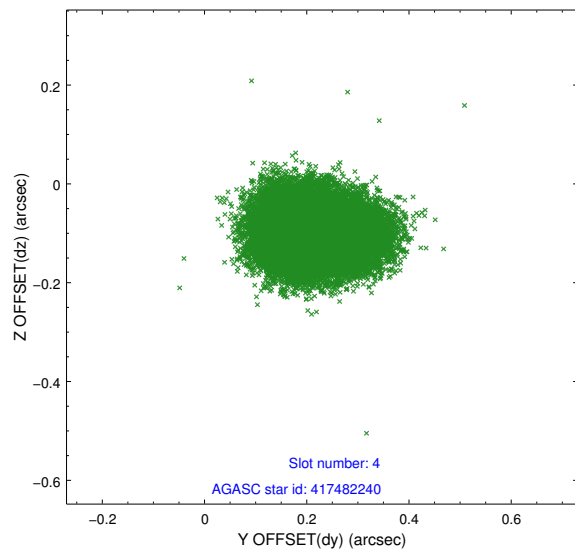
slot	status	id	mag	n_pts	med_dy	med_dz	dr1	dr2	ra	dec	mean_y	mean_z
0	FID	ACIS-S-2	7.11	11748	-0.032	-0.016	0.014	0.029	0.000000	0.000000	-754.48	-1728.80
1	FID	ACIS-S-4	7.20	11747	0.003	0.021	0.009	0.031	0.000000	0.000000	2158.85	179.72
2	FID	ACIS-S-5	7.24	11746	0.001	0.006	0.013	0.025	0.000000	0.000000	-1807.29	173.38
3	GUIDE	417479104	7.96	23493	-0.095	0.124	0.066	0.100	329.876629	37.975291	1826.88	1919.07
4	GUIDE	417482240	8.86	23422	0.213	-0.099	0.078	0.125	329.724568	37.923263	1685.60	1470.01
5	GUIDE	357837552	9.71	23400	0.113	-0.153	0.141	0.223	328.483895	37.390504	786.94	-2451.10
6	GUIDE	417483888	8.70	23483	-0.073	0.019	0.062	0.100	328.245105	38.343423	-2221.85	-668.50
7	GUIDE	417477256	9.35	23485	-0.156	0.114	0.130	0.205	328.891450	38.816575	-2283.14	1823.15

2.4 Star Slots

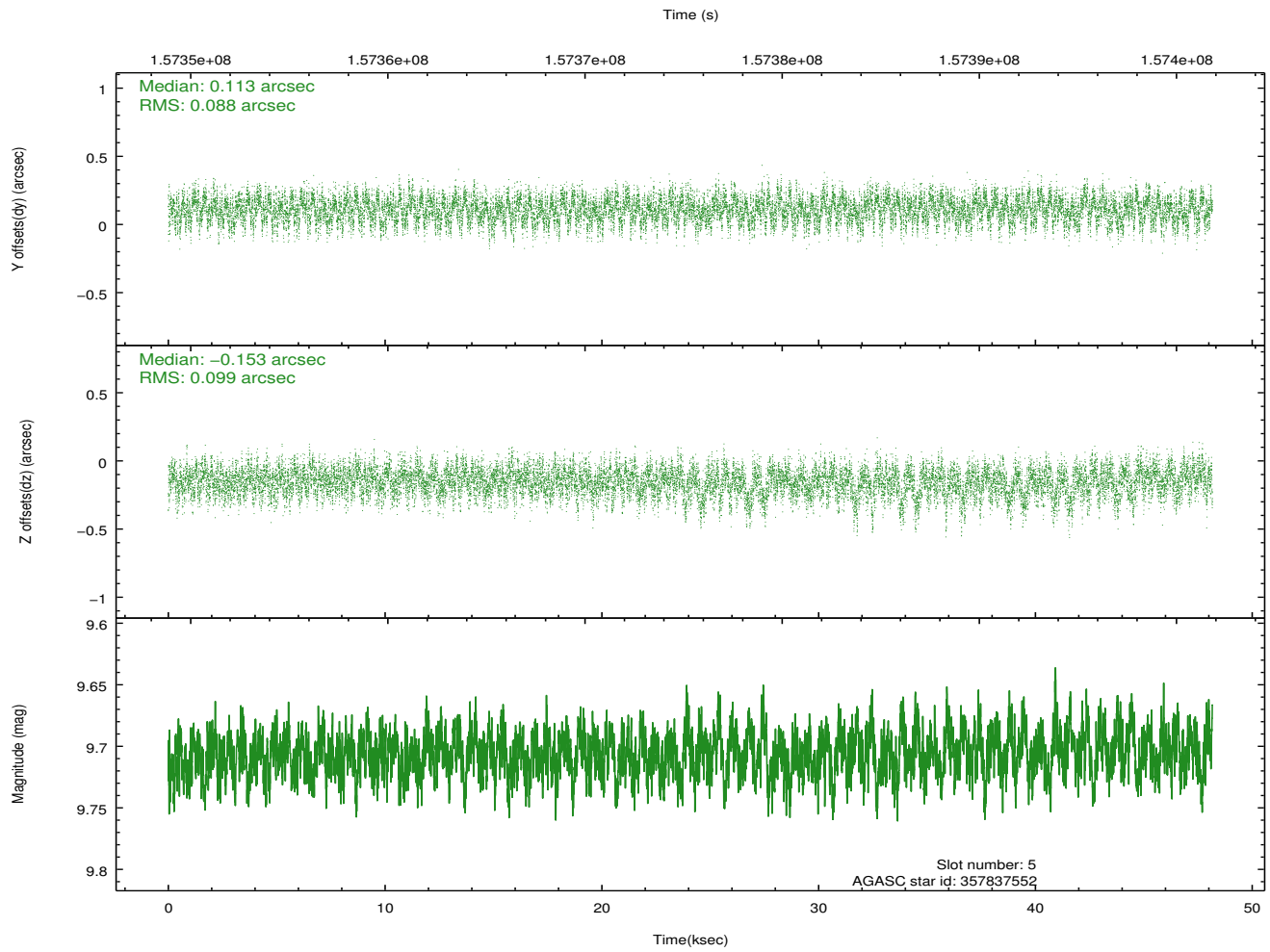
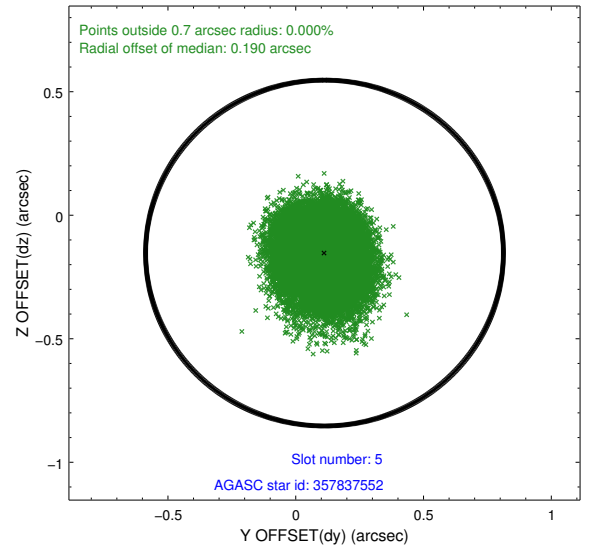
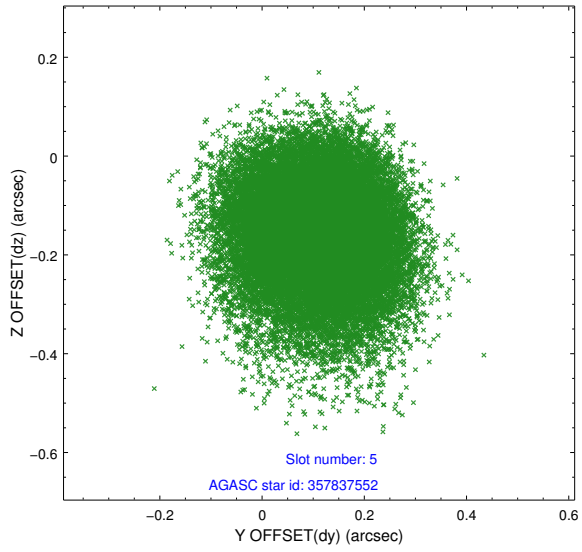
2.4.1 Slot 3



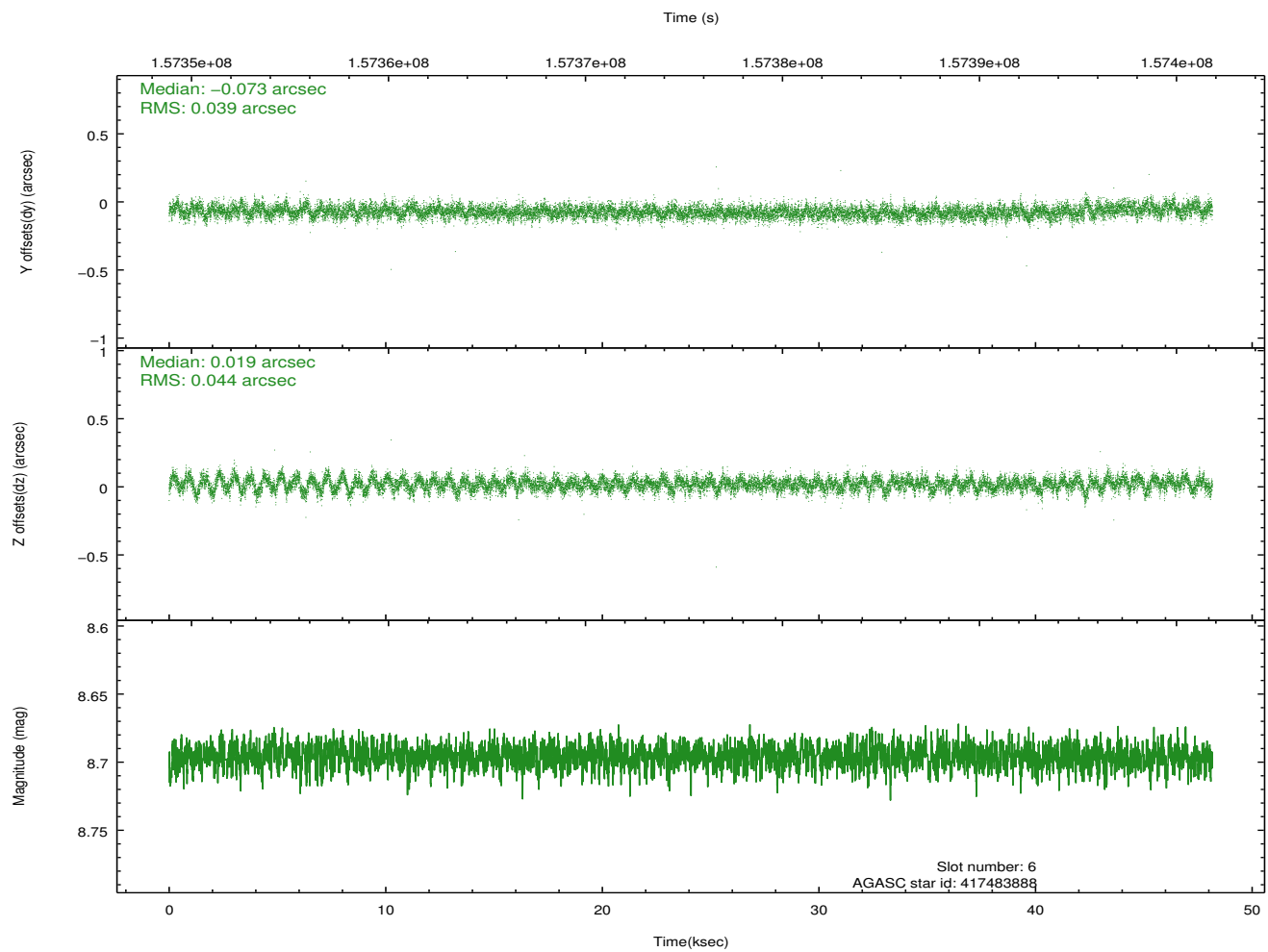
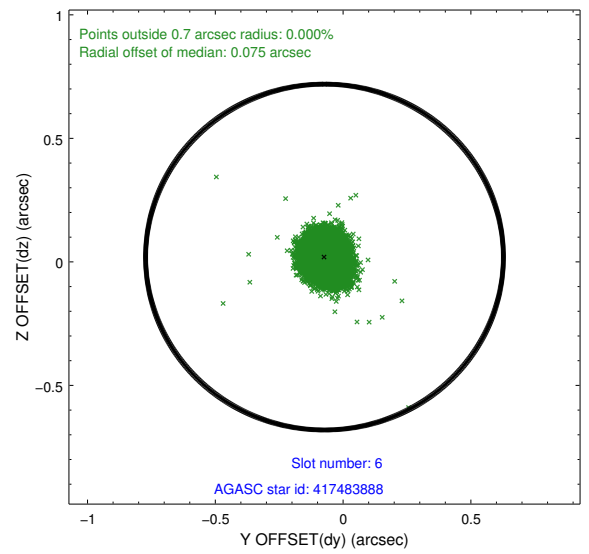
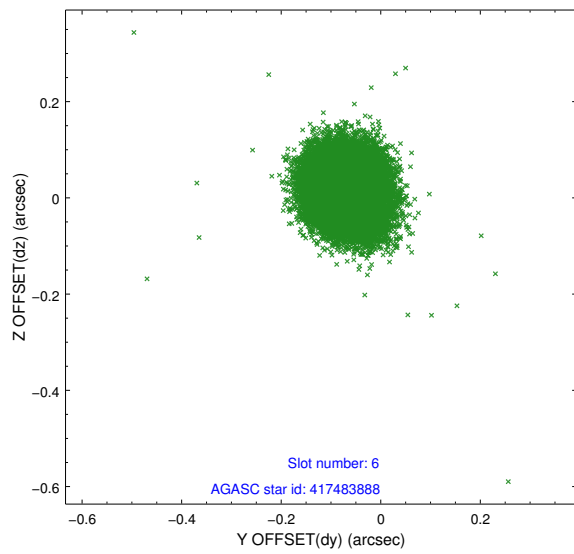
2.4.2 Slot 4



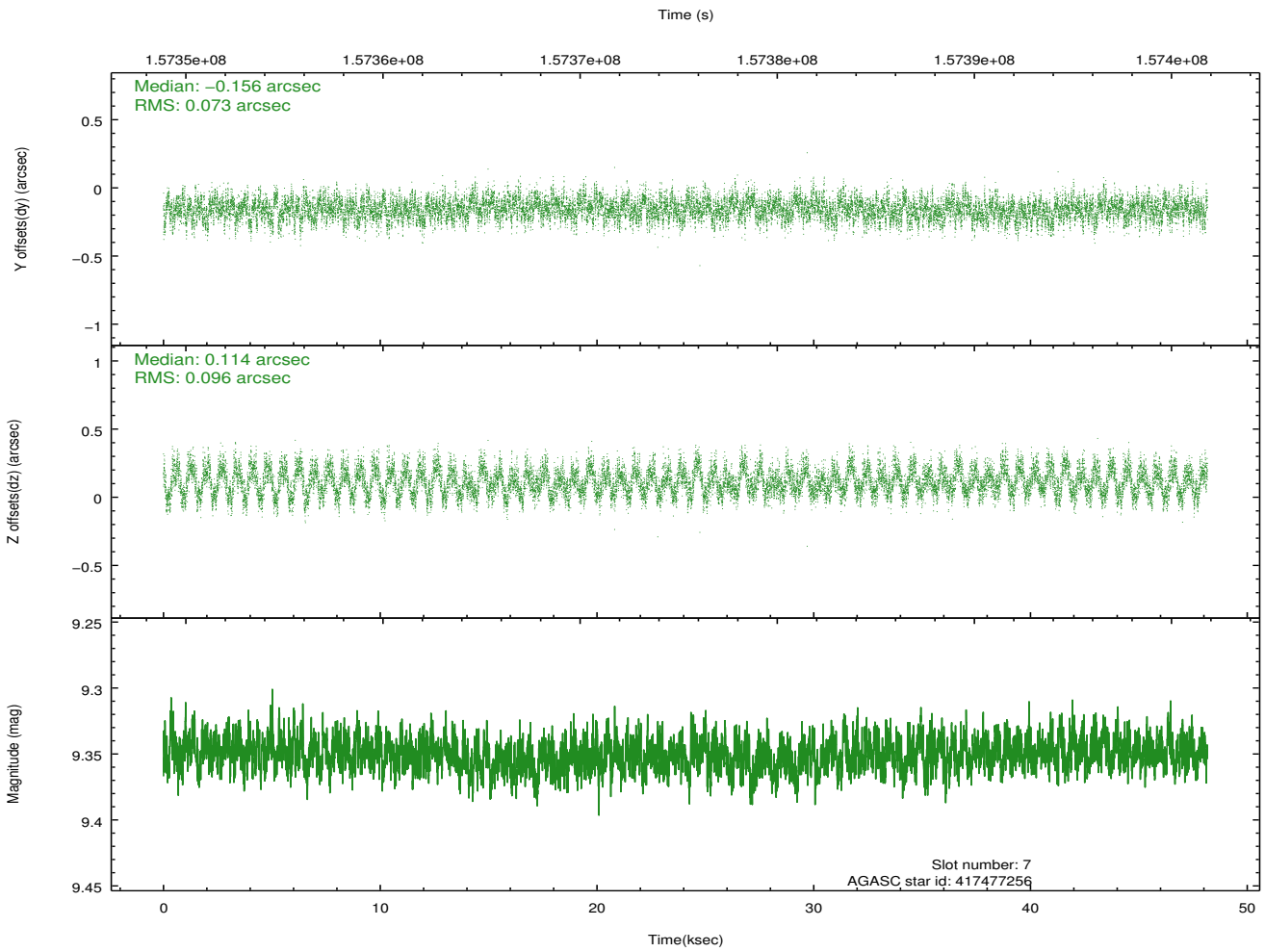
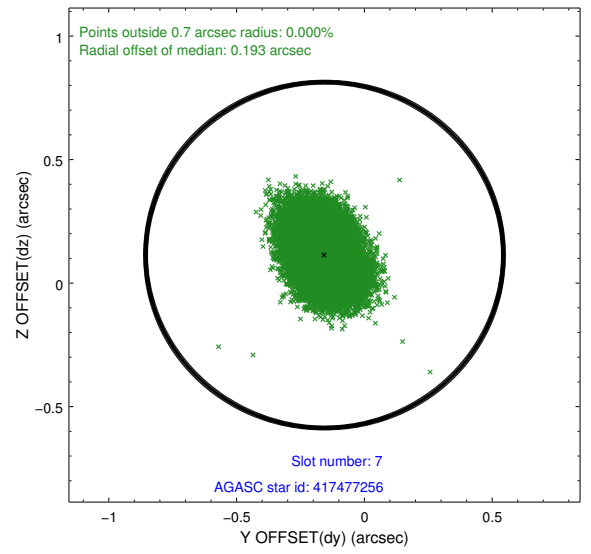
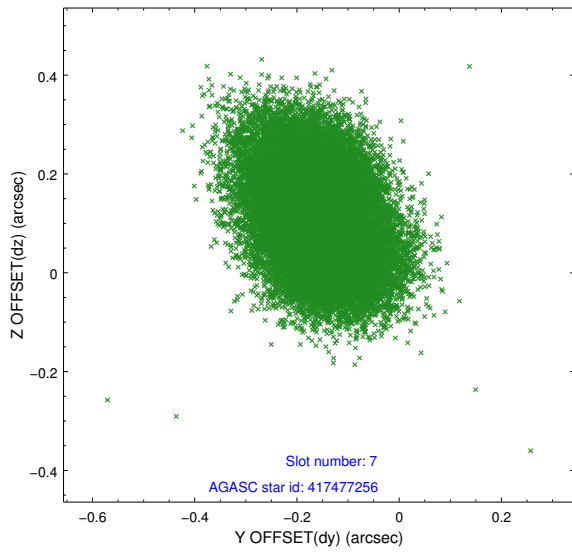
2.4.3 Slot 5



2.4.4 Slot 6

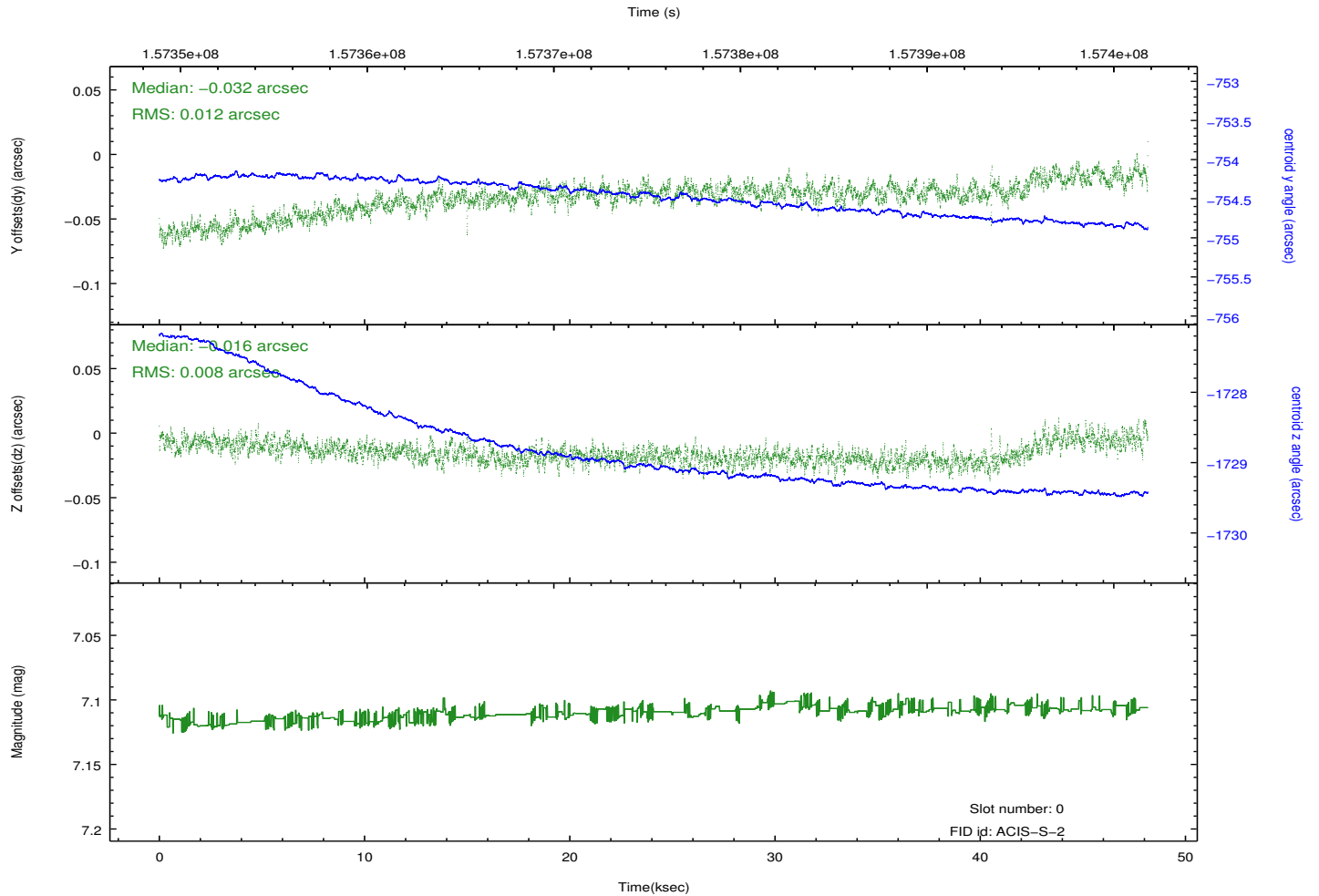
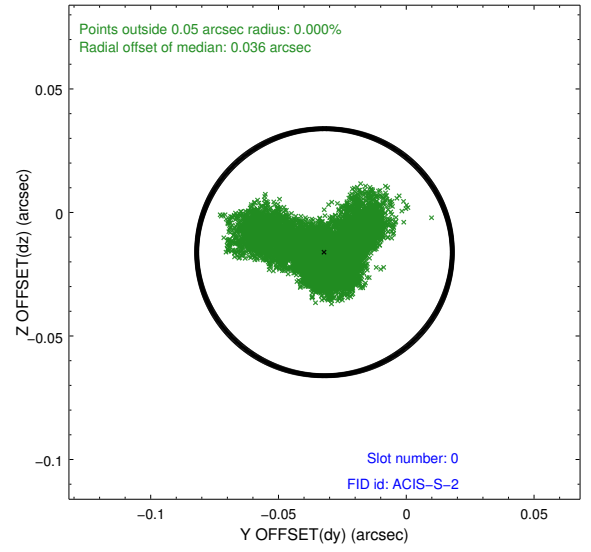
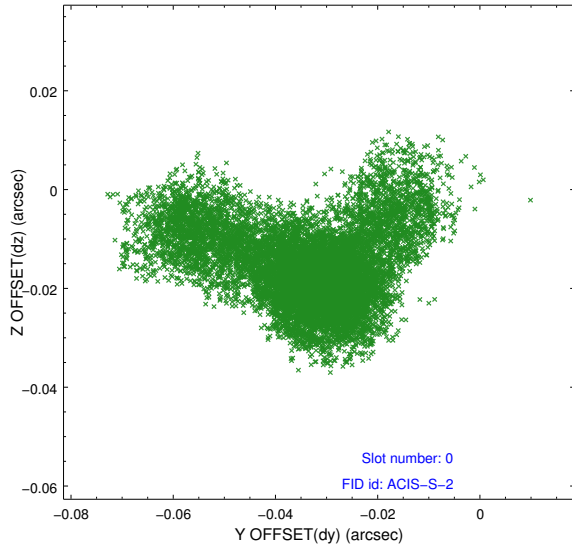


2.4.5 Slot 7

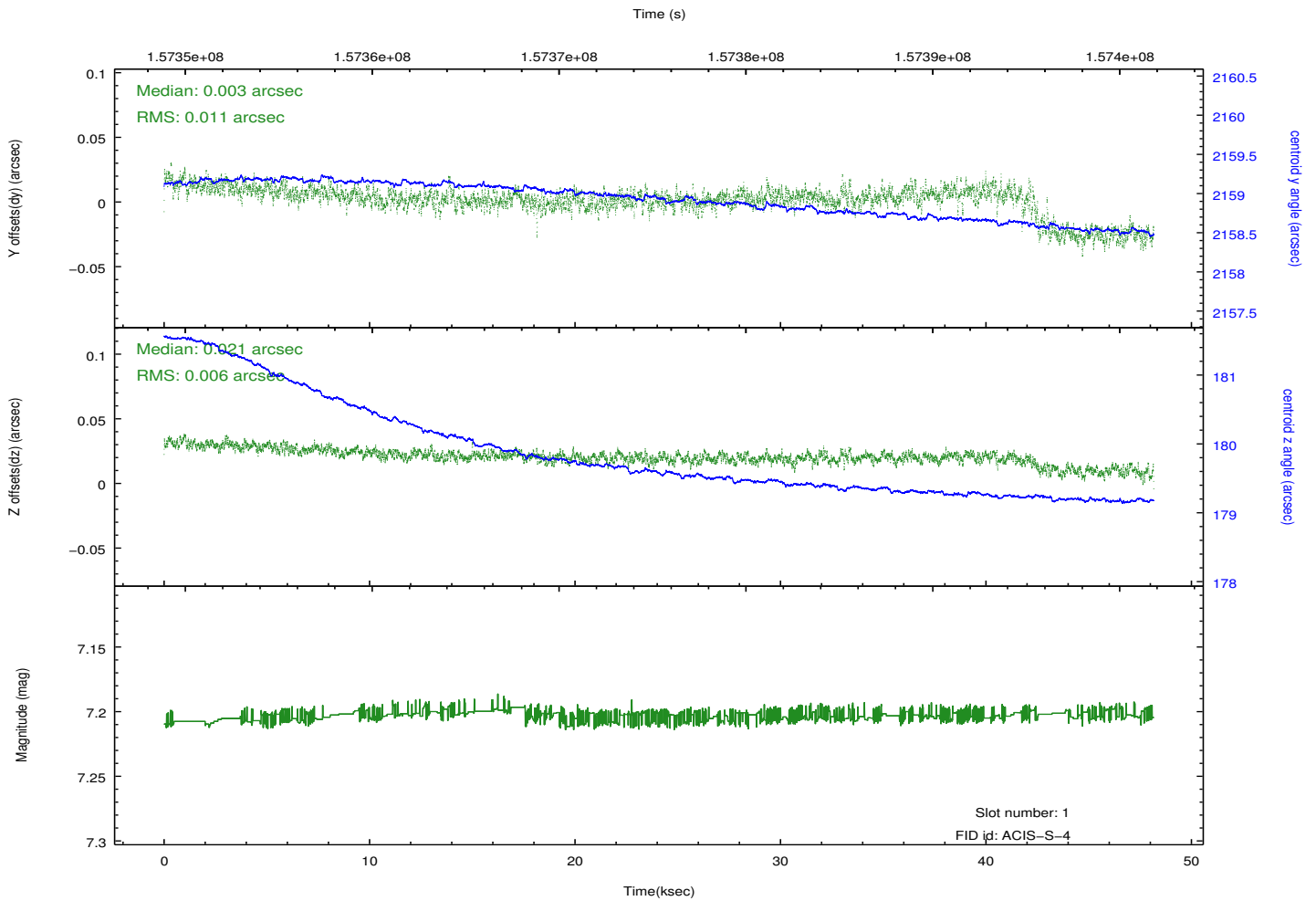
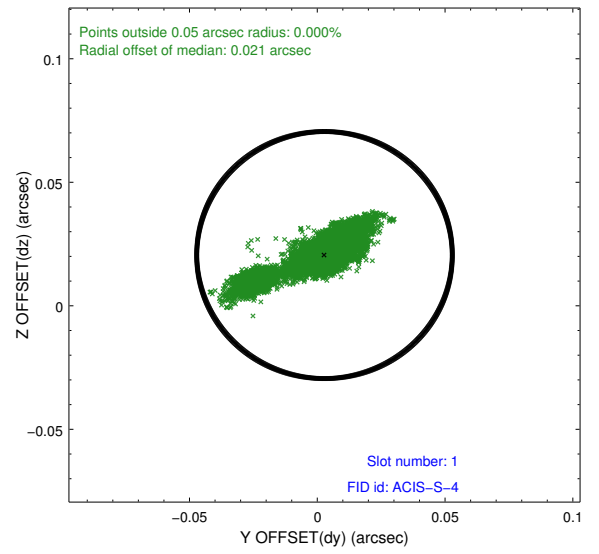
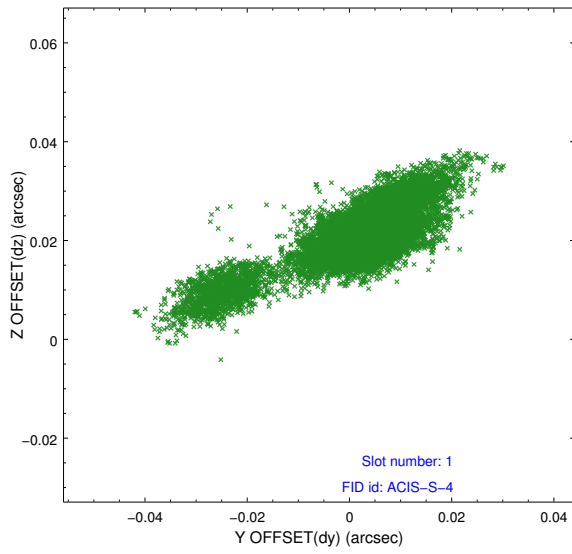


2.5 FID Slots

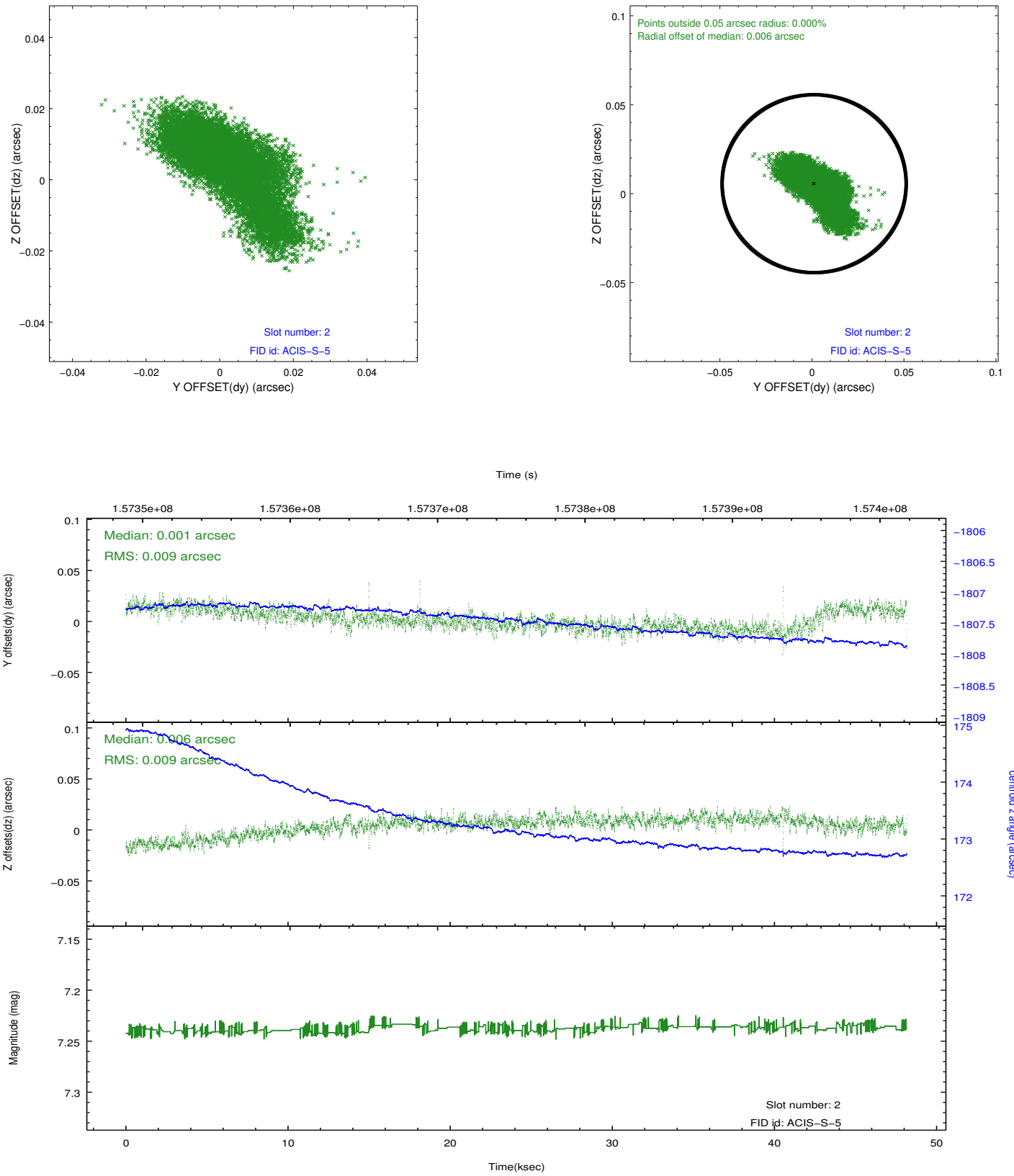
2.5.1 Slot 0



2.5.2 Slot 1



2.5.3 Slot 2



A Summary

A.1 Status

V&V Scientist	Jen Lauer
V&V Date (YYYY-MM-DD)	2012.10.31
V&V Edition	1
V&V Disposition and Status	OK
V&V Charge Time	47.898

A.2 Comments

Charge time for this observation remains at previous value of 47.898 ks, although with the current processing the charge time would have been 48.096 ksec.