

V&V Reference Report

L2 ASCDS Version : 8.4.5

Observation 3987 - L2 Version 3
Chandra X-Ray Center

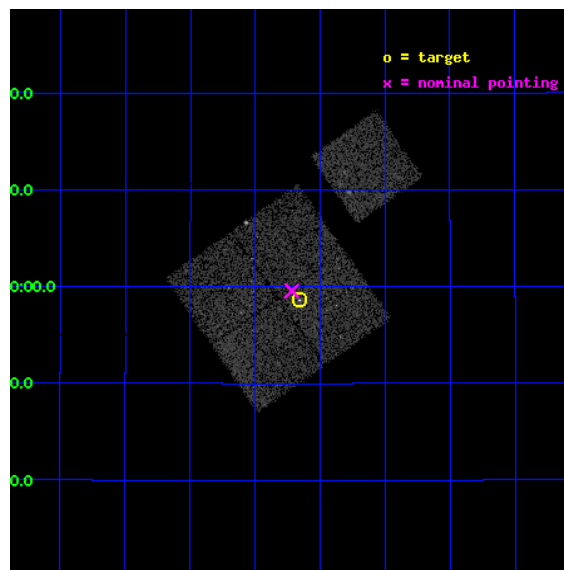
L2 Processing Date : Nov 8 2012

Contents

1	Front	2
2	OBI	3
2.1	OBI	3
2.1.1	Images	3
2.1.2	Bias	3
2.1.3	Parameters	4
2.1.4	Events	4
2.2	Compared Parameters	5
2.3	Aspect	6
2.4	Star Slots	9
2.4.1	Slot 3	9
2.4.2	Slot 4	10
2.4.3	Slot 5	11
2.4.4	Slot 6	12
2.4.5	Slot 7	13
2.5	FID Slots	14
2.5.1	Slot 0	14
2.5.2	Slot 1	15
2.5.3	Slot 2	16
A	Summary	17
A.1	Status	17
A.2	Comments	17

1 Front

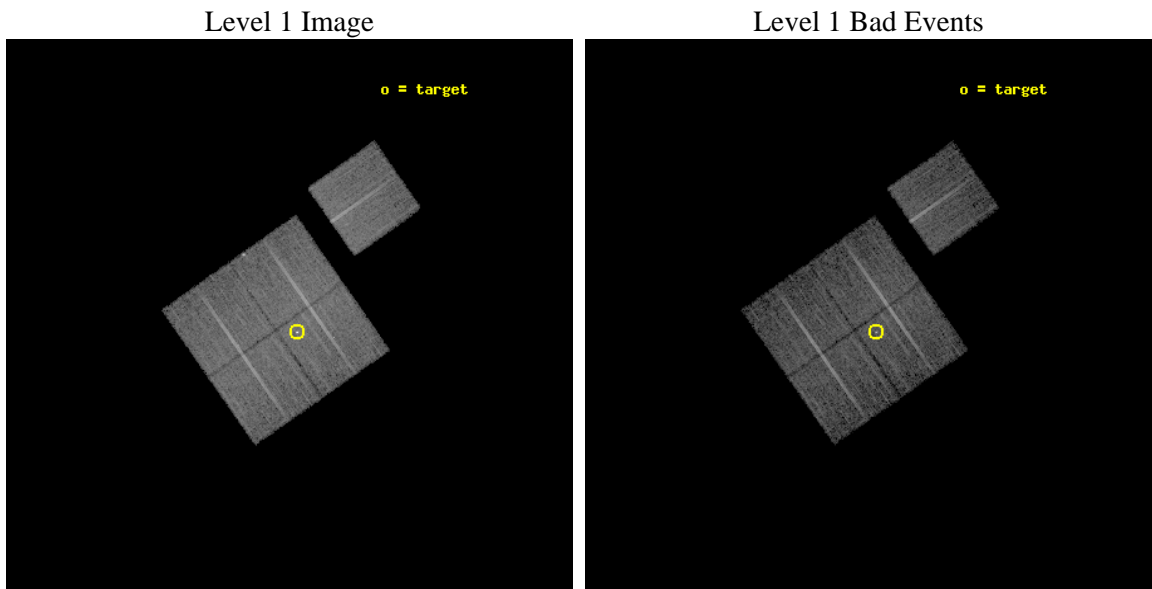
seq_num	700666	Sequence number
obs_id	3987	Observation id
title	DO QSO EXTENDED EMISSION REGIONS RESULT FROM COOLING FLOWS?	Propos
observer	Dr Alan Stockton	Principal investigator
object	4C 25.40 FIELD	Source name
dtcycle	0	
cycle	P	events from which exps? Prim/Second/Both
ra_targ	186.414583	Observer's specified target RA [deg]
dec_targ	24.976806	Observer's specified target Dec [deg]
ra_nom	186.42950196695	Nominal RA [deg]
dec_nom	24.992925997304	Nominal Dec [deg]
roll_nom	55.022983902432	Nominal Roll [deg]
revision	3	Processing version of data
ontime	15775.899969637	Sum of GTIs [s]
livetime	15569.776222485	Livetime [s]
ontime0	15775.899969637	Sum of GTIs [s]
ontime1	15769.618029147	Sum of GTIs [s]
ontime2	15772.75897944	Sum of GTIs [s]
ontime3	15775.899969637	Sum of GTIs [s]
ontime6	15775.899969637	Sum of GTIs [s]
l2events	33536	Number of level 2 events



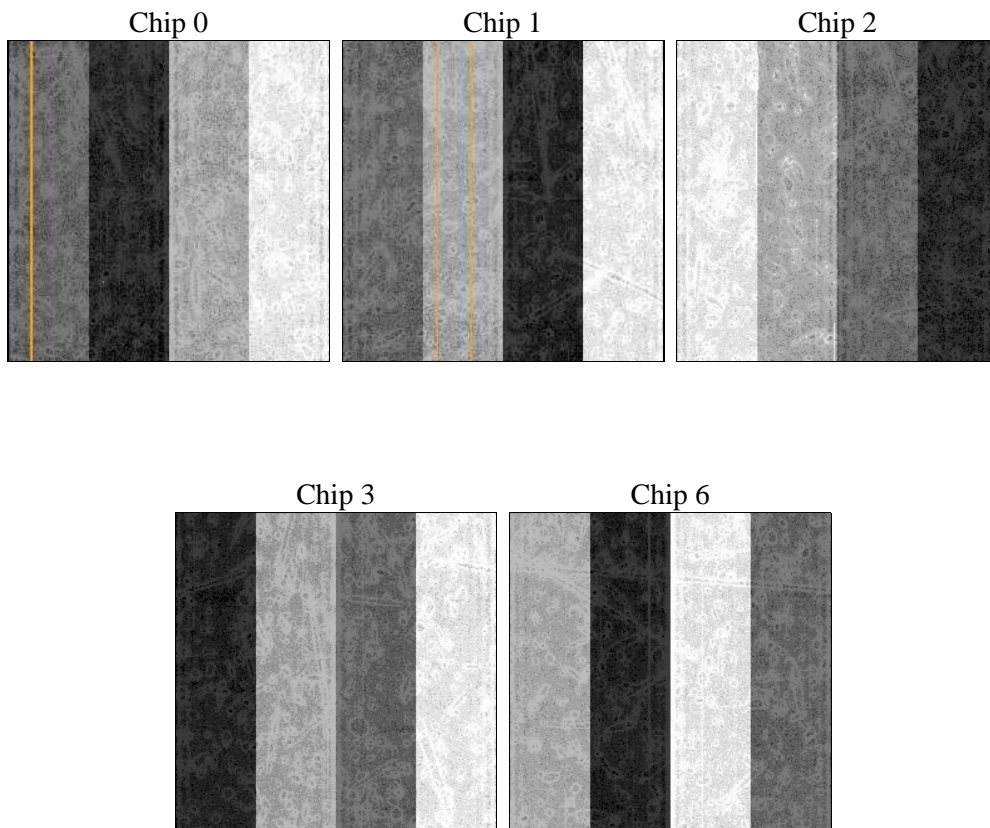
2 OBI

2.1 OBI

2.1.1 Images



2.1.2 Bias



2.1.3 Parameters

obi_num	5	Obi number	sched_exp_time	15651.000000	[s] Scheduled observation exposure time
ascdsver	8.4.5	Processing system revision	ontime	15775.899969637	Sum of GTIs [s]
caldbver	4.5.2	 	ontime0	15775.899969637	Sum of GTIs [s]
date	2012-11-08T07:56:56	Date and time of file creation	ontime1	15769.618029147	Sum of GTIs [s]
revision	3	Processing version of data	ontime2	15772.75897944	Sum of GTIs [s]
			ontime3	15775.899969637	Sum of GTIs [s]
			ontime6	15775.899969637	Sum of GTIs [s]
			l1events	324296	Number of level 1 events

2.1.4 Events

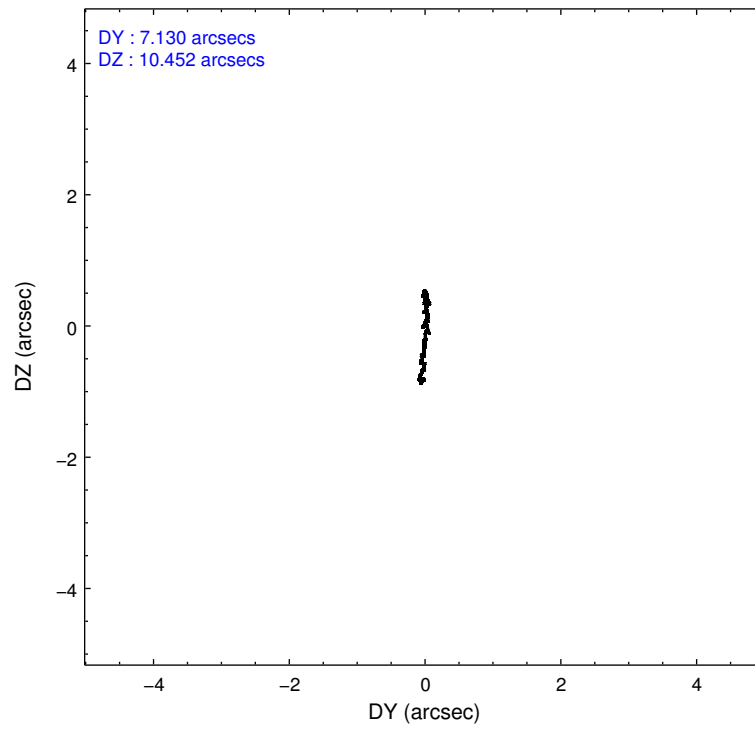
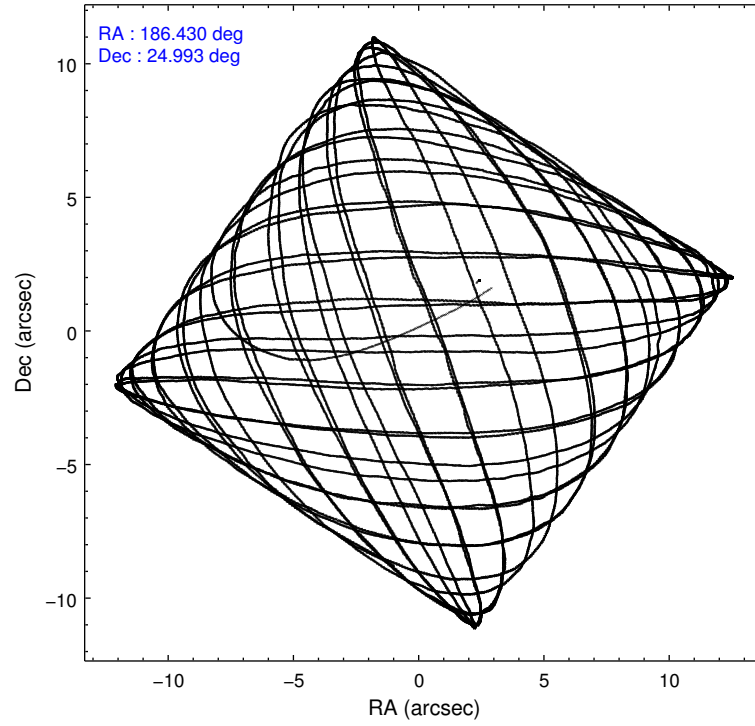
	ccd 0	ccd 1	ccd 2	ccd 3	ccd 6
level 1 events	60202	62464	67230	69834	64566
rejected events	53134	54853	59815	59760	57321
rejected %	88%	87%	88%	85%	88%

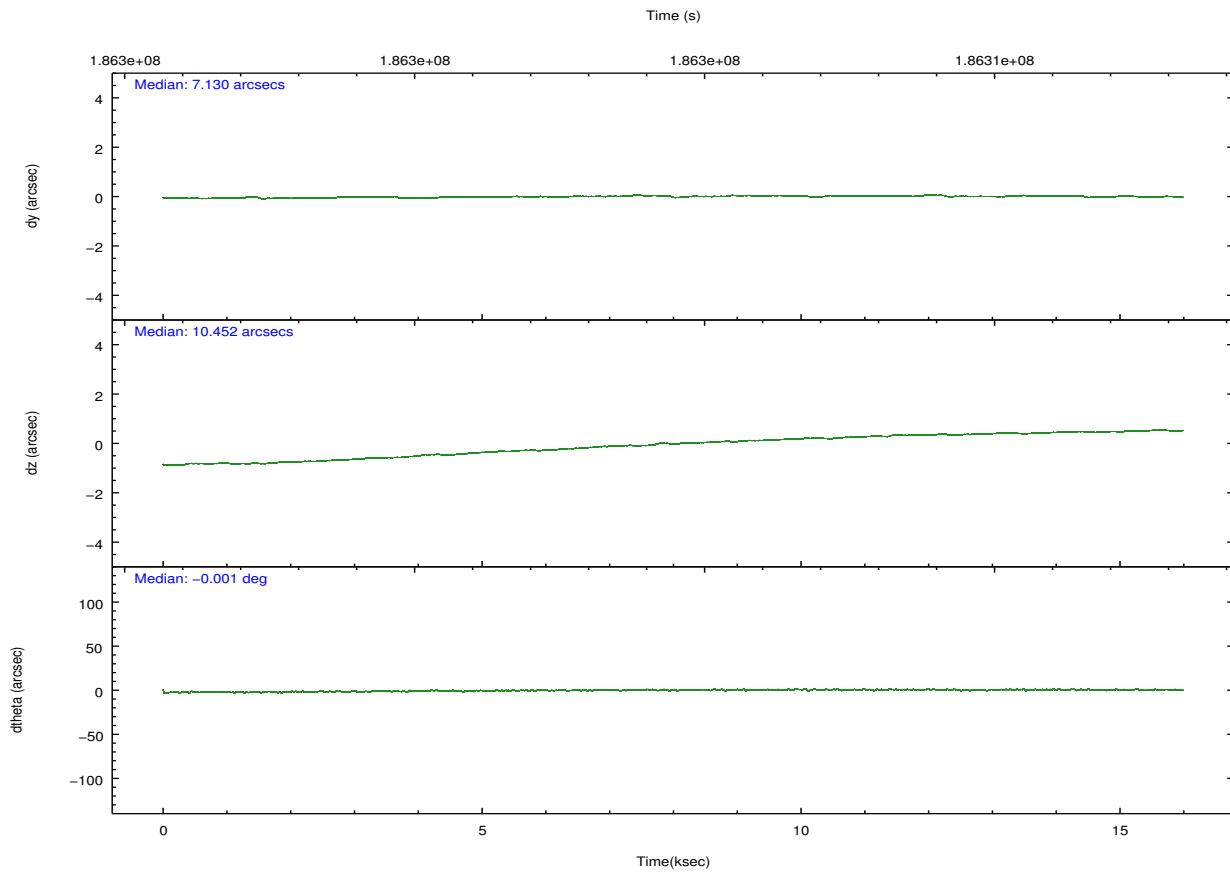
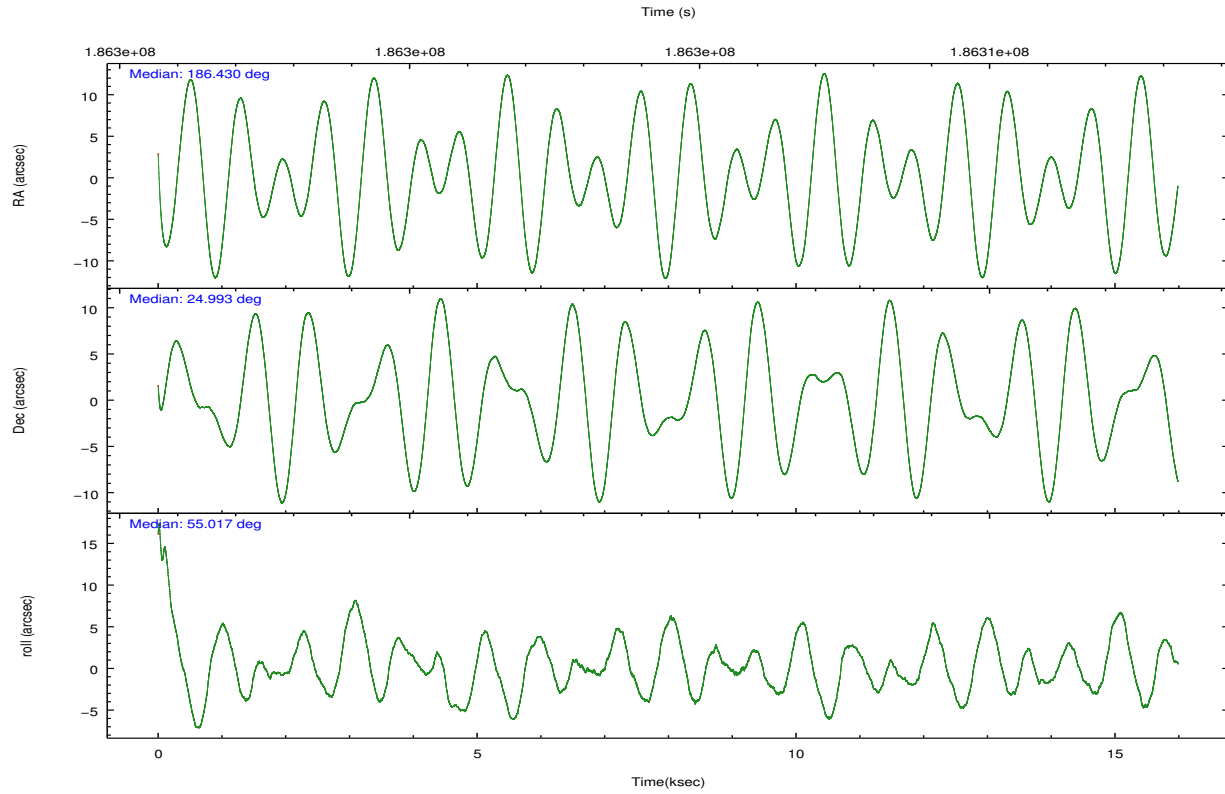
	ccd 0	ccd 1	ccd 2	ccd 3	ccd 6
grade 0 events	2585	2706	3104	4875	2608
	4%	4%	4%	6%	4%
grade 1 events	31	35	40	238	29
	0%	0%	0%	0%	0%
grade 2 events	1602	1641	1512	1859	1543
	2%	2%	2%	2%	2%
grade 3 events	786	888	765	927	782
	1%	1%	1%	1%	1%
grade 4 events	732	863	759	933	793
	1%	1%	1%	1%	1%
grade 5 events	2447	2617	2289	2940	2693
	4%	4%	3%	4%	4%
grade 6 events	1365	1515	1275	1481	1523
	2%	2%	1%	2%	2%
grade 7 events	50654	52199	57486	56581	54595
	84%	83%	85%	81%	84%

2.2 Compared Parameters

Parameter	Planned	Actual	Parameter	Planned	Actual
Instrument	ACIS	ACIS	Obspar format version number	7	7
Detector	ACIS-01236	ACIS-01236	Obspar file type	PREDICTED	ACTUAL
Grating	NONE	NONE	Obspar update status	NONE	UPDATED
Data mode	VFAINT	VFAINT	Number of optional ACIS chips dropped	0	0
Observation mode	POINTING	POINTING	On-chip summing requested	N	N
[deg] Pointing RA	186.427011	186.4295019669527	Subarray requested	NONE	NONE
[deg] Pointing Dec	24.965595	24.99292599730444	Alternating exposures requested	N	N
[deg] Pointing Roll	54.815343	55.02298390243189	[s] Primary exposure time	0.000000	3.1
[mm] SIM focus pos	-0.782348	-0.7809083437167272			
[mm] SIM defocus	0	0.001439871863259334			
[mm] SIM translation stage pos	-230.632463	-230.6305996661941			
[mm] SIM translation stage offset	-2.96	-2.961853336735572			
[s] Observation start time (MET)	186296799.184000	186295751.15491			
Observation start date	2003-11-27T05:05:35	2003-11-27T04:49:11			
[s] Observation end time (MET)	186312450.184000	186313426.76817			
Observation end date	2003-11-27T09:26:26	2003-11-27T09:43:46			
Read mode	TIMED	TIMED			

2.3 Aspect



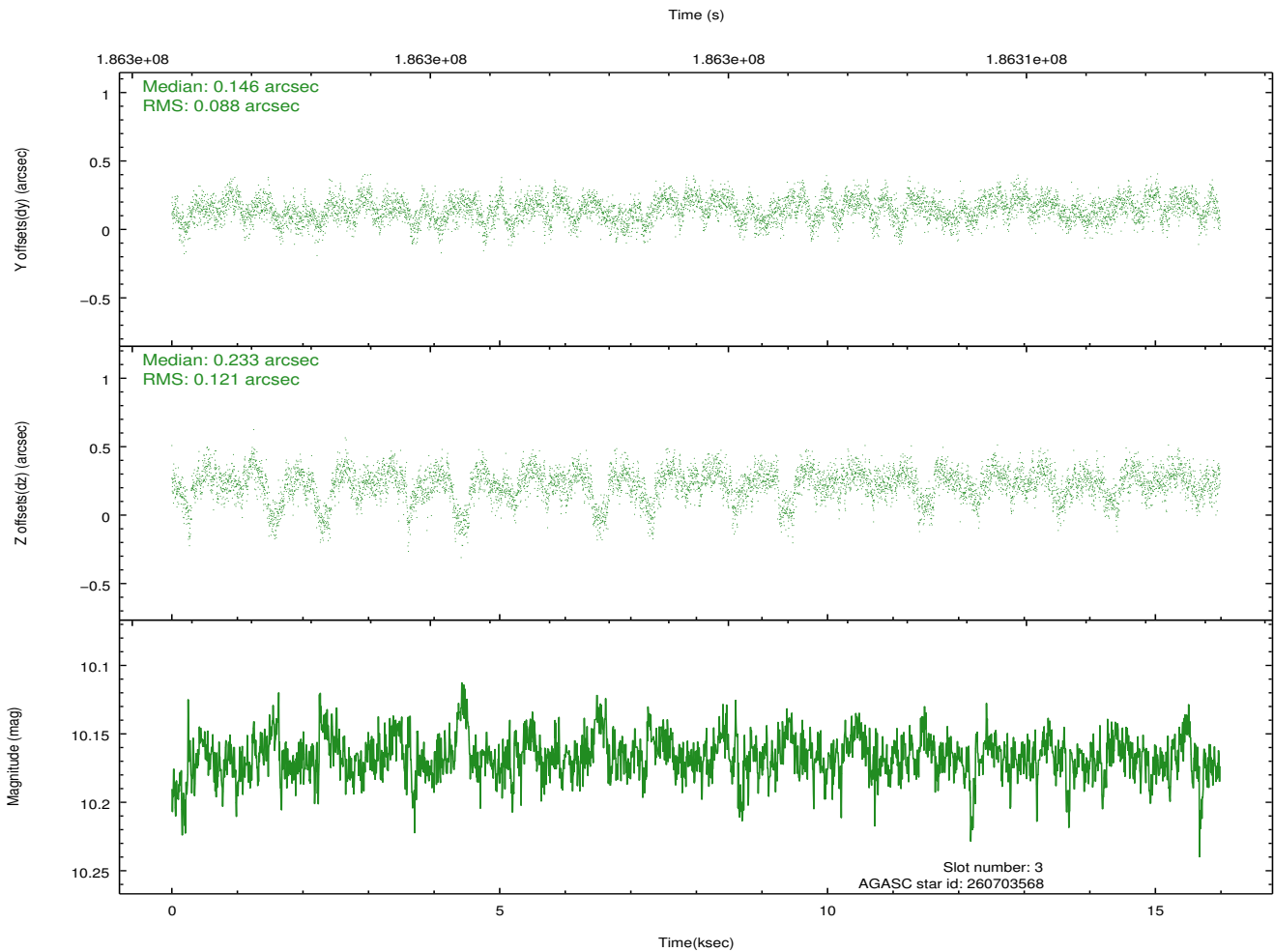
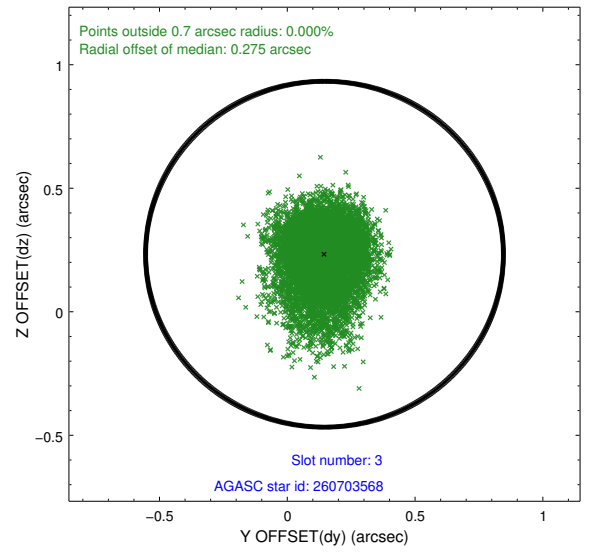
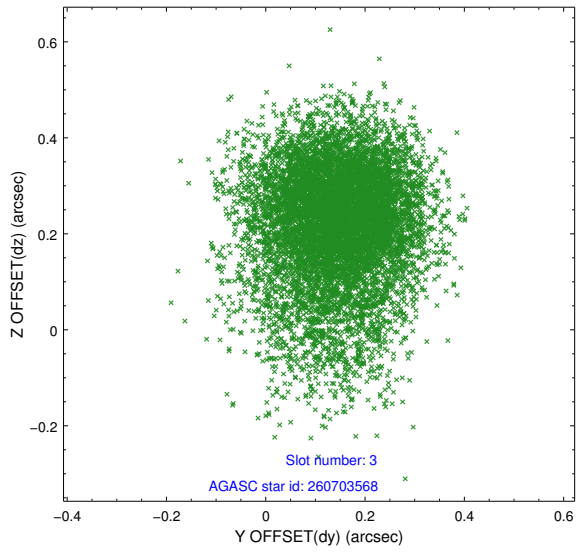


Slot Statistics

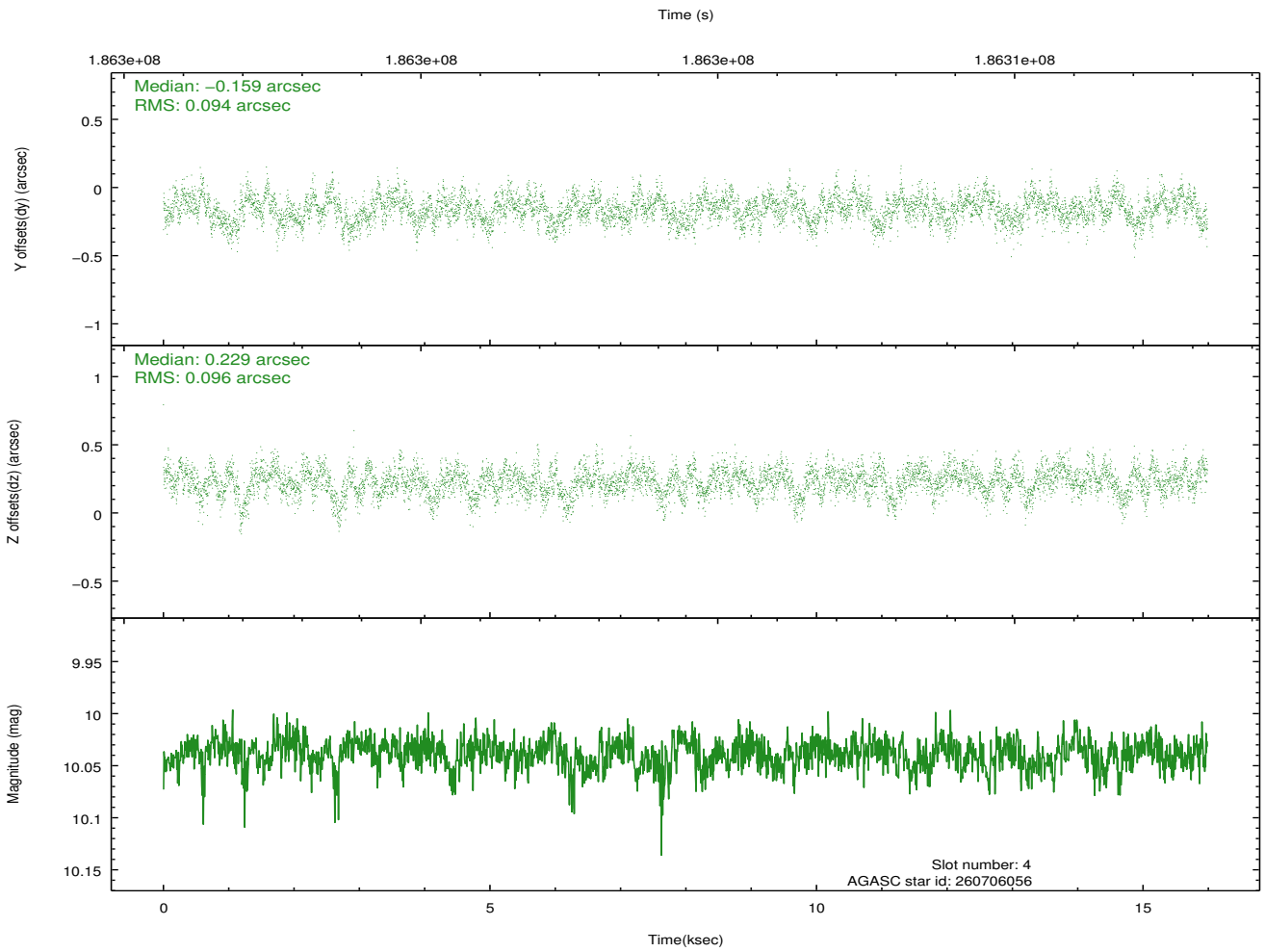
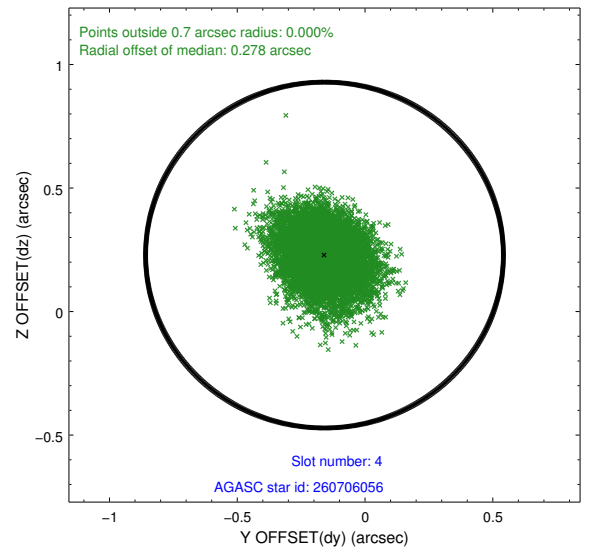
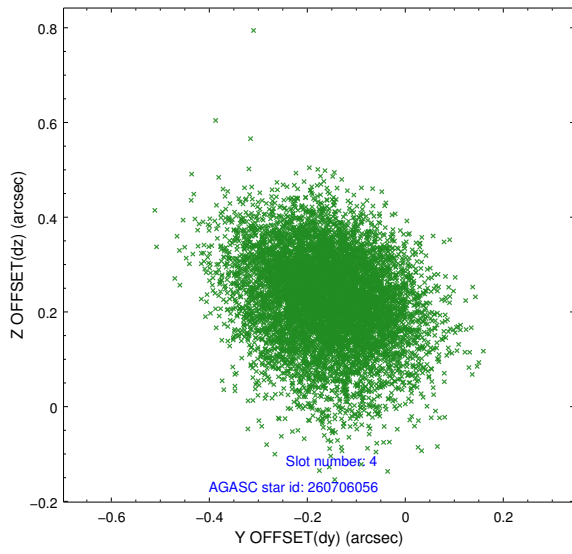
slot	status	id	mag	n_pts	med_dy	med_dz	dr1	dr2	ra	dec	mean_y	mean_z
0	FID	ACIS-I-1	7.24	3900	0.067	-0.025	0.011	0.019	0.000000	0.000000	932.54	-894.62
1	FID	ACIS-I-5	7.23	3900	-0.178	0.082	0.011	0.020	0.000000	0.000000	-1815.61	1002.88
2	FID	ACIS-I-6	7.26	3900	0.020	0.016	0.016	0.024	0.000000	0.000000	397.80	1647.58
3	GUIDE	260703568	10.17	7790	0.146	0.233	0.153	0.268	186.567794	24.177002	-2053.32	-2013.59
4	GUIDE	260706056	10.04	7792	-0.159	0.229	0.143	0.234	186.811242	24.885942	489.79	-1189.43
5	GUIDE	260727904	6.68	7799	-0.039	-0.073	0.085	0.151	185.545112	24.773863	-2217.77	1963.58
6	GUIDE	260714336	7.25	7799	0.117	-0.160	0.083	0.128	185.874901	24.593254	-2134.18	706.94
7	GUIDE	260703392	10.47	7790	-0.069	-0.218	0.163	0.262	186.247247	25.669619	1735.13	1937.75

2.4 Star Slots

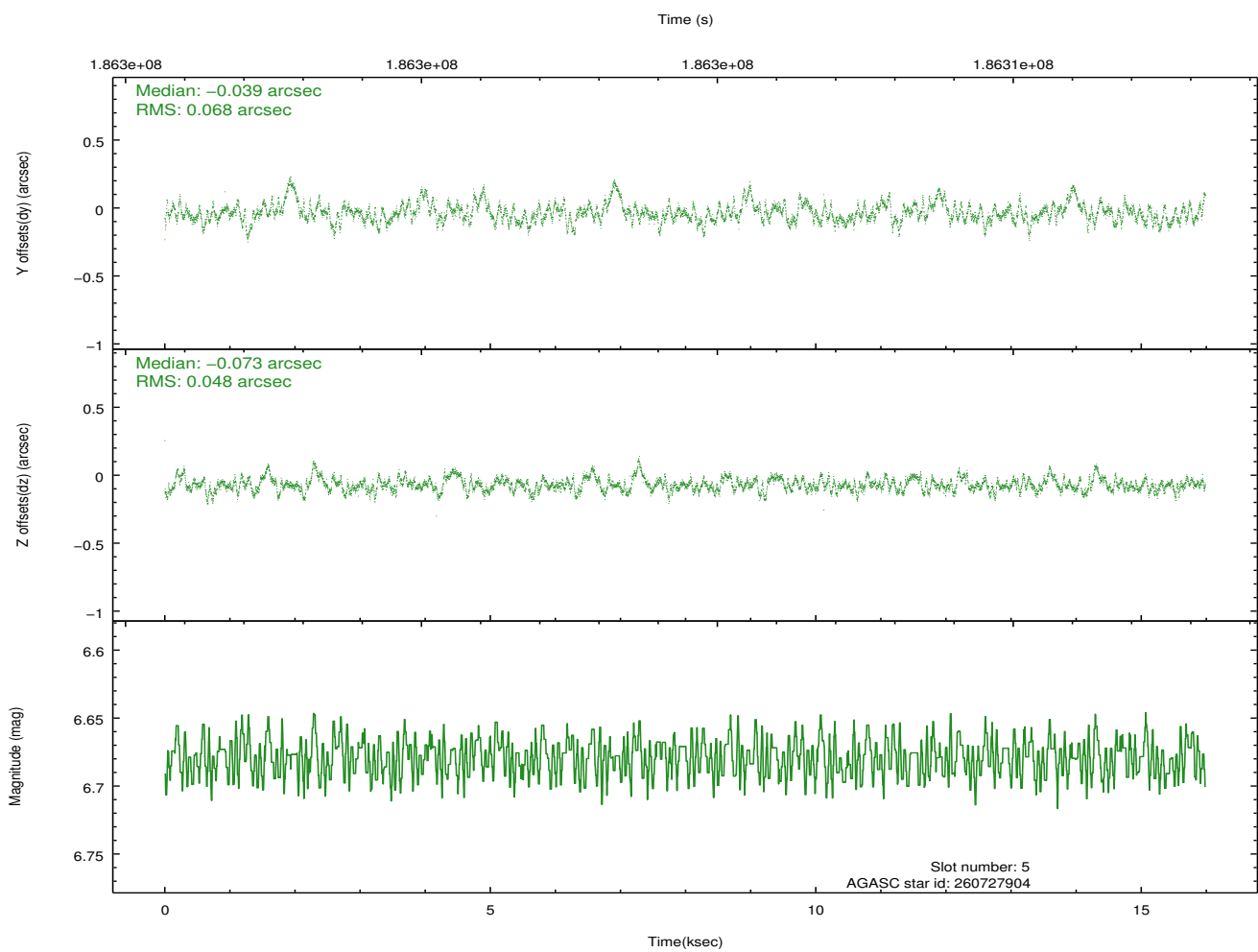
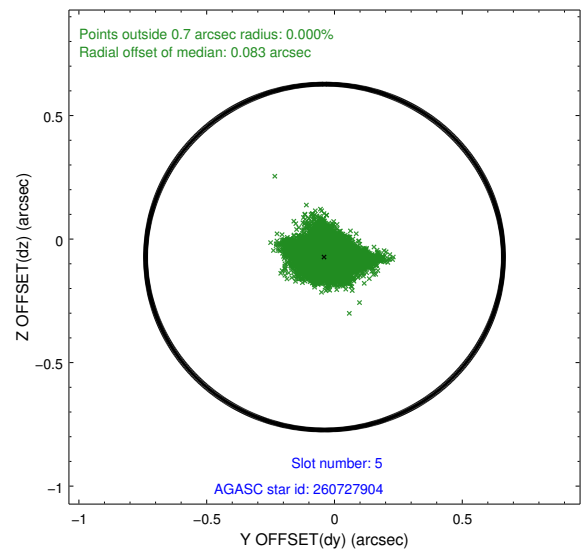
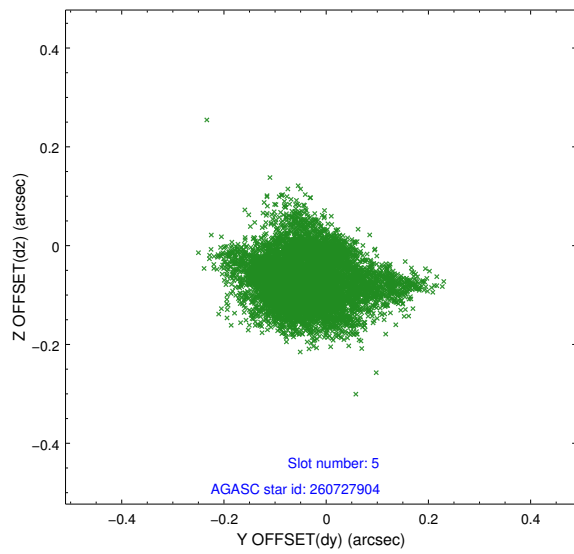
2.4.1 Slot 3



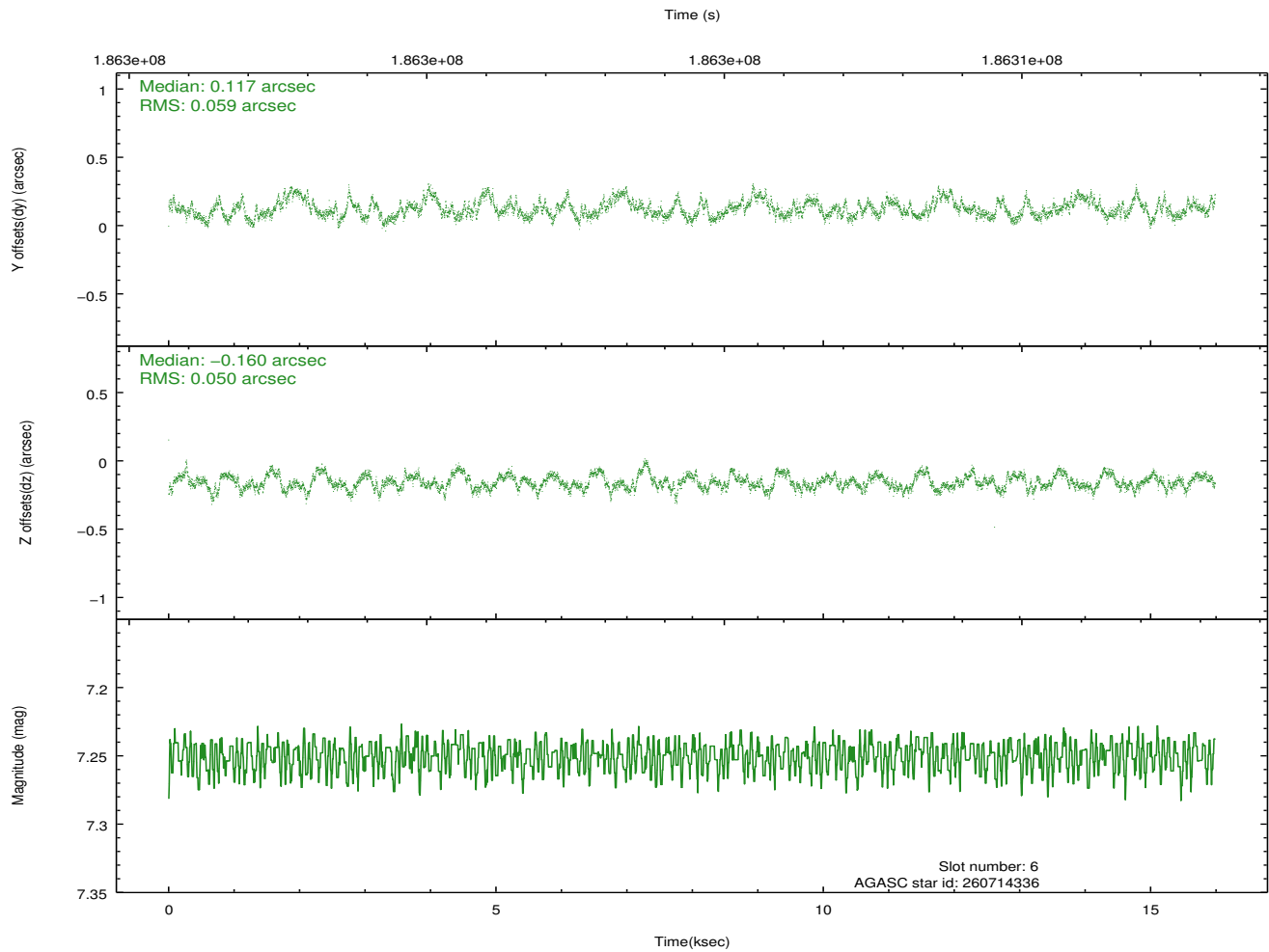
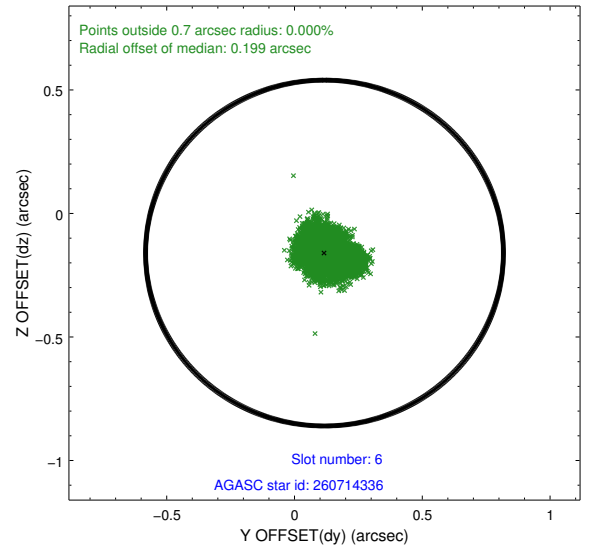
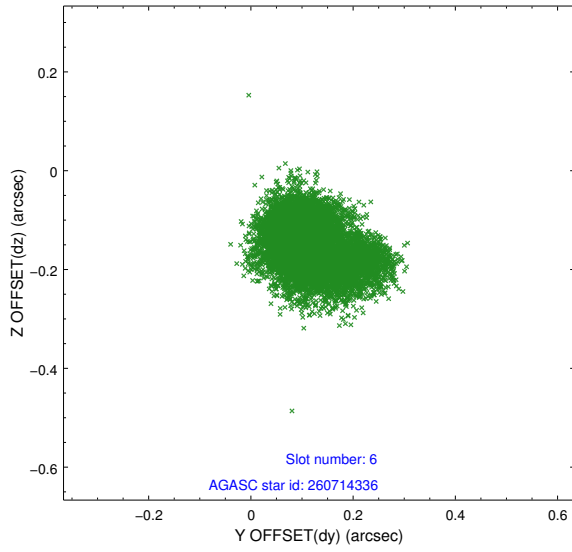
2.4.2 Slot 4



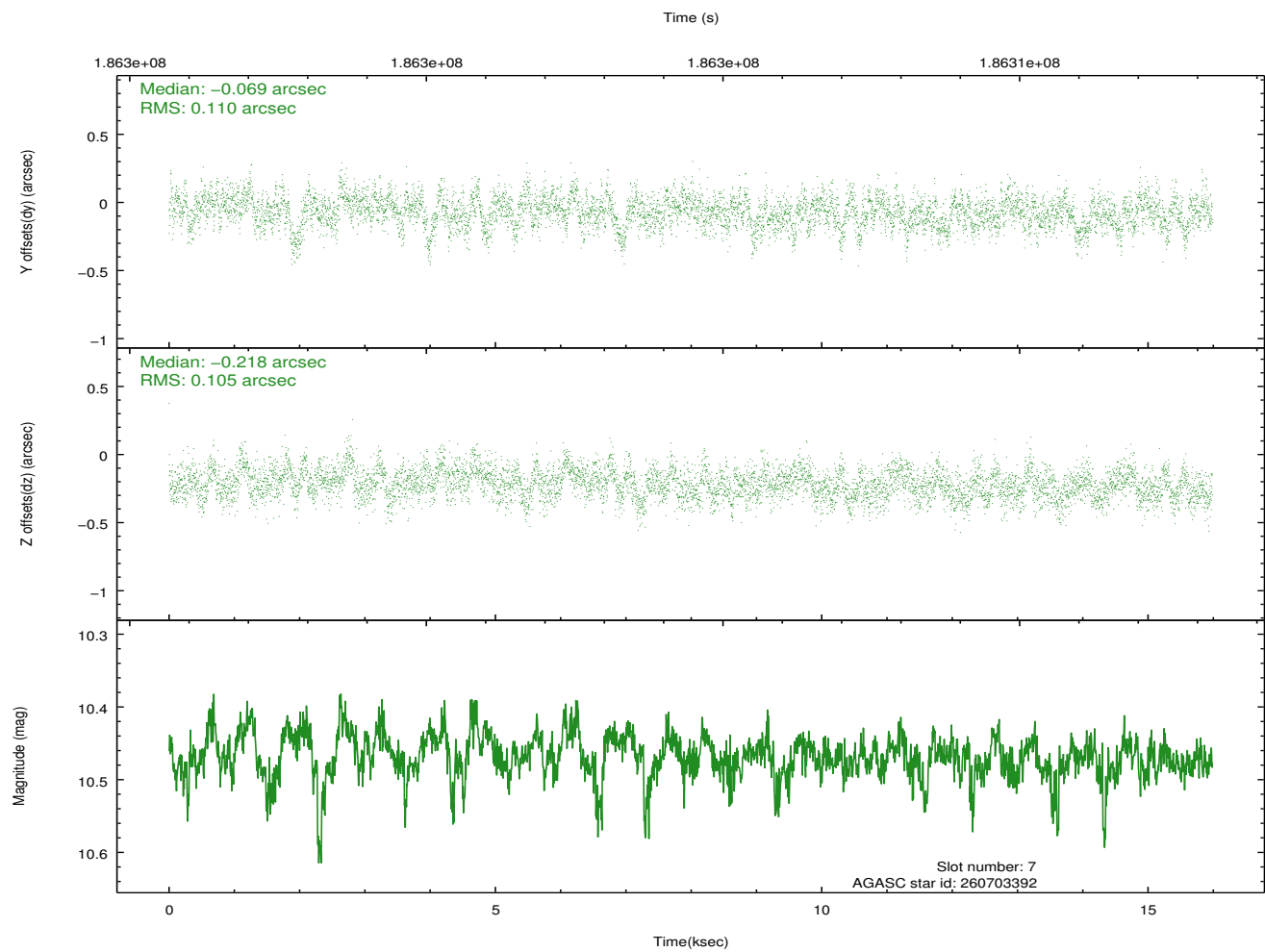
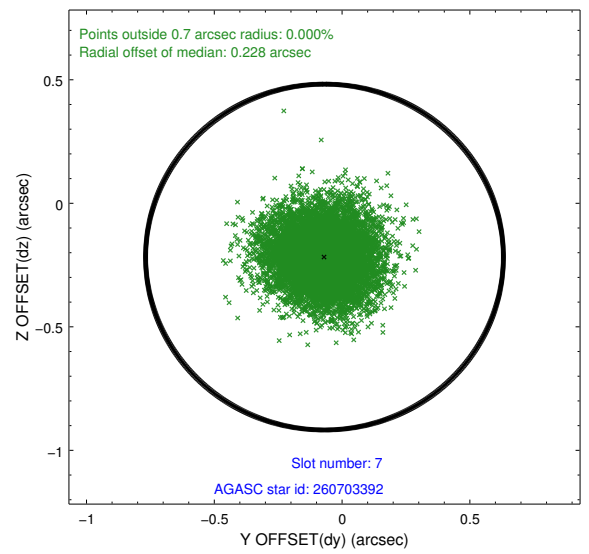
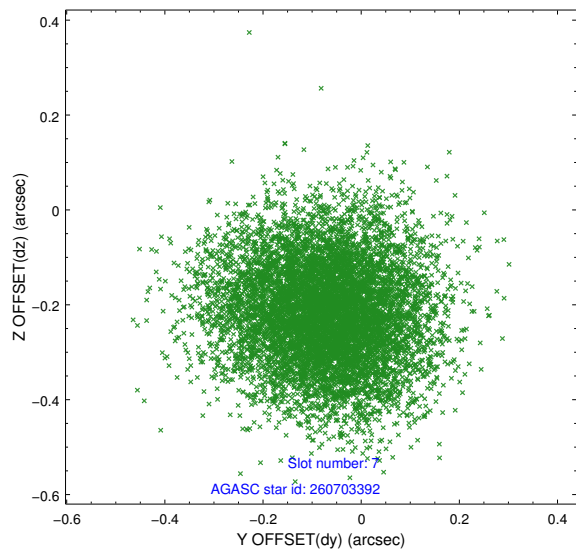
2.4.3 Slot 5



2.4.4 Slot 6

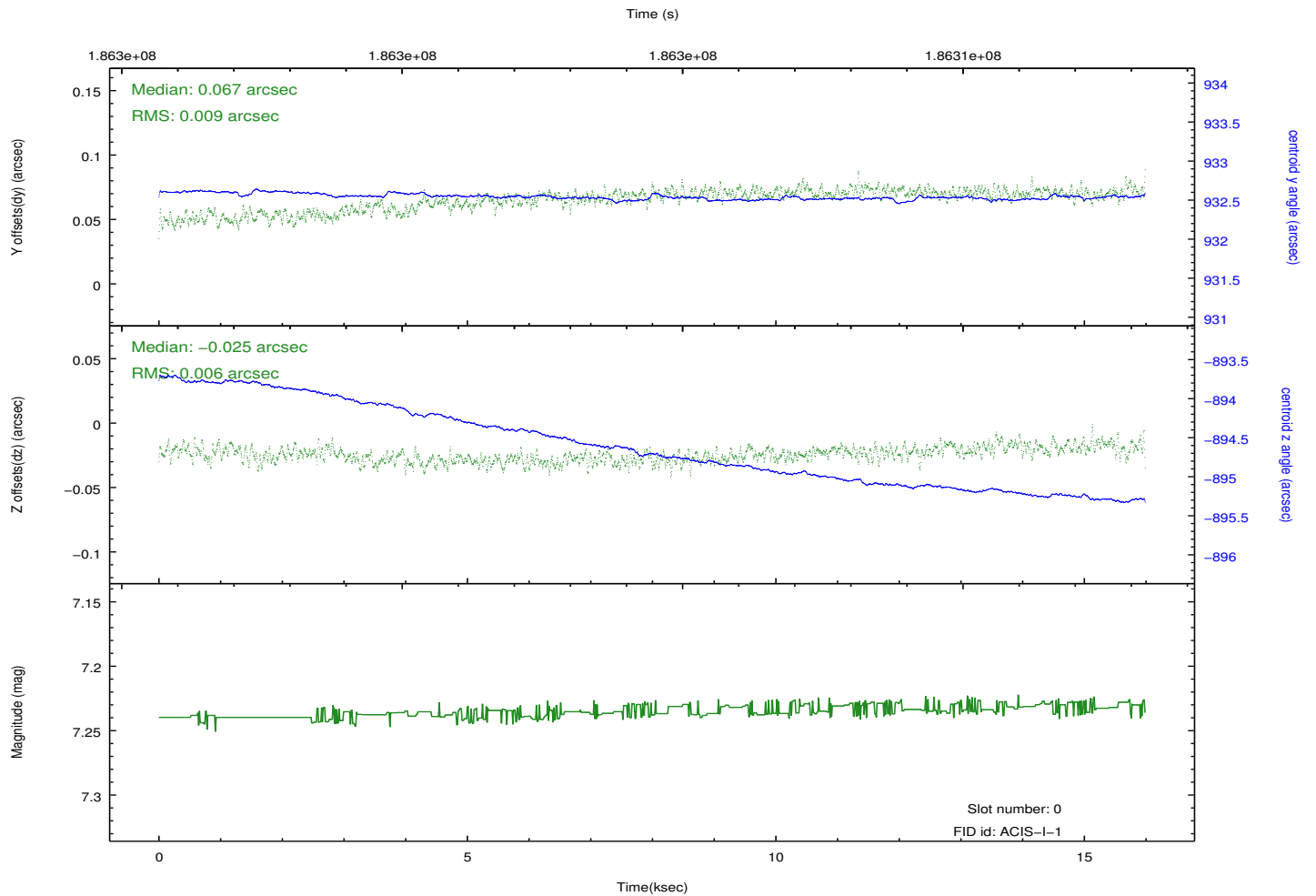
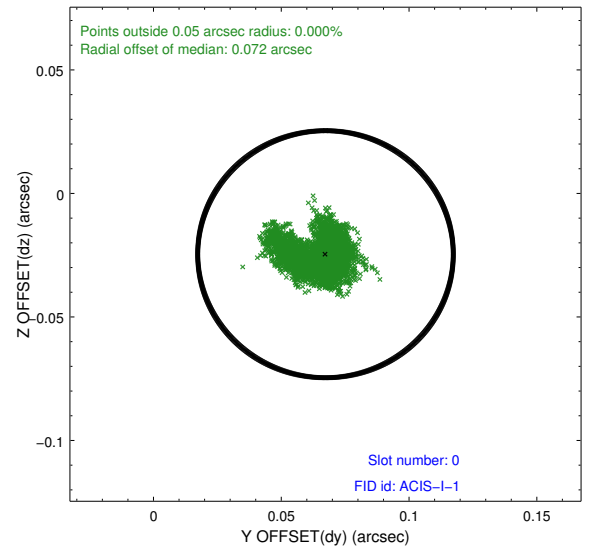
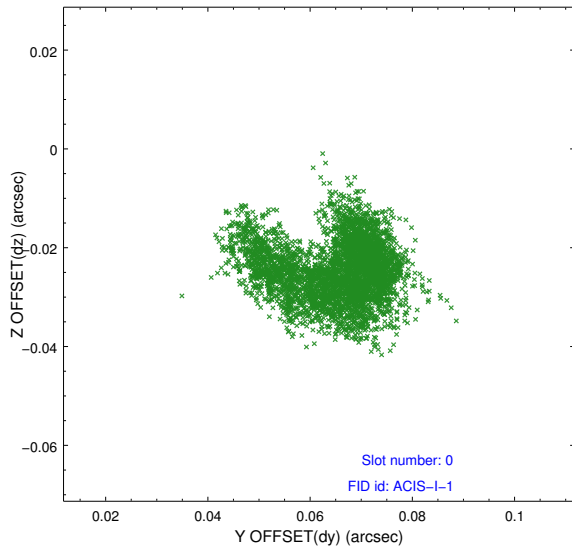


2.4.5 Slot 7

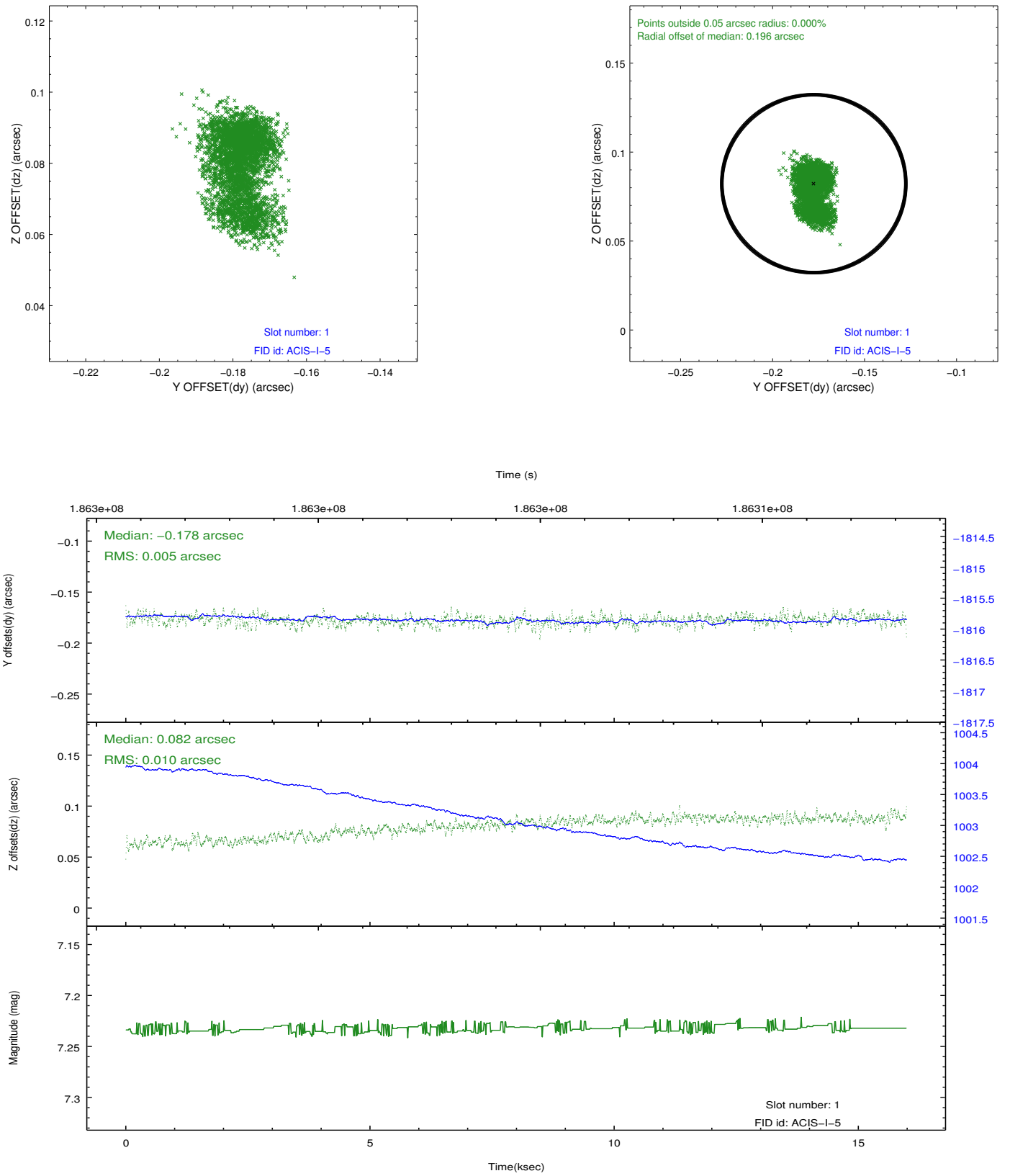


2.5 FID Slots

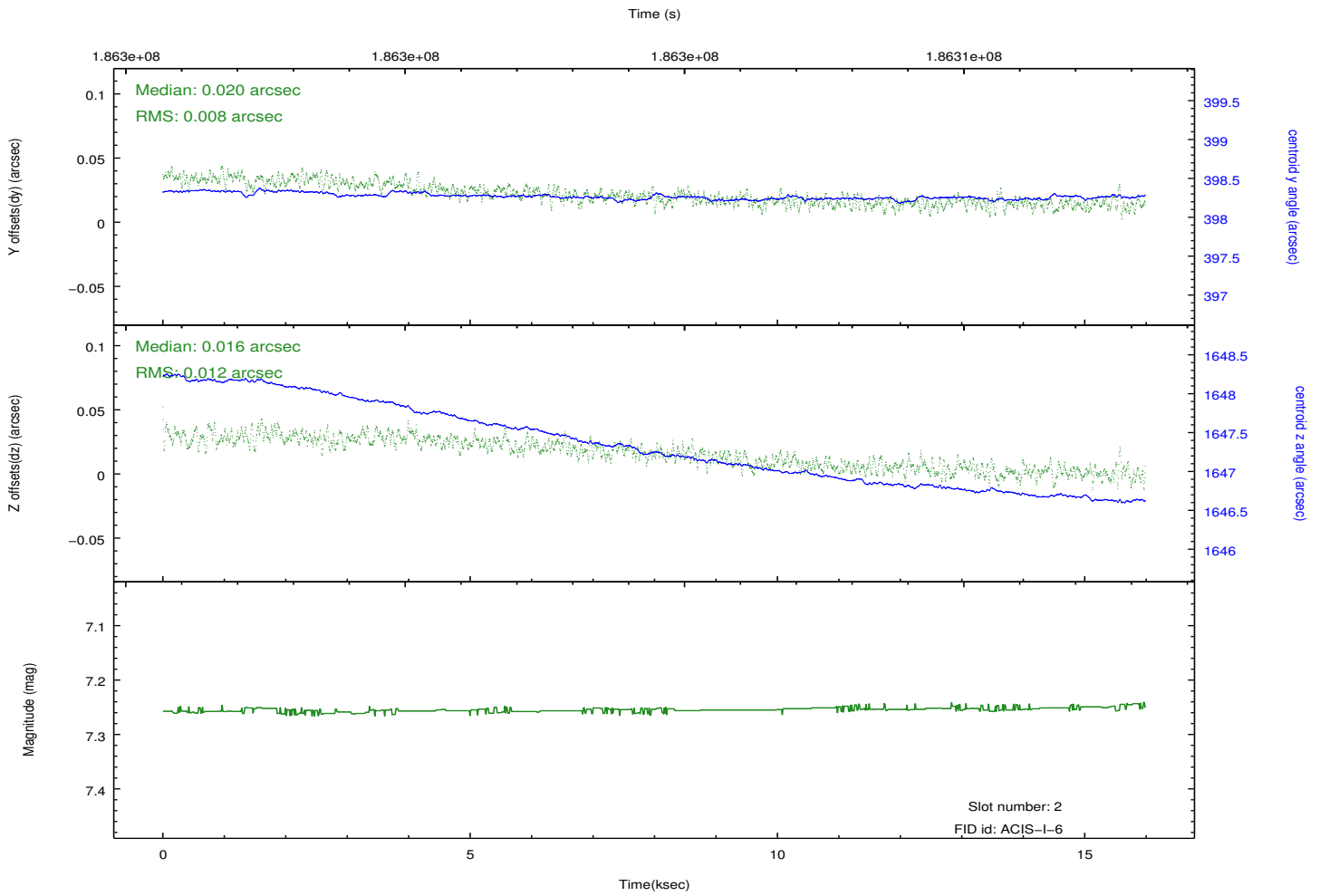
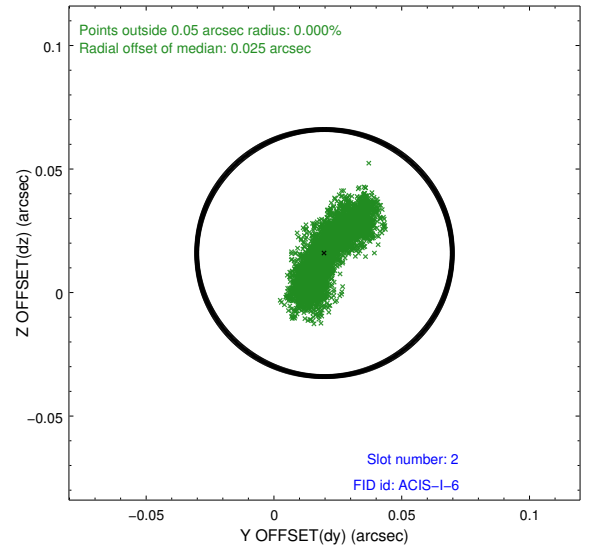
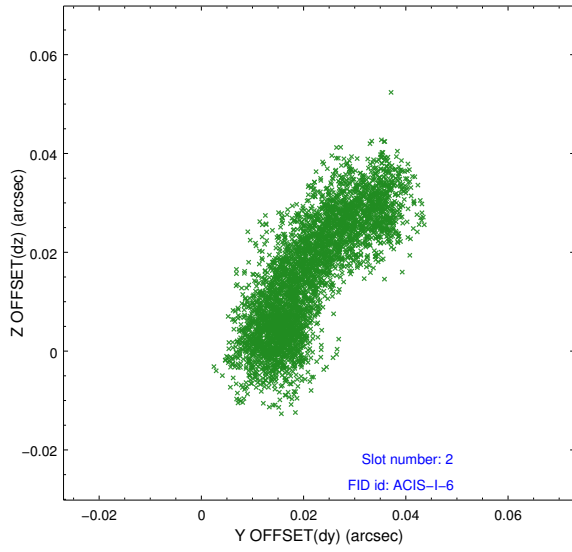
2.5.1 Slot 0



2.5.2 Slot 1



2.5.3 Slot 2



A Summary

A.1 Status

V&V Scientist	Jen Lauer
V&V Date (YYYY-MM-DD)	2012.12.02
V&V Edition	1
V&V Disposition and Status	OK
V&V Charge Time	15.779

A.2 Comments