

V&V Reference Report

L2 ASCDS Version : 8.4.5

Observation 4007 - L2 Version 3
Chandra X-Ray Center

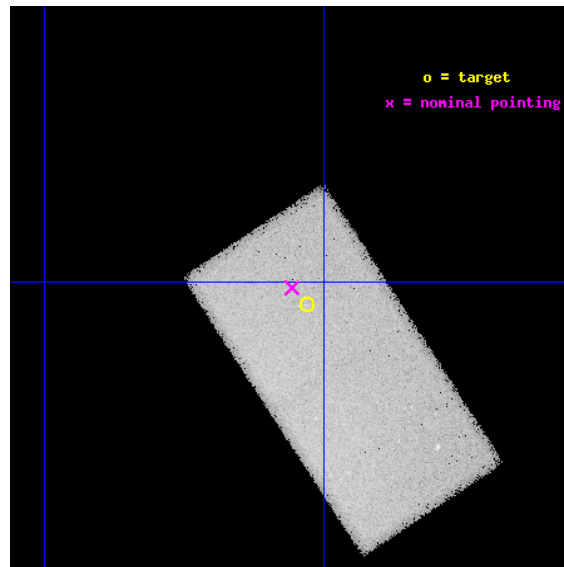
L2 Processing Date : Nov 8 2012

Contents

1	Front	2
2	OBI	3
2.1	OBI	3
2.1.1	Images	3
2.1.2	Bias	3
2.1.3	Parameters	4
2.1.4	Events	4
2.2	Compared Parameters	5
2.3	Aspect	6
2.4	Star Slots	9
2.4.1	Slot 3	9
2.4.2	Slot 4	10
2.4.3	Slot 5	11
2.4.4	Slot 6	12
2.4.5	Slot 7	13
2.5	FID Slots	14
2.5.1	Slot 0	14
2.5.2	Slot 1	15
2.5.3	Slot 2	16
A	Summary	17
A.1	Status	17
A.2	Comments	17

1 Front

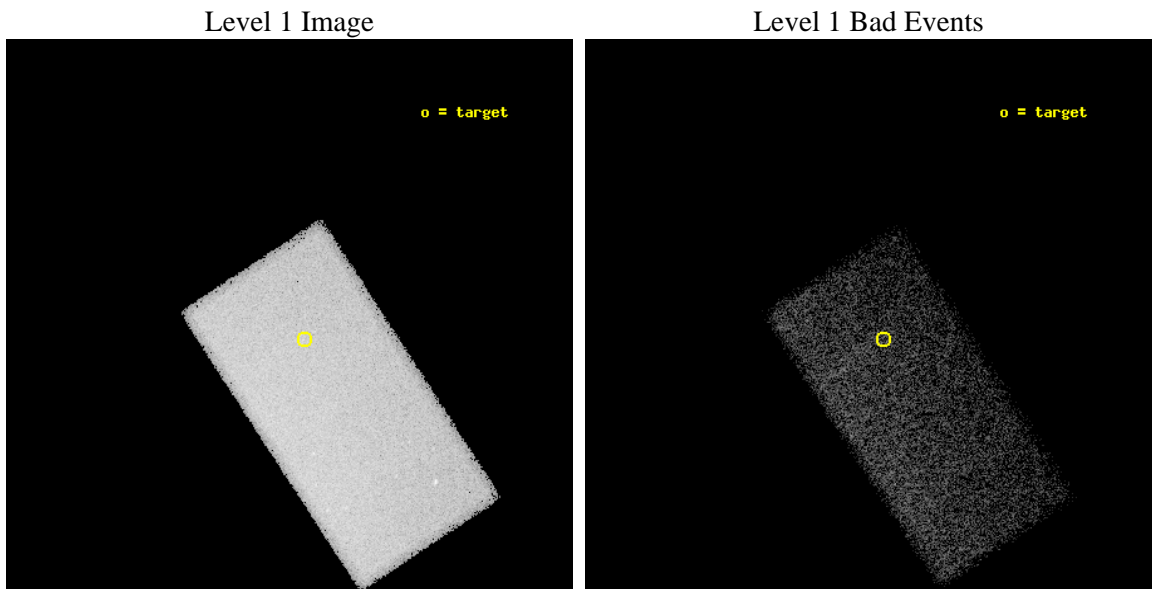
seq_num	700686	Sequence number
obs_id	4007	Observation id
title	QUIESCENT SUPERMASSIVE BLACK HOLES	Proposal title
observer	Dr. Giuseppina Fabbiano	Principal investigator
object	NGC 4486B	Source name
dtycle	0	
cycle	P	events from which exps? Prim/Second/Both
ra_targ	187.6325	Observer's specified target RA [deg]
dec_targ	12.490556	Observer's specified target Dec [deg]
ra_nom	187.63930374899	Nominal RA [deg]
dec_nom	12.497609150311	Nominal Dec [deg]
roll_nom	56.770727822586	Nominal Roll [deg]
revision	3	Processing version of data
ontime	37167.0	Sum of GTIs [s]
livetime	36177.192026164	Livetime [s]
ontime7	37167.0	Sum of GTIs [s]
l2events	252208	Number of level 2 events



2 OBI

2.1 OBI

2.1.1 Images



2.1.2 Bias

Chip 7



2.1.3 Parameters

obi_num	0	Obi number	sched_exp_time	37000.000000	[s] Scheduled observation exposure time
ascdsver	8.4.5	Processing system revision	ontime	37167.0	Sum of GTIs [s]
caldbver	4.5.2	 	ontime7	37167.0	Sum of GTIs [s]
date	2012-11-08T03:07:43	Date and time of file creation	l1events	333383	Number of level 1 events
revision	3	Processing version of data			

2.1.4 Events

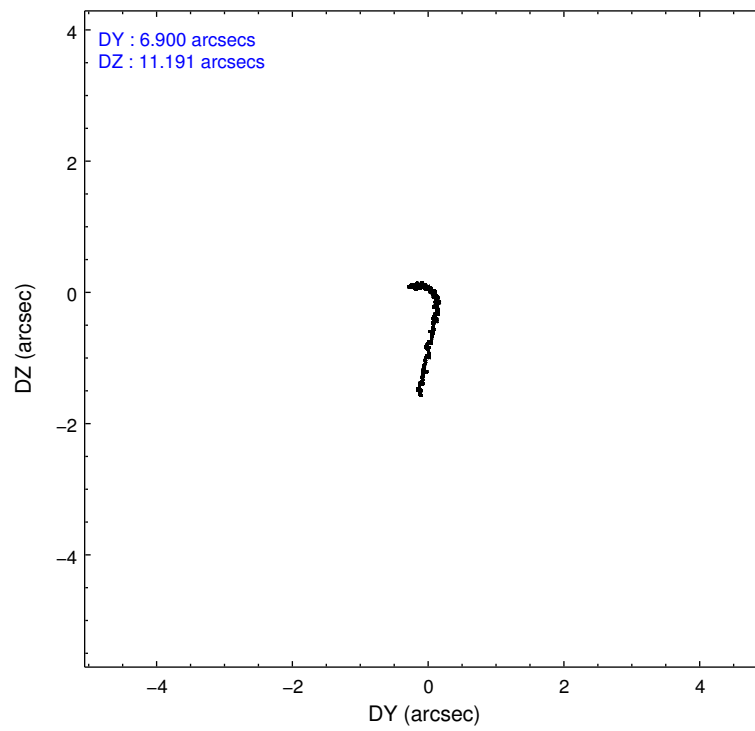
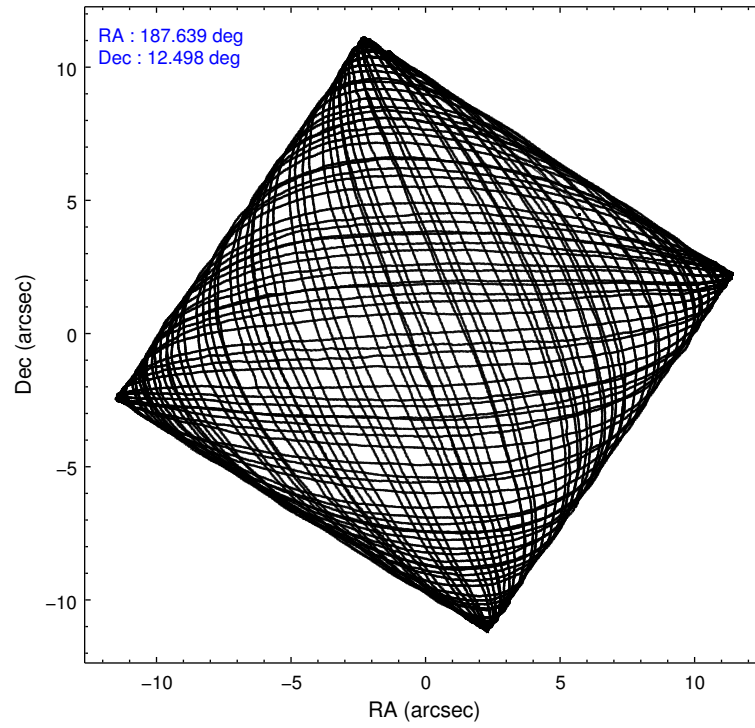
	ccd 7
level 1 events	333383
rejected events	77874
rejected %	23%

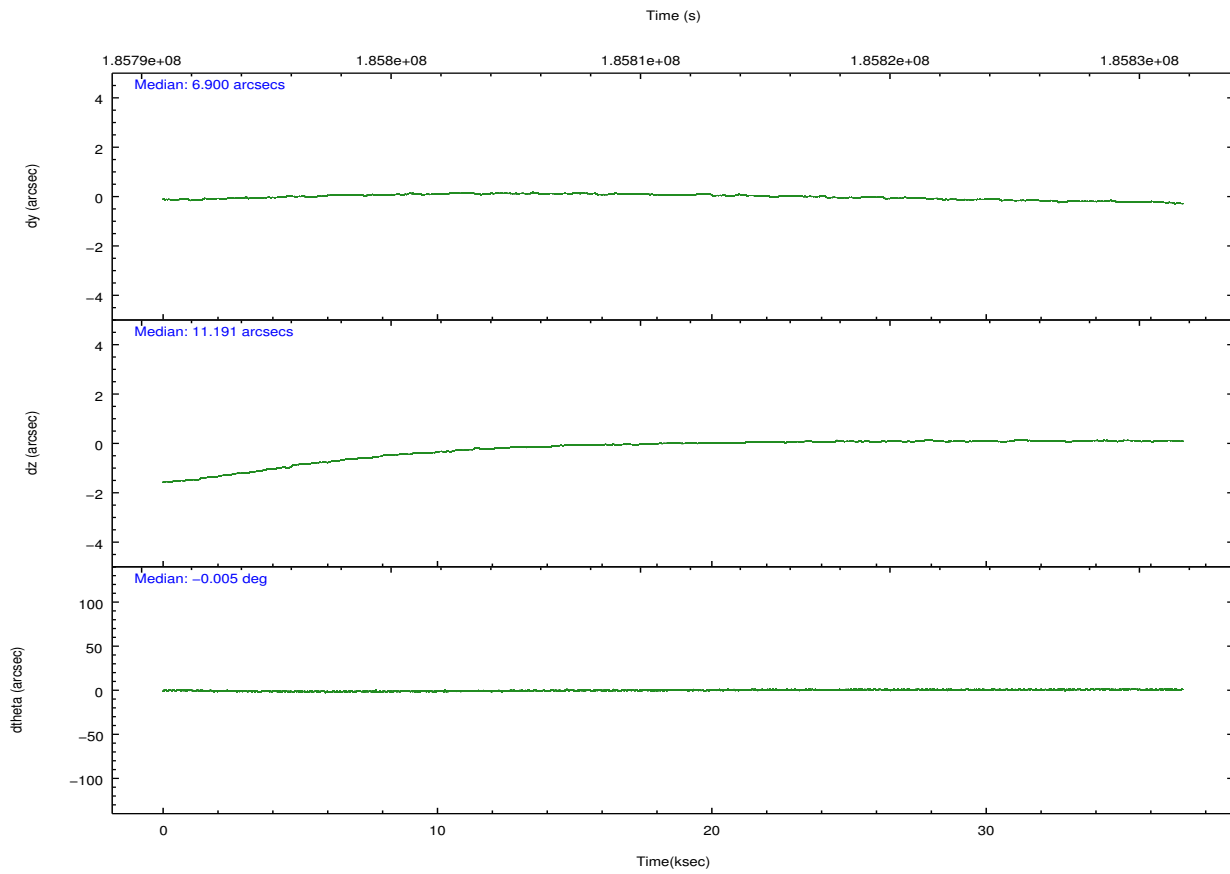
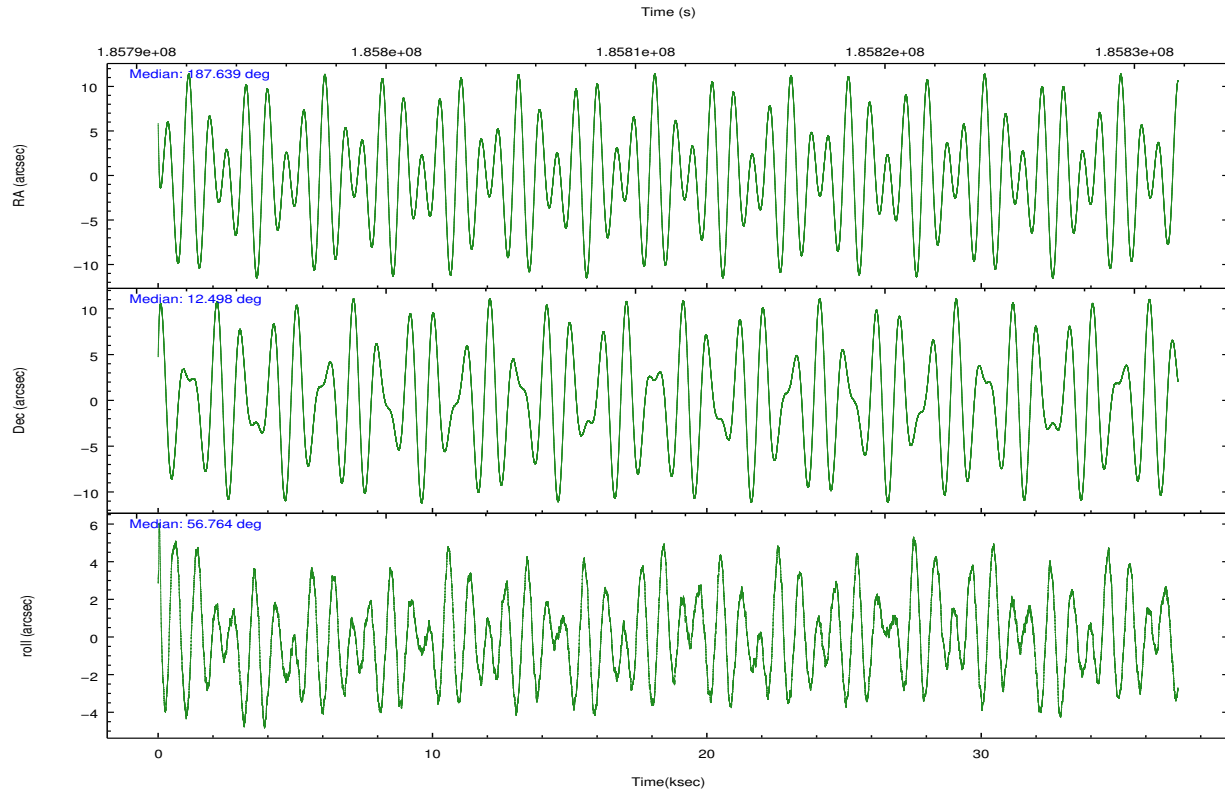
	ccd 7
grade 0 events	70880
	21%
grade 1 events	198
	0%
grade 2 events	63695
	19%
grade 3 events	28416
	8%
grade 4 events	28589
	8%
grade 5 events	13487
	4%
grade 6 events	65782
	19%
grade 7 events	62336
	18%

2.2 Compared Parameters

Parameter	Planned	Actual	Parameter	Planned	Actual
Instrument	ACIS	ACIS	Obspar format version number	7	7
Detector	ACIS-7	ACIS-7	Obspar file type	PREDICTED	ACTUAL
Grating	NONE	NONE	Obspar update status	NONE	UPDATED
Data mode	VFAINT	VFAINT	Number of optional ACIS chips dropped	0	0
Observation mode	POINTING	POINTING	On-chip summing requested	N	N
[deg] Pointing RA	187.638109	187.6393037489881	Subarray requested	CUSTOM	1/2
[deg] Pointing Dec	12.470383	12.49760915031149	Subarray start row	257	257
[deg] Pointing Roll	56.614360	56.77072782258573	Subarray row count	512	512
[mm] SIM focus pos	-0.684267	-0.6828225247311905	Alternating exposures requested	N	N
[mm] SIM defocus	0	0.001444936568705701	[s] Primary exposure time	0.000000	1.5
[mm] SIM translation stage pos	-190.132523	-190.1400660498719			
[mm] SIM translation stage offset	0	0.00754346686406393			
[s] Observation start time (MET)	185792890.184000	185791927.24557			
Observation start date	2003-11-21T09:07:06	2003-11-21T08:52:07			
[s] Observation end time (MET)	185829890.184000	185830057.75972			
Observation end date	2003-11-21T19:23:46	2003-11-21T19:27:37			
Read mode	TIMED	TIMED			

2.3 Aspect



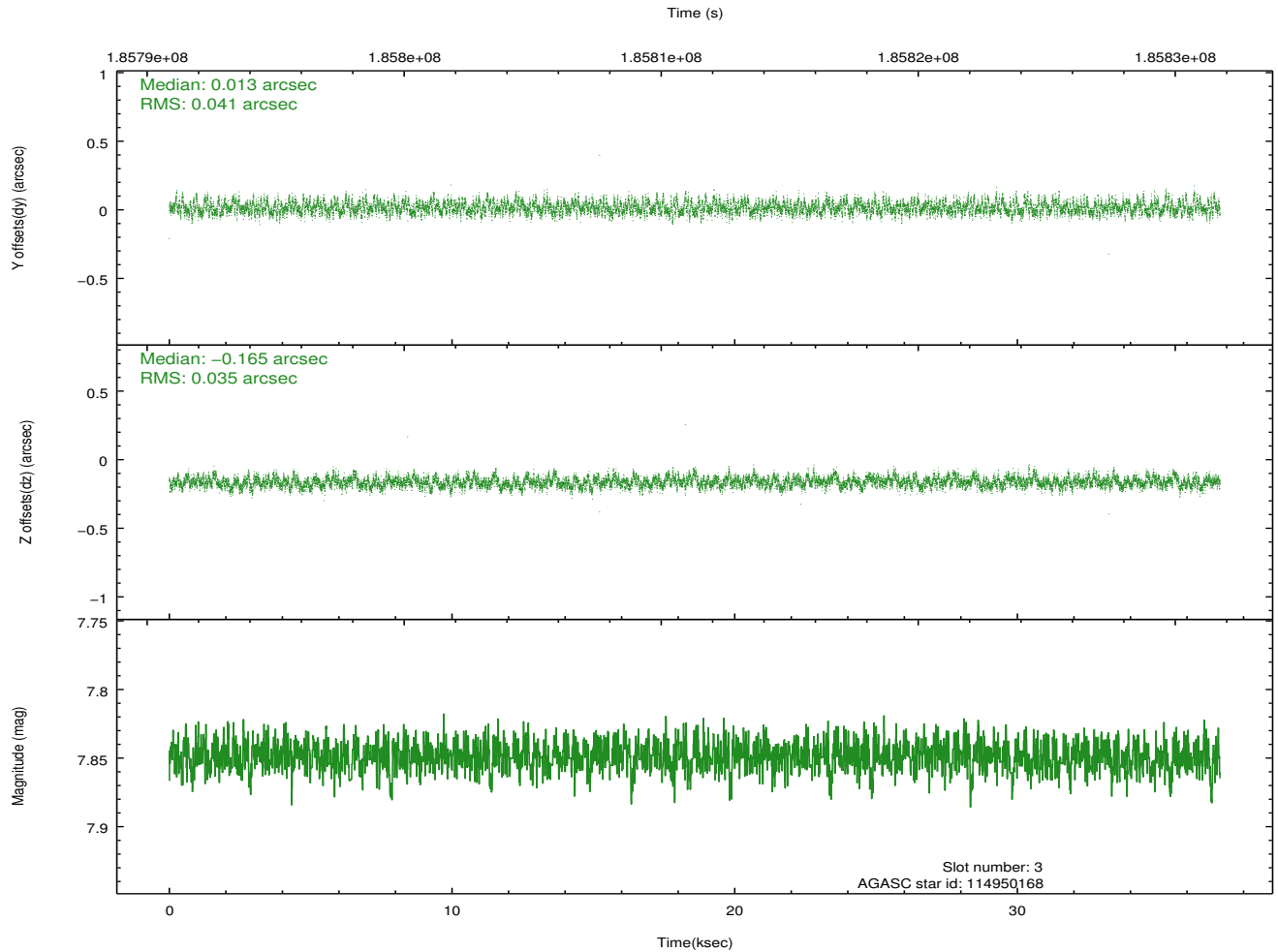
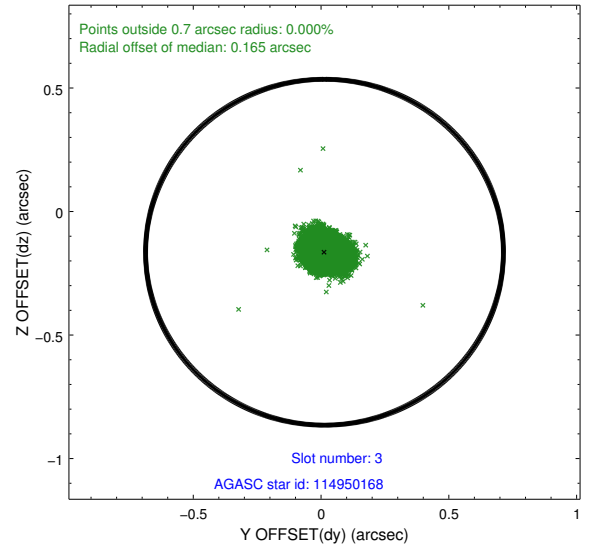
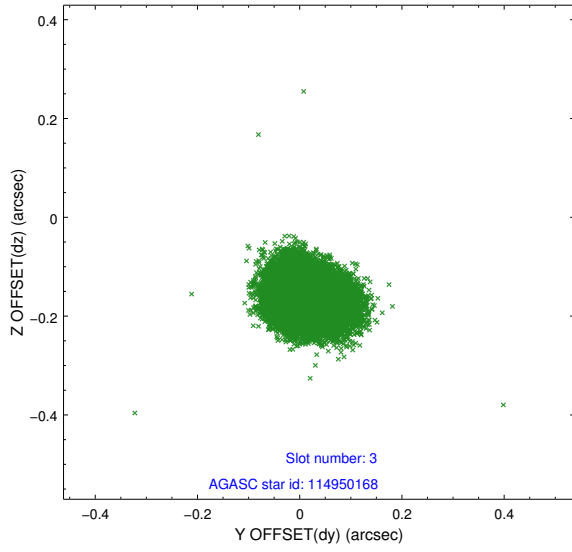


Slot Statistics

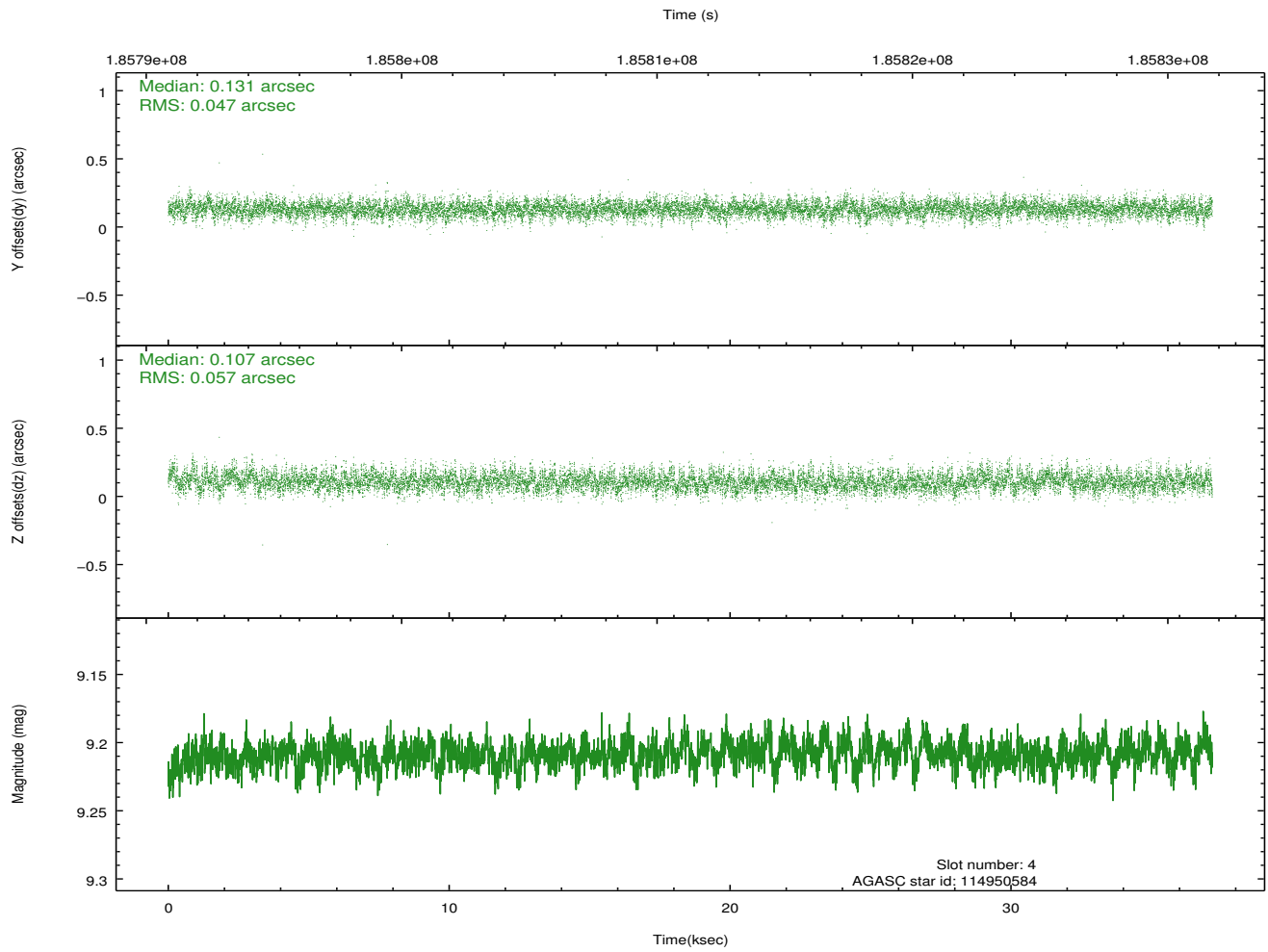
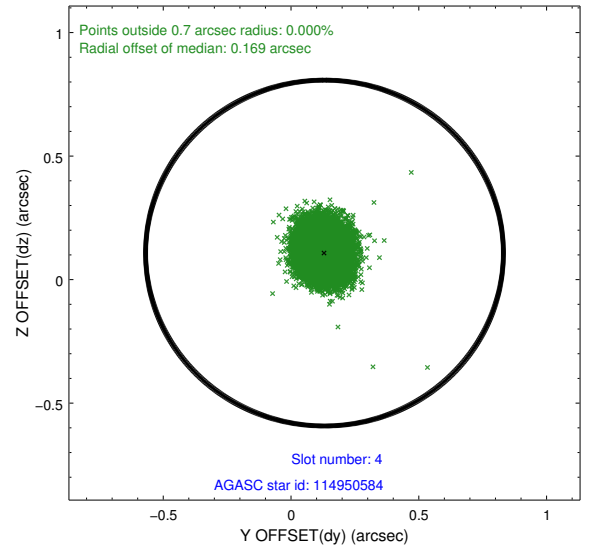
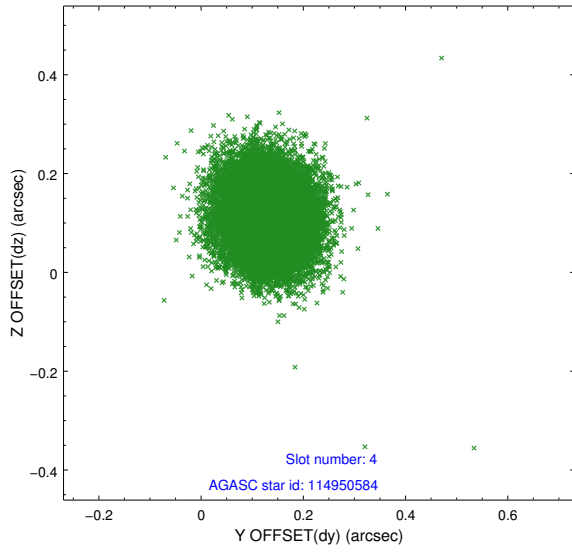
slot	status	id	mag	n_pts	med_dy	med_dz	dr1	dr2	ra	dec	mean_y	mean_z
0	FID	ACIS-S-2	7.10	9066	-0.049	-0.018	0.009	0.018	0.000000	0.000000	-759.66	-1732.25
1	FID	ACIS-S-4	7.20	9066	0.068	0.029	0.012	0.022	0.000000	0.000000	2153.70	176.29
2	FID	ACIS-S-5	7.23	9066	-0.051	-0.002	0.009	0.015	0.000000	0.000000	-1812.49	169.91
3	GUIDE	114950168	7.85	18128	0.013	-0.165	0.058	0.091	187.143398	12.117441	-2017.77	755.62
4	GUIDE	114950584	9.21	18123	0.131	0.107	0.077	0.127	187.487323	11.827248	-2225.34	-829.97
5	GUIDE	114952824	8.57	18128	-0.161	0.076	0.057	0.093	187.703904	12.486727	176.17	-160.16
6	GUIDE	114954440	9.19	18124	0.167	-0.185	0.085	0.141	186.915066	12.219118	-2152.10	1627.99
7	GUIDE	114955056	8.33	18128	-0.151	0.169	0.067	0.112	187.914001	12.127854	-494.86	-1488.46

2.4 Star Slots

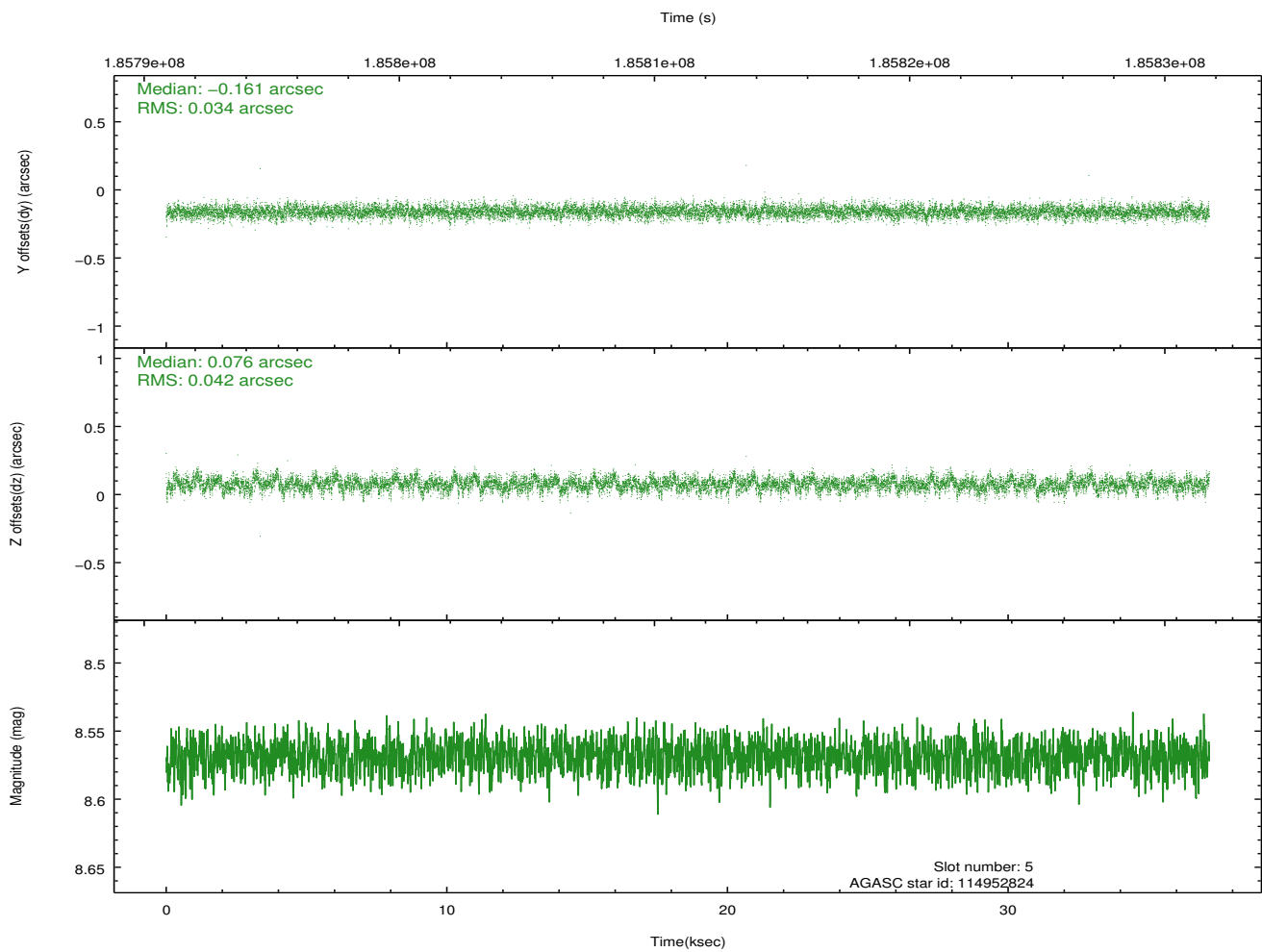
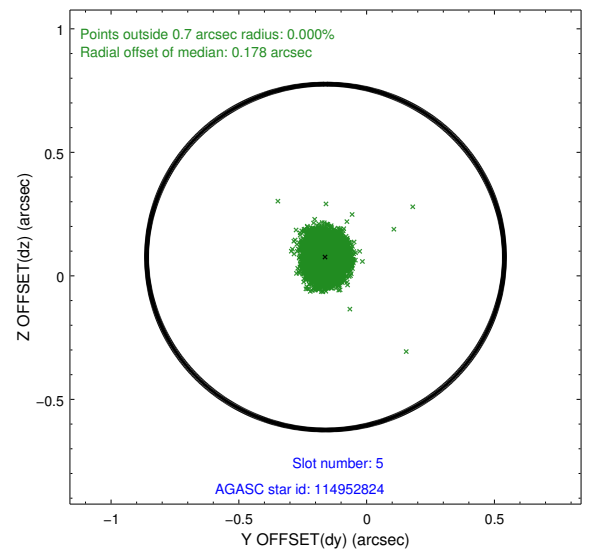
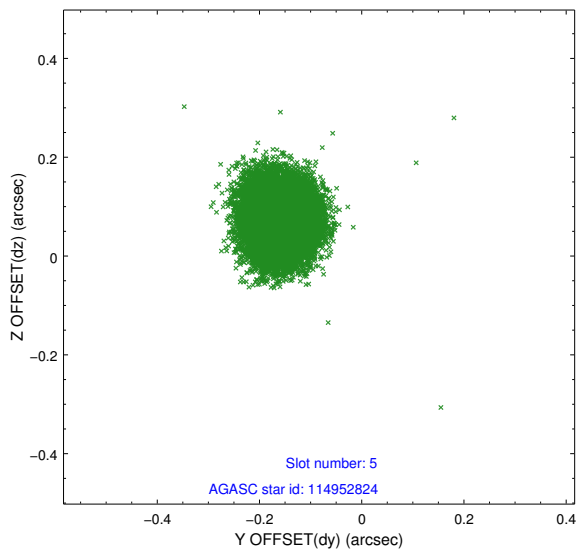
2.4.1 Slot 3



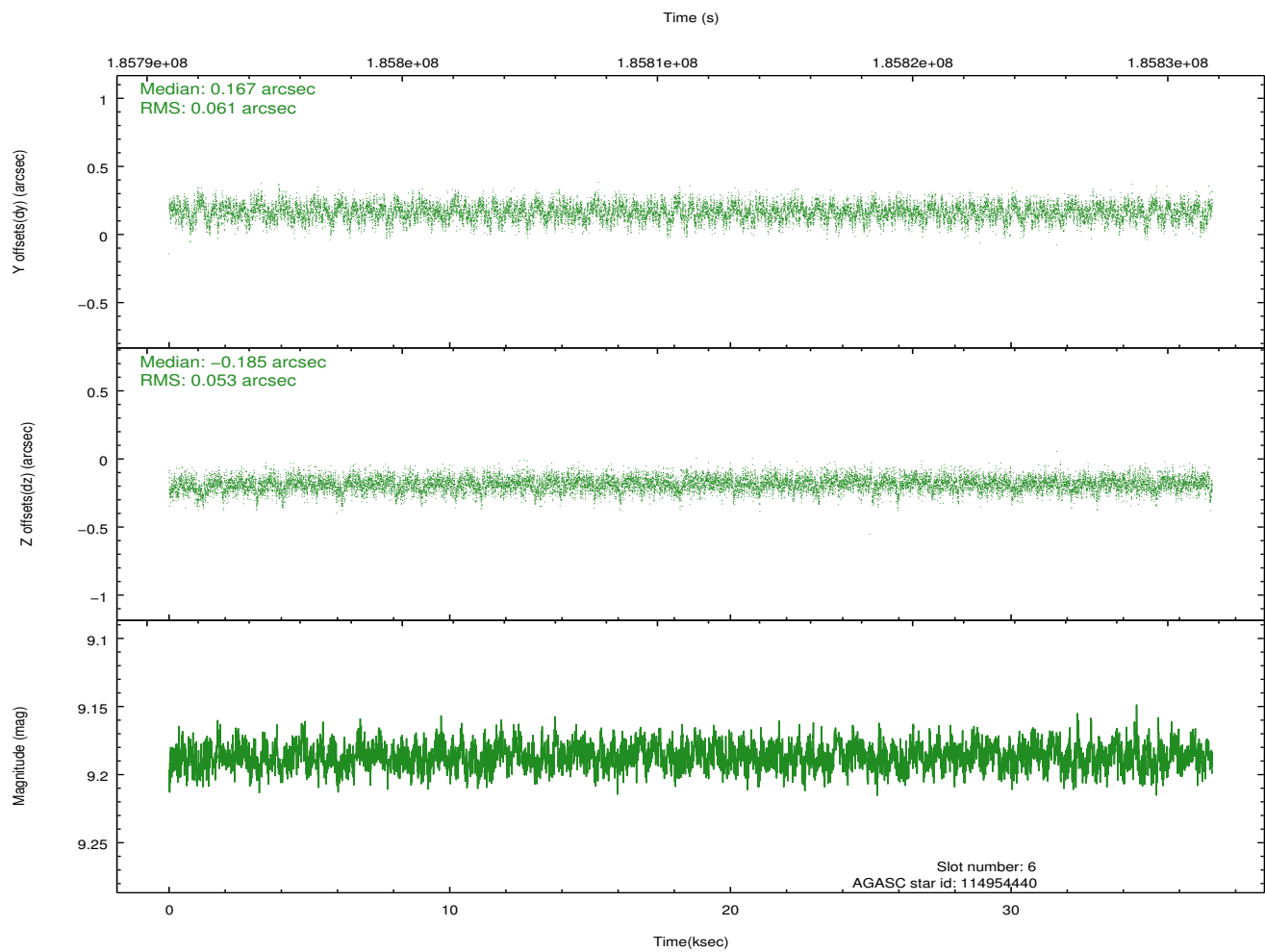
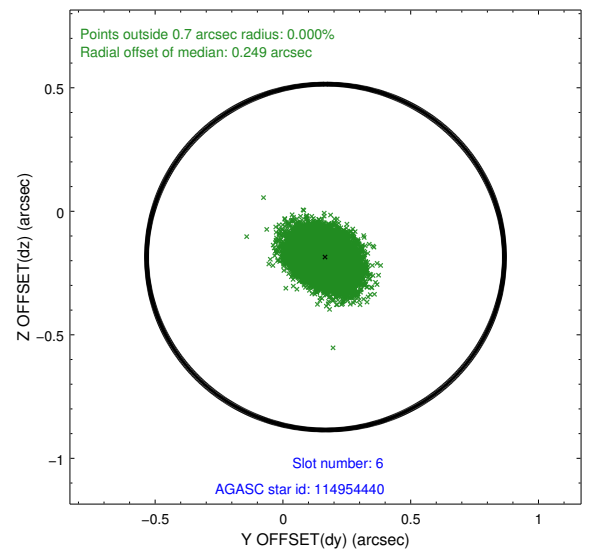
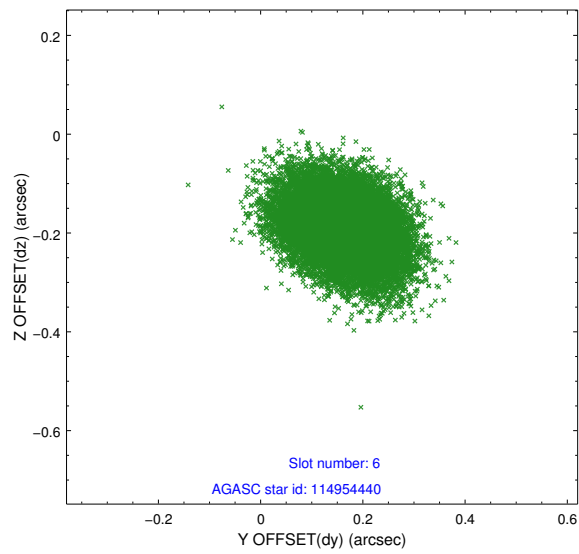
2.4.2 Slot 4



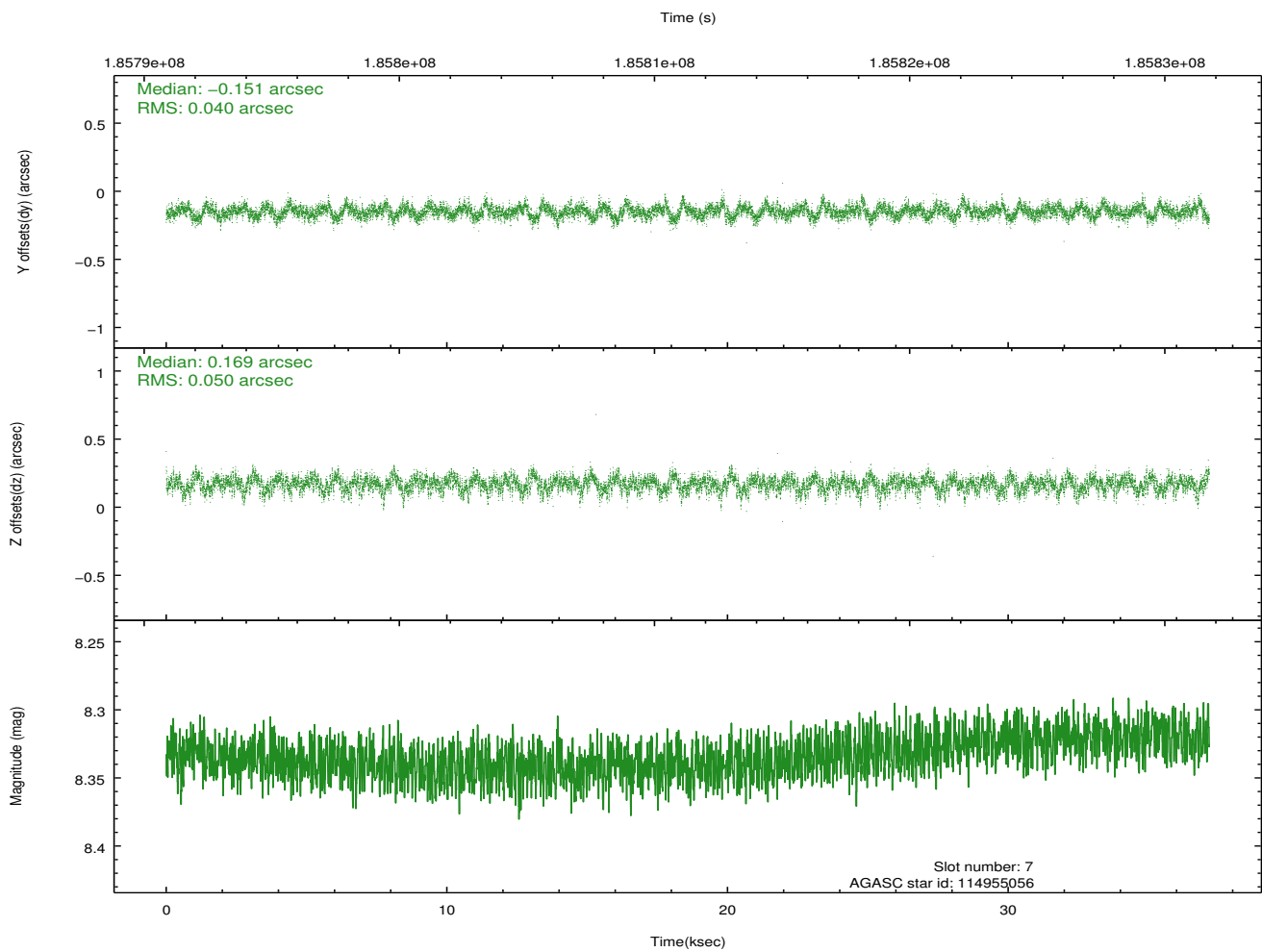
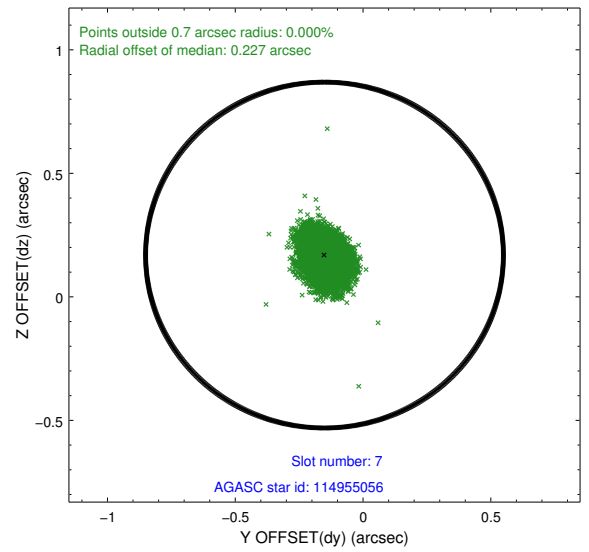
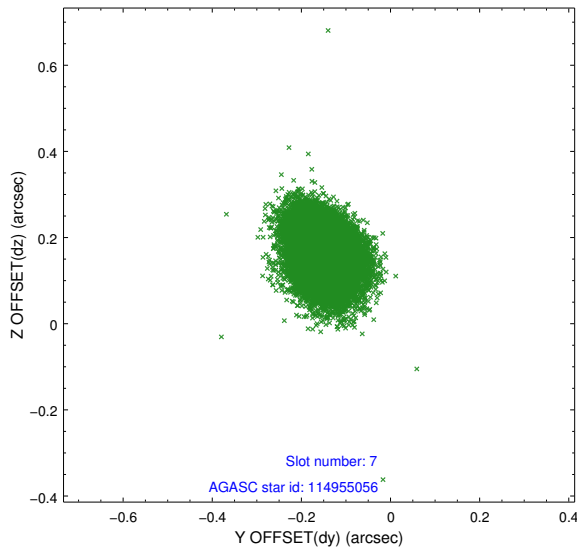
2.4.3 Slot 5



2.4.4 Slot 6

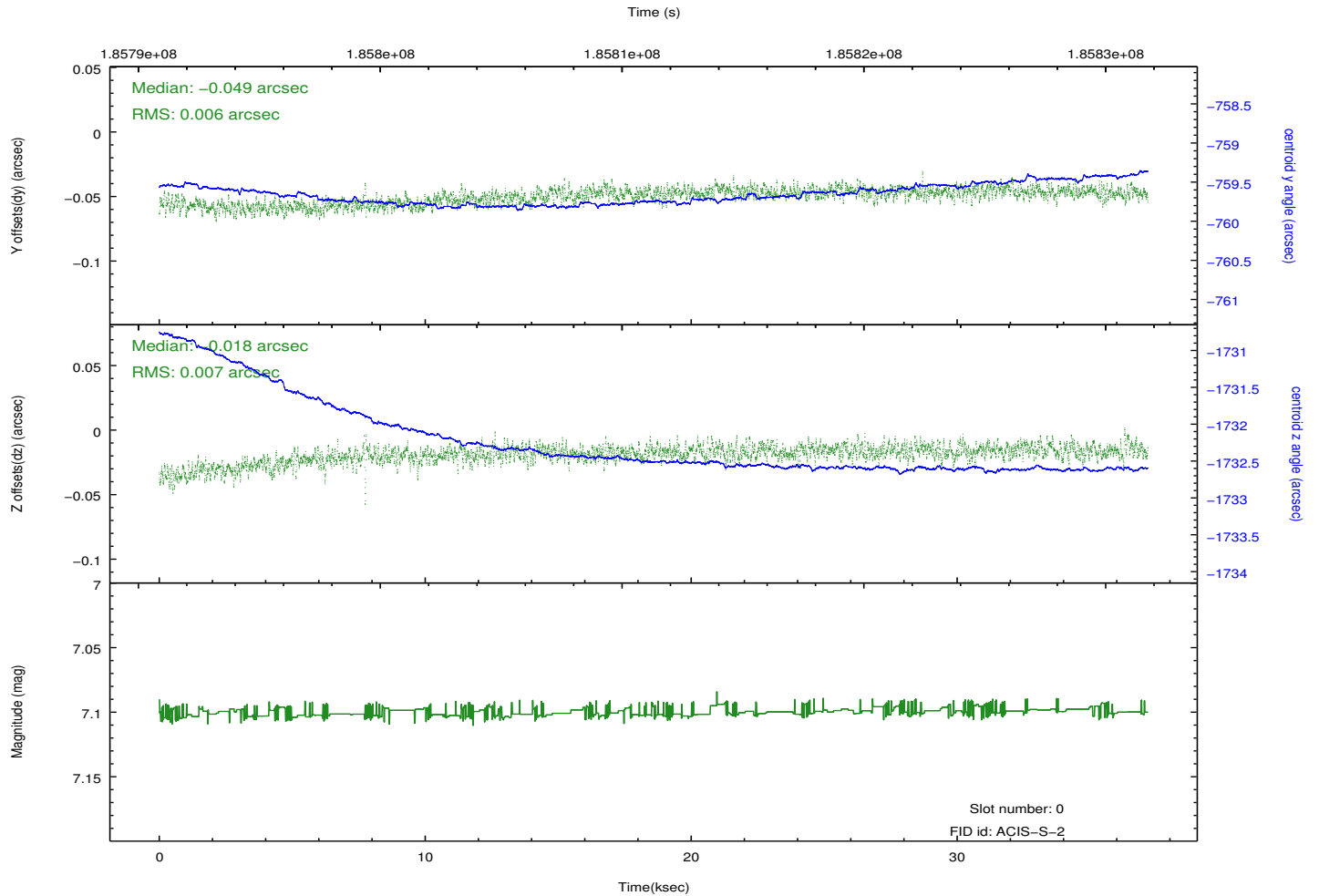
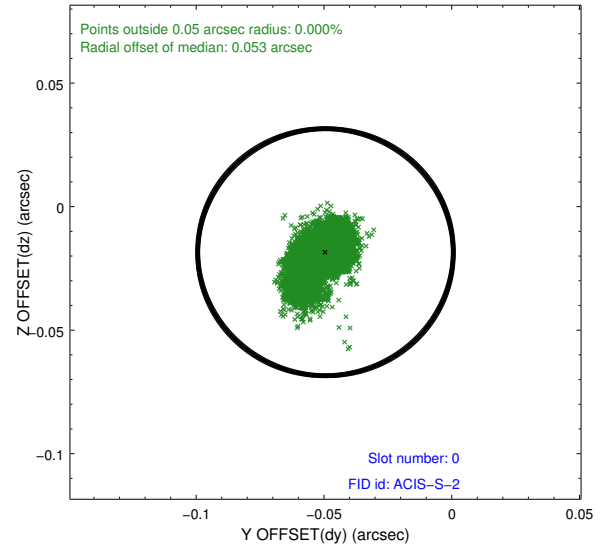
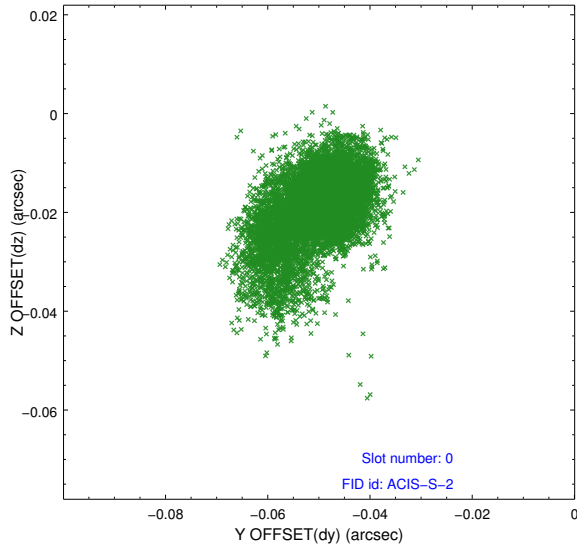


2.4.5 Slot 7

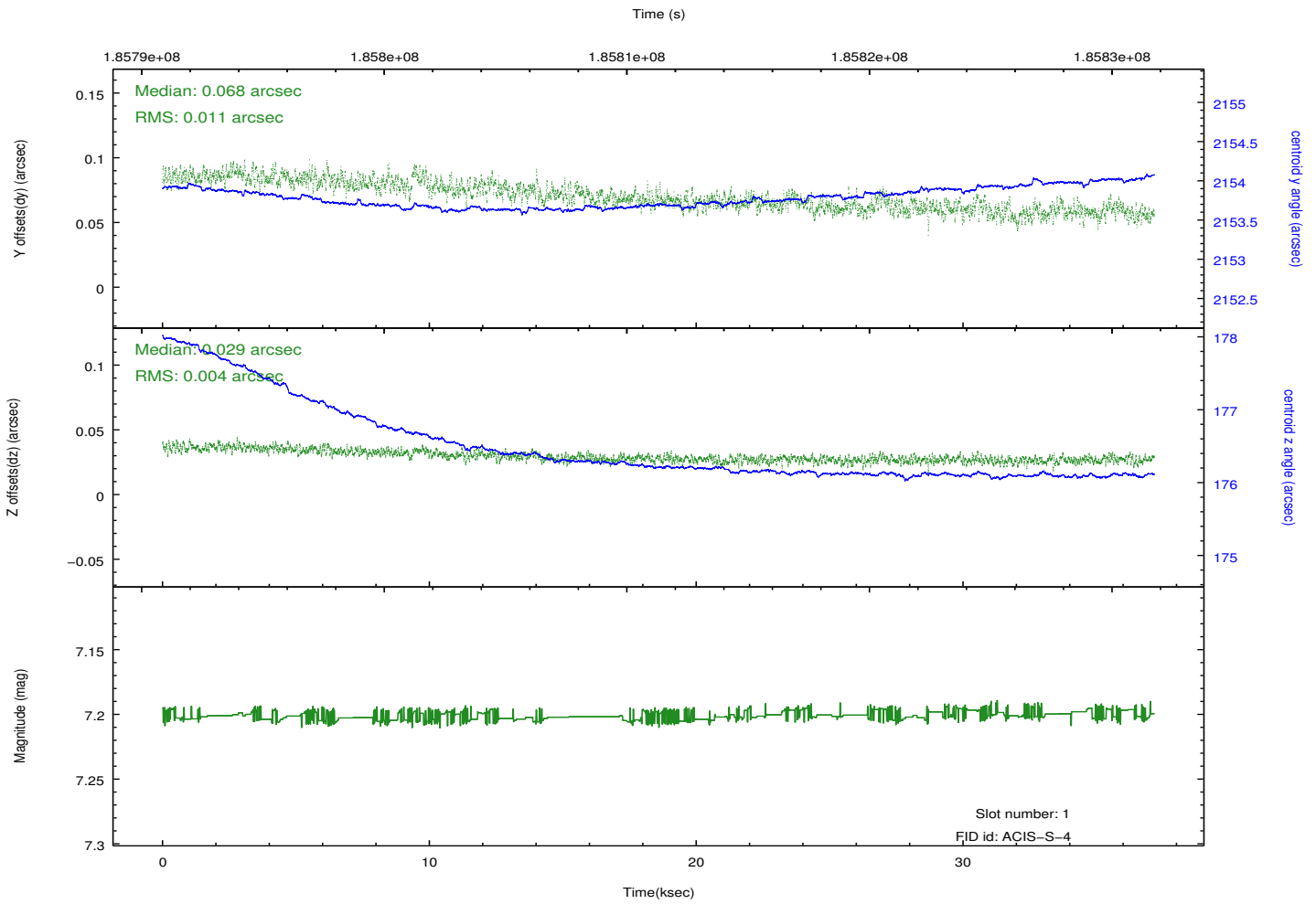
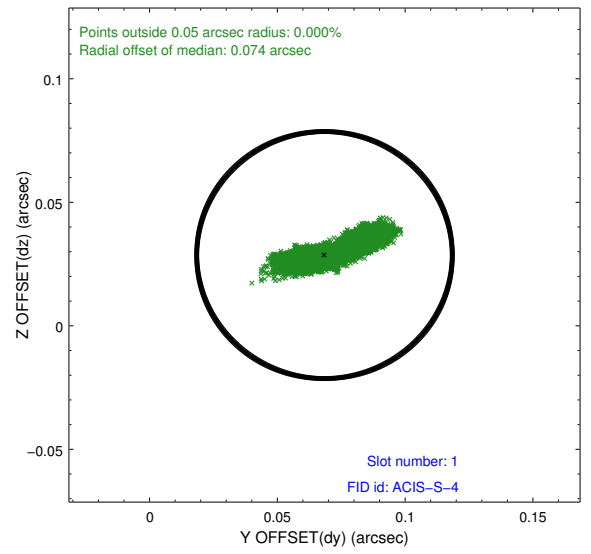
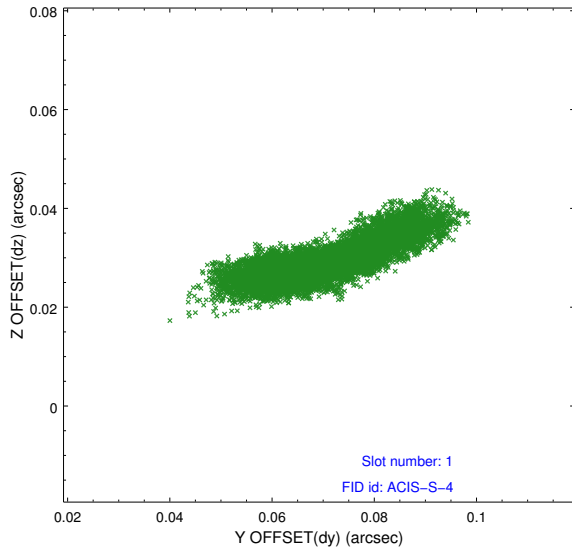


2.5 FID Slots

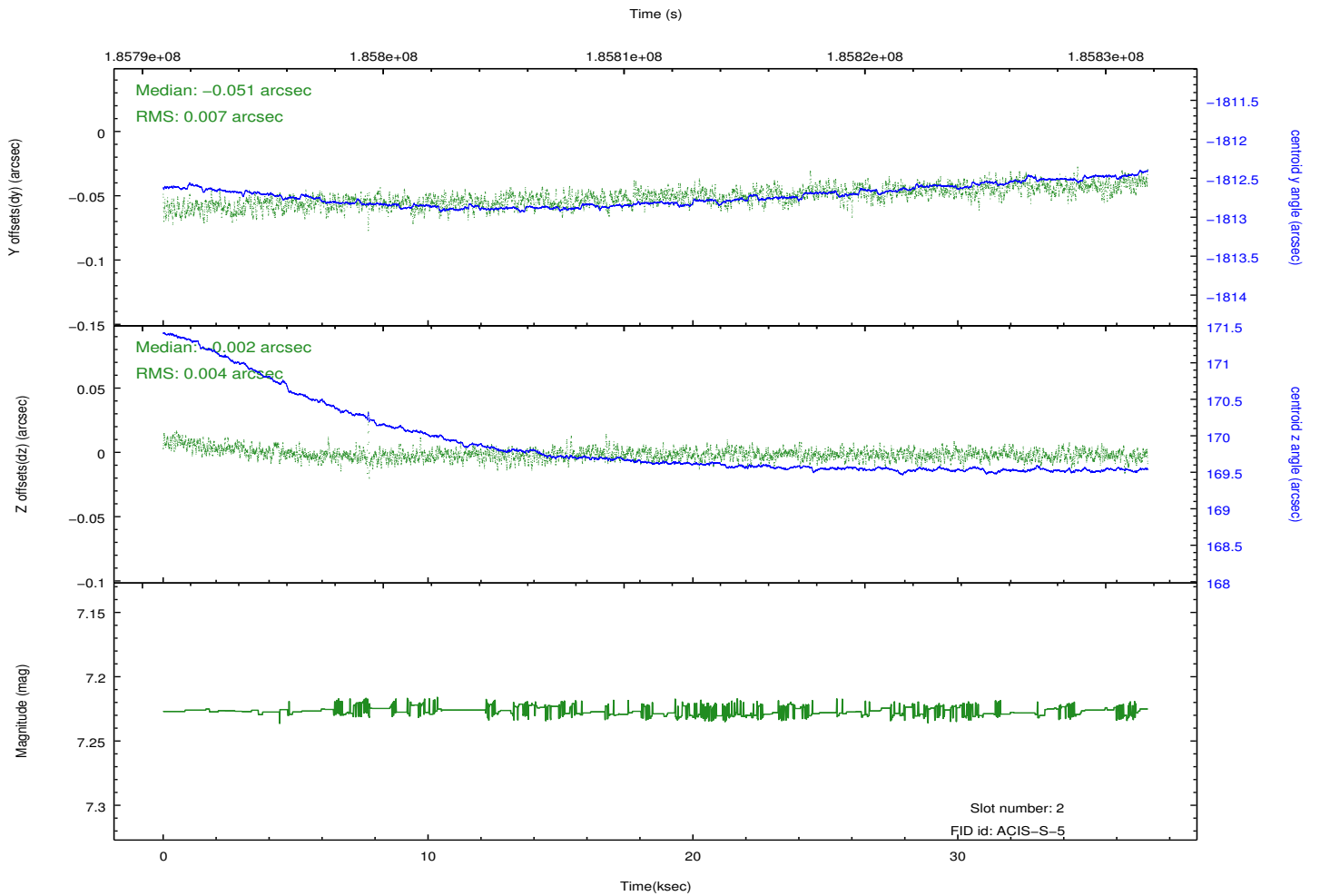
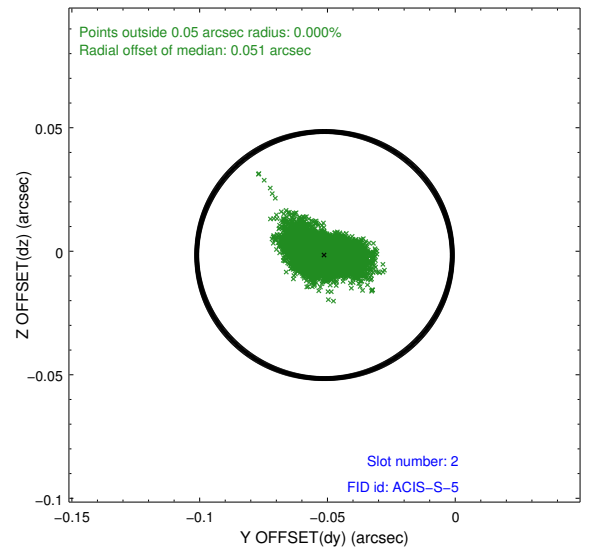
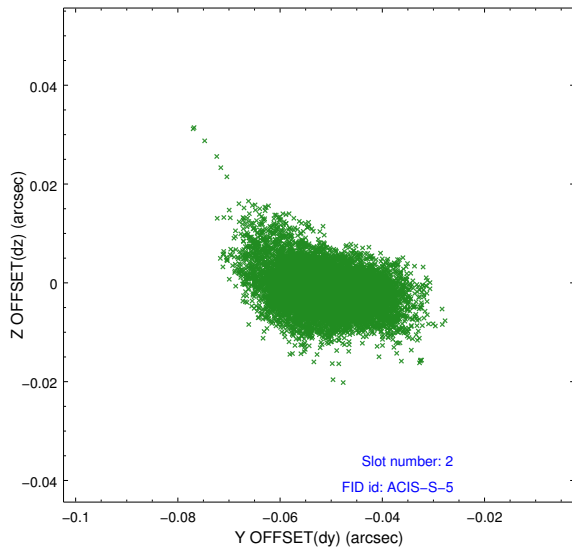
2.5.1 Slot 0



2.5.2 Slot 1



2.5.3 Slot 2



A Summary

A.1 Status

V&V Scientist	Beth Sundheim
V&V Date (YYYY-MM-DD)	2012.11.28
V&V Edition	1
V&V Disposition and Status	OK
V&V Charge Time	37.167

A.2 Comments