

V&V Reference Report

L2 ASCDS Version : 8.4.5

Observation 4057 - L2 Version 3
Chandra X-Ray Center

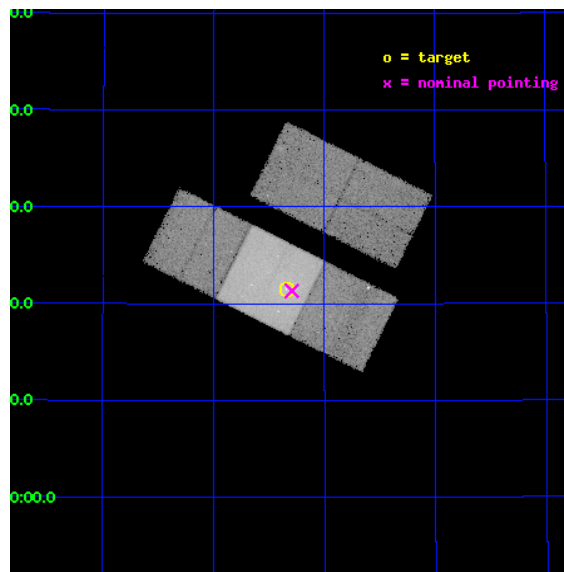
L2 Processing Date : Nov 4 2012

Contents

1	Front	2
2	OBI	3
2.1	OBI	3
2.1.1	Images	3
2.1.2	Bias	3
2.1.3	Parameters	4
2.1.4	Events	4
2.2	Compared Parameters	5
2.3	Aspect	6
2.4	Star Slots	9
2.4.1	Slot 3	9
2.4.2	Slot 4	10
2.4.3	Slot 5	11
2.4.4	Slot 6	12
2.4.5	Slot 7	13
2.5	FID Slots	14
2.5.1	Slot 0	14
2.5.2	Slot 1	15
2.5.3	Slot 2	16
A	Summary	17
A.1	Status	17
A.2	Comments	17

1 Front

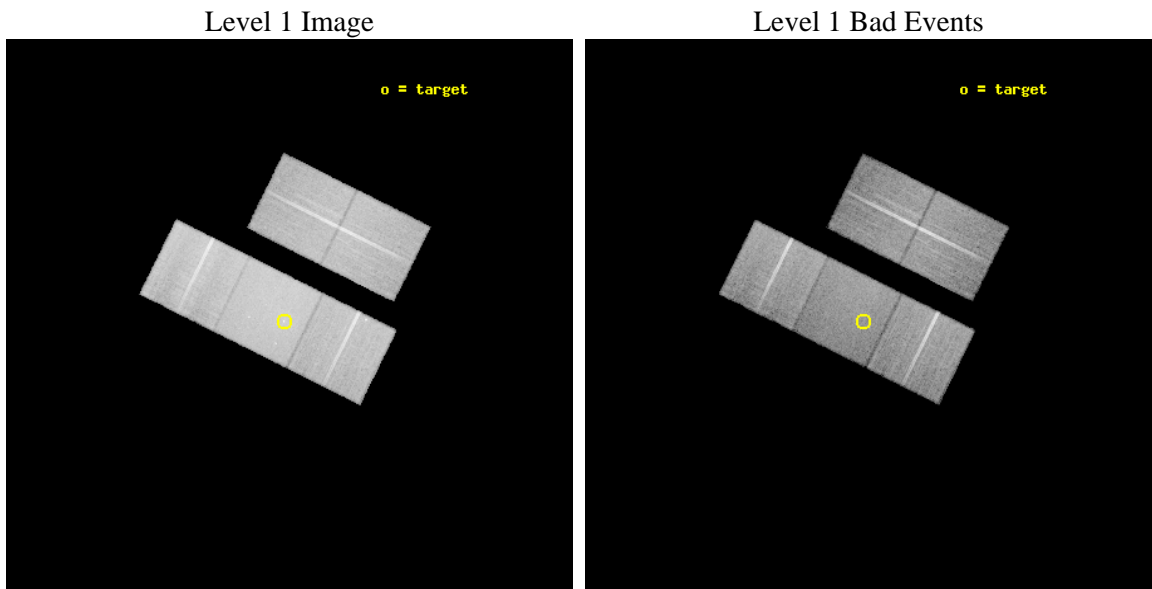
seq_num	700736	Sequence number
obs_id	4057	Observation id
title	CHANDRA OBSERVATIONS OF A UNIFORM SAMPLE OF FRI GALAXIES	Proposal
observer	Dr. Rita Sambruna	Principal investigator
object	2229+39	Source name
dtcycle	0	
cycle	P	events from which exps? Prim/Second/Both
ra_targ	337.835417	Observer's specified target RA [deg]
dec_targ	39.358333	Observer's specified target Dec [deg]
ra_nom	337.82338942037	Nominal RA [deg]
dec_nom	39.355608332799	Nominal Dec [deg]
roll_nom	206.43410763586	Nominal Roll [deg]
revision	3	Processing version of data
ontime	29561.599943131	Sum of GTIs [s]
livetime	29175.355876941	Livetime [s]
ontime2	29561.599943131	Sum of GTIs [s]
ontime3	29558.458943009	Sum of GTIs [s]
ontime6	29561.599943131	Sum of GTIs [s]
ontime7	29561.599943131	Sum of GTIs [s]
ontime8	29558.459052533	Sum of GTIs [s]
l2events	219148	Number of level 2 events



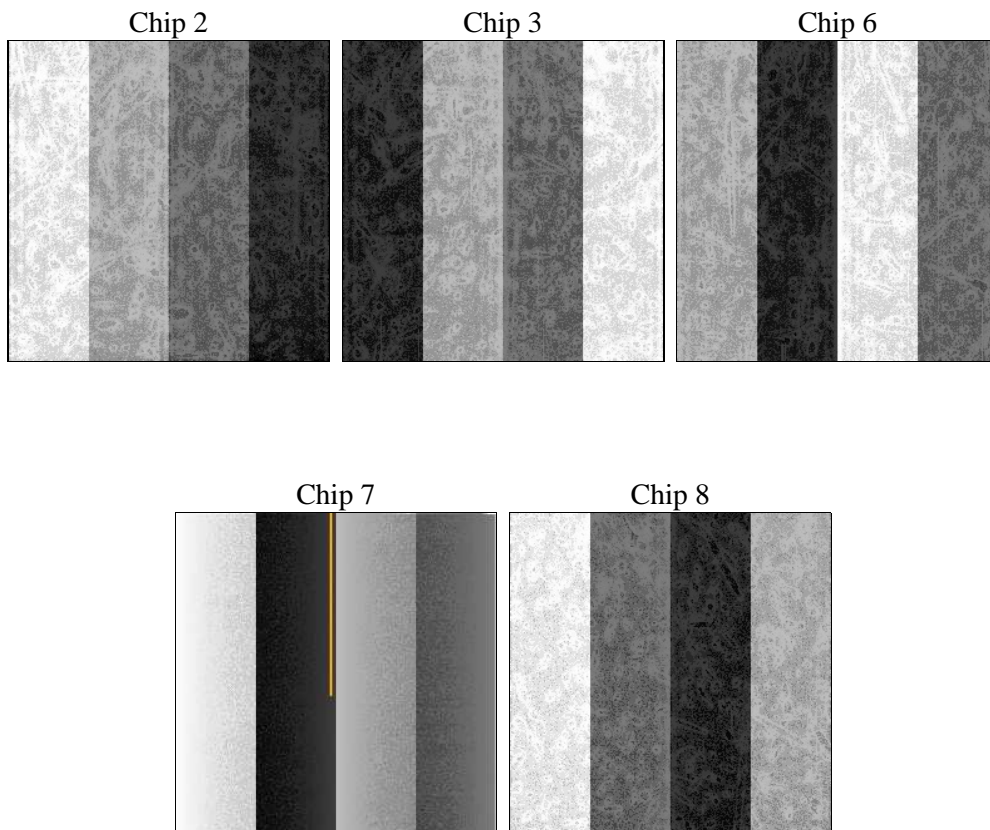
2 OBI

2.1 OBI

2.1.1 Images



2.1.2 Bias



2.1.3 Parameters

obi_num	0	Obi number	sched_exp_time	29460.000000	[s] Scheduled observation exposure time
ascdsver	8.4.5	Processing system revision	ontime	29561.599943131	Sum of GTIs [s]
caldbver	4.5.2	 	ontime2	29561.599943131	Sum of GTIs [s]
date	2012-11-04T11:28:45	Date and time of file creation	ontime3	29558.458943009	Sum of GTIs [s]
revision	3	Processing version of data	ontime6	29561.599943131	Sum of GTIs [s]
			ontime7	29561.599943131	Sum of GTIs [s]
			ontime8	29558.459052533	Sum of GTIs [s]
			l1events	1111798	Number of level 1 events

2.1.4 Events

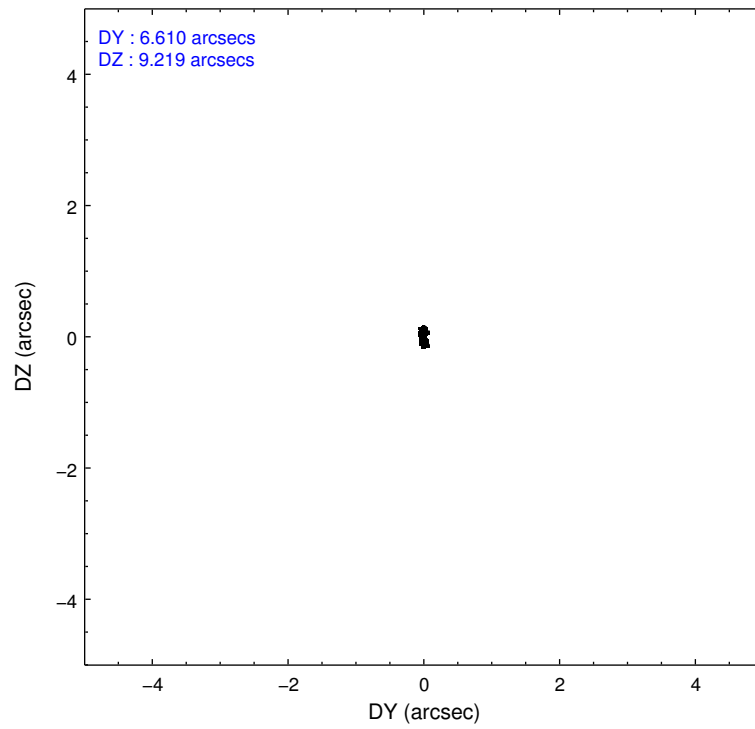
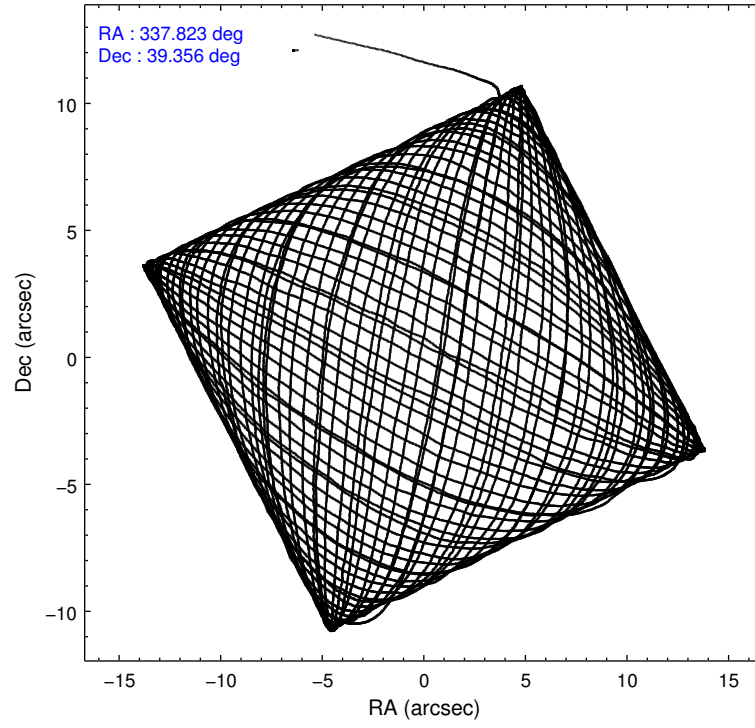
	ccd 2	ccd 3	ccd 6	ccd 7	ccd 8
level 1 events	193021	186514	207278	273491	251494
rejected events	168798	162091	177027	147381	192928
rejected %	87%	86%	85%	53%	76%

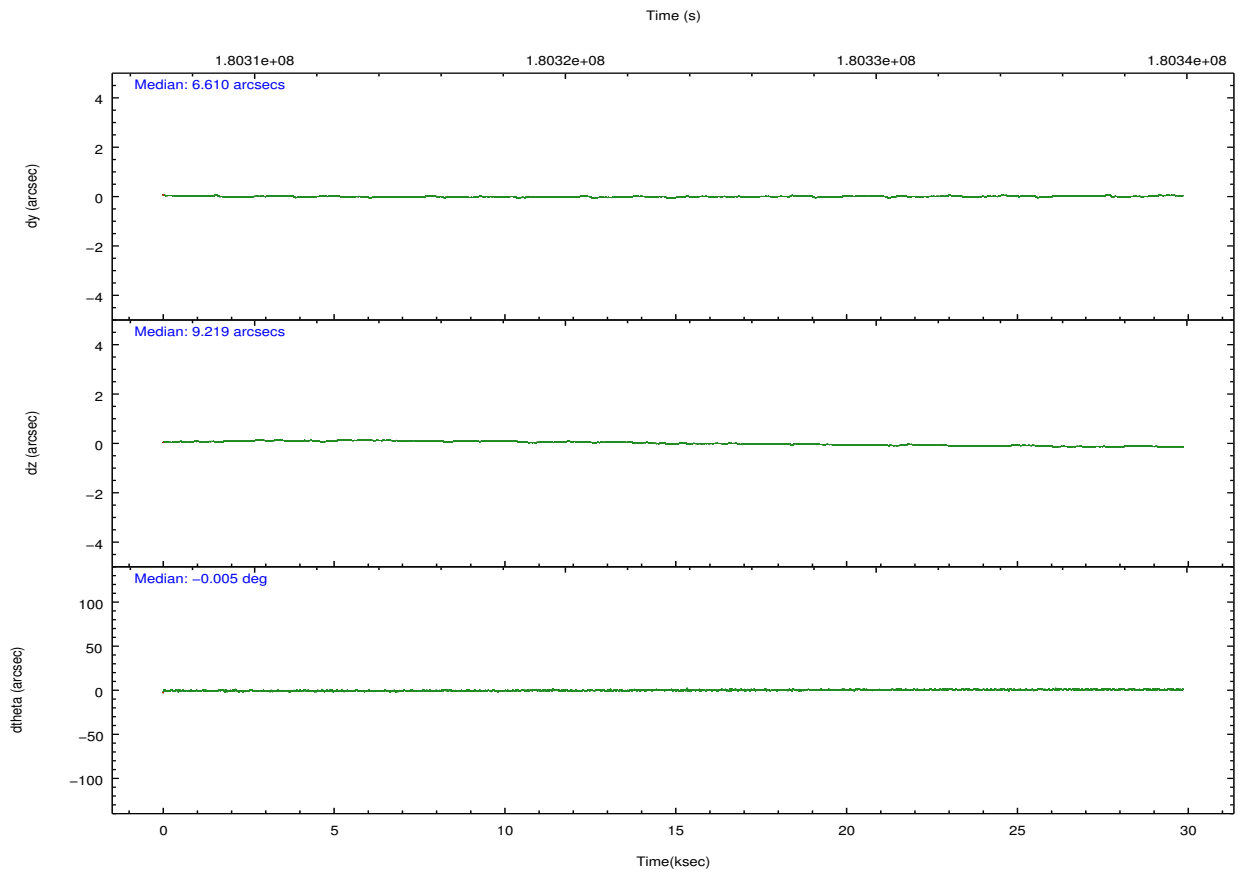
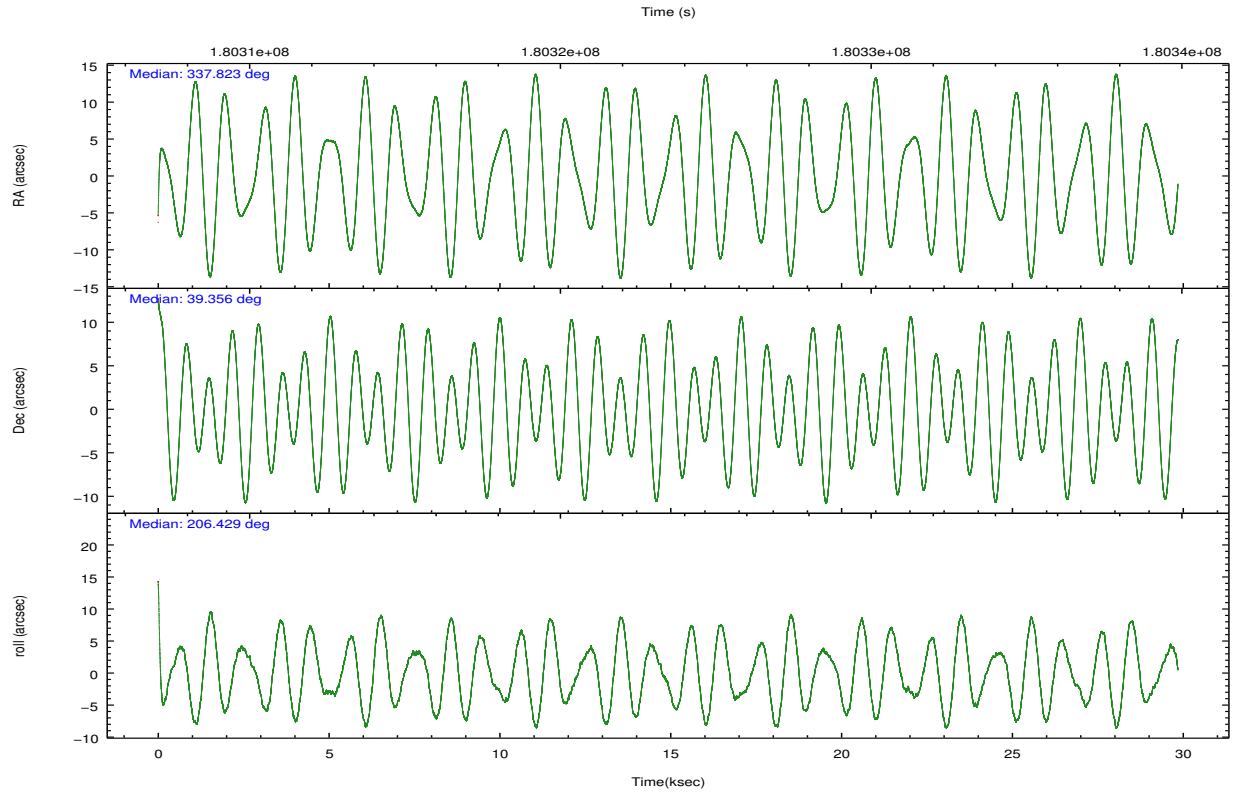
	ccd 2	ccd 3	ccd 6	ccd 7	ccd 8
grade 0 events	11284	11222	14681	14523	20937
	5%	6%	7%	5%	8%
grade 1 events	101	109	108	238	177
	0%	0%	0%	0%	0%
grade 2 events	4896	4828	6161	25503	11413
	2%	2%	2%	9%	4%
grade 3 events	2157	2211	2355	11344	6663
	1%	1%	1%	4%	2%
grade 4 events	2107	2139	2282	11117	6056
	1%	1%	1%	4%	2%
grade 5 events	6895	7931	8449	23488	11009
	3%	4%	4%	8%	4%
grade 6 events	3783	4025	4778	63636	13501
	1%	2%	2%	23%	5%
grade 7 events	161798	154049	168464	123642	181738
	83%	82%	81%	45%	72%

2.2 Compared Parameters

Parameter	Planned	Actual	Parameter	Planned	Actual
Instrument	ACIS	ACIS	Obspar format version number	7	7
Detector	ACIS-23678	ACIS-23678	Obspar file type	PREDICTED	ACTUAL
Grating	NONE	NONE	Obspar update status	NONE	UPDATED
Data mode	VFAINT	VFAINT	Number of optional ACIS chips dropped	0	0
Observation mode	POINTING	POINTING	On-chip summing requested	N	N
[deg] Pointing RA	337.842498	337.8233894203662	Subarray requested	NONE	NONE
[deg] Pointing Dec	39.378497	39.35560833279867	Alternating exposures requested	N	N
[deg] Pointing Roll	206.265359	206.4341076358598	[s] Primary exposure time	0.000000	3.1
[mm] SIM focus pos	-0.684267	-0.6828225247311905			
[mm] SIM defocus	0	0.001444936568705701			
[mm] SIM translation stage pos	-190.132523	-190.1400660498719			
[mm] SIM translation stage offset	0	0.00754346686406393			
[s] Observation start time (MET)	180308928.184000	180307857.20926			
Observation start date	2003-09-18T21:47:44	2003-09-18T21:30:57			
[s] Observation end time (MET)	180338388.184000	180339403.12311			
Observation end date	2003-09-19T05:58:44	2003-09-19T06:16:43			
Read mode	TIMED	TIMED			

2.3 Aspect





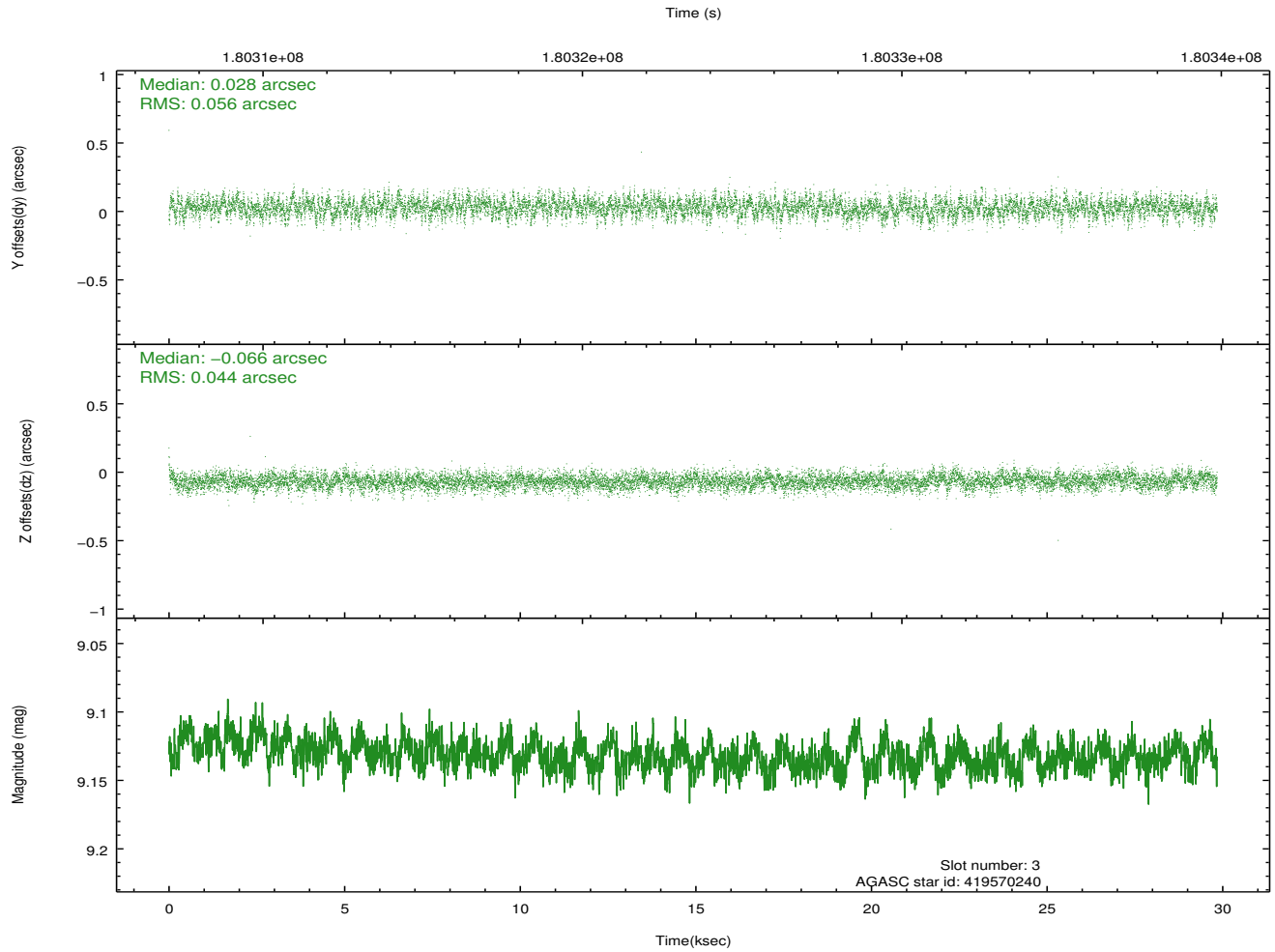
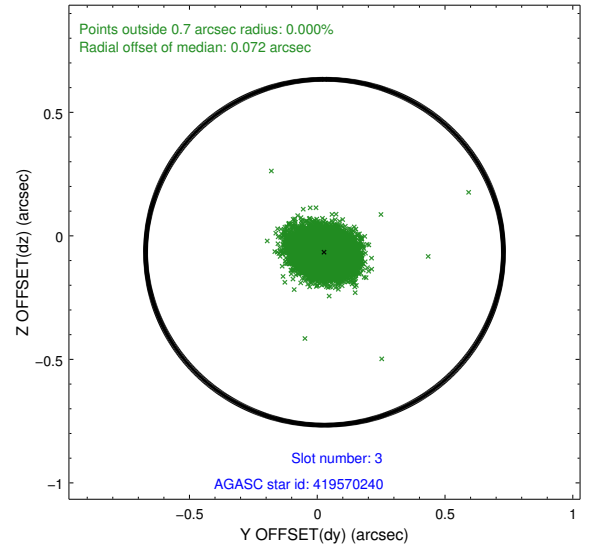
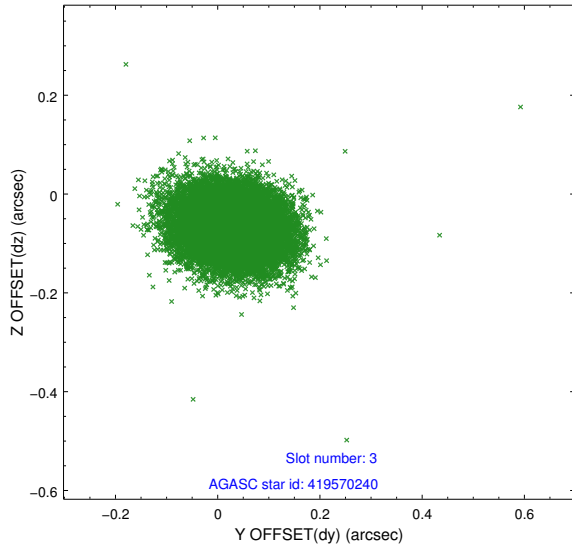
Slot Statistics

slot	status	id	mag	n_pts	med_dy	med_dz	dr1	dr2	ra	dec	mean_y	mean_z
0	FID	ACIS-S-4	7.20	7280	0.061	0.011	0.006	0.010	0.000000	0.000000	2154.06	178.23
1	FID	ACIS-S-5	7.24	7280	-0.078	0.012	0.006	0.010	0.000000	0.000000	-1812.18	171.71
2	FID	ACIS-S-6	7.35	7280	-0.012	-0.009	0.007	0.012	0.000000	0.000000	402.16	815.43
3	GUIDE	419570240	9.13	14557	0.028	-0.066	0.075	0.122	338.530340	39.335532	-1652.02	979.86
4	GUIDE	419577312	8.73	14556	-0.001	0.039	0.068	0.109	337.563930	38.684547	1807.09	1893.47
5	GUIDE	419957728	7.70	14559	-0.004	-0.032	0.063	0.114	336.771419	39.671910	2186.93	-2275.93
6	GUIDE	420094560	9.14	14558	-0.014	0.041	0.091	0.147	337.686434	40.003943	-610.16	-2209.48
7	GUIDE	420100064	8.68	14556	-0.011	0.024	0.069	0.112	338.032410	39.798939	-1140.73	-1125.26

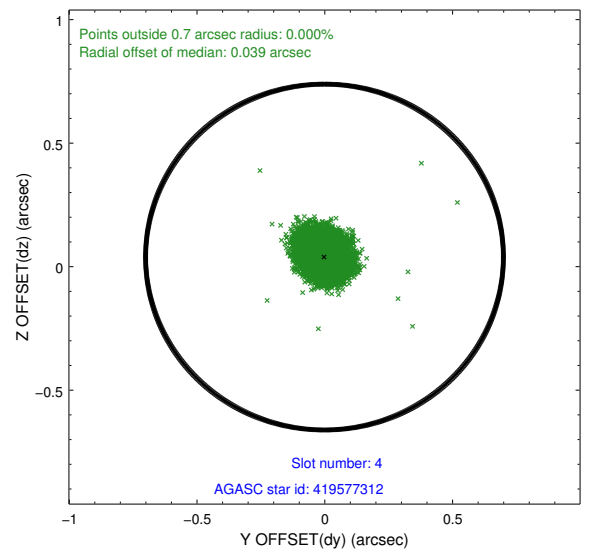
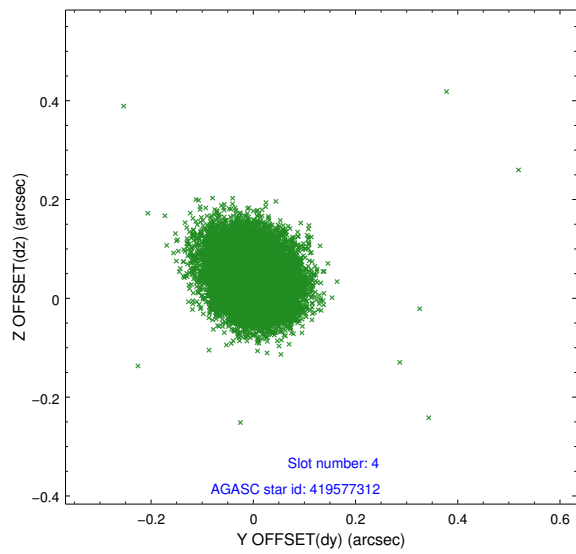
∞

2.4 Star Slots

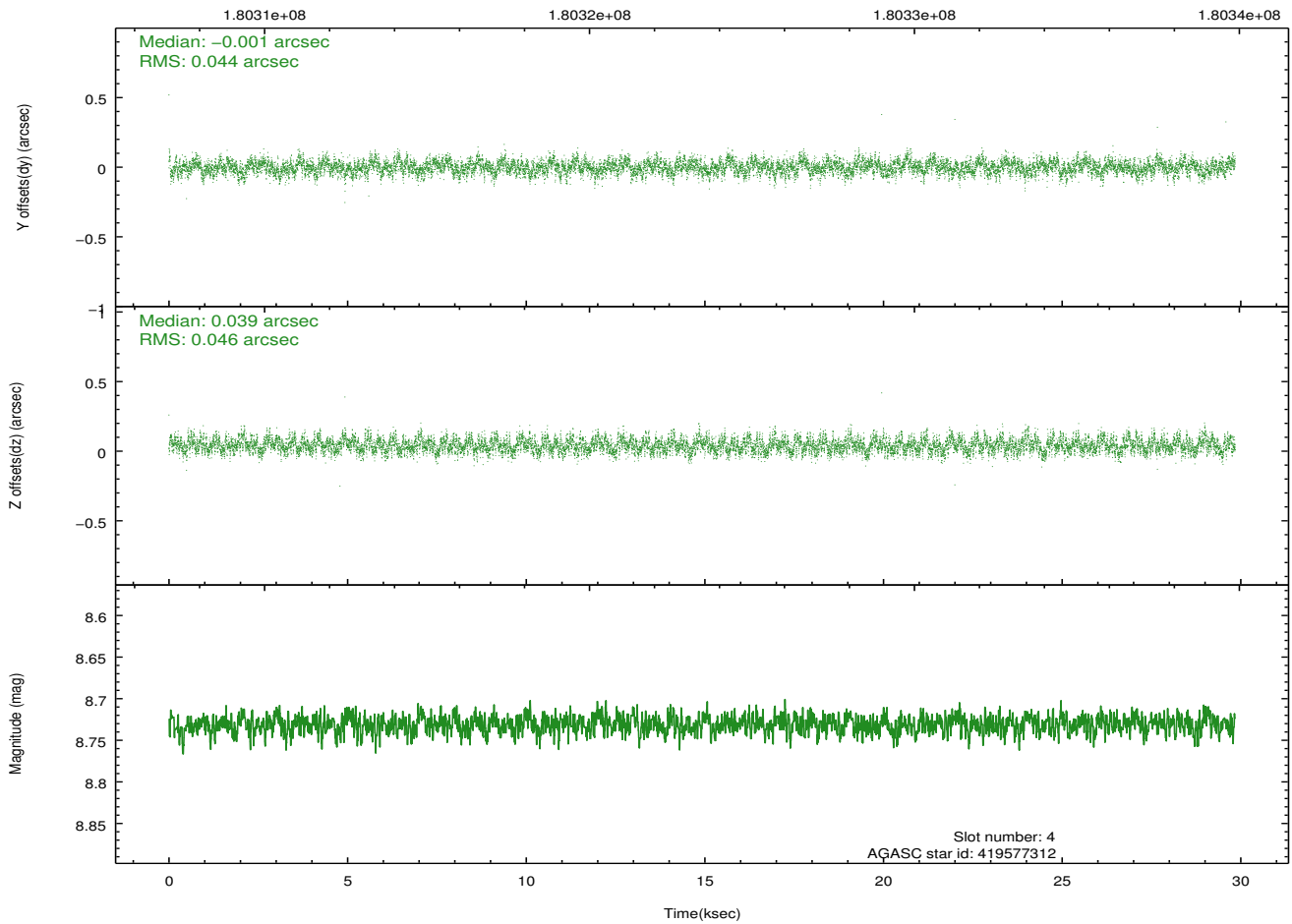
2.4.1 Slot 3



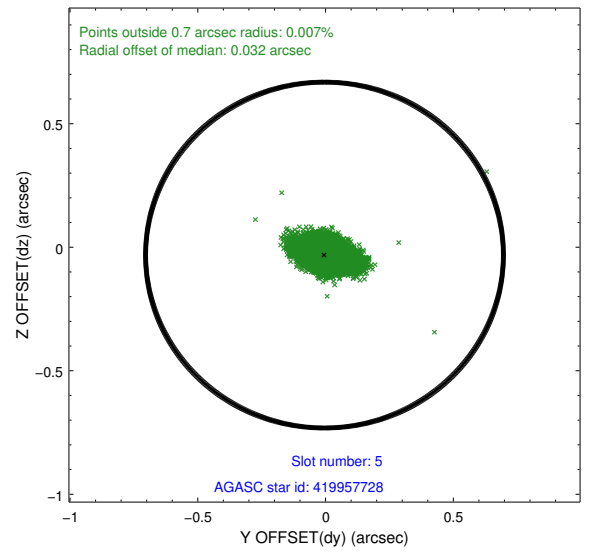
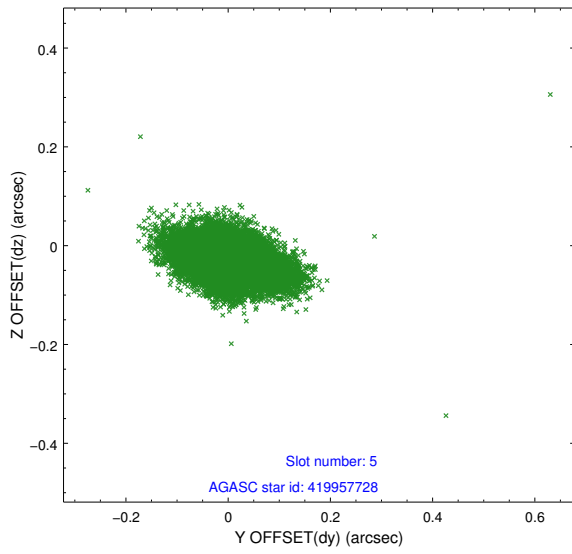
2.4.2 Slot 4



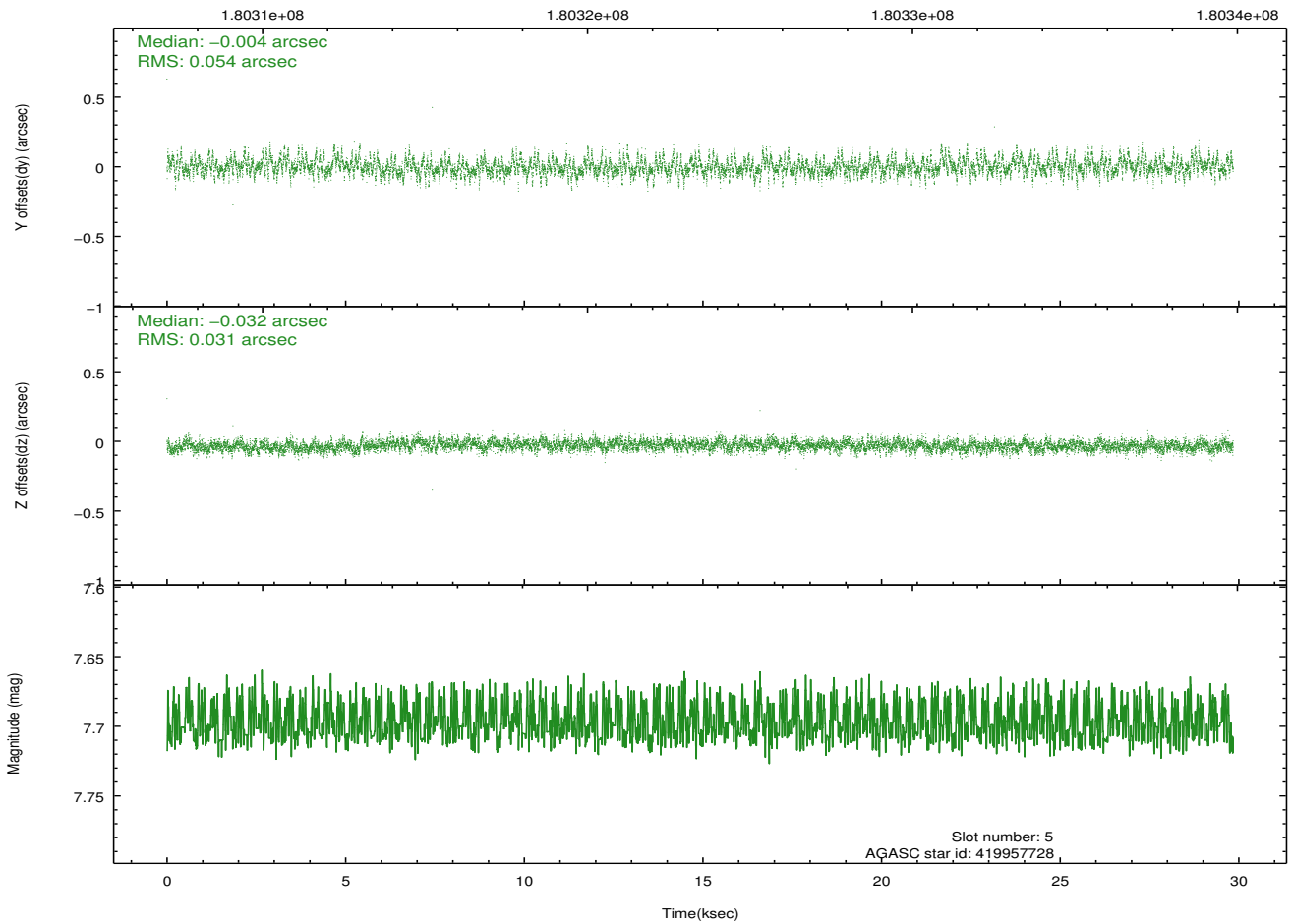
Time (s)



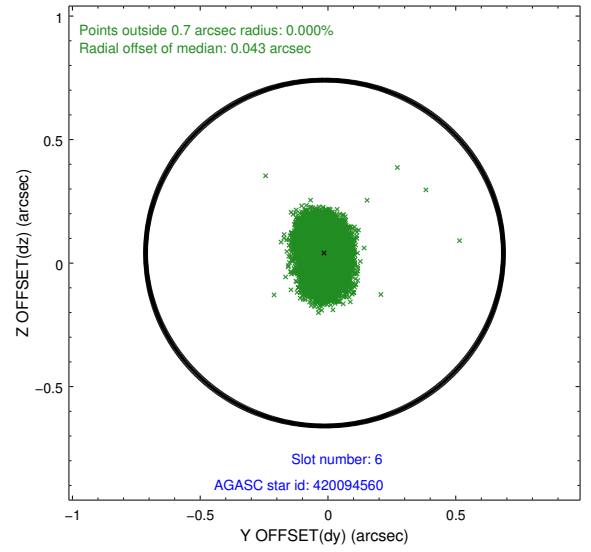
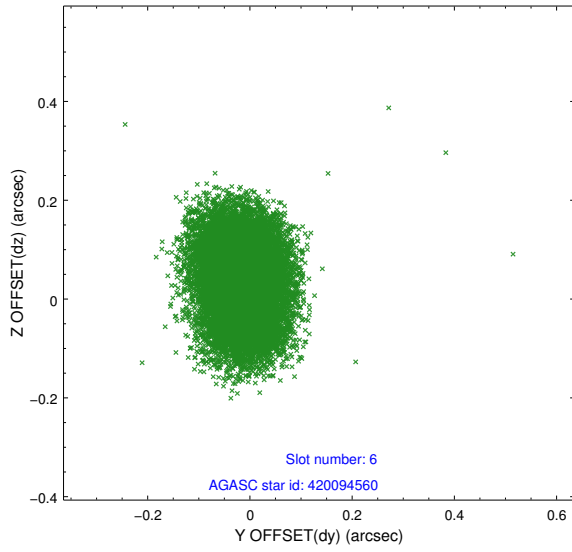
2.4.3 Slot 5



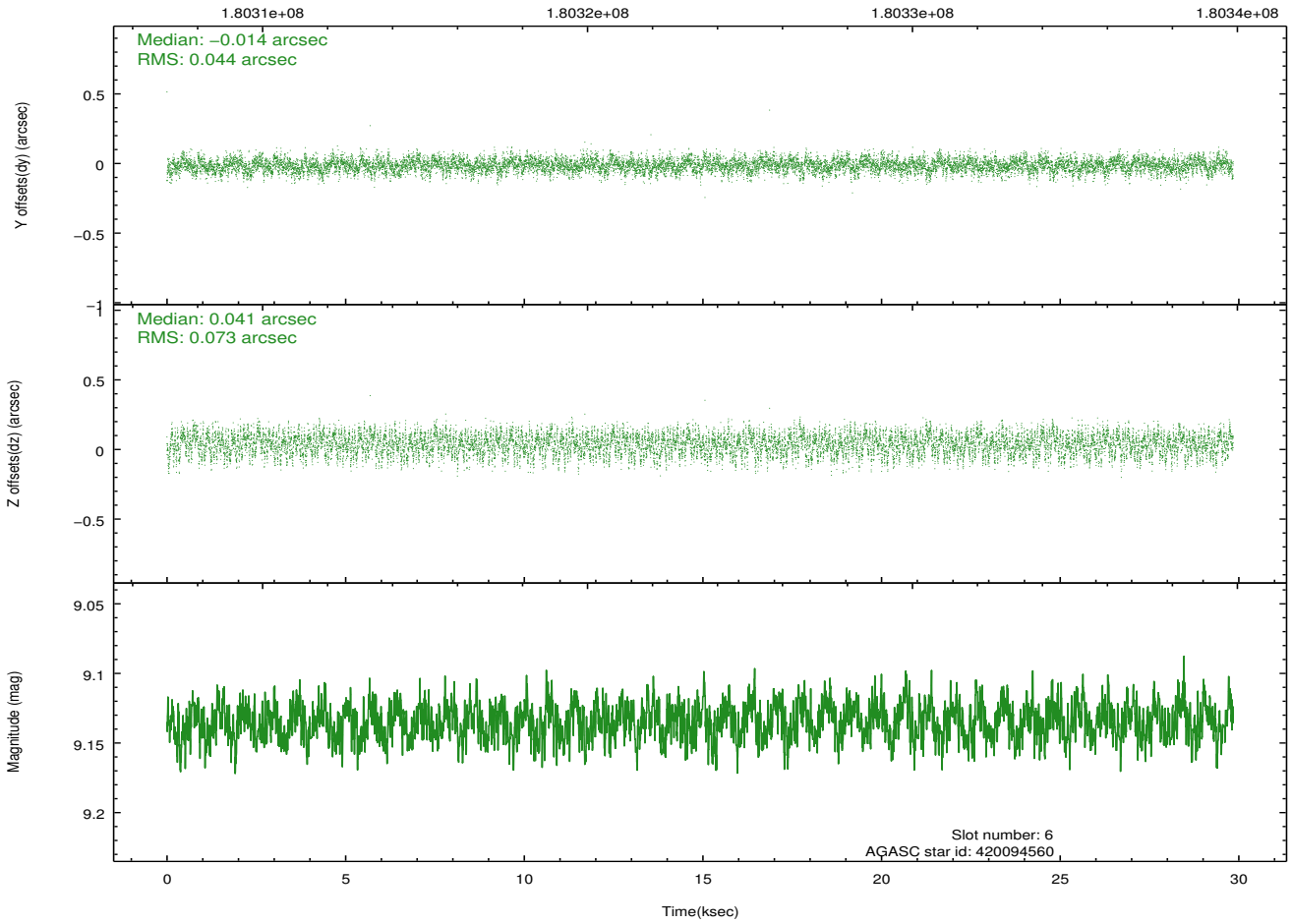
Time (s)



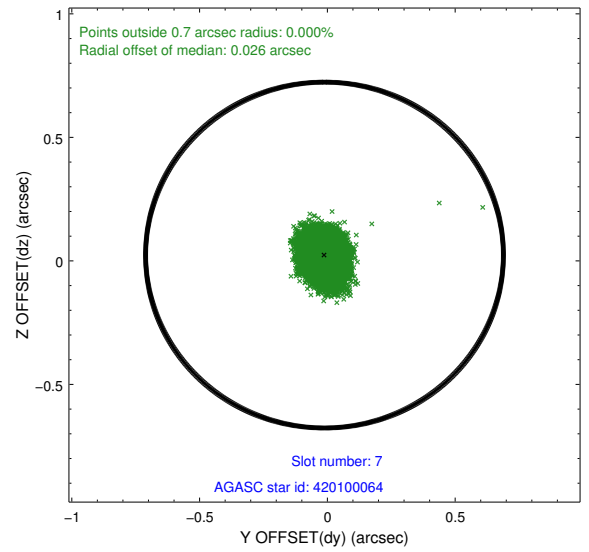
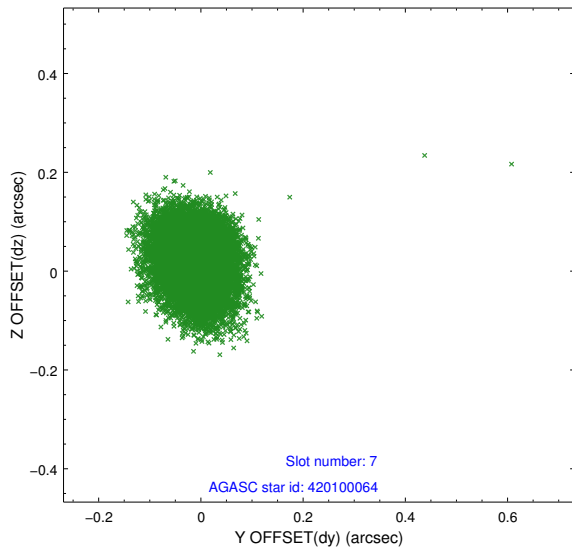
2.4.4 Slot 6



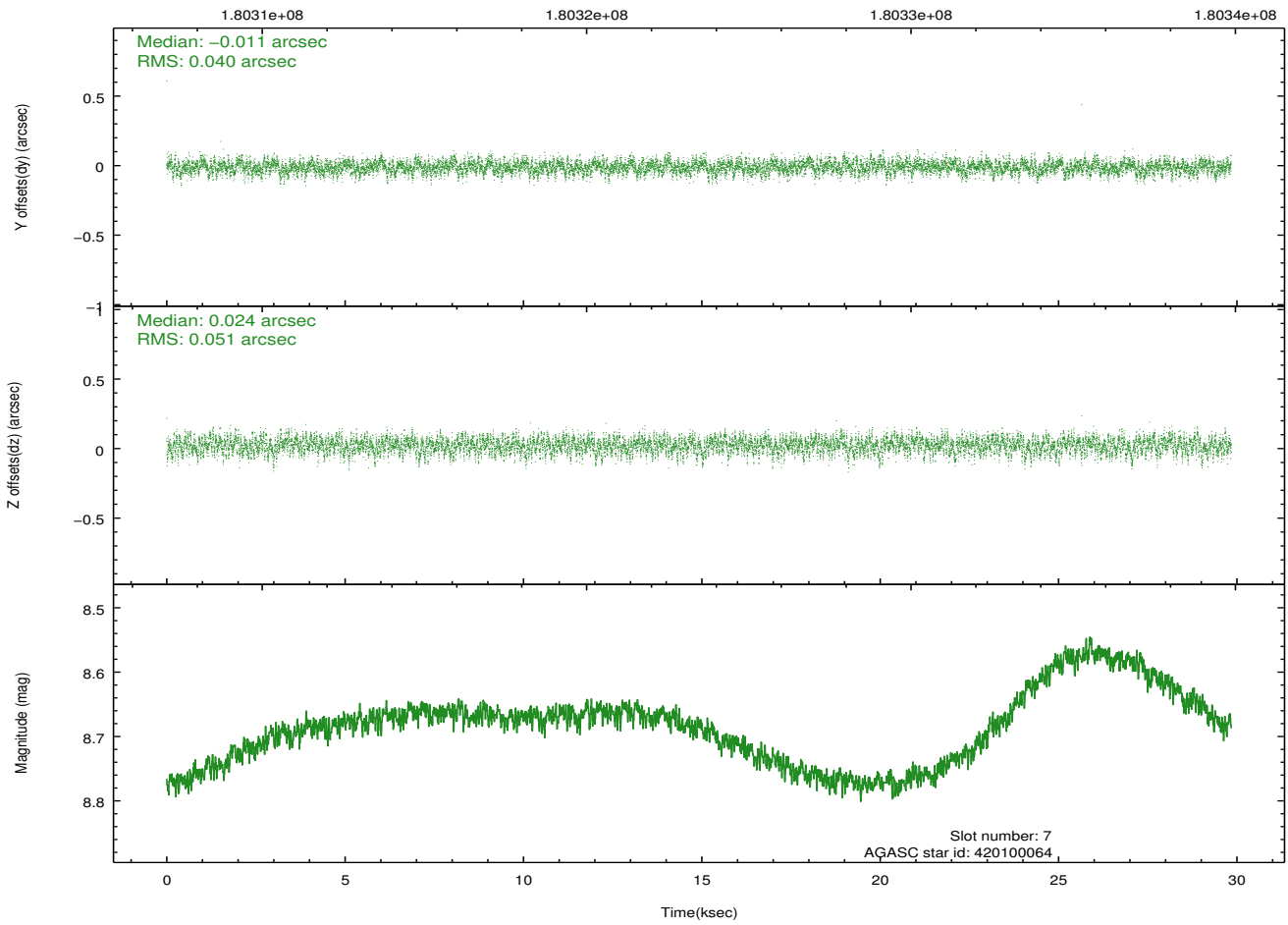
Time (s)



2.4.5 Slot 7

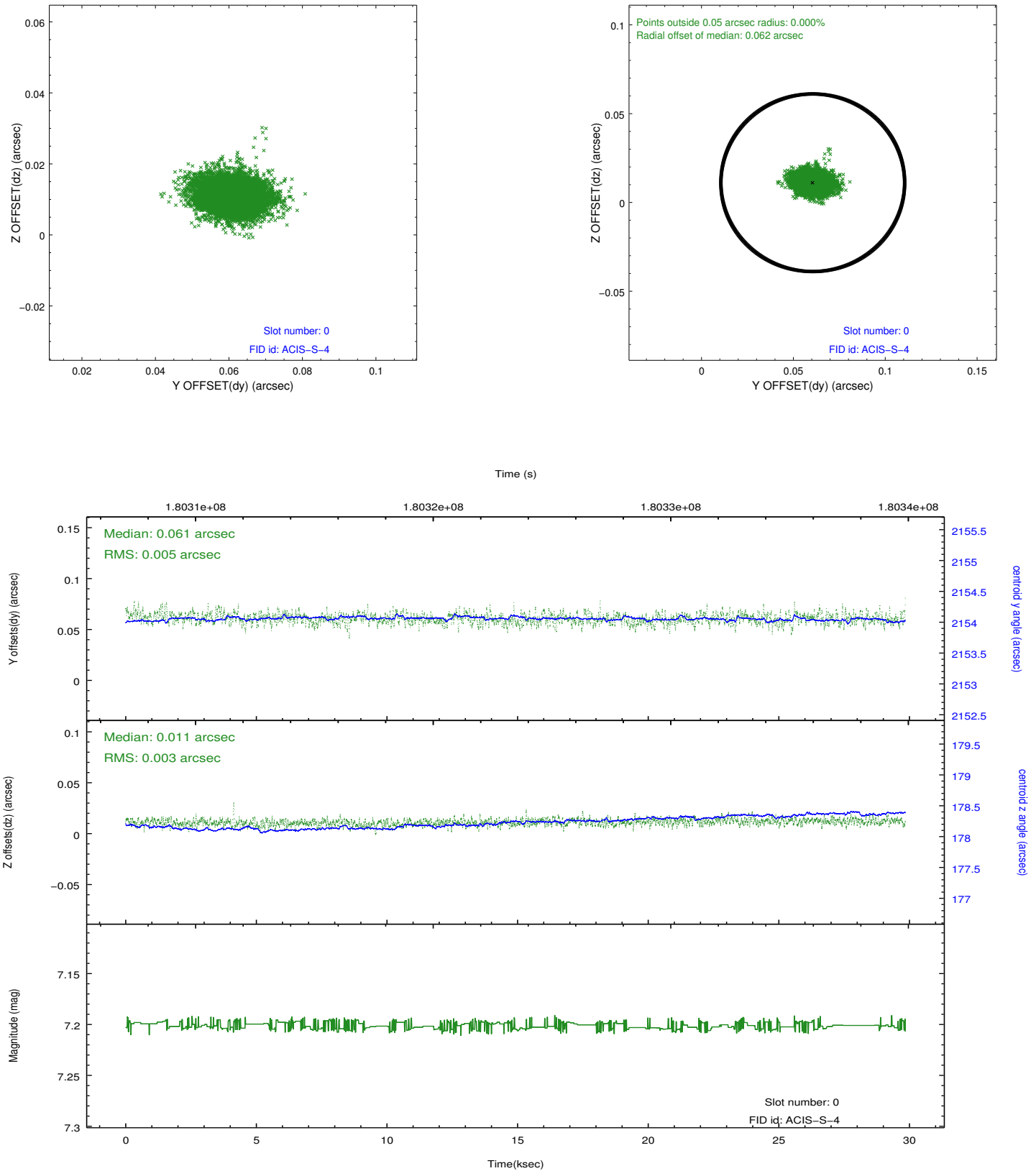


Time (s)

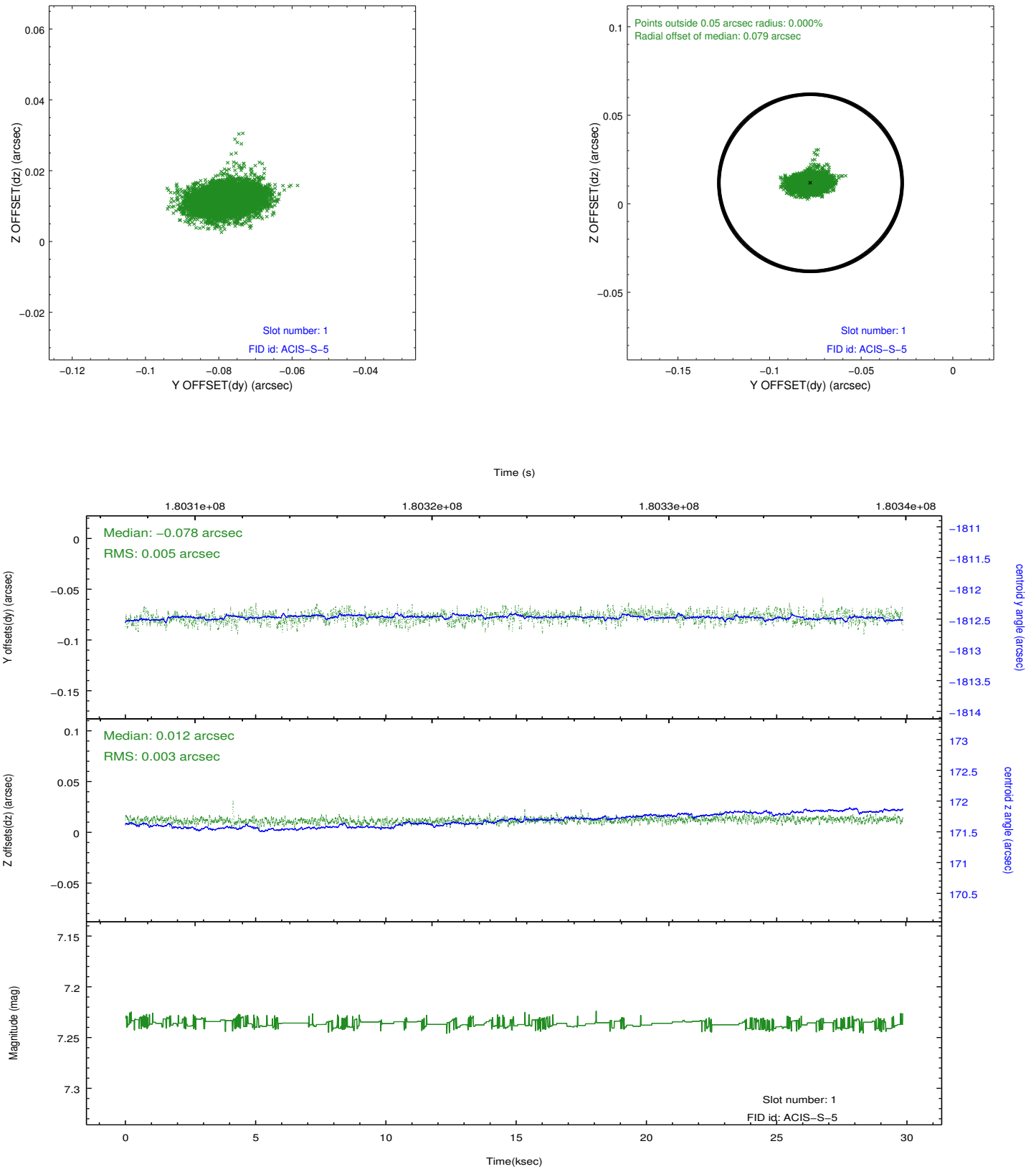


2.5 FID Slots

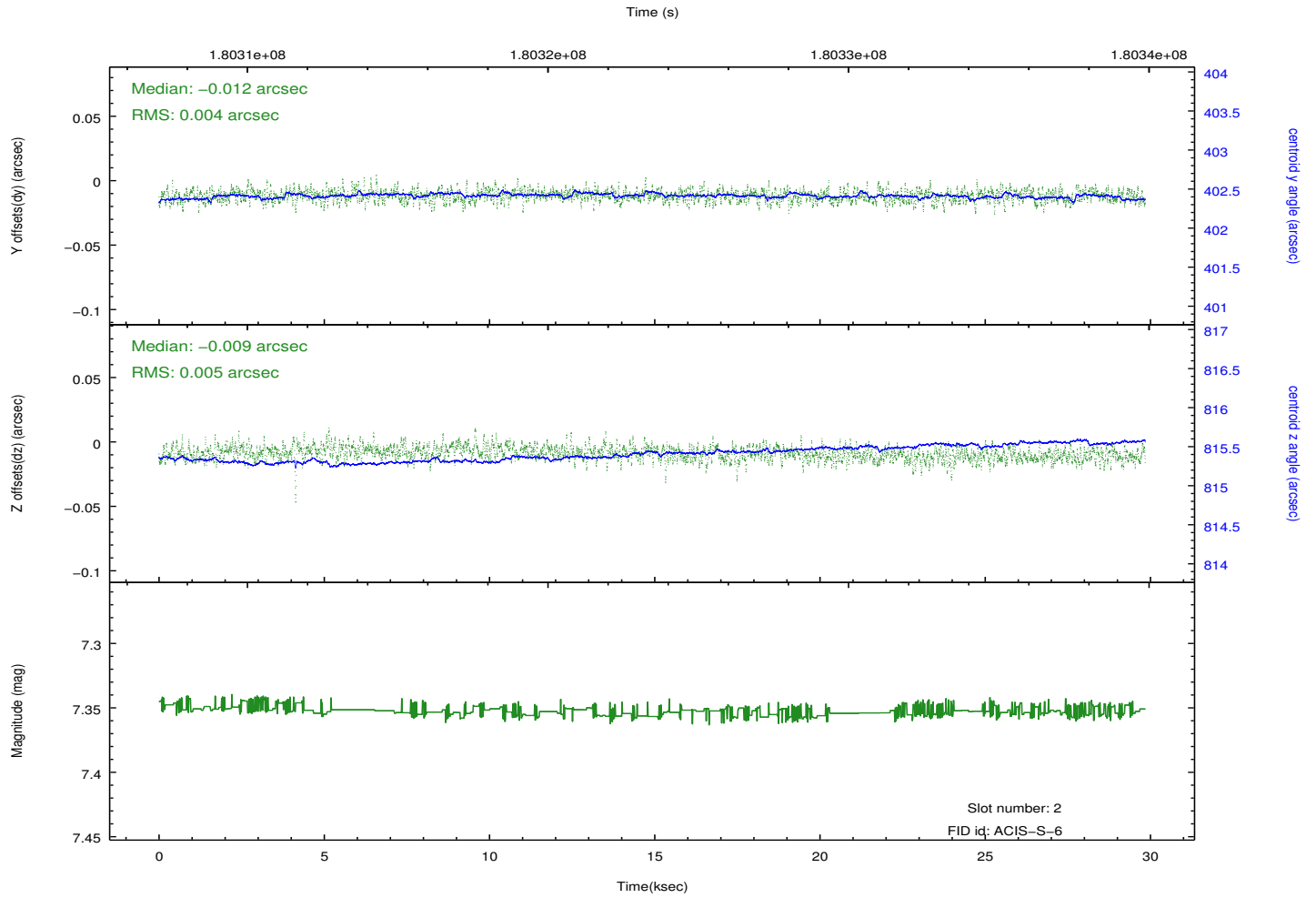
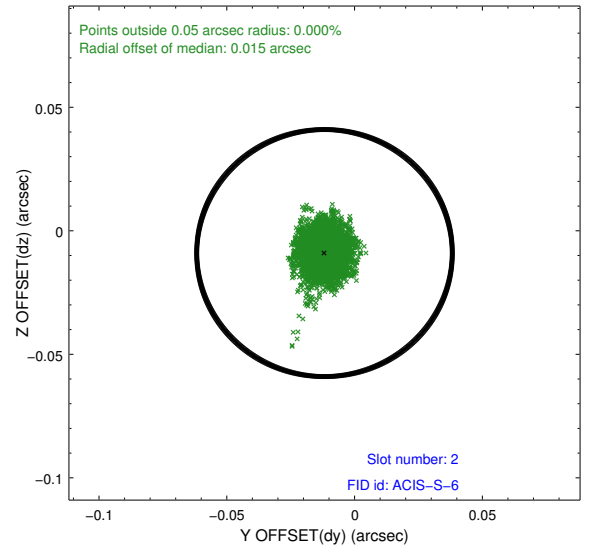
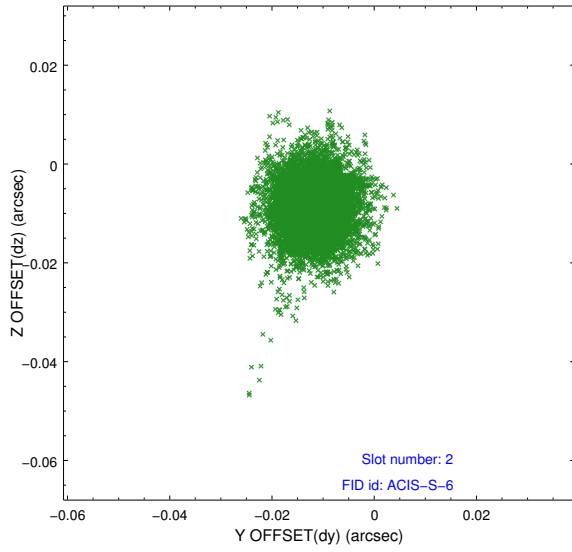
2.5.1 Slot 0



2.5.2 Slot 1



2.5.3 Slot 2



A Summary

A.1 Status

V&V Scientist	Jen Lauer
V&V Date (YYYY-MM-DD)	2012.11.29
V&V Edition	1
V&V Disposition and Status	OK
V&V Charge Time	29.564

A.2 Comments