

V&V Reference Report

L2 ASCDS Version : 8.4.5

Observation 4077 - L2 Version 3
Chandra X-Ray Center

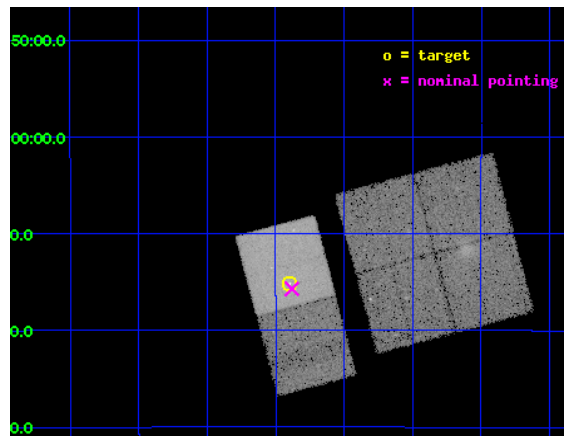
L2 Processing Date : Oct 31 2012

Contents

1	Front	2
2	OBI	3
2.1	OBI	3
2.1.1	Images	3
2.1.2	Bias	3
2.1.3	Parameters	4
2.1.4	Events	4
2.2	Compared Parameters	5
2.3	Aspect	6
2.4	Star Slots	9
2.4.1	Slot 3	9
2.4.2	Slot 4	10
2.4.3	Slot 5	11
2.4.4	Slot 6	12
2.4.5	Slot 7	13
2.5	FID Slots	14
2.5.1	Slot 0	14
2.5.2	Slot 1	15
2.5.3	Slot 2	16
A	Summary	17
A.1	Status	17
A.2	Comments	17

1 Front

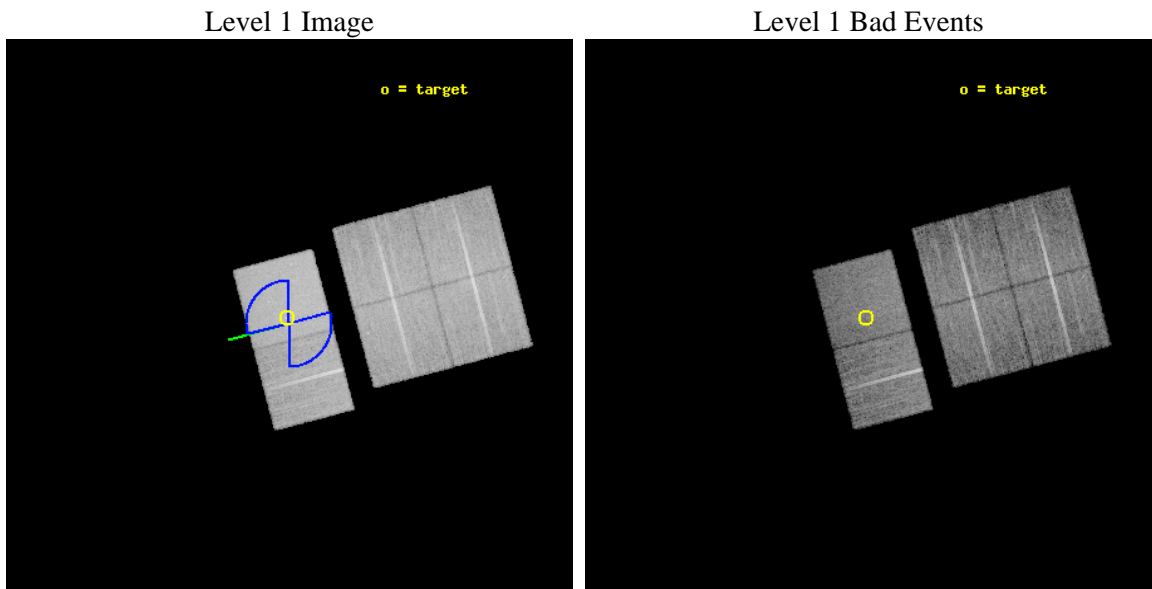
seq_num	700756	Sequence number
obs_id	4077	Observation id
title	PROBING THE STRUCTURE OF THE NARROW-LINE REGION IN SEYFERT GALAXIES WITH CXO IMAGING SPECTROSCOPY	Proposal title
observer	Dr. Steven Kraemer	Principal investigator
object	NGC 5728	Source name
dtcycle	0	
cycle	P	events from which exps? Prim/Second/Both
ra_targ	220.599583	Observer's specified target RA [deg]
dec_targ	-17.253056	Observer's specified target Dec [deg]
ra_nom	220.59530810605	Nominal RA [deg]
dec_nom	-17.261853501047	Nominal Dec [deg]
roll_nom	255.15535152378	Nominal Roll [deg]
revision	3	Processing version of data
ontime	18966.047486395	Sum of GTIs [s]
livetime	18725.887973139	Livetime [s]
ontime0	18959.606545925	Sum of GTIs [s]
ontime1	18965.883326411	Sum of GTIs [s]
ontime2	18965.924366385	Sum of GTIs [s]
ontime3	18965.965406388	Sum of GTIs [s]
ontime6	18966.006446391	Sum of GTIs [s]
ontime7	18966.047486395	Sum of GTIs [s]
l2events	155384	Number of level 2 events



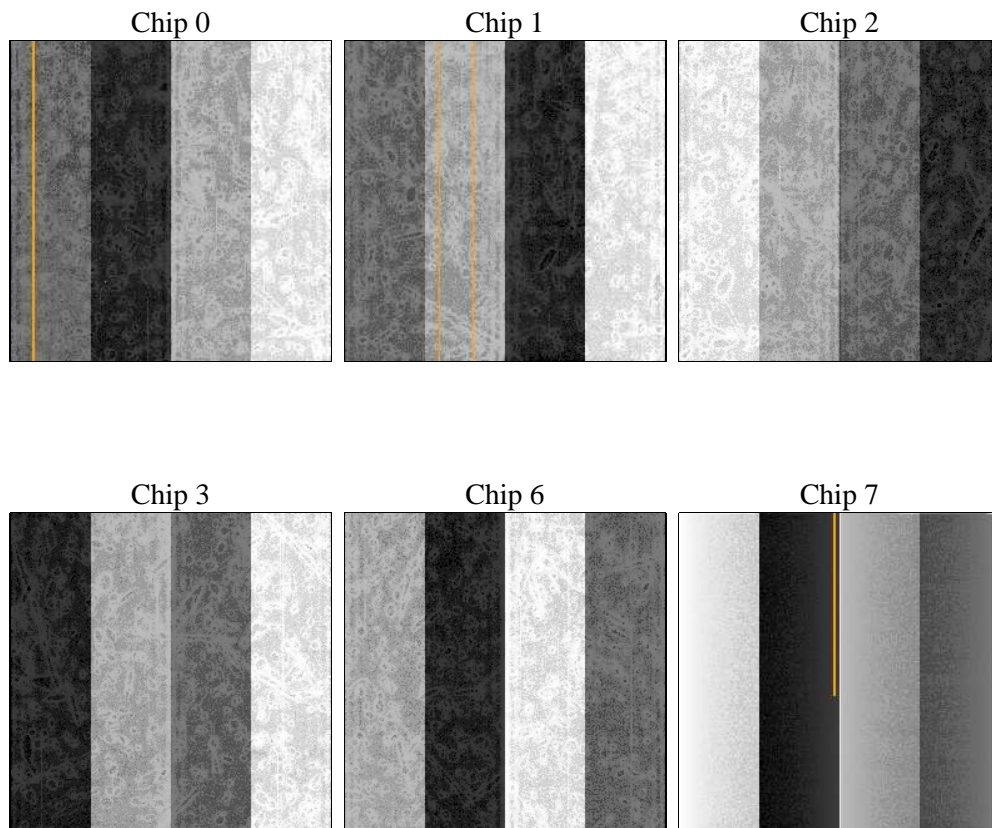
2 OBI

2.1 OBI

2.1.1 Images



2.1.2 Bias



2.1.3 Parameters

obi_num	1	Obi number	sched_exp_time	19000.000000	[s] Scheduled observation exposure time
ascdsver	8.4.5	Processing system revision	ontime	18966.047486395	Sum of GTIs [s]
caldbver	4.5.2	 	ontime0	18959.606545925	Sum of GTIs [s]
date	2012-10-31T03:51:00	Date and time of file creation	ontime1	18965.883326411	Sum of GTIs [s]
revision	3	Processing version of data	ontime2	18965.924366385	Sum of GTIs [s]
			ontime3	18965.965406388	Sum of GTIs [s]
			ontime6	18966.006446391	Sum of GTIs [s]
			ontime7	18966.047486395	Sum of GTIs [s]
			l1events	712985	Number of level 1 events

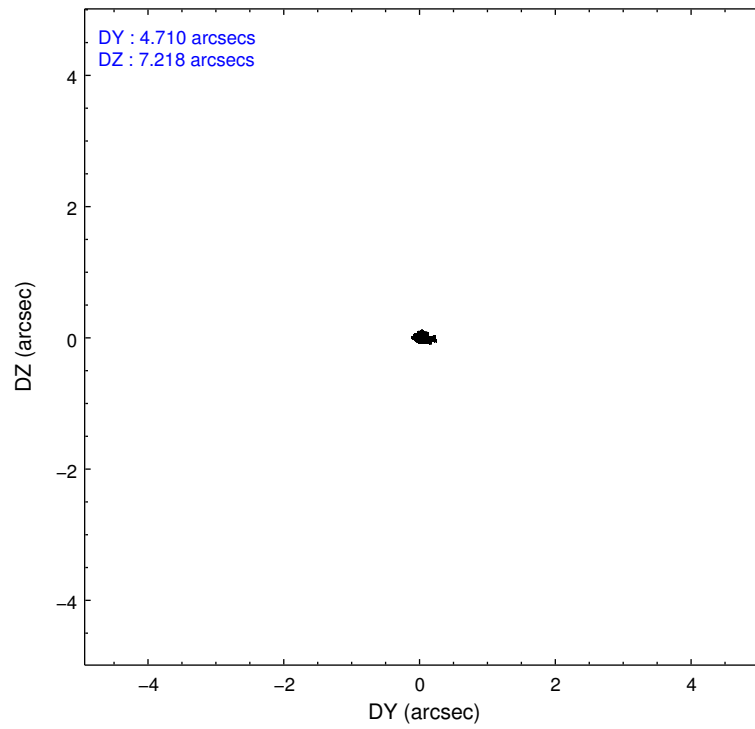
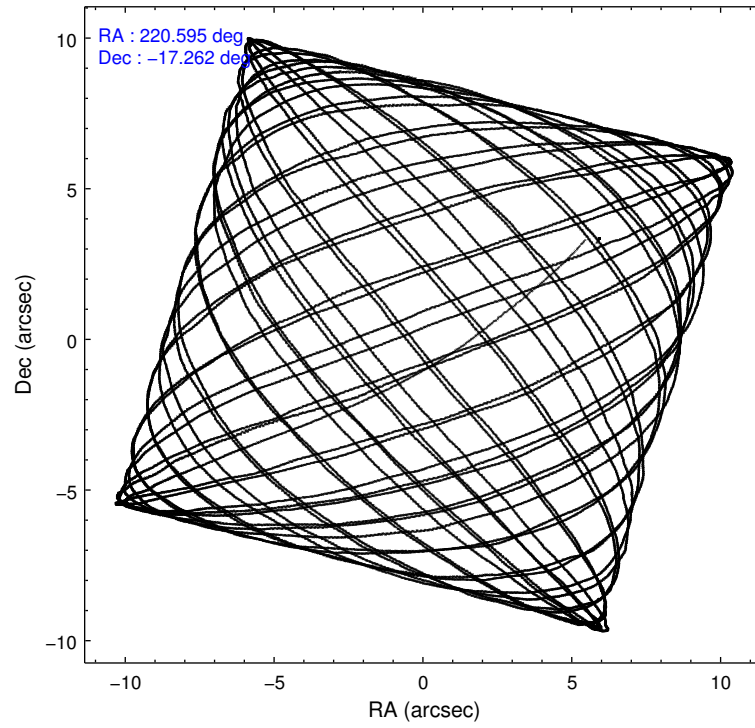
2.1.4 Events

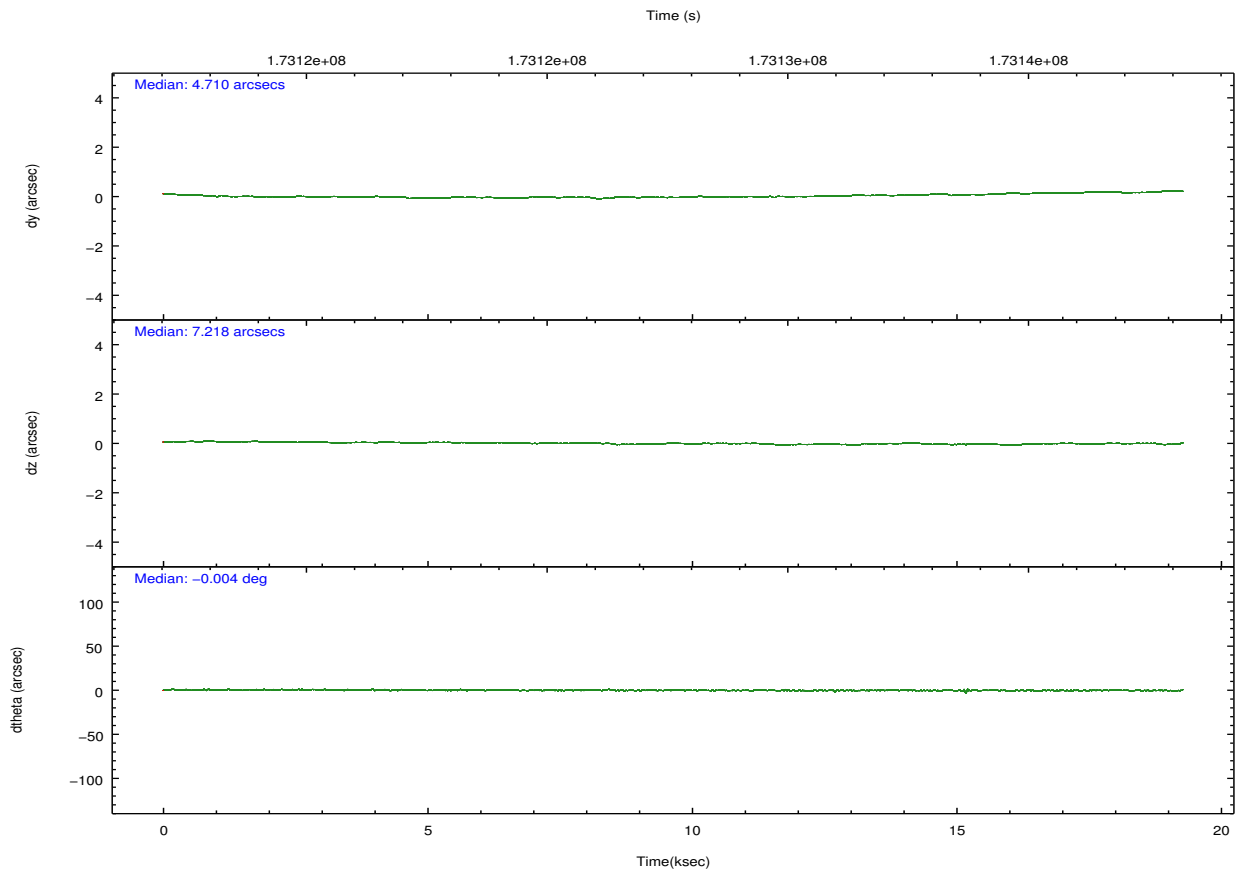
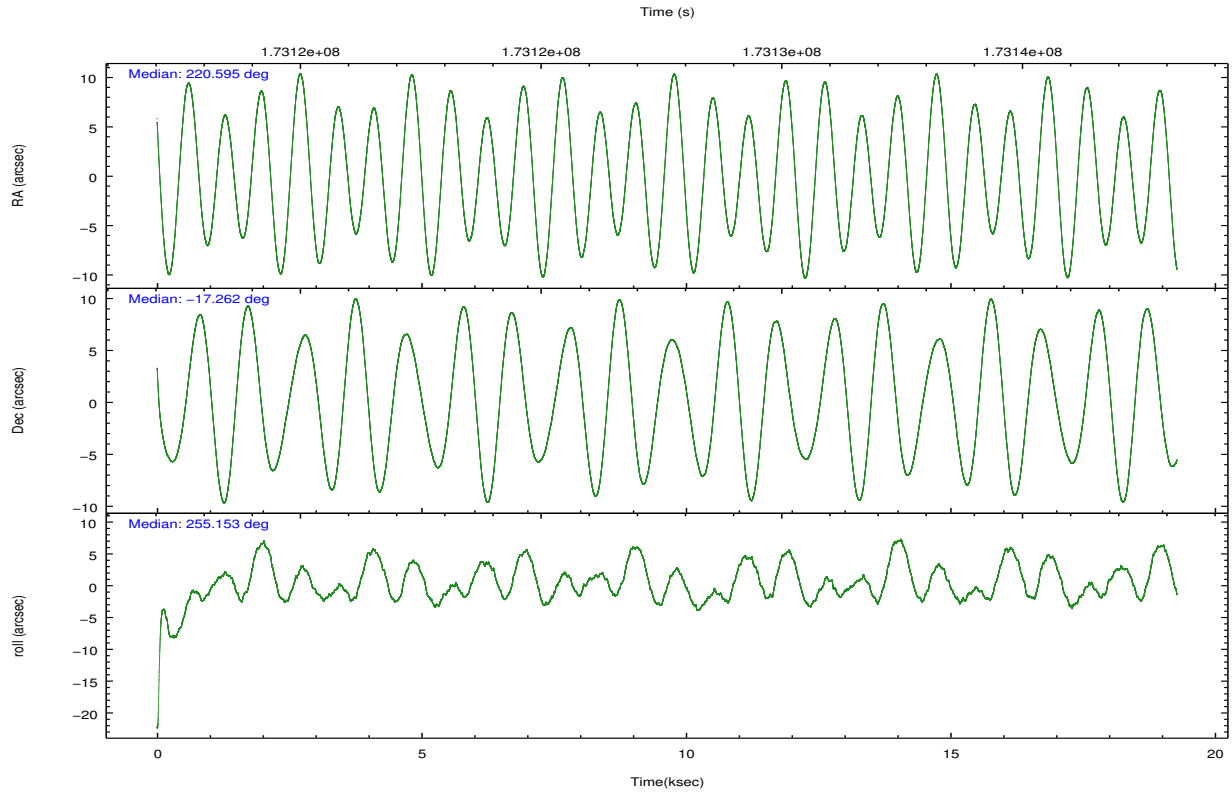
	ccd 0	ccd 1	ccd 2	ccd 3	ccd 6	ccd 7		ccd 0	ccd 1	ccd 2	ccd 3	ccd 6	ccd 7
level 1 events	109953	105786	107987	110619	115562	163078	grade 0 events	10443	9074	9668	9429	9410	7809
rejected events	90675	87289	90379	93325	97144	86798		9%	8%	8%	8%	8%	4%
rejected %	82%	82%	83%	84%	84%	53%	grade 1 events	72	58	63	82	63	124
								0%	0%	0%	0%	0%	0%
							grade 2 events	3410	3584	2902	2746	3273	14650
								3%	3%	2%	2%	2%	8%
							grade 3 events	1496	1491	1373	1340	1449	6639
								1%	1%	1%	1%	1%	4%
							grade 4 events	1381	1519	1385	1412	1422	6593
								1%	1%	1%	1%	1%	4%
							grade 5 events	4567	4667	4233	4731	4975	14418
								4%	4%	3%	4%	4%	8%
							grade 6 events	2550	2830	2283	2369	2864	40599
								2%	2%	2%	2%	2%	24%
							grade 7 events	86034	82563	86080	88510	92106	72246
								78%	78%	79%	80%	79%	44%

2.2 Compared Parameters

Parameter	Planned	Actual	Parameter	Planned	Actual
Instrument	ACIS	ACIS	Obspar format version number	7	7
Detector	ACIS-012367	ACIS-012367	Obspar file type	PREDICTED	ACTUAL
Grating	NONE	NONE	Obspar update status	NONE	UPDATED
Data mode	FAINT	FAINT	Number of optional ACIS chips dropped	0	0
Observation mode	POINTING	POINTING	On-chip summing requested	N	N
[deg] Pointing RA	220.587484	220.5953081060541	Subarray requested	NONE	NONE
[deg] Pointing Dec	-17.235636	-17.26185350104707	Alternating exposures requested	N	N
[deg] Pointing Roll	254.996409	255.1553515237763	[s] Primary exposure time	0.000000	3.2
[deg] Roll angle	307.000000	307.000000			
[deg] Roll tolerance	52.000000	52.000000			
Roll constraint allows 180D rotation	Y	Y			
[mm] SIM focus pos	-0.684267	-0.6828225247311905			
[mm] SIM defocus	0	0.001444936568705701			
[mm] SIM translation stage pos	-190.132523	-190.1425803651734			
[mm] SIM translation stage offset	0	0.01005778216563158			
[s] Observation start time (MET)	173118256.184000	173117249.22715			
Observation start date	2003-06-27T16:23:12	2003-06-27T16:07:29			
[s] Observation end time (MET)	173137256.184000	173138321.69054			
Observation end date	2003-06-27T21:39:52	2003-06-27T21:58:41			
Read mode	TIMED	TIMED			

2.3 Aspect



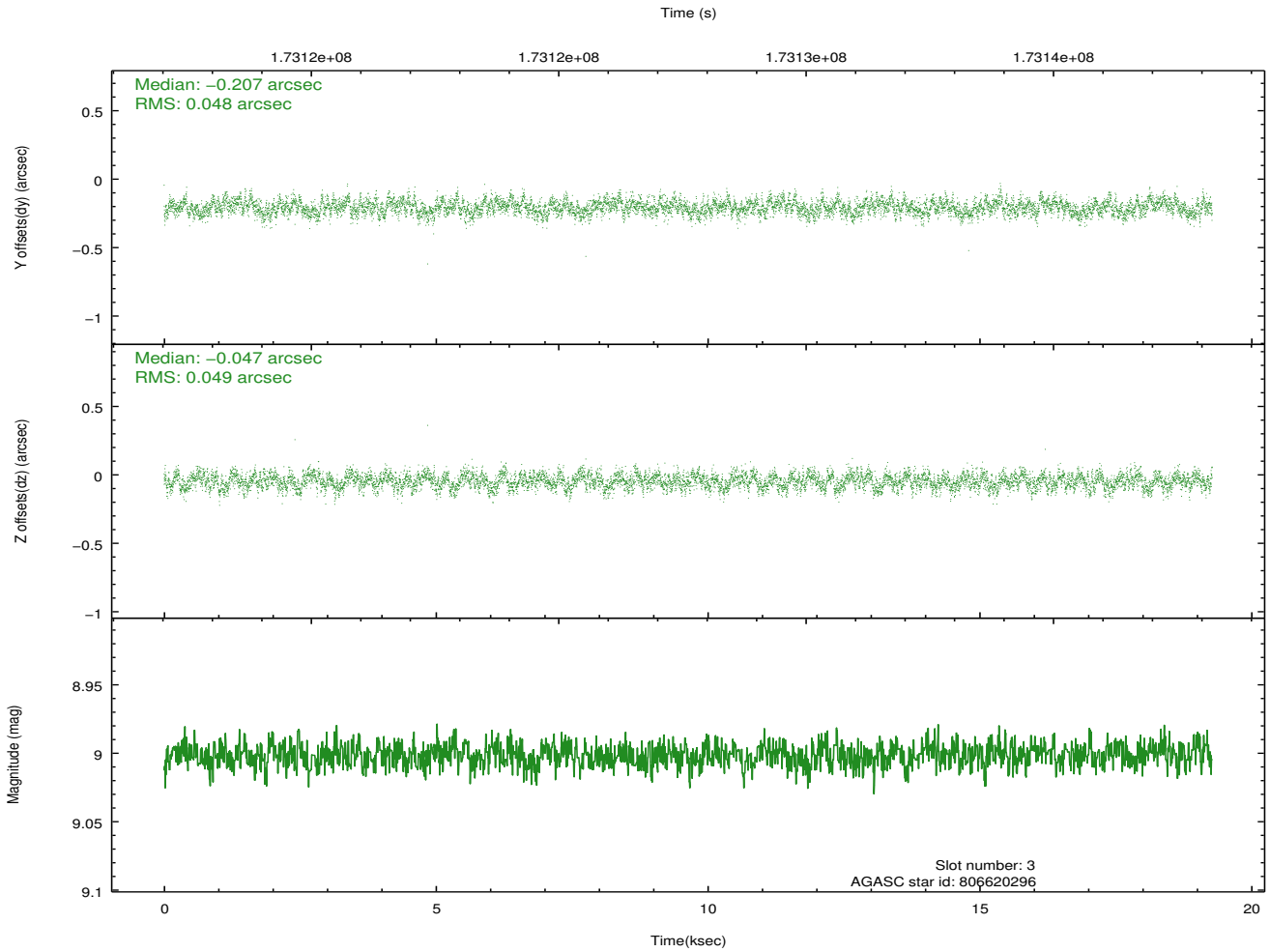
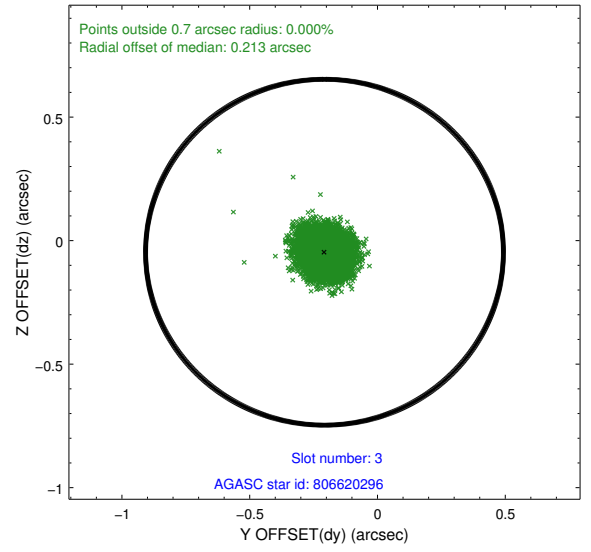
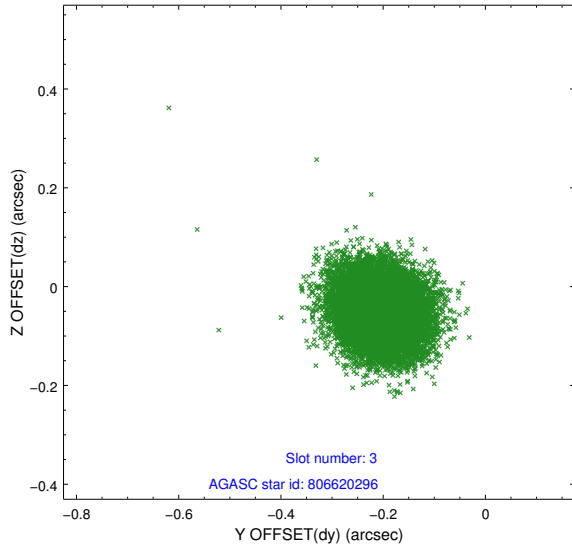


Slot Statistics

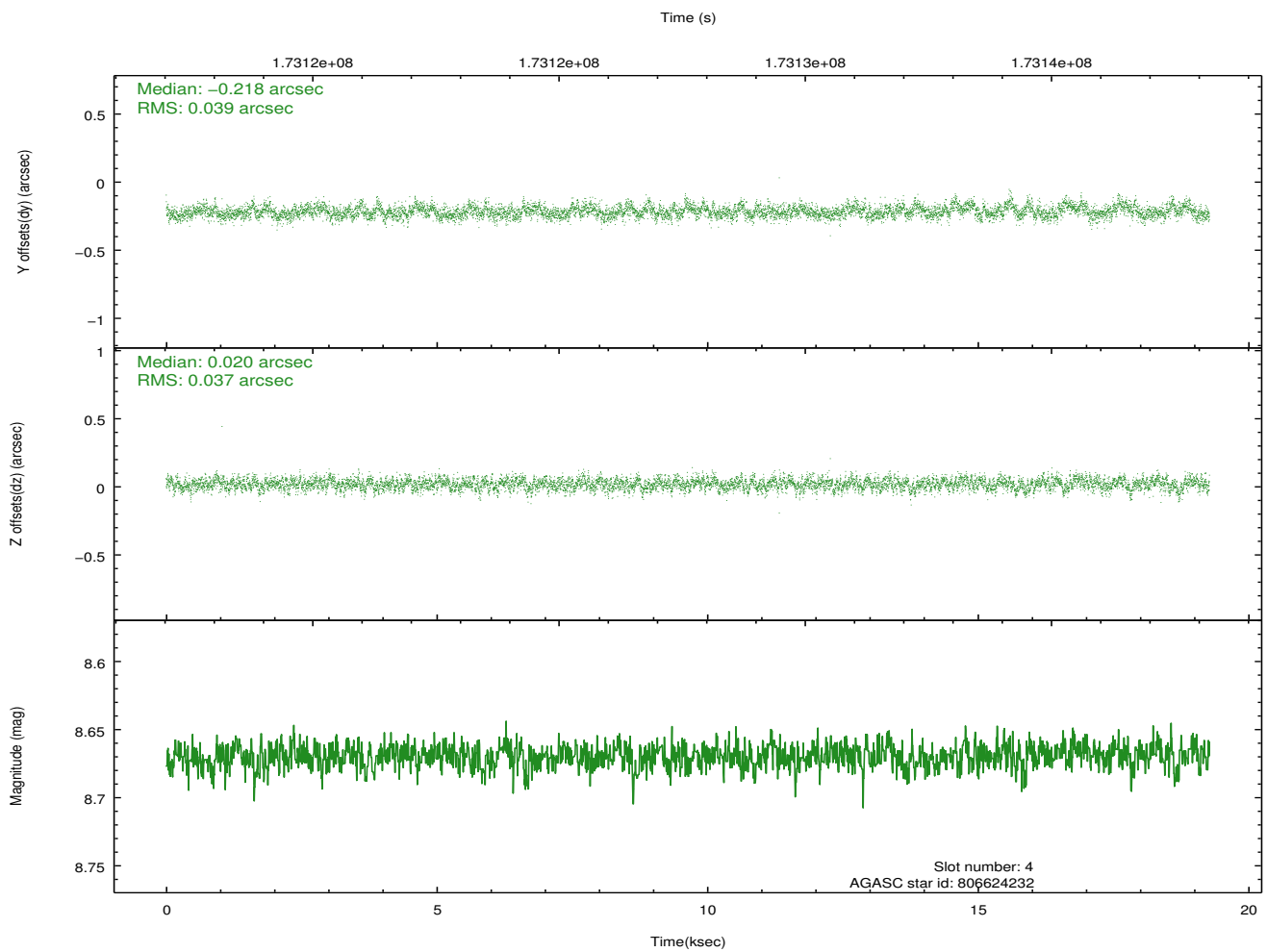
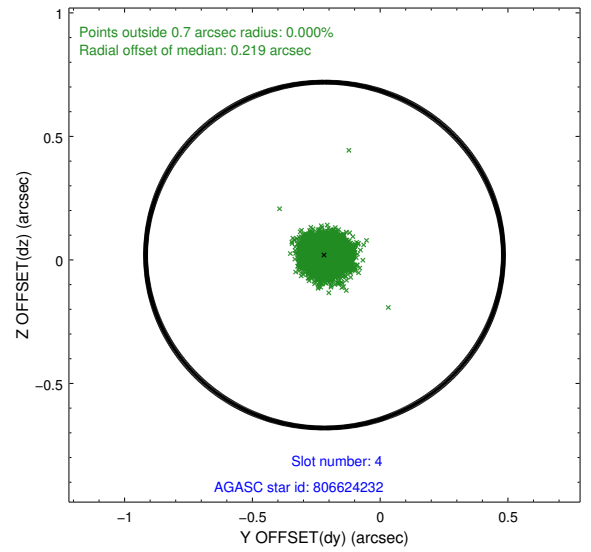
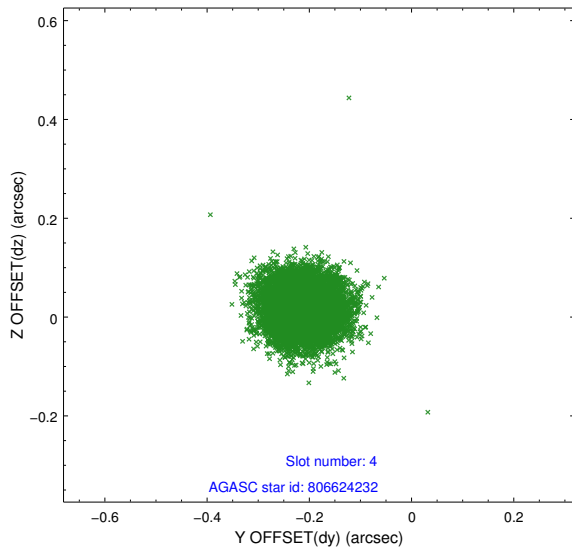
slot	status	id	mag	n_pts	med_dy	med_dz	dr1	dr2	ra	dec	mean_y	mean_z
0	FID	ACIS-S-2	7.11	4703	-0.032	-0.027	0.007	0.011	0.000000	0.000000	-757.47	-1728.36
1	FID	ACIS-S-4	7.20	4702	0.082	0.023	0.006	0.010	0.000000	0.000000	2155.84	179.95
2	FID	ACIS-S-5	7.23	4702	-0.082	0.013	0.007	0.011	0.000000	0.000000	-1810.09	173.86
3	GUIDE	806620296	9.00	9402	-0.207	-0.047	0.074	0.116	220.441495	-16.602565	-2070.57	-1076.43
4	GUIDE	806624232	8.67	9402	-0.218	0.020	0.058	0.093	220.611245	-16.597705	-2239.55	-515.32
5	GUIDE	807021208	8.56	9404	0.024	-0.030	0.059	0.096	219.999524	-17.450421	1272.82	-1749.20
6	GUIDE	807144088	9.07	9398	0.175	-0.013	0.073	0.122	220.566642	-17.822880	2061.15	478.42
7	GUIDE	807145984	9.48	9393	0.222	0.066	0.119	0.193	220.136089	-17.785590	2315.62	-981.31

2.4 Star Slots

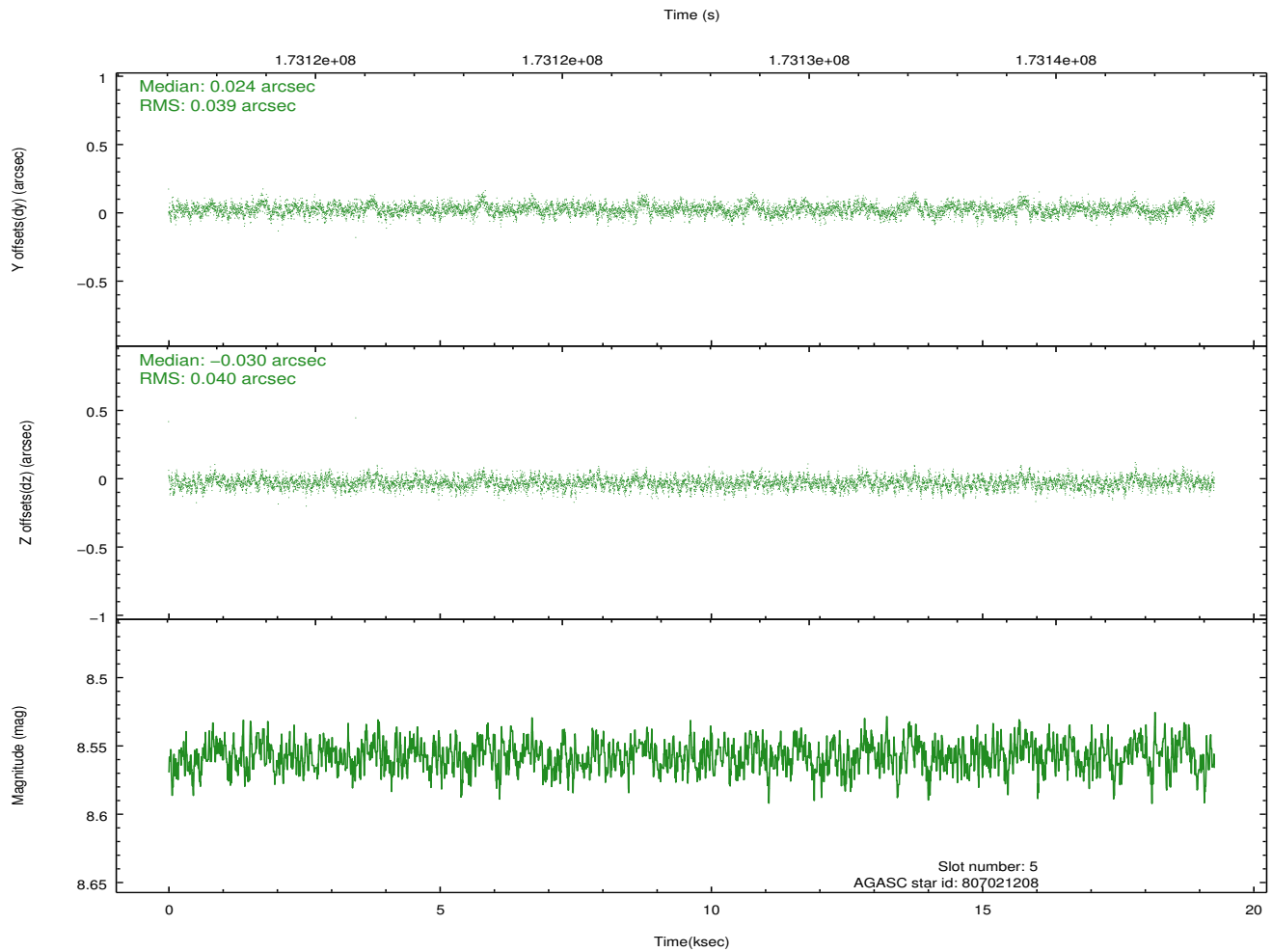
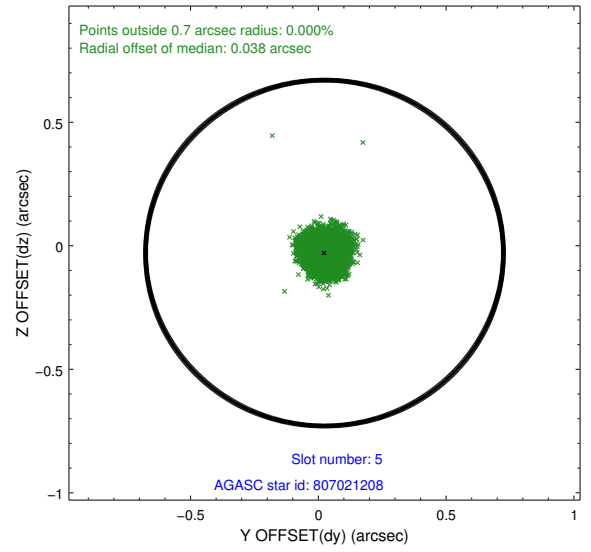
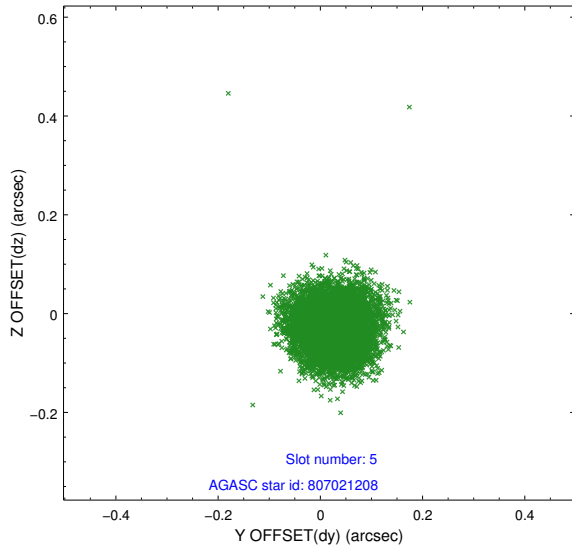
2.4.1 Slot 3



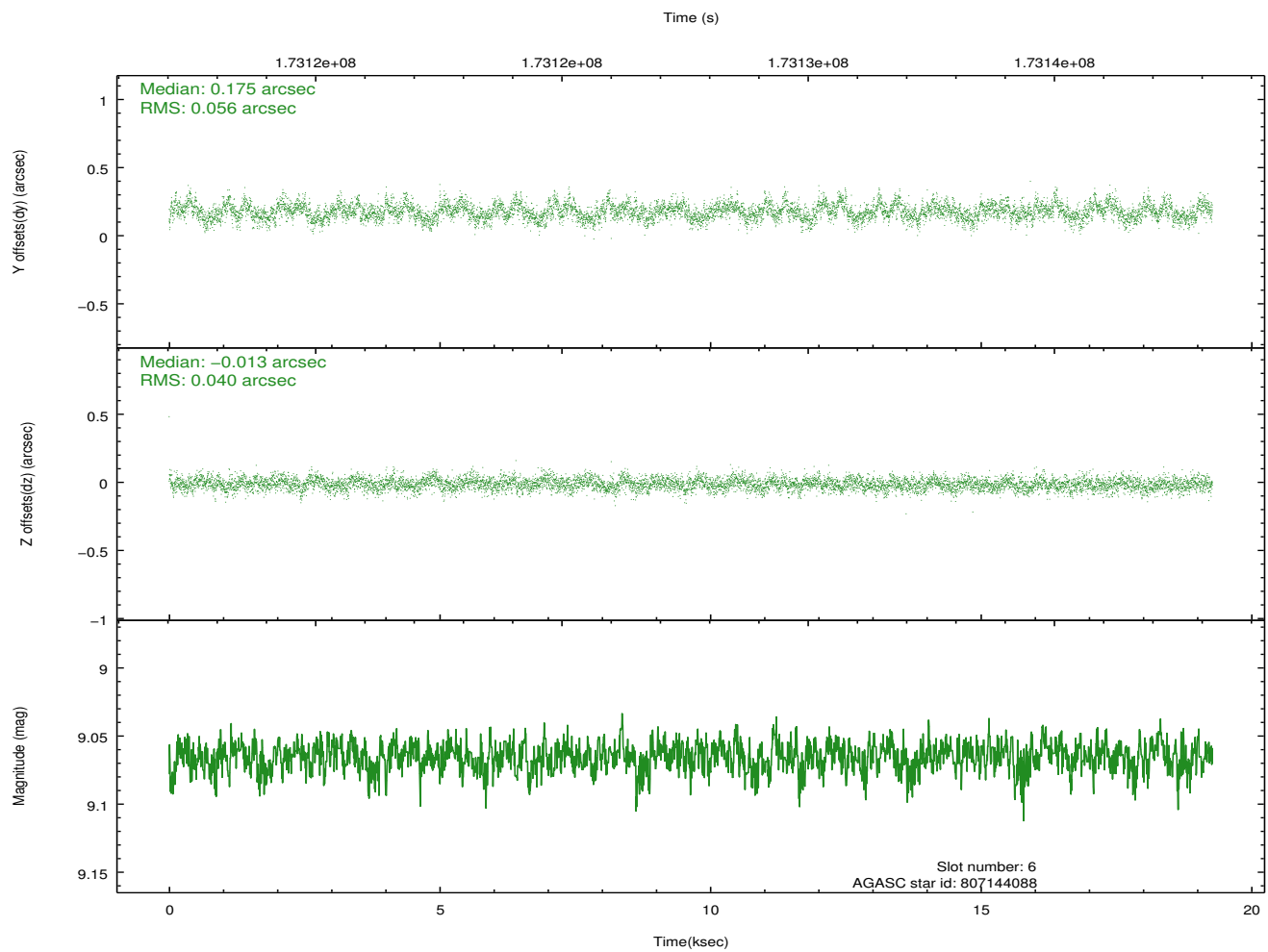
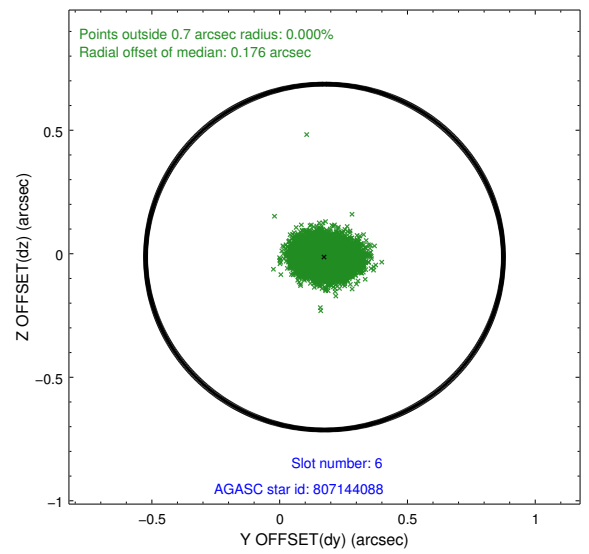
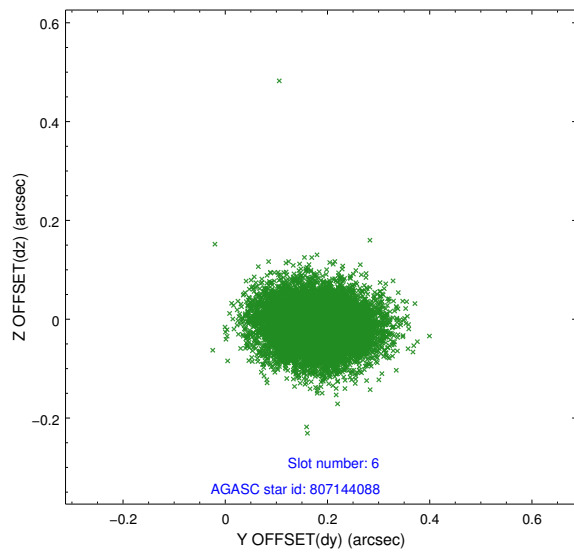
2.4.2 Slot 4



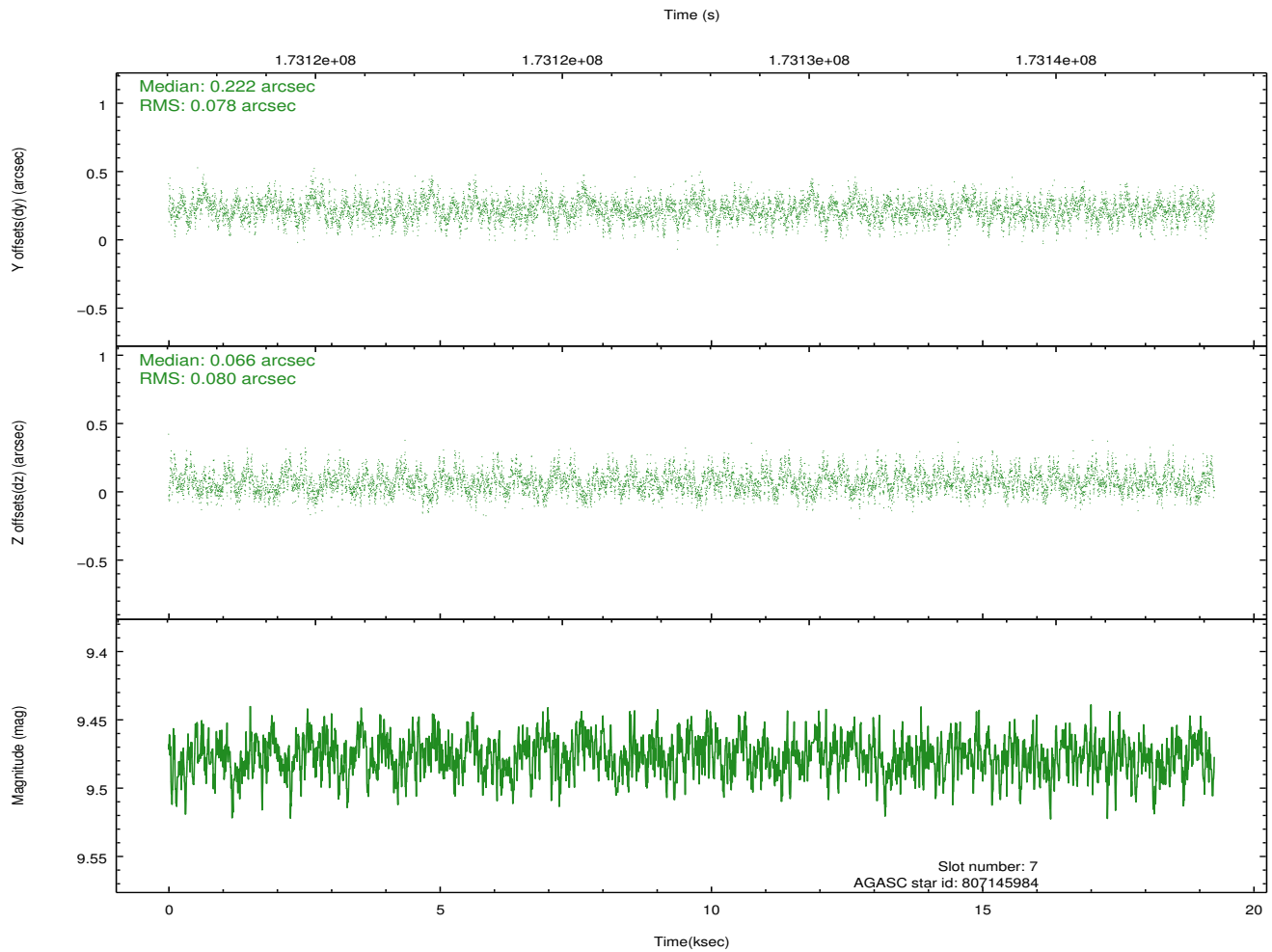
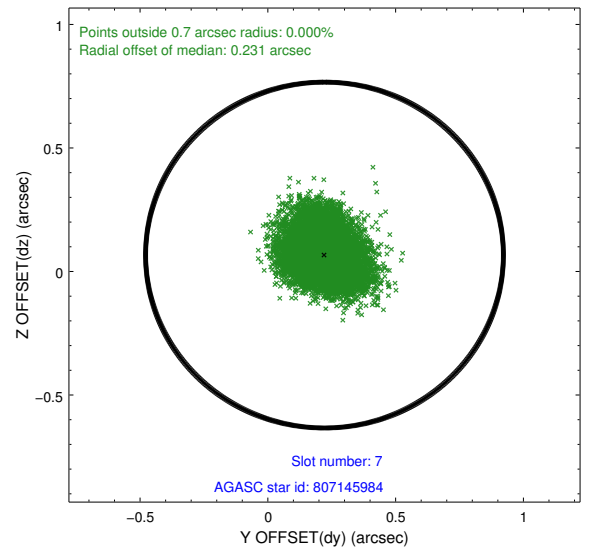
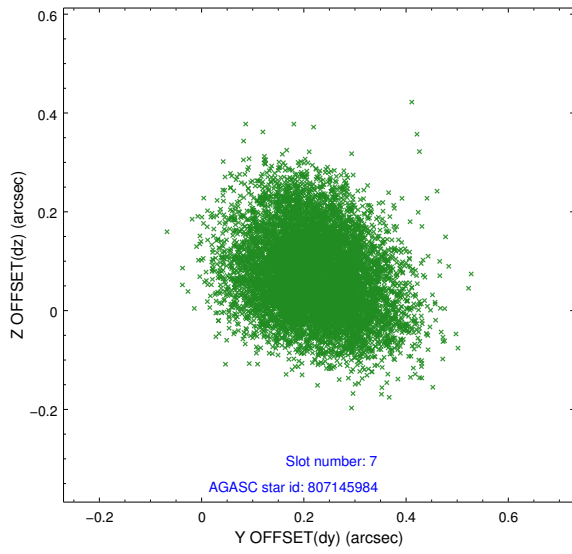
2.4.3 Slot 5



2.4.4 Slot 6

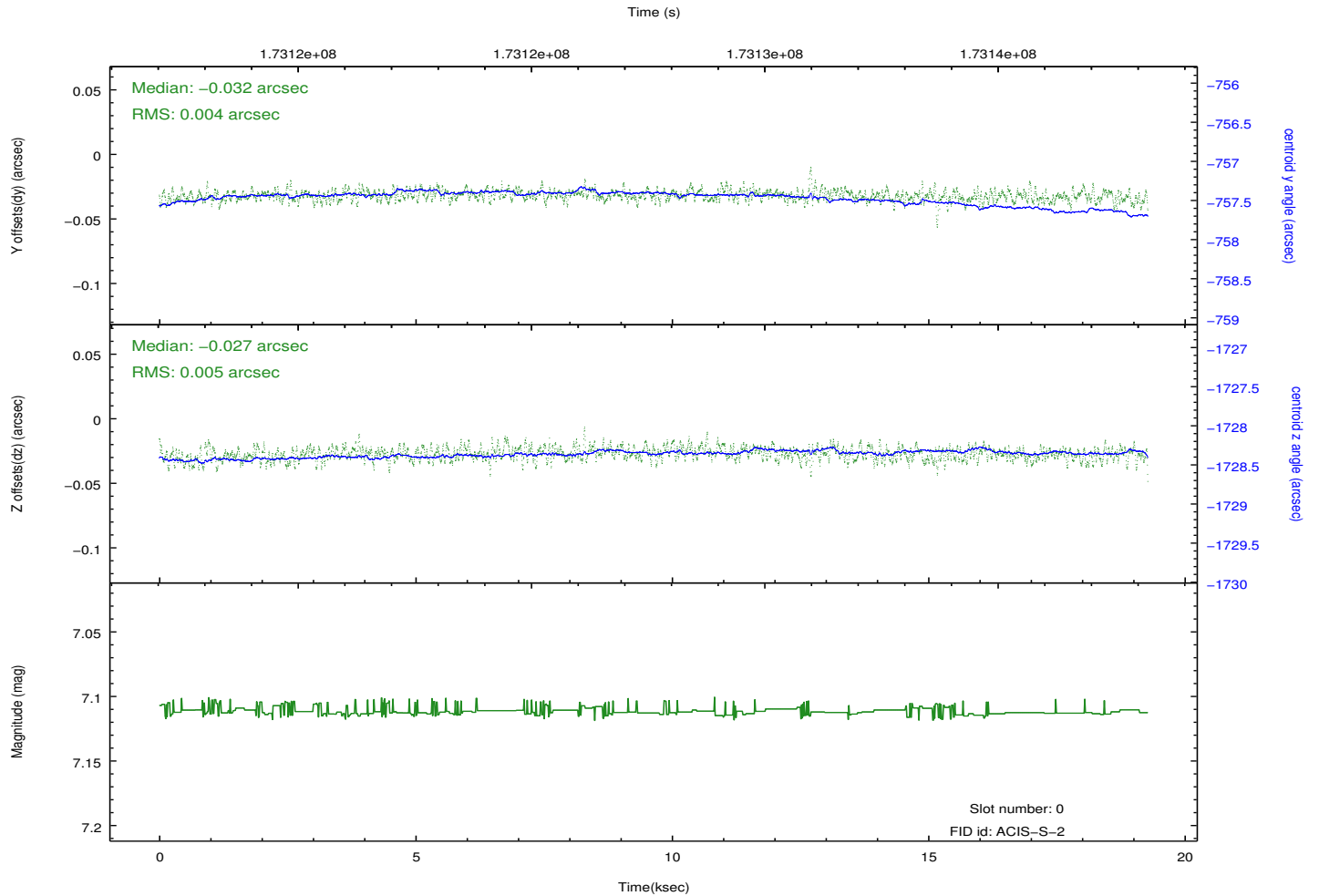
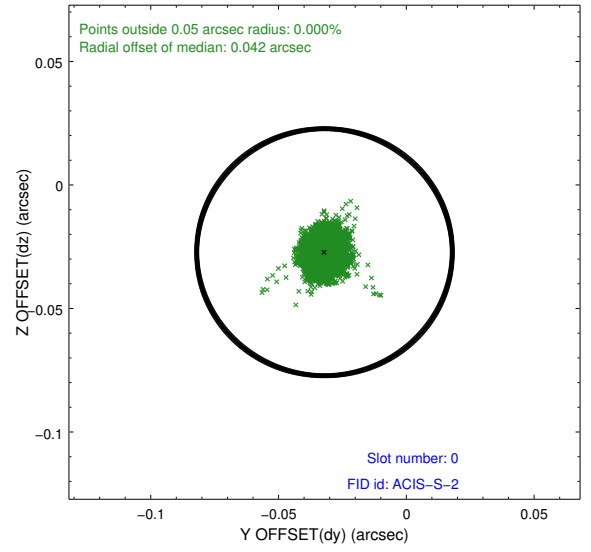
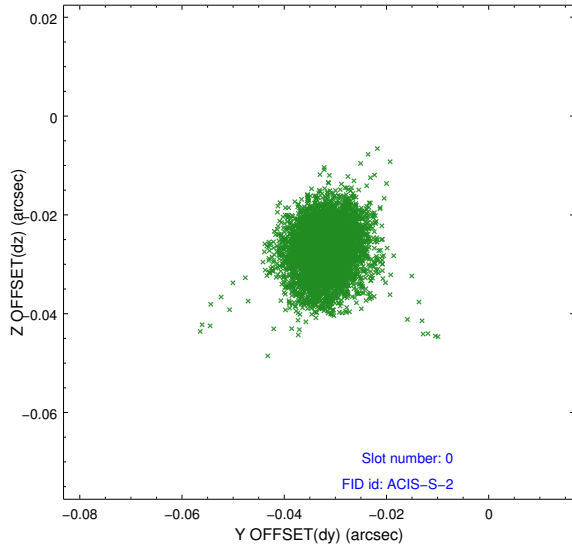


2.4.5 Slot 7

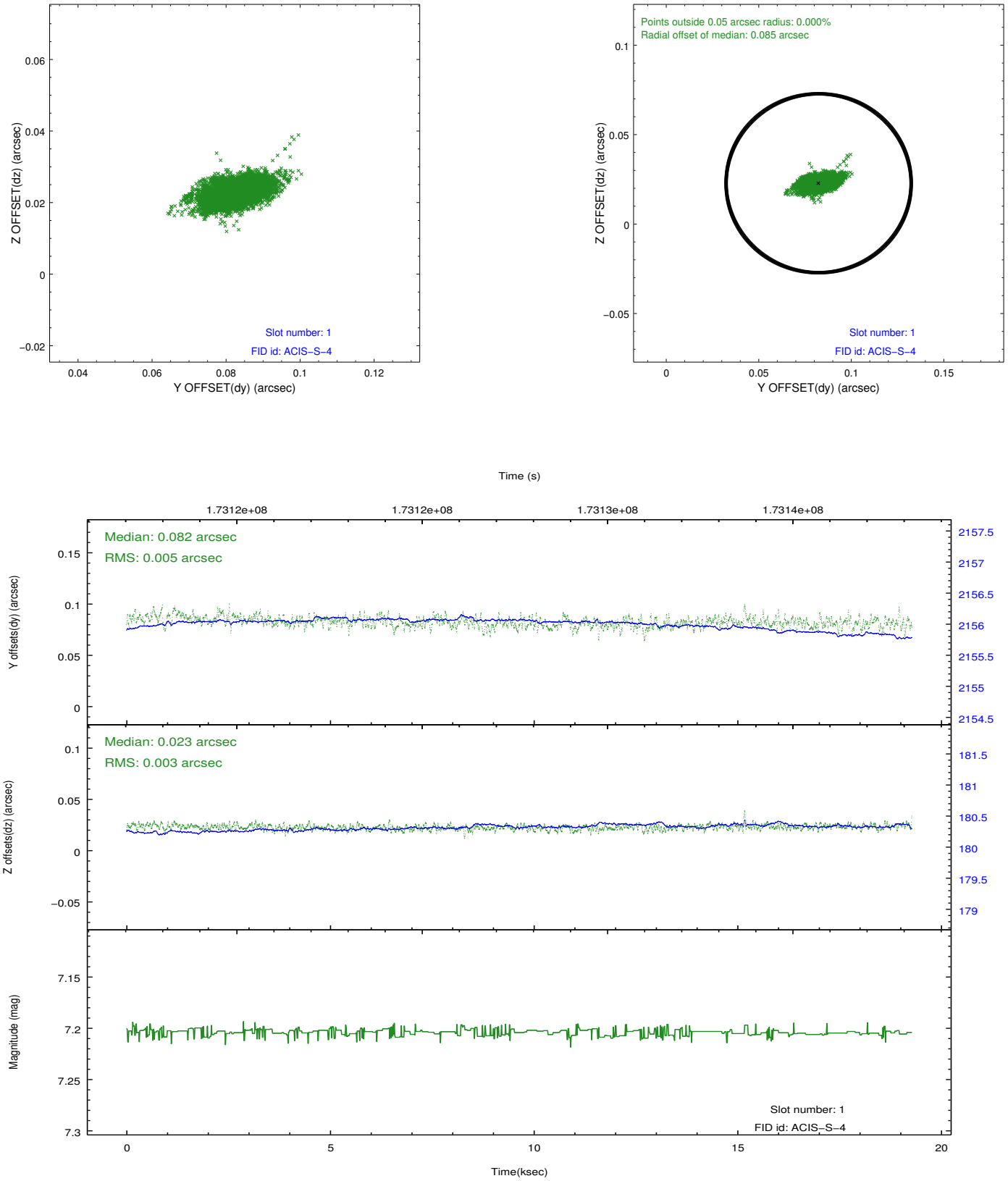


2.5 FID Slots

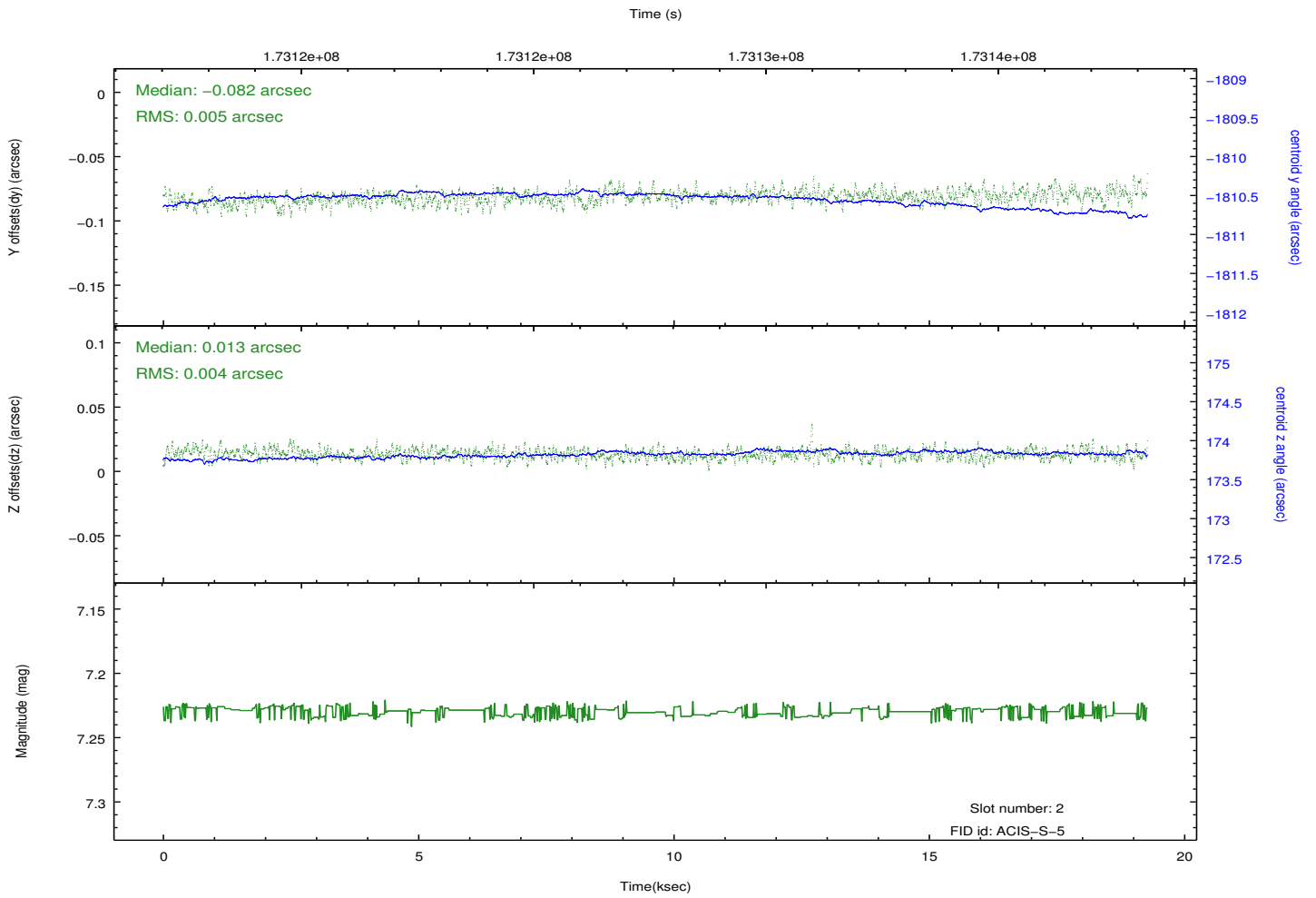
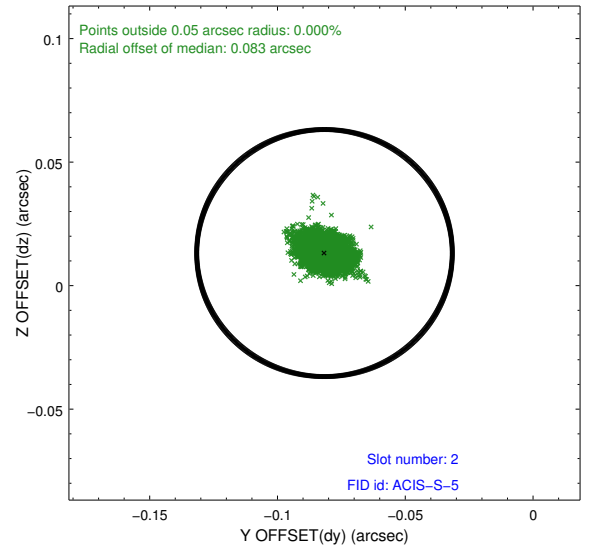
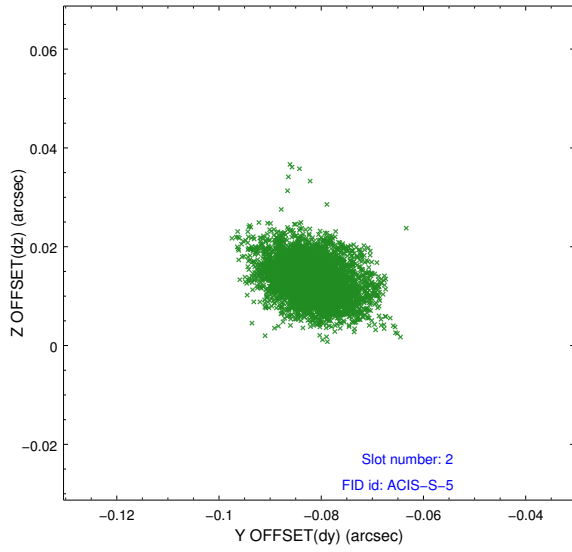
2.5.1 Slot 0



2.5.2 Slot 1



2.5.3 Slot 2



A Summary

A.1 Status

V&V Scientist	Jen Lauer
V&V Date (YYYY-MM-DD)	2012.11.16
V&V Edition	1
V&V Disposition and Status	OK
V&V Charge Time	18.966

A.2 Comments

Roll constraint met. Joint Proposal with HST.