

V&V Reference Report

L2 ASCDS Version : 8.4.5

Observation 4207 - L2 Version 3
Chandra X-Ray Center

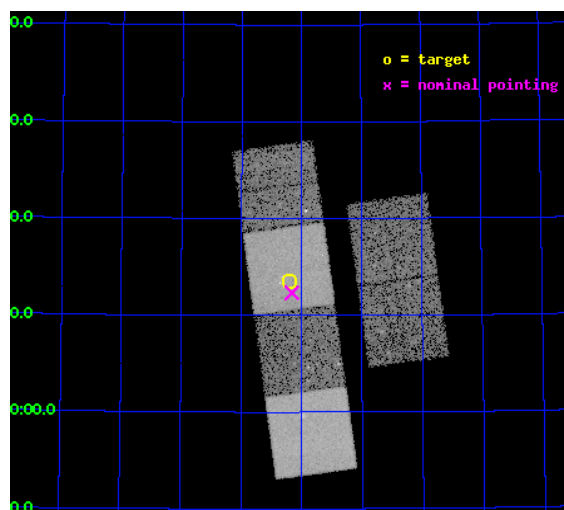
L2 Processing Date : Nov 3 2012

Contents

1	Front	2
2	OBI	3
2.1	OBI	3
2.1.1	Images	3
2.1.2	Bias	3
2.1.3	Parameters	4
2.1.4	Events	4
2.2	Compared Parameters	5
2.3	Aspect	6
2.4	Star Slots	9
2.4.1	Slot 3	9
2.4.2	Slot 4	10
2.4.3	Slot 5	11
2.4.4	Slot 6	12
2.4.5	Slot 7	13
2.5	FID Slots	14
2.5.1	Slot 0	14
2.5.2	Slot 1	15
2.5.3	Slot 2	16
A	Summary	17
A.1	Status	17
A.2	Comments	17

1 Front

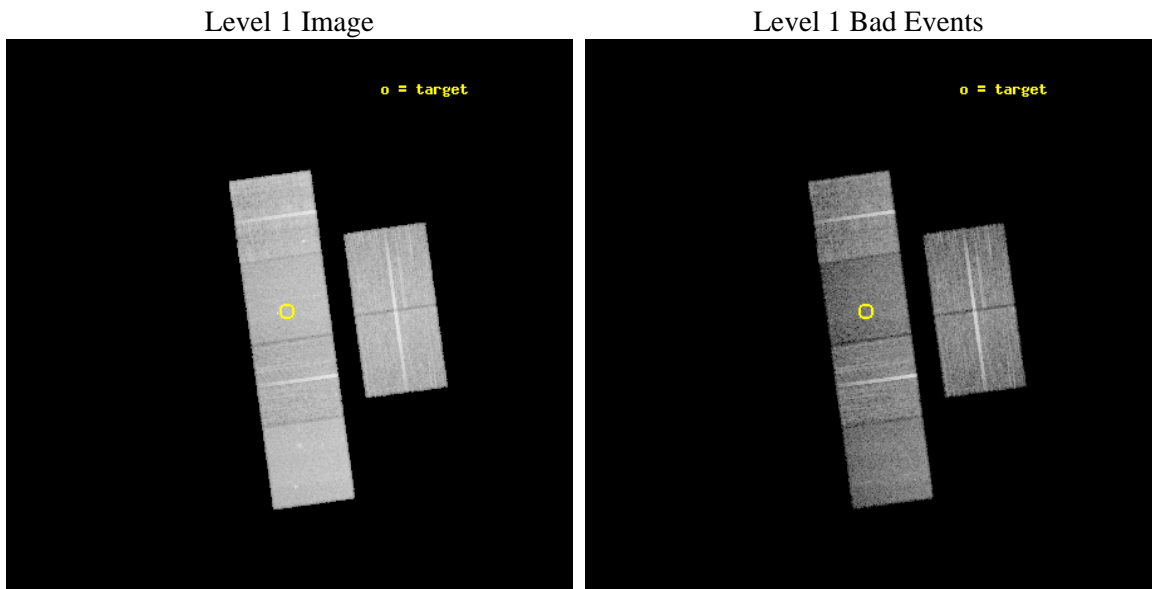
seq_num	800363	Sequence number
obs_id	4207	Observation id
title	DOES A SPIRAL-ONLY COMPACT GROUP HAVE DIFFUSE GAS?	Proposal title
observer	Dr. Naomi Ota	Principal investigator
object	HCG80	Source name
dtcycle	0	
cycle	P	events from which exps? Prim/Second/Both
ra_targ	239.80125	Observer's specified target RA [deg]
dec_targ	65.225833	Observer's specified target Dec [deg]
ra_nom	239.79044389835	Nominal RA [deg]
dec_nom	65.205565312739	Nominal Dec [deg]
roll_nom	262.16820095068	Nominal Roll [deg]
revision	3	Processing version of data
ontime	19964.06790334	Sum of GTIs [s]
livetime	19711.270854629	Livetime [s]
ontime2	19964.108943343	Sum of GTIs [s]
ontime3	19963.94478333	Sum of GTIs [s]
ontime5	19964.026863337	Sum of GTIs [s]
ontime6	19963.985823333	Sum of GTIs [s]
ontime7	19964.06790334	Sum of GTIs [s]
ontime8	19963.903743356	Sum of GTIs [s]
l2events	147687	Number of level 2 events



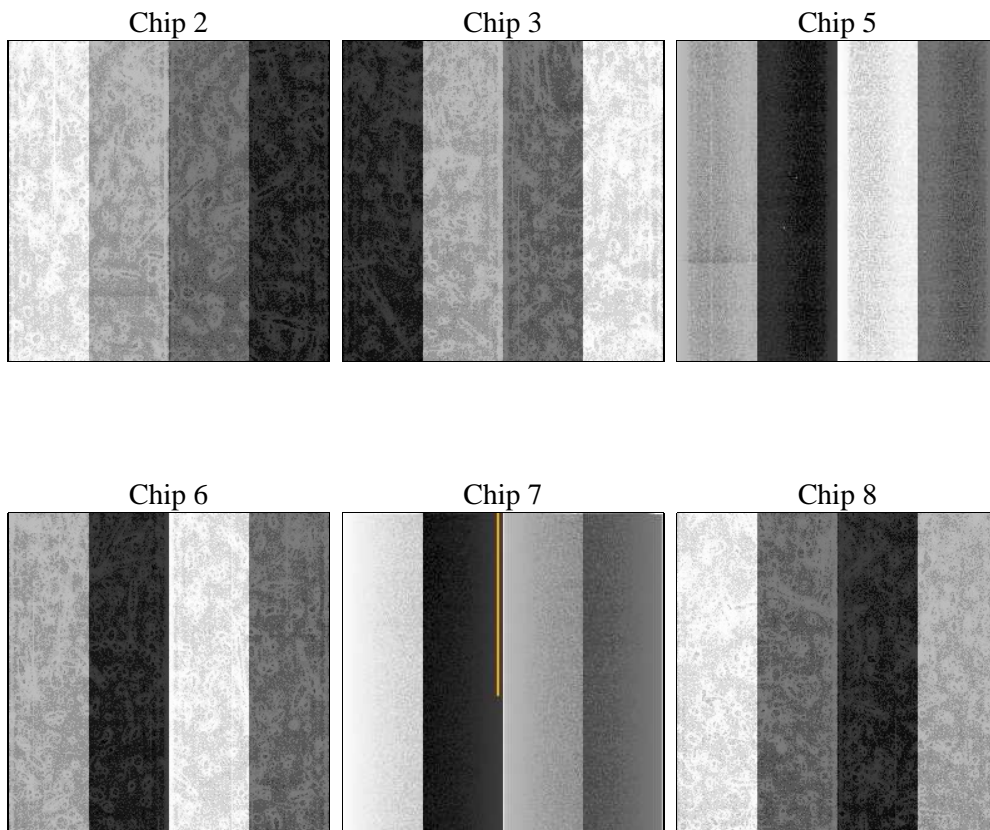
2 OBI

2.1 OBI

2.1.1 Images



2.1.2 Bias



2.1.3 Parameters

obi_num	0	Obi number	sched_exp_time	20000.000000	[s] Scheduled observation exposure time
ascdsver	8.4.5	Processing system revision	ontime	19964.06790334	Sum of GTIs [s]
caldsver	4.5.2	 	ontime2	19964.108943343	Sum of GTIs [s]
date	2012-11-03T15:01:09	Date and time of file creation	ontime3	19963.94478333	Sum of GTIs [s]
revision	3	Processing version of data	ontime5	19964.026863337	Sum of GTIs [s]
			ontime6	19963.985823333	Sum of GTIs [s]
			ontime7	19964.06790334	Sum of GTIs [s]
			ontime8	19963.903743356	Sum of GTIs [s]
			l1events	667659	Number of level 1 events

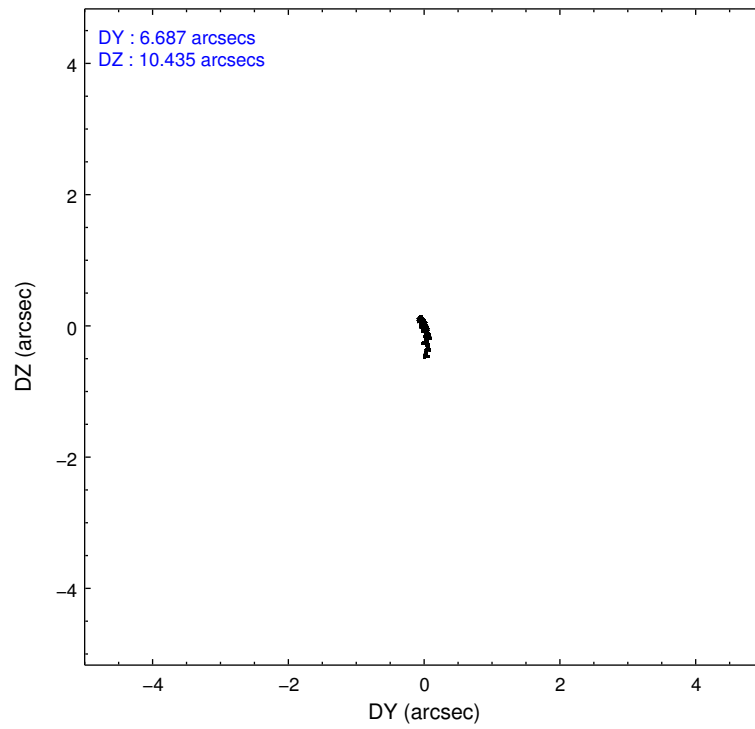
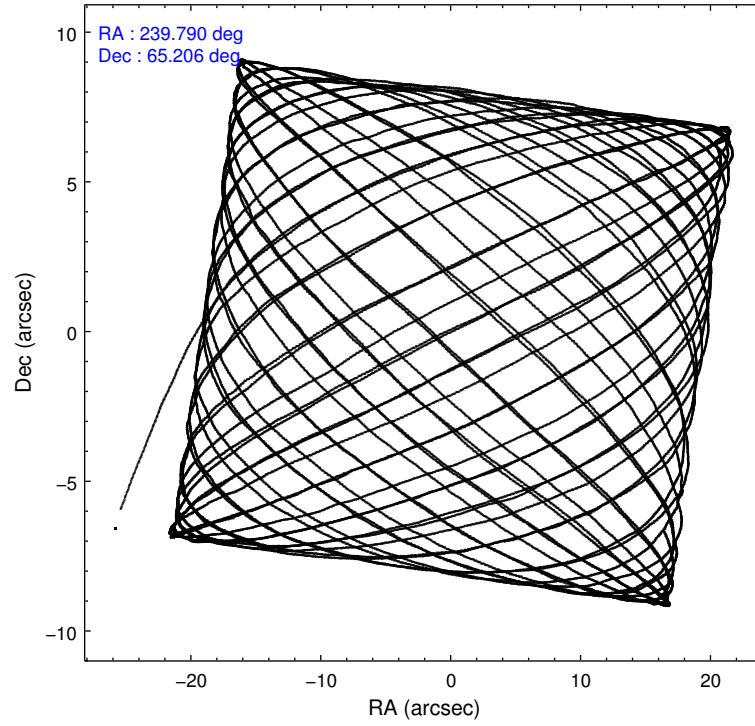
2.1.4 Events

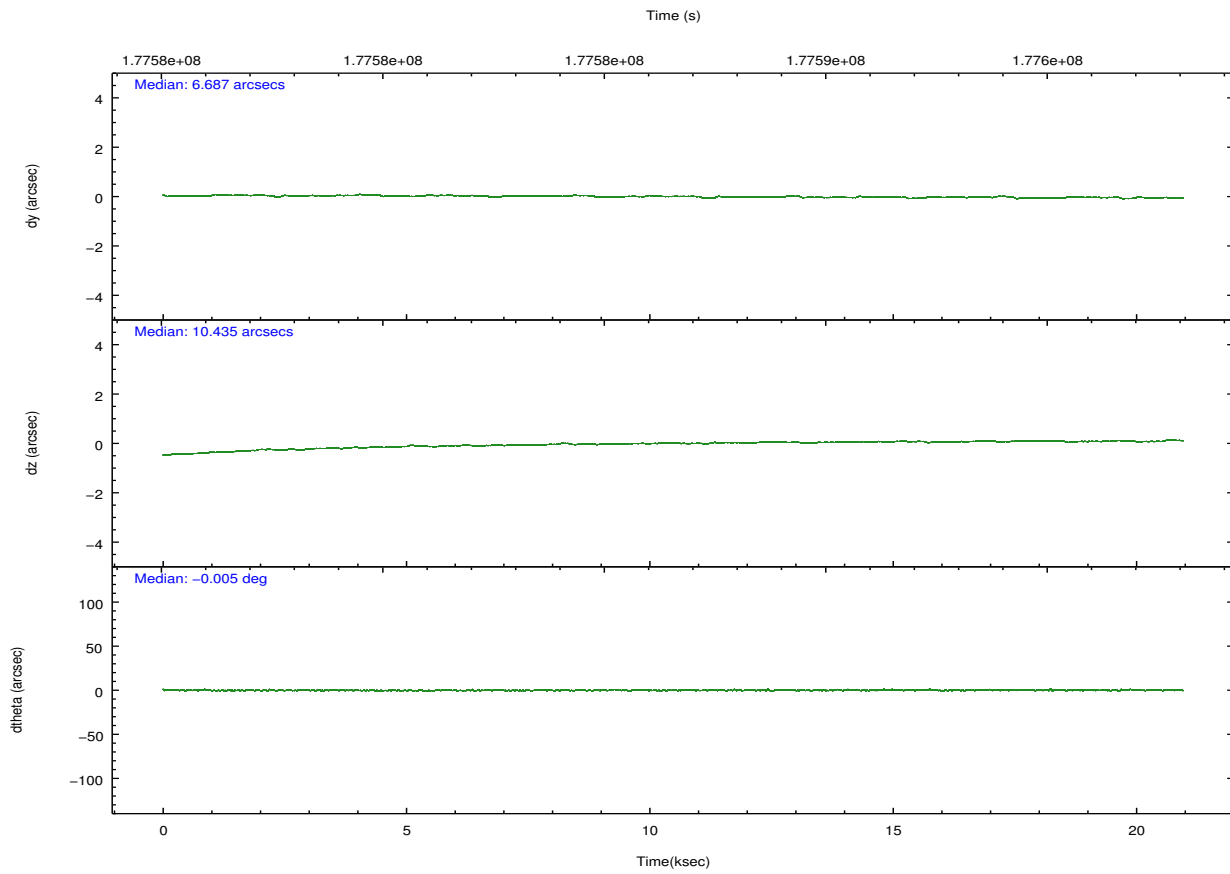
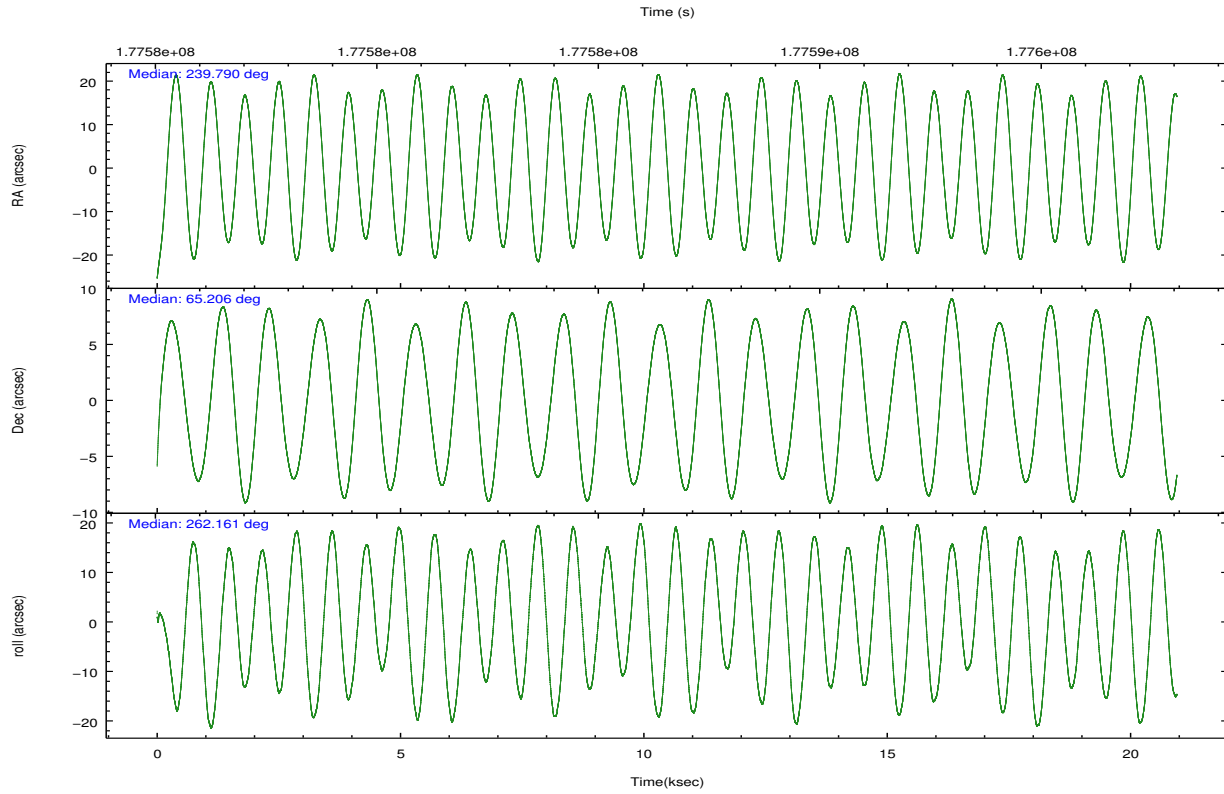
	ccd 2	ccd 3	ccd 5	ccd 6	ccd 7	ccd 8		ccd 2	ccd 3	ccd 5	ccd 6	ccd 7	ccd 8
level 1 events	103654	98883	131294	100876	110109	122843	grade 0 events	3698	3374	4775	4024	4957	8887
rejected events	93730	89449	67426	90185	59579	95341		3%	3%	3%	3%	4%	7%
rejected %	90%	90%	51%	89%	54%	77%	grade 1 events	55	46	89	43	94	99
								0%	0%	0%	0%	0%	0%
							grade 2 events	2240	1946	18725	2187	10032	5875
								2%	1%	14%	2%	9%	4%
							grade 3 events	1067	1141	3144	1194	4769	3026
								1%	1%	2%	1%	4%	2%
							grade 4 events	1064	1158	2991	1127	4874	2685
								1%	1%	2%	1%	4%	2%
							grade 5 events	3324	3885	10963	4140	11697	5536
								3%	3%	8%	4%	10%	4%
							grade 6 events	1856	1816	34237	2160	25903	7032
								1%	1%	26%	2%	23%	5%
							grade 7 events	90350	85517	56370	86001	47783	89703
								87%	86%	42%	85%	43%	73%

2.2 Compared Parameters

Parameter	Planned	Actual	Parameter	Planned	Actual
Instrument	ACIS	ACIS	Obspar format version number	7	7
Detector	ACIS-235678	ACIS-235678	Obspar file type	PREDICTED	ACTUAL
Grating	NONE	NONE	Obspar update status	NONE	UPDATED
Data mode	VFAINT	VFAINT	Number of optional ACIS chips dropped	0	0
Observation mode	POINTING	POINTING	On-chip summing requested	N	N
[deg] Pointing RA	239.765112	239.7904438983516	Subarray requested	NONE	NONE
[deg] Pointing Dec	65.230658	65.20556531273948	Alternating exposures requested	N	N
[deg] Pointing Roll	262.034584	262.1682009506831	[s] Primary exposure time	0.000000	3.2
[mm] SIM focus pos	-0.684267	-0.6828225247311905			
[mm] SIM defocus	0	0.001444936568705701			
[mm] SIM translation stage pos	-190.132523	-190.1400660498719			
[mm] SIM translation stage offset	0	0.00754346686406393			
[s] Observation start time (MET)	177577032.184000	177575684.74225			
Observation start date	2003-08-18T06:56:08	2003-08-18T06:34:44			
[s] Observation end time (MET)	177597032.184000	177597683.29319			
Observation end date	2003-08-18T12:29:28	2003-08-18T12:41:23			
Read mode	TIMED	TIMED			

2.3 Aspect



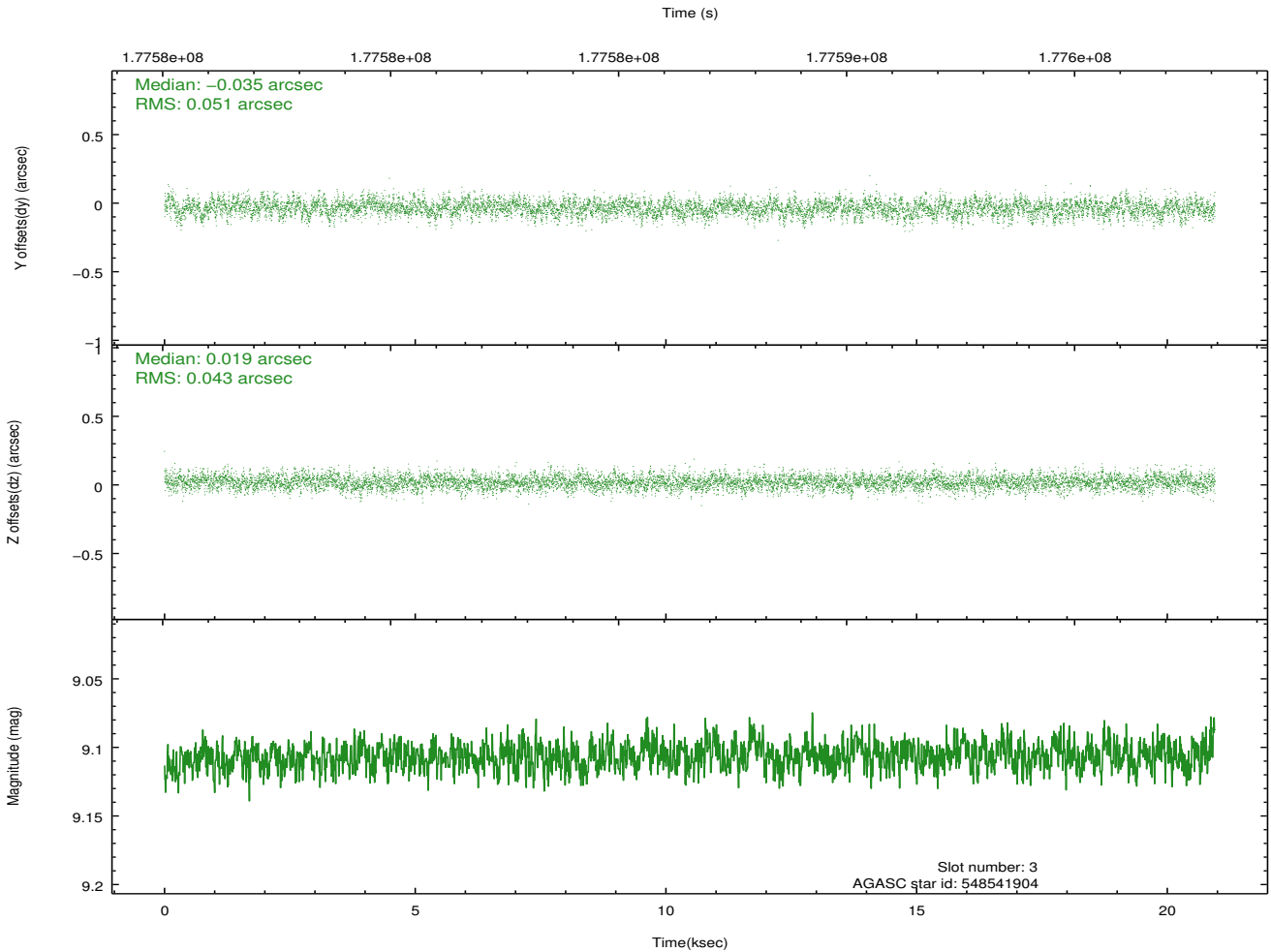
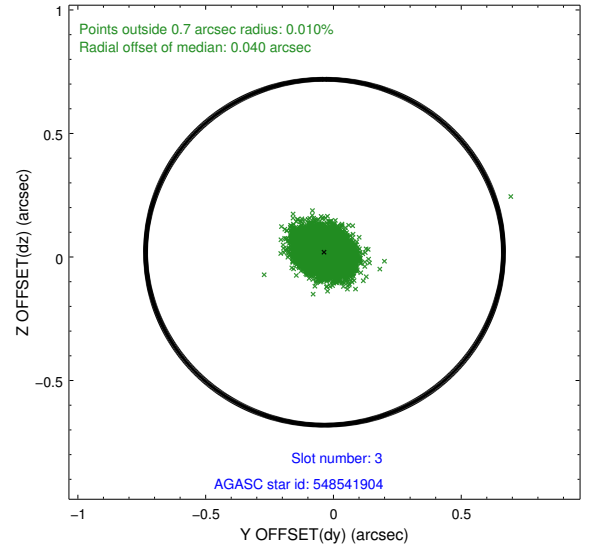
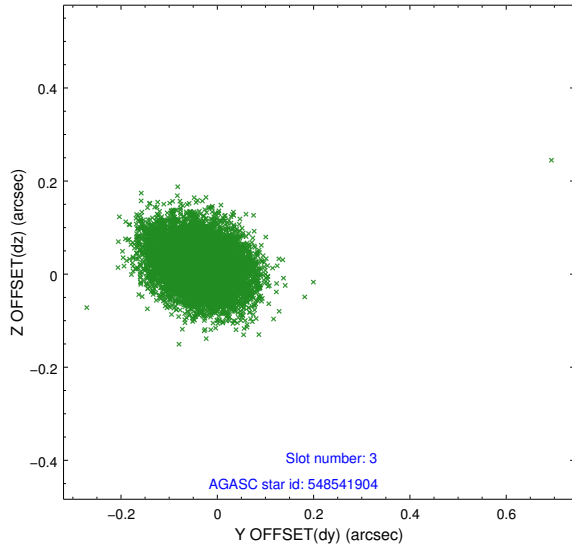


Slot Statistics

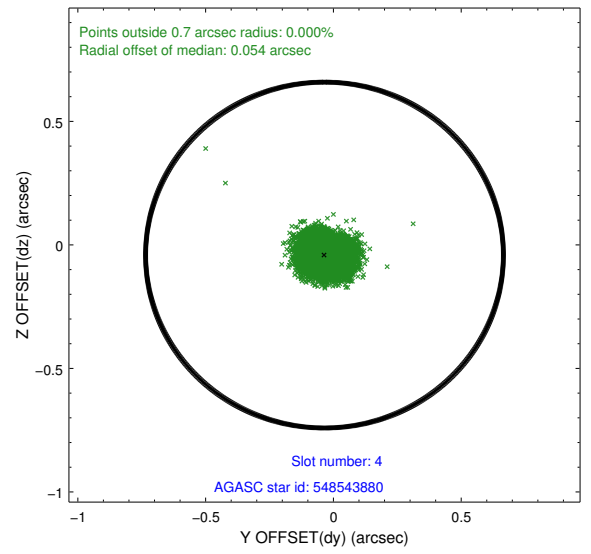
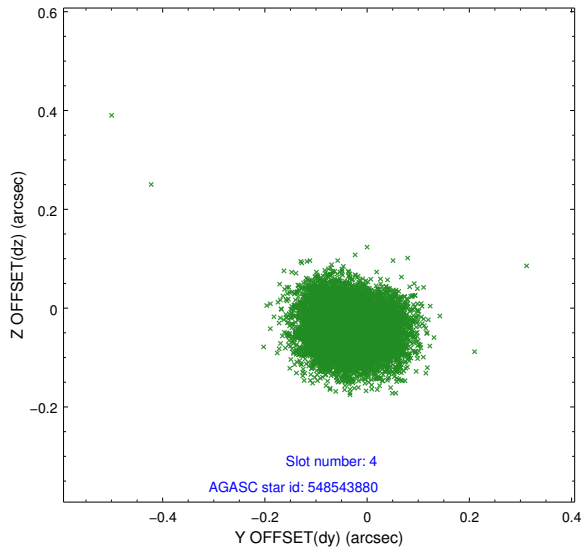
slot	status	id	mag	n_pts	med_dy	med_dz	dr1	dr2	ra	dec	mean_y	mean_z
0	FID	ACIS-S-2	7.10	5111	-0.059	-0.019	0.008	0.013	0.000000	0.000000	-759.45	-1731.68
1	FID	ACIS-S-4	7.20	5111	0.072	0.034	0.006	0.011	0.000000	0.000000	2153.84	176.73
2	FID	ACIS-S-5	7.23	5111	-0.044	-0.006	0.008	0.013	0.000000	0.000000	-1812.10	170.49
3	GUIDE	548541904	9.11	10220	-0.035	0.019	0.069	0.117	238.398030	64.776730	1887.19	-1853.29
4	GUIDE	548543880	8.46	10176	-0.035	-0.041	0.068	0.110	239.907832	64.745157	1700.84	459.29
5	GUIDE	548937368	8.93	10218	0.006	0.044	0.083	0.132	239.417352	65.396683	-519.94	-598.39
6	GUIDE	549849656	9.20	10220	0.015	-0.011	0.078	0.128	240.650889	65.694358	-1844.10	1066.94
7	GUIDE	548541064	9.36	10217	0.043	-0.014	0.098	0.159	238.050198	64.948429	1334.22	-2452.34

2.4 Star Slots

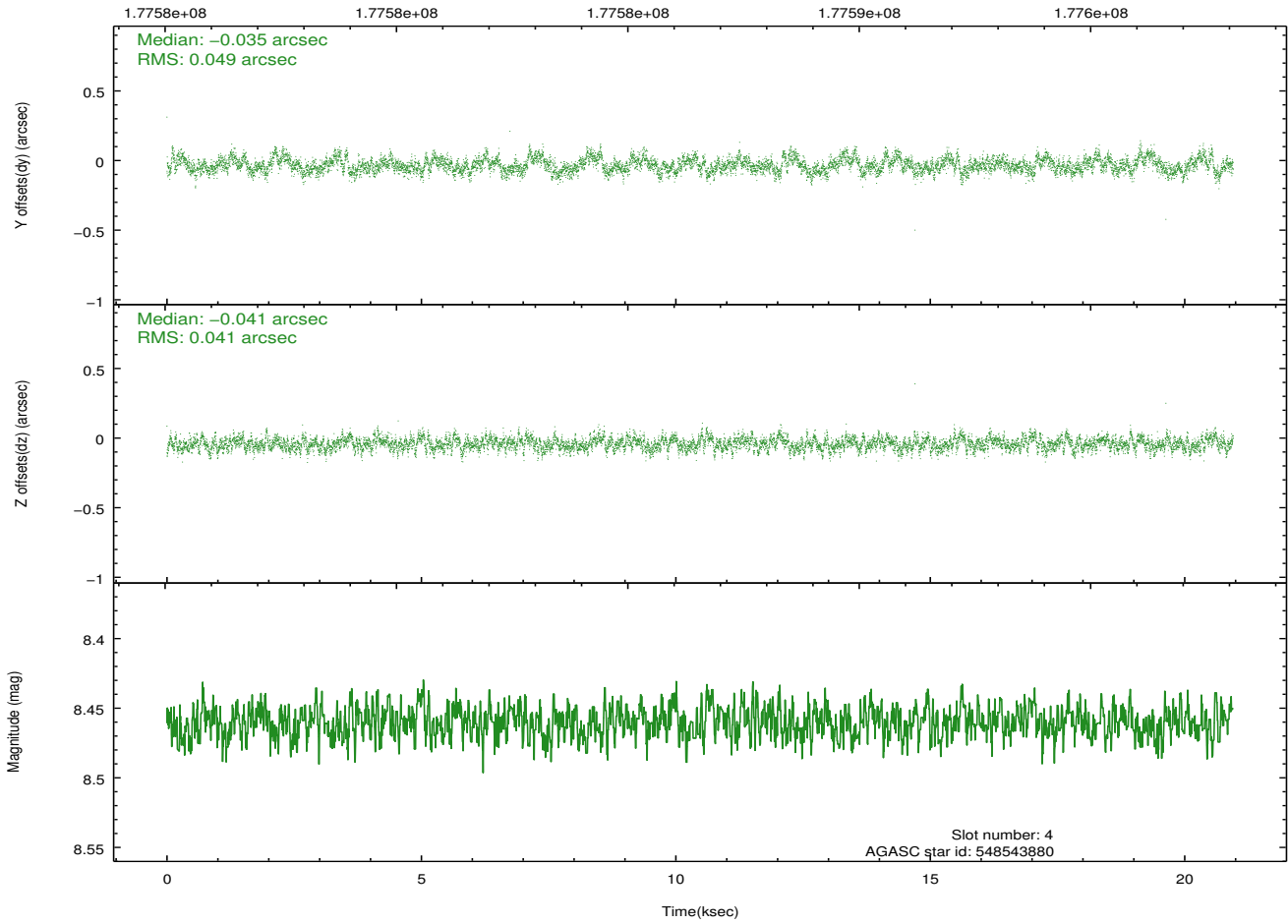
2.4.1 Slot 3



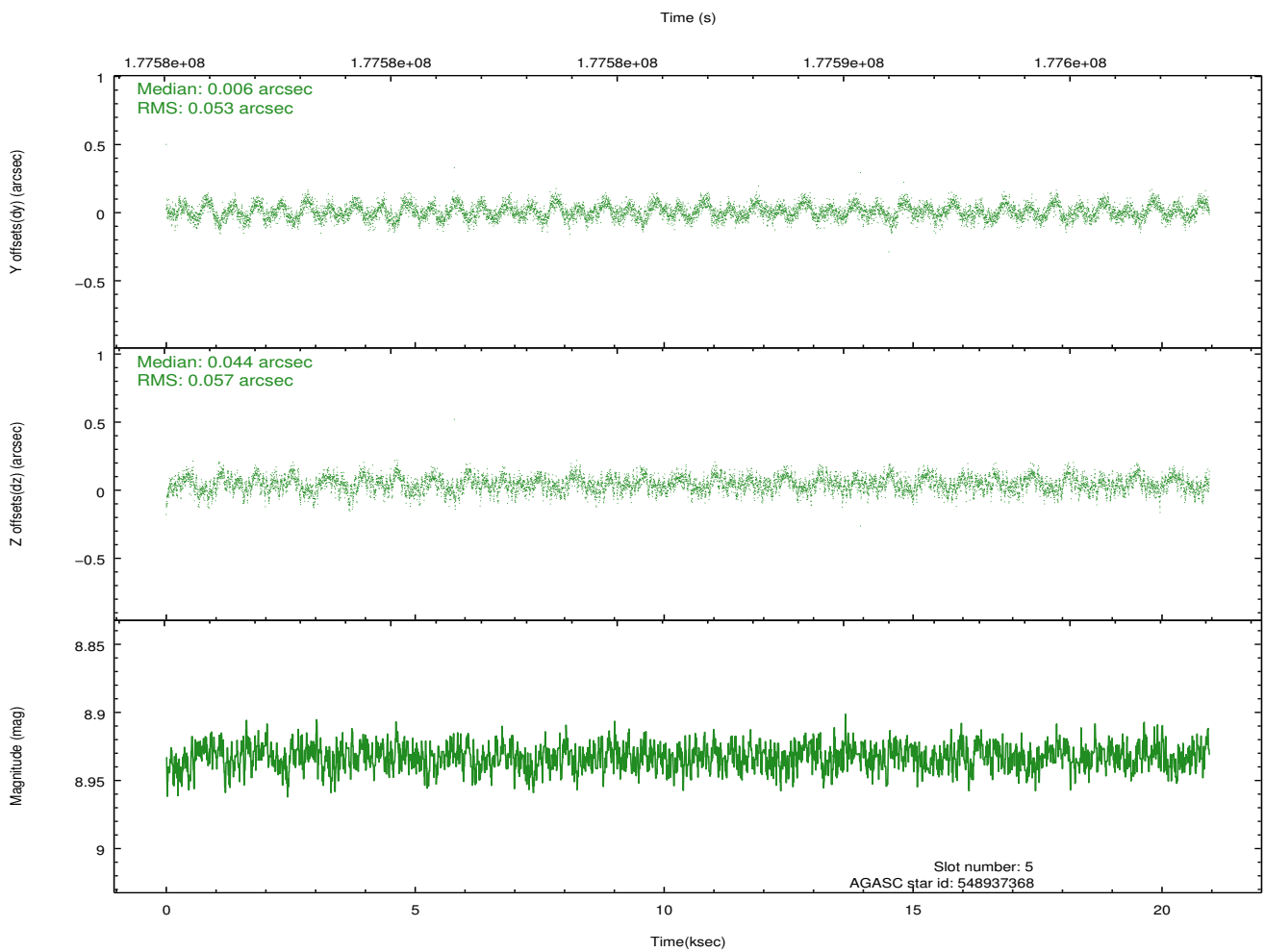
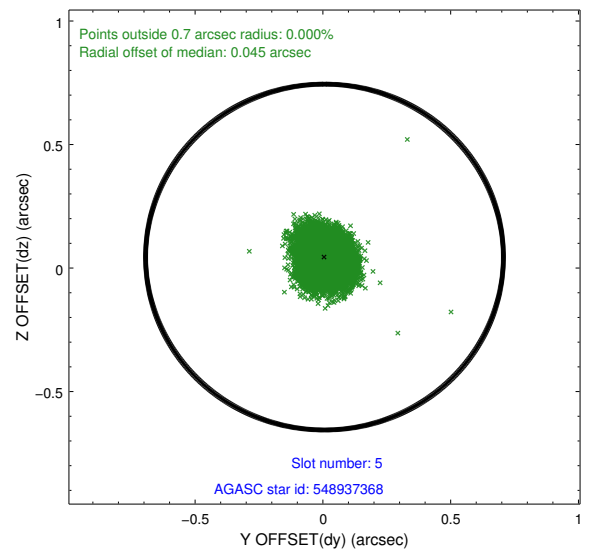
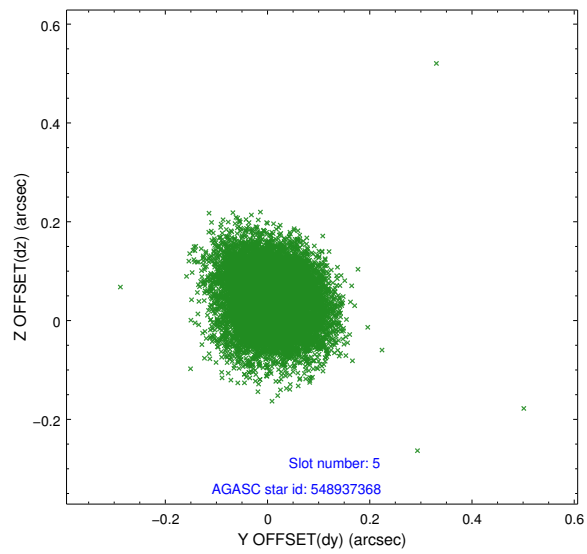
2.4.2 Slot 4



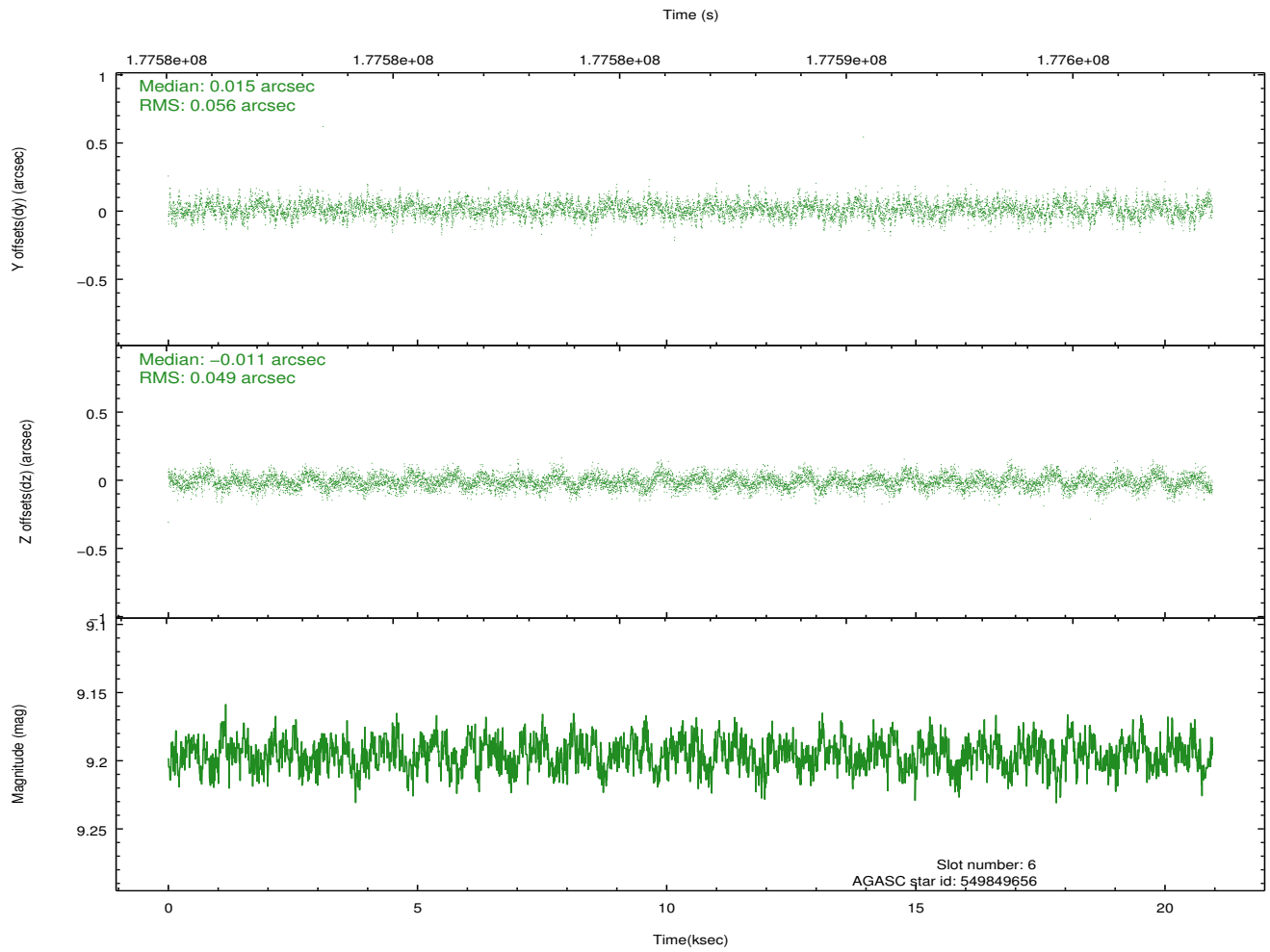
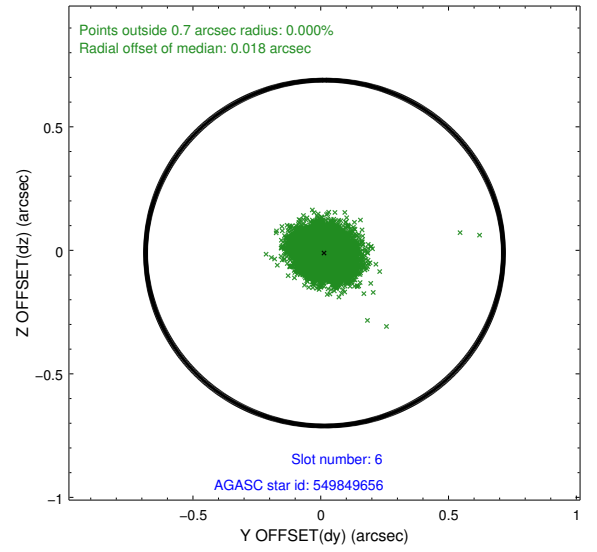
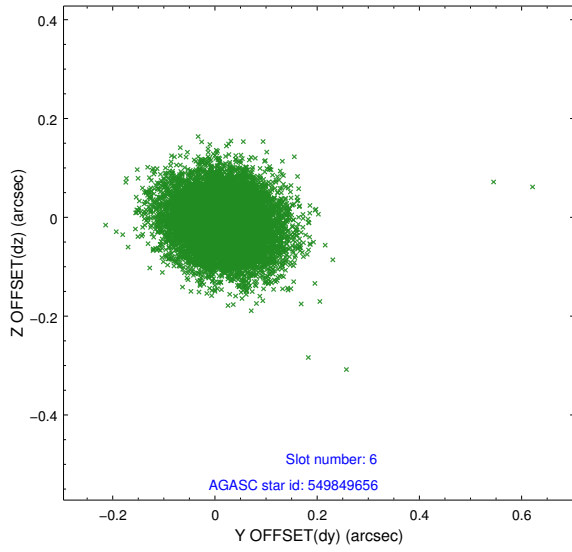
Time (s)



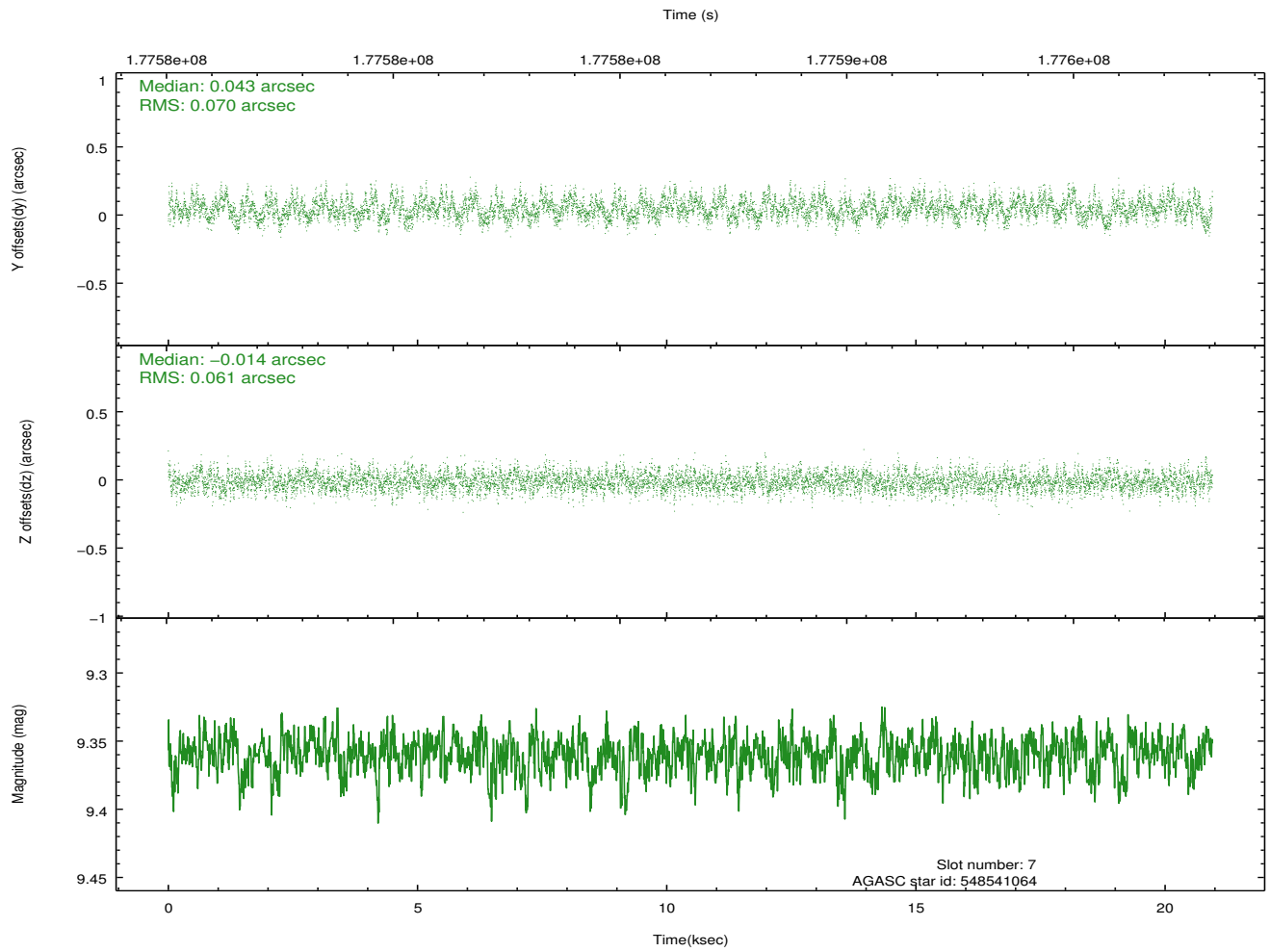
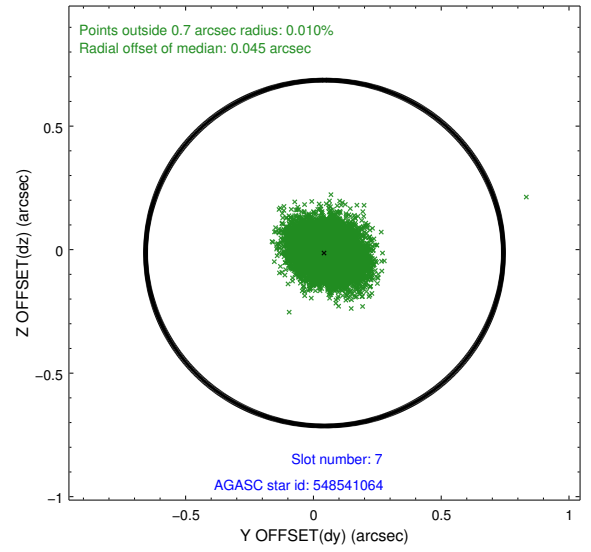
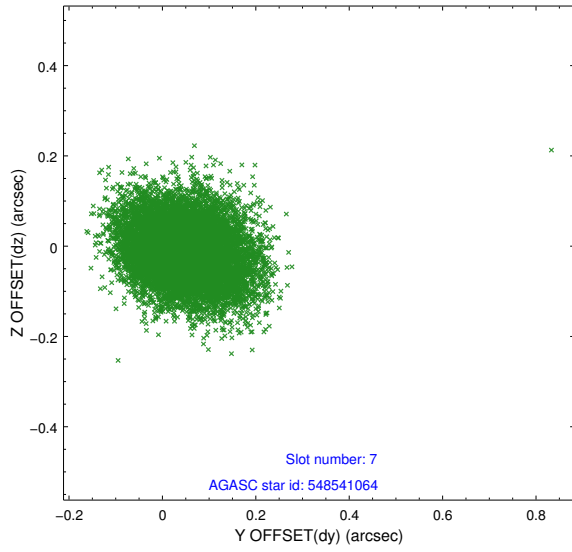
2.4.3 Slot 5



2.4.4 Slot 6

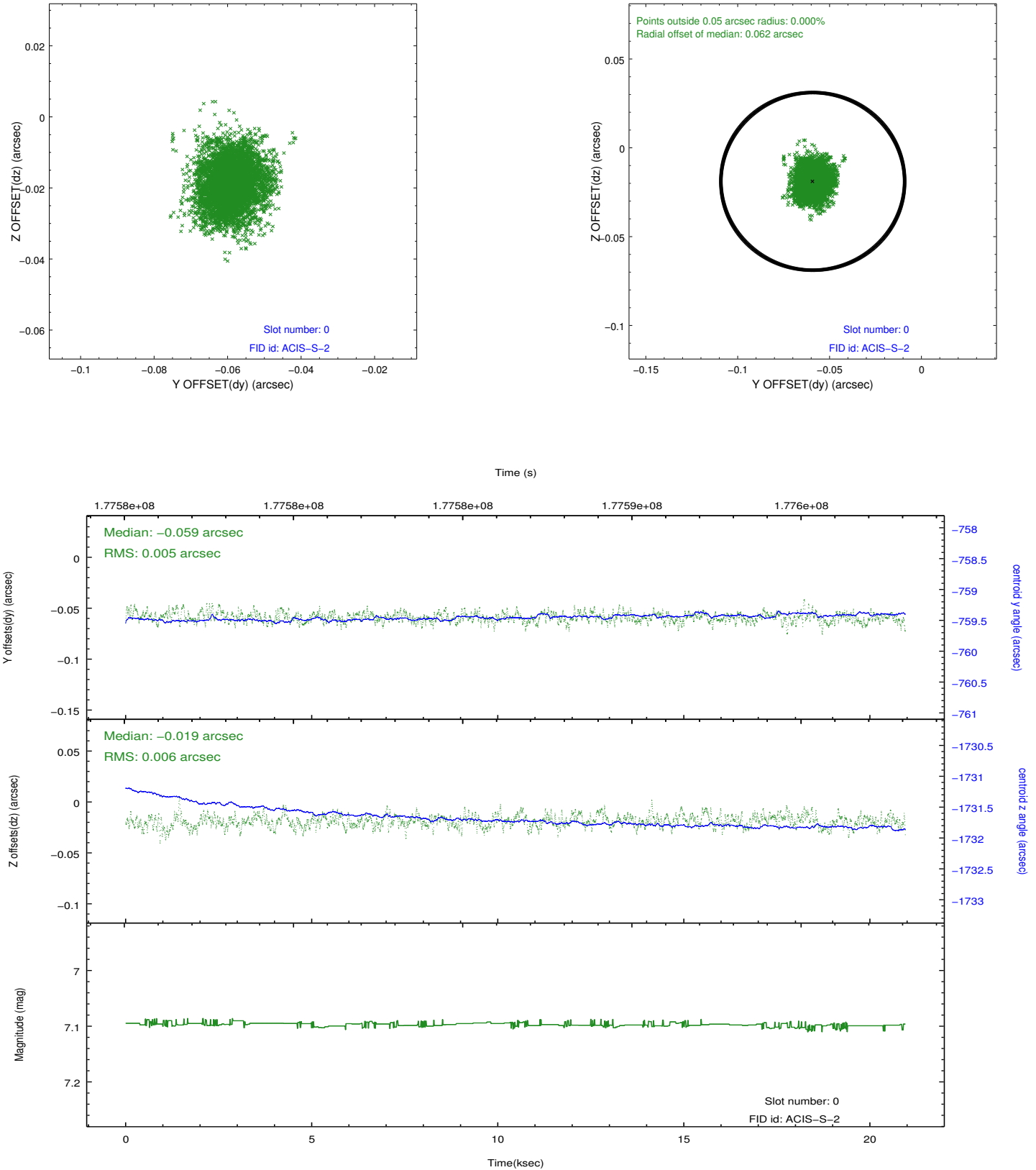


2.4.5 Slot 7

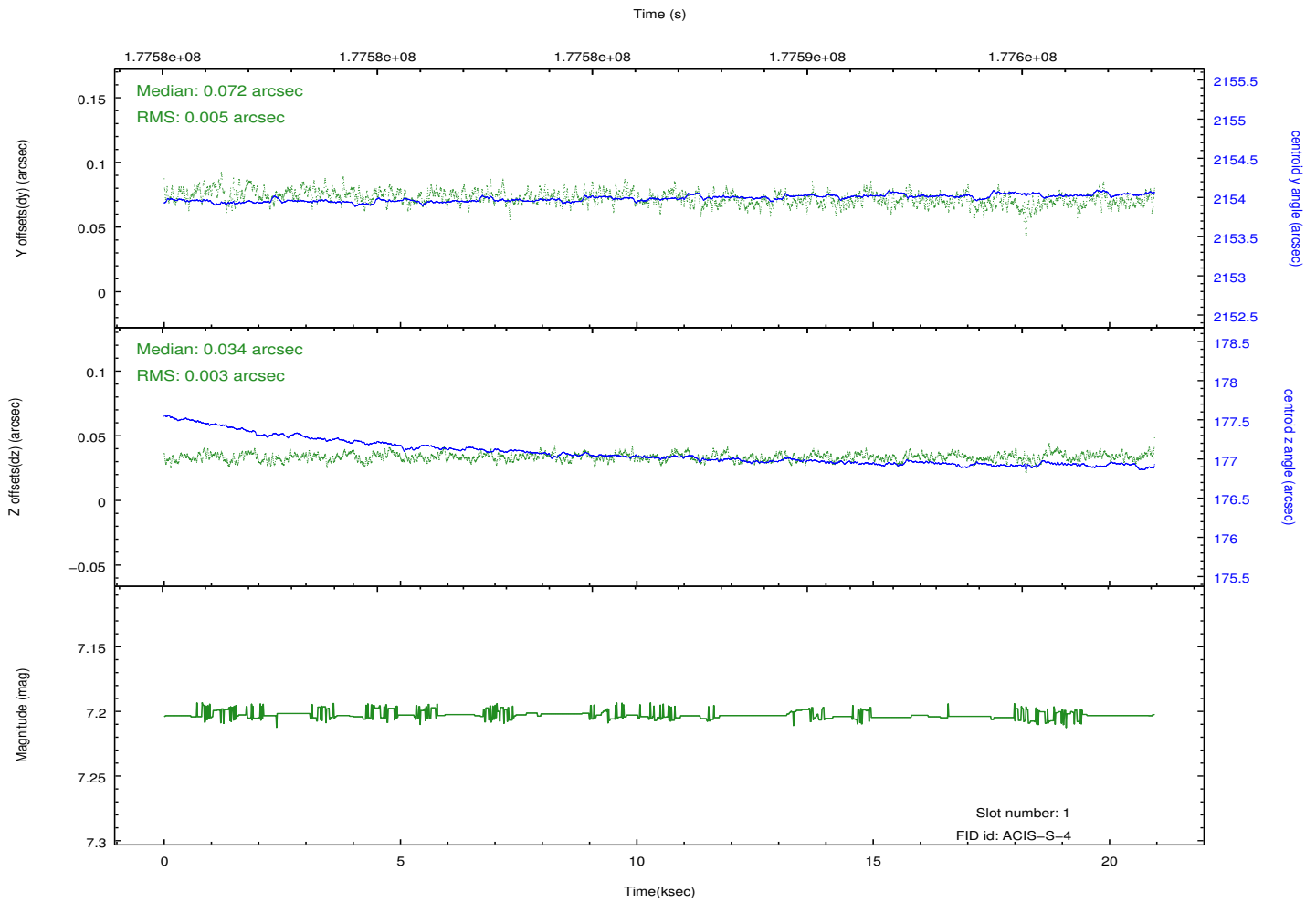
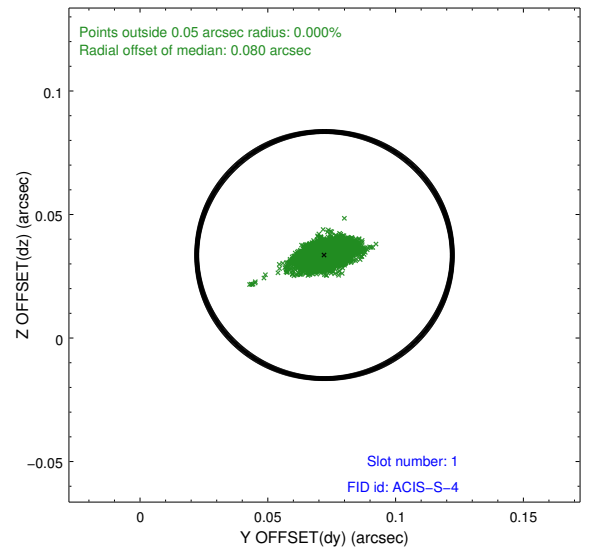
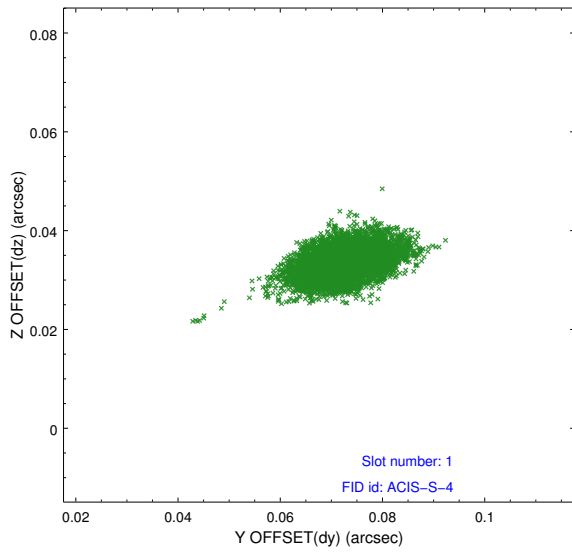


2.5 FID Slots

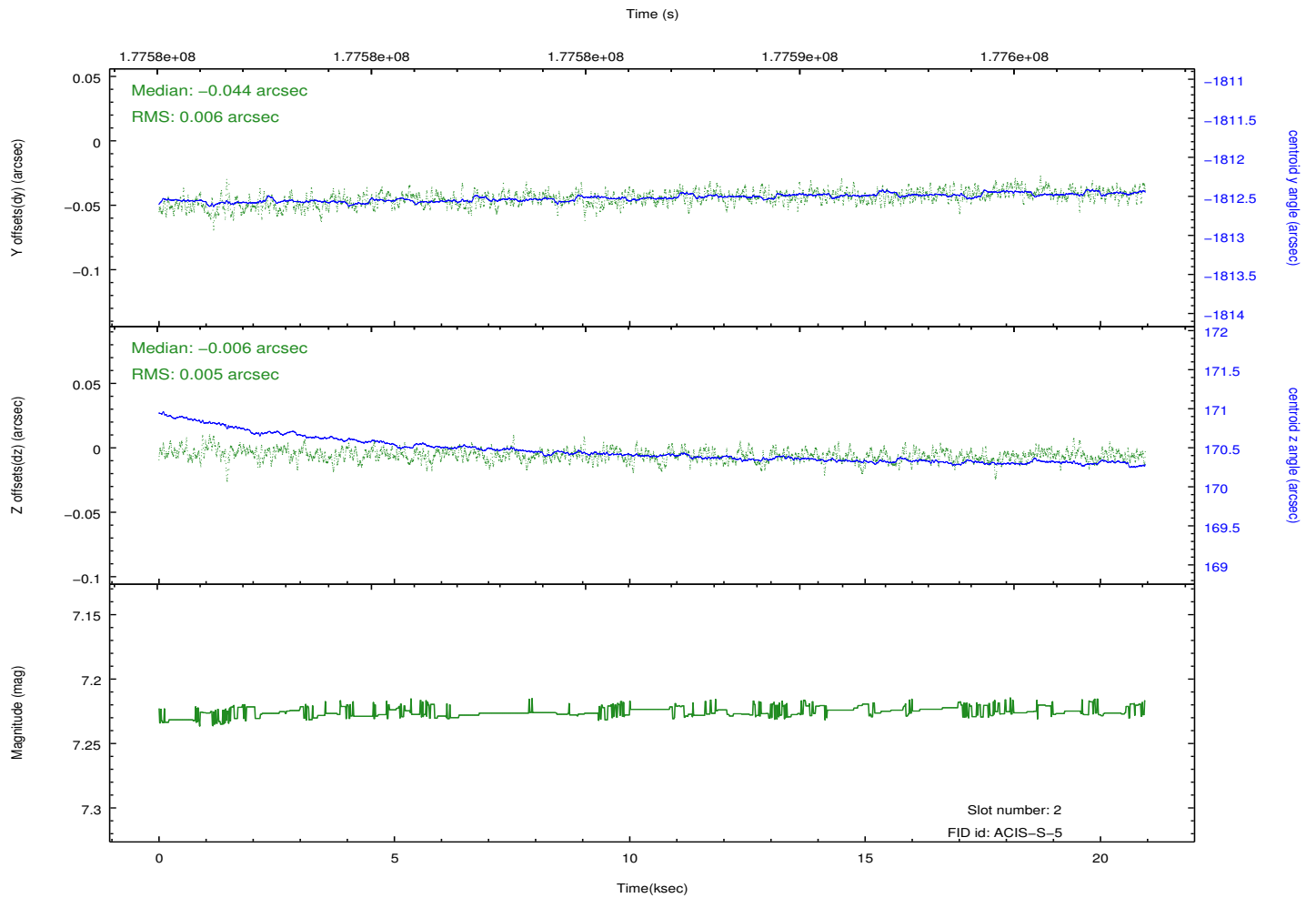
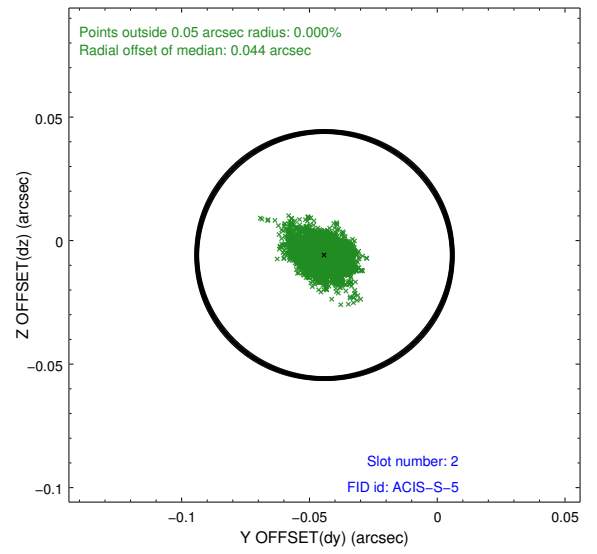
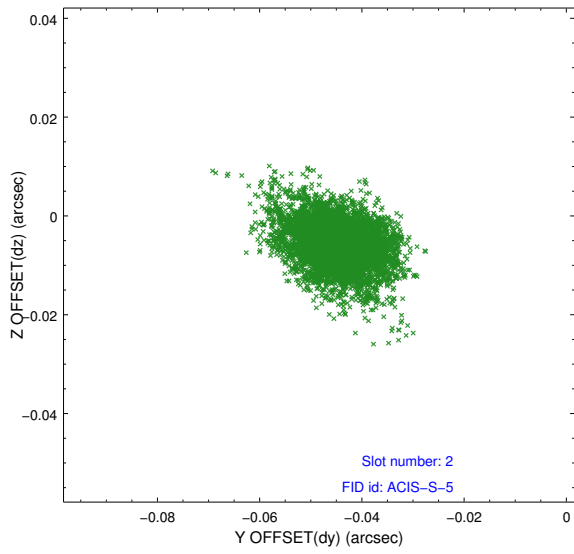
2.5.1 Slot 0



2.5.2 Slot 1



2.5.3 Slot 2



A Summary

A.1 Status

V&V Scientist	Jen Lauer
V&V Date (YYYY-MM-DD)	2012.11.28
V&V Edition	1
V&V Disposition and Status	OK
V&V Charge Time	19.964

A.2 Comments