

V&V Reference Report

L2 ASCDS Version : 8.4.5

Observation 437 - L2 Version 6
Chandra X-Ray Center

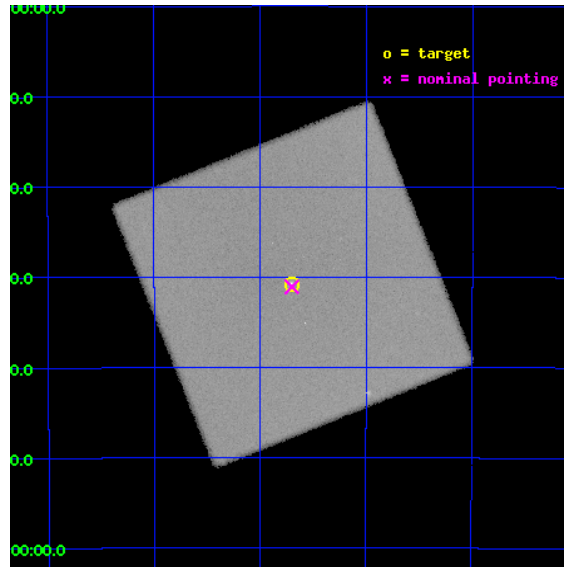
L2 Processing Date : Aug 22 2012

Contents

1	Front	2
2	OBI	3
2.1	OBI	3
2.1.1	Images	3
2.1.2	Parameters	4
2.1.3	Events	4
2.2	Compared Parameters	5
2.3	Aspect	6
2.4	Star Slots	9
2.4.1	Slot 3	9
2.4.2	Slot 4	10
2.4.3	Slot 5	11
2.4.4	Slot 6	12
2.4.5	Slot 7	13
2.5	FID Slots	14
2.5.1	Slot 0	14
2.5.2	Slot 1	15
2.5.3	Slot 2	16
A	Summary	17
A.1	Status	17
A.2	Comments	17

1 Front

seq_num	700109	Sequence number
obs_id	437	Observation id
title	STUDIES OF STARBURST GALAXIES	Proposal title
observer	Dr. Stephen Murray	Principal investigator
object	NGC 1808	Source name
ra_targ	76.925	Observer's specified target RA [deg]
dec_targ	-37.513333	Observer's specified target Dec [deg]
ra_nom	76.925044576069	Nominal RA [deg]
dec_nom	-37.517939658127	Nominal Dec [deg]
roll_nom	293.15729995764	Nominal Roll [deg]
revision	6	Processing version of data
ontime	30486.832361639	[s]
livetime	30128.499084019	Ontime multiplied by DTCOR
l2events	1101408	Number of level 2 events

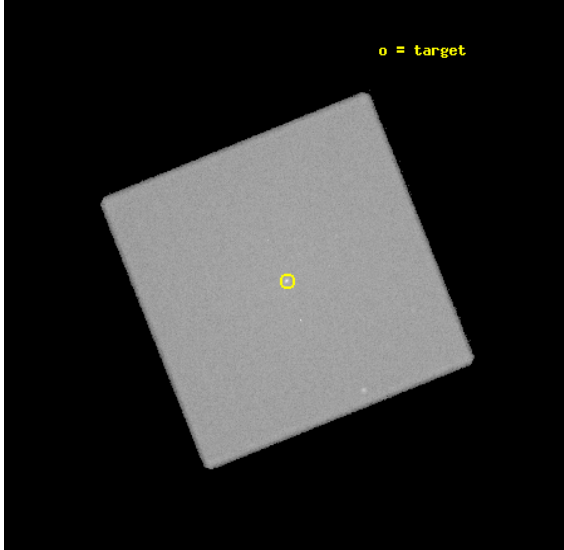


2 OBI

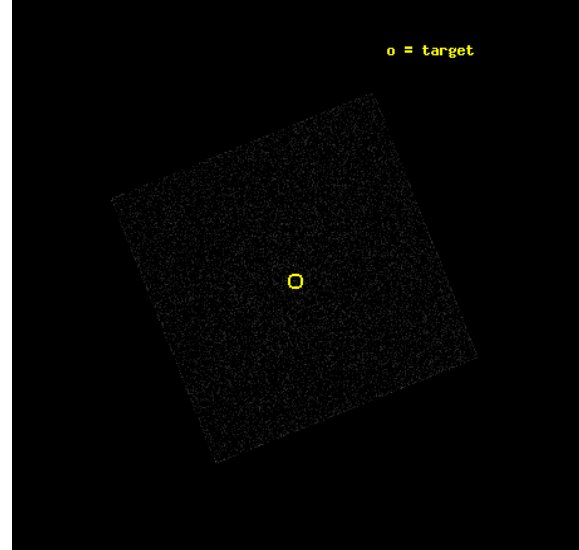
2.1 OBI

2.1.1 Images

Level 1 Image



Level 1 Bad Events



2.1.2 Parameters

obi_num	0	Obi number	sched_exp_time	30000.000000	[s] Scheduled observation exposure time
ascdsver	8.4.5	Processing system revision	ontime	30486.832361639	[s]
caldsver	4.5.1.1	 	l1events	1715780	Number of level 1 events
date	2012-08-22T14:06:09	Date and time of file creation			
revision	6	Processing version of data			

2.1.3 Events

Level 1 Events

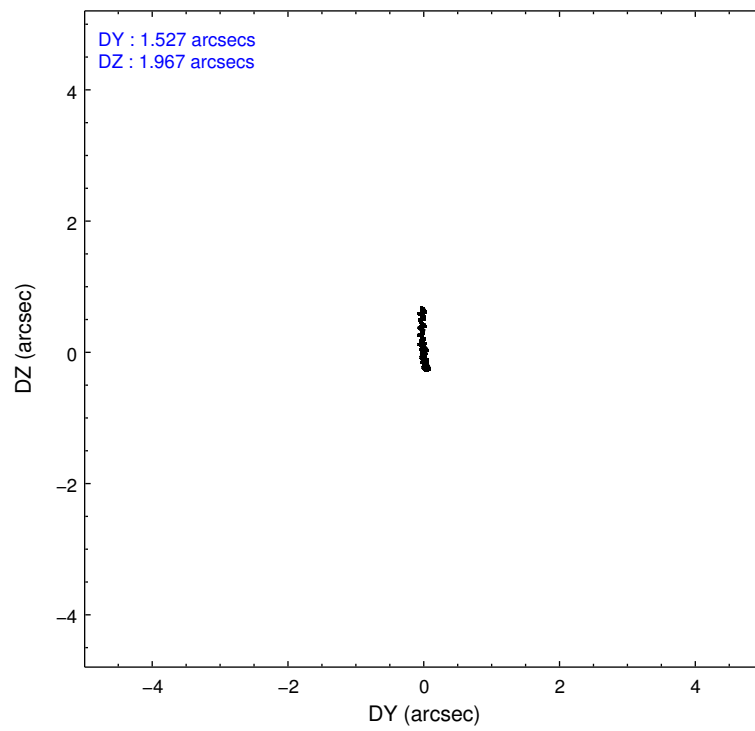
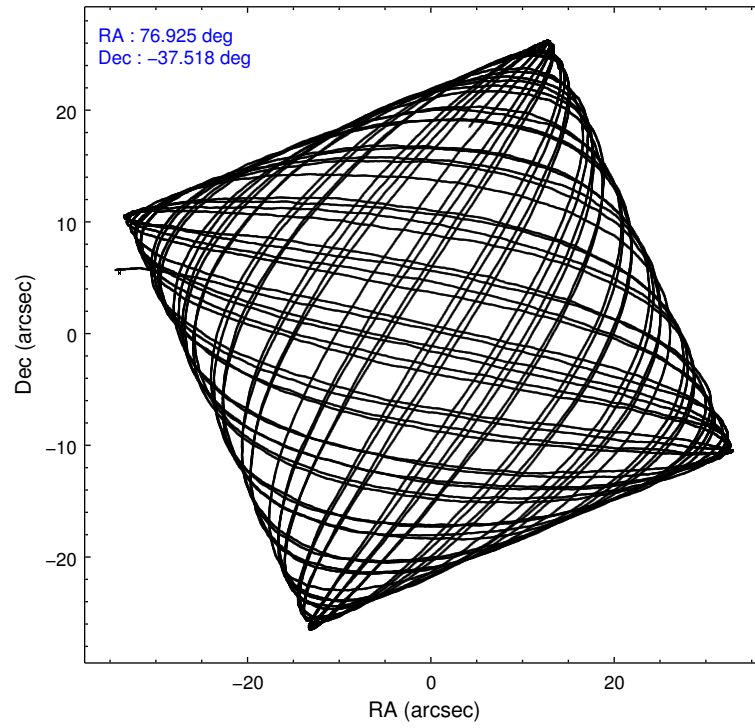
	segment 0
level 1 events	1715780
rejected events	58311
rejected %	3%

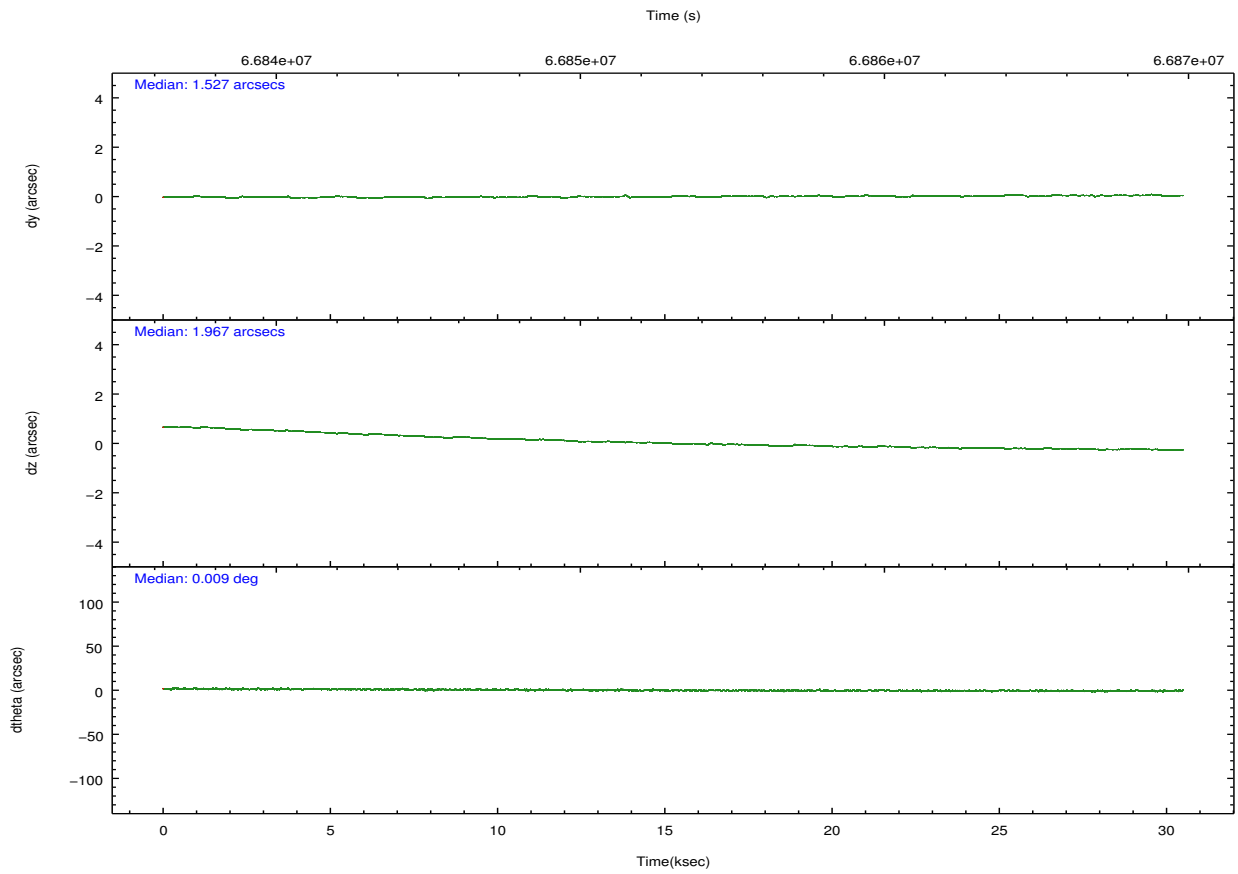
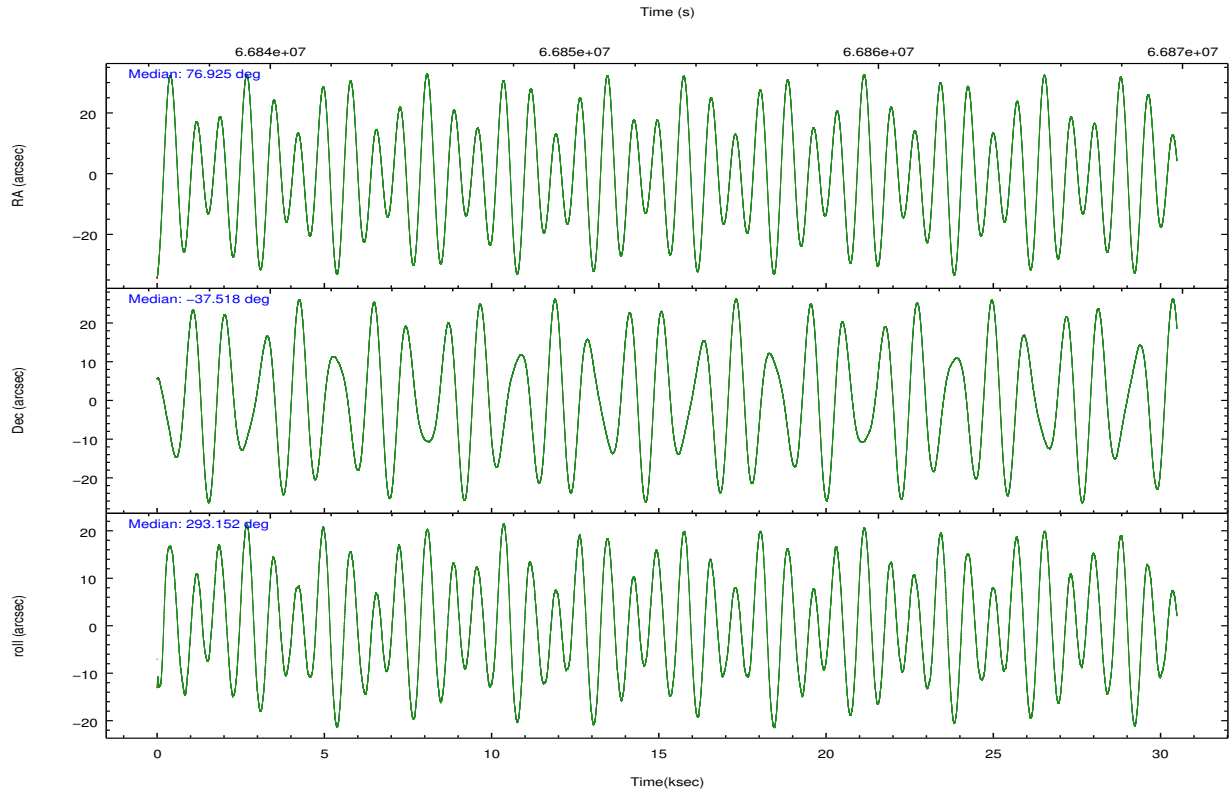
2.2 Compared Parameters

Parameter	Planned	Actual
Instrument	HRC	HRC
Detector	HRC-I	HRC-I
Grating	NONE	NONE
Data mode	OBSERVING	OBSERVING
Observation mode	POINTING	POINTING
[deg] Pointing RA	76.897232	76.9250445760689
[deg] Pointing Dec	-37.501755	-37.51793965812693
[deg] Pointing Roll	293.235849	293.1572999576383
[mm] SIM focus pos	-1.040293	-1.038866356238299
[mm] SIM defocus	0	0.001426264420575141
[mm] SIM translation stage pos	126.985494	126.9854943052878
[mm] SIM translation stage offset	0	-5.413686238853188e-06
[s] Observation start time (MET)	66838295.184000	66837417.547274
Observation start date	2000-02-13T14:10:31	2000-02-13T13:56:57
[s] Observation end time (MET)	66868295.184000	66869239.698434
Observation end date	2000-02-13T22:30:31	2000-02-13T22:47:19

Parameter	Planned	Actual
Obspar format version number	7	7
Obspar file type	PREDICTED	ACTUAL
Obspar update status	NONE	UPDATED

2.3 Aspect



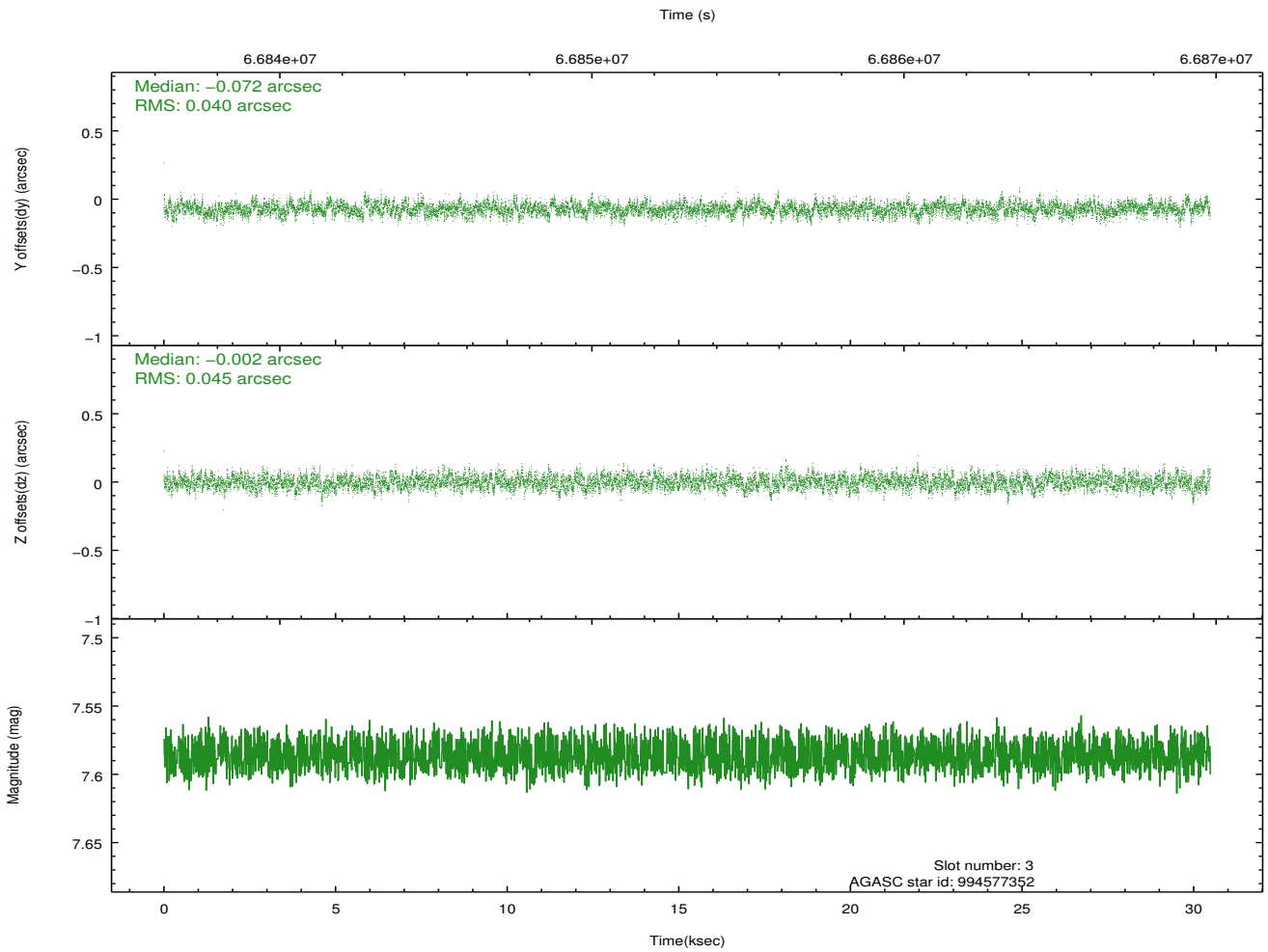
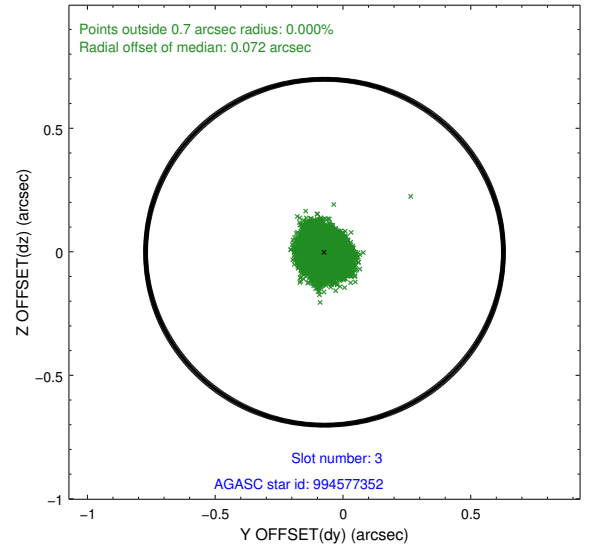
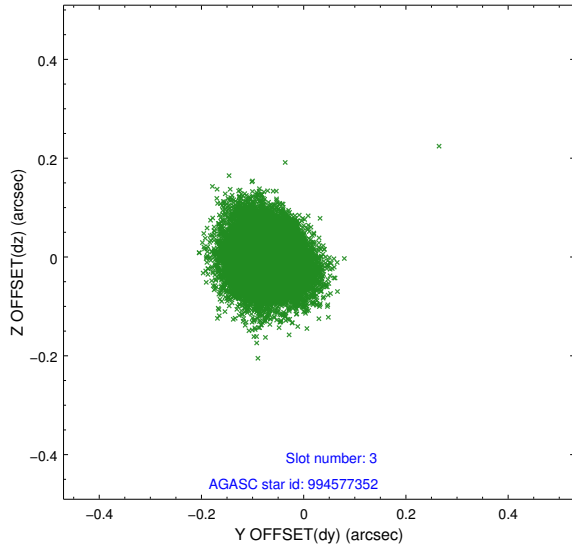


Slot Statistics

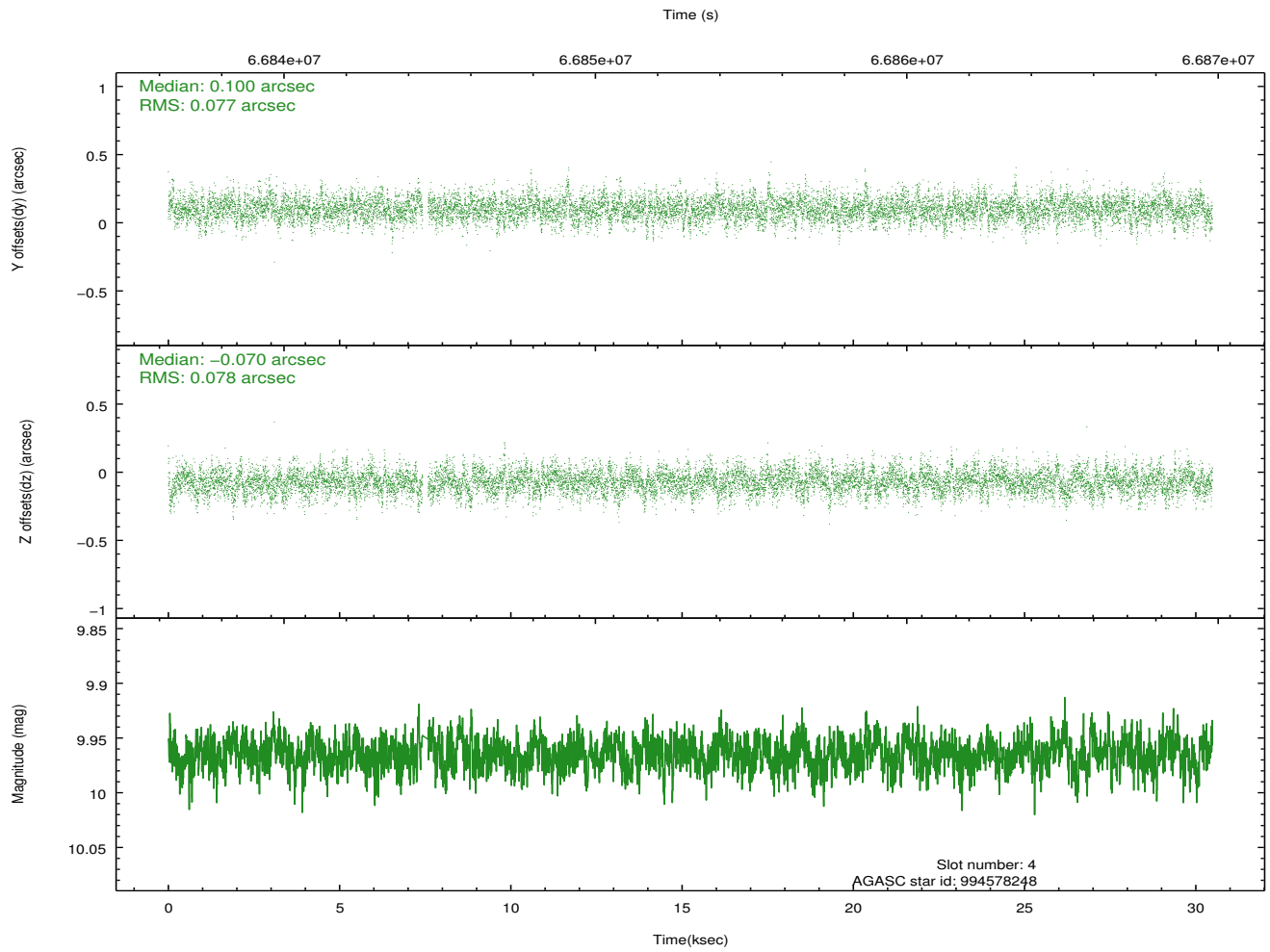
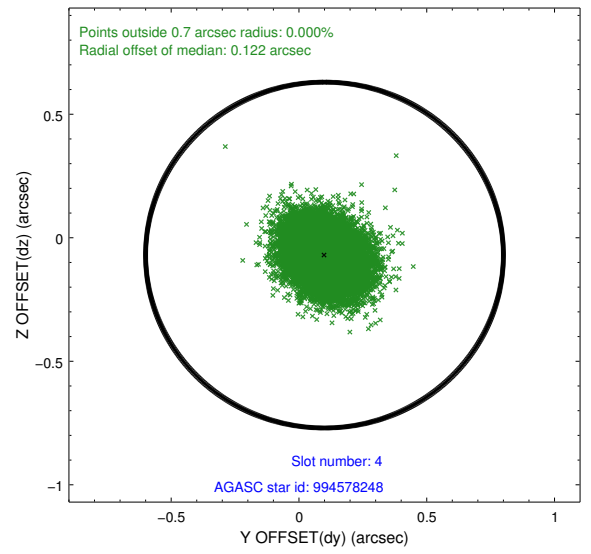
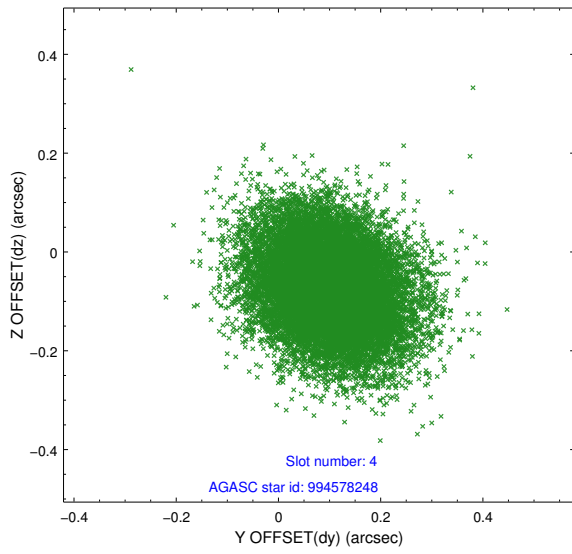
slot	status	id	mag	n_pts	med_dy	med_dz	dr1	dr2	ra	dec	mean_y	mean_z
0	FID	HRC-I-1	6.95	7437	0.045	-0.021	0.012	0.023	0.000000	0.000000	-756.94	-1289.81
1	FID	HRC-I-3	7.03	7437	0.037	-0.030	0.007	0.012	0.000000	0.000000	-1185.50	1014.57
2	FID	HRC-I-4	6.98	7437	0.032	-0.038	0.012	0.021	0.000000	0.000000	1285.71	1012.44
3	GUIDE	994577352	7.59	14872	-0.072	-0.002	0.064	0.102	76.775696	-37.700448	521.24	-600.56
4	GUIDE	994578248	9.96	14777	0.100	-0.070	0.115	0.191	77.105047	-37.612128	599.88	387.27
5	GUIDE	994444776	10.16	14859	-0.019	-0.034	0.155	0.273	76.171585	-37.837852	305.80	-2376.42
6	GUIDE	994576064	9.30	14860	0.036	0.127	0.083	0.137	77.706746	-37.817524	1962.24	1663.01
7	GUIDE	924460688	9.71	14865	-0.046	-0.018	0.099	0.170	76.282167	-37.143685	-1875.03	-1115.88

2.4 Star Slots

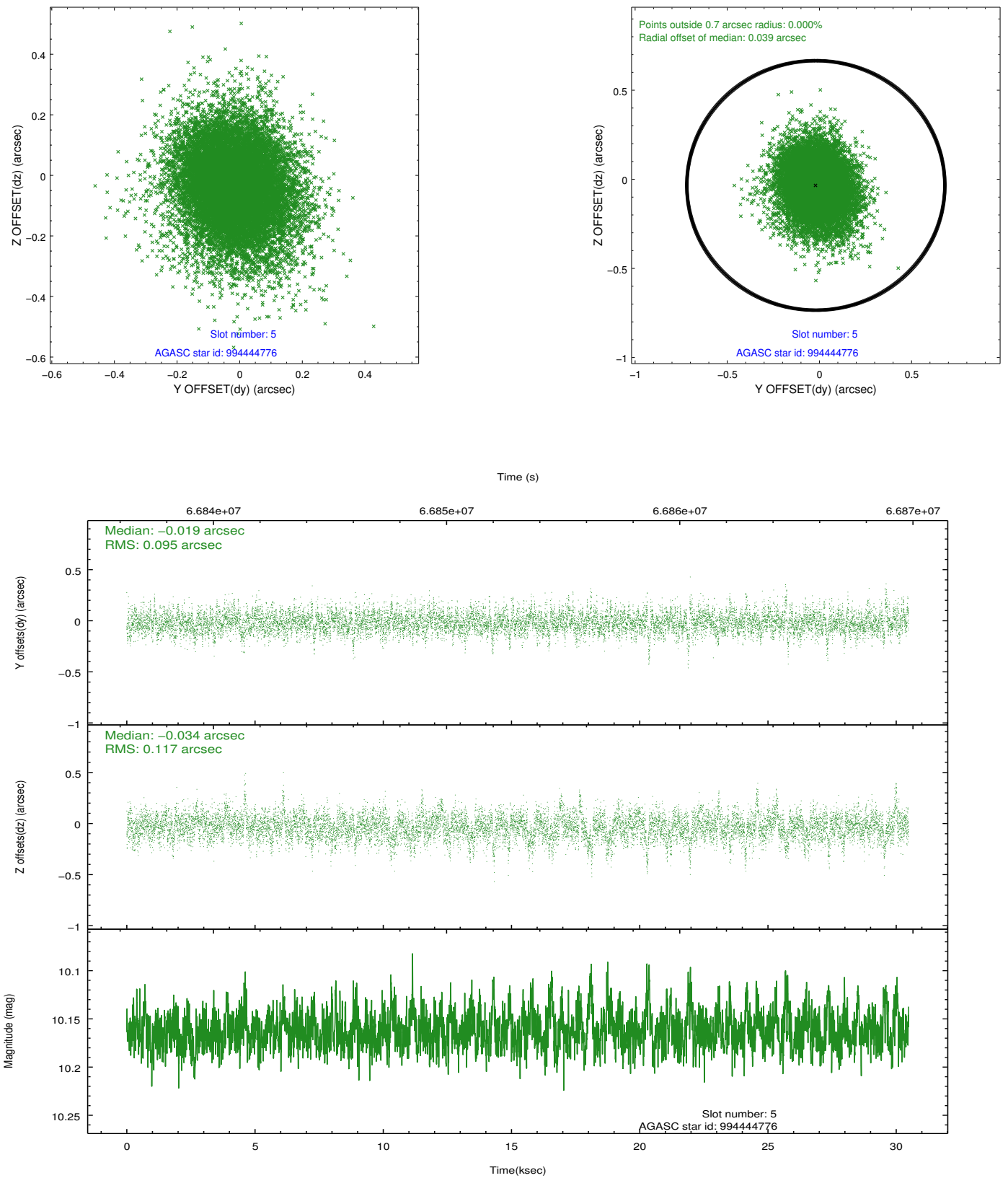
2.4.1 Slot 3



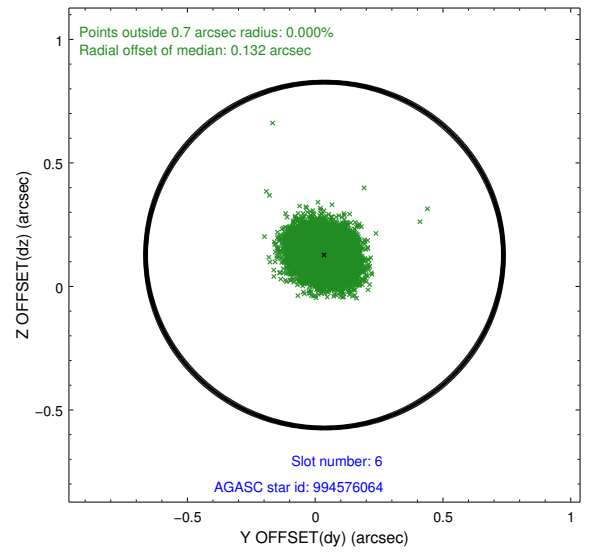
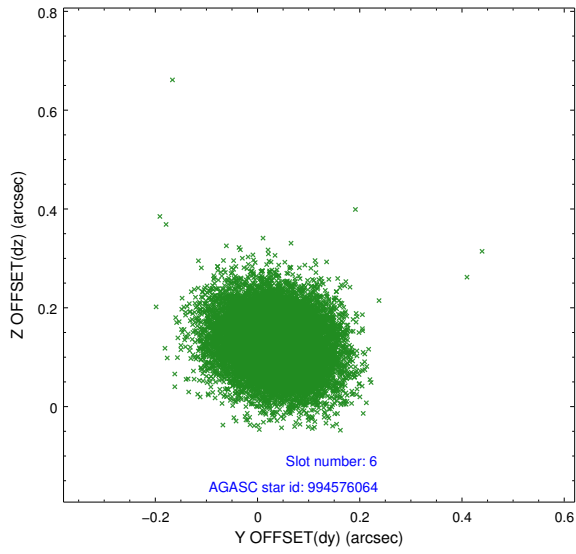
2.4.2 Slot 4



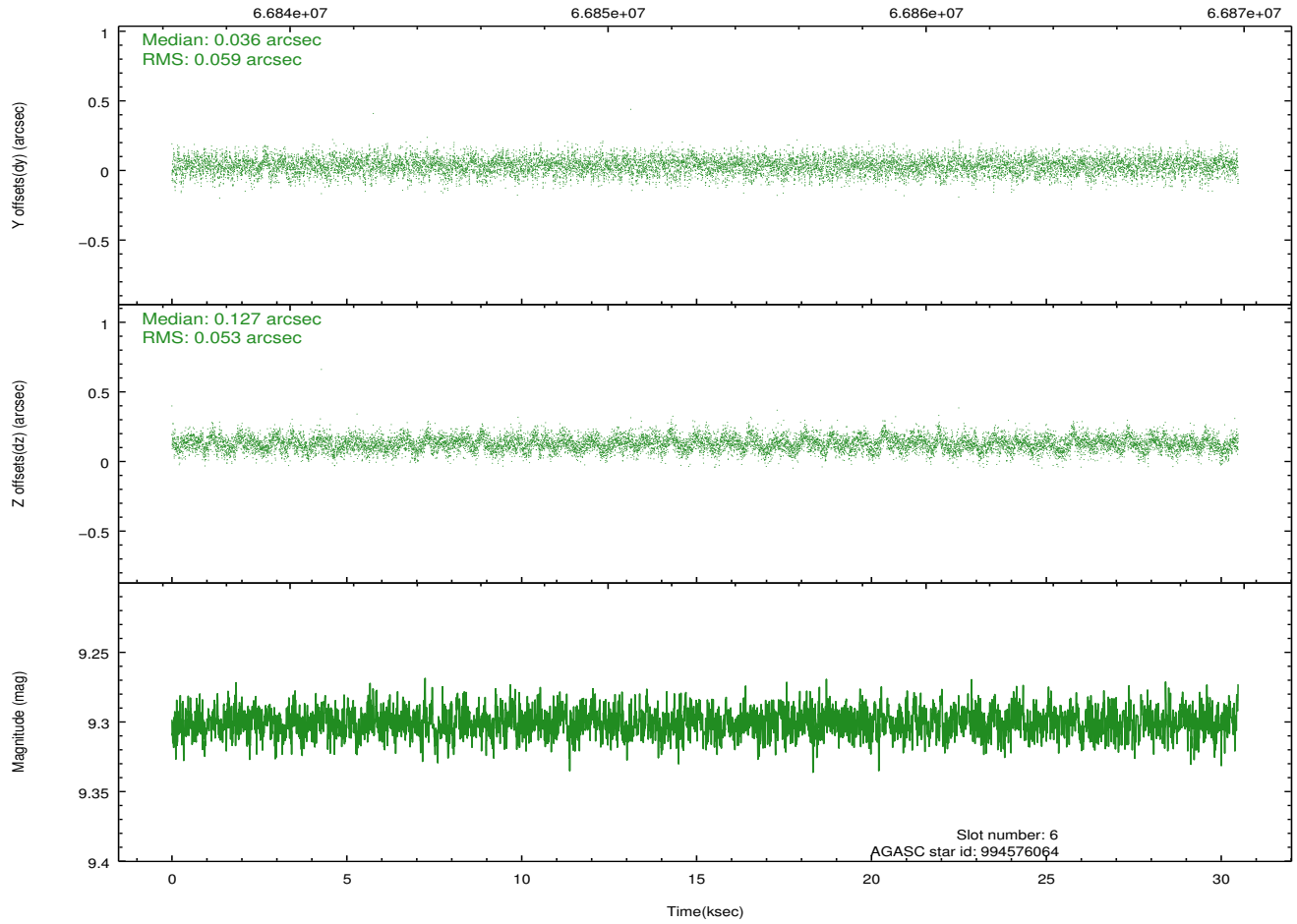
2.4.3 Slot 5



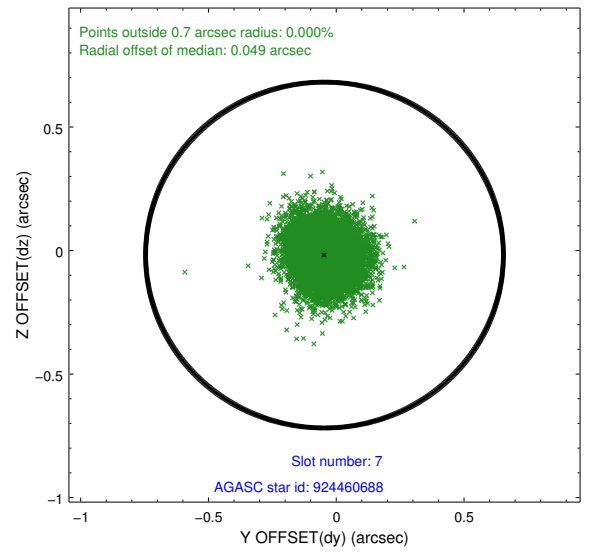
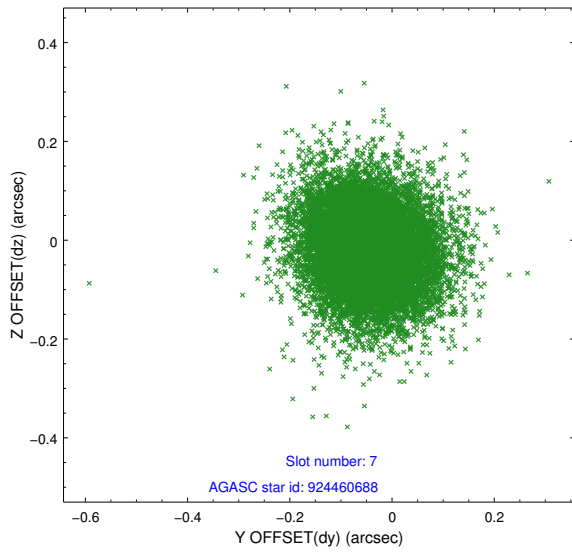
2.4.4 Slot 6



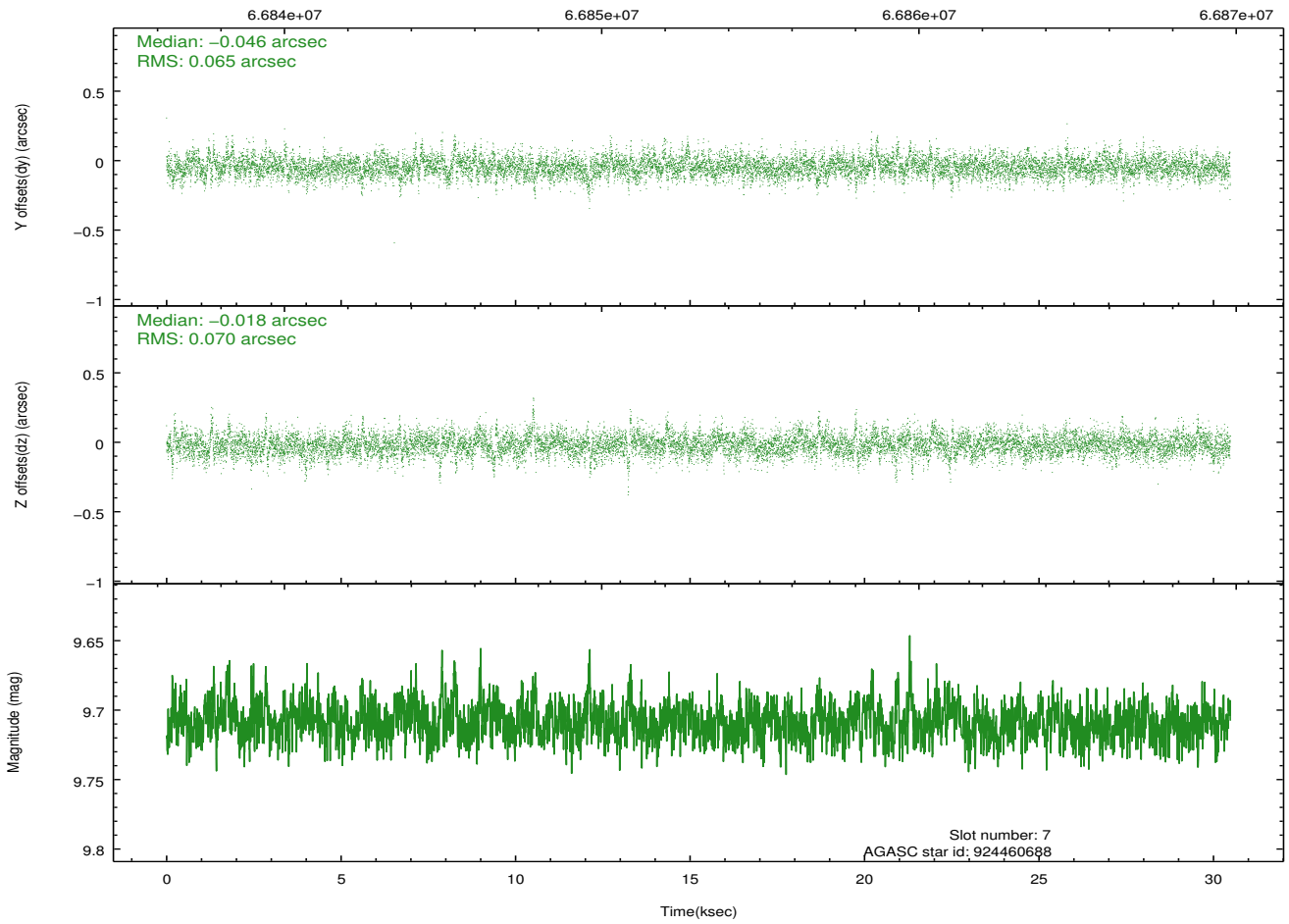
Time (s)



2.4.5 Slot 7

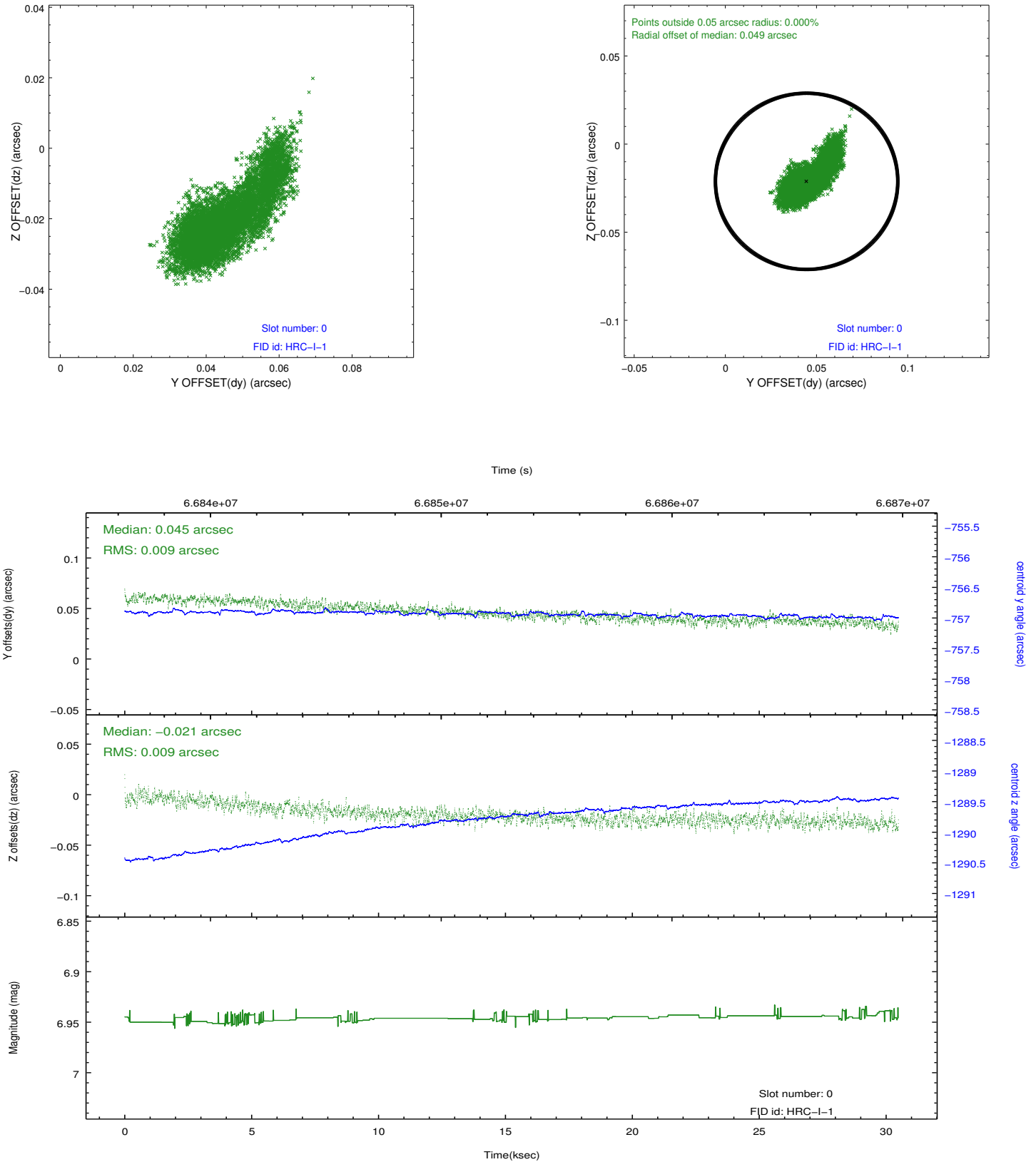


Time (s)

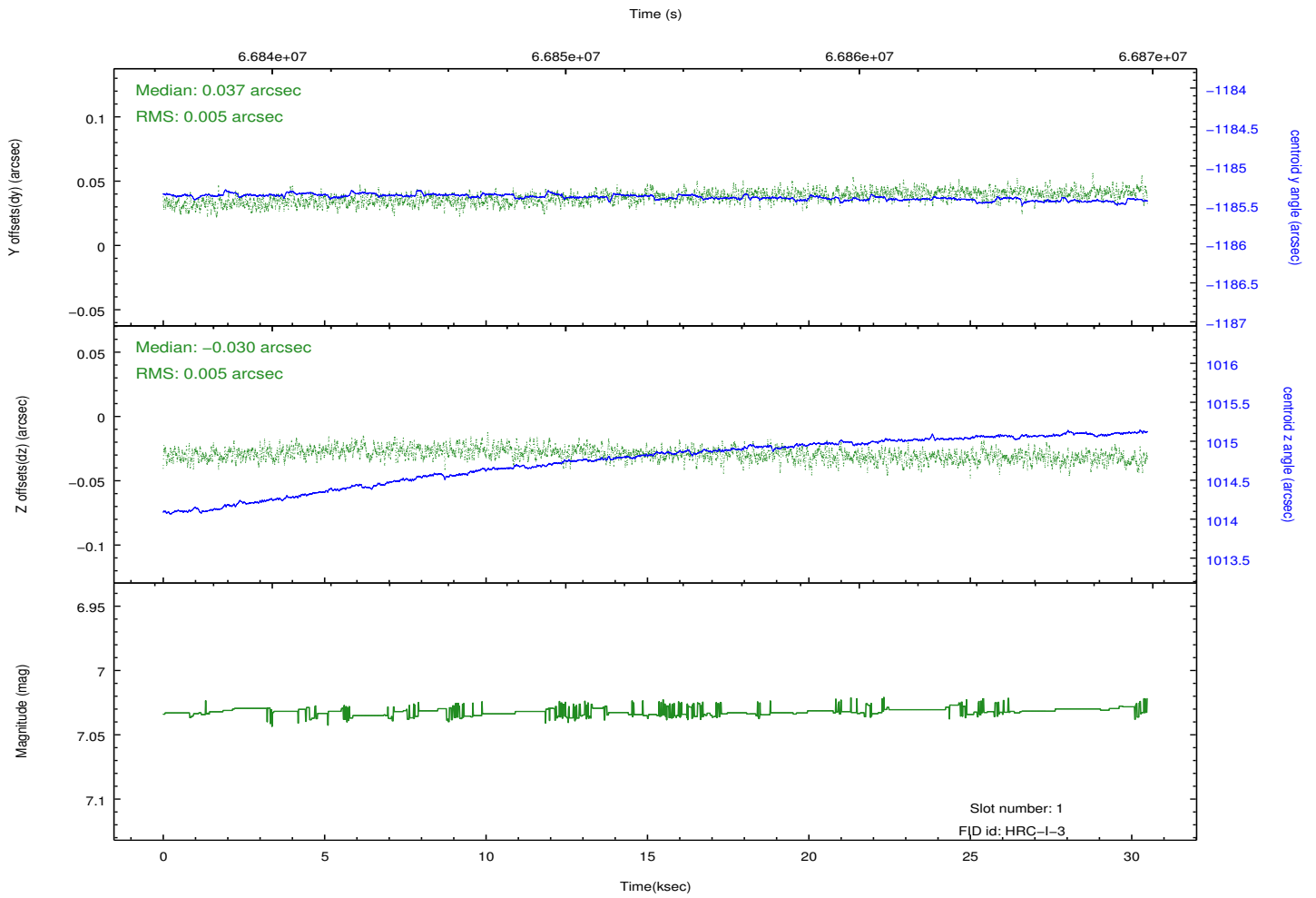
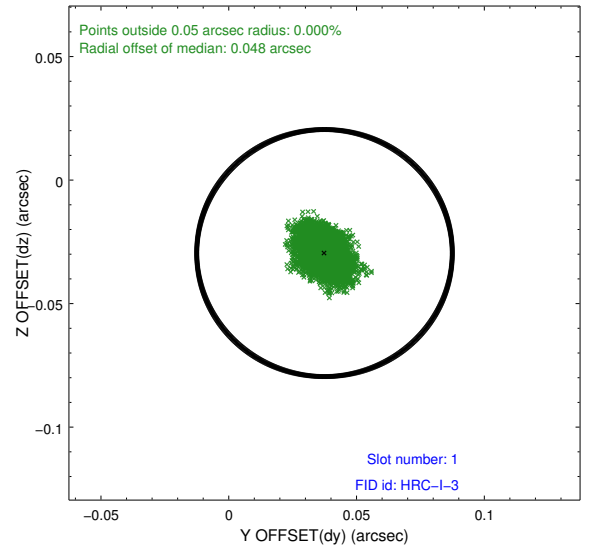
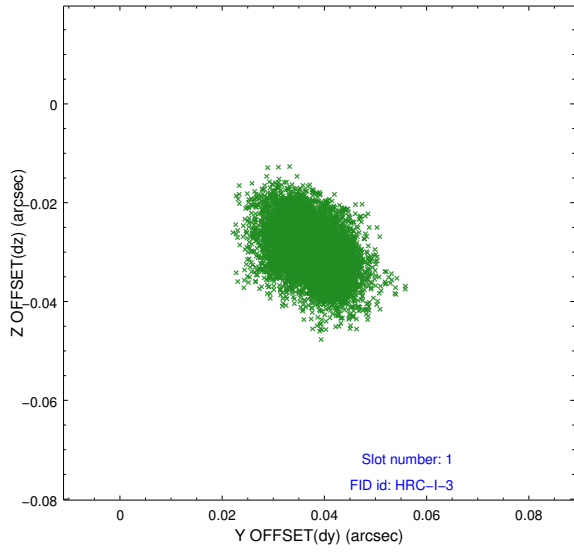


2.5 FID Slots

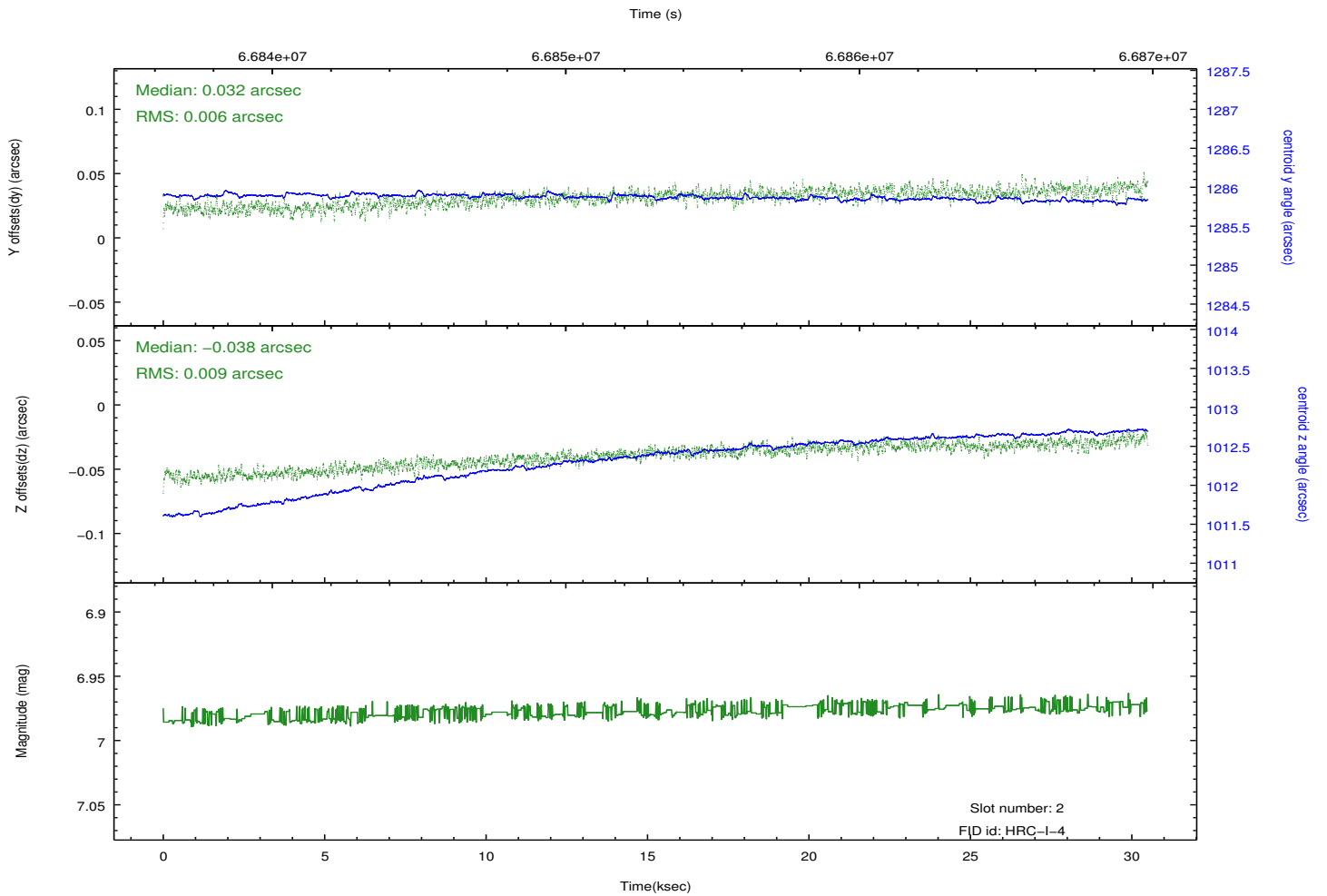
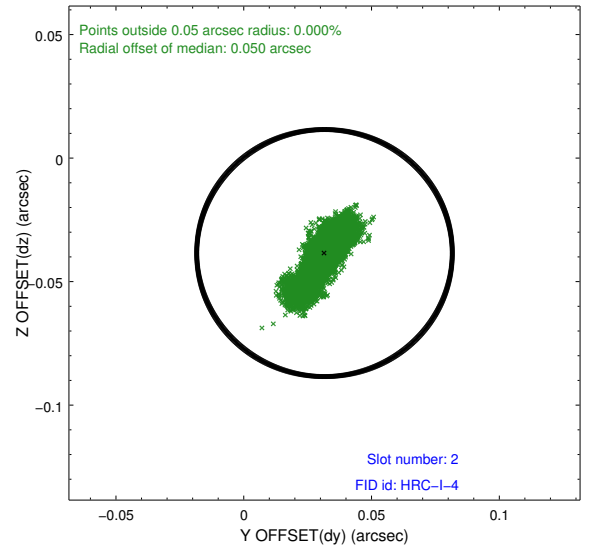
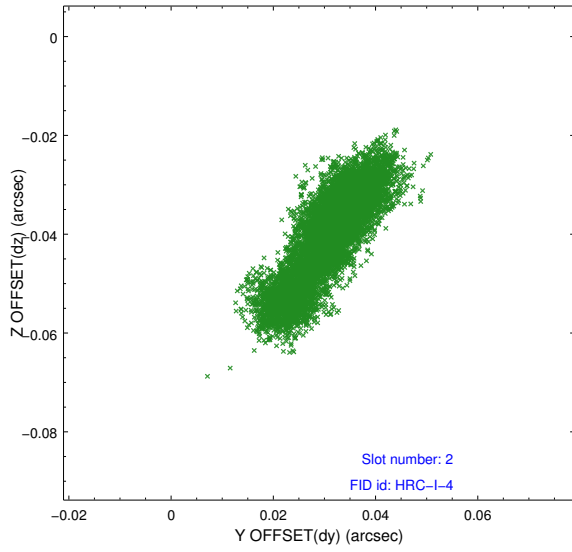
2.5.1 Slot 0



2.5.2 Slot 1



2.5.3 Slot 2



A Summary

A.1 Status

V&V Scientist	Jen Lauer
V&V Date (YYYY-MM-DD)	2012.08.23
V&V Edition	1
V&V Disposition and Status	OK
V&V Charge Time	30.451

A.2 Comments

Charge time for this ObsId remains at previous value of 30.451 ks although with the current processing the charge time would have been 30.49 ksec.