

V&V Reference Report

L2 ASCDS Version : 8.4.5

Observation 4387 - L2 Version 3
Chandra X-Ray Center

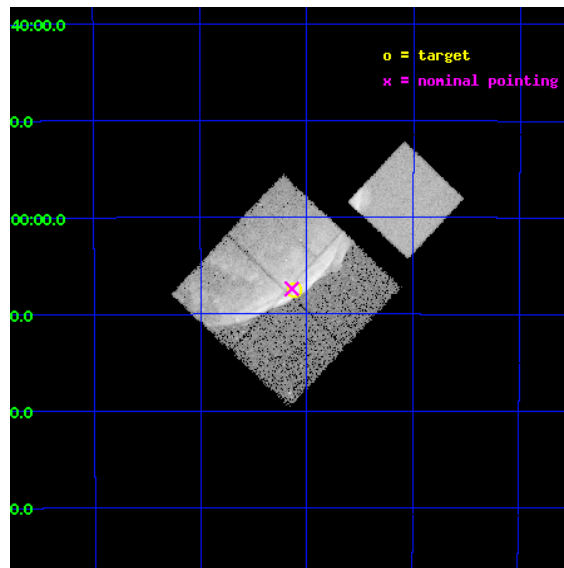
L2 Processing Date : Oct 26 2012

Contents

1	Front	2
2	OBI	3
2.1	OBI	3
2.1.1	Images	3
2.1.2	Bias	3
2.1.3	Parameters	4
2.1.4	Events	4
2.2	Compared Parameters	5
2.3	Aspect	6
2.4	Star Slots	9
2.4.1	Slot 3	9
2.4.2	Slot 4	10
2.4.3	Slot 5	11
2.4.4	Slot 6	12
2.4.5	Slot 7	13
2.5	FID Slots	14
2.5.1	Slot 0	14
2.5.2	Slot 1	15
2.5.3	Slot 2	16
A	Summary	17
A.1	Status	17
A.2	Comments	17

1 Front

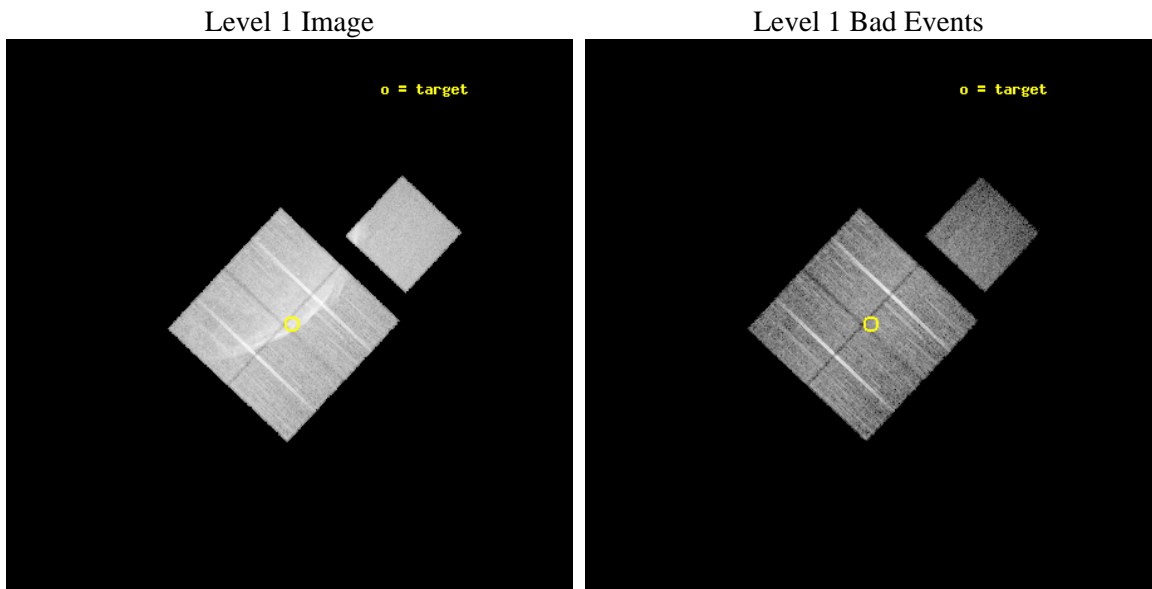
seq_num	500317	Sequence number
obs_id	4387	Observation id
title	STUDYING HIGH MACH NUMBER SHOCKS IN YOUNG SUPERNOVA REMNANTS WITH CHANDRA	Proposal title
observer	Prof. John Hughes	Principal investigator
object	SN1006	Source name
dtcycle	0	
cycle	P	events from which exps? Prim/Second/Both
ra_targ	225.529208	Observer's specified target RA [deg]
dec_targ	-42.125	Observer's specified target Dec [deg]
ra_nom	225.53502125238	Nominal RA [deg]
dec_nom	-42.123421436081	Nominal Dec [deg]
roll_nom	43.212582135271	Nominal Roll [deg]
revision	3	Processing version of data
ontime	20056.887758464	Sum of GTIs [s]
livetime	19794.829754233	Livetime [s]
ontime0	20047.341687799	Sum of GTIs [s]
ontime1	20056.805678457	Sum of GTIs [s]
ontime2	20050.564738095	Sum of GTIs [s]
ontime3	20056.887758464	Sum of GTIs [s]
ontime7	20056.928798467	Sum of GTIs [s]
l2events	205409	Number of level 2 events



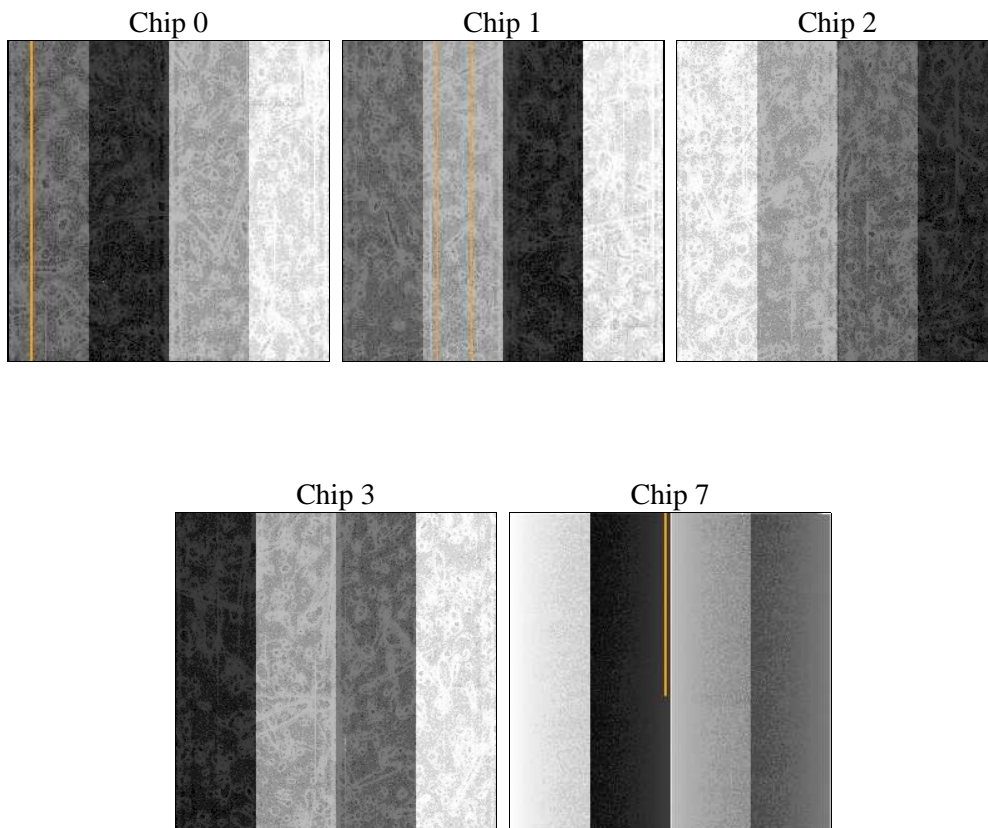
2 OBI

2.1 OBI

2.1.1 Images



2.1.2 Bias



2.1.3 Parameters

obi_num	0	Obi number	sched_exp_time	20280.000000	[s] Scheduled observation exposure time
ascdsver	8.4.5	Processing system revision	ontime	20056.887758464	Sum of GTIs [s]
caldbver	4.5.2	 	ontime0	20047.341687799	Sum of GTIs [s]
date	2012-10-26T11:56:33	Date and time of file creation	ontime1	20056.805678457	Sum of GTIs [s]
revision	3	Processing version of data	ontime2	20050.564738095	Sum of GTIs [s]
			ontime3	20056.887758464	Sum of GTIs [s]
			ontime7	20056.928798467	Sum of GTIs [s]
			l1events	633018	Number of level 1 events

2.1.4 Events

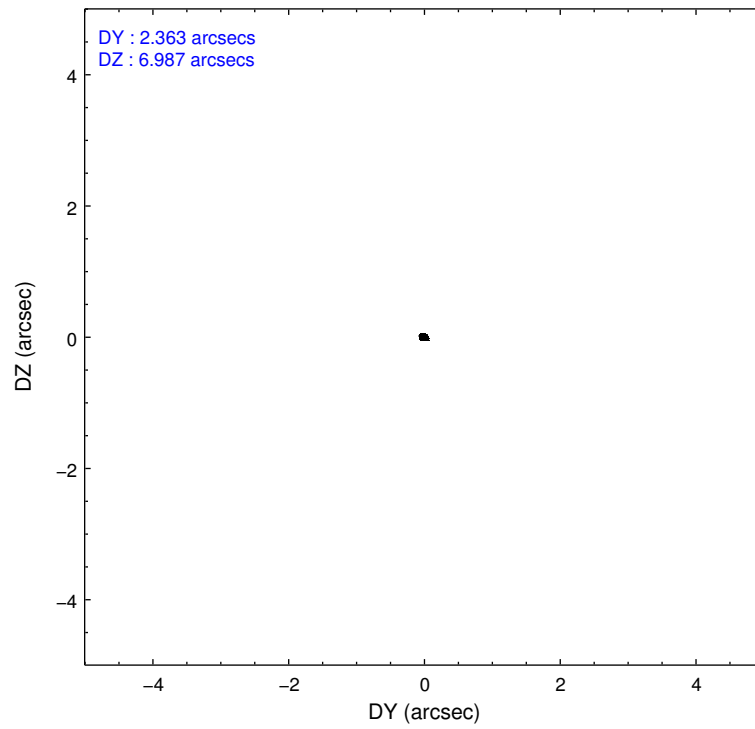
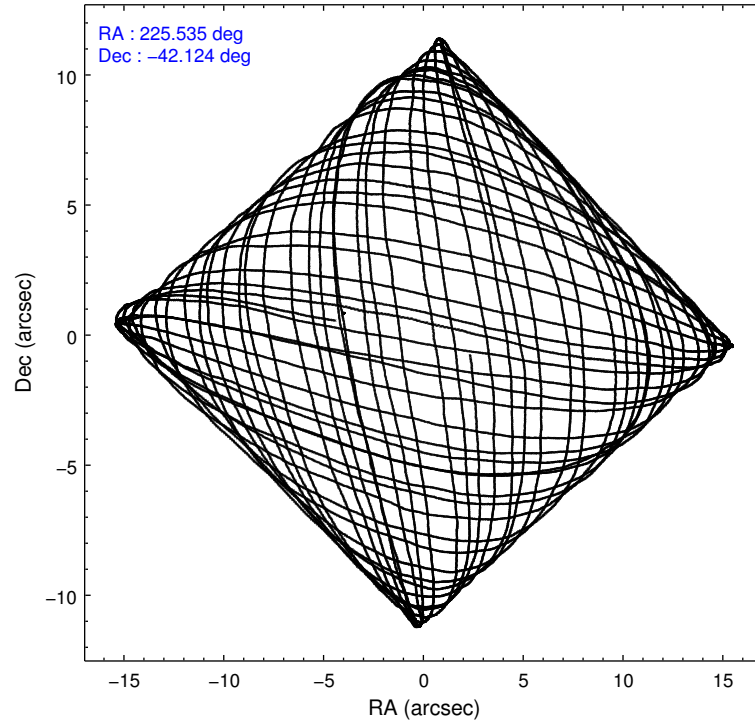
	ccd 0	ccd 1	ccd 2	ccd 3	ccd 7
level 1 events	140840	101204	150735	138381	101858
rejected events	83466	84706	99091	94867	50152
rejected %	59%	83%	65%	68%	49%

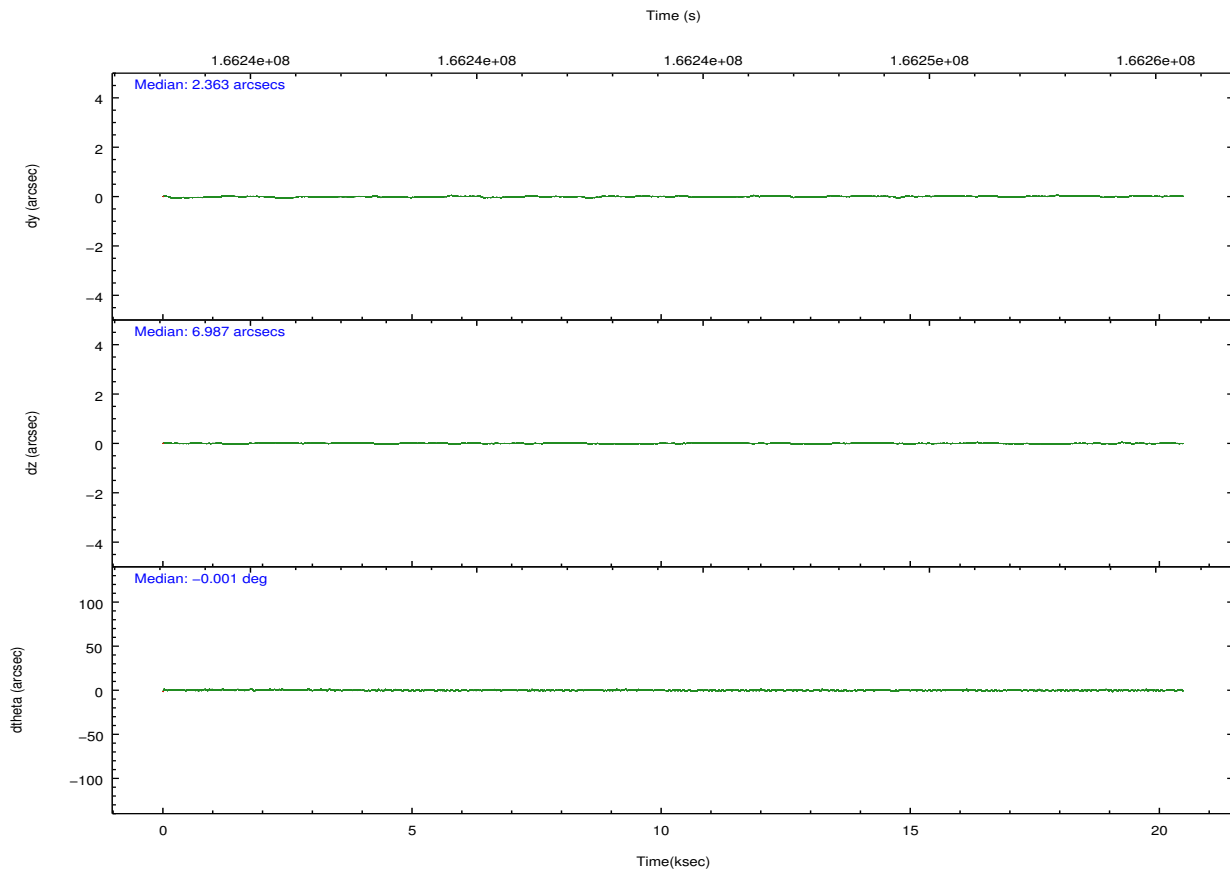
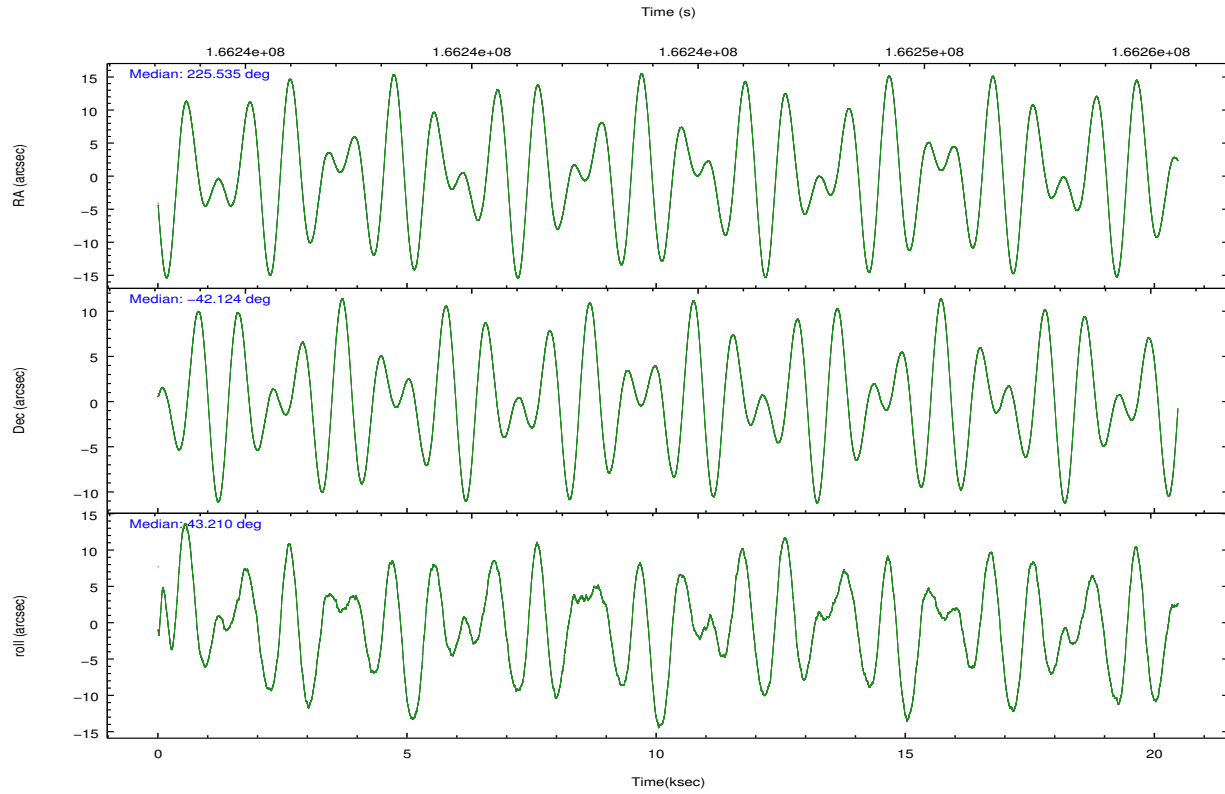
	ccd 0	ccd 1	ccd 2	ccd 3	ccd 7
grade 0 events	45348	8912	40807	33127	6160
	32%	8%	27%	23%	6%
grade 1 events	234	74	205	234	94
	0%	0%	0%	0%	0%
grade 2 events	5863	2696	5167	4577	10426
	4%	2%	3%	3%	10%
grade 3 events	1985	1425	1740	1780	4940
	1%	1%	1%	1%	4%
grade 4 events	1905	1328	1825	1845	4860
	1%	1%	1%	1%	4%
grade 5 events	3013	3320	2944	3562	10578
	2%	3%	1%	2%	10%
grade 6 events	2286	2139	2121	2202	25331
	1%	2%	1%	1%	24%
grade 7 events	80206	81310	95926	91054	39469
	56%	80%	63%	65%	38%

2.2 Compared Parameters

Parameter	Planned	Actual	Parameter	Planned	Actual
Instrument	ACIS	ACIS	Obspar format version number	7	7
Detector	ACIS-01237	ACIS-01237	Obspar file type	PREDICTED	ACTUAL
Grating	NONE	NONE	Obspar update status	NONE	UPDATED
Data mode	VFAINT	VFAINT	Number of optional ACIS chips dropped	0	0
Observation mode	POINTING	POINTING	On-chip summing requested	N	N
[deg] Pointing RA	225.524548	225.5350212523838	Subarray requested	NONE	NONE
[deg] Pointing Dec	-42.149644	-42.12342143608107	Alternating exposures requested	N	N
[deg] Pointing Roll	42.996872	43.21258213527064	[s] Primary exposure time	0.000000	3.1
[mm] SIM focus pos	-0.782348	-0.7809083437167272			
[mm] SIM defocus	0	0.001439871863259334			
[mm] SIM translation stage pos	-233.592463	-233.5874344608287			
[mm] SIM translation stage offset	0	-0.005018542100998502			
[s] Observation start time (MET)	166234289.184000	166233913.19803			
Observation start date	2003-04-09T00:10:25	2003-04-09T00:05:13			
[s] Observation end time (MET)	166254569.184000	166254702.7614			
Observation end date	2003-04-09T05:48:25	2003-04-09T05:51:42			
Read mode	TIMED	TIMED			

2.3 Aspect



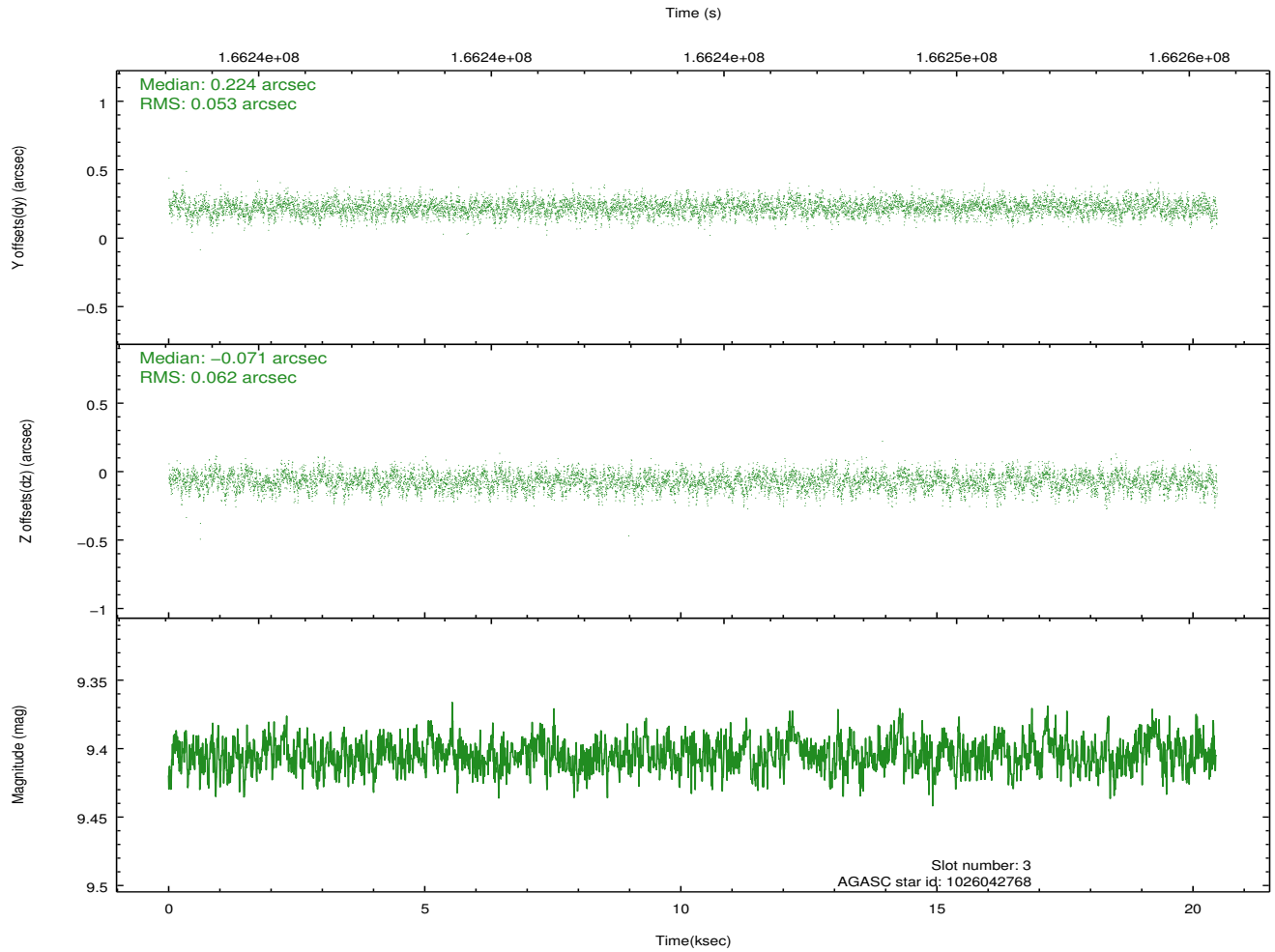
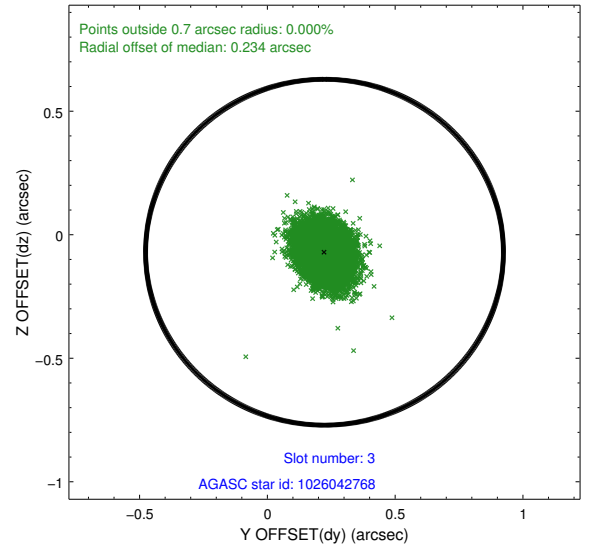
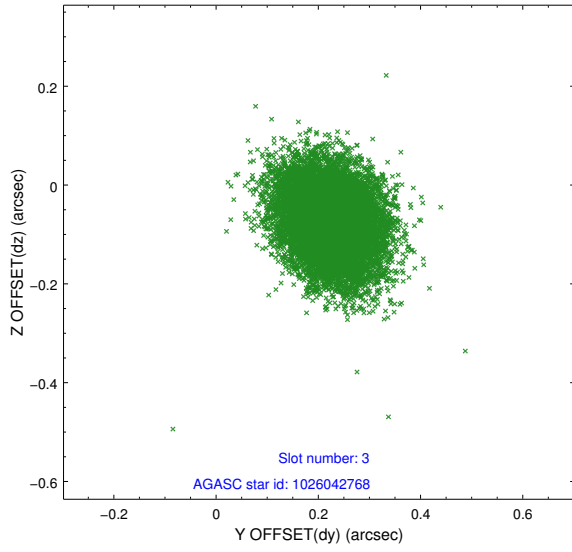


Slot Statistics

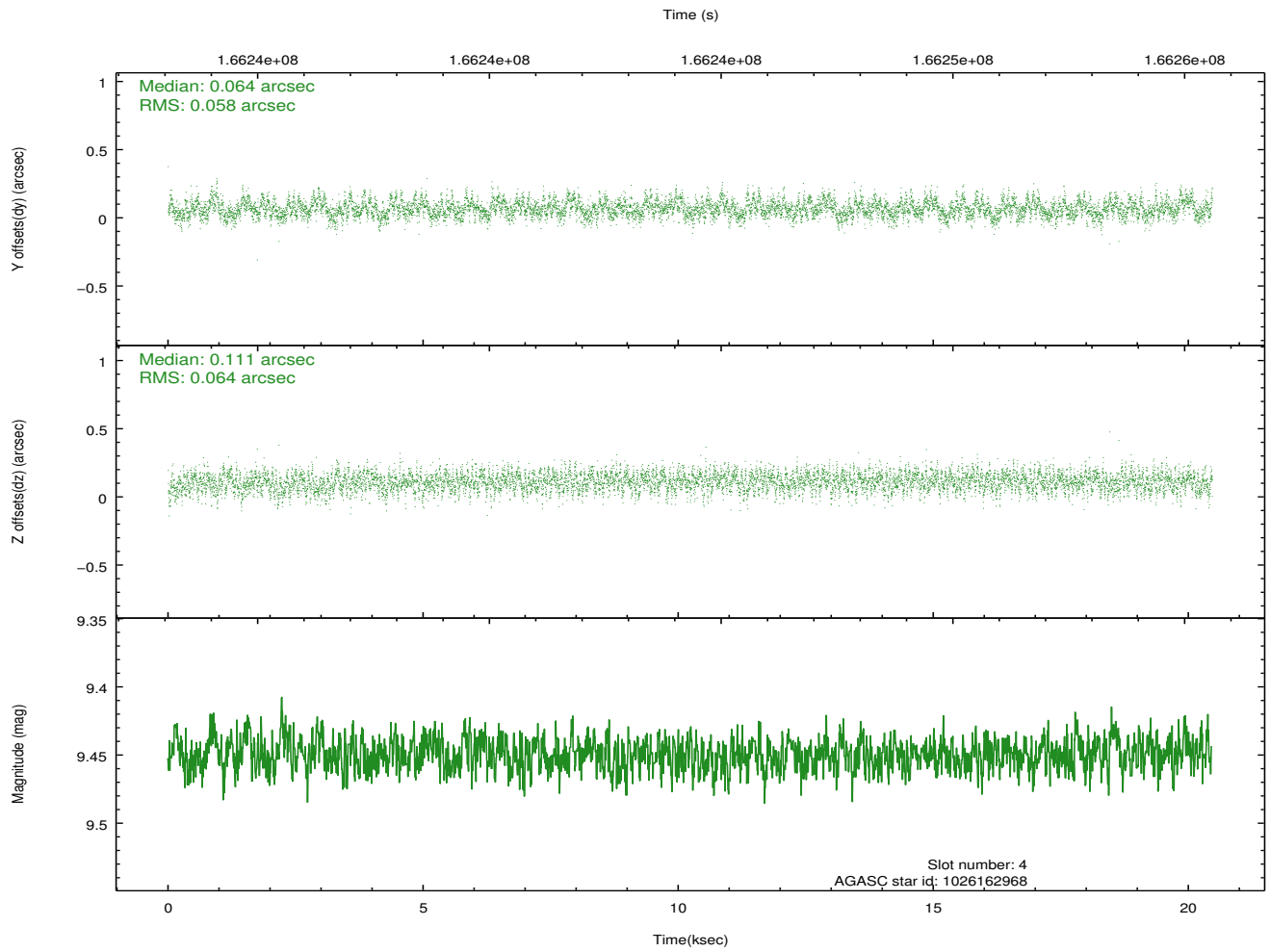
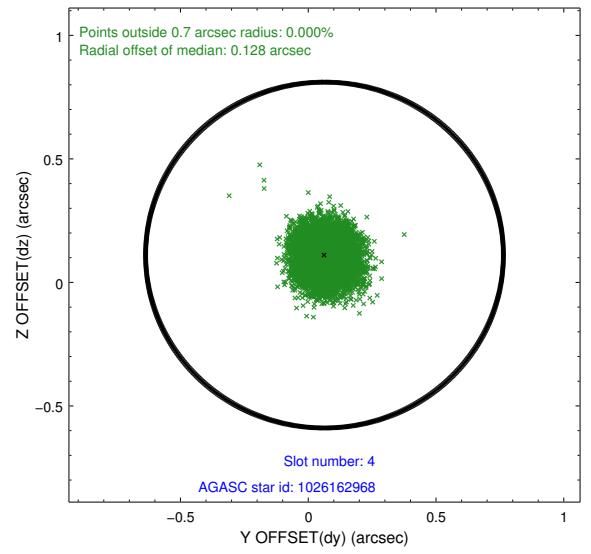
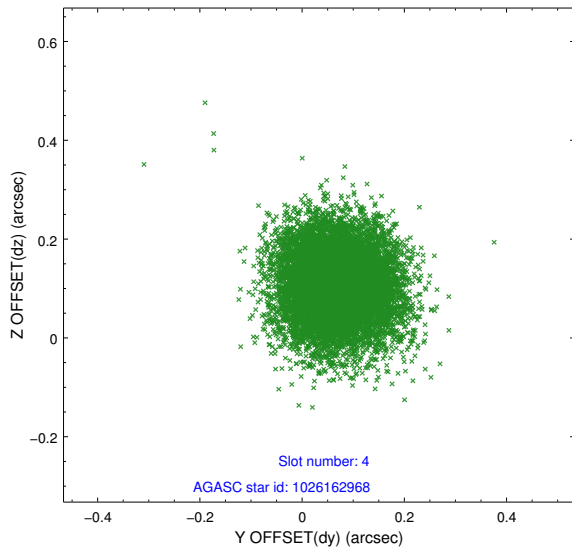
slot	status	id	mag	n_pts	med_dy	med_dz	dr1	dr2	ra	dec	mean_y	mean_z
0	FID	ACIS-I-1	7.25	4992	0.012	0.004	0.006	0.011	0.000000	0.000000	937.44	-830.40
1	FID	ACIS-I-5	7.24	4992	-0.079	0.055	0.006	0.010	0.000000	0.000000	-1810.61	1067.11
2	FID	ACIS-I-6	7.26	4992	-0.025	0.012	0.007	0.011	0.000000	0.000000	402.81	1711.73
3	GUIDE	1026042768	9.40	9981	0.224	-0.071	0.086	0.139	224.552169	-42.295856	-2262.37	1370.04
4	GUIDE	1026162968	9.45	9980	0.064	0.111	0.092	0.149	225.835985	-42.679852	-699.70	-1958.86
5	GUIDE	1026163728	9.23	9971	-0.078	-0.158	0.084	0.137	225.377558	-41.568164	1137.77	1800.67
6	GUIDE	1026185256	9.32	9981	-0.007	0.017	0.089	0.143	226.095983	-42.018643	1436.39	-700.61
7	GUIDE	1026183784	9.20	9976	-0.204	0.106	0.099	0.153	226.363370	-41.841537	2394.60	-730.69

2.4 Star Slots

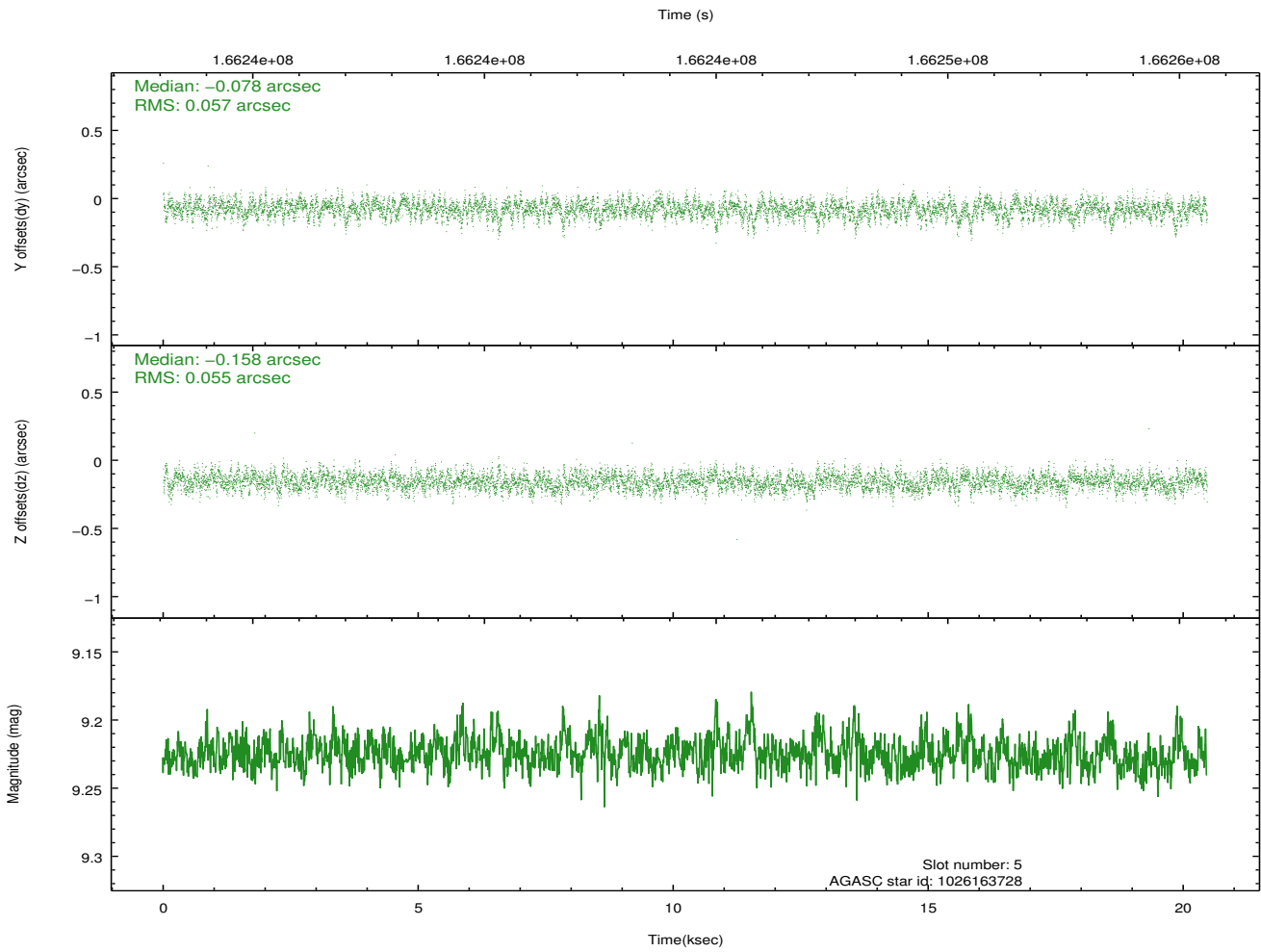
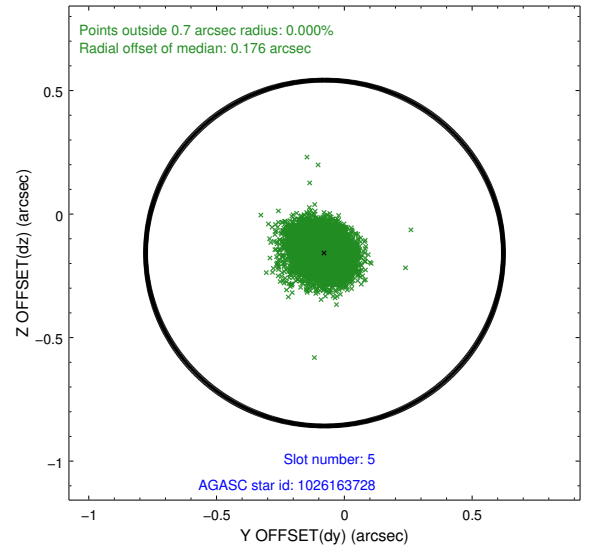
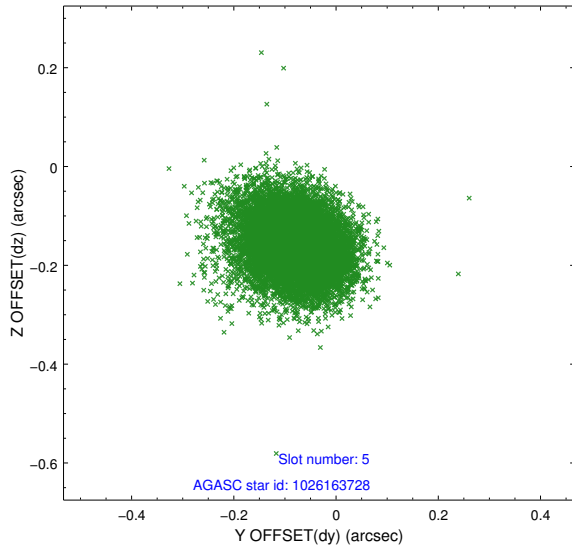
2.4.1 Slot 3



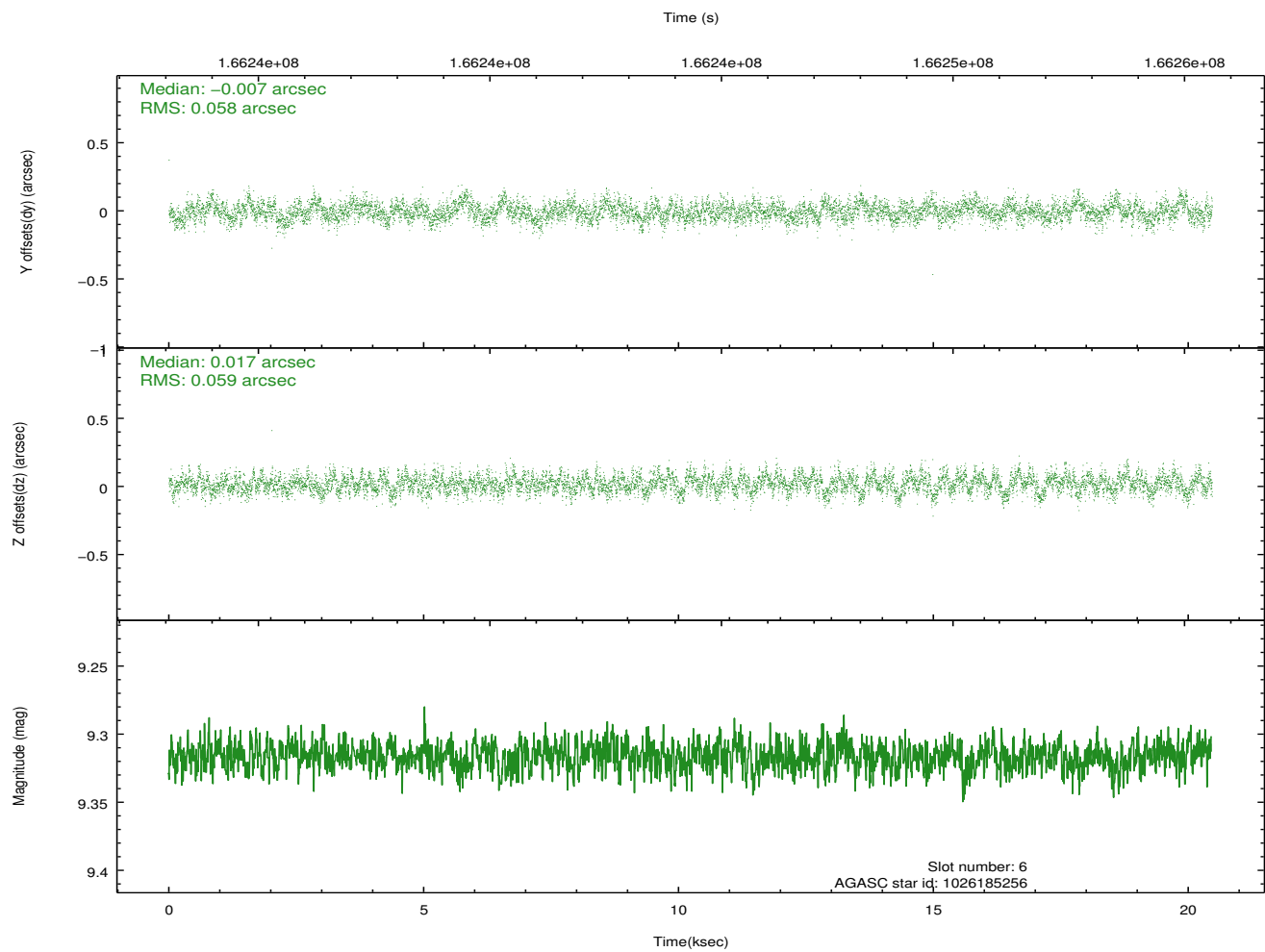
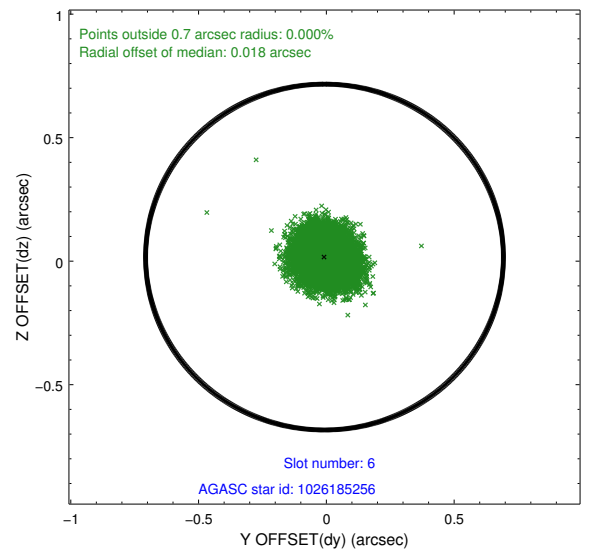
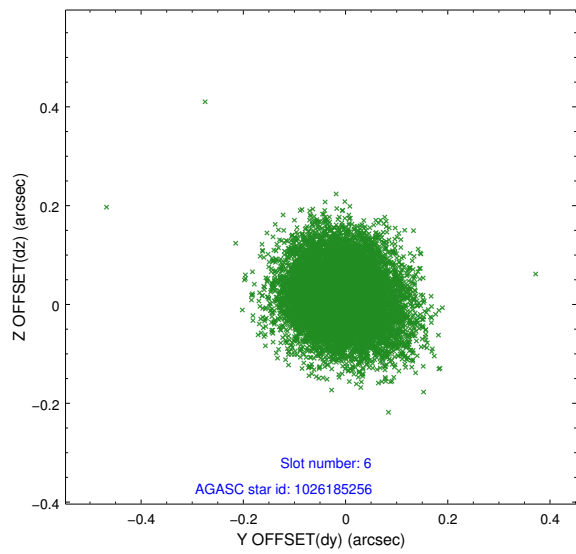
2.4.2 Slot 4



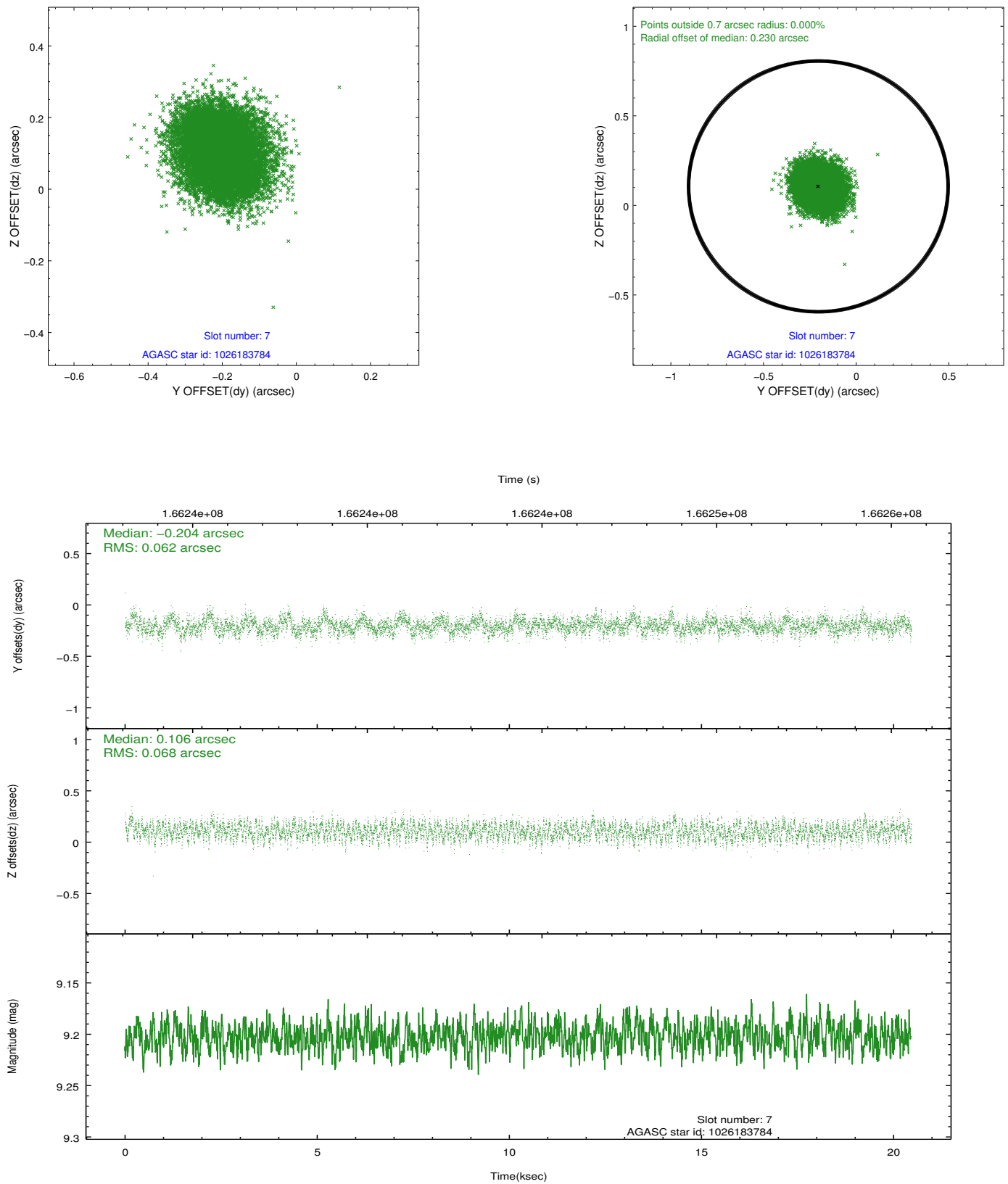
2.4.3 Slot 5



2.4.4 Slot 6

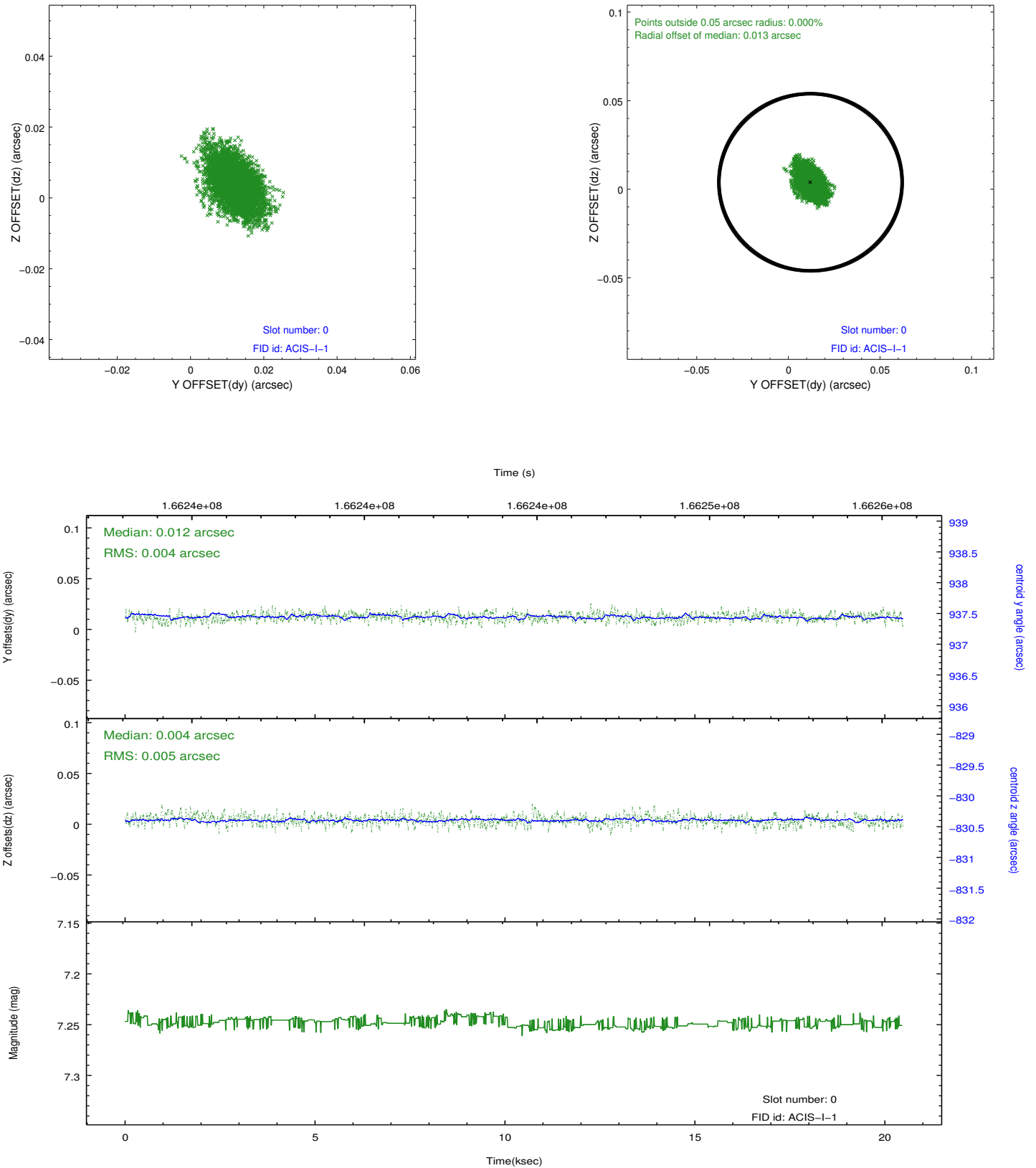


2.4.5 Slot 7

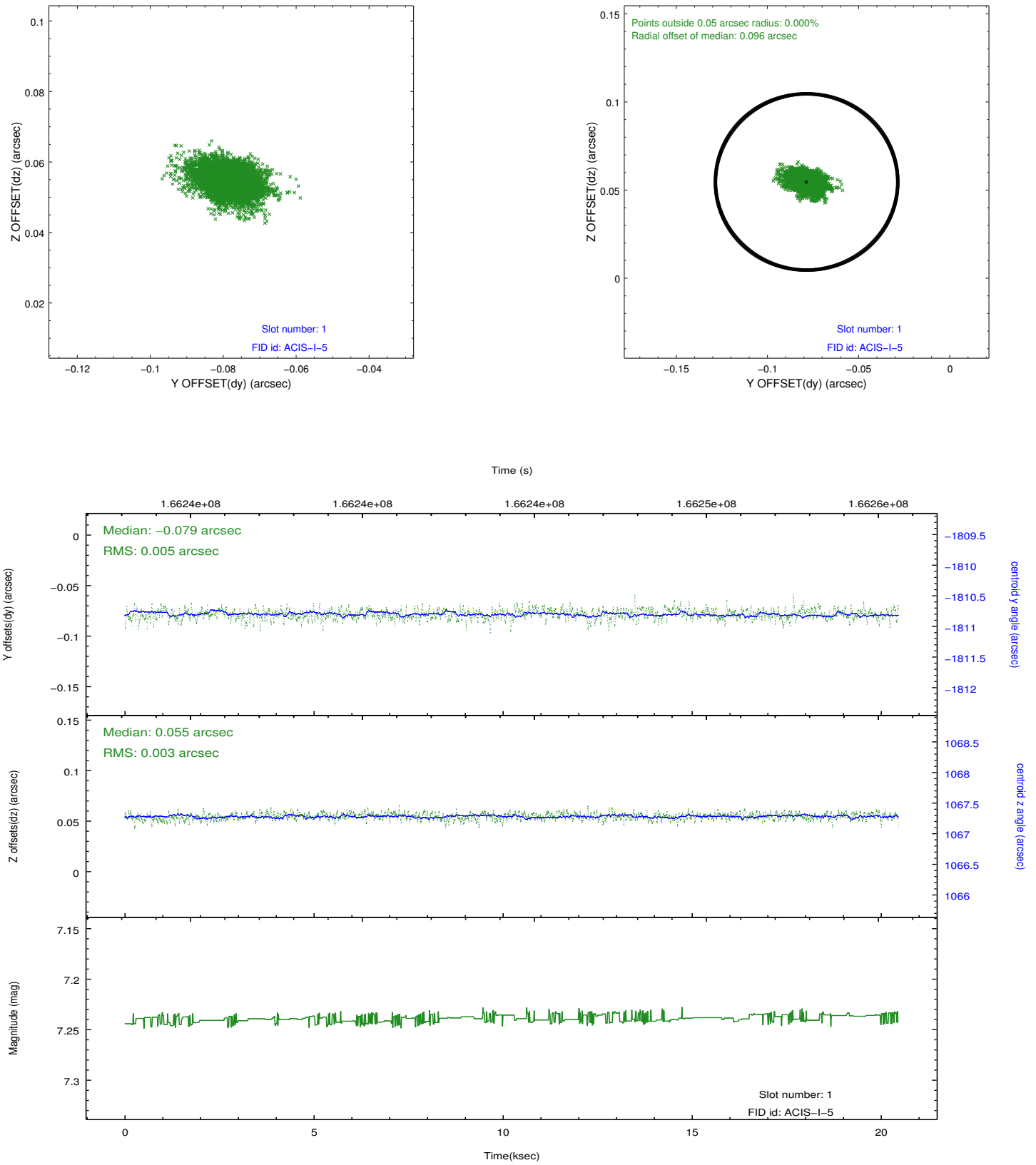


2.5 FID Slots

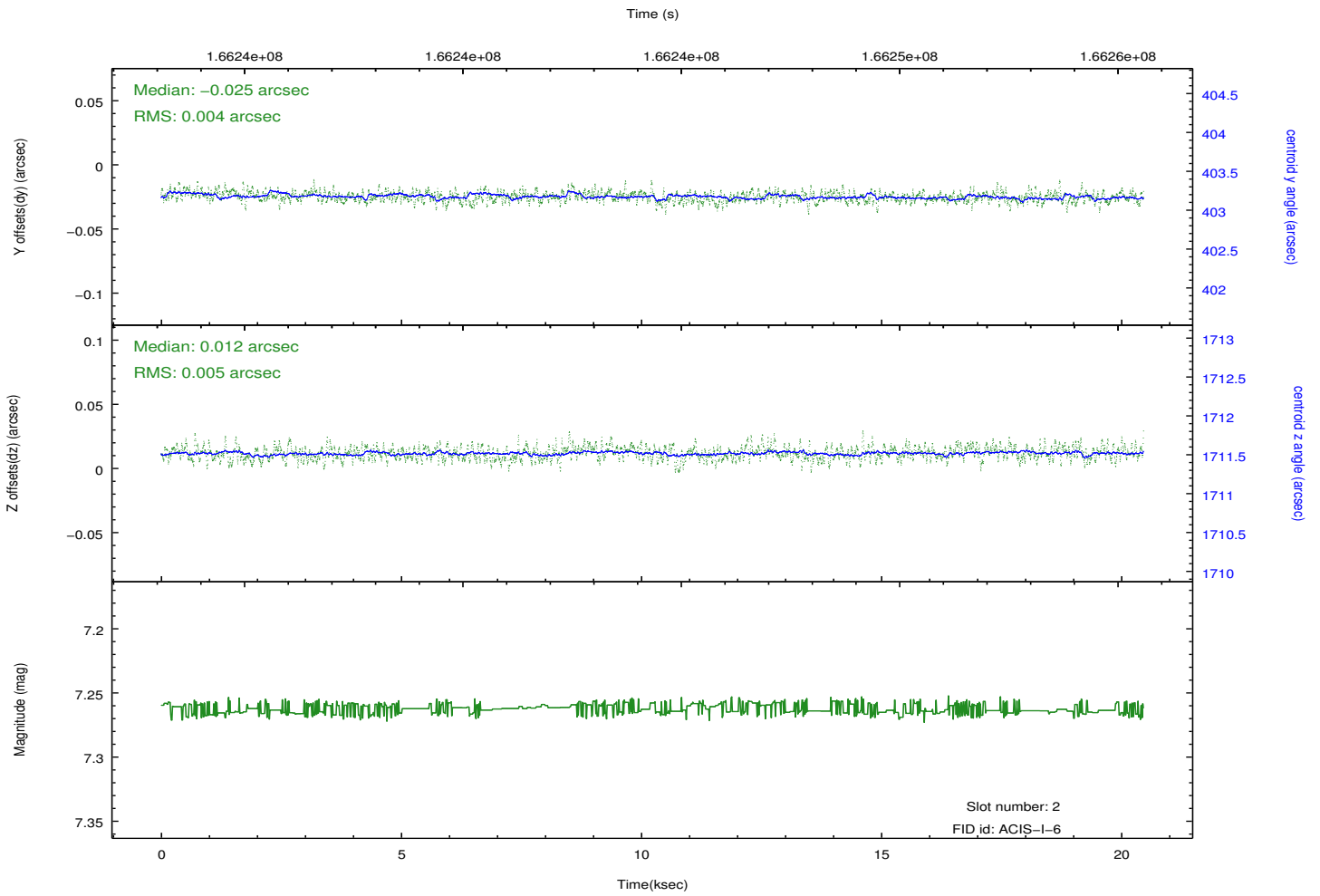
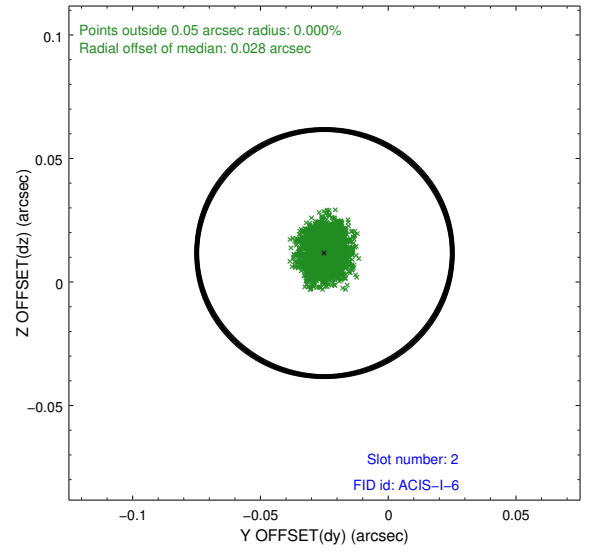
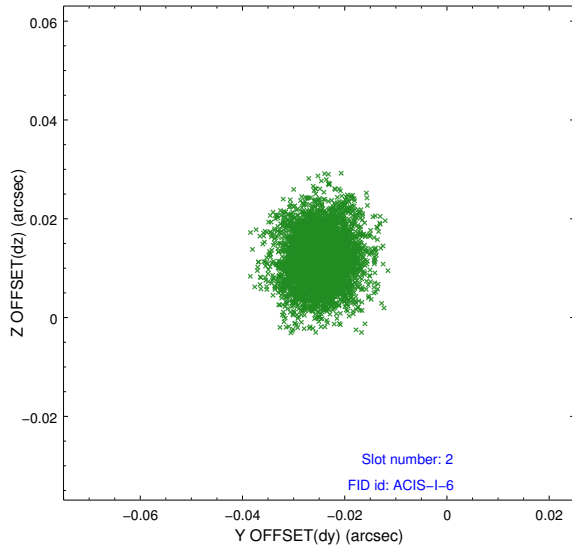
2.5.1 Slot 0



2.5.2 Slot 1



2.5.3 Slot 2



A Summary

A.1 Status

V&V Scientist	Jen Lauer
V&V Date (YYYY-MM-DD)	2012.11.14
V&V Edition	1
V&V Disposition and Status	OK
V&V Charge Time	20.056

A.2 Comments