

# V&V Reference Report

## L2 ASCDS Version : 8.4.5

Observation 4417 - L2 Version 4  
Chandra X-Ray Center

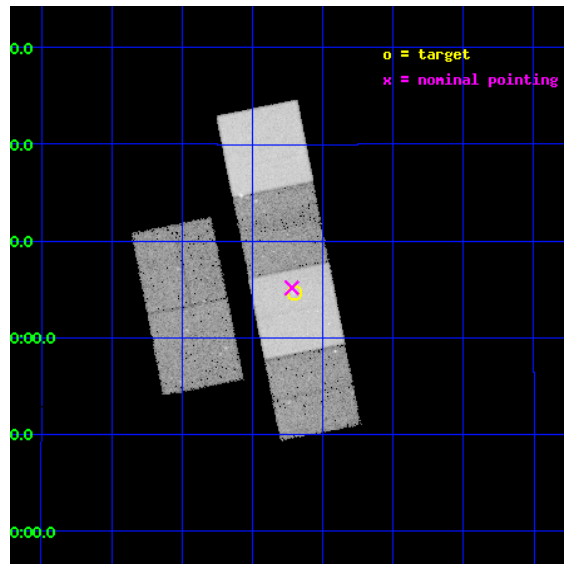
L2 Processing Date : Oct 22 2012

## Contents

<b>1</b>	<b>Front</b>	<b>2</b>
<b>2</b>	<b>OBI</b>	<b>3</b>
2.1	OBI . . . . .	3
2.1.1	Images . . . . .	3
2.1.2	Bias . . . . .	3
2.1.3	Parameters . . . . .	4
2.1.4	Events . . . . .	4
2.2	Compared Parameters . . . . .	5
2.3	Aspect . . . . .	6
2.4	Star Slots . . . . .	9
2.4.1	Slot 3 . . . . .	9
2.4.2	Slot 4 . . . . .	10
2.4.3	Slot 5 . . . . .	11
2.4.4	Slot 6 . . . . .	12
2.4.5	Slot 7 . . . . .	13
2.5	FID Slots . . . . .	14
2.5.1	Slot 0 . . . . .	14
2.5.2	Slot 1 . . . . .	15
2.5.3	Slot 2 . . . . .	16
<b>A</b>	<b>Summary</b>	<b>17</b>
A.1	Status . . . . .	17
A.2	Comments . . . . .	17

# 1 Front

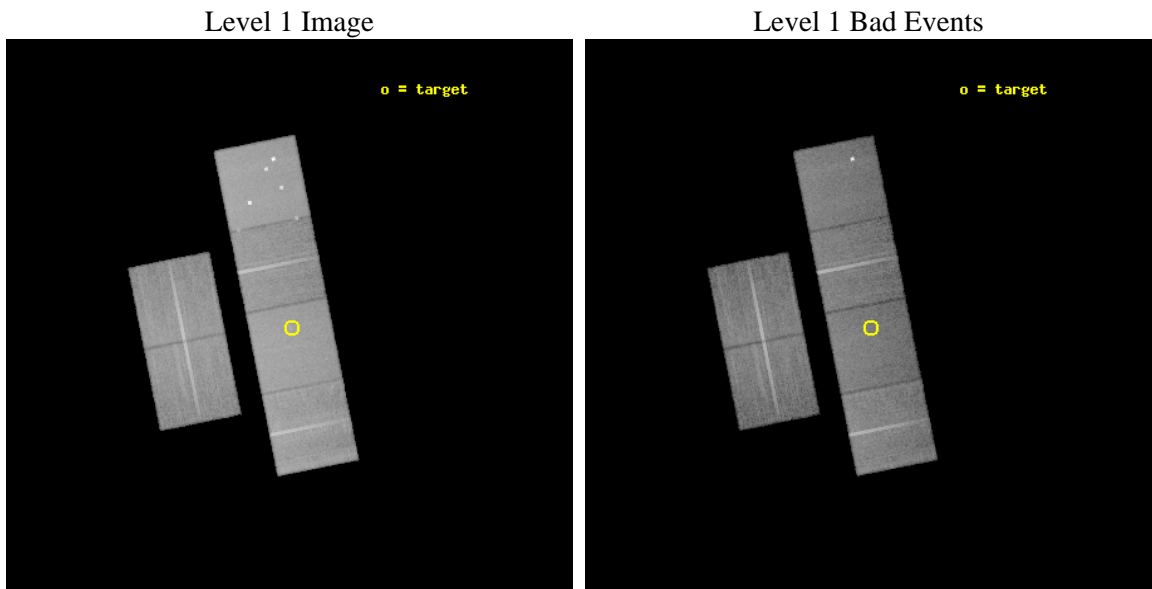
seq_num	500409	Sequence number
obs_id	4417	Observation id
title	EXPLORING THE GRB-SUPERNOVA CONNECTION VIA SN2003L	Proposal title
observer	Prof. Shrinivas Kulkarni	Principal investigator
object	SN2003L	Source name
dtcycle	0	&#160
cycle	P	events from which exps? Prim/Second/Both
ra_targ	165.80125	Observer's specified target RA [deg]
dec_targ	11.077222	Observer's specified target Dec [deg]
ra_nom	165.80482664146	Nominal RA [deg]
dec_nom	11.086190021164	Nominal Dec [deg]
roll_nom	78.713949462094	Nominal Roll [deg]
revision	4	Processing version of data
ontime	30415.999886692	Sum of GTIs [s]
livetime	30030.85418181	Livetime [s]
ontime2	30415.999886692	Sum of GTIs [s]
ontime3	30415.999886692	Sum of GTIs [s]
ontime5	30415.999886692	Sum of GTIs [s]
ontime6	30412.758926332	Sum of GTIs [s]
ontime7	30415.999886692	Sum of GTIs [s]
ontime8	30415.999886692	Sum of GTIs [s]
l2events	309245	Number of level 2 events



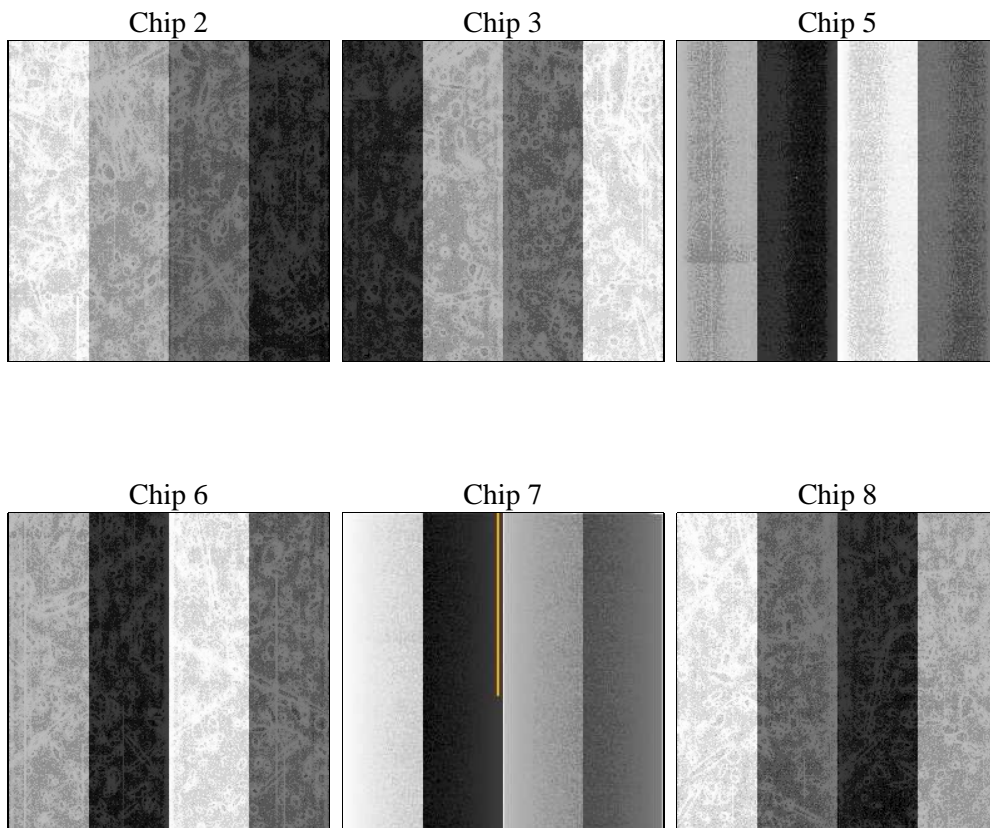
## 2 OBI

### 2.1 OBI

#### 2.1.1 Images



#### 2.1.2 Bias



### 2.1.3 Parameters

obi_num	0	Obi number	sched_exp_time	30300.000000	[s] Scheduled observation exposure time
ascdsver	8.4.5	Processing system revision	ontime	30415.999886692	Sum of GTIs [s]
caldbver	4.5.2	&#160	ontime2	30415.999886692	Sum of GTIs [s]
date	2012-10-22T08:22:49	Date and time of file creation	ontime3	30415.999886692	Sum of GTIs [s]
revision	4	Processing version of data	ontime5	30415.999886692	Sum of GTIs [s]
			ontime6	30412.758926332	Sum of GTIs [s]
			ontime7	30415.999886692	Sum of GTIs [s]
			ontime8	30415.999886692	Sum of GTIs [s]
			l1events	1427664	Number of level 1 events

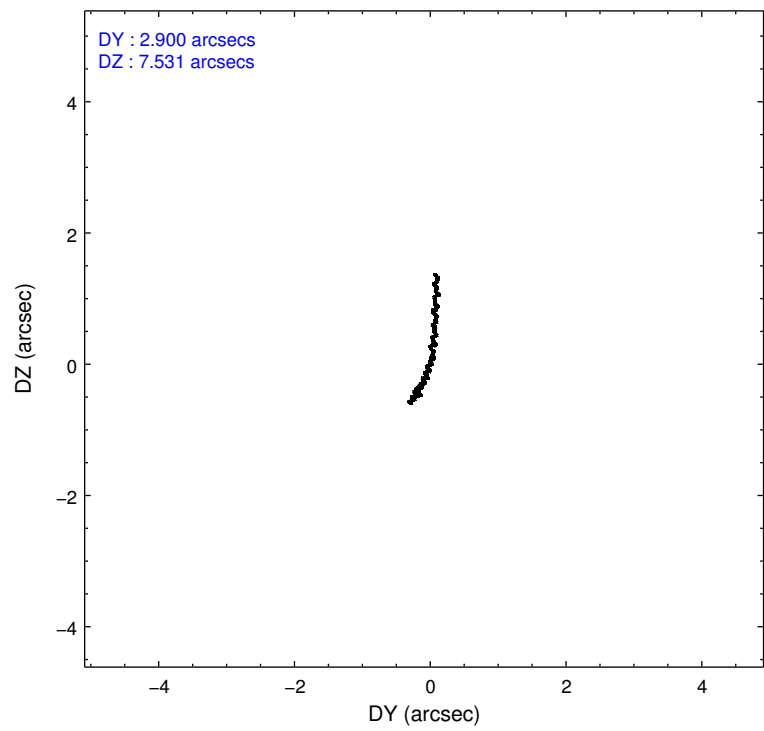
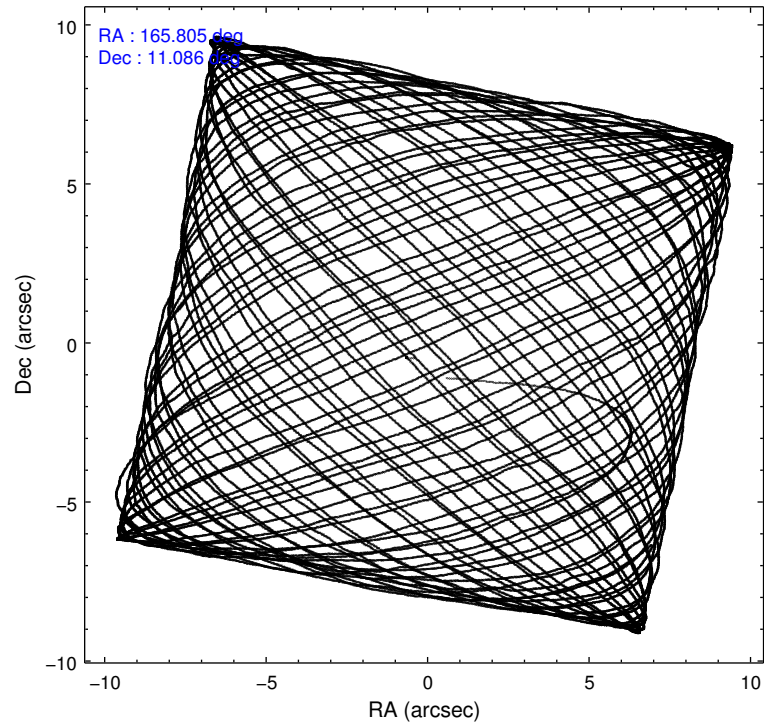
### 2.1.4 Events

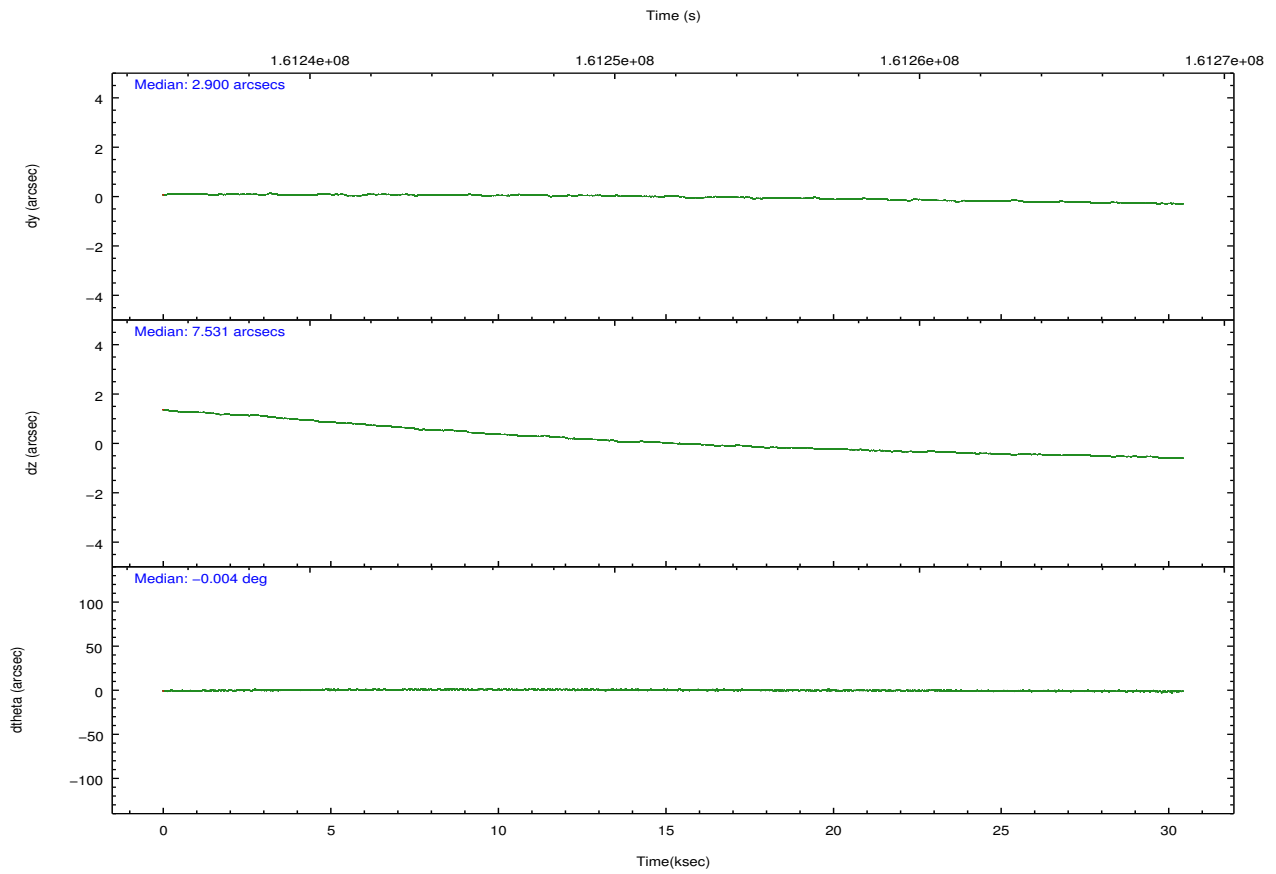
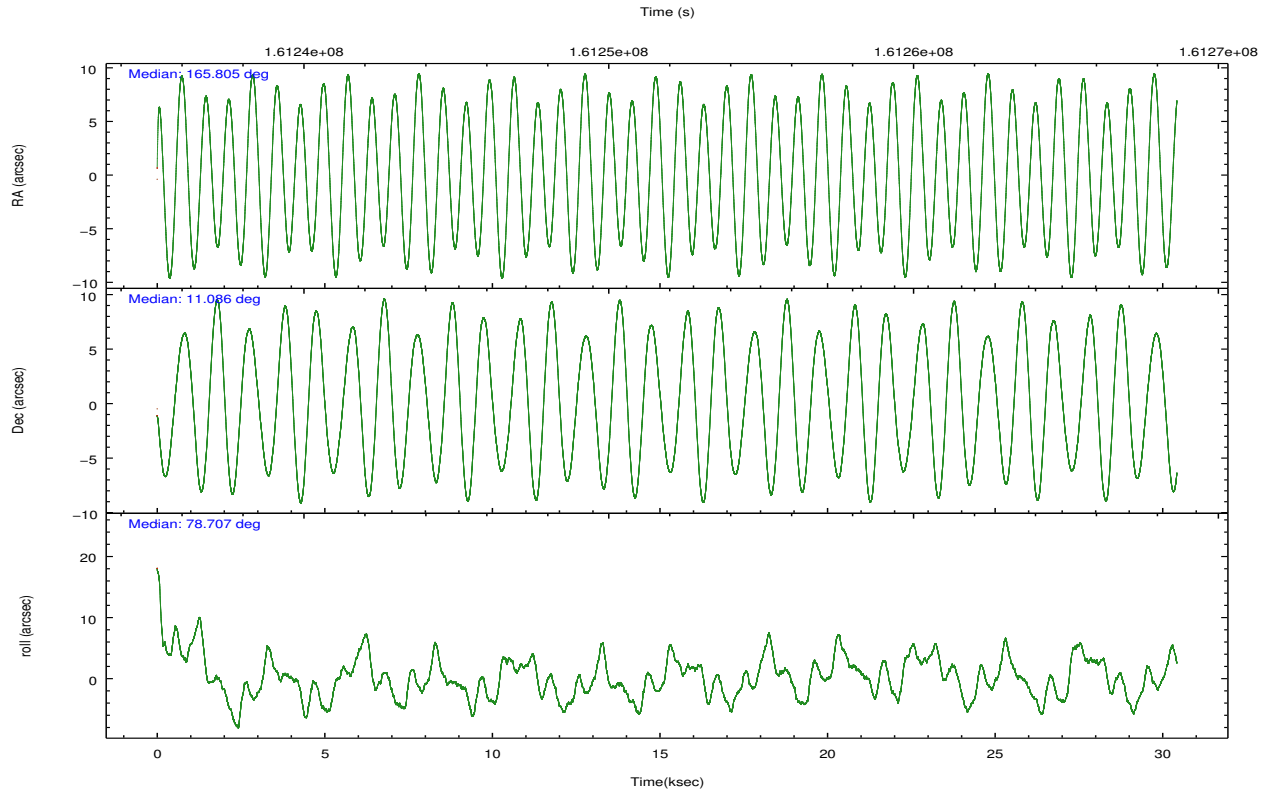
	ccd 2	ccd 3	ccd 5	ccd 6	ccd 7	ccd 8		ccd 2	ccd 3	ccd 5	ccd 6	ccd 7	ccd 8
level 1 events	204083	194868	309277	200575	263930	254931	grade 0 events	9760	9968	25324	9507	10009	16434
rejected events	181672	172353	164612	176984	155406	202497		4%	5%	8%	4%	3%	6%
rejected %	89%	88%	53%	88%	58%	79%	grade 1 events	123	90	385	115	246	149
								0%	0%	0%	0%	0%	0%
							grade 2 events	4643	4239	40261	4825	21412	11392
								2%	2%	13%	2%	8%	4%
							grade 3 events	2185	2239	5477	2338	9749	5677
								1%	1%	1%	1%	3%	2%
							grade 4 events	2240	2172	4888	2294	9883	5251
								1%	1%	1%	1%	3%	2%
							grade 5 events	7595	8409	23028	8890	25181	11460
								3%	4%	7%	4%	9%	4%
							grade 6 events	3686	3993	69335	4727	57945	13891
								1%	2%	22%	2%	21%	5%
							grade 7 events	173851	163758	140579	167879	129505	190677
								85%	84%	45%	83%	49%	74%

## 2.2 Compared Parameters

Parameter	Planned	Actual	Parameter	Planned	Actual
Instrument	ACIS	ACIS	Obspar format version number	7	7
Detector	ACIS-235678	ACIS-235678	Obspar file type	PREDICTED	ACTUAL
Grating	NONE	NONE	Obspar update status	NONE	UPDATED
Data mode	FAINT	FAINT	Number of optional ACIS chips dropped	0	0
Observation mode	POINTING	POINTING	On-chip summing requested	N	N
[deg] Pointing RA	165.814101	165.8048266414567	Subarray requested	NONE	NONE
[deg] Pointing Dec	11.060549	11.08619002116426	Alternating exposures requested	N	N
[deg] Pointing Roll	78.555539	78.71394946209352	[s] Primary exposure time	0.000000	3.2
[mm] SIM focus pos	-0.684267	-0.6828225247311905			
[mm] SIM defocus	0	0.001444936568705701			
[mm] SIM translation stage pos	-190.132523	-190.1400660498719			
[mm] SIM translation stage offset	0	0.00754346686406393			
[s] Observation start time (MET)	161236827.184000	161235722.4001			
Observation start date	2003-02-10T03:59:23	2003-02-10T03:42:02			
[s] Observation end time (MET)	161267127.184000	161267912.01396			
Observation end date	2003-02-10T12:24:23	2003-02-10T12:38:32			
Read mode	TIMED	TIMED			

## 2.3 Aspect



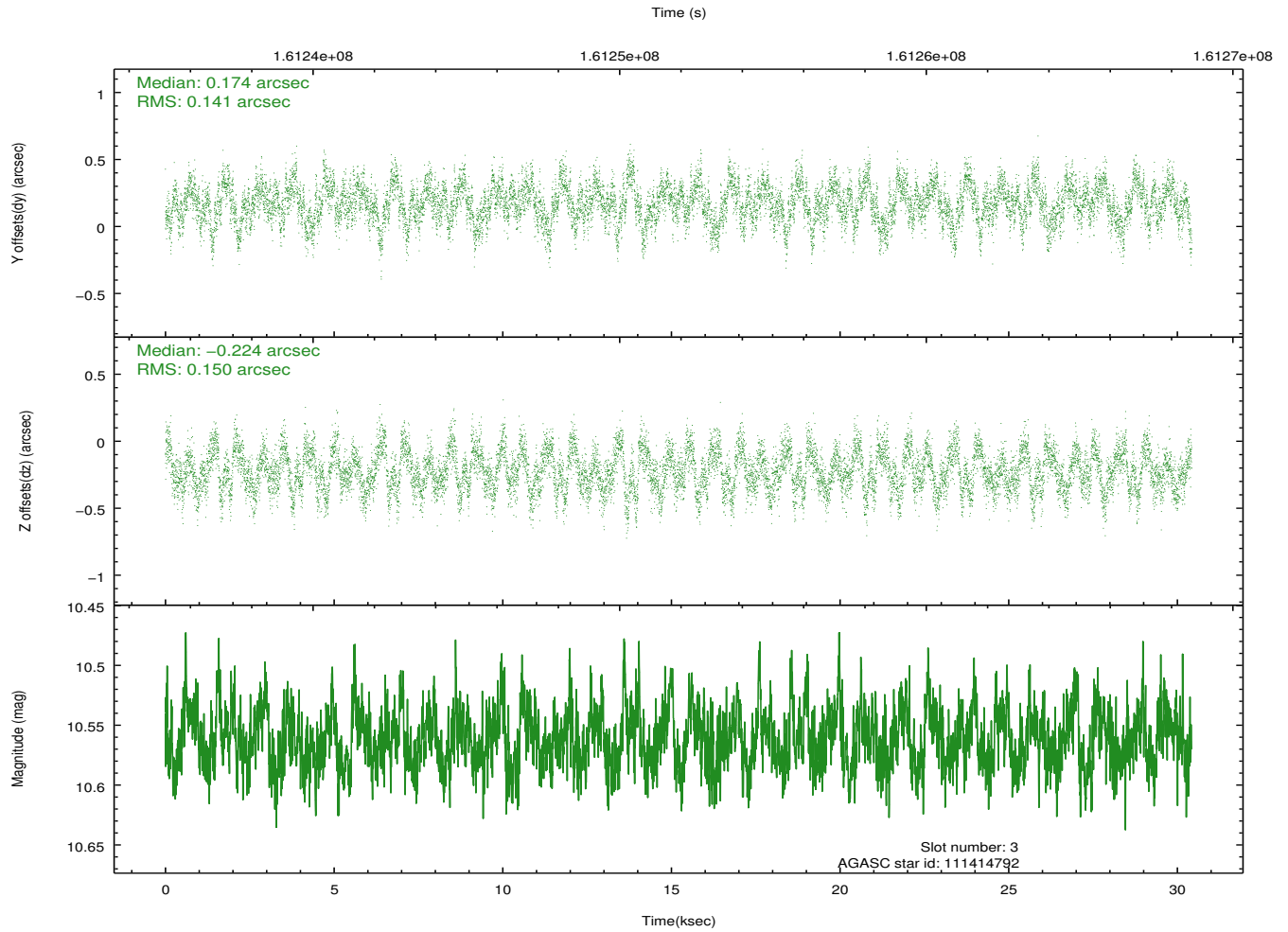
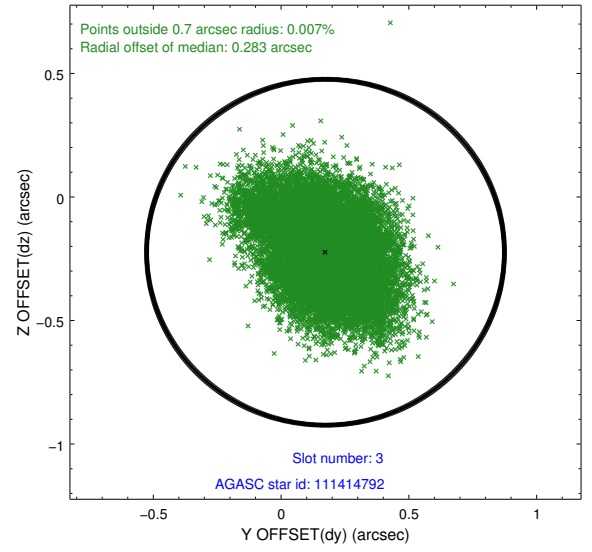
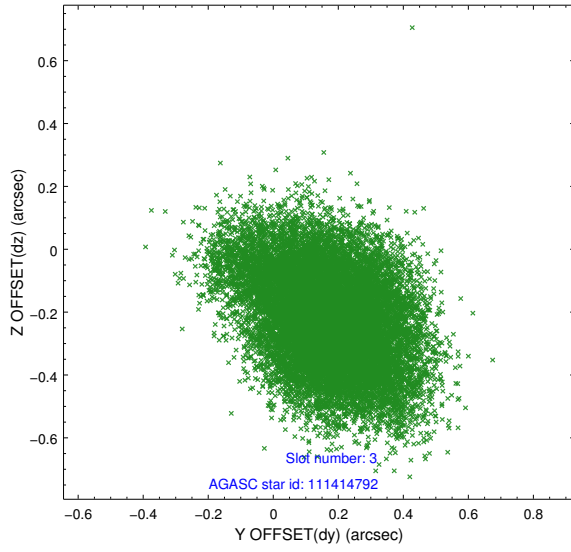


### Slot Statistics

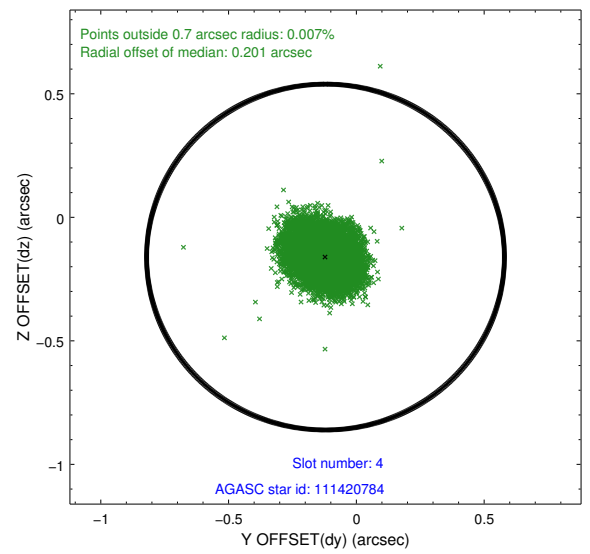
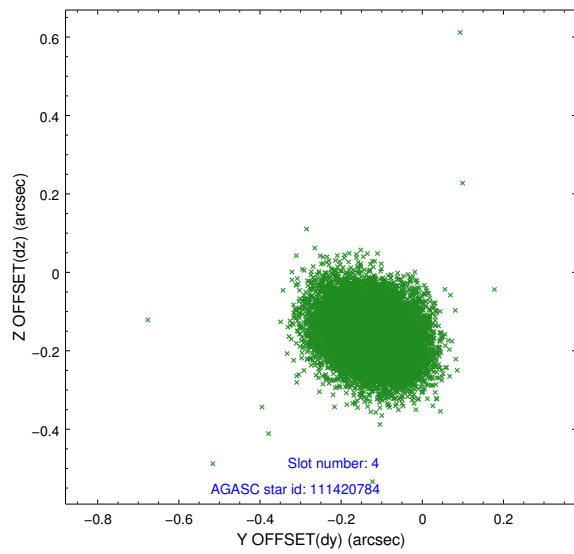
slot	status	id	mag	n_pts	med_dy	med_dz	dr1	dr2	ra	dec	mean_y	mean_z
0	FID	ACIS-S-2	7.11	7422	-0.022	-0.009	0.011	0.017	0.000000	0.000000	-755.51	-1728.88
1	FID	ACIS-S-4	7.20	7421	0.000	0.013	0.008	0.017	0.000000	0.000000	2157.75	179.56
2	FID	ACIS-S-5	7.24	7420	-0.012	0.006	0.012	0.020	0.000000	0.000000	-1808.26	173.30
3	GUIDE	111414792	10.56	14819	0.174	-0.224	0.220	0.356	165.321853	10.787005	-1308.85	1510.75
4	GUIDE	111420784	9.45	14837	-0.121	-0.161	0.094	0.153	165.354067	11.539798	1370.25	1933.31
5	GUIDE	111545144	8.56	14836	-0.032	0.148	0.087	0.135	166.335397	10.552556	-1424.09	-2170.62
6	GUIDE	111546720	10.50	14831	-0.094	0.272	0.150	0.253	166.494839	11.301119	1328.91	-2182.59
7	GUIDE	111546168	9.79	14811	0.080	-0.034	0.153	0.245	166.269202	11.246606	977.22	-1441.99

## 2.4 Star Slots

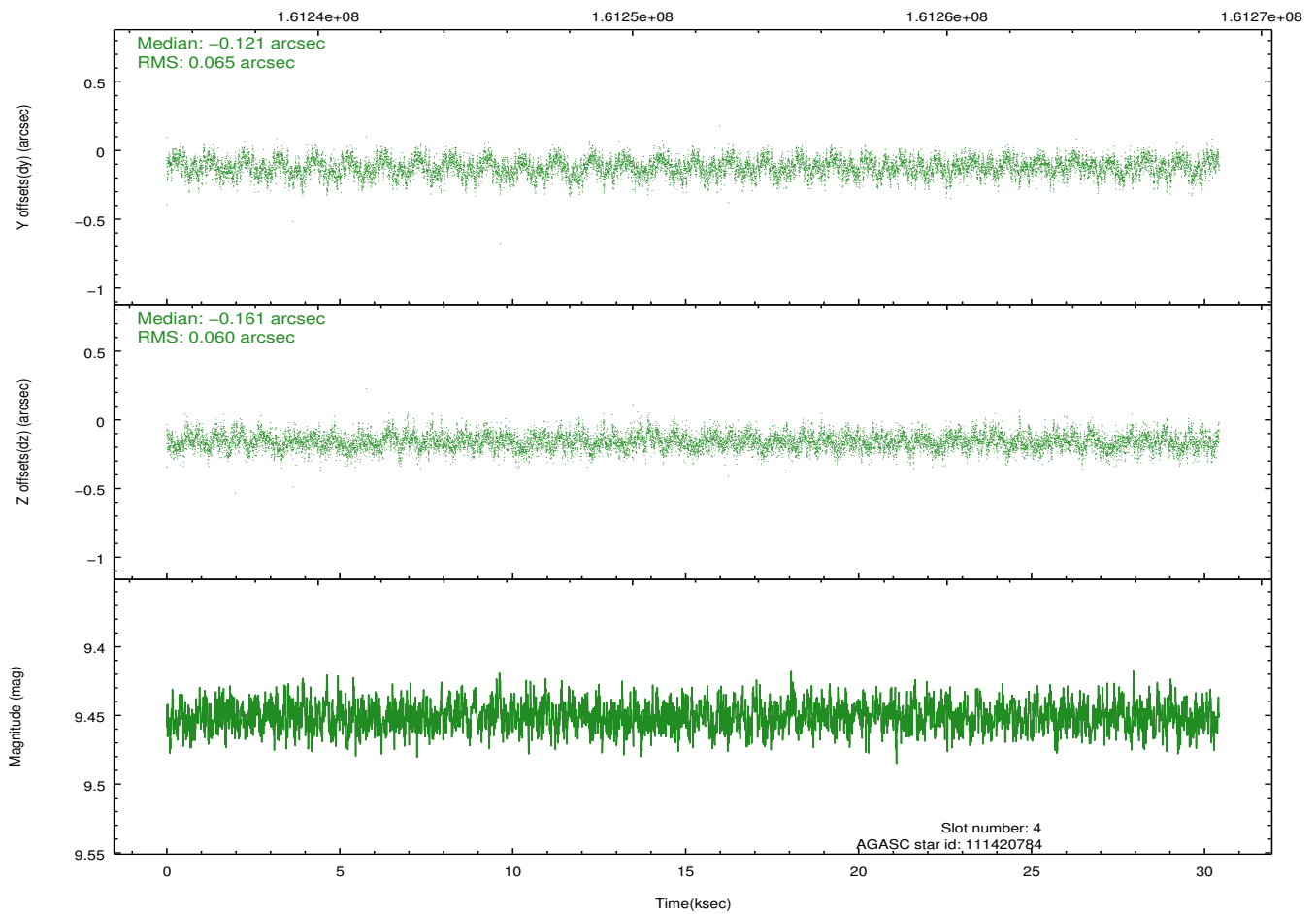
### 2.4.1 Slot 3



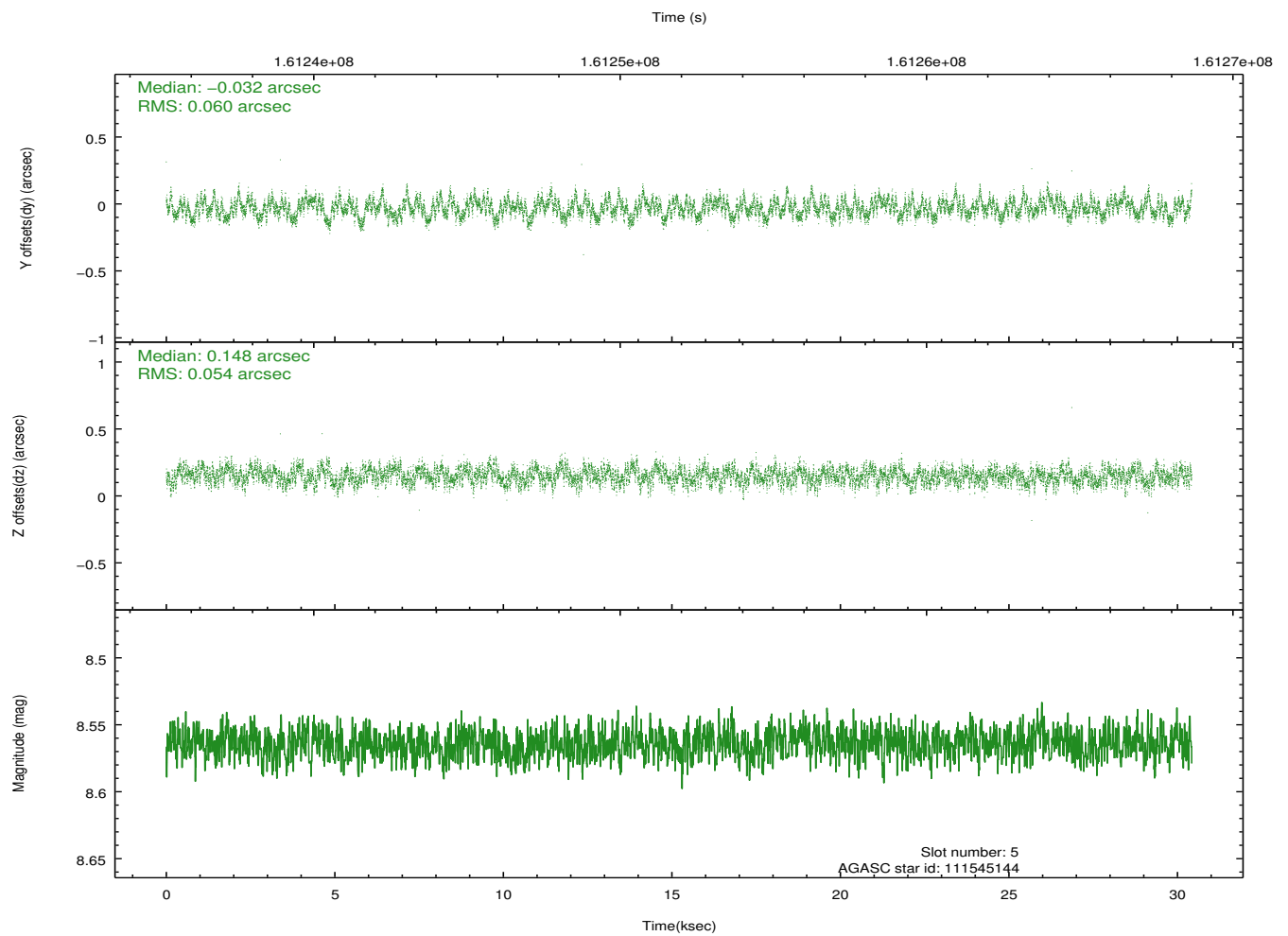
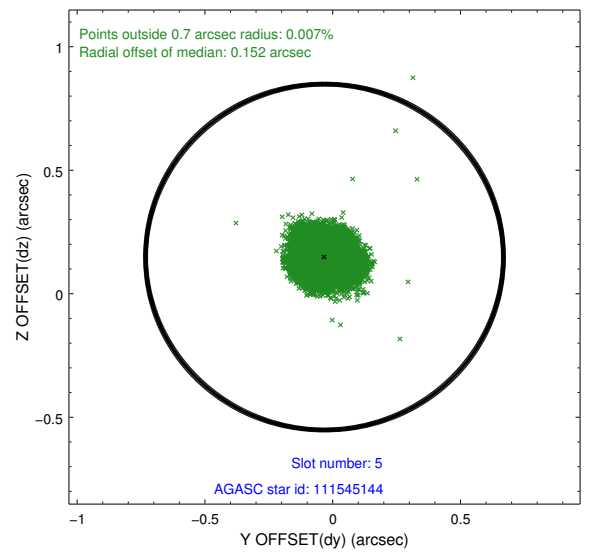
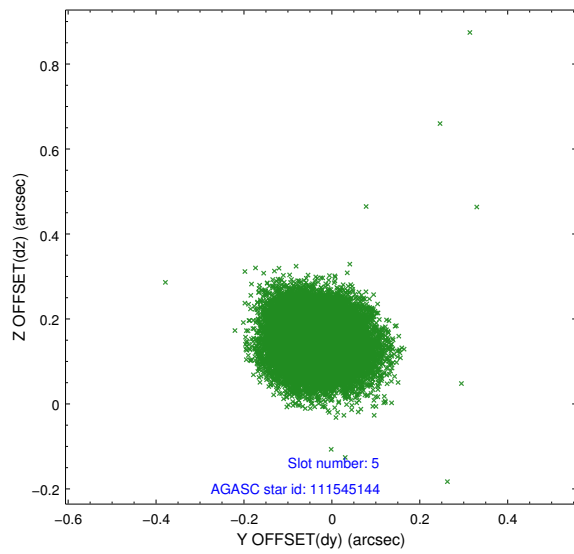
## 2.4.2 Slot 4



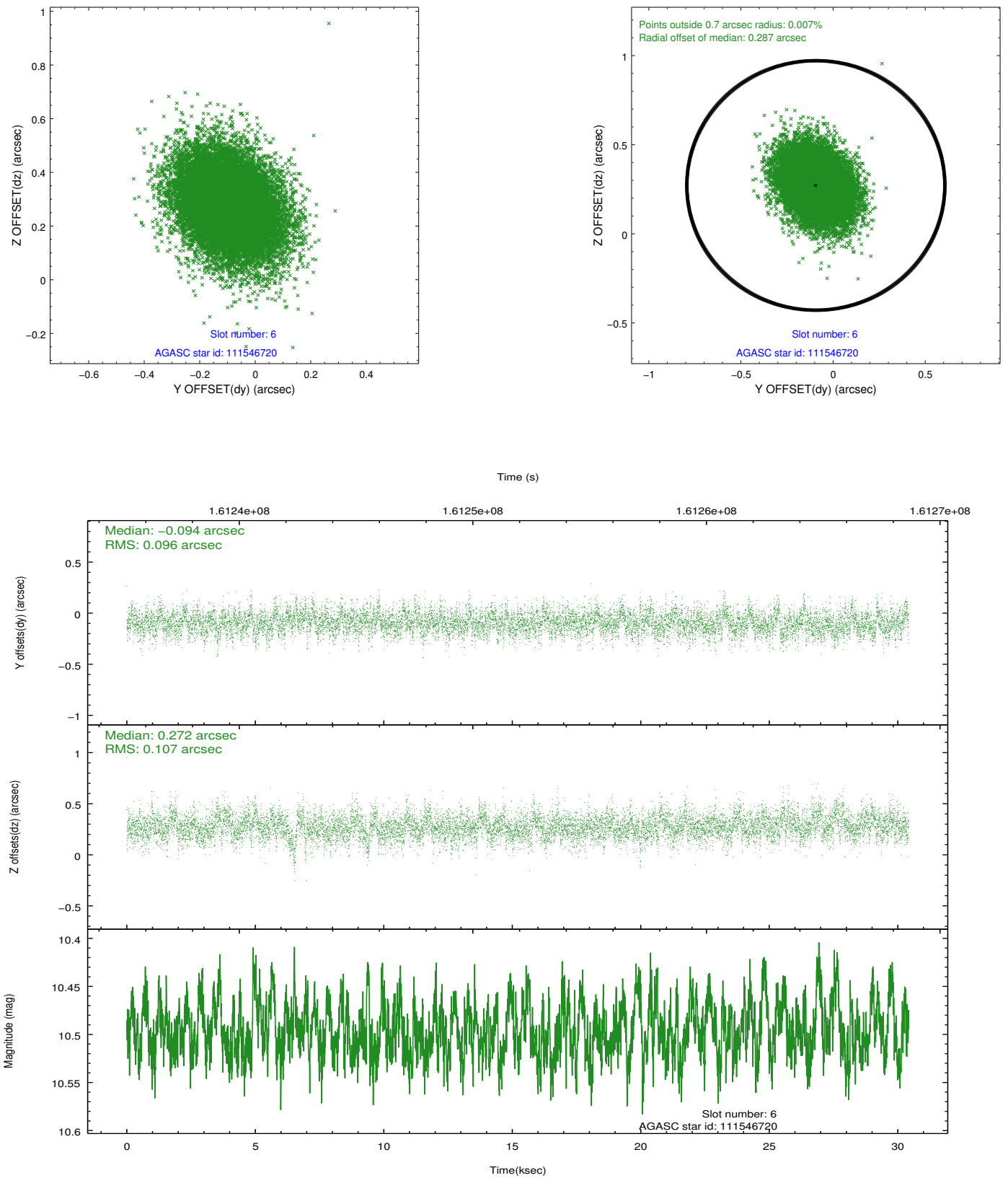
Time (s)



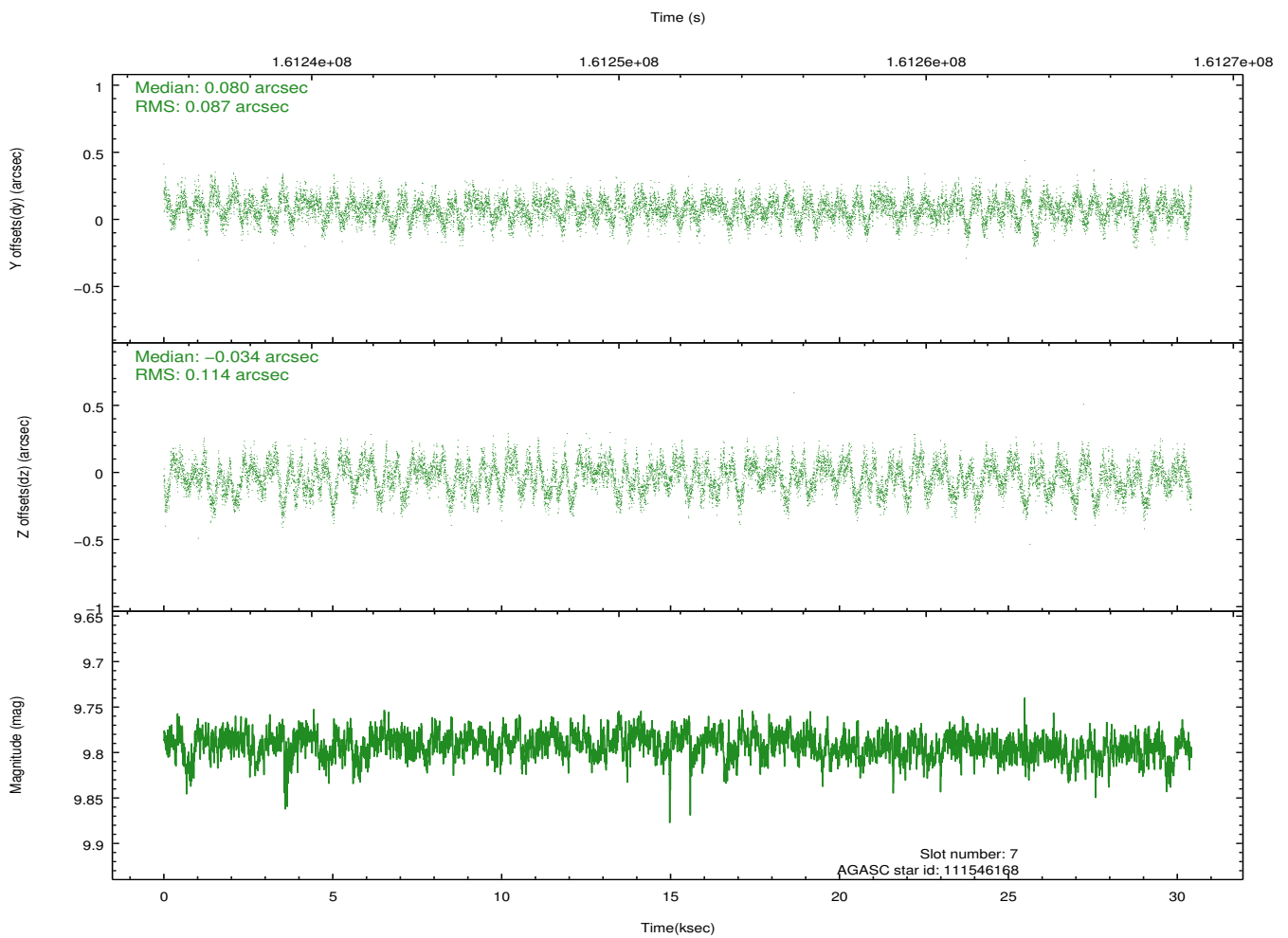
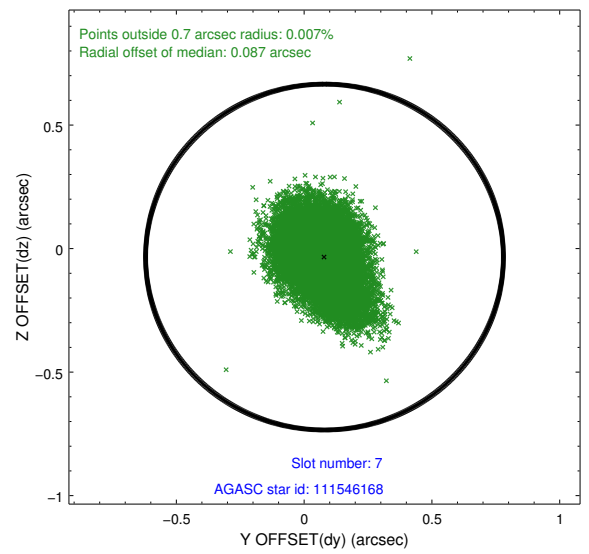
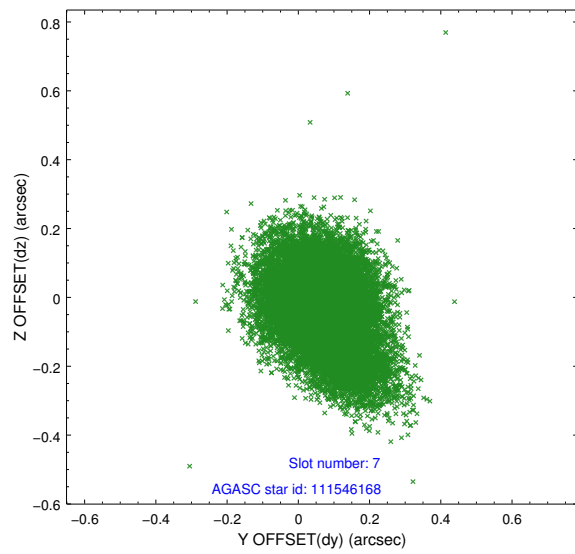
### 2.4.3 Slot 5



## 2.4.4 Slot 6

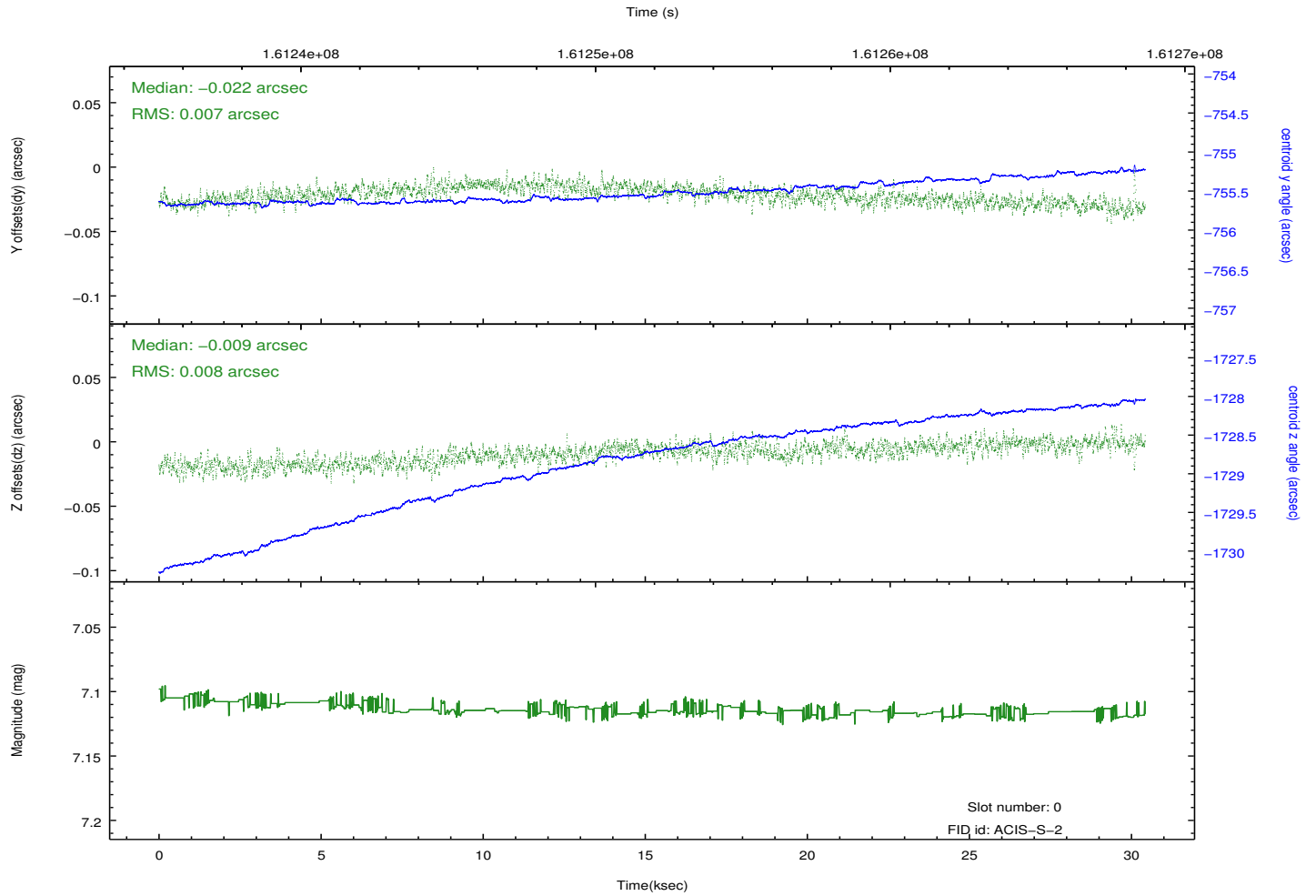
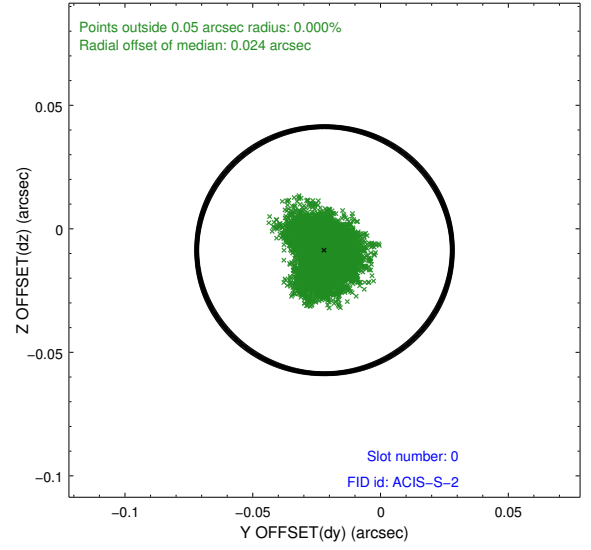
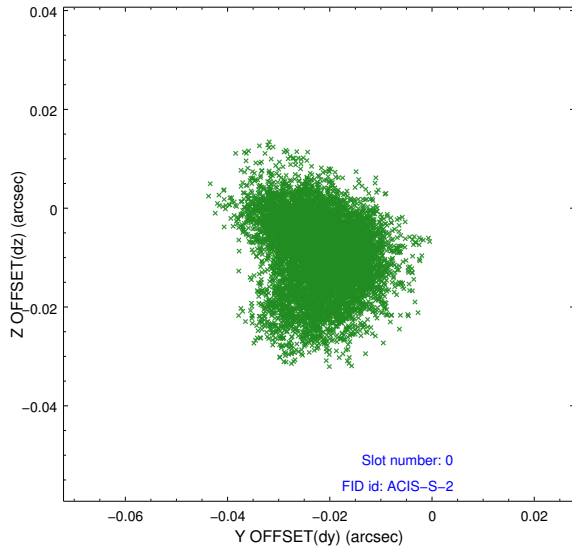


## 2.4.5 Slot 7

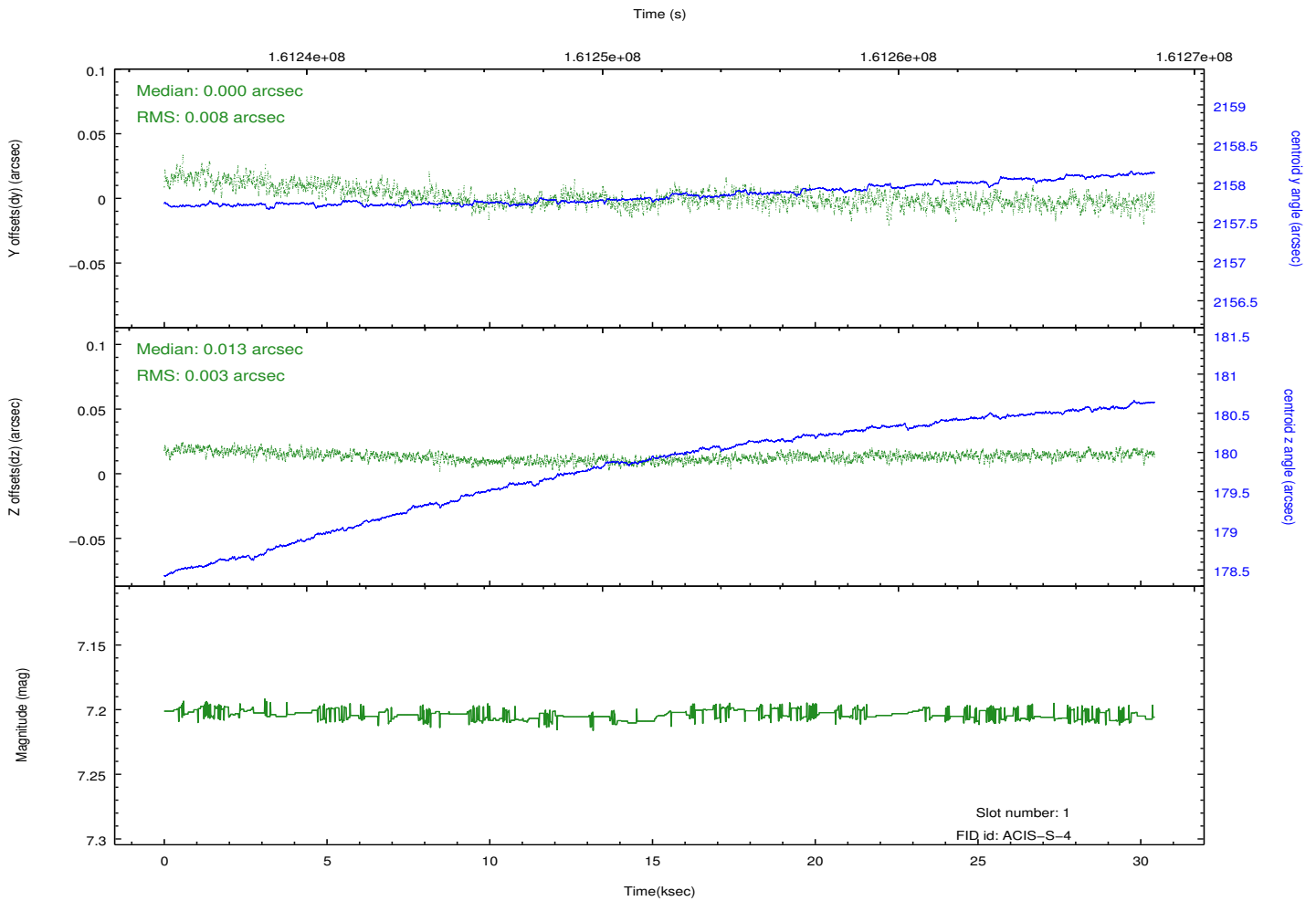
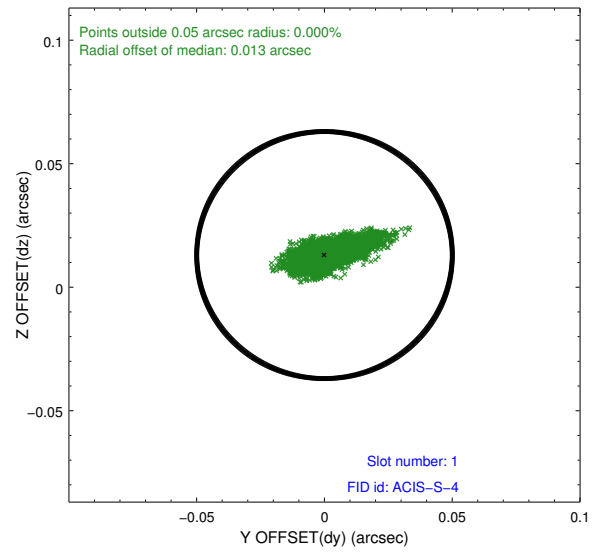
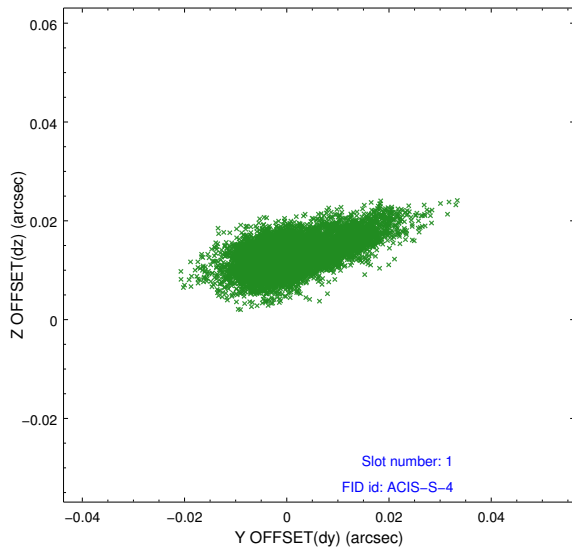


## 2.5 FID Slots

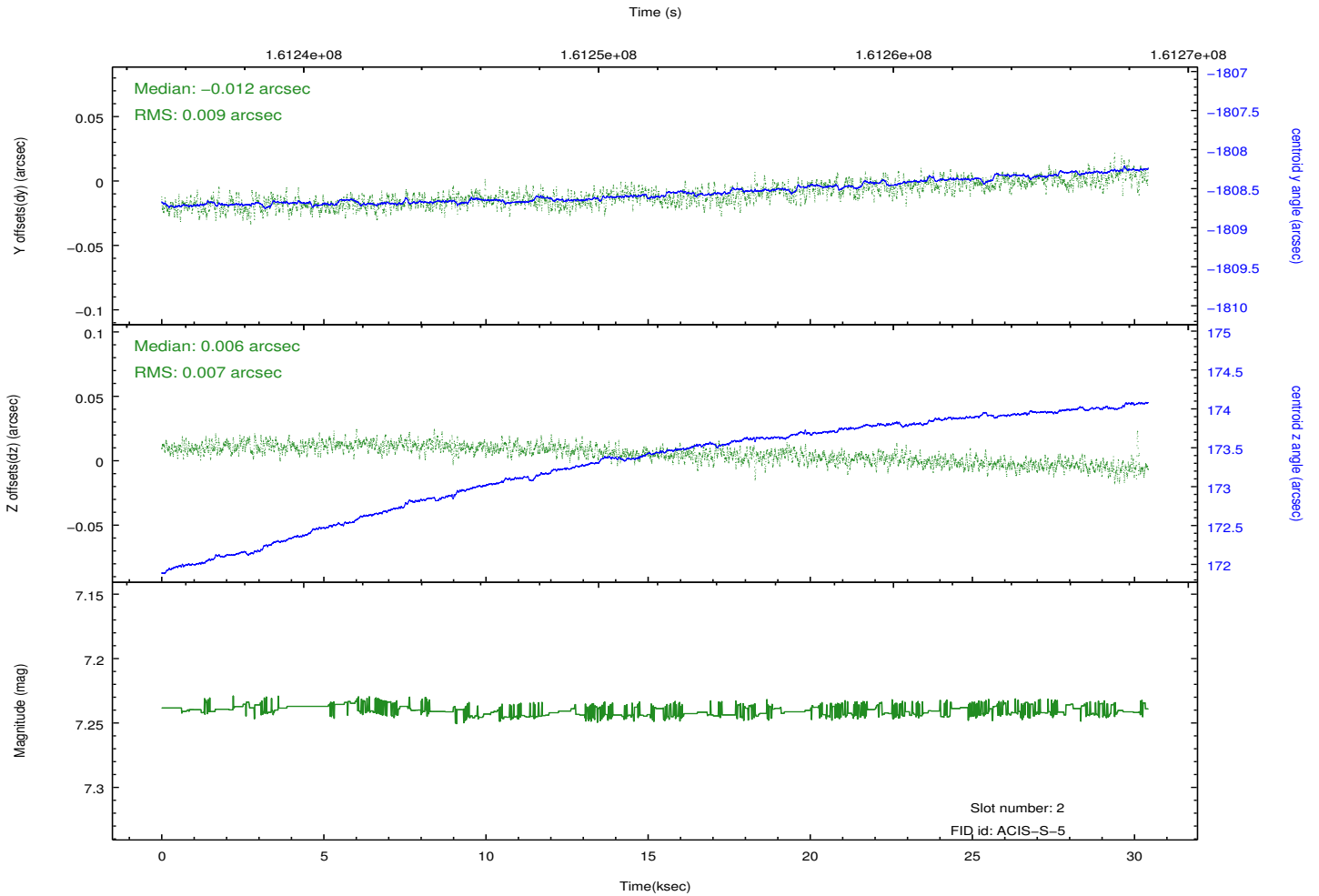
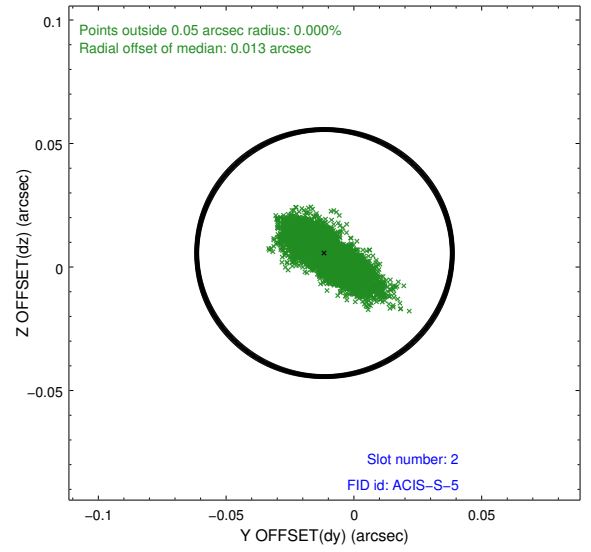
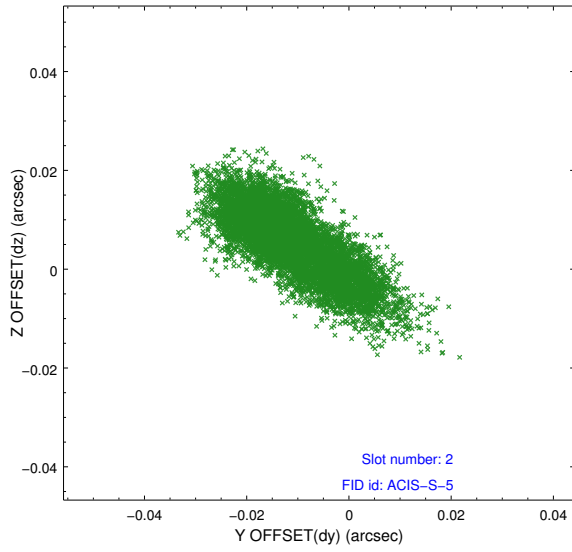
### 2.5.1 Slot 0



## 2.5.2 Slot 1



### 2.5.3 Slot 2



# A Summary

## A.1 Status

V&V Scientist	Jen Lauer
V&V Date (YYYY-MM-DD)	2012.11.05
V&V Edition	1
V&V Disposition and Status	OK
V&V Charge Time	30.415

## A.2 Comments