

V&V Reference Report

L2 ASCDS Version : 8.4.5

Observation 4427 - L2 Version 3
Chandra X-Ray Center

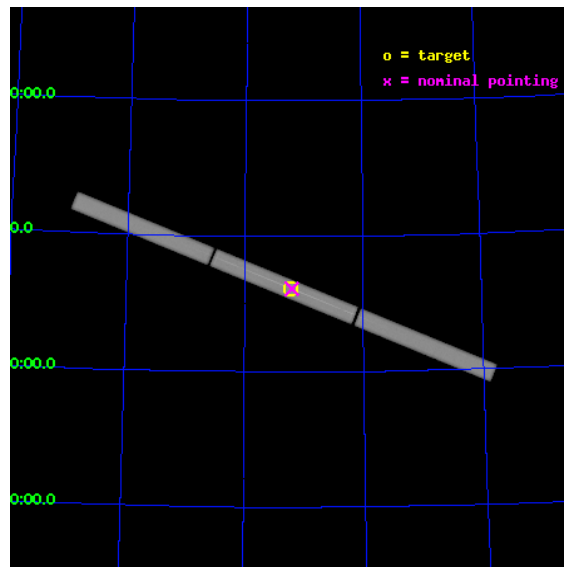
L2 Processing Date : Oct 28 2012

Contents

1	Front	2
2	OBI	3
2.1	OBI	3
2.1.1	Images	3
2.1.2	Parameters	4
2.1.3	Events	4
2.2	Compared Parameters	5
2.3	Aspect	6
2.4	Star Slots	9
2.4.1	Slot 3	9
2.4.2	Slot 4	10
2.4.3	Slot 5	11
2.4.4	Slot 6	12
2.4.5	Slot 7	13
2.5	FID Slots	14
2.5.1	Slot 0	14
2.5.2	Slot 1	15
2.5.3	Slot 2	16
3	Gratings	17
3.1	LETG Arm	17
A	Summary	19
A.1	Status	19
A.2	Comments	19

1 Front

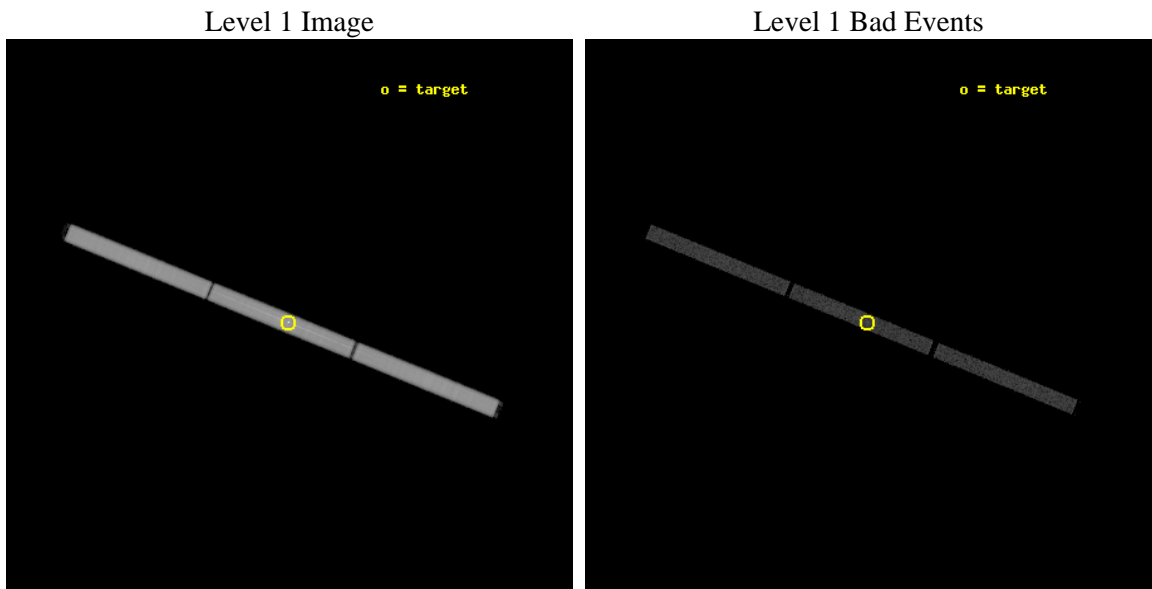
seq_num	700706	Sequence number
obs_id	4427	Observation id
title	CONNECTING THE X-RAY AND UV IONIZED ABSORBERS IN MRK 279	Proposal
observer	Dr Jelle Kaastra	Principal investigator
object	MRK 279	Source name
ra_targ	208.264583	Observer's specified target RA [deg]
dec_targ	69.308111	Observer's specified target Dec [deg]
ra_nom	208.25210705902	Nominal RA [deg]
dec_nom	69.306478406174	Nominal Dec [deg]
roll_nom	202.07901858728	Nominal Roll [deg]
revision	3	Processing version of data
ontime	24724.282297641	[s]
livetime	24566.499800625	Ontime multiplied by DTCOR
l2events	1320842	Number of level 2 events



2 OBI

2.1 OBI

2.1.1 Images



2.1.2 Parameters

obi_num	0	Obi number	sched_exp_time	24578.000000	[s] Scheduled observation exposure time
ascdsver	8.4.5	Processing system revision	ontime	24724.282297641	[s]
caldbver	4.5.2	 	l1events	1828299	Number of level 1 events
date	2012-10-28T13:30:37	Date and time of file creation			
revision	3	Processing version of data			

2.1.3 Events

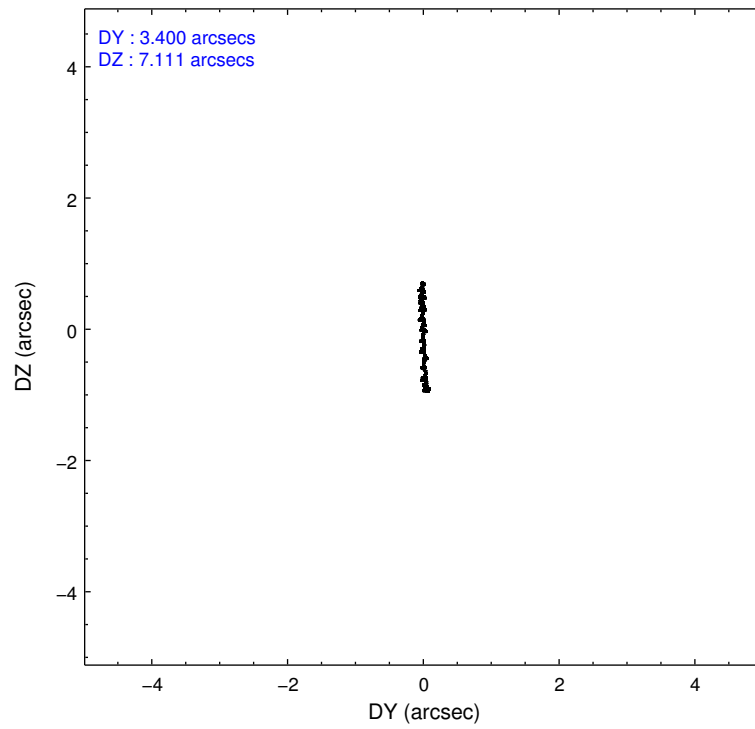
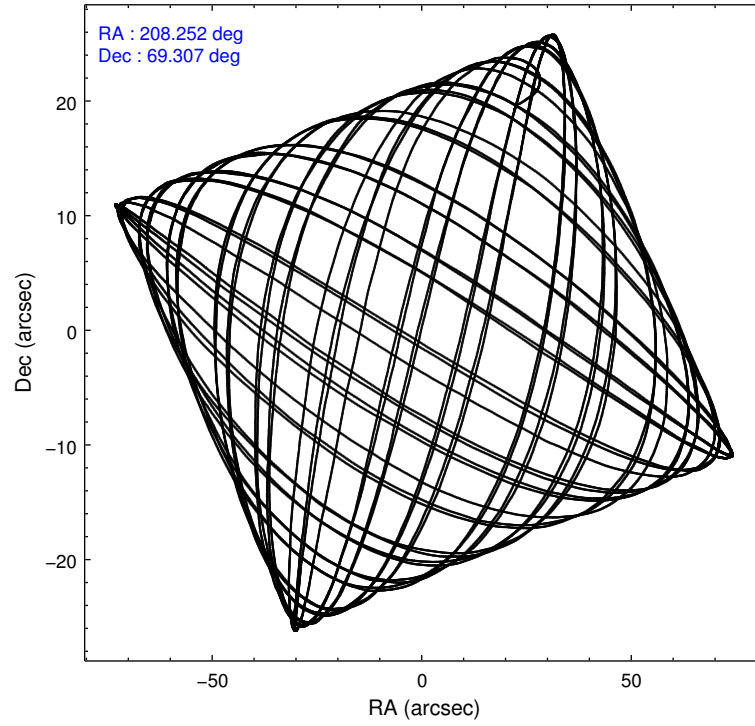
Level 1 Events

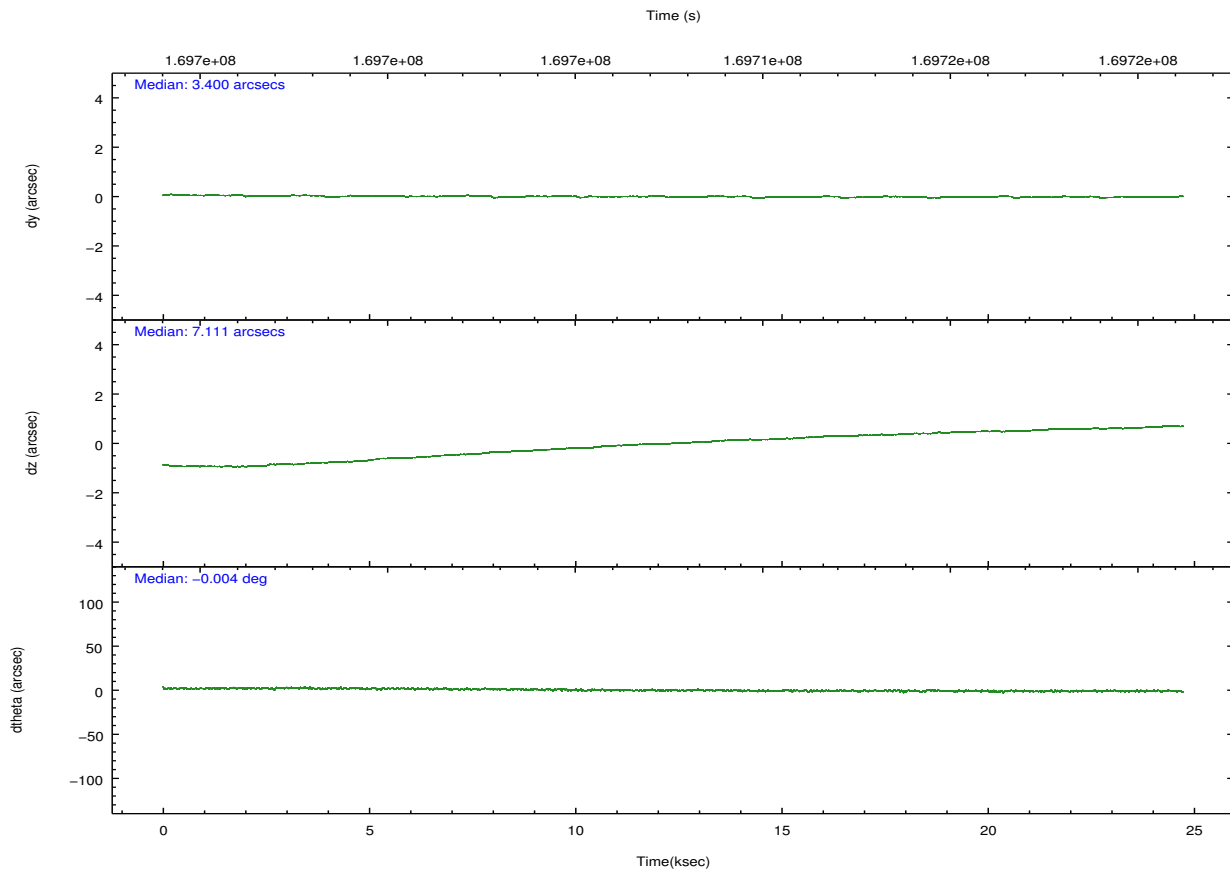
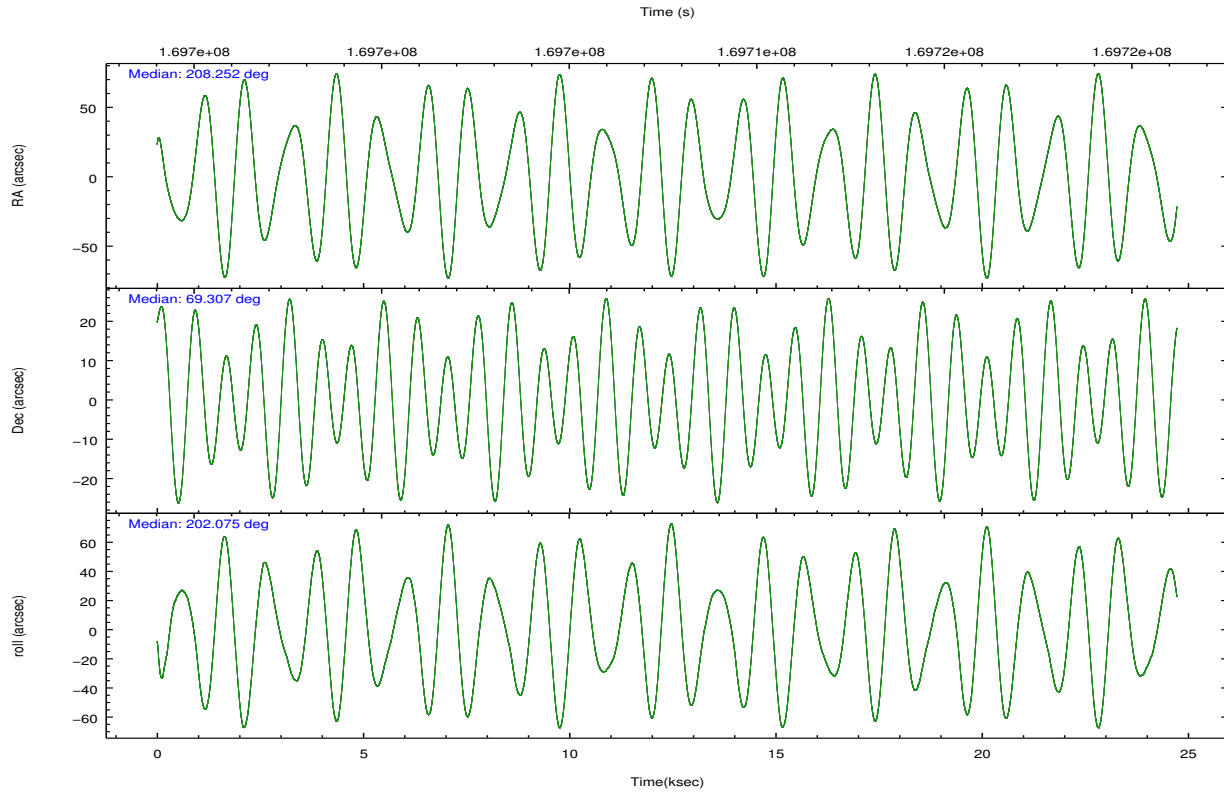
	segment 1	segment 2	segment 3
level 1 events	609189	621939	597171
rejected events	21579	21219	21116
rejected %	3%	3%	3%

2.2 Compared Parameters

Parameter	Planned	Actual	Parameter	Planned	Actual
Instrument	HRC	HRC	Obspar format version number	7	7
Detector	HRC-S	HRC-S	Obspar file type	PREDICTED	ACTUAL
Grating	LETG	LETG	Obspar update status	NONE	UPDATED
Data mode	OBSERVING	OBSERVING			
Observation mode	POINTING	POINTING			
[deg] Pointing RA	208.298736	208.2521070590175			
[deg] Pointing Dec	69.329880	69.30647840617445			
[deg] Pointing Roll	201.968040	202.0790185872809			
[mm] SIM focus pos	-1.429586	-1.428180813131781			
[mm] SIM defocus	0.1037507710433287	0.1051558262725154			
[mm] SIM translation stage pos	250.455976	250.466033080201			
[mm] SIM translation stage offset	0	-0.01005468664627074			
[s] Observation start time (MET)	169695390.184000	169694680.80686			
Observation start date	2003-05-19T01:35:26	2003-05-19T01:24:40			
[s] Observation end time (MET)	169719968.184000	169720616.89545			
Observation end date	2003-05-19T08:25:04	2003-05-19T08:36:56			

2.3 Aspect



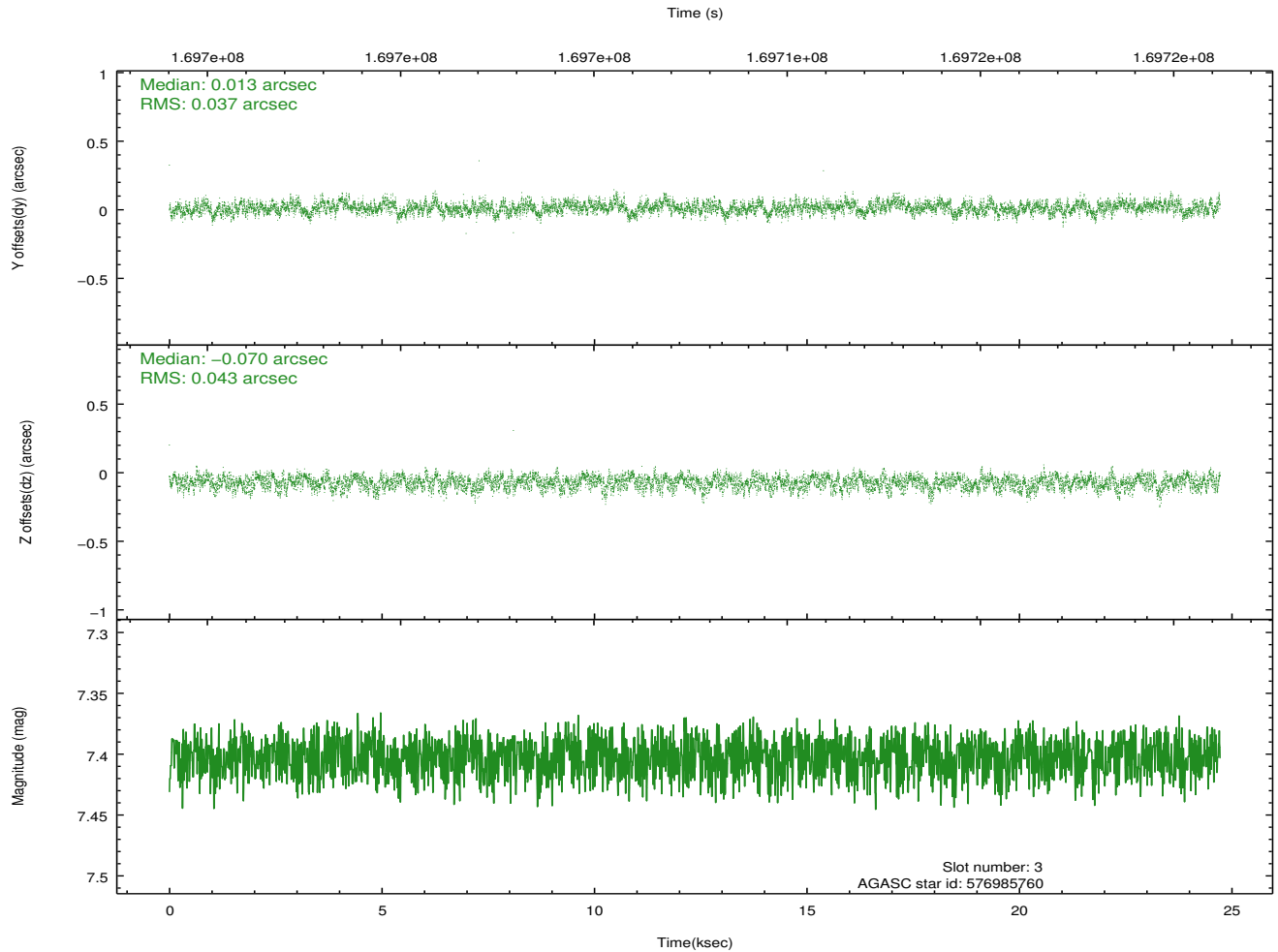
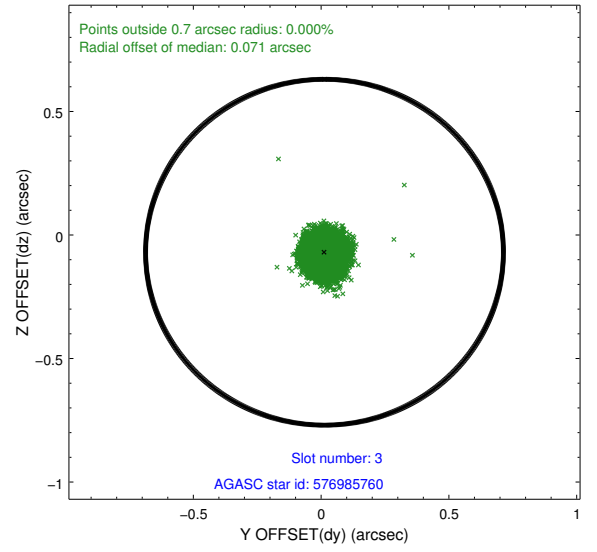
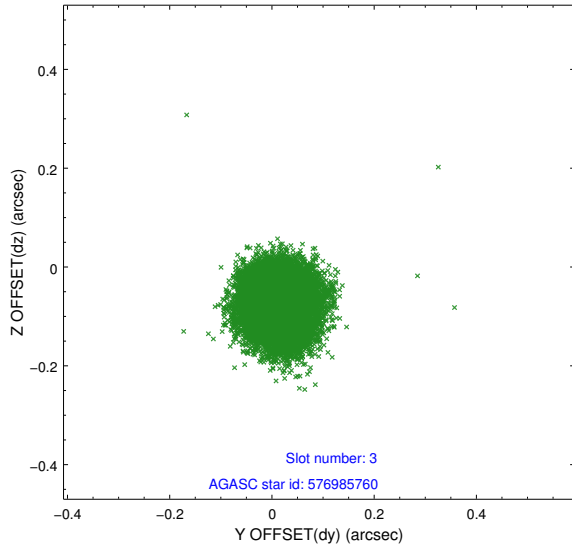


Slot Statistics

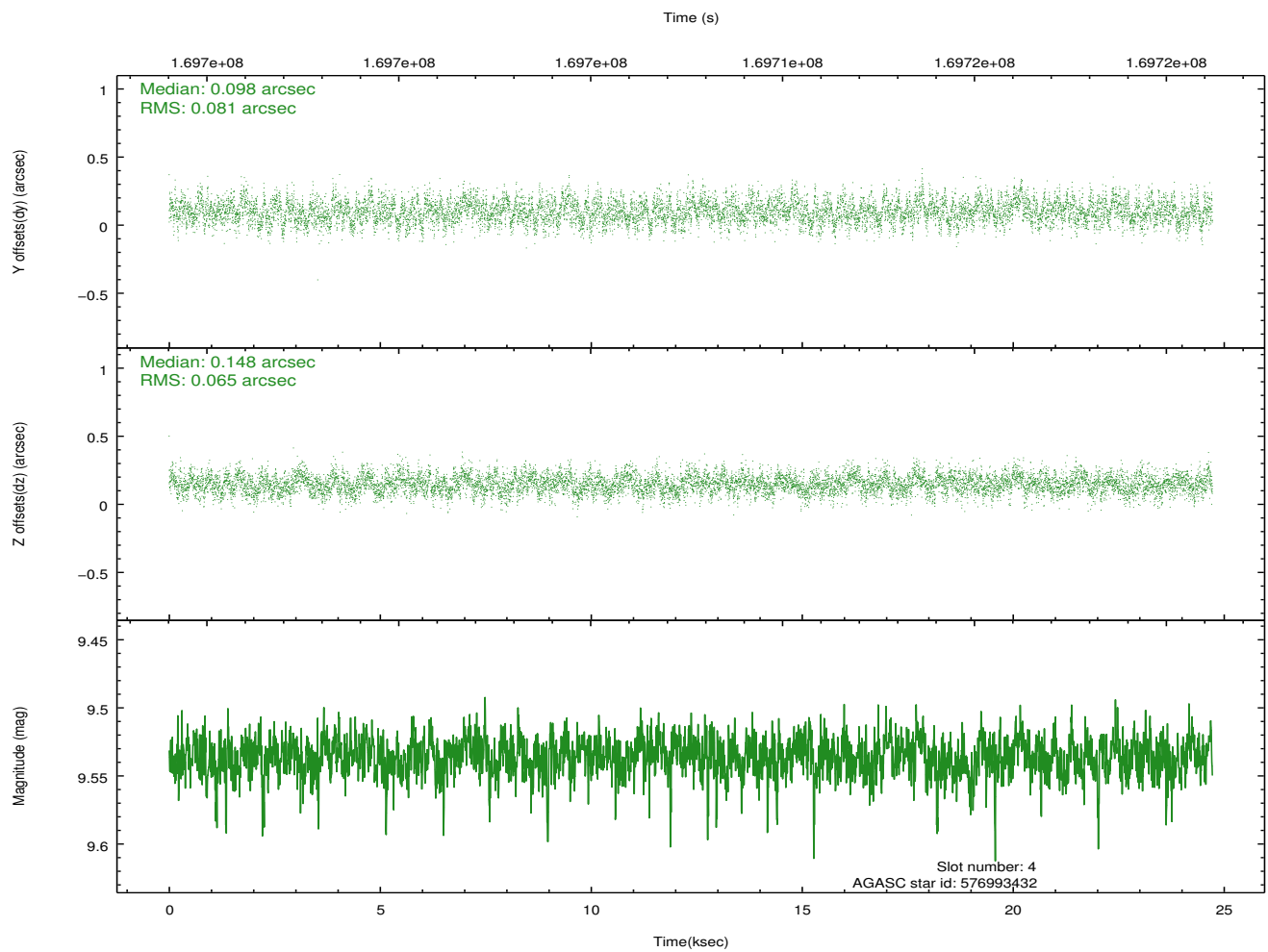
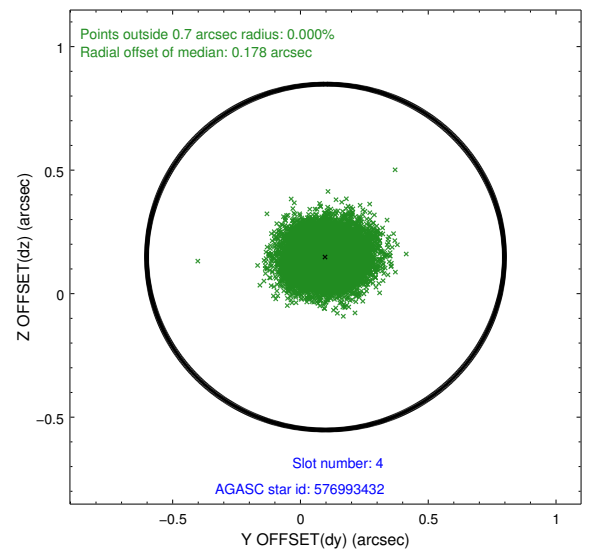
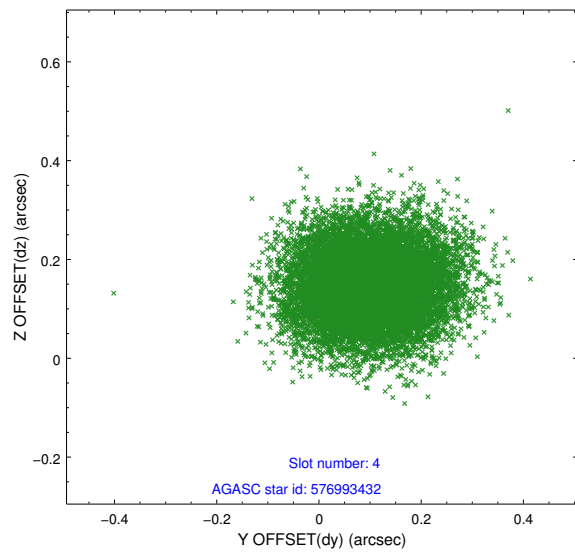
slot	status	id	mag	n_pts	med_dy	med_dz	dr1	dr2	ra	dec	mean_y	mean_z
0	FID	HRC-S-1	6.99	6031	0.139	-0.115	0.017	0.045	0.000000	0.000000	-1157.45	-455.59
1	FID	HRC-S-2	6.98	6031	0.112	-0.097	0.006	0.011	0.000000	0.000000	1242.02	-448.28
2	FID	HRC-S-3	7.01	6030	0.139	-0.090	0.020	0.049	0.000000	0.000000	-1159.96	573.90
3	GUIDE	576985760	7.40	12062	0.013	-0.070	0.061	0.096	207.721529	69.153363	922.17	309.79
4	GUIDE	576993432	9.54	12057	0.098	0.148	0.111	0.178	207.256317	68.646298	2183.63	1760.85
5	GUIDE	577120624	7.14	12062	-0.111	-0.070	0.063	0.098	208.865374	69.935124	-1465.12	-1761.76
6	GUIDE	577121192	7.88	12060	0.004	0.023	0.071	0.115	208.693523	69.547622	-754.43	-542.57
7	GUIDE	577124216	10.10	12028	-0.006	-0.025	0.150	0.249	209.315908	68.857467	-592.86	2061.14

2.4 Star Slots

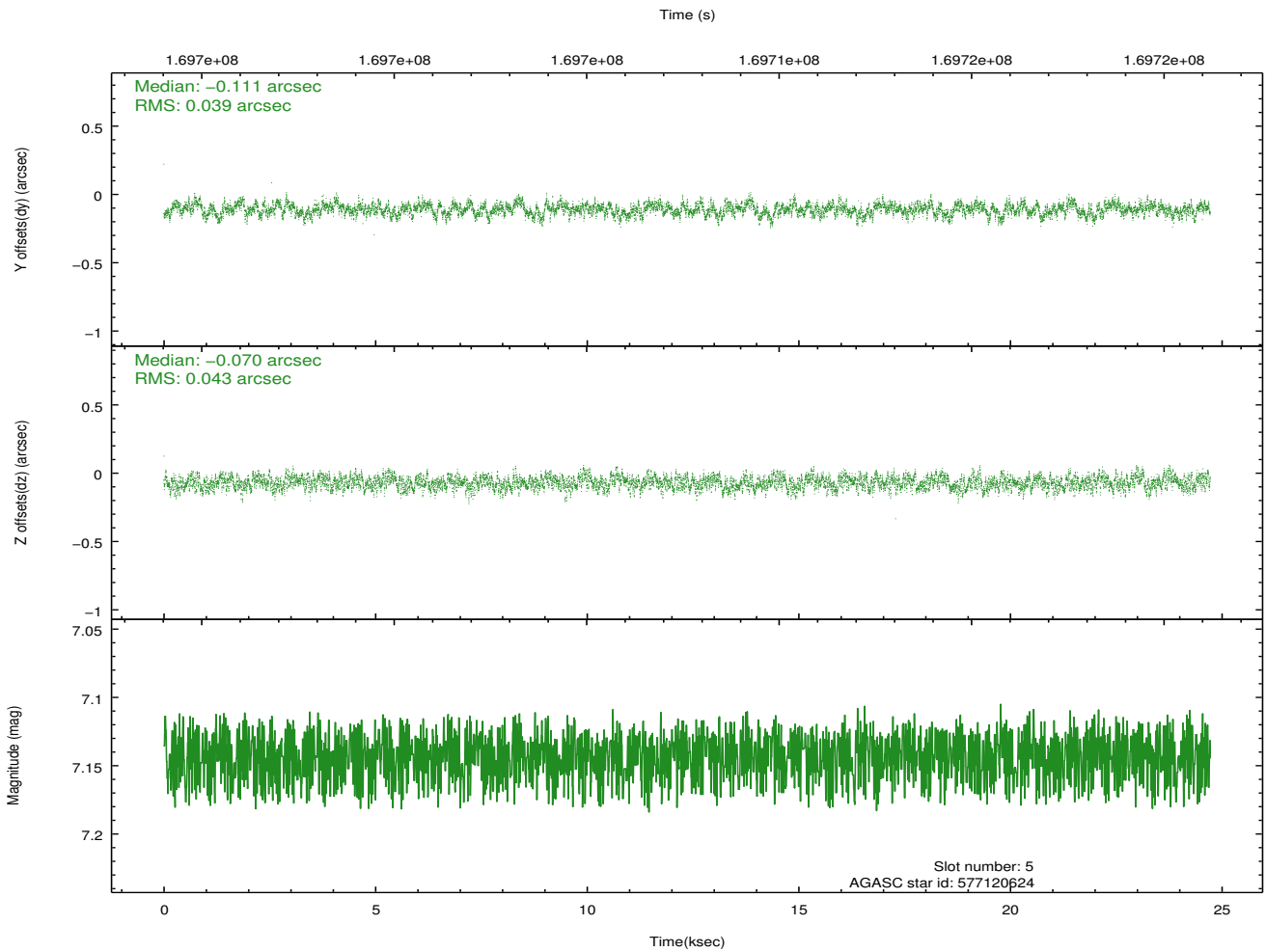
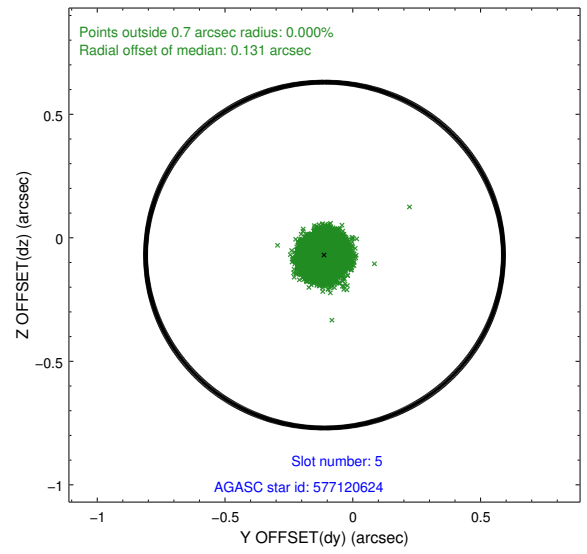
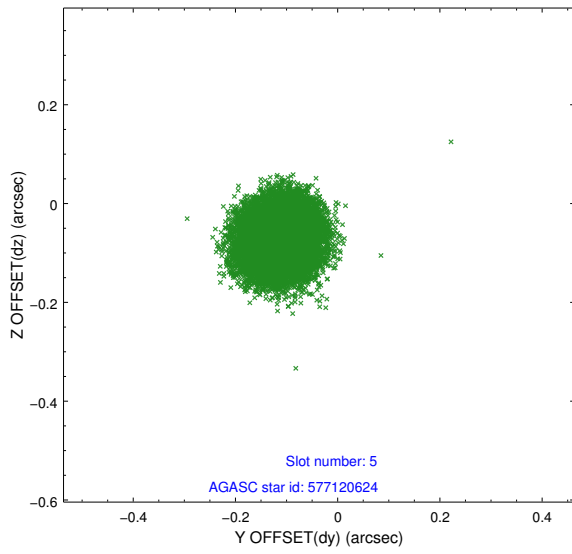
2.4.1 Slot 3



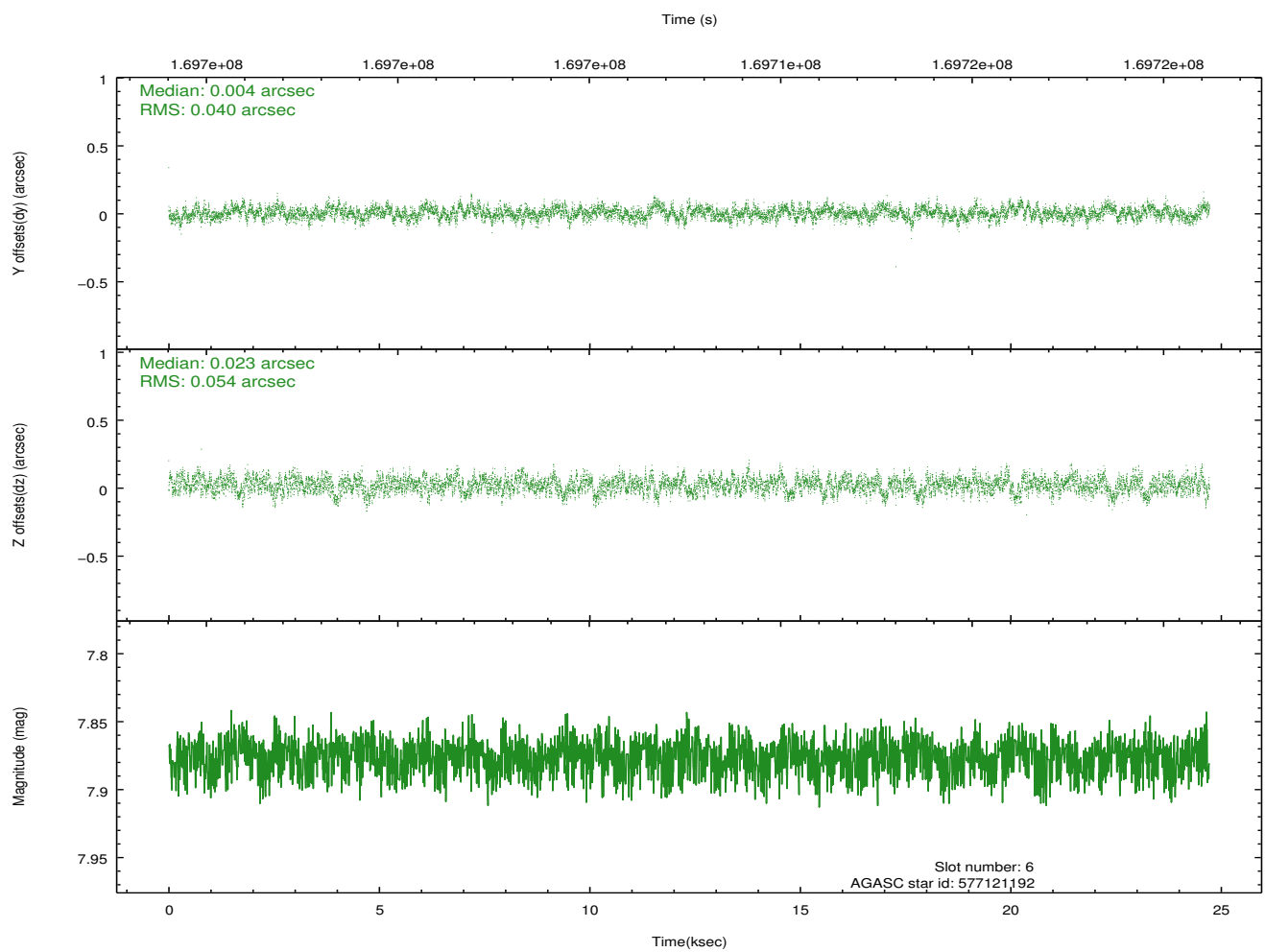
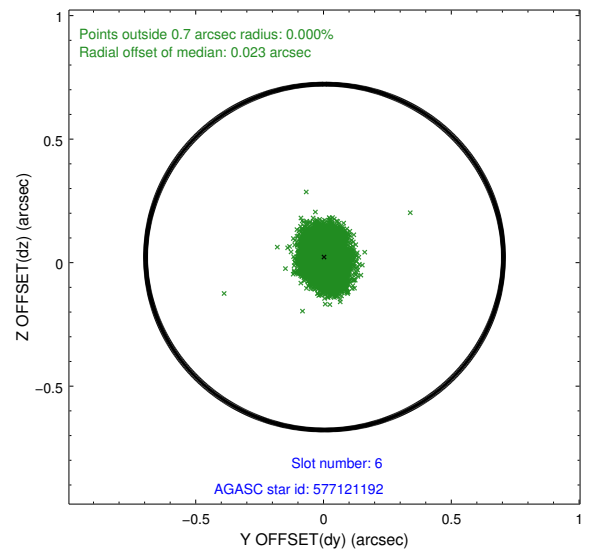
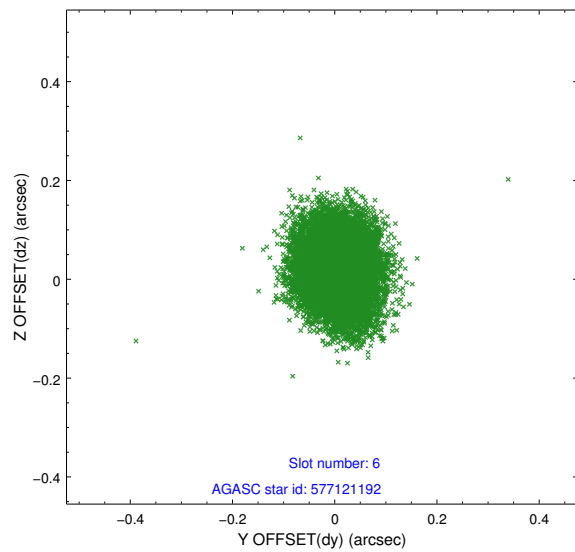
2.4.2 Slot 4



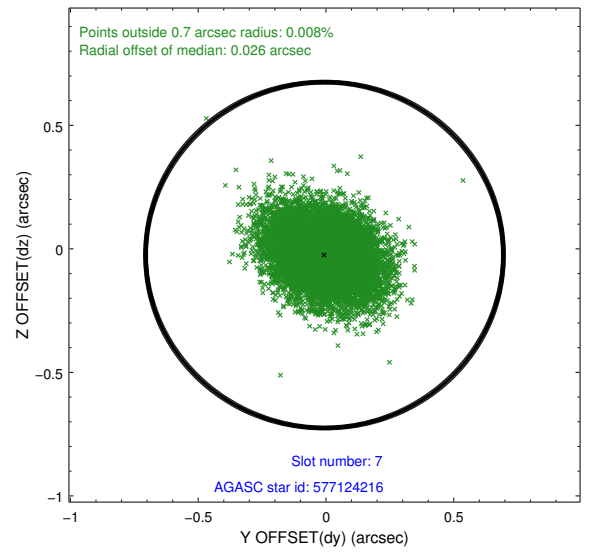
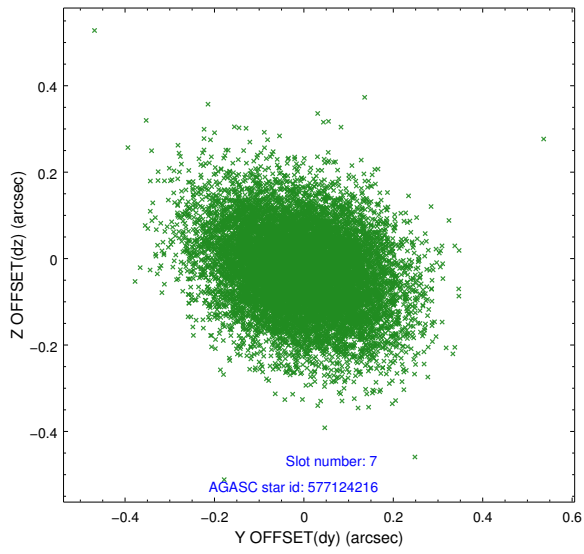
2.4.3 Slot 5



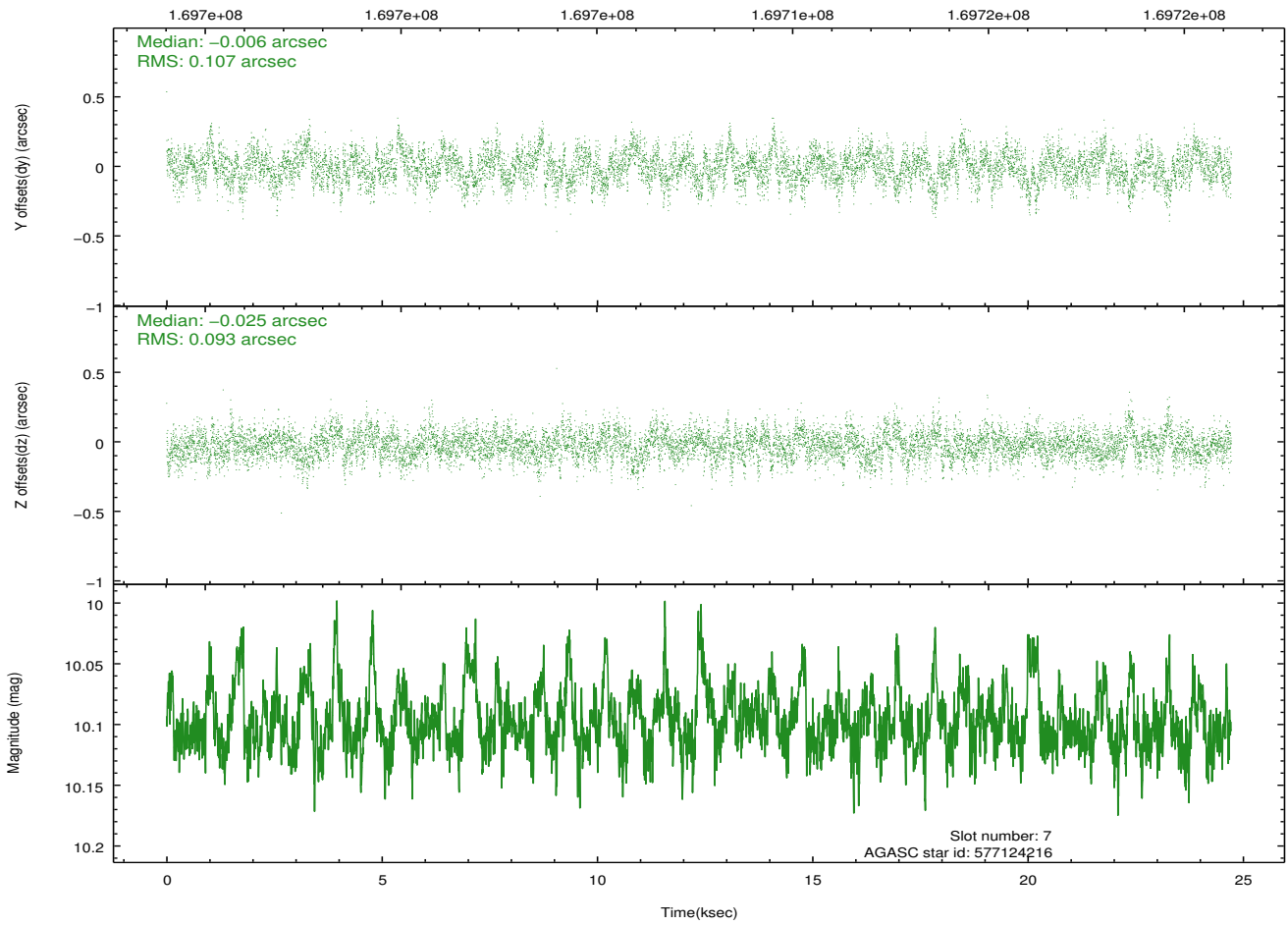
2.4.4 Slot 6



2.4.5 Slot 7

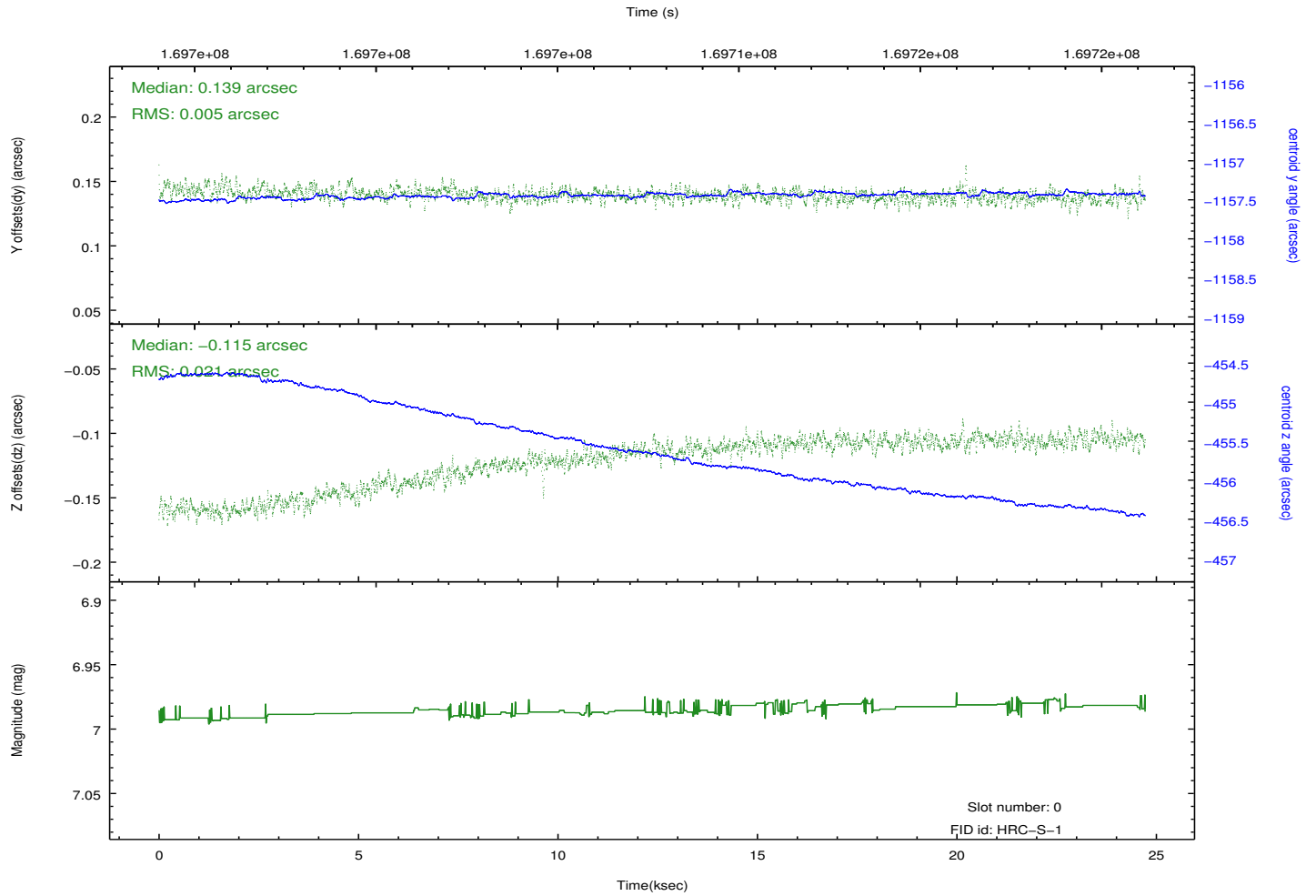
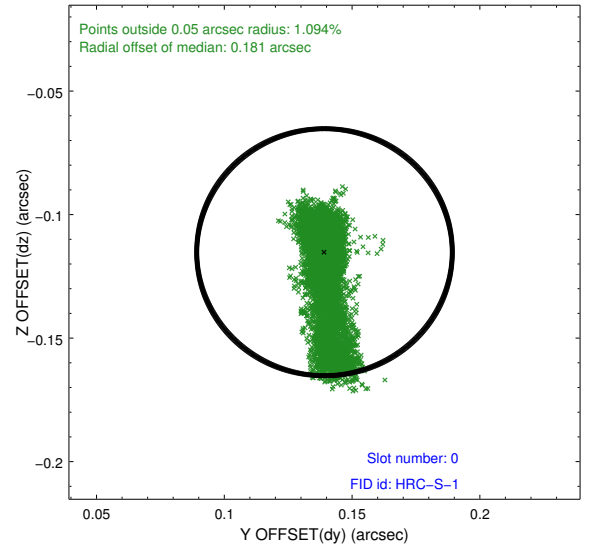
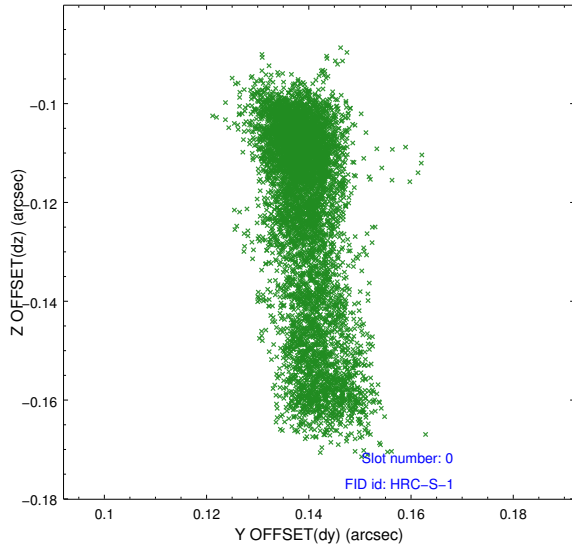


Time (s)

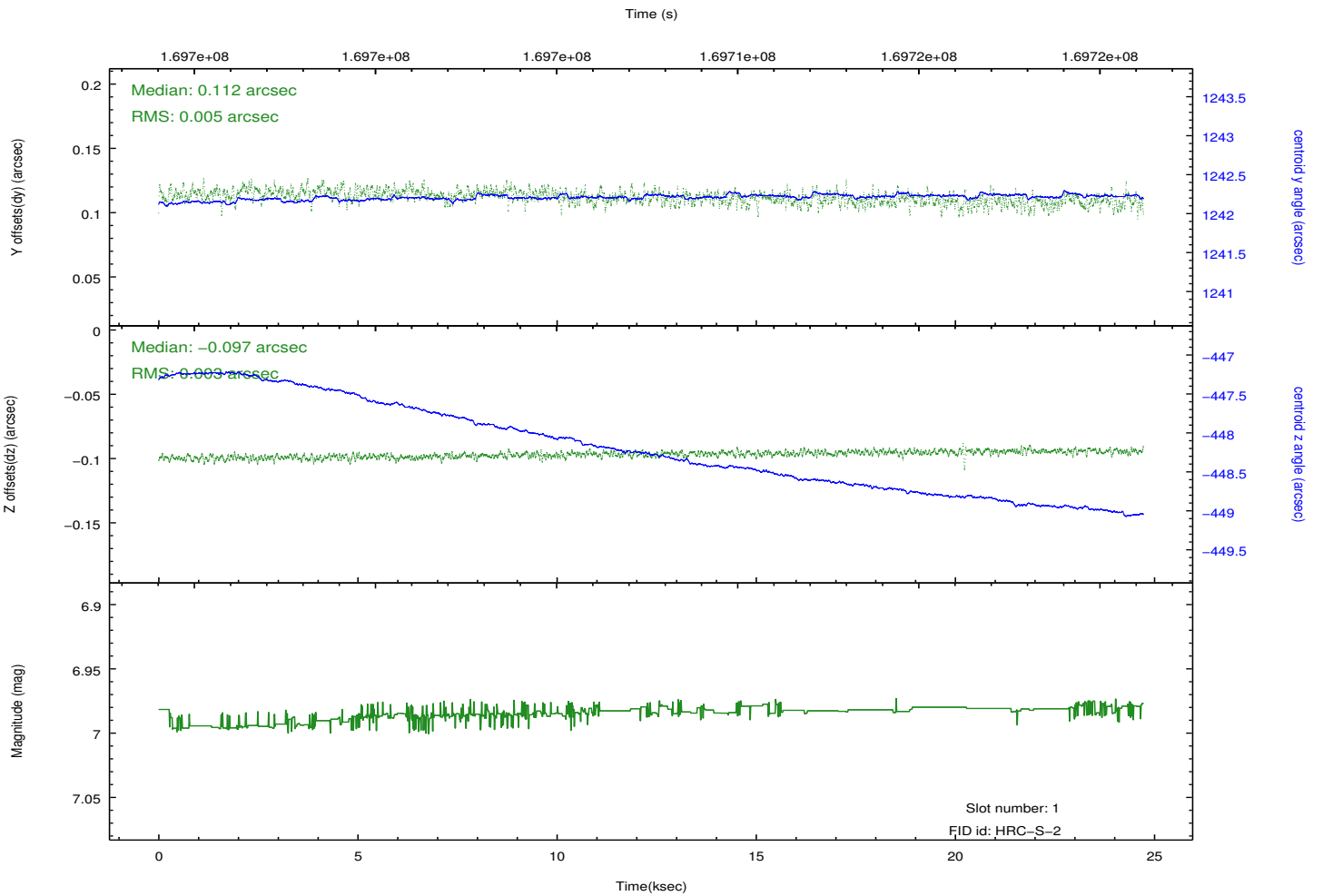
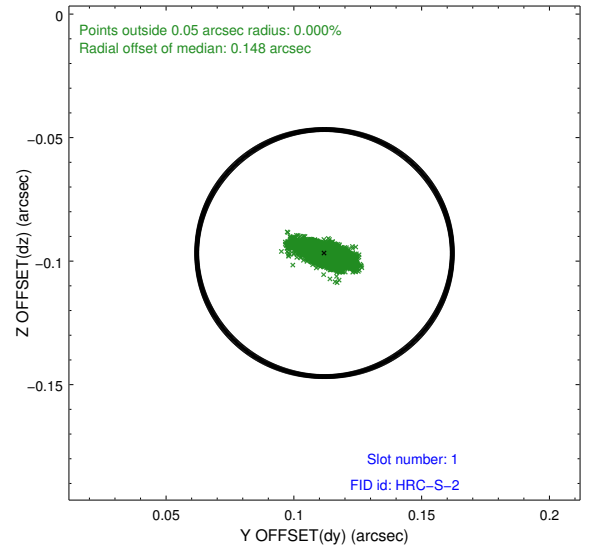
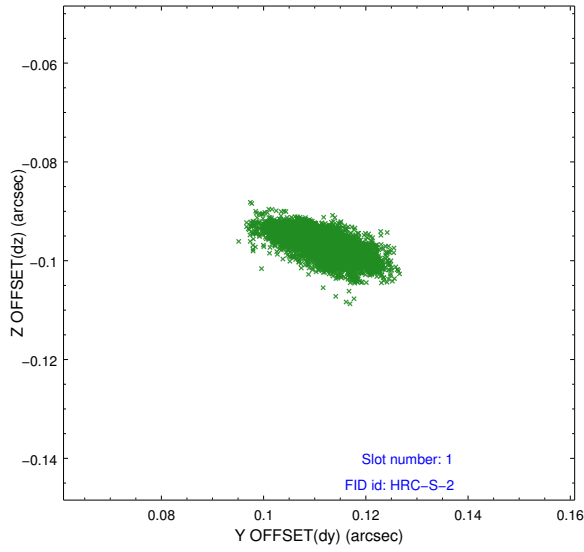


2.5 FID Slots

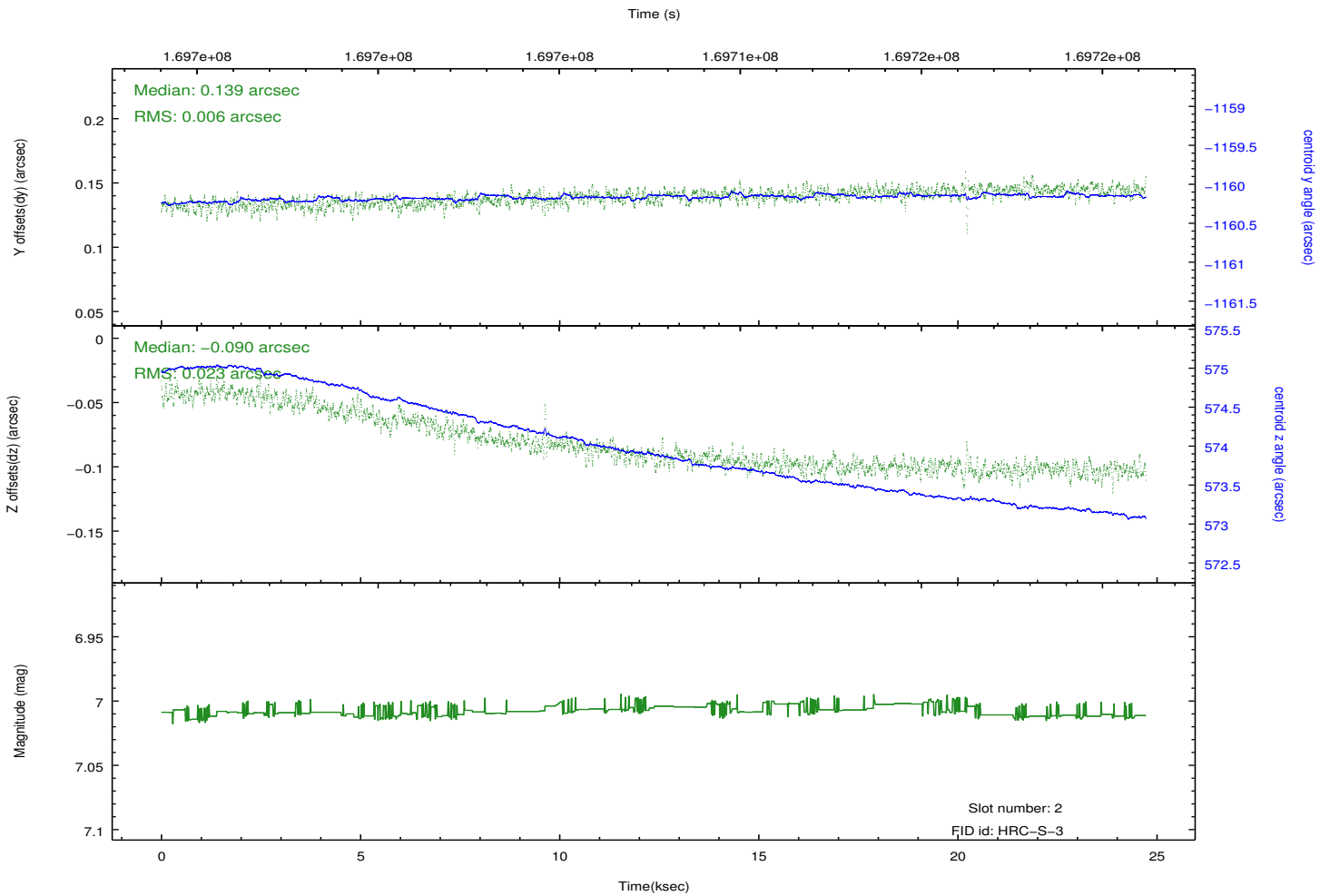
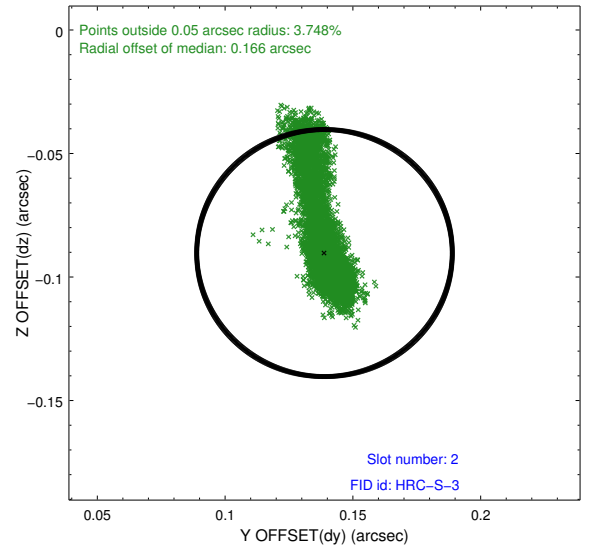
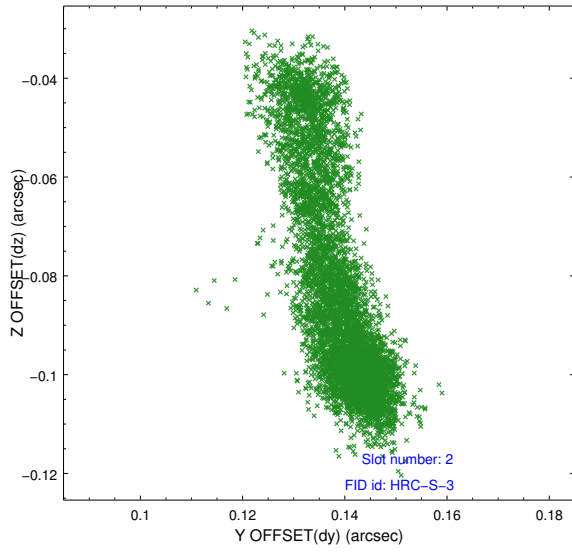
2.5.1 Slot 0



2.5.2 Slot 1

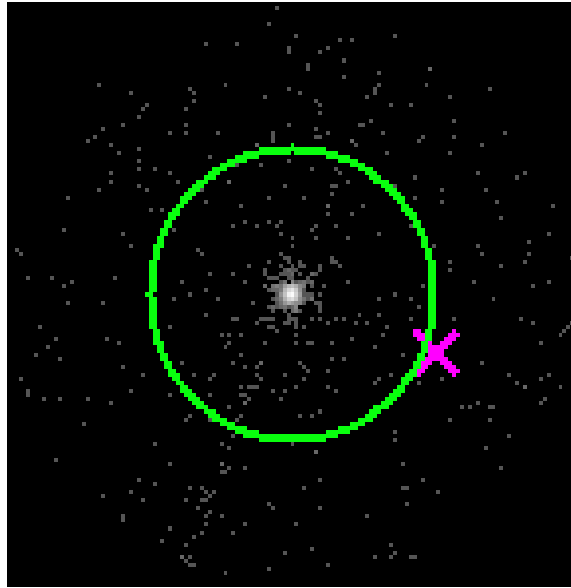


2.5.3 Slot 2



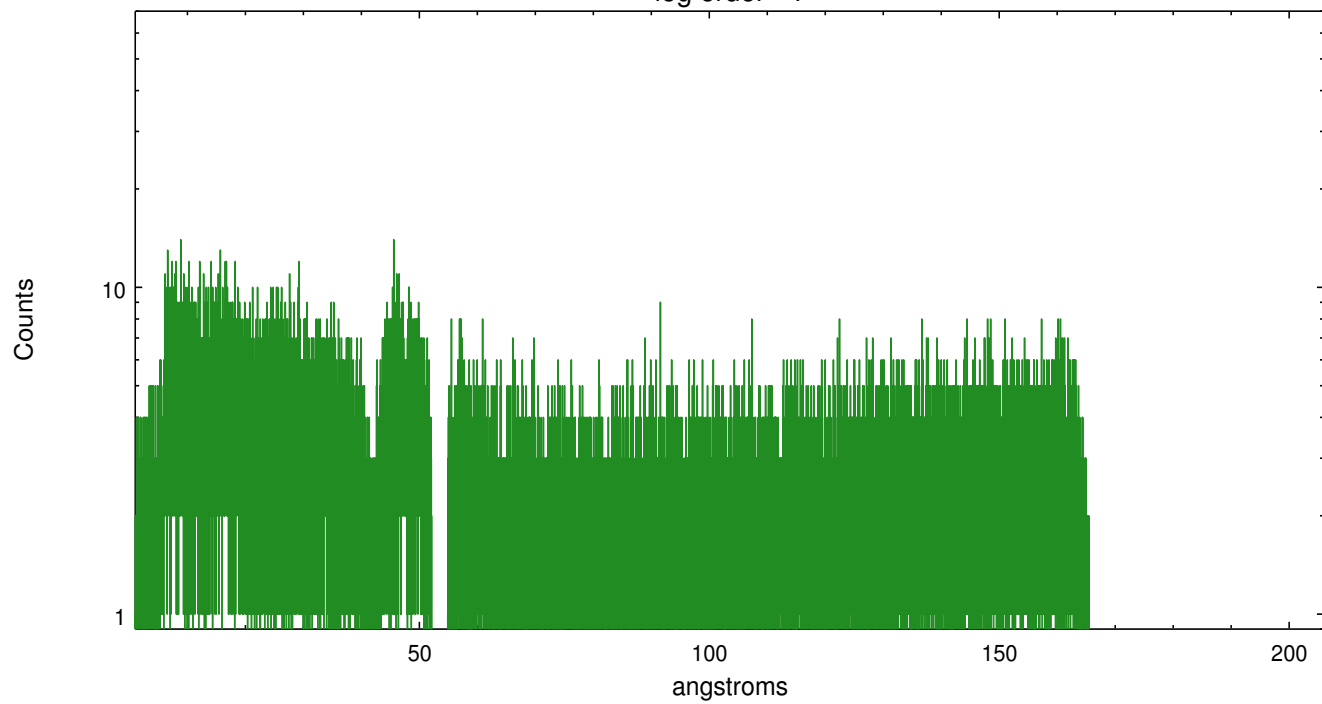
3 Gratings

3.1 LETG Arm

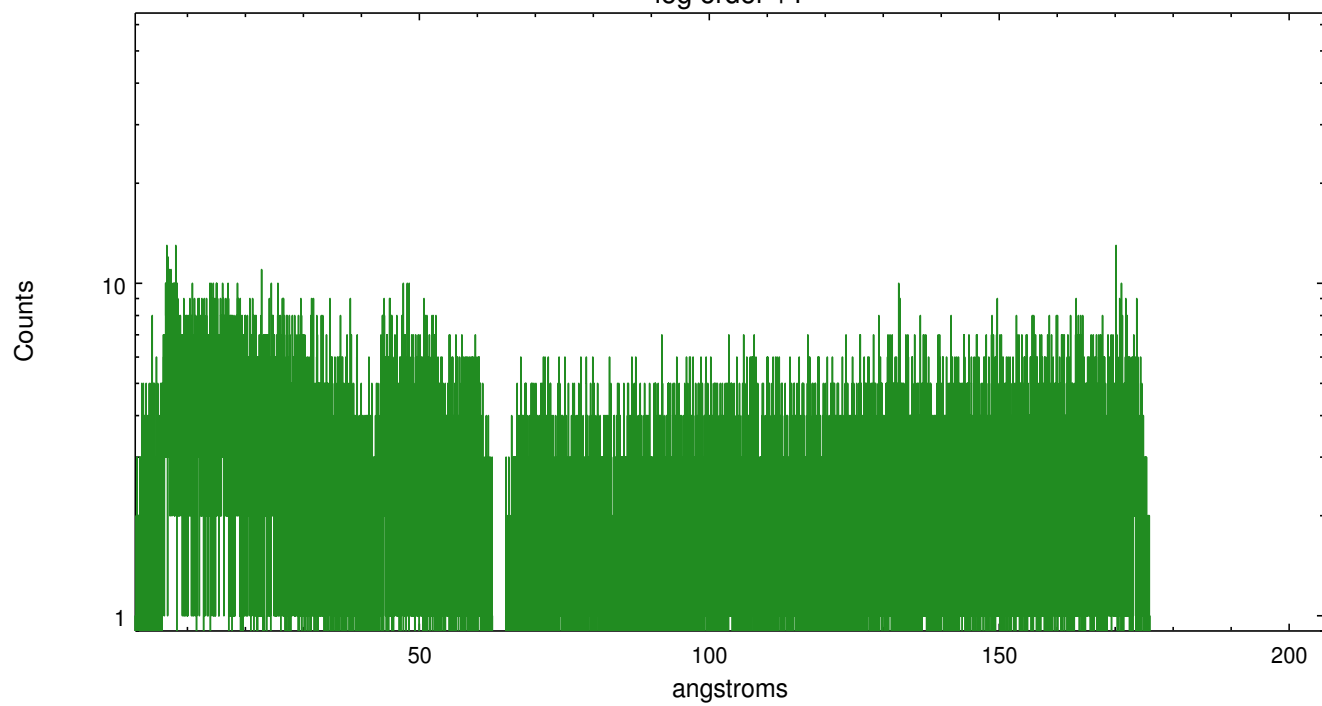


LETG Zero Order

leg order -1



leg order +1



A Summary

A.1 Status

V&V Scientist	Joy Nichols
V&V Date (YYYY-MM-DD)	2012.11.15
V&V Edition	1
V&V Disposition and Status	OK
V&V Charge Time	24.724

A.2 Comments