

# V&V Reference Report

## L2 ASCDS Version : 8.4.5

Observation 4477 - L2 Version 3  
Chandra X-Ray Center

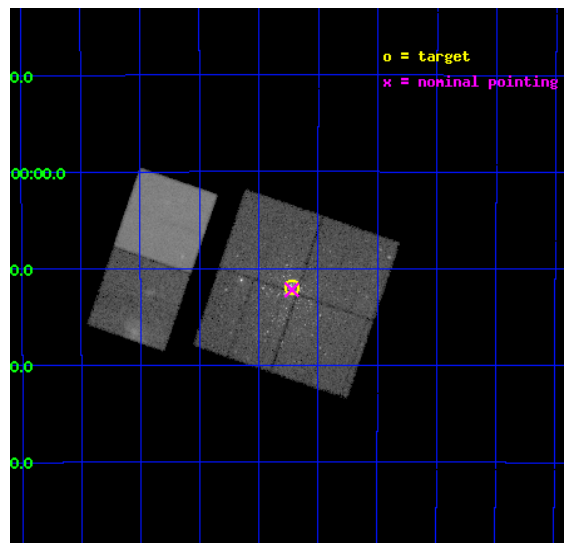
L2 Processing Date : Dec 3 2012

## Contents

<b>1</b>	<b>Front</b>	<b>2</b>
<b>2</b>	<b>OBI</b>	<b>3</b>
2.1	OBI . . . . .	3
2.1.1	Images . . . . .	3
2.1.2	Bias . . . . .	3
2.1.3	Parameters . . . . .	4
2.1.4	Events . . . . .	4
2.2	Compared Parameters . . . . .	5
2.3	Aspect . . . . .	6
2.4	Star Slots . . . . .	9
2.4.1	Slot 3 . . . . .	9
2.4.2	Slot 4 . . . . .	10
2.4.3	Slot 5 . . . . .	11
2.4.4	Slot 6 . . . . .	12
2.4.5	Slot 7 . . . . .	13
2.5	FID Slots . . . . .	14
2.5.1	Slot 0 . . . . .	14
2.5.2	Slot 1 . . . . .	15
2.5.3	Slot 2 . . . . .	16
<b>A</b>	<b>Summary</b>	<b>17</b>
A.1	Status . . . . .	17
A.2	Comments . . . . .	17

# 1 Front

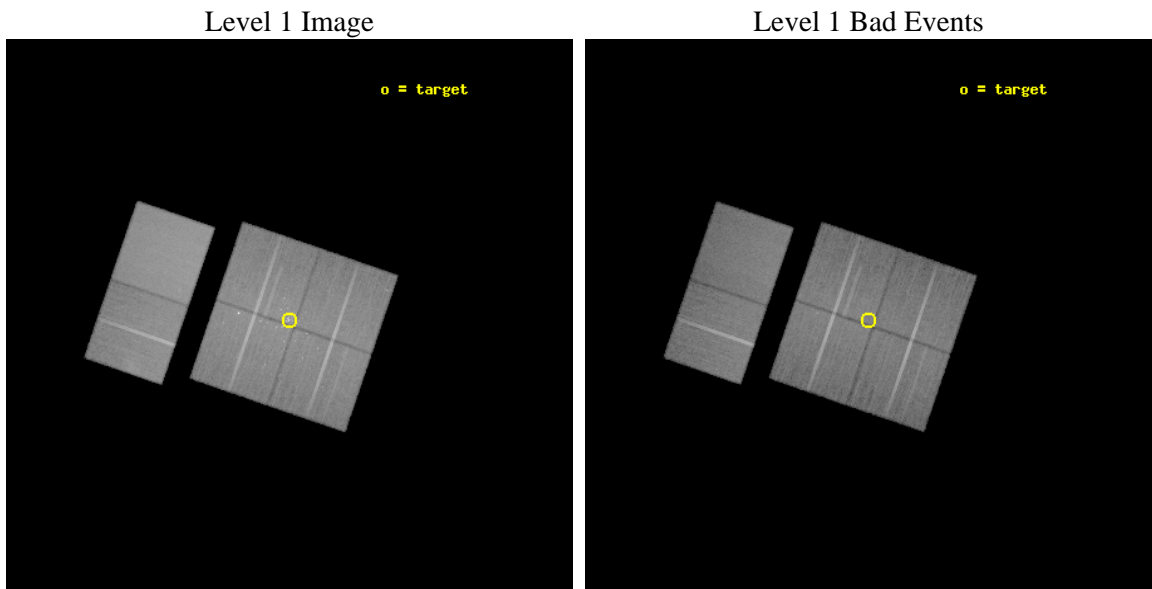
seq_num	200246	Sequence number
obs_id	4477	Observation id
title	ACIS Observations of the Massive Star-Forming Complex NGC 6357	Pro
observer	Professor Gordon Garmire	Principal investigator
object	NGC 6357 Field I	Source name
dtcycle	0	&#160
cycle	P	events from which exps? Prim/Second/Both
ra_targ	261.180833	Observer's specified target RA [deg]
dec_targ	-34.198889	Observer's specified target Dec [deg]
ra_nom	261.18044836678	Nominal RA [deg]
dec_nom	-34.203539005216	Nominal Dec [deg]
roll_nom	288.91109555762	Nominal Roll [deg]
revision	3	Processing version of data
ontime	38172.676886976	Sum of GTIs [s]
livetime	37689.311467406	Livetime [s]
ontime0	38179.15884757	Sum of GTIs [s]
ontime1	38166.194816917	Sum of GTIs [s]
ontime2	38169.4359366	Sum of GTIs [s]
ontime3	38172.676886976	Sum of GTIs [s]
ontime6	38159.713065386	Sum of GTIs [s]
ontime7	38172.6768969	Sum of GTIs [s]
l2events	356640	Number of level 2 events



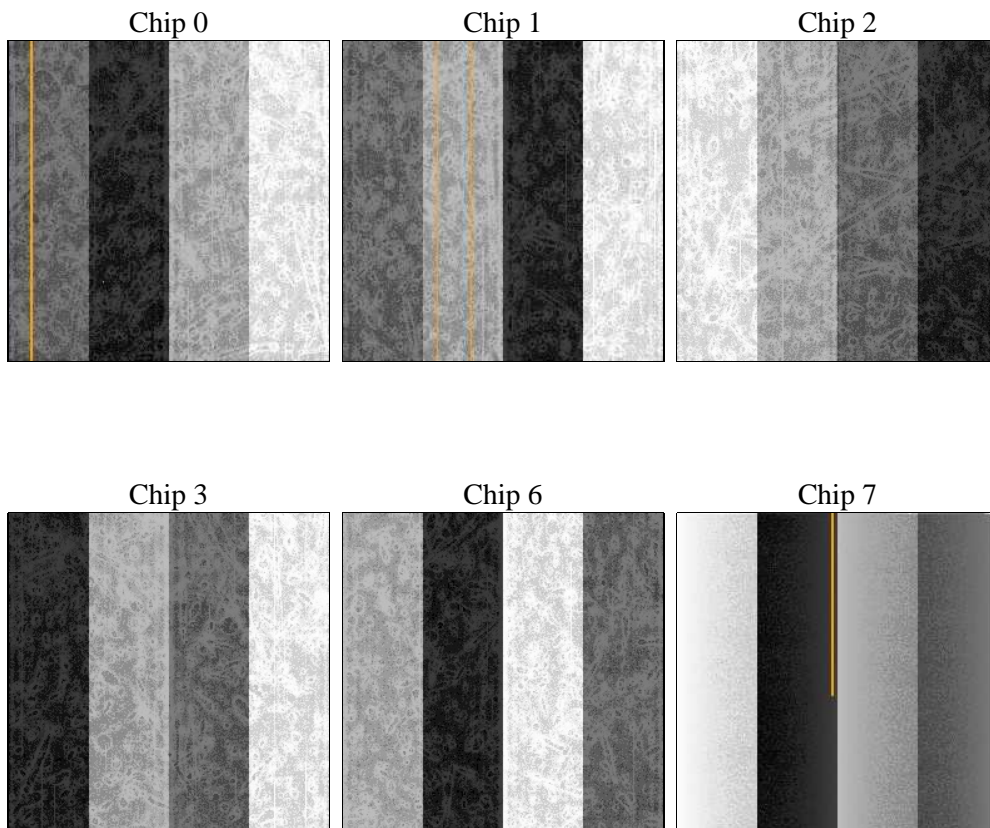
## 2 OBI

### 2.1 OBI

#### 2.1.1 Images



#### 2.1.2 Bias



### 2.1.3 Parameters

obi_num	1	Obi number	sched_exp_time	38000.000000	[s] Scheduled observation exposure time
ascdsver	8.4.5	Processing system revision	ontime	38172.676886976	Sum of GTIs [s]
caldbver	4.5.2	&#160	ontime0	38179.15884757	Sum of GTIs [s]
date	2012-12-03T21:59:04	Date and time of file creation	ontime1	38166.194816917	Sum of GTIs [s]
revision	3	Processing version of data	ontime2	38169.4359366	Sum of GTIs [s]
			ontime3	38172.676886976	Sum of GTIs [s]
			ontime6	38159.713065386	Sum of GTIs [s]
			ontime7	38172.6768969	Sum of GTIs [s]
			l1events	1877523	Number of level 1 events

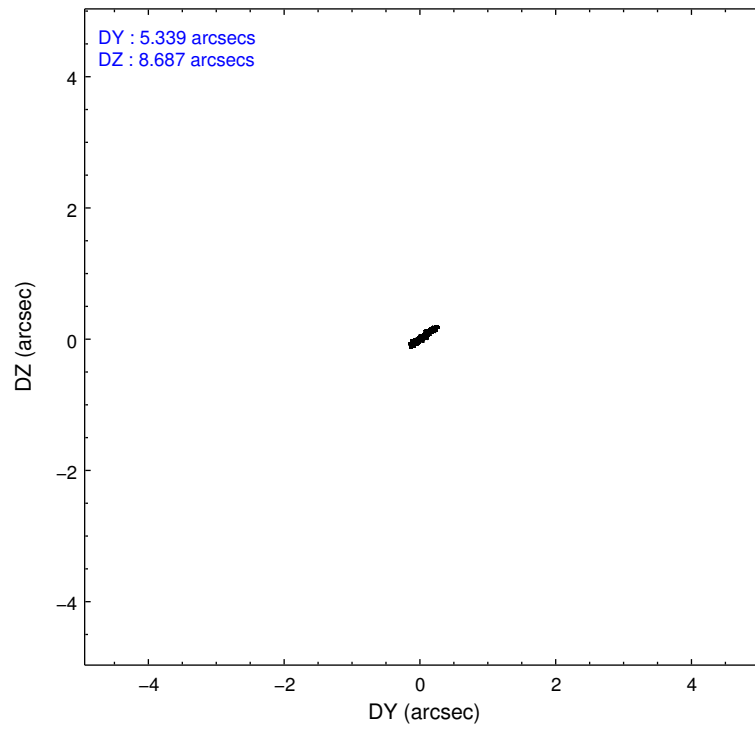
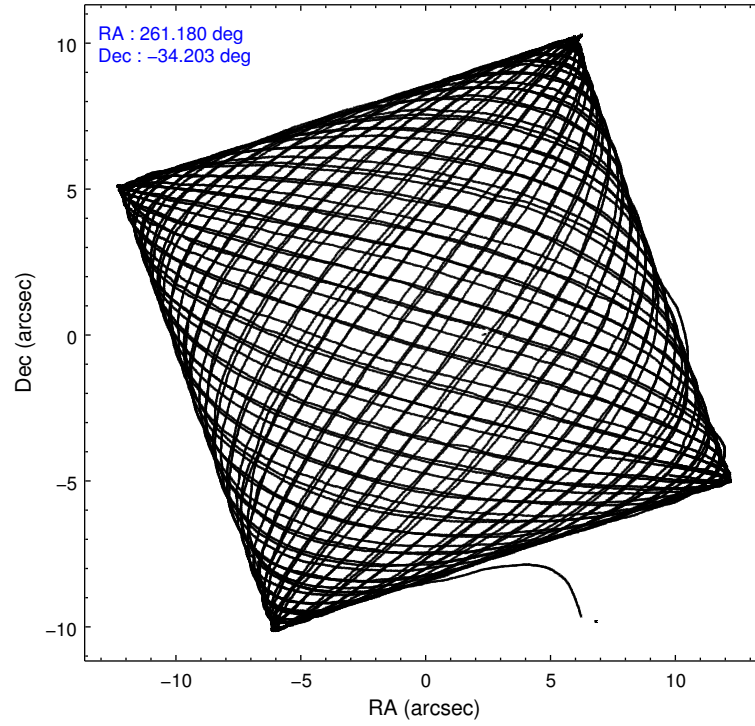
### 2.1.4 Events

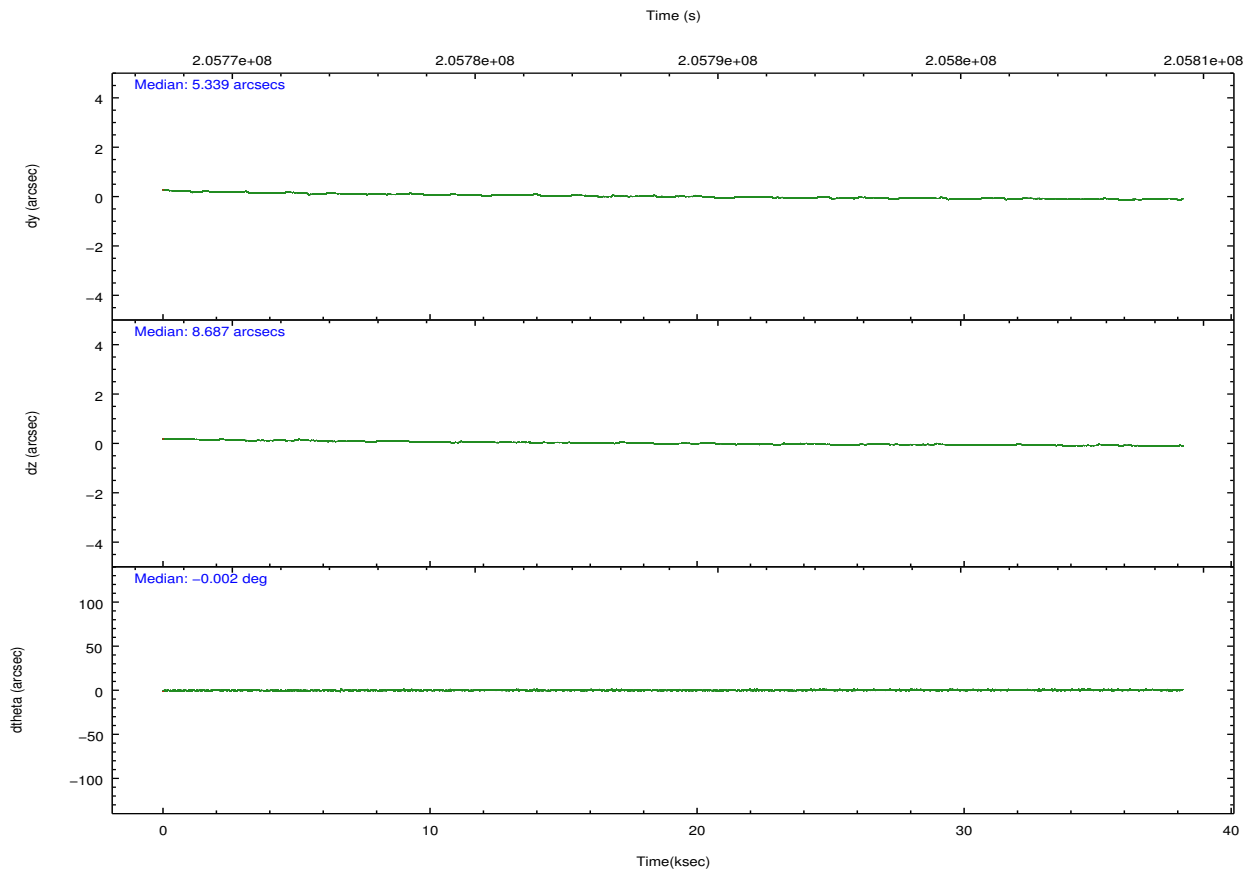
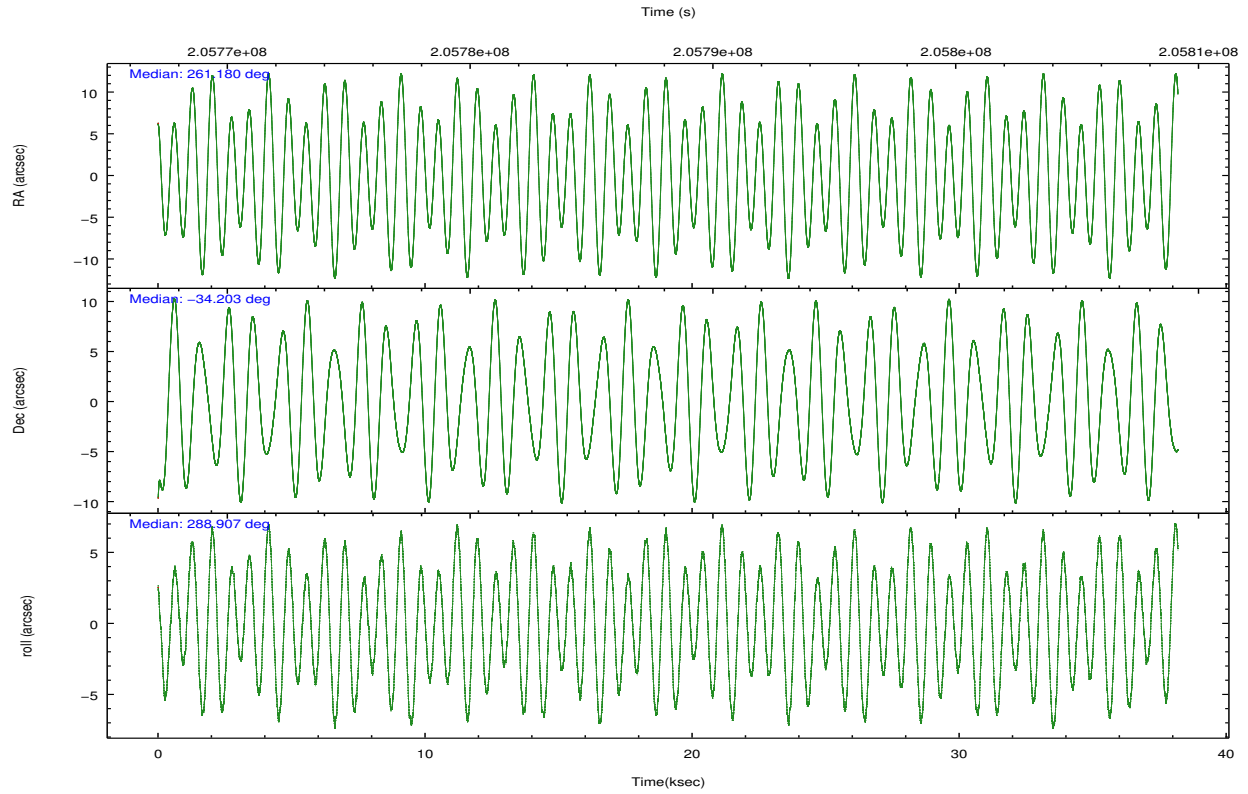
	ccd 0	ccd 1	ccd 2	ccd 3	ccd 6	ccd 7		ccd 0	ccd 1	ccd 2	ccd 3	ccd 6	ccd 7
level 1 events	280113	278984	310186	302624	307677	397939	grade 0 events	21722	18695	28167	24864	20164	15112
rejected events	237166	237454	260650	256614	264817	233787		7%	6%	9%	8%	6%	3%
rejected %	84%	85%	84%	84%	86%	58%	grade 1 events	214	138	327	294	169	351
								0%	0%	0%	0%	0%	0%
							grade 2 events	8217	8498	8444	7830	8175	33170
								2%	3%	2%	2%	2%	8%
							grade 3 events	3683	3731	3809	3740	3706	14908
								1%	1%	1%	1%	1%	3%
							grade 4 events	3483	3792	3680	3738	3748	14675
								1%	1%	1%	1%	1%	3%
							grade 5 events	11718	12404	11601	13165	13528	37992
								4%	4%	3%	4%	4%	9%
							grade 6 events	6228	7196	5815	6275	7442	87819
								2%	2%	1%	2%	2%	22%
							grade 7 events	224848	224530	248343	242718	250745	193912
								80%	80%	80%	80%	81%	48%

## 2.2 Compared Parameters

Parameter	Planned	Actual	Parameter	Planned	Actual
Instrument	ACIS	ACIS	Obspar format version number	7	7
Detector	ACIS-012367	ACIS-012367	Obspar file type	PREDICTED	ACTUAL
Grating	NONE	NONE	Obspar update status	NONE	UPDATED
Data mode	VFAINT	VFAINT	Number of optional ACIS chips dropped	0	0
Observation mode	POINTING	POINTING	On-chip summing requested	N	N
[deg] Pointing RA	261.155396	261.1804483667757	Subarray requested	NONE	NONE
[deg] Pointing Dec	-34.185601	-34.20353900521649	Alternating exposures requested	N	N
[deg] Pointing Roll	288.688324	288.9110955576202	[s] Primary exposure time	0.000000	3.2
[mm] SIM focus pos	-0.782348	-0.7809083437167272			
[mm] SIM defocus	0	0.001439871863259334			
[mm] SIM translation stage pos	-233.592463	-233.5874344608287			
[mm] SIM translation stage offset	0	-0.005018542100998502			
[s] Observation start time (MET)	205769250.184000	205767997.83429			
Observation start date	2004-07-09T14:06:26	2004-07-09T13:46:37			
[s] Observation end time (MET)	205807250.184000	205808048.17356			
Observation end date	2004-07-10T00:39:46	2004-07-10T00:54:08			
Read mode	TIMED	TIMED			

## 2.3 Aspect



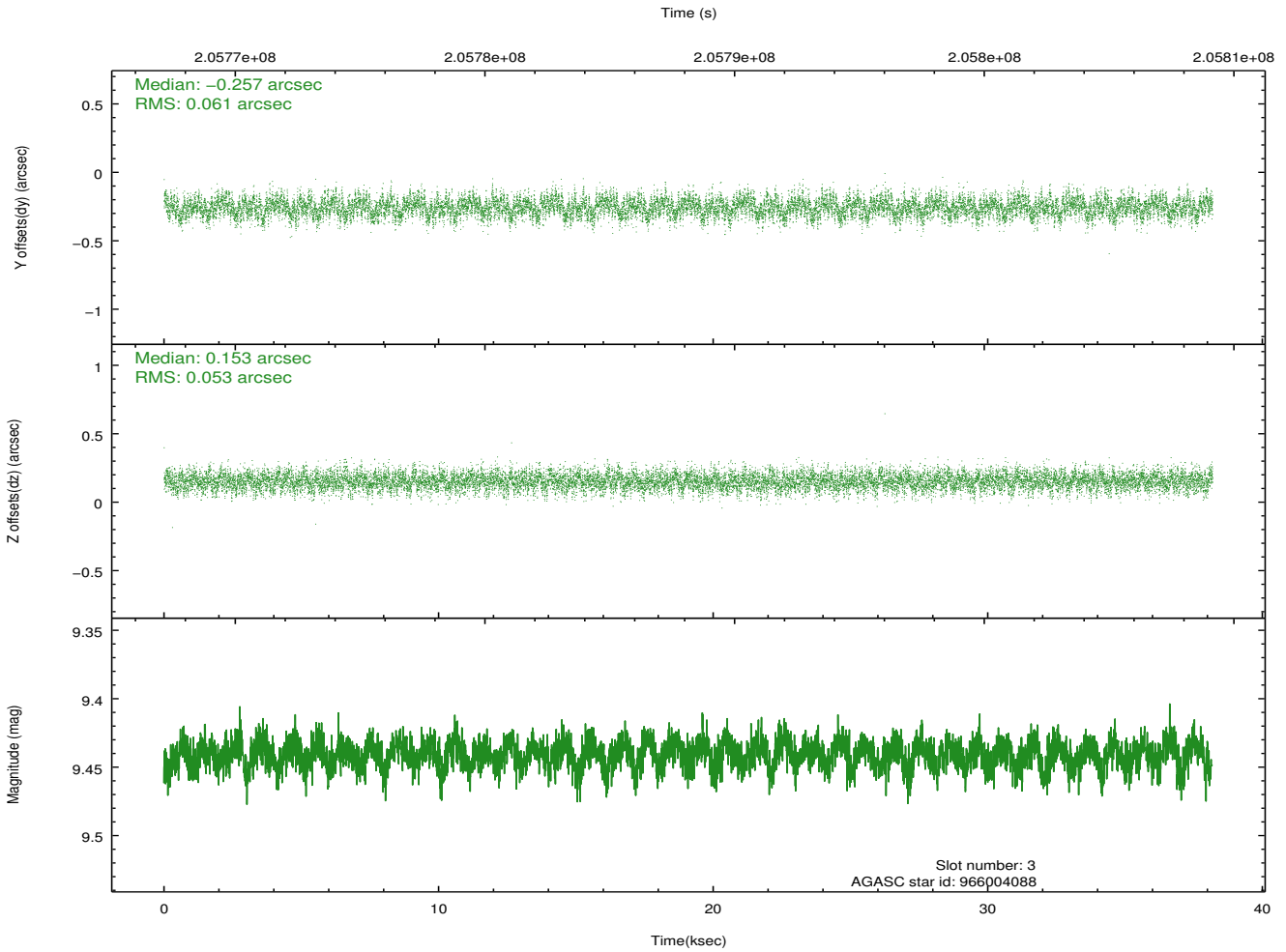
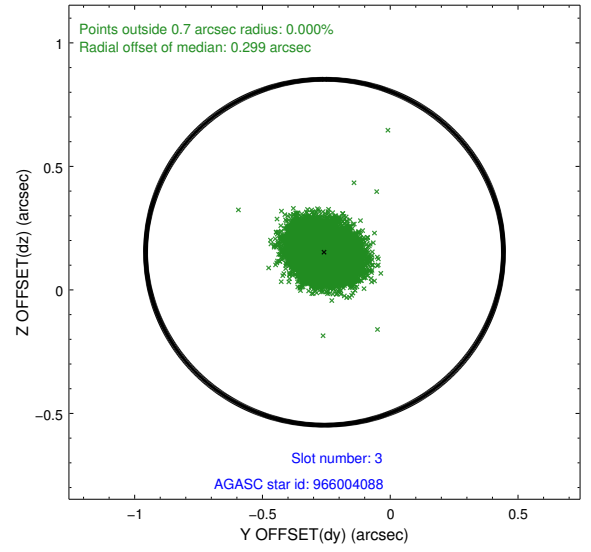
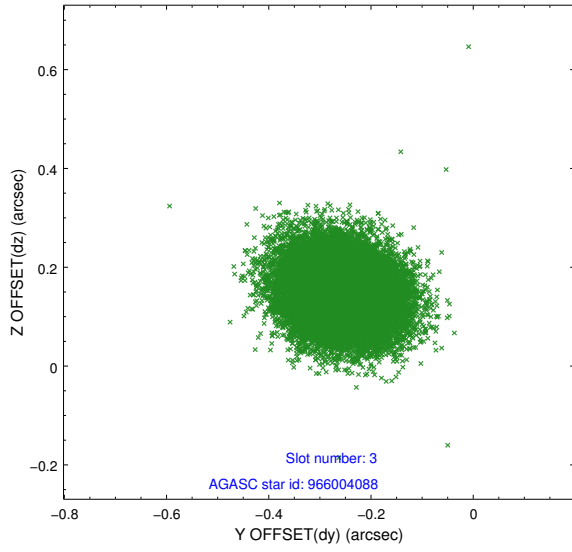


### Slot Statistics

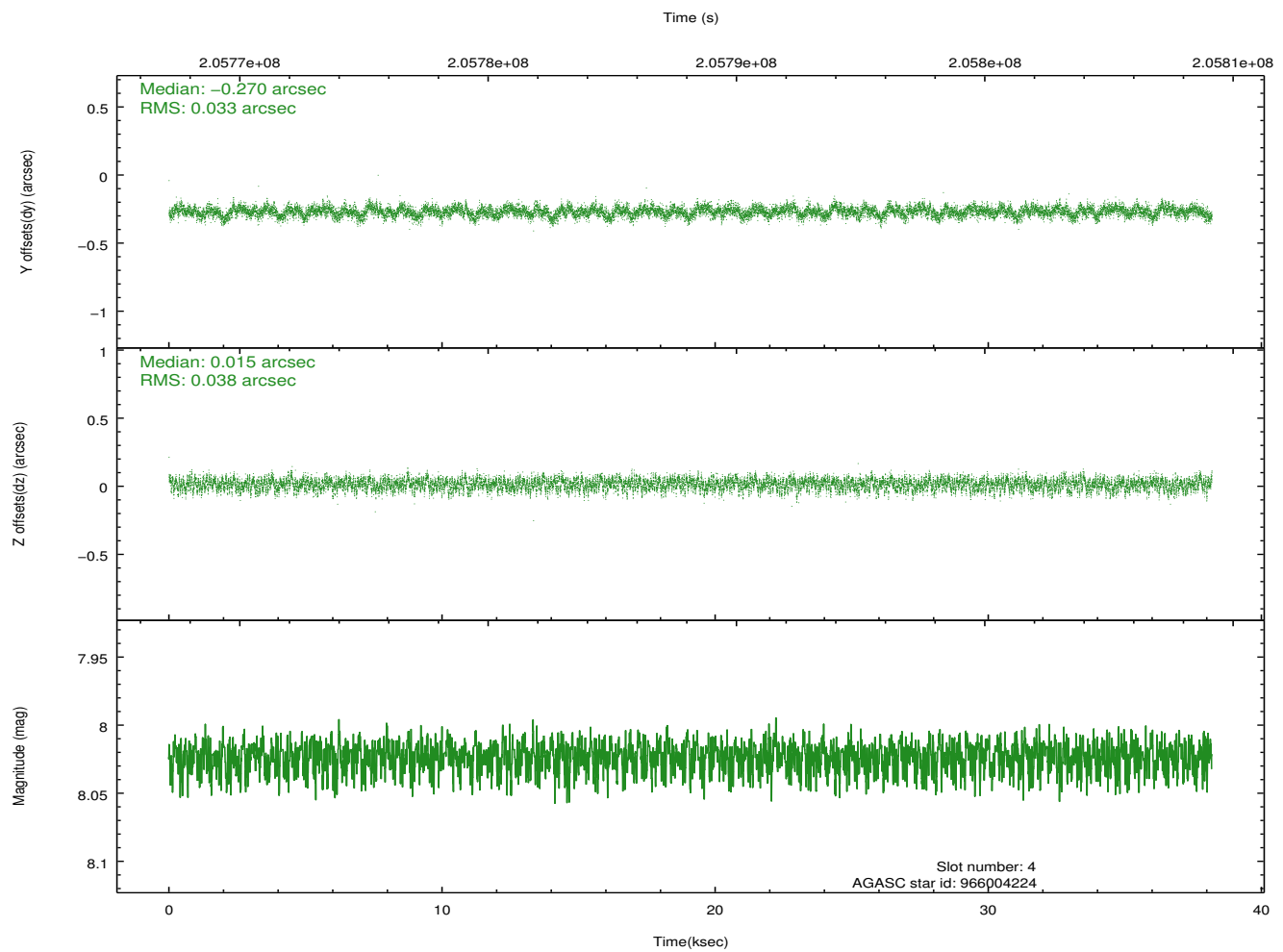
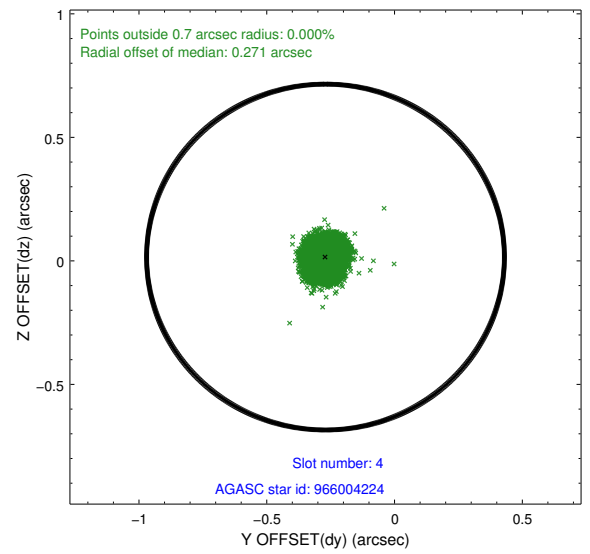
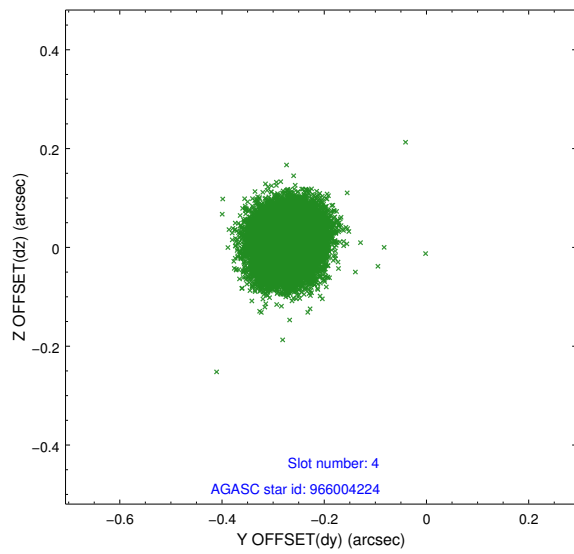
slot	status	id	mag	n_pts	med_dy	med_dz	dr1	dr2	ra	dec	mean_y	mean_z
0	FID	ACIS-I-1	7.24	9309	0.007	0.043	0.007	0.012	0.000000	0.000000	934.39	-832.09
1	FID	ACIS-I-5	7.22	9305	-0.152	0.037	0.007	0.012	0.000000	0.000000	-1813.88	1065.36
2	FID	ACIS-I-6	7.26	9307	0.053	-0.009	0.007	0.012	0.000000	0.000000	399.93	1709.87
3	GUIDE	966004088	9.44	18599	-0.257	0.153	0.087	0.137	260.740677	-33.763530	-1834.40	-689.78
4	GUIDE	966004224	8.02	18613	-0.270	0.015	0.054	0.086	260.824329	-33.819793	-1563.20	-516.64
5	GUIDE	967704600	8.51	18613	-0.024	0.087	0.059	0.094	262.063091	-34.610970	2323.91	2053.40
6	GUIDE	967708760	7.42	18621	-0.088	-0.105	0.058	0.089	261.328301	-34.249213	382.64	413.95
7	GUIDE	967711376	7.07	18620	0.640	-0.148	0.056	0.088	261.036431	-34.798453	1978.56	-1040.15

## 2.4 Star Slots

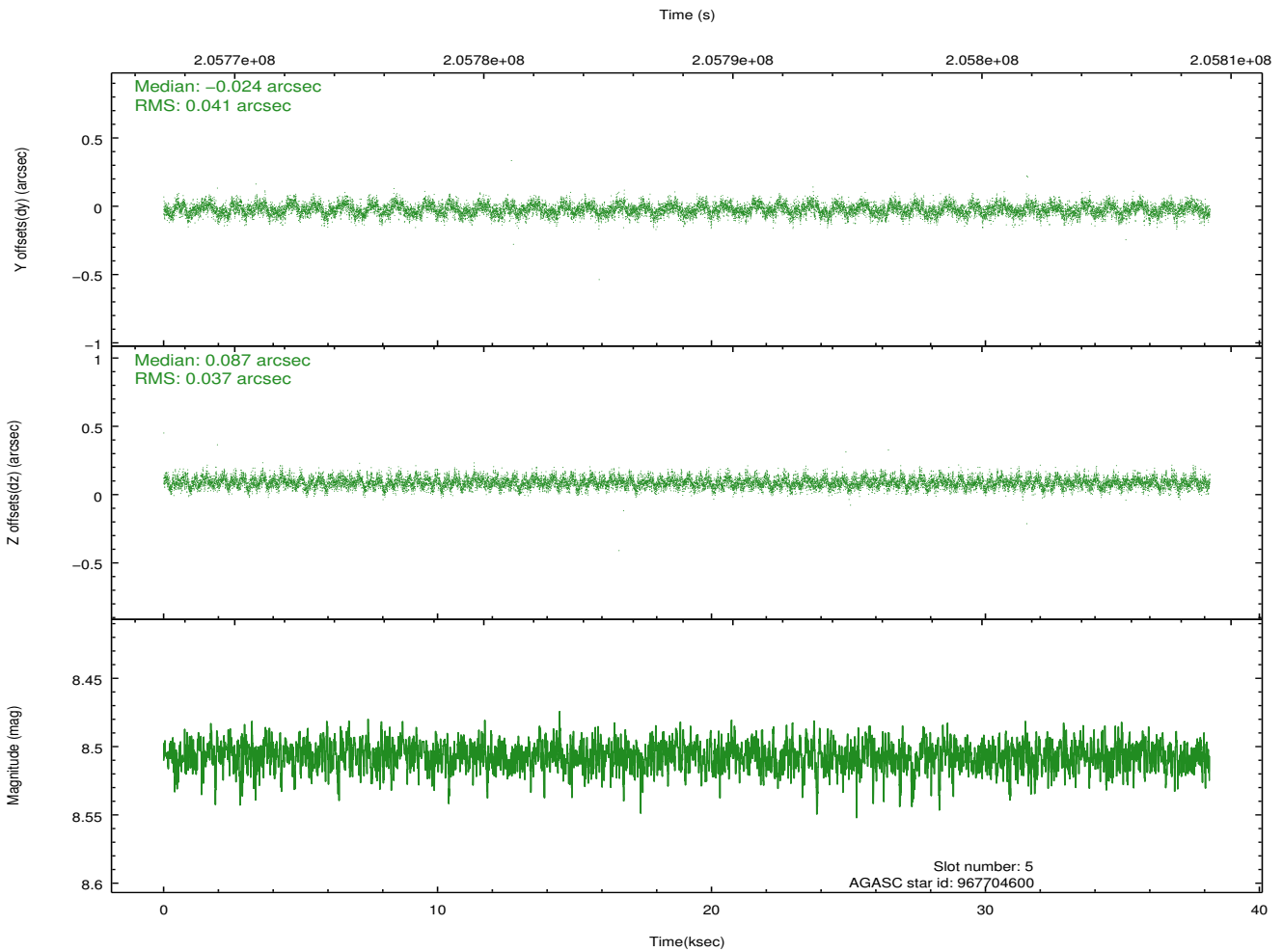
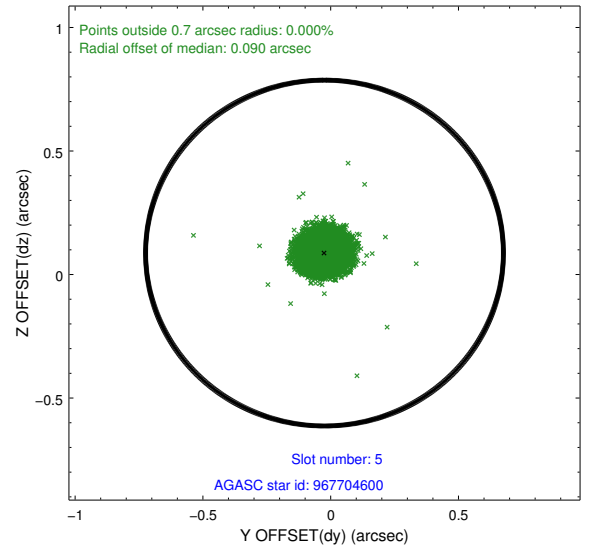
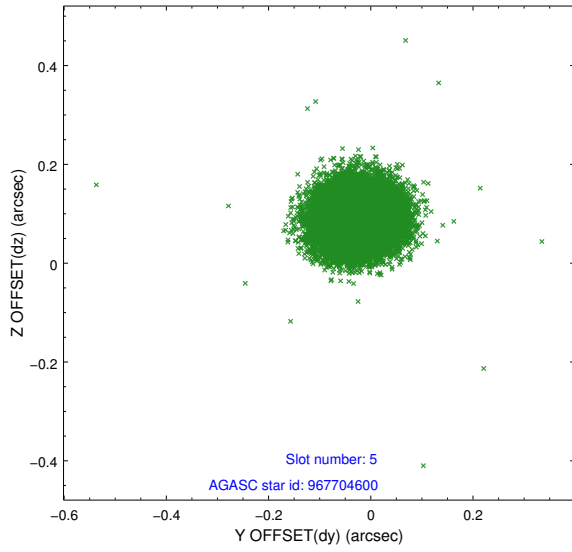
### 2.4.1 Slot 3



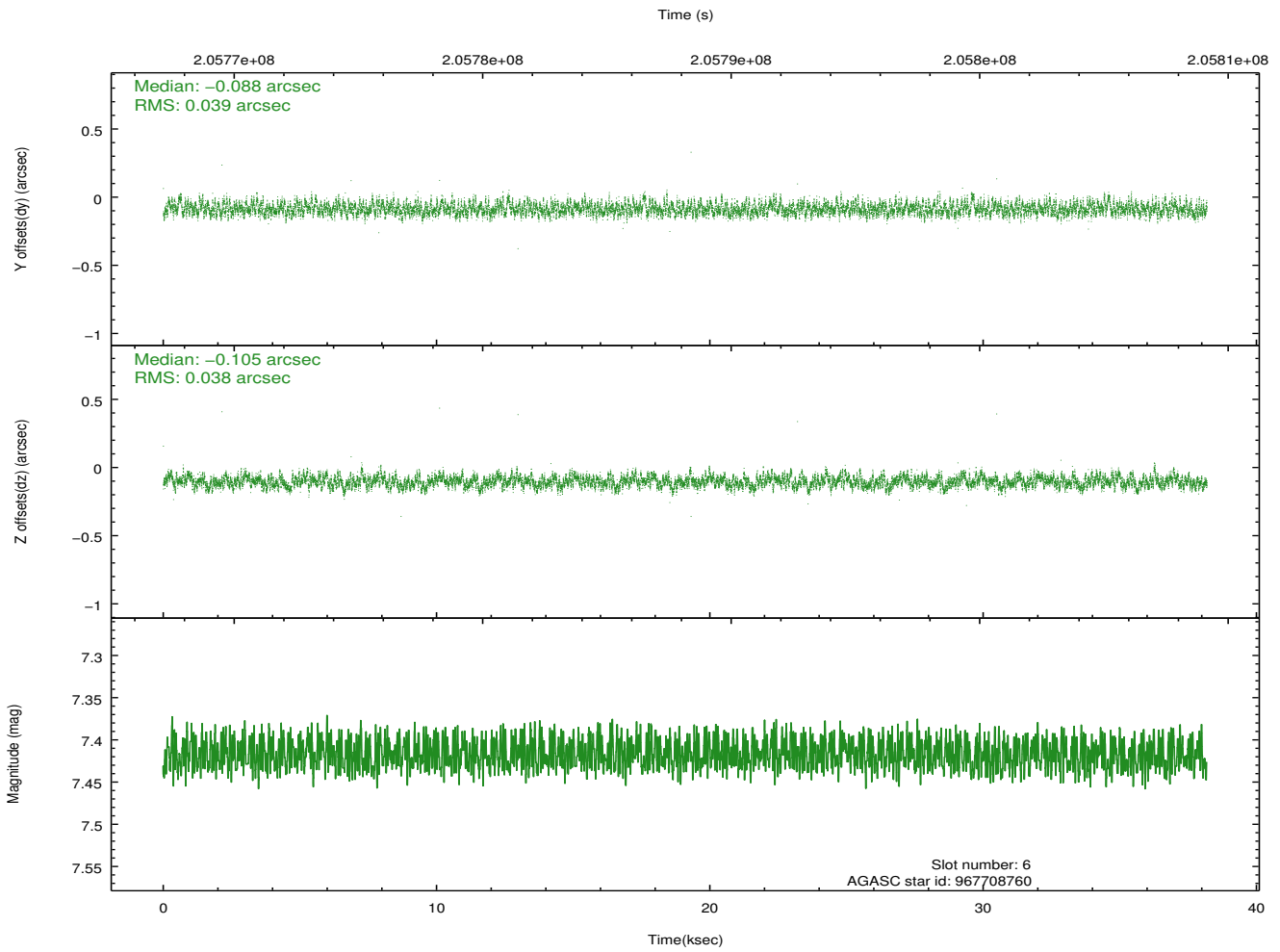
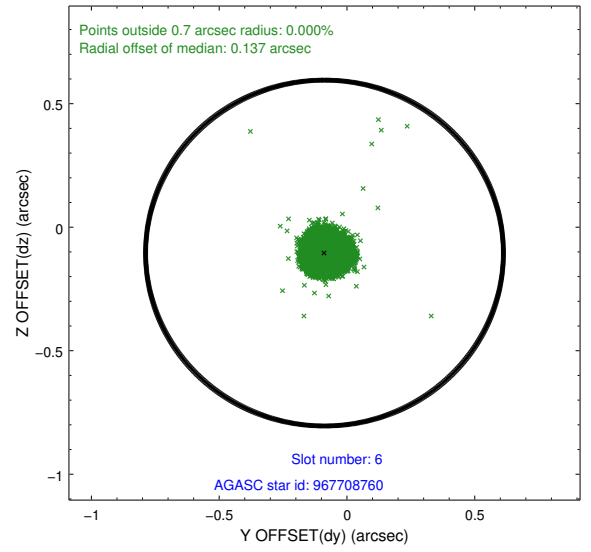
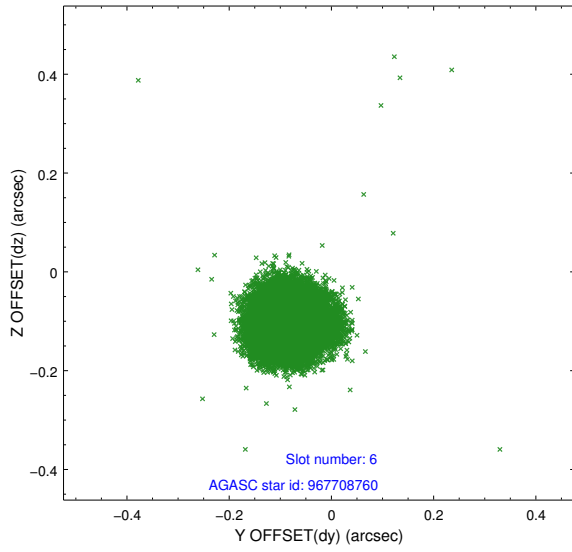
## 2.4.2 Slot 4



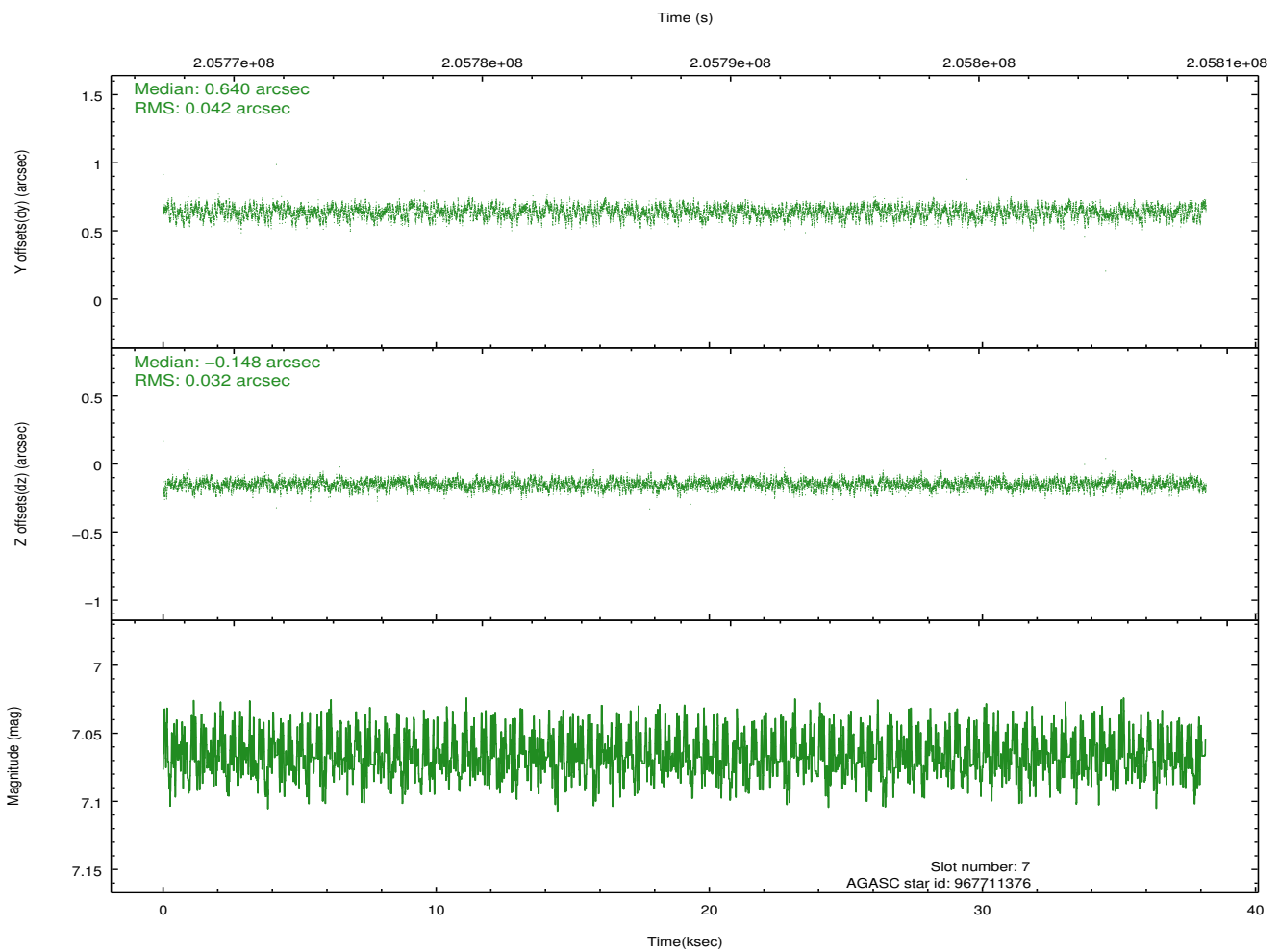
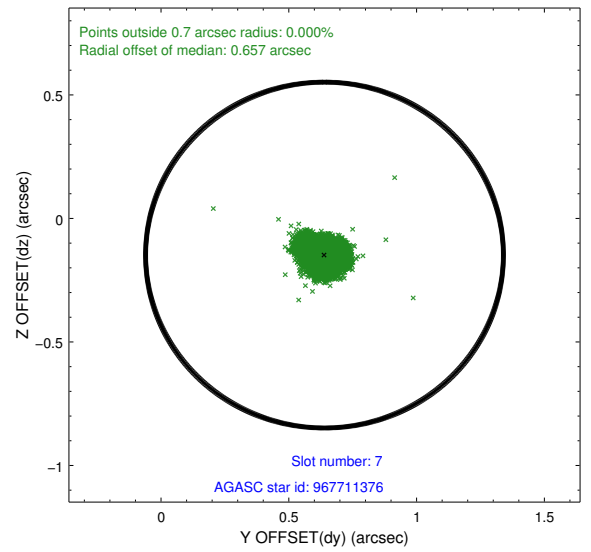
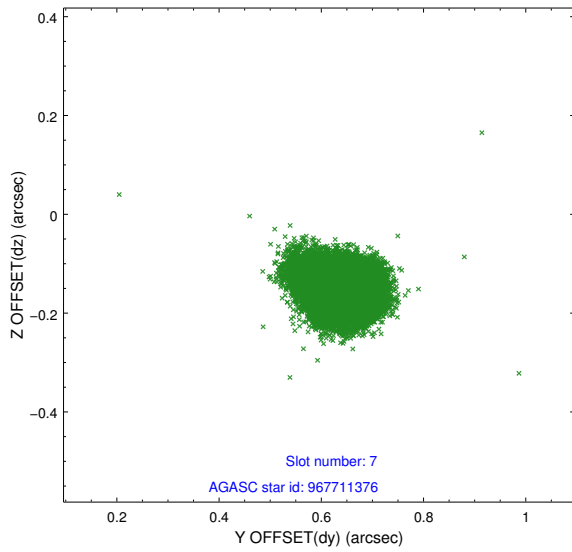
### 2.4.3 Slot 5



## 2.4.4 Slot 6

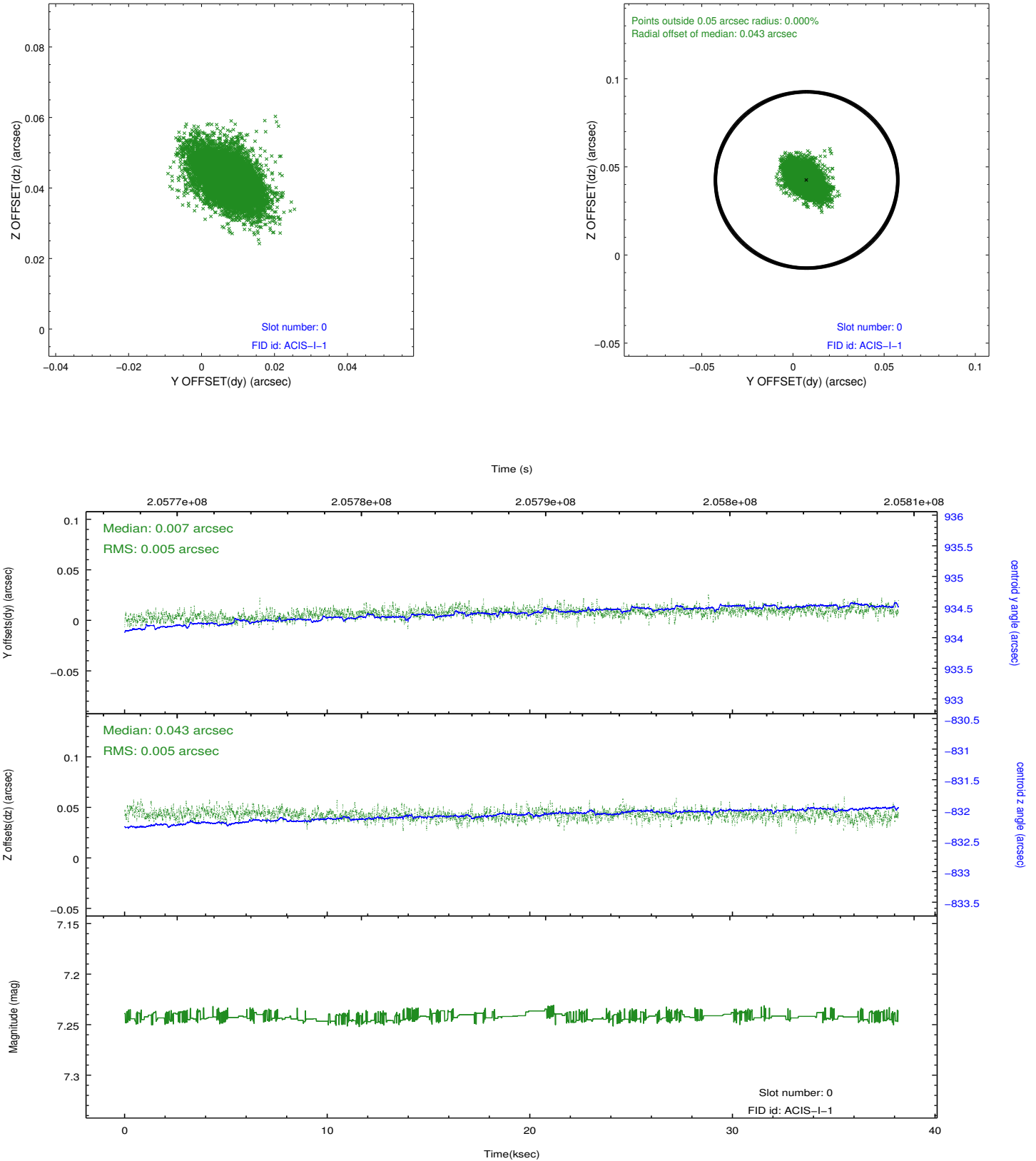


## 2.4.5 Slot 7

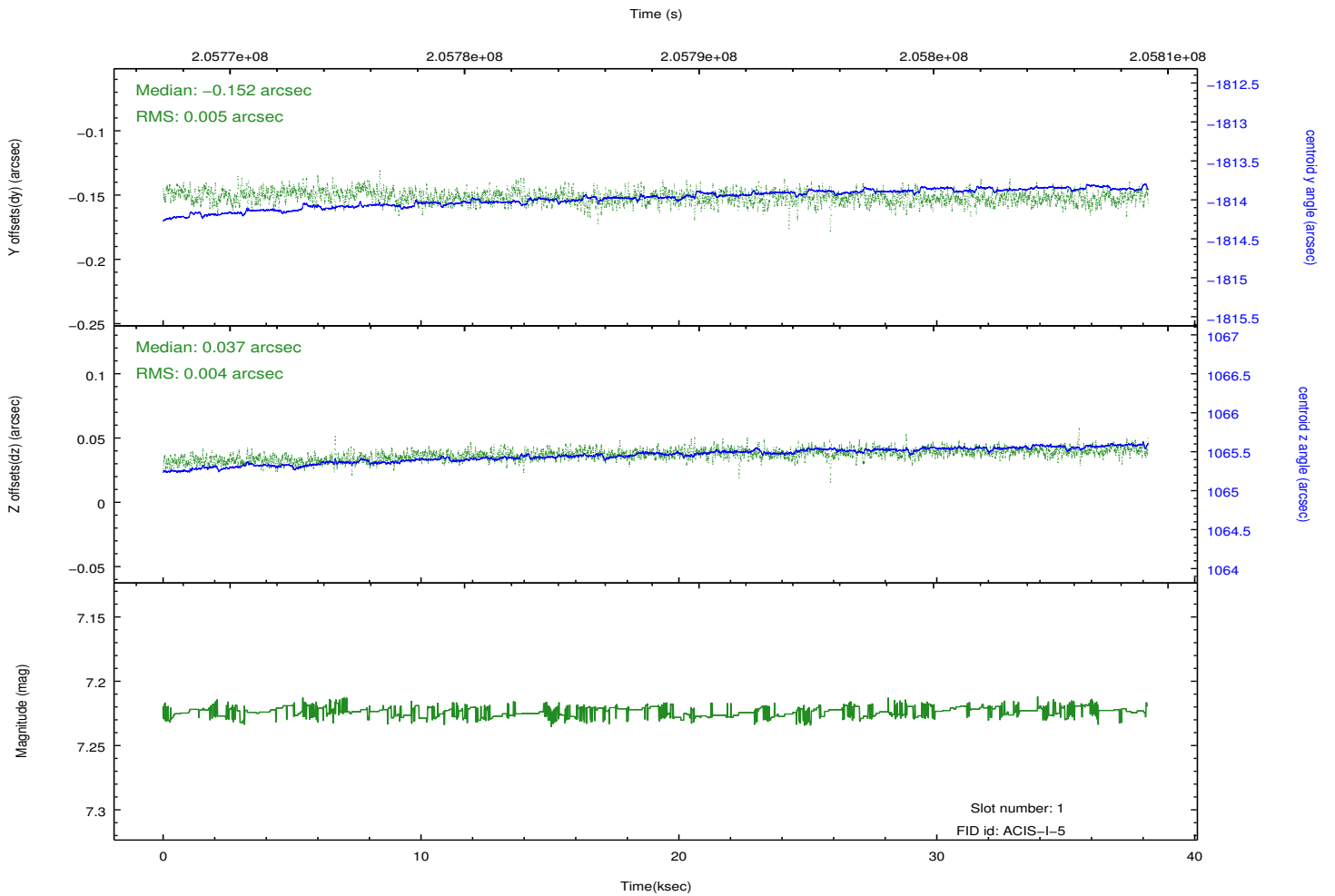
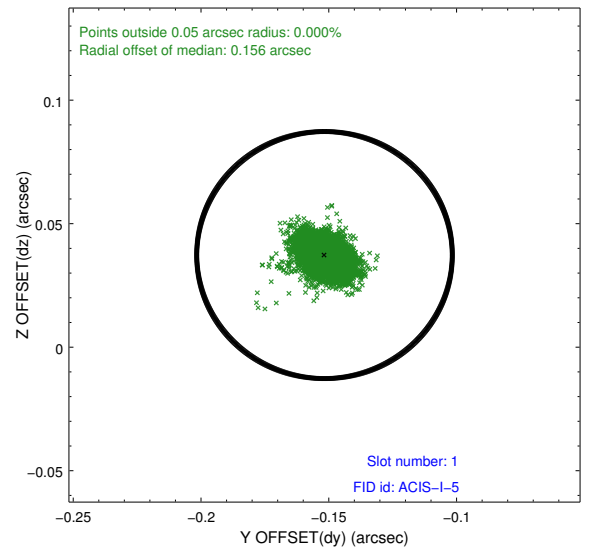
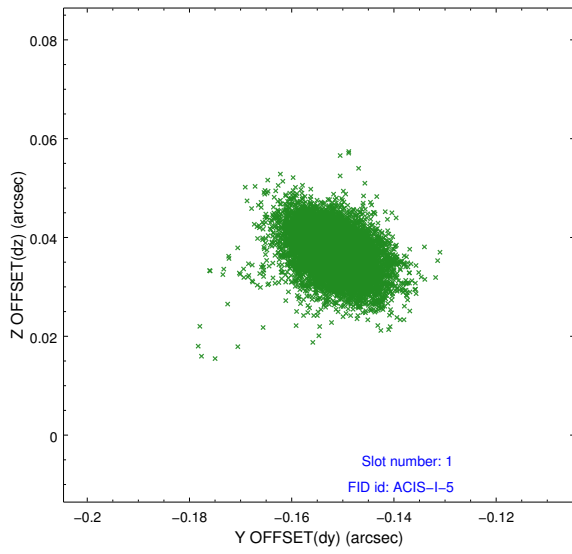


## 2.5 FID Slots

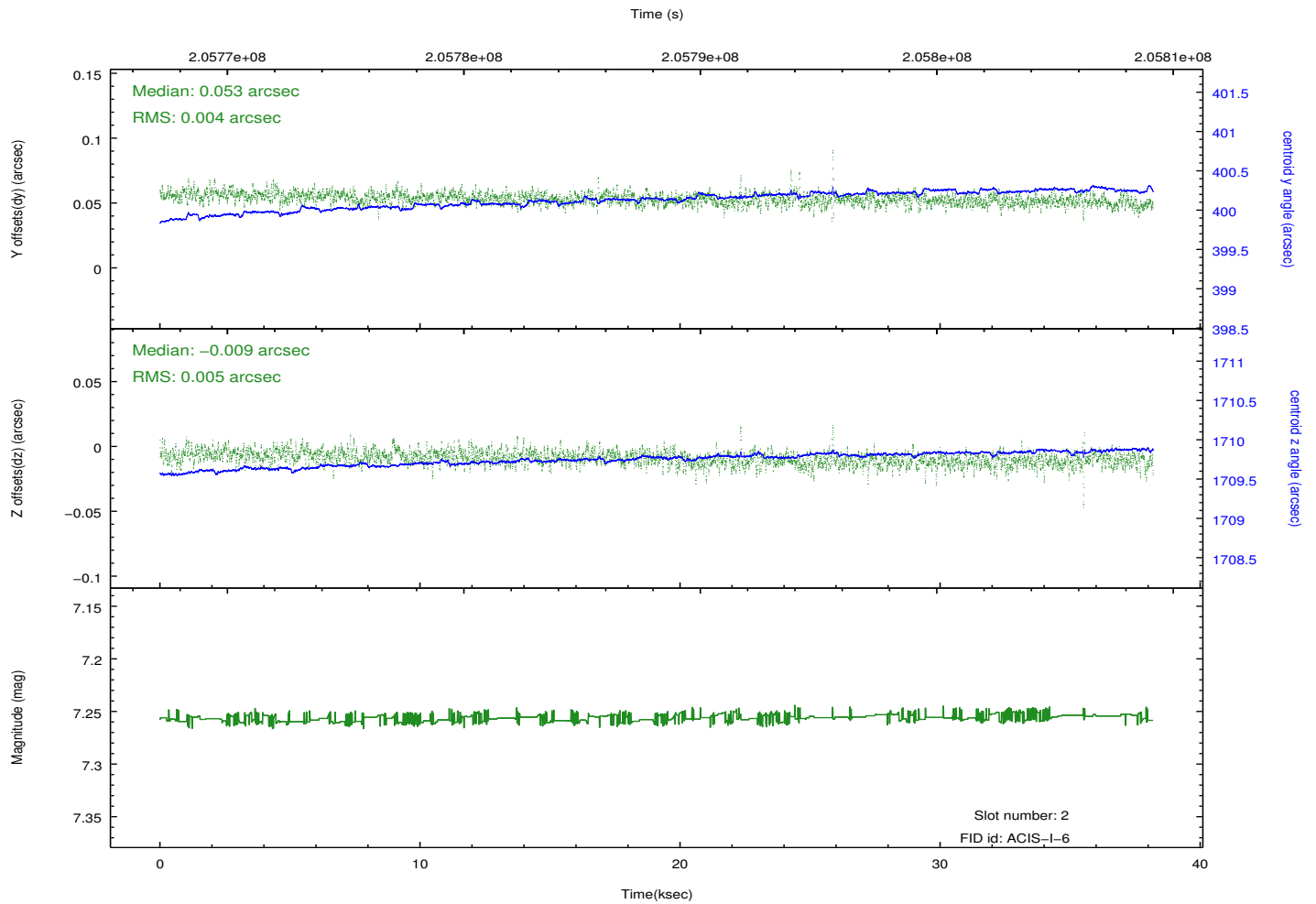
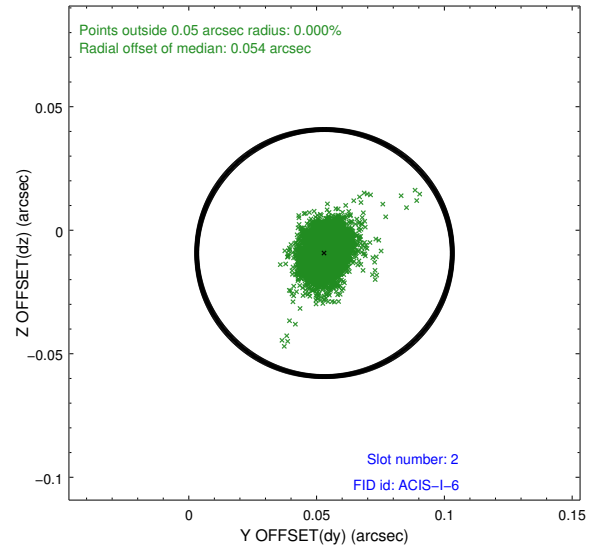
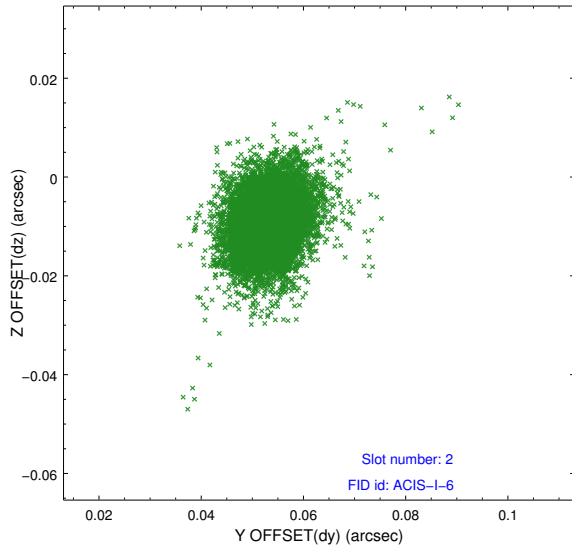
### 2.5.1 Slot 0



## 2.5.2 Slot 1



### 2.5.3 Slot 2



# A Summary

## A.1 Status

V&V Scientist	Jen Lauer
V&V Date (YYYY-MM-DD)	2012.12.20
V&V Edition	1
V&V Disposition and Status	OK
V&V Charge Time	38.172

## A.2 Comments