

# V&V Reference Report

## L2 ASCDS Version : 8.4.5

Observation 4487 - L2 Version 3  
Chandra X-Ray Center

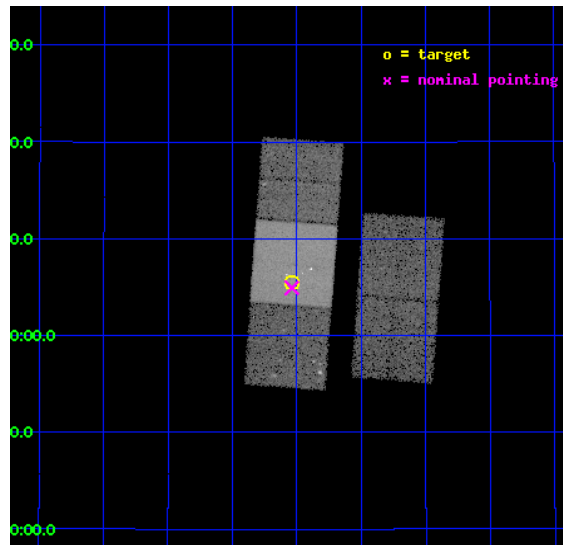
L2 Processing Date : Nov 10 2012

## Contents

<b>1</b>	<b>Front</b>	<b>2</b>
<b>2</b>	<b>OBI</b>	<b>3</b>
2.1	OBI . . . . .	3
2.1.1	Images . . . . .	3
2.1.2	Bias . . . . .	3
2.1.3	Parameters . . . . .	4
2.1.4	Events . . . . .	4
2.2	Compared Parameters . . . . .	5
2.3	Aspect . . . . .	6
2.4	Star Slots . . . . .	9
2.4.1	Slot 3 . . . . .	9
2.4.2	Slot 4 . . . . .	10
2.4.3	Slot 5 . . . . .	11
2.4.4	Slot 6 . . . . .	12
2.4.5	Slot 7 . . . . .	13
2.5	FID Slots . . . . .	14
2.5.1	Slot 0 . . . . .	14
2.5.2	Slot 1 . . . . .	15
2.5.3	Slot 2 . . . . .	16
<b>A</b>	<b>Summary</b>	<b>17</b>
A.1	Status . . . . .	17
A.2	Comments . . . . .	17

# 1 Front

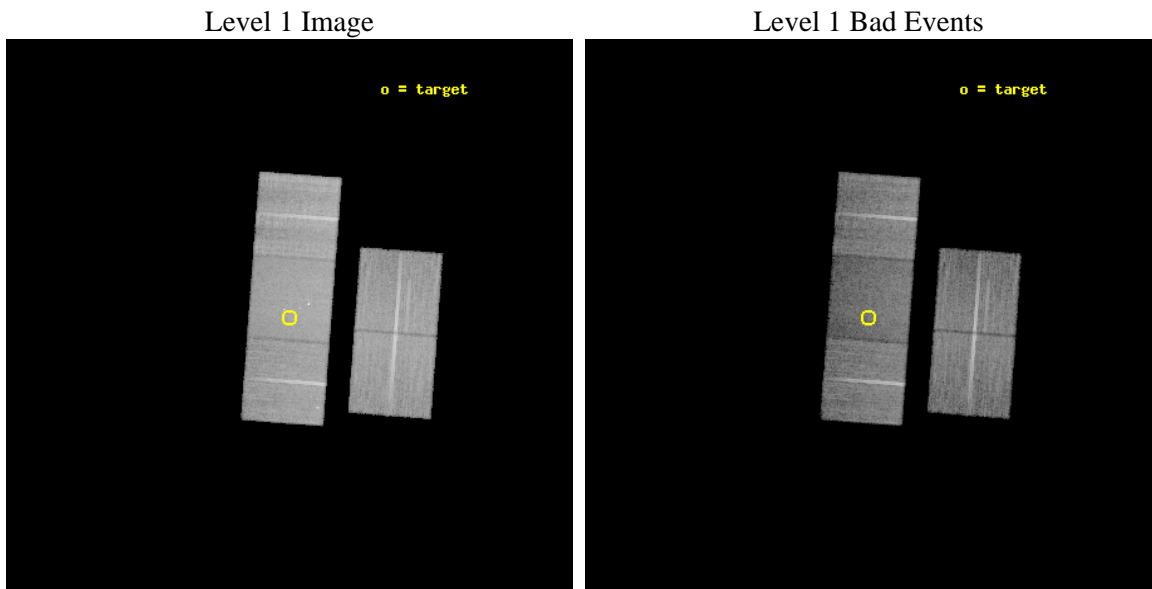
seq_num	200256	Sequence number
obs_id	4487	Observation id
title	SHOCKS AND X-RAYS IN PROTOSTELLAR JETS	Proposal title
observer	Prof. Manuel Guedel	Principal investigator
object	DG Tau AB	Source name
dtcycle	0	&#160
cycle	P	events from which exps? Prim/Second/Both
ra_targ	66.760833	Observer's specified target RA [deg]
dec_targ	26.091917	Observer's specified target Dec [deg]
ra_nom	66.759754751901	Nominal RA [deg]
dec_nom	26.082274943312	Nominal Dec [deg]
roll_nom	274.30530067021	Nominal Roll [deg]
revision	3	Processing version of data
ontime	30109.132451862	Sum of GTIs [s]
livetime	29715.734470358	Livetime [s]
ontime2	30105.827281684	Sum of GTIs [s]
ontime3	30109.050371855	Sum of GTIs [s]
ontime6	30105.950431615	Sum of GTIs [s]
ontime7	30109.132451862	Sum of GTIs [s]
ontime8	30109.009331852	Sum of GTIs [s]
l2events	125981	Number of level 2 events



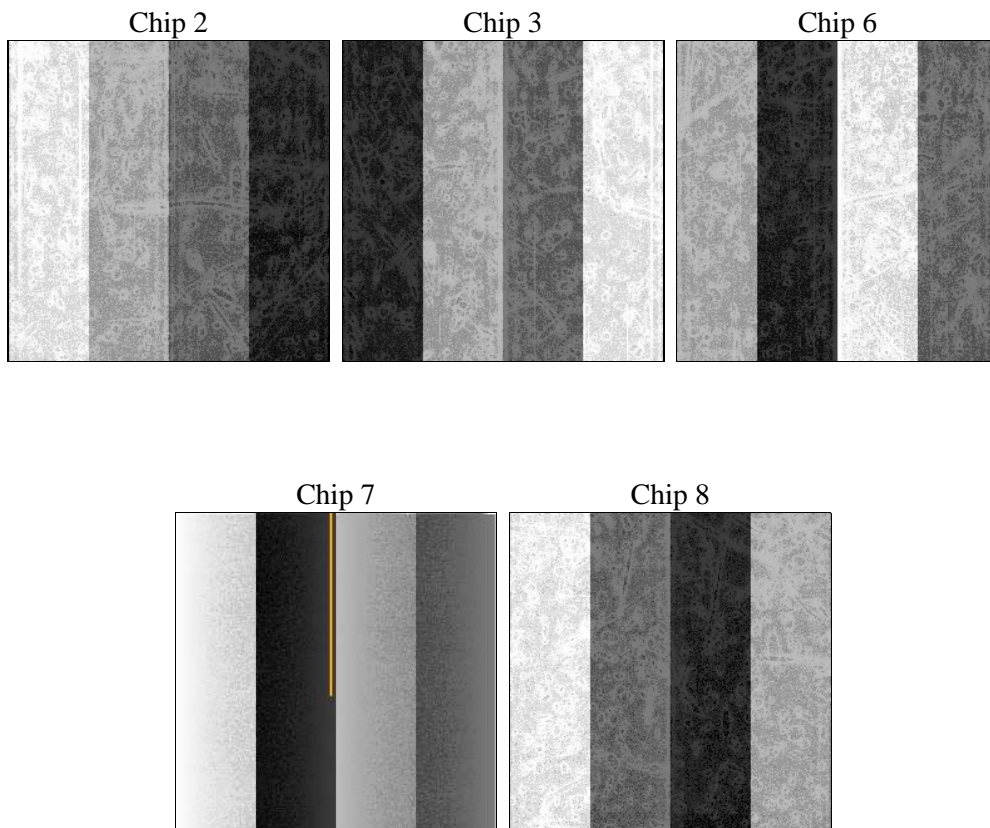
## 2 OBI

### 2.1 OBI

#### 2.1.1 Images



#### 2.1.2 Bias



### 2.1.3 Parameters

obi_num	1	Obi number	sched_exp_time	30000.000000	[s] Scheduled observation exposure time
ascdsver	8.4.5	Processing system revision	ontime	30109.132451862	Sum of GTIs [s]
caldbver	4.5.2	&#160	ontime2	30105.827281684	Sum of GTIs [s]
date	2012-11-10T06:32:37	Date and time of file creation	ontime3	30109.050371855	Sum of GTIs [s]
revision	3	Processing version of data	ontime6	30105.950431615	Sum of GTIs [s]
			ontime7	30109.132451862	Sum of GTIs [s]
			ontime8	30109.009331852	Sum of GTIs [s]
			l1events	784782	Number of level 1 events

### 2.1.4 Events

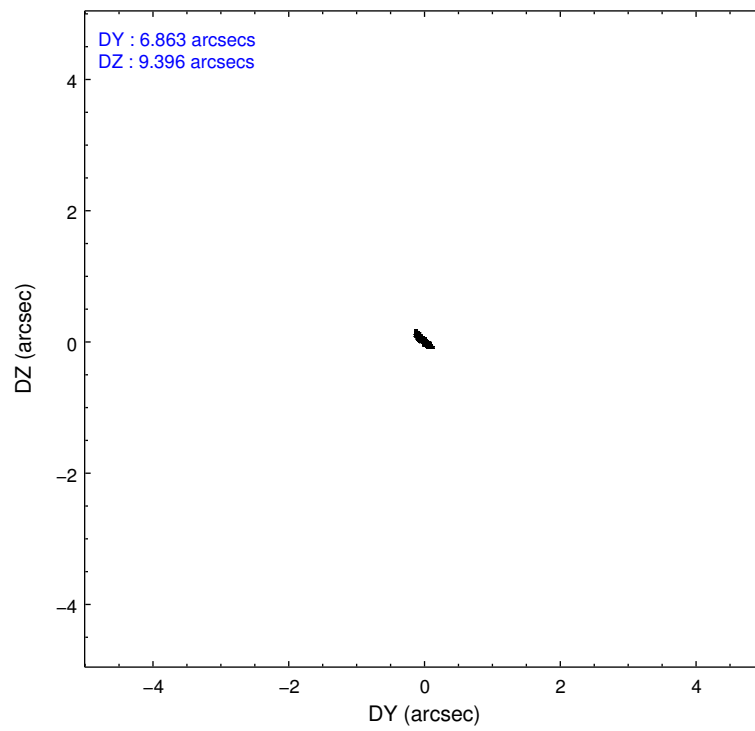
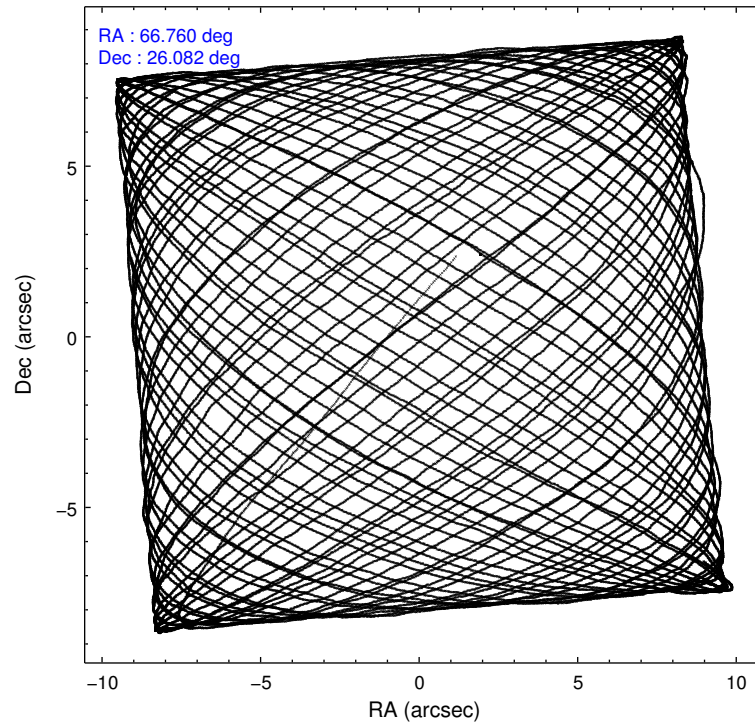
	ccd 2	ccd 3	ccd 6	ccd 7	ccd 8
level 1 events	146241	142034	147845	163712	184950
rejected events	132280	128504	131566	89107	139743
rejected %	90%	90%	88%	54%	75%

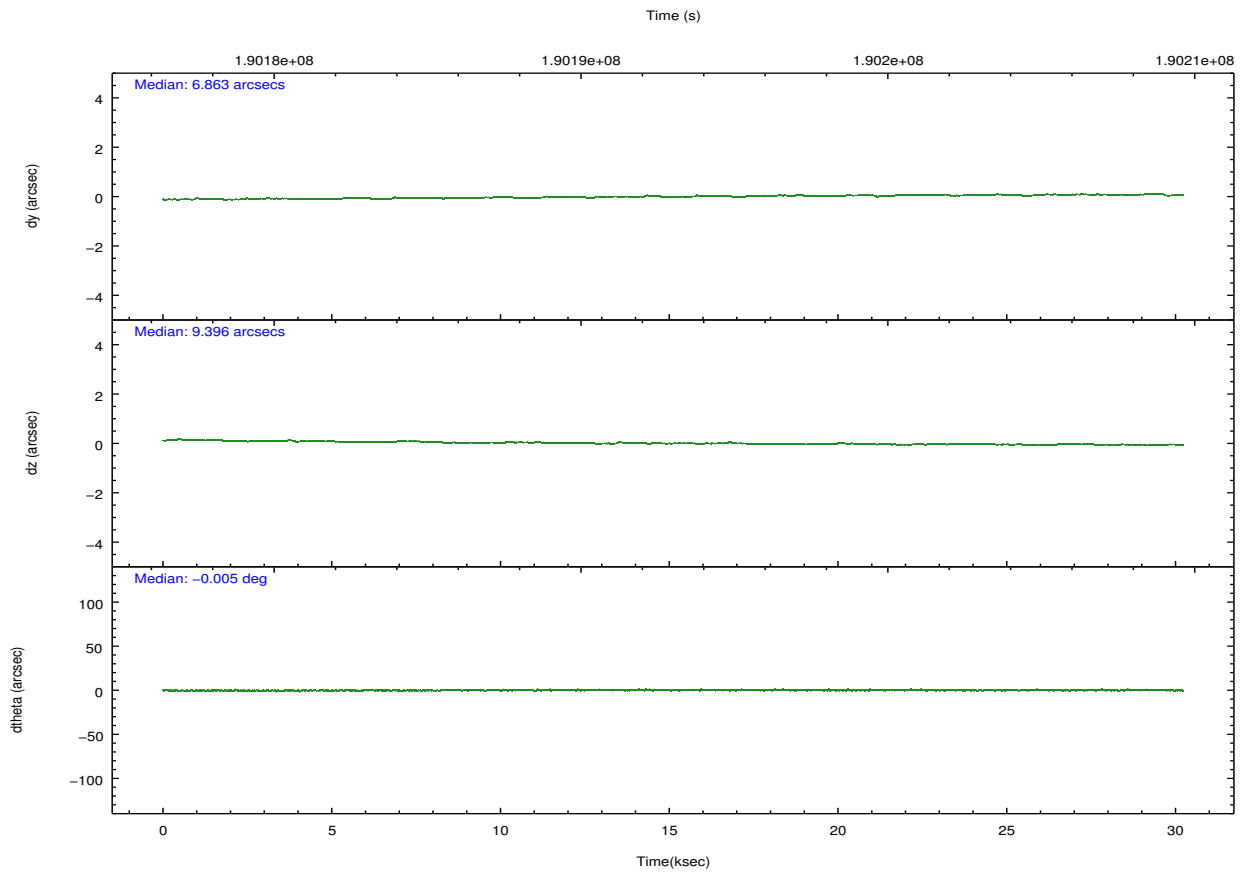
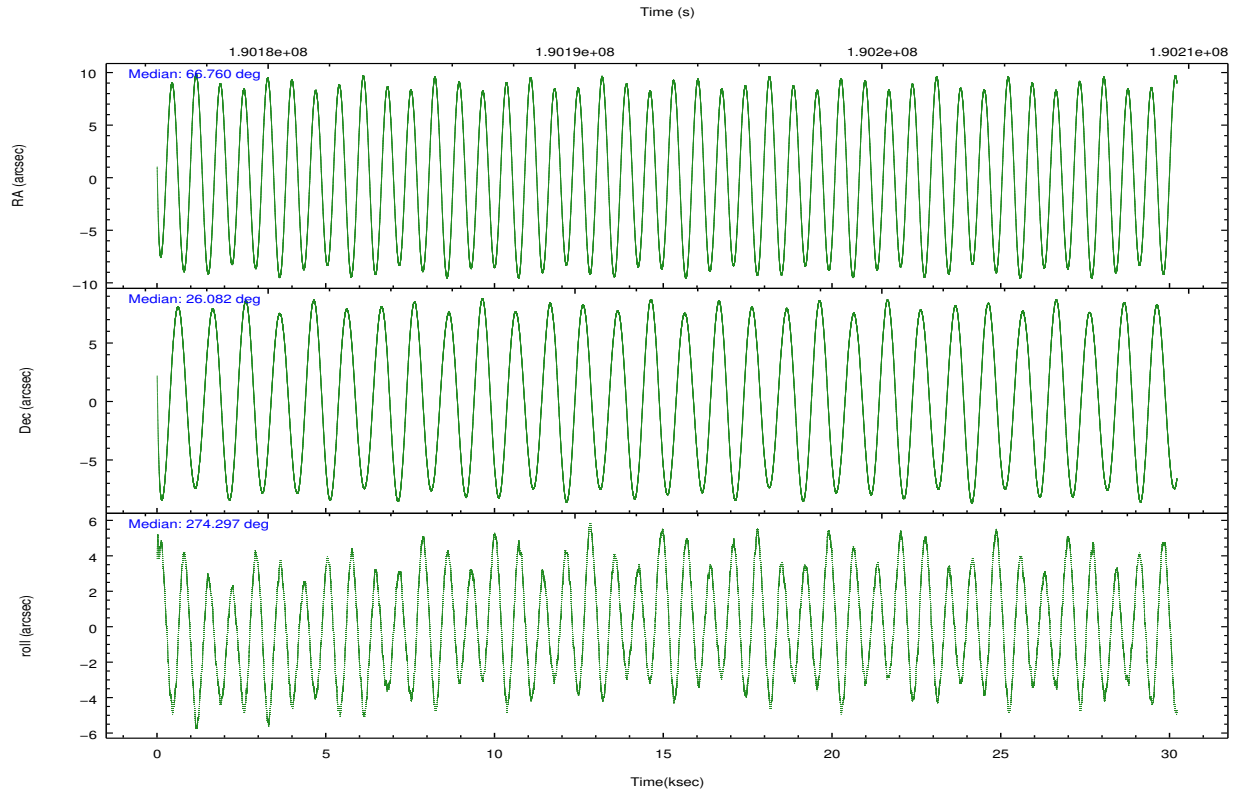
	ccd 2	ccd 3	ccd 6	ccd 7	ccd 8
grade 0 events	5037	4778	6147	6891	14578
	3%	3%	4%	4%	7%
grade 1 events	62	66	64	135	135
	0%	0%	0%	0%	0%
grade 2 events	3219	2857	3443	15072	9237
	2%	2%	2%	9%	4%
grade 3 events	1517	1601	1730	7133	5452
	1%	1%	1%	4%	2%
grade 4 events	1637	1565	1685	7076	5036
	1%	1%	1%	4%	2%
grade 5 events	4753	5771	5992	16981	8177
	3%	4%	4%	10%	4%
grade 6 events	2552	2729	3274	38440	10905
	1%	1%	2%	23%	5%
grade 7 events	127464	122667	125510	71984	131430
	87%	86%	84%	43%	71%

## 2.2 Compared Parameters

Parameter	Planned	Actual	Parameter	Planned	Actual
Instrument	ACIS	ACIS	Obspar format version number	7	7
Detector	ACIS-23678	ACIS-23678	Obspar file type	PREDICTED	ACTUAL
Grating	NONE	NONE	Obspar update status	NONE	UPDATED
Data mode	VFAINT	VFAINT	Number of optional ACIS chips dropped	0	0
Observation mode	POINTING	POINTING	On-chip summing requested	N	N
[deg] Pointing RA	66.742319	66.75975475190121	Subarray requested	NONE	NONE
[deg] Pointing Dec	26.104581	26.08227494331181	Alternating exposures requested	N	N
[deg] Pointing Roll	274.156330	274.3053006702145	[s] Primary exposure time	0.000000	3.1
[mm] SIM focus pos	-0.684267	-0.6828225247311905			
[mm] SIM defocus	0	0.001444936568705701			
[mm] SIM translation stage pos	-190.132523	-190.1400660498719			
[mm] SIM translation stage offset	0	0.00754346686406393			
[s] Observation start time (MET)	190178109.184000	190177131.63602			
Observation start date	2004-01-11T03:14:05	2004-01-11T02:58:51			
[s] Observation end time (MET)	190208109.184000	190209141.87492			
Observation end date	2004-01-11T11:34:05	2004-01-11T11:52:21			
Read mode	TIMED	TIMED			

## 2.3 Aspect



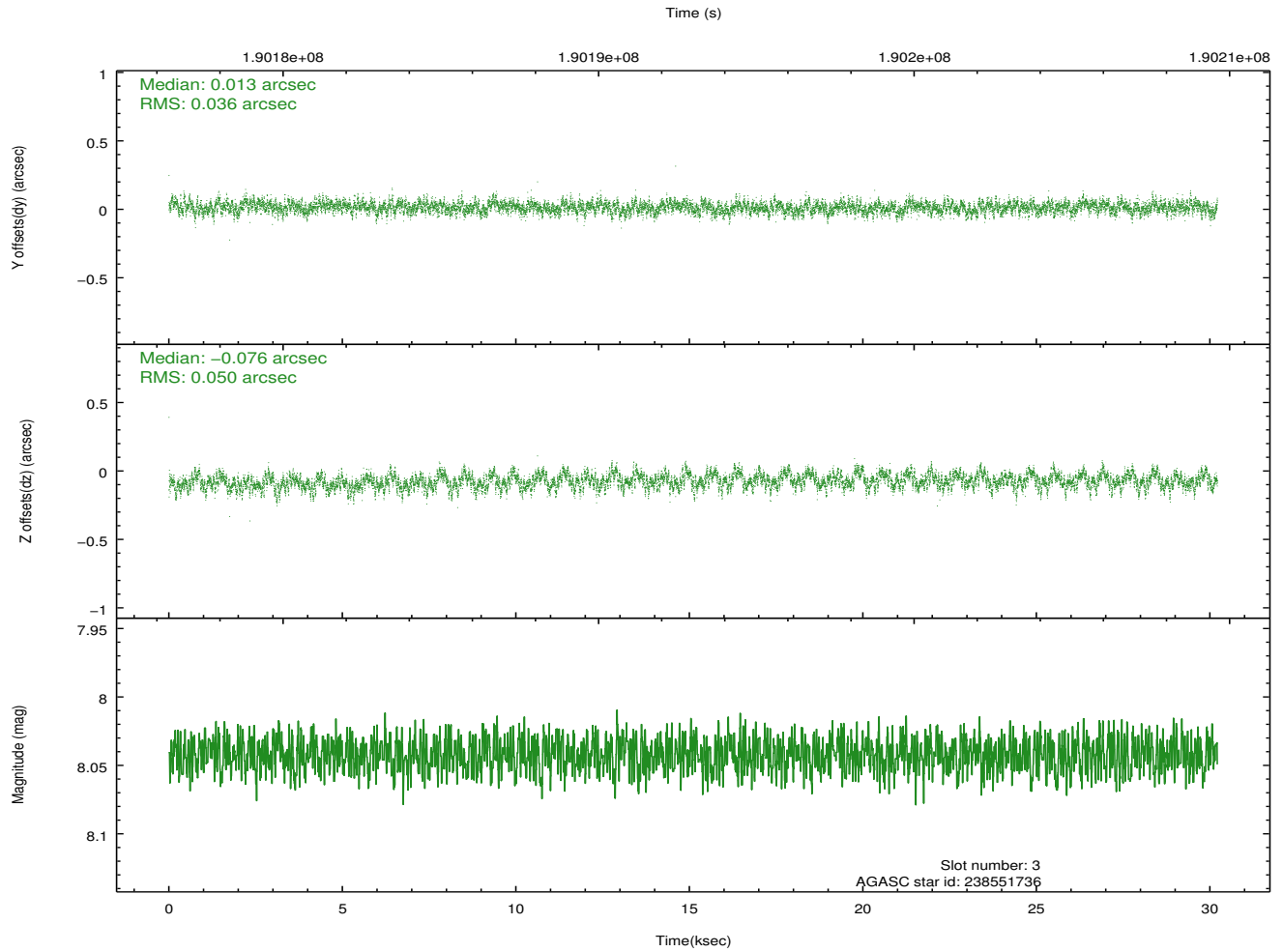
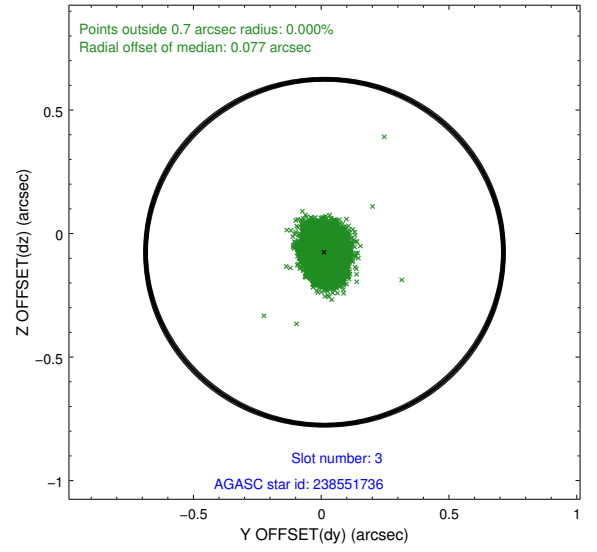
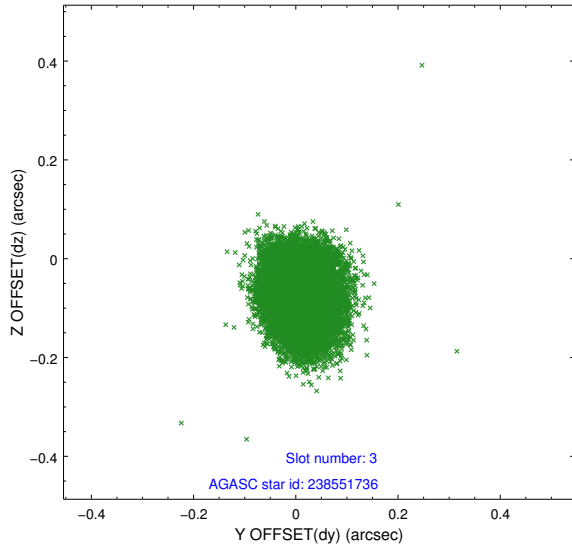


### Slot Statistics

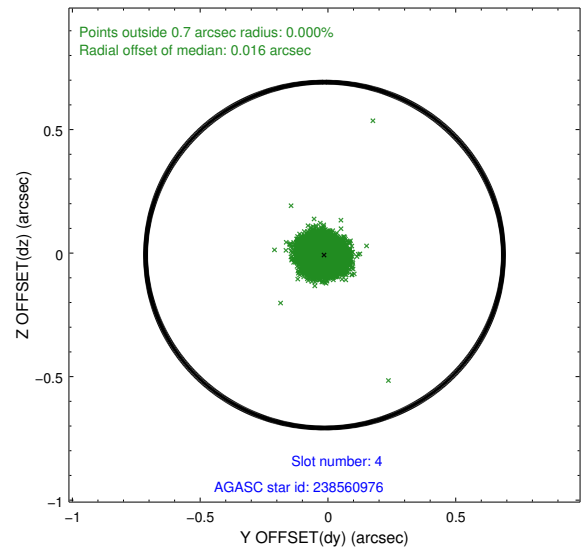
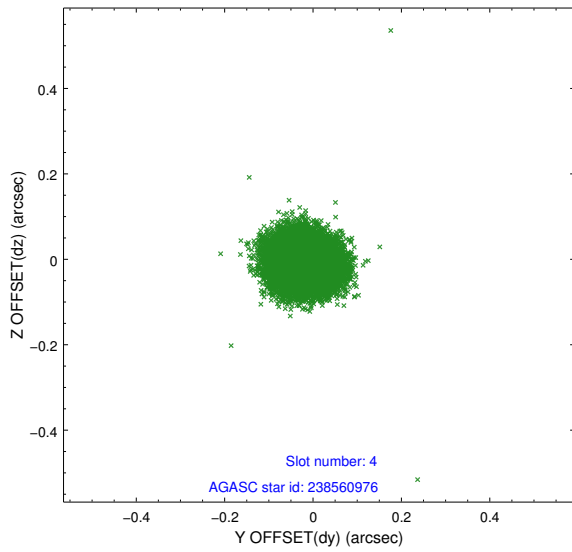
slot	status	id	mag	n_pts	med_dy	med_dz	dr1	dr2	ra	dec	mean_y	mean_z
0	FID	ACIS-S-2	7.10	7370	-0.038	-0.025	0.010	0.021	0.000000	0.000000	-759.62	-1730.67
1	FID	ACIS-S-4	7.20	7370	0.062	0.025	0.012	0.034	0.000000	0.000000	2153.71	177.82
2	FID	ACIS-S-5	7.23	7370	-0.058	0.009	0.009	0.019	0.000000	0.000000	-1812.42	171.51
3	GUIDE	238551736	8.04	14738	0.013	-0.076	0.065	0.107	66.295103	25.749175	1169.09	-1538.44
4	GUIDE	238560976	7.88	14738	-0.014	-0.008	0.054	0.089	66.476513	25.572013	1849.22	-999.50
5	GUIDE	240255592	9.94	14729	-0.048	-0.012	0.138	0.221	67.373587	26.152056	-27.55	2047.33
6	GUIDE	240257560	8.71	14739	0.087	0.049	0.058	0.096	66.998185	25.718771	1444.83	727.67
7	GUIDE	240781424	9.20	14734	-0.033	0.046	0.097	0.152	67.378197	26.671551	-1892.36	2188.87

## 2.4 Star Slots

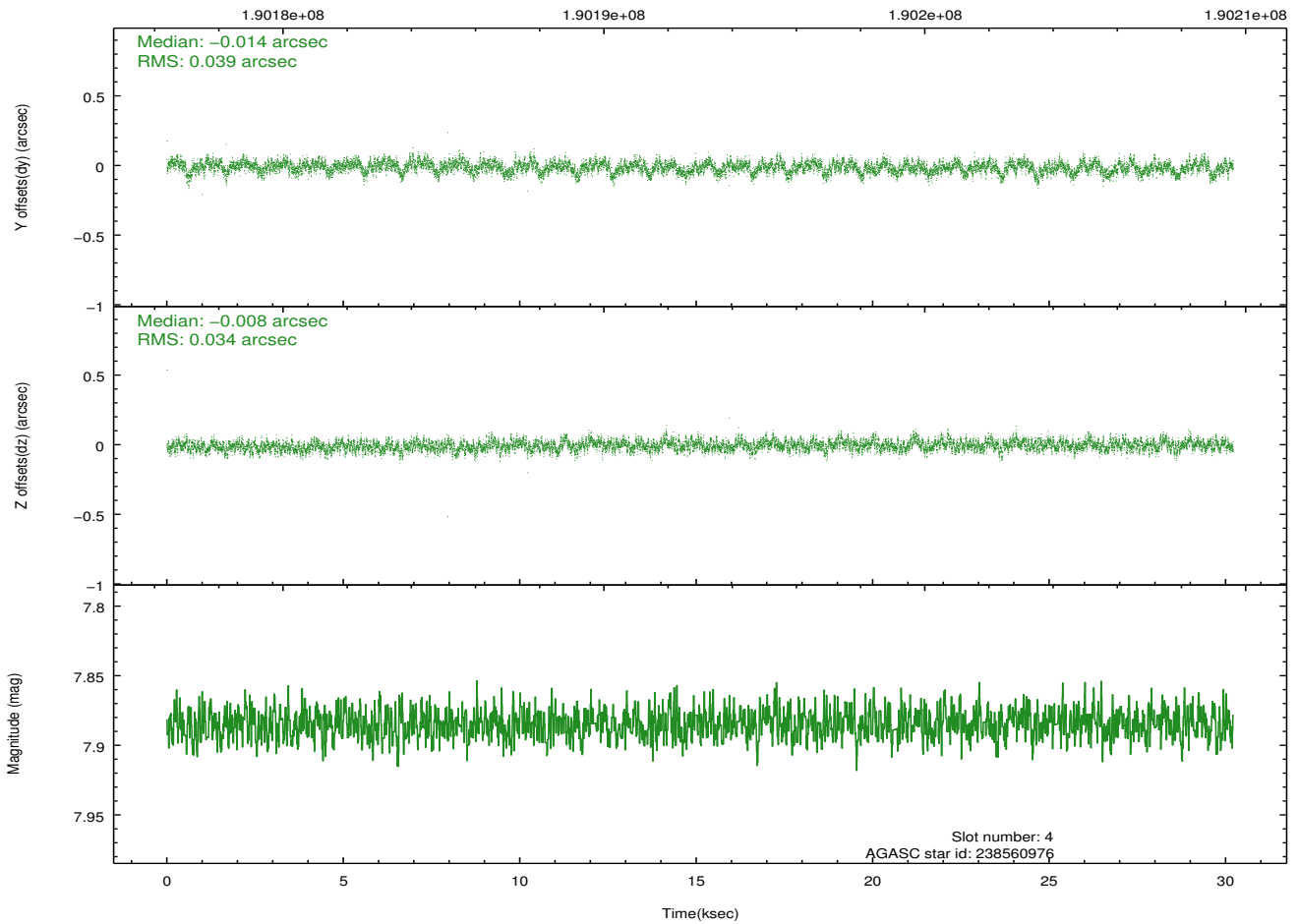
### 2.4.1 Slot 3



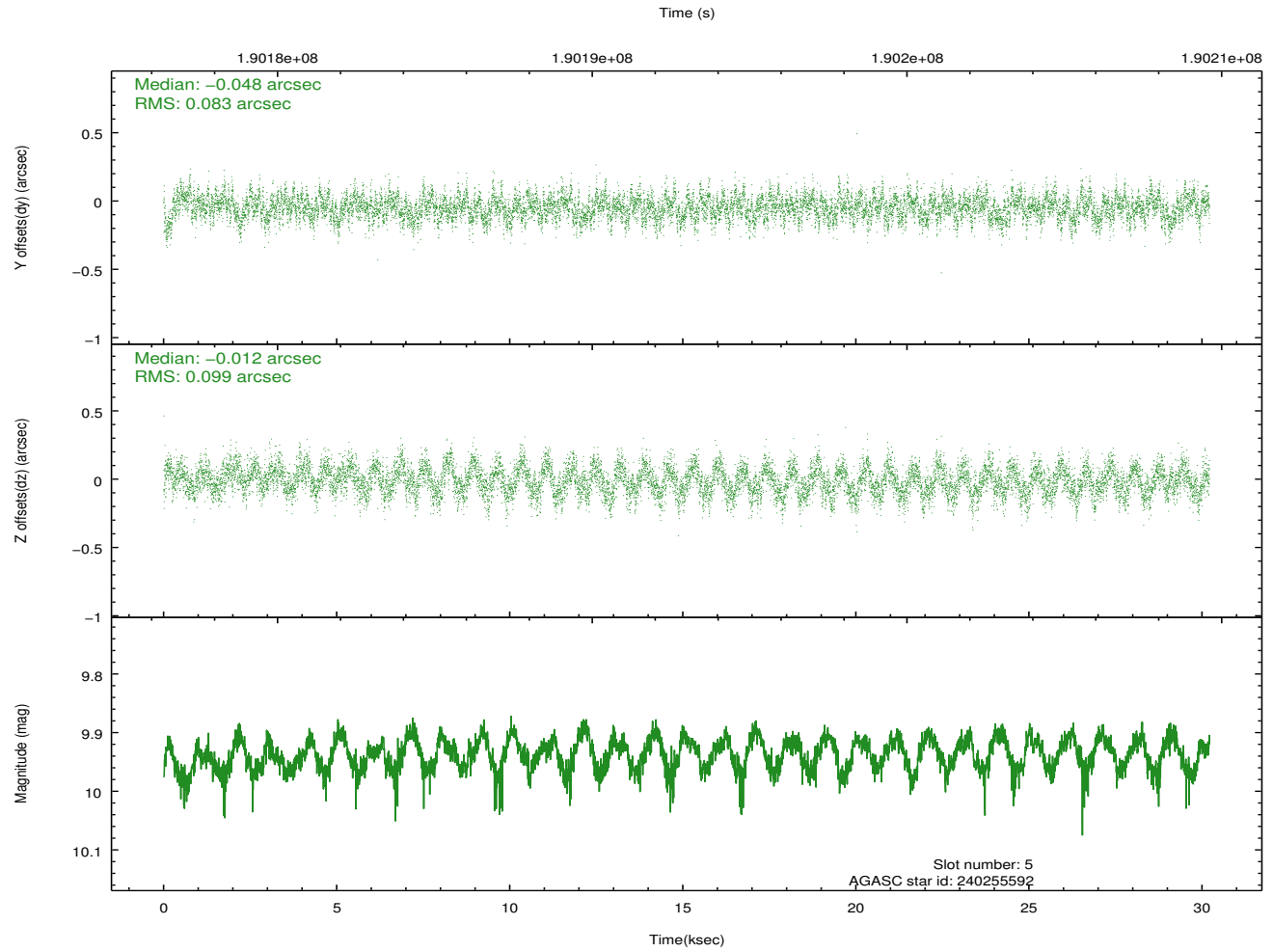
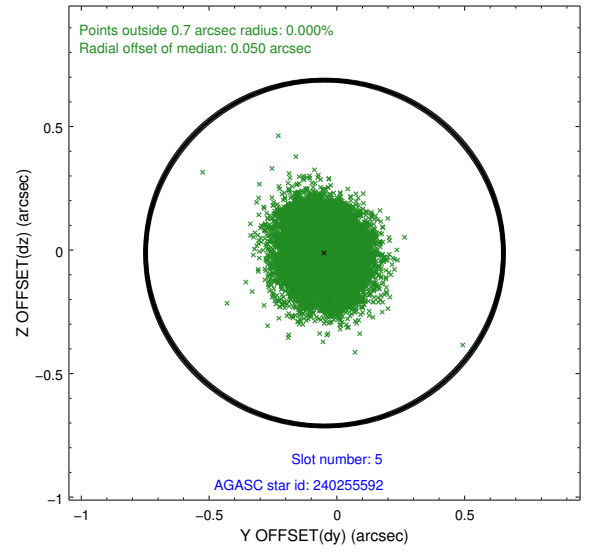
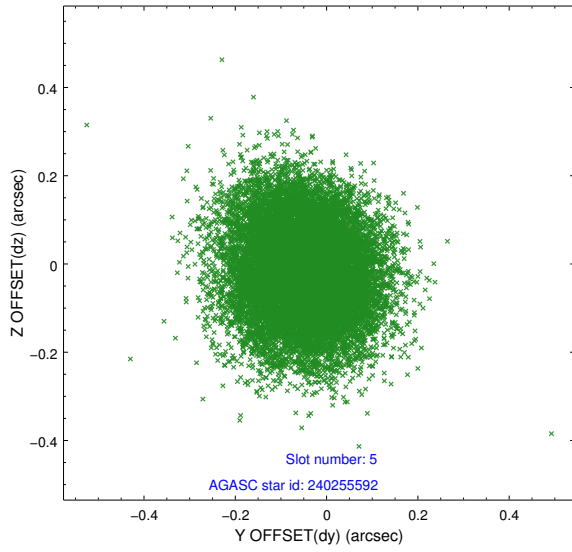
## 2.4.2 Slot 4



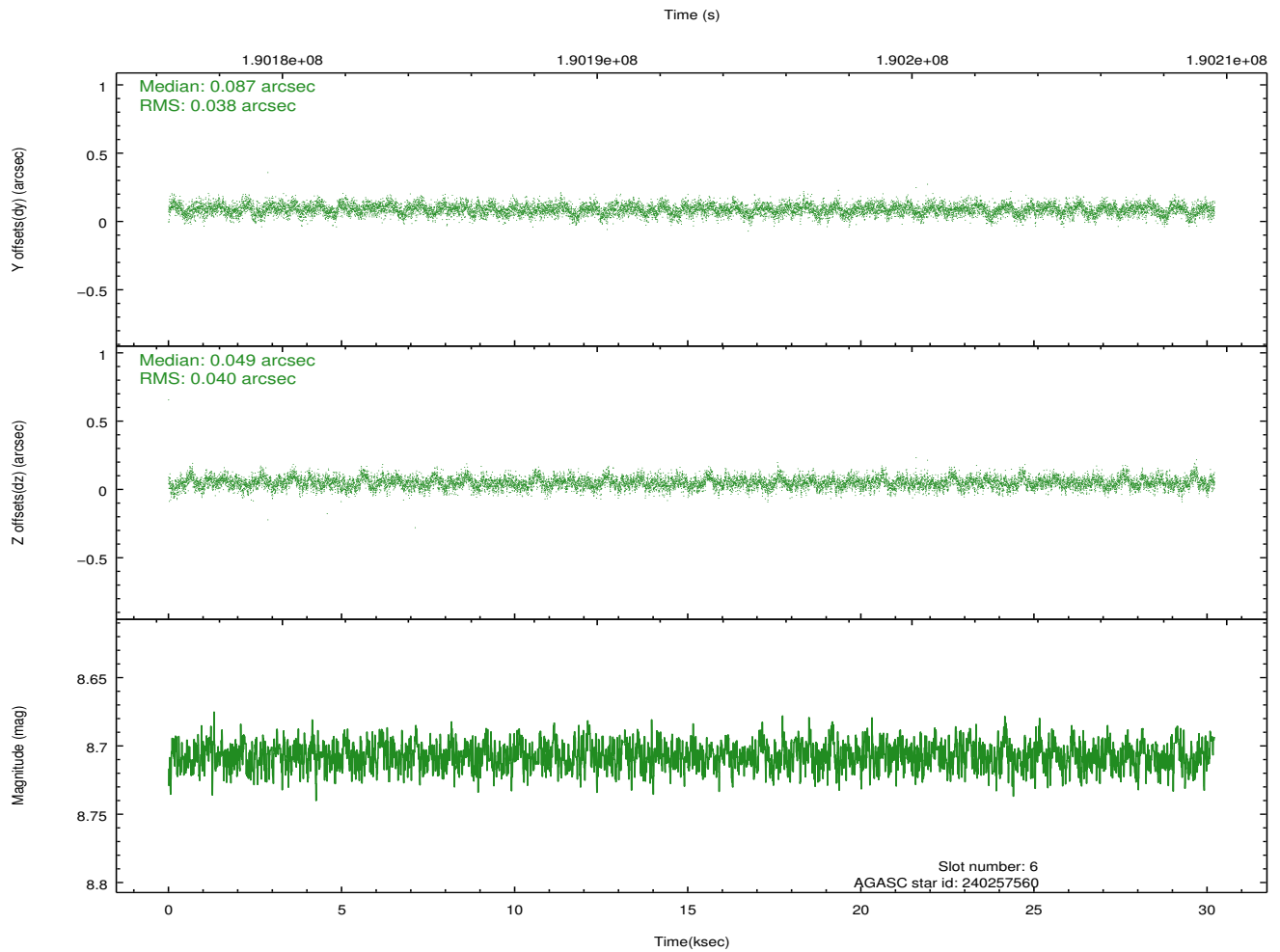
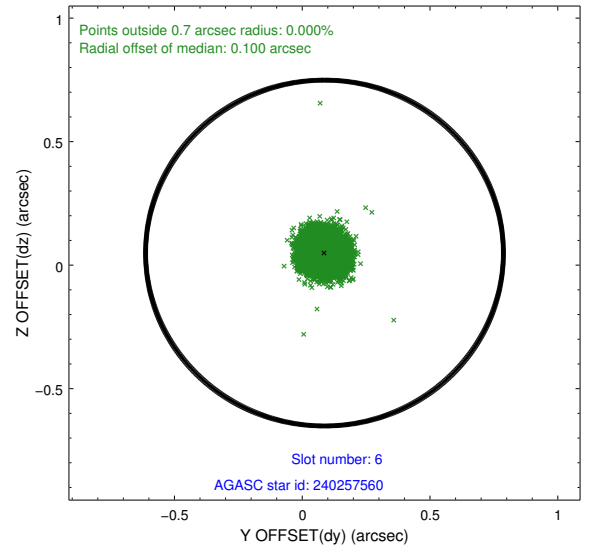
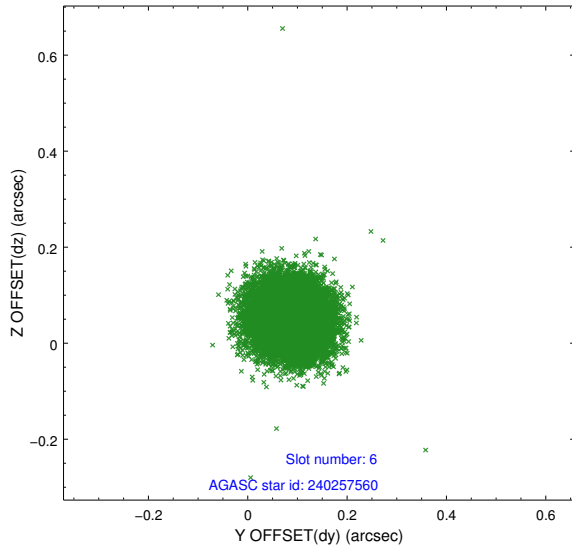
Time (s)



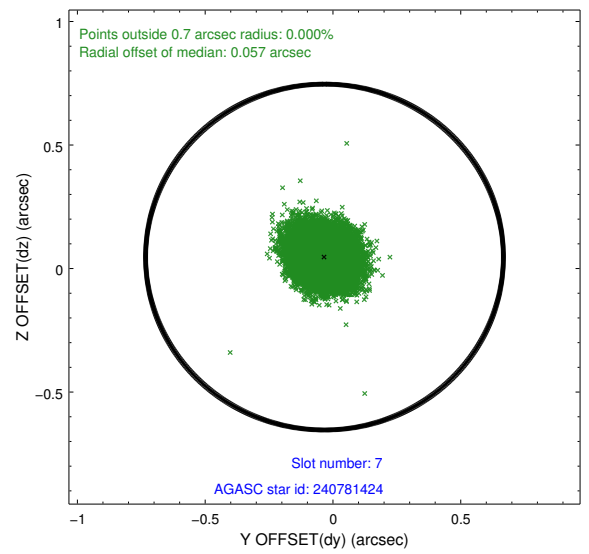
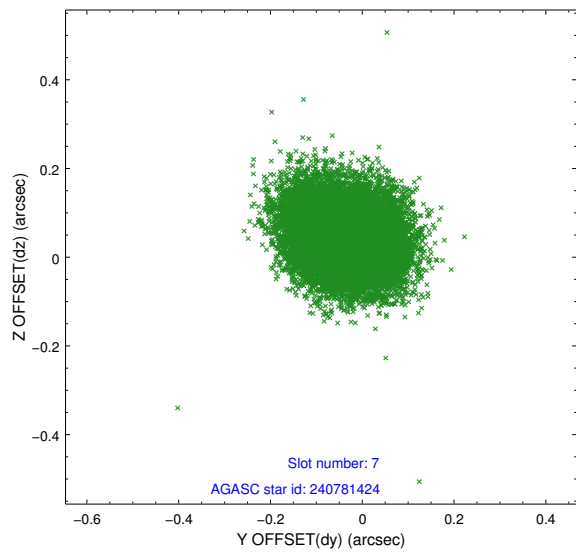
### 2.4.3 Slot 5



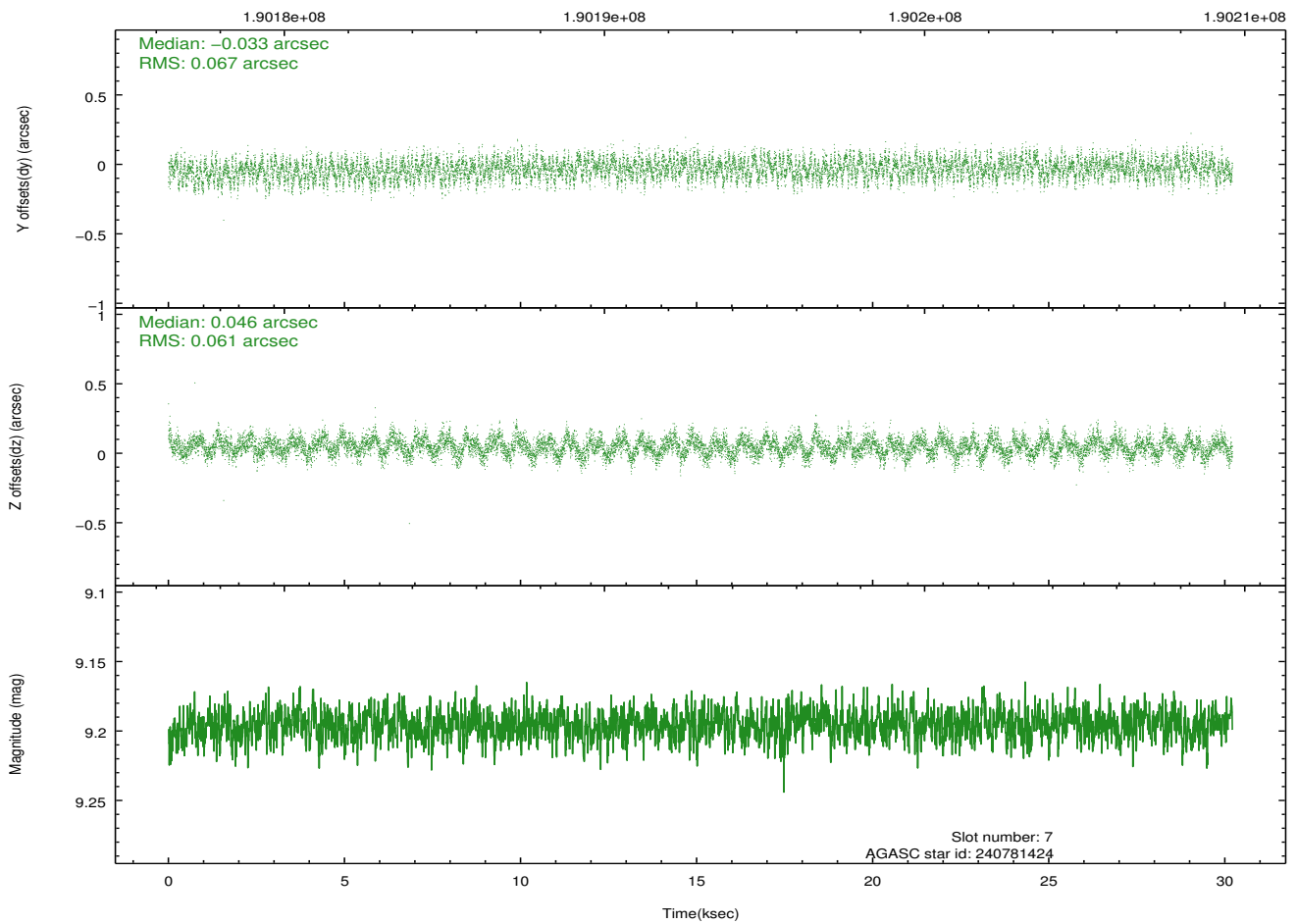
## 2.4.4 Slot 6



## 2.4.5 Slot 7

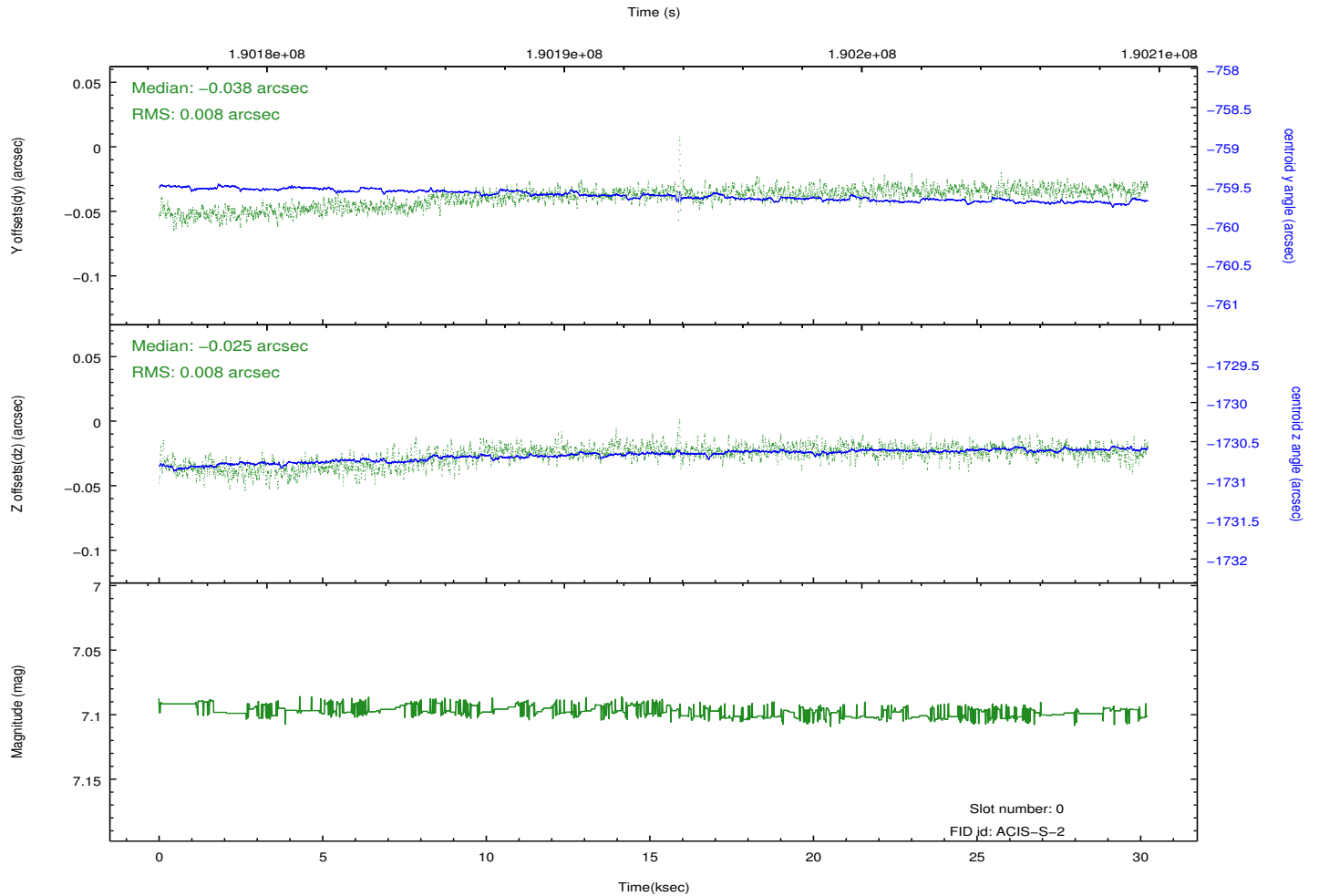
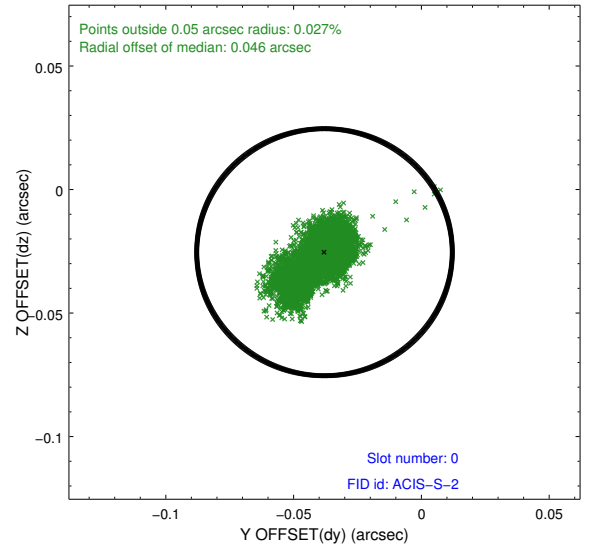
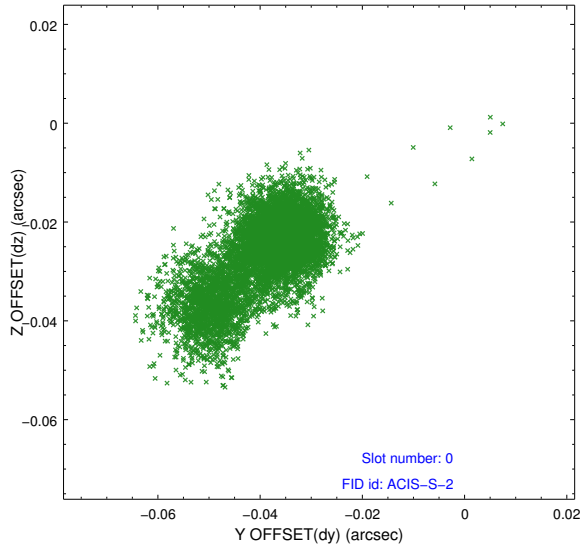


Time (s)

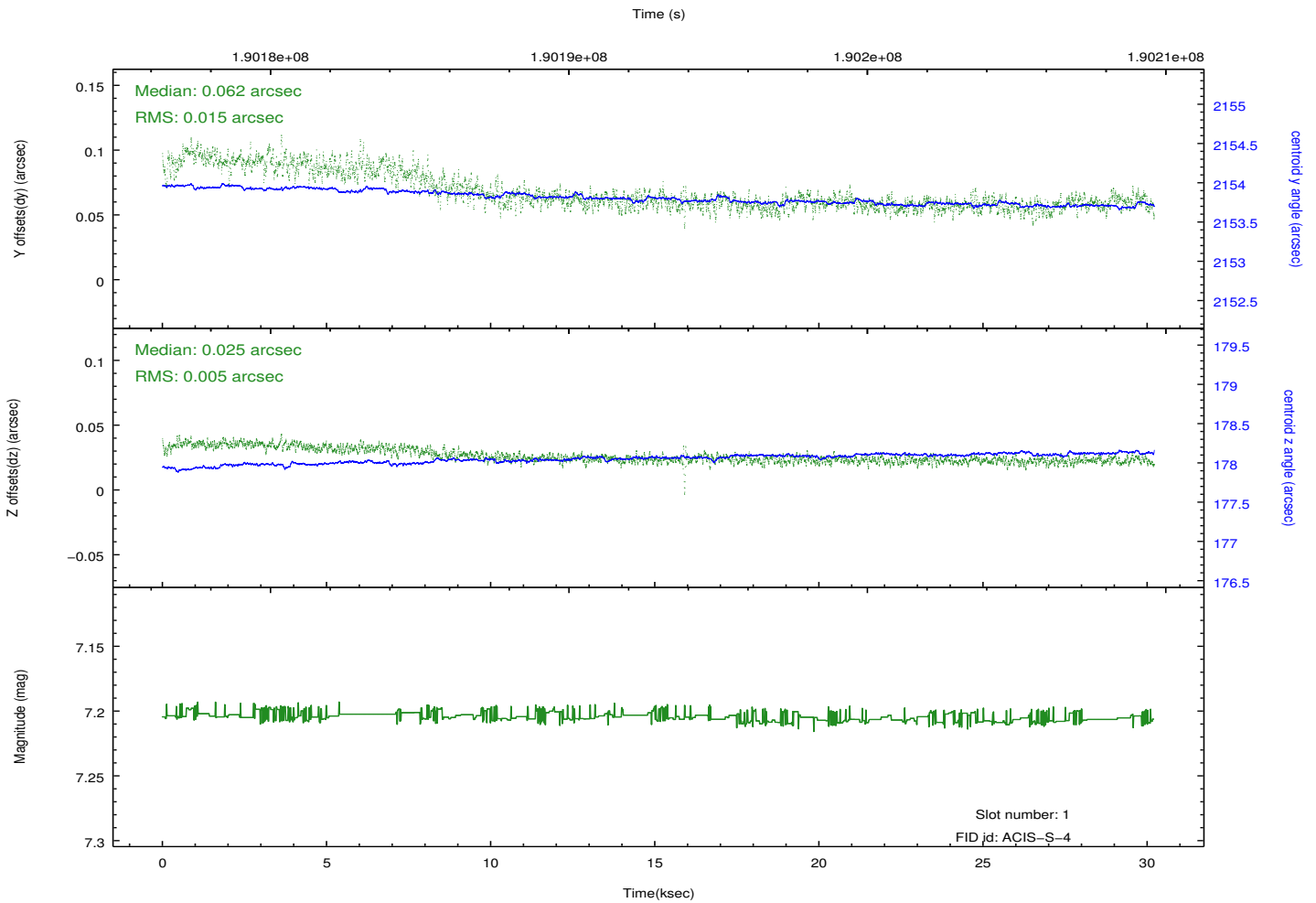
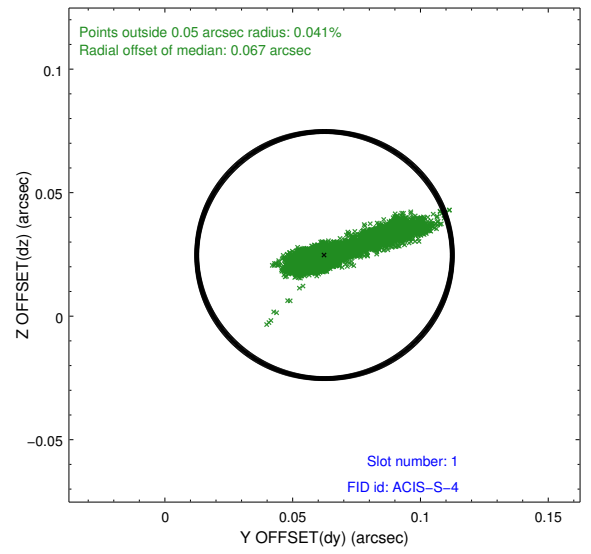
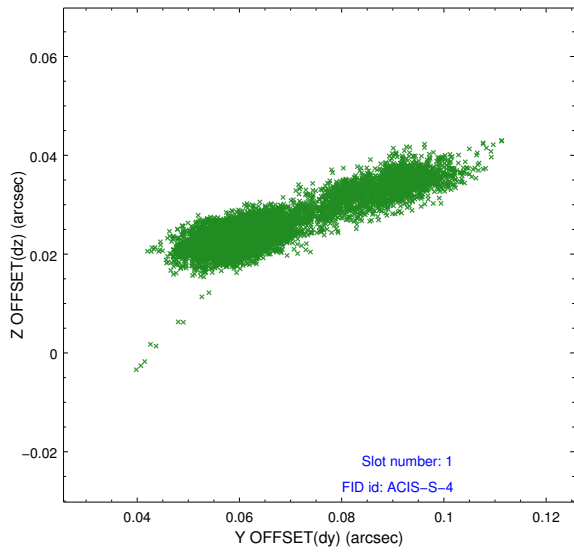


## 2.5 FID Slots

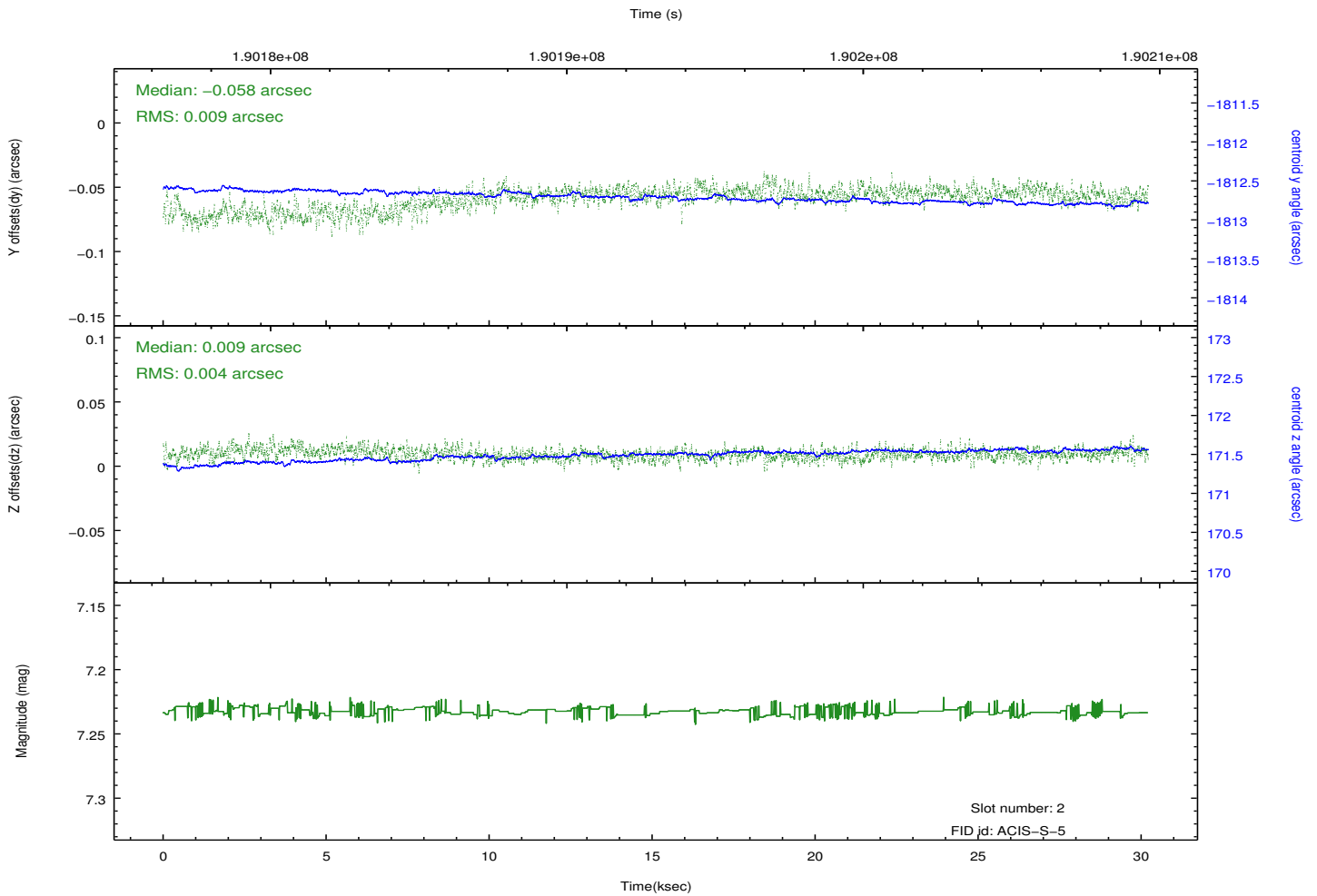
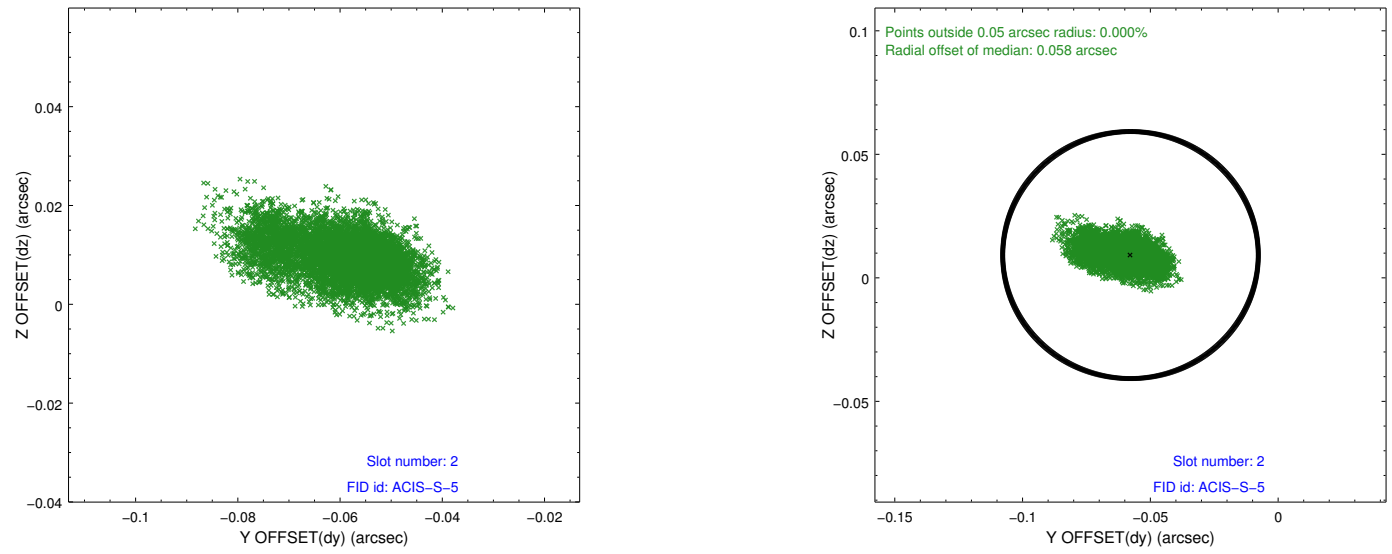
### 2.5.1 Slot 0



## 2.5.2 Slot 1



### 2.5.3 Slot 2



# A Summary

## A.1 Status

V&V Scientist	Jen Lauer
V&V Date (YYYY-MM-DD)	2012.12.04
V&V Edition	1
V&V Disposition and Status	OK
V&V Charge Time	30.11

## A.2 Comments