

V&V Reference Report

L2 ASCDS Version : 8.4.5

Observation 4507 - L2 Version 3
Chandra X-Ray Center

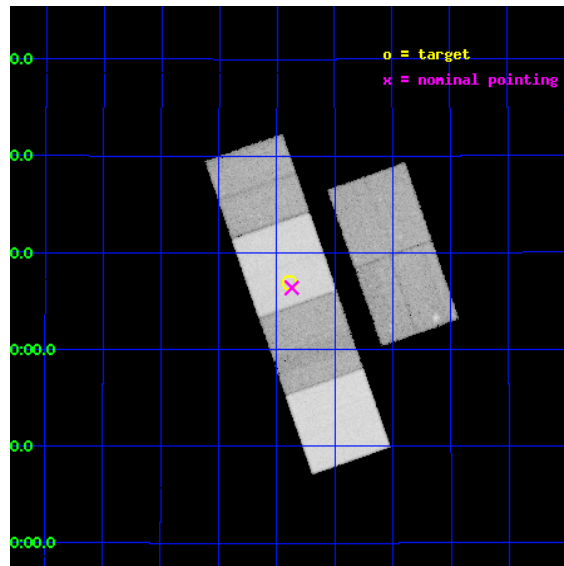
L2 Processing Date : Nov 9 2012

Contents

1	Front	2
2	OBI	3
2.1	OBI	3
2.1.1	Images	3
2.1.2	Bias	3
2.1.3	Parameters	4
2.1.4	Events	4
2.2	Compared Parameters	5
2.3	Aspect	6
2.4	Star Slots	9
2.4.1	Slot 3	9
2.4.2	Slot 4	10
2.4.3	Slot 5	11
2.4.4	Slot 6	12
2.4.5	Slot 7	13
2.5	FID Slots	14
2.5.1	Slot 0	14
2.5.2	Slot 1	15
2.5.3	Slot 2	16
A	Summary	17
A.1	Status	17
A.2	Comments	17

1 Front

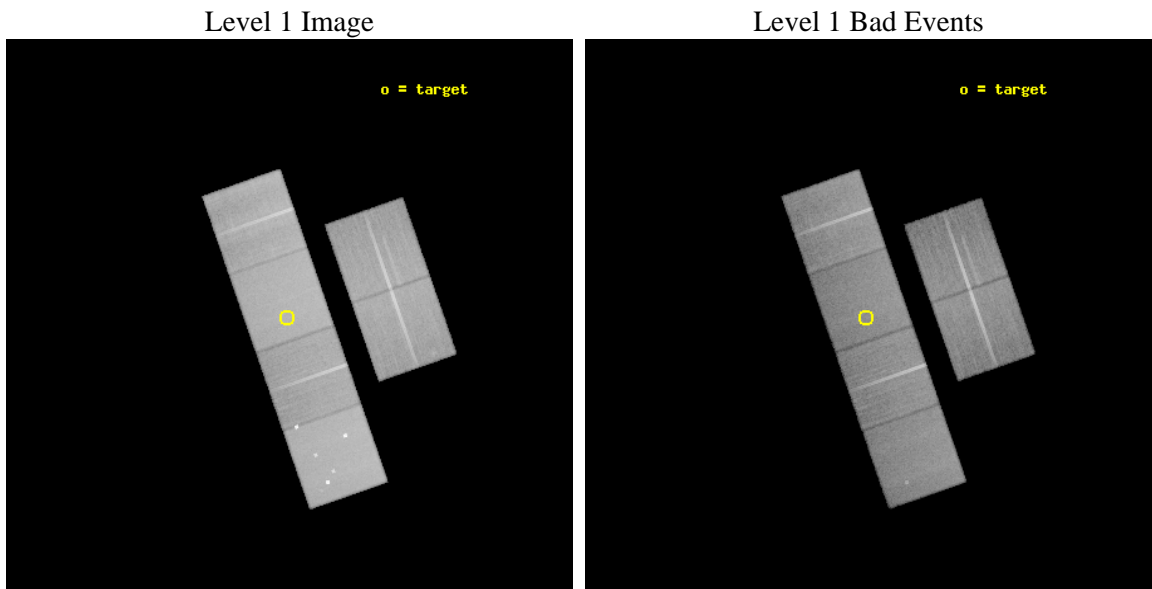
seq_num	200276	Sequence number
obs_id	4507	Observation id
title	Wind-Wind Interactions and Stellar Magnetic Fields in Pre-Planetary Nebulae	Proposal title
observer	Dr. Raghvendra Sahai	Principal investigator
object	AFGL 618	Source name
dtycycle	0	
cycle	P	events from which exps? Prim/Second/Both
ra_targ	70.723333	Observer's specified target RA [deg]
dec_targ	36.114889	Observer's specified target Dec [deg]
ra_nom	70.717461410956	Nominal RA [deg]
dec_nom	36.10644287281	Nominal Dec [deg]
roll_nom	250.76958018942	Nominal Roll [deg]
revision	3	Processing version of data
ontime	46172.799827993	Sum of GTIs [s]
livetime	45588.132034649	Livetime [s]
ontime2	46172.799827993	Sum of GTIs [s]
ontime3	46172.799827993	Sum of GTIs [s]
ontime5	46172.799827993	Sum of GTIs [s]
ontime6	46172.799827993	Sum of GTIs [s]
ontime7	46172.799827993	Sum of GTIs [s]
ontime8	46172.799827993	Sum of GTIs [s]
l2events	540996	Number of level 2 events



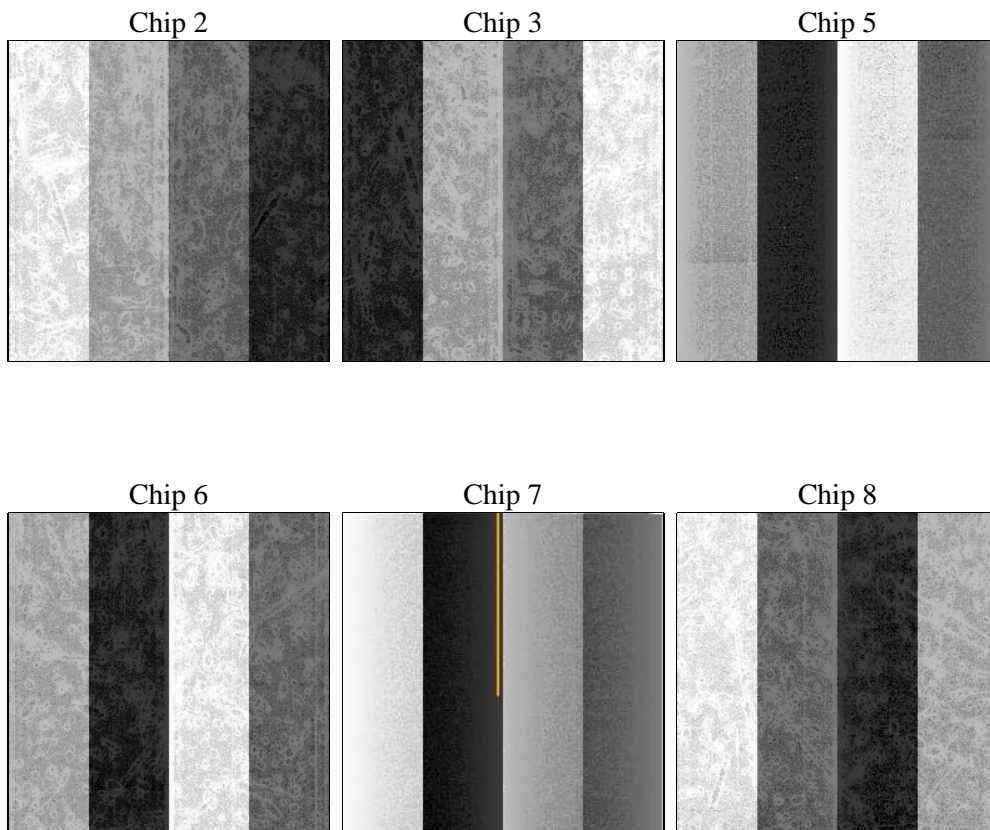
2 OBI

2.1 OBI

2.1.1 Images



2.1.2 Bias



2.1.3 Parameters

obi_num	0	Obi number	sched_exp_time	46000.000000	[s] Scheduled observation exposure time
ascdsver	8.4.5	Processing system revision	ontime	46172.799827993	Sum of GTIs [s]
caldbver	4.5.2	 	ontime2	46172.799827993	Sum of GTIs [s]
date	2012-11-09T23:31:34	Date and time of file creation	ontime3	46172.799827993	Sum of GTIs [s]
revision	3	Processing version of data	ontime5	46172.799827993	Sum of GTIs [s]
			ontime6	46172.799827993	Sum of GTIs [s]
			ontime7	46172.799827993	Sum of GTIs [s]
			ontime8	46172.799827993	Sum of GTIs [s]
			l1events	2160519	Number of level 1 events

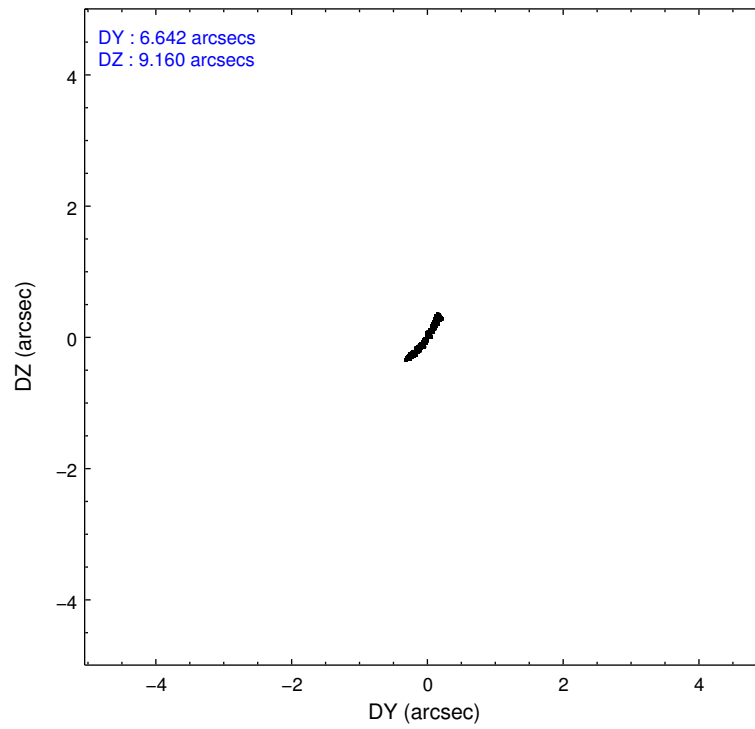
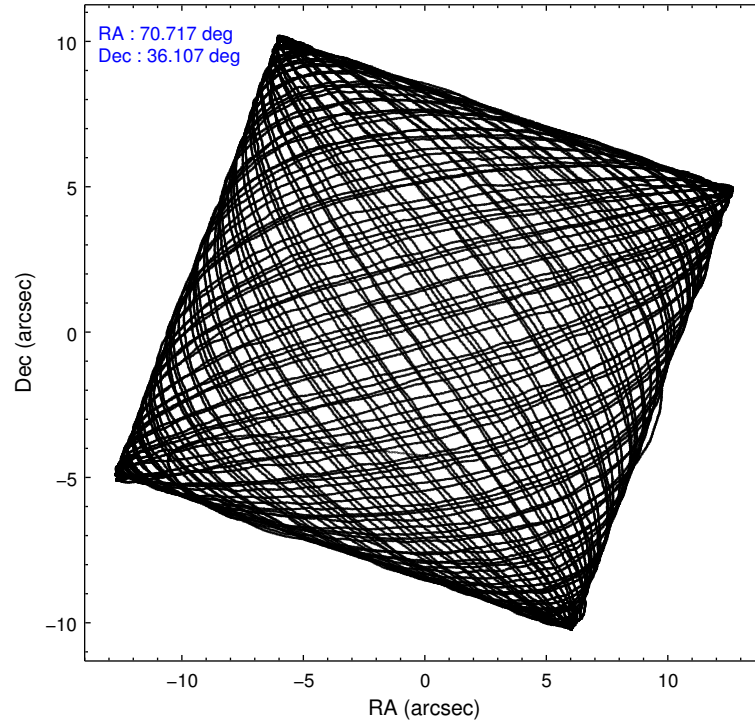
2.1.4 Events

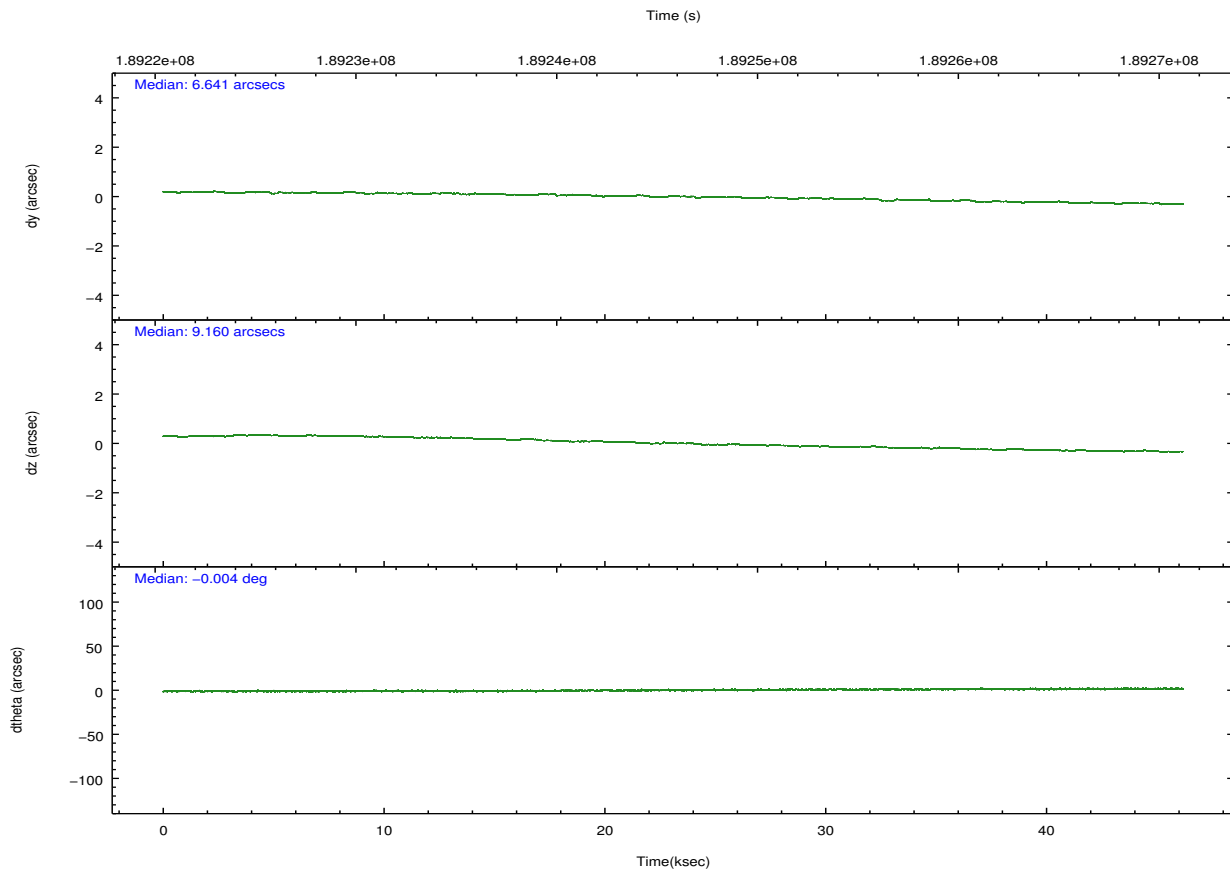
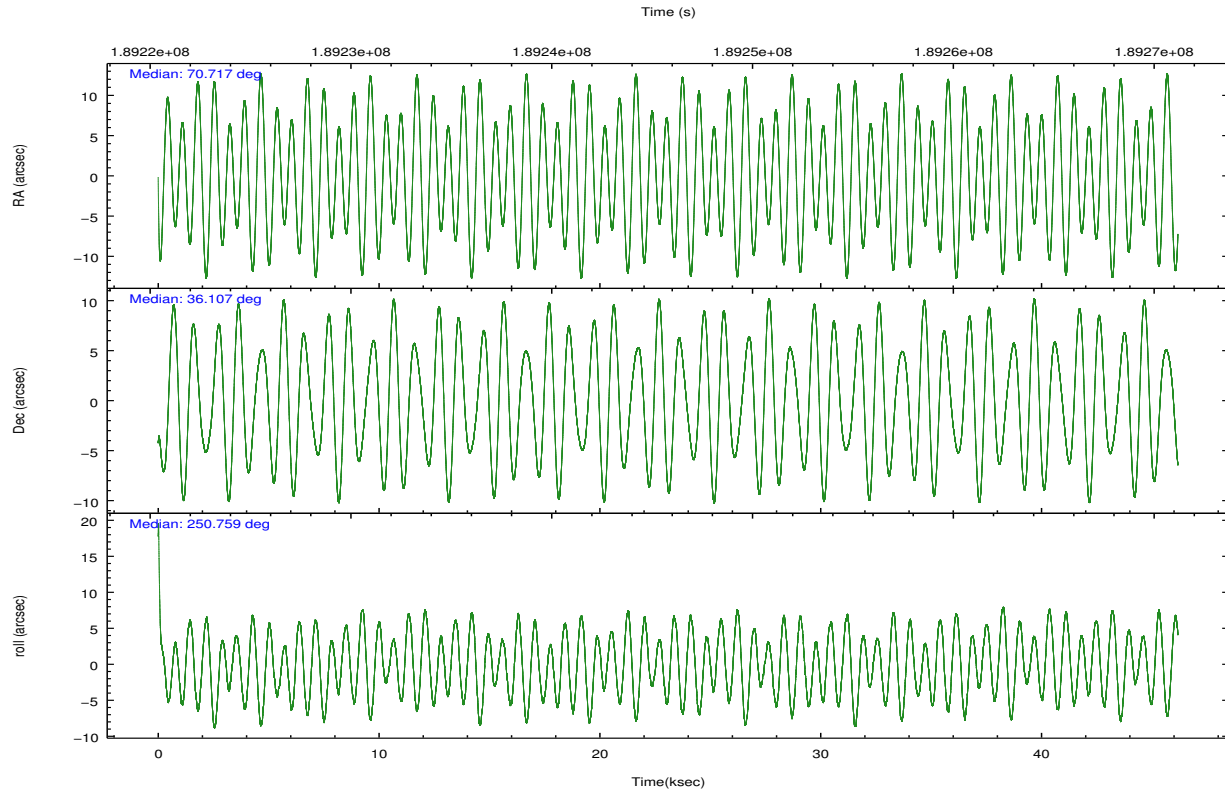
	ccd 2	ccd 3	ccd 5	ccd 6	ccd 7	ccd 8		ccd 2	ccd 3	ccd 5	ccd 6	ccd 7	ccd 8
level 1 events	304613	292124	466658	304416	414202	378506	grade 0 events	25169	24888	35446	23584	15810	35526
rejected events	257985	245731	240895	257342	236412	288914		8%	8%	7%	7%	3%	9%
rejected %	84%	84%	51%	84%	57%	76%	grade 1 events	191	218	518	179	329	282
								0%	0%	0%	0%	0%	0%
							grade 2 events	8107	7596	63520	8626	33910	18120
								2%	2%	13%	2%	8%	4%
							grade 3 events	3642	3816	9120	3750	15107	8417
								1%	1%	1%	1%	3%	2%
							grade 4 events	3672	3759	8180	3650	15325	7781
								1%	1%	1%	1%	3%	2%
							grade 5 events	11755	12826	32651	13597	38193	17741
								3%	4%	6%	4%	9%	4%
							grade 6 events	6215	6534	110755	7672	98577	20107
								2%	2%	23%	2%	23%	5%
							grade 7 events	245862	232487	206468	243358	196951	270532
								80%	79%	44%	79%	47%	71%

2.2 Compared Parameters

Parameter	Planned	Actual	Parameter	Planned	Actual
Instrument	ACIS	ACIS	Obspar format version number	7	7
Detector	ACIS-235678	ACIS-235678	Obspar file type	PREDICTED	ACTUAL
Grating	NONE	NONE	Obspar update status	NONE	UPDATED
Data mode	FAINT	FAINT	Number of optional ACIS chips dropped	0	0
Observation mode	POINTING	POINTING	On-chip summing requested	N	N
[deg] Pointing RA	70.710725	70.7174614109561	Subarray requested	NONE	NONE
[deg] Pointing Dec	36.133138	36.1064428728105	Alternating exposures requested	N	N
[deg] Pointing Roll	250.616916	250.7695801894193	[s] Primary exposure time	0.000000	3.2
[mm] SIM focus pos	-0.684267	-0.6828225247311905			
[mm] SIM defocus	0	0.001444936568705701			
[mm] SIM translation stage pos	-190.132523	-190.1400660498719			
[mm] SIM translation stage offset	0	0.00754346686406393			
[s] Observation start time (MET)	189222880.184000	189221688.60694			
Observation start date	2003-12-31T01:53:36	2003-12-31T01:34:48			
[s] Observation end time (MET)	189268880.184000	189270340.74656			
Observation end date	2003-12-31T14:40:16	2003-12-31T15:05:40			
Read mode	TIMED	TIMED			

2.3 Aspect



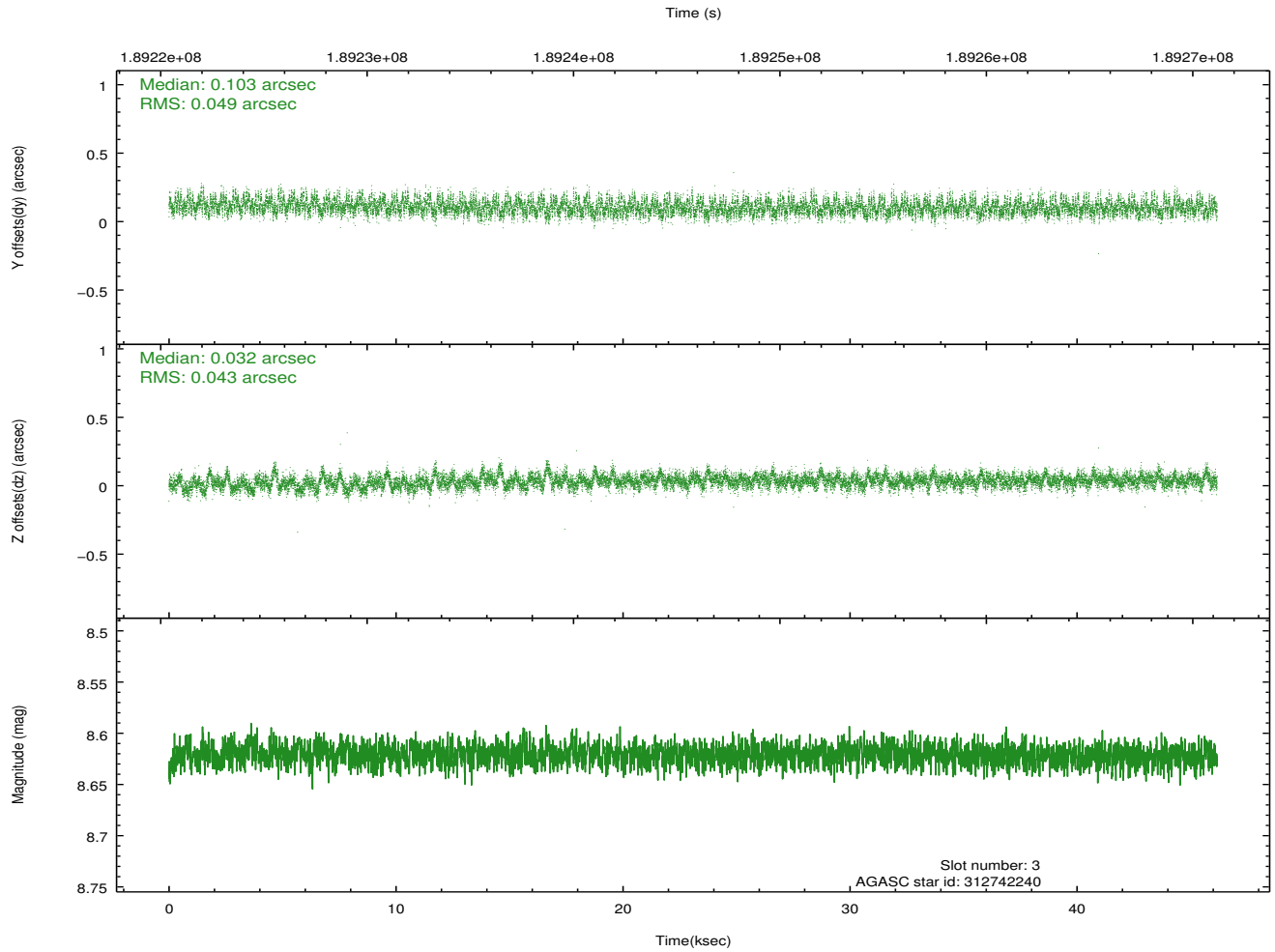
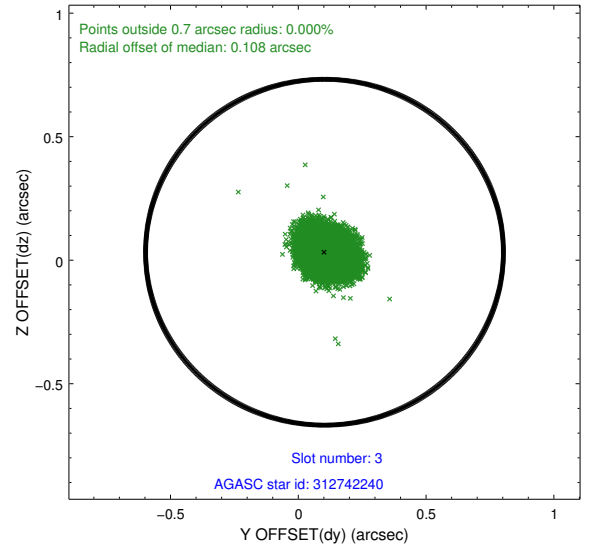
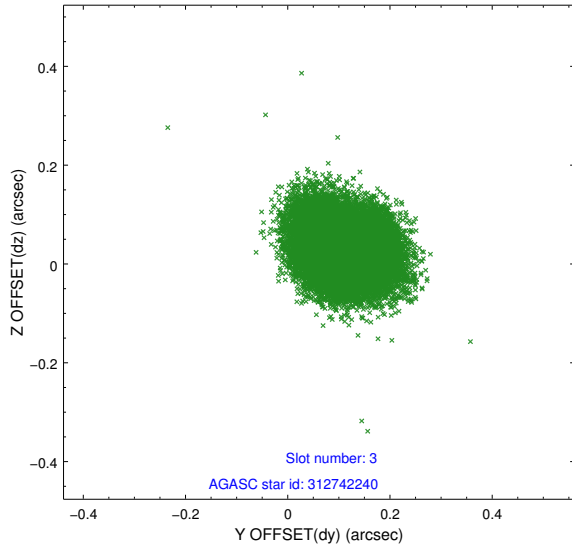


Slot Statistics

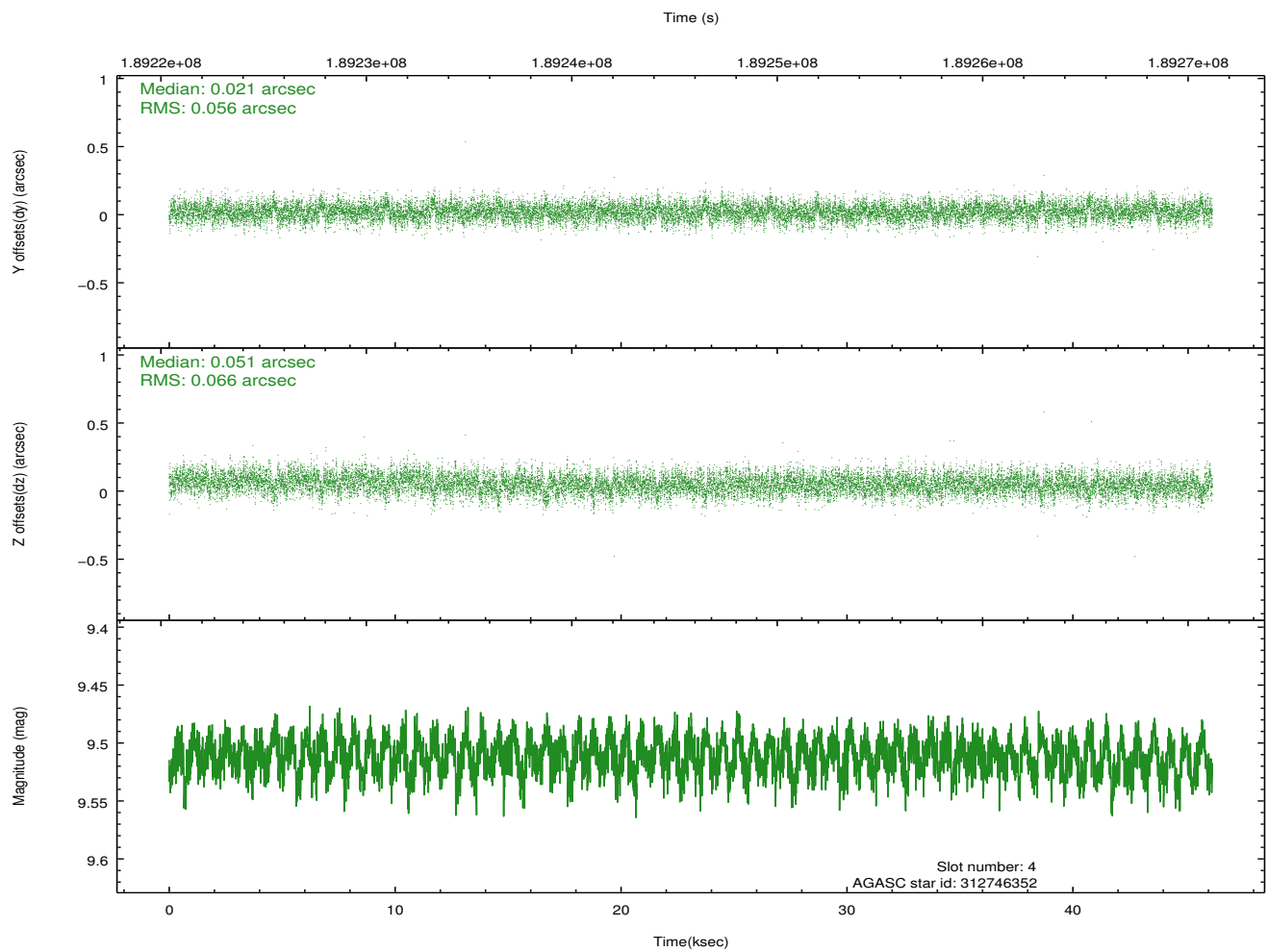
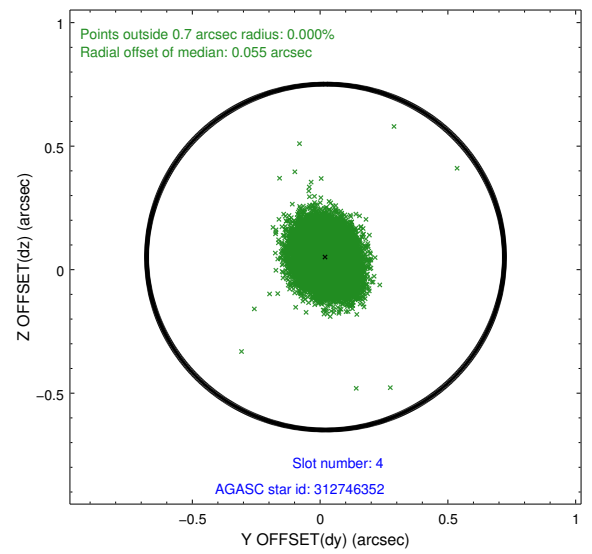
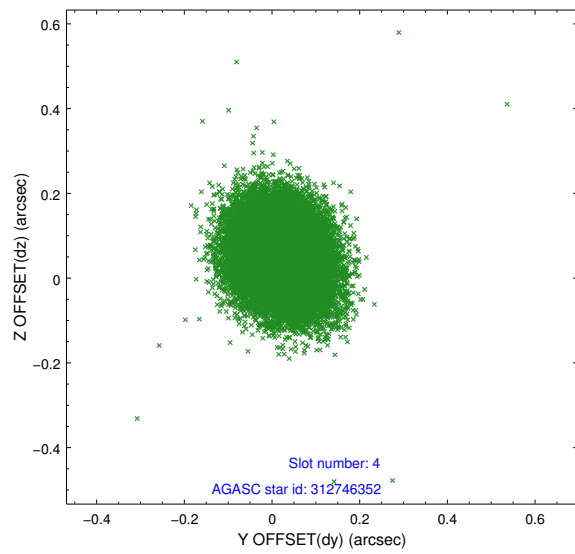
slot	status	id	mag	n_pts	med_dy	med_dz	dr1	dr2	ra	dec	mean_y	mean_z
0	FID	ACIS-S-2	7.10	11261	-0.041	-0.042	0.011	0.025	0.000000	0.000000	-759.39	-1730.44
1	FID	ACIS-S-4	7.20	11264	0.077	0.031	0.010	0.024	0.000000	0.000000	2153.99	178.14
2	FID	ACIS-S-5	7.23	11263	-0.067	0.019	0.011	0.026	0.000000	0.000000	-1812.28	171.76
3	GUIDE	312742240	8.62	22522	0.103	0.032	0.069	0.112	71.496999	36.285377	-1283.00	1967.44
4	GUIDE	312746352	9.51	22515	0.021	0.051	0.091	0.150	69.967535	36.238633	350.77	-2163.95
5	GUIDE	312747416	8.29	22525	0.031	-0.045	0.079	0.125	69.854132	35.954270	1426.36	-2144.33
6	GUIDE	312750096	8.12	22524	-0.054	0.010	0.057	0.090	70.656711	36.311567	-553.64	-360.95
7	GUIDE	312748448	8.44	22518	-0.101	-0.047	0.085	0.131	71.381649	35.746317	656.40	2309.55

2.4 Star Slots

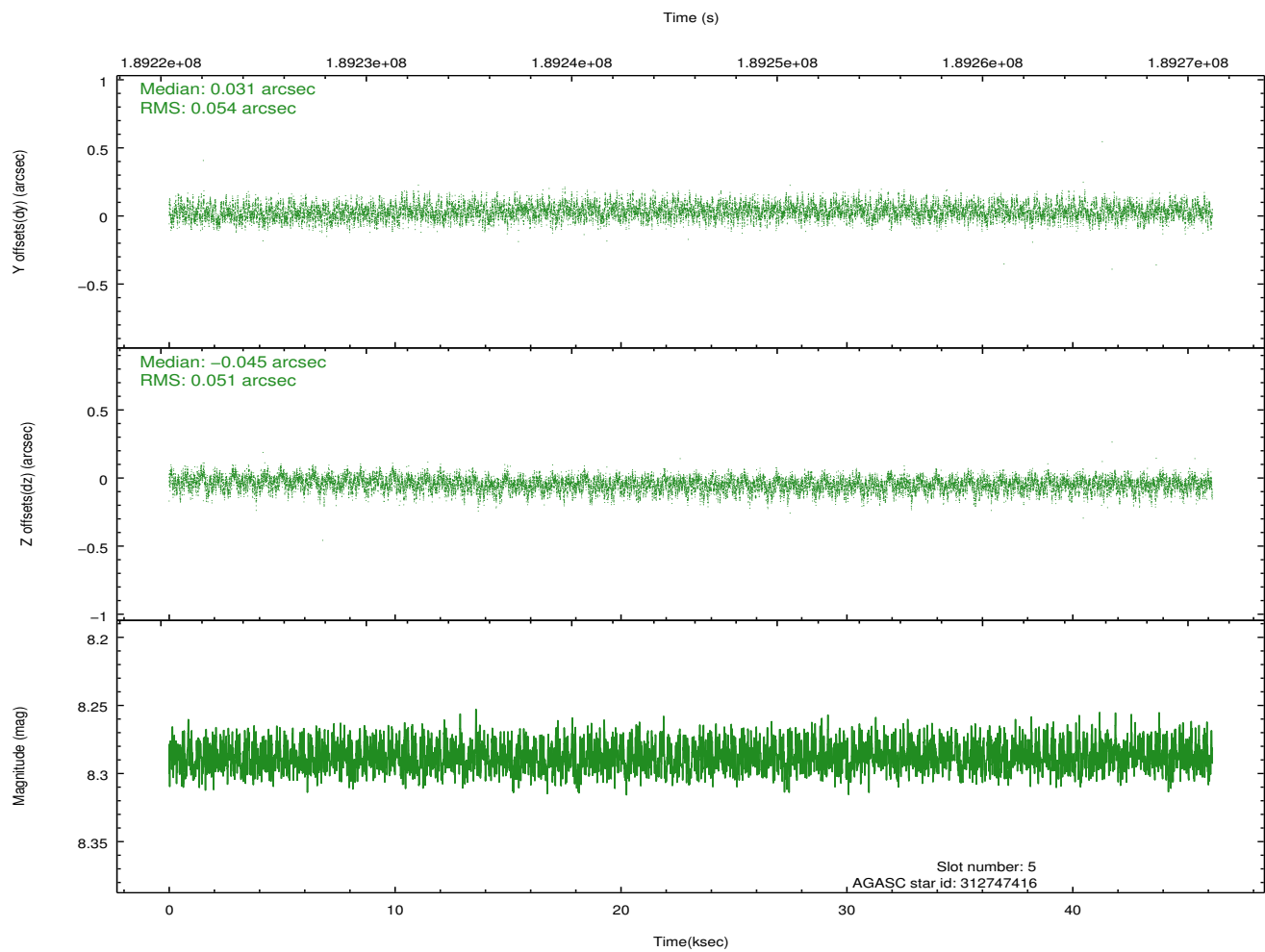
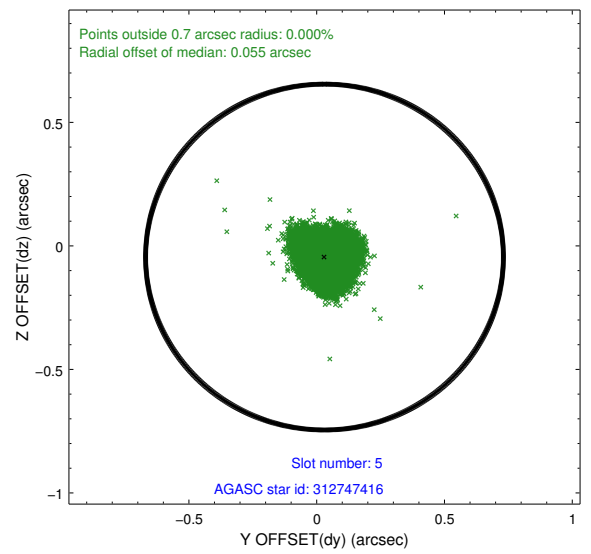
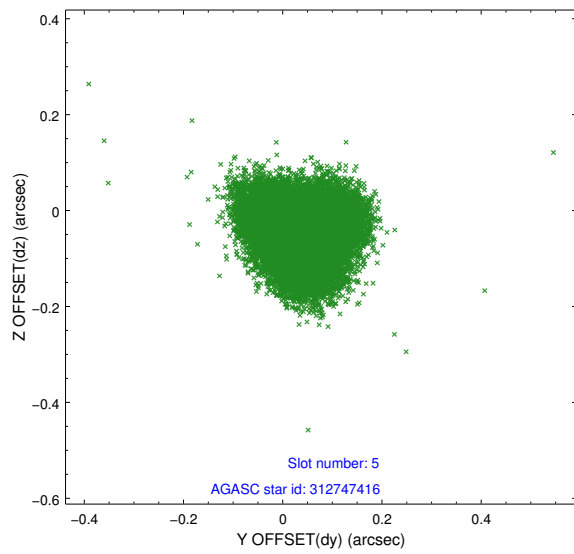
2.4.1 Slot 3



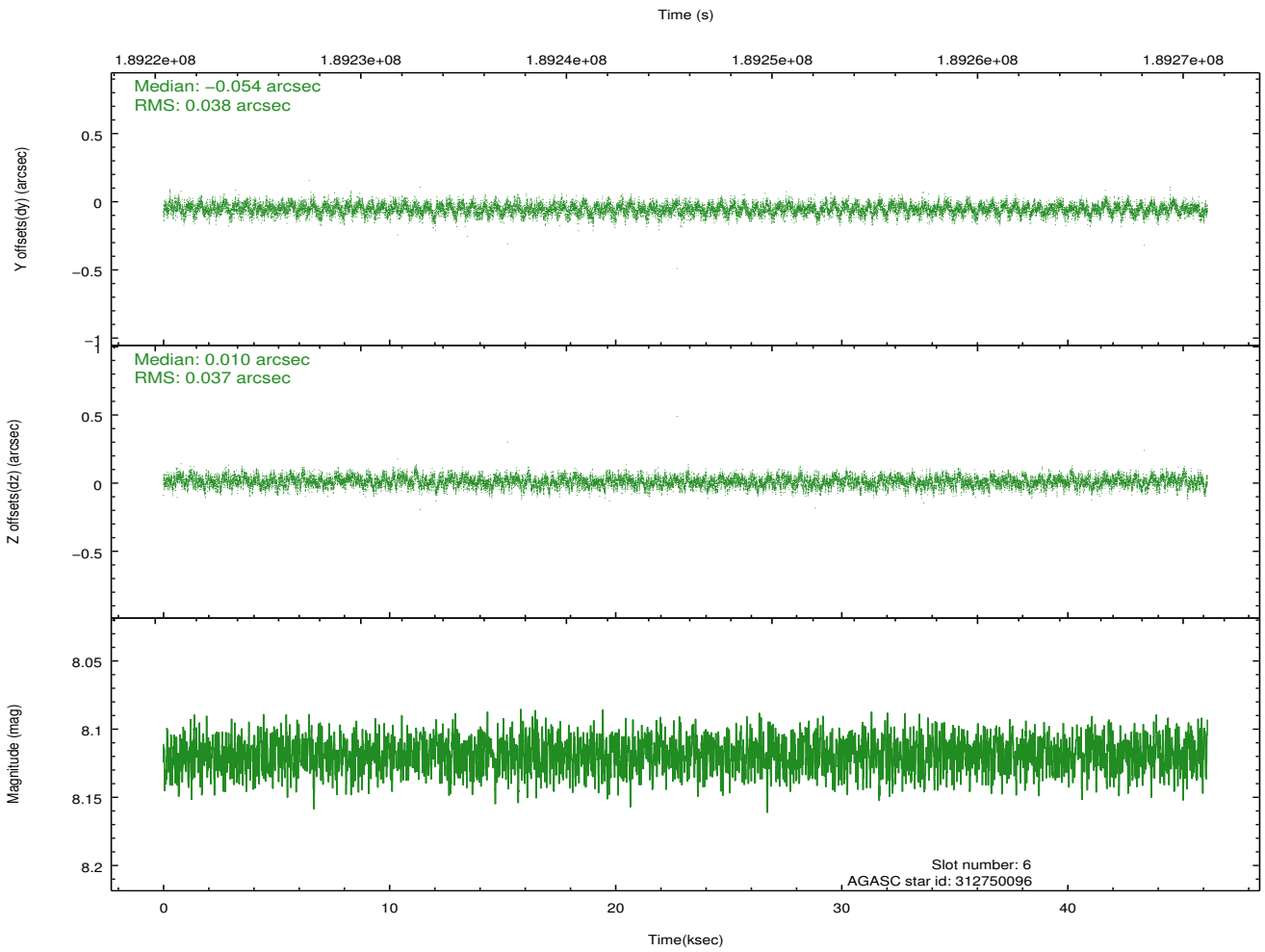
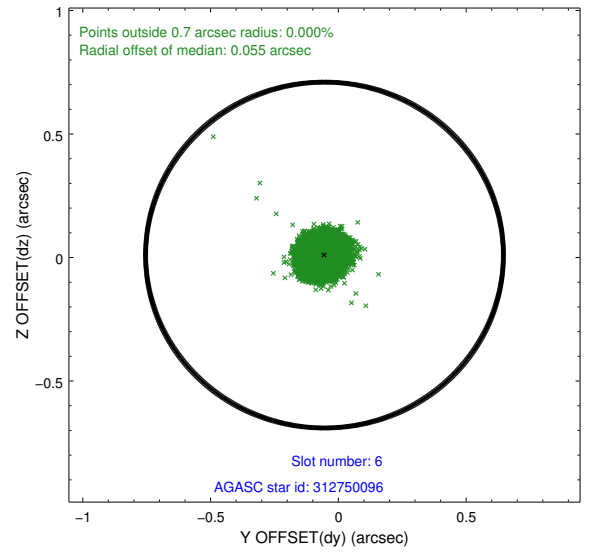
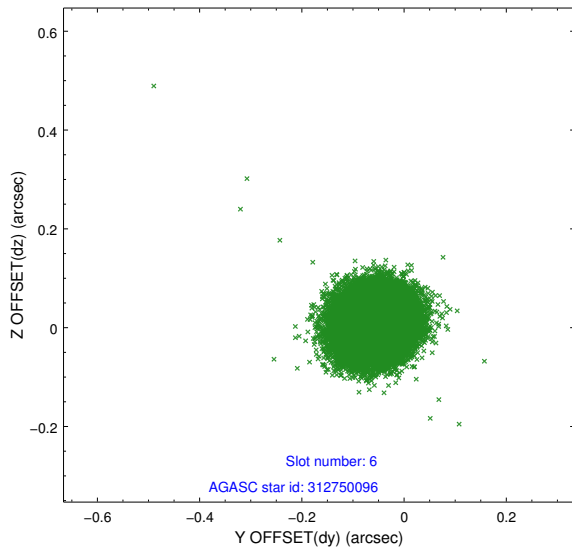
2.4.2 Slot 4



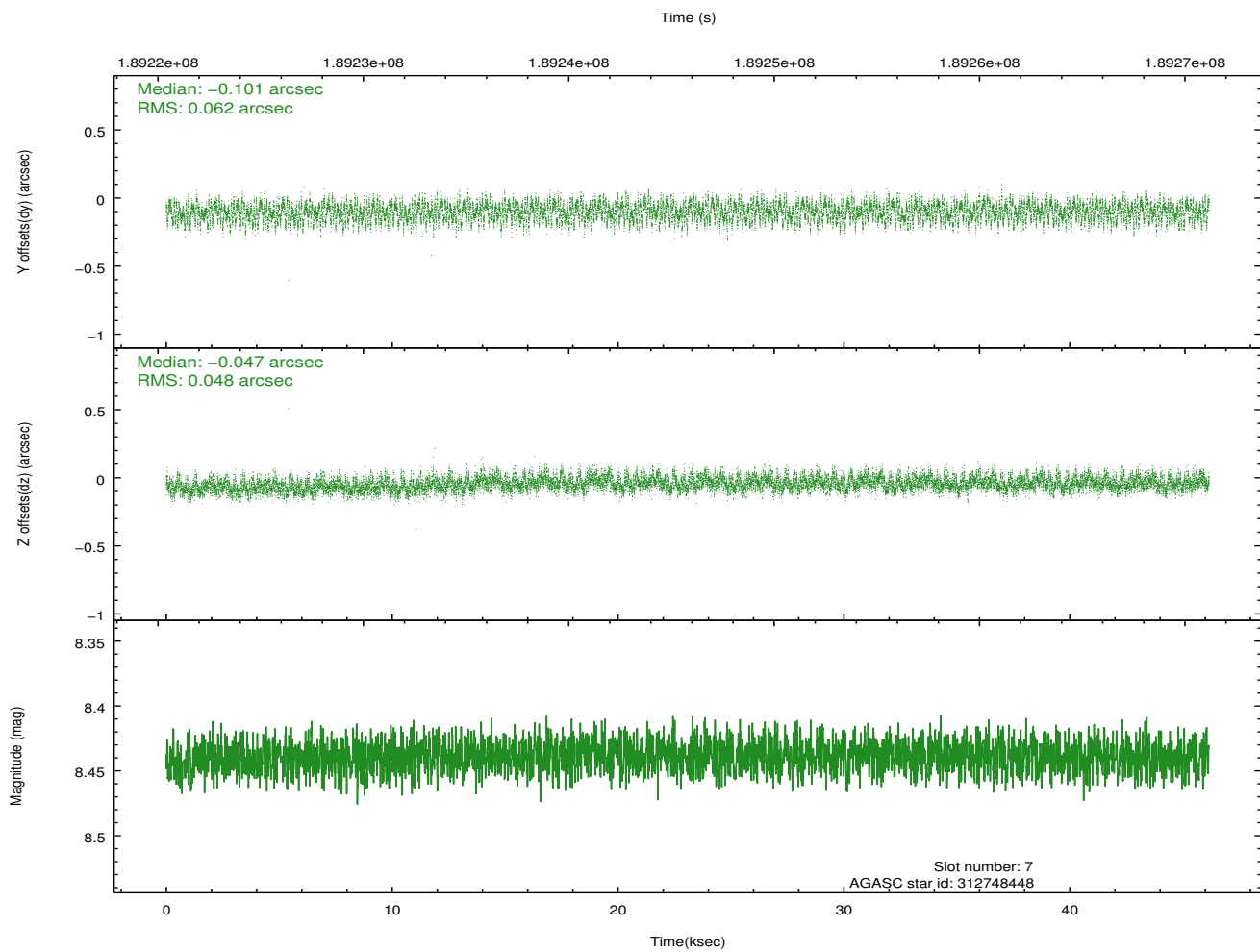
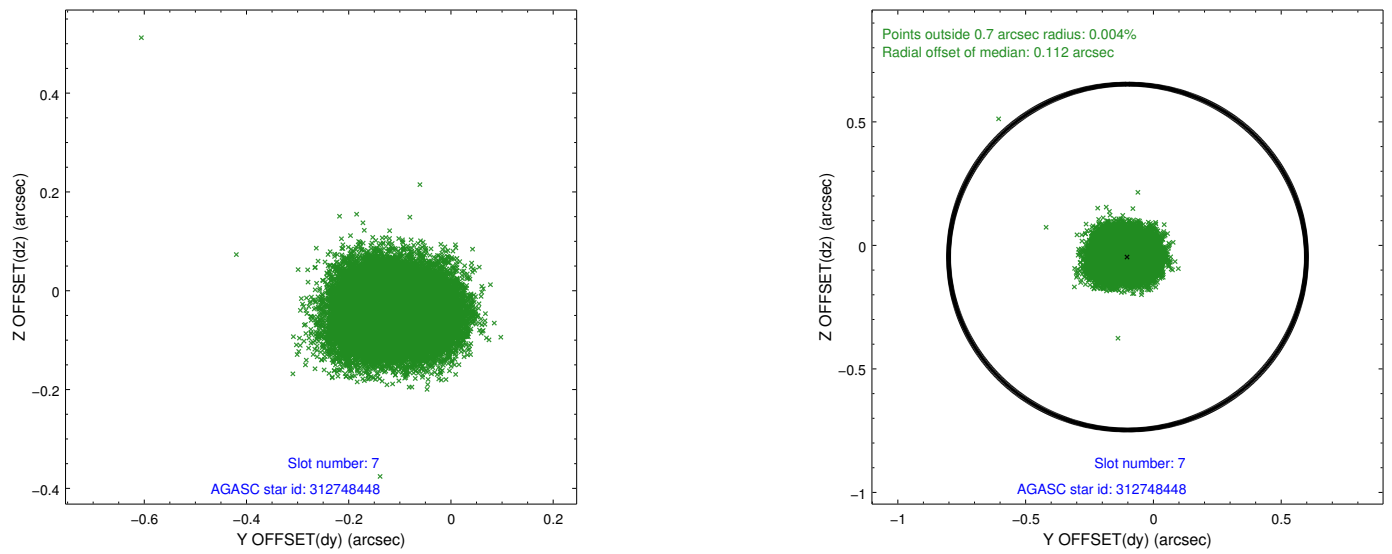
2.4.3 Slot 5



2.4.4 Slot 6

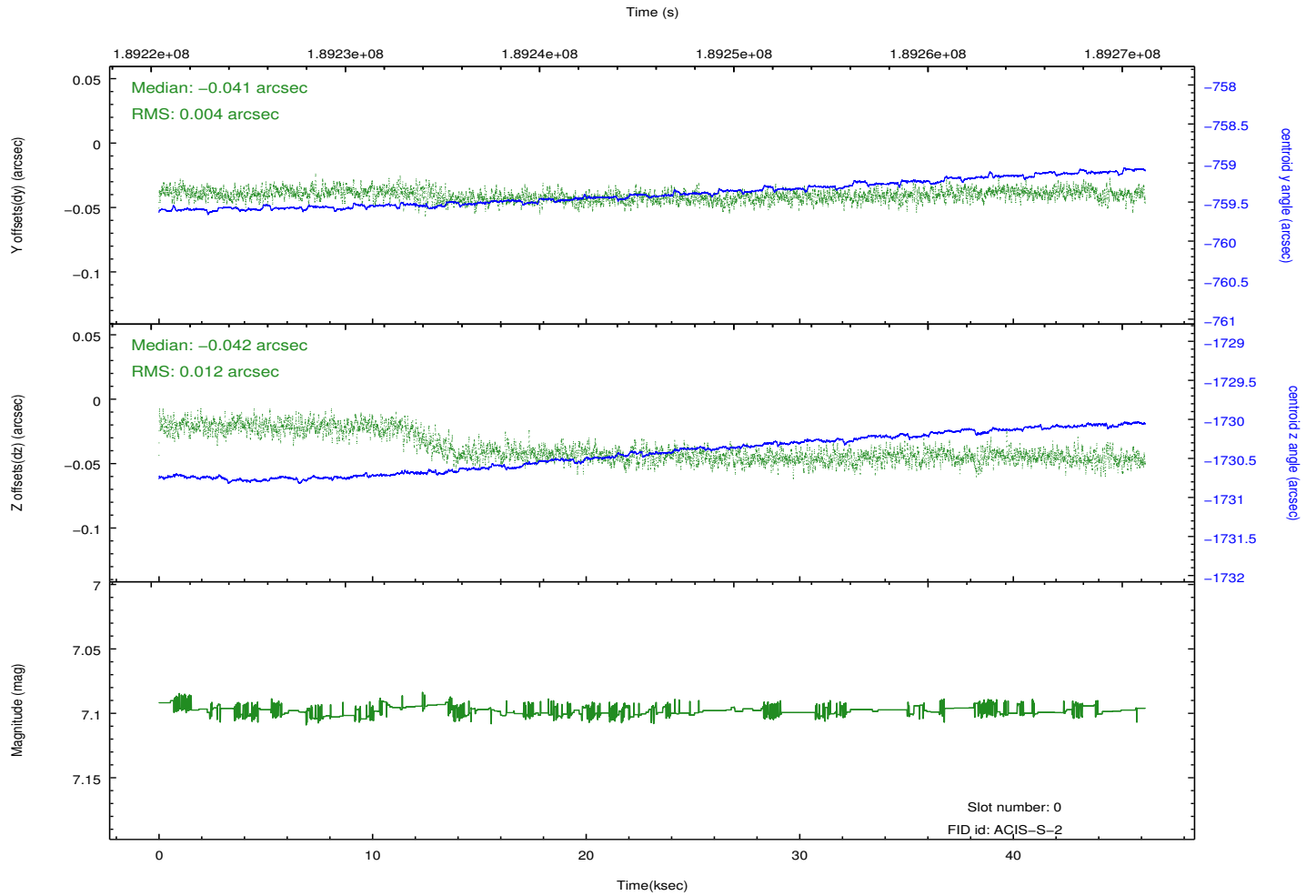
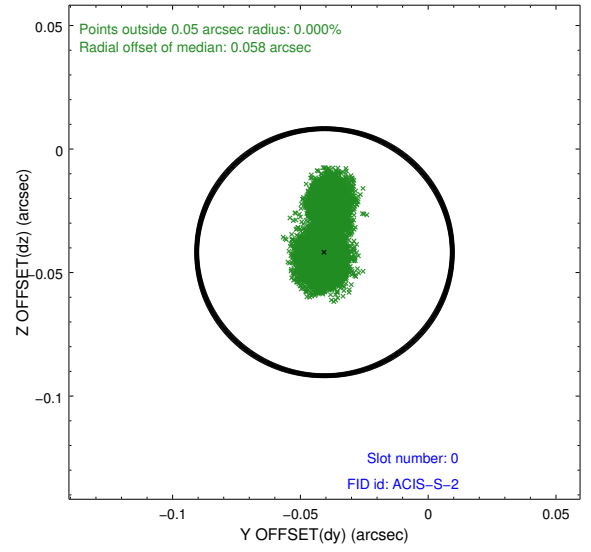
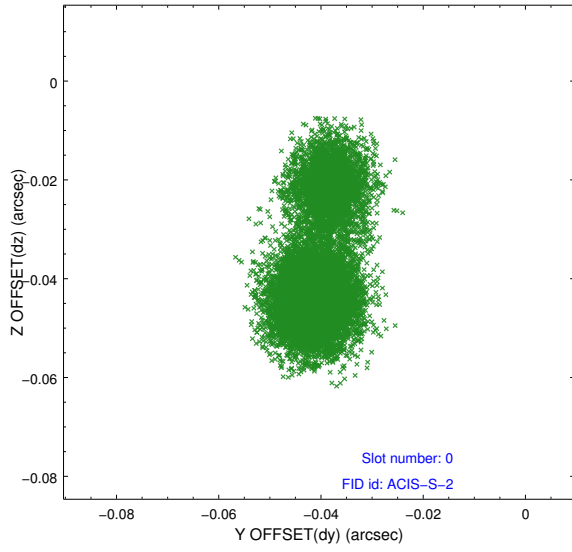


2.4.5 Slot 7

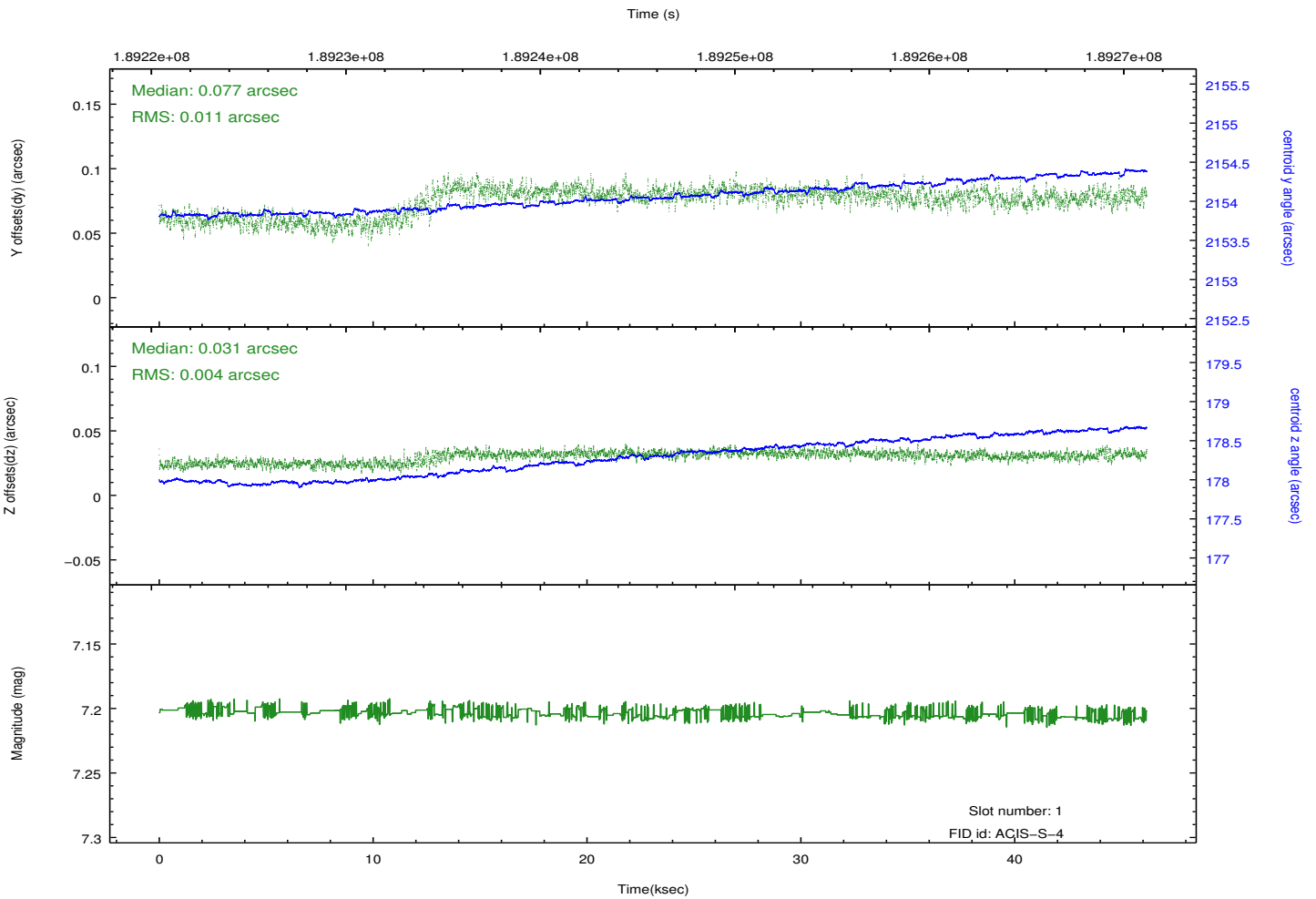
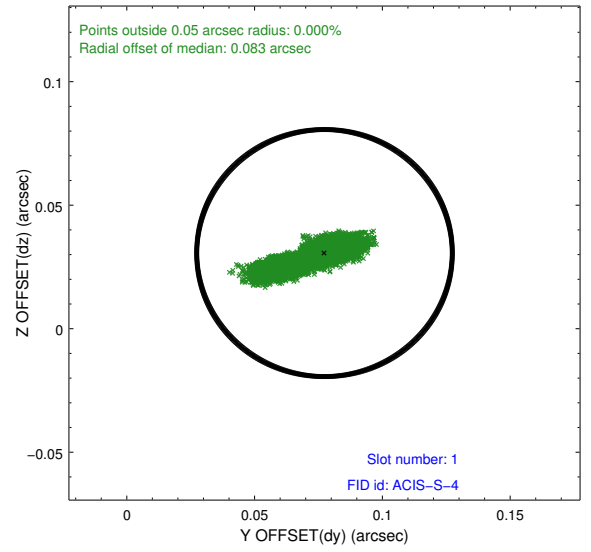
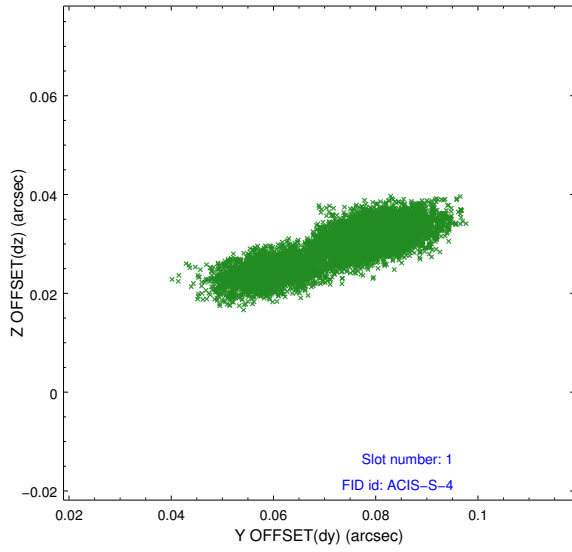


2.5 FID Slots

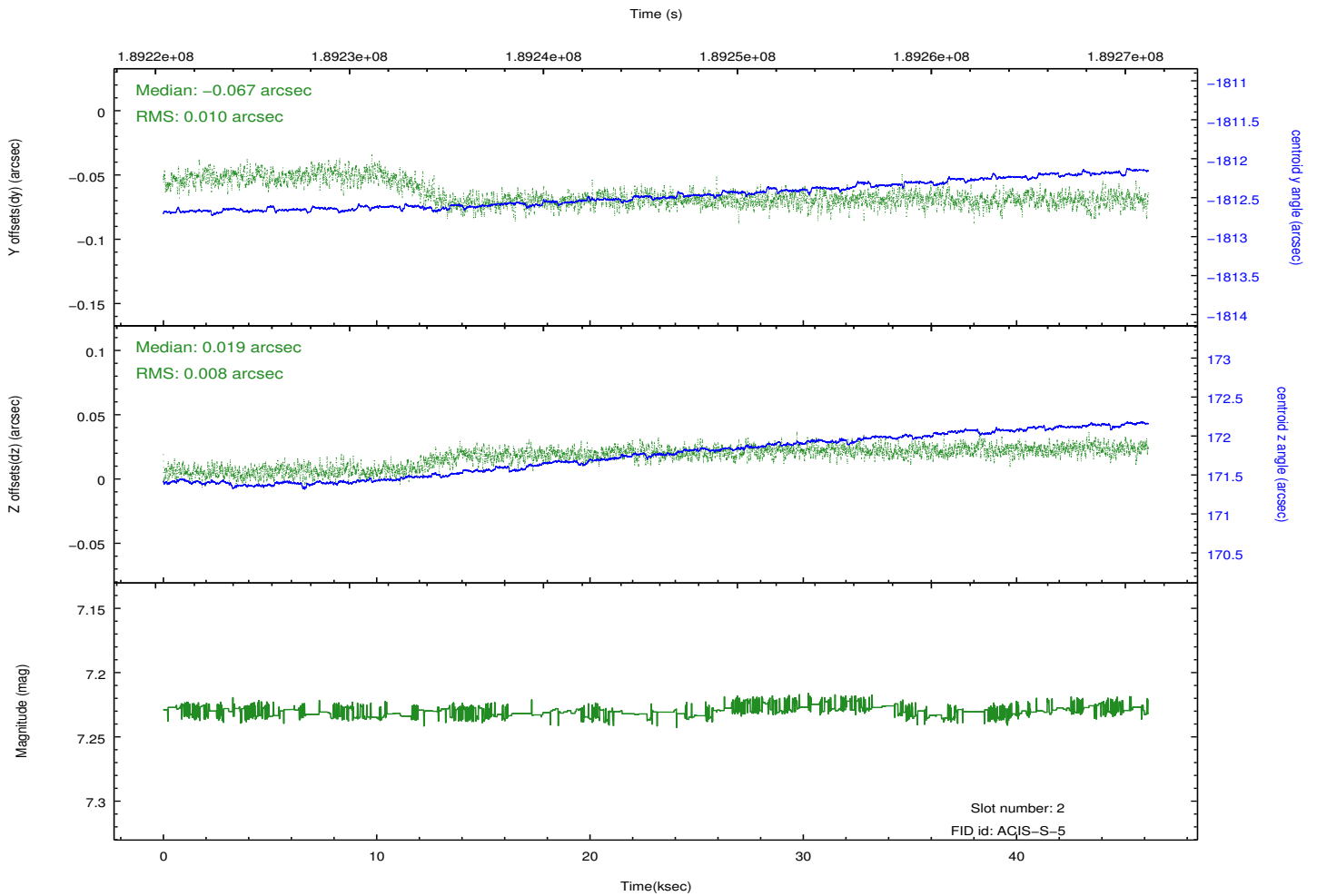
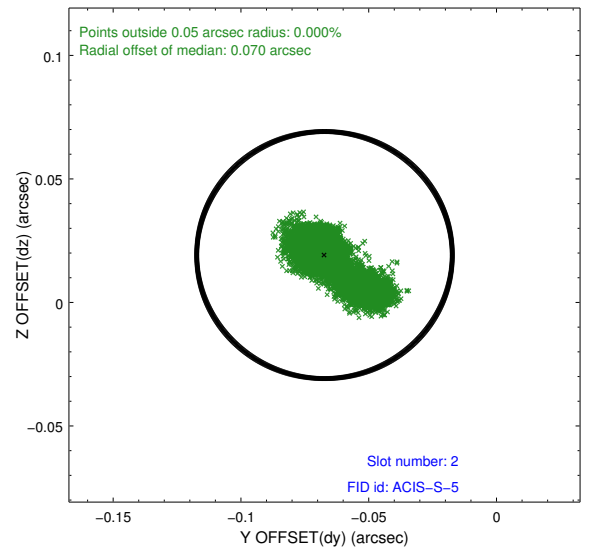
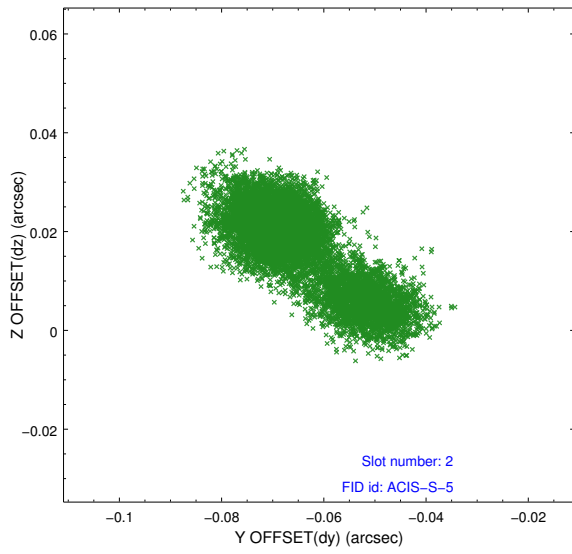
2.5.1 Slot 0



2.5.2 Slot 1



2.5.3 Slot 2



A Summary

A.1 Status

V&V Scientist	Jen Lauer
V&V Date (YYYY-MM-DD)	2012.12.04
V&V Edition	1
V&V Disposition and Status	OK
V&V Charge Time	46.172

A.2 Comments

On day 356 at about 00:30, the OBA heater stuck in the 'on' position. This situation affected obsid 4901 and all subsequent observations to this point. The result of this anomaly could be a displacement of the target on the chip in the z direction. The displacement will be small because everything is still within spec, but the target may be spatially displaced, have a different point spread function, or trail across the chip.