

V&V Reference Report

L2 ASCDS Version : 8.4.5

Observation 4567 - L2 Version 3
Chandra X-Ray Center

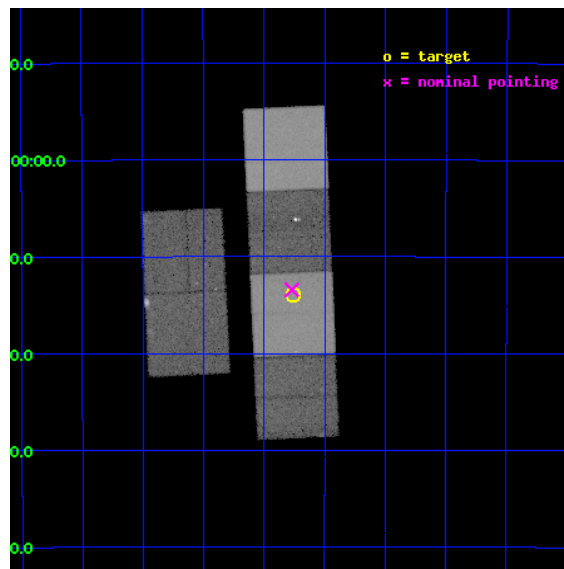
L2 Processing Date : Nov 14 2012

Contents

| | | |
|----------|-------------------------------|-----------|
| 1 | Front | 2 |
| 2 | OBI | 3 |
| 2.1 | OBI | 3 |
| 2.1.1 | Images | 3 |
| 2.1.2 | Bias | 3 |
| 2.1.3 | Parameters | 4 |
| 2.1.4 | Events | 4 |
| 2.2 | Compared Parameters | 5 |
| 2.3 | Aspect | 6 |
| 2.4 | Star Slots | 9 |
| 2.4.1 | Slot 3 | 9 |
| 2.4.2 | Slot 4 | 10 |
| 2.4.3 | Slot 5 | 11 |
| 2.4.4 | Slot 6 | 12 |
| 2.4.5 | Slot 7 | 13 |
| 2.5 | FID Slots | 14 |
| 2.5.1 | Slot 0 | 14 |
| 2.5.2 | Slot 1 | 15 |
| 2.5.3 | Slot 2 | 16 |
| A | Summary | 17 |
| A.1 | Status | 17 |
| A.2 | Comments | 17 |

1 Front

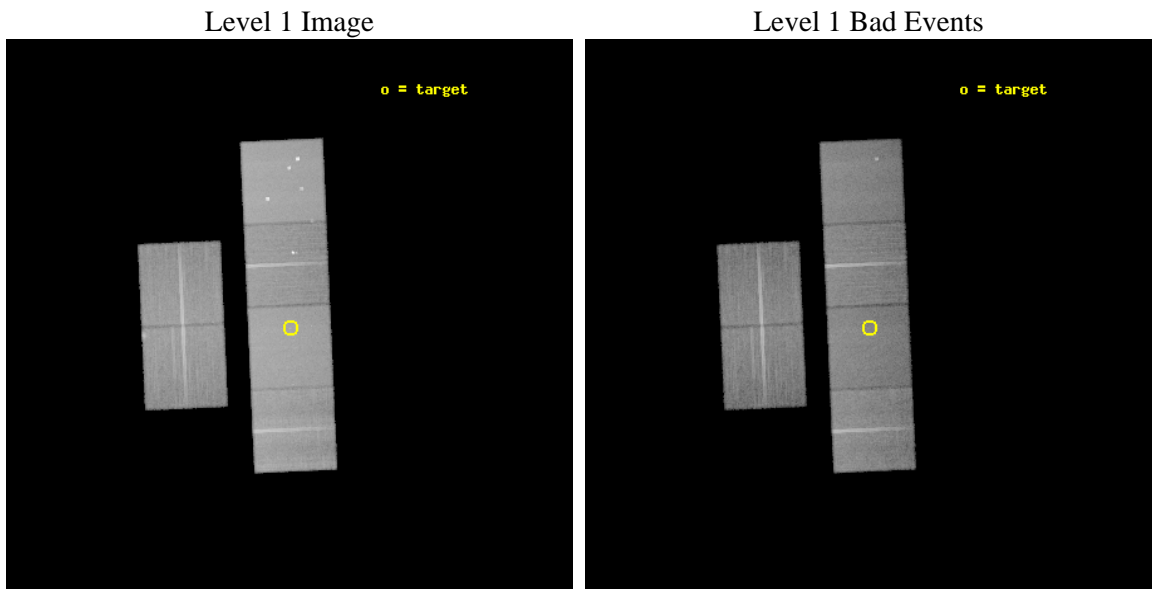
| | | |
|----------|----------------------------|--|
| seq_num | 400350 | Sequence number |
| obs_id | 4567 | Observation id |
| title | X-Ray Jets in Microquasars | Proposal title |
| observer | Prof. Stephane CORBEL | Principal investigator |
| object | H1743-322 | Source name |
| dtcycle | 0 | |
| cycle | P | events from which exps? Prim/Second/Both |
| ra_targ | 266.565 | Observer's specified target RA [deg] |
| dec_targ | -32.2333 | Observer's specified target Dec [deg] |
| ra_nom | 266.56751419778 | Nominal RA [deg] |
| dec_nom | -32.22383760132 | Nominal Dec [deg] |
| roll_nom | 87.457971555702 | Nominal Roll [deg] |
| revision | 3 | Processing version of data |
| ontime | 40550.399848938 | Sum of GTIs [s] |
| livetime | 40036.926269531 | Livetime [s] |
| ontime2 | 40547.158878654 | Sum of GTIs [s] |
| ontime3 | 40540.676898271 | Sum of GTIs [s] |
| ontime5 | 40550.399848938 | Sum of GTIs [s] |
| ontime6 | 40550.399848938 | Sum of GTIs [s] |
| ontime7 | 40550.399848938 | Sum of GTIs [s] |
| ontime8 | 40550.399848938 | Sum of GTIs [s] |
| l2events | 462942 | Number of level 2 events |



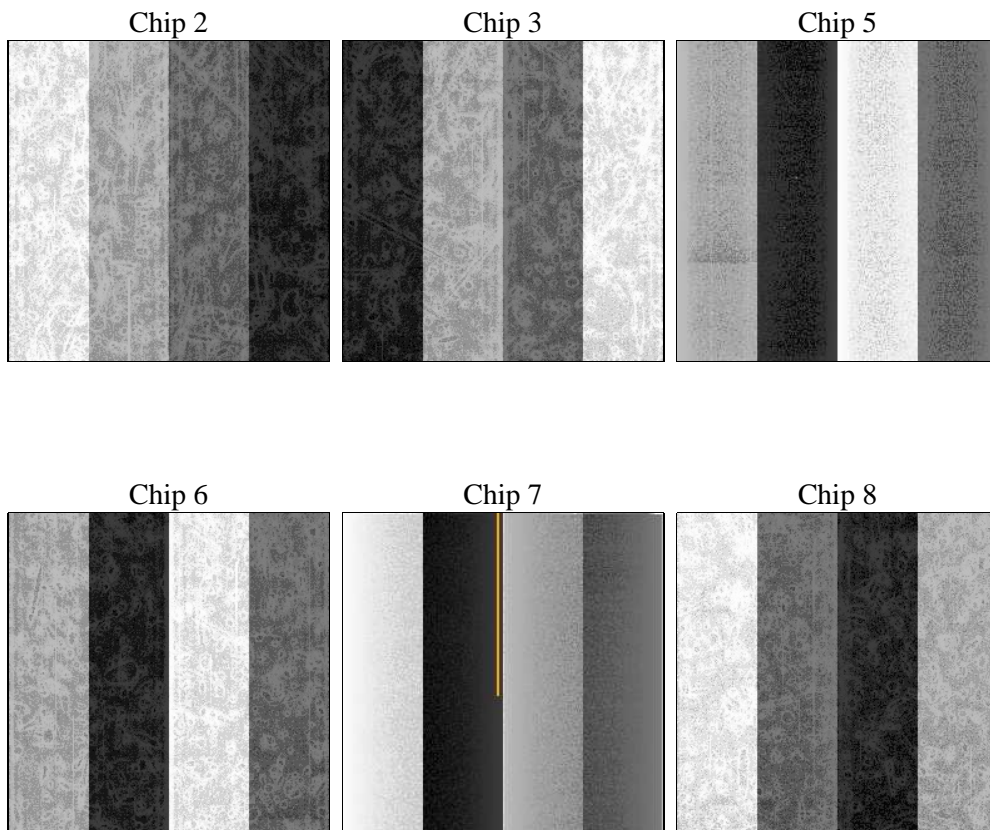
2 OBI

2.1 OBI

2.1.1 Images



2.1.2 Bias



2.1.3 Parameters

| | | | | | |
|----------|---------------------|--------------------------------|----------------|-----------------|---|
| obi_num | 0 | Obi number | sched_exp_time | 40400.000000 | [s] Scheduled observation exposure time |
| ascdsver | 8.4.5 | Processing system revision | ontime | 40550.399848938 | Sum of GTIs [s] |
| caldbver | 4.5.2 | | ontime2 | 40547.158878654 | Sum of GTIs [s] |
| date | 2012-11-14T02:18:36 | Date and time of file creation | ontime3 | 40540.676898271 | Sum of GTIs [s] |
| revision | 3 | Processing version of data | ontime5 | 40550.399848938 | Sum of GTIs [s] |
| | | | ontime6 | 40550.399848938 | Sum of GTIs [s] |
| | | | ontime7 | 40550.399848938 | Sum of GTIs [s] |
| | | | ontime8 | 40550.399848938 | Sum of GTIs [s] |
| | | | l1events | 2008922 | Number of level 1 events |

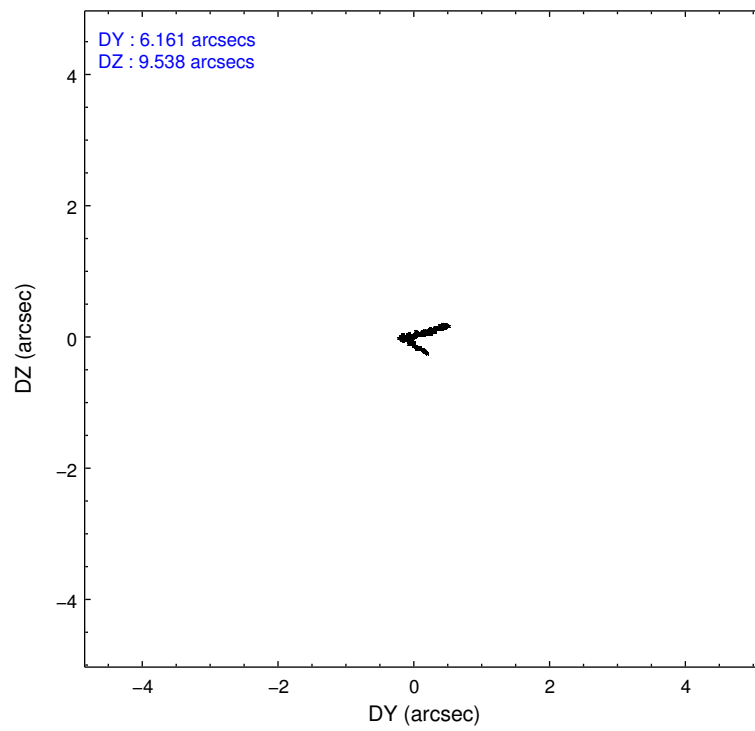
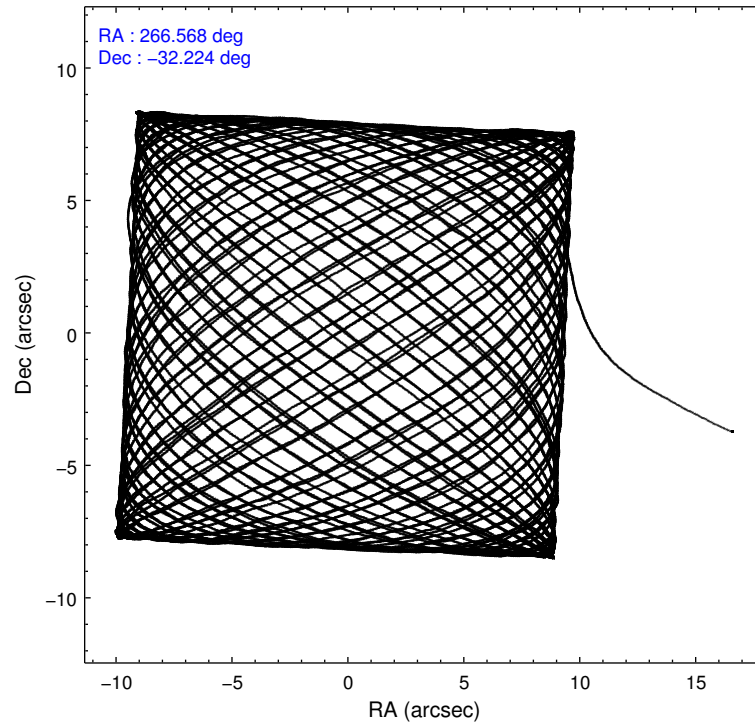
2.1.4 Events

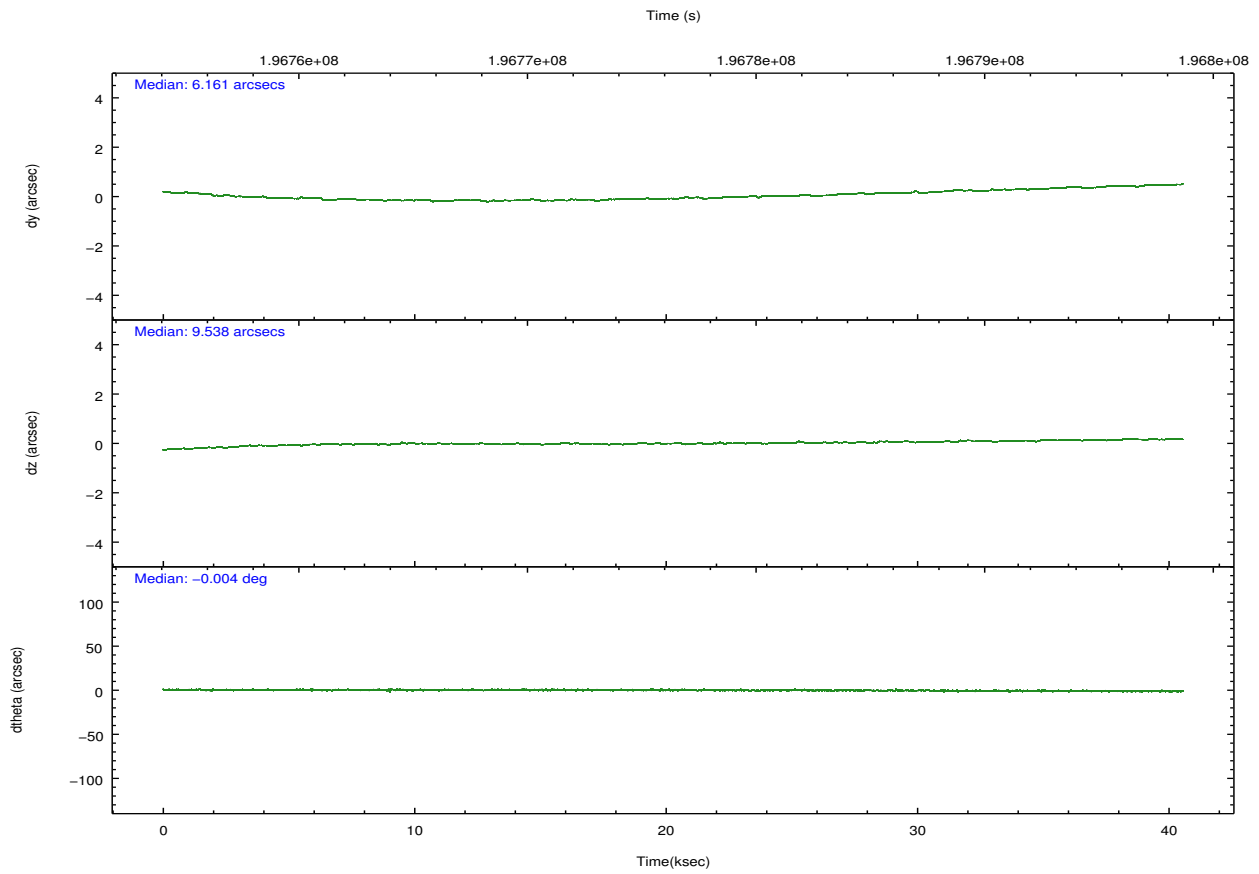
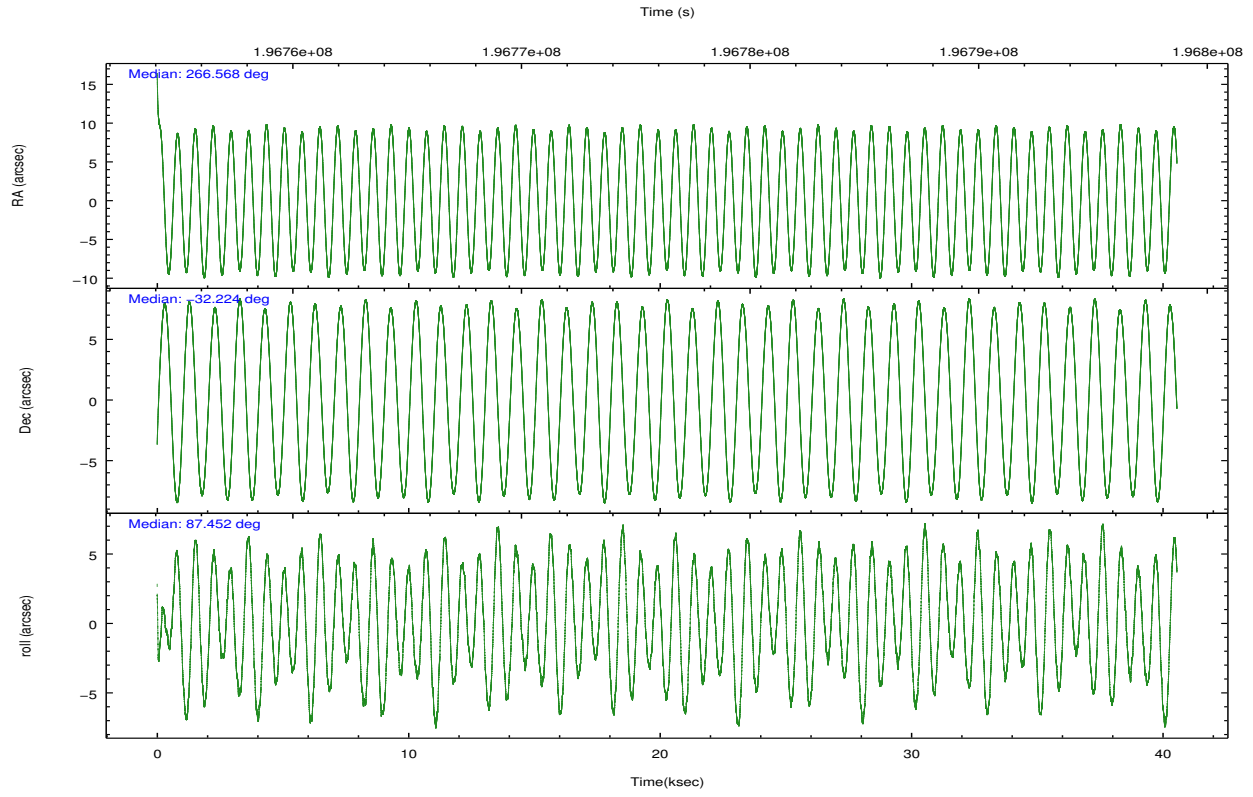
| | ccd 2 | ccd 3 | ccd 5 | ccd 6 | ccd 7 | ccd 8 | | ccd 2 | ccd 3 | ccd 5 | ccd 6 | ccd 7 | ccd 8 |
|-----------------|--------|--------|--------|--------|--------|--------|----------------|--------|--------|--------|--------|--------|--------|
| level 1 events | 281248 | 276741 | 426852 | 287869 | 380924 | 355288 | grade 0 events | 16048 | 16942 | 27838 | 19431 | 14213 | 25591 |
| rejected events | 246143 | 240983 | 226869 | 247307 | 223620 | 277550 | | 5% | 6% | 6% | 6% | 3% | 7% |
| rejected % | 87% | 87% | 53% | 85% | 58% | 78% | grade 1 events | 177 | 169 | 1232 | 245 | 390 | 225 |
| | | | | | | | | 0% | 0% | 0% | 0% | 0% | 0% |
| | | | | | | | grade 2 events | 6957 | 6529 | 57214 | 7546 | 31479 | 16695 |
| | | | | | | | | 2% | 2% | 13% | 2% | 8% | 4% |
| | | | | | | | grade 3 events | 3246 | 3275 | 7632 | 3459 | 14023 | 8087 |
| | | | | | | | | 1% | 1% | 1% | 1% | 3% | 2% |
| | | | | | | | grade 4 events | 3214 | 3319 | 7239 | 3310 | 13861 | 7611 |
| | | | | | | | | 1% | 1% | 1% | 1% | 3% | 2% |
| | | | | | | | grade 5 events | 11220 | 12290 | 30164 | 12889 | 36325 | 16735 |
| | | | | | | | | 3% | 4% | 7% | 4% | 9% | 4% |
| | | | | | | | grade 6 events | 5651 | 5707 | 100101 | 6827 | 83764 | 19764 |
| | | | | | | | | 2% | 2% | 23% | 2% | 21% | 5% |
| | | | | | | | grade 7 events | 234735 | 228510 | 195432 | 234162 | 186869 | 260580 |
| | | | | | | | | 83% | 82% | 45% | 81% | 49% | 73% |

2.2 Compared Parameters

| Parameter | Planned | Actual | Parameter | Planned | Actual |
|-----------------------------------|---------------------|----------------------|---------------------------------------|-----------|---------|
| Instrument | ACIS | ACIS | Obspar format version number | 7 | 7 |
| Detector | ACIS-235678 | ACIS-235678 | Obspar file type | PREDICTED | ACTUAL |
| Grating | NONE | NONE | Obspar update status | NONE | UPDATED |
| Data mode | FAINT | FAINT | Number of optional ACIS chips dropped | 0 | 0 |
| Observation mode | POINTING | POINTING | On-chip summing requested | N | N |
| [deg] Pointing RA | 266.582731 | 266.5675141977773 | Subarray requested | NONE | NONE |
| [deg] Pointing Dec | -32.247862 | -32.22383760131967 | Alternating exposures requested | N | N |
| [deg] Pointing Roll | 87.309466 | 87.45797155570175 | [s] Primary exposure time | 0.000000 | 3.2 |
| [s] Window start time (MET) | 195955264.184000 | 195955264.184000 | | | |
| [s] Window stop time (MET) | 197078464.184000 | 197078464.184000 | | | |
| [mm] SIM focus pos | -0.684267 | -0.6828225247311905 | | | |
| [mm] SIM defocus | 0 | 0.001444936568705701 | | | |
| [mm] SIM translation stage pos | -190.132523 | -190.1400660498719 | | | |
| [mm] SIM translation stage offset | 0 | 0.00754346686406393 | | | |
| [s] Observation start time (MET) | 196756249.184000 | 196755189.34889 | | | |
| Observation start date | 2004-03-27T06:29:45 | 2004-03-27T06:13:09 | | | |
| [s] Observation end time (MET) | 196796649.184000 | 196797309.16324 | | | |
| Observation end date | 2004-03-27T17:43:05 | 2004-03-27T17:55:09 | | | |
| Read mode | TIMED | TIMED | | | |

2.3 Aspect



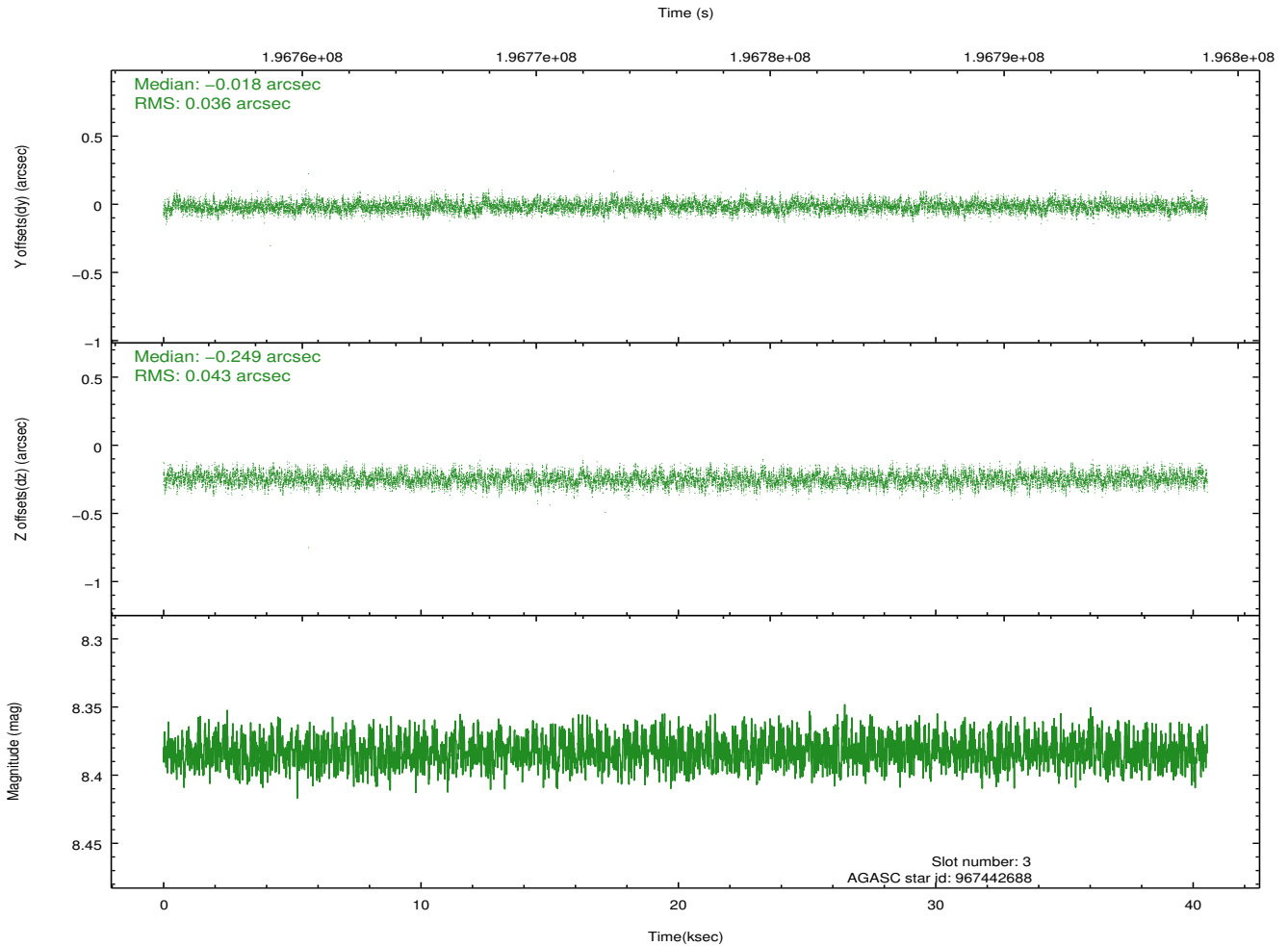
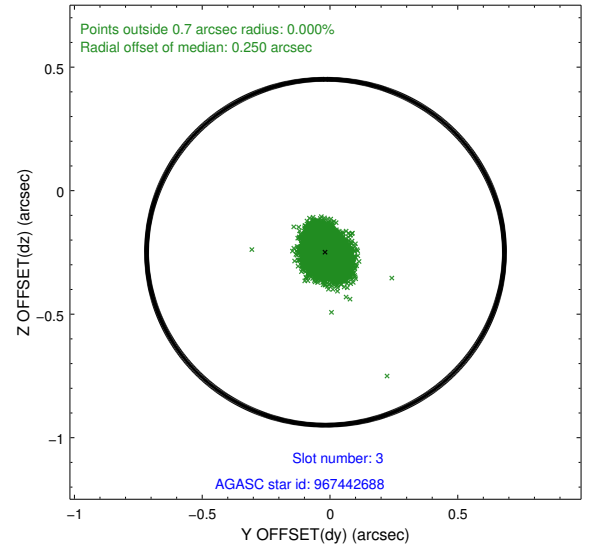
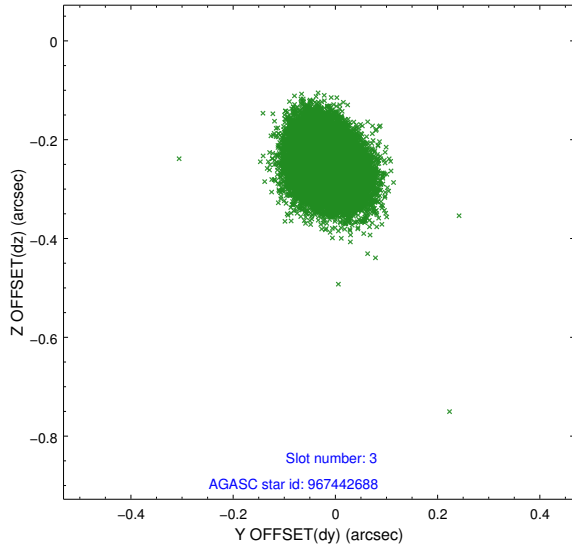


Slot Statistics

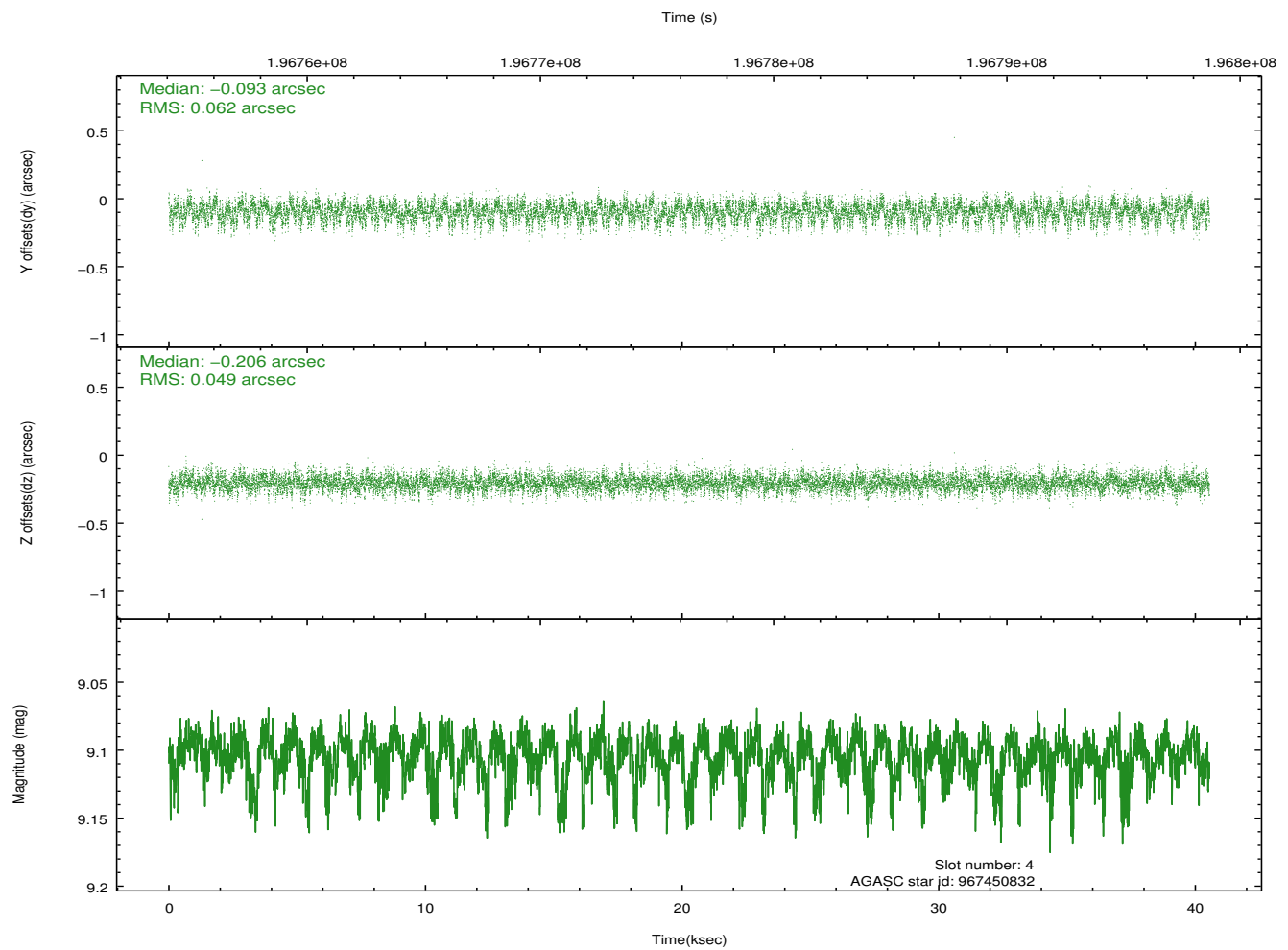
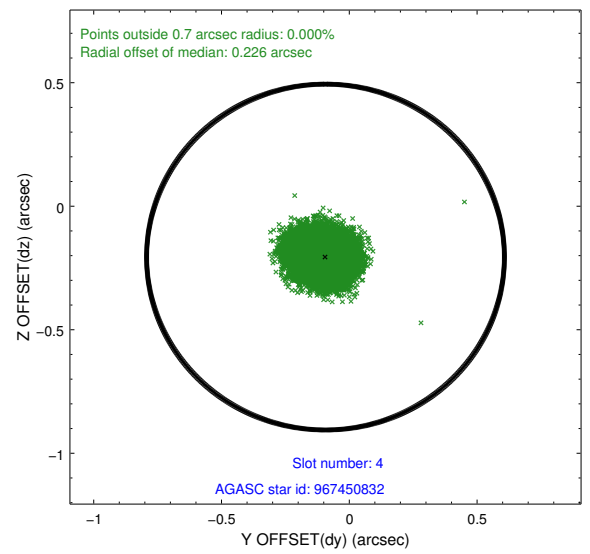
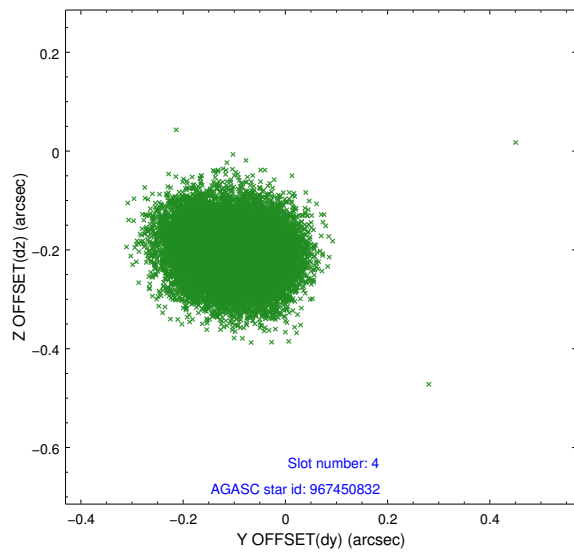
| slot | status | id | mag | n_pts | med_dy | med_dz | dr1 | dr2 | ra | dec | mean_y | mean_z |
|------|--------|-----------|------|-------|--------|--------|-------|-------|------------|------------|----------|----------|
| 0 | FID | ACIS-S-2 | 7.10 | 9891 | -0.059 | -0.037 | 0.007 | 0.012 | 0.000000 | 0.000000 | -758.99 | -1730.82 |
| 1 | FID | ACIS-S-4 | 7.20 | 9891 | 0.092 | 0.038 | 0.006 | 0.010 | 0.000000 | 0.000000 | 2154.42 | 177.74 |
| 2 | FID | ACIS-S-5 | 7.23 | 9891 | -0.064 | 0.007 | 0.006 | 0.011 | 0.000000 | 0.000000 | -1811.83 | 171.37 |
| 3 | GUIDE | 967442688 | 8.38 | 19778 | -0.018 | -0.249 | 0.059 | 0.097 | 266.096113 | -32.373763 | -525.52 | 1456.39 |
| 4 | GUIDE | 967450832 | 9.10 | 19732 | -0.093 | -0.206 | 0.084 | 0.136 | 266.078096 | -31.879979 | 1246.83 | 1603.18 |
| 5 | GUIDE | 967446352 | 7.75 | 19779 | 0.098 | -0.013 | 0.063 | 0.101 | 267.069988 | -32.671157 | -1455.92 | -1546.45 |
| 6 | GUIDE | 967447616 | 9.30 | 19770 | 0.137 | 0.254 | 0.090 | 0.144 | 267.260141 | -32.889782 | -2218.34 | -2154.27 |
| 7 | GUIDE | 967451816 | 9.26 | 19777 | -0.123 | 0.213 | 0.085 | 0.138 | 267.266669 | -31.901374 | 1337.48 | -2029.38 |

2.4 Star Slots

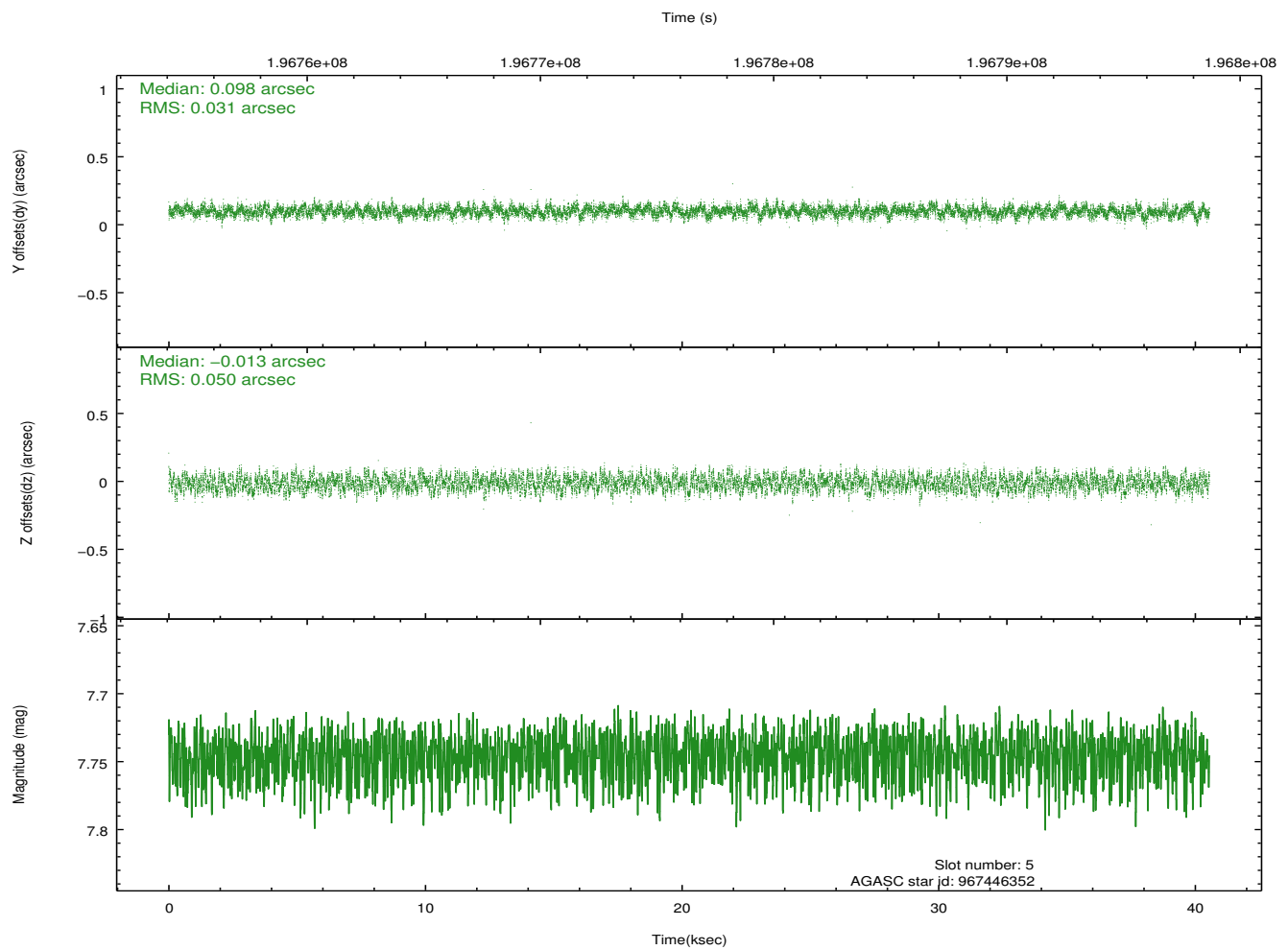
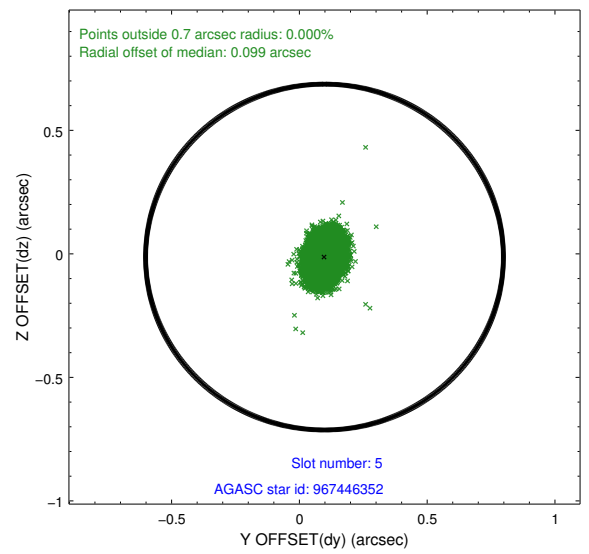
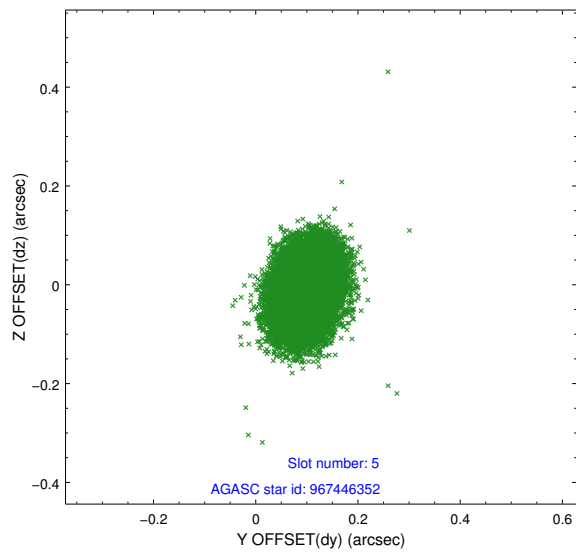
2.4.1 Slot 3



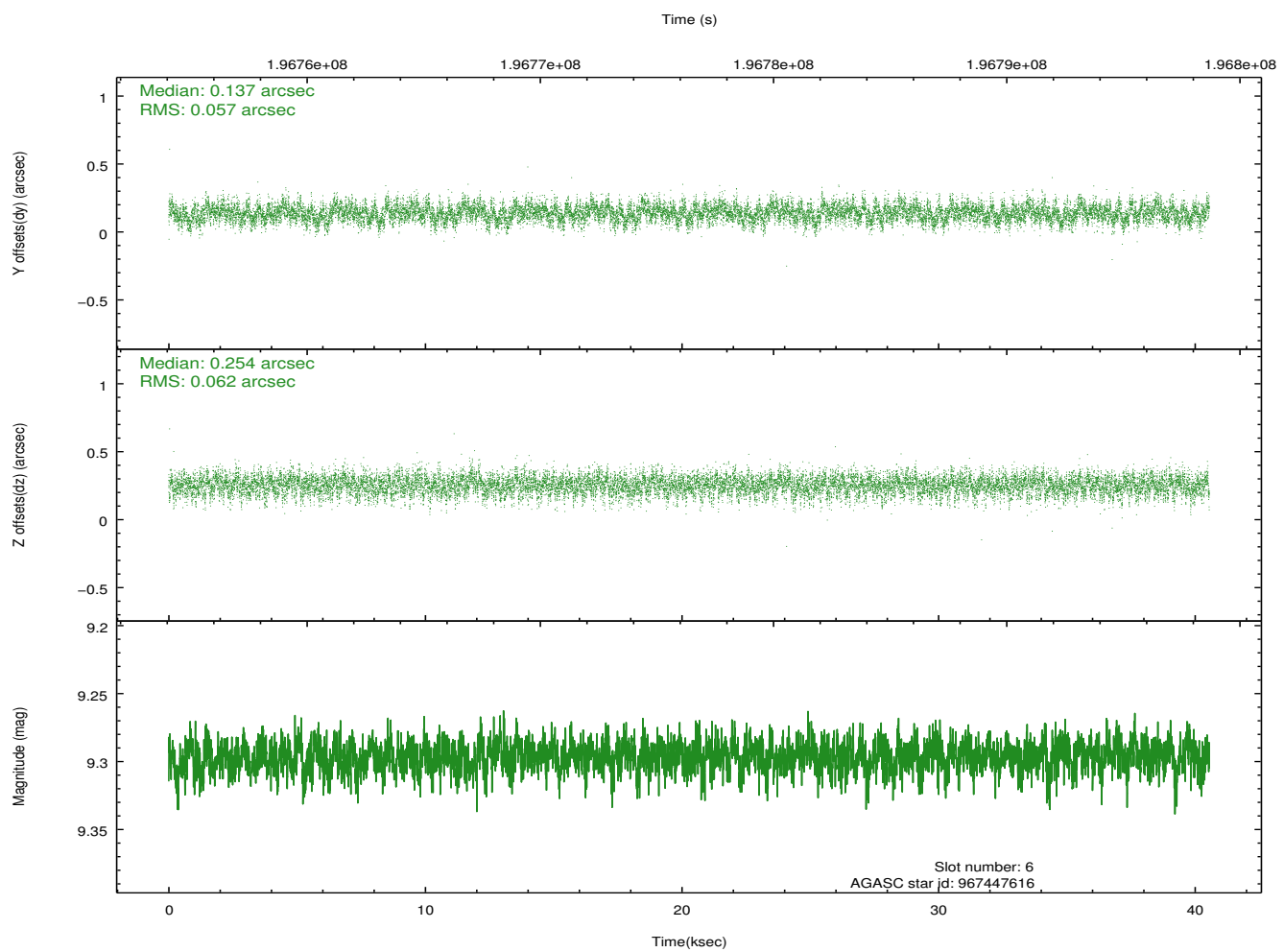
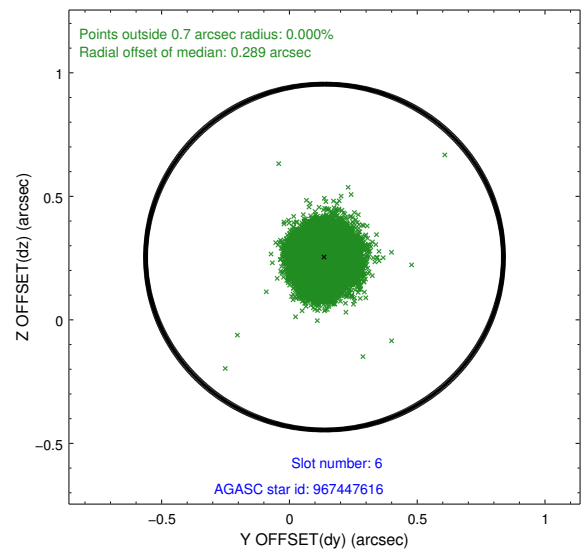
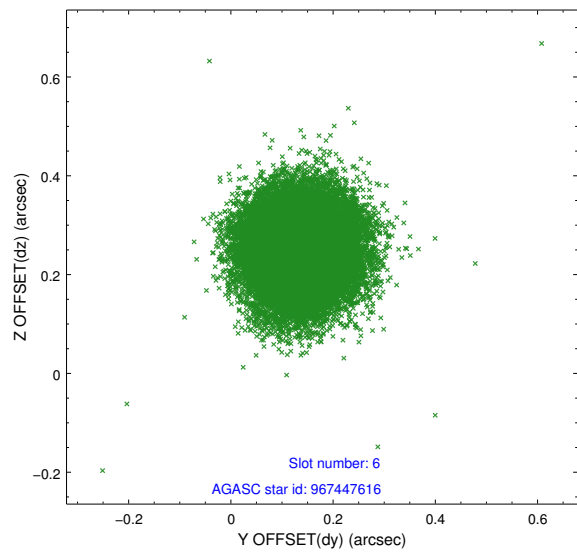
2.4.2 Slot 4



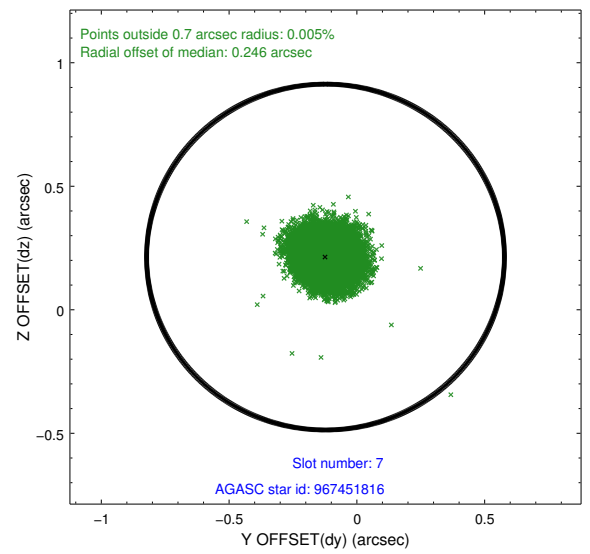
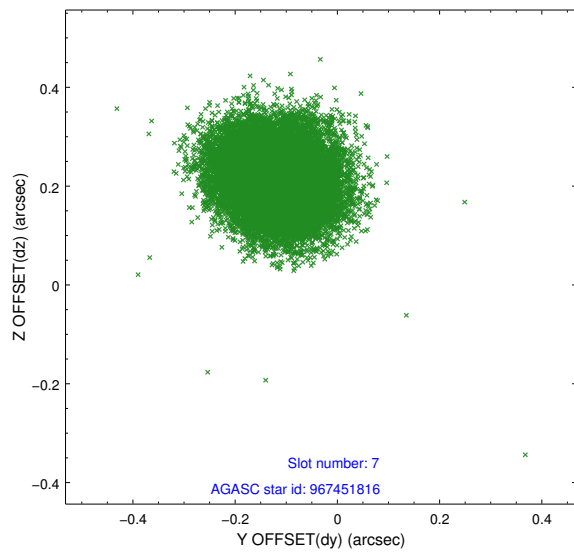
2.4.3 Slot 5



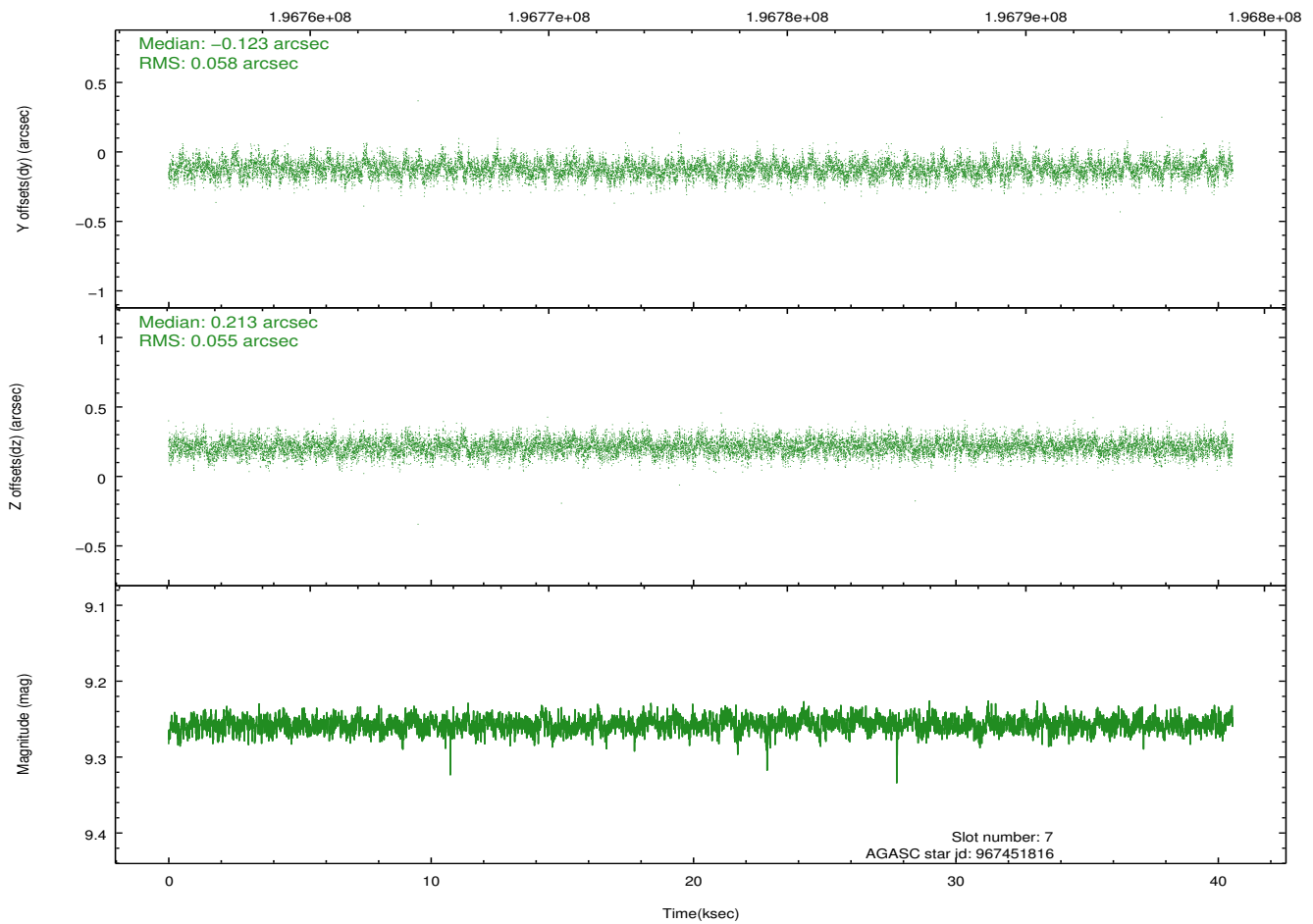
2.4.4 Slot 6



2.4.5 Slot 7

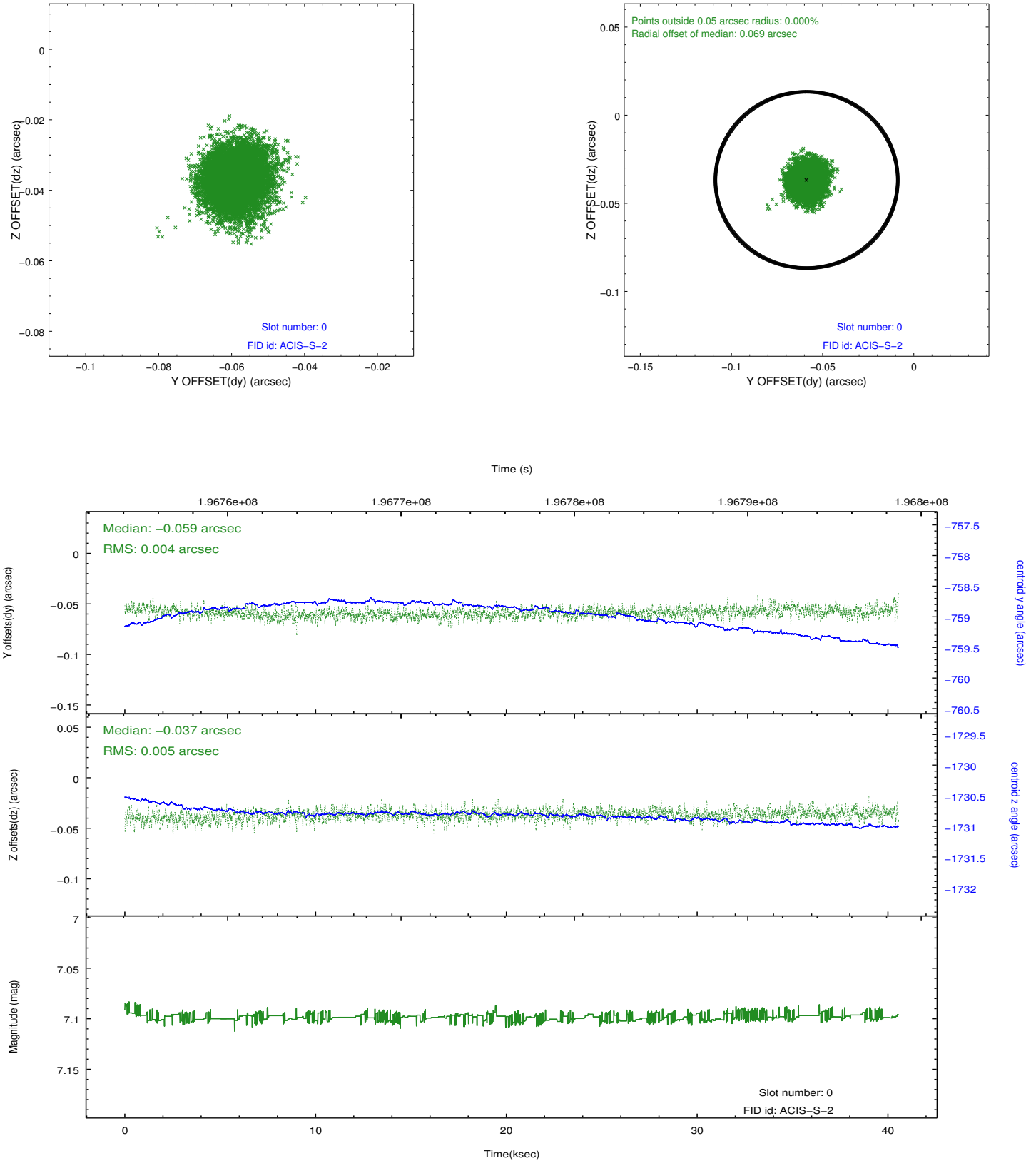


Time (s)

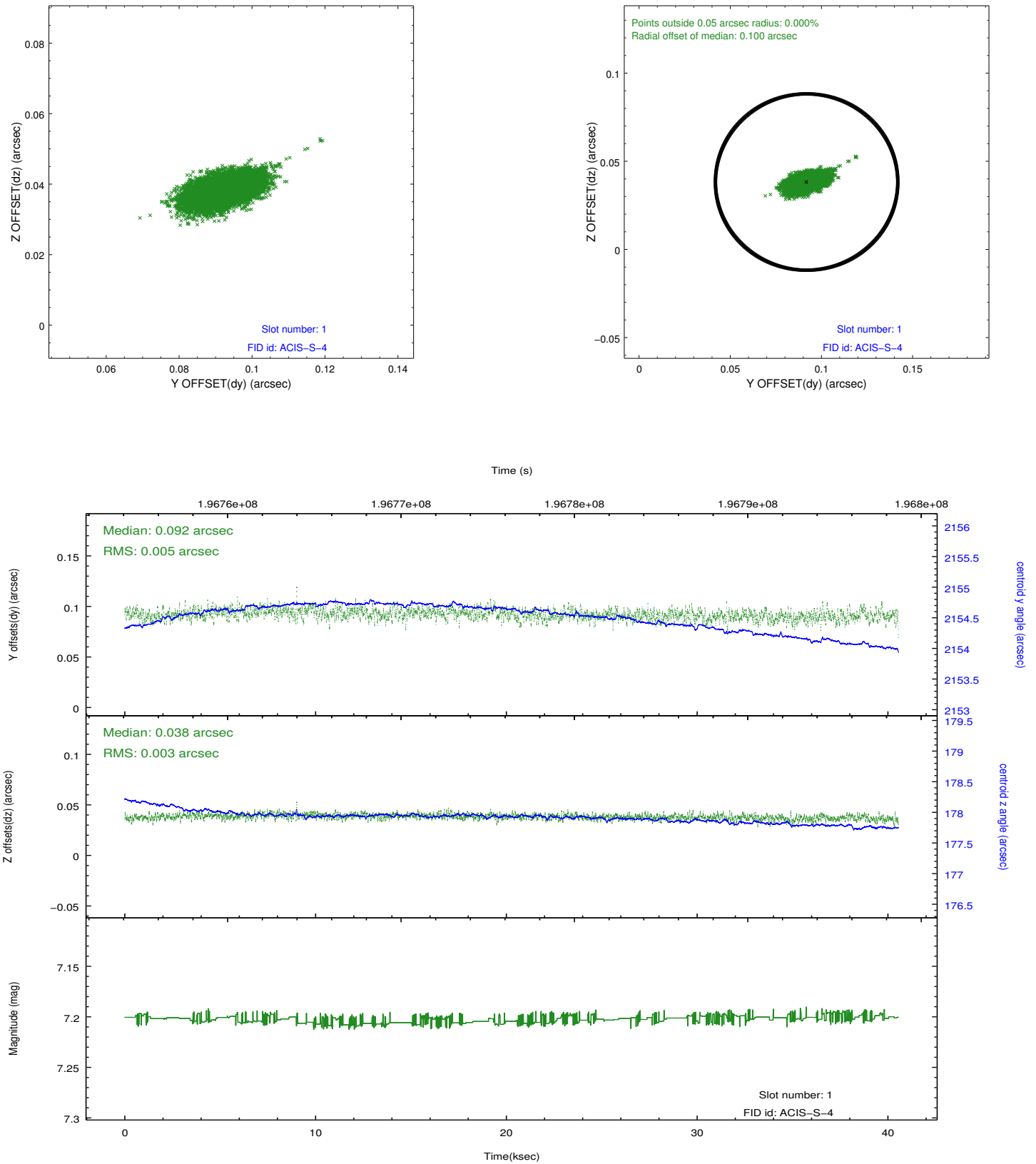


2.5 FID Slots

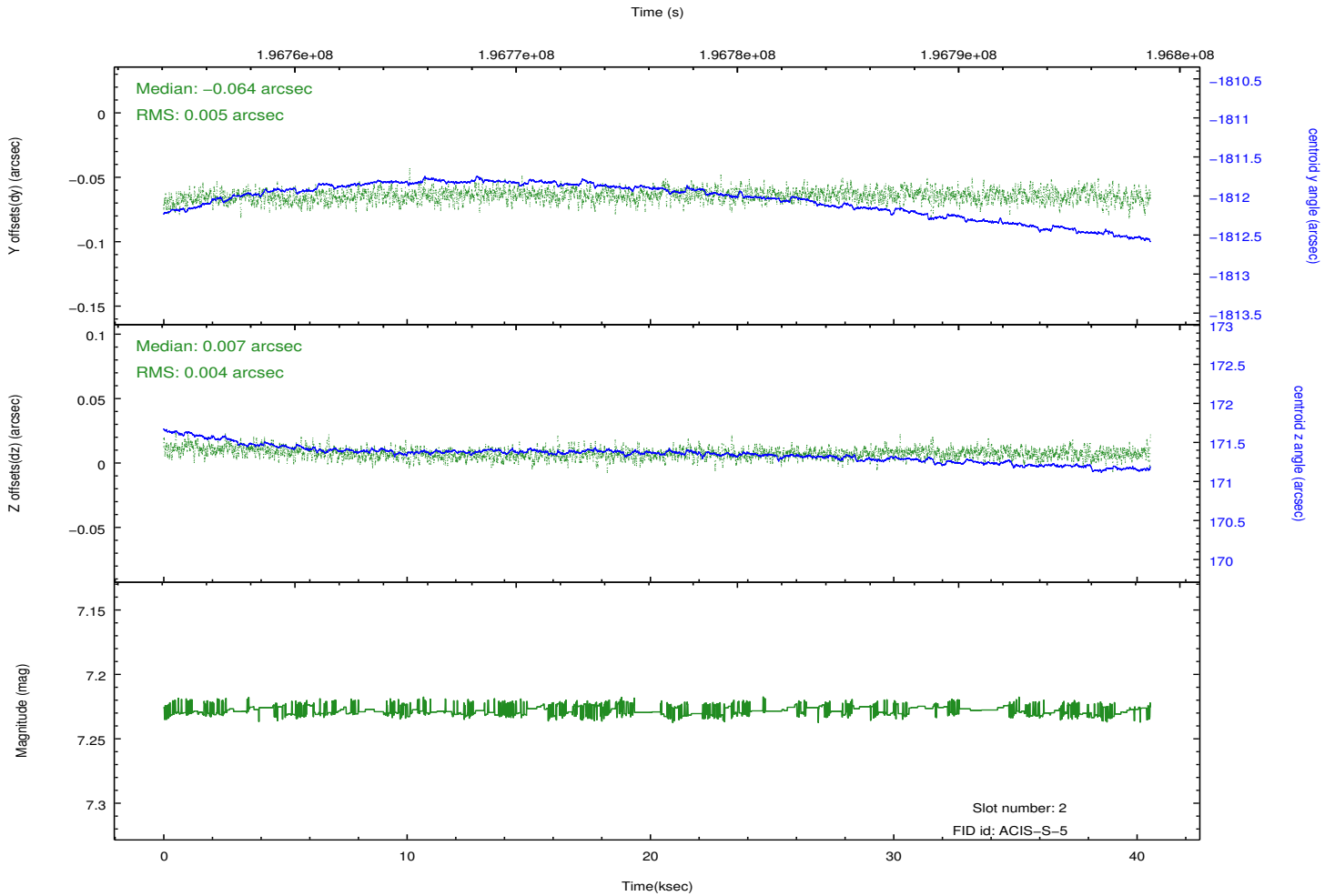
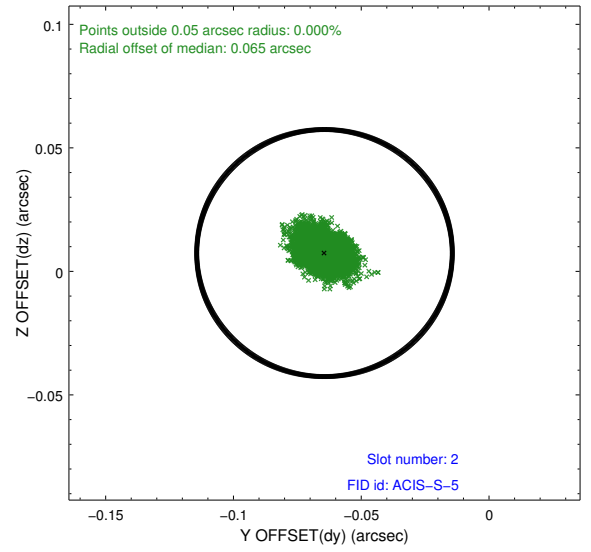
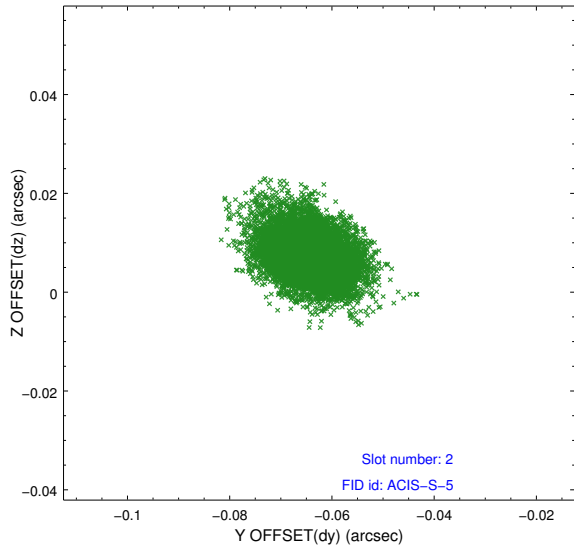
2.5.1 Slot 0



2.5.2 Slot 1



2.5.3 Slot 2



A Summary

A.1 Status

| | |
|----------------------------|------------|
| V&V Scientist | Jen Lauer |
| V&V Date (YYYY-MM-DD) | 2012.12.14 |
| V&V Edition | 1 |
| V&V Disposition and Status | OK |
| V&V Charge Time | 40.55 |

A.2 Comments

Window constraint satisfied.