

V&V Reference Report

L2 ASCDS Version : 8.5.1

Observation 4687 - L2 Version 3
Chandra X-Ray Center

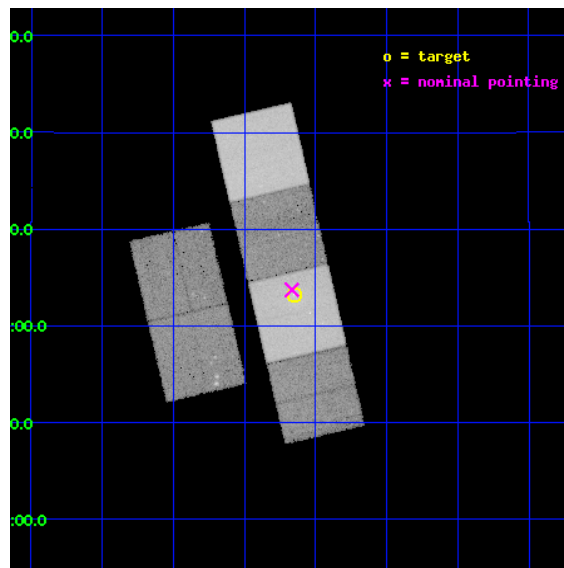
L2 Processing Date : Dec 17 2012

Contents

1	Front	2
2	OBI	3
2.1	OBI	3
2.1.1	Images	3
2.1.2	Bias	3
2.1.3	Parameters	4
2.1.4	Events	4
2.2	Compared Parameters	5
2.3	Aspect	6
2.4	Star Slots	9
2.4.1	Slot 3	9
2.4.2	Slot 4	10
2.4.3	Slot 5	11
2.4.4	Slot 6	12
2.4.5	Slot 7	13
2.5	FID Slots	14
2.5.1	Slot 0	14
2.5.2	Slot 1	15
2.5.3	Slot 2	16
A	Summary	17
A.1	Status	17
A.2	Comments	17

1 Front

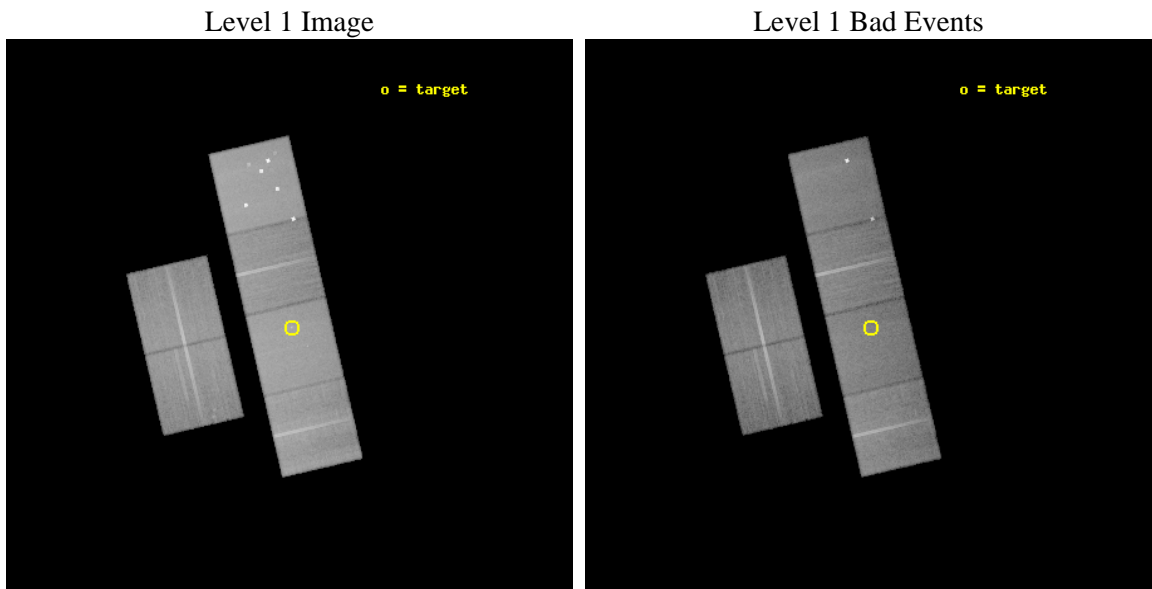
seq_num	600342	Sequence number
obs_id	4687	Observation id
title	X-ray Census of Supermassive Black Holes: I. New Observations	Prop
observer	Dr. Michael Loewenstein	Principal investigator
object	NGC 4342	Source name
dtcycle	0	
cycle	P	events from which exps? Prim/Second/Both
ra_targ	185.912917	Observer's specified target RA [deg]
dec_targ	7.053889	Observer's specified target Dec [deg]
ra_nom	185.91664036465	Nominal RA [deg]
dec_nom	7.0622979747519	Nominal Dec [deg]
roll_nom	76.922577629587	Nominal Roll [deg]
revision	3	Processing version of data
ontime	38751.999855638	Sum of GTIs [s]
livetime	38261.298699813	Livetime [s]
ontime2	38748.758865356	Sum of GTIs [s]
ontime3	38751.999855638	Sum of GTIs [s]
ontime5	38751.999855638	Sum of GTIs [s]
ontime6	38751.999855638	Sum of GTIs [s]
ontime7	38751.999855638	Sum of GTIs [s]
ontime8	38748.758865327	Sum of GTIs [s]
l2events	459280	Number of level 2 events



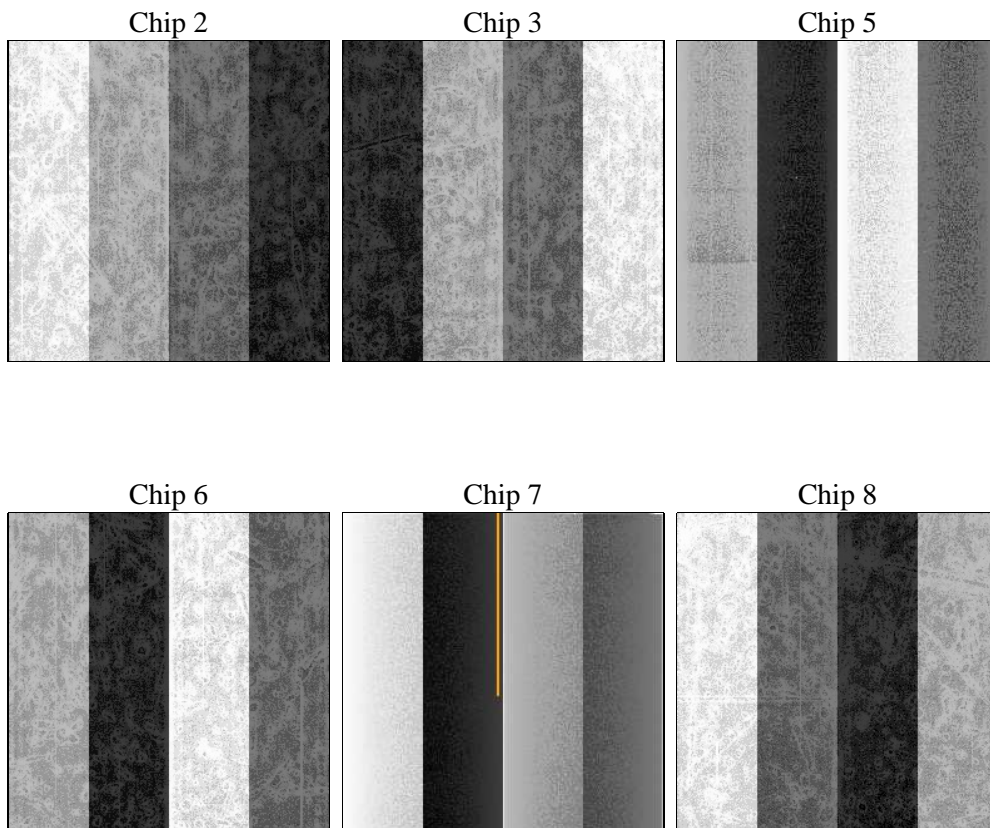
2 OBI

2.1 OBI

2.1.1 Images



2.1.2 Bias



2.1.3 Parameters

obi_num	0	Obi number	sched_exp_time	39000.000000	[s] Scheduled observation exposure time
ascdsver	8.5.1	Processing system revision	ontime	38751.999855638	Sum of GTIs [s]
caldbver	4.5.5	 	ontime2	38748.758865356	Sum of GTIs [s]
date	2012-12-17T06:37:34	Date and time of file creation	ontime3	38751.999855638	Sum of GTIs [s]
revision	3	Processing version of data	ontime5	38751.999855638	Sum of GTIs [s]
			ontime6	38751.999855638	Sum of GTIs [s]
			ontime7	38751.999855638	Sum of GTIs [s]
			ontime8	38748.758865327	Sum of GTIs [s]
			l1events	2045547	Number of level 1 events

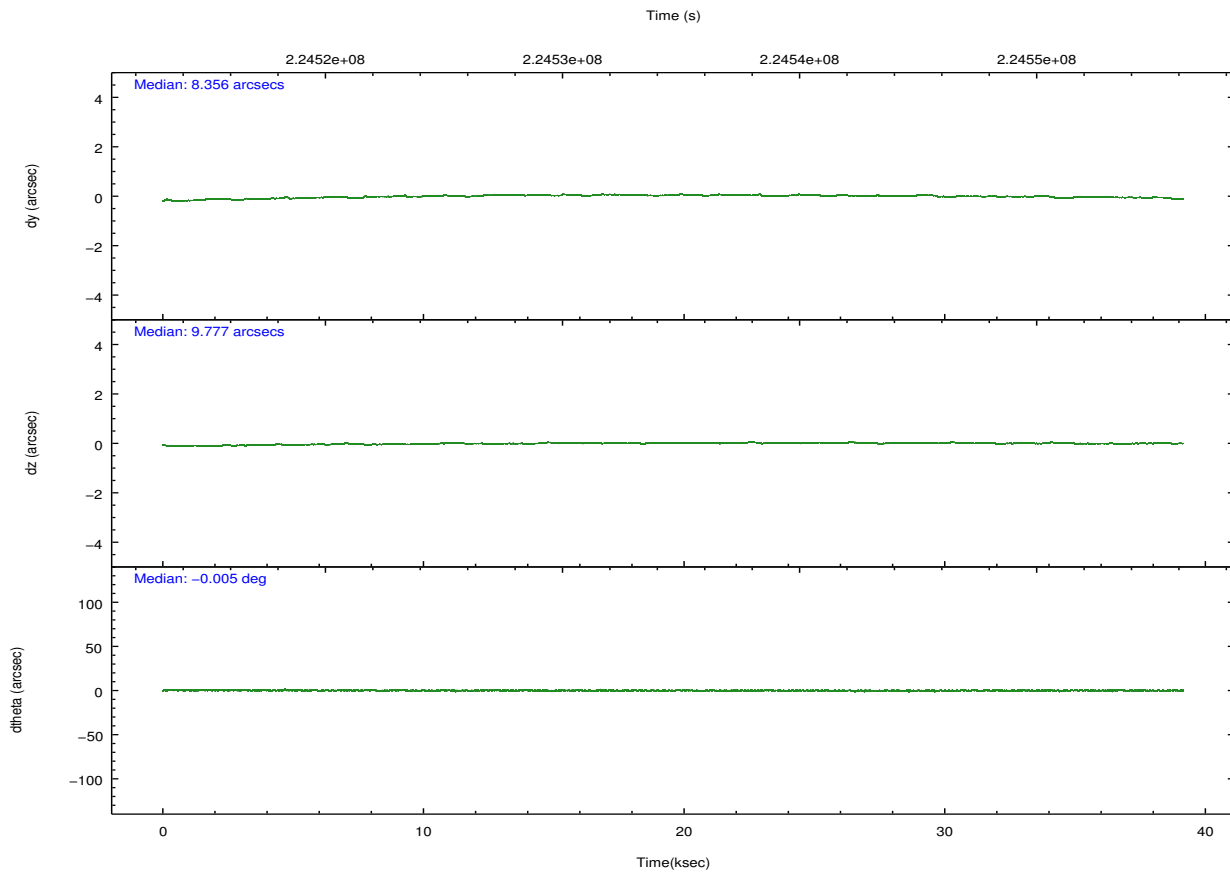
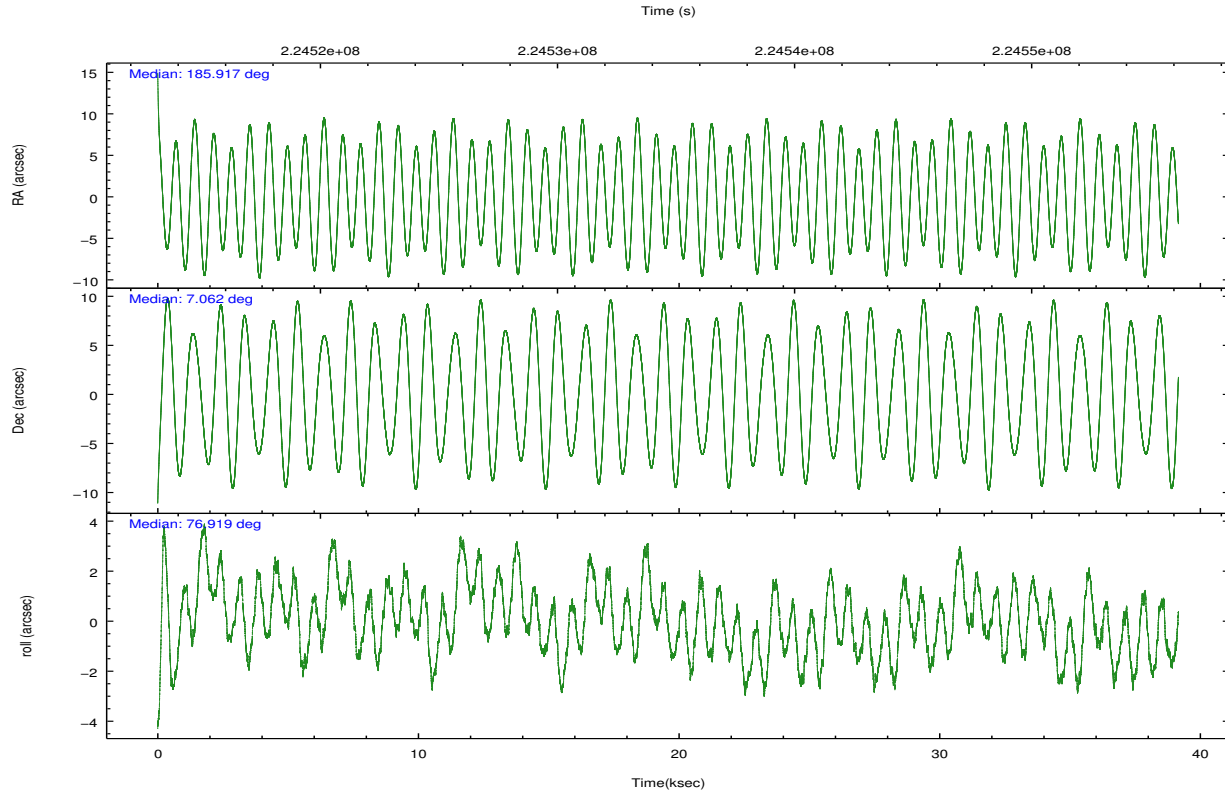
2.1.4 Events

	ccd 2	ccd 3	ccd 5	ccd 6	ccd 7	ccd 8		ccd 2	ccd 3	ccd 5	ccd 6	ccd 7	ccd 8
level 1 events	282136	271205	470982	281238	384901	355085	grade 0 events	14580	14984	48664	13929	16125	24464
rejected events	249340	237881	239736	246948	221180	279350		5%	5%	10%	4%	4%	6%
rejected %	88%	87%	50%	87%	57%	78%	grade 1 events	182	189	1042	119	386	253
								0%	0%	0%	0%	0%	0%
							grade 2 events	6722	6334	59947	7193	32730	16660
								2%	2%	12%	2%	8%	4%
							grade 3 events	3025	3190	8916	3260	14569	7864
								1%	1%	1%	1%	3%	2%
							grade 4 events	3022	3155	7519	3186	14346	7164
								1%	1%	1%	1%	3%	2%
							grade 5 events	11144	12259	34019	13173	35784	16917
								3%	4%	7%	4%	9%	4%
							grade 6 events	5454	5665	106241	6724	85988	19592
								1%	2%	22%	2%	22%	5%
							grade 7 events	238007	225429	204634	233654	184973	262171
								84%	83%	43%	83%	48%	73%

2.2 Compared Parameters

Parameter	Planned	Actual	Parameter	Planned	Actual
Instrument	ACIS	ACIS	Obspar format version number	7	7
Detector	ACIS-235678	ACIS-235678	Obspar file type	PREDICTED	ACTUAL
Grating	NONE	NONE	Obspar update status	NONE	UPDATED
Data mode	VFAINT	VFAINT	Number of optional ACIS chips dropped	0	0
Observation mode	POINTING	POINTING	On-chip summing requested	N	N
[deg] Pointing RA	185.924973	185.9166403646472	Subarray requested	NONE	NONE
[deg] Pointing Dec	7.036351	7.06229797475189	Alternating exposures requested	N	N
[deg] Pointing Roll	76.764931	76.92257762958744	[s] Primary exposure time	0.000000	3.2
[mm] SIM focus pos	-0.684267	-0.6828225247311905			
[mm] SIM defocus	0	0.001444936568705701			
[mm] SIM translation stage pos	-190.132523	-190.1400660498719			
[mm] SIM translation stage offset	0	0.00754346686406393			
[s] Observation start time (MET)	224515248.184000	224514182.67405			
Observation start date	2005-02-11T13:19:44	2005-02-11T13:03:02			
[s] Observation end time (MET)	224554248.184000	224554570.75087			
Observation end date	2005-02-12T00:09:44	2005-02-12T00:16:10			
Read mode	TIMED	TIMED			

2.3 Aspect

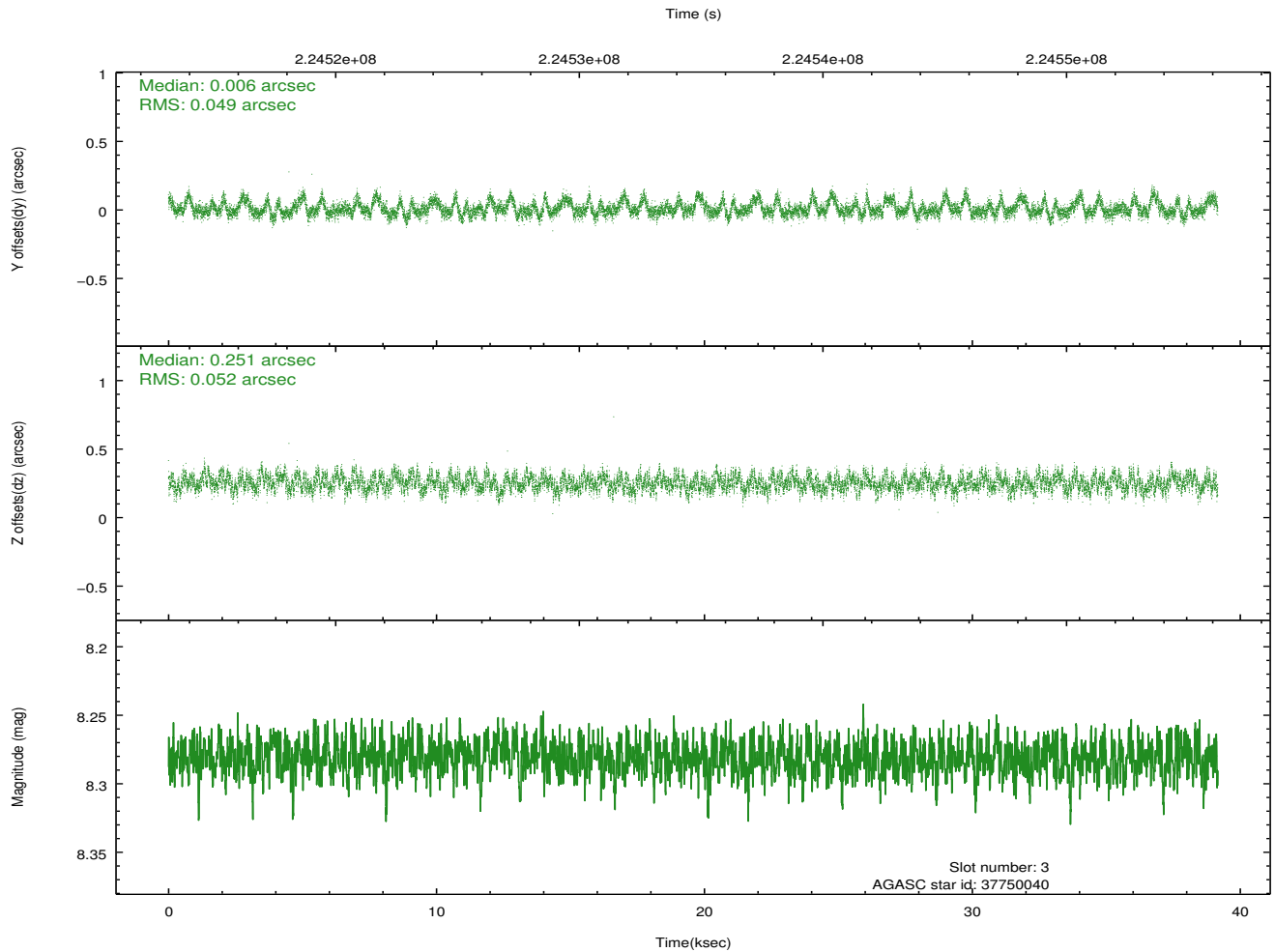
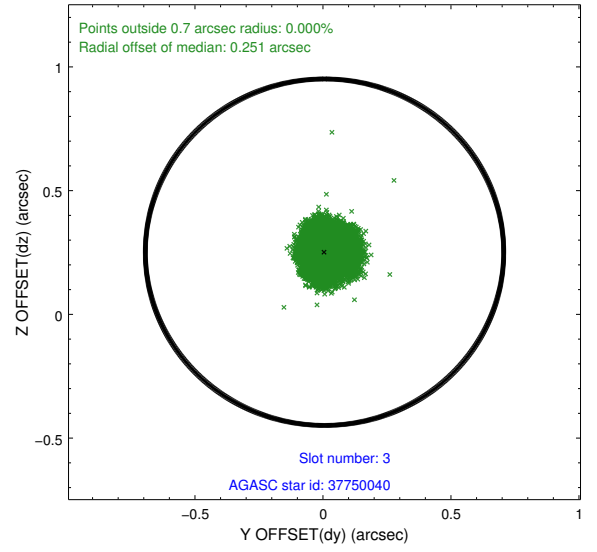
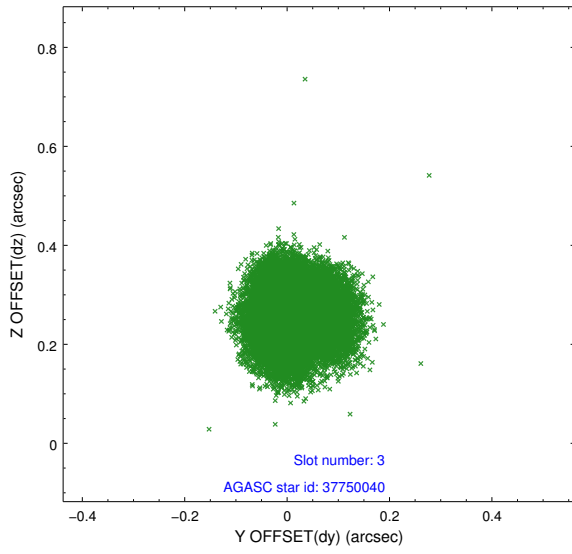


Slot Statistics

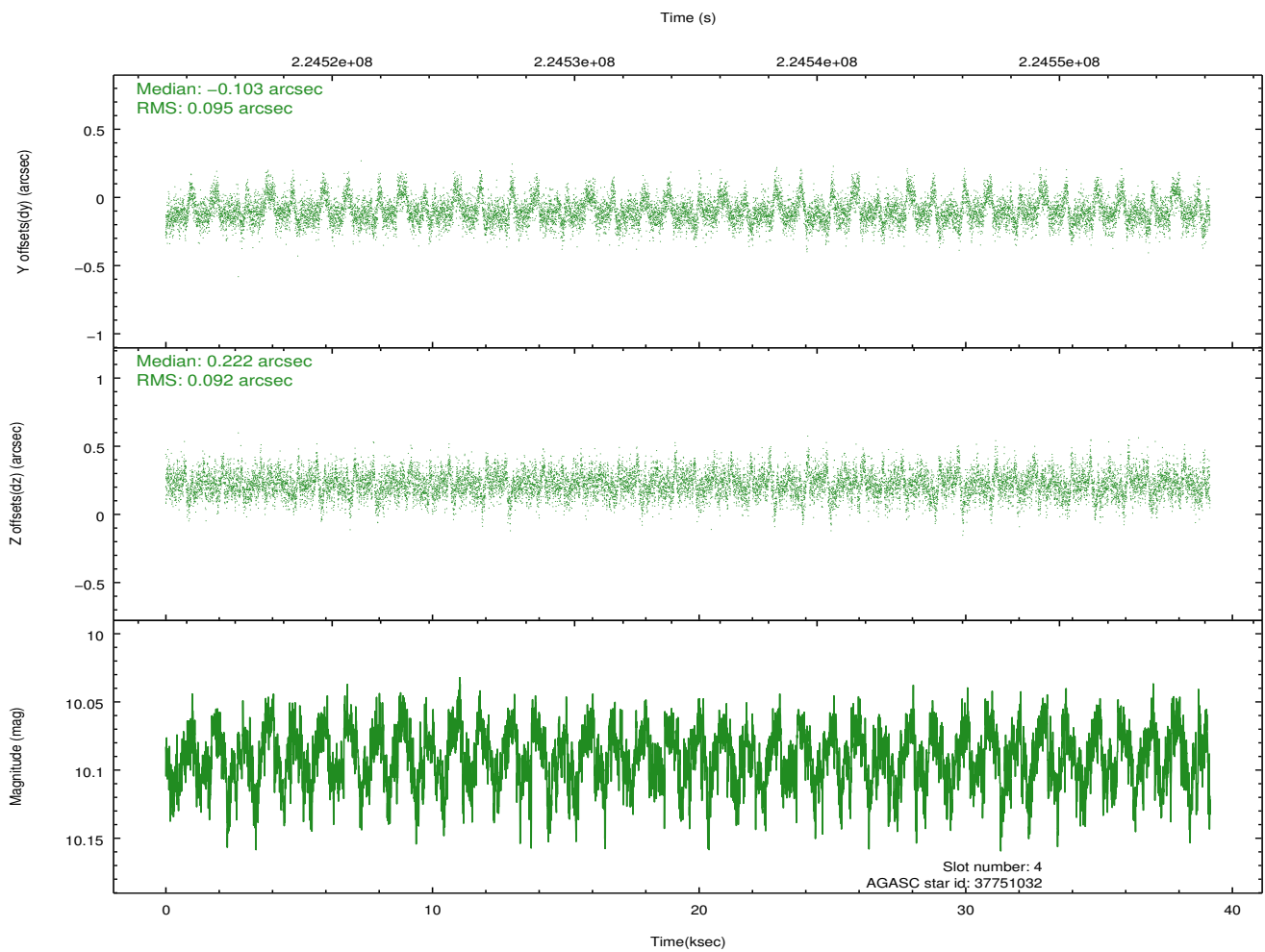
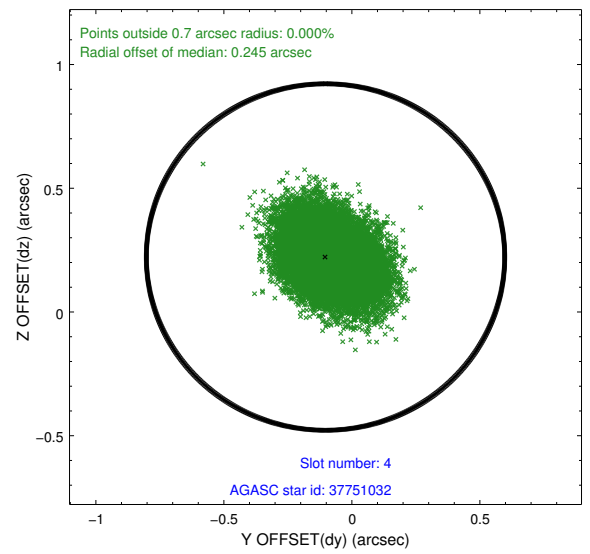
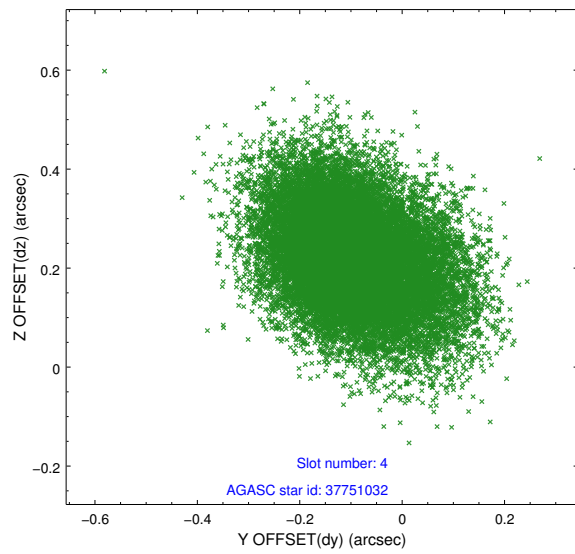
slot	status	id	mag	n_pts	med_dy	med_dz	dr1	dr2	ra	dec	mean_y	mean_z
0	FID	ACIS-S-2	7.11	9553	-0.039	-0.036	0.007	0.011	0.000000	0.000000	-761.13	-1731.06
1	FID	ACIS-S-4	7.21	9553	0.130	0.029	0.007	0.012	0.000000	0.000000	2152.26	177.53
2	FID	ACIS-S-5	7.23	9552	-0.122	0.016	0.007	0.012	0.000000	0.000000	-1814.07	171.13
3	GUIDE	37750040	8.28	19102	0.006	0.251	0.078	0.120	186.217544	6.363680	-2117.15	-1572.98
4	GUIDE	37751032	10.09	19091	-0.103	0.222	0.138	0.234	186.355124	7.277238	1196.53	-1296.07
5	GUIDE	37751880	9.65	19081	0.193	-0.130	0.092	0.150	185.771871	6.844190	-798.33	374.43
6	GUIDE	37756464	9.11	19102	0.137	-0.191	0.099	0.163	185.231345	6.571910	-2193.78	2032.46
7	GUIDE	114434008	8.76	19096	-0.246	-0.153	0.083	0.133	185.534773	7.569663	1550.30	1795.73

2.4 Star Slots

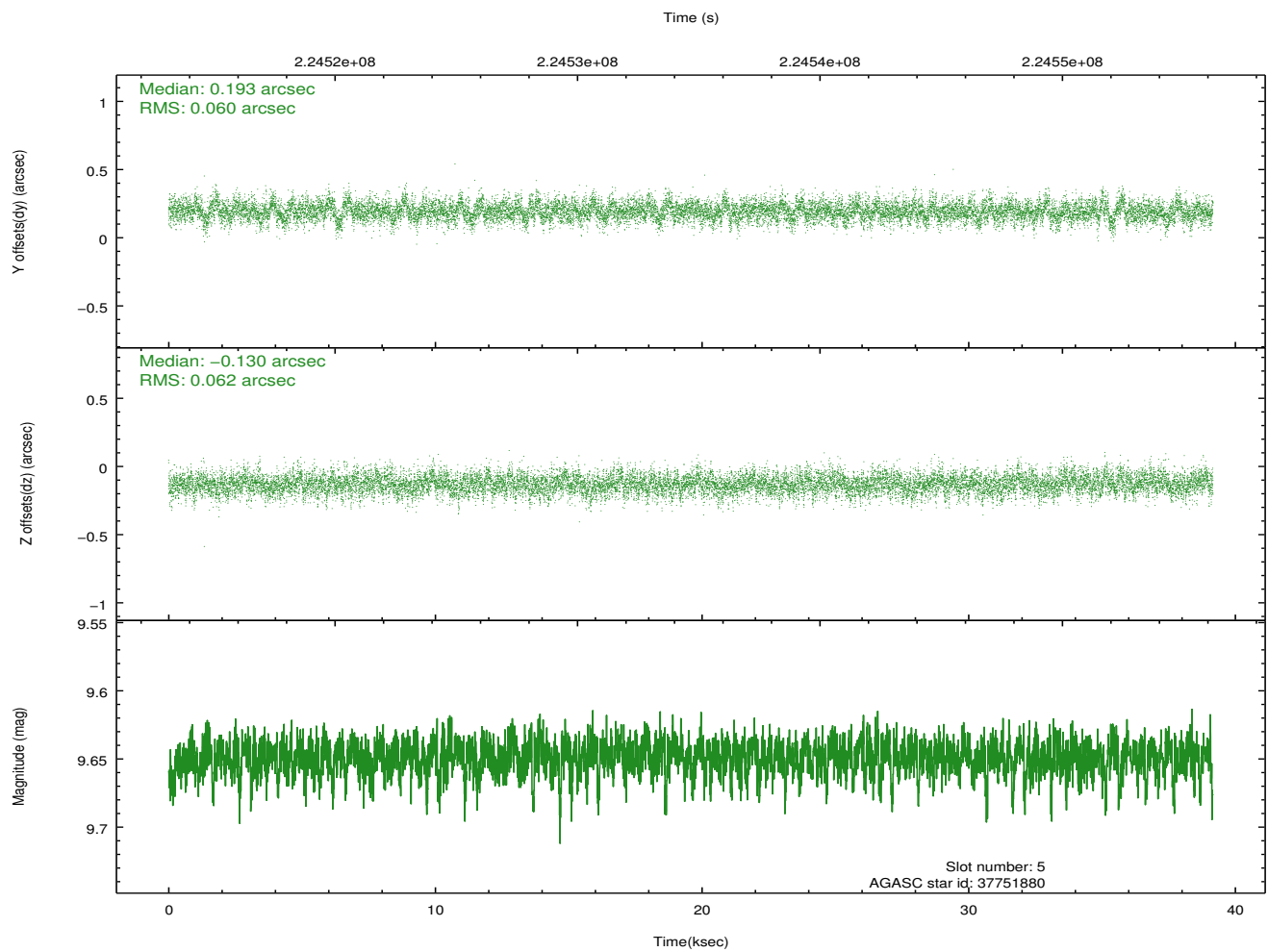
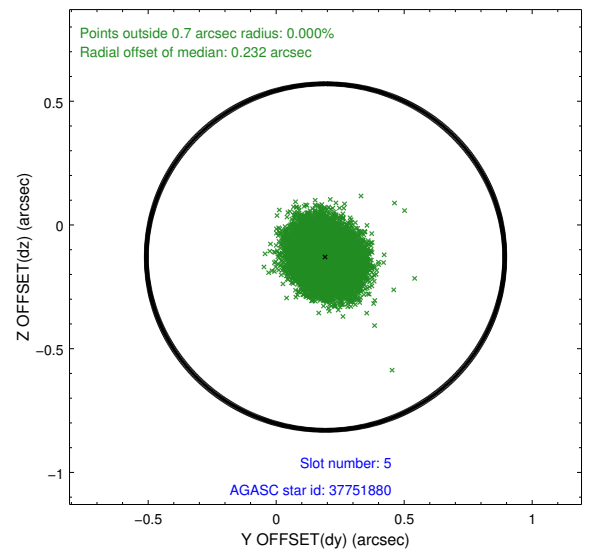
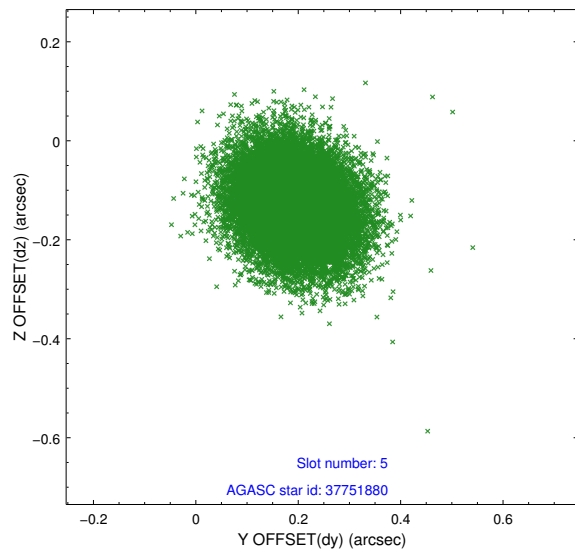
2.4.1 Slot 3



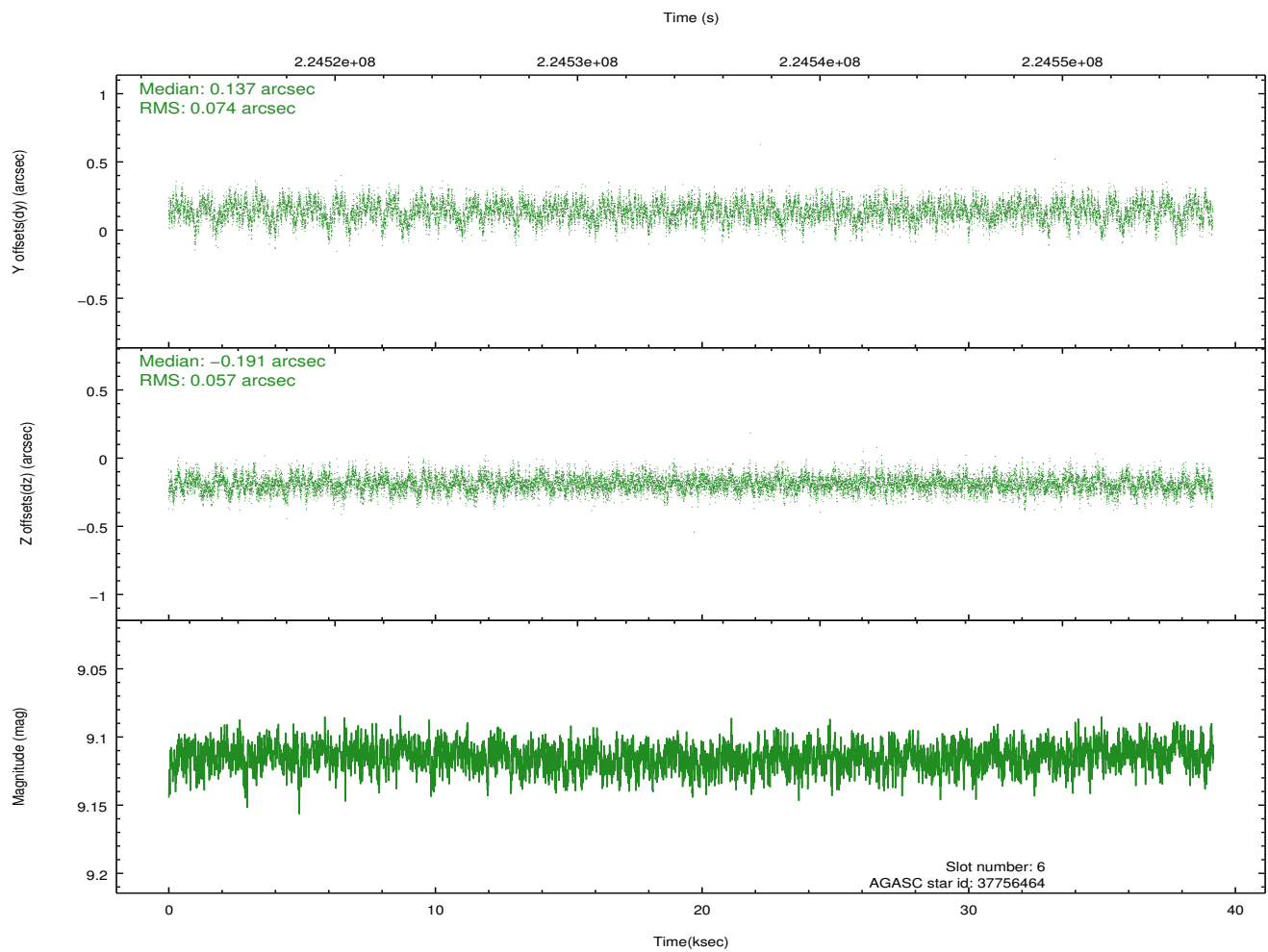
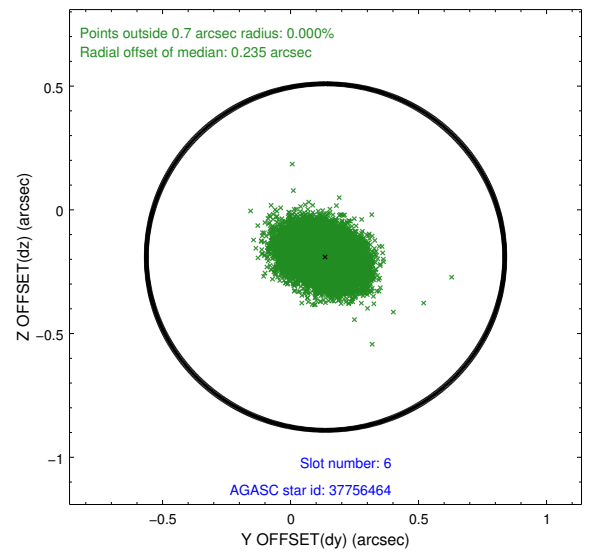
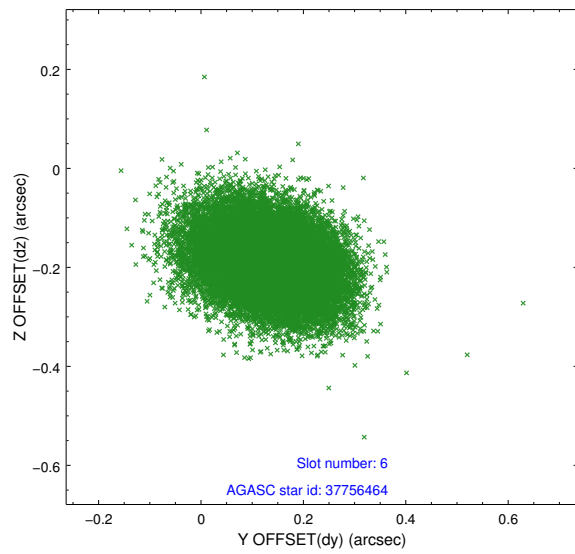
2.4.2 Slot 4



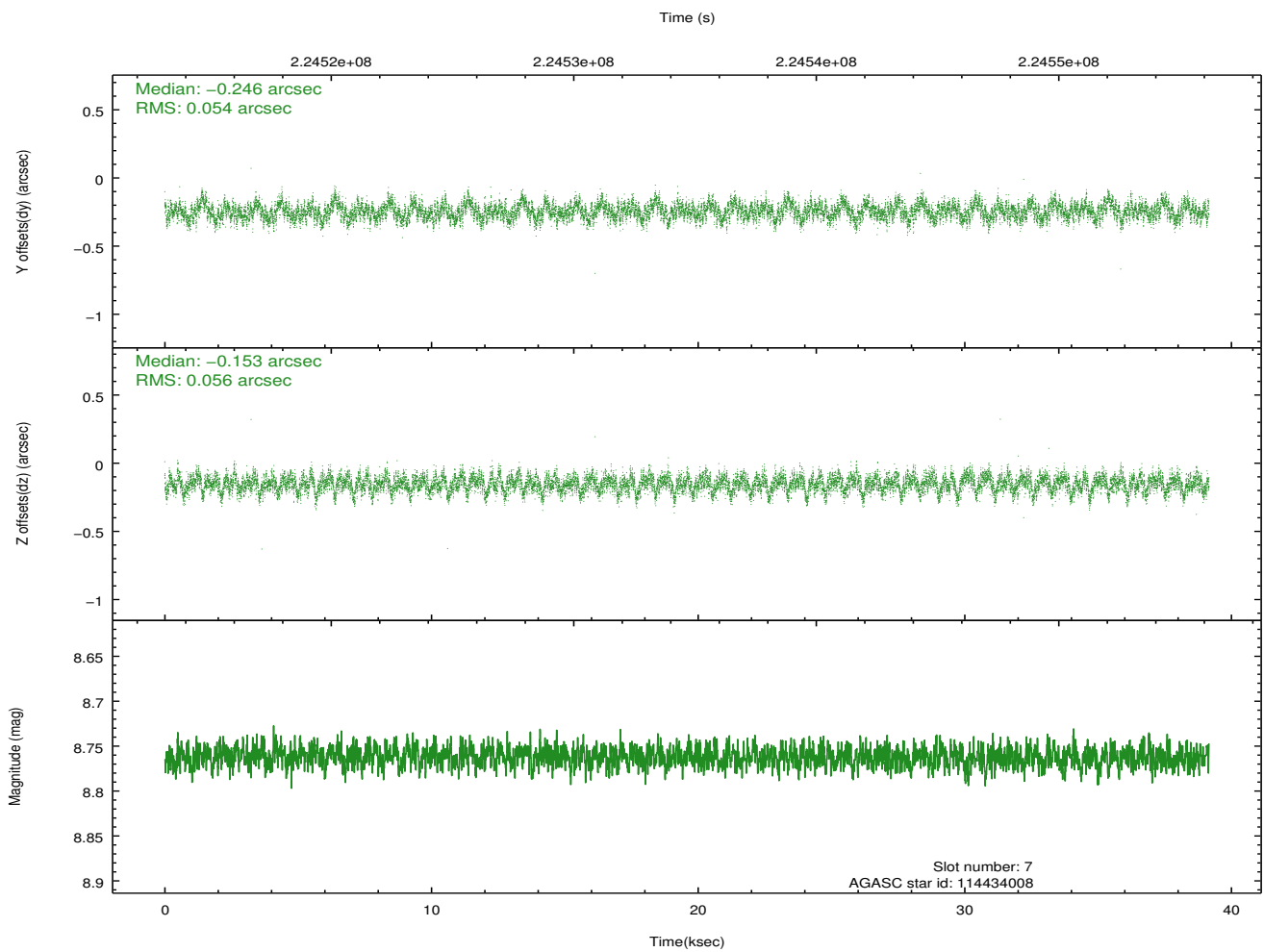
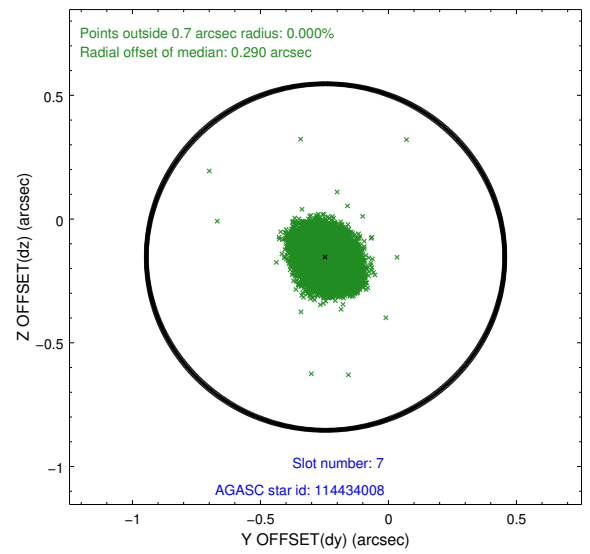
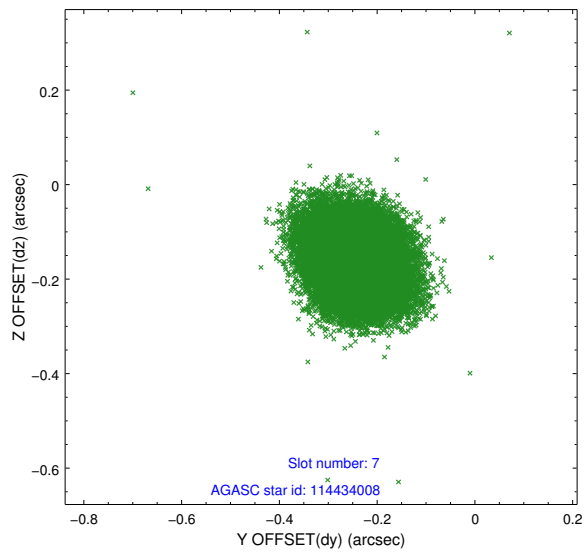
2.4.3 Slot 5



2.4.4 Slot 6

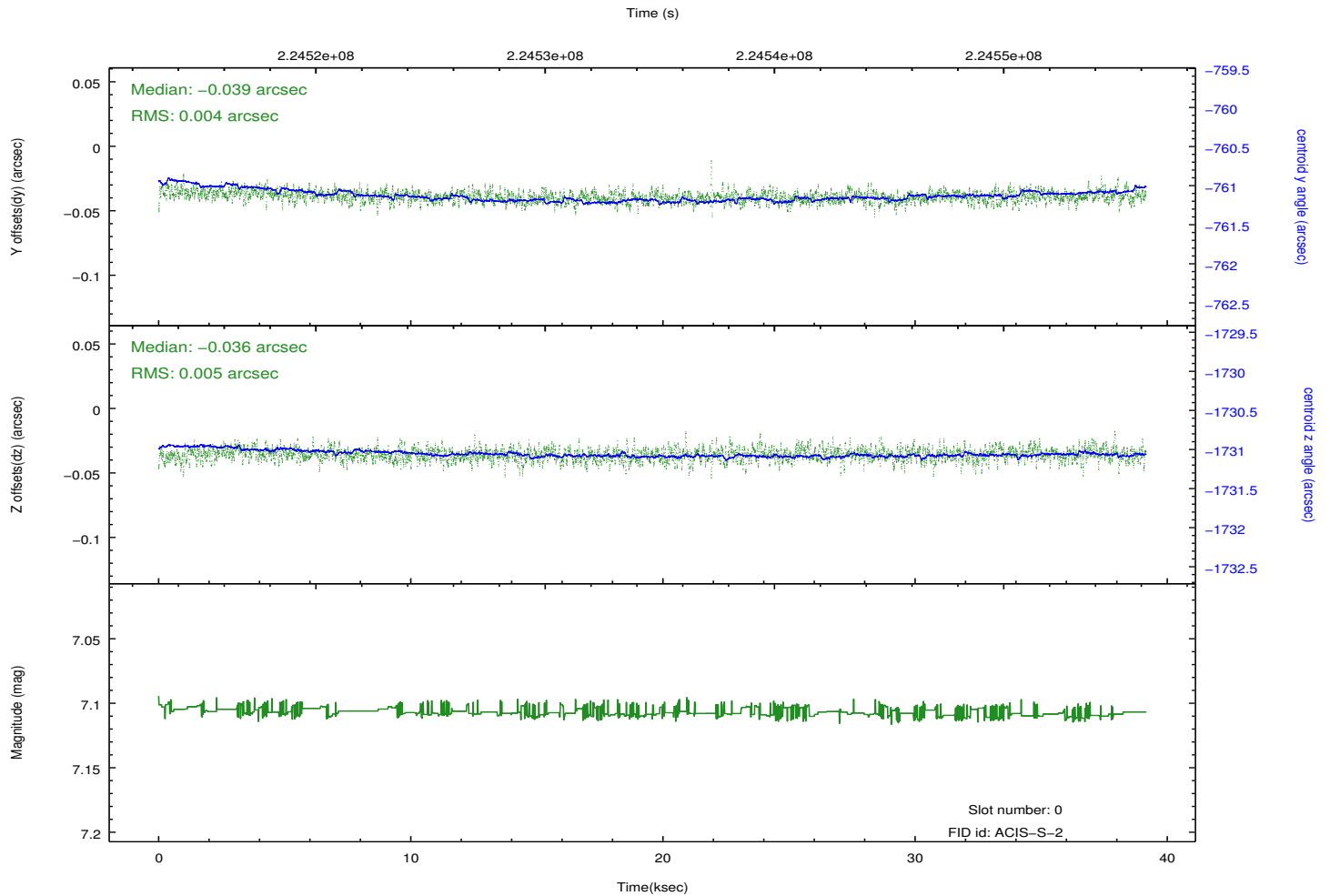
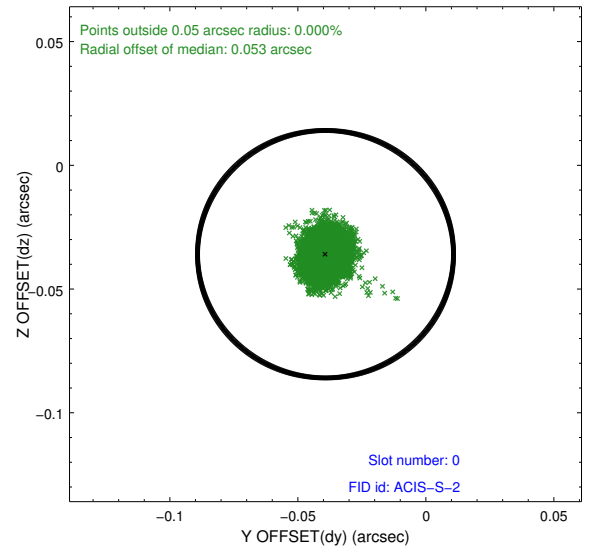
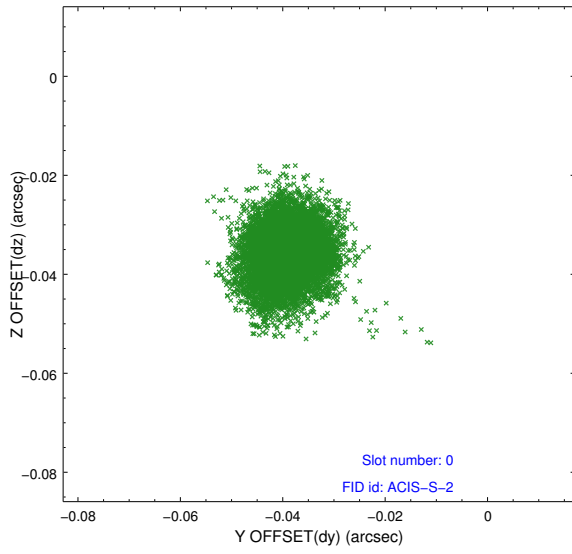


2.4.5 Slot 7

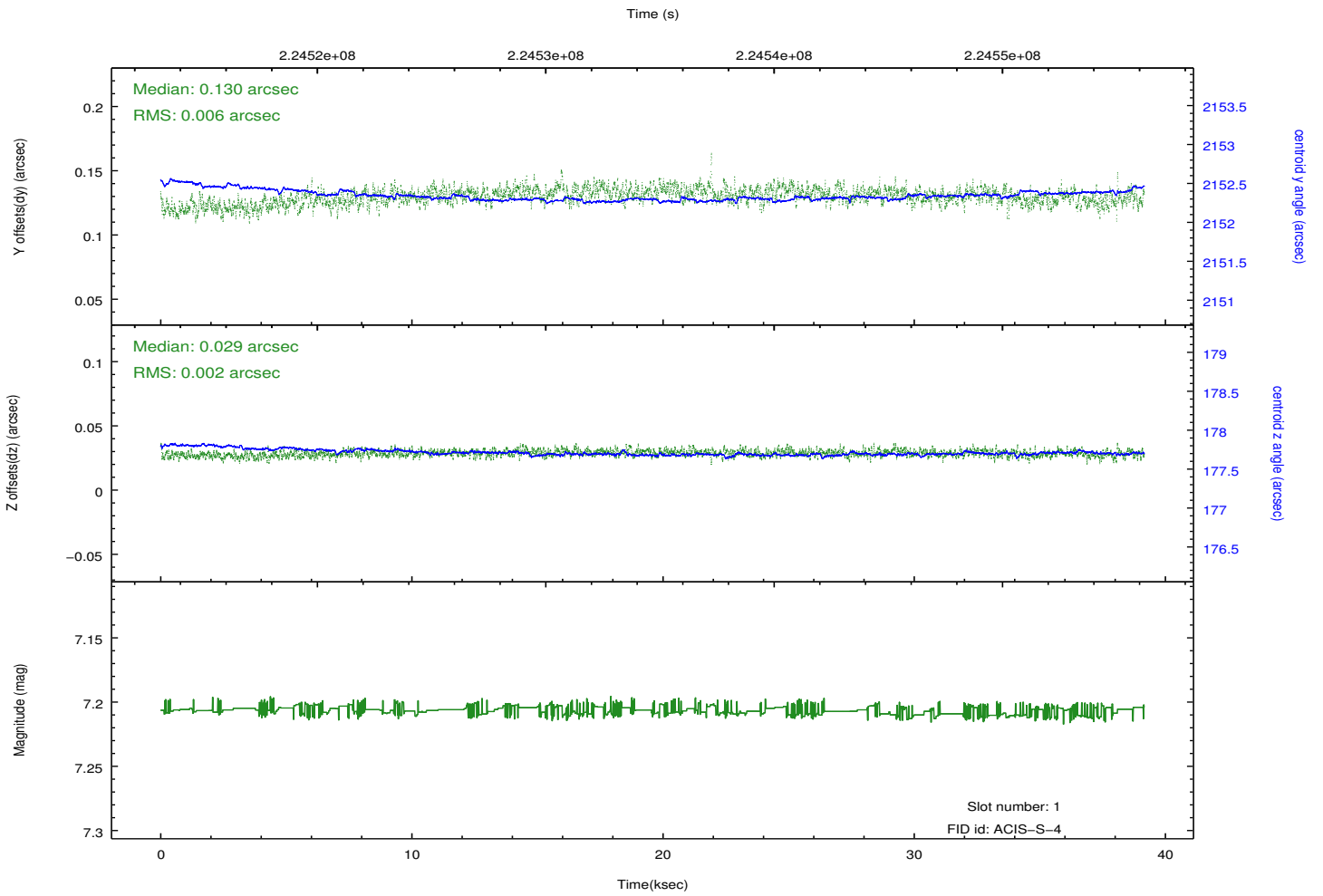
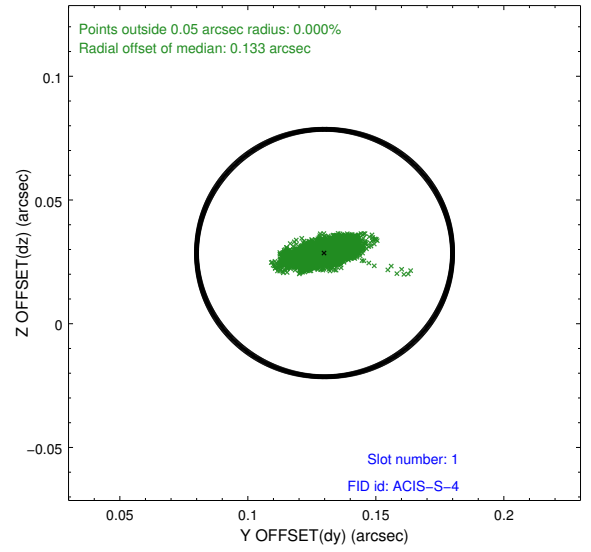
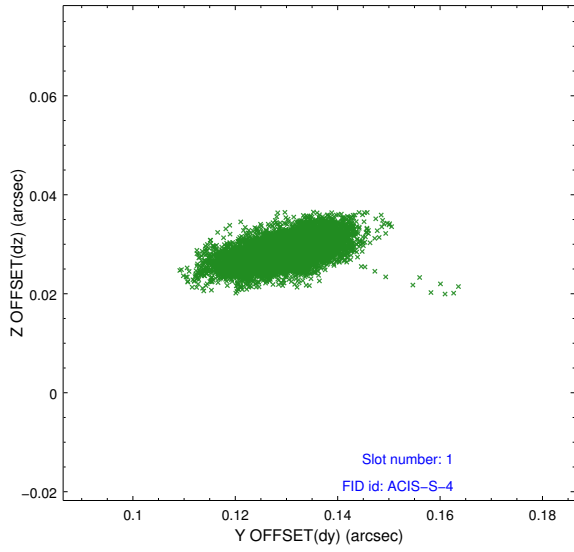


2.5 FID Slots

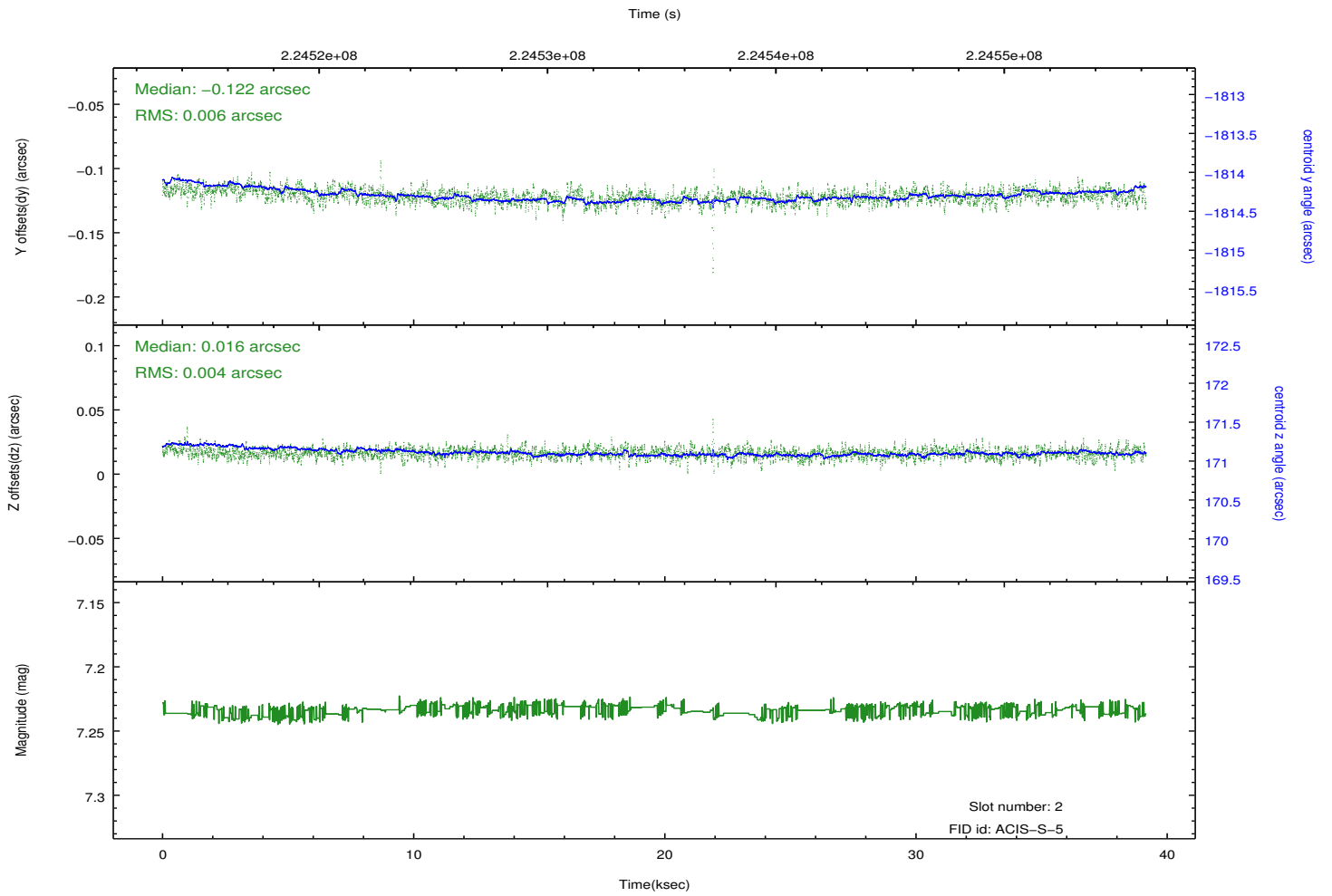
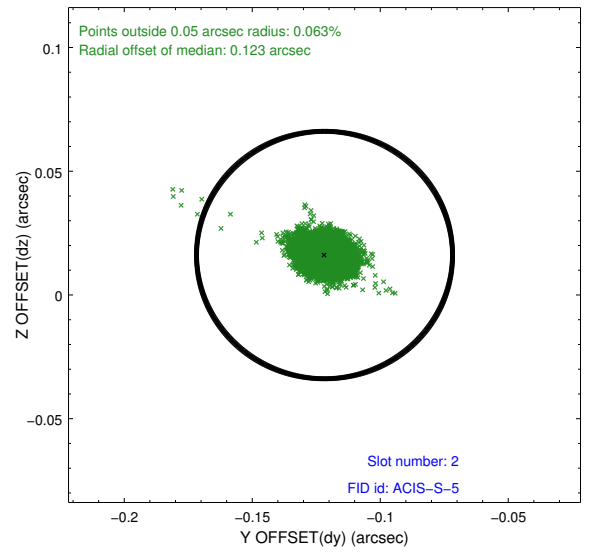
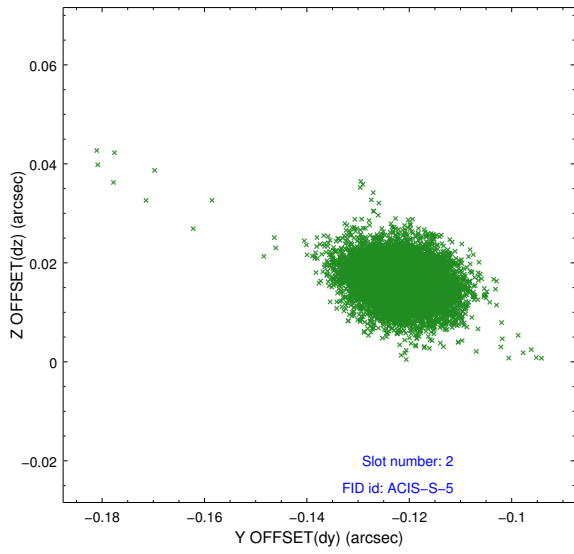
2.5.1 Slot 0



2.5.2 Slot 1



2.5.3 Slot 2



A Summary

A.1 Status

V&V Scientist	Jen Lauer
V&V Date (YYYY-MM-DD)	2013.01.10
V&V Edition	1
V&V Disposition and Status	OK
V&V Charge Time	38.75199

A.2 Comments