

V&V Reference Report

L2 ASCDS Version : 8.4.5

Observation 4807 - L2 Version 3
Chandra X-Ray Center

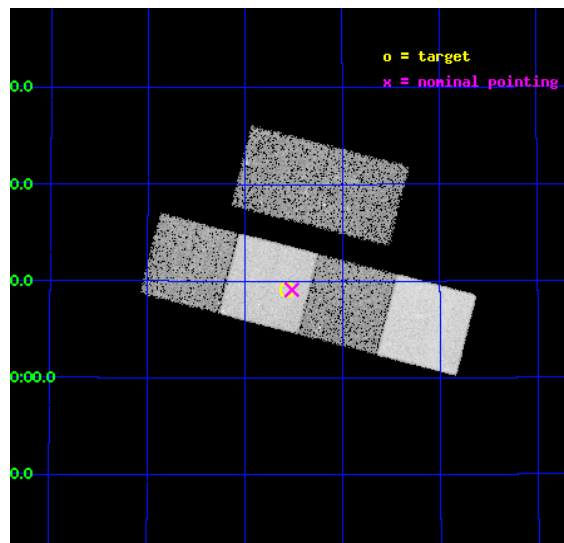
L2 Processing Date : Nov 12 2012

Contents

1	Front	2
2	OBI	3
2.1	OBI	3
2.1.1	Images	3
2.1.2	Bias	3
2.1.3	Parameters	4
2.1.4	Events	4
2.2	Compared Parameters	5
2.3	Aspect	6
2.4	Star Slots	9
2.4.1	Slot 3	9
2.4.2	Slot 4	10
2.4.3	Slot 5	11
2.4.4	Slot 6	12
2.4.5	Slot 7	13
2.5	FID Slots	14
2.5.1	Slot 0	14
2.5.2	Slot 1	15
2.5.3	Slot 2	16
A	Summary	17
A.1	Status	17
A.2	Comments	17

1 Front

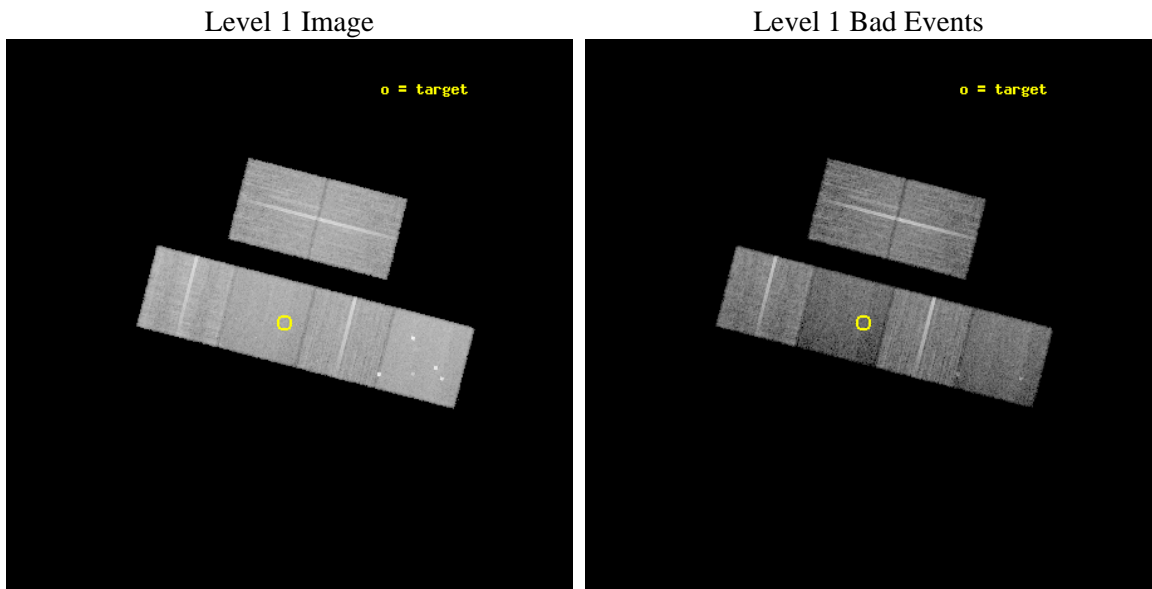
seq_num	700890	Sequence number
obs_id	4807	Observation id
title	A Chandra observation of the $z=2.286$ Seyfert 2 galaxy FSC10214+4724: Constraints on AGNs in typical submm galaxies	Proposal title
observer	Dr David Alexander	Principal investigator
object	FSC 10214+4724	Source name
dtcycle	0	
cycle	P	events from which exps? Prim/Second/Both
ra_targ	156.14375	Observer's specified target RA [deg]
dec_targ	47.152722	Observer's specified target Dec [deg]
ra_nom	156.12956255593	Nominal RA [deg]
dec_nom	47.151973219881	Nominal Dec [deg]
roll_nom	194.40863341125	Nominal Roll [deg]
revision	3	Processing version of data
ontime	21708.799919128	Sum of GTIs [s]
livetime	21433.910023082	Livetime [s]
ontime2	21708.799919128	Sum of GTIs [s]
ontime3	21708.799919128	Sum of GTIs [s]
ontime5	21708.799919128	Sum of GTIs [s]
ontime6	21705.55890891	Sum of GTIs [s]
ontime7	21708.799919128	Sum of GTIs [s]
ontime8	21708.799919128	Sum of GTIs [s]
l2events	154425	Number of level 2 events



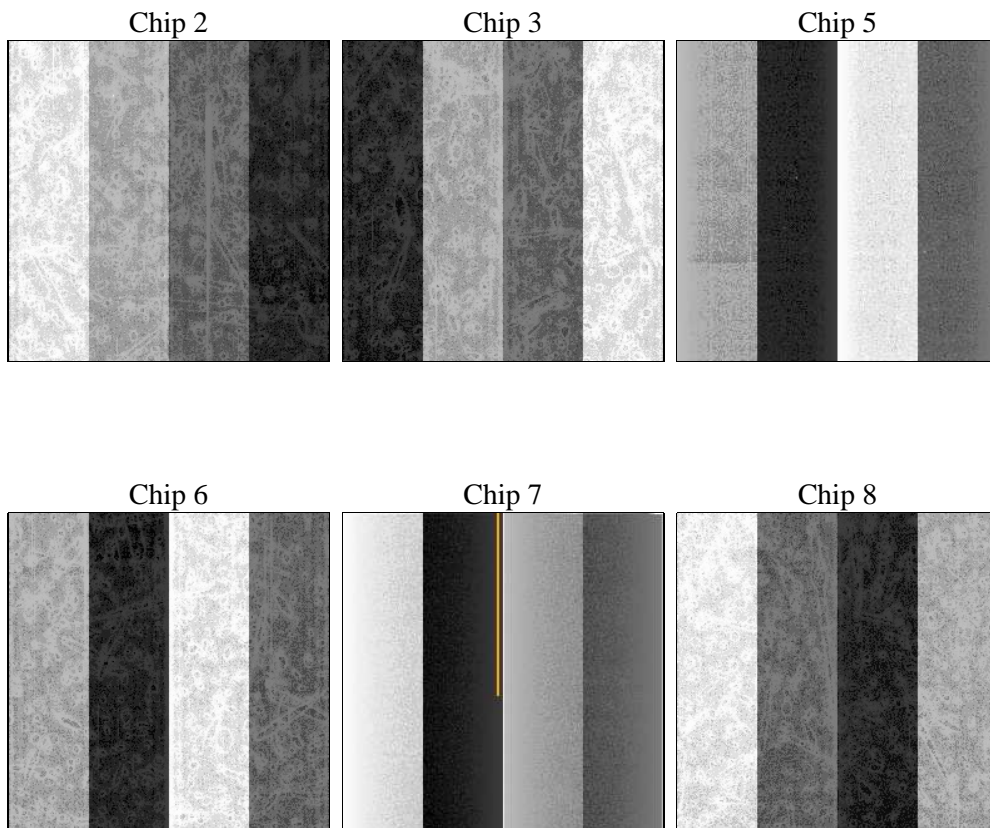
2 OBI

2.1 OBI

2.1.1 Images



2.1.2 Bias



2.1.3 Parameters

obi_num	3	Obi number	sched_exp_time	21524.000000	[s] Scheduled observation exposure time
ascdsver	8.4.5	Processing system revision	ontime	21708.799919128	Sum of GTIs [s]
caldbver	4.5.2	 	ontime2	21708.799919128	Sum of GTIs [s]
date	2012-11-12T16:03:25	Date and time of file creation	ontime3	21708.799919128	Sum of GTIs [s]
revision	3	Processing version of data	ontime5	21708.799919128	Sum of GTIs [s]
			ontime6	21705.55890891	Sum of GTIs [s]
			ontime7	21708.799919128	Sum of GTIs [s]
			ontime8	21708.799919128	Sum of GTIs [s]
			l1events	722830	Number of level 1 events

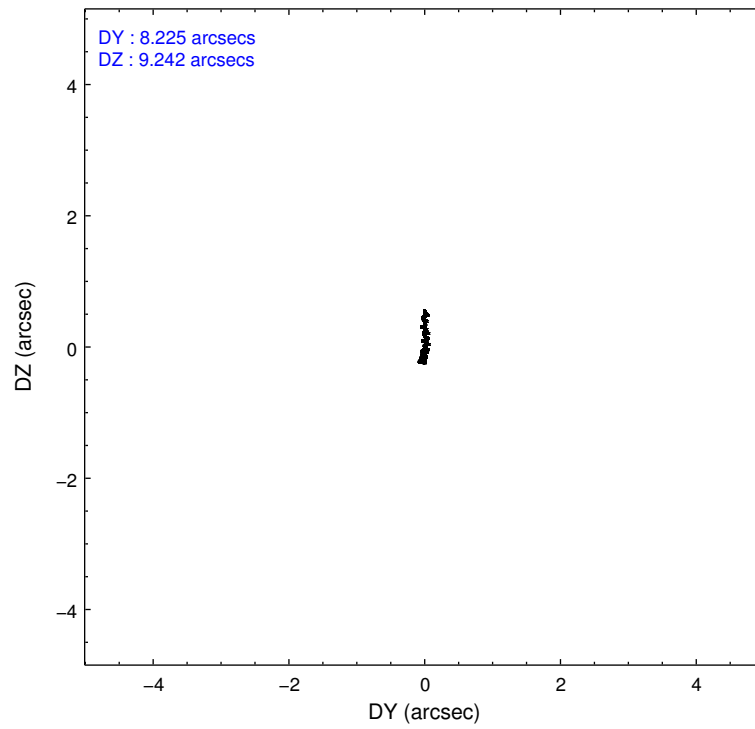
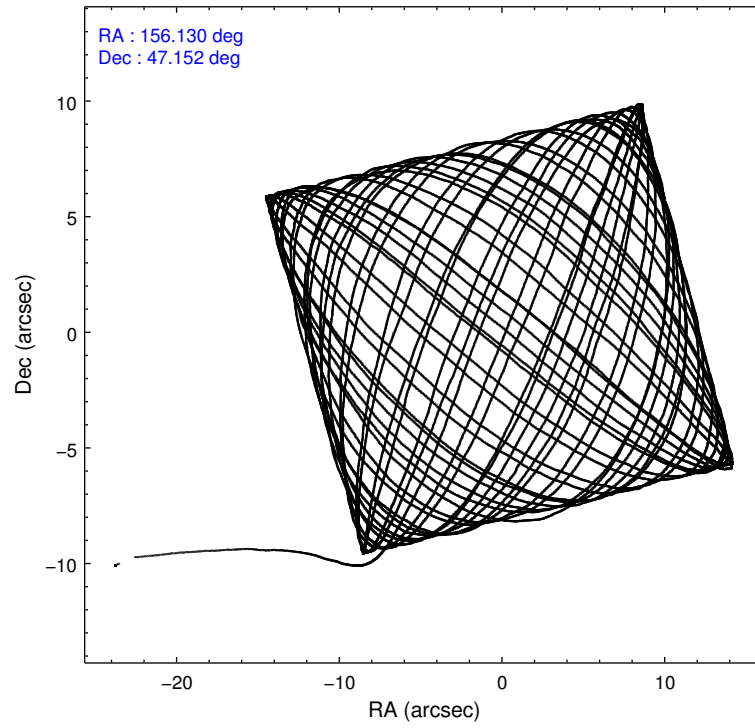
2.1.4 Events

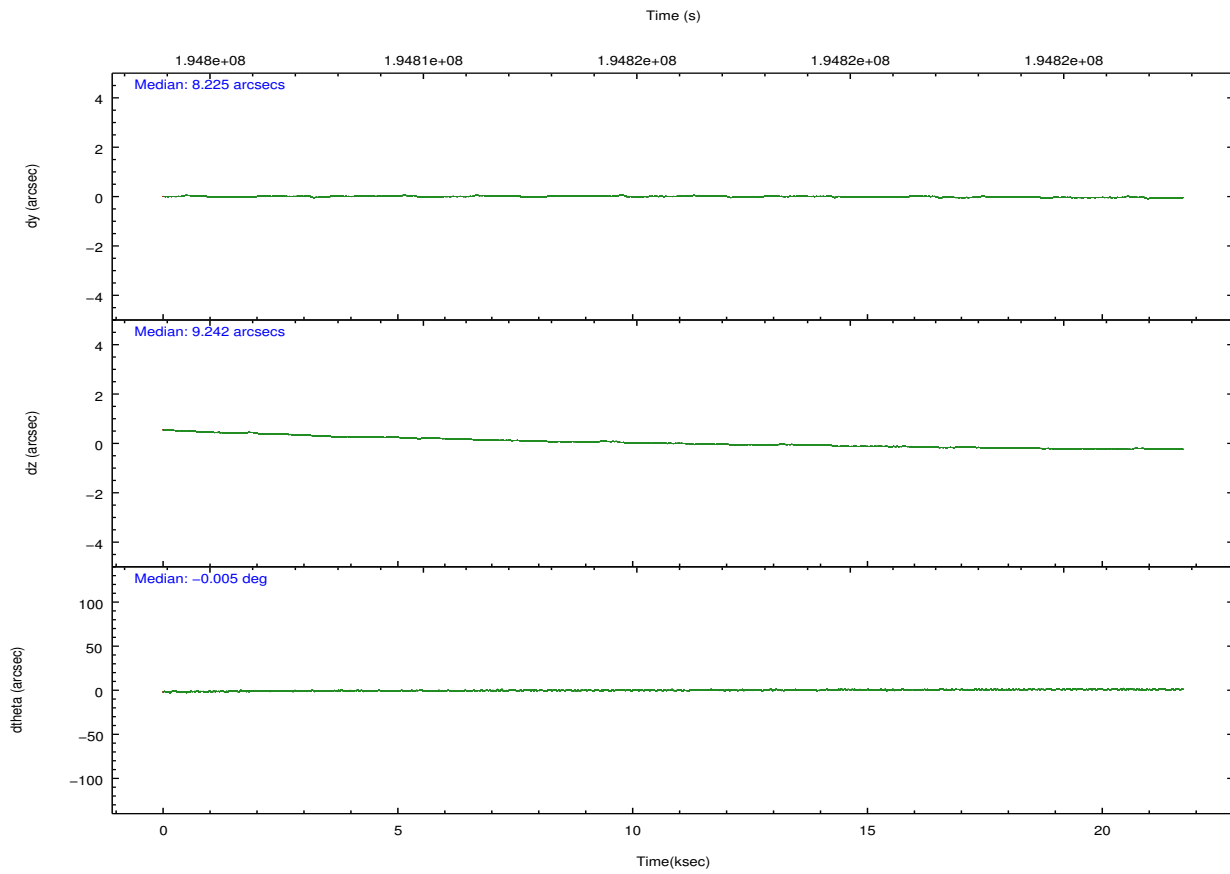
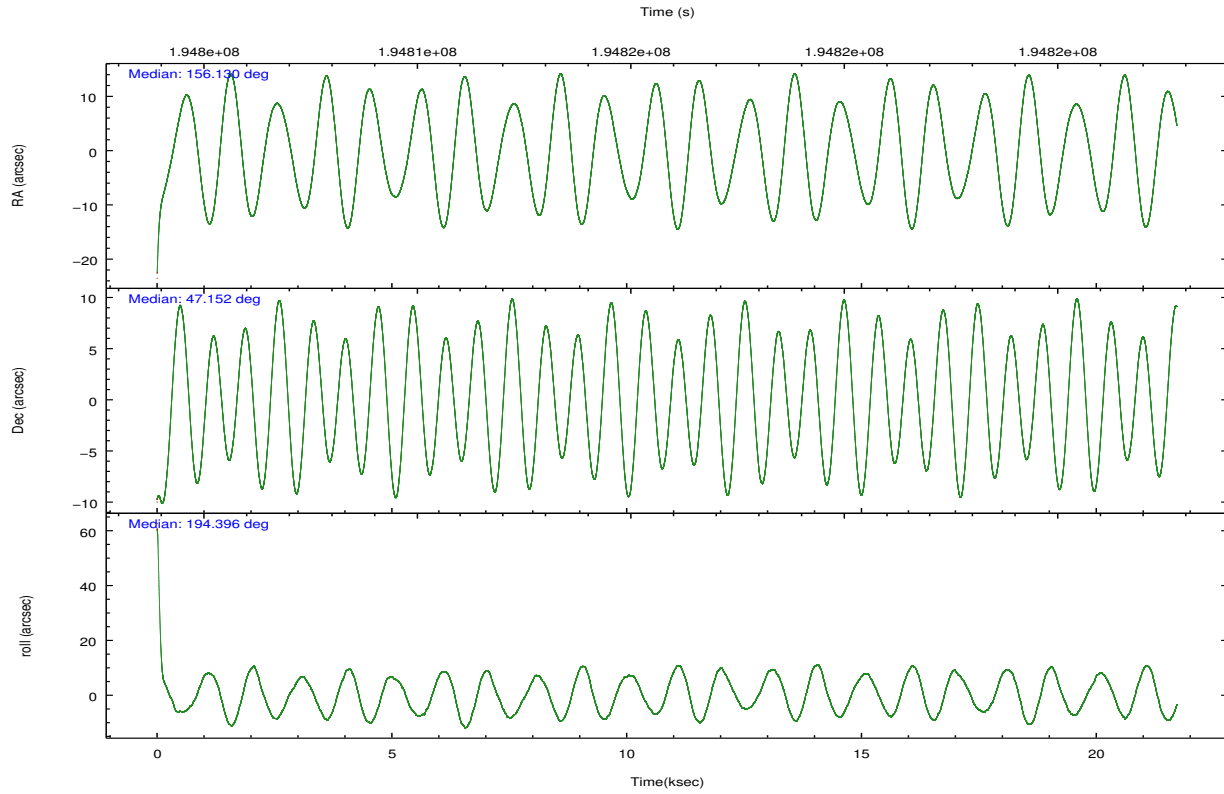
	ccd 2	ccd 3	ccd 5	ccd 6	ccd 7	ccd 8		ccd 2	ccd 3	ccd 5	ccd 6	ccd 7	ccd 8
level 1 events	115883	109196	141748	111473	106675	137855	grade 0 events	4045	3750	11171	4000	5169	8383
rejected events	104956	99059	65808	100358	54817	106977		3%	3%	7%	3%	4%	6%
rejected %	90%	90%	46%	90%	51%	77%	grade 1 events	52	57	204	50	116	86
								0%	0%	0%	0%	0%	0%
							grade 2 events	2621	2156	21978	2394	10833	7445
								2%	1%	15%	2%	10%	5%
							grade 3 events	1170	1129	3863	1231	5084	3447
								1%	1%	2%	1%	4%	2%
							grade 4 events	1214	1190	3529	1213	4984	3264
								1%	1%	2%	1%	4%	2%
							grade 5 events	3306	3727	11818	3799	11541	5622
								2%	3%	8%	3%	10%	4%
							grade 6 events	1911	1954	35743	2326	26000	8443
								1%	1%	25%	2%	24%	6%
							grade 7 events	101564	95233	53442	96460	42948	101165
								87%	87%	37%	86%	40%	73%

2.2 Compared Parameters

Parameter	Planned	Actual	Parameter	Planned	Actual
Instrument	ACIS	ACIS	Obspar format version number	7	7
Detector	ACIS-235678	ACIS-235678	Obspar file type	PREDICTED	ACTUAL
Grating	NONE	NONE	Obspar update status	NONE	UPDATED
Data mode	FAINT	FAINT	Number of optional ACIS chips dropped	0	0
Observation mode	POINTING	POINTING	On-chip summing requested	N	N
[deg] Pointing RA	156.157806	156.1295625559306	Subarray requested	NONE	NONE
[deg] Pointing Dec	47.171311	47.15197321988075	Alternating exposures requested	N	N
[deg] Pointing Roll	194.231266	194.4086334112492	[s] Primary exposure time	0.000000	3.2
[mm] SIM focus pos	-0.684267	-0.6828225247311905			
[mm] SIM defocus	0	0.001444936568705701			
[mm] SIM translation stage pos	-190.132523	-190.1400660498719			
[mm] SIM translation stage offset	0	0.00754346686406393			
[s] Observation start time (MET)	194805185.184000	194804069.98825			
Observation start date	2004-03-04T16:32:01	2004-03-04T16:14:29			
[s] Observation end time (MET)	194826709.184000	194827681.37678			
Observation end date	2004-03-04T22:30:45	2004-03-04T22:48:01			
Read mode	TIMED	TIMED			

2.3 Aspect



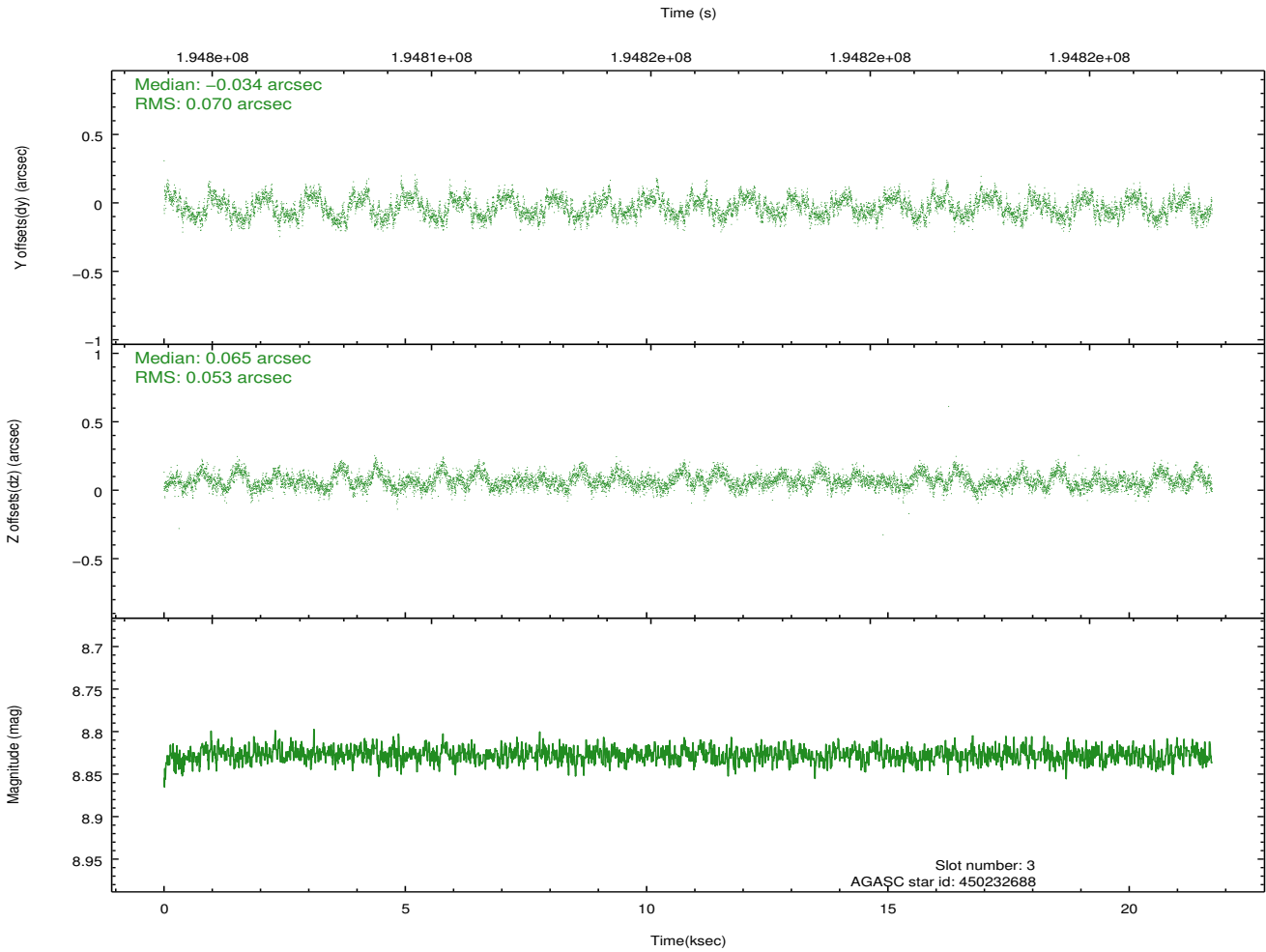
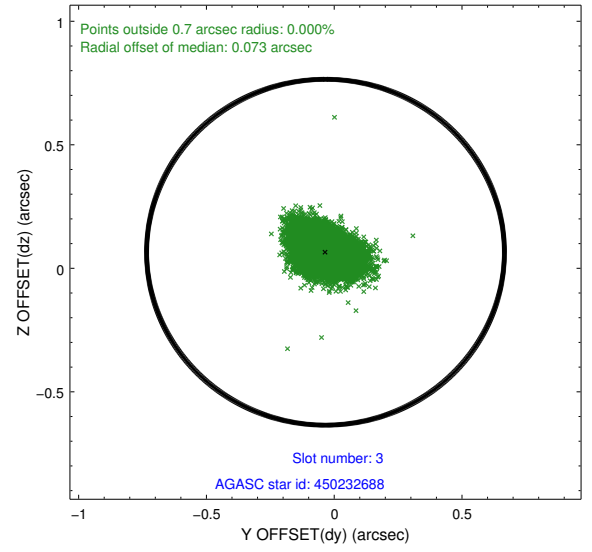
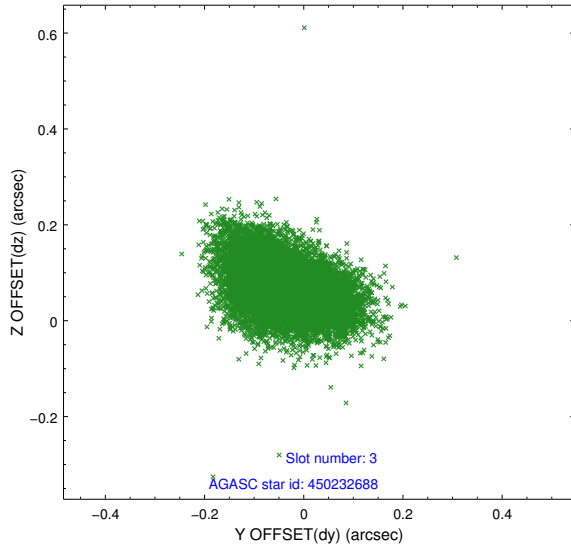


Slot Statistics

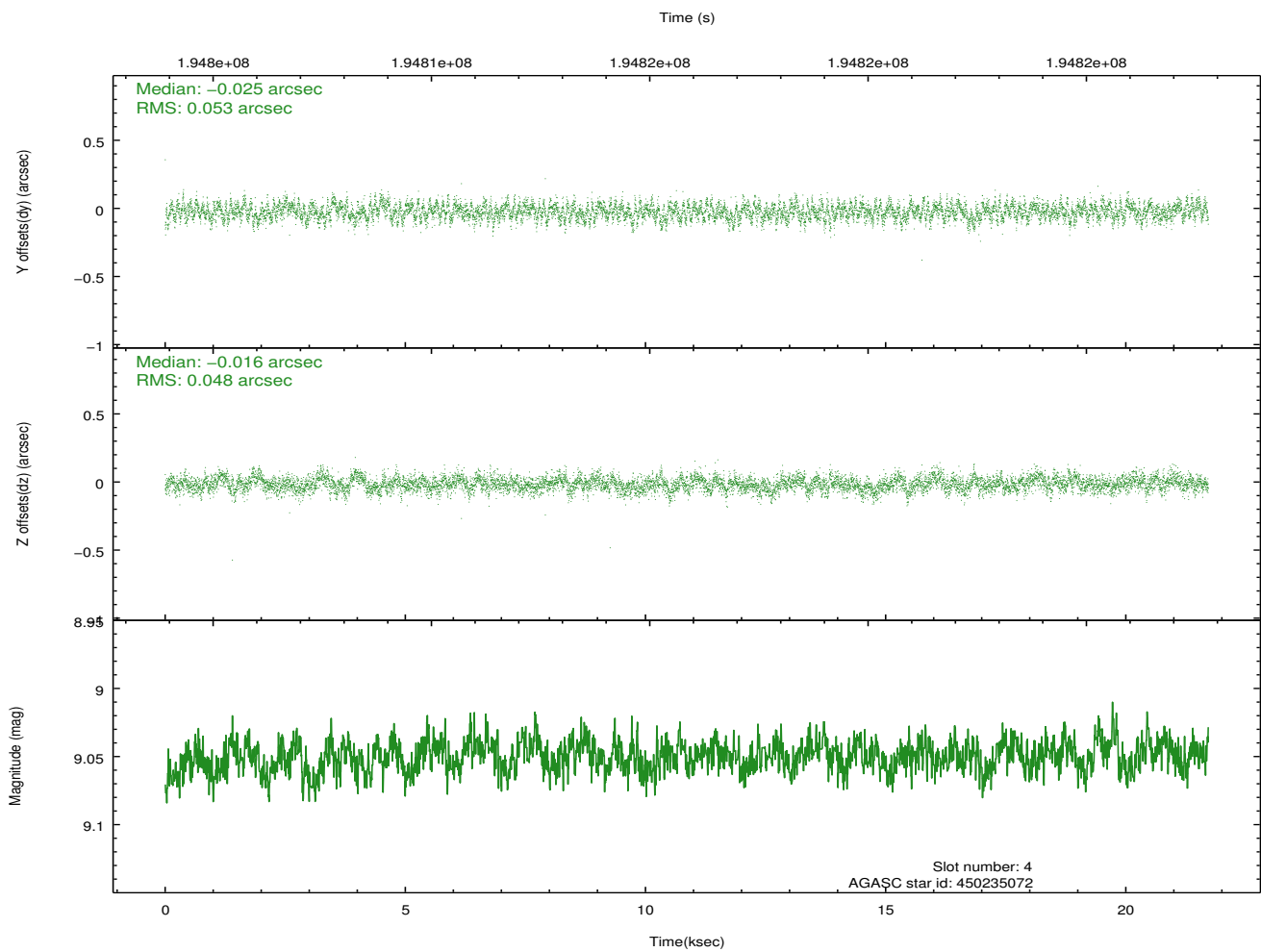
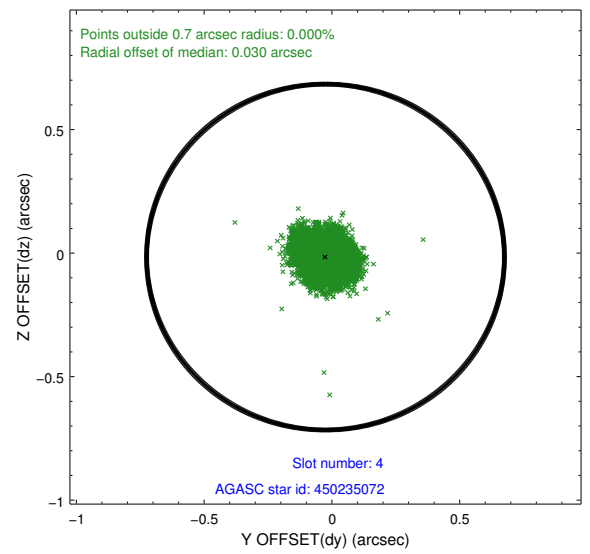
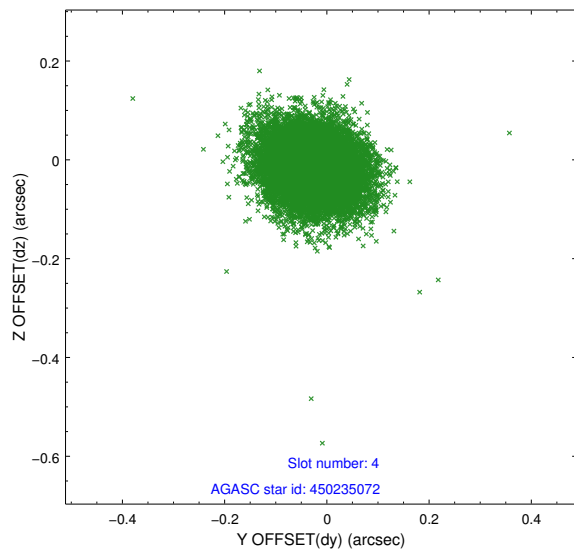
slot	status	id	mag	n_pts	med_dy	med_dz	dr1	dr2	ra	dec	mean_y	mean_z
0	FID	ACIS-S-2	7.11	5296	-0.017	-0.028	0.010	0.016	0.000000	0.000000	-761.00	-1730.55
1	FID	ACIS-S-4	7.21	5297	0.077	0.016	0.006	0.011	0.000000	0.000000	2152.27	177.85
2	FID	ACIS-S-5	7.24	5297	-0.091	0.021	0.009	0.016	0.000000	0.000000	-1813.73	171.66
3	GUIDE	450232688	8.83	10588	-0.034	0.065	0.094	0.150	156.759869	46.937053	-1228.67	1176.38
4	GUIDE	450235072	9.05	10593	-0.025	-0.016	0.075	0.122	156.908877	46.808861	-1475.46	1711.28
5	GUIDE	450236704	9.24	10591	0.030	0.004	0.090	0.145	156.809685	46.714771	-1157.65	1982.52
6	GUIDE	450632976	9.49	10589	-0.019	-0.026	0.104	0.166	155.857098	47.599681	329.00	-1674.84
7	GUIDE	450633256	7.93	10590	0.052	-0.029	0.065	0.105	156.404075	47.567395	-930.09	-1235.98

2.4 Star Slots

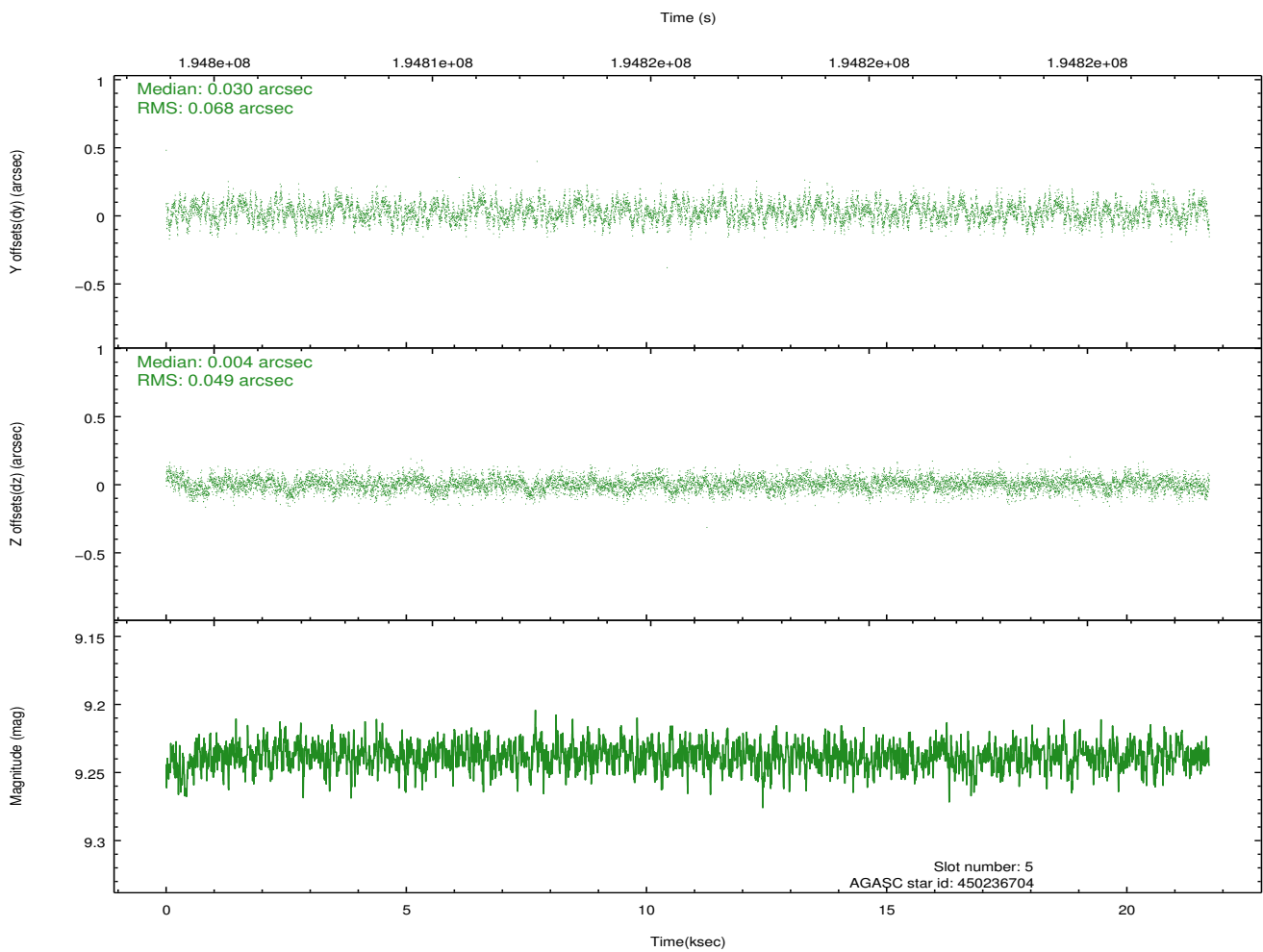
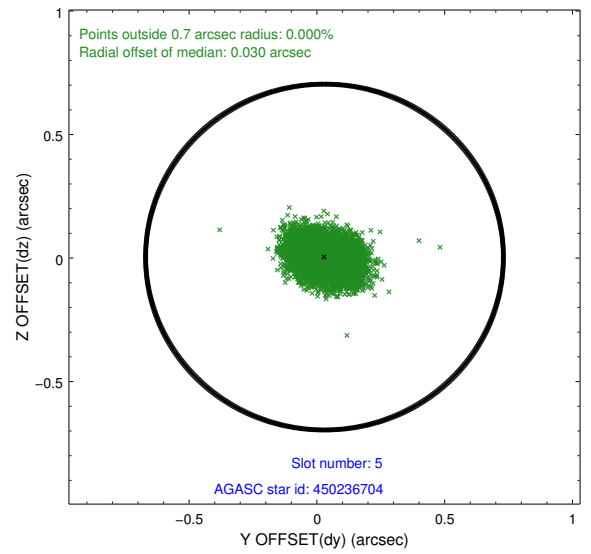
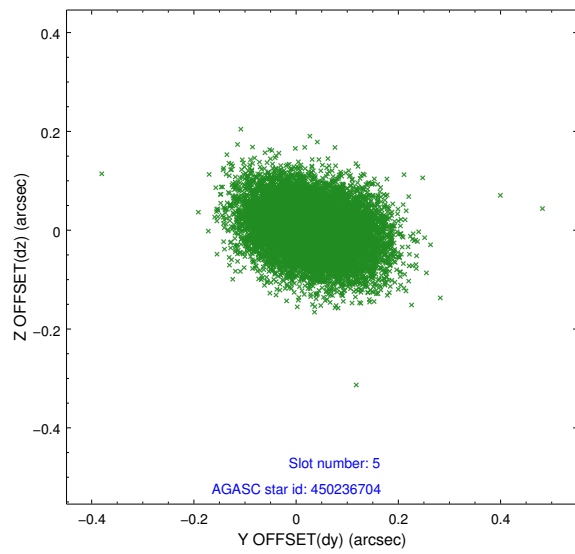
2.4.1 Slot 3



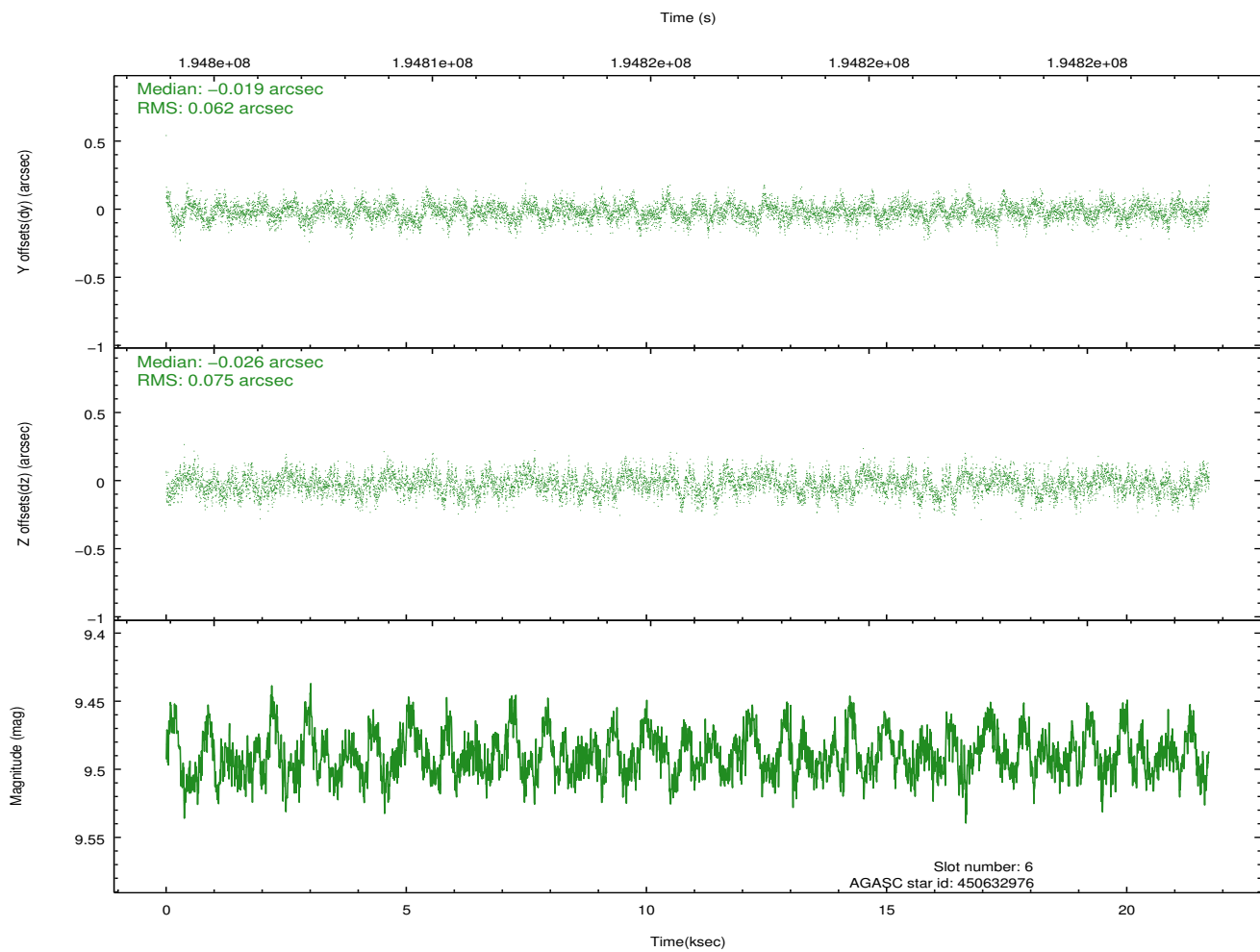
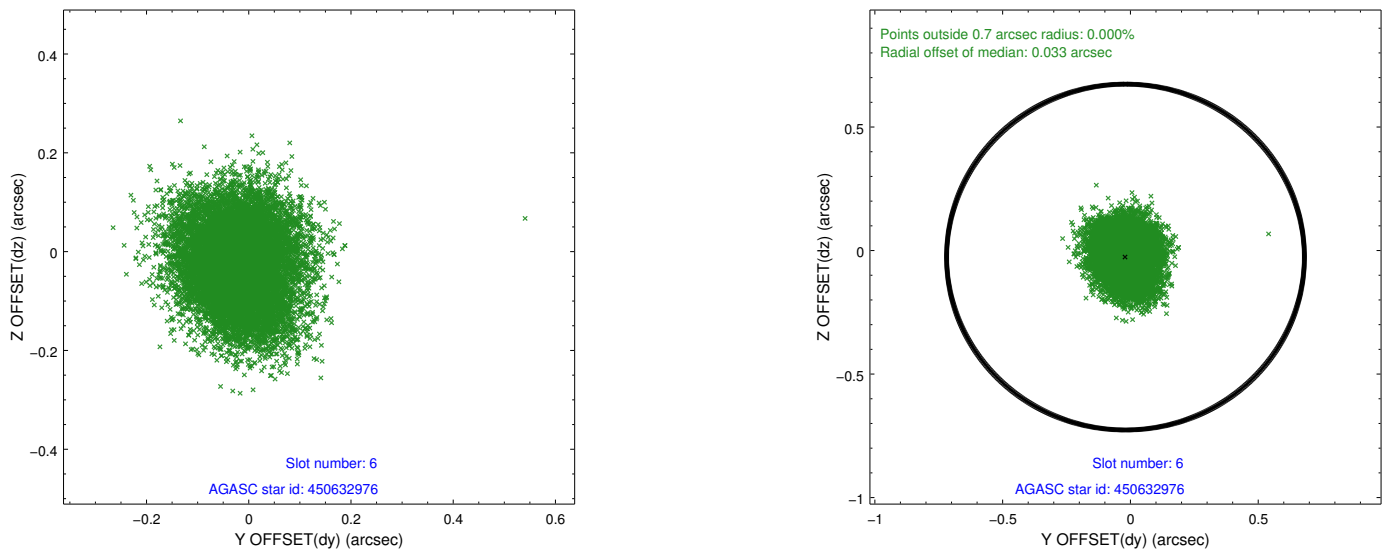
2.4.2 Slot 4



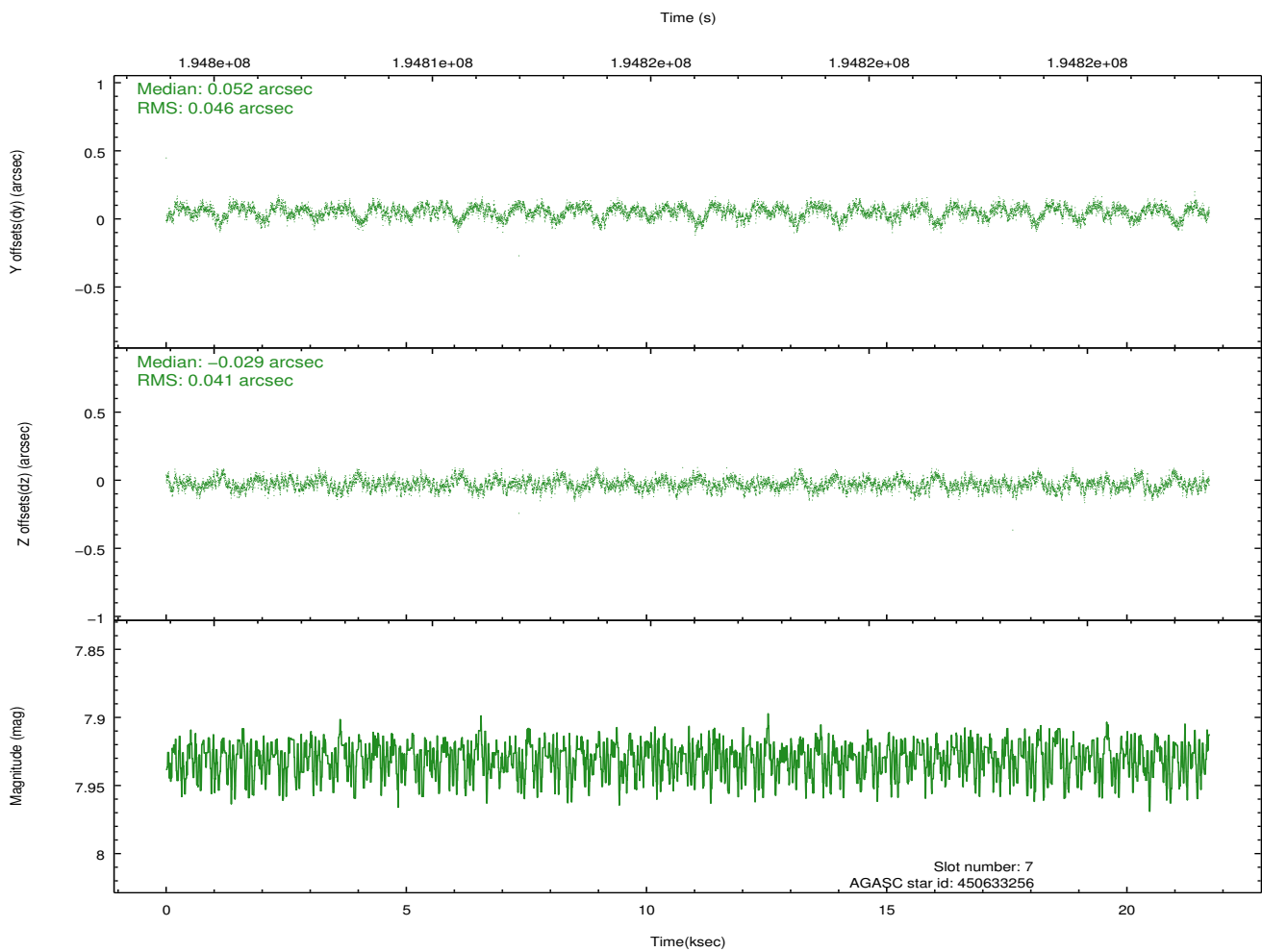
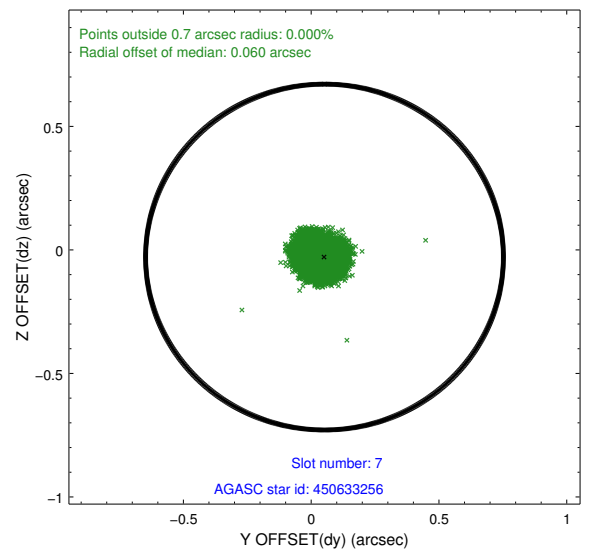
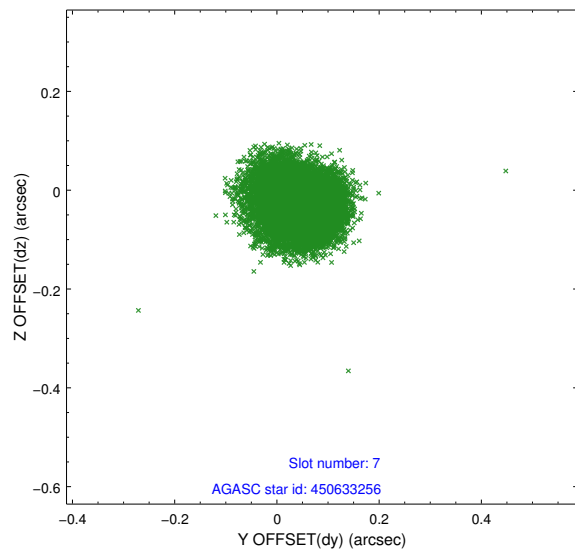
2.4.3 Slot 5



2.4.4 Slot 6

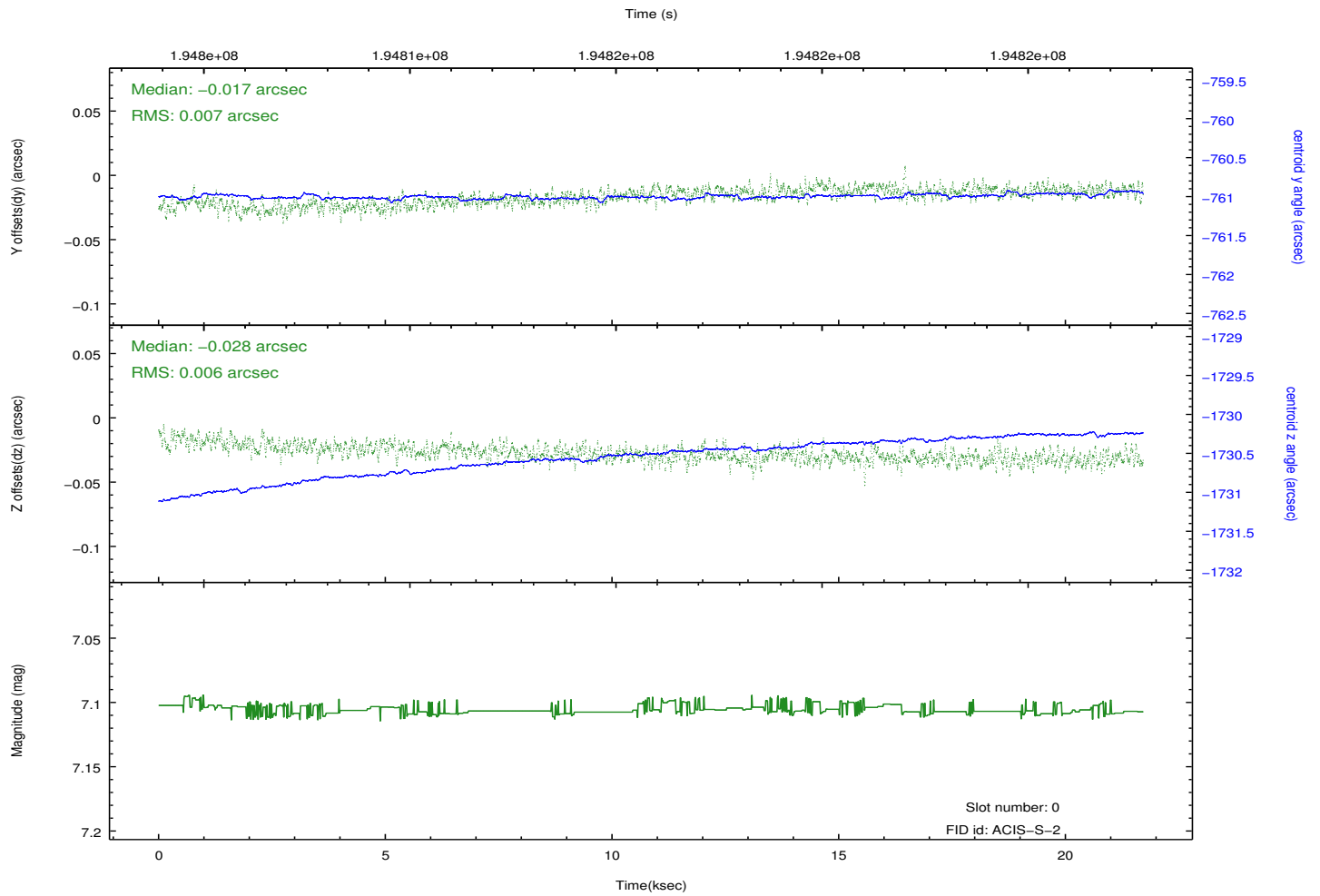
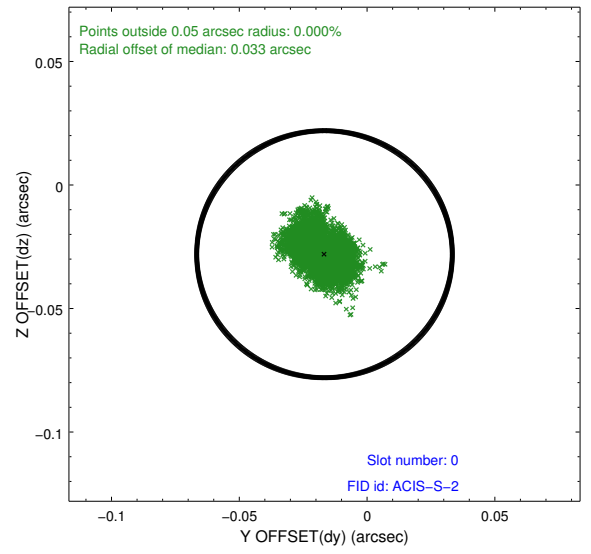
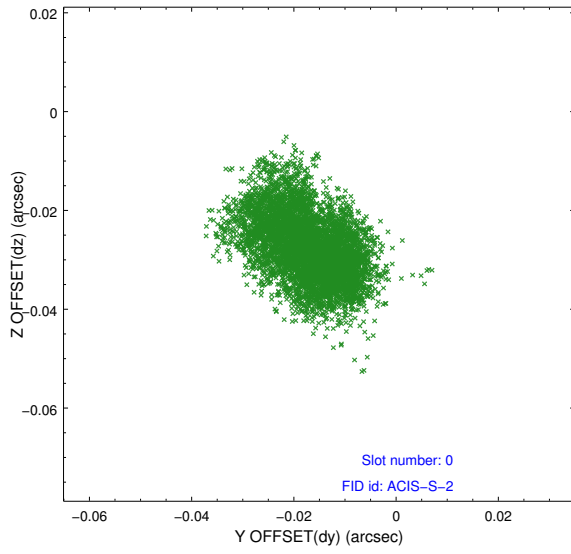


2.4.5 Slot 7

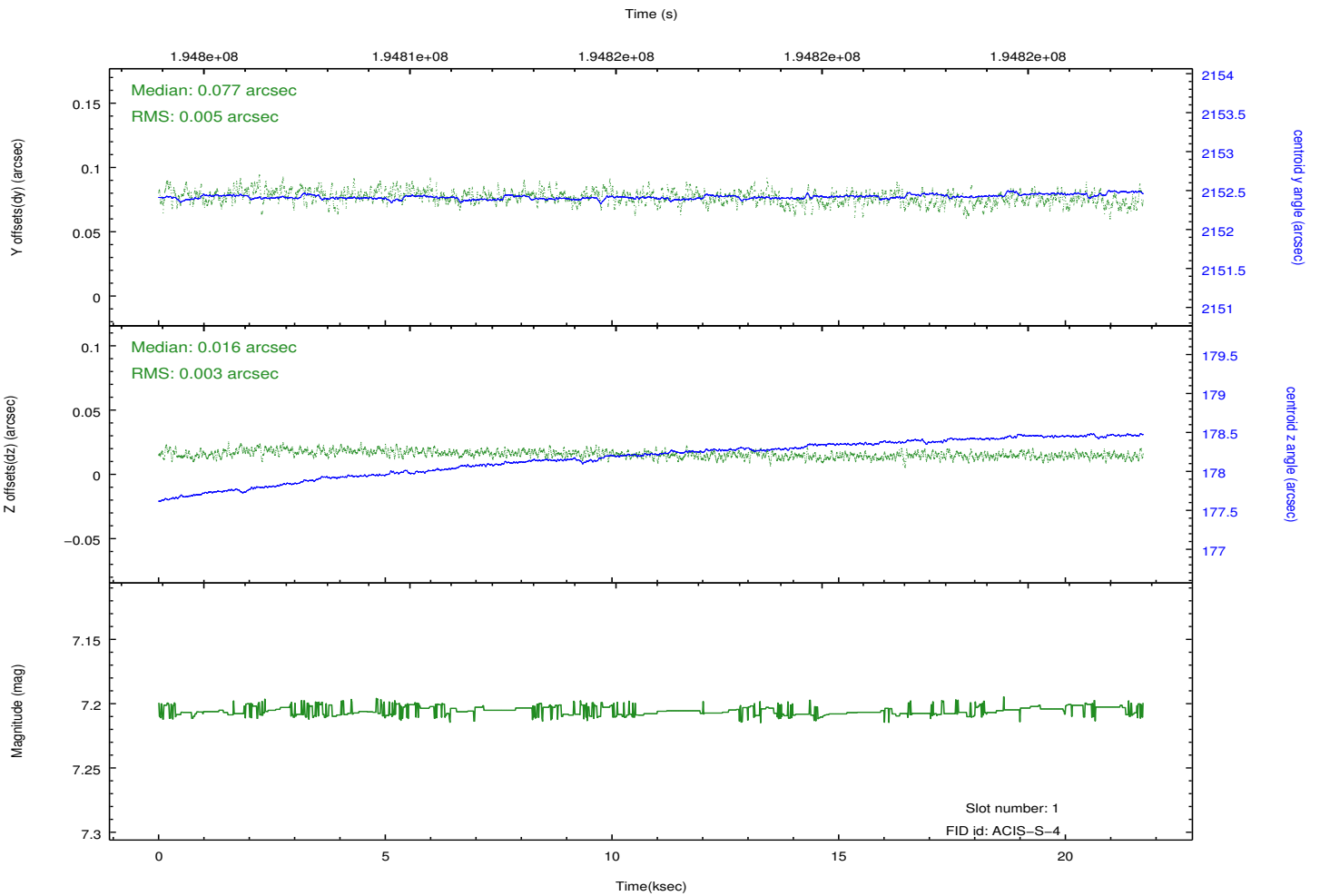
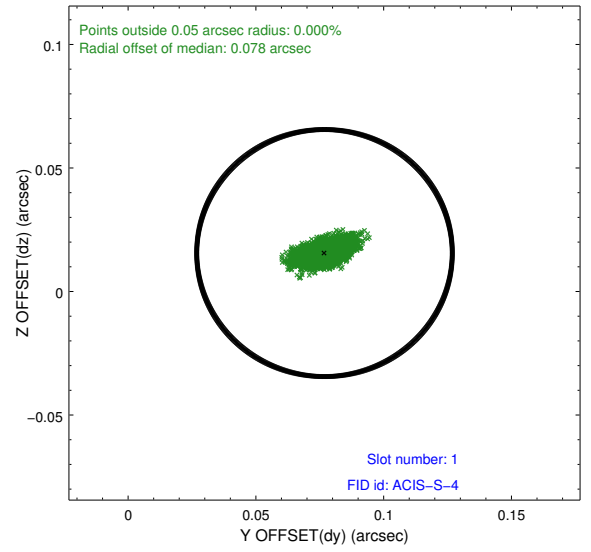
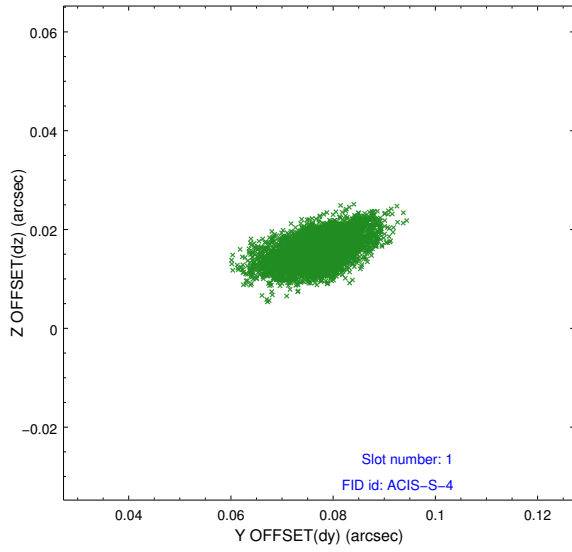


2.5 FID Slots

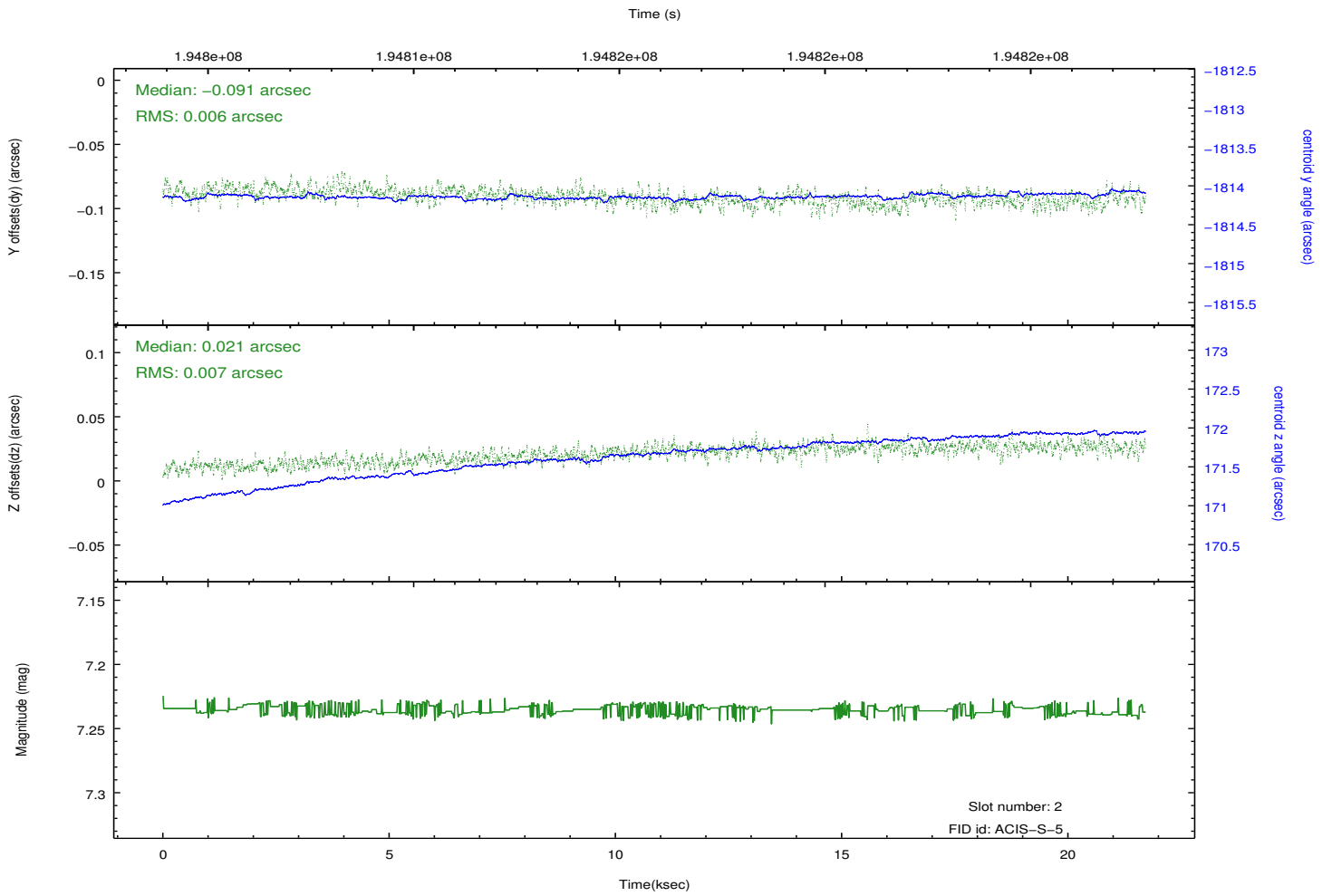
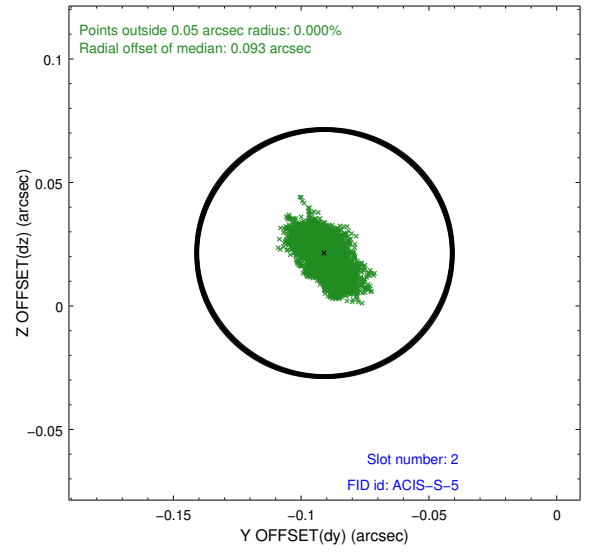
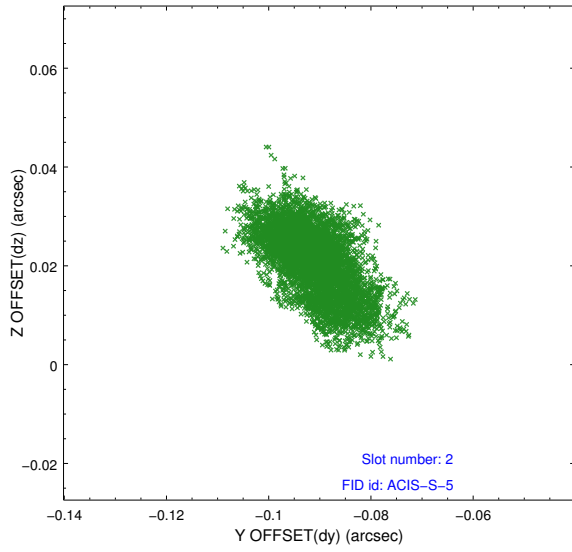
2.5.1 Slot 0



2.5.2 Slot 1



2.5.3 Slot 2



A Summary

A.1 Status

V&V Scientist	Jen Lauer
V&V Date (YYYY-MM-DD)	2012.12.12
V&V Edition	1
V&V Disposition and Status	OK
V&V Charge Time	21.708

A.2 Comments