

V&V Reference Report

L2 ASCDS Version : 8.5

Observation 4987 - L2 Version 3
Chandra X-Ray Center

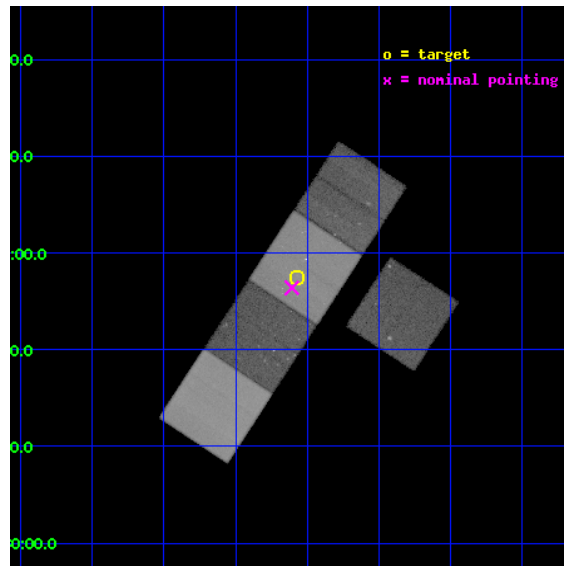
L2 Processing Date : Dec 15 2012

Contents

1	Front	2
2	OBI	3
2.1	OBI	3
2.1.1	Images	3
2.1.2	Bias	3
2.1.3	Parameters	4
2.1.4	Events	4
2.2	Compared Parameters	5
2.3	Aspect	6
2.4	Star Slots	9
2.4.1	Slot 3	9
2.4.2	Slot 4	10
2.4.3	Slot 5	11
2.4.4	Slot 6	12
2.4.5	Slot 7	13
2.5	FID Slots	14
2.5.1	Slot 0	14
2.5.2	Slot 1	15
2.5.3	Slot 2	16
A	Summary	17
A.1	Status	17
A.2	Comments	17

1 Front

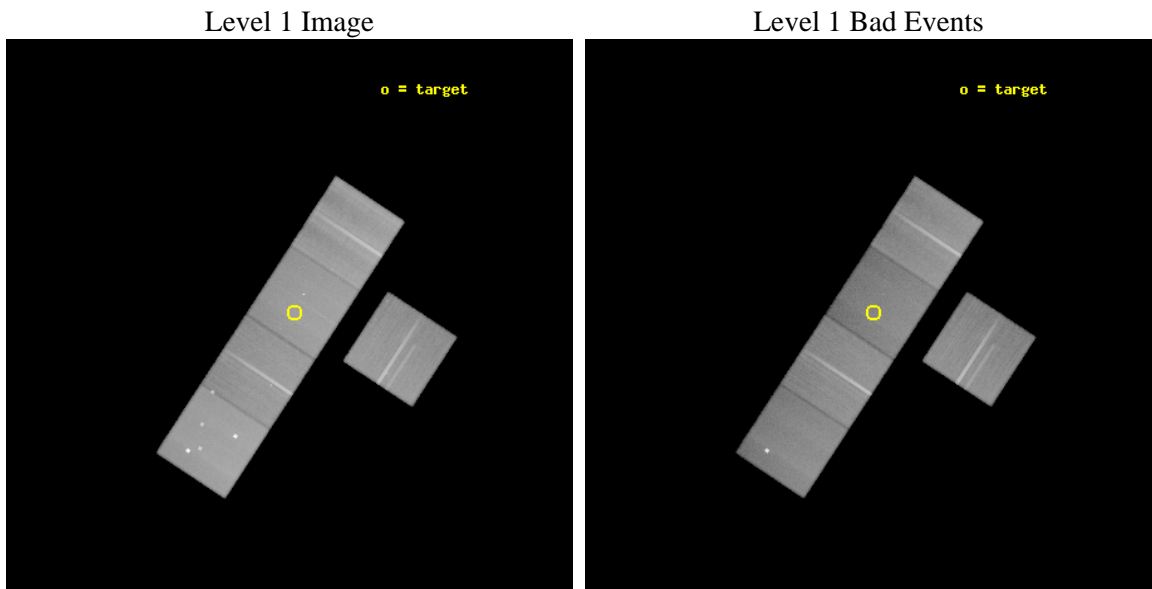
seq_num	800430	Sequence number
obs_id	4987	Observation id
title	Multiple Strong Lensing Clusters from the RCS Survey	Proposal titl
observer	Dr. Erica Ellingson	Principal investigator
object	RCS0224-0002	Source name
dtycle	0	
cycle	P	events from which exps? Prim/Second/Both
ra_targ	36.142083	Observer's specified target RA [deg]
dec_targ	-0.041917	Observer's specified target Dec [deg]
ra_nom	36.151988597363	Nominal RA [deg]
dec_nom	-0.060174883665911	Nominal Dec [deg]
roll_nom	303.25754474283	Nominal Roll [deg]
revision	3	Processing version of data
ontime	90151.099826634	Sum of GTIs [s]
lvertime	88973.209339125	Livetime [s]
ontime3	90129.112924904	Sum of GTIs [s]
ontime5	90151.099826634	Sum of GTIs [s]
ontime6	90129.112894833	Sum of GTIs [s]
ontime7	90151.099826634	Sum of GTIs [s]
ontime8	90141.676826119	Sum of GTIs [s]
l2events	795424	Number of level 2 events



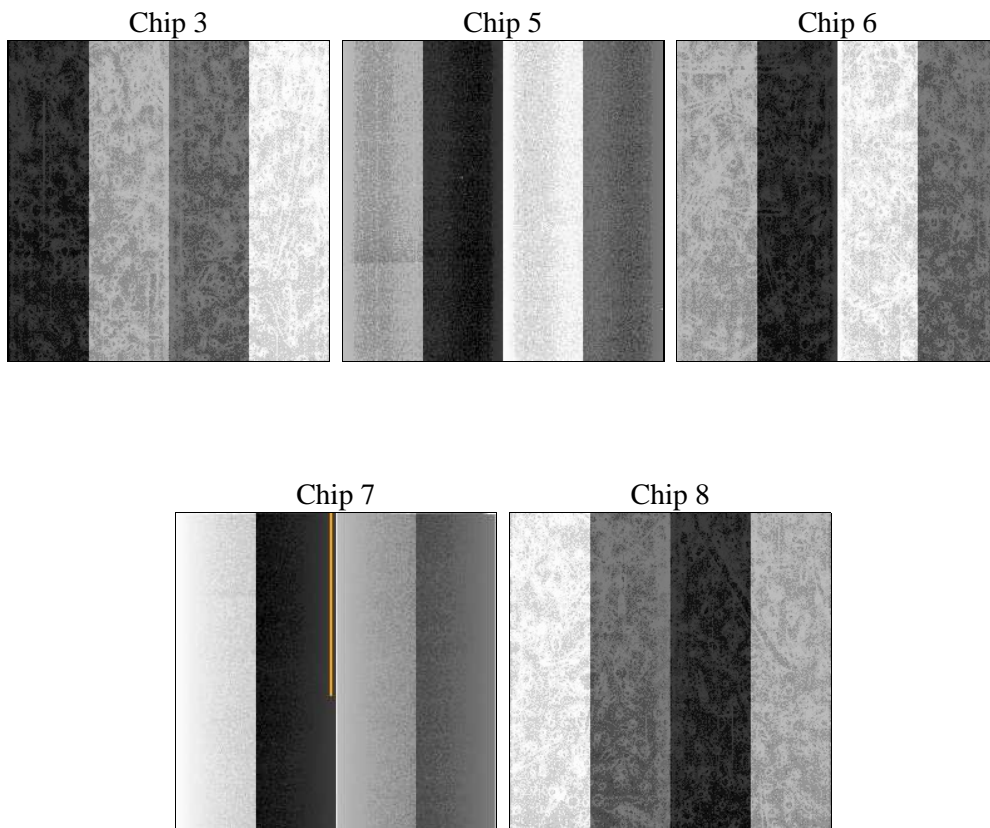
2 OBI

2.1 OBI

2.1.1 Images



2.1.2 Bias



2.1.3 Parameters

obi_num	0	Obi number	sched_exp_time	90000.000000	[s] Scheduled observation exposure time
ascdsver	8.5.0.1	Processing system revision	ontime	90151.099826634	Sum of GTIs [s]
caldbver	4.5.4	 	ontime3	90129.112924904	Sum of GTIs [s]
date	2012-12-12T18:27:20	Date and time of file creation	ontime5	90151.099826634	Sum of GTIs [s]
revision	3	Processing version of data	ontime6	90129.112894833	Sum of GTIs [s]
			ontime7	90151.099826634	Sum of GTIs [s]
			ontime8	90141.676826119	Sum of GTIs [s]
			l1events	3344293	Number of level 1 events

2.1.4 Events

	ccd 3	ccd 5	ccd 6	ccd 7	ccd 8
level 1 events	565632	818305	587204	637388	735764
rejected events	513203	406863	527087	348249	565035
rejected %	90%	49%	89%	54%	76%

	ccd 3	ccd 5	ccd 6	ccd 7	ccd 8
grade 0 events	18257	59973	21334	27352	52108
	3%	7%	3%	4%	7%
grade 1 events	274	993	286	623	535
	0%	0%	0%	0%	0%
grade 2 events	11375	119246	12877	58790	37903
	2%	14%	2%	9%	5%
grade 3 events	6112	17385	6697	27737	18876
	1%	2%	1%	4%	2%
grade 4 events	6338	16856	6686	27581	17526
	1%	2%	1%	4%	2%
grade 5 events	22018	67177	23294	67467	32978
	3%	8%	3%	10%	4%
grade 6 events	10473	199014	12660	148442	44770
	1%	24%	2%	23%	6%
grade 7 events	490785	337661	503370	279396	531068
	86%	41%	85%	43%	72%

2.2 Compared Parameters

Parameter	Planned	Actual	Parameter	Planned	Actual
Instrument	ACIS	ACIS	Obspar format version number	7	7
Detector	ACIS-35678	ACIS-35678	Obspar file type	PREDICTED	ACTUAL
Grating	NONE	NONE	Obspar update status	NONE	UPDATED
Data mode	VFAINT	VFAINT	Number of optional ACIS chips dropped	0	0
Observation mode	POINTING	POINTING	On-chip summing requested	N	N
[deg] Pointing RA	36.127497	36.151988597363	Subarray requested	NONE	NONE
[deg] Pointing Dec	-0.048243	-0.0601748836659113	Alternating exposures requested	N	N
[deg] Pointing Roll	303.100888	303.257544742834	[s] Primary exposure time	0.000000	3.1
[mm] SIM focus pos	-0.684267	-0.6828225247311905			
[mm] SIM defocus	0	0.001444936568705701			
[mm] SIM translation stage pos	-190.132523	-190.1400660498719			
[mm] SIM translation stage offset	0	0.00754346686406393			
[s] Observation start time (MET)	218980390.184000	218979291.58689			
Observation start date	2004-12-09T11:52:06	2004-12-09T11:34:51			
[s] Observation end time (MET)	219070390.184000	219071746.59105			
Observation end date	2004-12-10T12:52:06	2004-12-10T13:15:46			
Read mode	TIMED	TIMED			

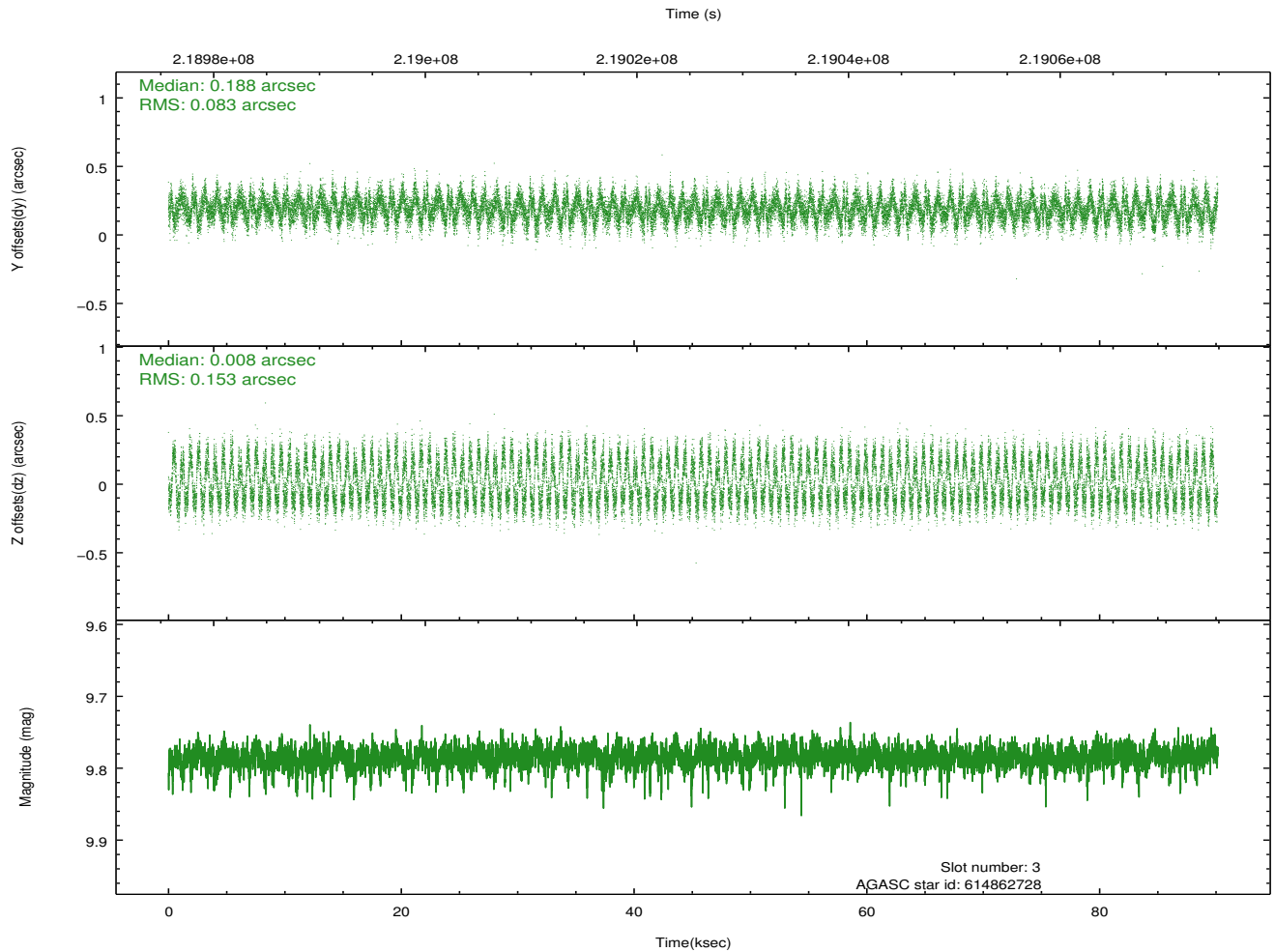
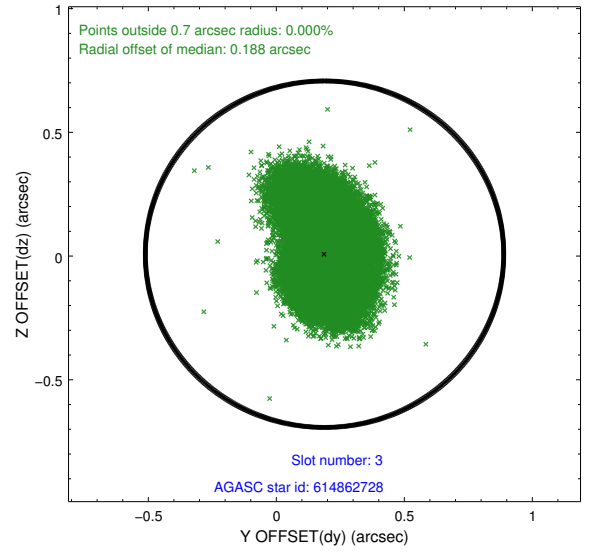
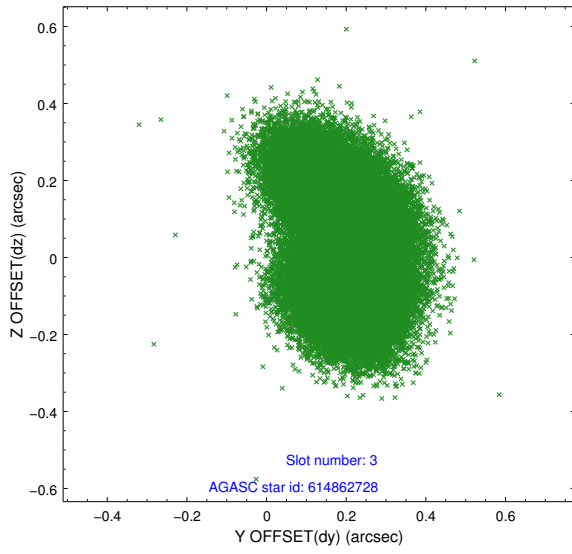
2.3 Aspect

Slot Statistics

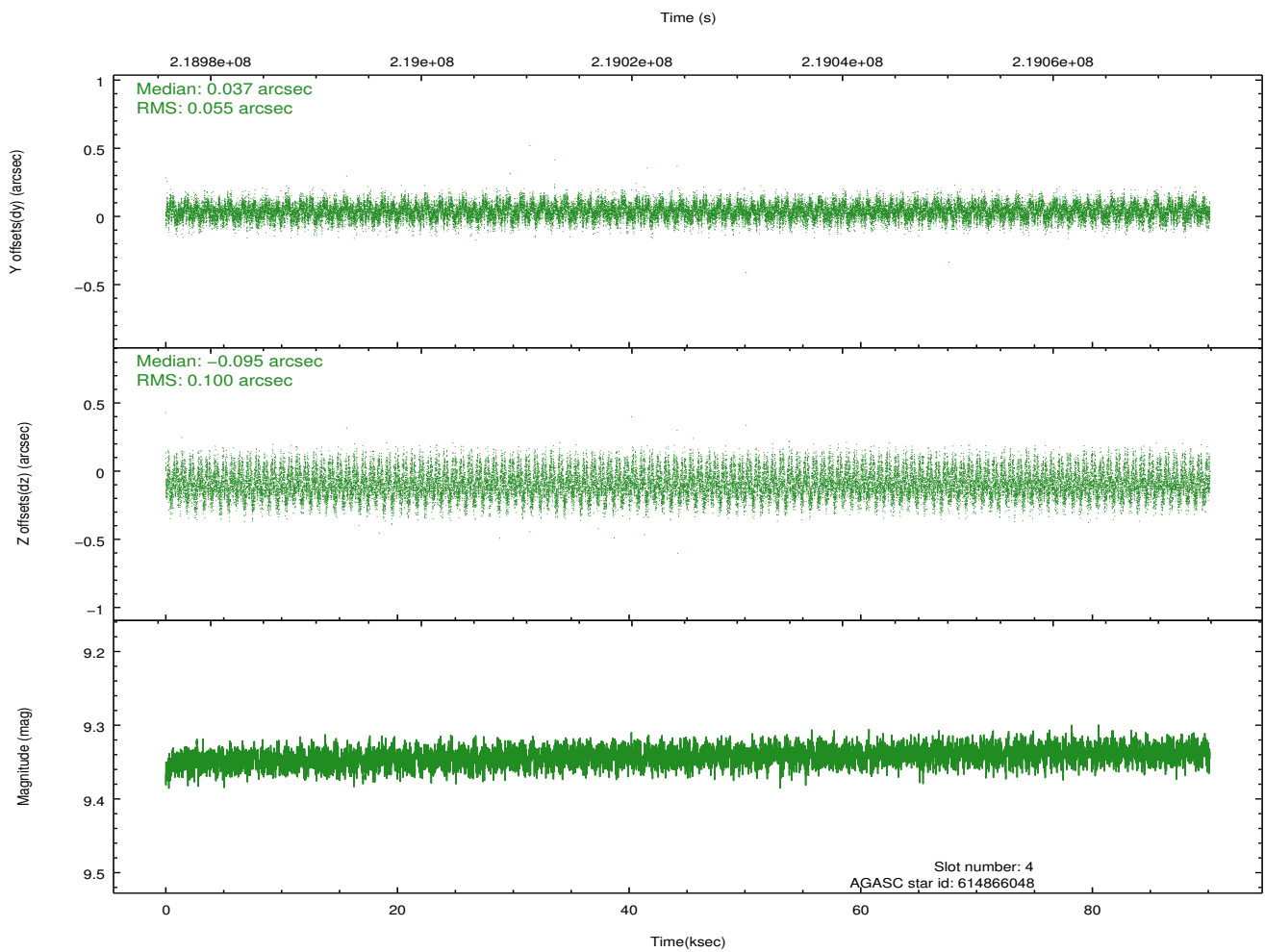
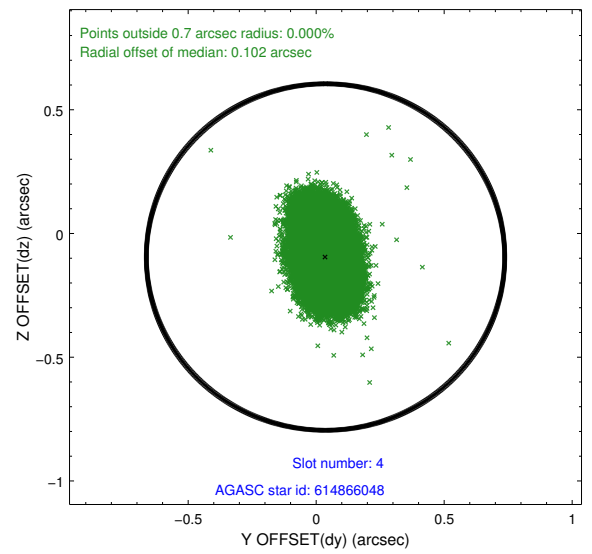
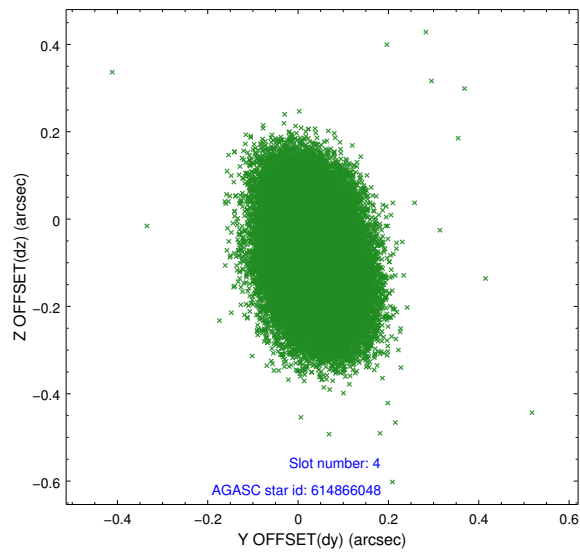
slot	status	id	mag	n_pts	med_dy	med_dz	dr1	dr2	ra	dec	mean_y	mean_z
0	FID	ACIS-S-2	7.11	21989	-0.007	-0.025	0.010	0.016	0.000000	0.000000	-760.74	-1731.58
1	FID	ACIS-S-5	7.24	21989	-0.066	0.003	0.017	0.032	0.000000	0.000000	-1813.92	170.48
2	FID	ACIS-S-6	7.35	21989	0.047	0.030	0.014	0.027	0.000000	0.000000	400.95	814.38
3	GUIDE	614862728	9.78	43933	0.188	0.008	0.187	0.287	35.909838	-0.641014	1360.70	-1821.34
4	GUIDE	614866048	9.34	43945	0.037	-0.095	0.121	0.202	35.542724	-0.257167	-518.84	-2174.08
5	GUIDE	614866304	8.61	43898	0.040	0.023	0.075	0.117	35.871551	-0.547495	1003.06	-1752.98
6	GUIDE	614866712	7.22	43975	-0.141	-0.095	0.060	0.094	35.418483	-0.148629	-1090.73	-2335.62
7	GUIDE	5120184	8.87	43955	-0.123	0.140	0.072	0.118	35.687918	0.425094	-2291.39	-395.02

2.4 Star Slots

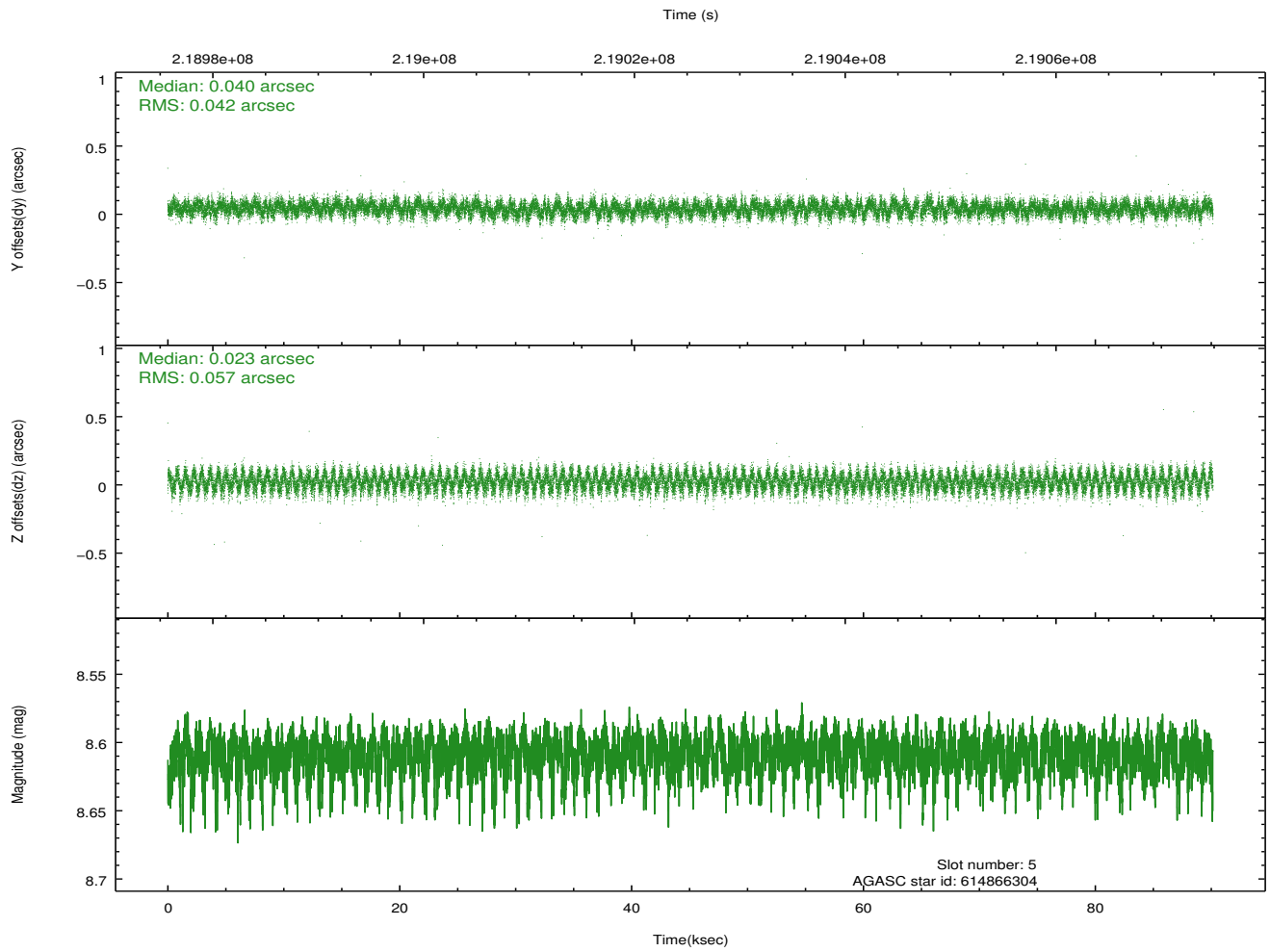
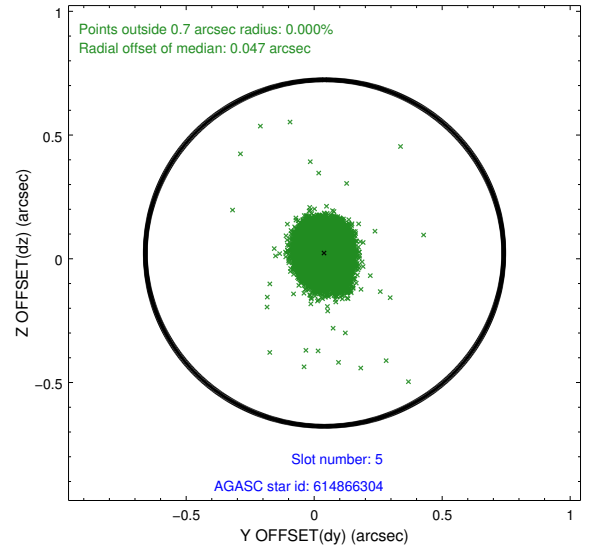
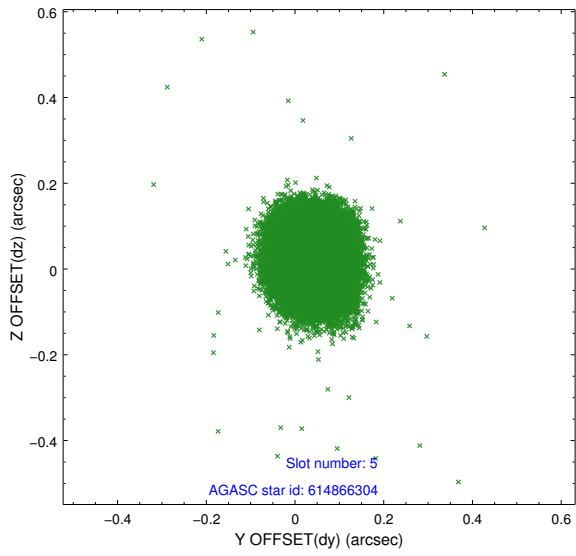
2.4.1 Slot 3



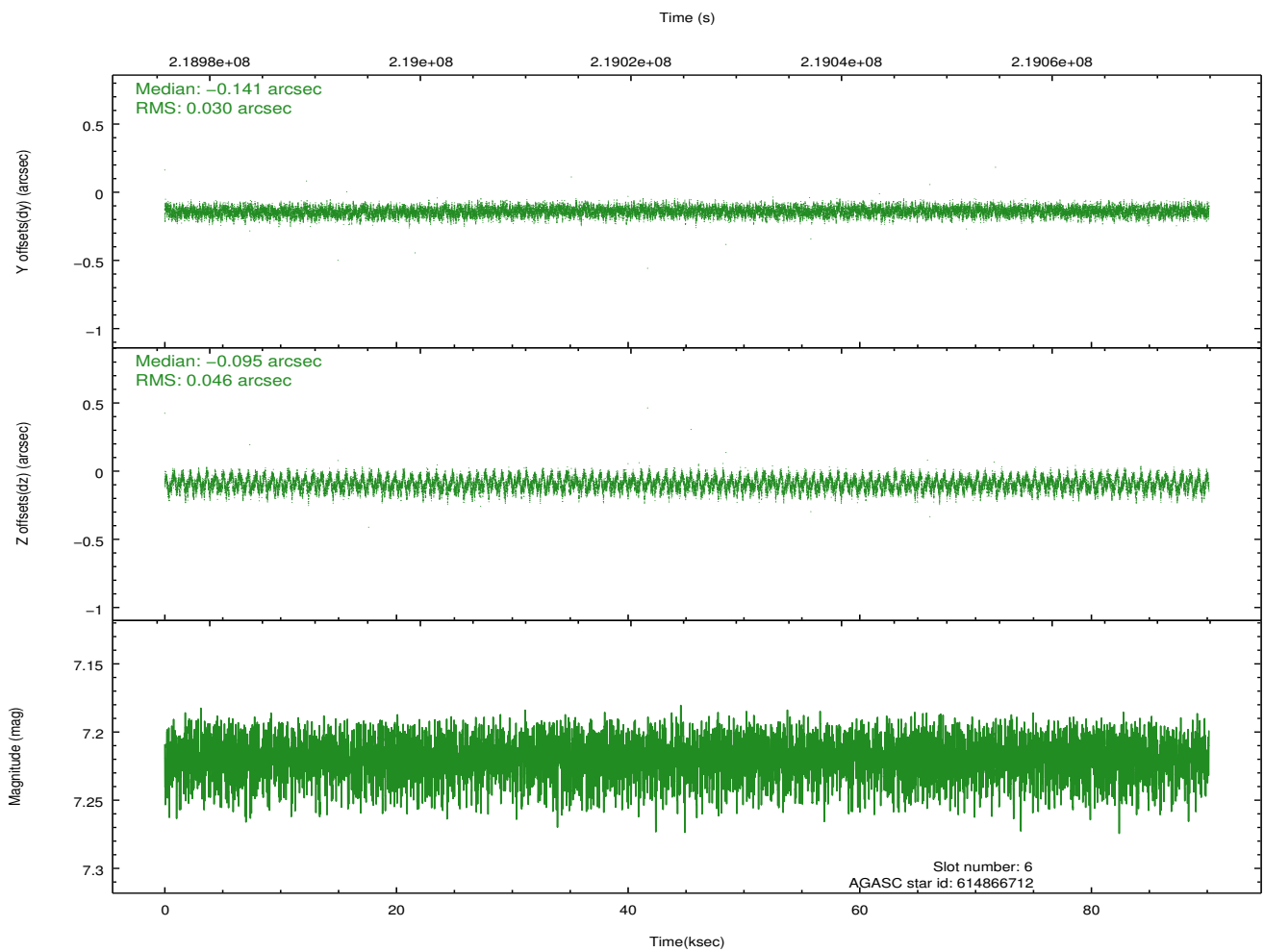
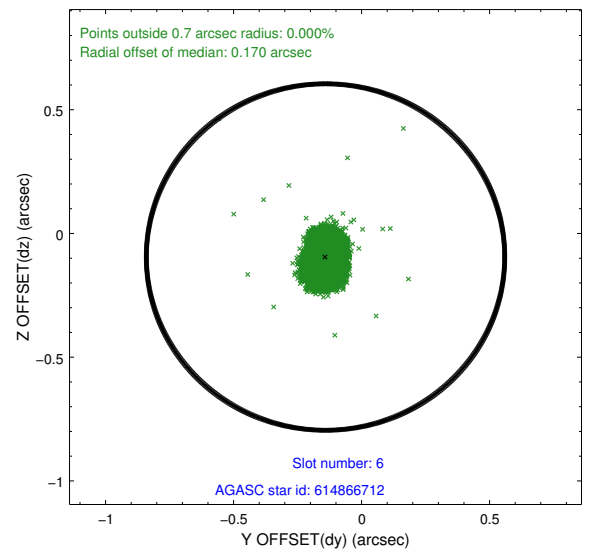
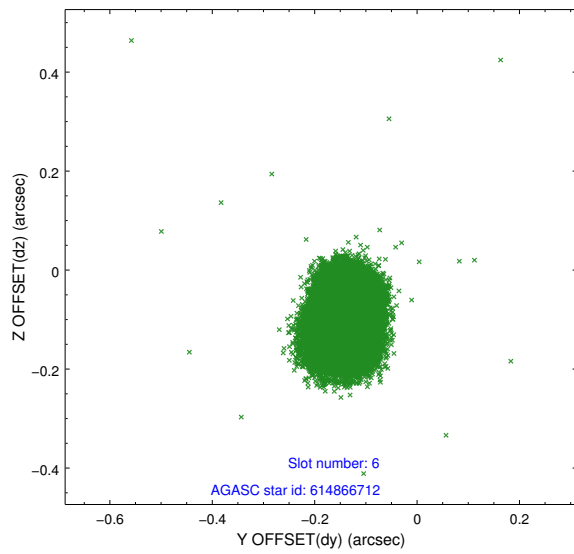
2.4.2 Slot 4



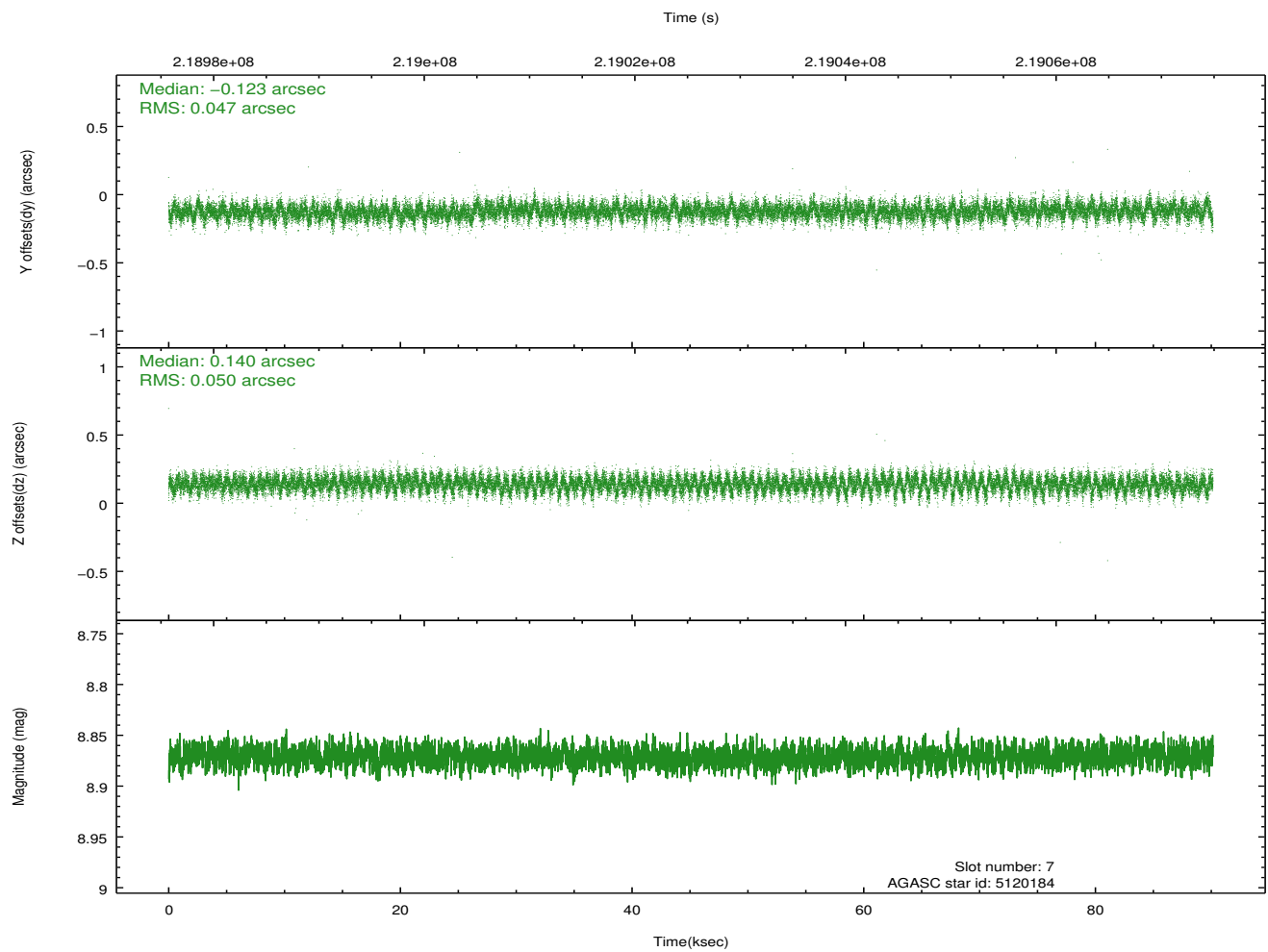
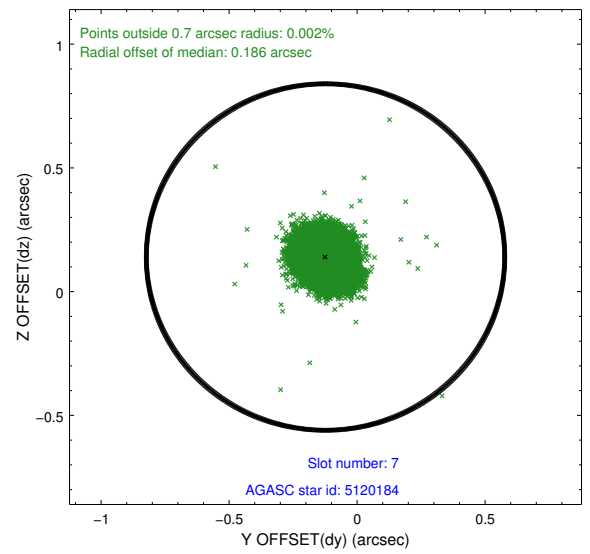
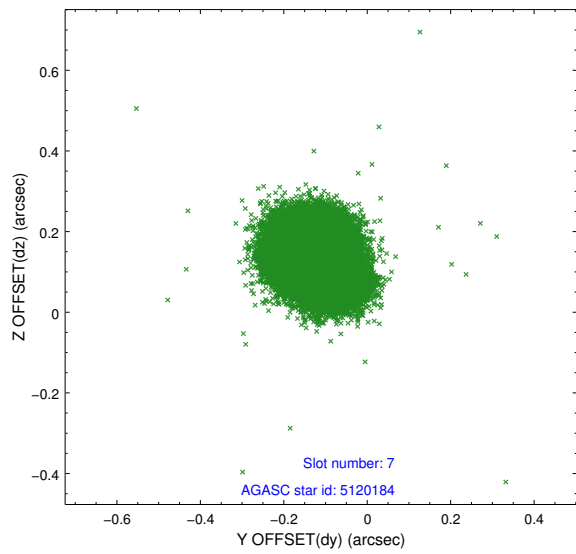
2.4.3 Slot 5



2.4.4 Slot 6

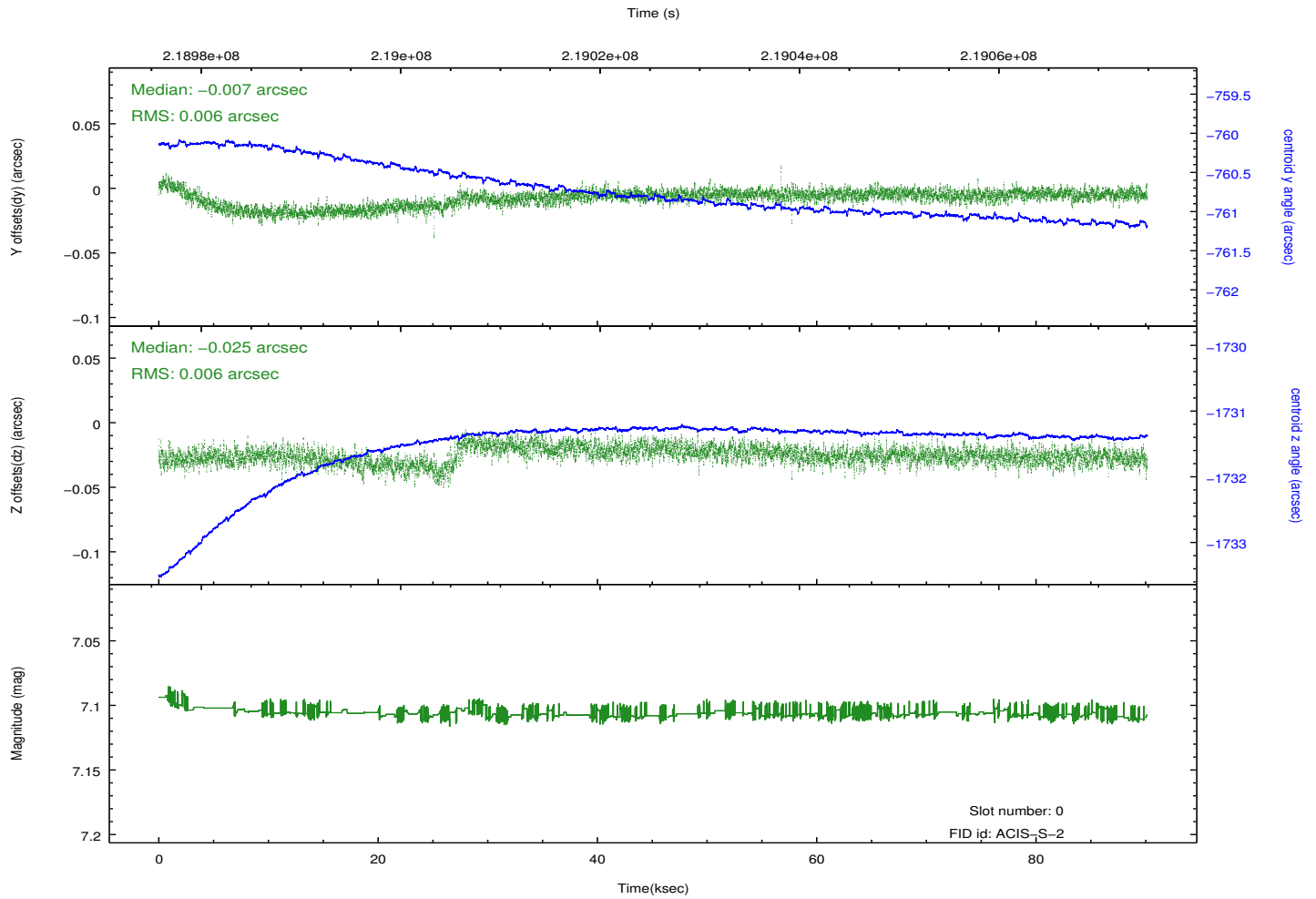
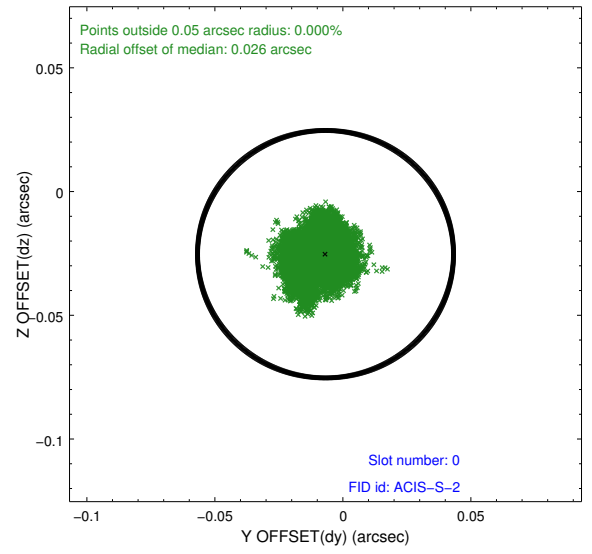
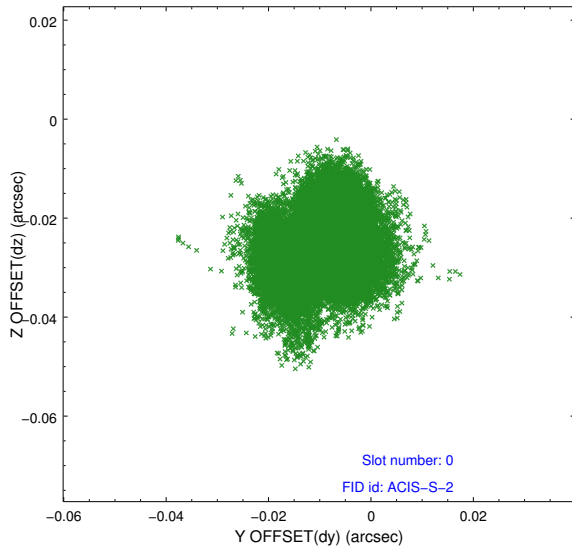


2.4.5 Slot 7

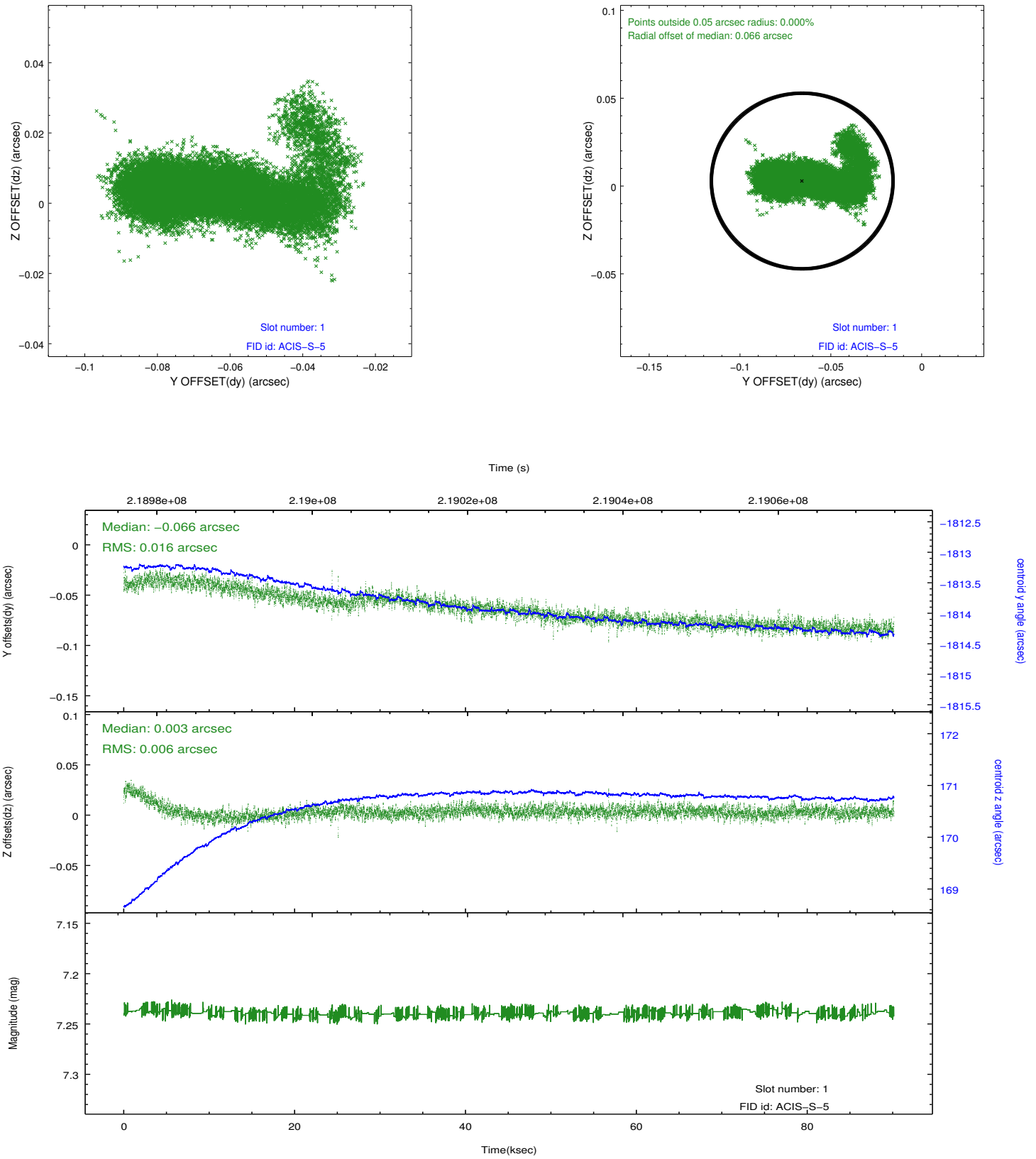


2.5 FID Slots

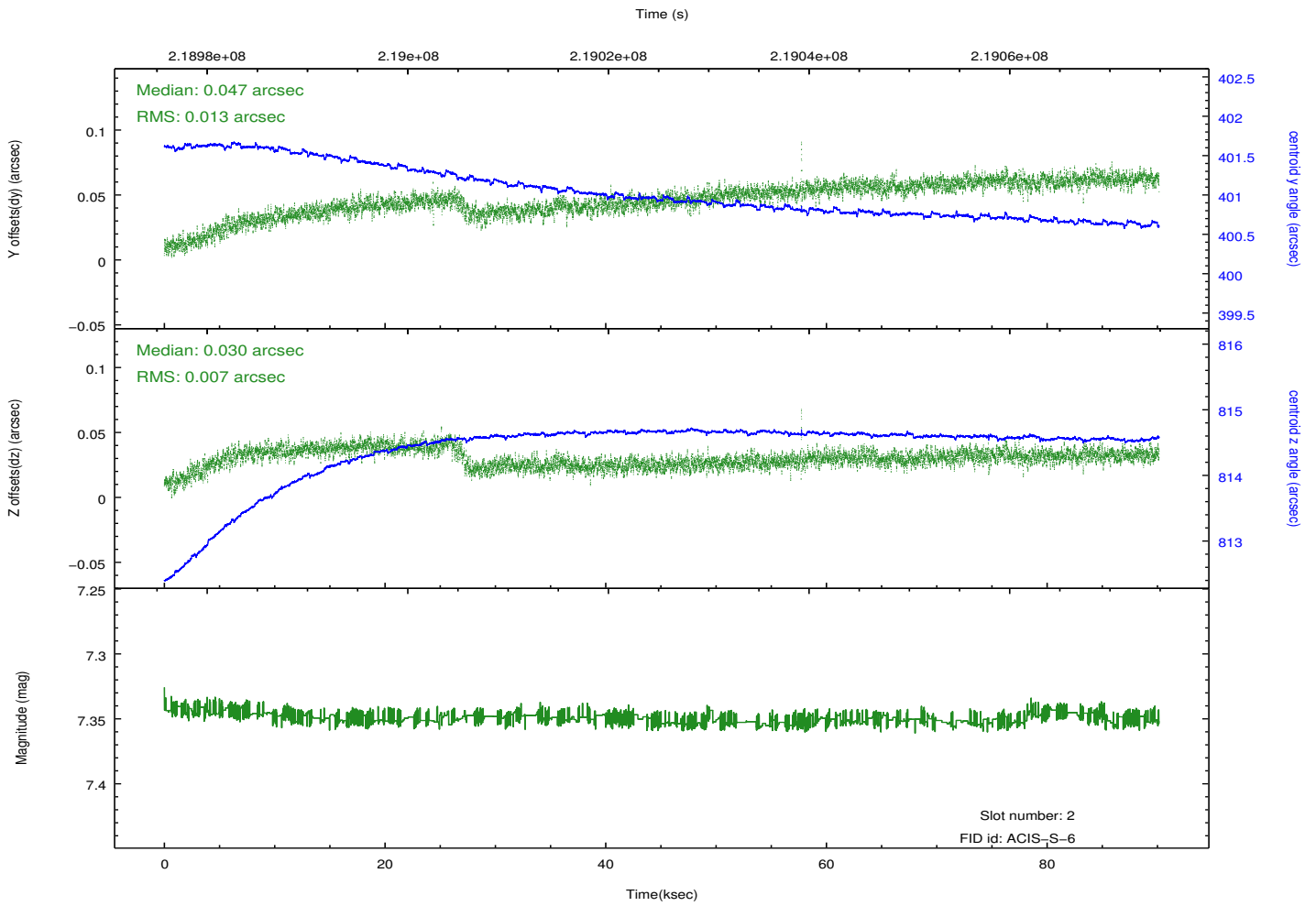
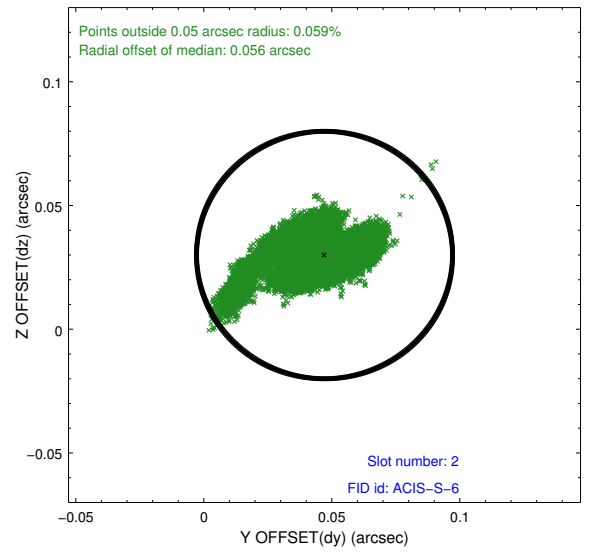
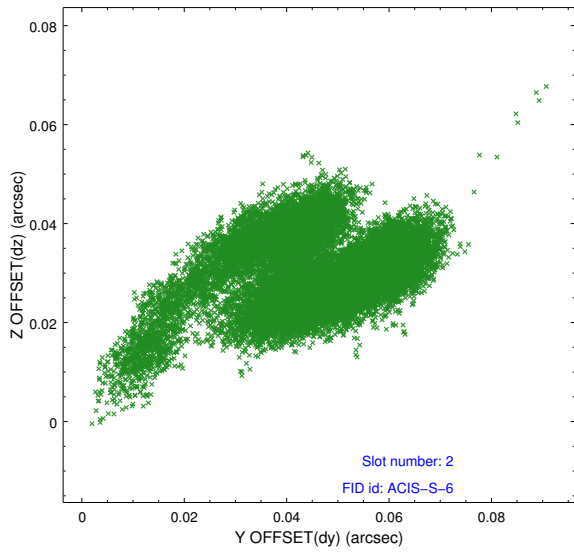
2.5.1 Slot 0



2.5.2 Slot 1



2.5.3 Slot 2



A Summary

A.1 Status

V&V Scientist	Beth Sundheim
V&V Date (YYYY-MM-DD)	2013.01.07
V&V Edition	1
V&V Disposition and Status	OK
V&V Charge Time	90.15109

A.2 Comments