

V&V Reference Report

L2 ASCDS Version : 8.4.5

Observation 4997 - L2 Version 3
Chandra X-Ray Center

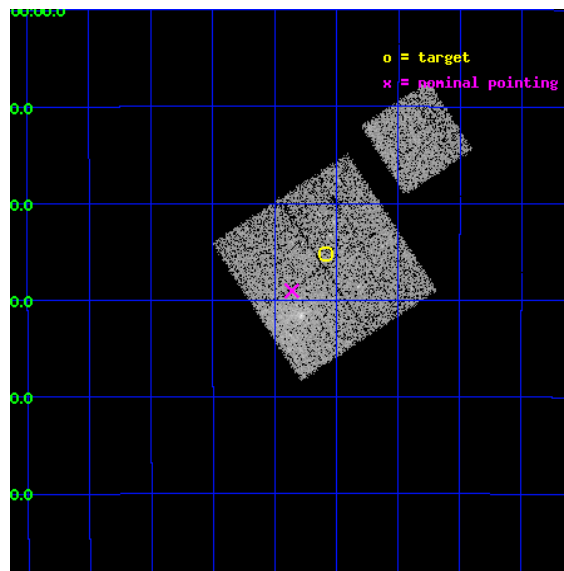
L2 Processing Date : Nov 11 2012

Contents

1	Front	2
2	OBI	3
2.1	OBI	3
2.1.1	Images	3
2.1.2	Bias	3
2.1.3	Parameters	4
2.1.4	Events	4
2.2	Compared Parameters	5
2.3	Aspect	6
2.4	Star Slots	9
2.4.1	Slot 3	9
2.4.2	Slot 4	10
2.4.3	Slot 5	11
2.4.4	Slot 6	12
2.4.5	Slot 7	13
2.5	FID Slots	14
2.5.1	Slot 0	14
2.5.2	Slot 1	15
2.5.3	Slot 2	16
A	Summary	17
A.1	Status	17
A.2	Comments	17

1 Front

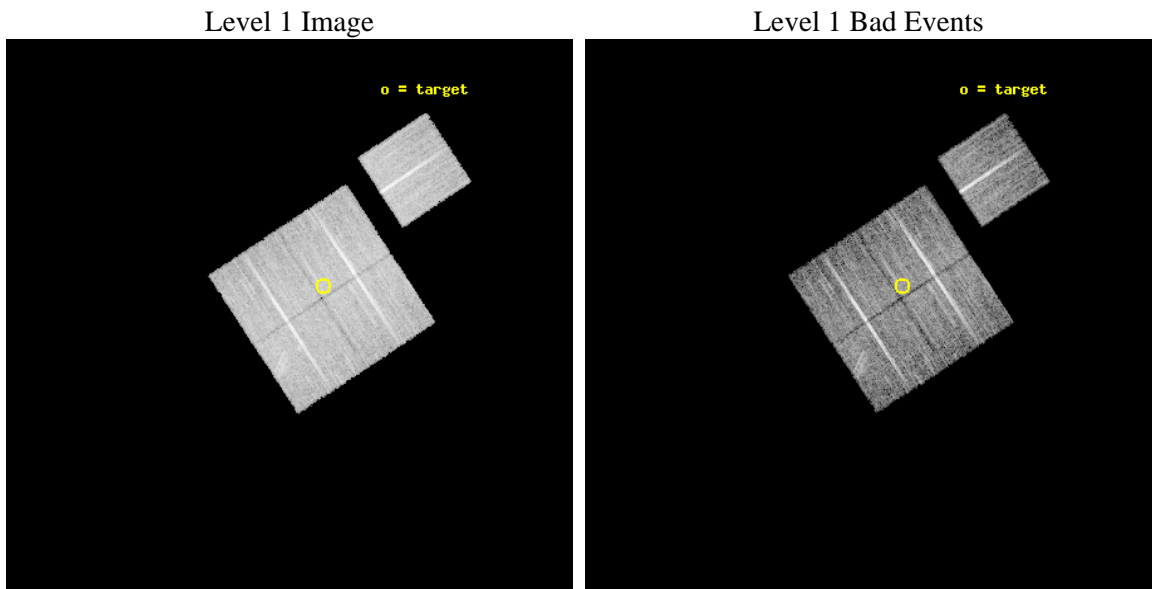
seq_num	800440	Sequence number
obs_id	4997	Observation id
title	Study of Candidate Fossil Groups	Proposal title
observer	Dr. Stephen Murray	Principal investigator
object	NGC4936-offset1	Source name
dtcycle	0	
cycle	P	events from which exps? Prim/Second/Both
ra_targ	196.020833	Observer's specified target RA [deg]
dec_targ	-30.419889	Observer's specified target Dec [deg]
ra_nom	196.08985944469	Nominal RA [deg]
dec_nom	-30.484176666633	Nominal Dec [deg]
roll_nom	56.685843067681	Nominal Roll [deg]
revision	3	Processing version of data
ontime	14151.499972761	Sum of GTIs [s]
liveltime	13966.600207434	Livetime [s]
ontime0	14145.218032241	Sum of GTIs [s]
ontime1	14142.076922596	Sum of GTIs [s]
ontime2	14151.499972761	Sum of GTIs [s]
ontime3	14151.499972761	Sum of GTIs [s]
ontime6	14148.359002531	Sum of GTIs [s]
l2events	36739	Number of level 2 events



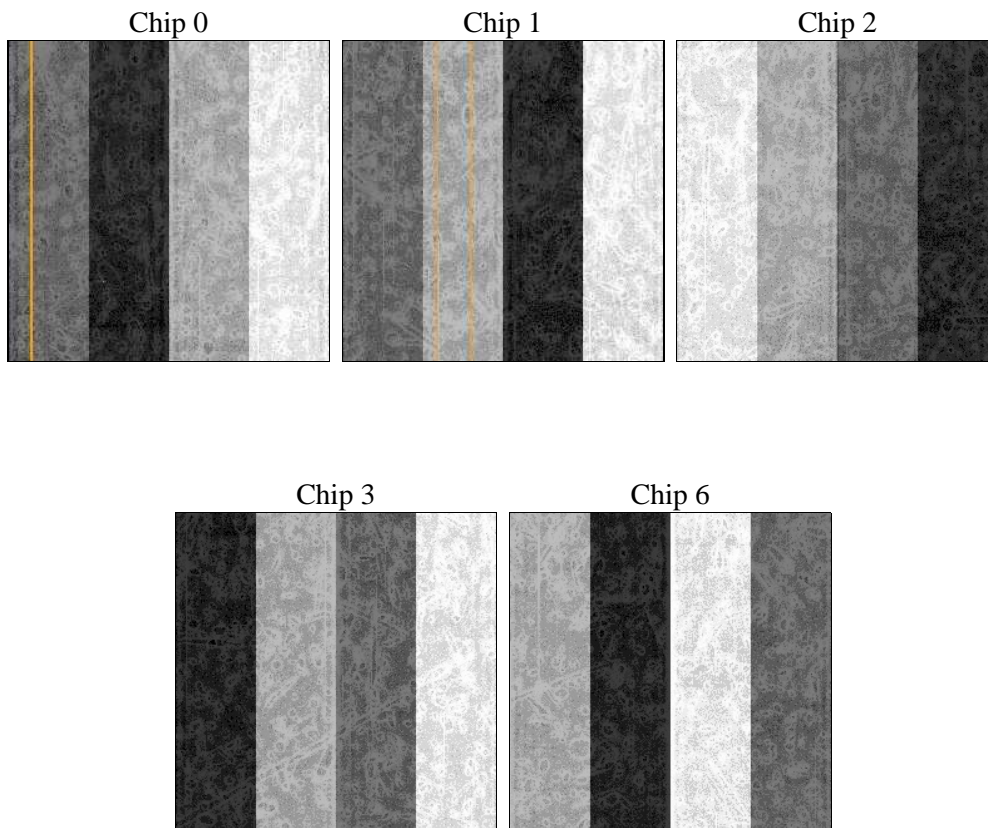
2 OBI

2.1 OBI

2.1.1 Images



2.1.2 Bias



2.1.3 Parameters

obi_num	0	Obi number	sched_exp_time	14000.000000	[s] Scheduled observation exposure time
ascdsver	8.4.5	Processing system revision	ontime	14151.499972761	Sum of GTIs [s]
caldbver	4.5.2	 	ontime0	14145.218032241	Sum of GTIs [s]
date	2012-11-11T16:59:50	Date and time of file creation	ontime1	14142.076922596	Sum of GTIs [s]
revision	3	Processing version of data	ontime2	14151.499972761	Sum of GTIs [s]
			ontime3	14151.499972761	Sum of GTIs [s]
			ontime6	14148.359002531	Sum of GTIs [s]
			l1events	386022	Number of level 1 events

2.1.4 Events

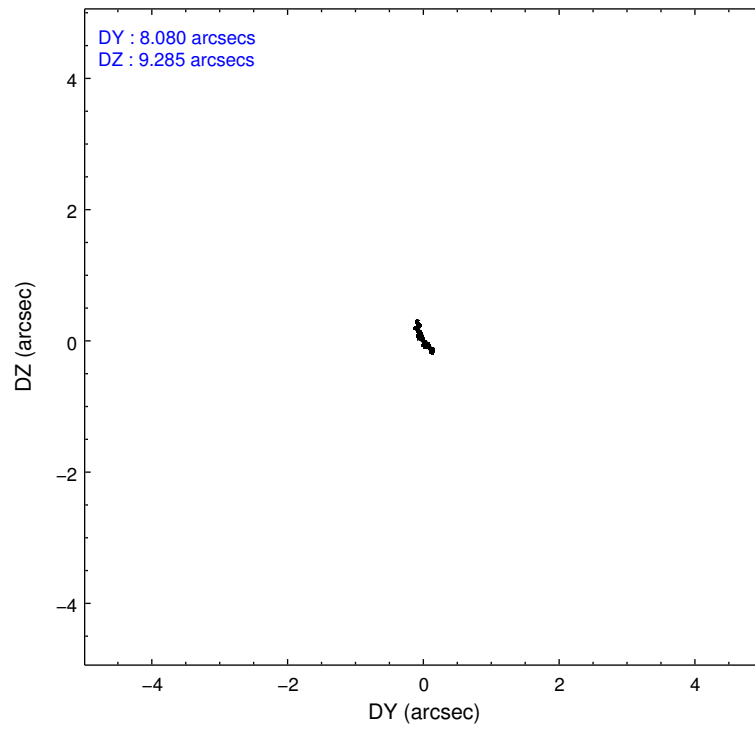
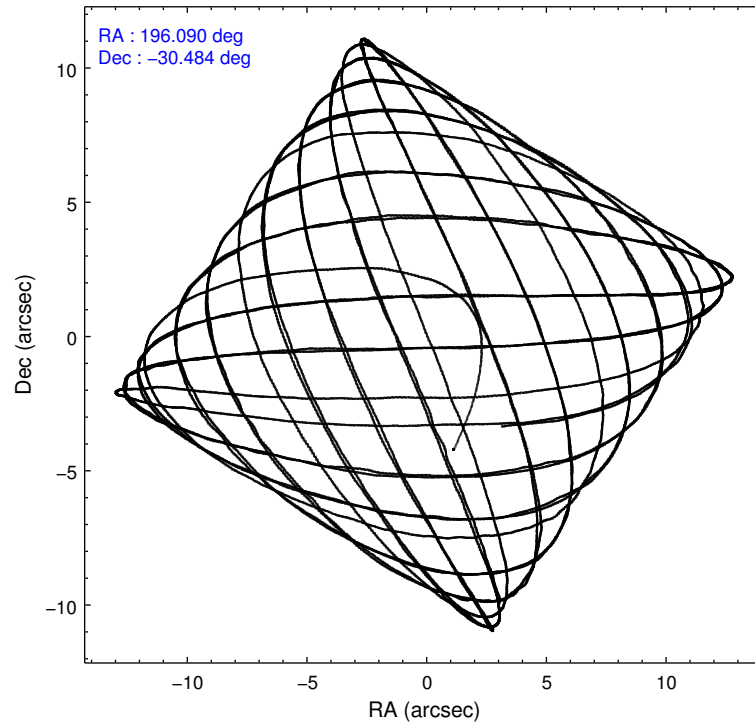
	ccd 0	ccd 1	ccd 2	ccd 3	ccd 6
level 1 events	72593	76727	80661	77235	78806
rejected events	64186	65023	72713	69572	70891
rejected %	88%	84%	90%	90%	89%

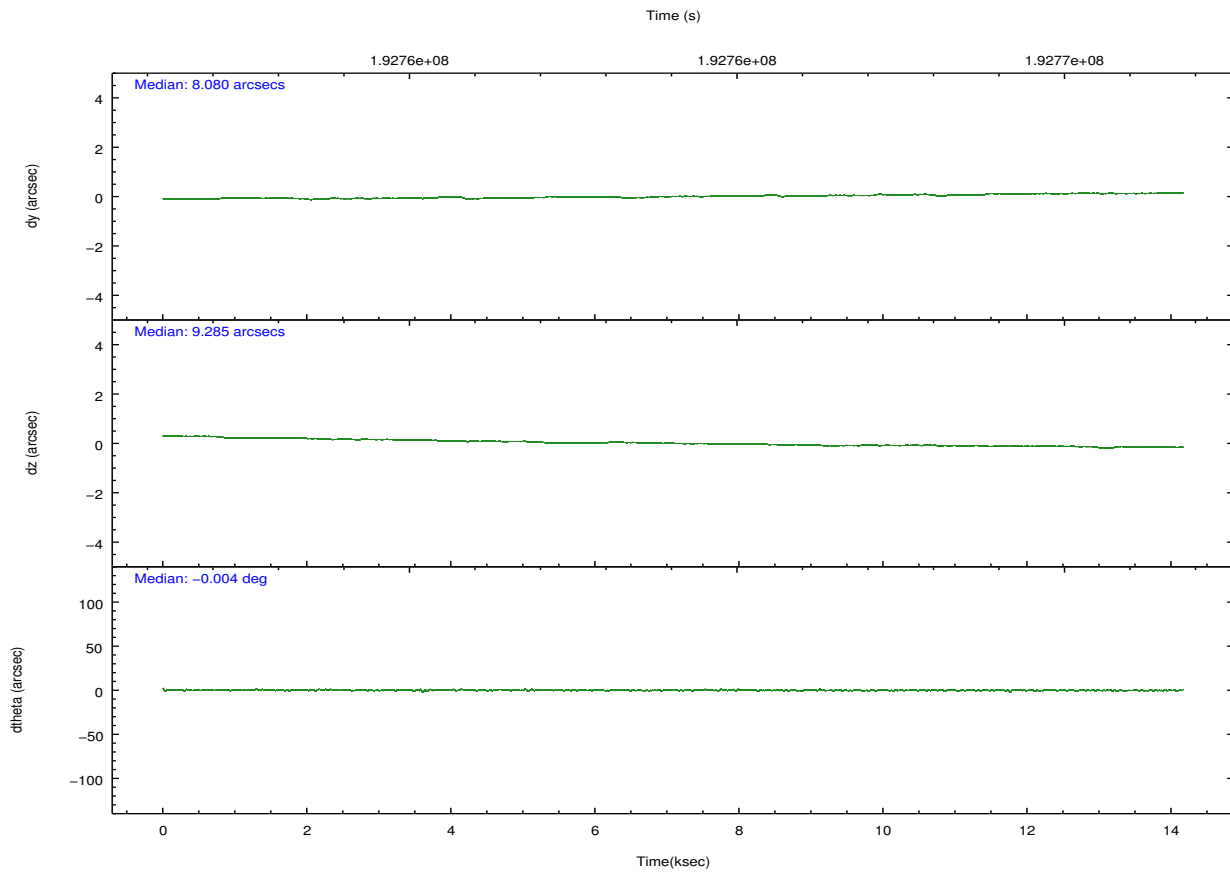
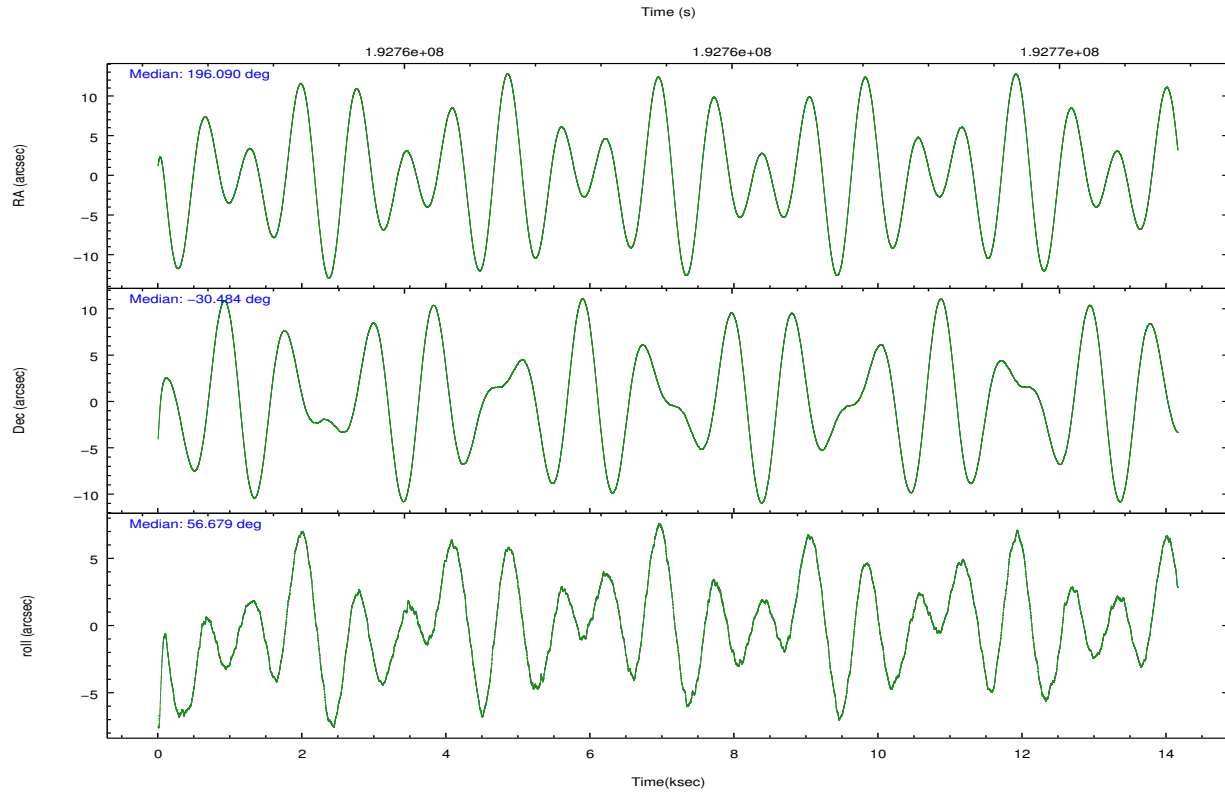
	ccd 0	ccd 1	ccd 2	ccd 3	ccd 6
grade 0 events	3323	6018	3150	3010	2840
	4%	7%	3%	3%	3%
grade 1 events	47	35	38	39	38
	0%	0%	0%	0%	0%
grade 2 events	1841	2127	1796	1610	1716
	2%	2%	2%	2%	2%
grade 3 events	937	1009	854	841	946
	1%	1%	1%	1%	1%
grade 4 events	886	978	858	826	832
	1%	1%	1%	1%	1%
grade 5 events	2765	2913	2624	3079	2982
	3%	3%	3%	3%	3%
grade 6 events	1504	1708	1372	1447	1674
	2%	2%	1%	1%	2%
grade 7 events	61290	61939	69969	66383	67778
	84%	80%	86%	85%	86%

2.2 Compared Parameters

Parameter	Planned	Actual	Parameter	Planned	Actual
Instrument	ACIS	ACIS	Obspar format version number	7	7
Detector	ACIS-01236	ACIS-01236	Obspar file type	PREDICTED	ACTUAL
Grating	NONE	NONE	Obspar update status	NONE	UPDATED
Data mode	VFAINT	VFAINT	Number of optional ACIS chips dropped	0	0
Observation mode	POINTING	POINTING	On-chip summing requested	N	N
[deg] Pointing RA	196.088146	196.0898594446859	Subarray requested	NONE	NONE
[deg] Pointing Dec	-30.511542	-30.48417666663268	Alternating exposures requested	N	N
[deg] Pointing Roll	56.476299	56.68584306768131	[s] Primary exposure time	0.000000	3.1
[mm] SIM focus pos	-0.782348	-0.7809083437167272			
[mm] SIM defocus	0	0.001439871863259334			
[mm] SIM translation stage pos	-247.592463	-247.5871420599148			
[mm] SIM translation stage offset	14	13.9946890569851			
[s] Observation start time (MET)	192757110.184000	192756066.0861			
Observation start date	2004-02-09T23:37:26	2004-02-09T23:21:06			
[s] Observation end time (MET)	192771110.184000	192771702.97428			
Observation end date	2004-02-10T03:30:46	2004-02-10T03:41:42			
Read mode	TIMED	TIMED			

2.3 Aspect



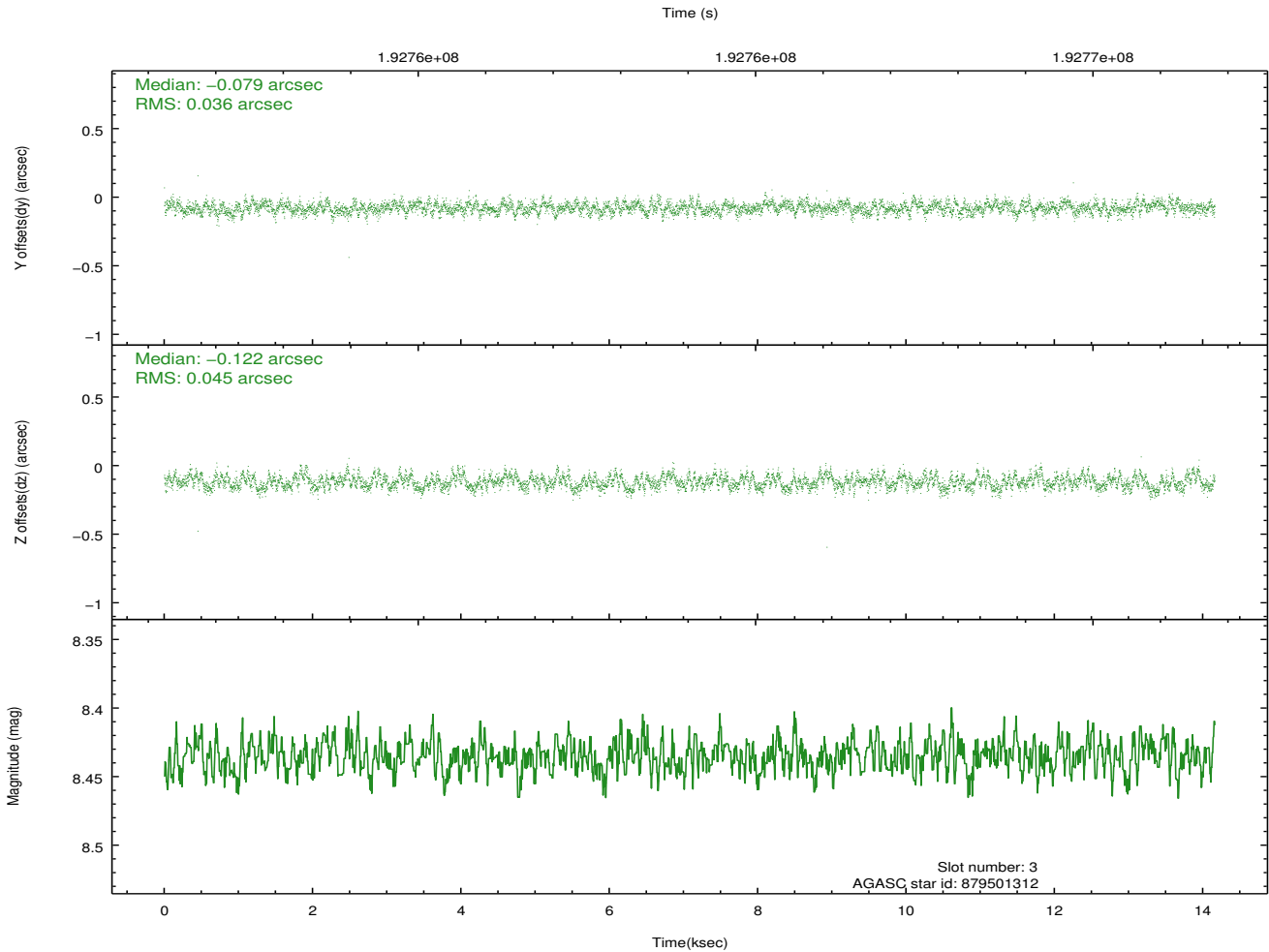
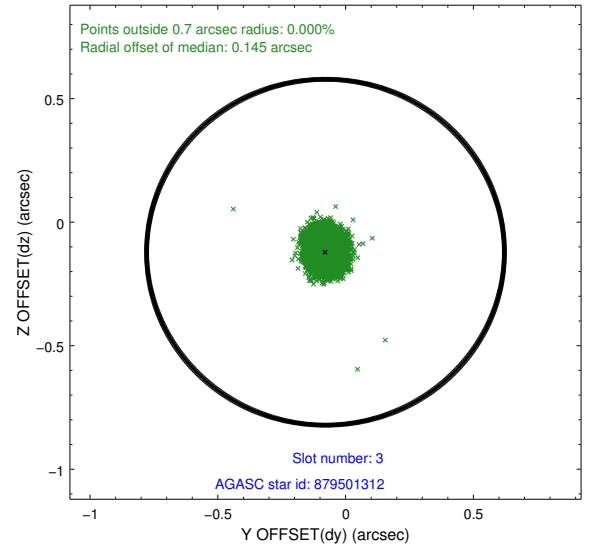
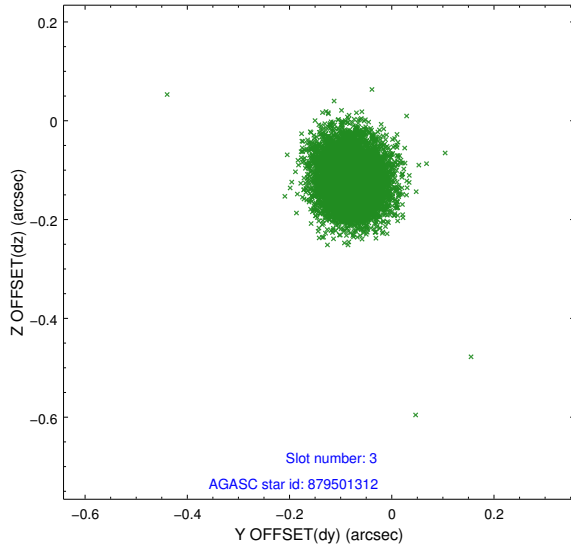


Slot Statistics

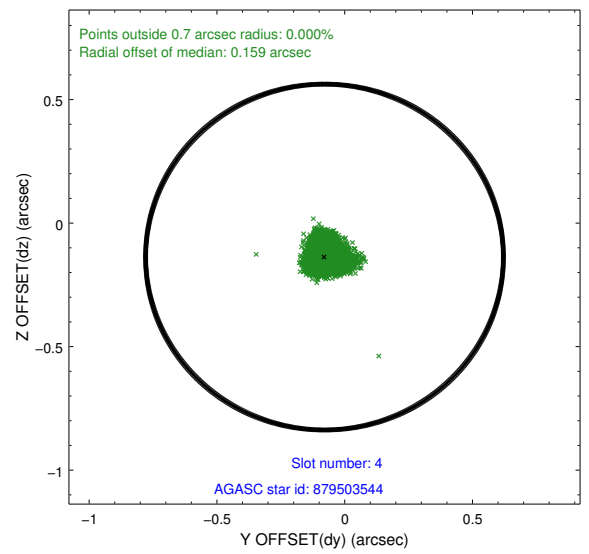
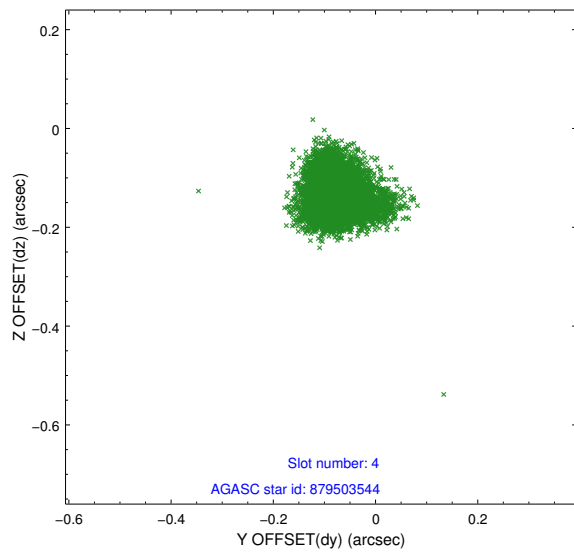
slot	status	id	mag	n_pts	med_dy	med_dz	dr1	dr2	ra	dec	mean_y	mean_z
0	FID	ACIS-I-1	7.31	3454	-0.050	0.146	0.007	0.012	0.000000	0.000000	931.80	-544.99
1	FID	ACIS-I-5	7.23	3454	-0.070	0.020	0.006	0.011	0.000000	0.000000	-1816.22	1352.17
2	FID	ACIS-I-6	7.23	3454	0.029	-0.096	0.007	0.011	0.000000	0.000000	396.96	1997.01
3	GUIDE	879501312	8.44	6908	-0.079	-0.122	0.061	0.098	195.864202	-29.858892	1571.76	1880.21
4	GUIDE	879503544	7.63	6909	-0.079	-0.137	0.054	0.090	195.842592	-29.663414	2120.28	2327.12
5	GUIDE	950143512	7.85	6909	0.017	-0.011	0.051	0.081	195.697444	-30.338755	-153.36	1354.66
6	GUIDE	950144048	9.41	6905	0.227	-0.036	0.091	0.143	195.661768	-30.639985	-1116.75	844.25
7	GUIDE	950272152	7.93	6908	-0.090	0.302	0.076	0.119	196.912603	-30.434929	1635.58	-1985.75

2.4 Star Slots

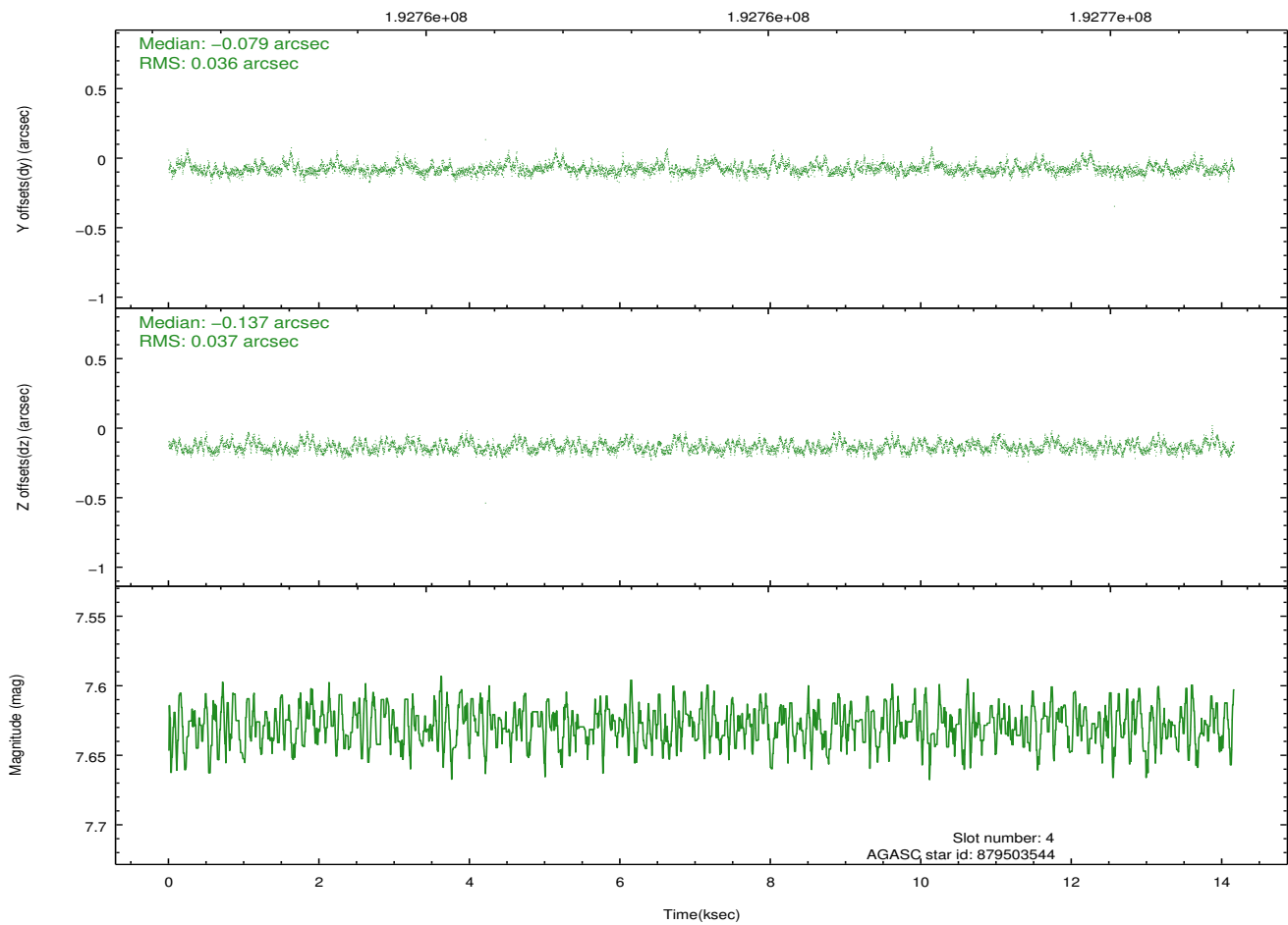
2.4.1 Slot 3



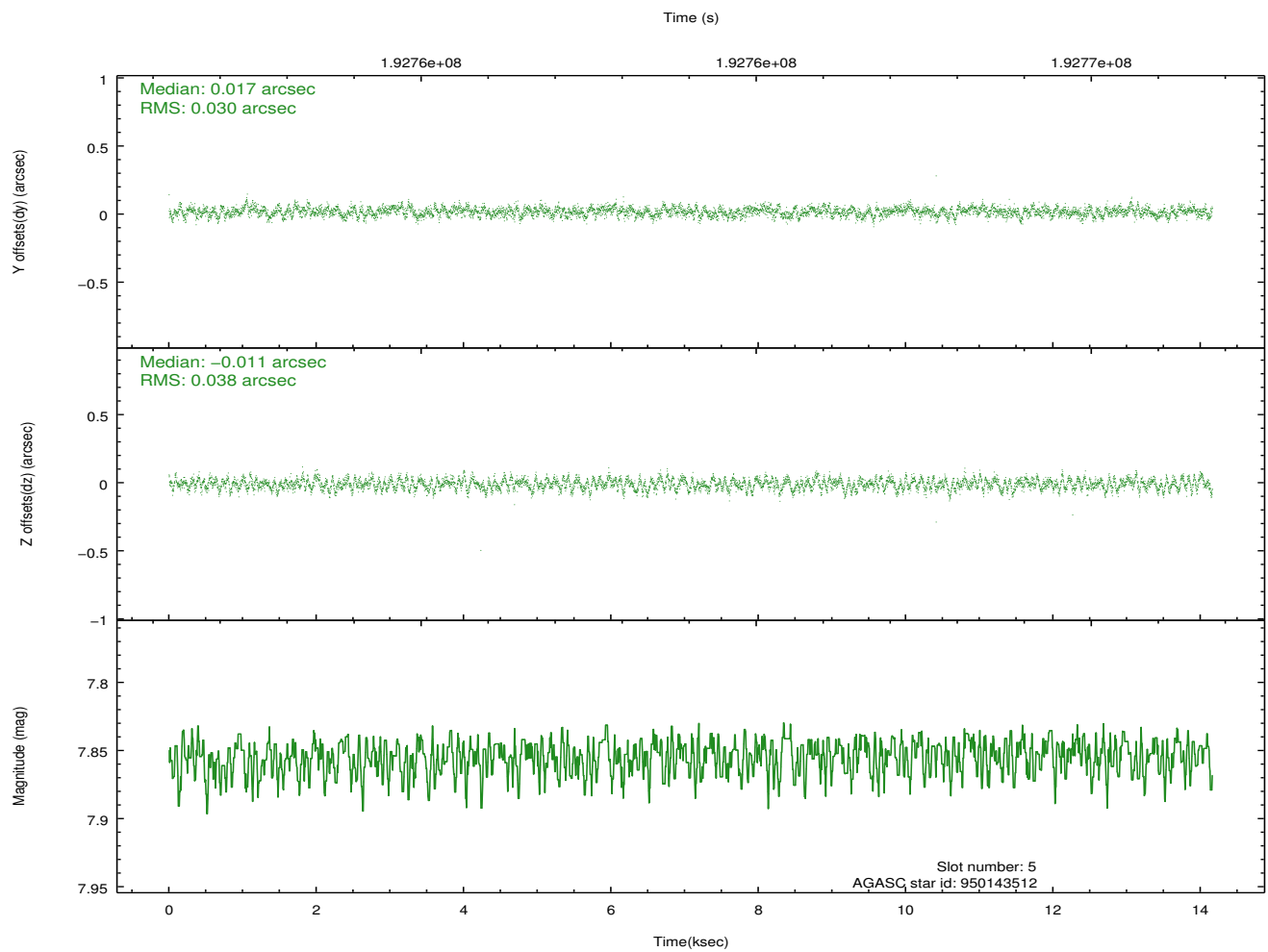
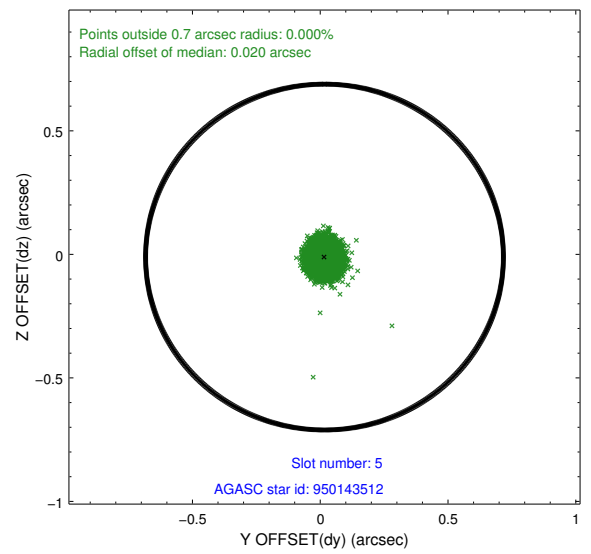
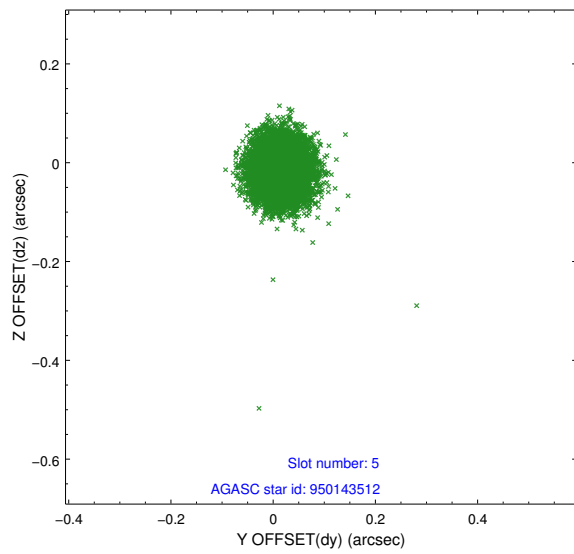
2.4.2 Slot 4



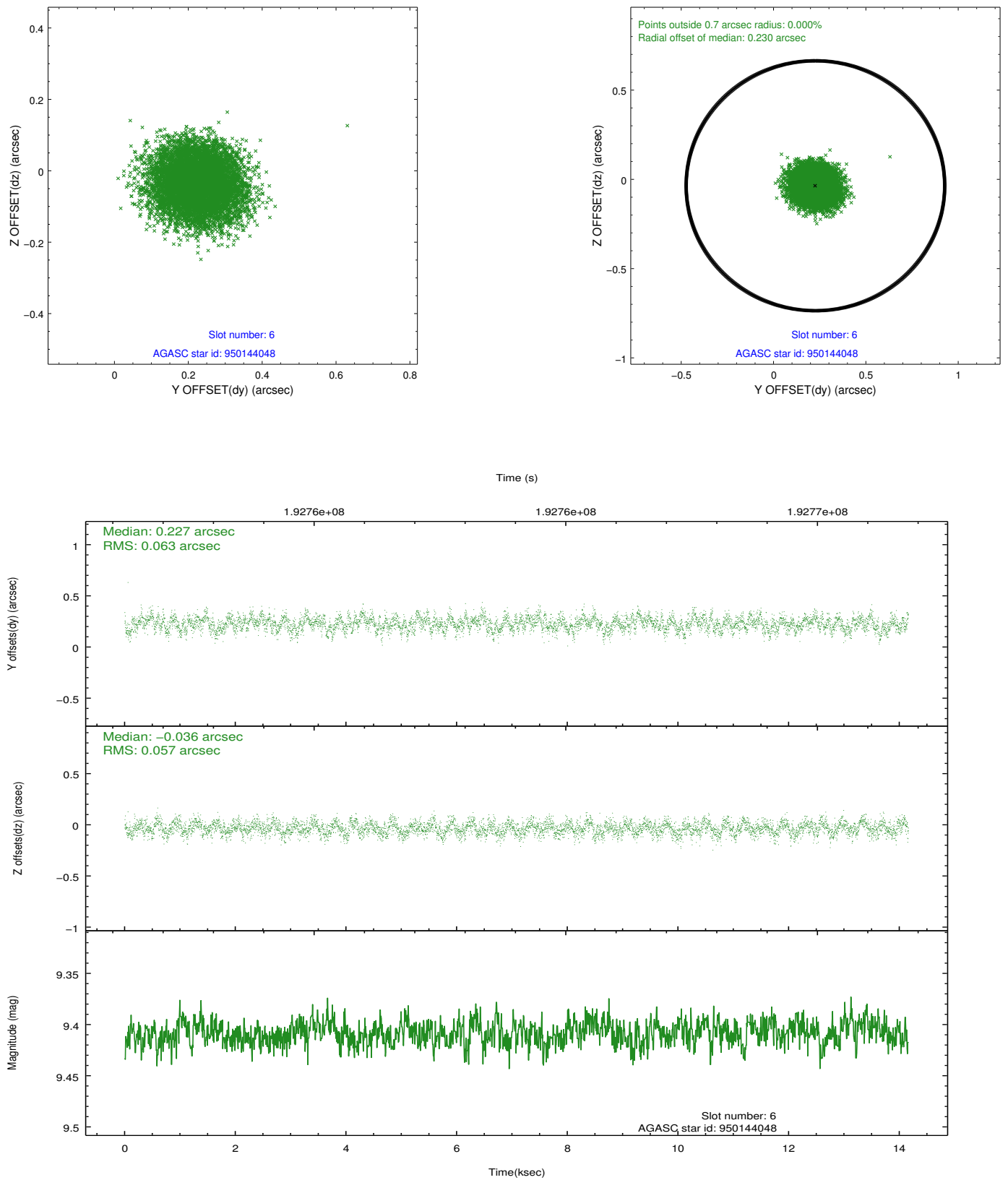
Time (s)



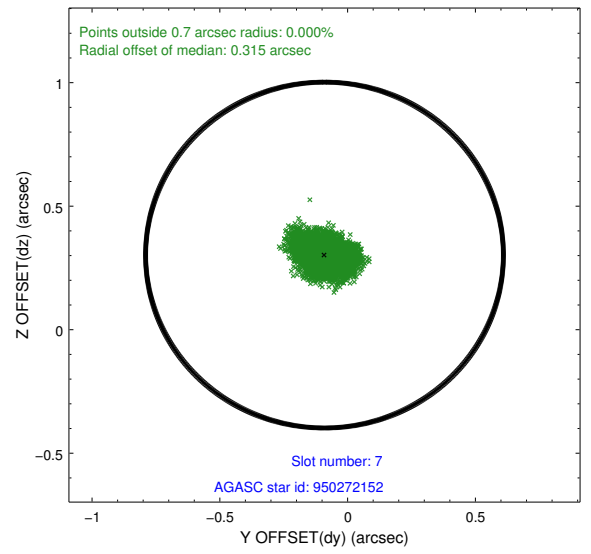
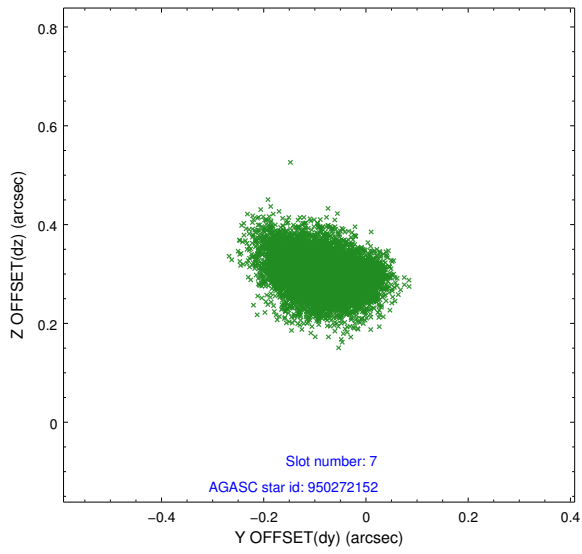
2.4.3 Slot 5



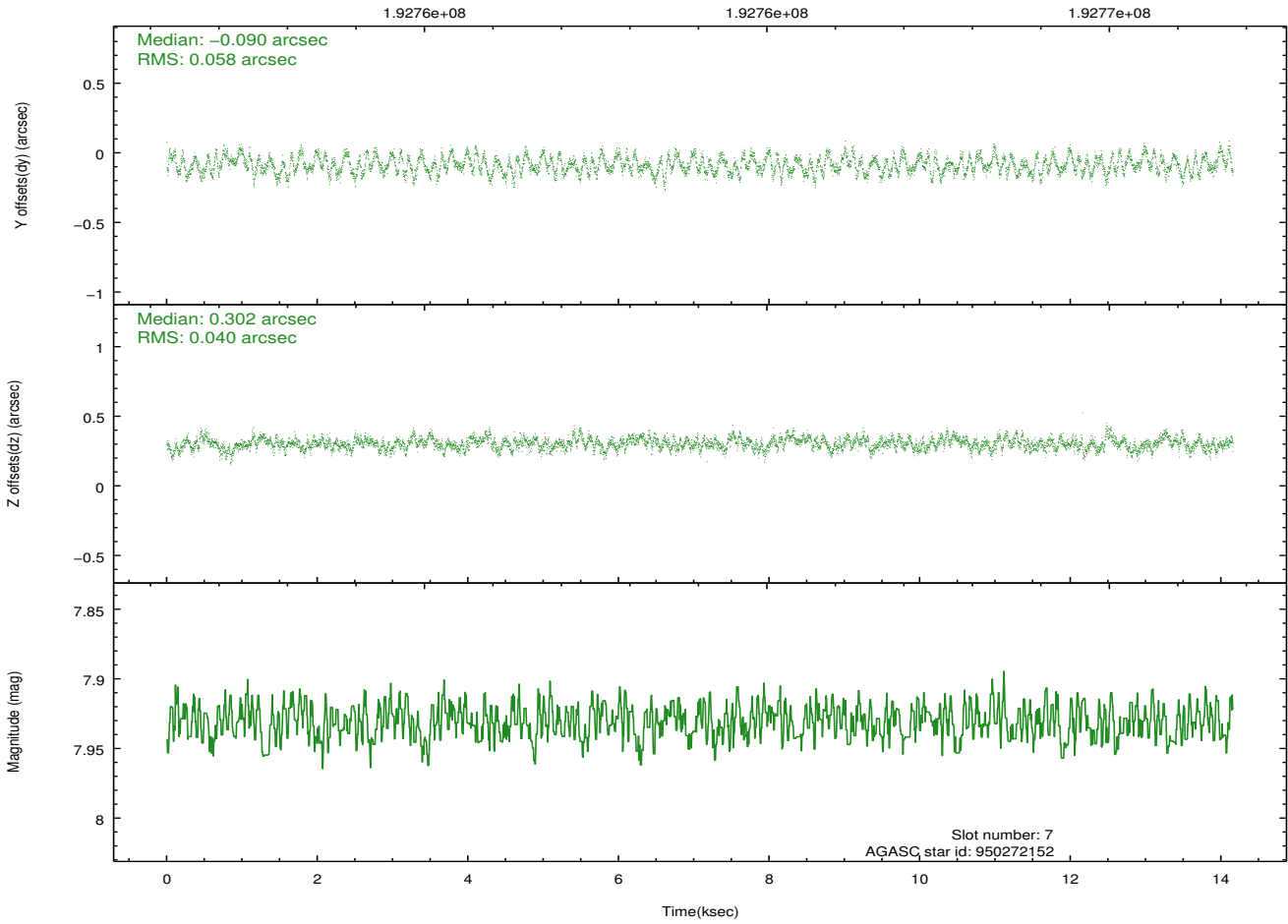
2.4.4 Slot 6



2.4.5 Slot 7

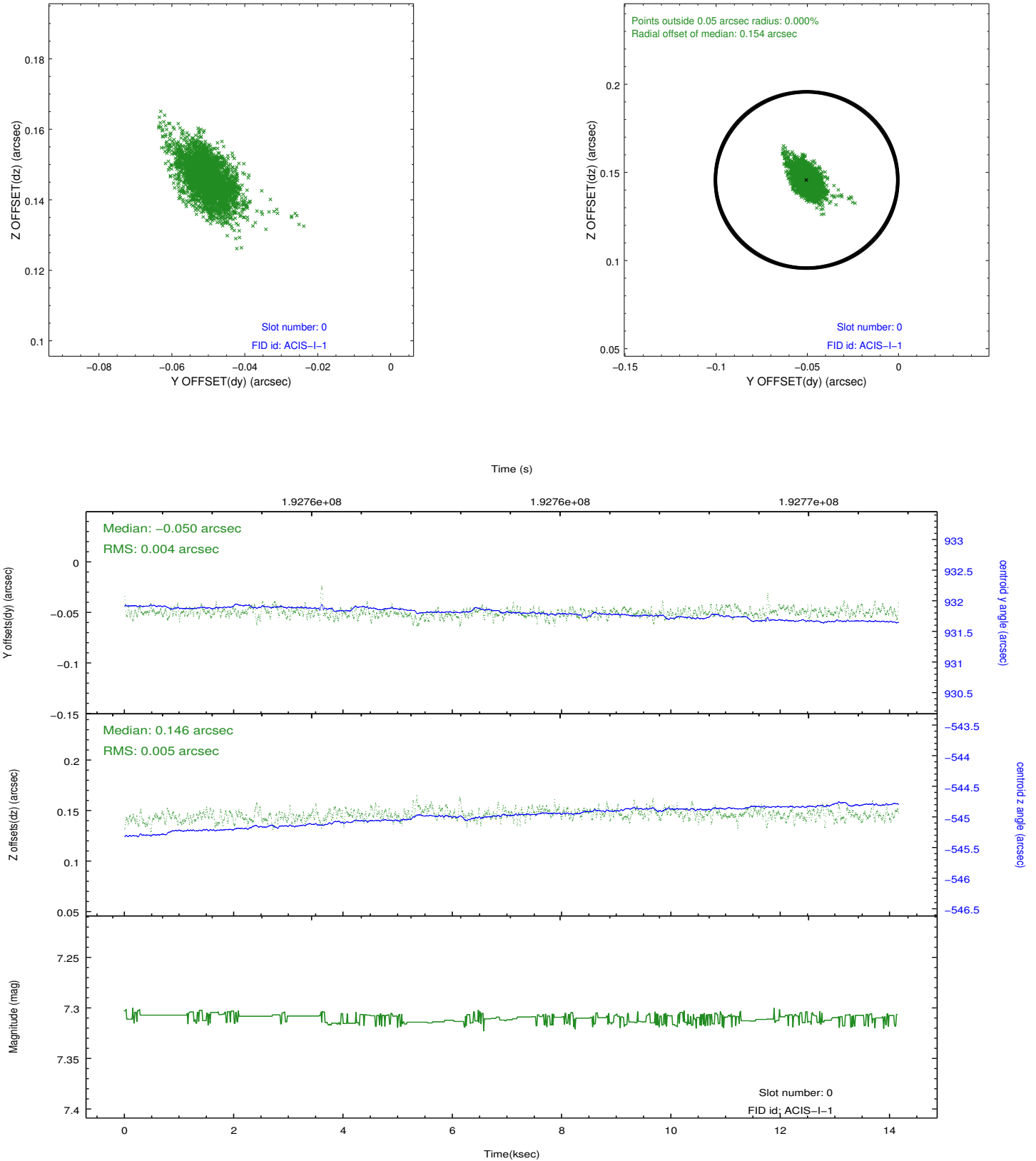


Time (s)

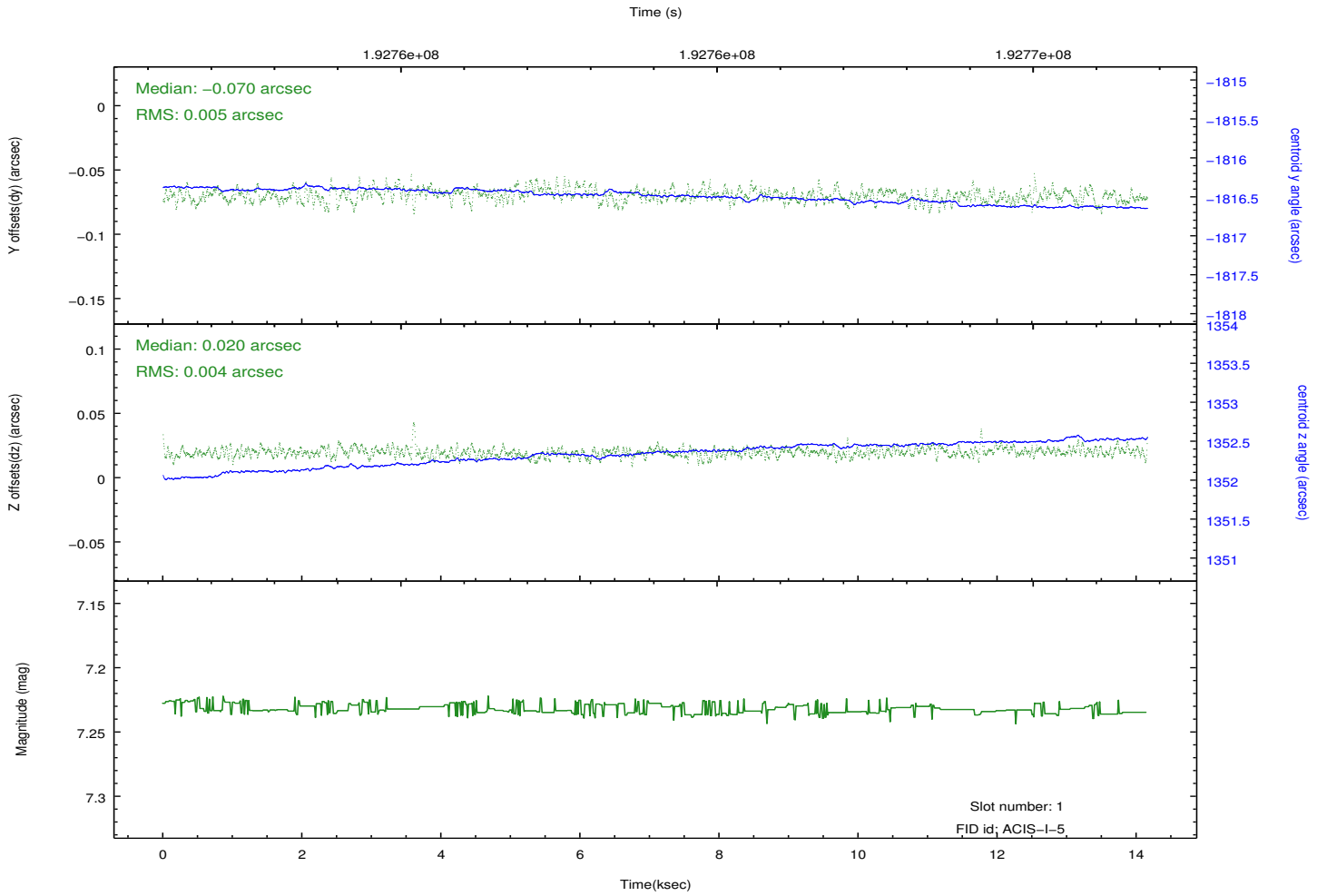
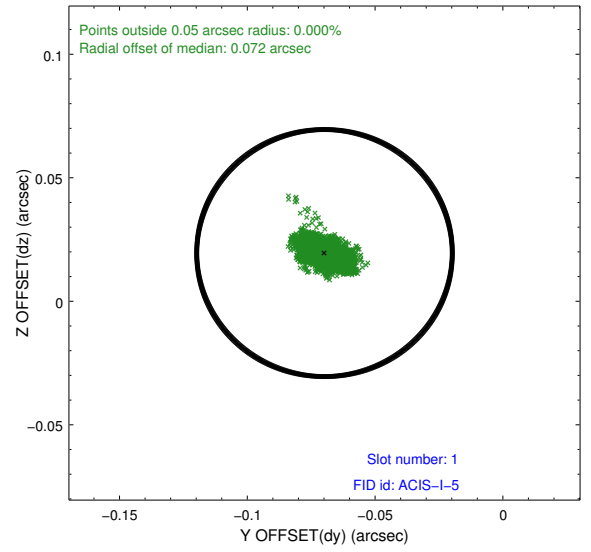
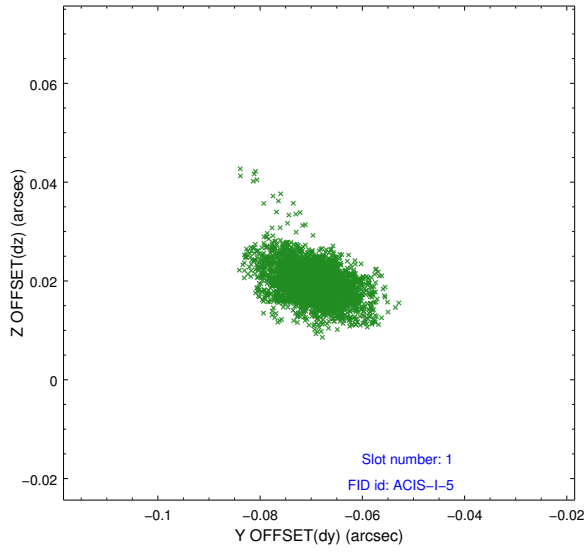


2.5 FID Slots

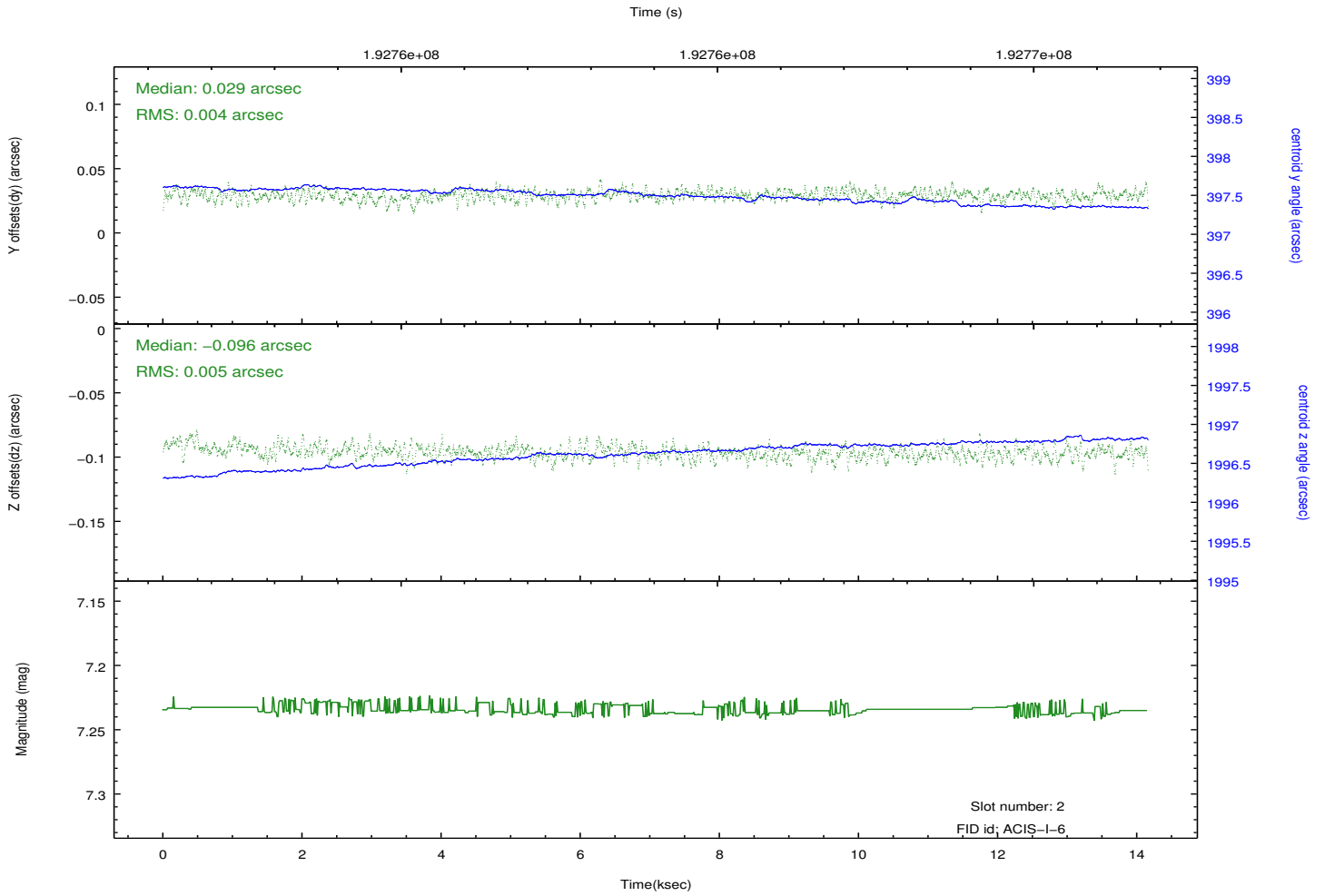
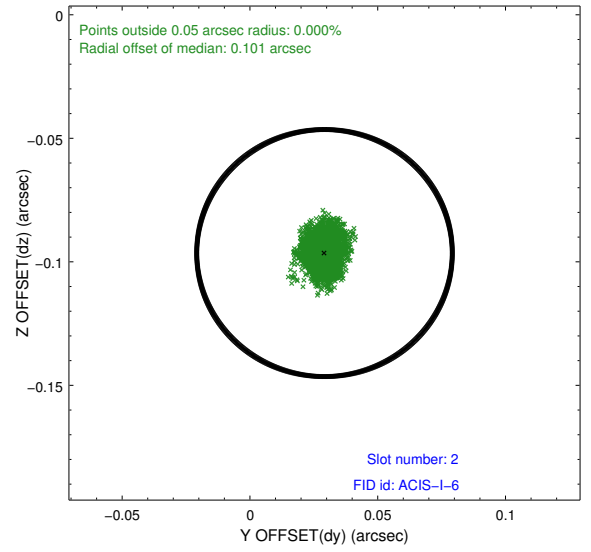
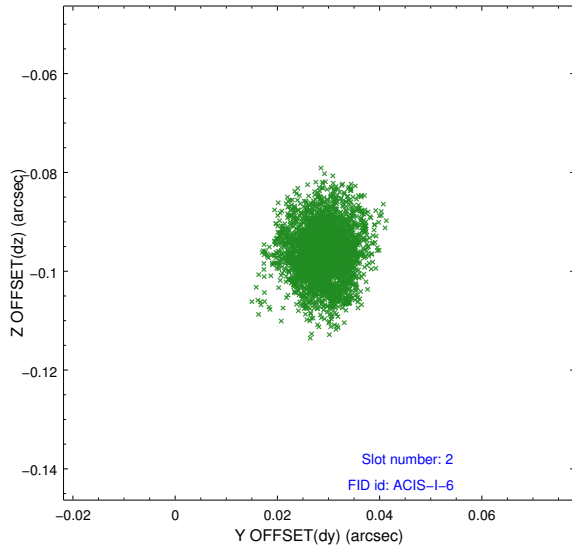
2.5.1 Slot 0



2.5.2 Slot 1



2.5.3 Slot 2



A Summary

A.1 Status

V&V Scientist	Beth Sundheim
V&V Date (YYYY-MM-DD)	2012.12.03
V&V Edition	1
V&V Disposition and Status	OK
V&V Charge Time	14.151

A.2 Comments