

V&V Reference Report

L2 ASCDS Version : 8.5

Observation 5027 - L2 Version 3
Chandra X-Ray Center

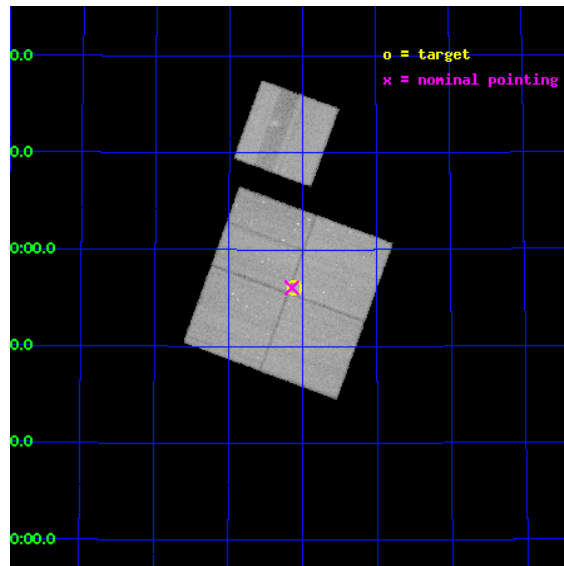
L2 Processing Date : Dec 10 2012

Contents

1	Front	2
2	OBI	3
2.1	OBI	3
2.1.1	Images	3
2.1.2	Bias	3
2.1.3	Parameters	4
2.1.4	Events	4
2.2	Compared Parameters	5
2.3	Aspect	6
2.4	Star Slots	9
2.4.1	Slot 3	9
2.4.2	Slot 4	10
2.4.3	Slot 5	11
2.4.4	Slot 6	12
2.4.5	Slot 7	13
2.5	FID Slots	14
2.5.1	Slot 0	14
2.5.2	Slot 1	15
2.5.3	Slot 2	16
A	Summary	17
A.1	Status	17
A.2	Comments	17

1 Front

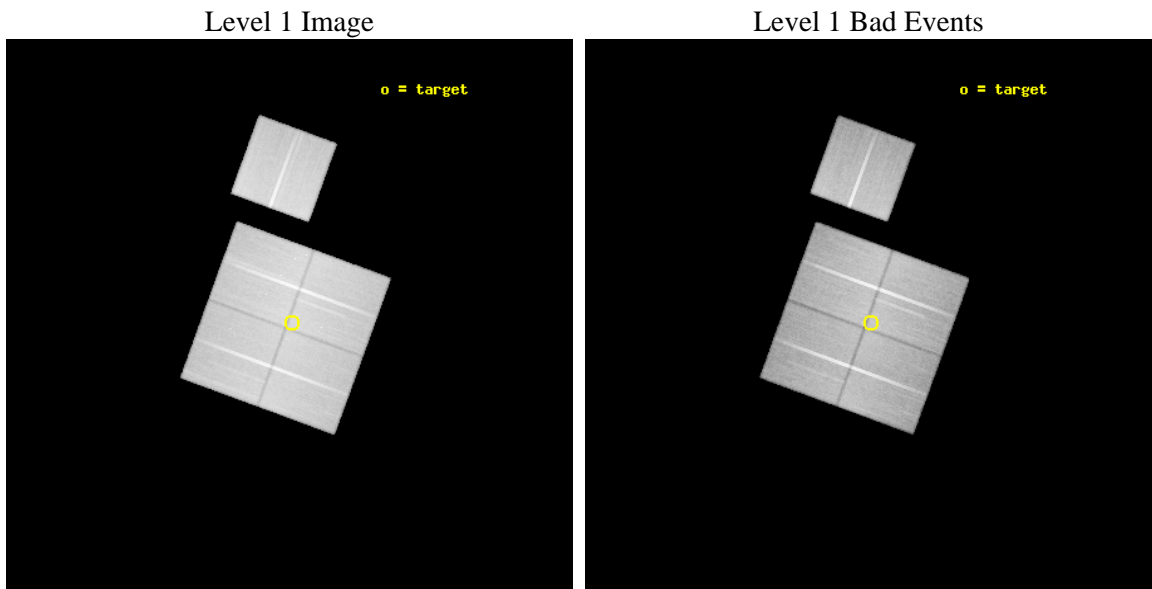
seq_num	900334	Sequence number
obs_id	5027	Observation id
title	The Balance of Power between Starbursts and AGN: a Chandra/SIRTf Survey.	Proposal title
observer	Dr. Belinda Wilkes	Principal investigator
object	SWIRE LOCKMAN 4	Source name
dtcycle	0	
cycle	P	events from which exps? Prim/Second/Both
ra_targ	161.027792	Observer's specified target RA [deg]
dec_targ	58.9348	Observer's specified target Dec [deg]
ra_nom	161.0367947432	Nominal RA [deg]
dec_nom	58.934571651608	Nominal Dec [deg]
roll_nom	20.073047084145	Nominal Roll [deg]
revision	3	Processing version of data
ontime	67964.317918897	Sum of GTIs [s]
livetime	67076.314070683	Livetime [s]
ontime0	67964.317958683	Sum of GTIs [s]
ontime1	67970.599869281	Sum of GTIs [s]
ontime2	67964.317908913	Sum of GTIs [s]
ontime3	67964.317918897	Sum of GTIs [s]
ontime6	67948.613057762	Sum of GTIs [s]
l2events	375484	Number of level 2 events



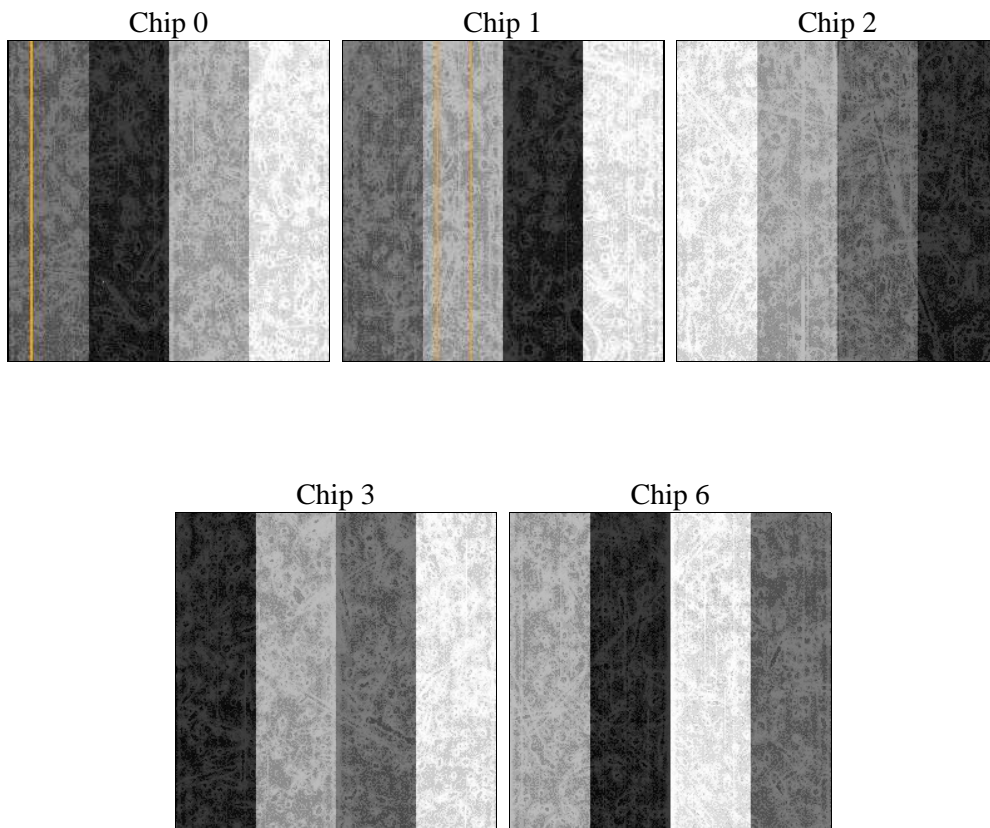
2 OBI

2.1 OBI

2.1.1 Images



2.1.2 Bias



2.1.3 Parameters

obi_num	0	Obi number	sched_exp_time	67793.000000	[s] Scheduled observation exposure time
ascdsver	8.5	Processing system revision	ontime	67964.317918897	Sum of GTIs [s]
caldbver	4.5.4	 	ontime0	67964.317958683	Sum of GTIs [s]
date	2012-12-09T03:30:54	Date and time of file creation	ontime1	67970.599869281	Sum of GTIs [s]
revision	3	Processing version of data	ontime2	67964.317908913	Sum of GTIs [s]
			ontime3	67964.317918897	Sum of GTIs [s]
			ontime6	67948.613057762	Sum of GTIs [s]
			l1events	2857962	Number of level 1 events

2.1.4 Events

	ccd 0	ccd 1	ccd 2	ccd 3	ccd 6
level 1 events	526946	542597	612675	587758	587986
rejected events	434904	452925	516373	501011	499752
rejected %	82%	83%	84%	85%	84%

	ccd 0	ccd 1	ccd 2	ccd 3	ccd 6
grade 0 events	37961	32097	43155	34313	34731
	7%	5%	7%	5%	5%
grade 1 events	380	287	426	343	322
	0%	0%	0%	0%	0%
grade 2 events	23946	25357	22625	22038	23883
	4%	4%	3%	3%	4%
grade 3 events	6310	6694	5895	6133	6046
	1%	1%	0%	1%	1%
grade 4 events	6162	6592	7937	6406	6120
	1%	1%	1%	1%	1%
grade 5 events	20555	21371	19840	22682	22594
	3%	3%	3%	3%	3%
grade 6 events	18109	19430	17135	18329	17868
	3%	3%	2%	3%	3%
grade 7 events	413523	430769	495662	477514	476422
	78%	79%	80%	81%	81%

2.2 Compared Parameters

Parameter	Planned	Actual	Parameter	Planned	Actual
Instrument	ACIS	ACIS	Obspar format version number	7	7
Detector	ACIS-01236	ACIS-01236	Obspar file type	PREDICTED	ACTUAL
Grating	NONE	NONE	Obspar update status	NONE	UPDATED
Data mode	VFAINT	VFAINT	Number of optional ACIS chips dropped	0	0
Observation mode	POINTING	POINTING	On-chip summing requested	N	N
[deg] Pointing RA	161.002893	161.0367947431979	Subarray requested	NONE	NONE
[deg] Pointing Dec	58.913495	58.93457165160814	Alternating exposures requested	N	N
[deg] Pointing Roll	19.893390	20.07304708414491	[s] Primary exposure time	0.000000	3.1
[deg] Roll angle	19.200000	19.200000			
[deg] Roll tolerance	1.800000	1.800000			
Roll constraint allows 180D rotation	Y	Y			
[mm] SIM focus pos	-0.782348	-0.7809083437167272			
[mm] SIM defocus	0	0.001439871863259334			
[mm] SIM translation stage pos	-233.592463	-233.5874344608287			
[mm] SIM translation stage offset	0	-0.005018542100998502			
[s] Observation start time (MET)	212079717.184000	212078498.76516			
Observation start date	2004-09-20T15:00:53	2004-09-20T14:41:38			
[s] Observation end time (MET)	212147510.184000	212148750.7308			
Observation end date	2004-09-21T09:50:46	2004-09-21T10:12:30			
Read mode	TIMED	TIMED			

2.3 Aspect

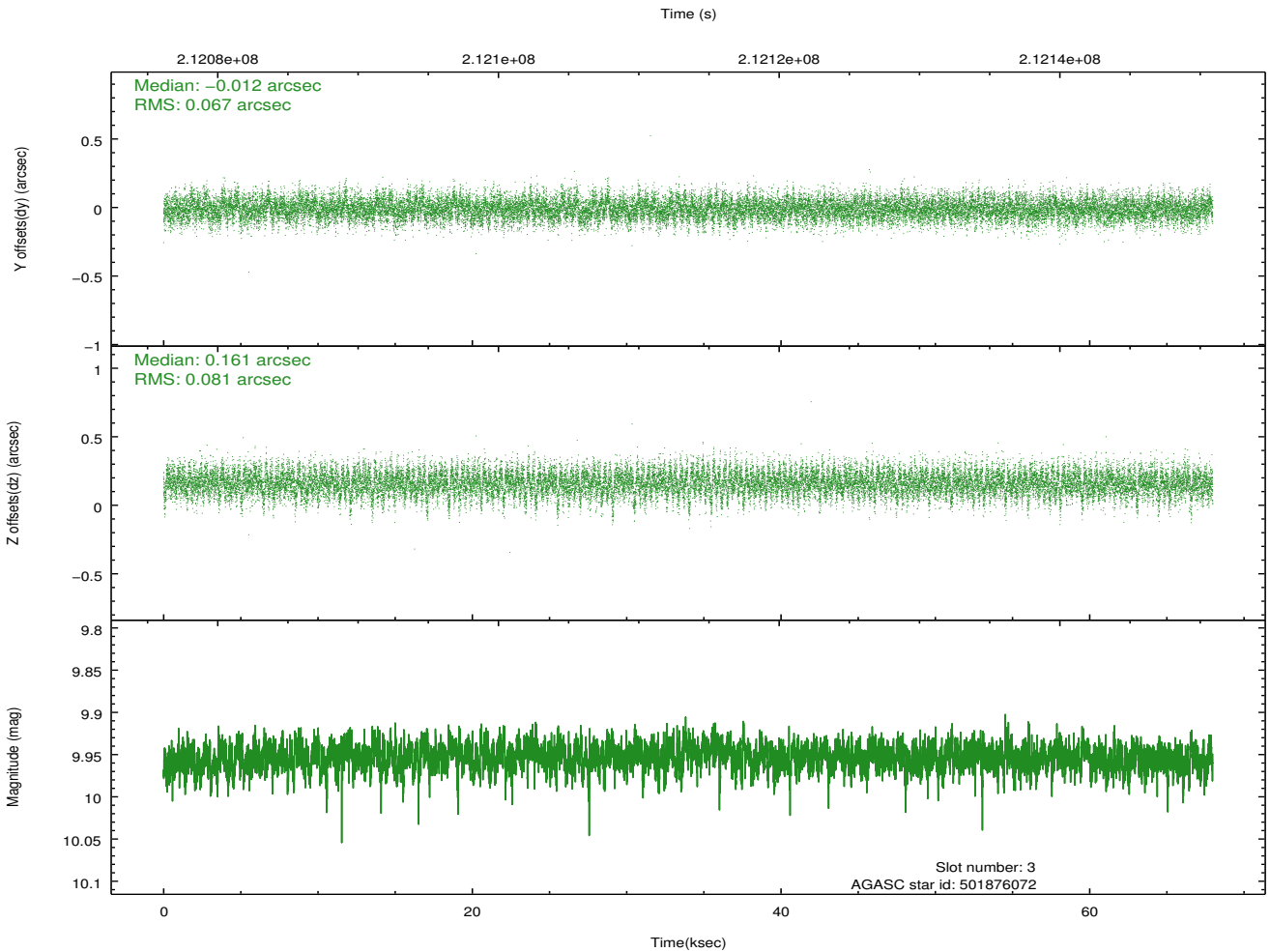
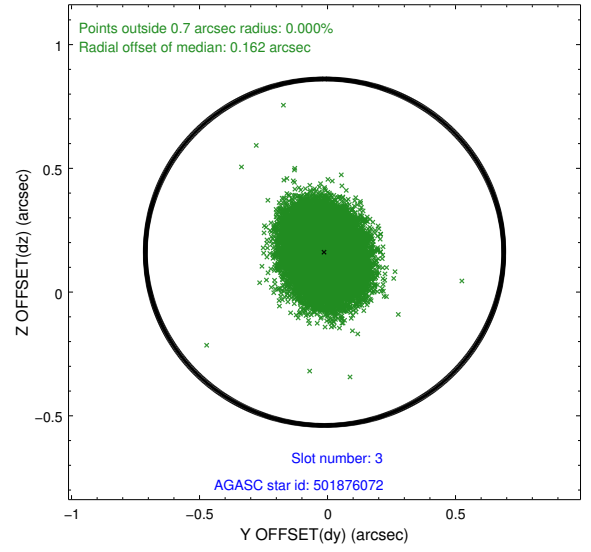
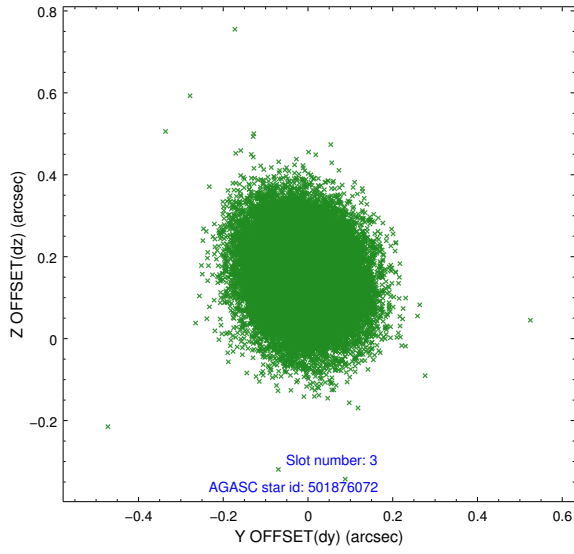
Slot Statistics

slot	status	id	mag	n_pts	med_dy	med_dz	dr1	dr2	ra	dec	mean_y	mean_z
0	FID	ACIS-I-1	7.24	16581	-0.022	-0.064	0.009	0.015	0.000000	0.000000	931.56	-835.65
1	FID	ACIS-I-4	7.17	16578	0.136	0.078	0.012	0.018	0.000000	0.000000	2151.74	1064.31
2	FID	ACIS-I-5	7.22	16579	-0.213	0.056	0.015	0.023	0.000000	0.000000	-1816.69	1062.11
3	GUIDE	501876072	9.95	33121	-0.012	0.161	0.111	0.183	161.273533	58.620125	118.51	-1164.68
4	GUIDE	501876608	8.59	33148	-0.071	0.045	0.068	0.112	161.204341	58.717464	114.29	-791.29
5	GUIDE	501878216	8.98	33066	0.028	-0.097	0.069	0.114	161.663048	59.249982	1557.05	731.31
6	GUIDE	501882104	8.45	33151	0.127	-0.180	0.066	0.103	160.237120	59.342503	-793.71	1937.27
7	GUIDE	501880360	8.30	33155	-0.075	0.072	0.060	0.097	161.850113	59.665463	2372.94	2031.06

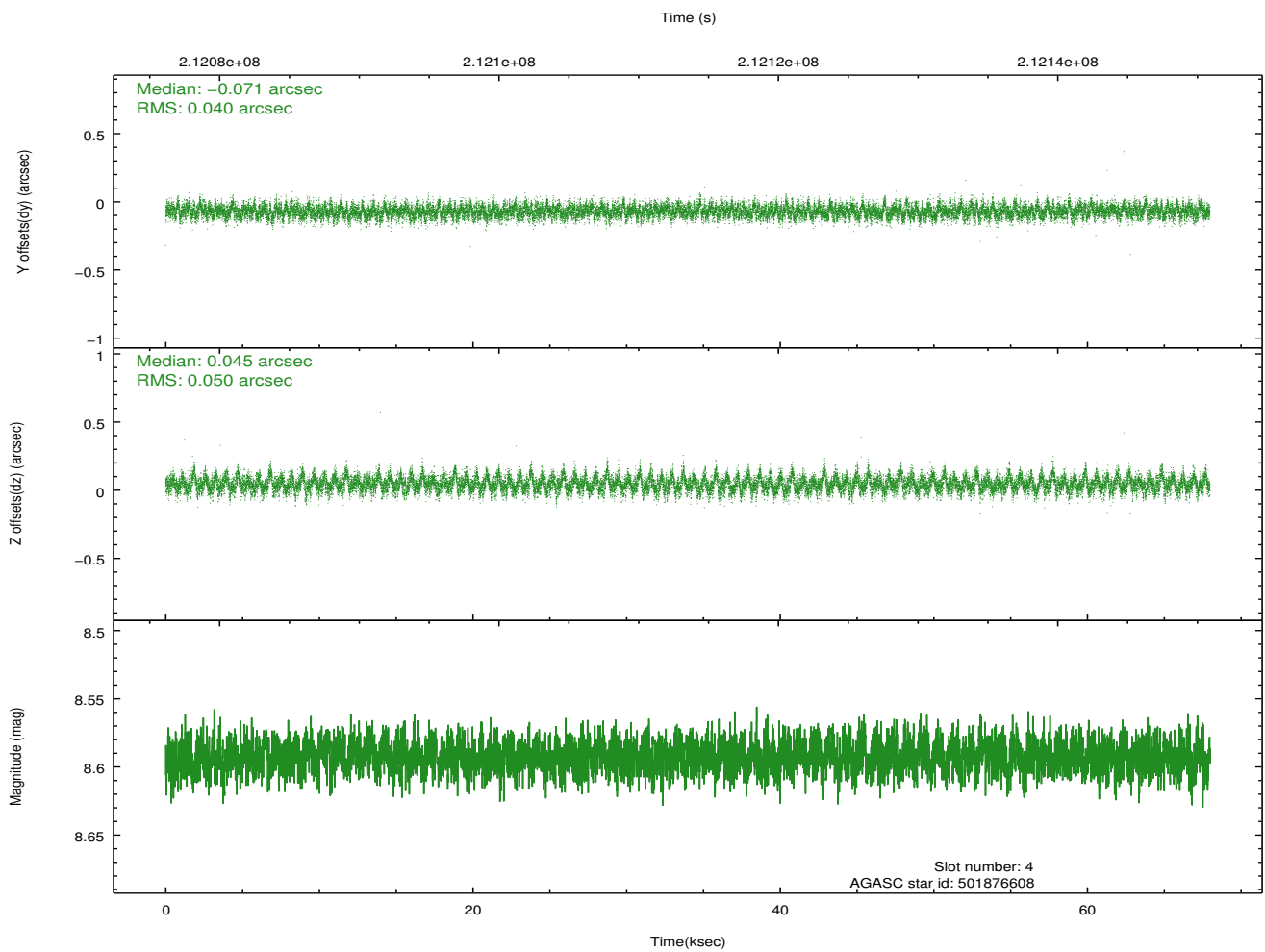
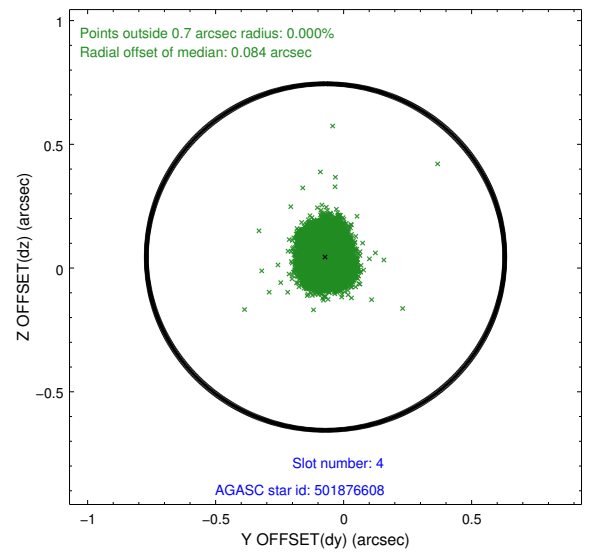
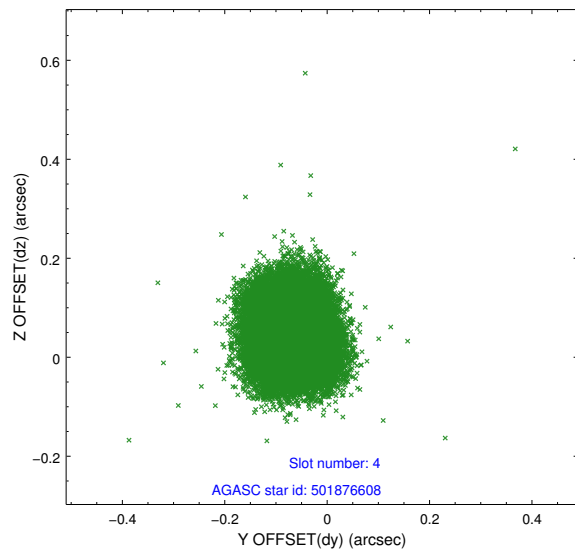
∞

2.4 Star Slots

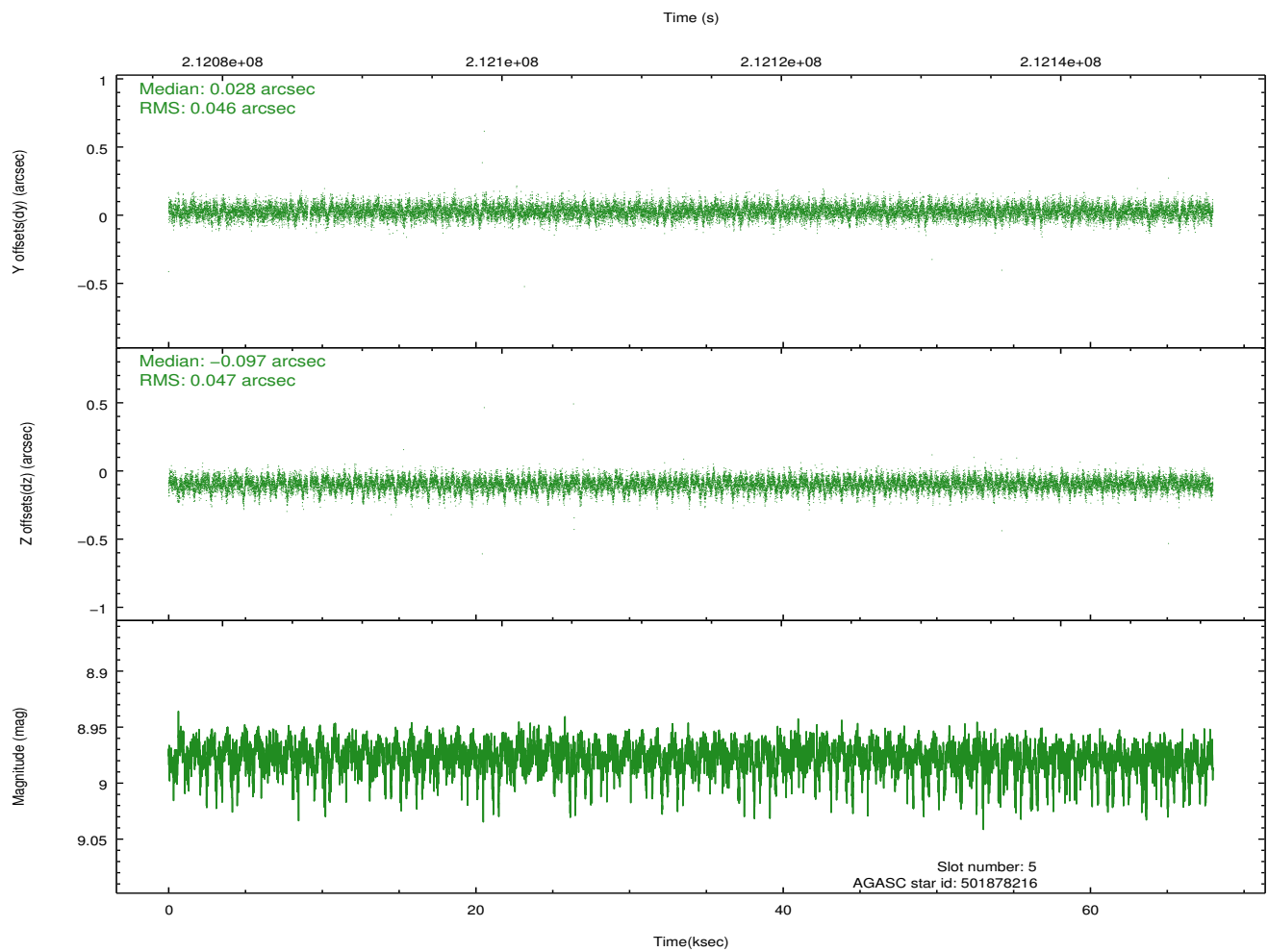
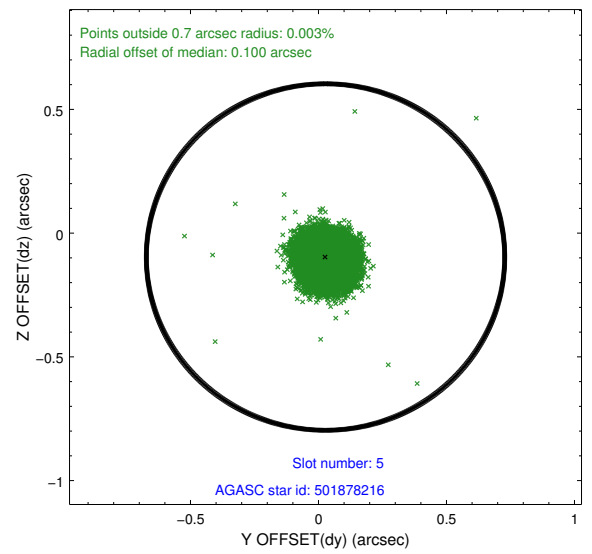
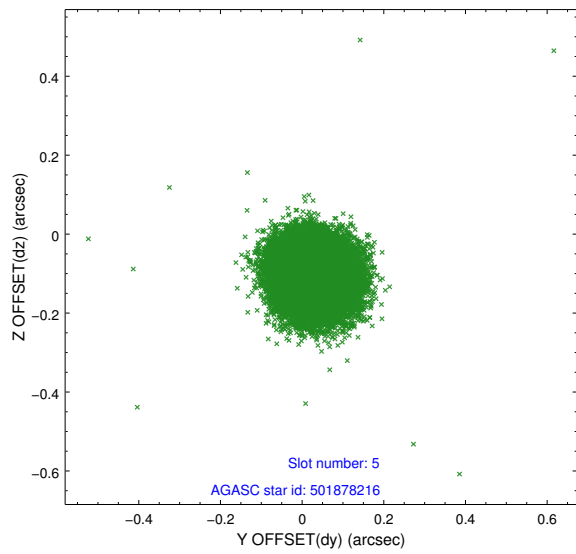
2.4.1 Slot 3



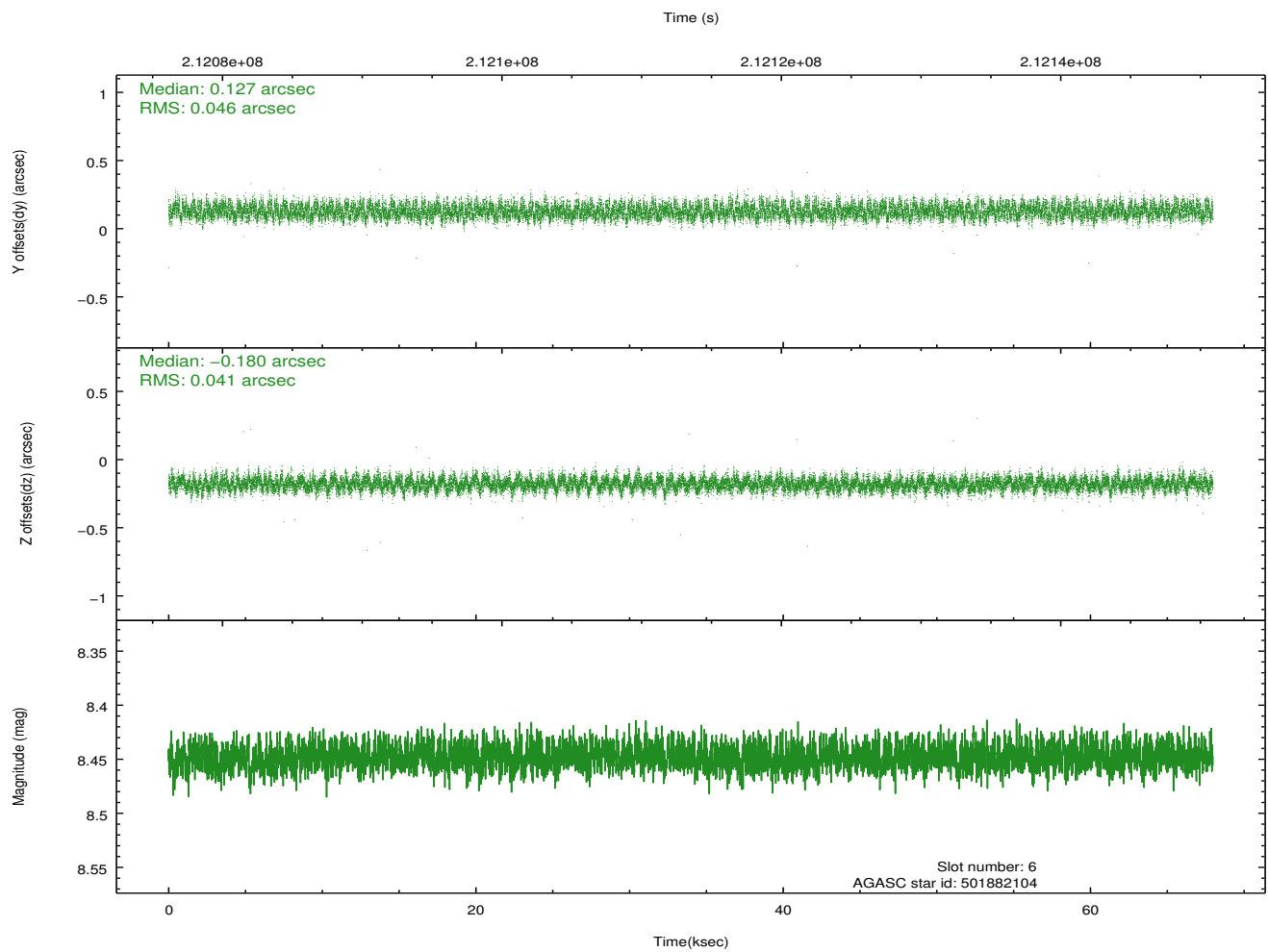
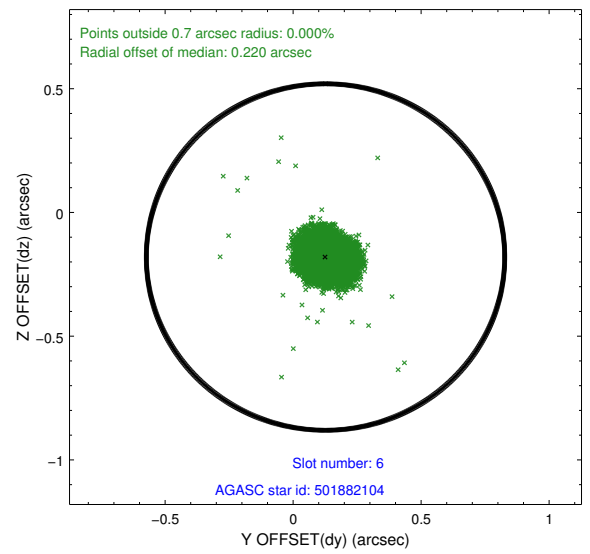
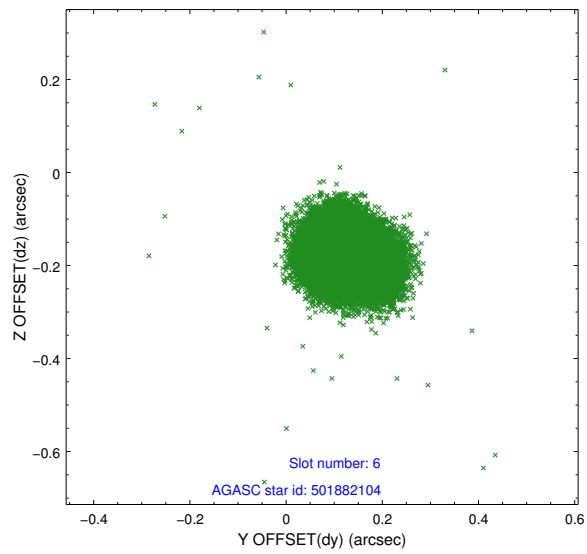
2.4.2 Slot 4



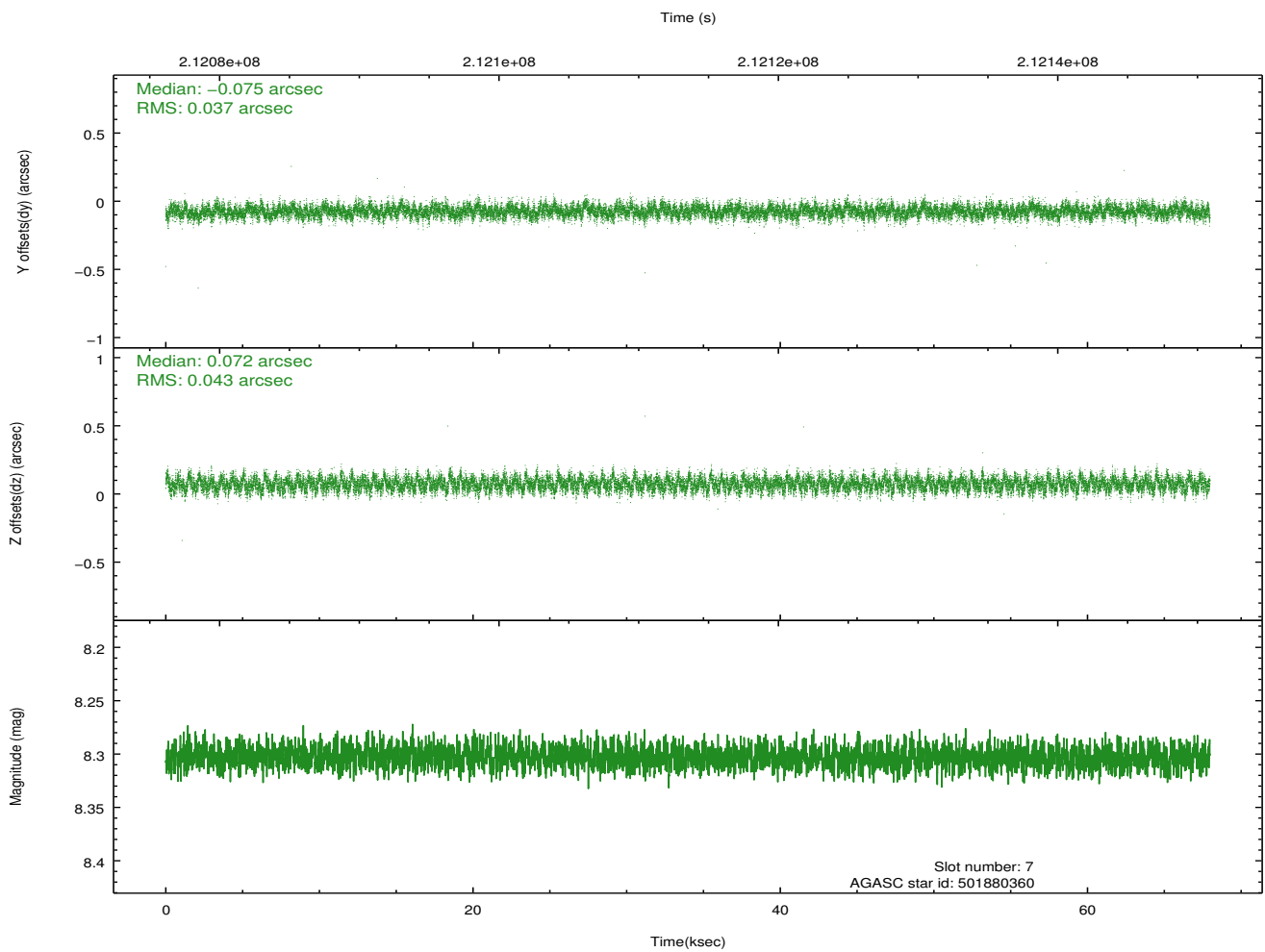
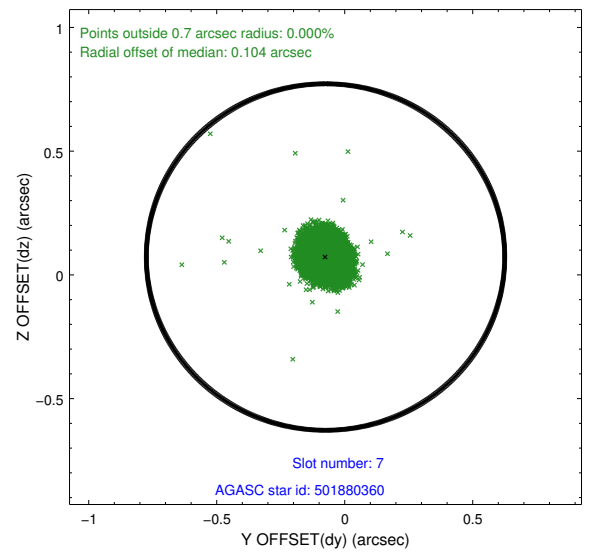
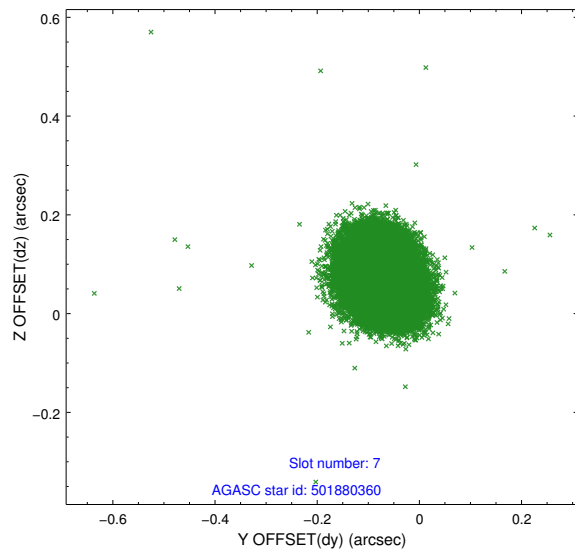
2.4.3 Slot 5



2.4.4 Slot 6

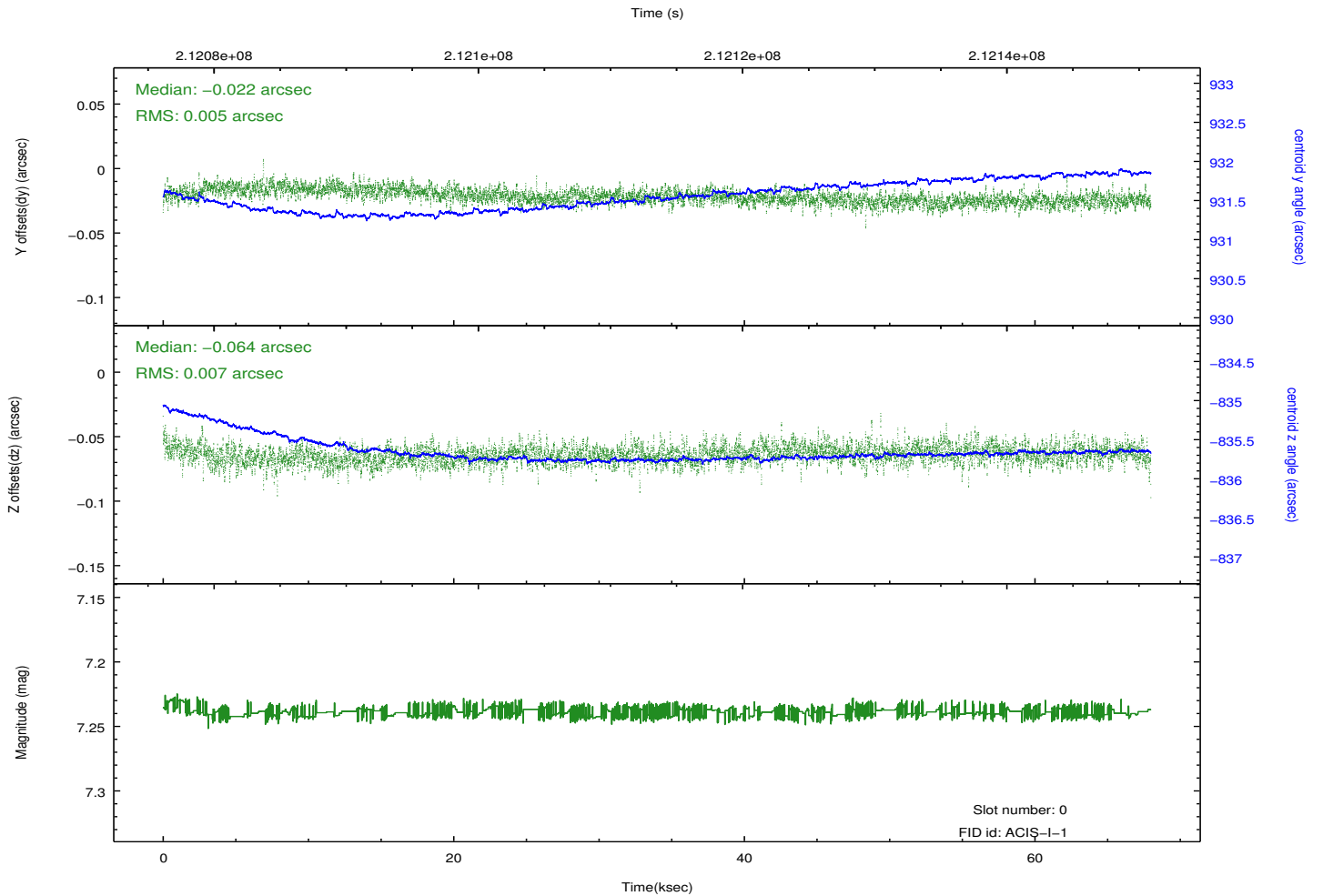
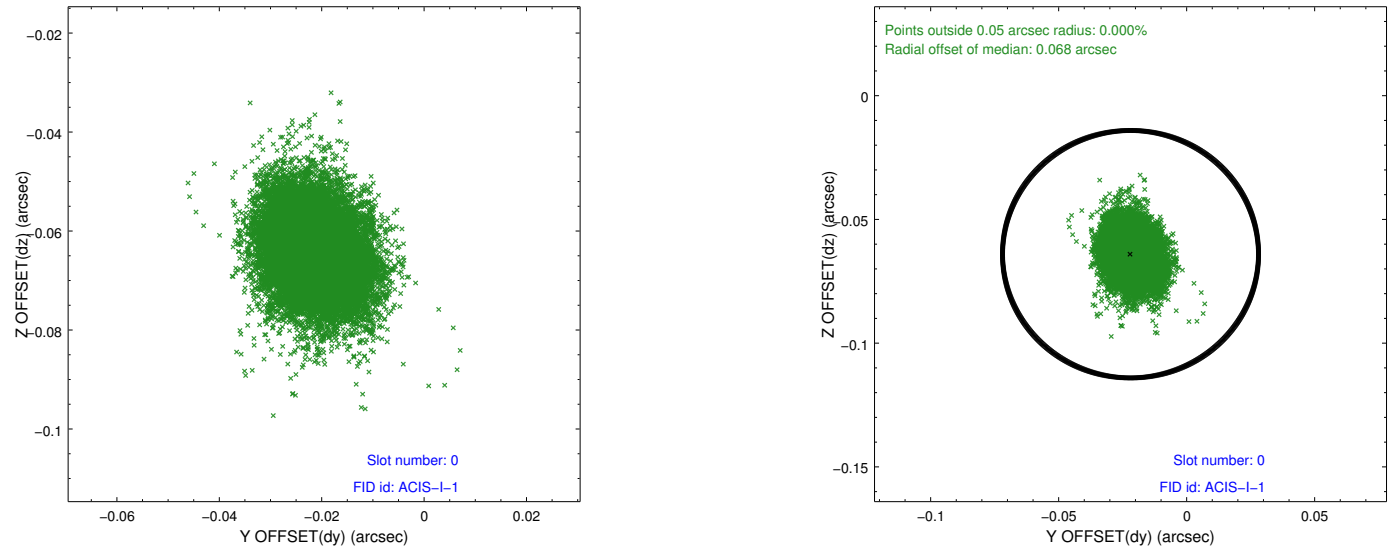


2.4.5 Slot 7

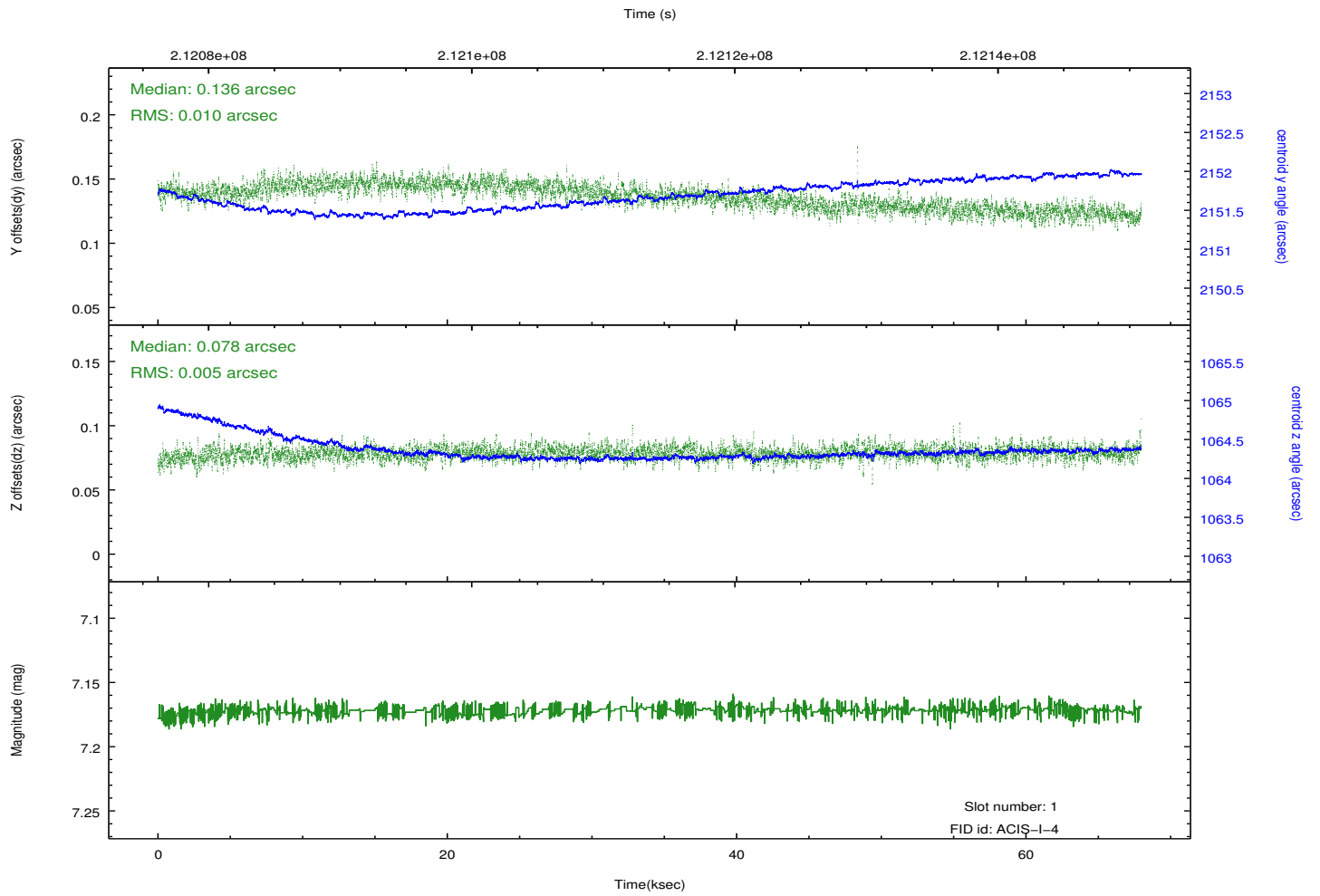
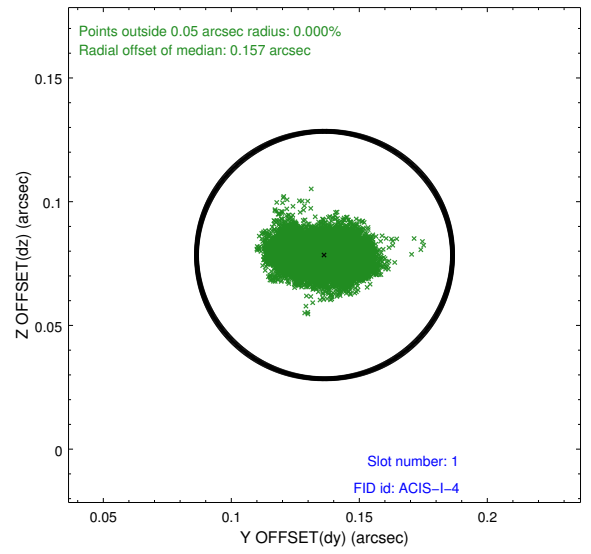
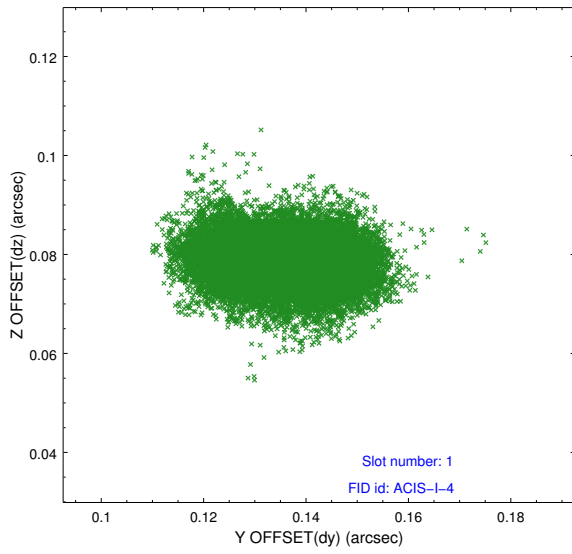


2.5 FID Slots

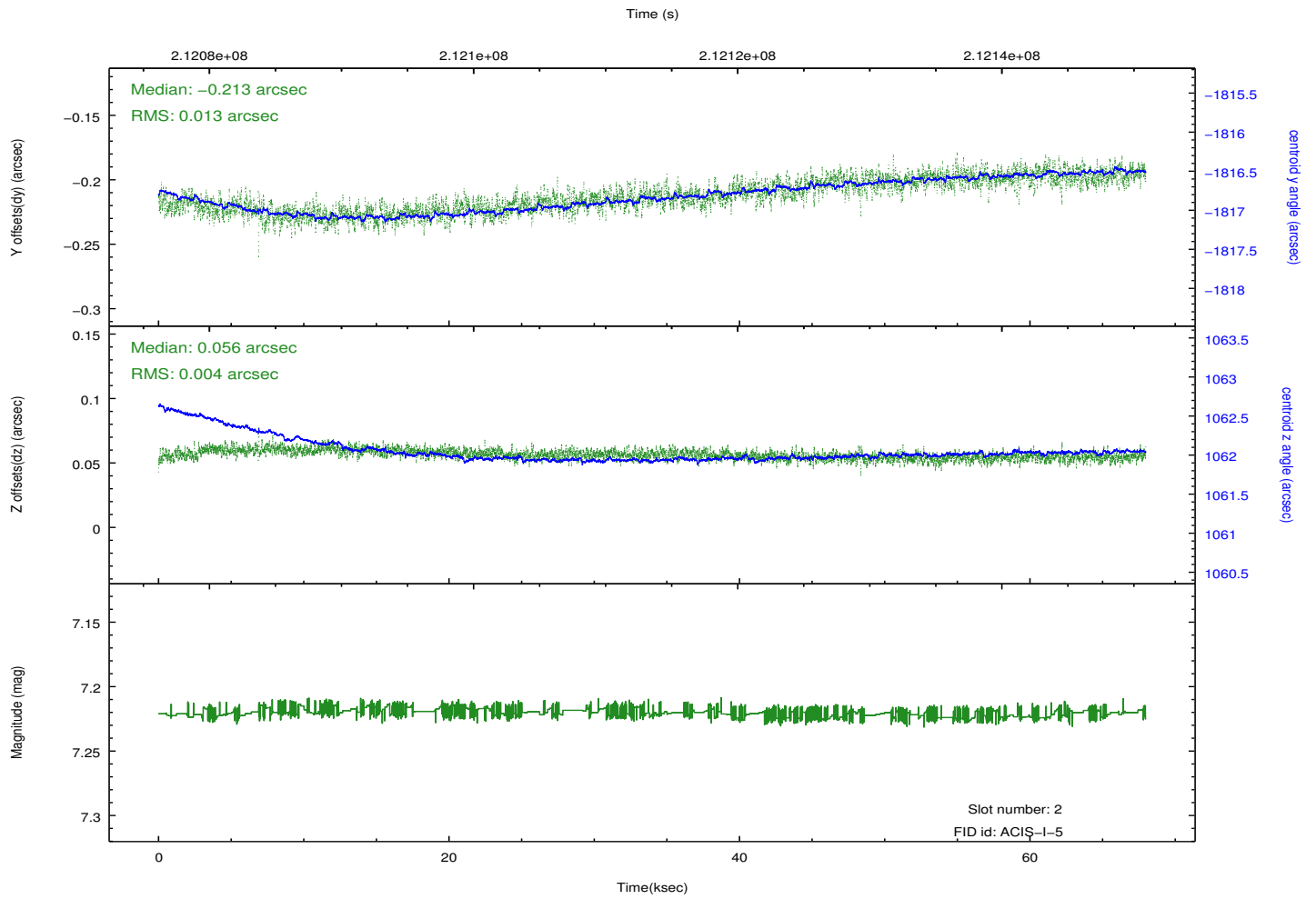
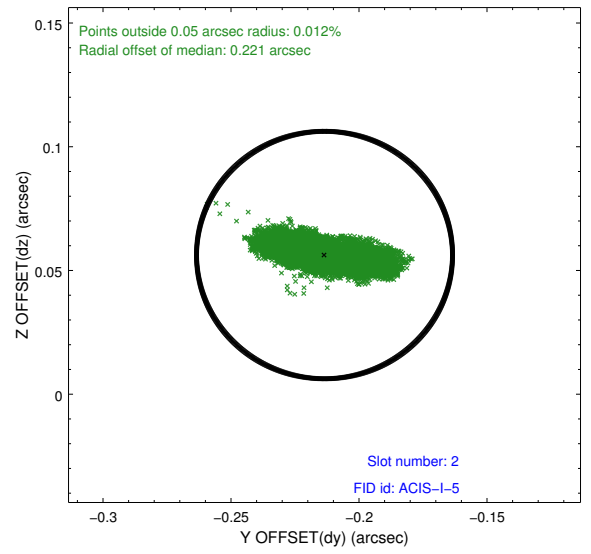
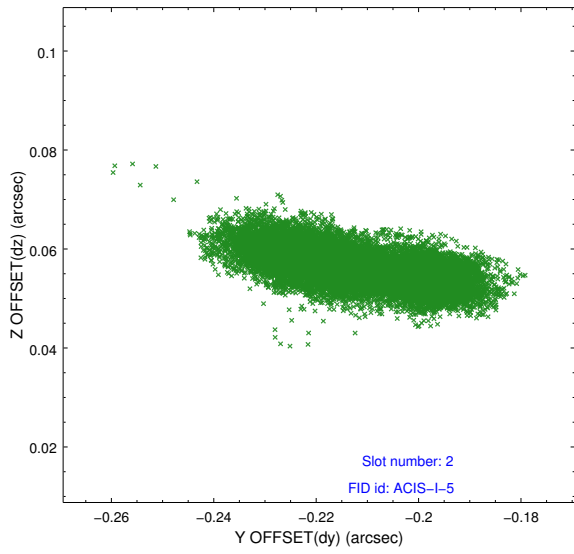
2.5.1 Slot 0



2.5.2 Slot 1



2.5.3 Slot 2



A Summary

A.1 Status

V&V Scientist	Jen Lauer
V&V Date (YYYY-MM-DD)	2013.01.03
V&V Edition	1
V&V Disposition and Status	OK
V&V Charge Time	67.964

A.2 Comments

Roll constraint satisfied. Joint Proposal: NOAO