

V&V Reference Report

L2 ASCDS Version : 8.4.5

Observation 5167 - L2 Version 4
Chandra X-Ray Center

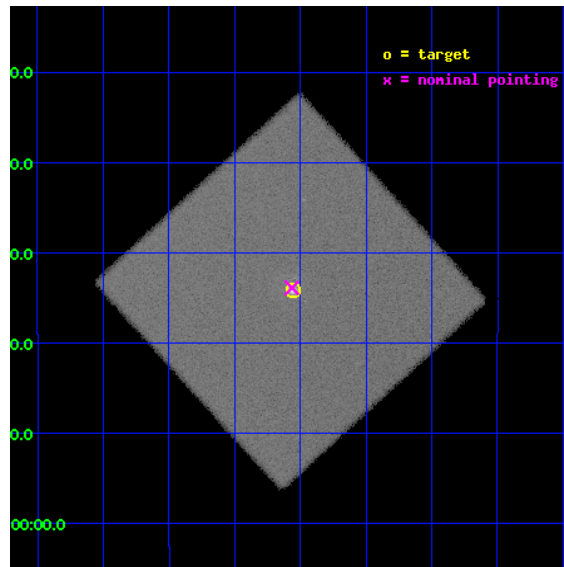
L2 Processing Date : Nov 13 2012

Contents

1	Front	2
2	OBI	3
2.1	OBI	3
2.1.1	Images	3
2.1.2	Parameters	4
2.1.3	Events	4
2.2	Compared Parameters	5
2.3	Aspect	6
2.4	Star Slots	9
2.4.1	Slot 3	9
2.4.2	Slot 4	10
2.4.3	Slot 5	11
2.4.4	Slot 6	12
2.4.5	Slot 7	13
2.5	FID Slots	14
2.5.1	Slot 0	14
2.5.2	Slot 1	15
2.5.3	Slot 2	16
A	Summary	17
A.1	Status	17
A.2	Comments	17

1 Front

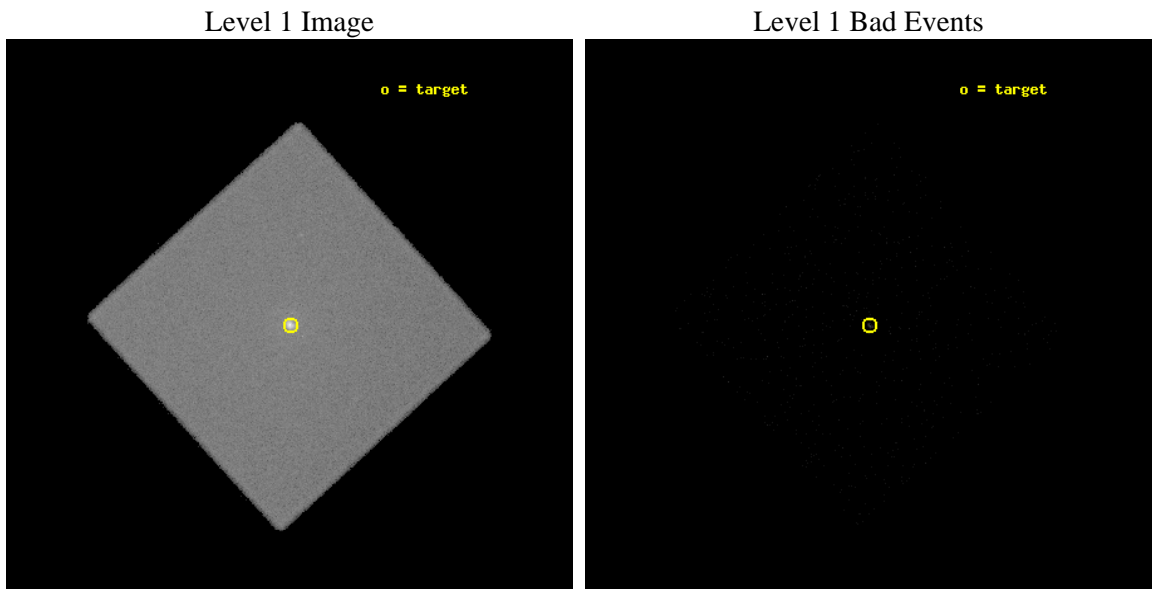
seq_num	590365	Sequence number
obs_id	5167	Observation id
title	AO5A Observations of the Standard Candles Cas A and G21.5-09	Propo
observer	Dr. CXC Calibration	Principal investigator
object	G21.5-09	Source name
ra_targ	278.389583	Observer's specified target RA [deg]
dec_targ	-10.568528	Observer's specified target Dec [deg]
ra_nom	278.39104496505	Nominal RA [deg]
dec_nom	-10.564662366852	Nominal Dec [deg]
roll_nom	92.604761371972	Nominal Roll [deg]
revision	4	Processing version of data
ontime	19183.132092774	[s]
livetime	19069.396228105	Ontime multiplied by DTCOR
l2events	594818	Number of level 2 events



2 OBI

2.1 OBI

2.1.1 Images



2.1.2 Parameters

obi_num	1	Obi number	sched_exp_time	19200.000000	[s] Scheduled observation exposure time
ascdsver	8.4.5	Processing system revision	ontime	19183.132092774	[s]
caldsver	4.5.2	 	l1events	893775	Number of level 1 events
date	2012-11-14T00:42:31	Date and time of file creation			
revision	4	Processing version of data			

2.1.3 Events

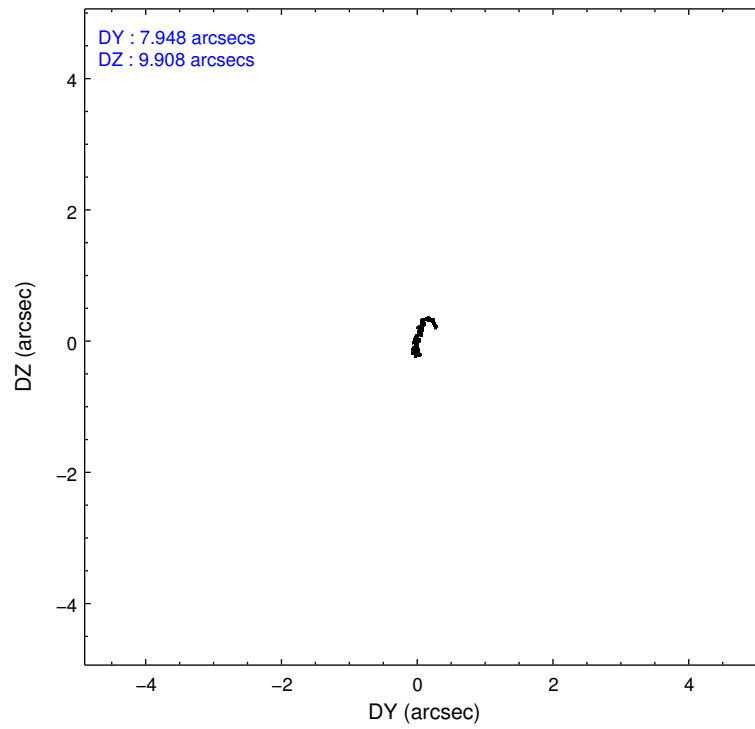
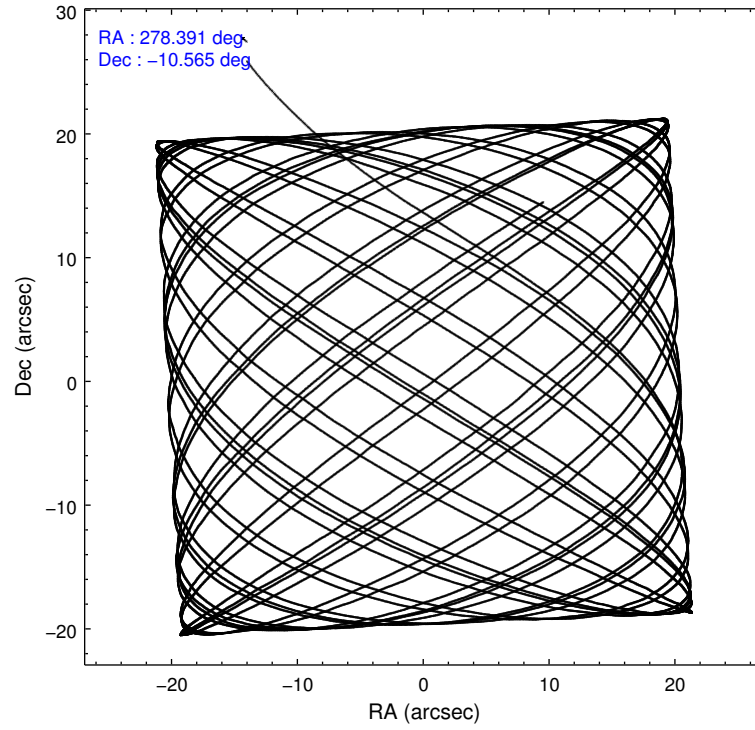
Level 1 Events

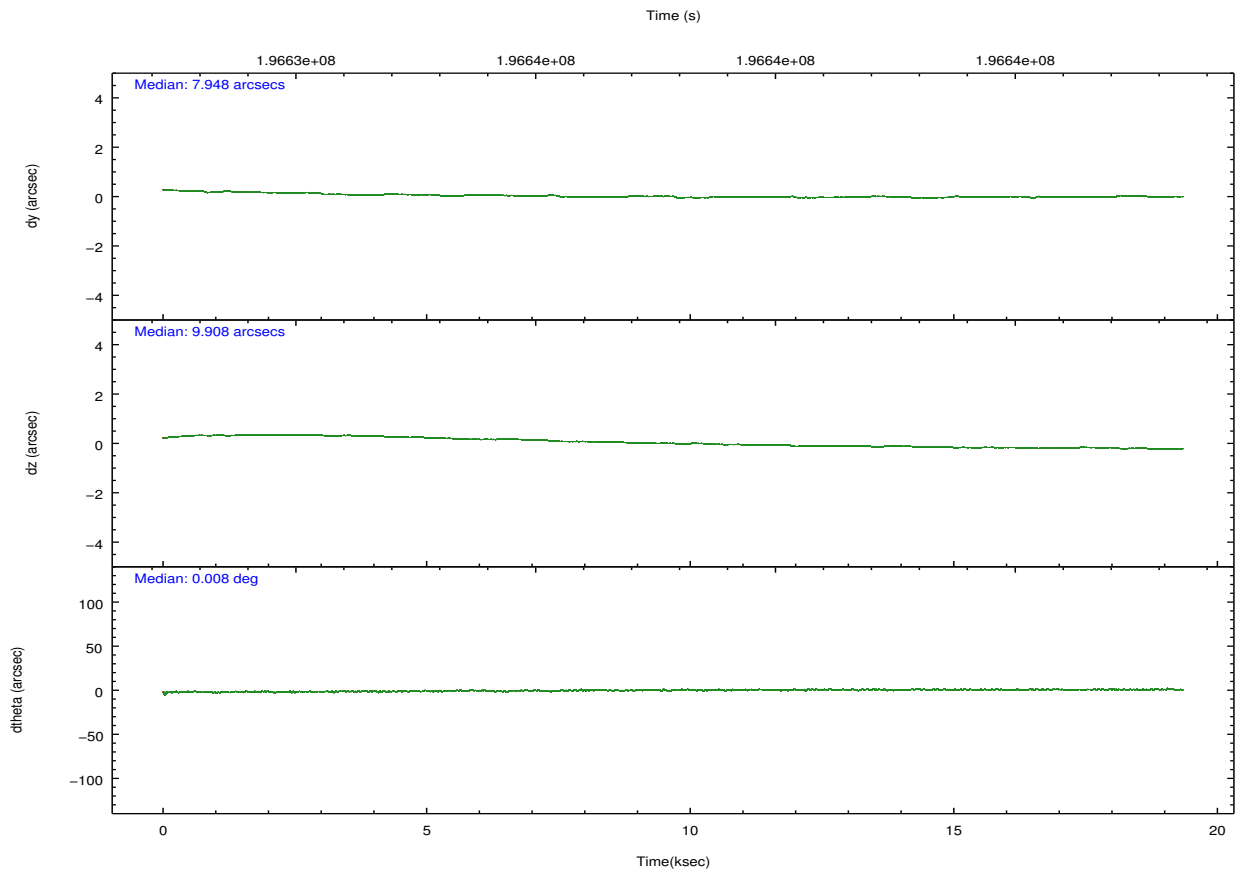
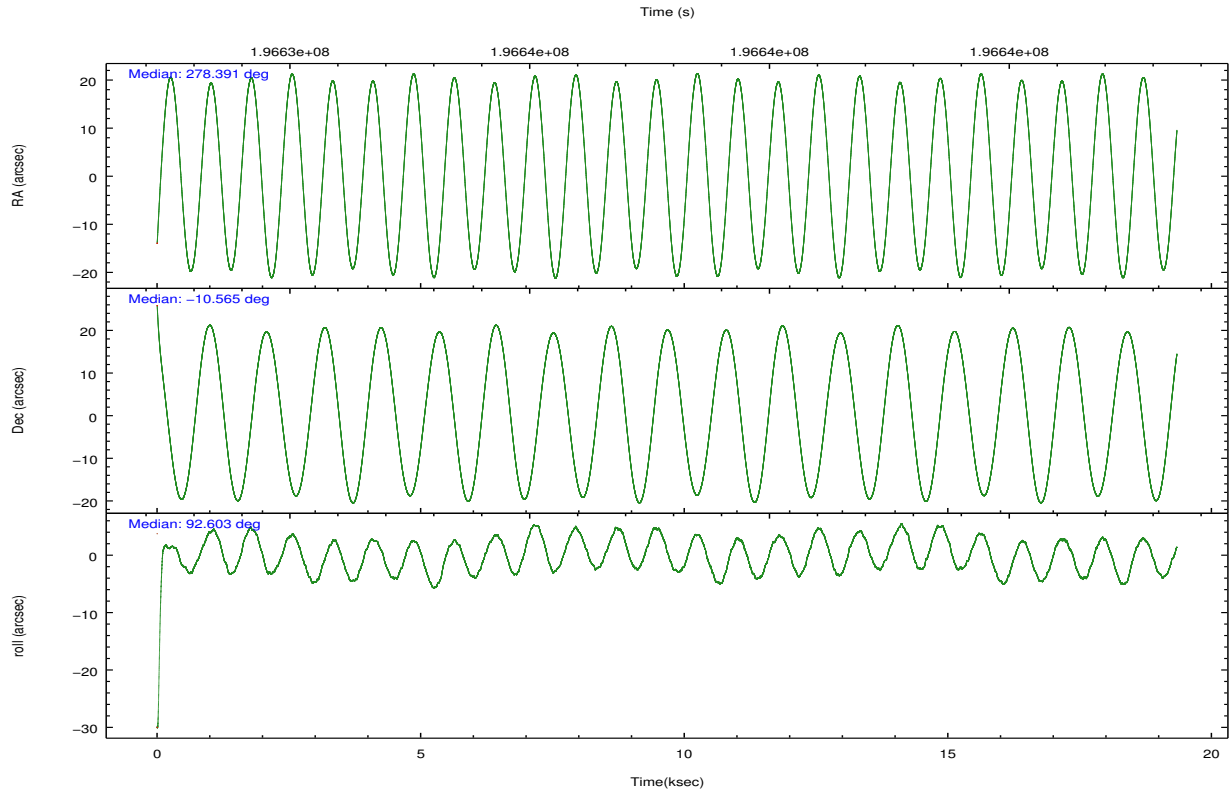
	segment 0
level 1 events	893775
rejected events	8442
rejected %	0%

2.2 Compared Parameters

Parameter	Planned	Actual	Parameter	Planned	Actual
Instrument	HRC	HRC	Obspar format version number	7	7
Detector	HRC-I	HRC-I	Obspar file type	PREDICTED	ACTUAL
Grating	NONE	NONE	Obspar update status	NONE	UPDATED
Data mode	OBSERVING	OBSERVING			
Observation mode	POINTING	POINTING			
[deg] Pointing RA	278.406431	278.3910449650543			
[deg] Pointing Dec	-10.587100	-10.56466236685201			
[deg] Pointing Roll	92.703092	92.60476137197159			
[s] Window start time (MET)	194486464.184000	194486464.184000			
[s] Window stop time (MET)	197078464.184000	197078464.184000			
[mm] SIM focus pos	-1.040293	-1.038866356238299			
[mm] SIM defocus	0	0.001426264420575141			
[mm] SIM translation stage pos	126.985494	126.9829799899862			
[mm] SIM translation stage offset	0	0.002508901615314585			
[s] Observation start time (MET)	196628339.184000	196627412.33077			
Observation start date	2004-03-25T18:57:55	2004-03-25T18:43:32			
[s] Observation end time (MET)	196647539.184000	196647678.11916			
Observation end date	2004-03-26T00:17:55	2004-03-26T00:21:18			

2.3 Aspect



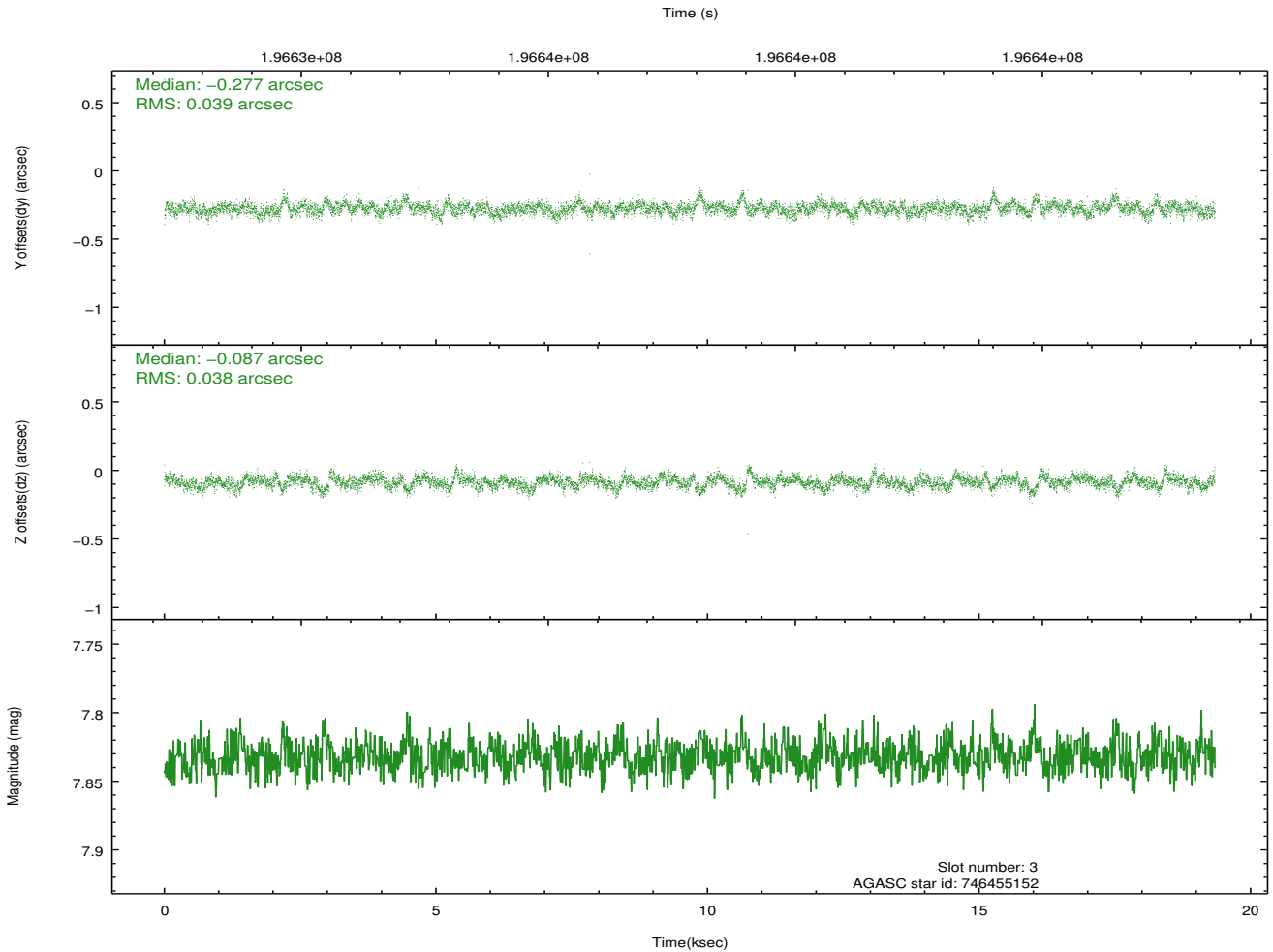
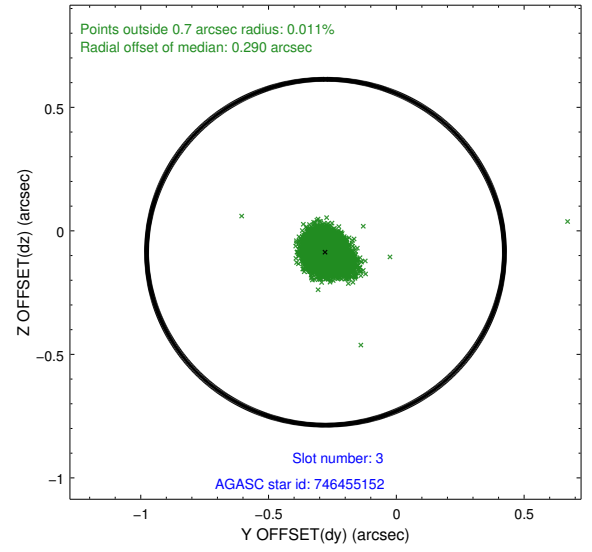
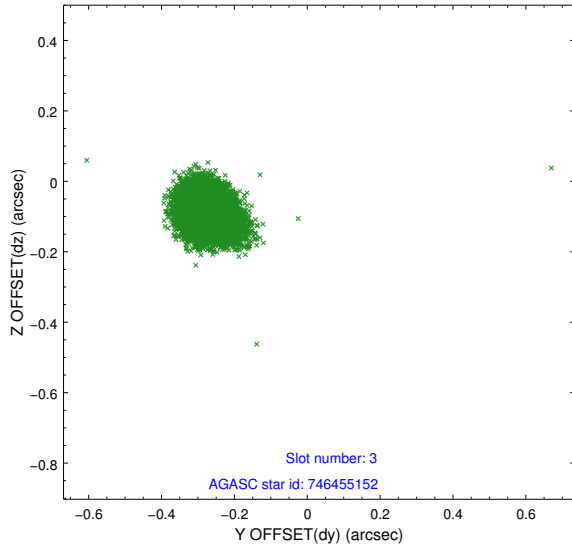


Slot Statistics

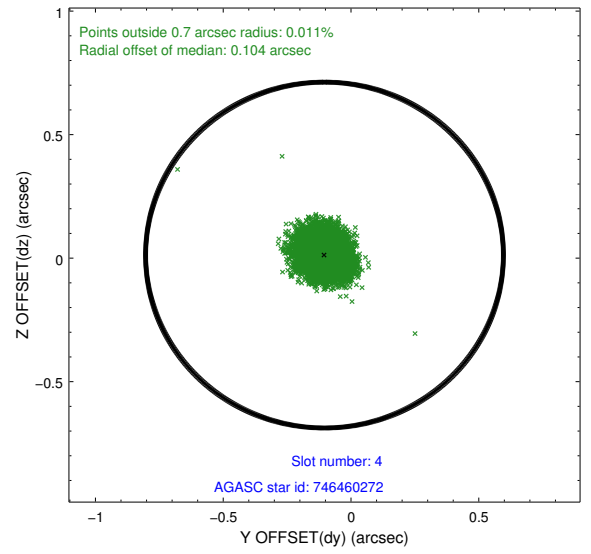
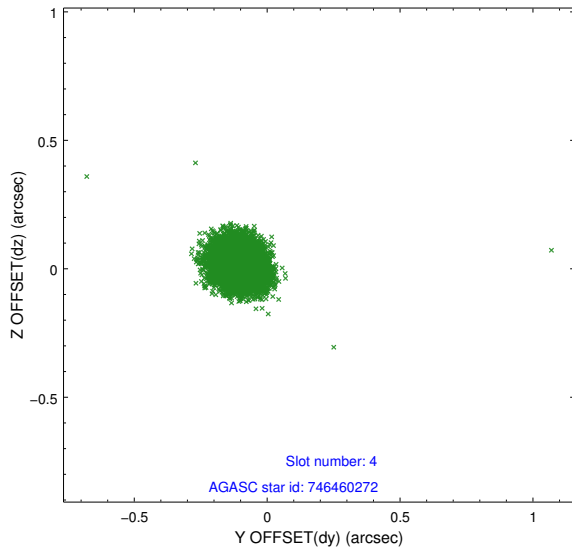
slot	status	id	mag	n_pts	med_dy	med_dz	dr1	dr2	ra	dec	mean_y	mean_z
0	FID	HRC-I-1	6.99	4719	-0.028	0.033	0.011	0.016	0.000000	0.000000	-763.61	-1297.85
1	FID	HRC-I-2	7.03	4719	0.129	-0.067	0.008	0.013	0.000000	0.000000	849.01	-1299.78
2	FID	HRC-I-3	7.08	4718	0.019	-0.055	0.007	0.012	0.000000	0.000000	-1191.89	1006.35
3	GUIDE	746455152	7.83	9435	-0.277	-0.087	0.056	0.095	278.447893	-9.976732	2188.37	-250.25
4	GUIDE	746460272	8.94	9436	-0.104	0.012	0.072	0.119	278.847488	-10.152127	1490.27	-1634.77
5	GUIDE	746461728	9.76	9428	0.037	0.083	0.127	0.210	278.986921	-10.530755	104.78	-2061.59
6	GUIDE	746462392	8.54	9435	0.165	0.142	0.083	0.135	279.038421	-10.890715	-1199.39	-2180.45
7	GUIDE	746462456	8.38	9434	0.181	-0.143	0.074	0.116	278.652171	-10.530173	163.56	-878.67

2.4 Star Slots

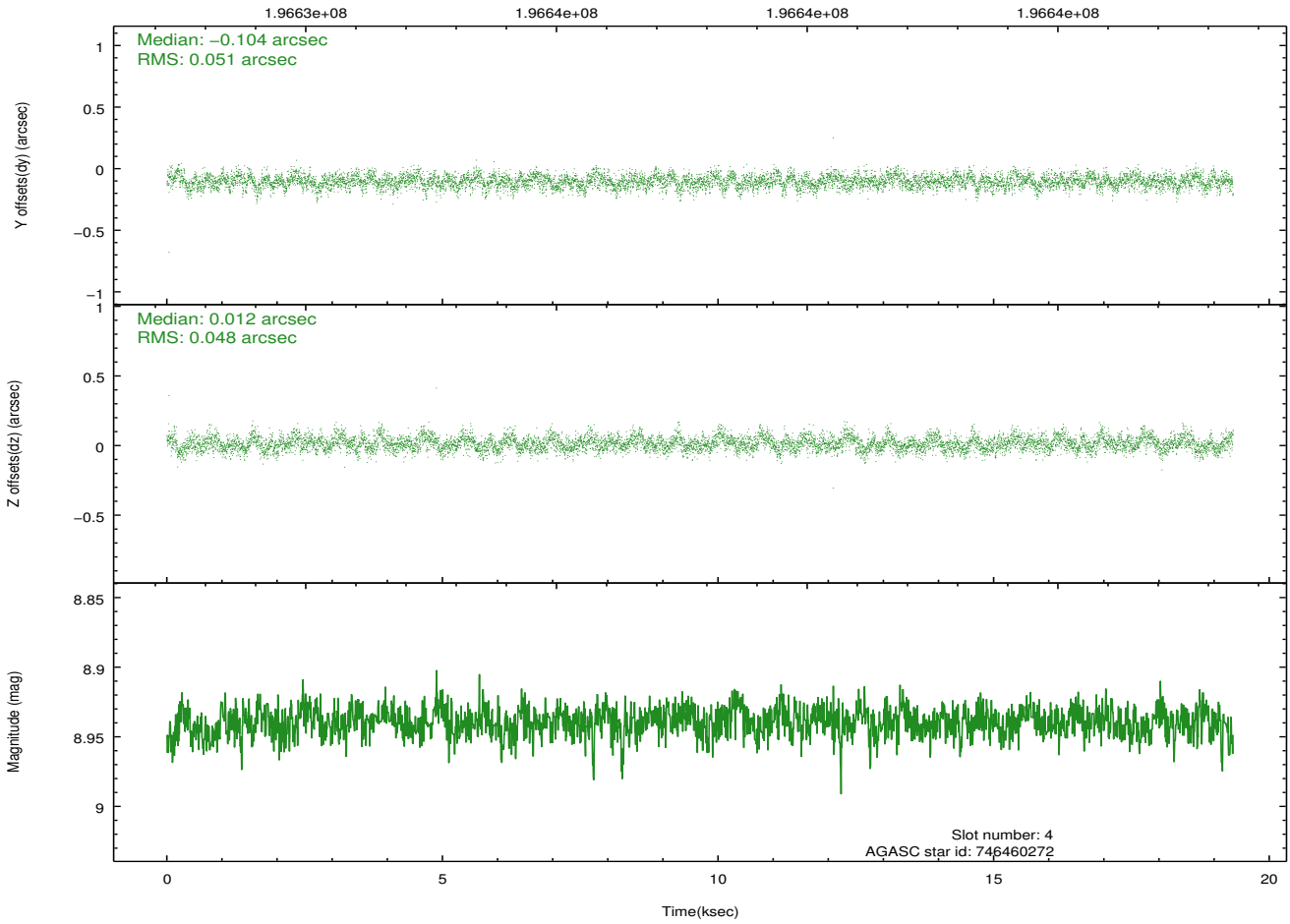
2.4.1 Slot 3



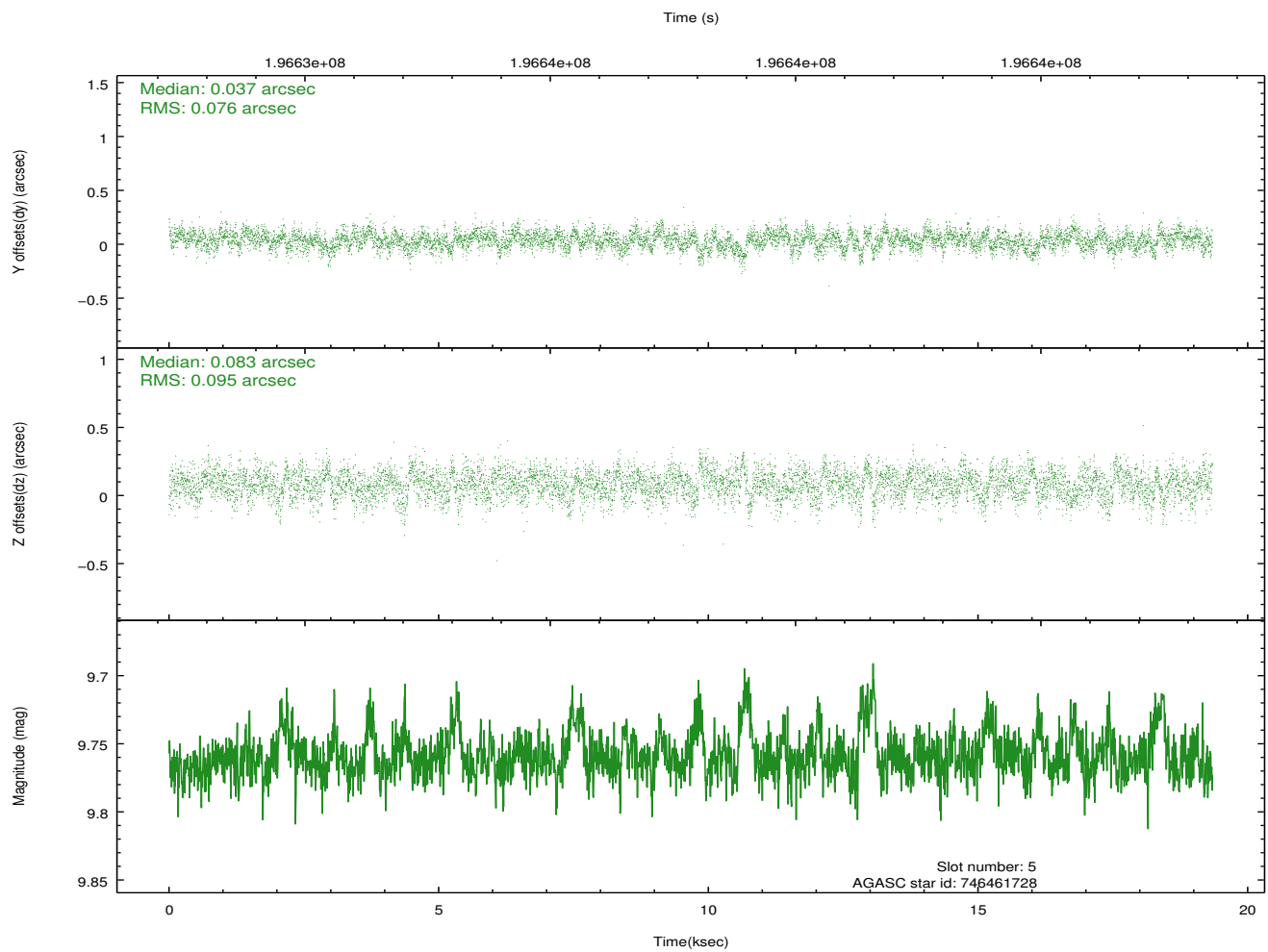
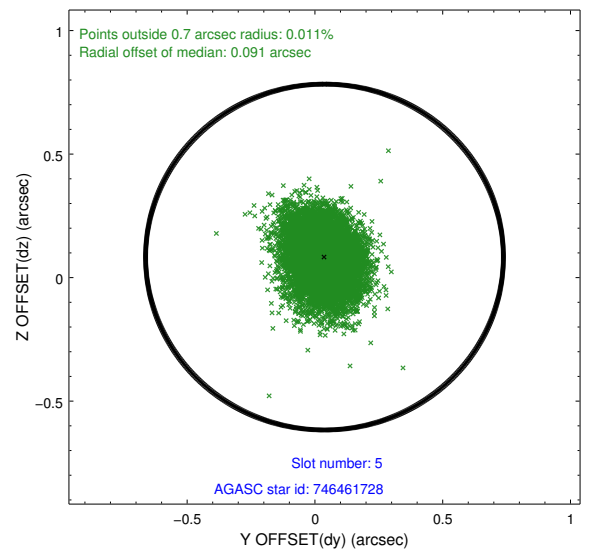
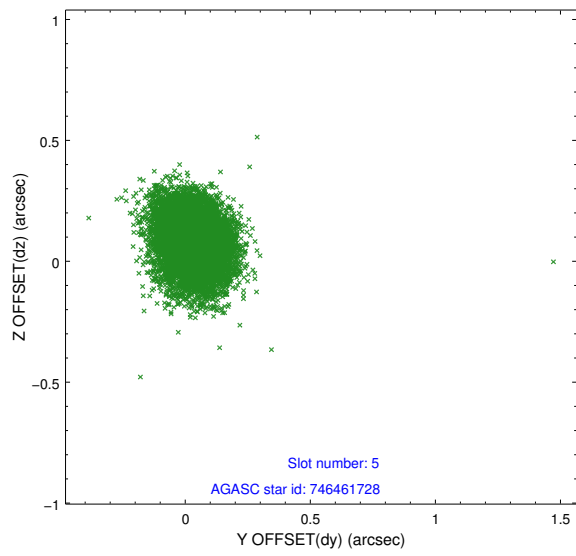
2.4.2 Slot 4



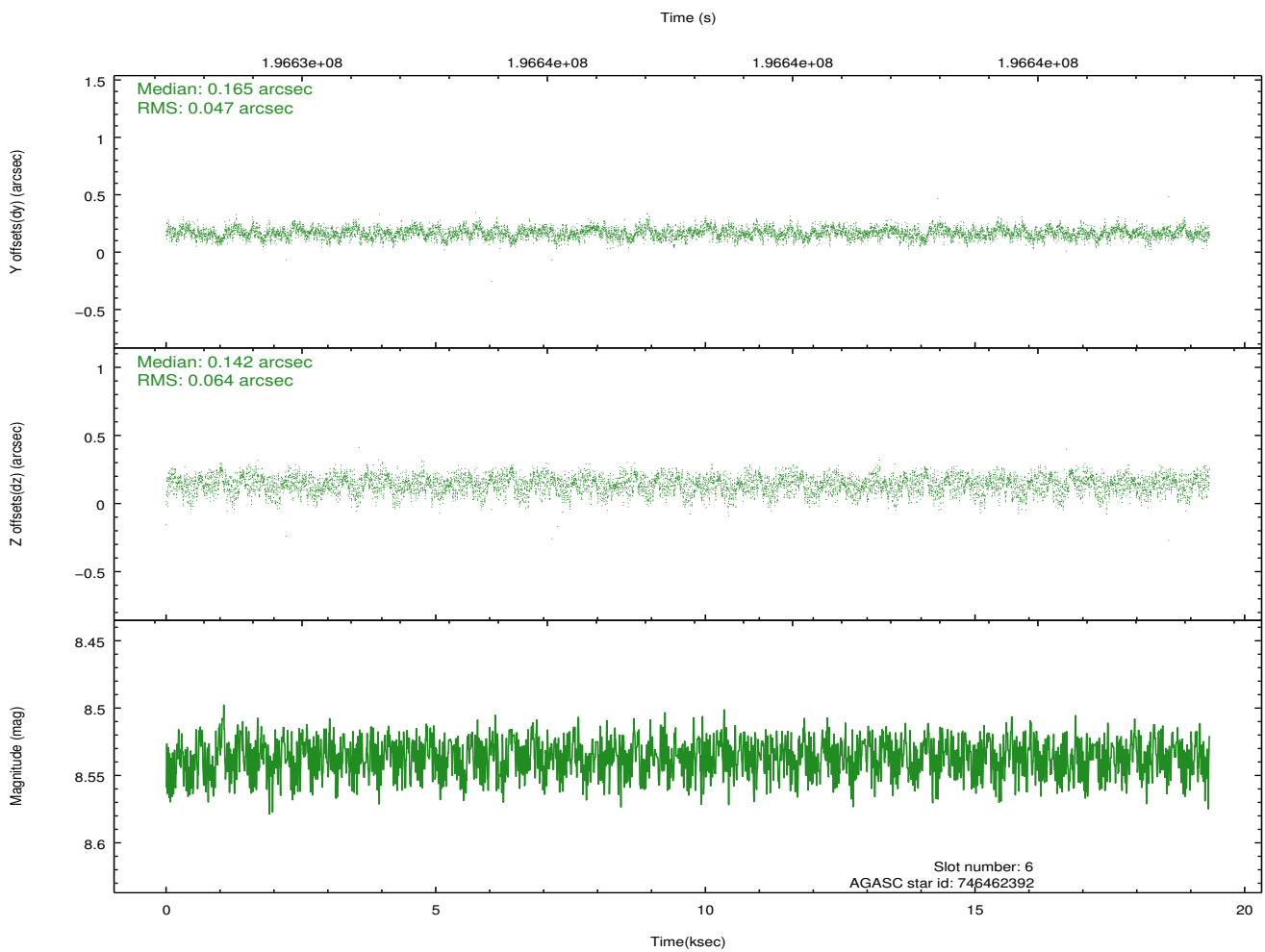
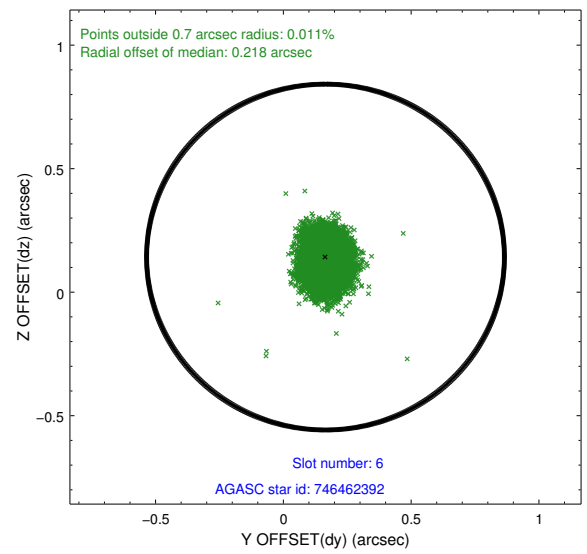
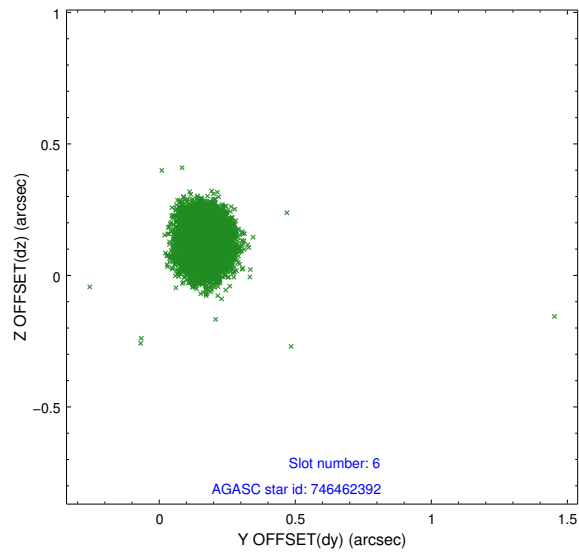
Time (s)



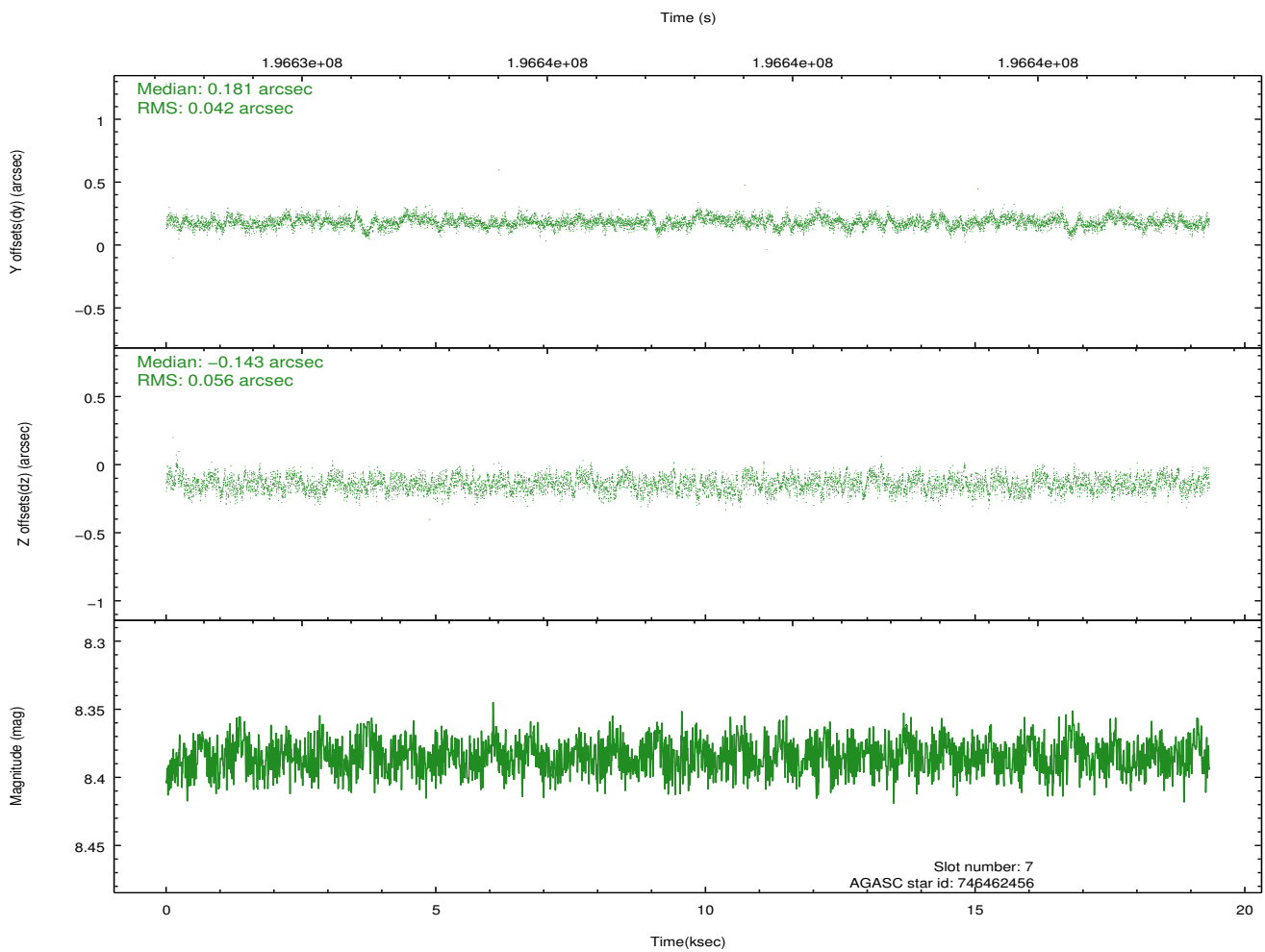
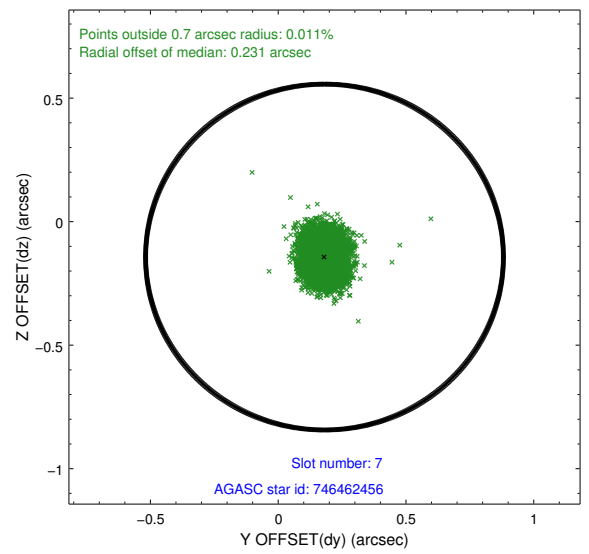
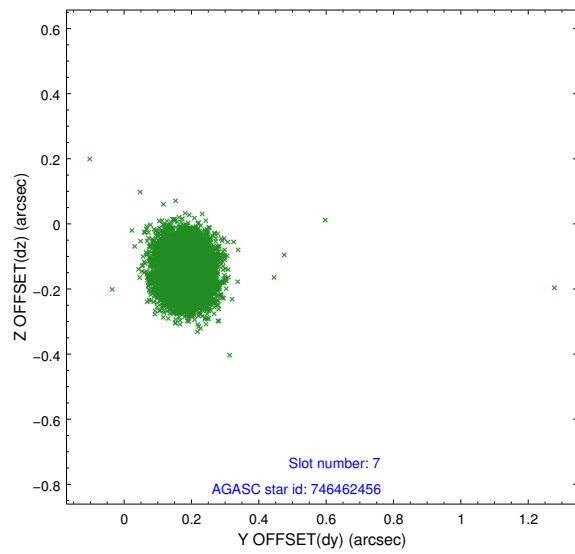
2.4.3 Slot 5



2.4.4 Slot 6

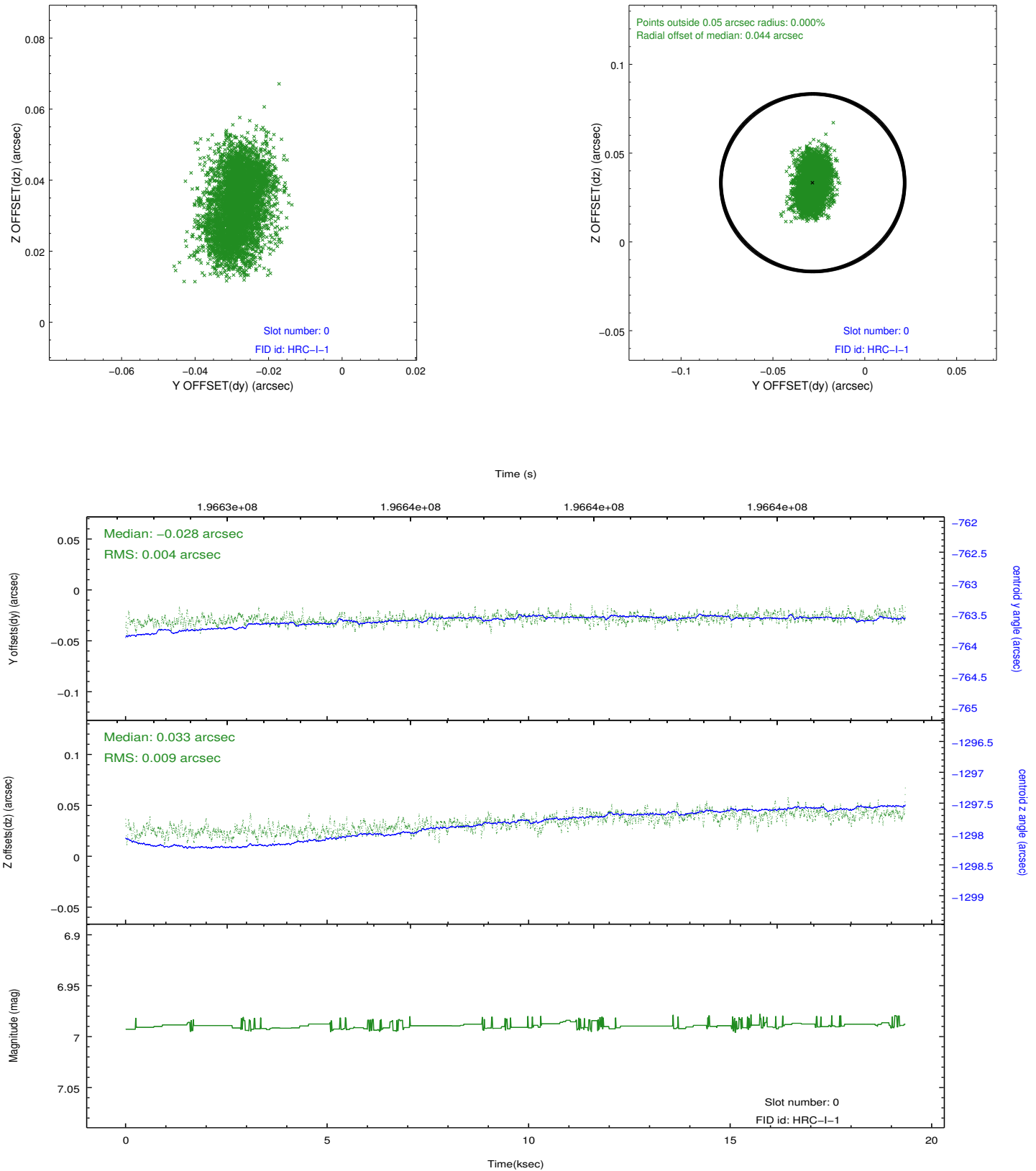


2.4.5 Slot 7

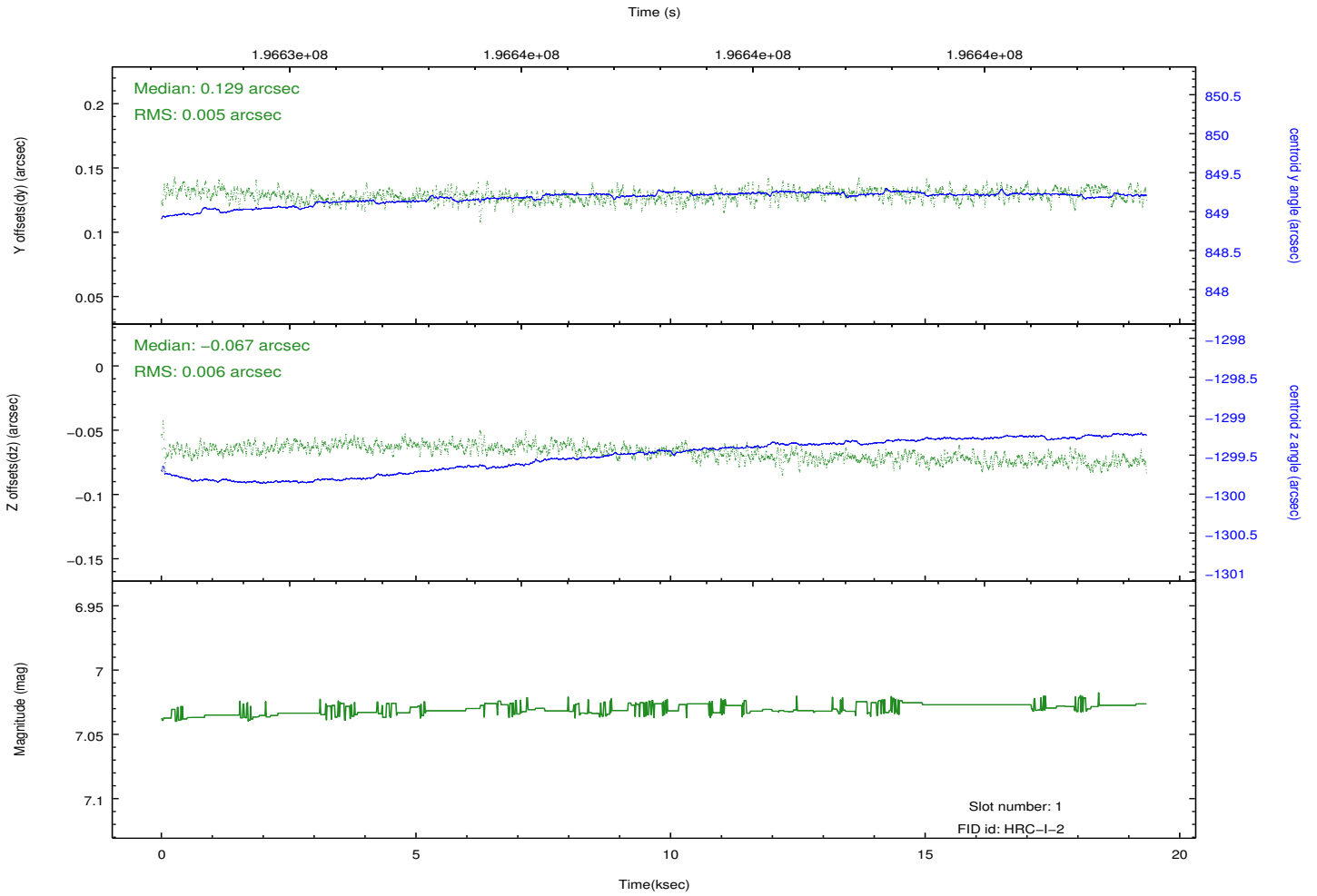
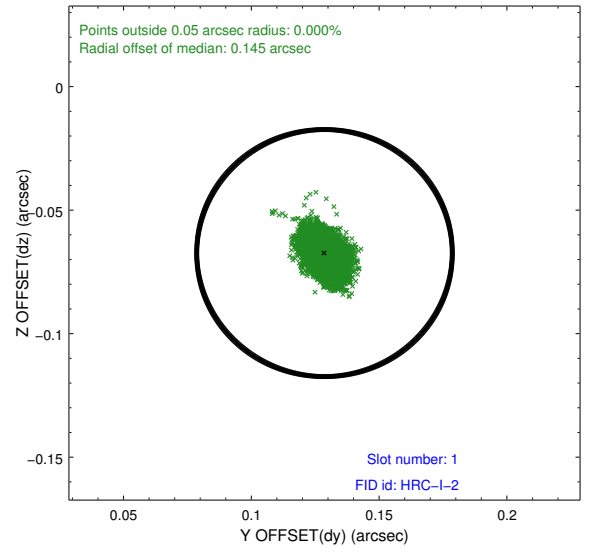
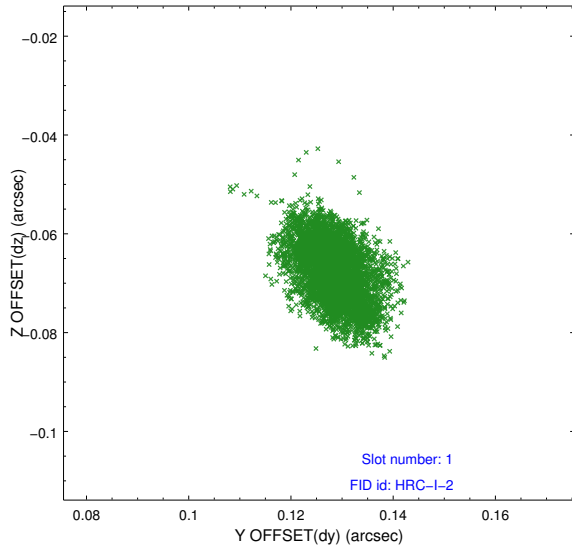


2.5 FID Slots

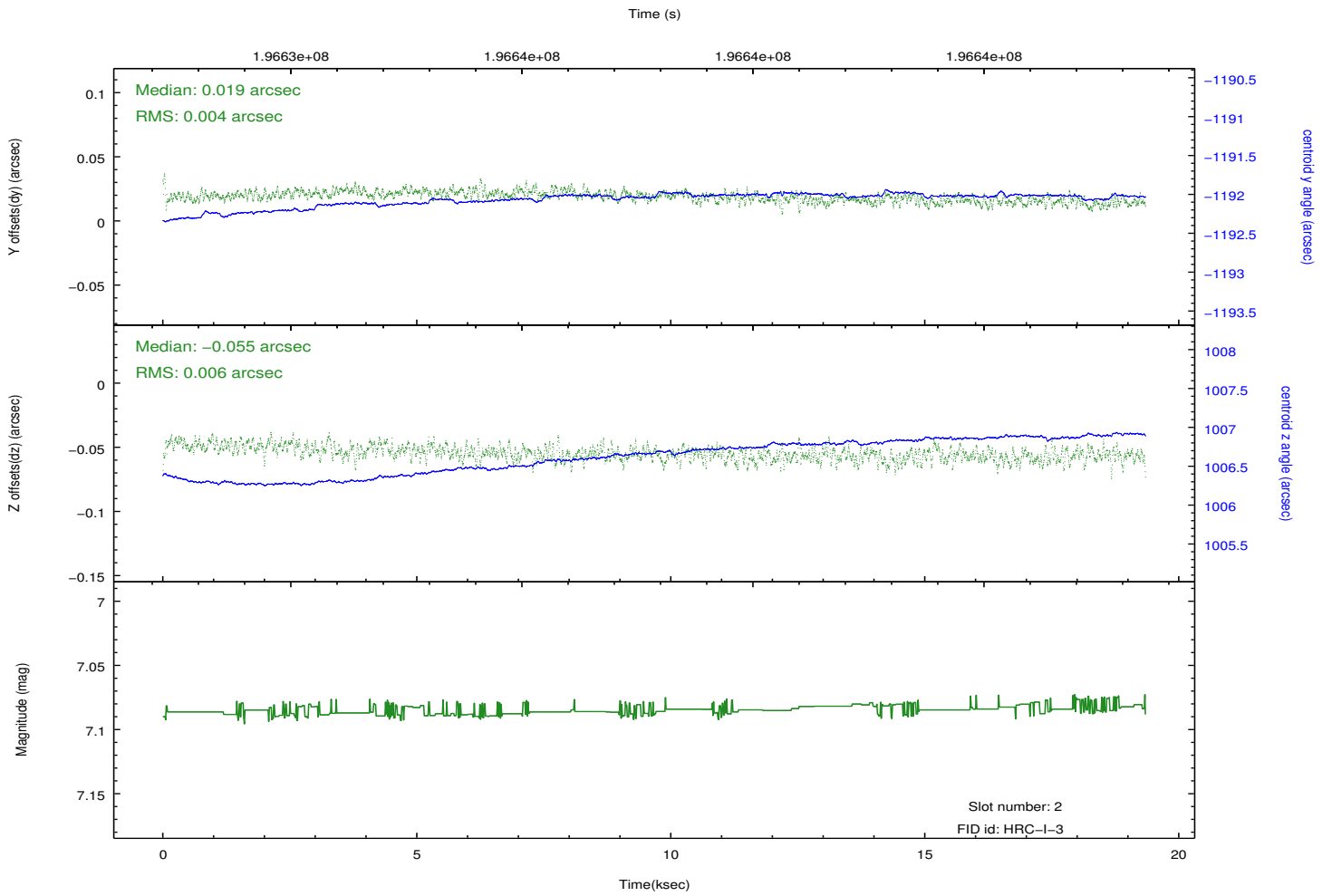
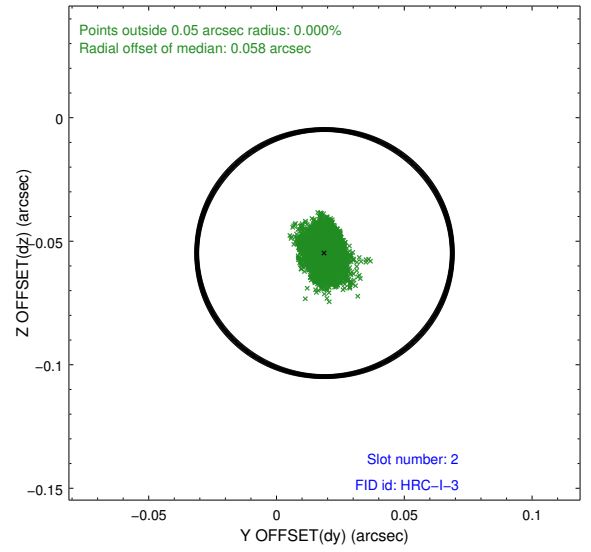
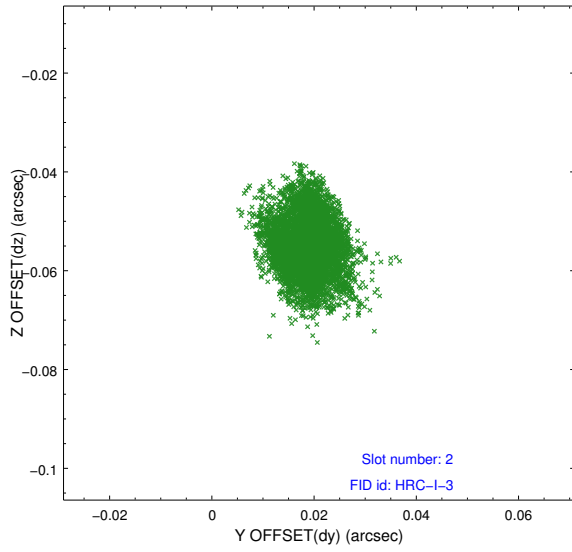
2.5.1 Slot 0



2.5.2 Slot 1



2.5.3 Slot 2



A Summary

A.1 Status

V&V Scientist	Jen Lauer
V&V Date (YYYY-MM-DD)	2012.12.13
V&V Edition	1
V&V Disposition and Status	OK
V&V Charge Time	19.183

A.2 Comments

Window constraint satisfied.