

V&V Reference Report

L2 ASCDS Version : 8.4.5

Observation 517 - L2 Version 4
Chandra X-Ray Center

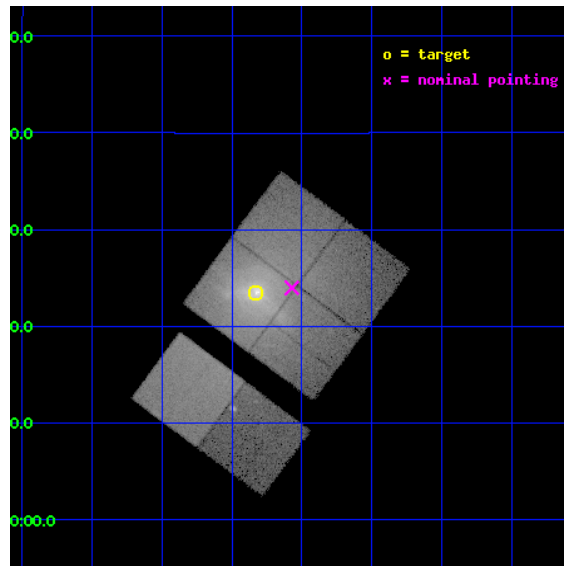
L2 Processing Date : Aug 25 2012

Contents

1	Front	2
2	OBI	3
2.1	OBI	3
2.1.1	Images	3
2.1.2	Bias	3
2.1.3	Parameters	4
2.1.4	Events	4
2.2	Compared Parameters	5
2.3	Aspect	6
2.4	Star Slots	9
2.4.1	Slot 3	9
2.4.2	Slot 4	10
2.4.3	Slot 5	11
2.4.4	Slot 6	12
2.4.5	Slot 7	13
2.5	FID Slots	14
2.5.1	Slot 0	14
2.5.2	Slot 1	15
2.5.3	Slot 2	16
A	Summary	17
A.1	Status	17
A.2	Comments	17

1 Front

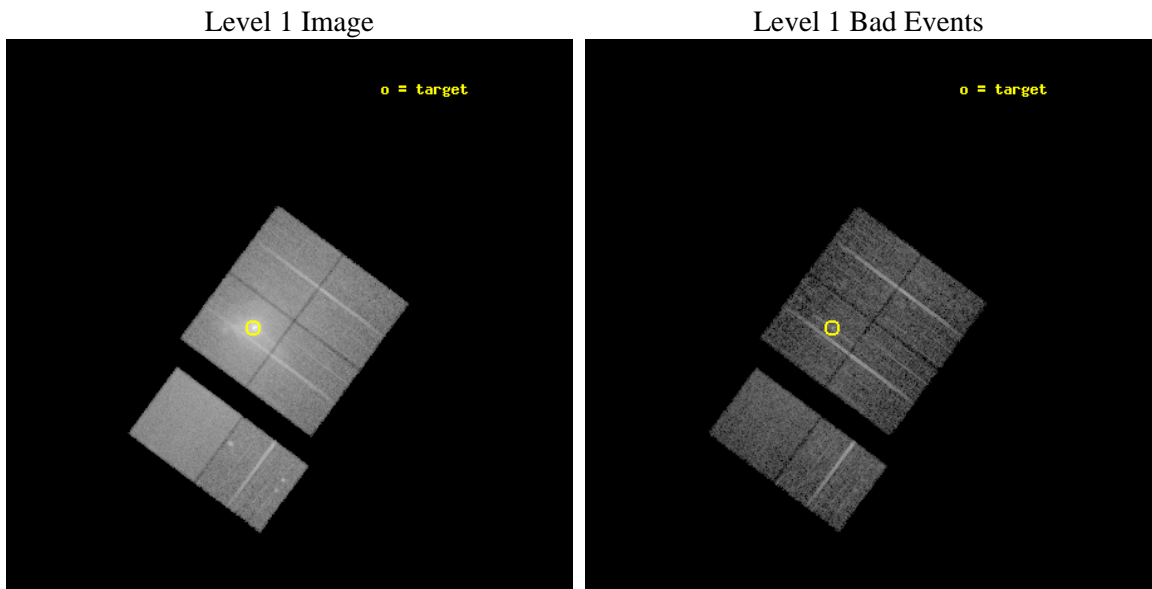
seq_num	800025	Sequence number
obs_id	517	Observation id
title	THE COOLING FLOW IN THE VIRGO CLUSTER AROUND M87	Proposal title
observer	Professor Andrew Fabian	Principal investigator
object	VIRGO CLUSTER	Source name
dtycycle	0	
cycle	P	events from which exps? Prim/Second/Both
ra_targ	187.7075	Observer's specified target RA [deg]
dec_targ	12.392222	Observer's specified target Dec [deg]
ra_nom	187.64289960586	Nominal RA [deg]
dec_nom	12.399889772654	Nominal Dec [deg]
roll_nom	216.61429911386	Nominal Roll [deg]
revision	4	Processing version of data
ontime	7081.6513303667	Sum of GTIs [s]
liveltime	6991.9791971631	Livetime [s]
ontime0	8250.8734710664	Sum of GTIs [s]
ontime1	8170.6162966937	Sum of GTIs [s]
ontime2	7512.699571833	Sum of GTIs [s]
ontime3	7081.6513303667	Sum of GTIs [s]
ontime6	8692.4117838144	Sum of GTIs [s]
ontime7	9862.4000091702	Sum of GTIs [s]
l2events	392616	Number of level 2 events



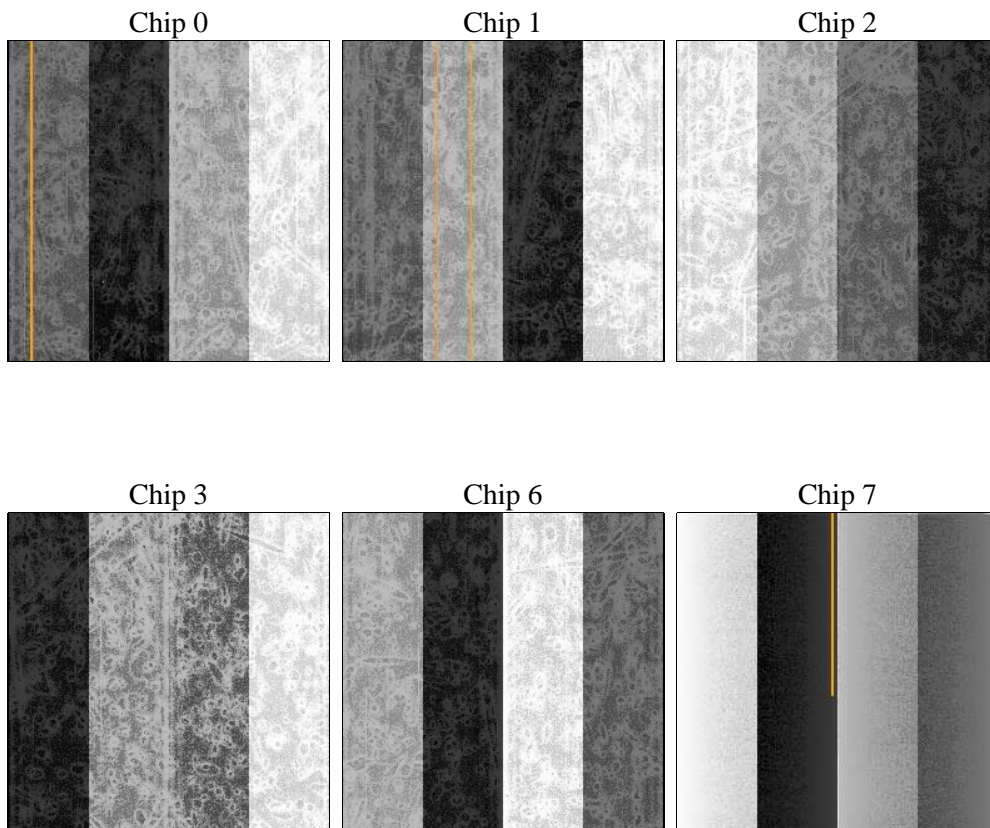
2 OBI

2.1 OBI

2.1.1 Images



2.1.2 Bias



2.1.3 Parameters

obi_num	0	Obi number	sched_exp_time	10231.848000	[s] Scheduled observation exposure time
ascdsver	8.4.5	Processing system revision	ontime	7081.6513303667	Sum of GTIs [s]
caldbver	4.5.1.1	 	ontime0	8250.8734710664	Sum of GTIs [s]
date	2012-08-25T15:46:21	Date and time of file creation	ontime1	8170.6162966937	Sum of GTIs [s]
revision	4	Processing version of data	ontime2	7512.699571833	Sum of GTIs [s]
			ontime3	7081.6513303667	Sum of GTIs [s]
			ontime6	8692.4117838144	Sum of GTIs [s]
			ontime7	9862.4000091702	Sum of GTIs [s]
			l1events	710654	Number of level 1 events

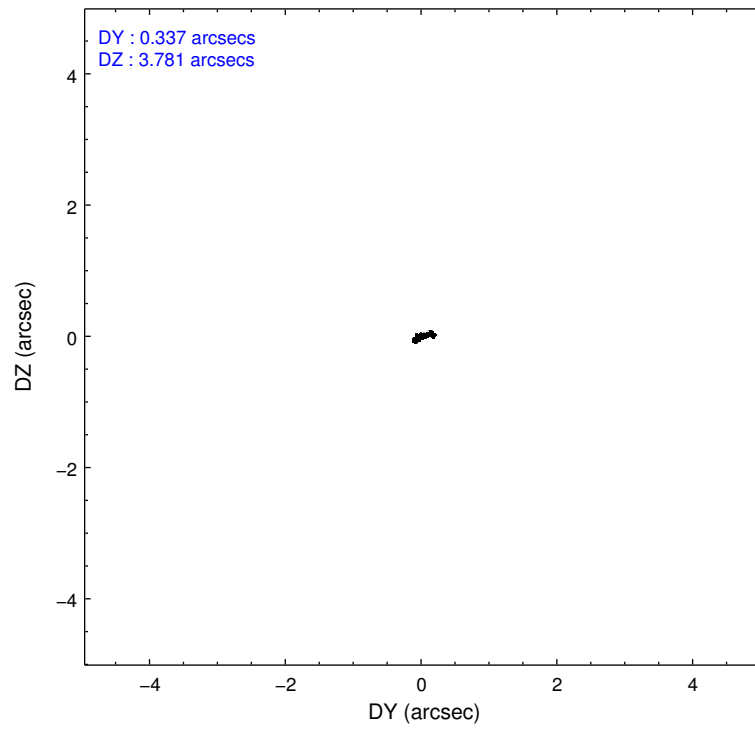
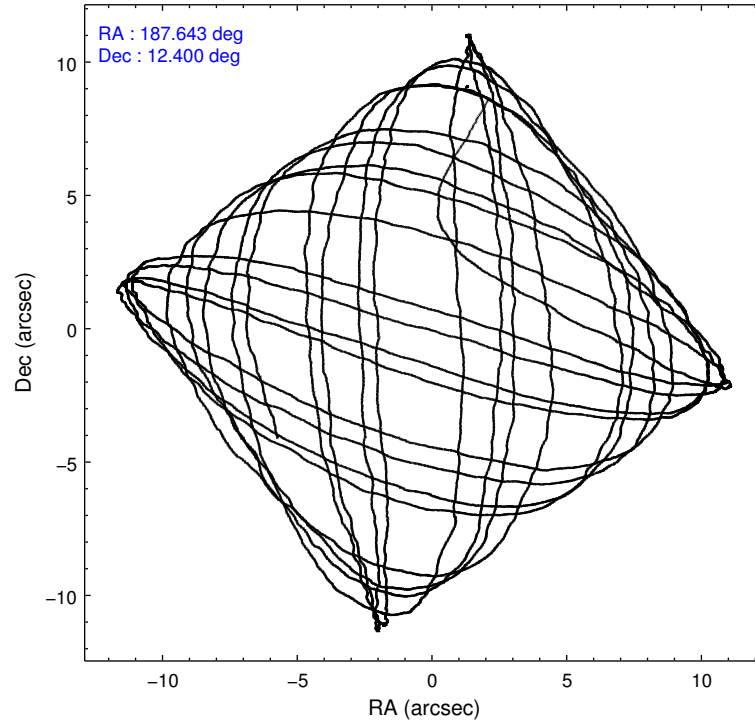
2.1.4 Events

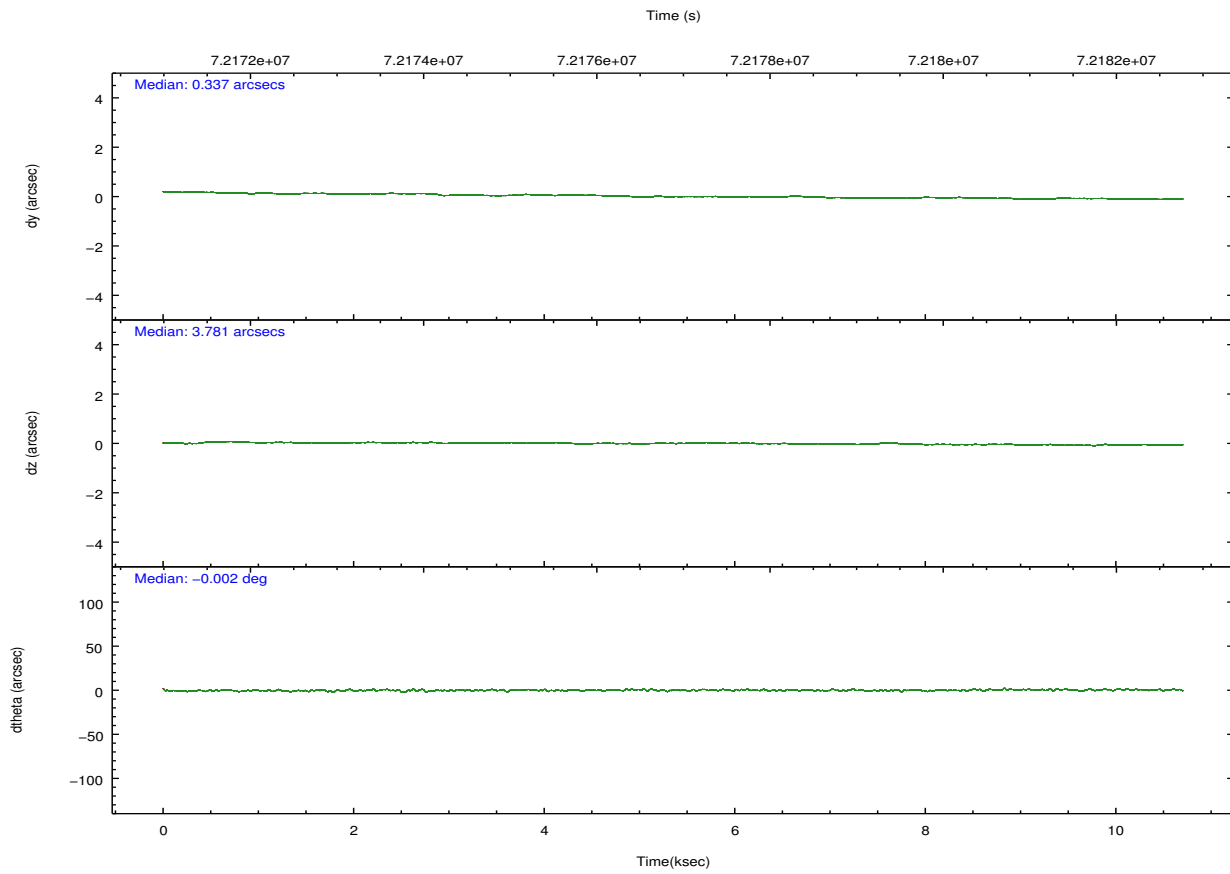
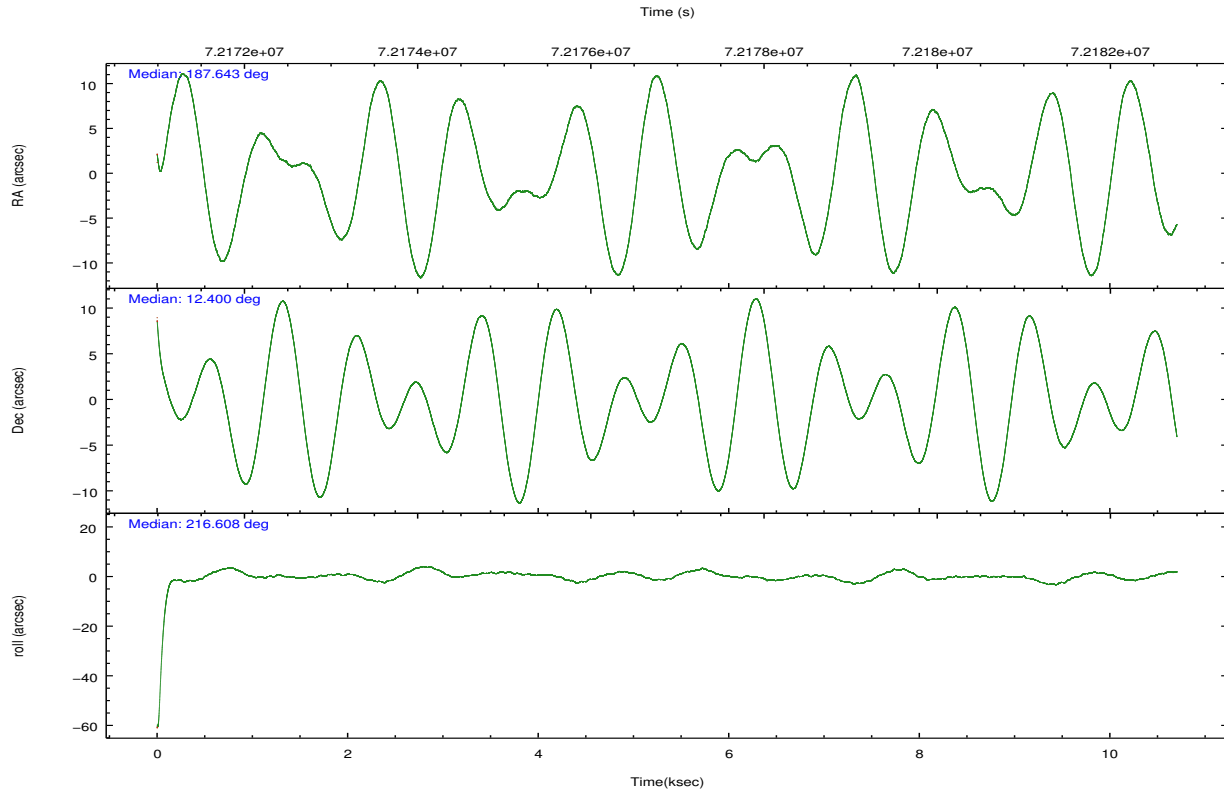
	ccd 0	ccd 1	ccd 2	ccd 3	ccd 6	ccd 7		ccd 0	ccd 1	ccd 2	ccd 3	ccd 6	ccd 7
level 1 events	82053	104436	101835	219226	80962	122142	grade 0 events	26433	44558	42658	144155	17017	16614
rejected events	47509	48028	48918	47584	57234	48070		32%	42%	41%	65%	21%	13%
rejected %	57%	45%	48%	21%	70%	39%	grade 1 events	121	200	232	905	114	86
								0%	0%	0%	0%	0%	0%
							grade 2 events	3874	5768	5096	15454	2943	17066
								4%	5%	5%	7%	3%	13%
							grade 3 events	1399	2007	1747	4503	1088	7738
								1%	1%	1%	2%	1%	6%
							grade 4 events	1300	1989	1682	4514	1098	7656
								1%	1%	1%	2%	1%	6%
							grade 5 events	2026	2113	1771	2264	2402	8234
								2%	2%	1%	1%	2%	6%
							grade 6 events	1558	2137	1763	3157	1596	25051
								1%	2%	1%	1%	1%	20%
							grade 7 events	45342	45664	46886	44274	54704	39697
								55%	43%	46%	20%	67%	32%

2.2 Compared Parameters

Parameter	Planned	Actual	Parameter	Planned	Actual
Instrument	ACIS	ACIS	Obspar format version number	7	7
Detector	ACIS-012367	ACIS-012367	Obspar file type	PREDICTED	ACTUAL
Grating	NONE	NONE	Obspar update status	NONE	UPDATED
Data mode	VFAINT	VFAINT	Number of optional ACIS chips dropped	0	0
Observation mode	POINTING	POINTING	On-chip summing requested	N	N
[deg] Pointing RA	187.654263	187.6428996058634	Subarray requested	NONE	NONE
[deg] Pointing Dec	12.425119	12.39988977265406	Alternating exposures requested	N	N
[deg] Pointing Roll	216.403244	216.6142991138552	[s] Primary exposure time	0.000000	3.2
[mm] SIM focus pos	-0.782348	-0.7809083437167272			
[mm] SIM defocus	0	0.001439871863259334			
[mm] SIM translation stage pos	-233.592463	-233.5899487761303			
[mm] SIM translation stage offset	0	-0.002504226799430853			
[s] Observation start time (MET)	72172006.184000	72171059.108624			
Observation start date	2000-04-15T07:45:42	2000-04-15T07:30:59			
[s] Observation end time (MET)	72182238.184000	72182547.309046			
Observation end date	2000-04-15T10:36:14	2000-04-15T10:42:27			
Read mode	TIMED	TIMED			

2.3 Aspect



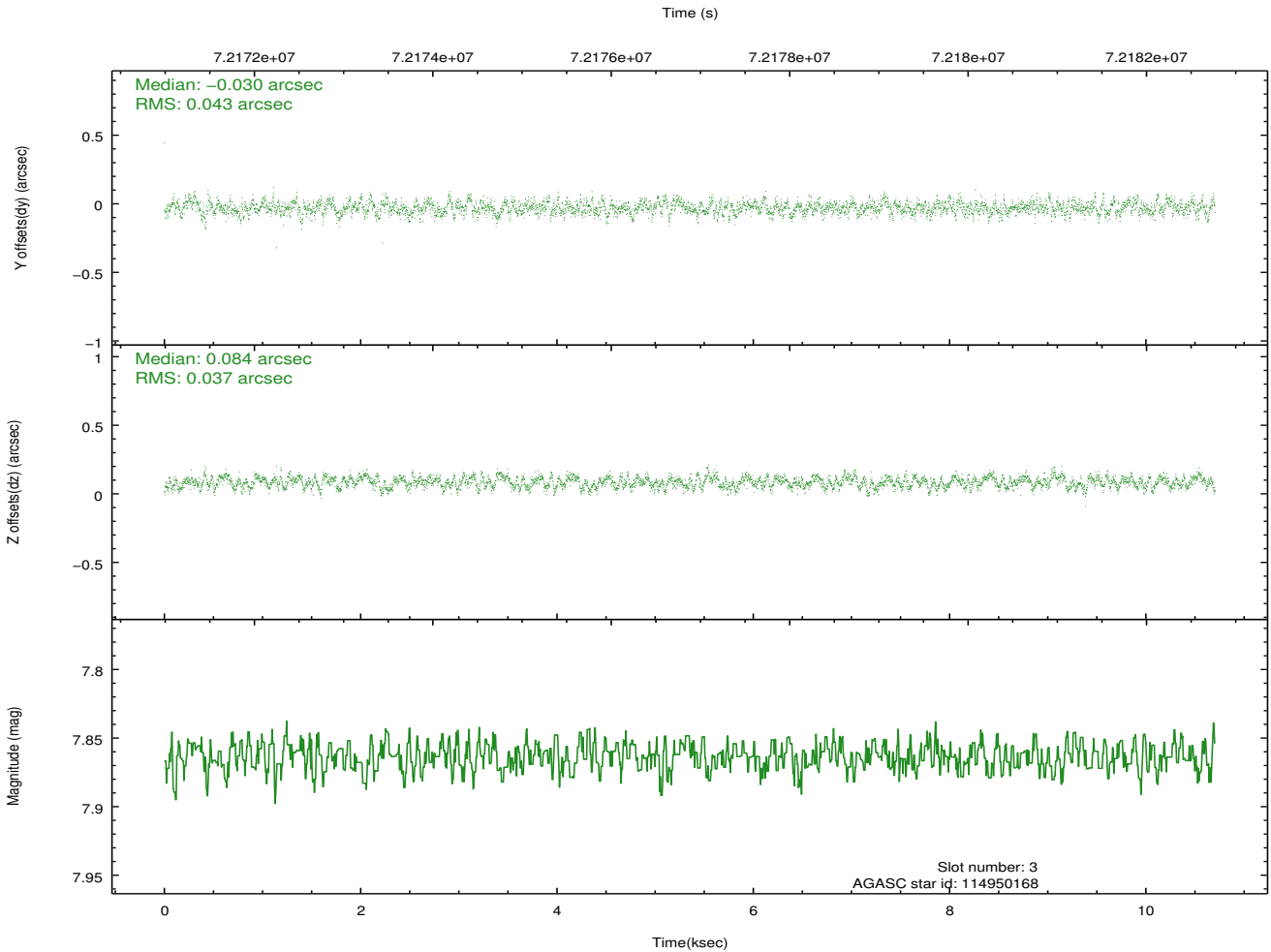
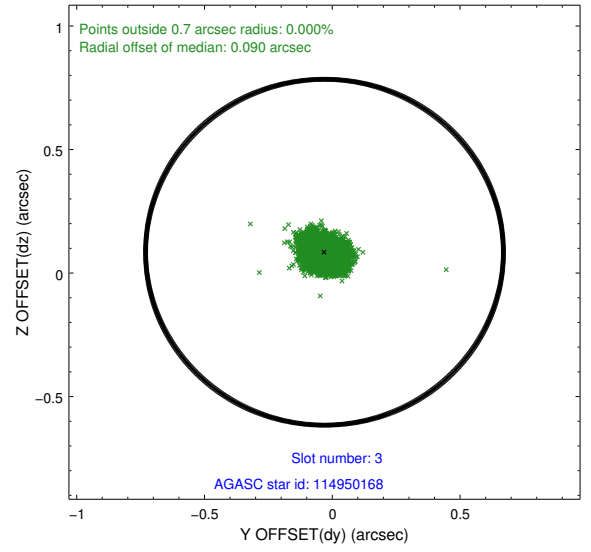
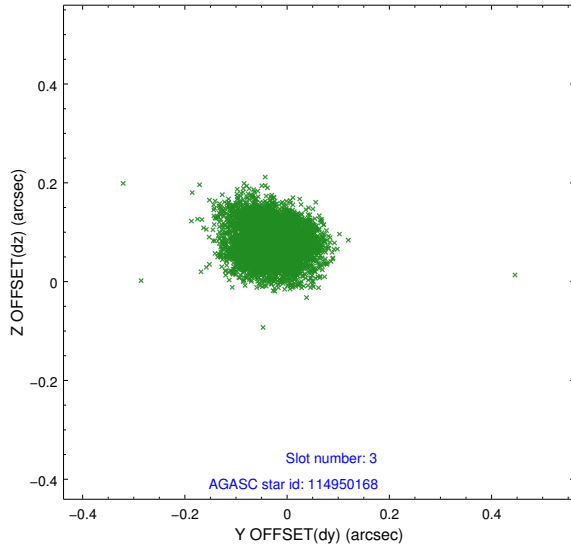


Slot Statistics

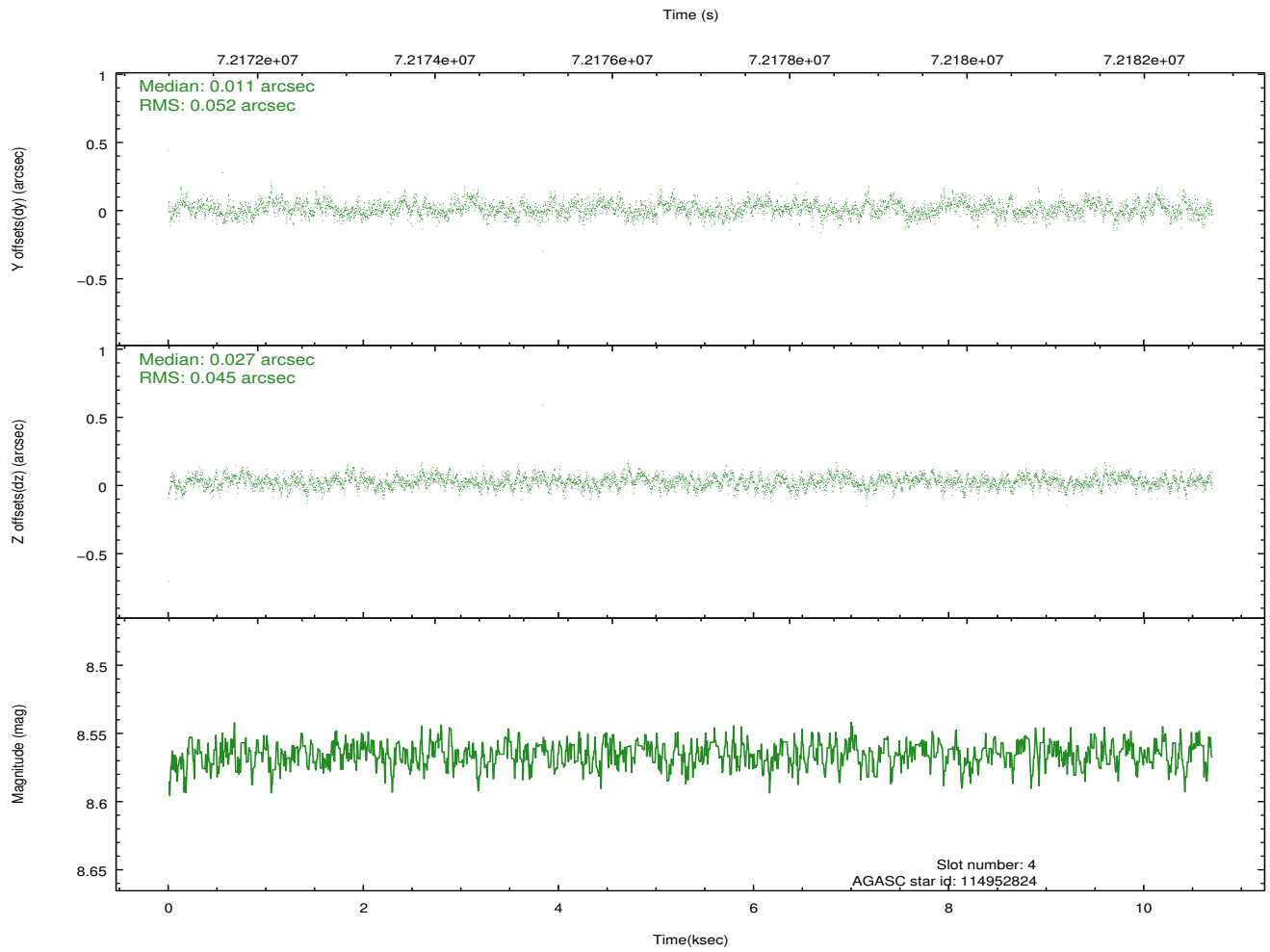
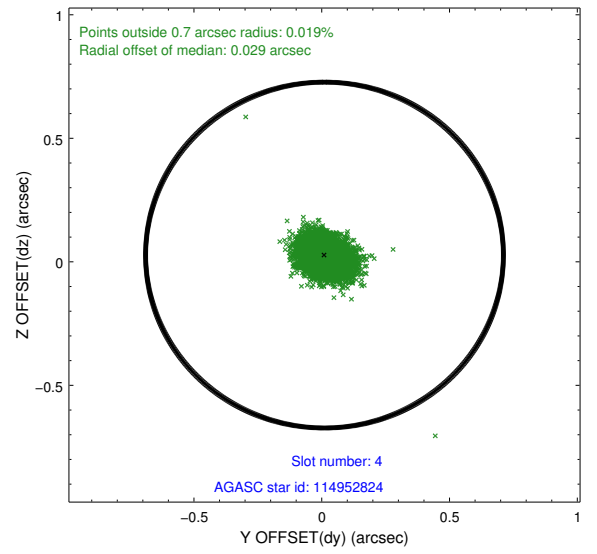
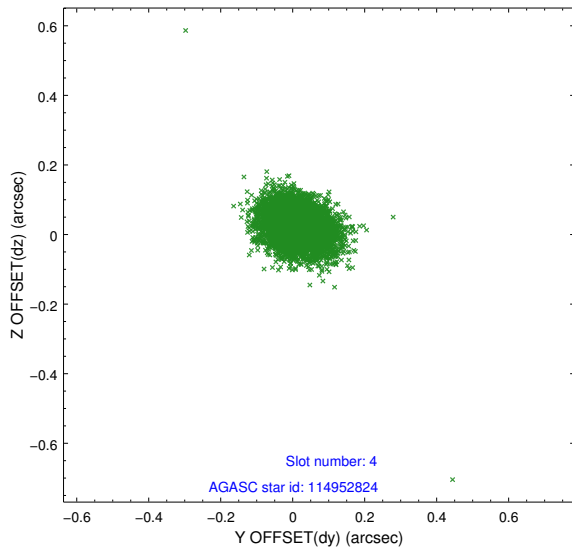
slot	status	id	mag	n_pts	med_dy	med_dz	dr1	dr2	ra	dec	mean_y	mean_z
0	FID	ACIS-I-2	7.15	2611	-0.039	-0.030	0.009	0.015	0.000000	0.000000	-754.70	-833.42
1	FID	ACIS-I-4	7.20	2611	0.002	0.038	0.007	0.012	0.000000	0.000000	2159.19	1072.56
2	FID	ACIS-I-5	7.23	2611	-0.064	0.061	0.009	0.015	0.000000	0.000000	-1807.92	1071.01
3	GUIDE	114950168	7.86	5221	-0.030	0.084	0.060	0.097	187.143398	12.117441	2105.31	-176.97
4	GUIDE	114952824	8.57	5222	0.011	0.027	0.071	0.117	187.703904	12.486727	-269.90	-75.28
5	GUIDE	114950584	9.20	5220	-0.085	-0.047	0.077	0.129	187.487323	11.827248	1752.16	1382.98
6	GUIDE	114952792	9.50	5222	0.030	-0.057	0.091	0.145	187.070263	12.344747	1825.64	-987.67
7	GUIDE	114956608	9.68	5219	0.075	-0.005	0.099	0.155	187.452443	11.725979	2068.17	1603.16

2.4 Star Slots

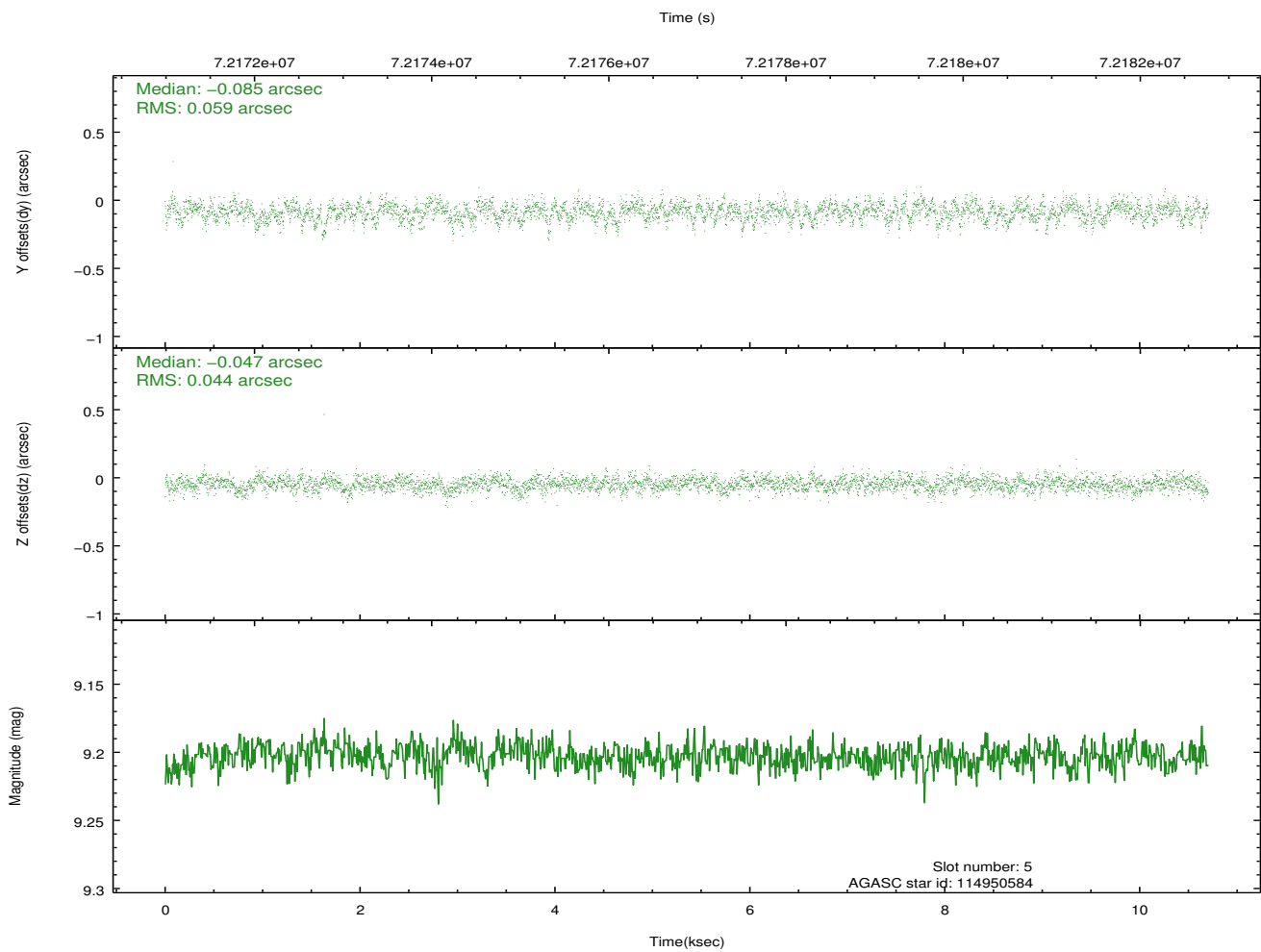
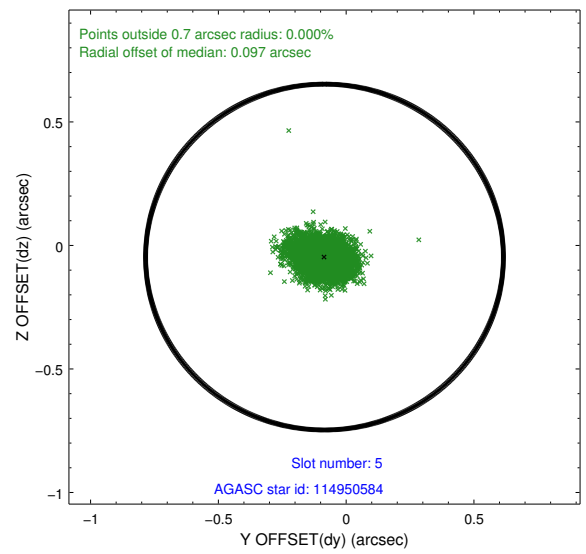
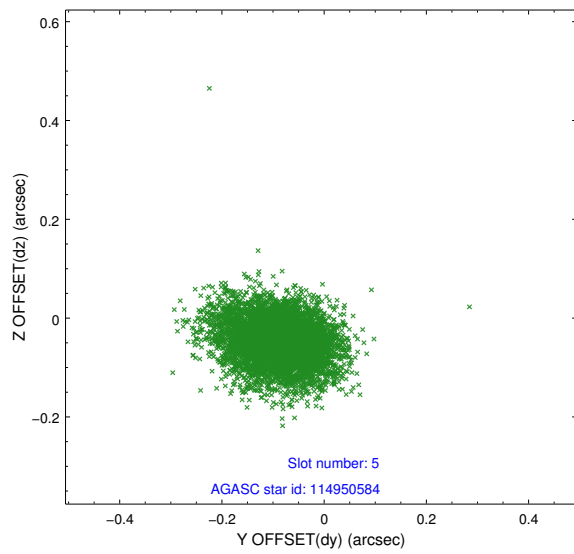
2.4.1 Slot 3



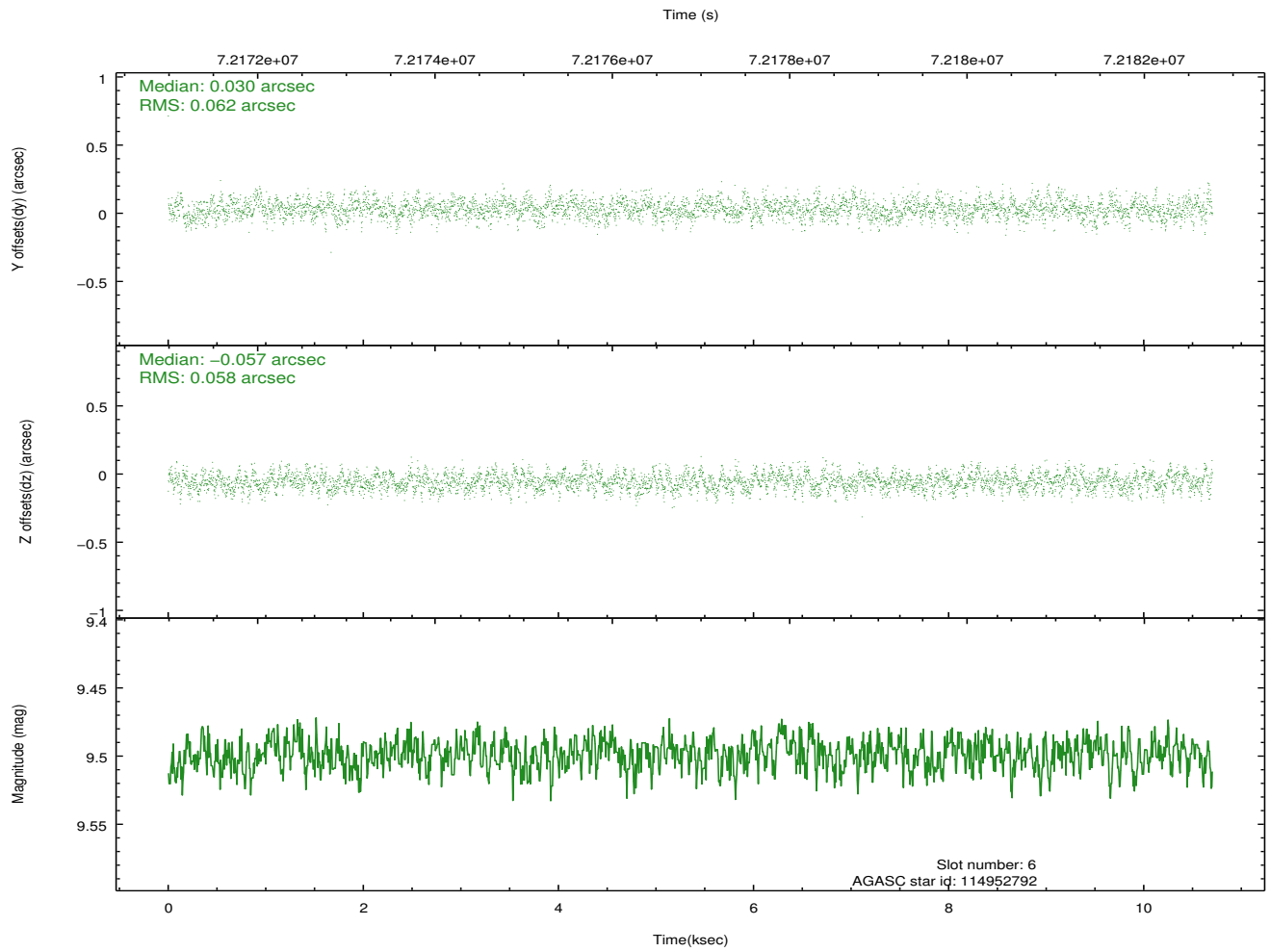
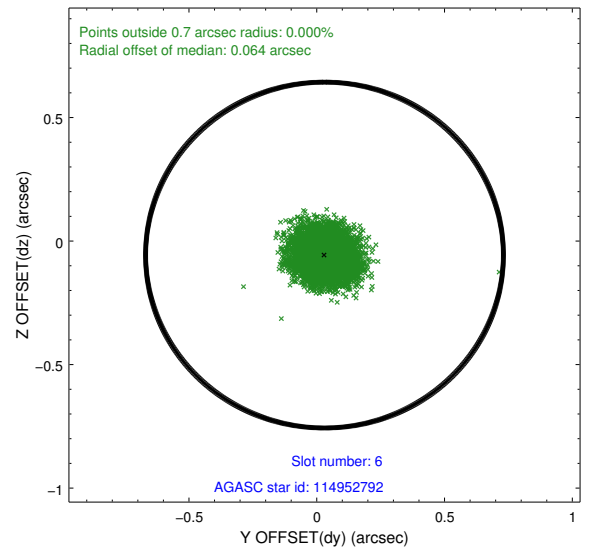
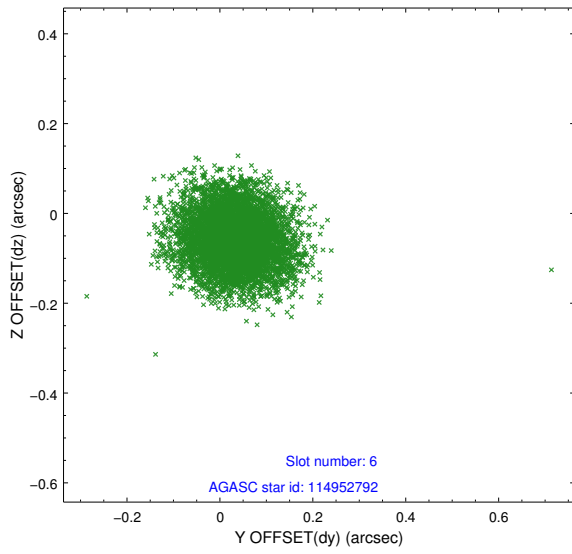
2.4.2 Slot 4



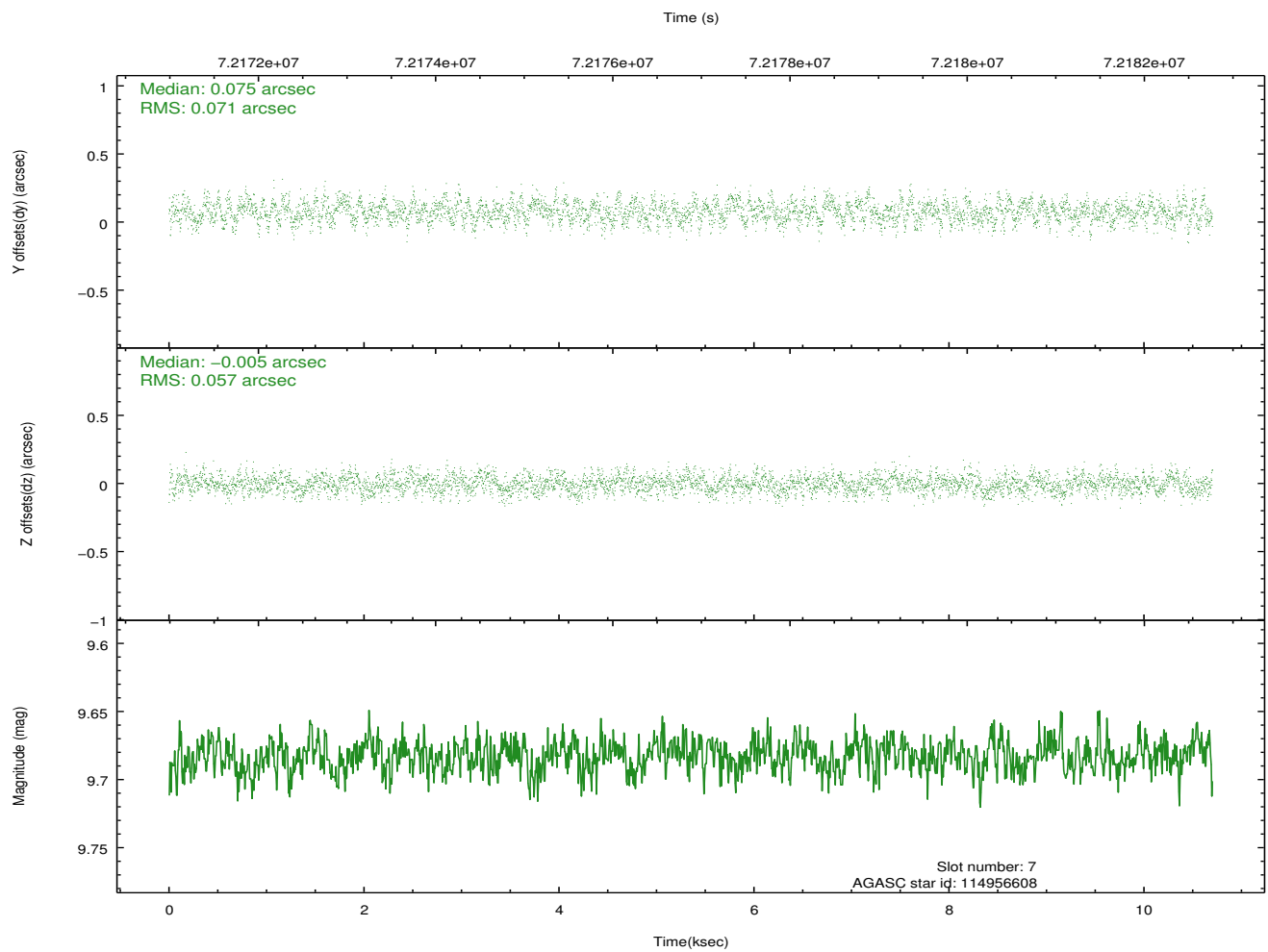
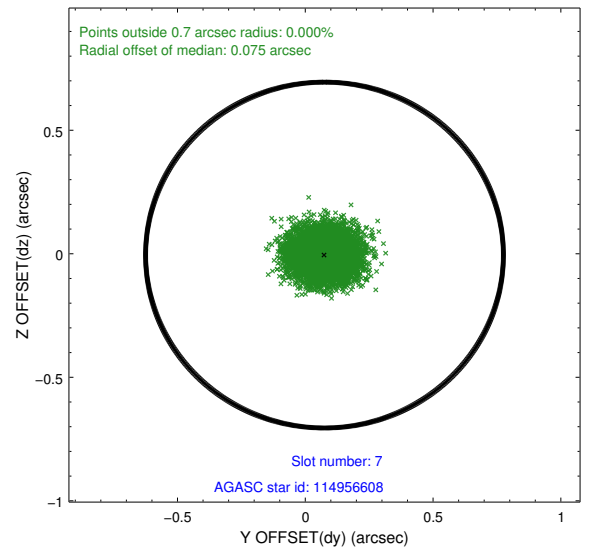
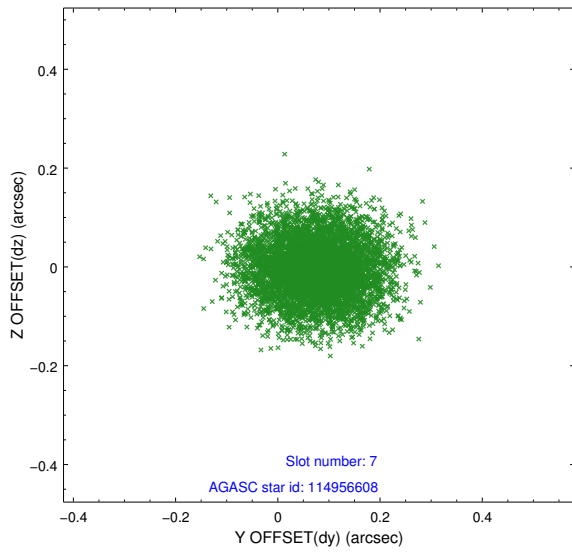
2.4.3 Slot 5



2.4.4 Slot 6

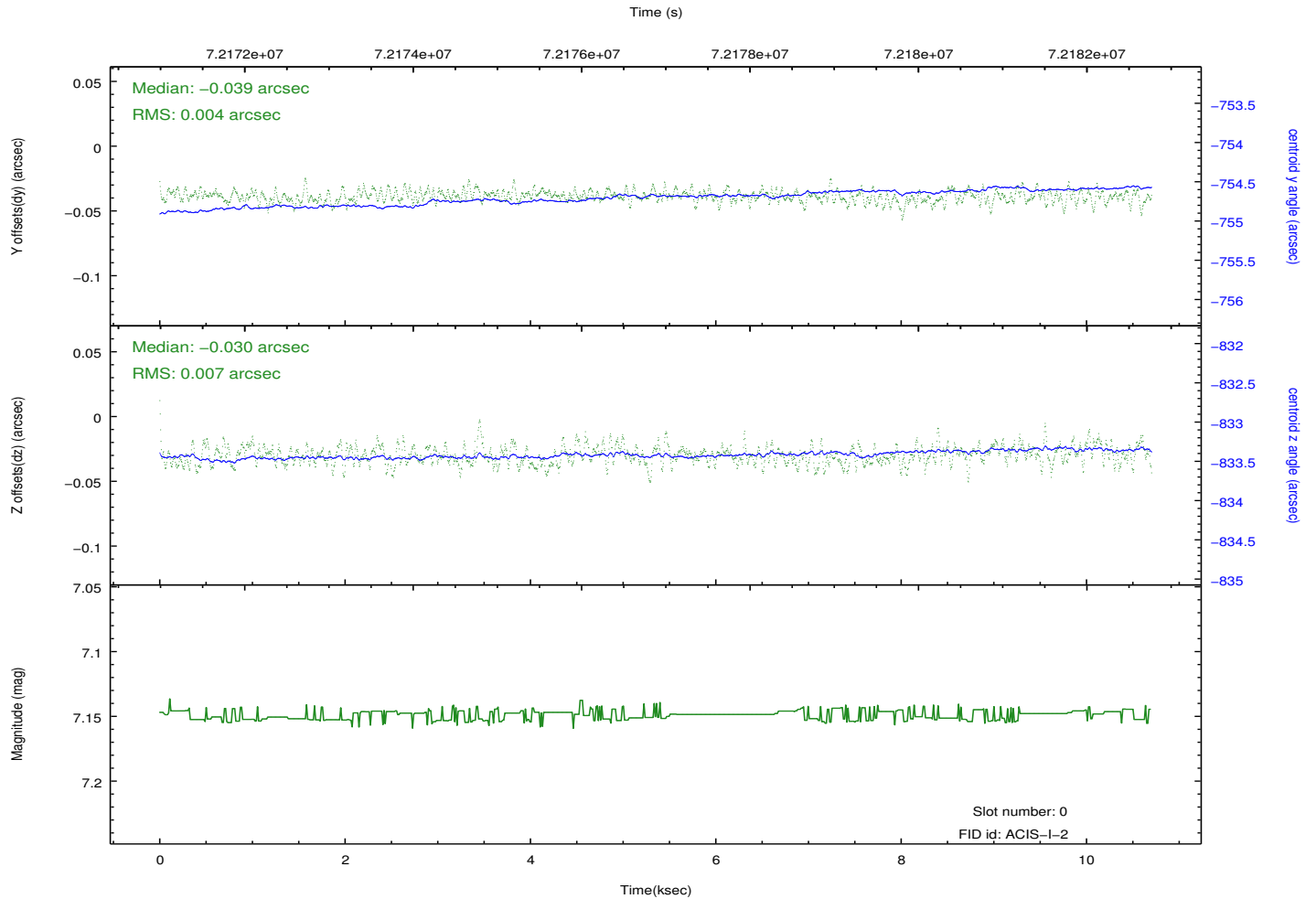
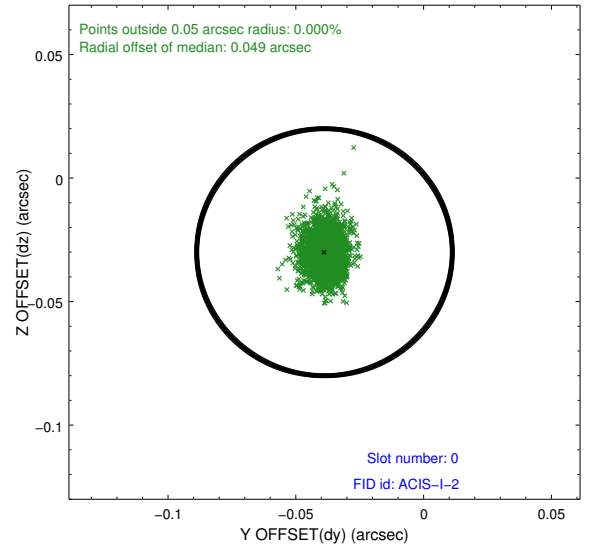
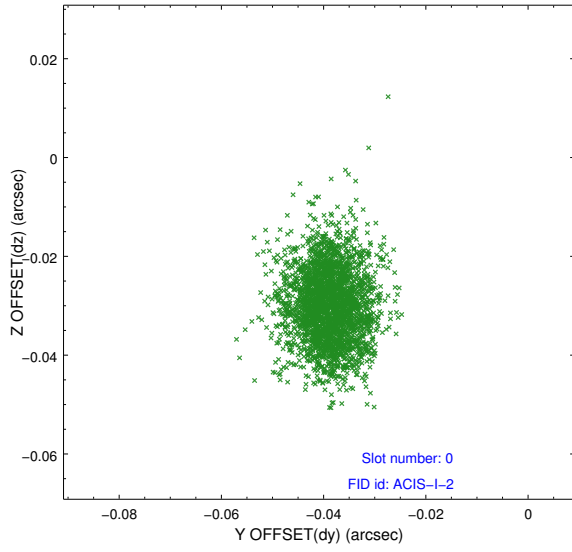


2.4.5 Slot 7

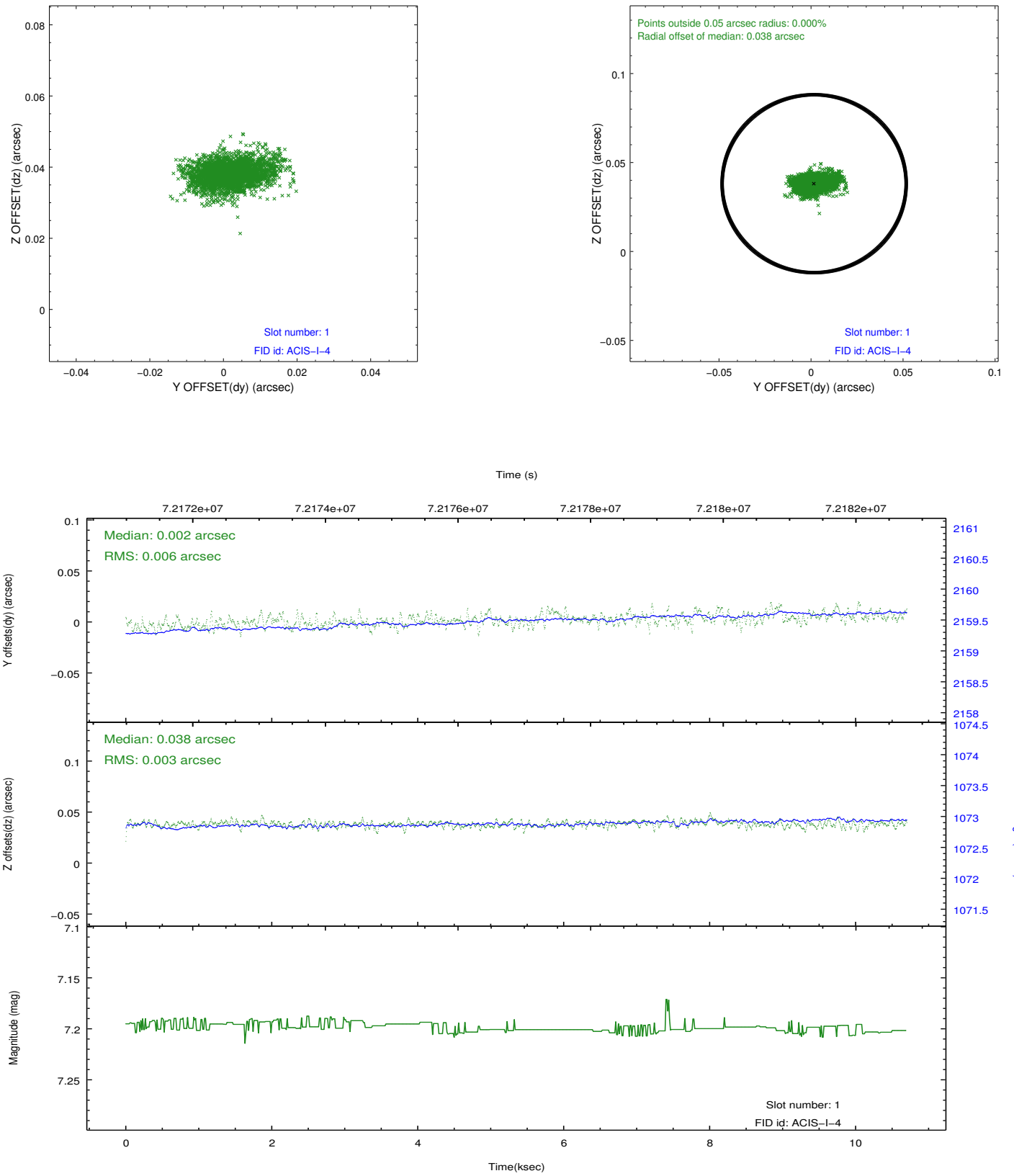


2.5 FID Slots

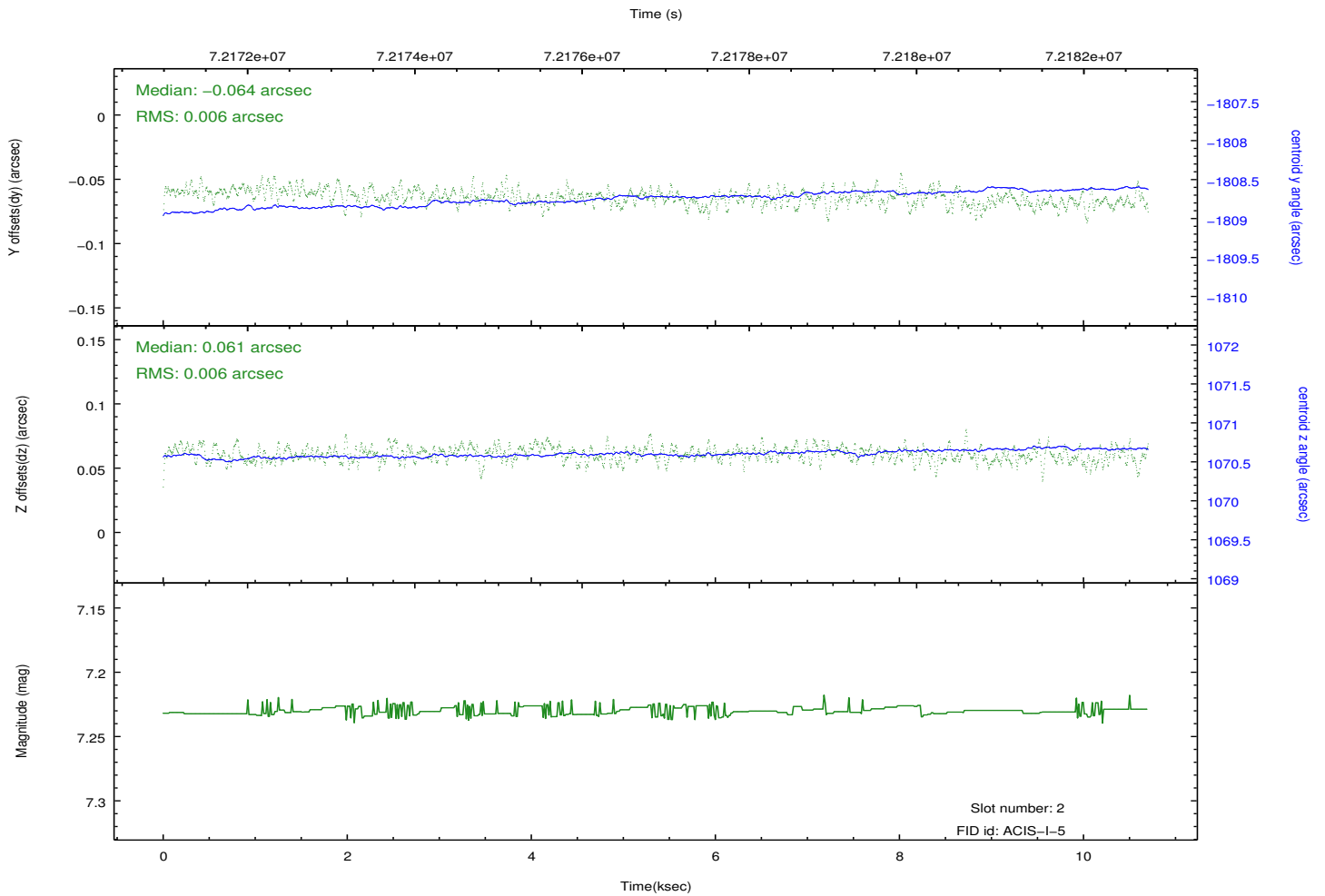
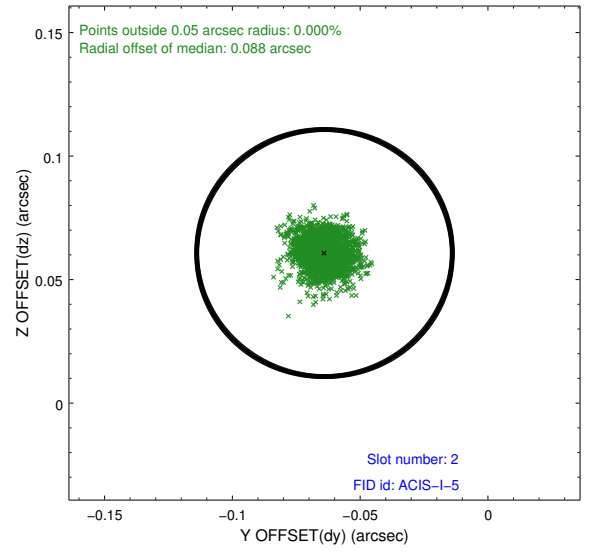
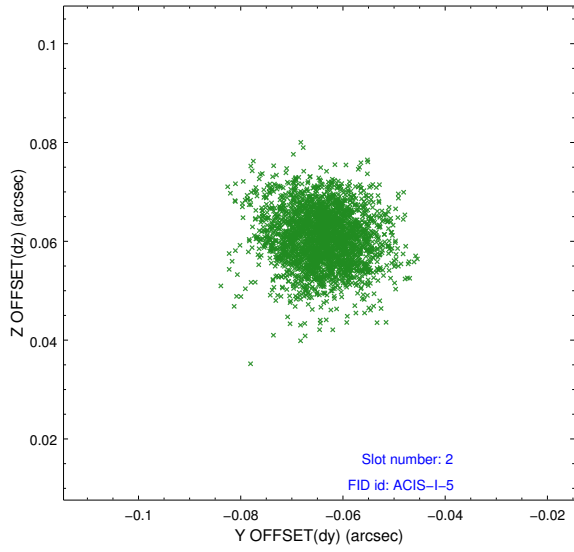
2.5.1 Slot 0



2.5.2 Slot 1



2.5.3 Slot 2



A Summary

A.1 Status

V&V Scientist	Jen Lauer
V&V Date (YYYY-MM-DD)	2012.08.28
V&V Edition	1
V&V Disposition and Status	OK
V&V Charge Time	9.865

A.2 Comments

Charge time for this ObsId remains at original value of 9.865 ks, although with the current processing the charge time would have been 7.082 ksec.