

V&V Reference Report

L2 ASCDS Version : 8.5

Observation 5197 - L2 Version 3
Chandra X-Ray Center

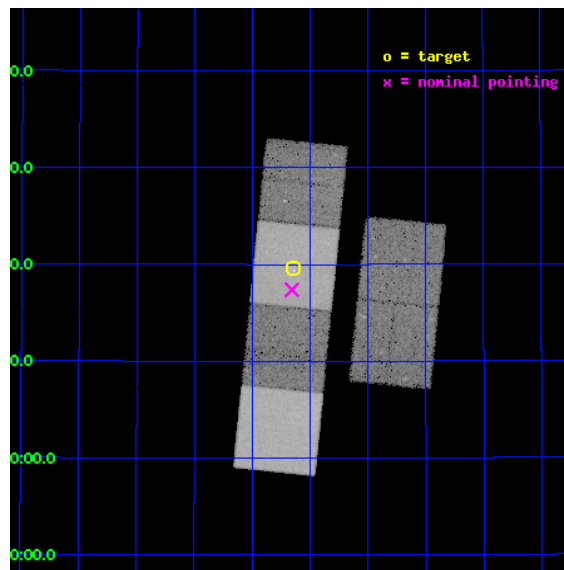
L2 Processing Date : Dec 6 2012

Contents

1	Front	2
2	OBI	3
2.1	OBI	3
2.1.1	Images	3
2.1.2	Bias	3
2.1.3	Parameters	4
2.1.4	Events	4
2.2	Compared Parameters	5
2.3	Aspect	6
2.4	Star Slots	9
2.4.1	Slot 3	9
2.4.2	Slot 4	10
2.4.3	Slot 5	11
2.4.4	Slot 6	12
2.4.5	Slot 7	13
2.5	FID Slots	14
2.5.1	Slot 0	14
2.5.2	Slot 1	15
2.5.3	Slot 2	16
A	Summary	17
A.1	Status	17
A.2	Comments	17

1 Front

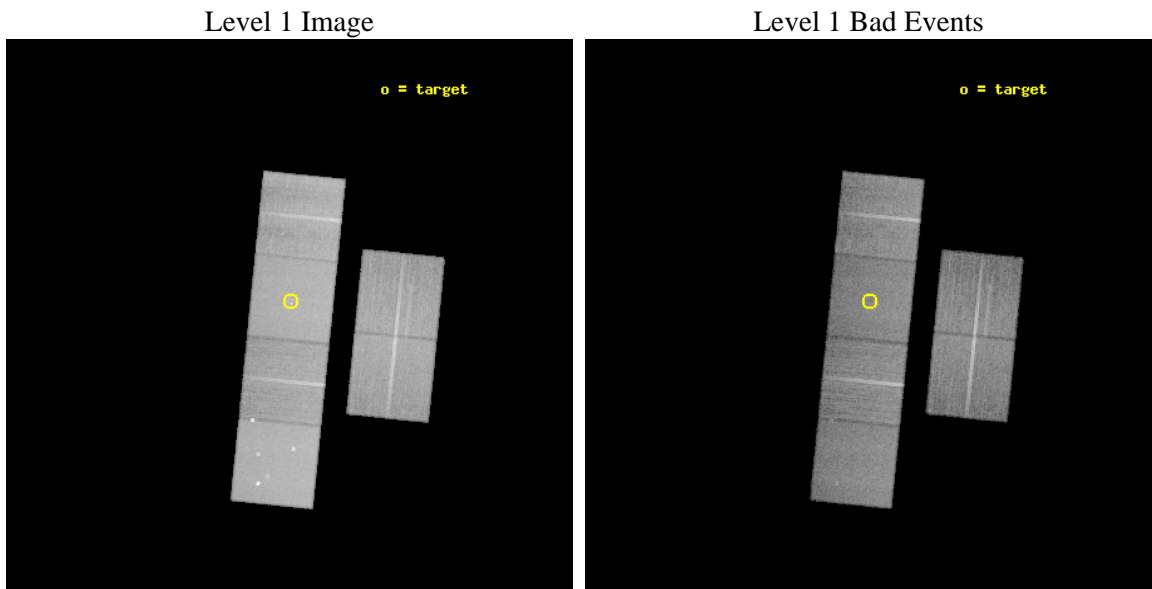
seq_num	600411	Sequence number
obs_id	5197	Observation id
title	The discrete X-ray source populations in an age sequence of nearby starburst galaxies	Proposal title
observer	Dr Andreas Zezas	Principal investigator
object	NGC4214	Source name
dtcycle	0	
cycle	P	events from which exps? Prim/Second/Both
ra_targ	183.912083	Observer's specified target RA [deg]
dec_targ	36.327778	Observer's specified target Dec [deg]
ra_nom	183.91464132606	Nominal RA [deg]
dec_nom	36.289590908824	Nominal Dec [deg]
roll_nom	275.75917168822	Nominal Roll [deg]
revision	3	Processing version of data
ontime	28959.999892116	Sum of GTIs [s]
livetime	28593.290935863	Livetime [s]
ontime2	28956.758921832	Sum of GTIs [s]
ontime3	28959.999892116	Sum of GTIs [s]
ontime5	28959.999892116	Sum of GTIs [s]
ontime6	28959.999892116	Sum of GTIs [s]
ontime7	28959.999892116	Sum of GTIs [s]
ontime8	28959.999892116	Sum of GTIs [s]
l2events	328874	Number of level 2 events



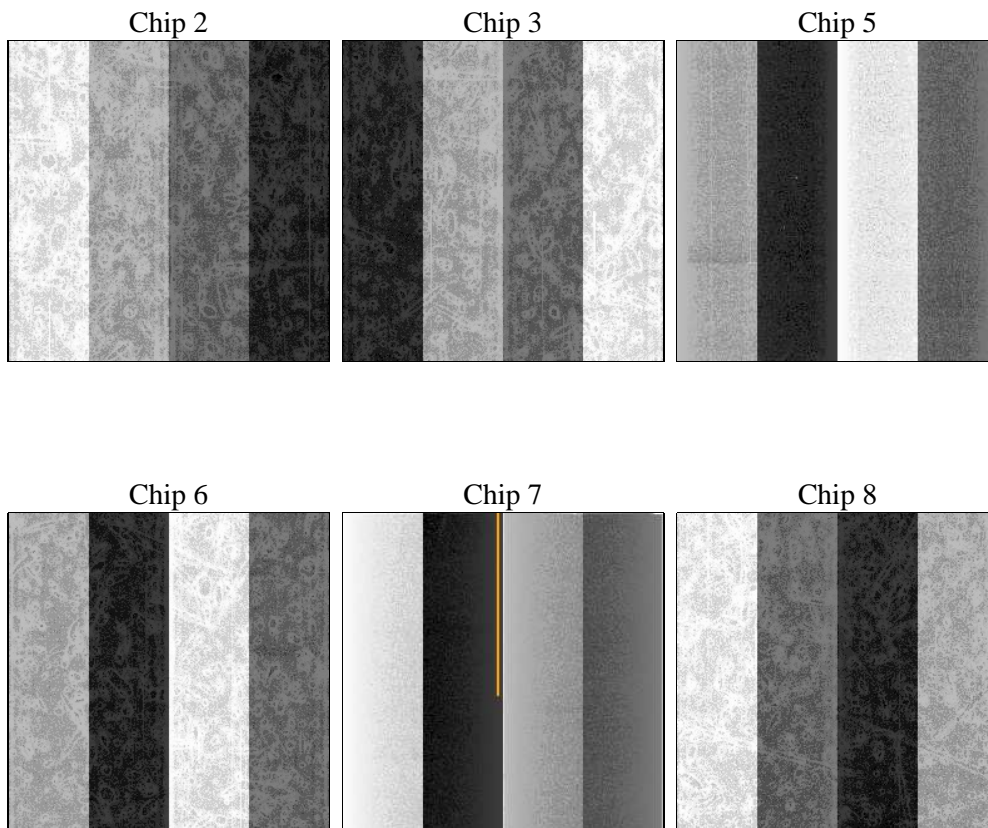
2 OBI

2.1 OBI

2.1.1 Images



2.1.2 Bias



2.1.3 Parameters

obi_num	3	Obi number	sched_exp_time	29000.000000	[s] Scheduled observation exposure time
ascdsver	8.5	Processing system revision	ontime	28959.999892116	Sum of GTIs [s]
caldbver	4.5.4	 	ontime2	28956.758921832	Sum of GTIs [s]
date	2012-12-07T00:24:50	Date and time of file creation	ontime3	28959.999892116	Sum of GTIs [s]
revision	3	Processing version of data	ontime5	28959.999892116	Sum of GTIs [s]
			ontime6	28959.999892116	Sum of GTIs [s]
			ontime7	28959.999892116	Sum of GTIs [s]
			ontime8	28959.999892116	Sum of GTIs [s]
			l1events	1449901	Number of level 1 events

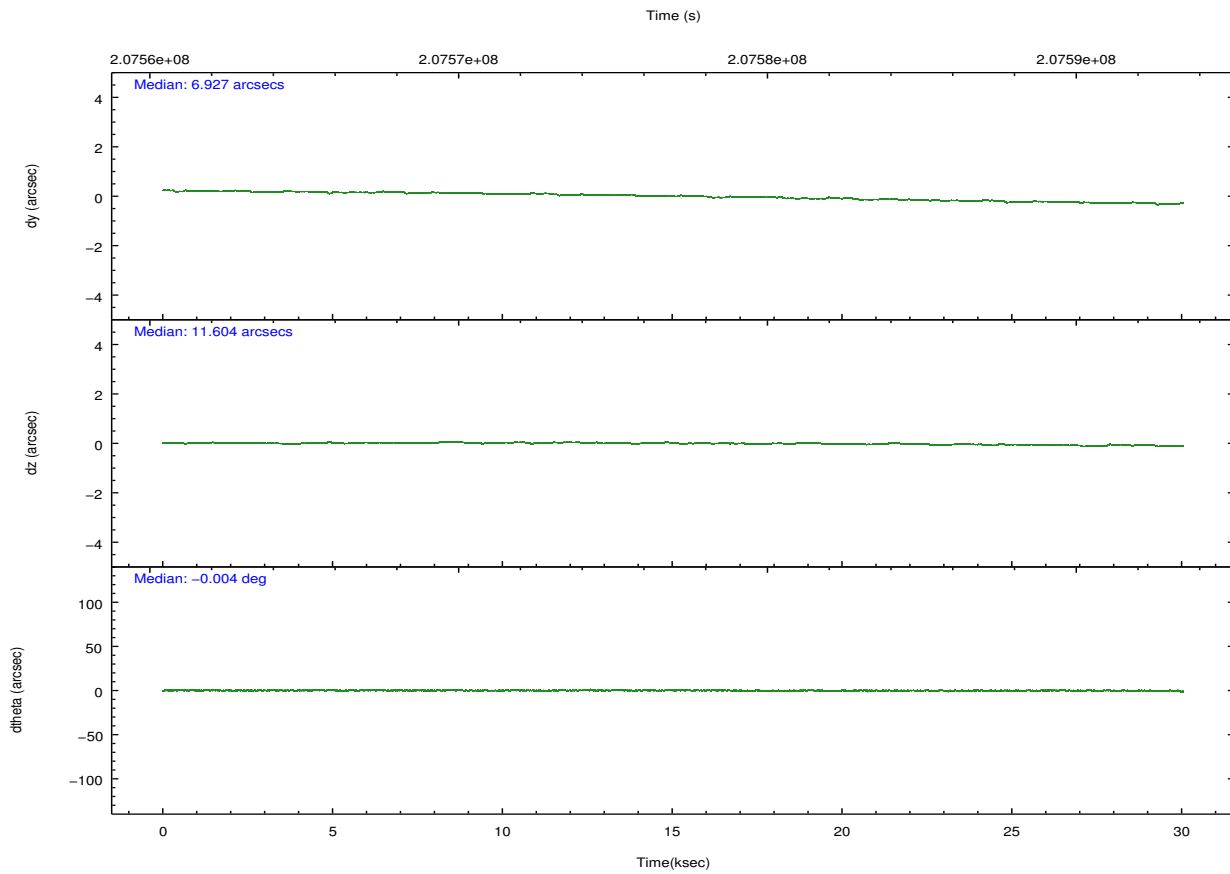
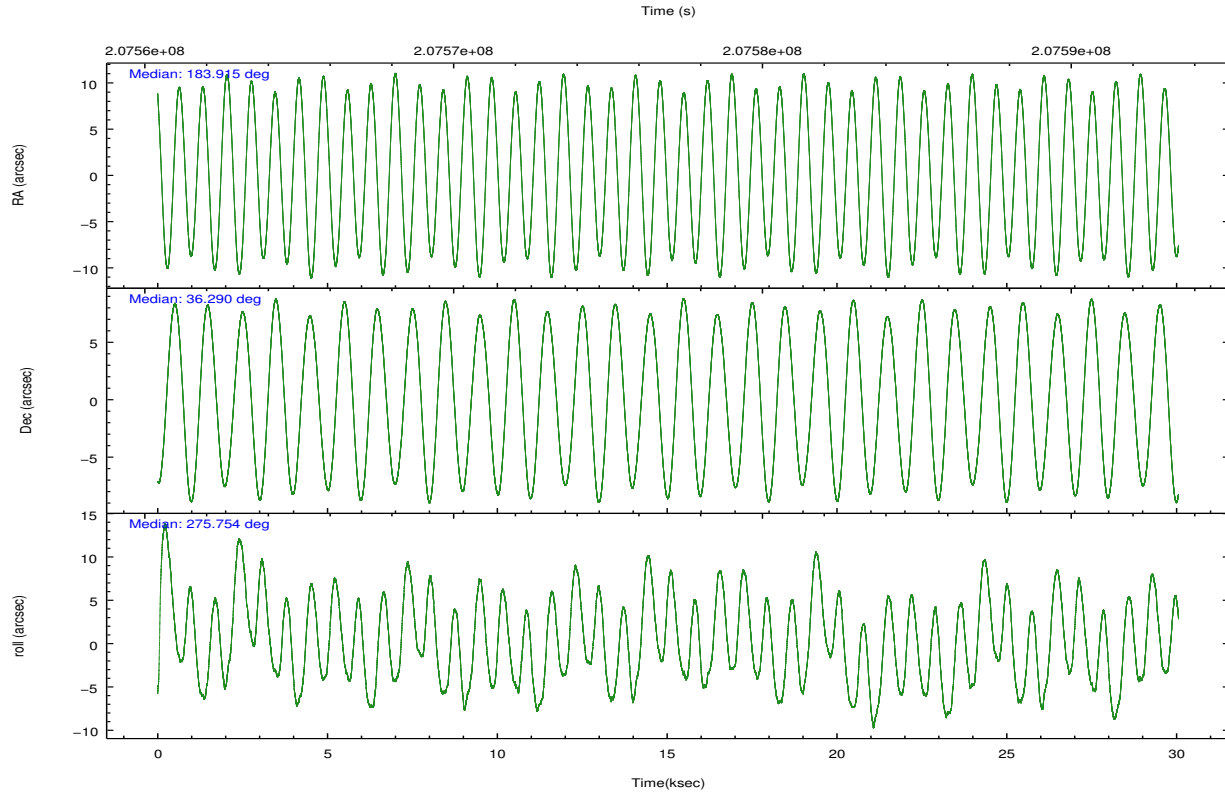
2.1.4 Events

	ccd 2	ccd 3	ccd 5	ccd 6	ccd 7	ccd 8		ccd 2	ccd 3	ccd 5	ccd 6	ccd 7	ccd 8
level 1 events	203329	197570	307842	205754	274816	260590	grade 0 events	11255	10486	18270	9846	11046	19389
rejected events	178167	173812	164101	181130	160431	200577		5%	5%	5%	4%	4%	7%
rejected %	87%	87%	53%	88%	58%	76%	grade 1 events	137	117	841	101	287	179
								0%	0%	0%	0%	0%	0%
							grade 2 events	5235	4609	41620	5227	22883	12412
								2%	2%	13%	2%	8%	4%
							grade 3 events	2310	2257	5754	2372	10107	6983
								1%	1%	1%	1%	3%	2%
							grade 4 events	2339	2309	5909	2230	10171	6501
								1%	1%	1%	1%	3%	2%
							grade 5 events	8153	8748	22373	9136	26164	12307
								4%	4%	7%	4%	9%	4%
							grade 6 events	4025	4100	72202	4953	60192	14731
								1%	2%	23%	2%	21%	5%
							grade 7 events	169875	164944	140873	171889	133966	188088
								83%	83%	45%	83%	48%	72%

2.2 Compared Parameters

Parameter	Planned	Actual	Parameter	Planned	Actual
Instrument	ACIS	ACIS	Obspar format version number	7	7
Detector	ACIS-235678	ACIS-235678	Obspar file type	PREDICTED	ACTUAL
Grating	NONE	NONE	Obspar update status	NONE	UPDATED
Data mode	FAINT	FAINT	Number of optional ACIS chips dropped	0	0
Observation mode	POINTING	POINTING	On-chip summing requested	N	N
[deg] Pointing RA	183.894530	183.9146413260576	Subarray requested	NONE	NONE
[deg] Pointing Dec	36.311487	36.2895909088241	Alternating exposures requested	N	N
[deg] Pointing Roll	275.614457	275.7591716882178	[s] Primary exposure time	0.000000	3.2
[mm] SIM focus pos	-0.684267	-0.6828225247311905			
[mm] SIM defocus	0	0.001444936568705701			
[mm] SIM translation stage pos	-190.132523	-190.1400660498719			
[mm] SIM translation stage offset	0	0.00754346686406393			
[s] Observation start time (MET)	207562975.184000	207561576.73896			
Observation start date	2004-07-30T08:21:51	2004-07-30T07:59:36			
[s] Observation end time (MET)	207591975.184000	207592585.04034			
Observation end date	2004-07-30T16:25:11	2004-07-30T16:36:25			
Read mode	TIMED	TIMED			

2.3 Aspect

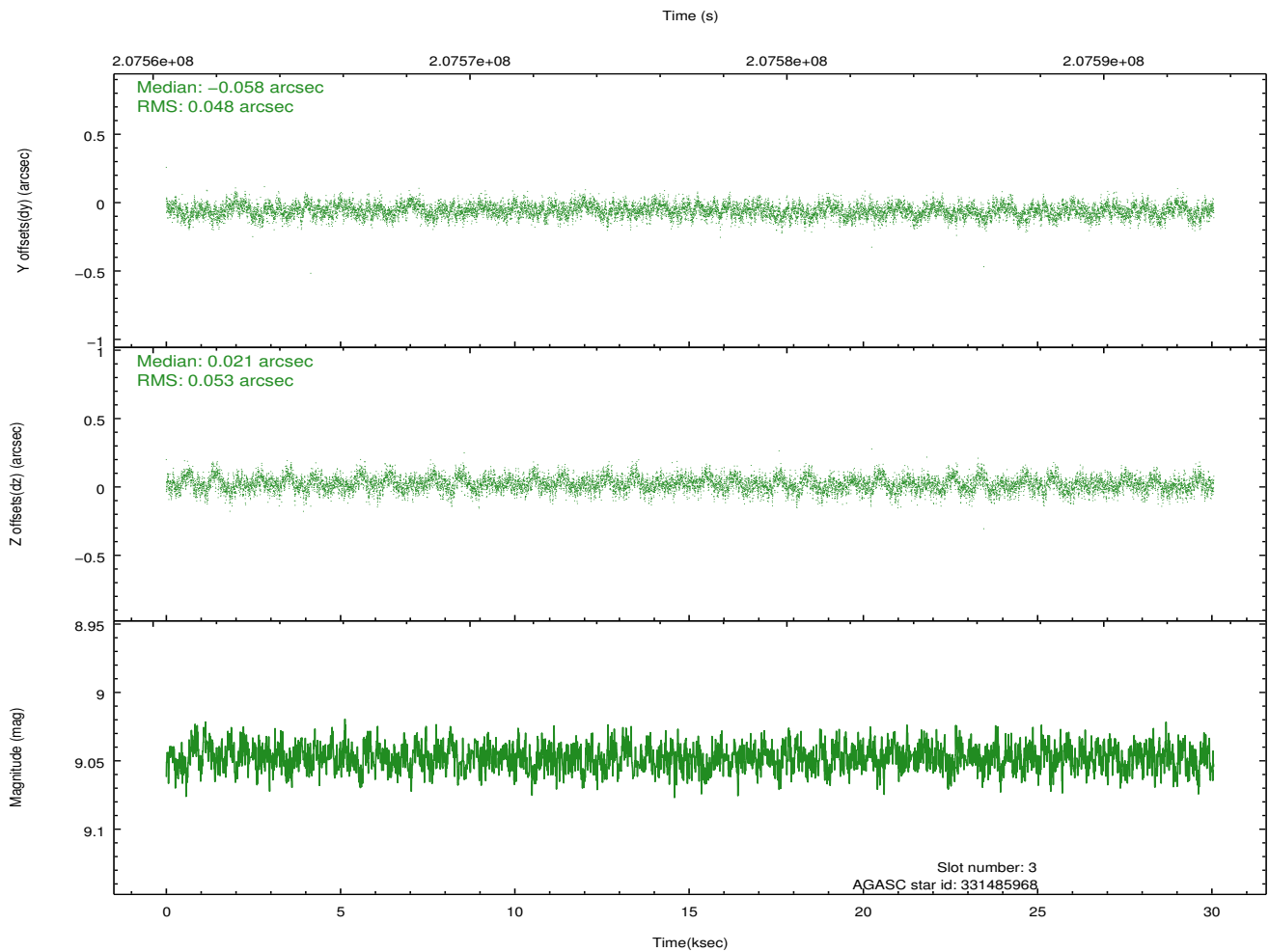
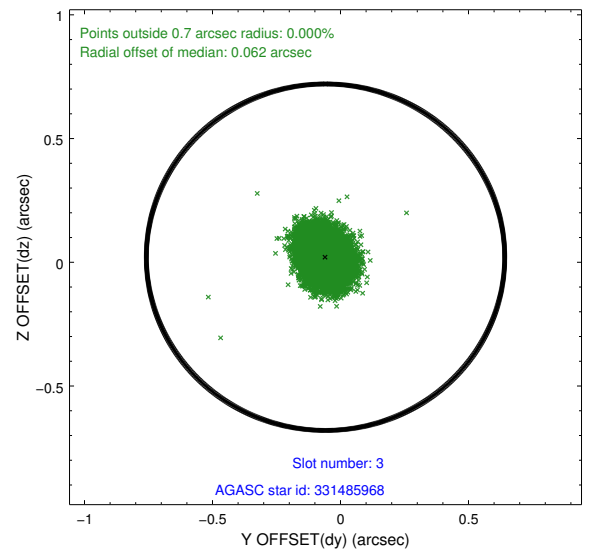
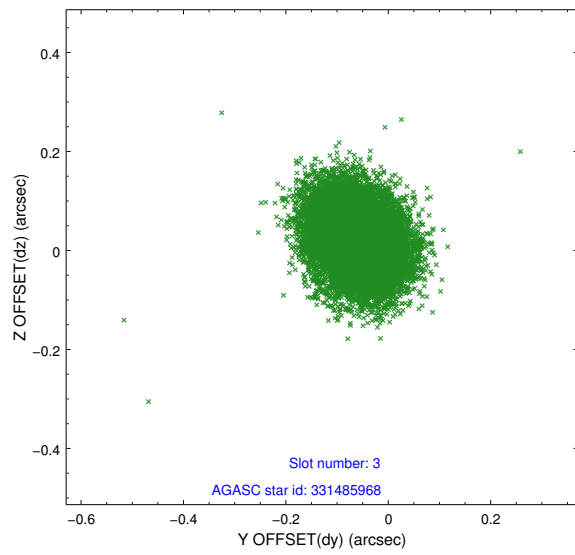


Slot Statistics

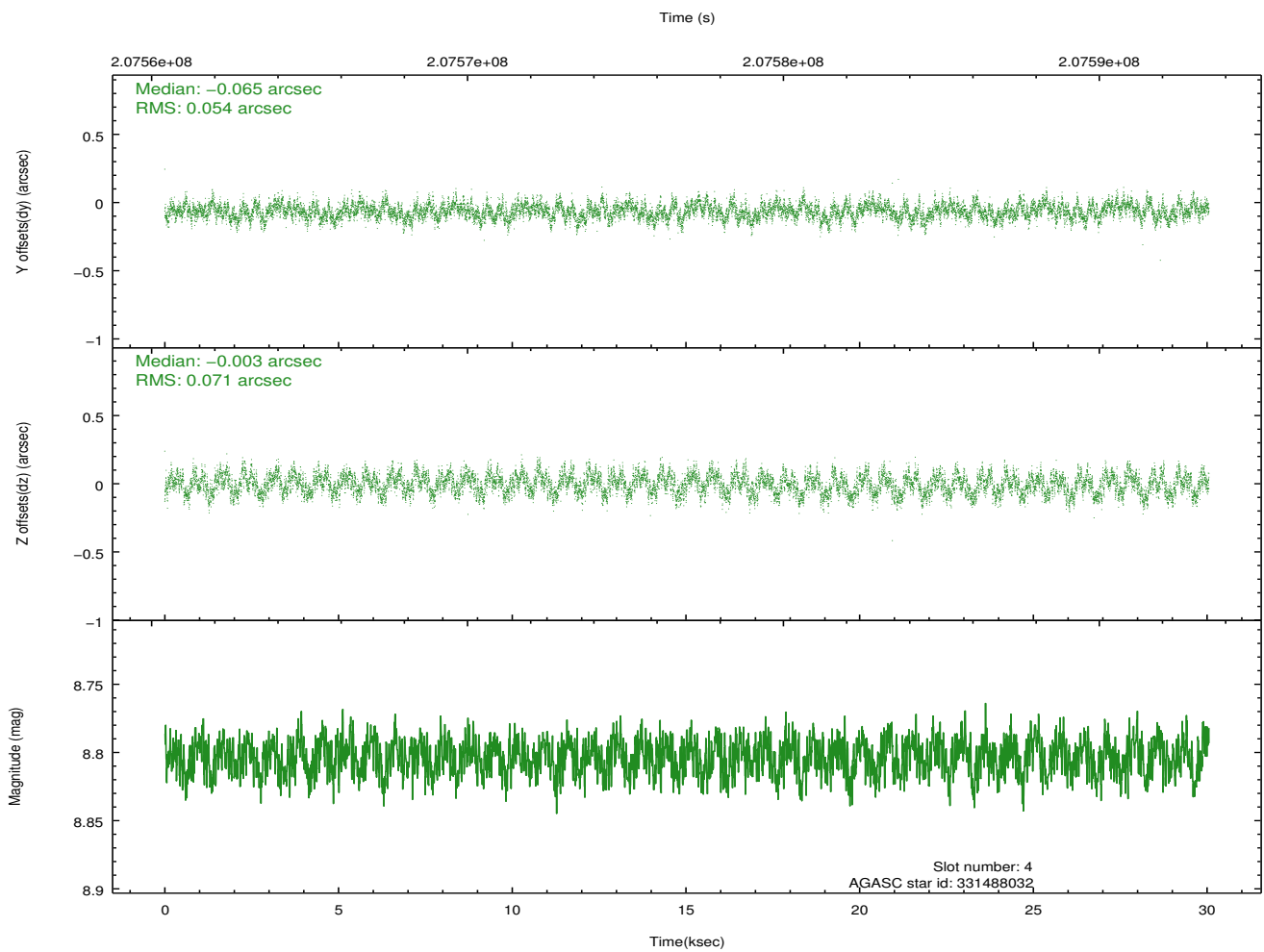
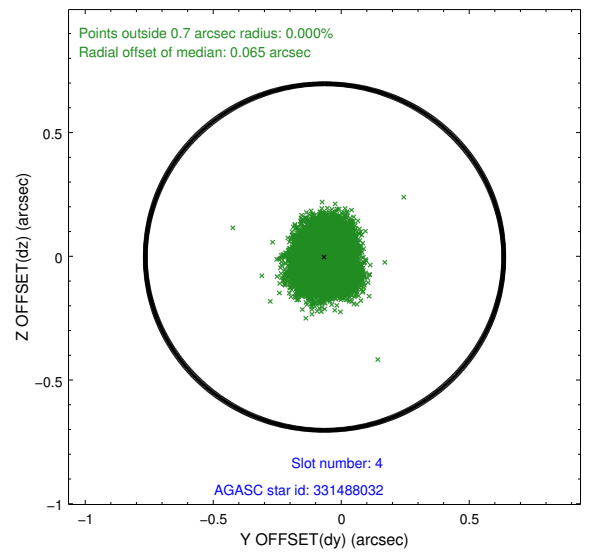
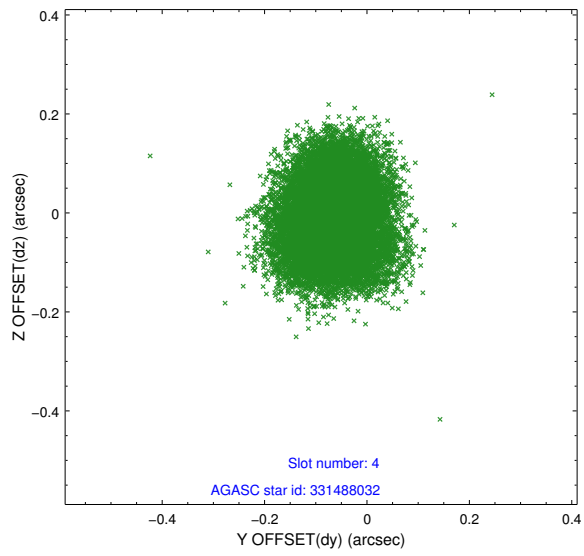
slot	status	id	mag	n_pts	med_dy	med_dz	dr1	dr2	ra	dec	mean_y	mean_z
0	FID	ACIS-S-2	7.10	7330	-0.035	-0.017	0.014	0.020	0.000000	0.000000	-759.69	-1732.90
1	FID	ACIS-S-4	7.20	7330	0.056	0.021	0.016	0.024	0.000000	0.000000	2153.64	175.56
2	FID	ACIS-S-5	7.23	7331	-0.054	0.004	0.009	0.014	0.000000	0.000000	-1812.47	169.27
3	GUIDE	331485968	9.05	14656	-0.058	0.021	0.075	0.124	183.439805	36.736932	-1655.28	-1155.30
4	GUIDE	331488032	8.80	14657	-0.065	-0.003	0.096	0.150	183.136084	36.256011	-24.95	-2209.75
5	GUIDE	331488832	9.94	14644	-0.032	-0.082	0.130	0.205	184.485285	36.899363	-1945.00	1899.98
6	GUIDE	331496008	9.37	14572	0.157	0.000	0.105	0.169	184.214946	35.936223	1434.74	797.95
7	GUIDE	331496608	9.60	14644	0.002	0.061	0.128	0.212	183.557200	35.638037	2315.28	-1219.47

2.4 Star Slots

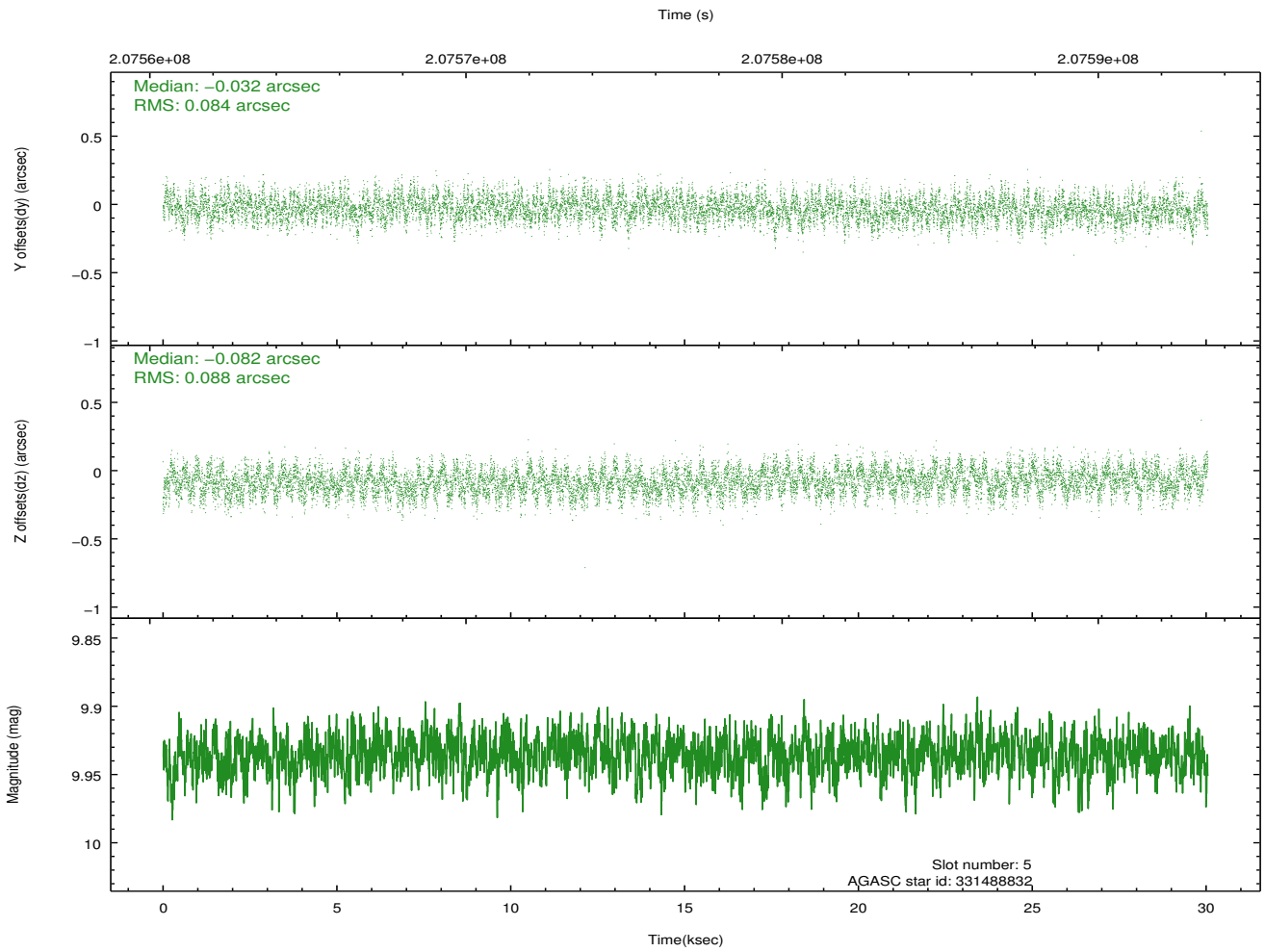
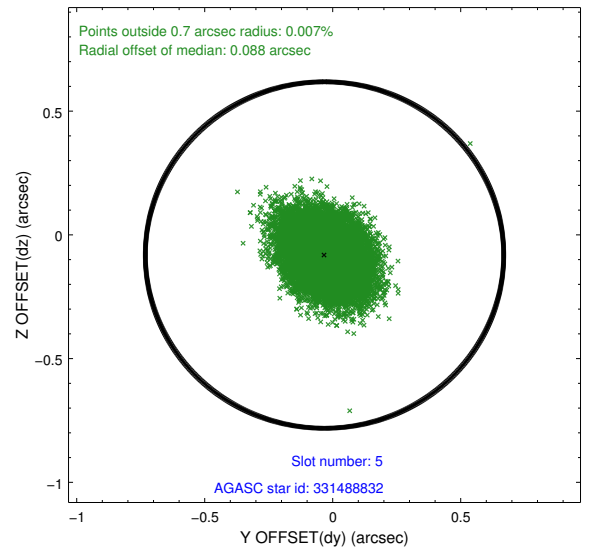
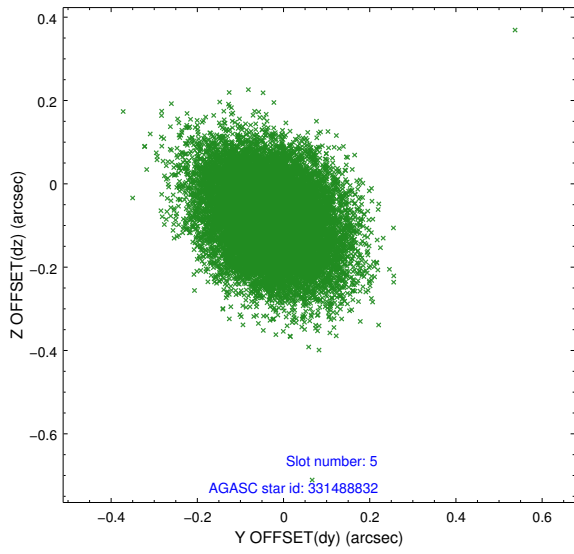
2.4.1 Slot 3



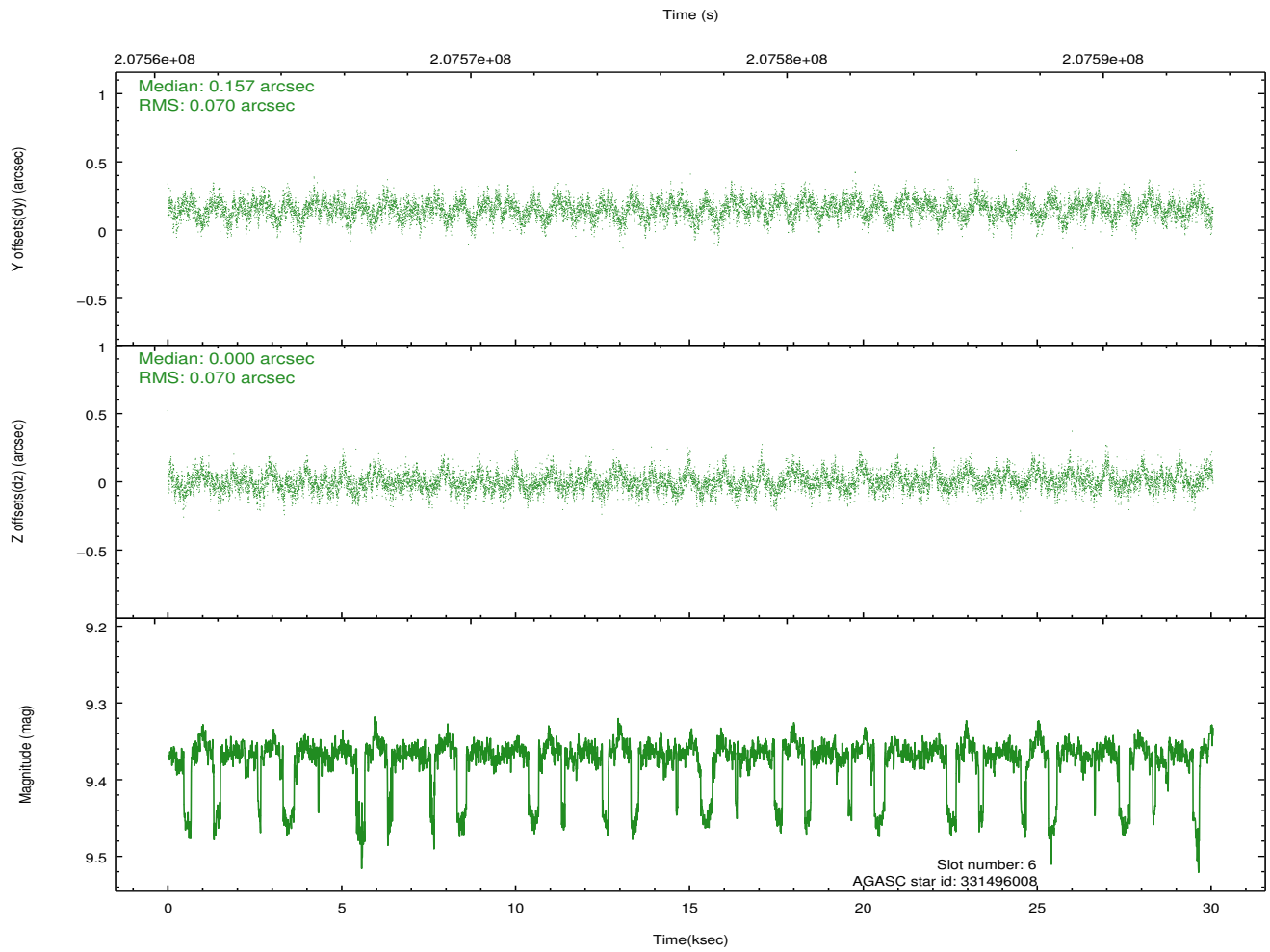
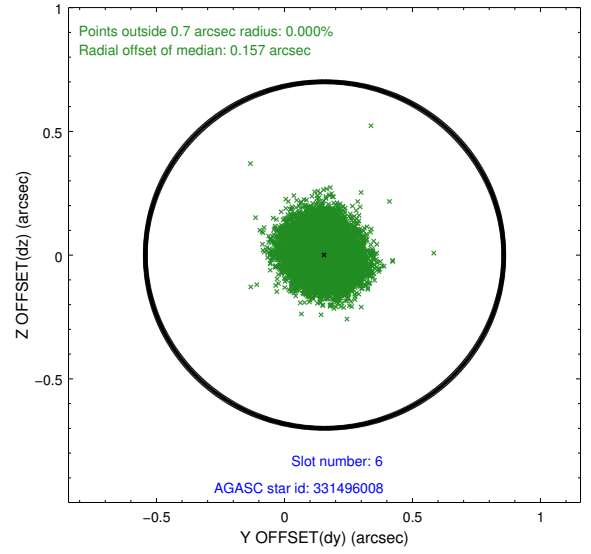
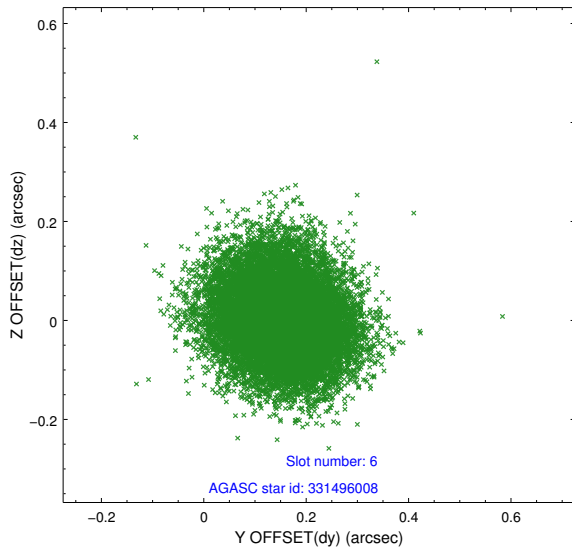
2.4.2 Slot 4



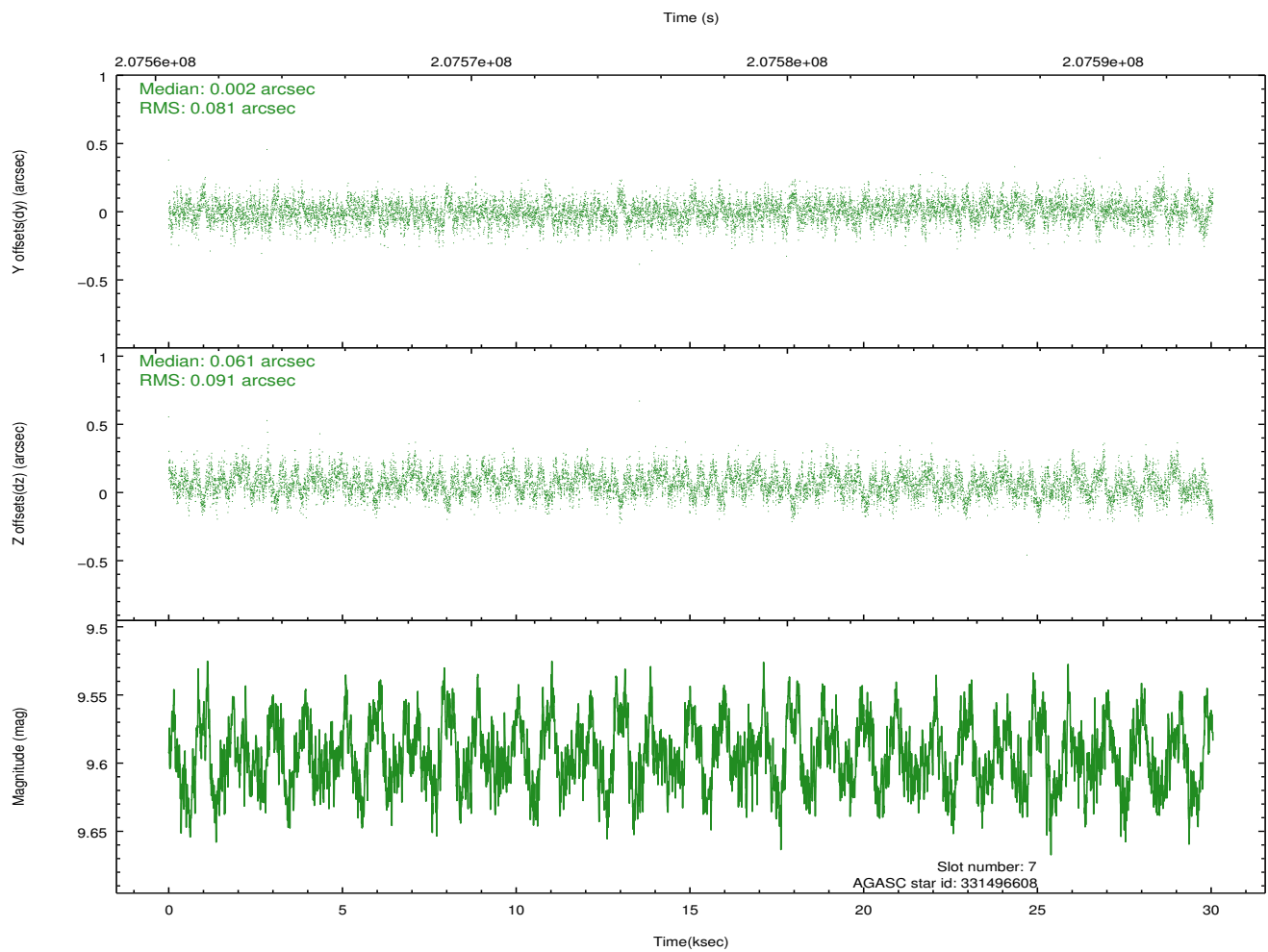
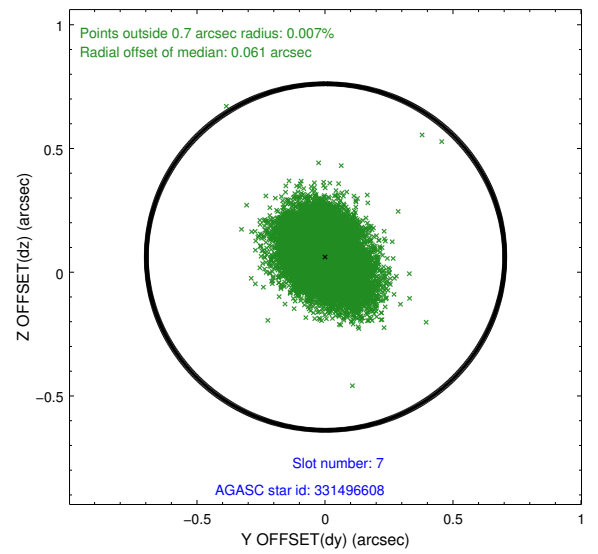
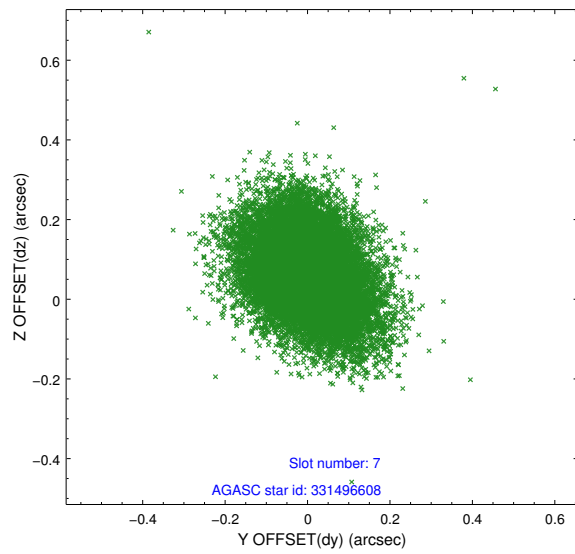
2.4.3 Slot 5



2.4.4 Slot 6

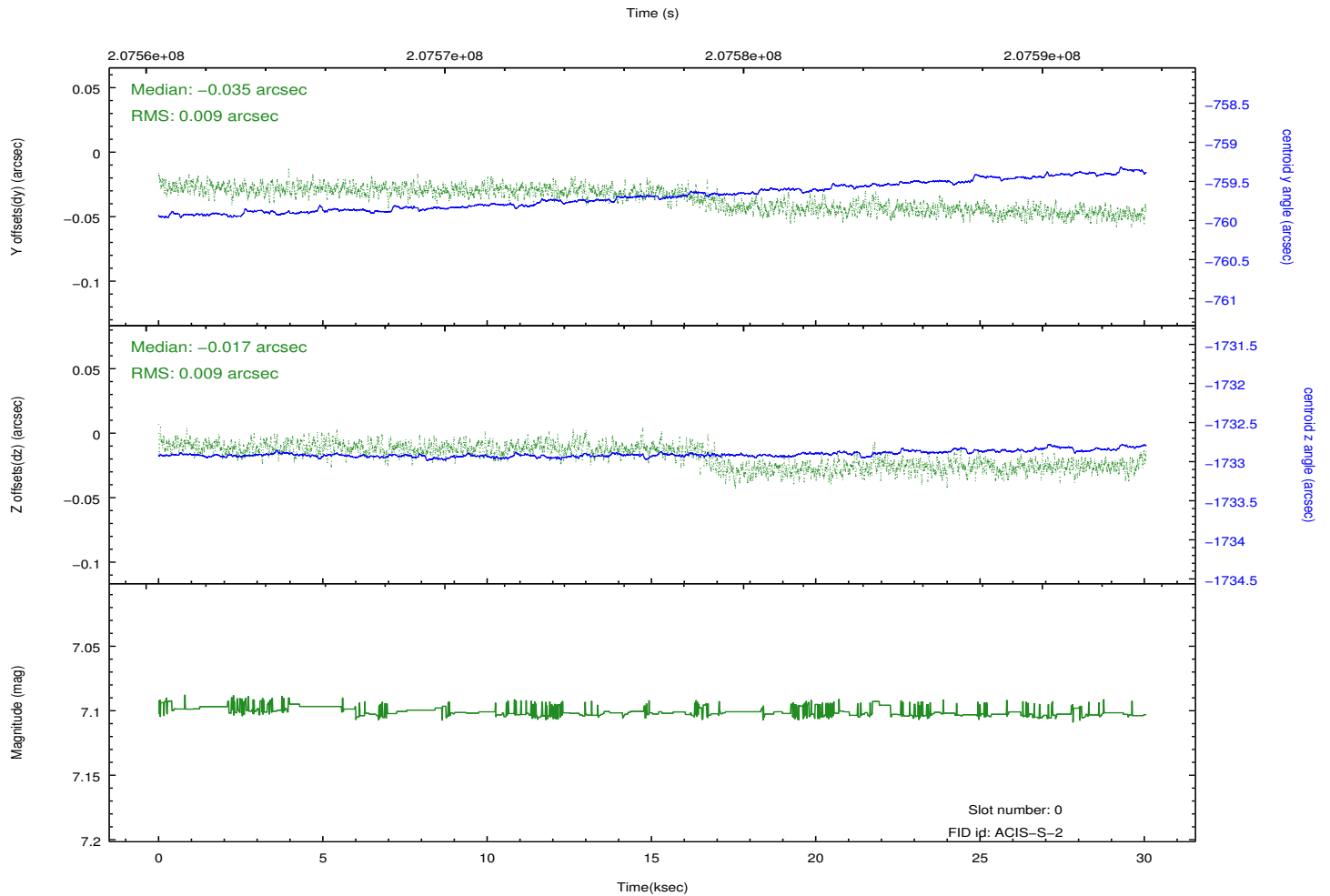
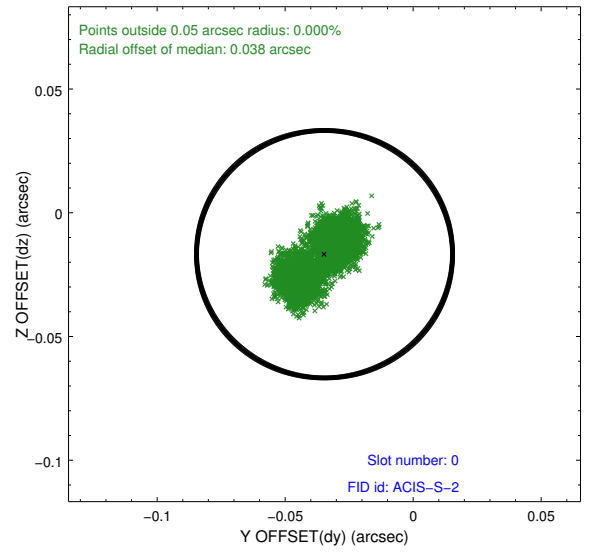
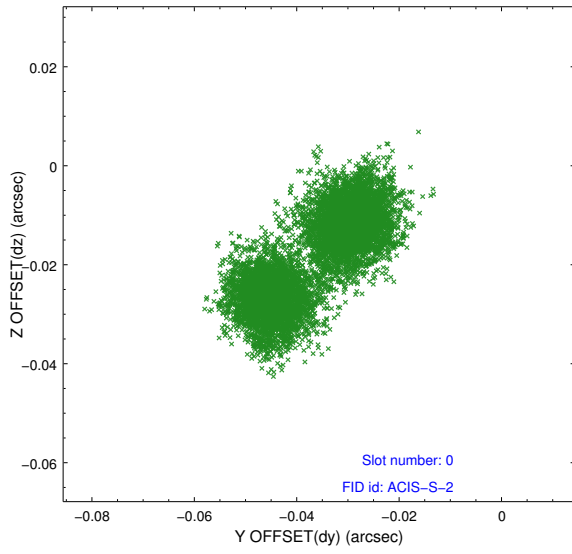


2.4.5 Slot 7

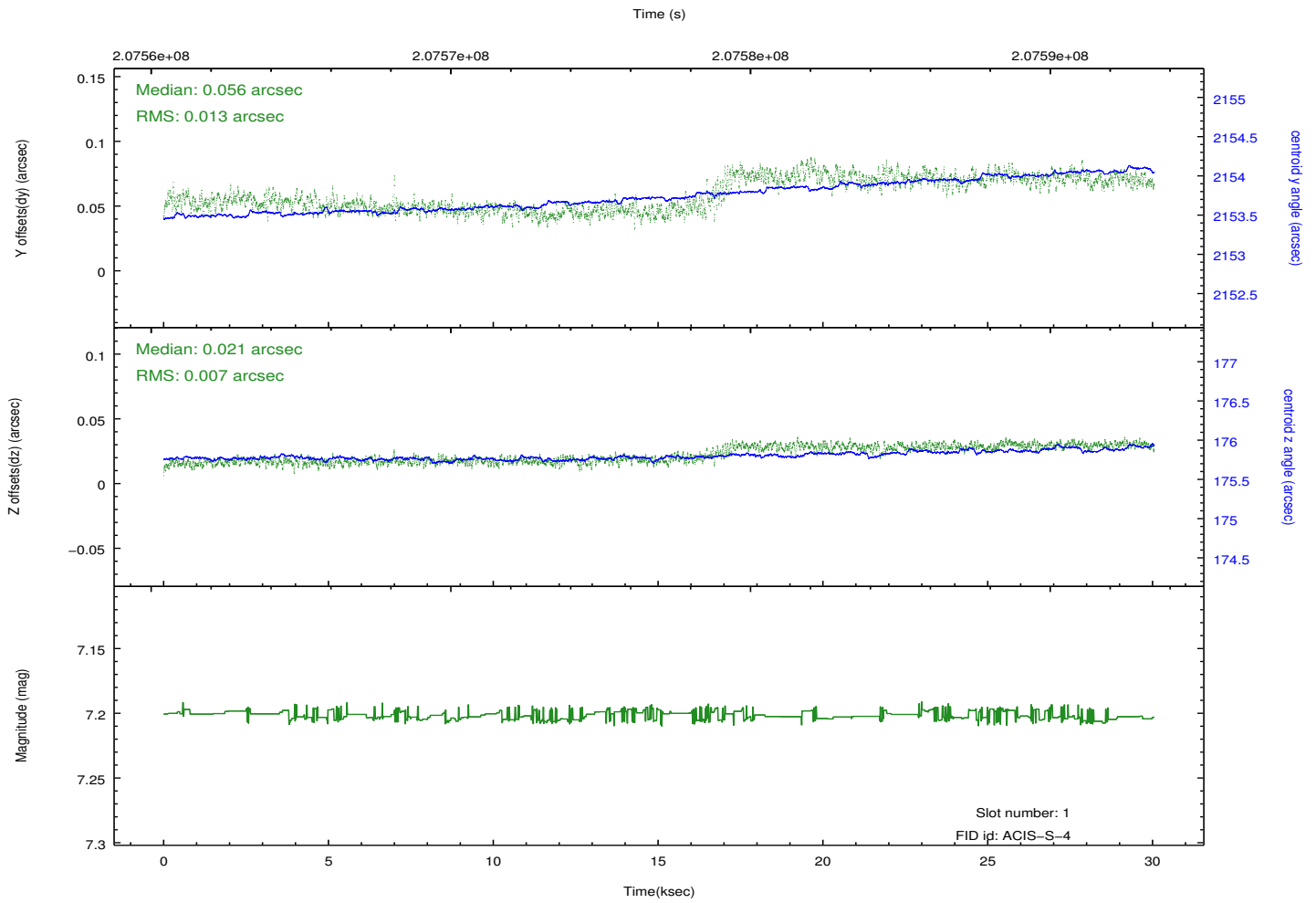
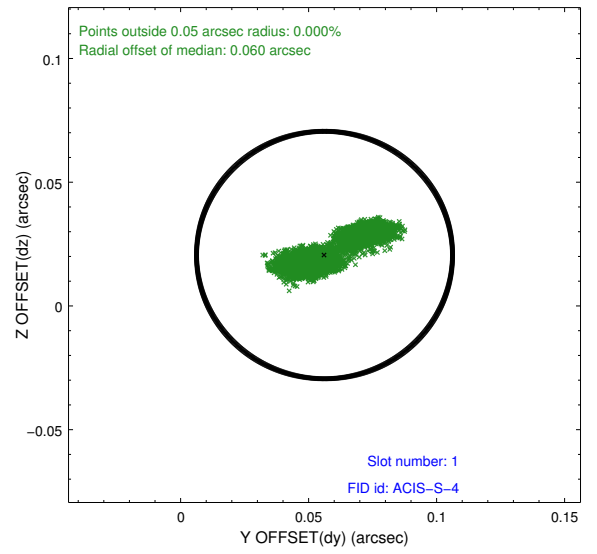
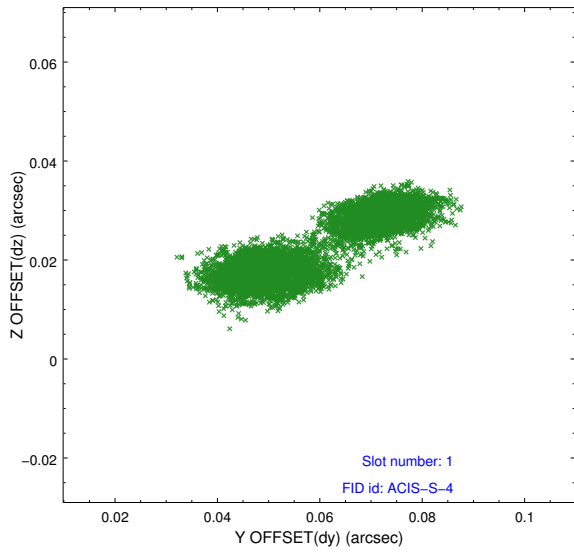


2.5 FID Slots

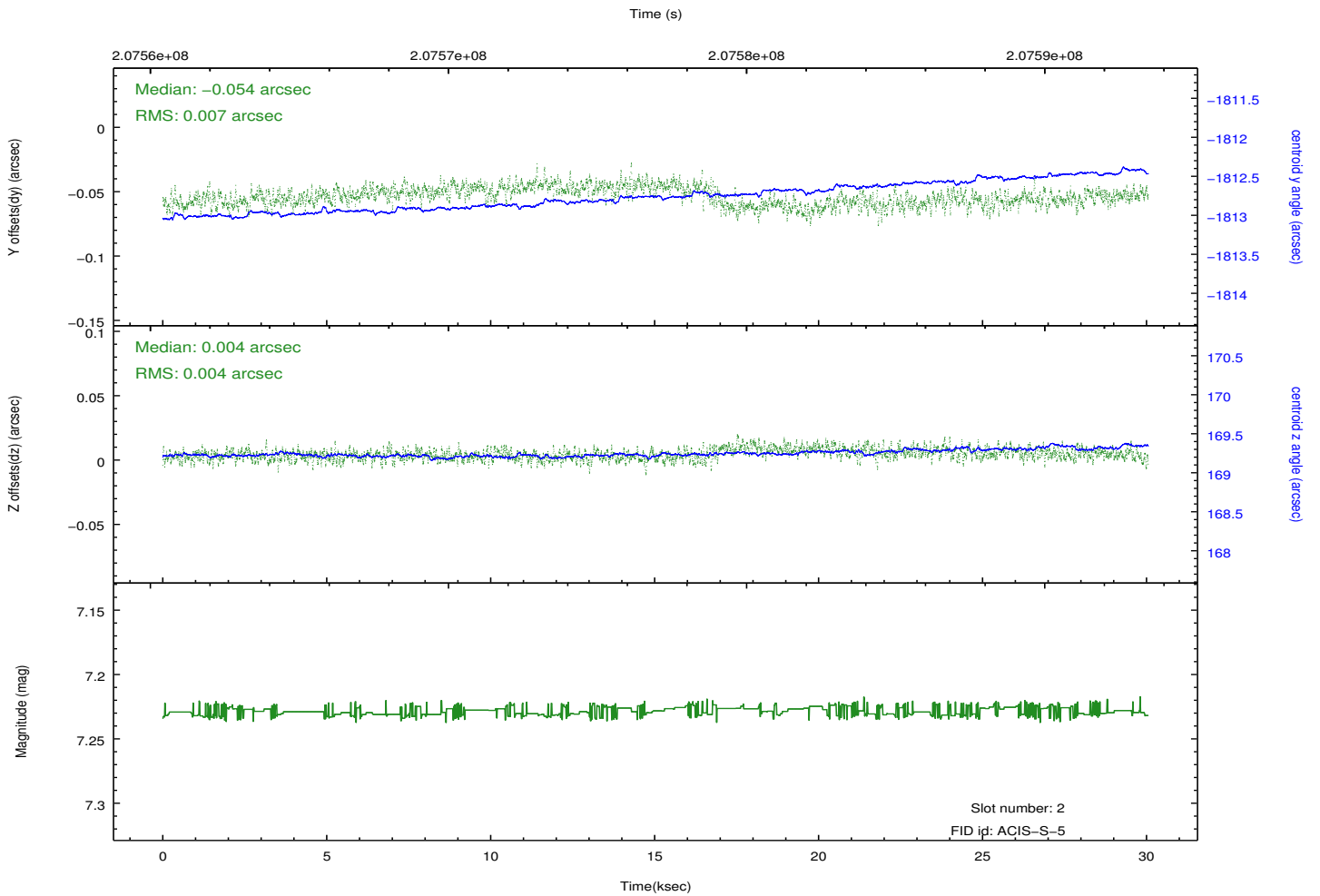
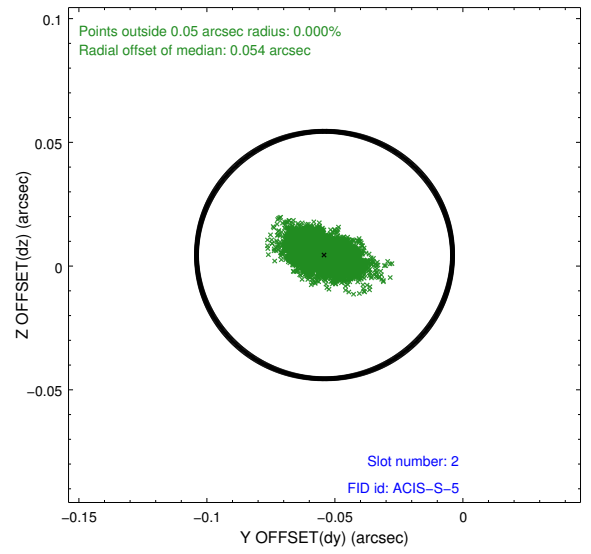
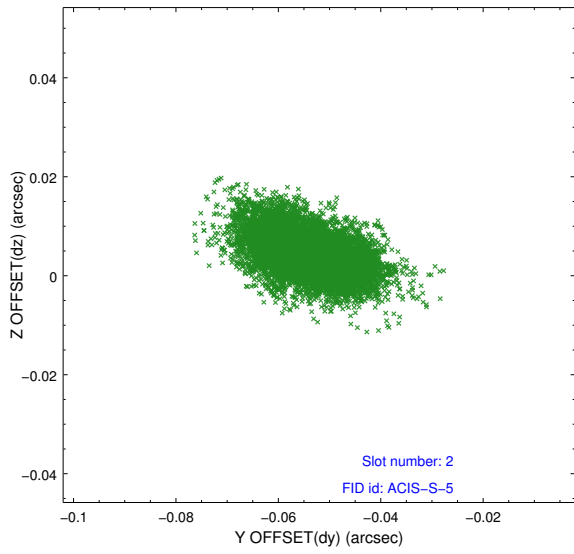
2.5.1 Slot 0



2.5.2 Slot 1



2.5.3 Slot 2



A Summary

A.1 Status

V&V Scientist	Beth Sundheim
V&V Date (YYYY-MM-DD)	2012.12.20
V&V Edition	1
V&V Disposition and Status	OK
V&V Charge Time	28.959

A.2 Comments