

V&V Reference Report

L2 ASCDS Version : 8.4.5

Observation 5287 - L2 Version 3
Chandra X-Ray Center

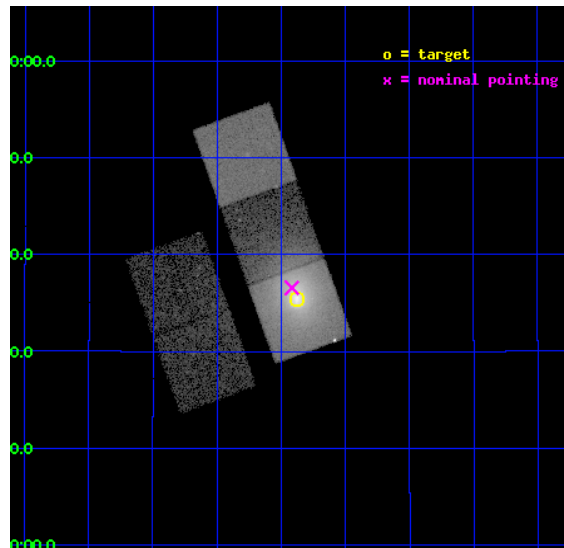
L2 Processing Date : Nov 11 2012

Contents

1	Front	2
2	OBI	3
2.1	OBI	3
2.1.1	Images	3
2.1.2	Bias	3
2.1.3	Parameters	4
2.1.4	Events	4
2.2	Compared Parameters	5
2.3	Aspect	6
2.4	Star Slots	9
2.4.1	Slot 3	9
2.4.2	Slot 4	10
2.4.3	Slot 5	11
2.4.4	Slot 6	12
2.4.5	Slot 7	13
2.5	FID Slots	14
2.5.1	Slot 0	14
2.5.2	Slot 1	15
2.5.3	Slot 2	16
A	Summary	17
A.1	Status	17
A.2	Comments	17

1 Front

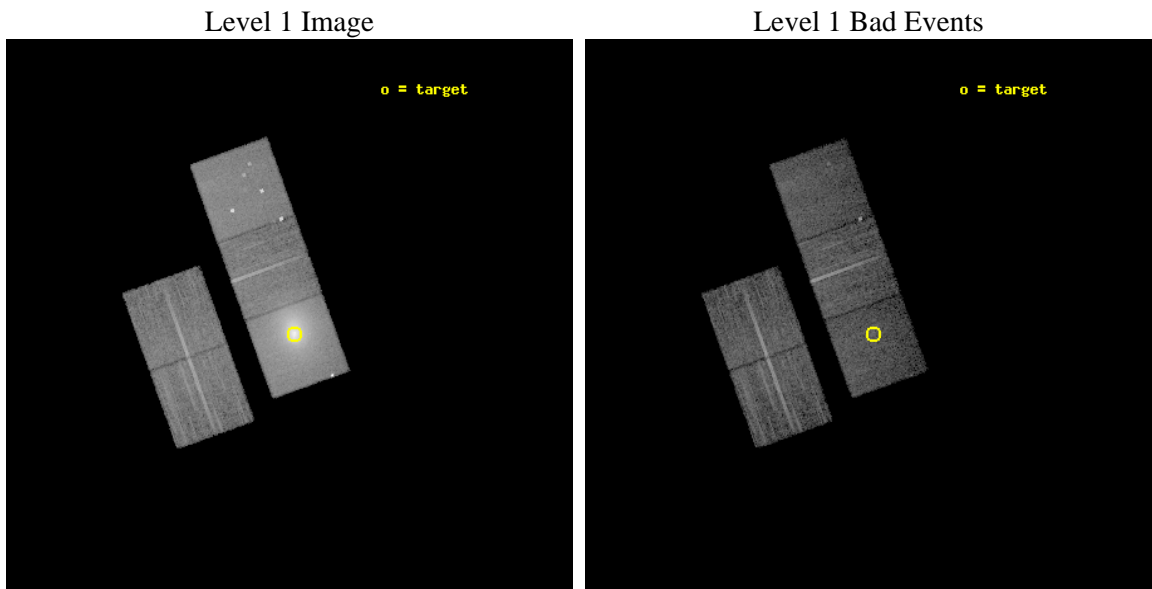
seq_num	890027	Sequence number
obs_id	5287	Observation id
title	Mapping the Depth of the Contaminant on the ACIS Filters with Abell 11795	Proposal title
observer	Dr. CXC Calibration	Principal investigator
object	A1795	Source name
dtcycle	0	
cycle	P	events from which exps? Prim/Second/Both
ra_targ	207.219583	Observer's specified target RA [deg]
dec_targ	26.590833	Observer's specified target Dec [deg]
ra_nom	207.22922029975	Nominal RA [deg]
dec_nom	26.609742541705	Nominal Dec [deg]
roll_nom	70.236175627557	Nominal Roll [deg]
revision	3	Processing version of data
ontime	14492.201626092	Sum of GTIs [s]
livetime	14302.850342844	Livetime [s]
ontime2	14492.037466079	Sum of GTIs [s]
ontime3	14482.655625224	Sum of GTIs [s]
ontime5	14492.160586089	Sum of GTIs [s]
ontime6	14492.119546086	Sum of GTIs [s]
ontime7	14492.201626092	Sum of GTIs [s]
l2events	293124	Number of level 2 events



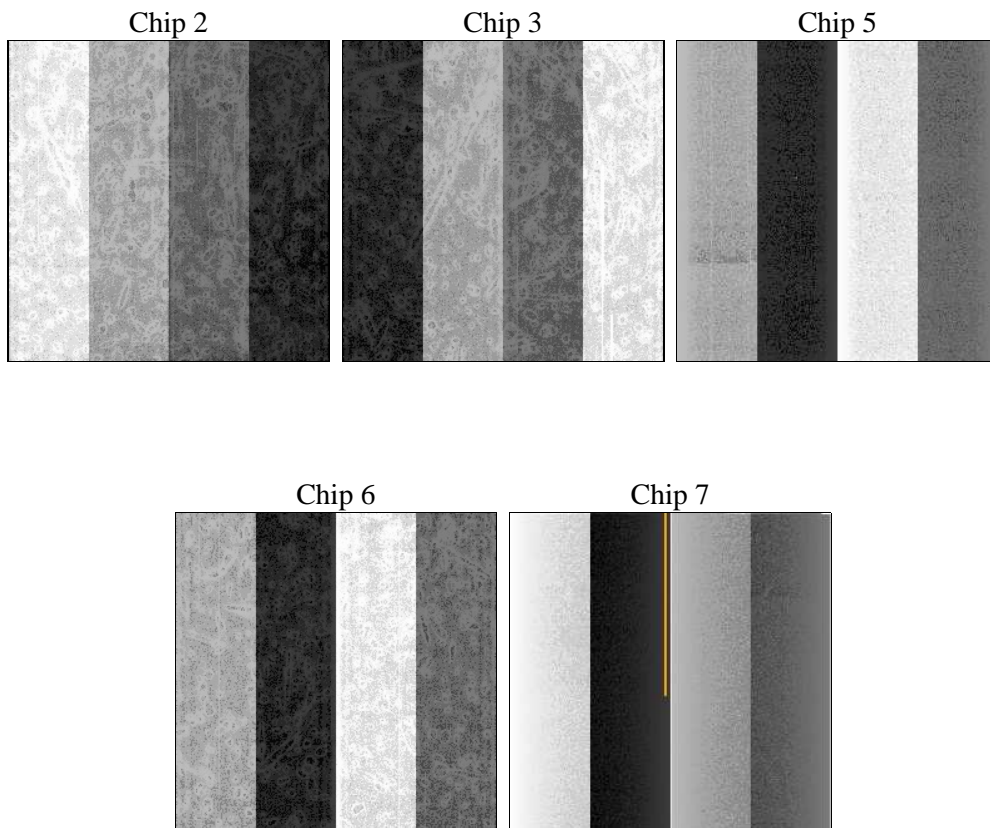
2 OBI

2.1 OBI

2.1.1 Images



2.1.2 Bias



2.1.3 Parameters

obi_num	1	Obi number	sched_exp_time	14715.000000	[s] Scheduled observation exposure time
ascdsver	8.4.5	Processing system revision	ontime	14492.201626092	Sum of GTIs [s]
caldbver	4.5.2	 	ontime2	14492.037466079	Sum of GTIs [s]
date	2012-11-10T22:05:56	Date and time of file creation	ontime3	14482.655625224	Sum of GTIs [s]
revision	3	Processing version of data	ontime5	14492.160586089	Sum of GTIs [s]
			ontime6	14492.119546086	Sum of GTIs [s]
			ontime7	14492.201626092	Sum of GTIs [s]
			l1events	600347	Number of level 1 events

2.1.4 Events

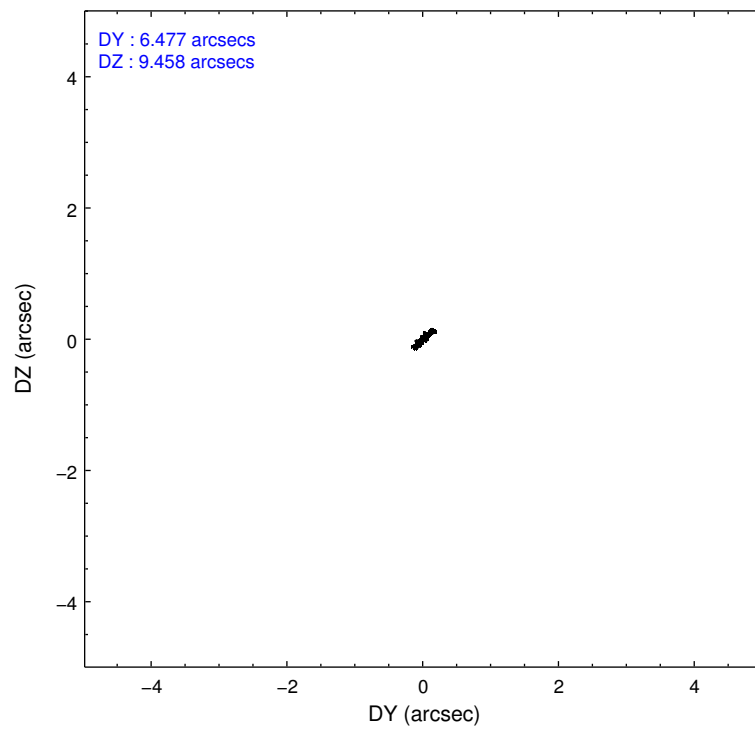
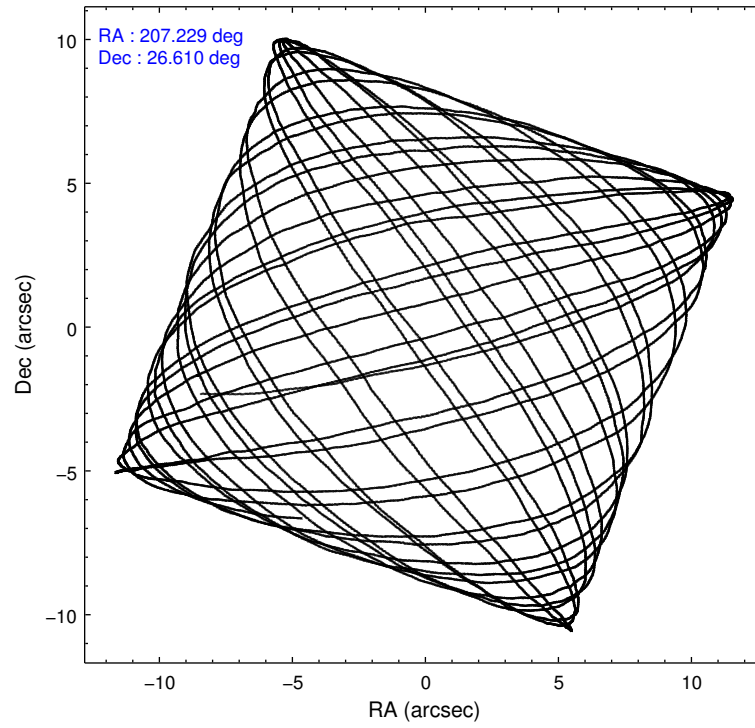
	ccd 2	ccd 3	ccd 5	ccd 6	ccd 7
level 1 events	73724	73360	106898	83781	262584
rejected events	65779	65749	50674	62801	45708
rejected %	89%	89%	47%	74%	17%

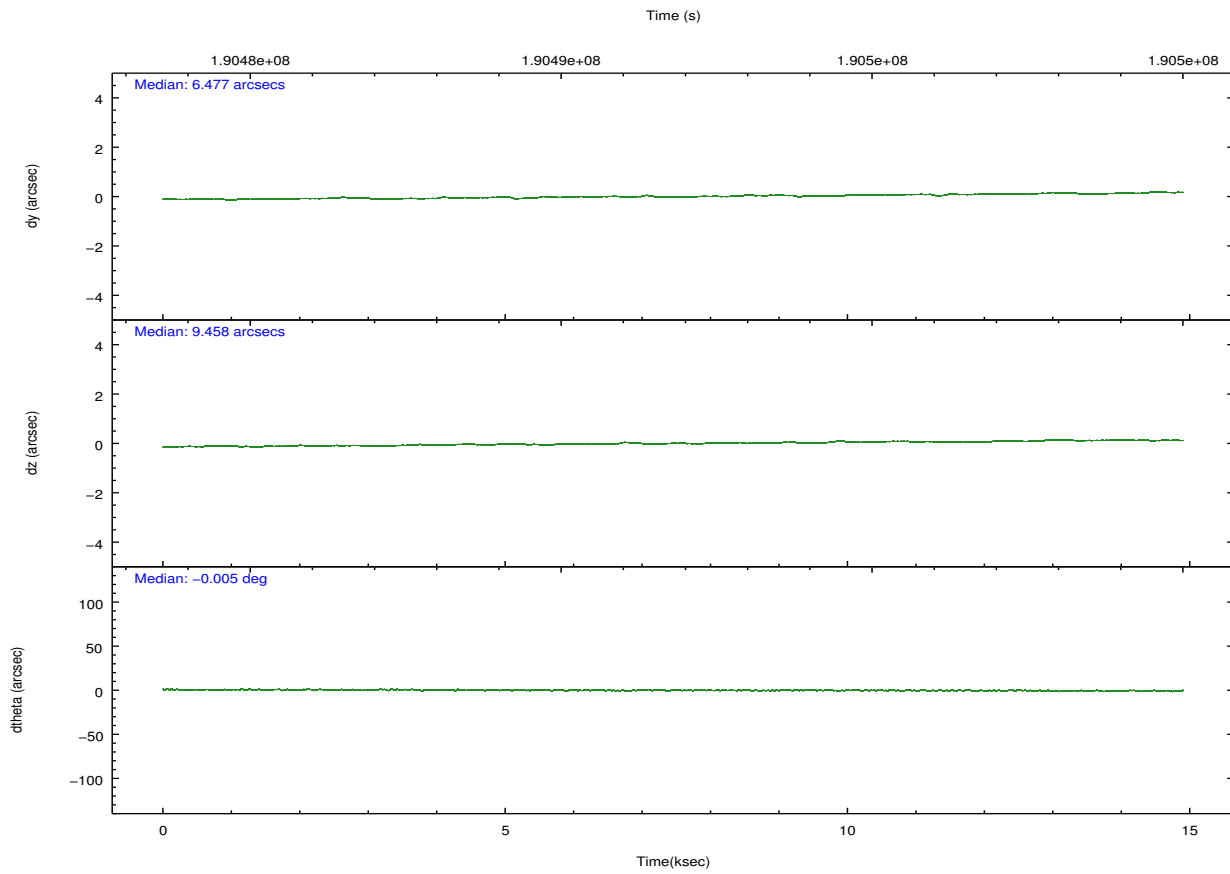
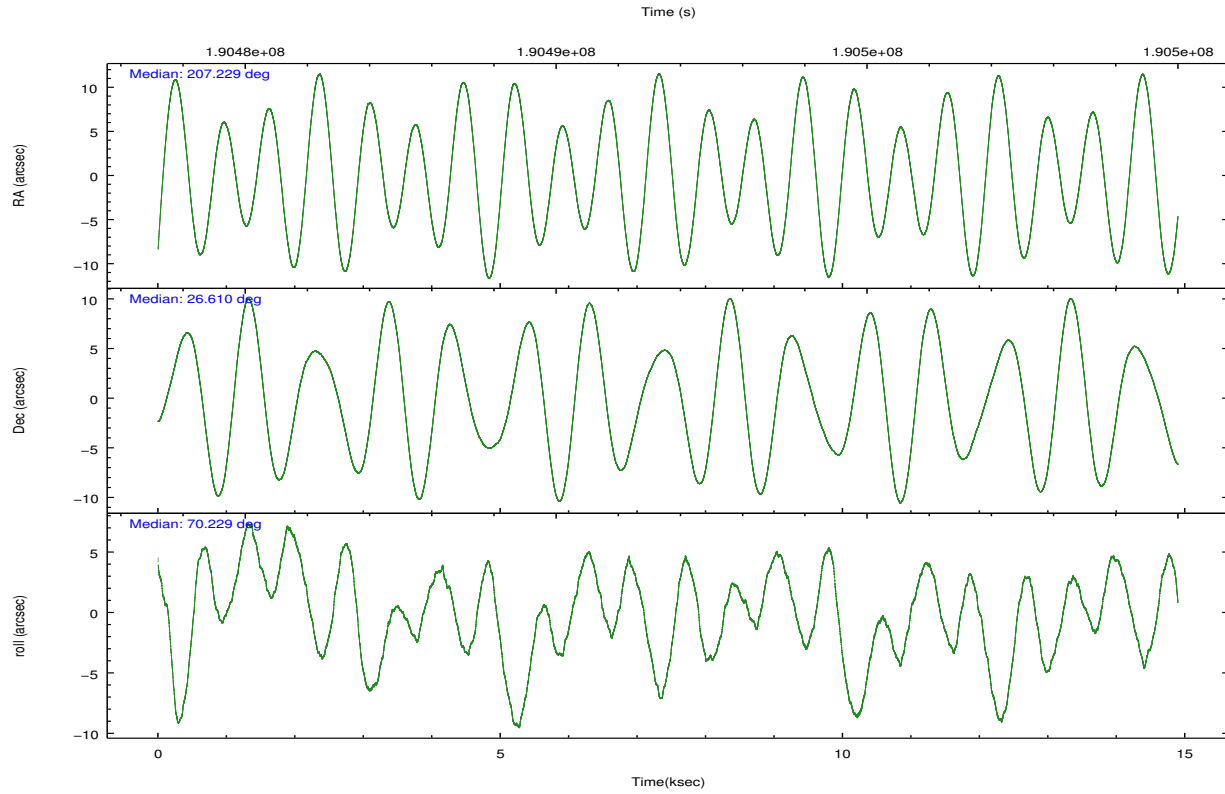
	ccd 2	ccd 3	ccd 5	ccd 6	ccd 7
grade 0 events	3283	3111	10867	13671	61429
	4%	4%	10%	16%	23%
grade 1 events	34	39	257	72	151
	0%	0%	0%	0%	0%
grade 2 events	1676	1458	14379	2934	54273
	2%	1%	13%	3%	20%
grade 3 events	827	839	2596	1235	24171
	1%	1%	2%	1%	9%
grade 4 events	831	830	2417	1208	23881
	1%	1%	2%	1%	9%
grade 5 events	2343	2908	8598	2977	9655
	3%	3%	8%	3%	3%
grade 6 events	1329	1374	25974	1935	53180
	1%	1%	24%	2%	20%
grade 7 events	63401	62801	41810	59749	35844
	85%	85%	39%	71%	13%

2.2 Compared Parameters

Parameter	Planned	Actual	Parameter	Planned	Actual
Instrument	ACIS	ACIS	Obspar format version number	7	7
Detector	ACIS-23567	ACIS-23567	Obspar file type	PREDICTED	ACTUAL
Grating	NONE	NONE	Obspar update status	NONE	UPDATED
Data mode	VFAINT	VFAINT	Number of optional ACIS chips dropped	0	0
Observation mode	POINTING	POINTING	On-chip summing requested	N	N
[deg] Pointing RA	207.235036	207.2292202997473	Subarray requested	NONE	NONE
[deg] Pointing Dec	26.582991	26.60974254170479	Alternating exposures requested	N	N
[deg] Pointing Roll	70.076944	70.23617562755717	[s] Primary exposure time	0.000000	3.1
[mm] SIM focus pos	-0.684267	-0.6828225247311905			
[mm] SIM defocus	0	0.001444936568705701			
[mm] SIM translation stage pos	-190.132523	-190.1400660498719			
[mm] SIM translation stage offset	0	0.00754346686406393			
[s] Observation start time (MET)	190484537.184000	190484161.1744			
Observation start date	2004-01-14T16:21:13	2004-01-14T16:16:01			
[s] Observation end time (MET)	190499252.184000	190499800.62508			
Observation end date	2004-01-14T20:26:28	2004-01-14T20:36:40			
Read mode	TIMED	TIMED			

2.3 Aspect



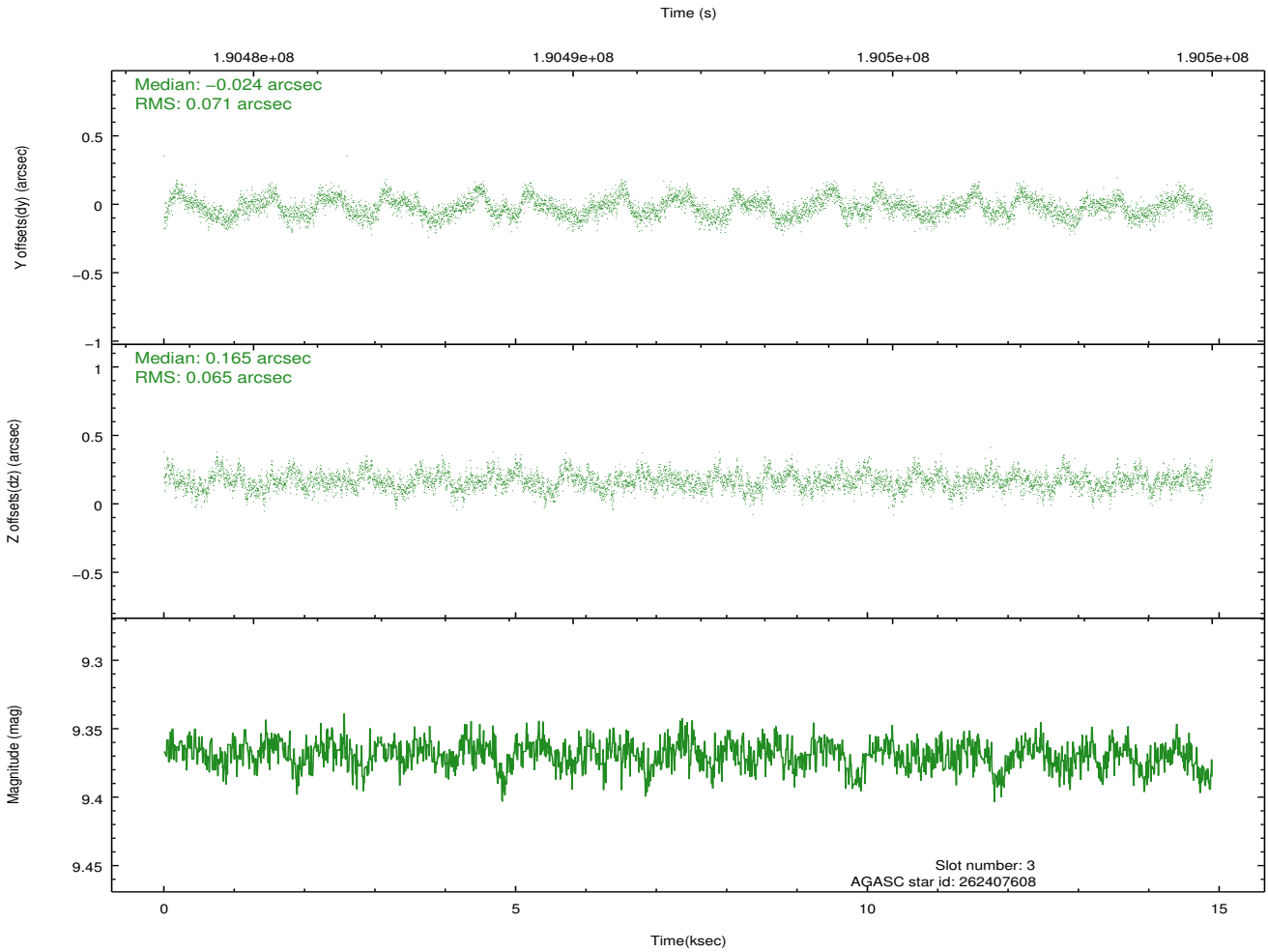
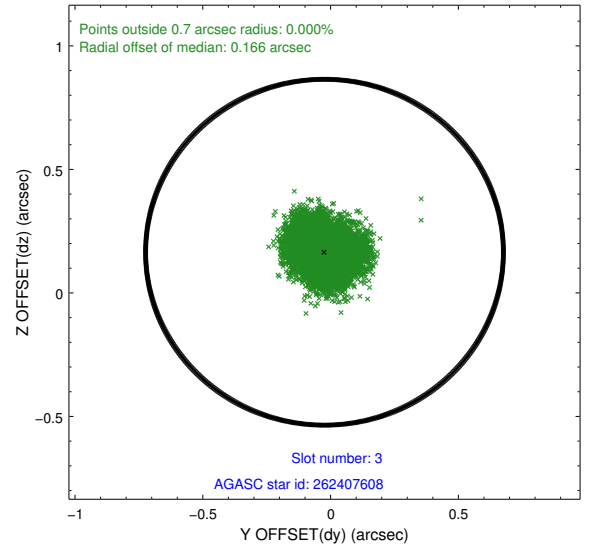
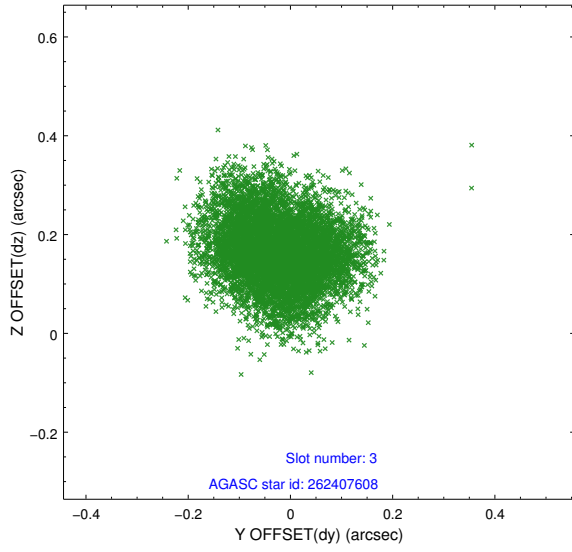


Slot Statistics

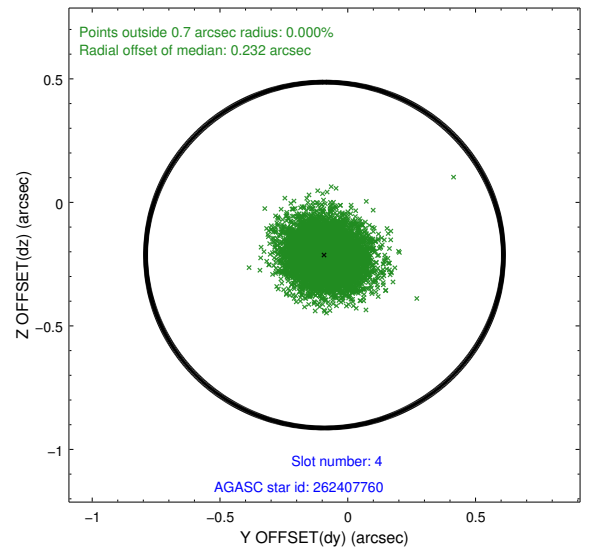
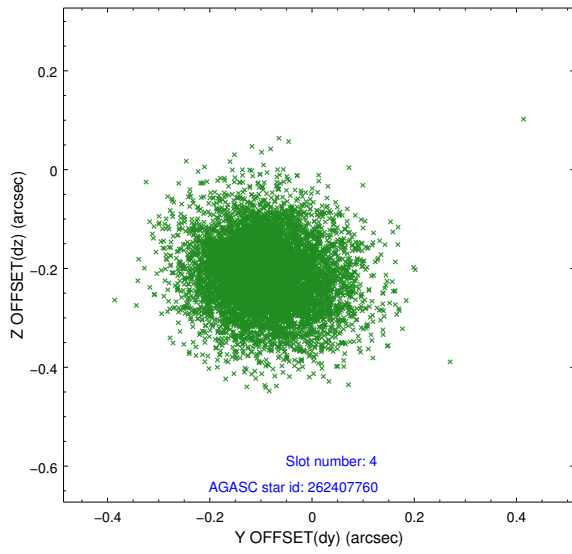
slot	status	id	mag	n_pts	med_dy	med_dz	dr1	dr2	ra	dec	mean_y	mean_z
0	FID	ACIS-S-2	7.10	3634	-0.049	-0.035	0.006	0.010	0.000000	0.000000	-759.26	-1730.73
1	FID	ACIS-S-4	7.20	3634	0.082	0.033	0.005	0.009	0.000000	0.000000	2154.00	177.53
2	FID	ACIS-S-5	7.23	3634	-0.064	0.011	0.007	0.011	0.000000	0.000000	-1811.74	171.49
3	GUIDE	262407608	9.37	7266	-0.024	0.165	0.104	0.163	207.378401	26.435507	-341.17	-614.98
4	GUIDE	262407760	9.93	7197	-0.091	-0.213	0.113	0.185	206.566773	26.577263	-747.53	2017.71
5	GUIDE	262408096	9.35	7263	0.028	-0.018	0.080	0.131	207.011678	26.515421	-473.21	594.40
6	GUIDE	262408936	9.66	7259	-0.030	-0.096	0.096	0.157	207.154731	26.726554	398.04	419.13
7	GUIDE	262411960	9.69	7266	0.111	0.162	0.115	0.187	207.327895	25.881727	-2270.35	-1142.83

2.4 Star Slots

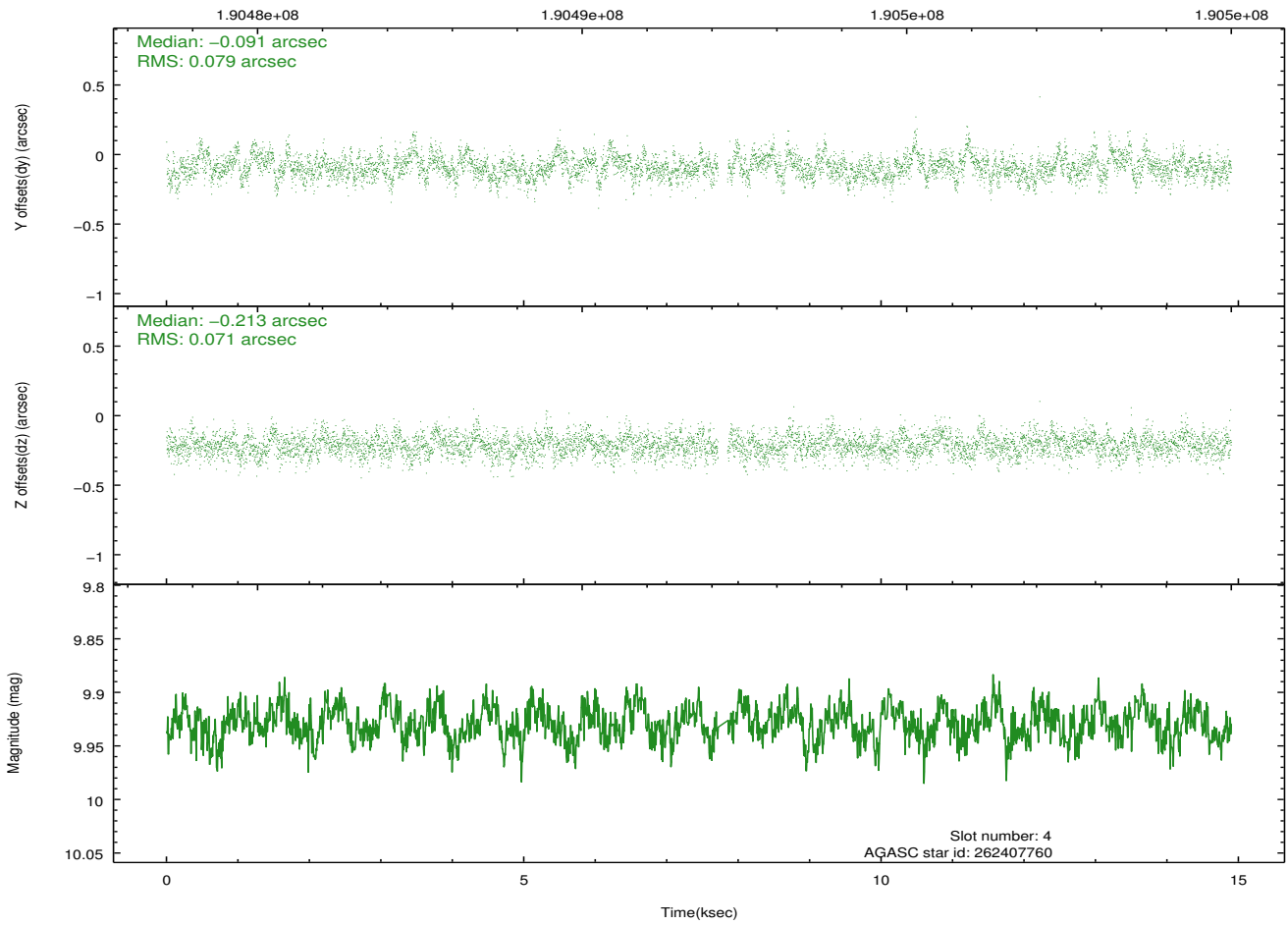
2.4.1 Slot 3



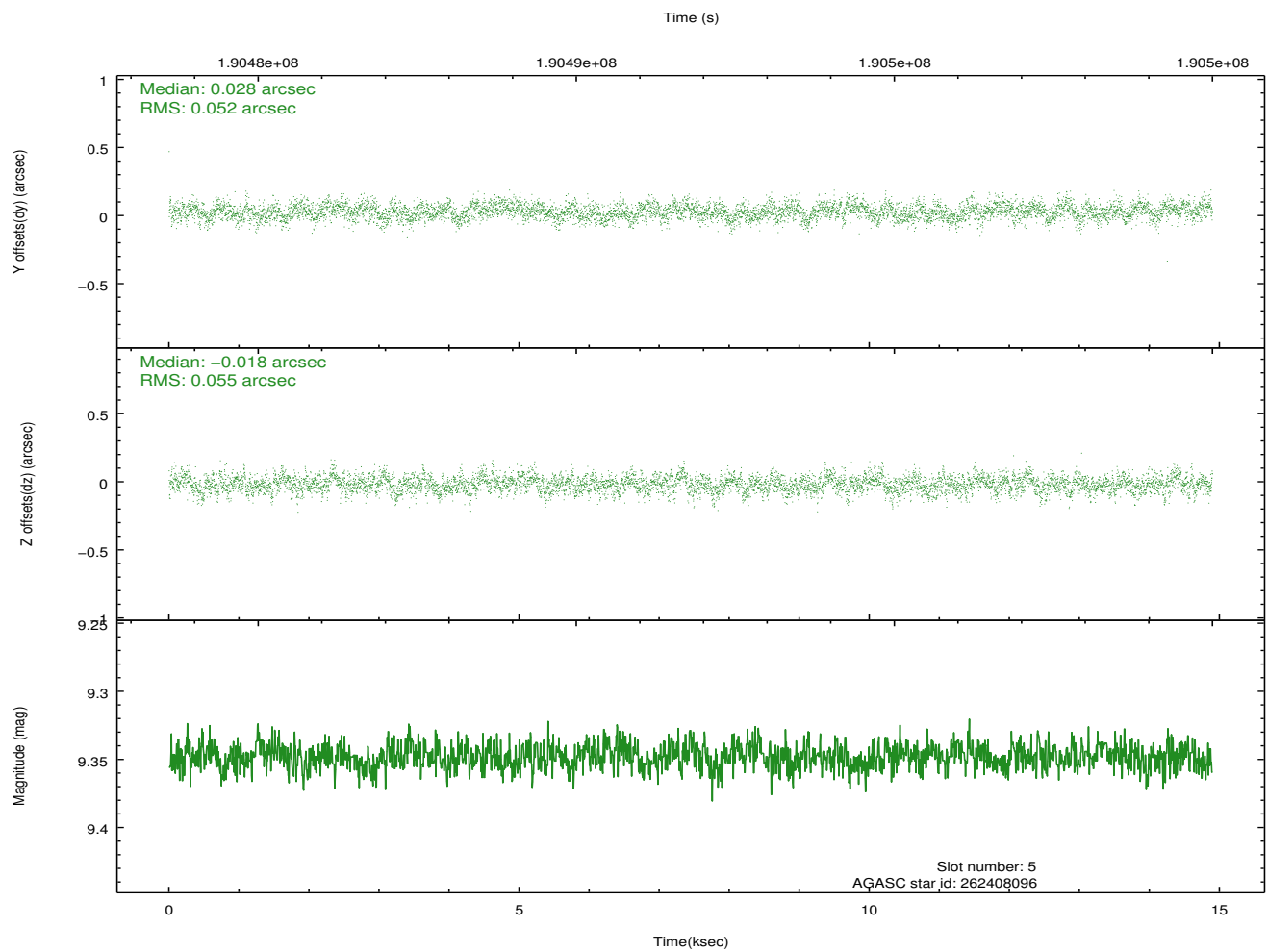
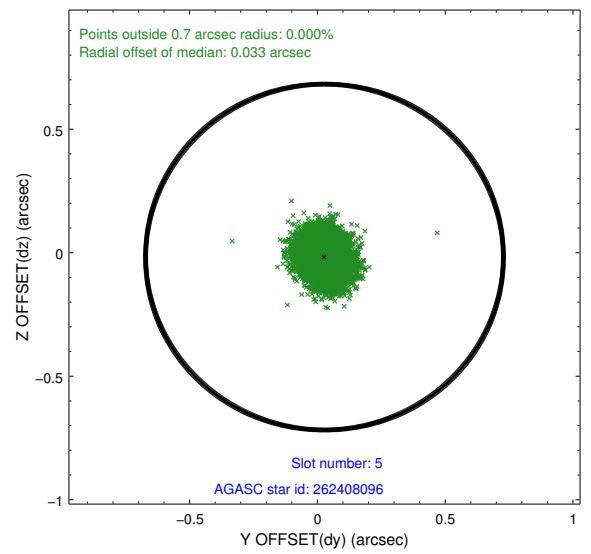
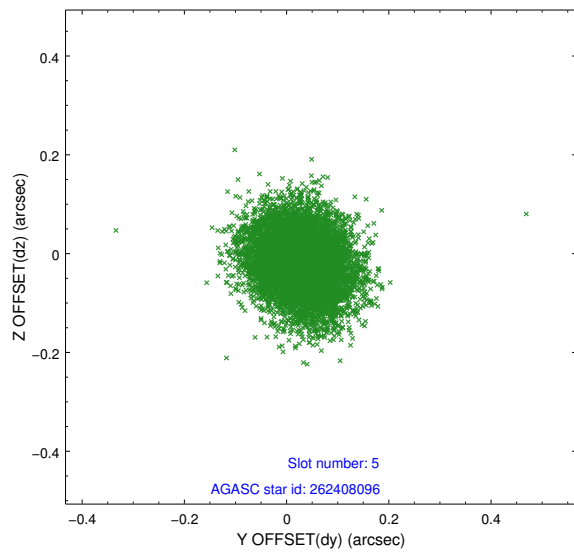
2.4.2 Slot 4



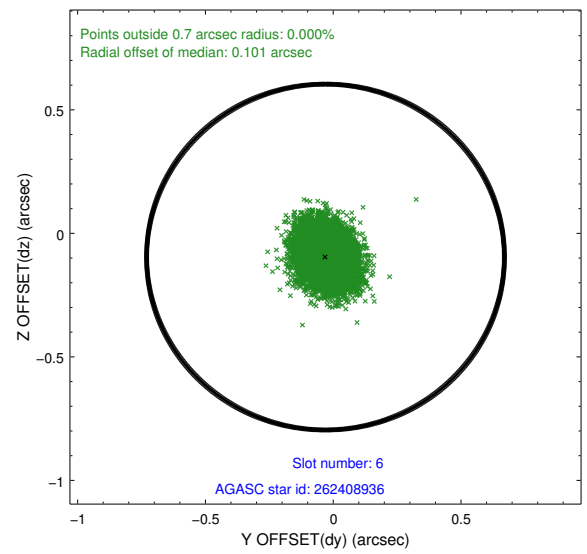
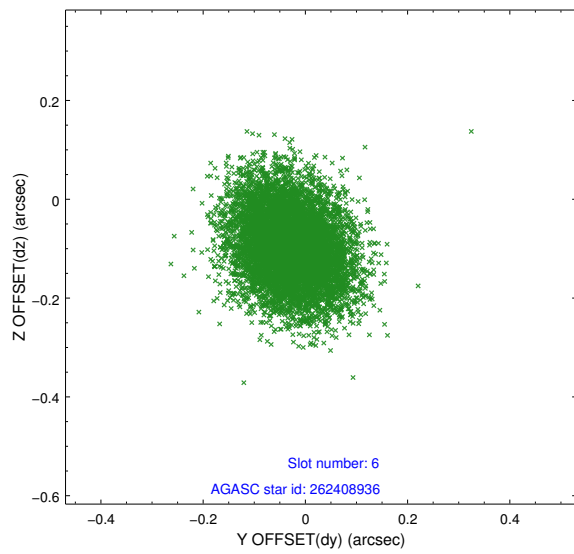
Time (s)



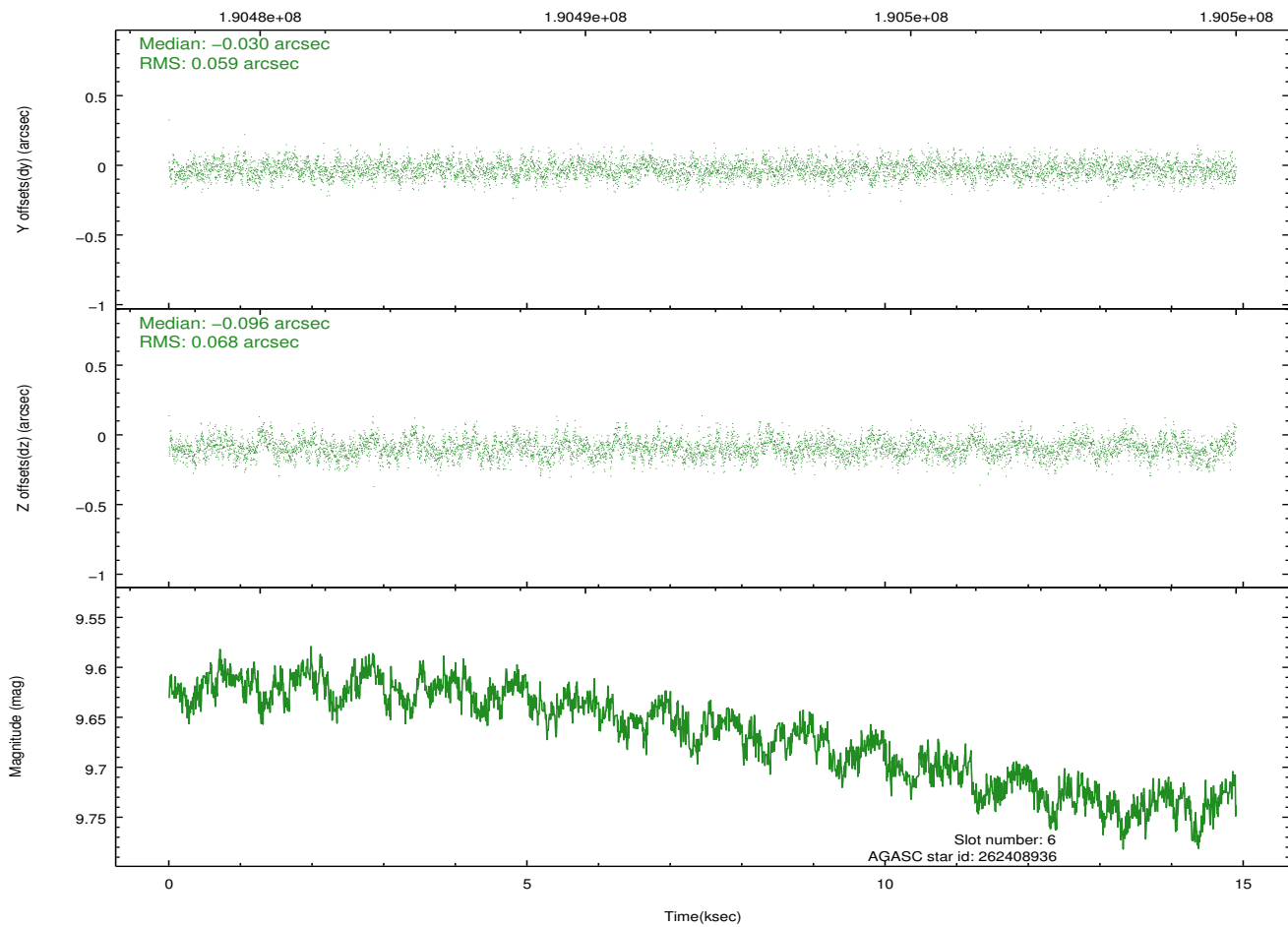
2.4.3 Slot 5



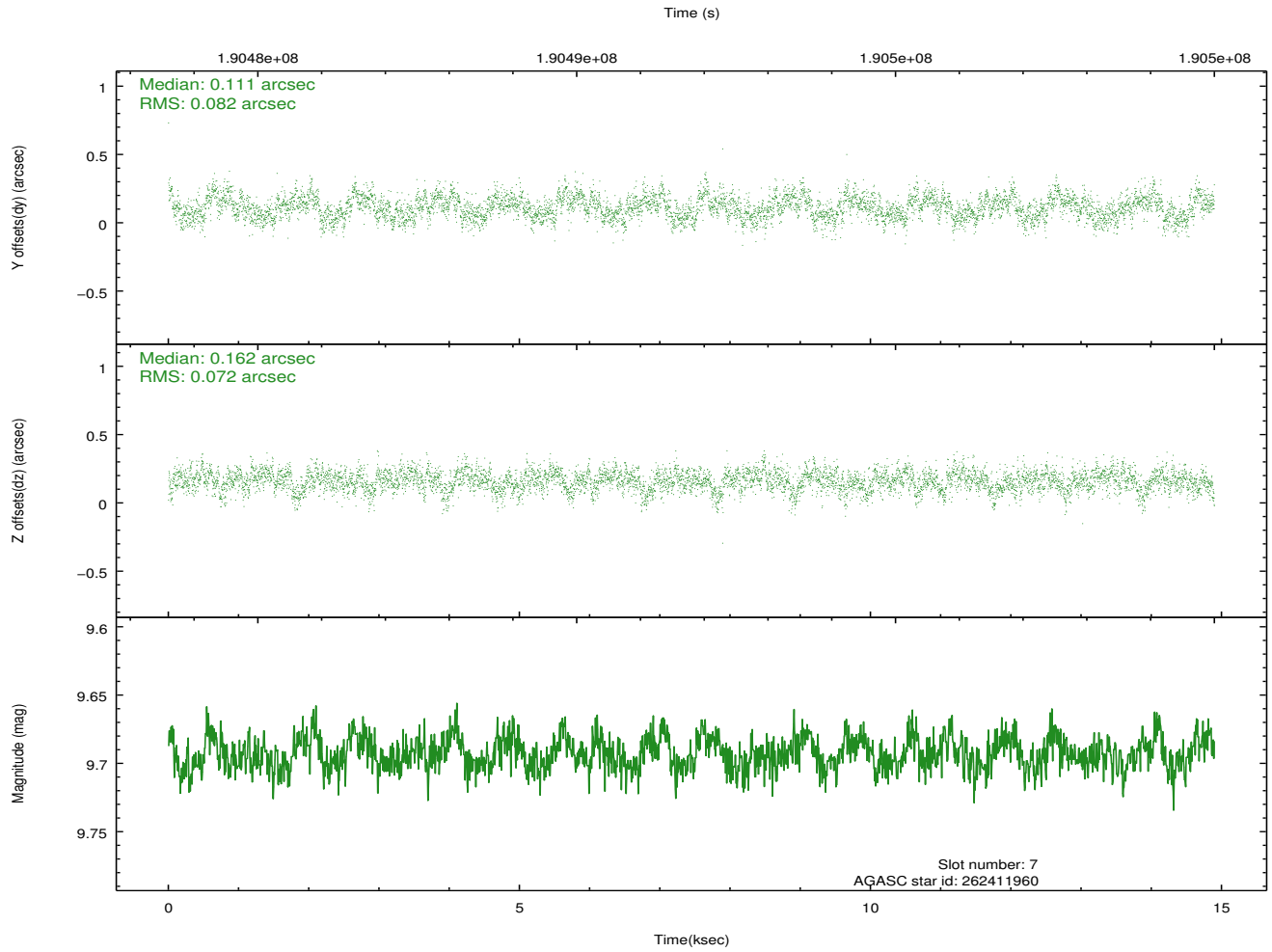
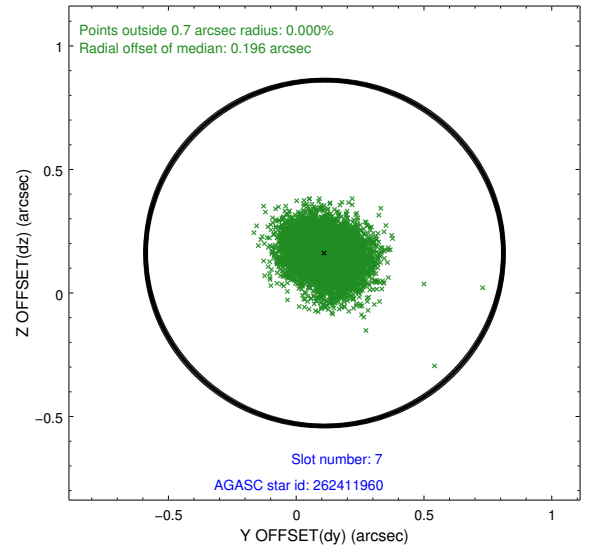
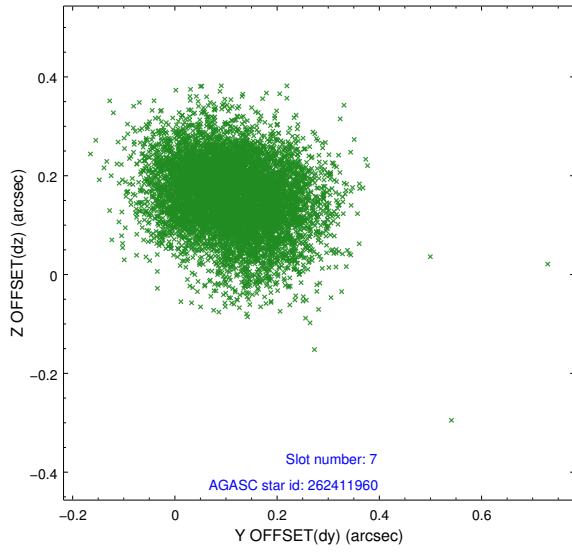
2.4.4 Slot 6



Time (s)

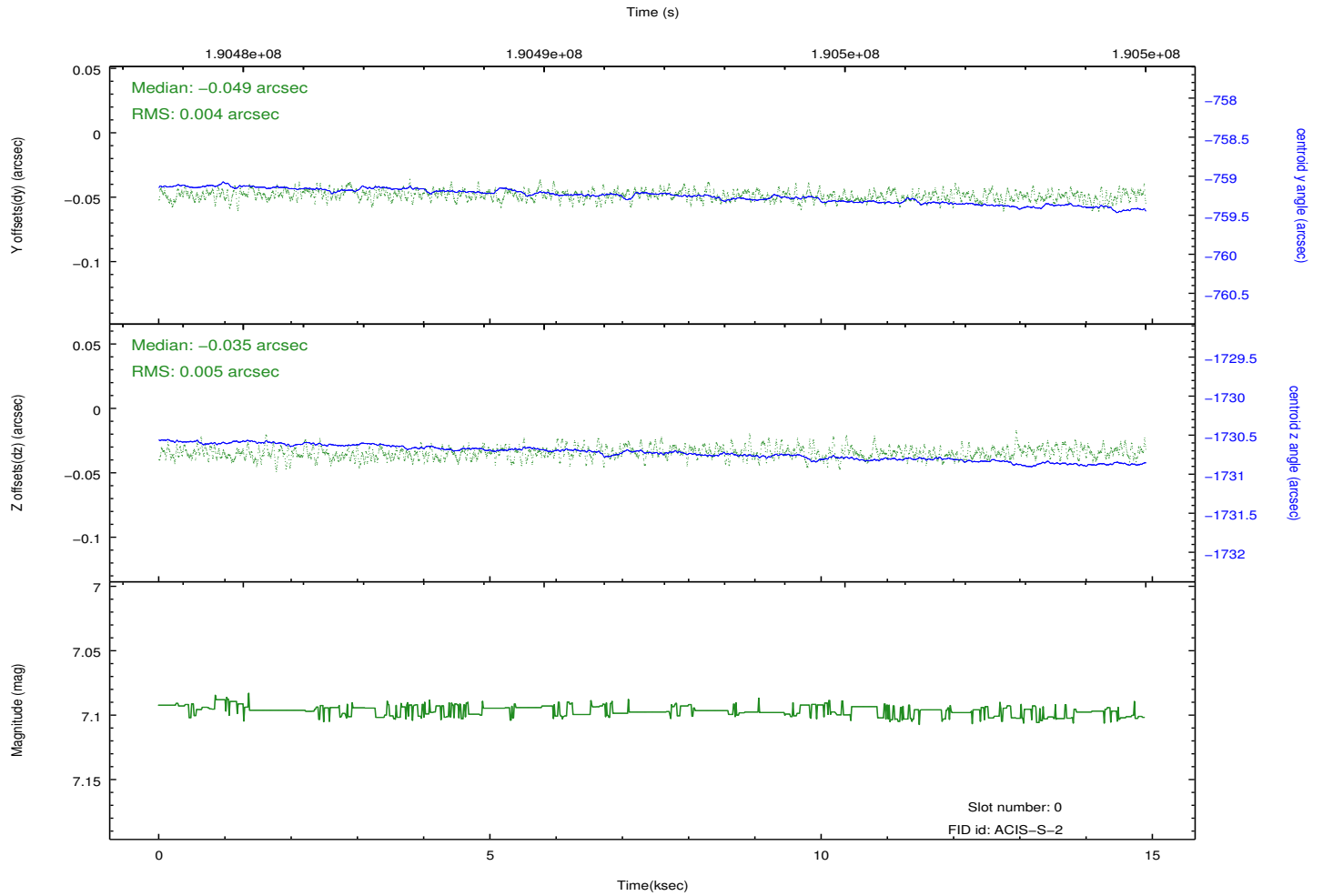
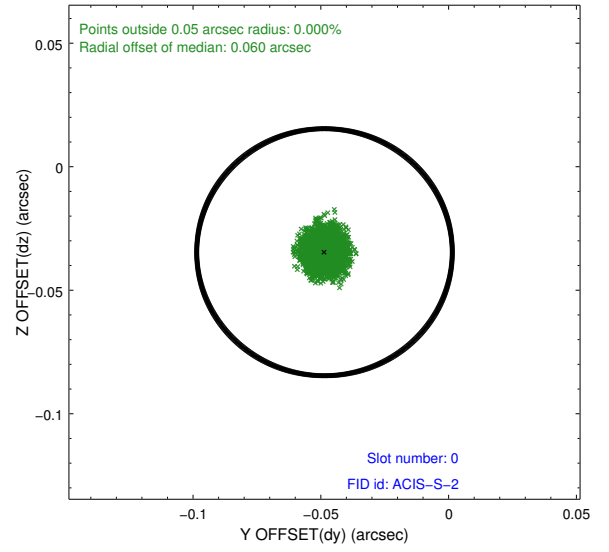
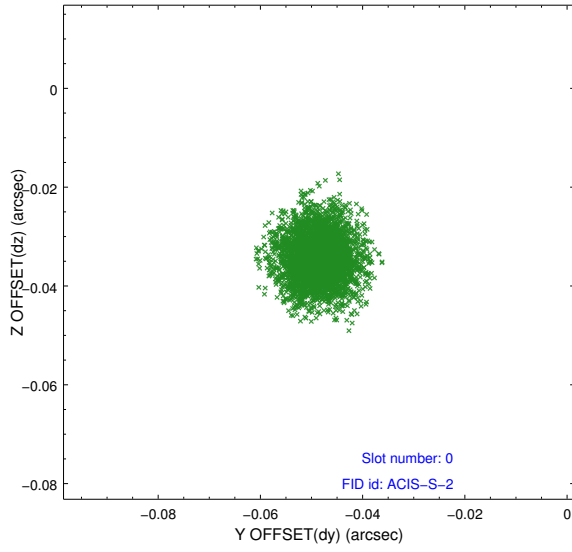


2.4.5 Slot 7

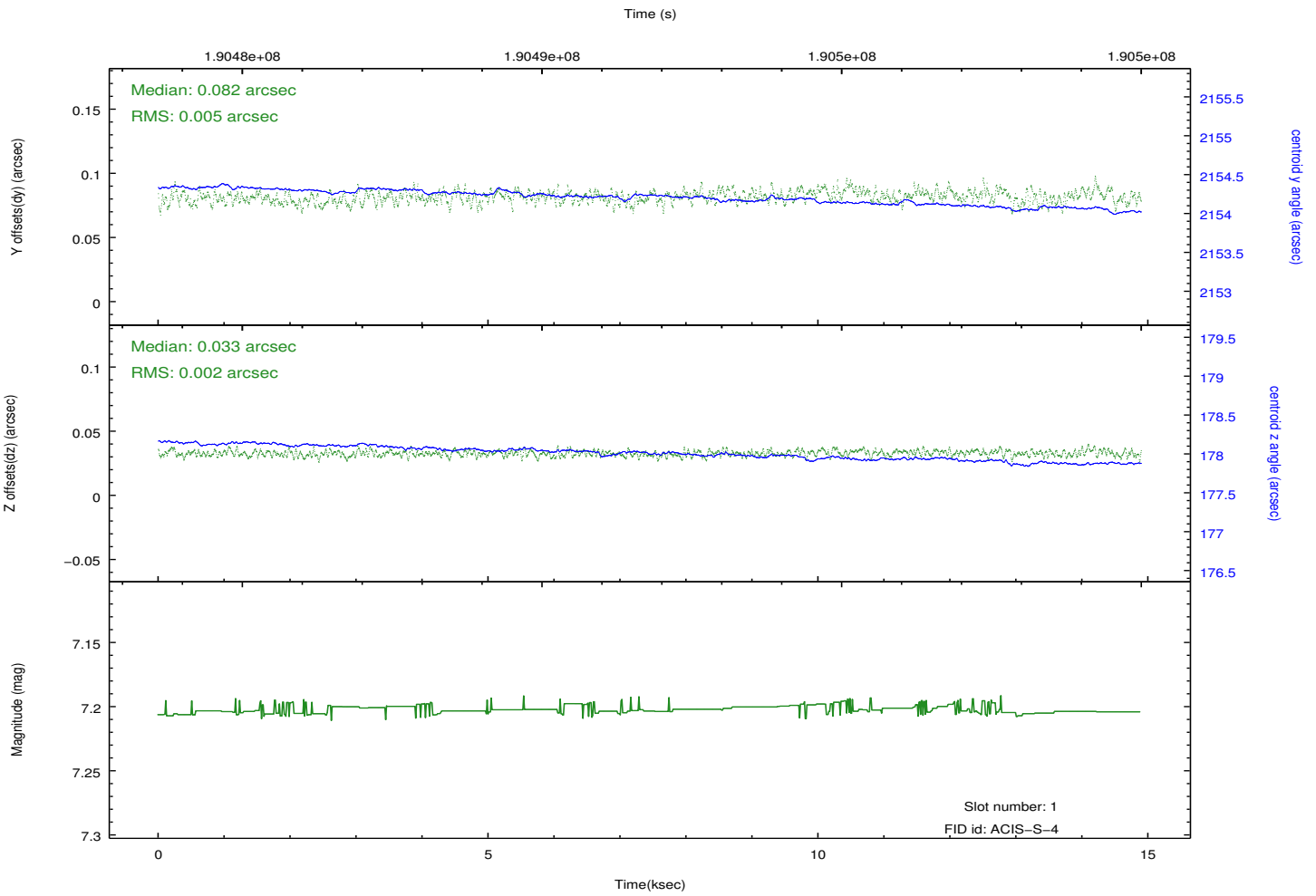
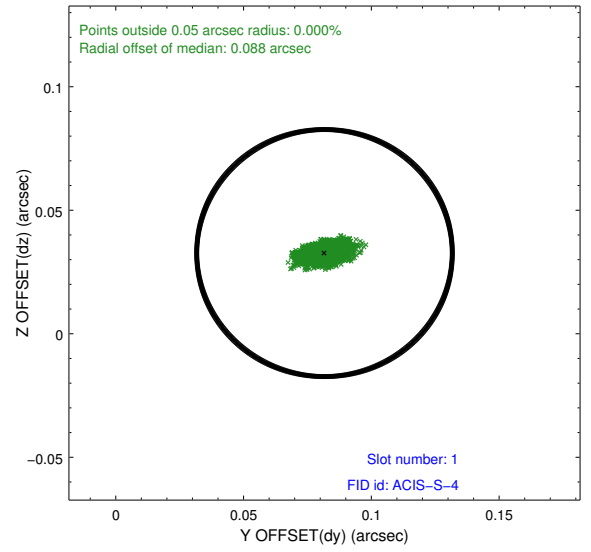
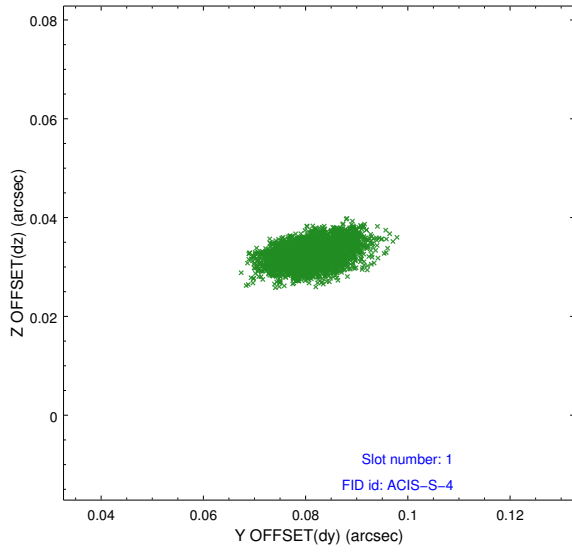


2.5 FID Slots

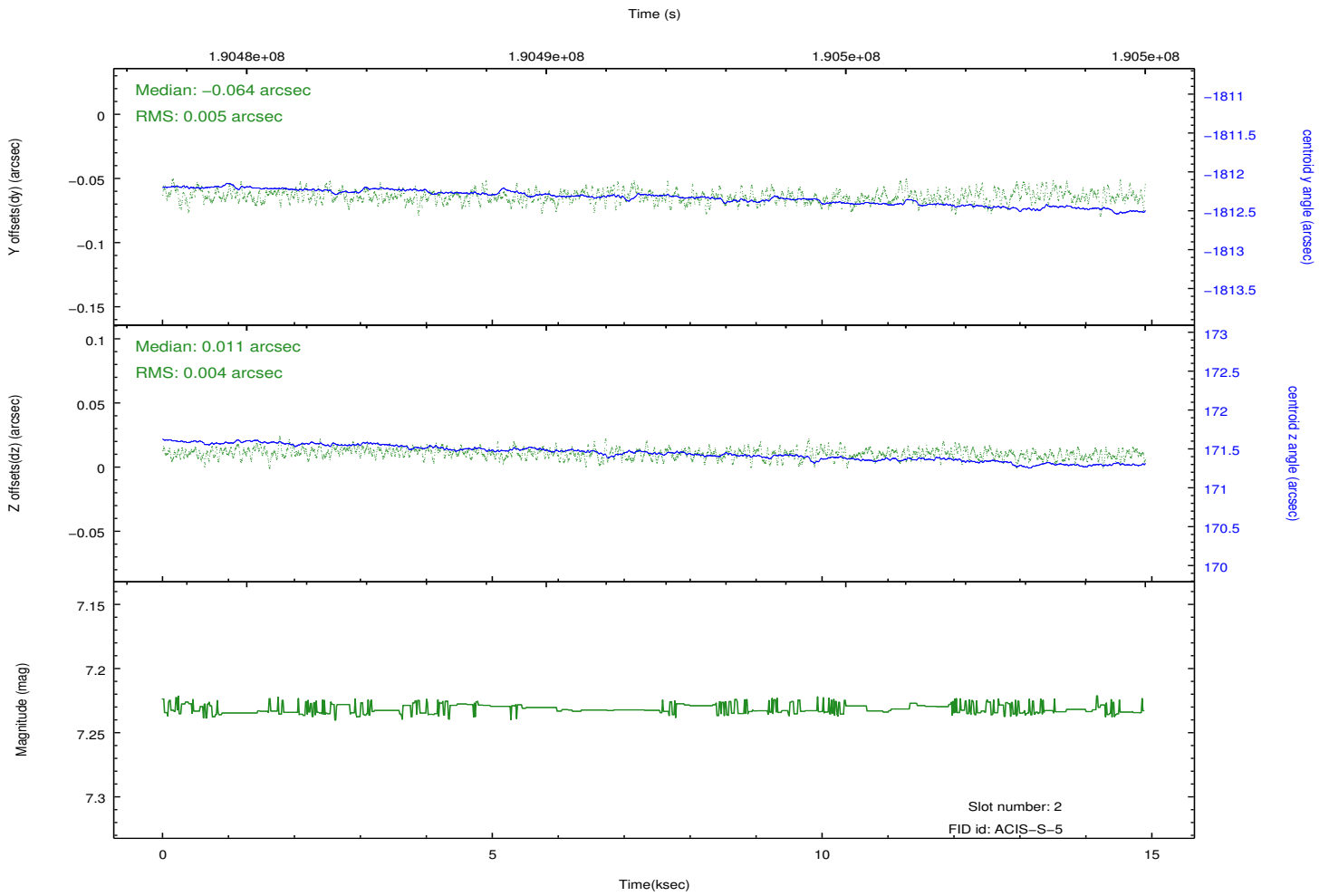
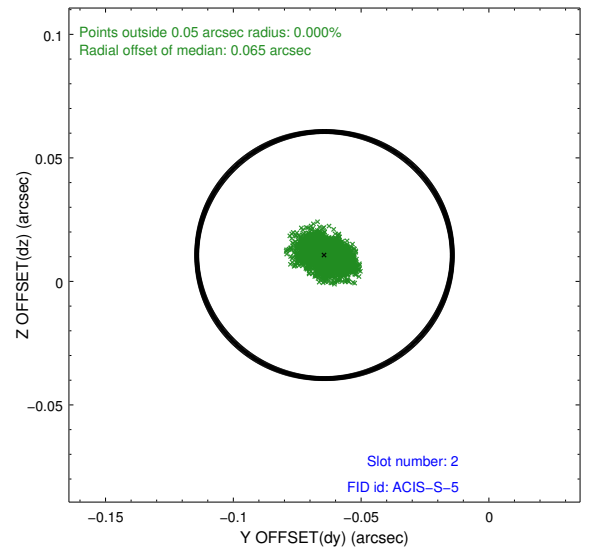
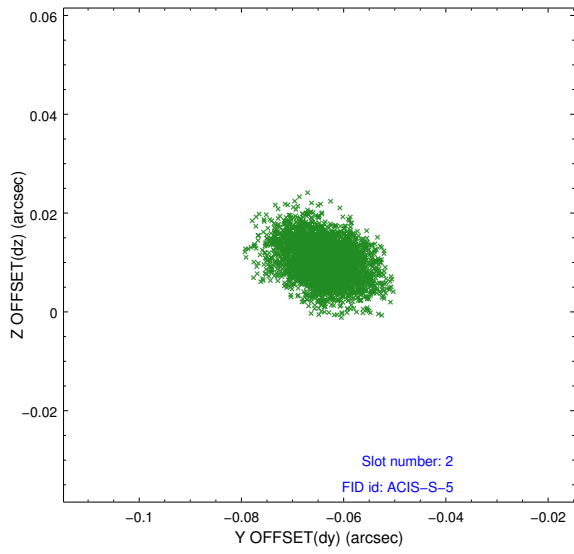
2.5.1 Slot 0



2.5.2 Slot 1



2.5.3 Slot 2



A Summary

A.1 Status

V&V Scientist	Jen Lauer
V&V Date (YYYY-MM-DD)	2012.12.10
V&V Edition	1
V&V Disposition and Status	OK
V&V Charge Time	14.492

A.2 Comments