

V&V Reference Report

L2 ASCDS Version : 8.4.5

Observation 5297 - L2 Version 3
Chandra X-Ray Center

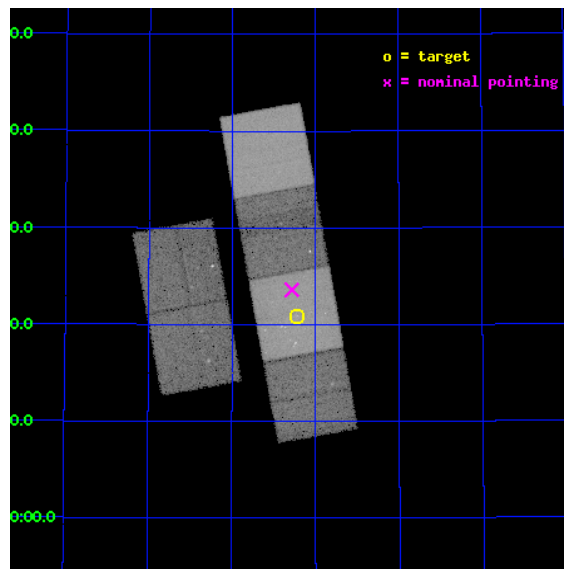
L2 Processing Date : Nov 10 2012

Contents

1	Front	2
2	OBI	3
2.1	OBI	3
2.1.1	Images	3
2.1.2	Bias	3
2.1.3	Parameters	4
2.1.4	Events	4
2.2	Compared Parameters	5
2.3	Aspect	6
2.4	Star Slots	9
2.4.1	Slot 3	9
2.4.2	Slot 4	10
2.4.3	Slot 5	11
2.4.4	Slot 6	12
2.4.5	Slot 7	13
2.5	FID Slots	14
2.5.1	Slot 0	14
2.5.2	Slot 1	15
2.5.3	Slot 2	16
A	Summary	17
A.1	Status	17
A.2	Comments	17

1 Front

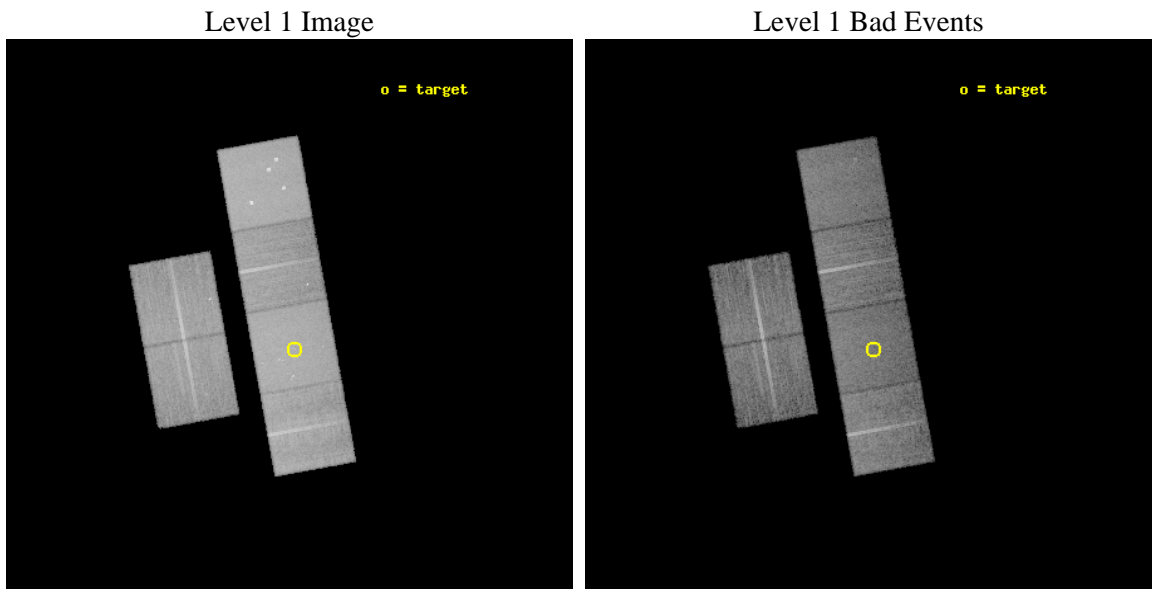
seq_num	600386	Sequence number
obs_id	5297	Observation id
title	An Ultra-Deep Study of M101	Proposal title
observer	Dr. K.D. Kuntz	Principal investigator
object	M101	Source name
dtcycle	0	
cycle	P	events from which exps? Prim/Second/Both
ra_targ	210.80375	Observer's specified target RA [deg]
dec_targ	54.348778	Observer's specified target Dec [deg]
ra_nom	210.82074074304	Nominal RA [deg]
dec_nom	54.393433120065	Nominal Dec [deg]
roll_nom	79.742818878585	Nominal Roll [deg]
revision	3	Processing version of data
ontime	21963.873942405	Sum of GTIs [s]
liveltime	21685.754145489	Livetime [s]
ontime2	21963.914982408	Sum of GTIs [s]
ontime3	21963.750822395	Sum of GTIs [s]
ontime5	21963.832902402	Sum of GTIs [s]
ontime6	21960.550892115	Sum of GTIs [s]
ontime7	21963.873942405	Sum of GTIs [s]
ontime8	21963.709782422	Sum of GTIs [s]
l2events	304687	Number of level 2 events



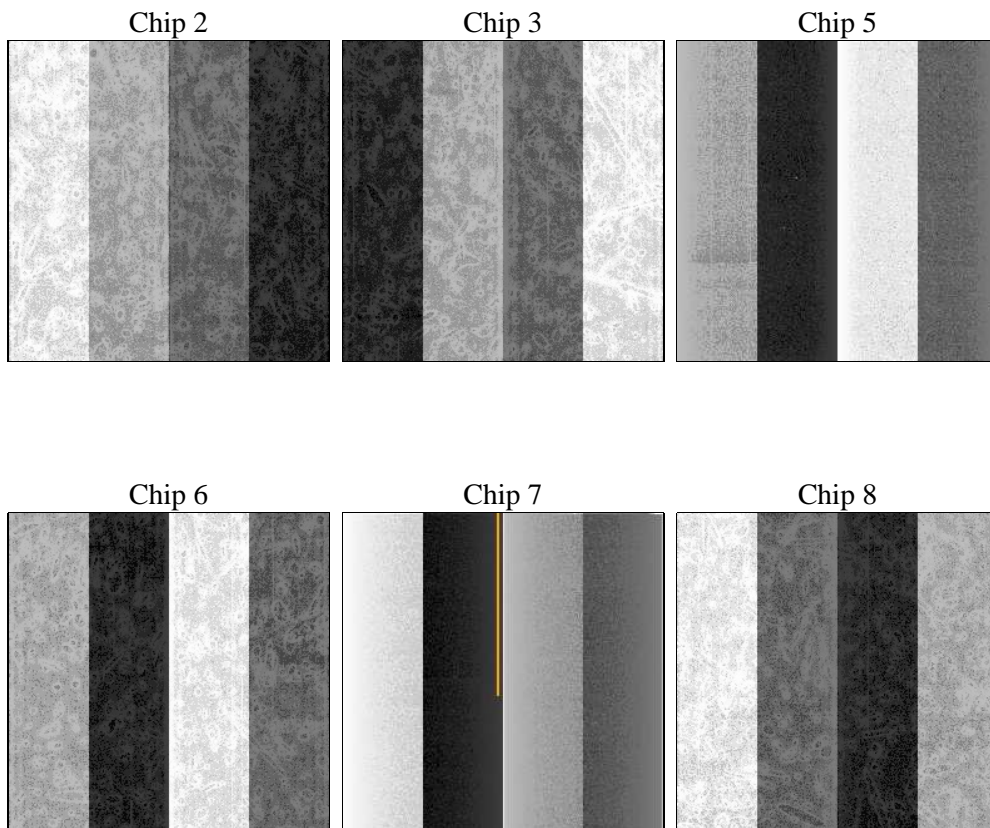
2 OBI

2.1 OBI

2.1.1 Images



2.1.2 Bias



2.1.3 Parameters

obi_num	1	Obi number	sched_exp_time	22000.000000	[s] Scheduled observation exposure time
ascdsver	8.4.5	Processing system revision	ontime	21963.873942405	Sum of GTIs [s]
caldsver	4.5.2	 	ontime2	21963.914982408	Sum of GTIs [s]
date	2012-11-10T22:23:48	Date and time of file creation	ontime3	21963.750822395	Sum of GTIs [s]
revision	3	Processing version of data	ontime5	21963.832902402	Sum of GTIs [s]
			ontime6	21960.550892115	Sum of GTIs [s]
			ontime7	21963.873942405	Sum of GTIs [s]
			ontime8	21963.709782422	Sum of GTIs [s]
			l1events	1023031	Number of level 1 events

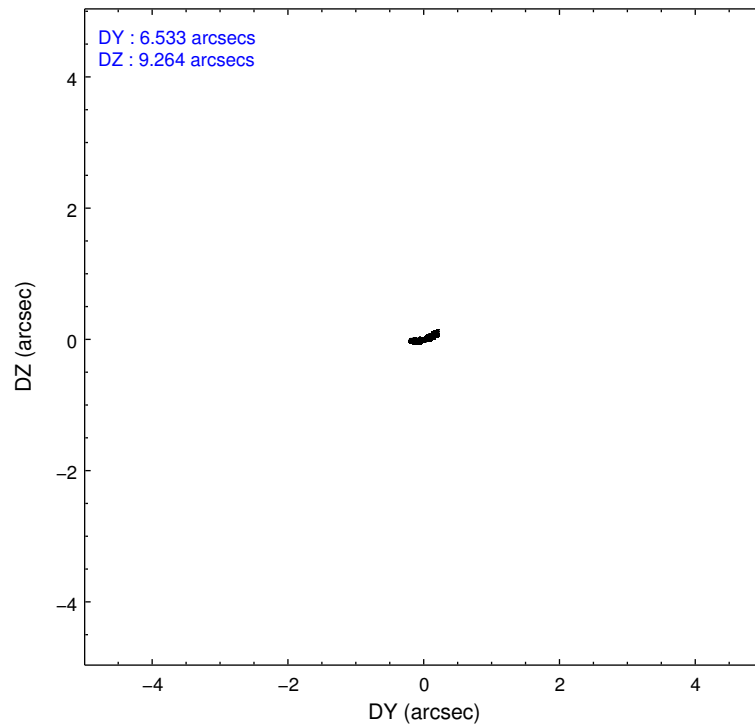
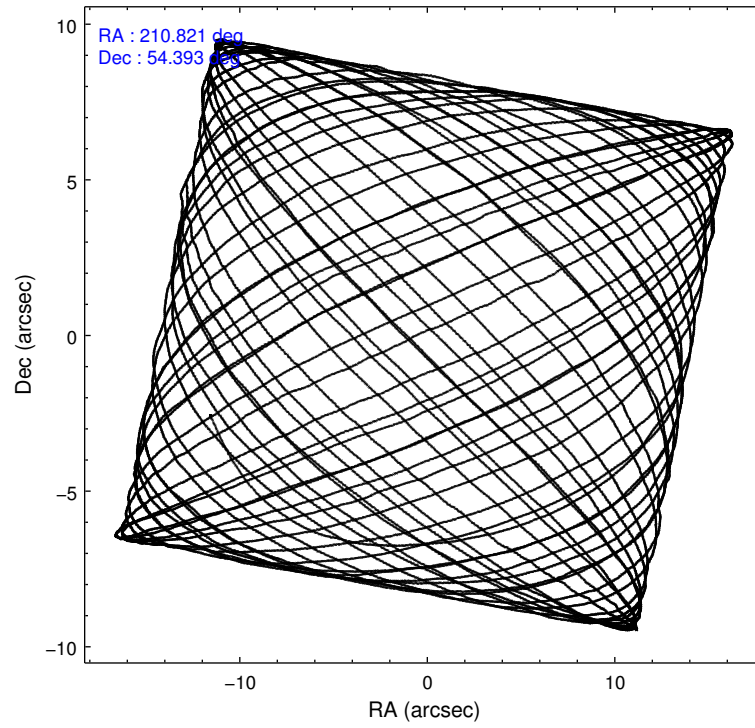
2.1.4 Events

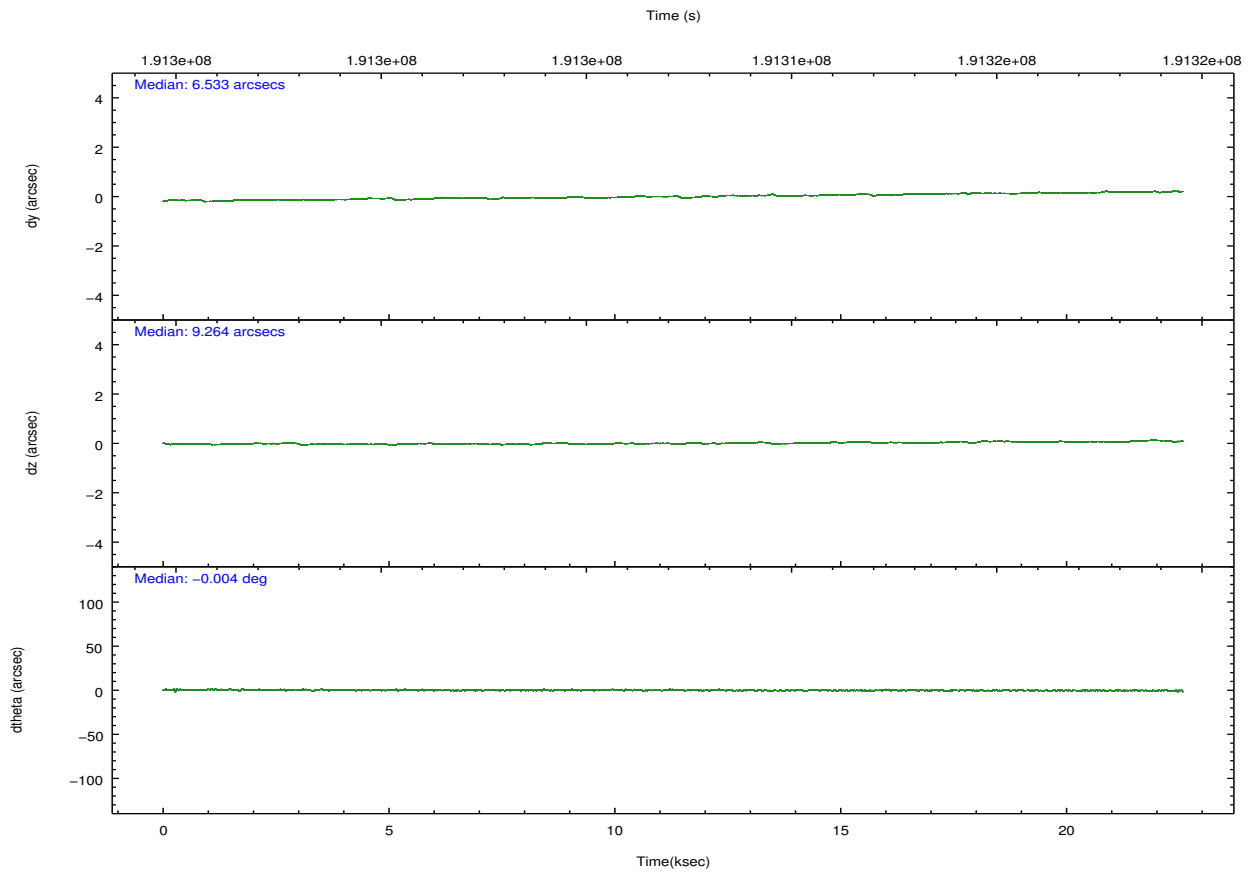
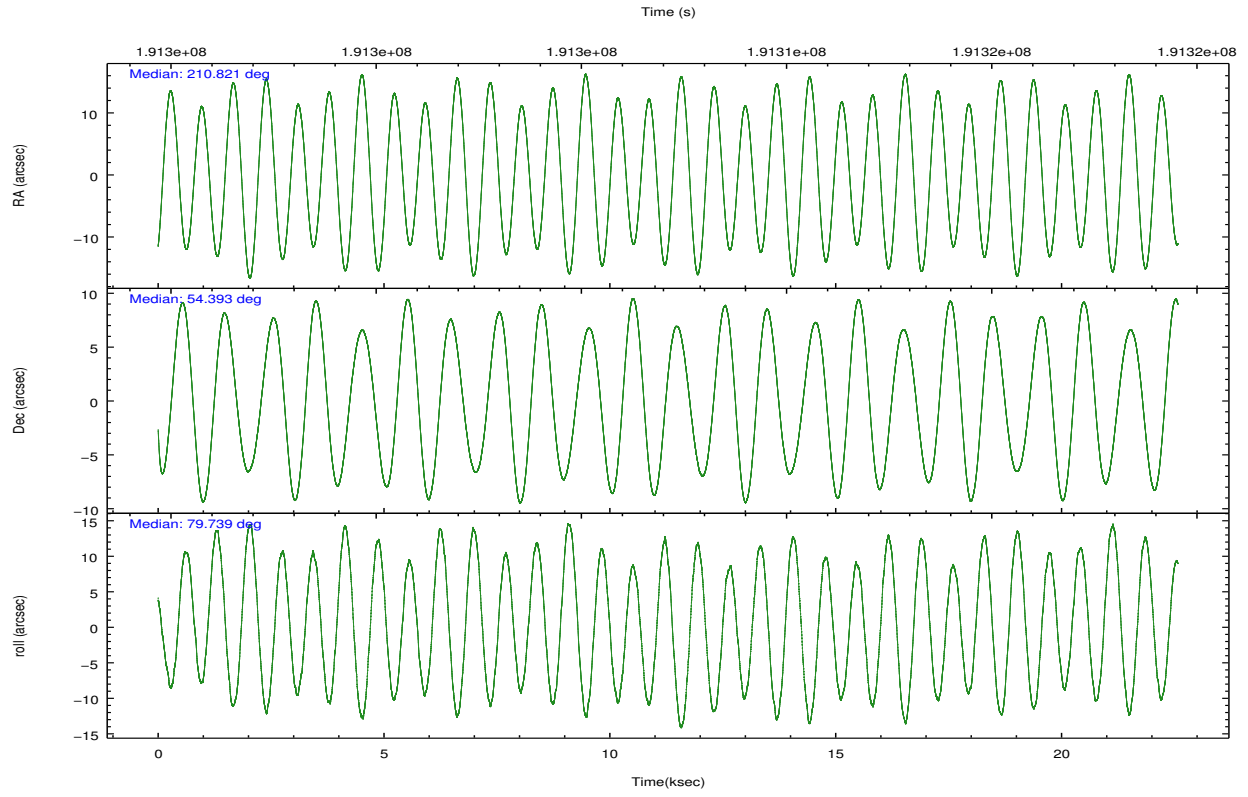
	ccd 2	ccd 3	ccd 5	ccd 6	ccd 7	ccd 8		ccd 2	ccd 3	ccd 5	ccd 6	ccd 7	ccd 8
level 1 events	142291	132627	223041	141921	206352	176799	grade 0 events	14984	14361	15596	15810	11099	21386
rejected events	116350	107249	107689	113588	104134	127131		10%	10%	6%	11%	5%	12%
rejected %	81%	80%	48%	80%	50%	71%	grade 1 events	109	114	260	98	172	137
								0%	0%	0%	0%	0%	0%
							grade 2 events	4292	4190	32910	5099	19333	9246
								3%	3%	14%	3%	9%	5%
							grade 3 events	1751	1753	4991	1806	8611	4798
								1%	1%	2%	1%	4%	2%
							grade 4 events	1755	1873	4759	1754	8314	4399
								1%	1%	2%	1%	4%	2%
							grade 5 events	5189	5758	14809	5948	17063	7794
								3%	4%	6%	4%	8%	4%
							grade 6 events	3164	3202	57110	3869	54869	9847
								2%	2%	25%	2%	26%	5%
							grade 7 events	111047	101376	92606	107537	86891	119192
								78%	76%	41%	75%	42%	67%

2.2 Compared Parameters

Parameter	Planned	Actual	Parameter	Planned	Actual
Instrument	ACIS	ACIS	Obspar format version number	7	7
Detector	ACIS-235678	ACIS-235678	Obspar file type	PREDICTED	ACTUAL
Grating	NONE	NONE	Obspar update status	NONE	UPDATED
Data mode	VFAINT	VFAINT	Number of optional ACIS chips dropped	0	0
Observation mode	POINTING	POINTING	On-chip summing requested	N	N
[deg] Pointing RA	210.837114	210.8207407430399	Subarray requested	NONE	NONE
[deg] Pointing Dec	54.367910	54.39343312006455	Alternating exposures requested	N	N
[deg] Pointing Roll	79.572882	79.7428188785849	[s] Primary exposure time	0.000000	3.2
[mm] SIM focus pos	-0.684267	-0.6828225247311905			
[mm] SIM defocus	0	0.001444936568705701			
[mm] SIM translation stage pos	-190.132523	-190.1425803651734			
[mm] SIM translation stage offset	0	0.01005778216563158			
[s] Observation start time (MET)	191296400.184000	191295242.68477			
Observation start date	2004-01-24T01:52:16	2004-01-24T01:34:02			
[s] Observation end time (MET)	191318400.184000	191319064.71081			
Observation end date	2004-01-24T07:58:56	2004-01-24T08:11:04			
Read mode	TIMED	TIMED			

2.3 Aspect



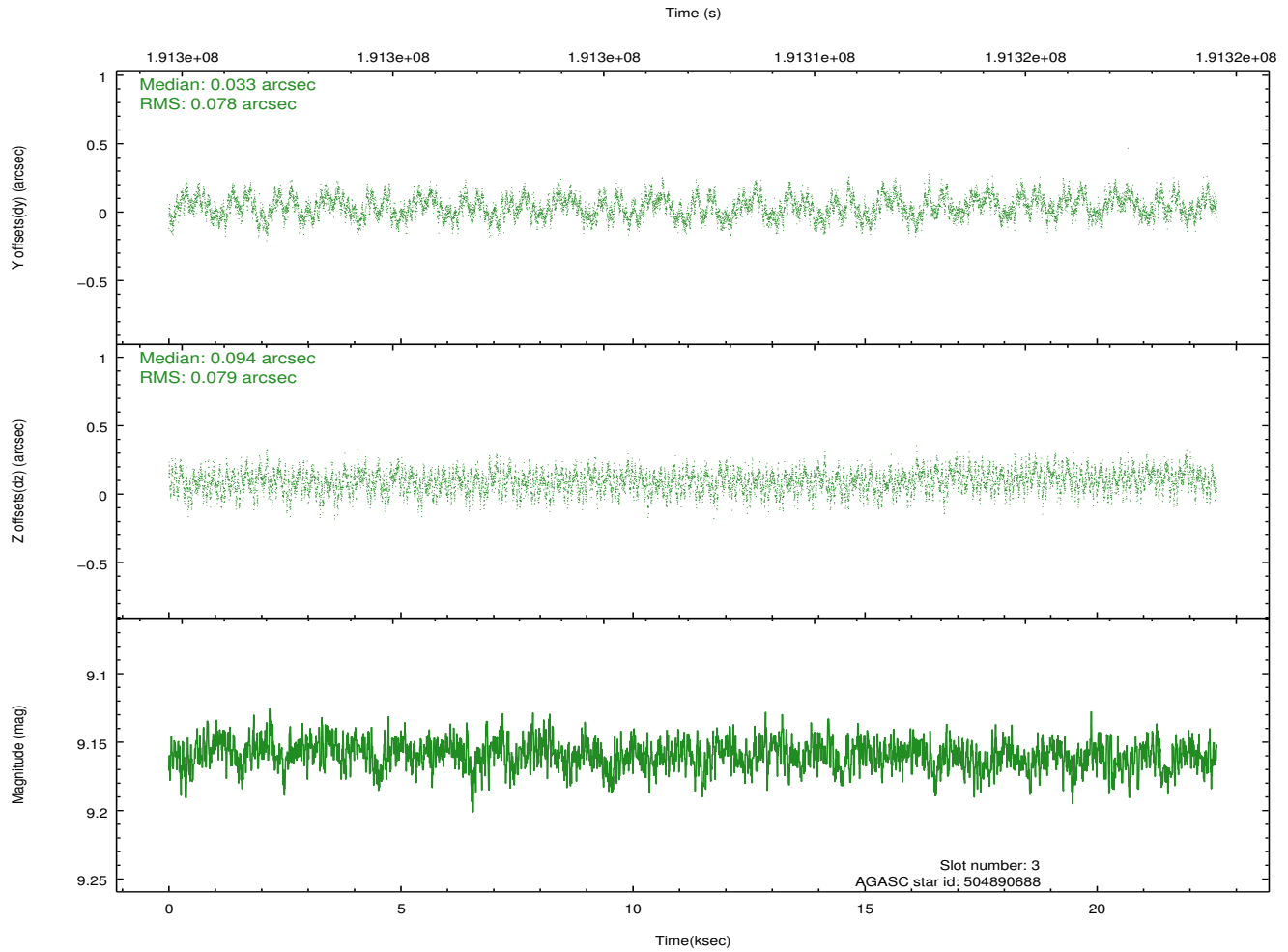
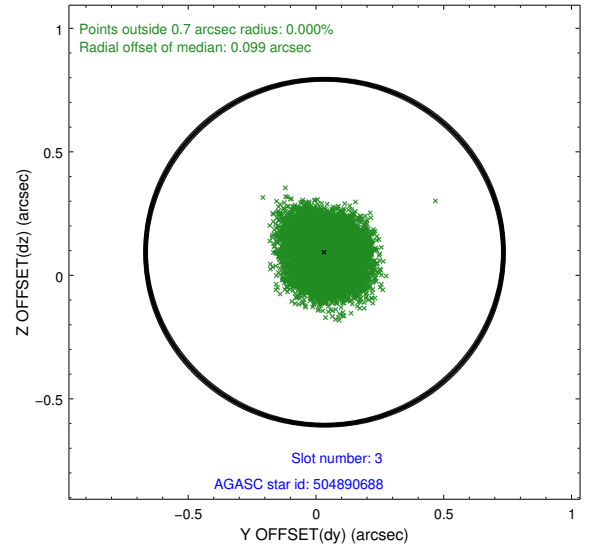
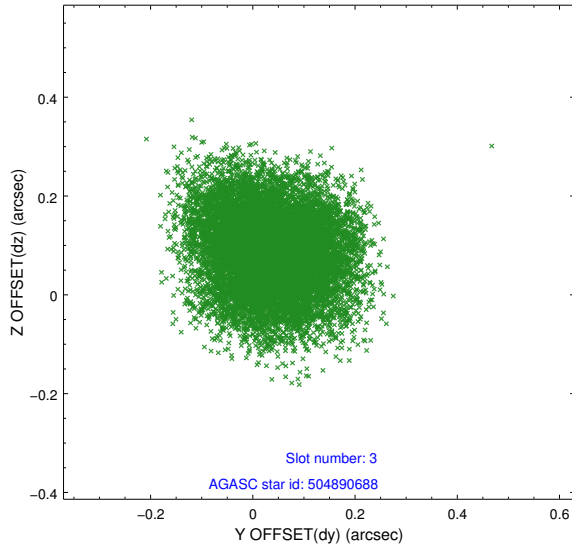


Slot Statistics

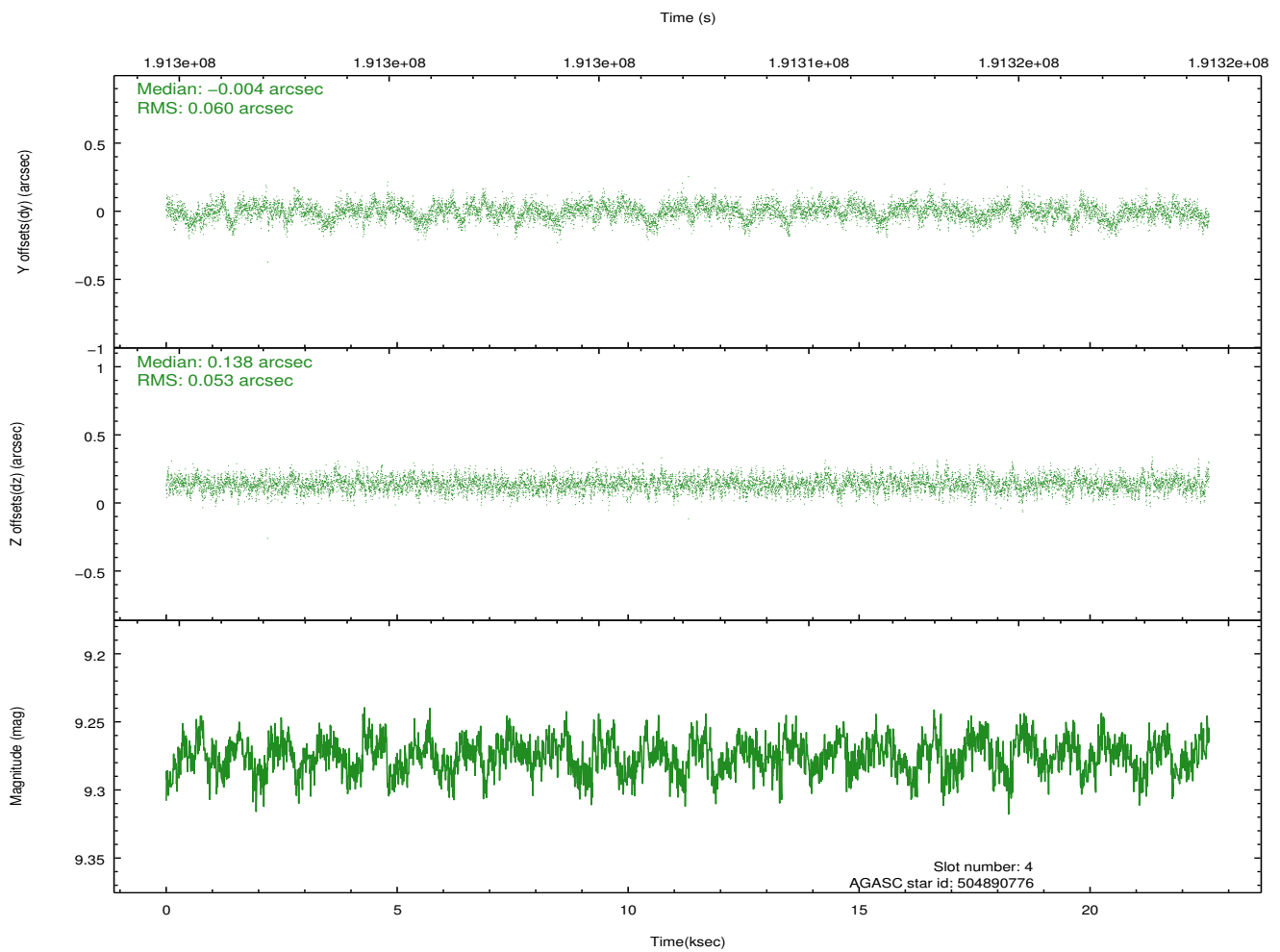
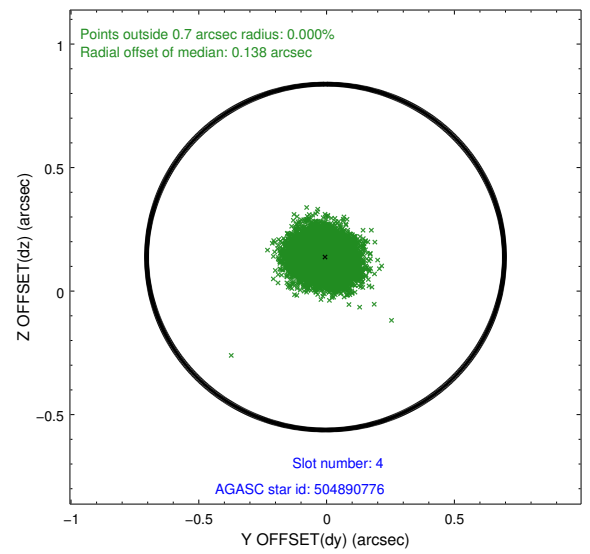
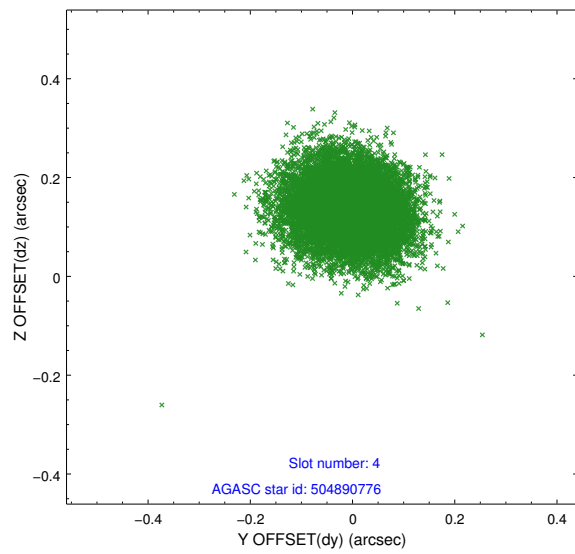
slot	status	id	mag	n_pts	med_dy	med_dz	dr1	dr2	ra	dec	mean_y	mean_z
0	FID	ACIS-S-2	7.10	5507	-0.065	-0.038	0.011	0.029	0.000000	0.000000	-759.33	-1730.49
1	FID	ACIS-S-4	7.20	5507	0.057	0.036	0.010	0.020	0.000000	0.000000	2153.99	177.92
2	FID	ACIS-S-6	7.35	5506	-0.021	0.008	0.009	0.015	0.000000	0.000000	402.87	815.45
3	GUIDE	504890688	9.16	11009	0.033	0.094	0.120	0.185	211.697686	53.837149	-1537.26	-2141.86
4	GUIDE	504890776	9.28	11008	-0.004	0.138	0.085	0.138	211.095934	54.816966	1688.12	-235.04
5	GUIDE	504891480	8.07	11014	0.019	-0.096	0.066	0.100	210.708012	54.666096	1007.68	458.79
6	GUIDE	504894856	8.99	11012	0.055	-0.091	0.090	0.138	209.819510	54.132689	-1205.86	1960.49
7	GUIDE	505292416	9.34	11007	-0.103	-0.040	0.098	0.155	210.920759	55.040479	2412.79	269.31

2.4 Star Slots

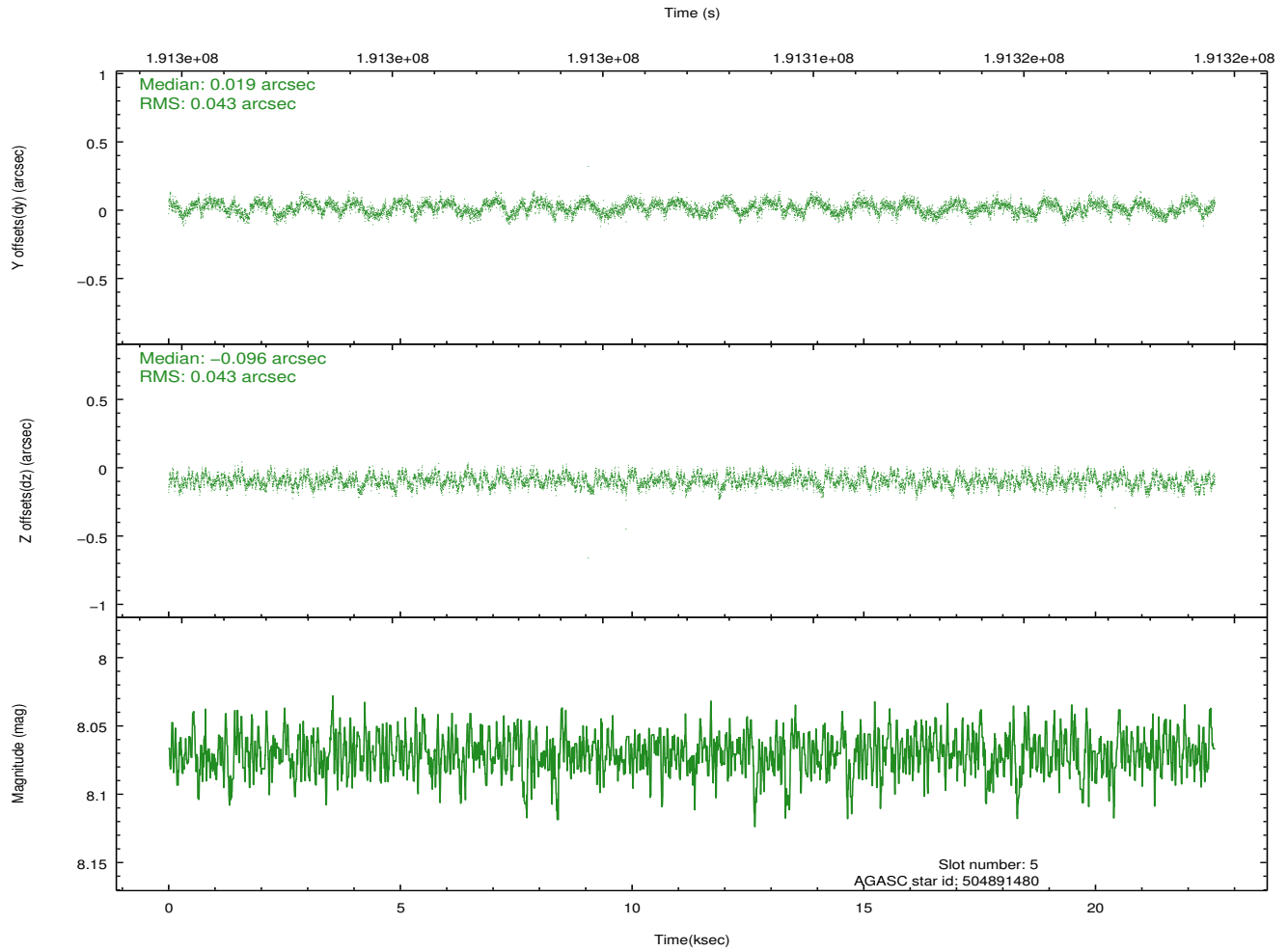
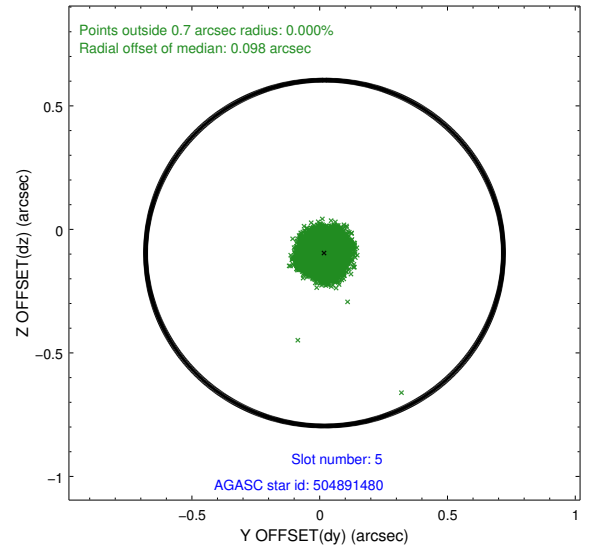
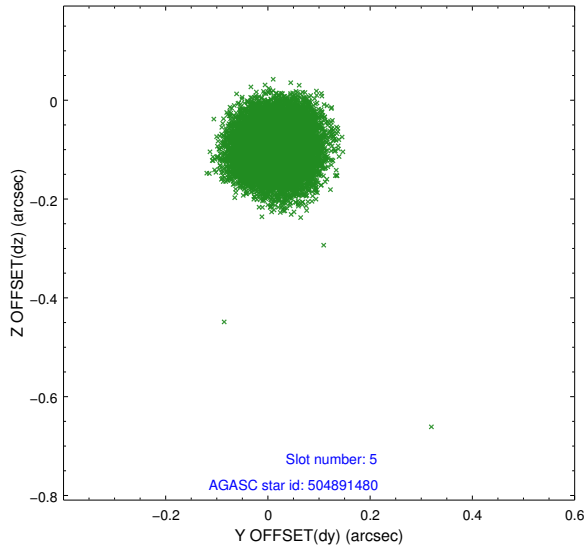
2.4.1 Slot 3



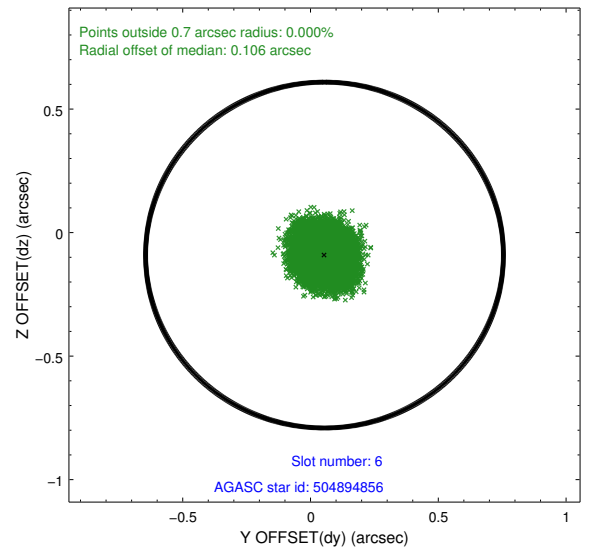
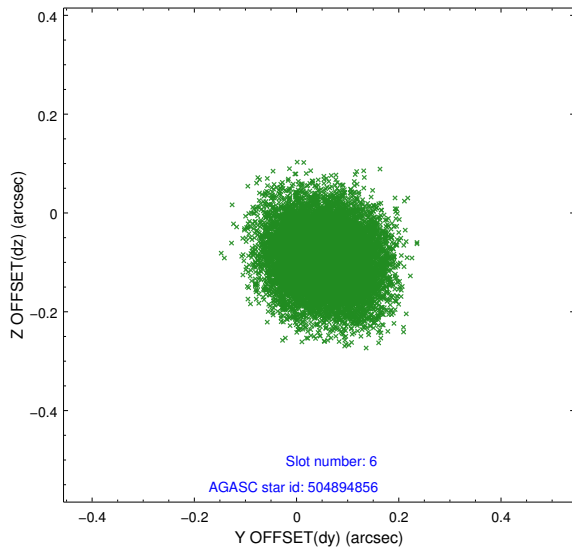
2.4.2 Slot 4



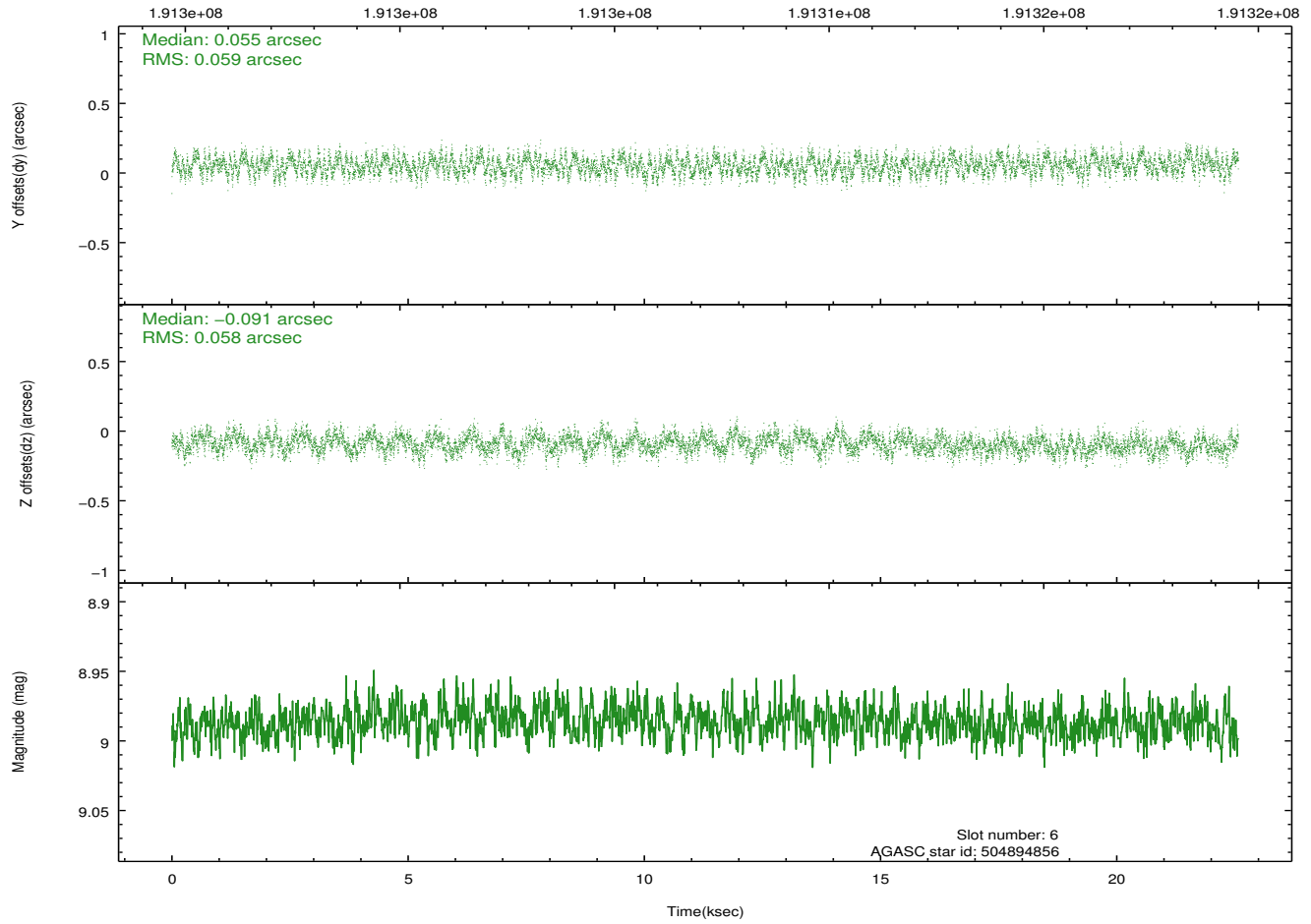
2.4.3 Slot 5



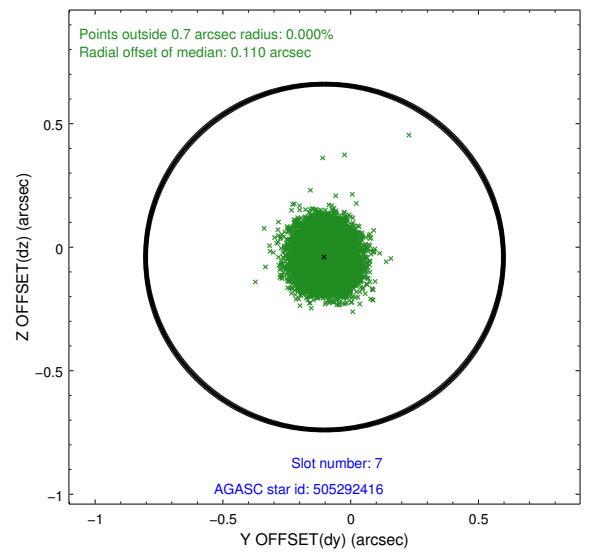
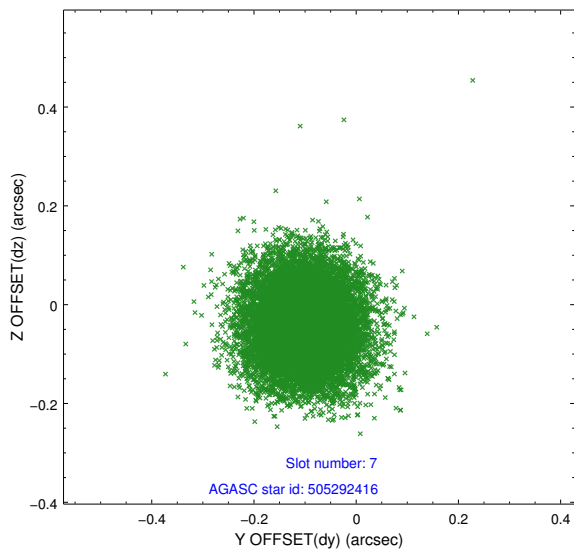
2.4.4 Slot 6



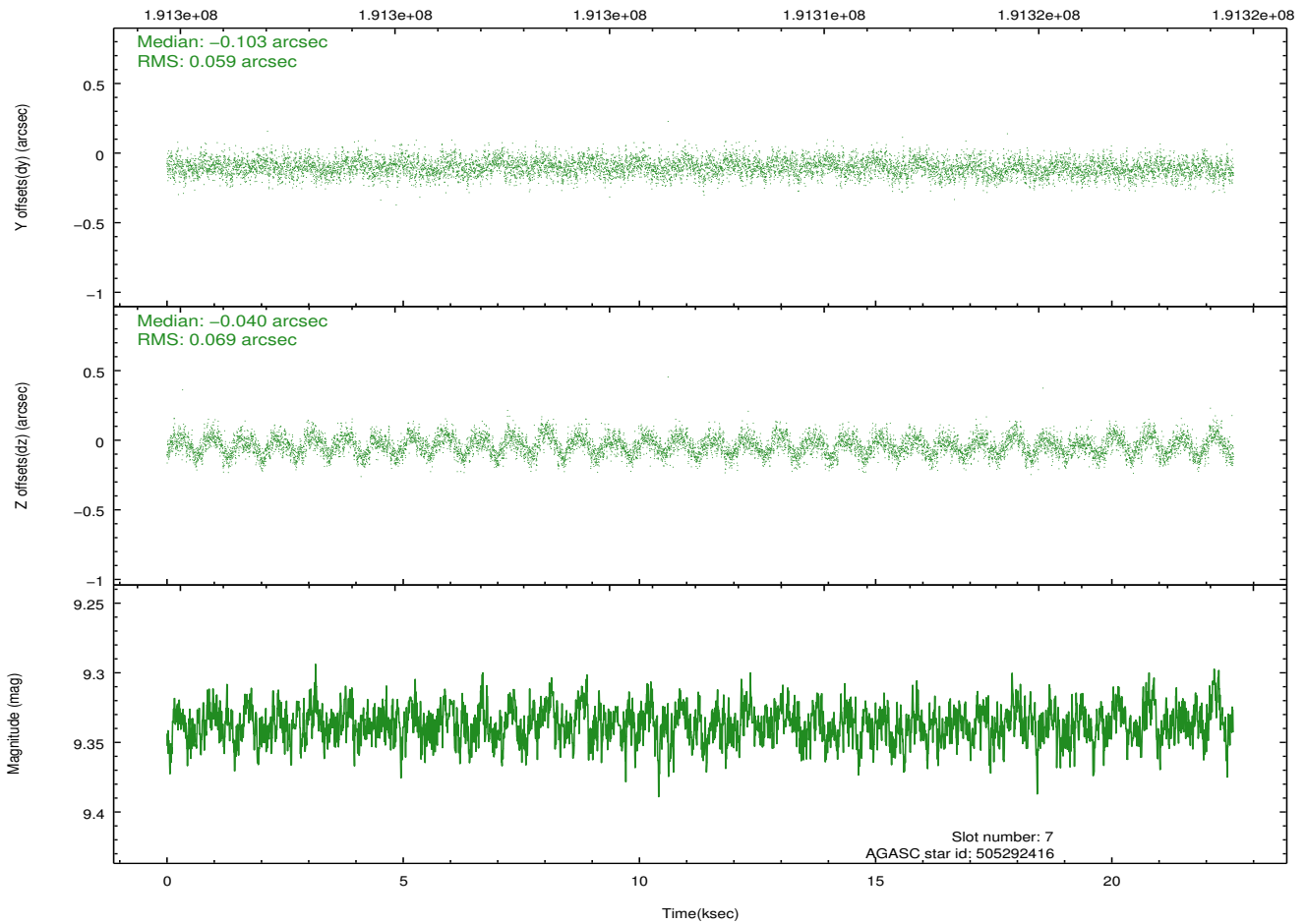
Time (s)



2.4.5 Slot 7

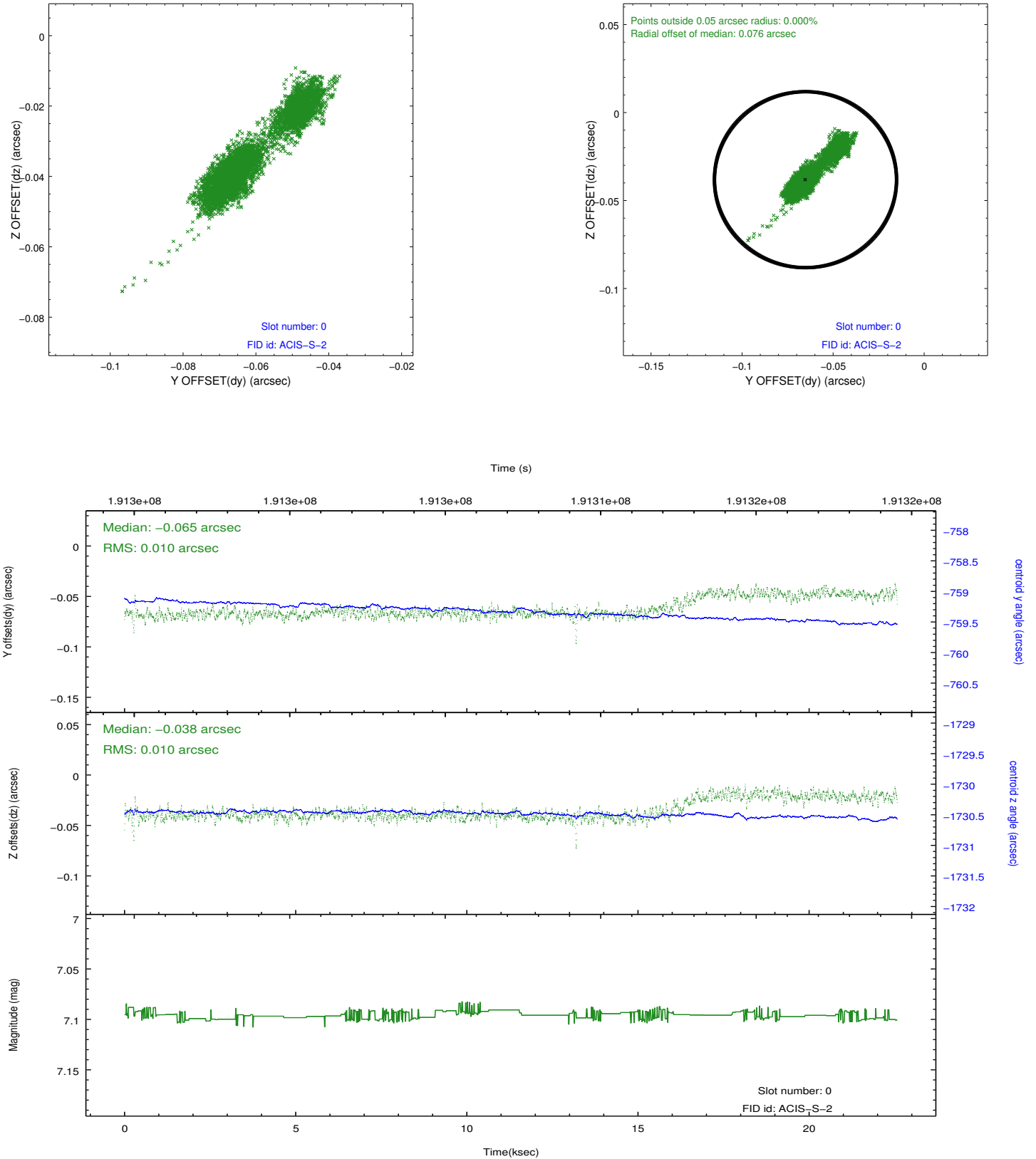


Time (s)

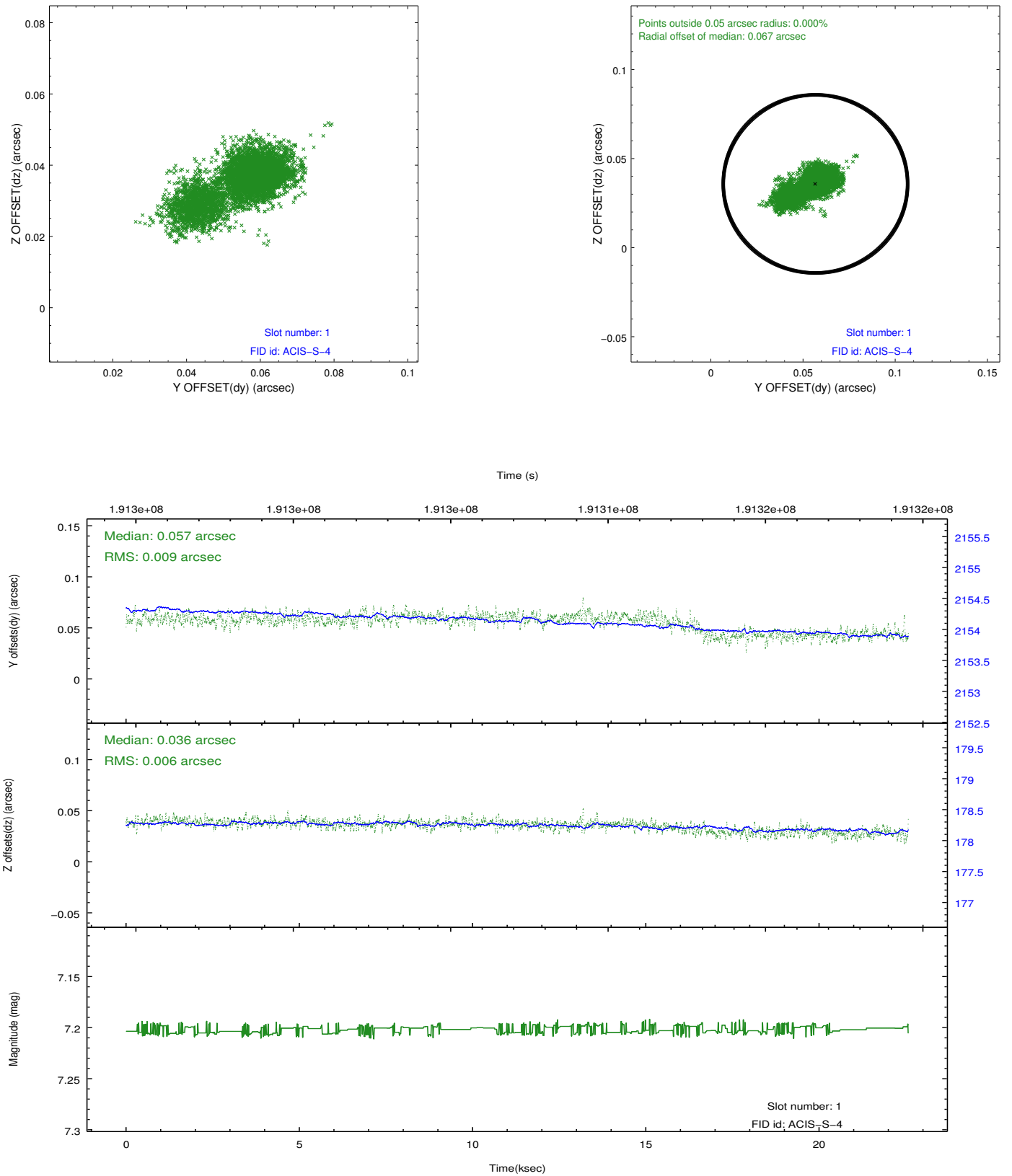


2.5 FID Slots

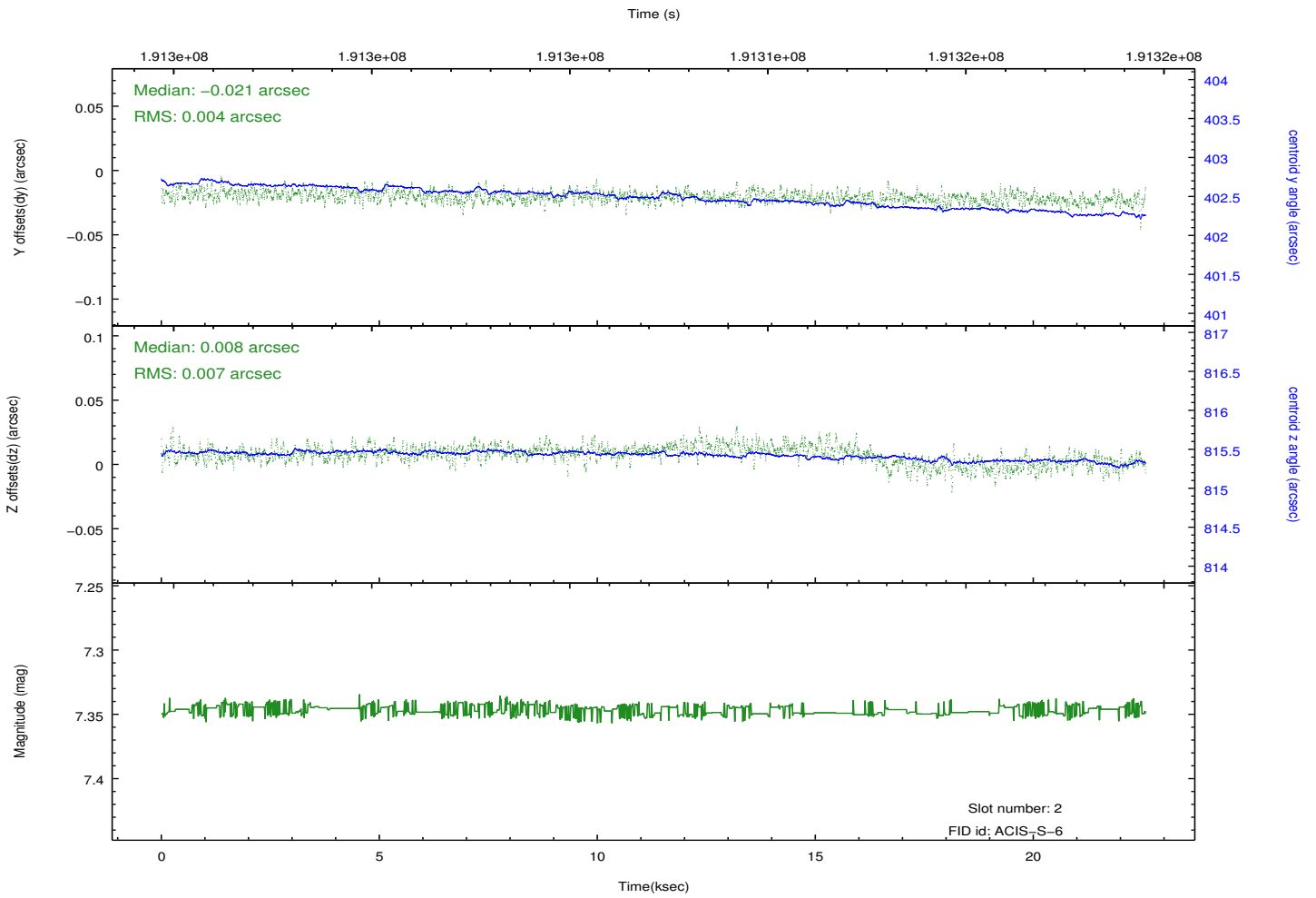
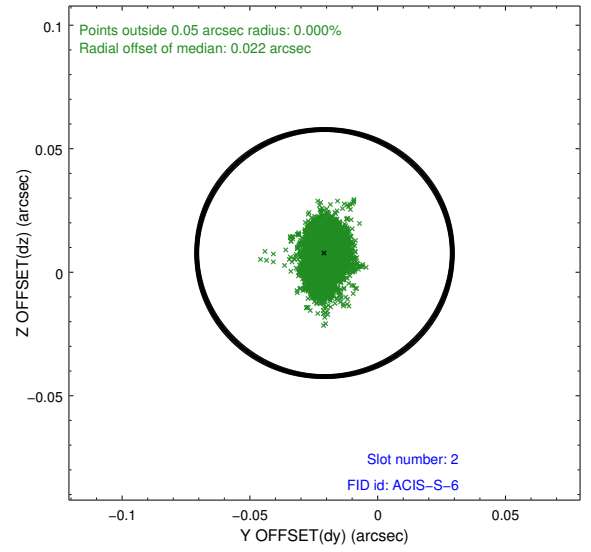
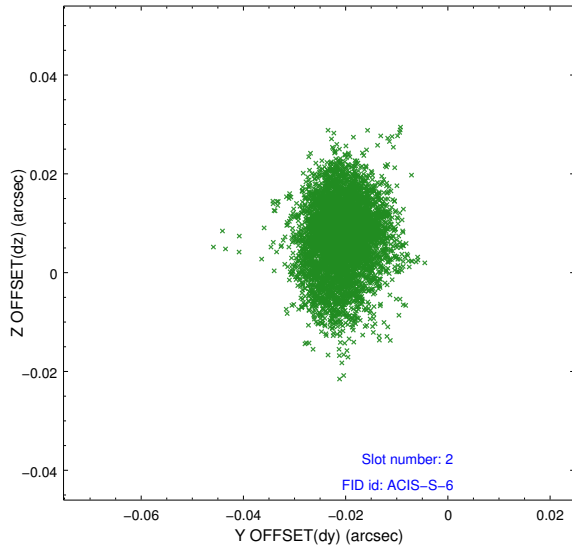
2.5.1 Slot 0



2.5.2 Slot 1



2.5.3 Slot 2



A Summary

A.1 Status

V&V Scientist	Jen Lauer
V&V Date (YYYY-MM-DD)	2012.12.04
V&V Edition	1
V&V Disposition and Status	OK
V&V Charge Time	21.964

A.2 Comments