

# V&V Reference Report

## L2 ASCDS Version : 8.4.5

Observation 537 - L2 Version 4  
Chandra X-Ray Center

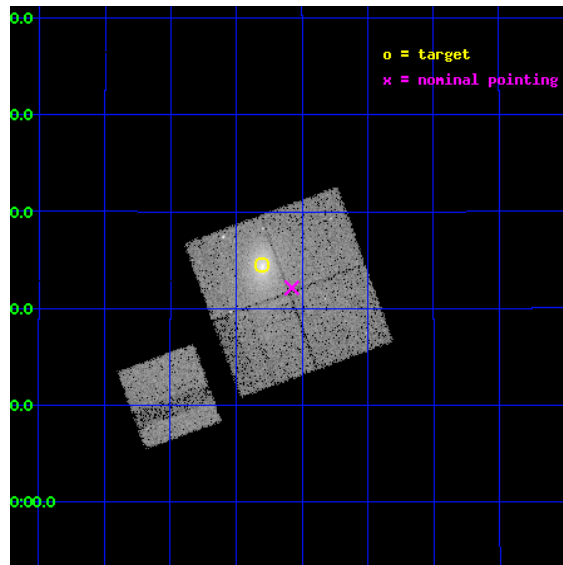
L2 Processing Date : Aug 29 2012

## Contents

<b>1</b>	<b>Front</b>	<b>2</b>
<b>2</b>	<b>OBI</b>	<b>3</b>
2.1	OBI . . . . .	3
2.1.1	Images . . . . .	3
2.1.2	Bias . . . . .	3
2.1.3	Parameters . . . . .	4
2.1.4	Events . . . . .	4
2.2	Compared Parameters . . . . .	5
2.3	Aspect . . . . .	6
2.4	Star Slots . . . . .	9
2.4.1	Slot 3 . . . . .	9
2.4.2	Slot 4 . . . . .	10
2.4.3	Slot 5 . . . . .	11
2.4.4	Slot 6 . . . . .	12
2.4.5	Slot 7 . . . . .	13
2.5	FID Slots . . . . .	14
2.5.1	Slot 0 . . . . .	14
2.5.2	Slot 1 . . . . .	15
2.5.3	Slot 2 . . . . .	16
<b>A</b>	<b>Summary</b>	<b>17</b>
A.1	Status . . . . .	17
A.2	Comments . . . . .	17

# 1 Front

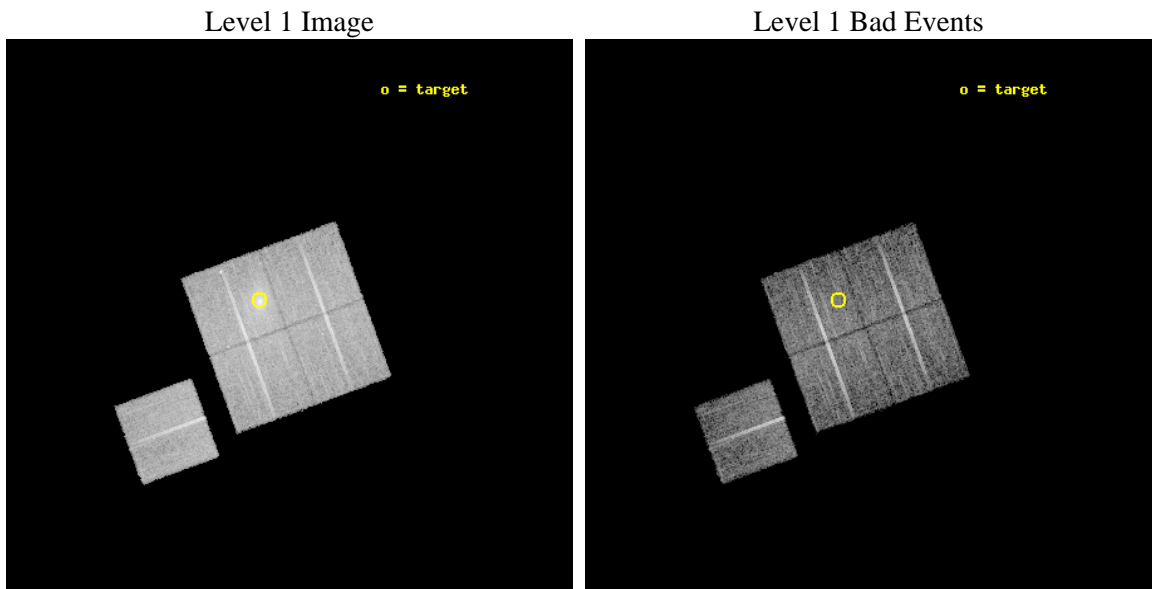
seq_num	800045	Sequence number
obs_id	537	Observation id
title	DETERMINATION OF H0/Q0	Proposal title
observer	DR. LEON VANSPEYBROECK	Principal investigator
object	A1413	Source name
dtcycle	0	&#160
cycle	P	events from which exps? Prim/Second/Both
ra_targ	178.825833	Observer's specified target RA [deg]
dec_targ	23.408	Observer's specified target Dec [deg]
ra_nom	178.76920120815	Nominal RA [deg]
dec_nom	23.369097118465	Nominal Dec [deg]
roll_nom	249.92802322346	Nominal Roll [deg]
revision	4	Processing version of data
ontime	9680.0000090003	Sum of GTIs [s]
livetime	9557.4260202901	Livetime [s]
ontime0	9680.0000090003	Sum of GTIs [s]
ontime1	9676.7590288371	Sum of GTIs [s]
ontime2	9676.7590487748	Sum of GTIs [s]
ontime3	9680.0000090003	Sum of GTIs [s]
ontime6	9670.2771582156	Sum of GTIs [s]
l2events	85005	Number of level 2 events



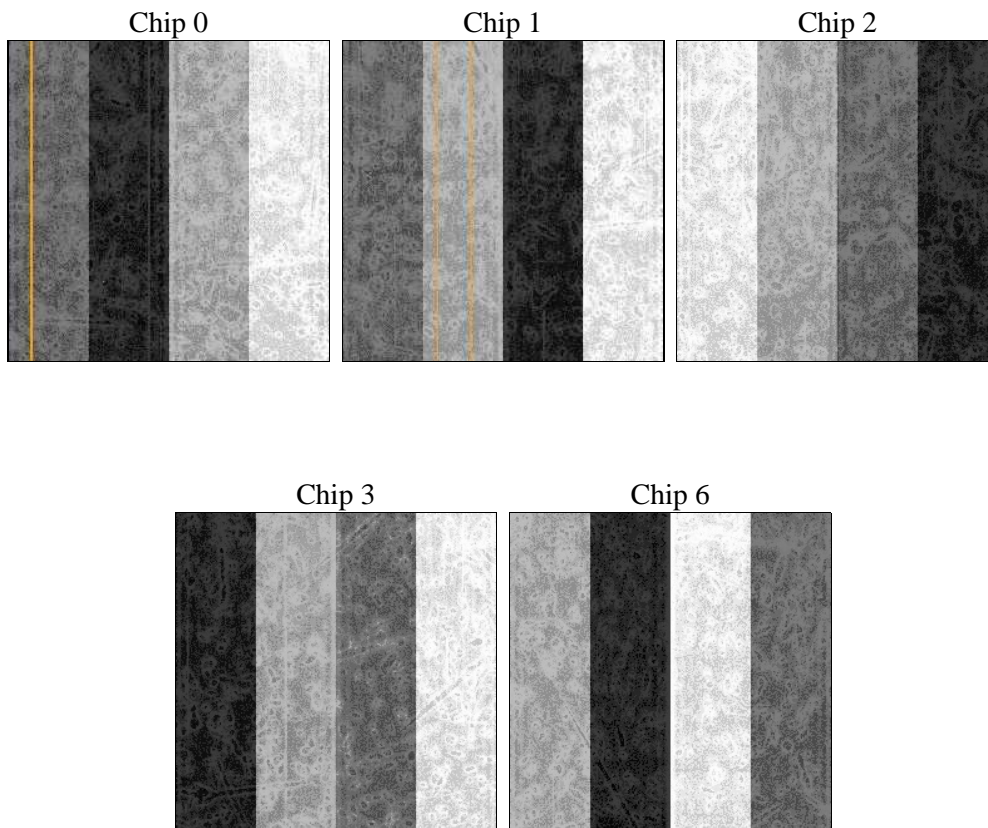
## 2 OBI

### 2.1 OBI

#### 2.1.1 Images



#### 2.1.2 Bias



### 2.1.3 Parameters

obi_num	0	Obi number	sched_exp_time	9550.000000	[s] Scheduled observation exposure time
ascdsver	8.4.5	Processing system revision	ontime	9680.000090003	Sum of GTIs [s]
caldsver	4.5.1.1	&#160	ontime0	9680.000090003	Sum of GTIs [s]
date	2012-08-29T16:15:08	Date and time of file creation	ontime1	9676.7590288371	Sum of GTIs [s]
revision	4	Processing version of data	ontime2	9676.7590487748	Sum of GTIs [s]
			ontime3	9680.000090003	Sum of GTIs [s]
			ontime6	9670.2771582156	Sum of GTIs [s]
			l1events	392899	Number of level 1 events

### 2.1.4 Events

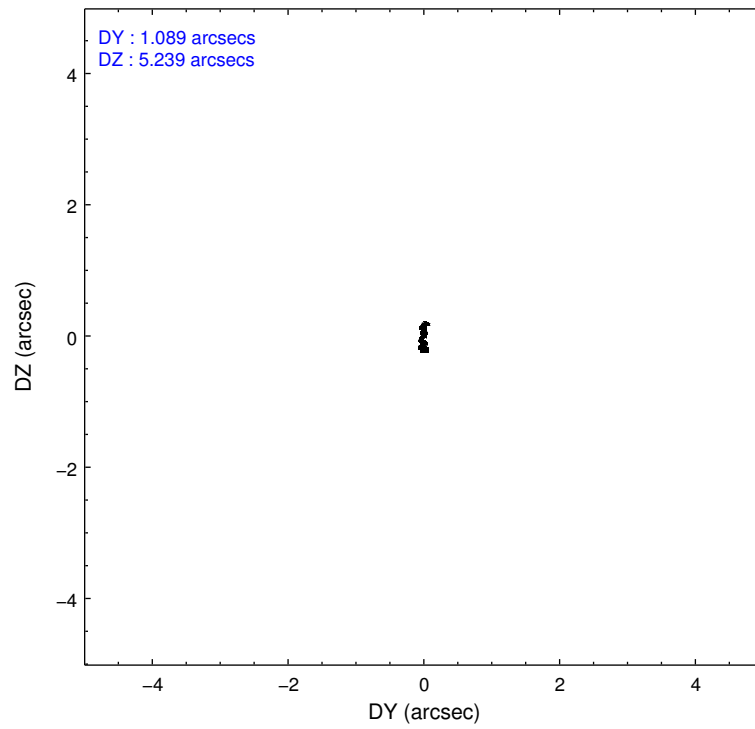
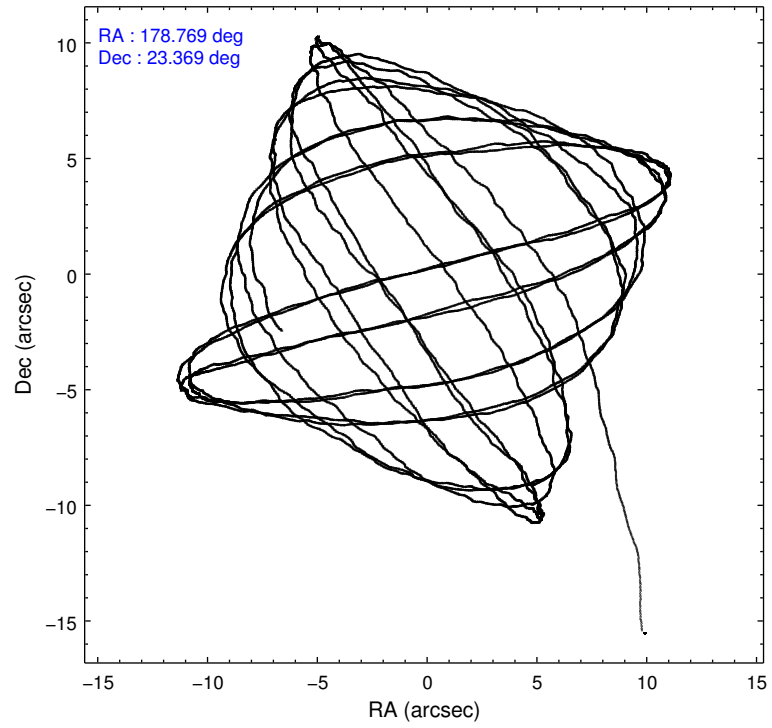
	ccd 0	ccd 1	ccd 2	ccd 3	ccd 6
level 1 events	70933	72369	77737	97101	74759
rejected events	56268	55573	63181	63781	60361
rejected %	79%	76%	81%	65%	80%

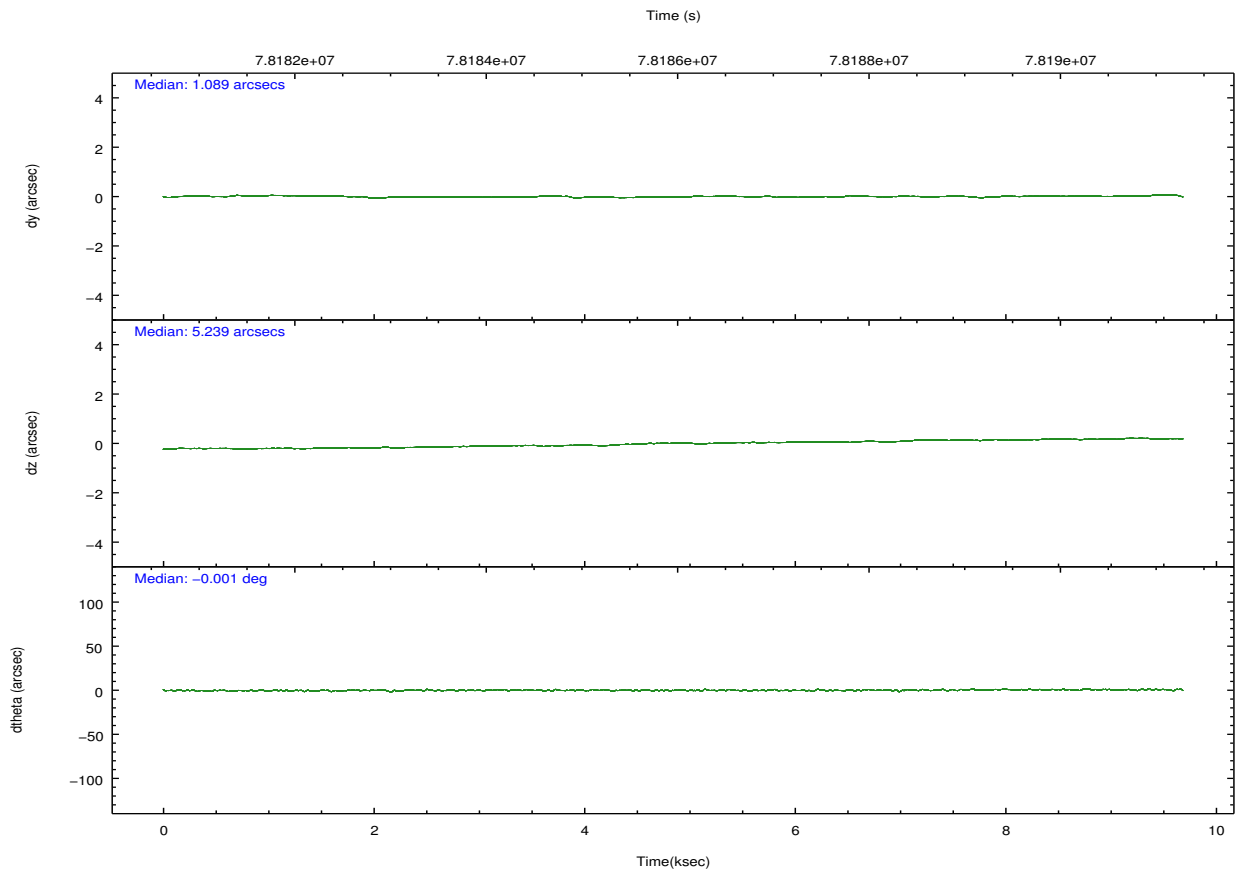
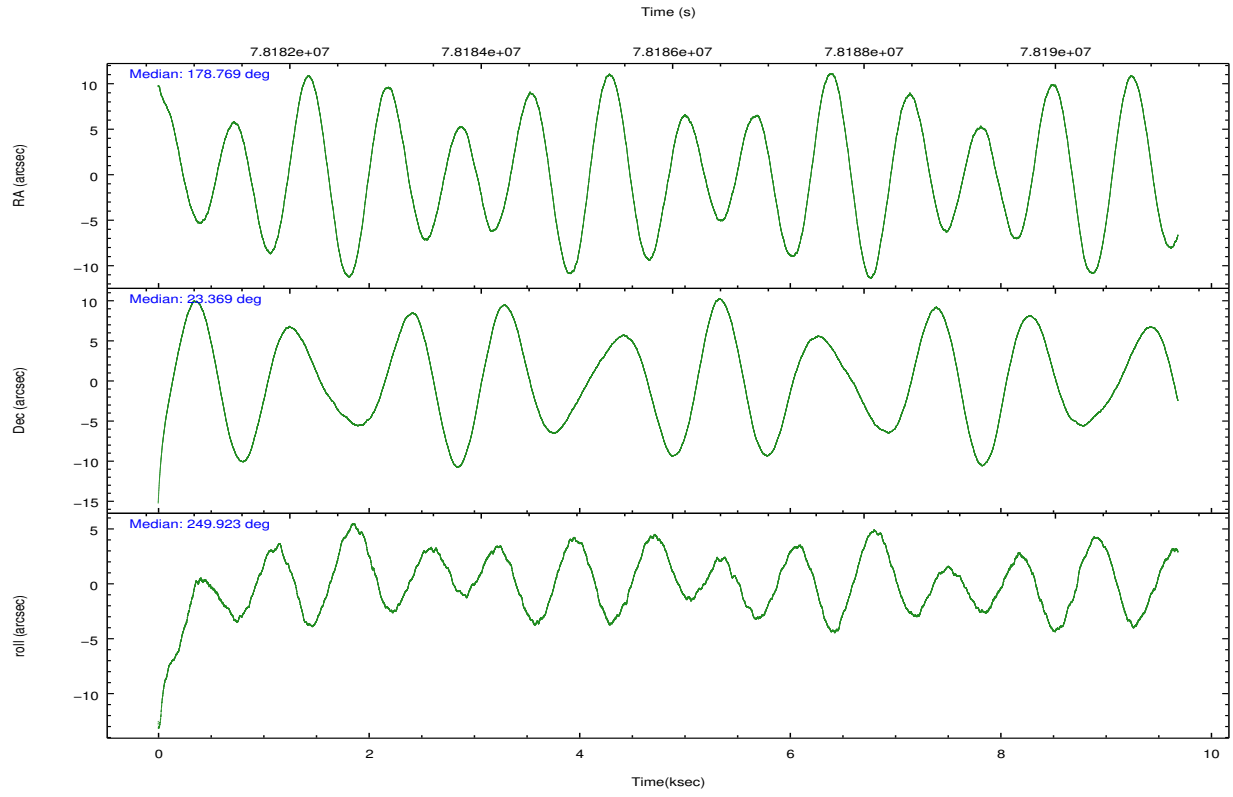
	ccd 0	ccd 1	ccd 2	ccd 3	ccd 6
grade 0 events	7188	8538	7703	22674	7110
	10%	11%	9%	23%	9%
grade 1 events	52	42	49	108	40
	0%	0%	0%	0%	0%
grade 2 events	3970	4476	3438	6036	3823
	5%	6%	4%	6%	5%
grade 3 events	887	976	794	1312	827
	1%	1%	1%	1%	1%
grade 4 events	943	1048	925	1457	892
	1%	1%	1%	1%	1%
grade 5 events	2085	2290	2060	2342	2554
	2%	3%	2%	2%	3%
grade 6 events	2406	2532	2423	2900	2461
	3%	3%	3%	2%	3%
grade 7 events	53402	52467	60345	60272	57052
	75%	72%	77%	62%	76%

## 2.2 Compared Parameters

Parameter	Planned	Actual	Parameter	Planned	Actual
Instrument	ACIS	ACIS	Obspar format version number	7	7
Detector	ACIS-01236	ACIS-01236	Obspar file type	PREDICTED	ACTUAL
Grating	NONE	NONE	Obspar update status	NONE	UPDATED
Data mode	VFAINT	VFAINT	Number of optional ACIS chips dropped	0	0
Observation mode	POINTING	POINTING	On-chip summing requested	N	N
[deg] Pointing RA	178.764166	178.7692012081519	Subarray requested	NONE	NONE
[deg] Pointing Dec	23.396223	23.36909711846489	Alternating exposures requested	N	N
[deg] Pointing Roll	249.721346	249.9280232234562	[s] Primary exposure time	0.000000	3.2
[mm] SIM focus pos	-0.782348	-0.7809083437167272			
[mm] SIM defocus	0	0.001439871863259334			
[mm] SIM translation stage pos	-236.532463	-236.5241547330508			
[mm] SIM translation stage offset	2.94	2.931701730121091			
[s] Observation start time (MET)	78181243.184000	78180053.15451001			
Observation start date	2000-06-23T20:59:39	2000-06-23T20:40:53			
[s] Observation end time (MET)	78190793.184000	78191274.85492399			
Observation end date	2000-06-23T23:38:49	2000-06-23T23:47:54			
Read mode	TIMED	TIMED			

## 2.3 Aspect



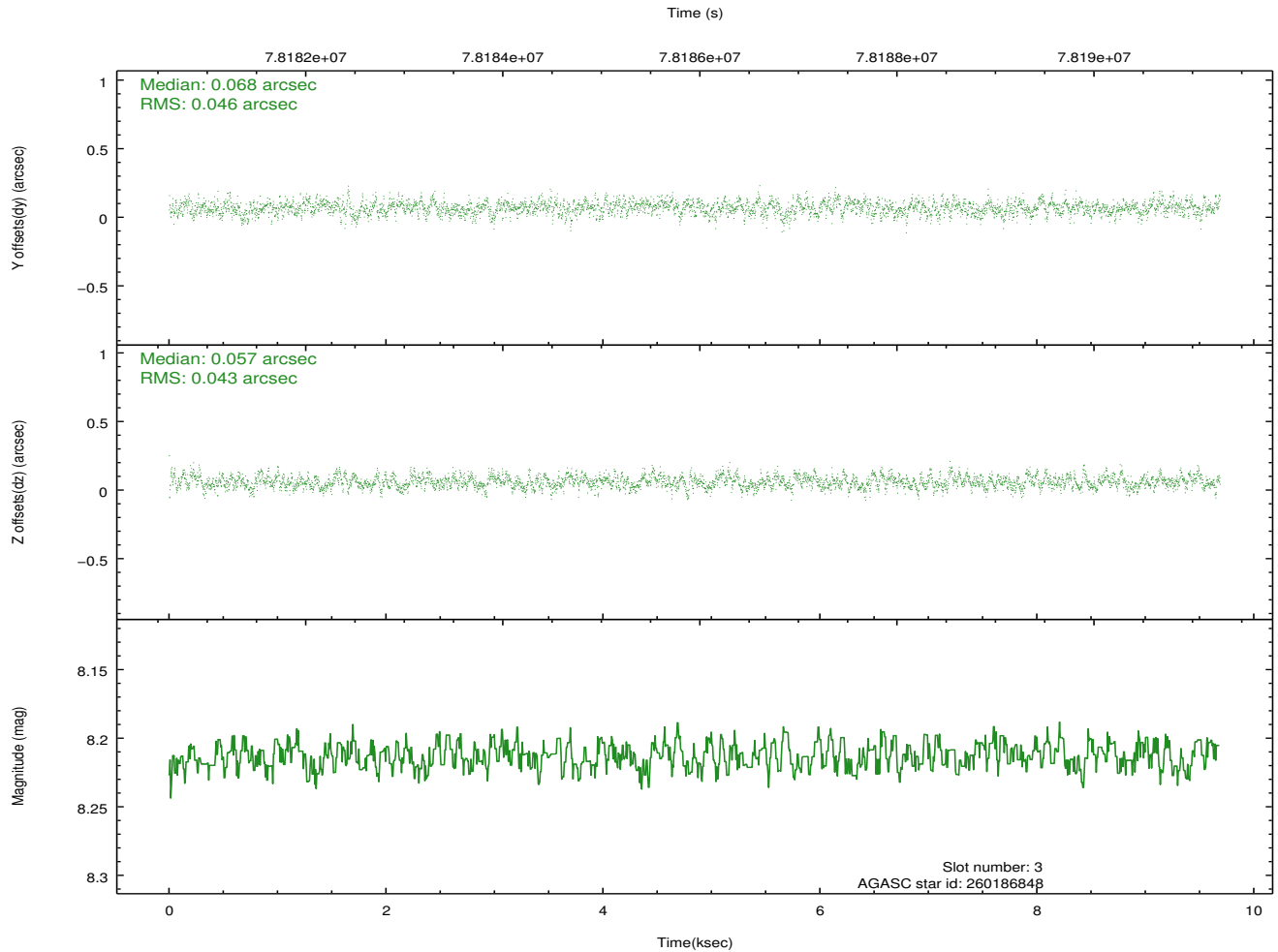
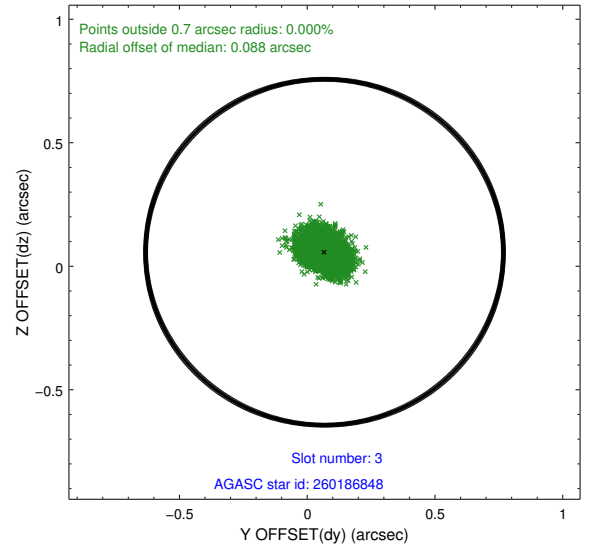
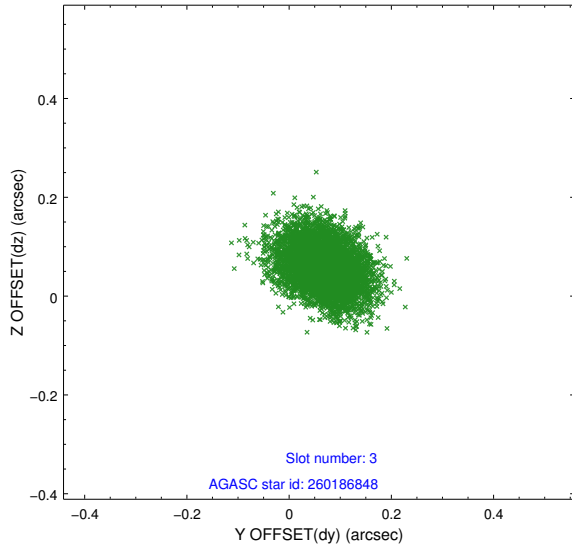


### Slot Statistics

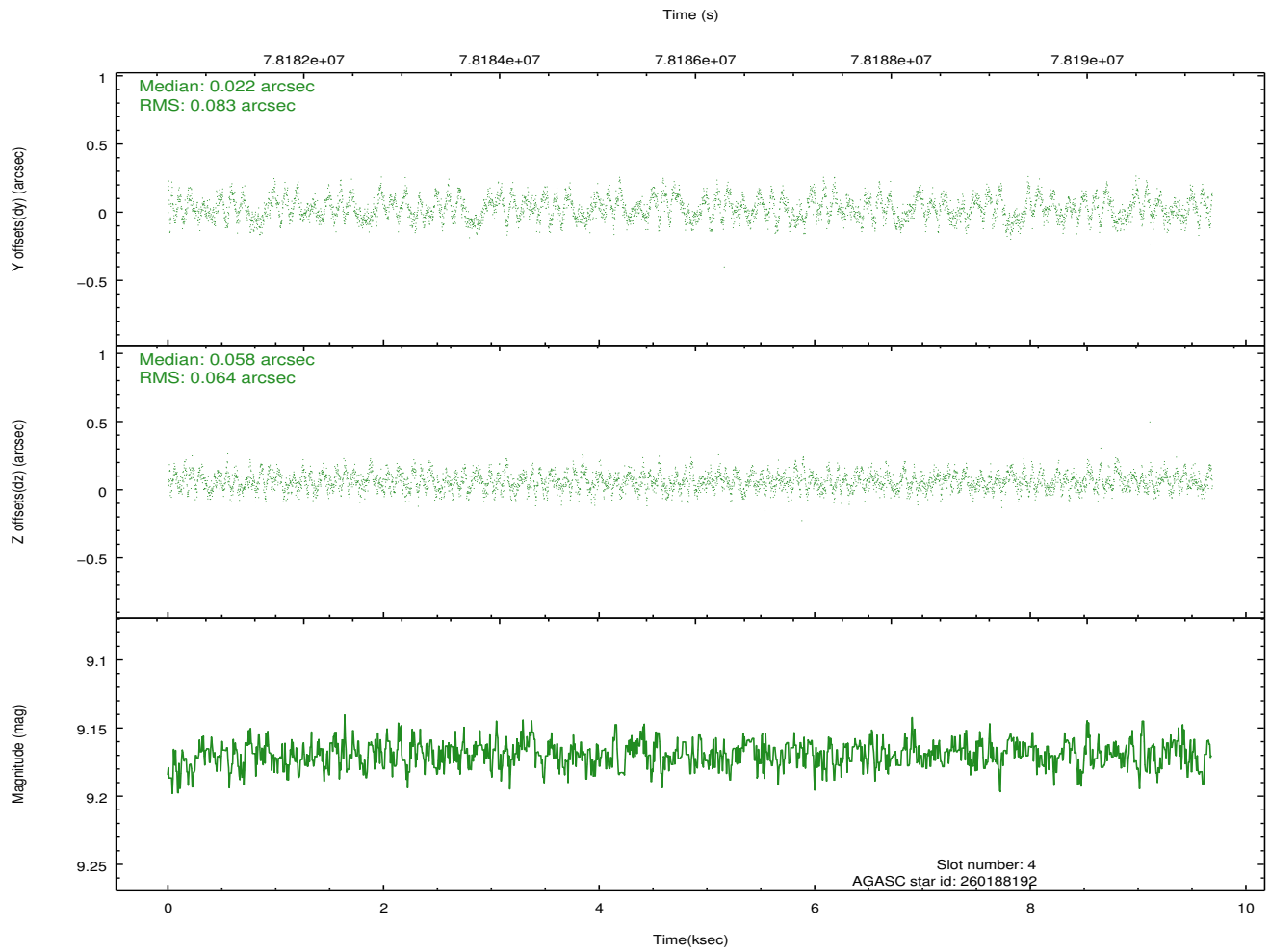
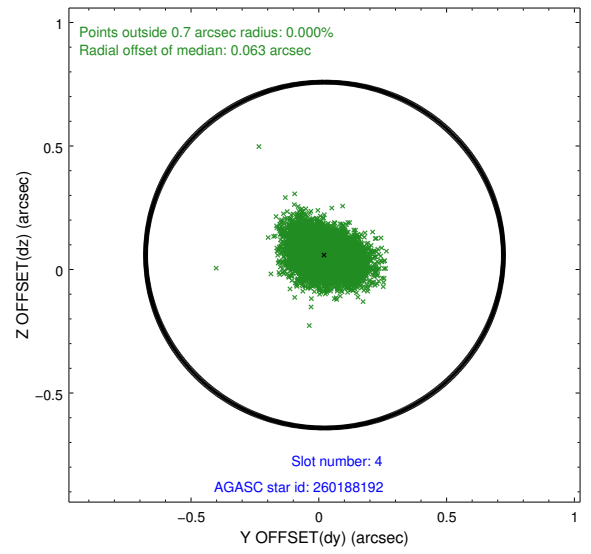
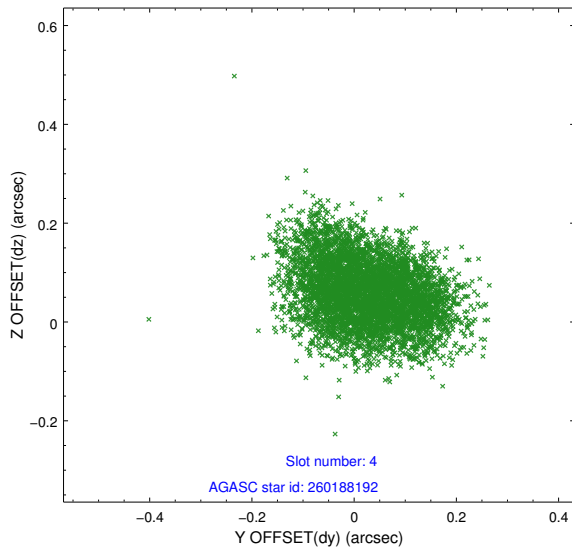
slot	status	id	mag	n_pts	med_dy	med_dz	dr1	dr2	ra	dec	mean_y	mean_z
0	FID	ACIS-I-1	7.25	2362	-0.079	0.123	0.008	0.013	0.000000	0.000000	938.72	-768.13
1	FID	ACIS-I-4	7.21	2362	0.004	-0.024	0.007	0.012	0.000000	0.000000	2159.35	1130.89
2	FID	ACIS-I-5	7.23	2363	-0.024	-0.028	0.006	0.012	0.000000	0.000000	-1808.48	1129.80
3	GUIDE	260186848	8.21	4725	0.068	0.057	0.067	0.109	178.929956	22.642824	2352.24	1457.88
4	GUIDE	260188192	9.17	4726	0.022	0.058	0.112	0.174	179.330149	22.976535	763.34	2283.38
5	GUIDE	260182304	9.22	4725	-0.165	-0.136	0.078	0.134	178.643100	23.810976	-1263.11	-890.37
6	GUIDE	260188952	9.55	4657	0.136	-0.060	0.097	0.158	178.359974	22.948174	1974.99	-697.83
7	GUIDE	260186296	9.60	4725	-0.058	0.081	0.113	0.183	179.246996	23.604894	-1259.59	1233.49

## 2.4 Star Slots

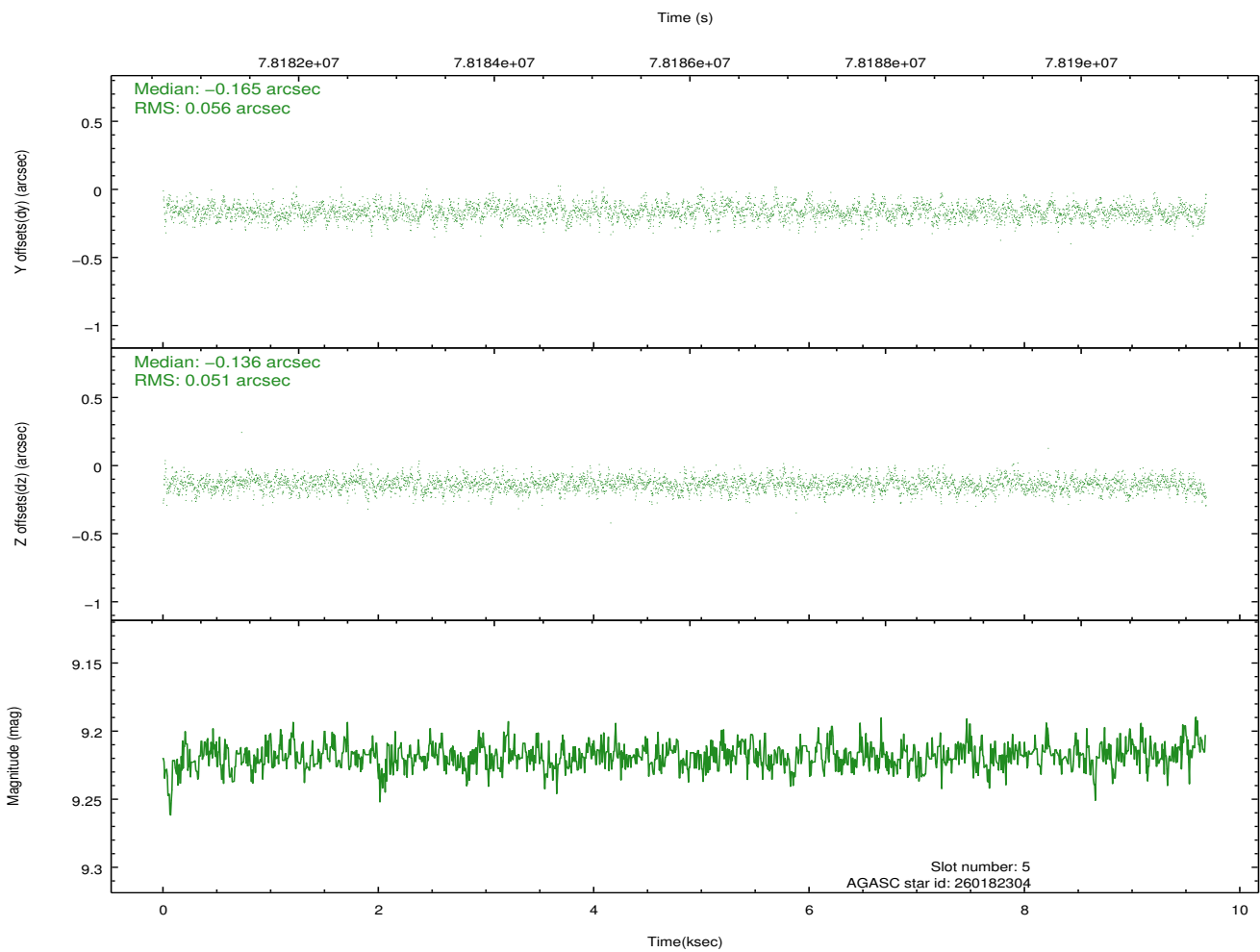
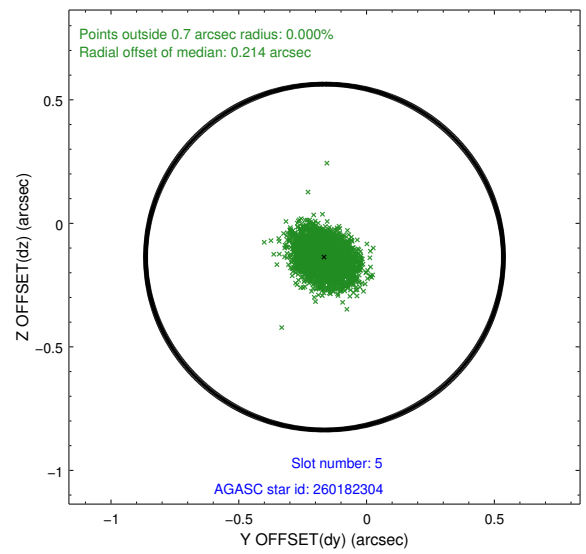
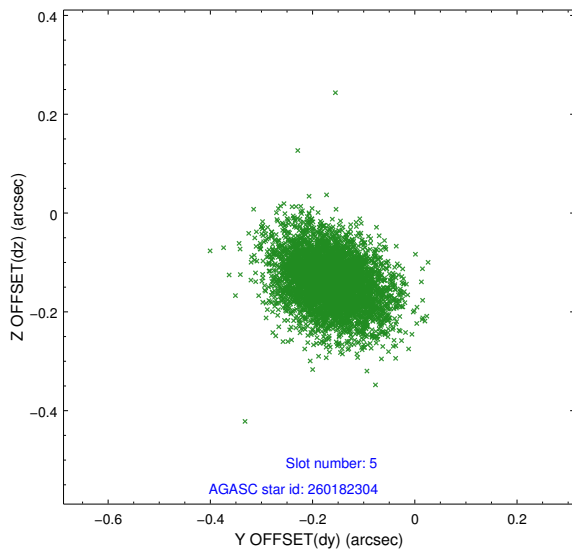
### 2.4.1 Slot 3



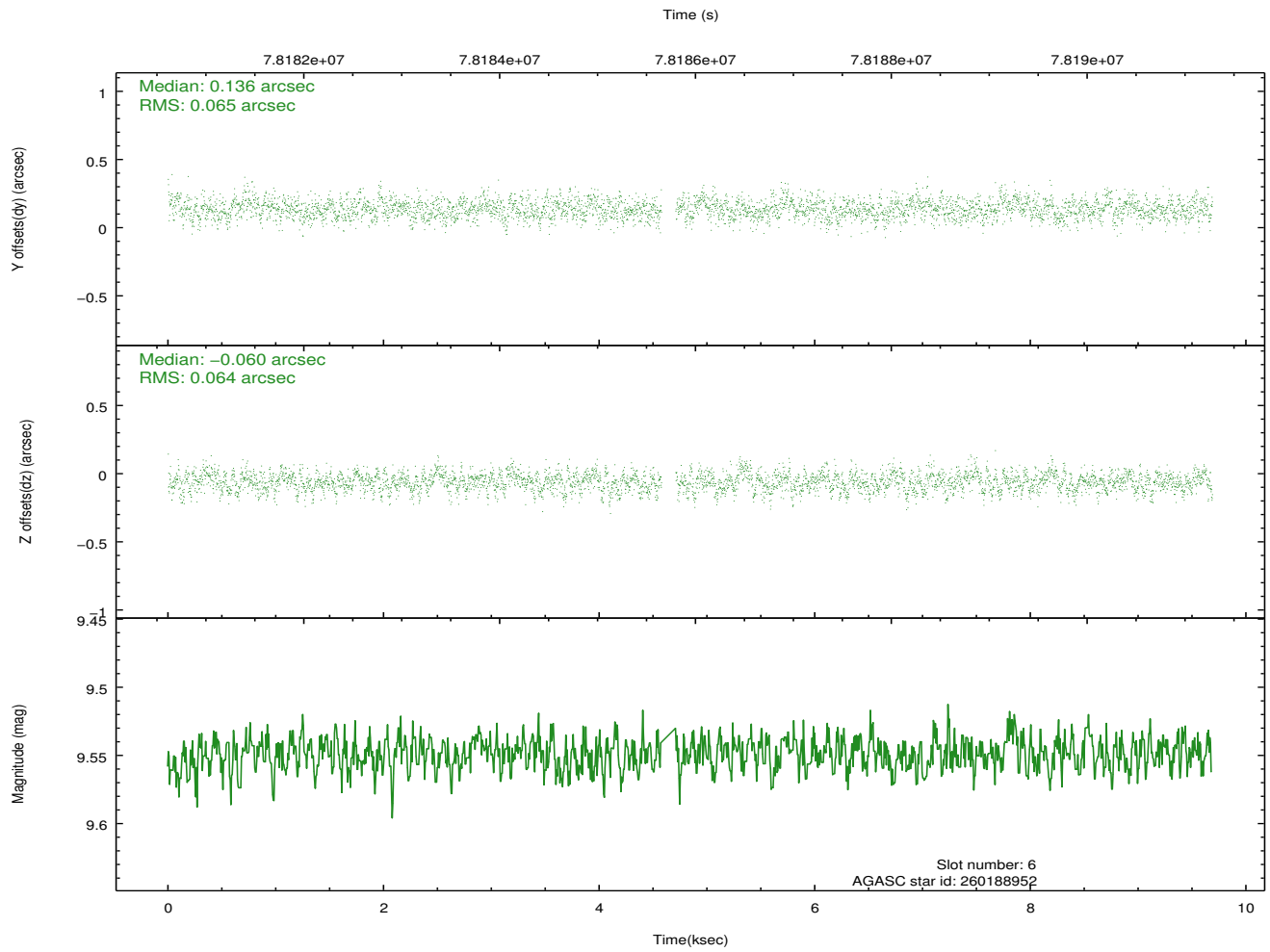
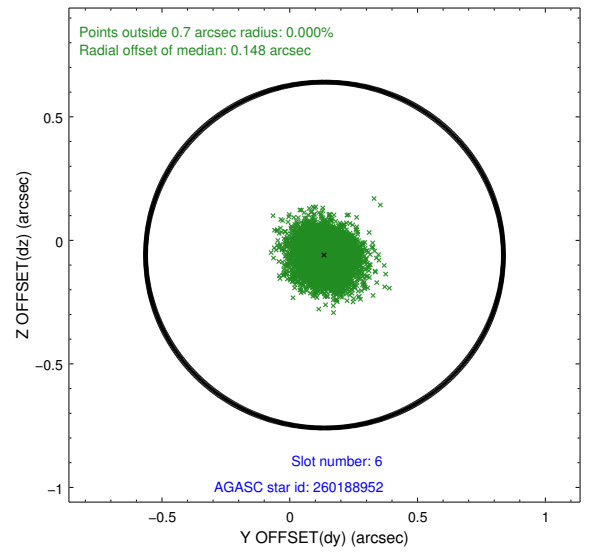
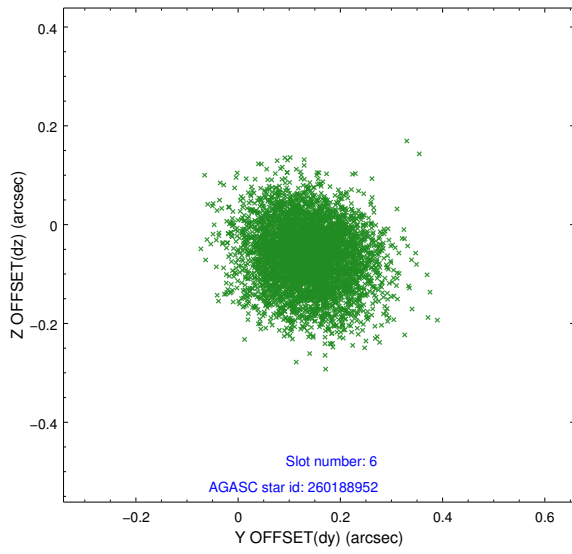
### 2.4.2 Slot 4



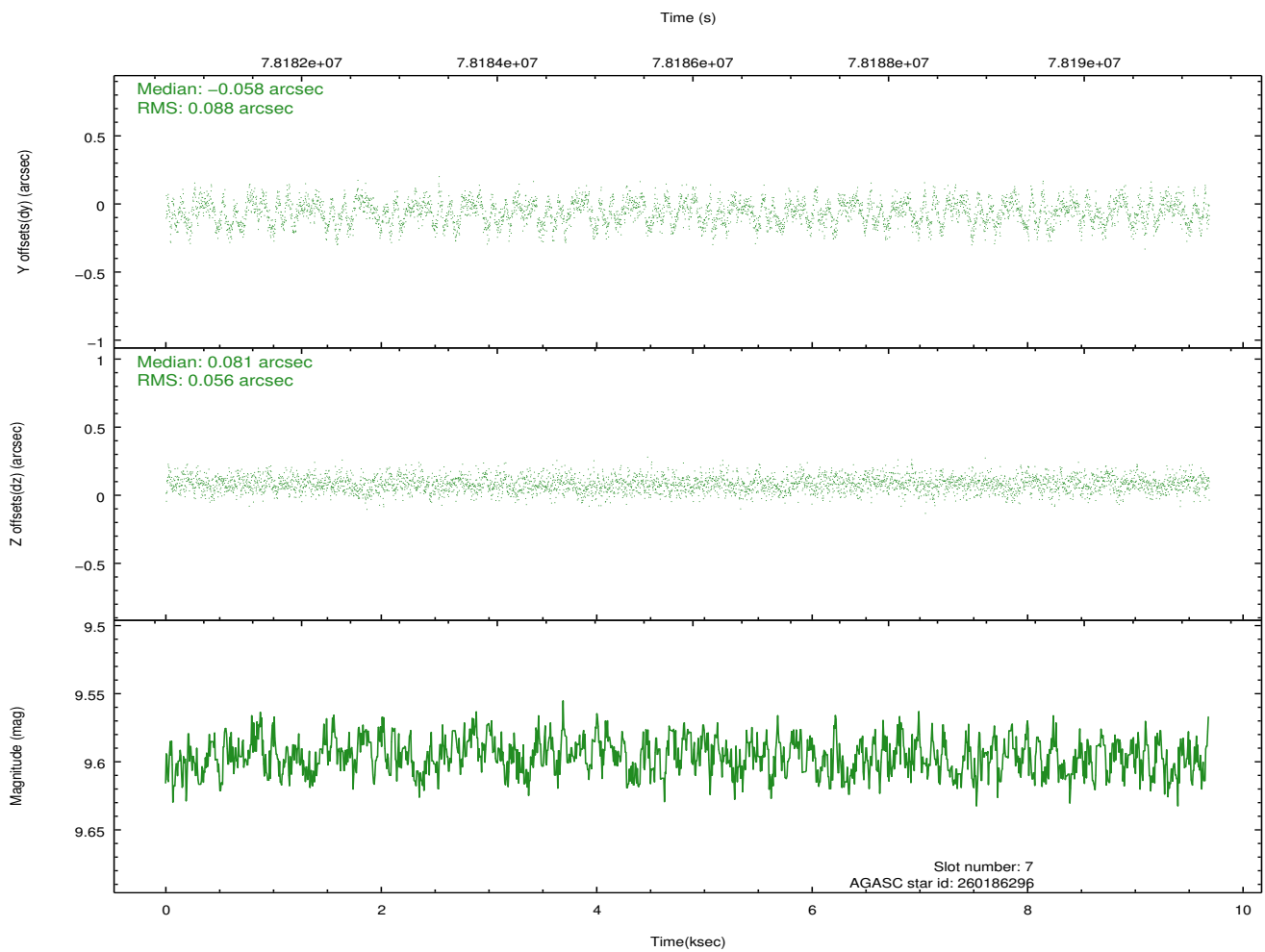
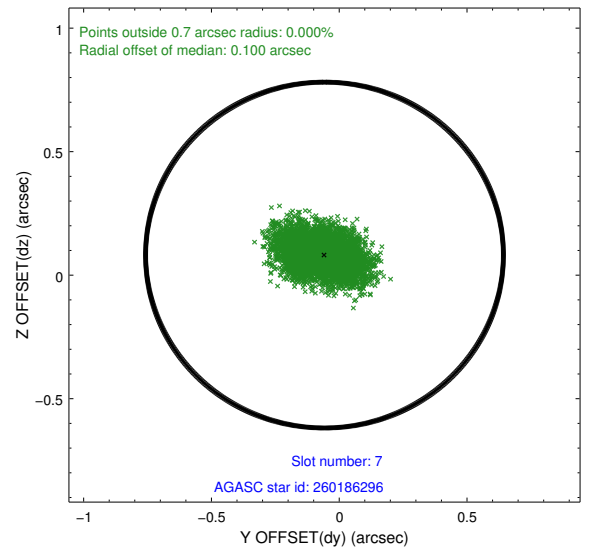
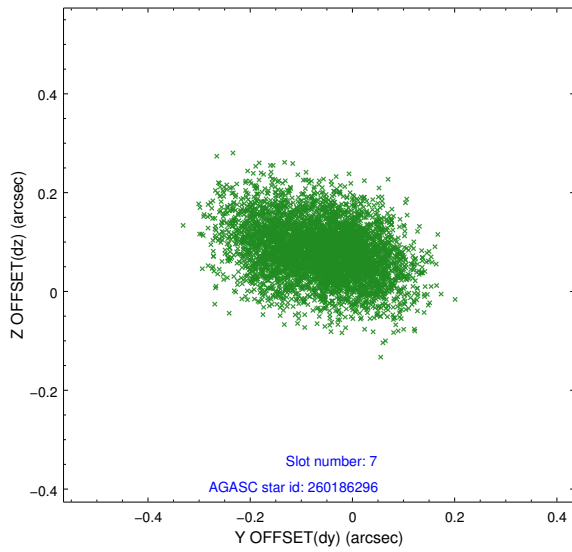
### 2.4.3 Slot 5



### 2.4.4 Slot 6

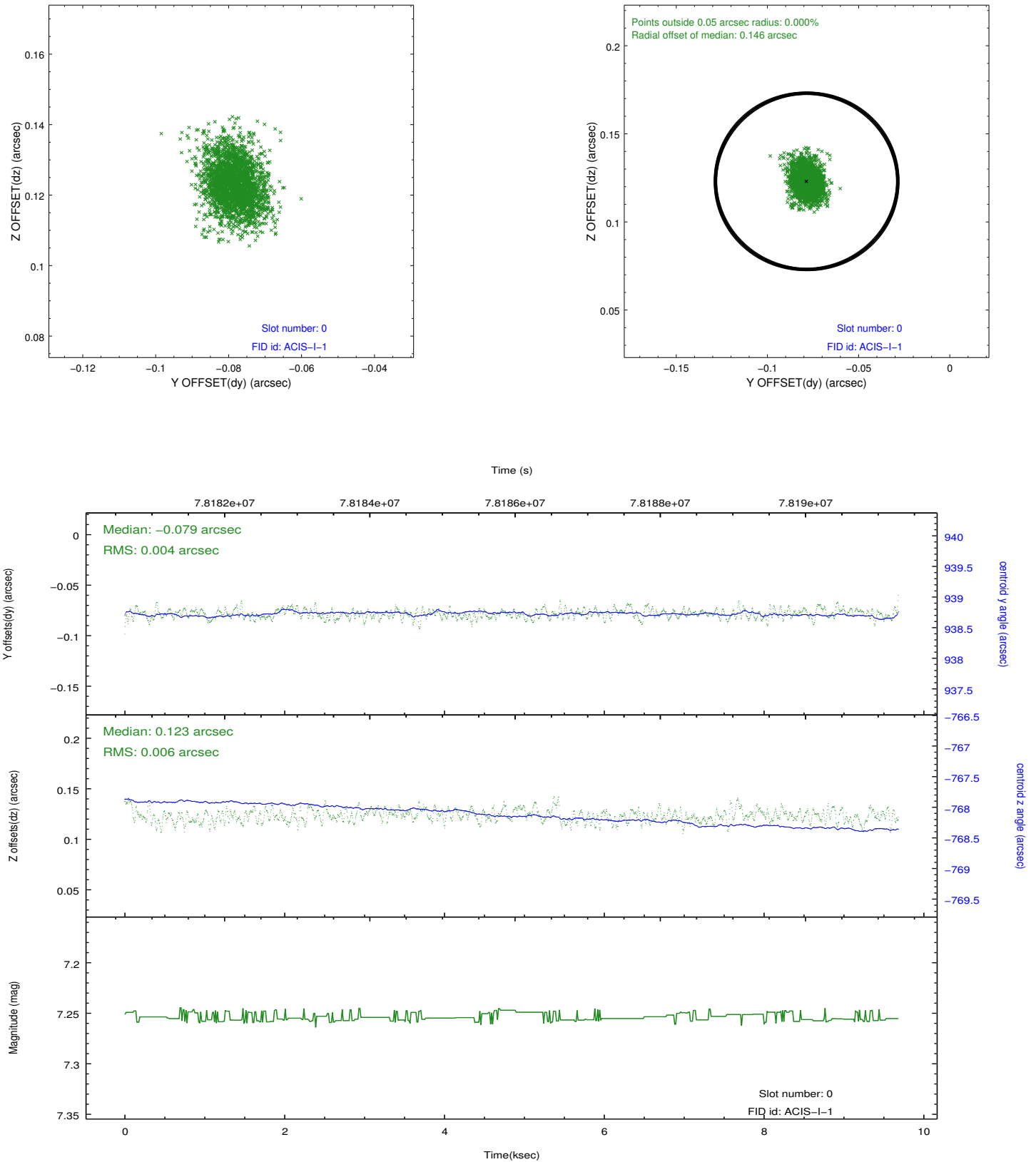


## 2.4.5 Slot 7

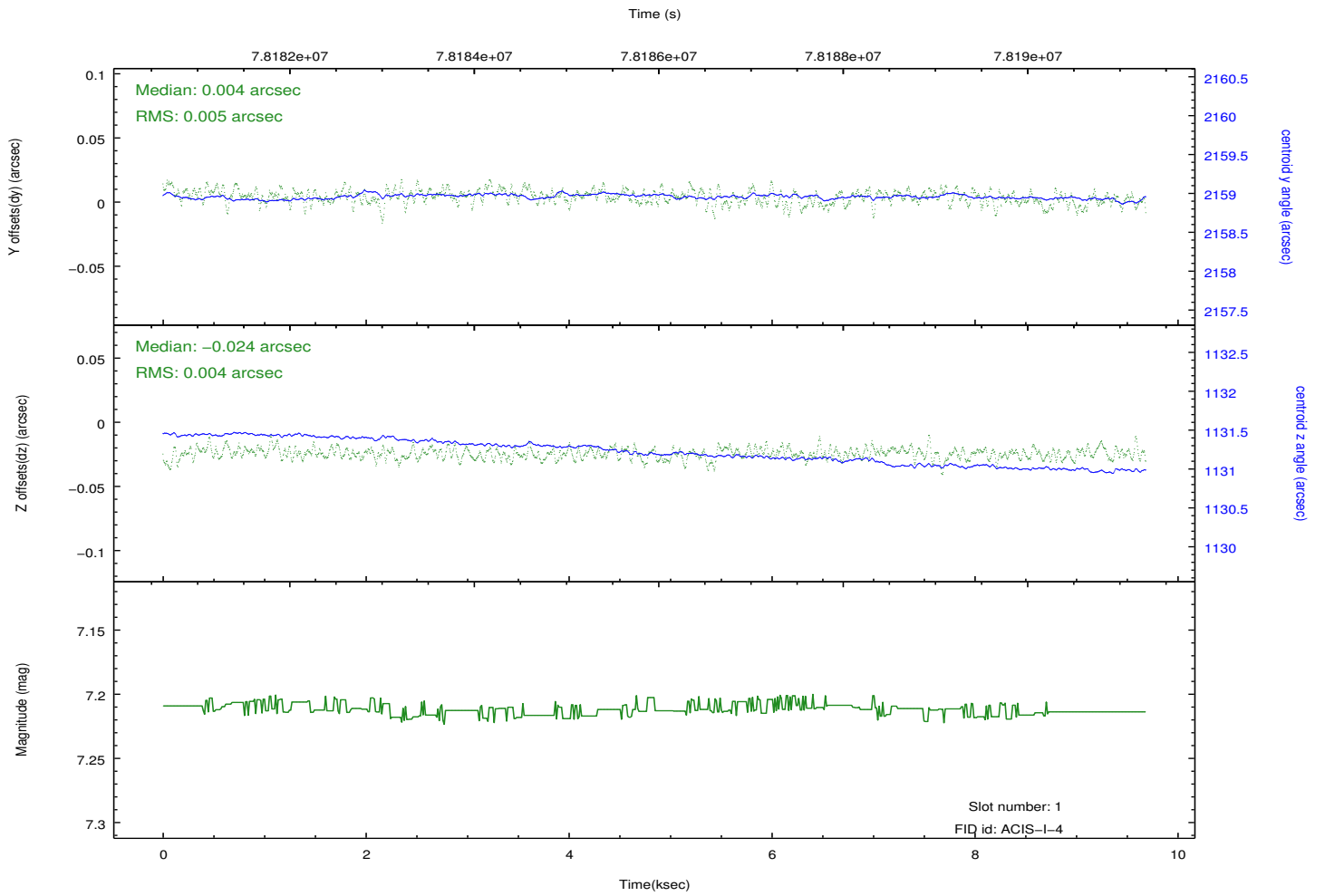
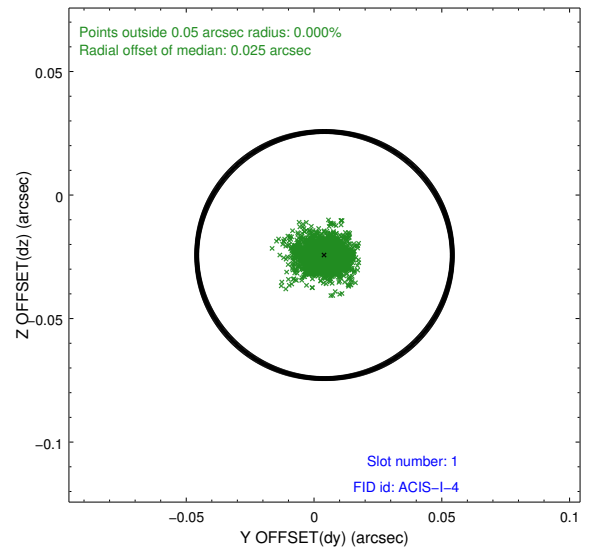
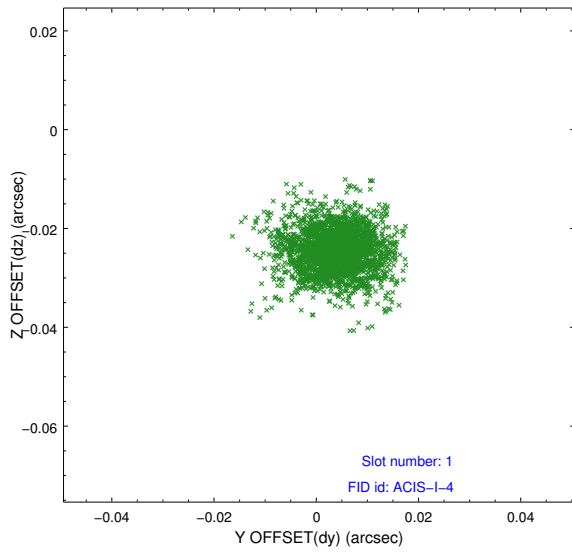


## 2.5 FID Slots

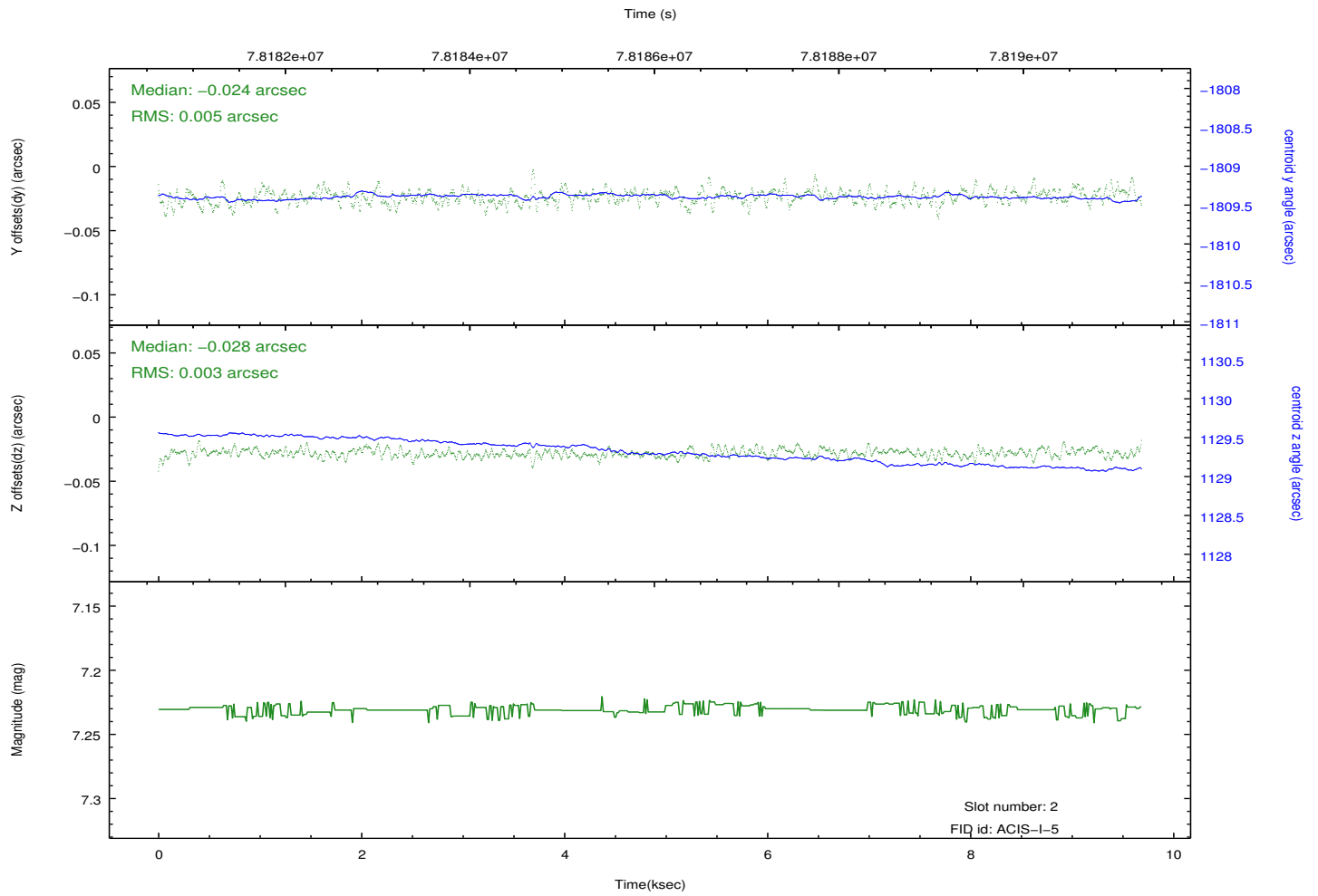
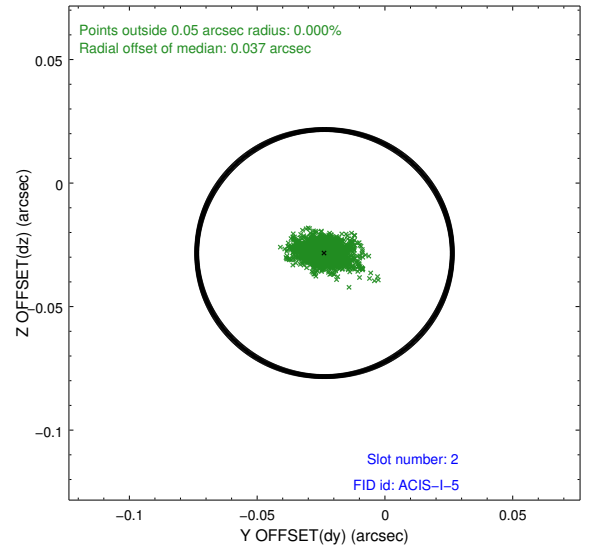
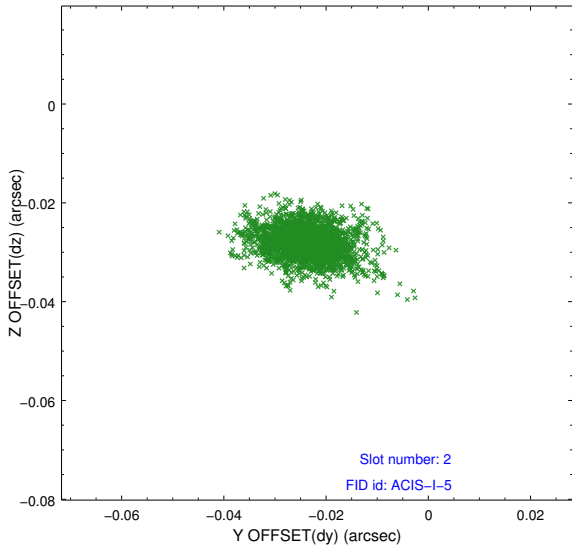
### 2.5.1 Slot 0



## 2.5.2 Slot 1



### 2.5.3 Slot 2



## A Summary

### A.1 Status

V&V Scientist	Jen Lauer
V&V Date (YYYY-MM-DD)	2012.08.31
V&V Edition	1
V&V Disposition and Status	OK
V&V Charge Time	9.67

### A.2 Comments

Charge time for this ObsId remains at previous value of 9.67 ks although with the current processing the charge time would have been 9.68 ksec.