

V&V Reference Report

L2 ASCDS Version : 8.5.1.1

Observation 5517 - L2 Version 3
Chandra X-Ray Center

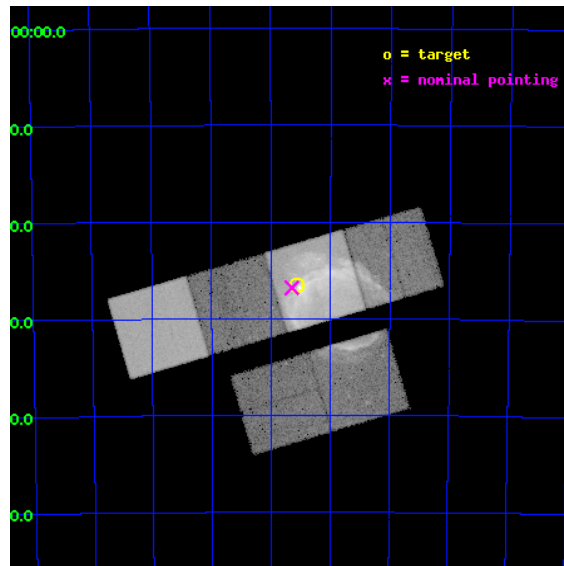
L2 Processing Date : Dec 22 2012

Contents

1	Front	2
2	OBI	3
2.1	OBI	3
2.1.1	Images	3
2.1.2	Bias	3
2.1.3	Parameters	4
2.1.4	Events	4
2.2	Compared Parameters	5
2.3	Aspect	6
2.4	Star Slots	9
2.4.1	Slot 3	9
2.4.2	Slot 4	10
2.4.3	Slot 5	11
2.4.4	Slot 6	12
2.4.5	Slot 7	13
2.5	FID Slots	14
2.5.1	Slot 0	14
2.5.2	Slot 1	15
2.5.3	Slot 2	16
A	Summary	17
A.1	Status	17
A.2	Comments	17

1 Front

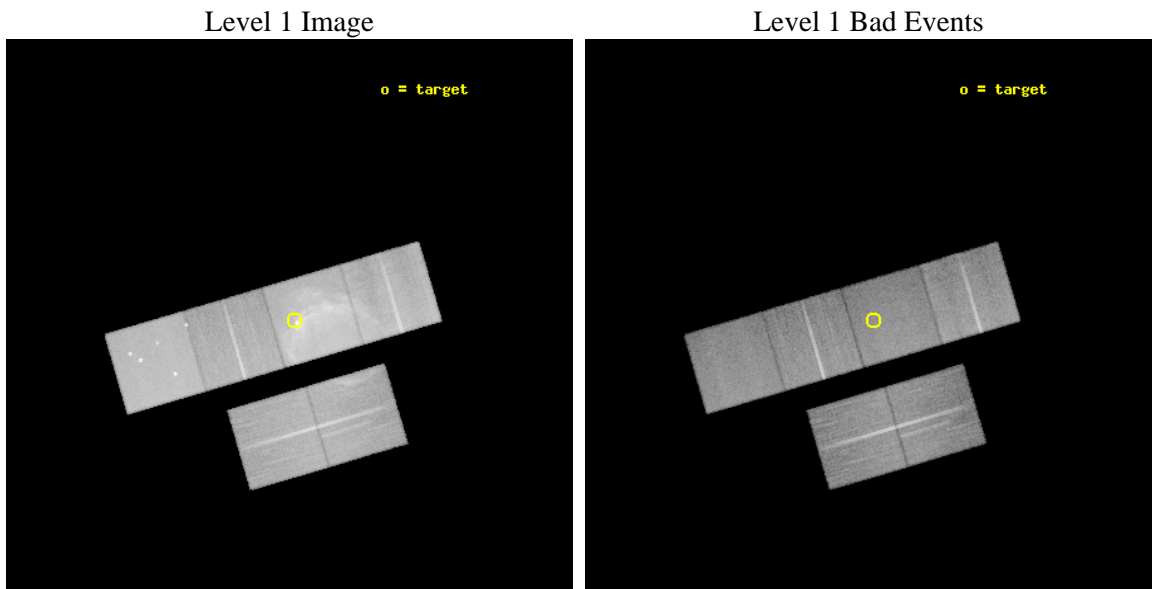
seq_num	500511	Sequence number
obs_id	5517	Observation id
title	Galactic Supernova Remnant G299.2-2.9	Proposal title
observer	Professor Gordon Garmire	Principal investigator
object	G299.2-2.9	Source name
dtcycle	0	
cycle	P	events from which exps? Prim/Second/Both
ra_targ	183.890833	Observer's specified target RA [deg]
dec_targ	-65.44275	Observer's specified target Dec [deg]
ra_nom	183.91171555917	Nominal RA [deg]
dec_nom	-65.447060485186	Nominal Dec [deg]
roll_nom	343.621924446864	Nominal Roll [deg]
revision	3	Processing version of data
ontime	29958.399888396	Sum of GTIs [s]
livetime	29579.048590227	Livetime [s]
ontime2	29955.158908129	Sum of GTIs [s]
ontime3	29955.158908099	Sum of GTIs [s]
ontime5	29958.399888396	Sum of GTIs [s]
ontime6	29958.399888396	Sum of GTIs [s]
ontime7	29958.399888396	Sum of GTIs [s]
ontime8	29958.399888396	Sum of GTIs [s]
l2events	559064	Number of level 2 events



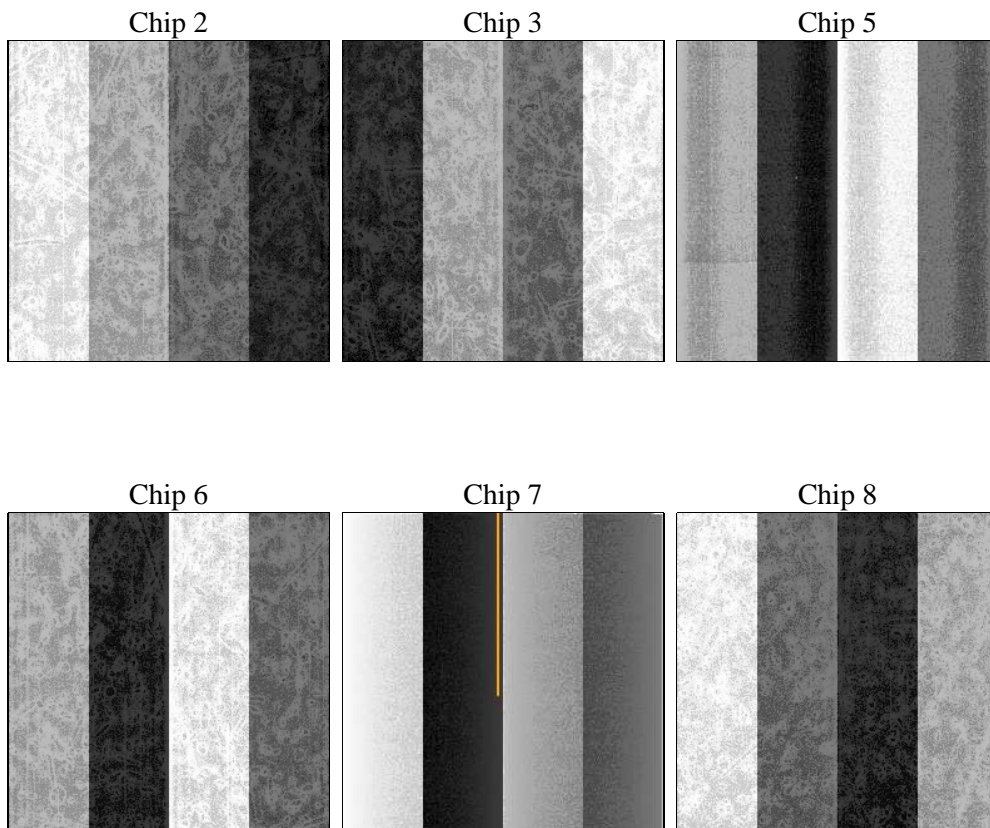
2 OBI

2.1 OBI

2.1.1 Images



2.1.2 Bias



2.1.3 Parameters

obi_num	1	Obi number	sched_exp_time	30000.000000	[s] Scheduled observation exposure time
ascdsver	8.5.1.1	Processing system revision	ontime	29958.399888396	Sum of GTIs [s]
caldbver	4.5.5	 	ontime2	29955.158908129	Sum of GTIs [s]
date	2012-12-21T22:34:28	Date and time of file creation	ontime3	29955.158908099	Sum of GTIs [s]
revision	3	Processing version of data	ontime5	29958.399888396	Sum of GTIs [s]
			ontime6	29958.399888396	Sum of GTIs [s]
			ontime7	29958.399888396	Sum of GTIs [s]
			ontime8	29958.399888396	Sum of GTIs [s]
			l1events	1828081	Number of level 1 events

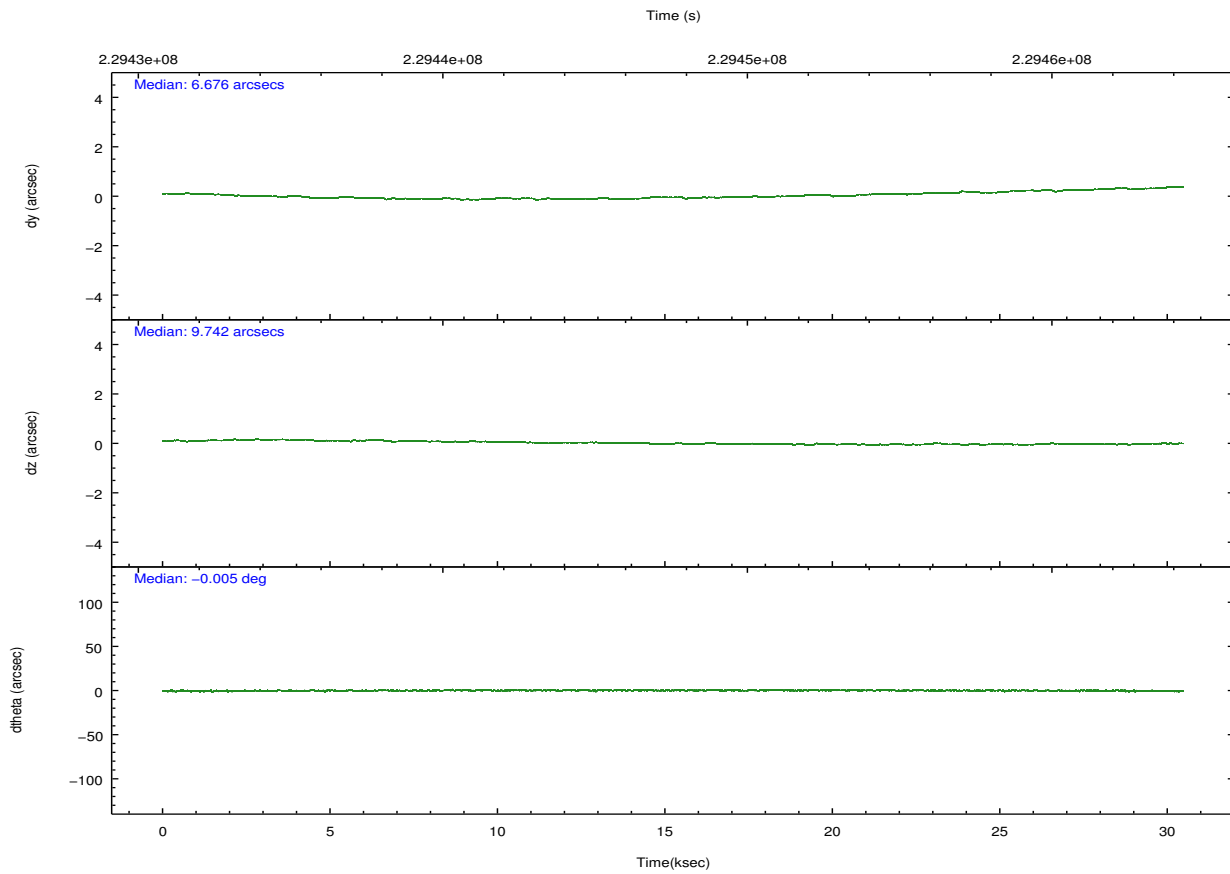
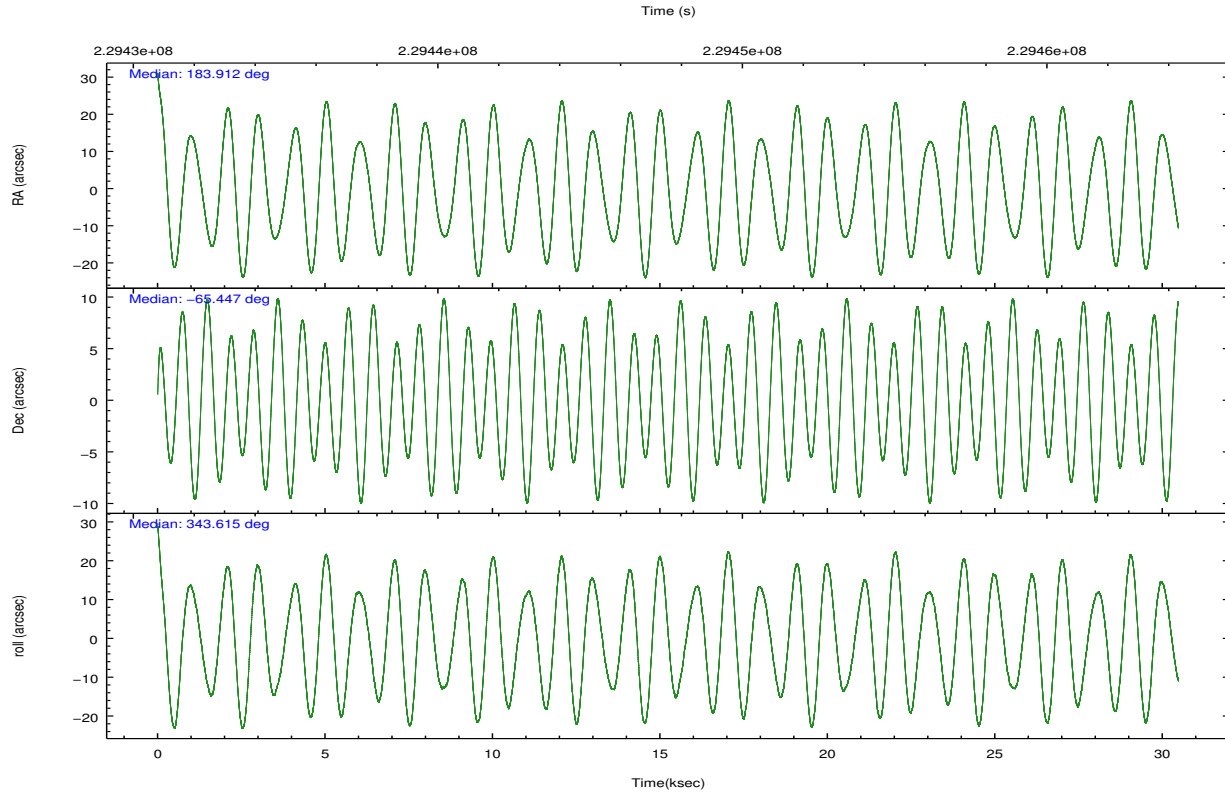
2.1.4 Events

	ccd 2	ccd 3	ccd 5	ccd 6	ccd 7	ccd 8		ccd 2	ccd 3	ccd 5	ccd 6	ccd 7	ccd 8
level 1 events	234248	232848	348633	232700	472796	306856	grade 0 events	12710	23905	21369	12371	67733	33875
rejected events	206357	192510	186170	203992	184001	228735		5%	10%	6%	5%	14%	11%
rejected %	88%	82%	53%	87%	38%	74%	grade 1 events	160	171	587	116	332	260
								0%	0%	0%	0%	0%	0%
							grade 2 events	5665	5991	45642	5783	69796	14691
								2%	2%	13%	2%	14%	4%
							grade 3 events	2496	2833	6438	2617	30648	6739
								1%	1%	1%	1%	6%	2%
							grade 4 events	2535	2926	5966	2609	30212	6409
								1%	1%	1%	1%	6%	2%
							grade 5 events	9115	10118	25081	10771	30605	14348
								3%	4%	7%	4%	6%	4%
							grade 6 events	4490	4688	83063	5331	90435	16419
								1%	2%	23%	2%	19%	5%
							grade 7 events	197077	182216	160487	193102	153035	214115
								84%	78%	46%	82%	32%	69%

2.2 Compared Parameters

Parameter	Planned	Actual	Parameter	Planned	Actual
Instrument	ACIS	ACIS	Obspar format version number	7	7
Detector	ACIS-235678	ACIS-235678	Obspar file type	PREDICTED	ACTUAL
Grating	NONE	NONE	Obspar update status	NONE	UPDATED
Data mode	FAINT	FAINT	Number of optional ACIS chips dropped	0	0
Observation mode	POINTING	POINTING	On-chip summing requested	N	N
[deg] Pointing RA	183.848174	183.9117155591731	Subarray requested	NONE	NONE
[deg] Pointing Dec	-65.453833	-65.4470604851856	Alternating exposures requested	N	N
[deg] Pointing Roll	343.407501	343.6219244686435	[s] Primary exposure time	0.000000	3.2
[mm] SIM focus pos	-0.684267	-0.6828225247311905			
[mm] SIM defocus	0	0.001444936568705701			
[mm] SIM translation stage pos	-190.132523	-190.1400660498719			
[mm] SIM translation stage offset	0	0.00754346686406393			
[s] Observation start time (MET)	229432804.184000	229431694.70948			
Observation start date	2005-04-09T11:19:00	2005-04-09T11:01:34			
[s] Observation end time (MET)	229462804.184000	229463566.06093			
Observation end date	2005-04-09T19:39:00	2005-04-09T19:52:46			
Read mode	TIMED	TIMED			

2.3 Aspect

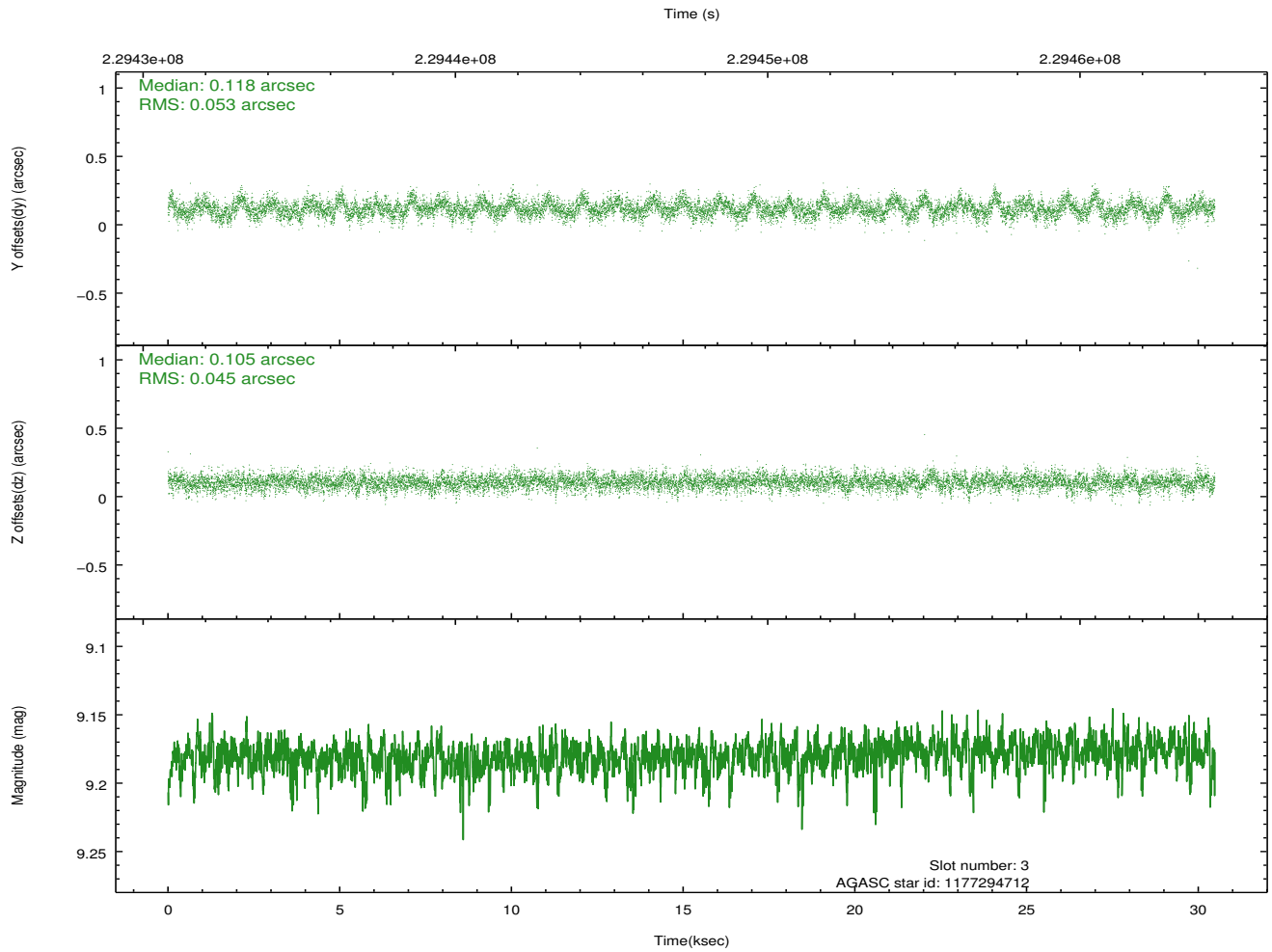
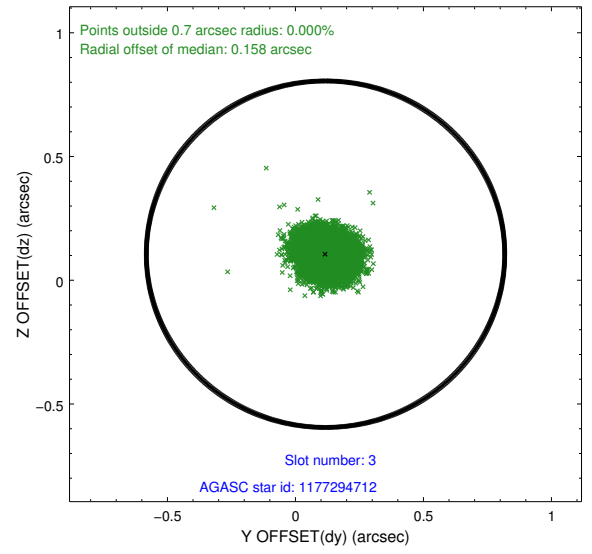
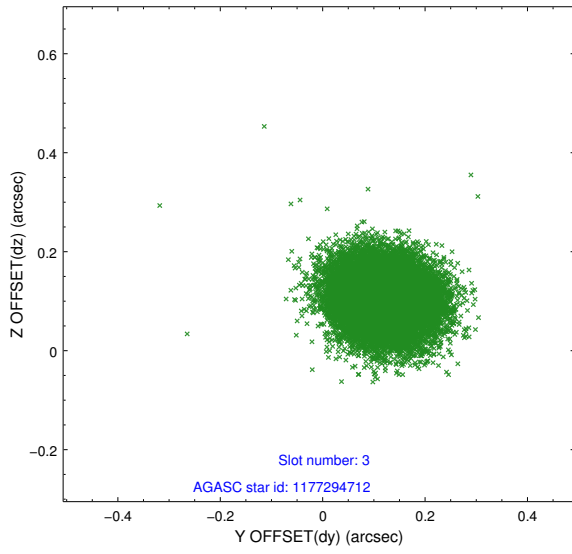


Slot Statistics

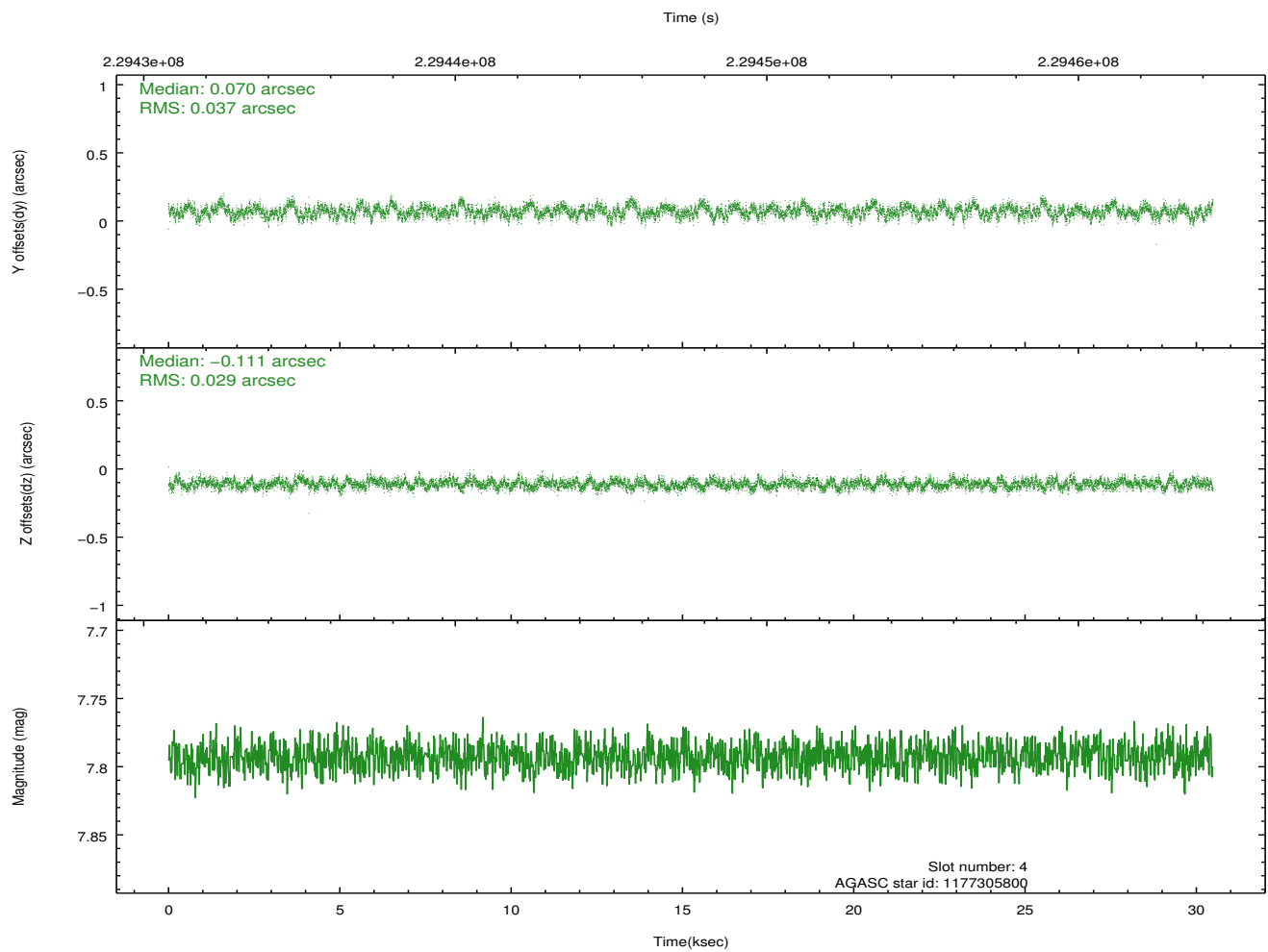
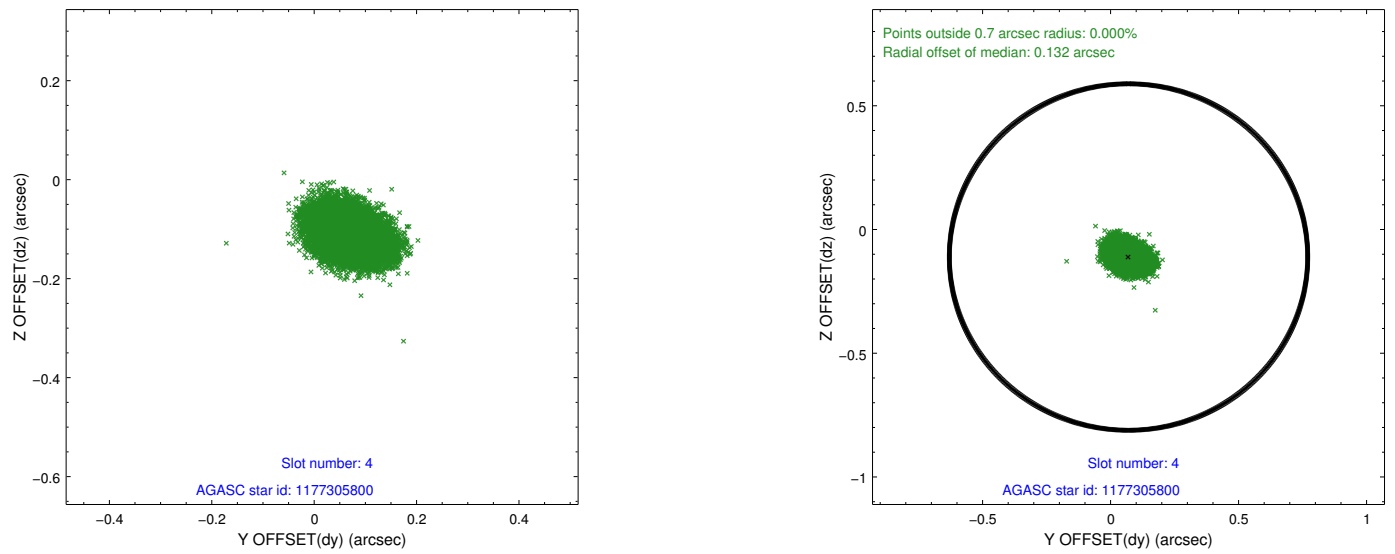
slot	status	id	mag	n_pts	med_dy	med_dz	dr1	dr2	ra	dec	mean_y	mean_z
0	FID	ACIS-S-2	7.10	7434	-0.058	-0.032	0.008	0.013	0.000000	0.000000	-759.48	-1731.05
1	FID	ACIS-S-4	7.21	7434	0.098	0.037	0.006	0.011	0.000000	0.000000	2153.89	177.48
2	FID	ACIS-S-5	7.23	7434	-0.070	0.004	0.008	0.013	0.000000	0.000000	-1812.28	171.13
3	GUIDE	1177294712	9.18	14865	0.118	0.105	0.074	0.119	182.404179	-65.377577	-2146.42	-379.13
4	GUIDE	1177305800	7.79	14869	0.070	-0.111	0.050	0.083	182.814616	-65.027625	-1939.88	1009.38
5	GUIDE	1177311944	6.88	14869	0.031	-0.116	0.063	0.107	182.934554	-64.948787	-1850.94	1334.80
6	GUIDE	1177944384	6.73	14869	-0.052	0.099	0.064	0.107	185.117599	-65.842660	2197.28	-825.10
7	GUIDE	1177959120	8.55	14869	-0.175	0.023	0.068	0.112	184.931470	-66.169892	2250.48	-2033.25

2.4 Star Slots

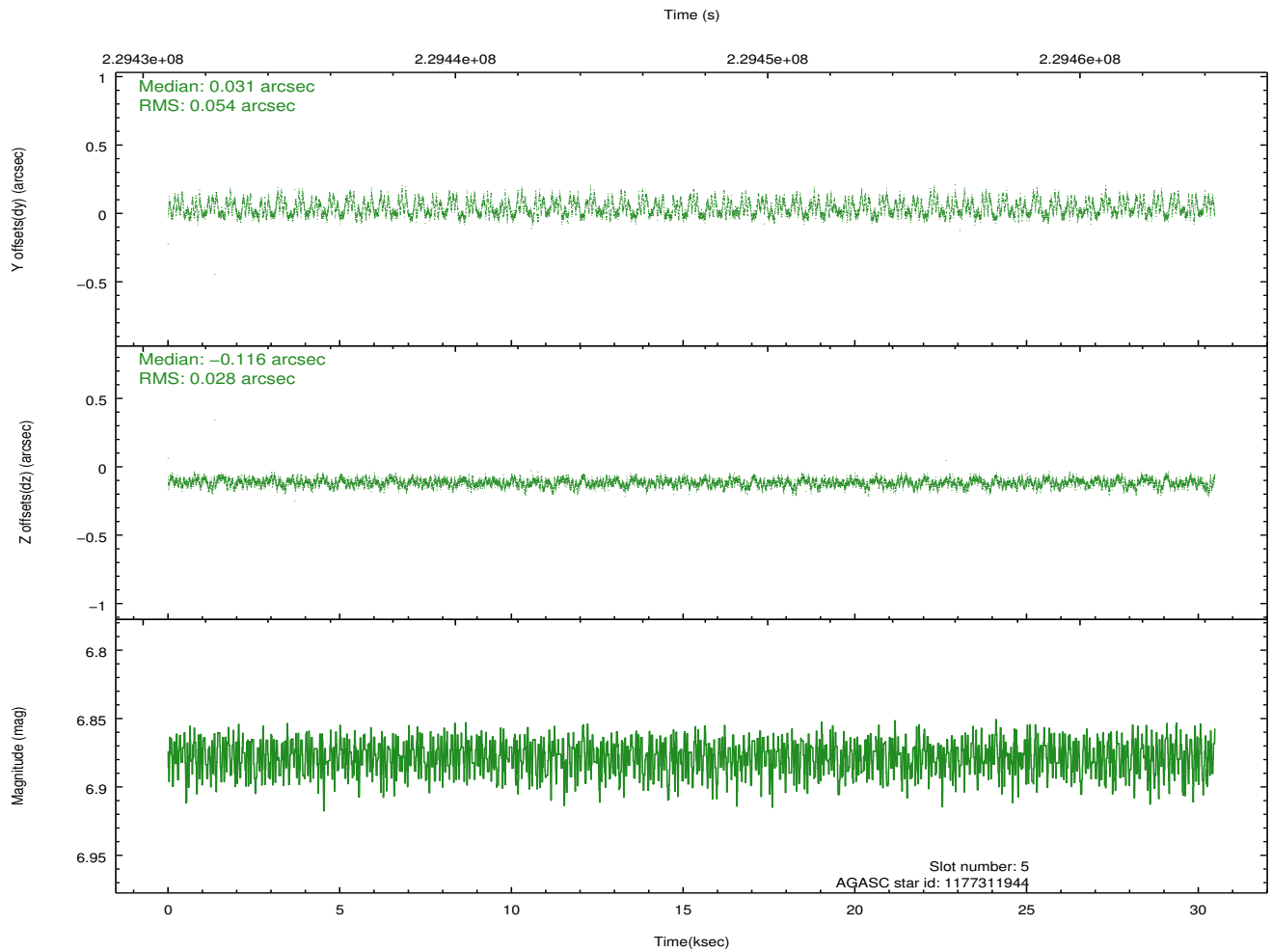
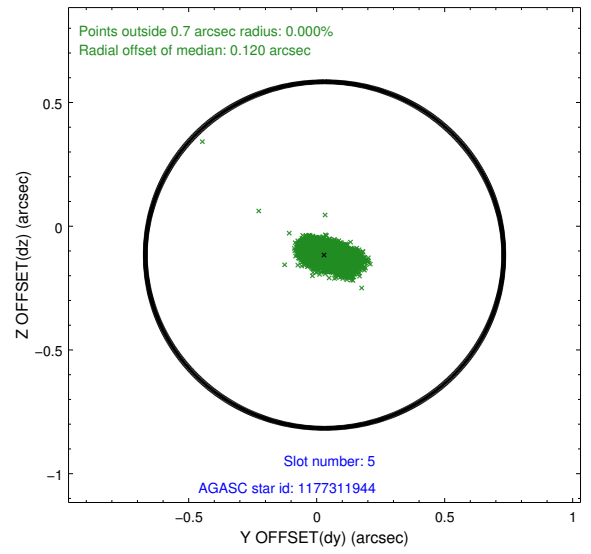
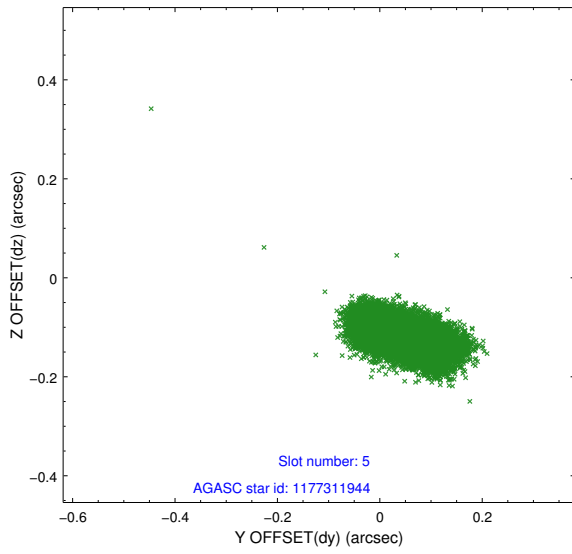
2.4.1 Slot 3



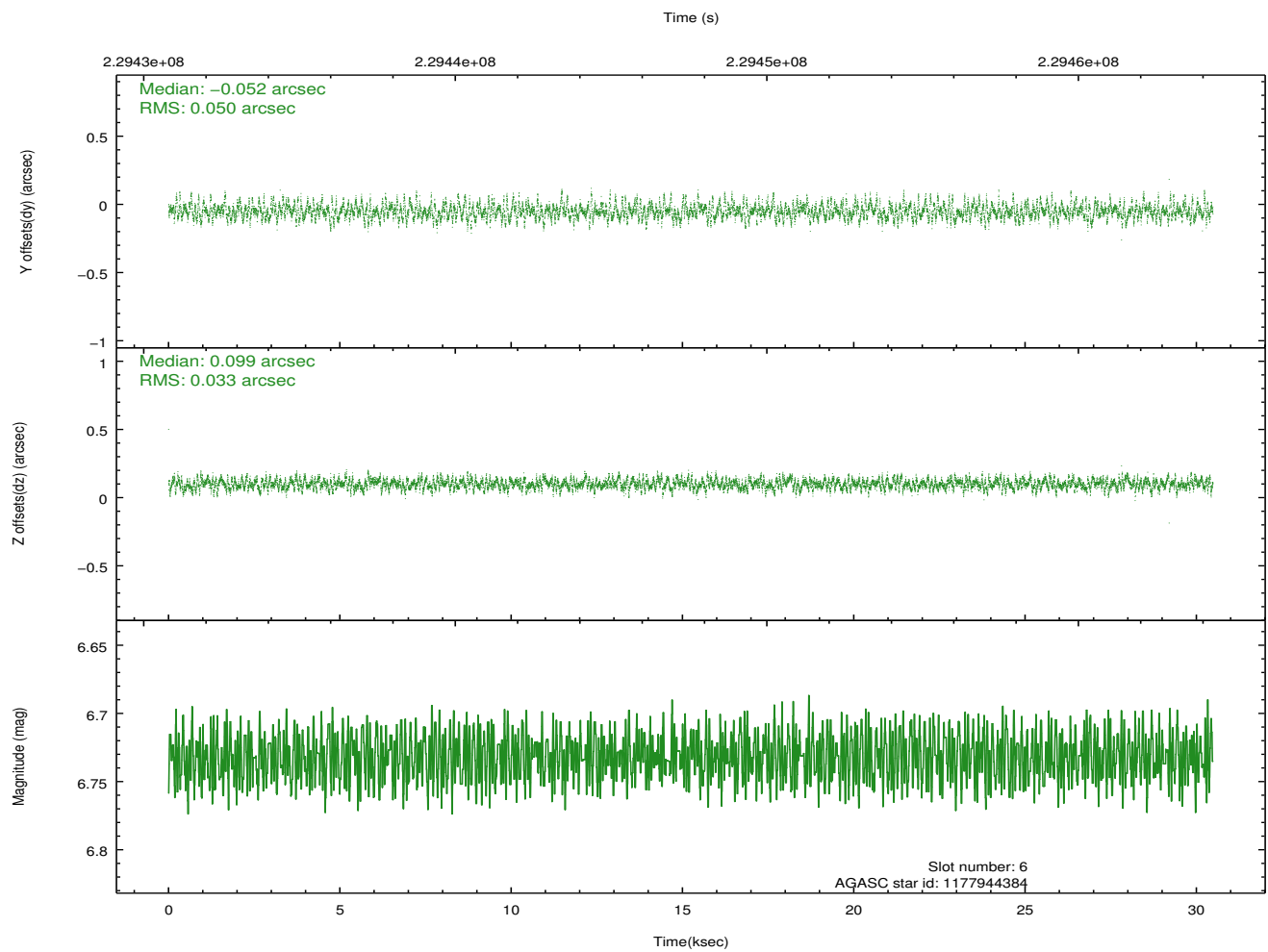
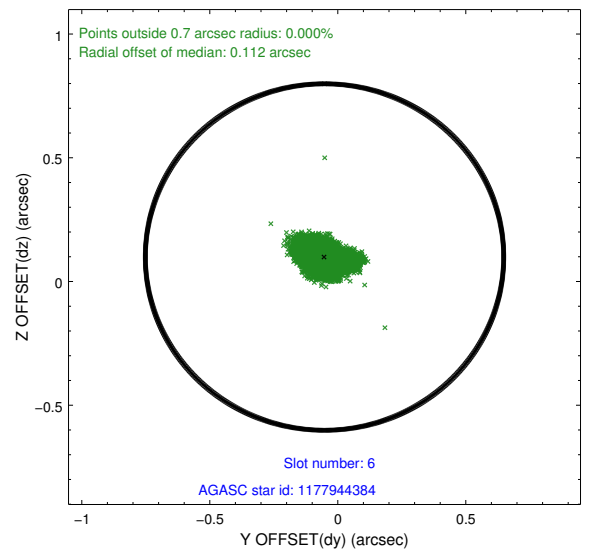
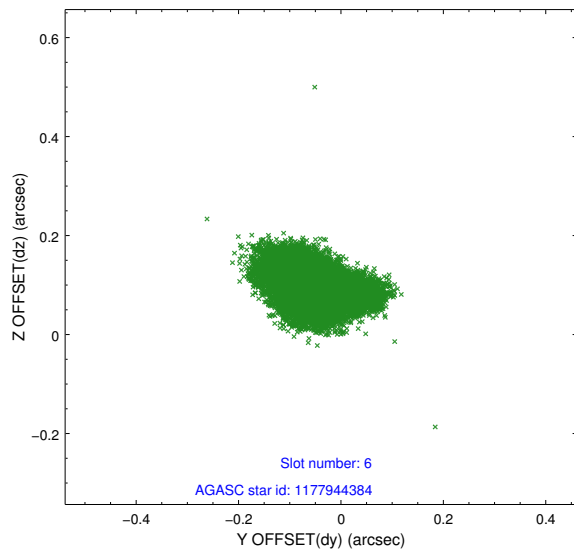
2.4.2 Slot 4



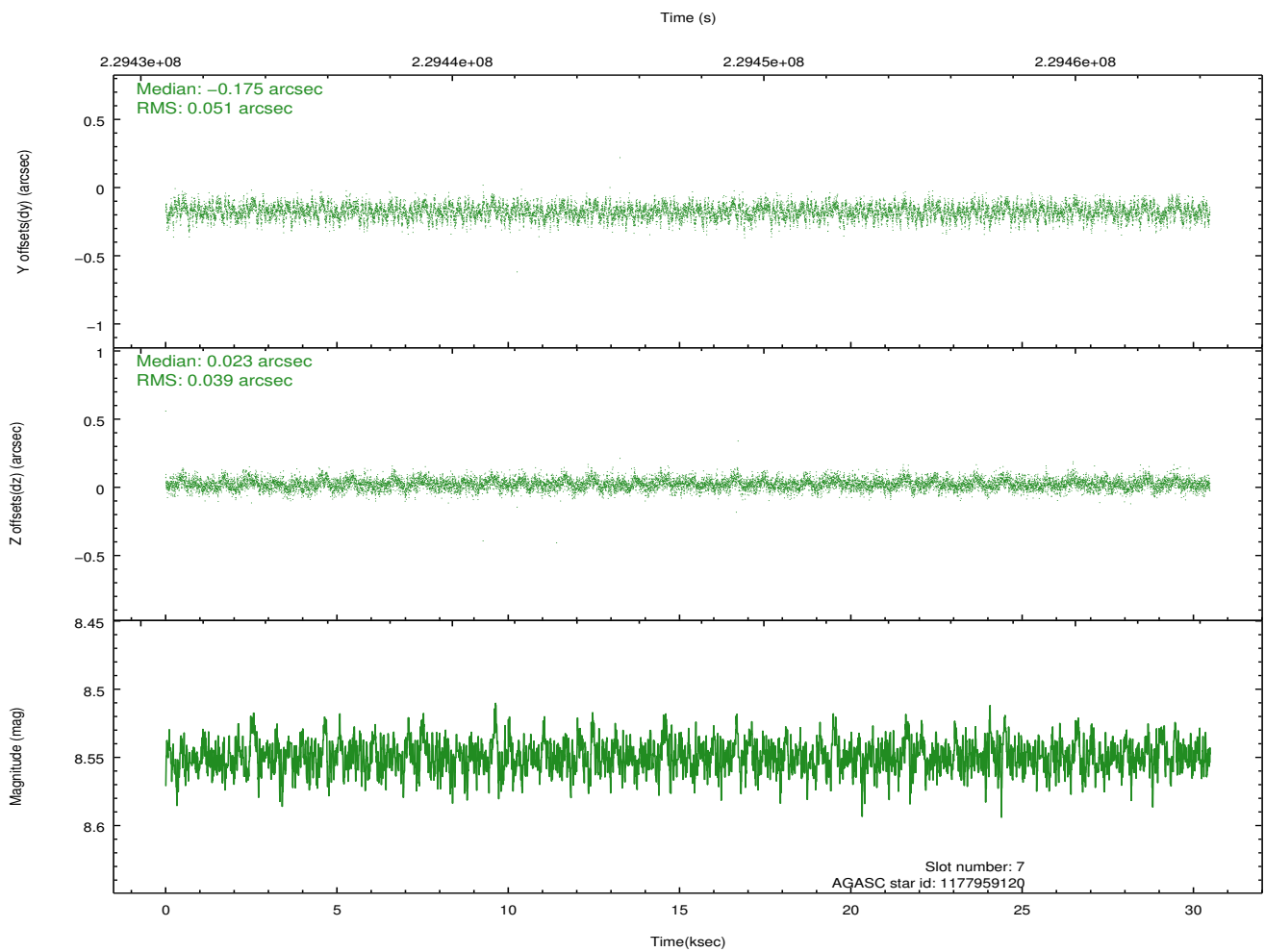
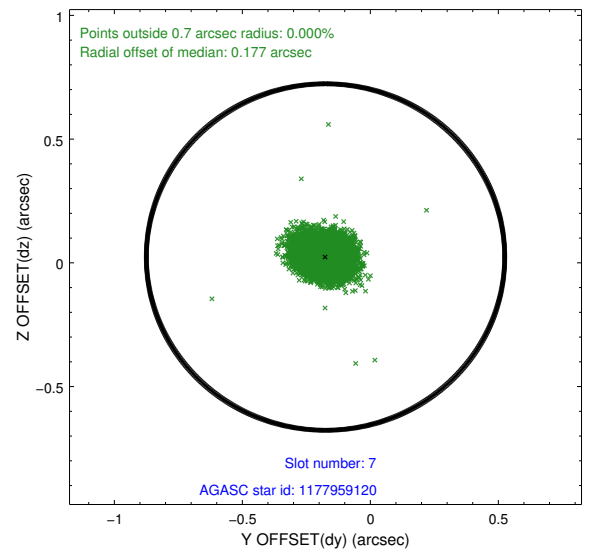
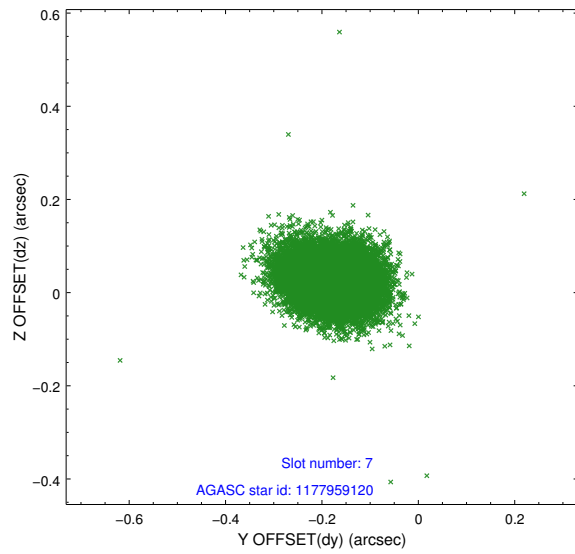
2.4.3 Slot 5



2.4.4 Slot 6

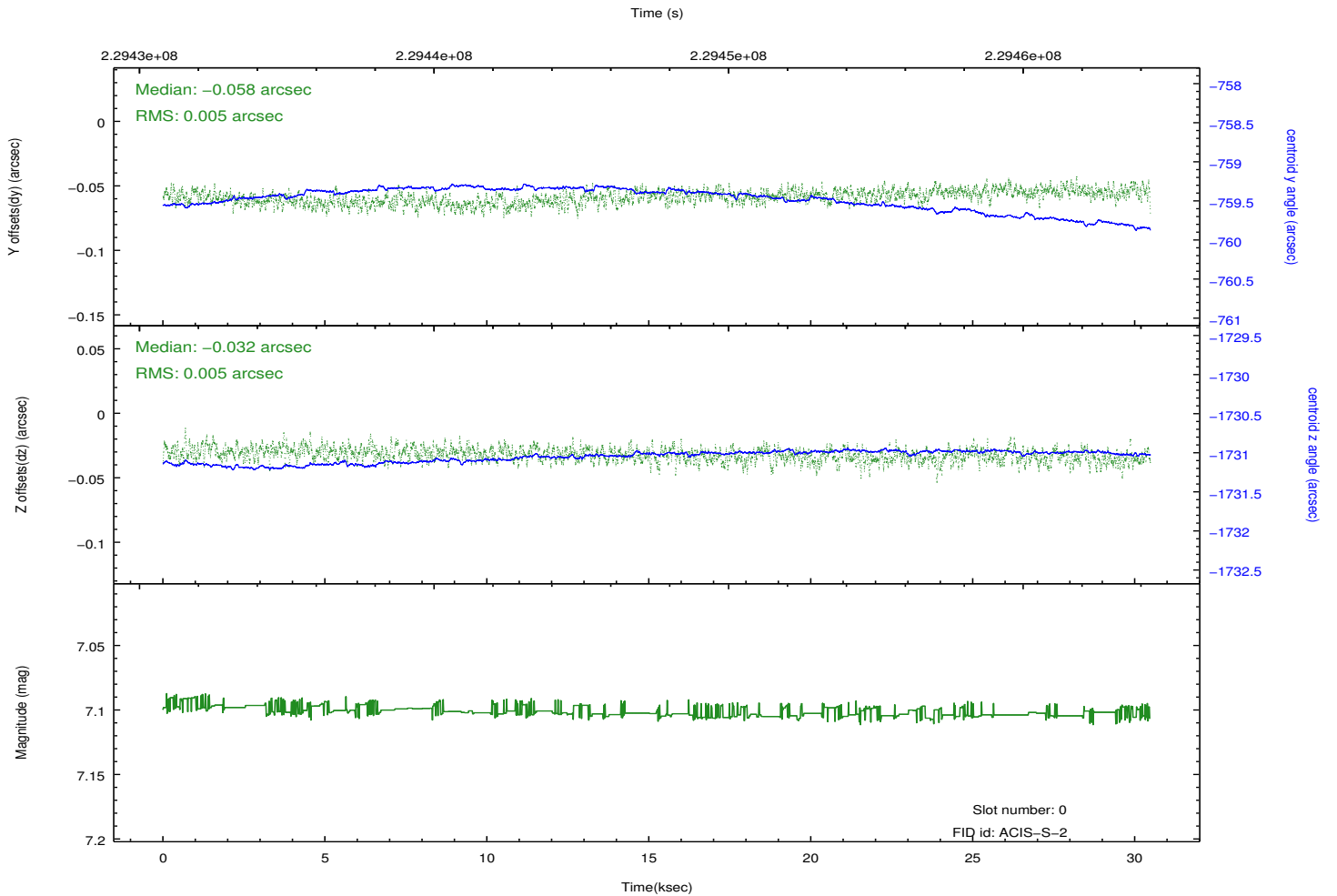
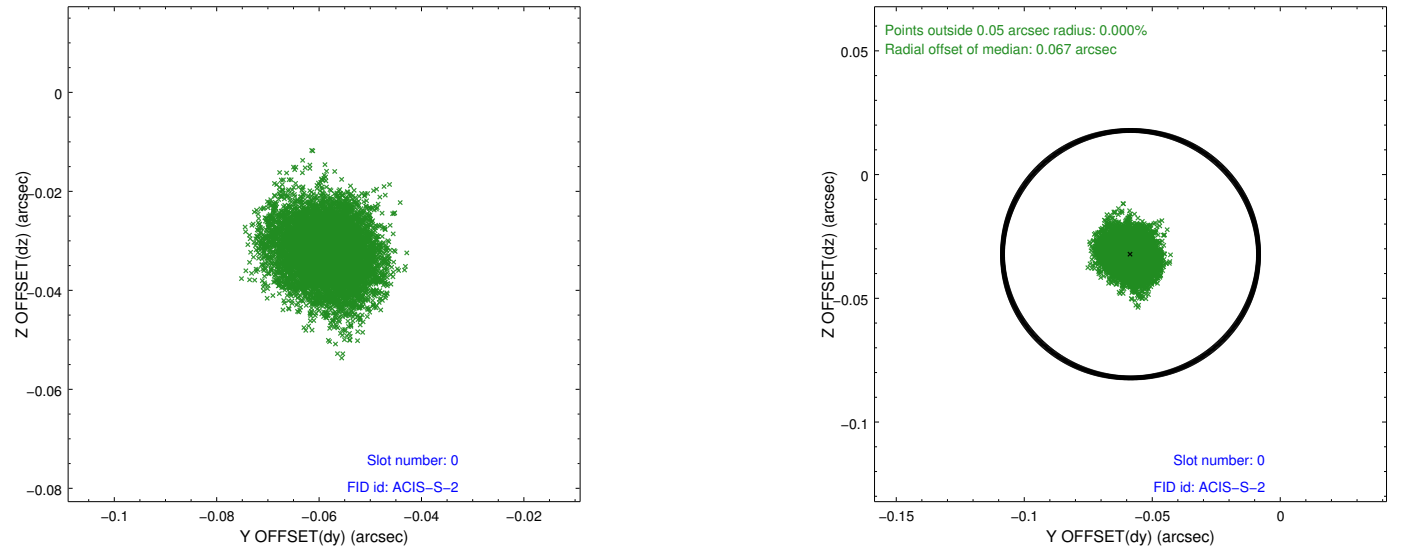


2.4.5 Slot 7

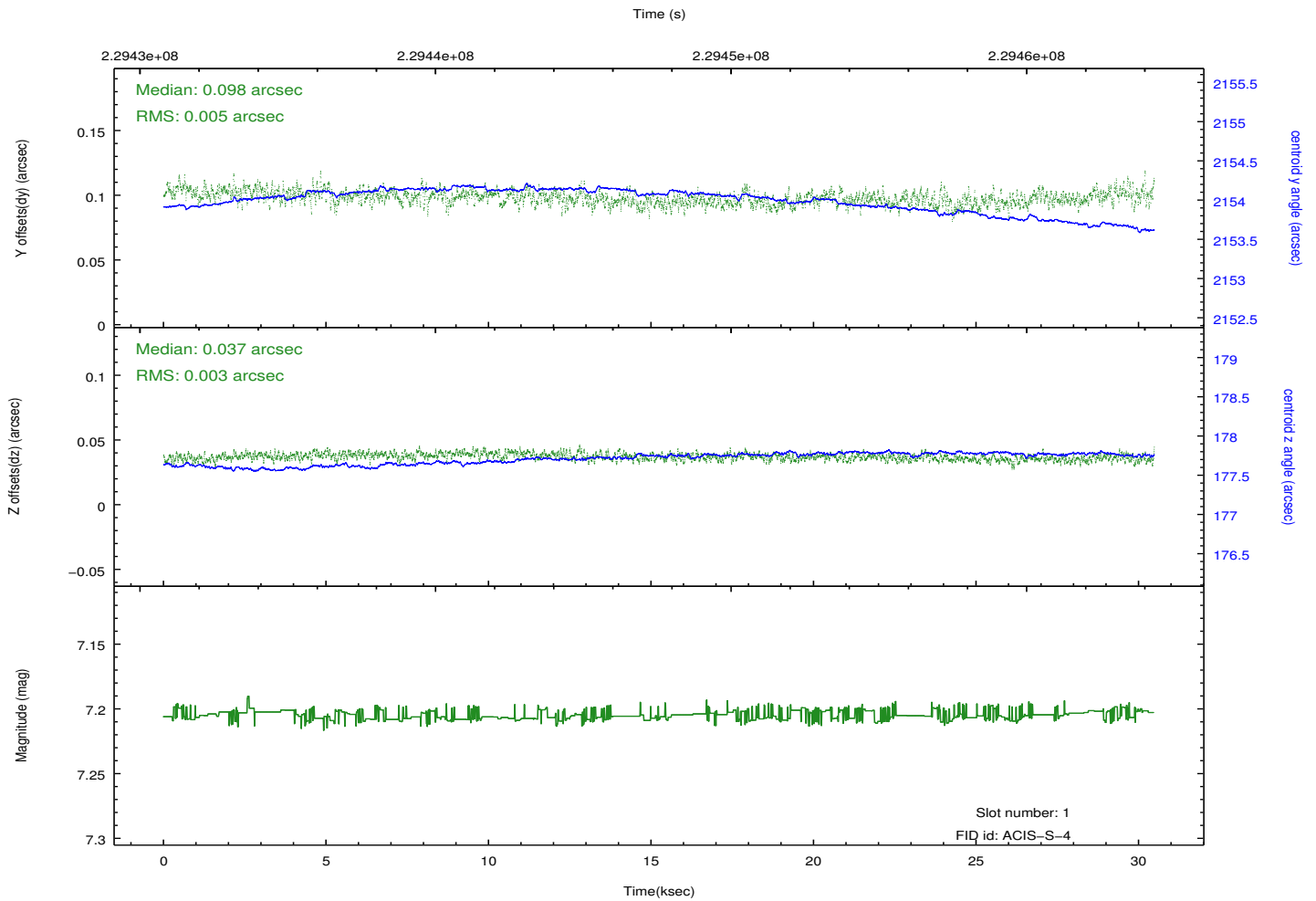
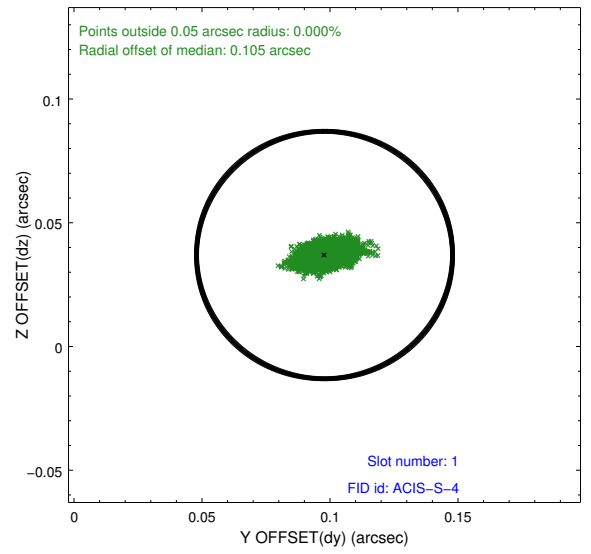
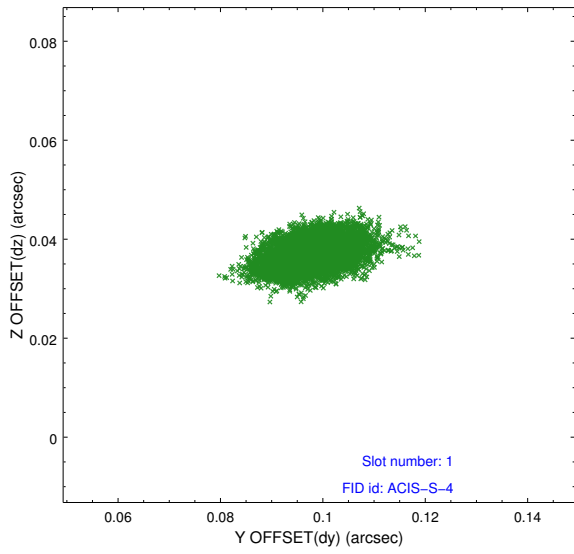


2.5 FID Slots

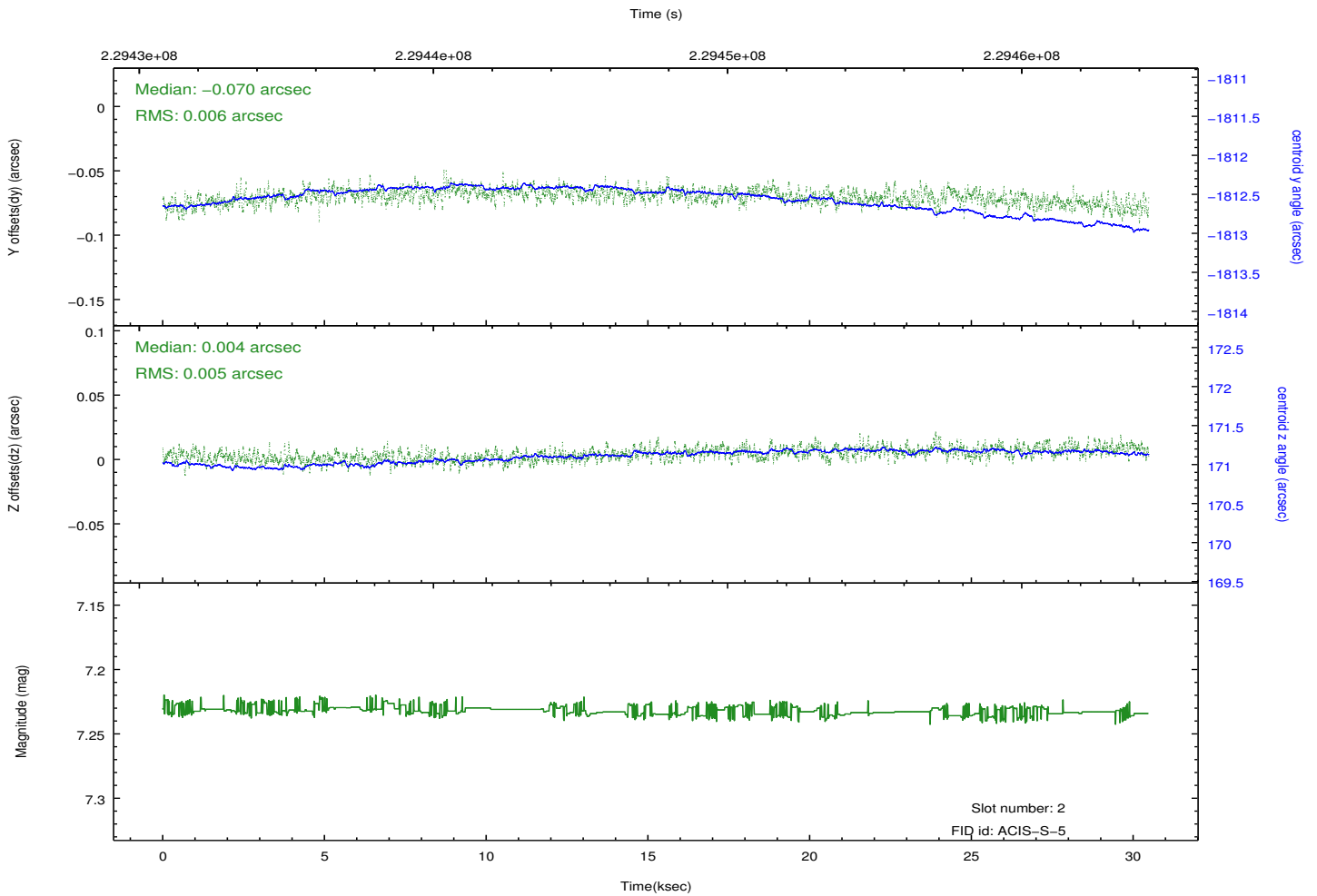
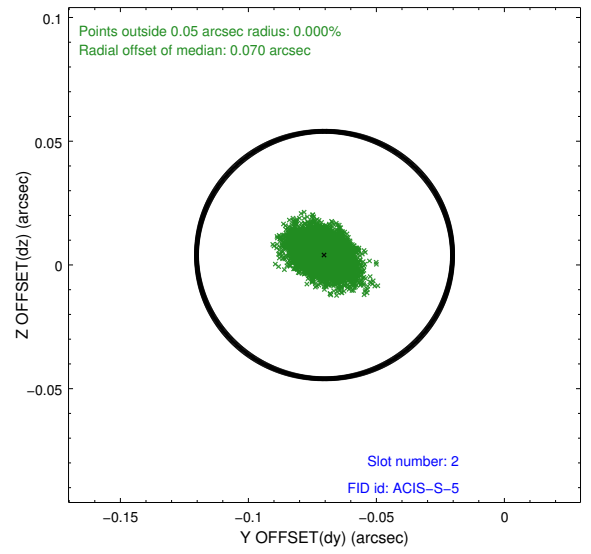
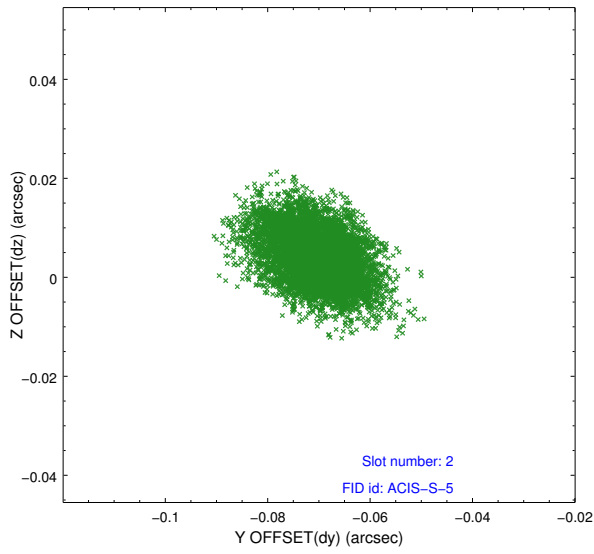
2.5.1 Slot 0



2.5.2 Slot 1



2.5.3 Slot 2



A Summary

A.1 Status

V&V Scientist	Jen Lauer
V&V Date (YYYY-MM-DD)	2013.01.15
V&V Edition	1
V&V Disposition and Status	OK
V&V Charge Time	29.95839

A.2 Comments

Roll preference met.