

V&V Reference Report

L2 ASCDS Version : 8.5.1

Observation 5537 - L2 Version 3
Chandra X-Ray Center

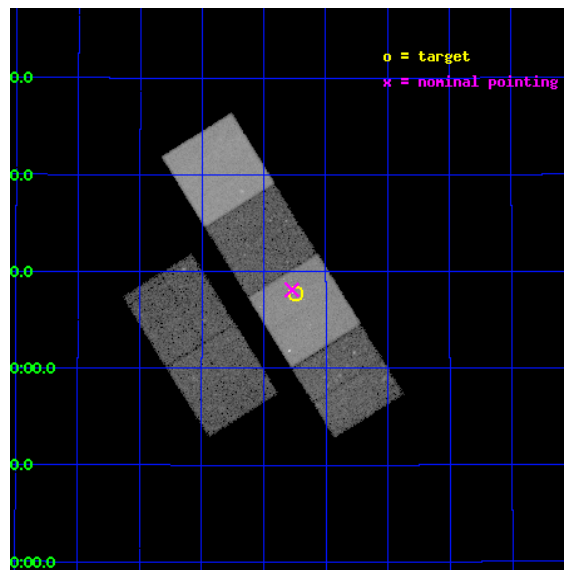
L2 Processing Date : Dec 18 2012

Contents

1	Front	2
2	OBI	3
2.1	OBI	3
2.1.1	Images	3
2.1.2	Bias	3
2.1.3	Parameters	4
2.1.4	Events	4
2.2	Compared Parameters	5
2.3	Aspect	6
2.4	Star Slots	9
2.4.1	Slot 3	9
2.4.2	Slot 4	10
2.4.3	Slot 5	11
2.4.4	Slot 6	12
2.4.5	Slot 7	13
2.5	FID Slots	14
2.5.1	Slot 0	14
2.5.2	Slot 1	15
2.5.3	Slot 2	16
A	Summary	17
A.1	Status	17
A.2	Comments	17

1 Front

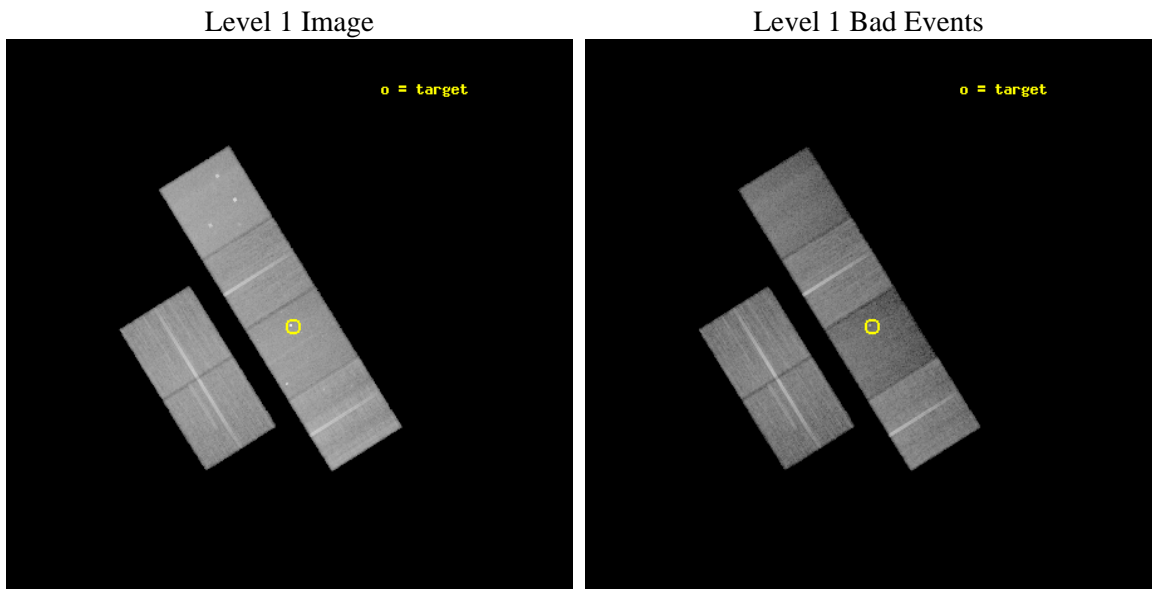
seq_num	500530	Sequence number
obs_id	5537	Observation id
title	RX J193214.6+300741: A young supernova remnant in a low density medium?	Proposal title
observer	Dr. Fangjun Lu	Principal investigator
object	RX J193214.6+300741	Source name
dtcycle	0	
cycle	P	events from which exps? Prim/Second/Both
ra_targ	293.060833	Observer's specified target RA [deg]
dec_targ	30.128056	Observer's specified target Dec [deg]
ra_nom	293.06831754258	Nominal RA [deg]
dec_nom	30.135237651543	Nominal Dec [deg]
roll_nom	58.100504428164	Nominal Roll [deg]
revision	3	Processing version of data
ontime	35999.99986589	Sum of GTIs [s]
livetime	35544.14619099	Livetime [s]
ontime2	35999.99986589	Sum of GTIs [s]
ontime3	35996.758865714	Sum of GTIs [s]
ontime5	35999.99986589	Sum of GTIs [s]
ontime6	35996.758895636	Sum of GTIs [s]
ontime7	35999.99986589	Sum of GTIs [s]
ontime8	35996.758875698	Sum of GTIs [s]
l2events	318178	Number of level 2 events



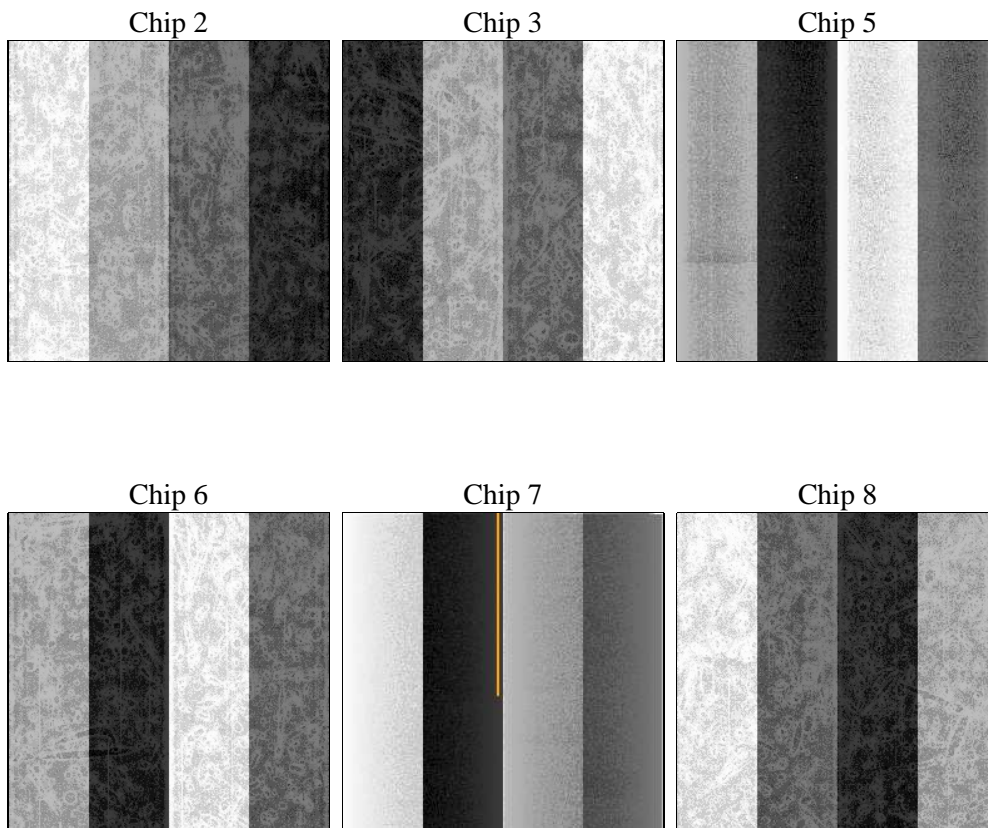
2 OBI

2.1 OBI

2.1.1 Images



2.1.2 Bias



2.1.3 Parameters

obi_num	0	Obi number	sched_exp_time	36043.691000	[s] Scheduled observation exposure time
ascdsver	8.5.1	Processing system revision	ontime	35999.99986589	Sum of GTIs [s]
caldsver	4.5.5	 	ontime2	35999.99986589	Sum of GTIs [s]
date	2012-12-18T06:11:11	Date and time of file creation	ontime3	35996.758865714	Sum of GTIs [s]
revision	3	Processing version of data	ontime5	35999.99986589	Sum of GTIs [s]
			ontime6	35996.758895636	Sum of GTIs [s]
			ontime7	35999.99986589	Sum of GTIs [s]
			ontime8	35996.758875698	Sum of GTIs [s]
			l1events	1378050	Number of level 1 events

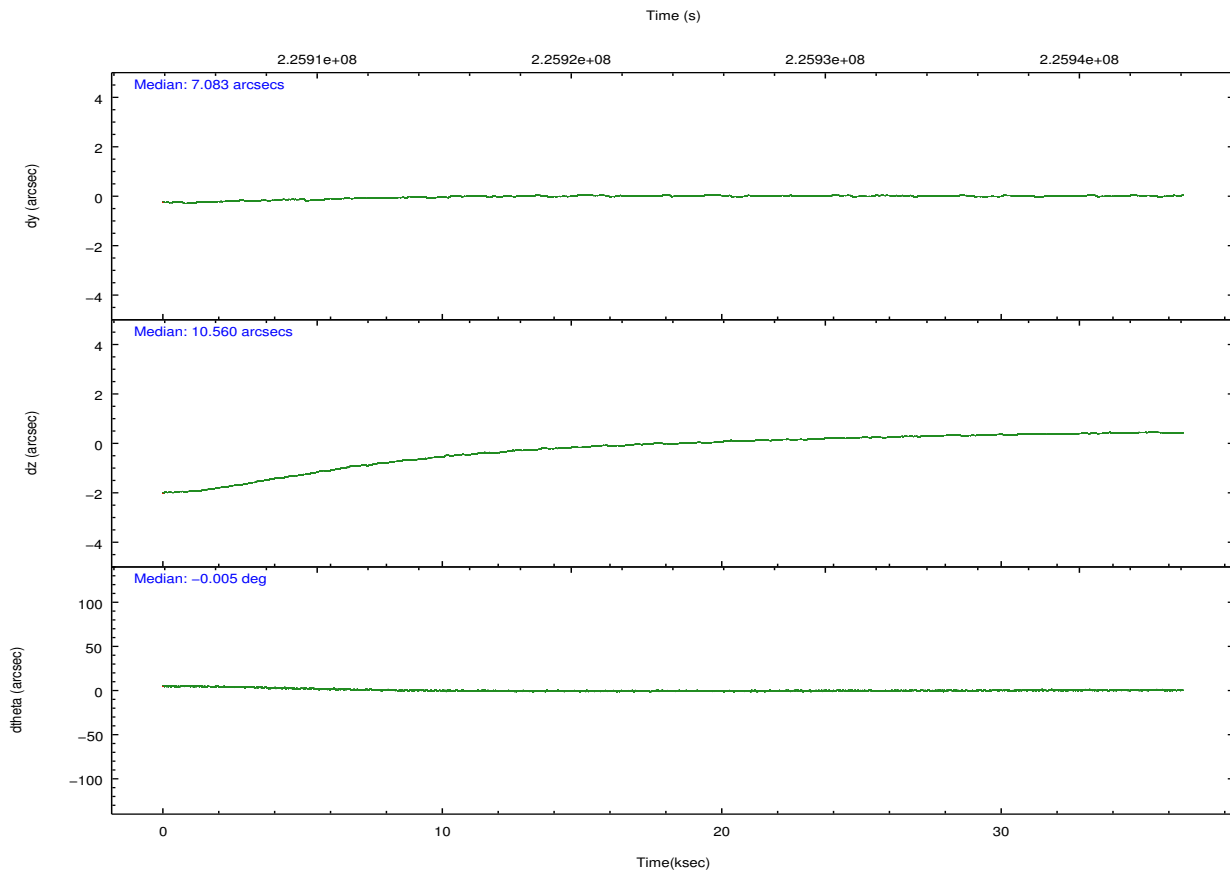
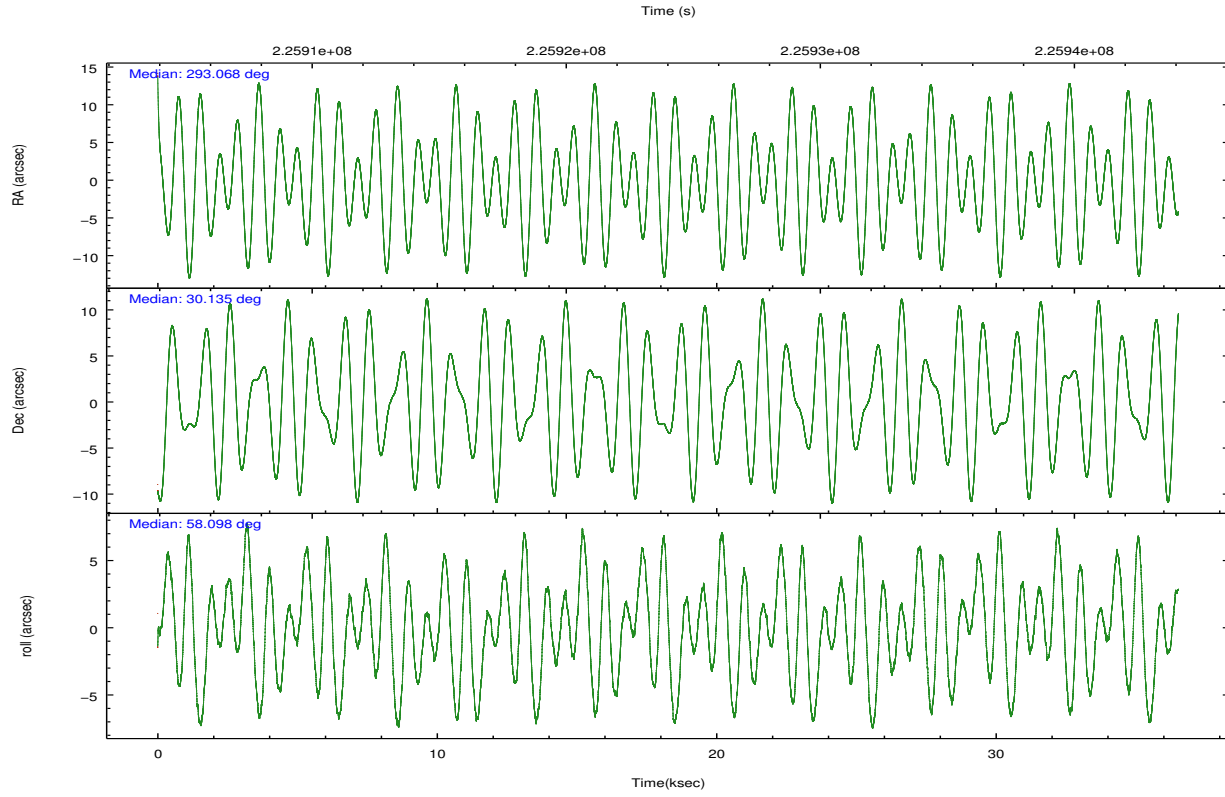
2.1.4 Events

	ccd 2	ccd 3	ccd 5	ccd 6	ccd 7	ccd 8		ccd 2	ccd 3	ccd 5	ccd 6	ccd 7	ccd 8
level 1 events	224399	201291	263938	214148	209443	264831	grade 0 events	8982	8216	17761	10029	13431	20294
rejected events	202493	180726	121377	190547	101037	198141		4%	4%	6%	4%	6%	7%
rejected %	90%	89%	45%	88%	48%	74%	grade 1 events	129	97	292	121	238	195
								0%	0%	0%	0%	0%	0%
							grade 2 events	4986	4197	42070	4714	23340	14918
								2%	2%	15%	2%	11%	5%
							grade 3 events	2230	2236	7133	2460	10931	7255
								0%	1%	2%	1%	5%	2%
							grade 4 events	2265	2236	6805	2225	10524	6889
								1%	1%	2%	1%	5%	2%
							grade 5 events	6056	7007	21661	7126	21827	10792
								2%	3%	8%	3%	10%	4%
							grade 6 events	3446	3682	68803	4175	50191	17345
								1%	1%	26%	1%	23%	6%
							grade 7 events	196305	173620	99413	183298	78961	187143
								87%	86%	37%	85%	37%	70%

2.2 Compared Parameters

Parameter	Planned	Actual	Parameter	Planned	Actual
Instrument	ACIS	ACIS	Obspar format version number	7	7
Detector	ACIS-235678	ACIS-235678	Obspar file type	PREDICTED	ACTUAL
Grating	NONE	NONE	Obspar update status	NONE	UPDATED
Data mode	VFAINT	VFAINT	Number of optional ACIS chips dropped	0	0
Observation mode	POINTING	POINTING	On-chip summing requested	N	N
[deg] Pointing RA	293.067702	293.0683175425835	Subarray requested	NONE	NONE
[deg] Pointing Dec	30.108019	30.13523765154292	Alternating exposures requested	N	N
[deg] Pointing Roll	57.944185	58.10050442816423	[s] Primary exposure time	0.000000	3.2
[mm] SIM focus pos	-0.684267	-0.6828225247311905			
[mm] SIM defocus	0	0.001444936568705701			
[mm] SIM translation stage pos	-190.132523	-190.1425803651734			
[mm] SIM translation stage offset	0	0.01005778216563158			
[s] Observation start time (MET)	225906223.184000	225905057.512			
Observation start date	2005-02-27T15:42:39	2005-02-27T15:24:17			
[s] Observation end time (MET)	225942267.184000	225942492.5637			
Observation end date	2005-02-28T01:43:23	2005-02-28T01:48:12			
Read mode	TIMED	TIMED			

2.3 Aspect

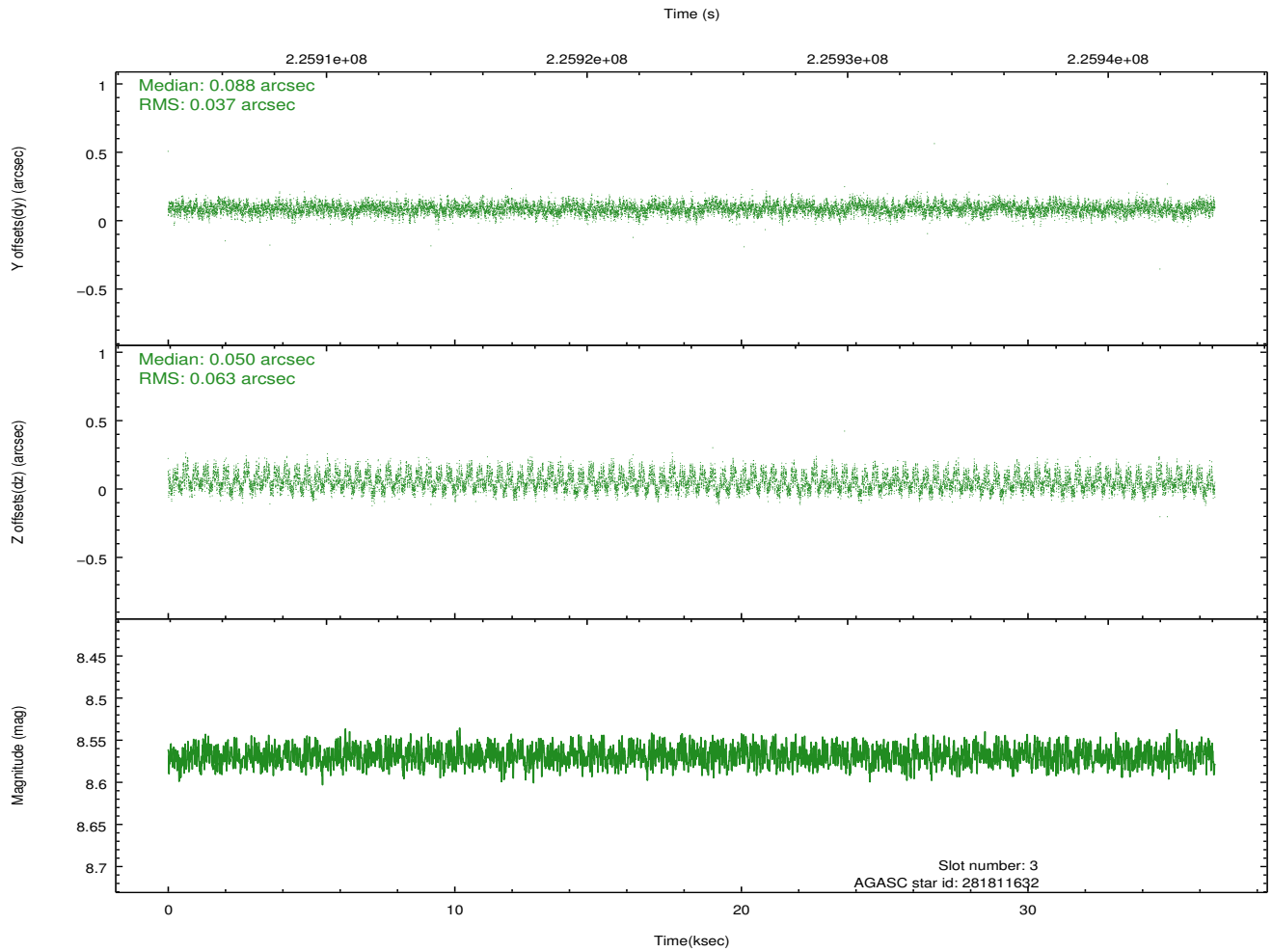
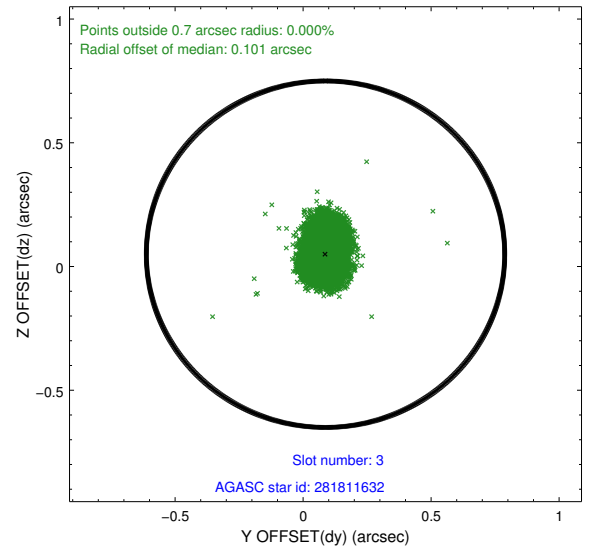
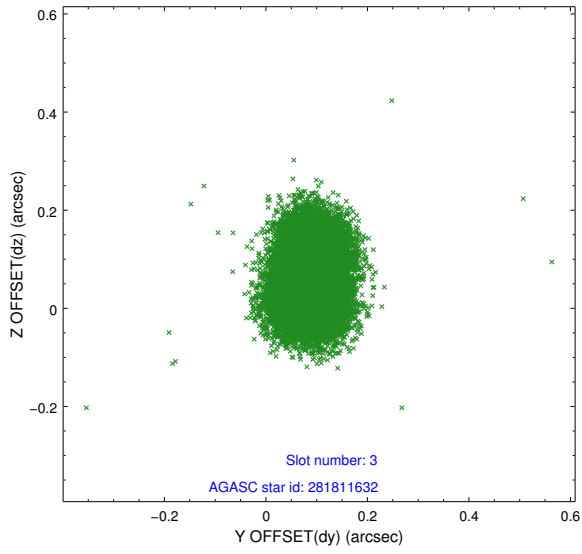


Slot Statistics

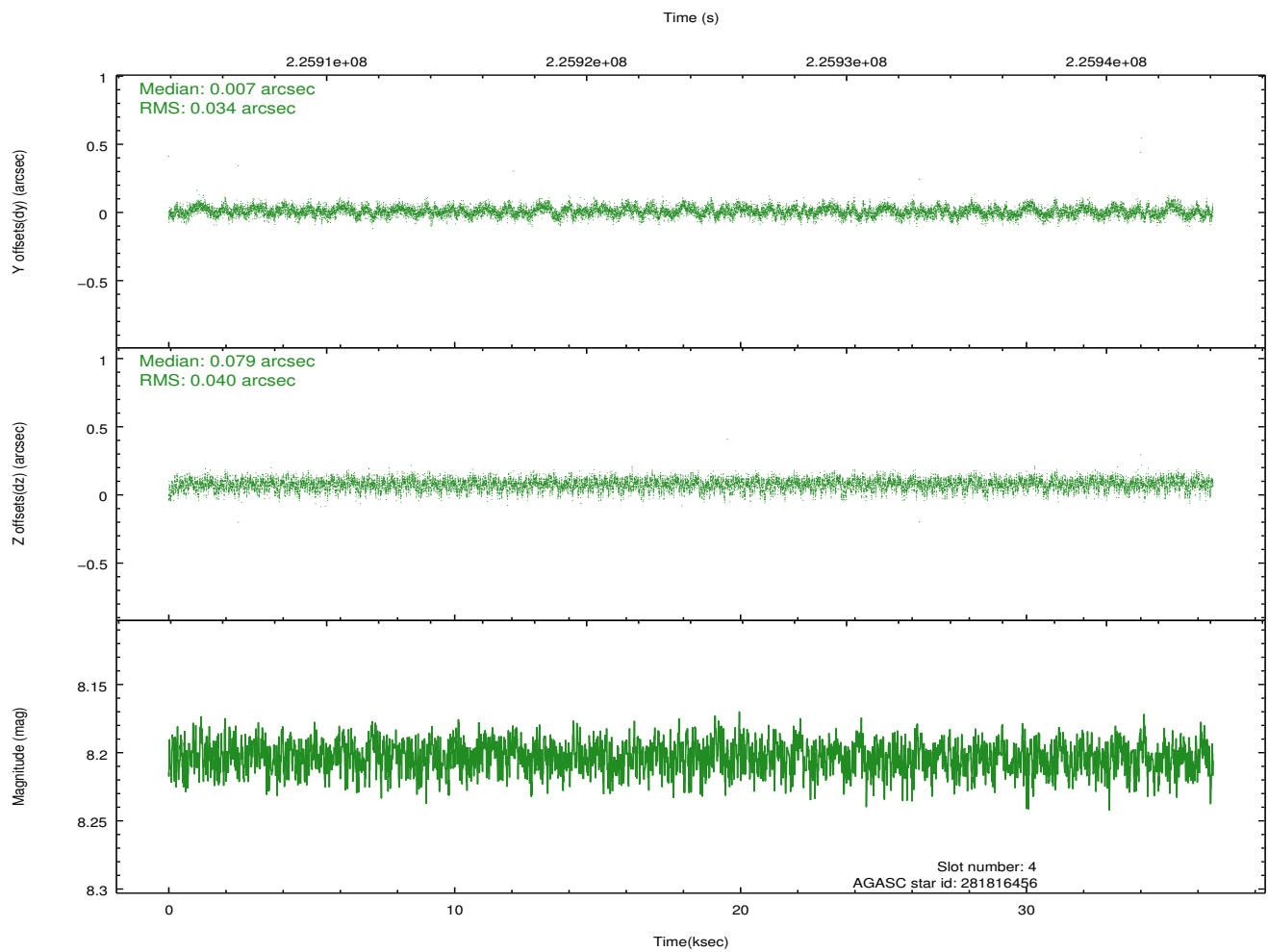
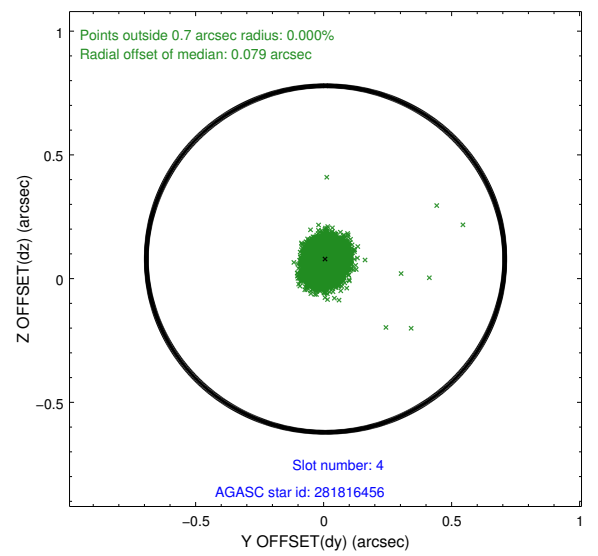
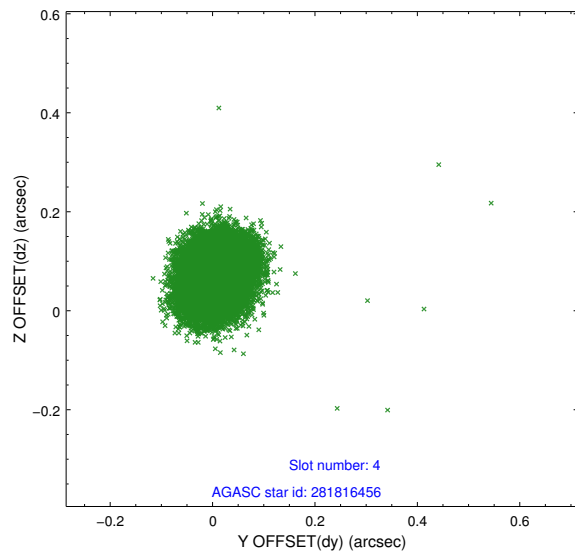
slot	status	id	mag	n_pts	med_dy	med_dz	dr1	dr2	ra	dec	mean_y	mean_z
0	FID	ACIS-S-2	7.10	8910	-0.046	-0.020	0.011	0.030	0.000000	0.000000	-759.81	-1731.53
1	FID	ACIS-S-4	7.21	8910	0.081	0.028	0.008	0.014	0.000000	0.000000	2153.54	177.02
2	FID	ACIS-S-5	7.23	8910	-0.067	0.001	0.009	0.028	0.000000	0.000000	-1812.67	170.63
3	GUIDE	281811632	8.57	17814	0.088	0.050	0.078	0.124	293.312173	29.710666	-805.63	-1406.47
4	GUIDE	281816456	8.20	17814	0.007	0.079	0.056	0.091	293.134806	29.851343	-671.69	-667.85
5	GUIDE	281817520	9.16	17812	0.064	0.020	0.083	0.132	293.098850	29.639023	-1378.95	-978.64
6	GUIDE	348027672	8.93	17816	-0.153	-0.162	0.060	0.098	293.028842	30.787352	2008.92	1399.92
7	GUIDE	348018632	8.79	17810	-0.004	0.014	0.064	0.105	293.088798	30.882026	2396.49	1424.05

2.4 Star Slots

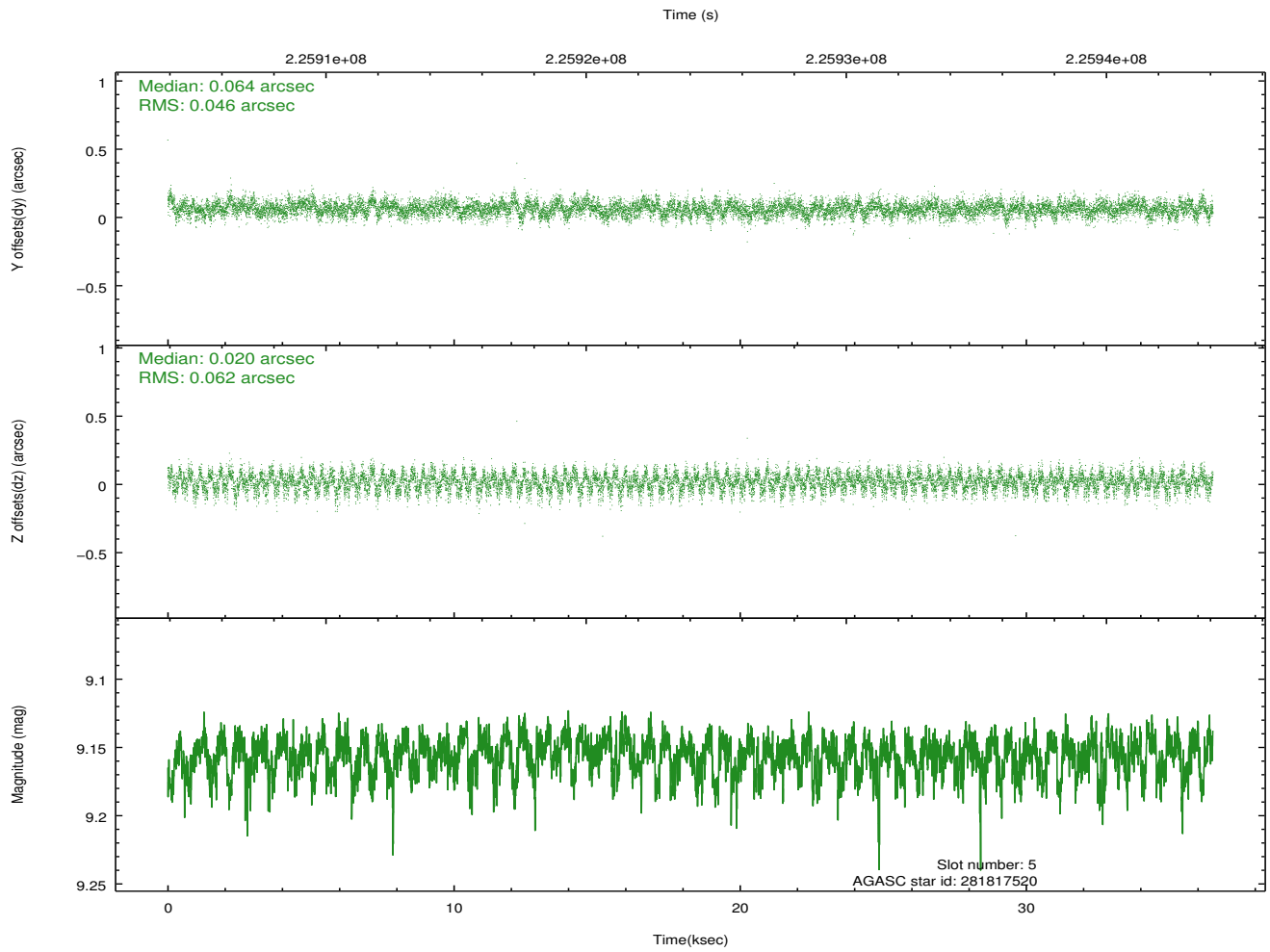
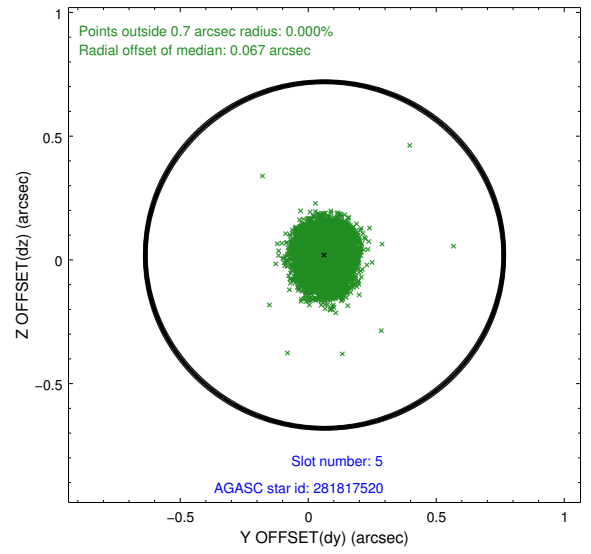
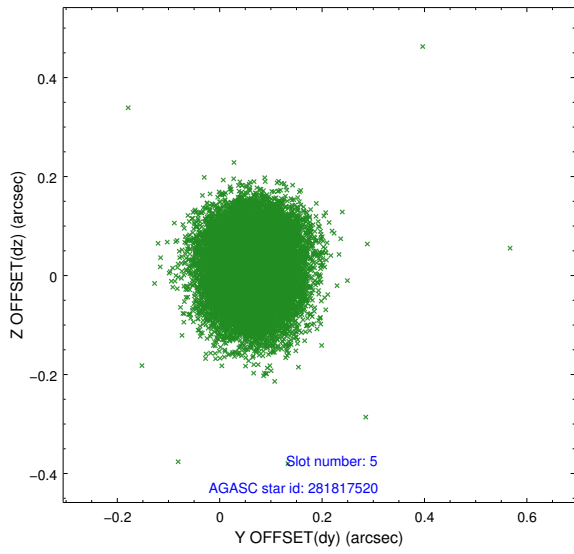
2.4.1 Slot 3



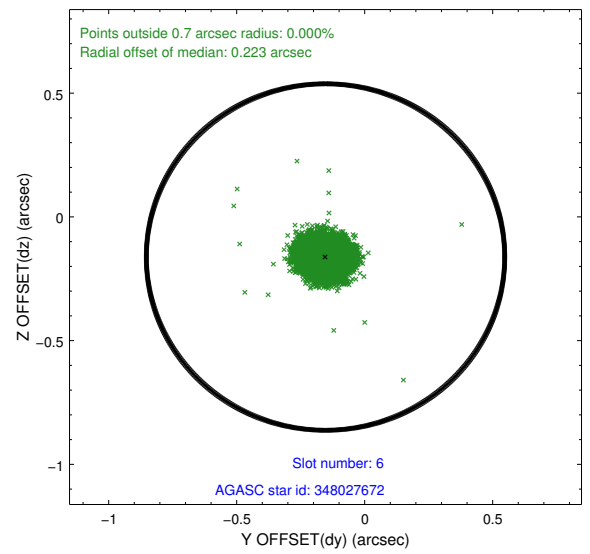
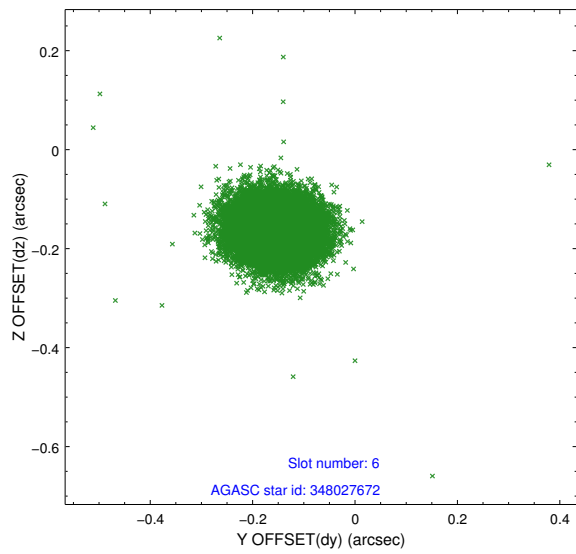
2.4.2 Slot 4



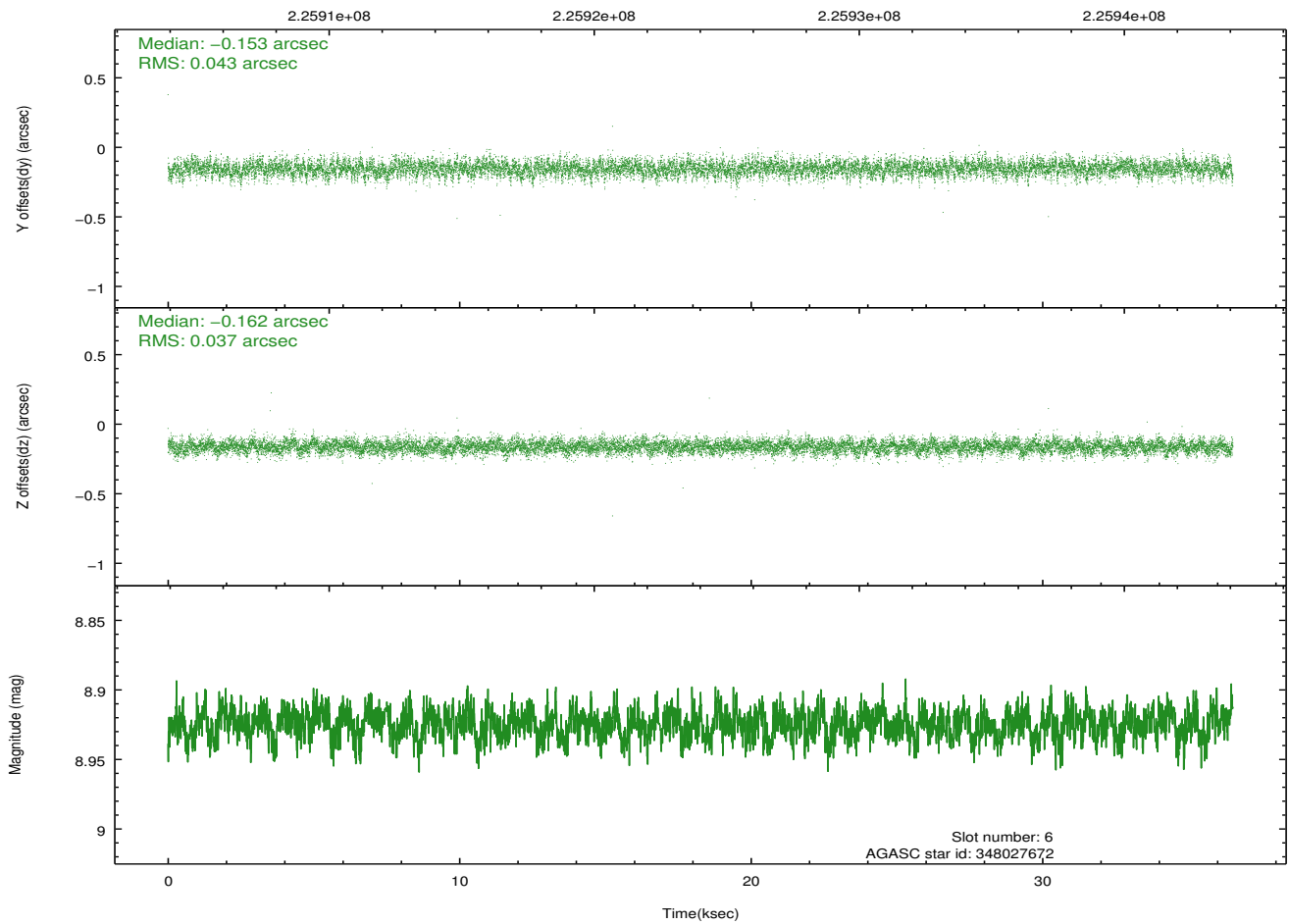
2.4.3 Slot 5



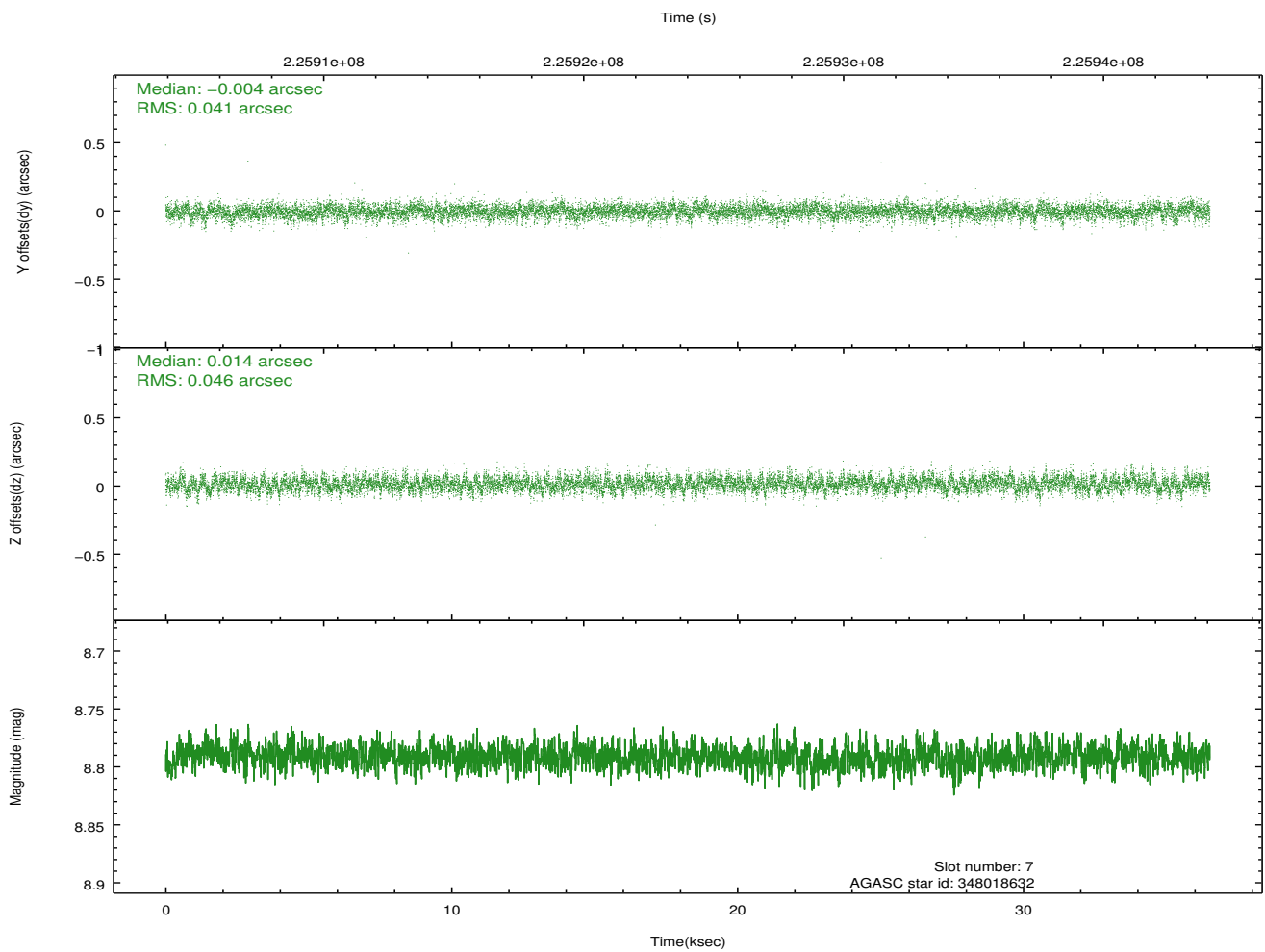
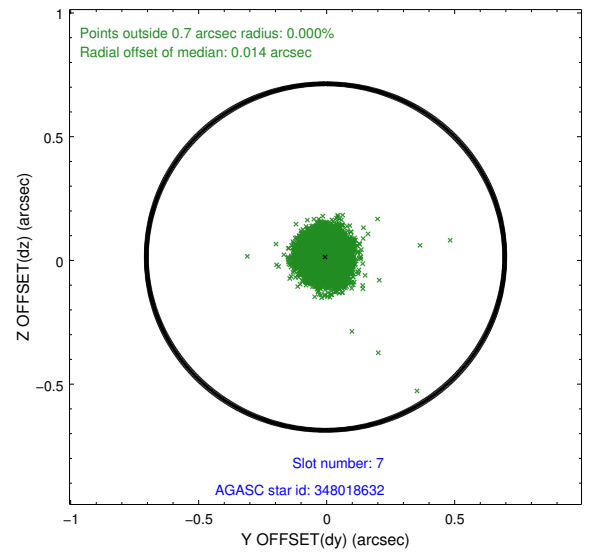
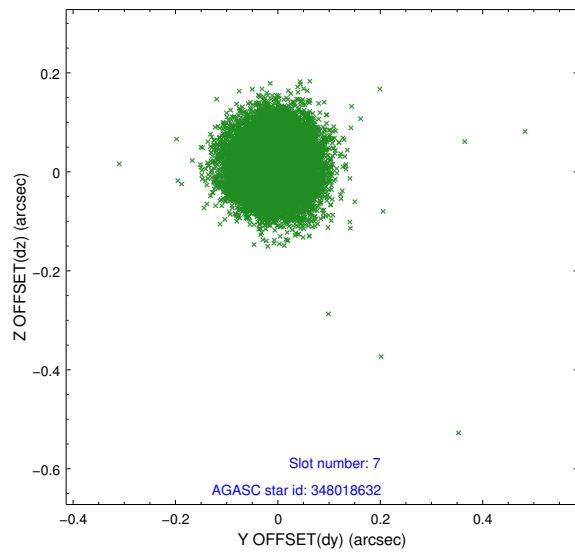
2.4.4 Slot 6



Time (s)

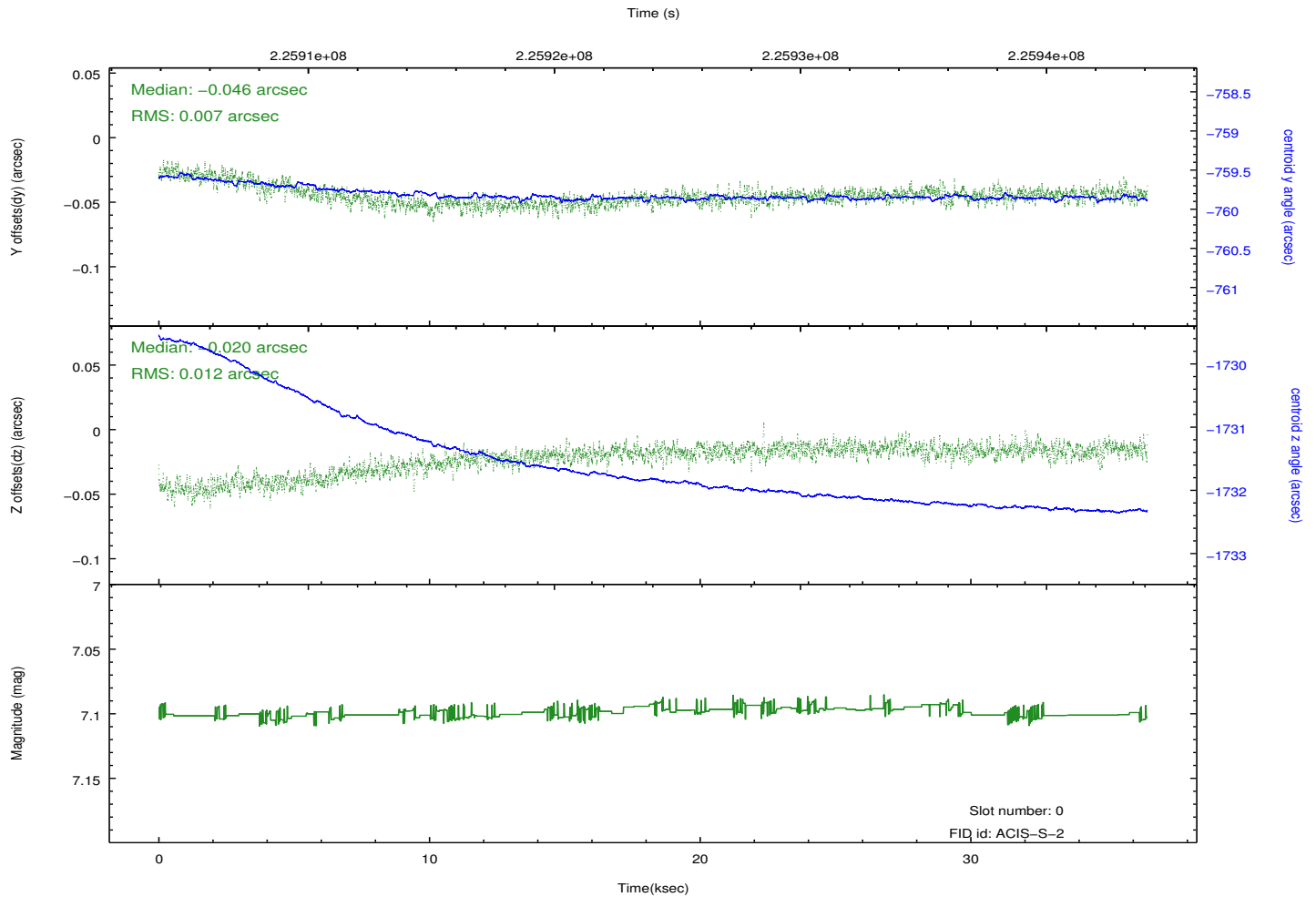
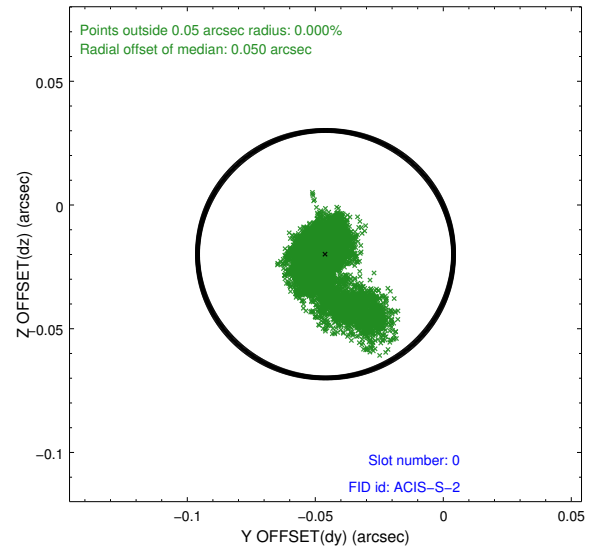
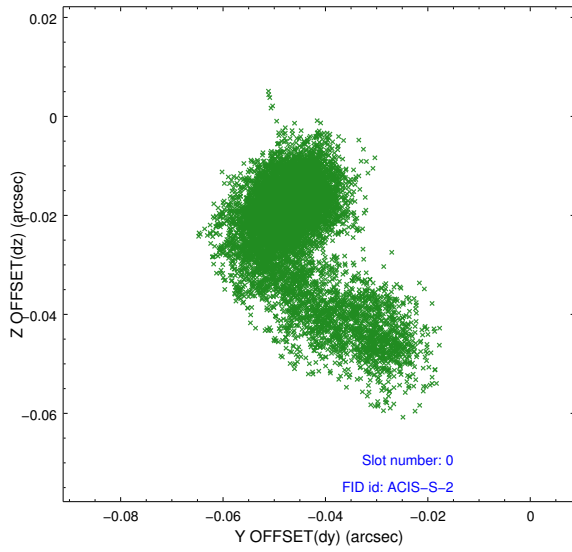


2.4.5 Slot 7

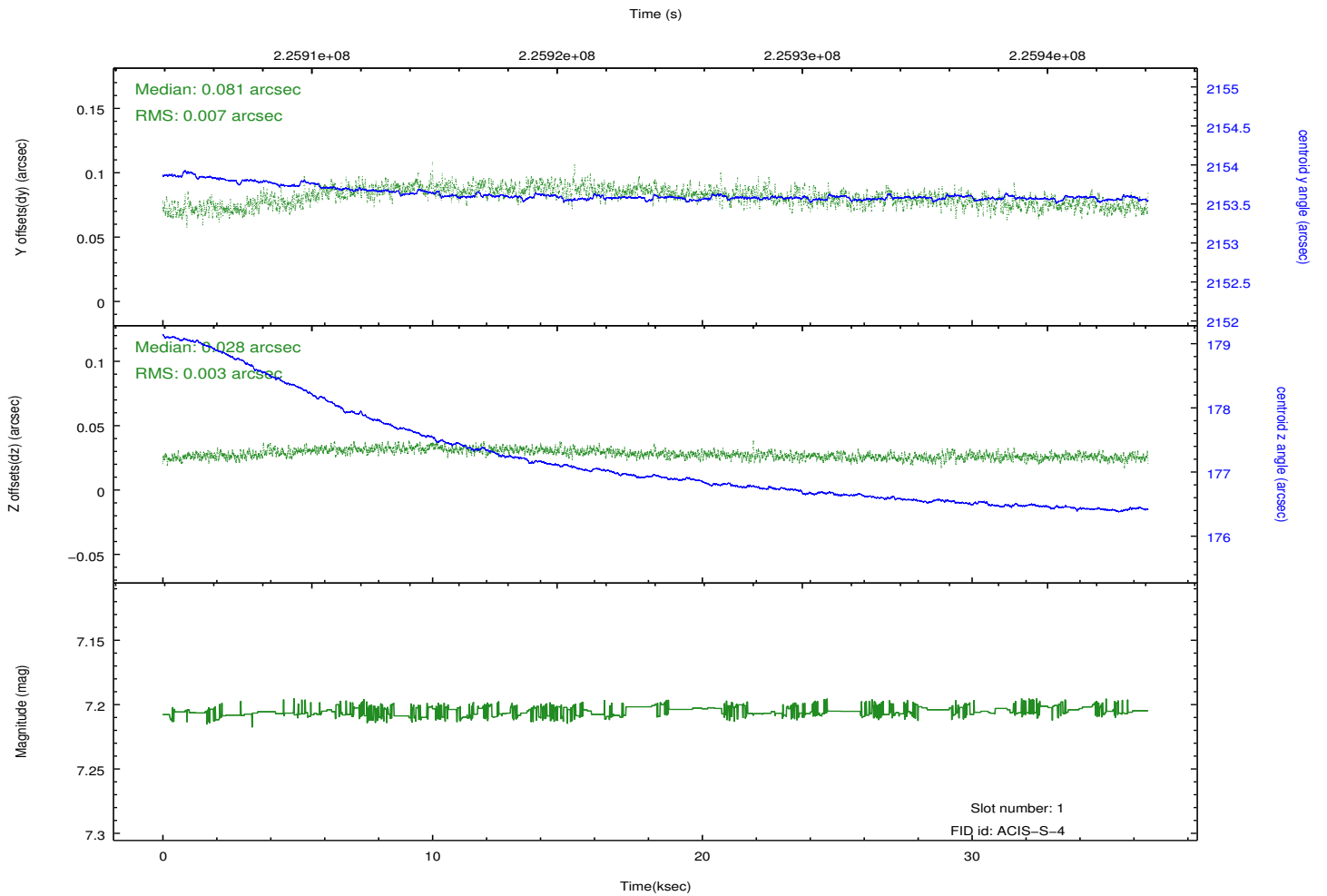
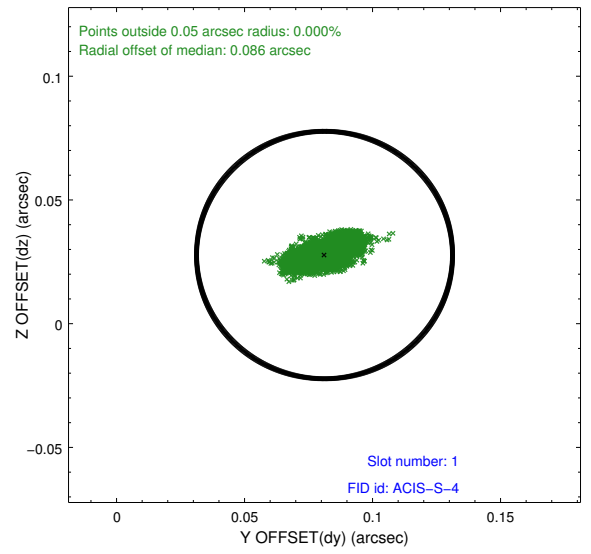
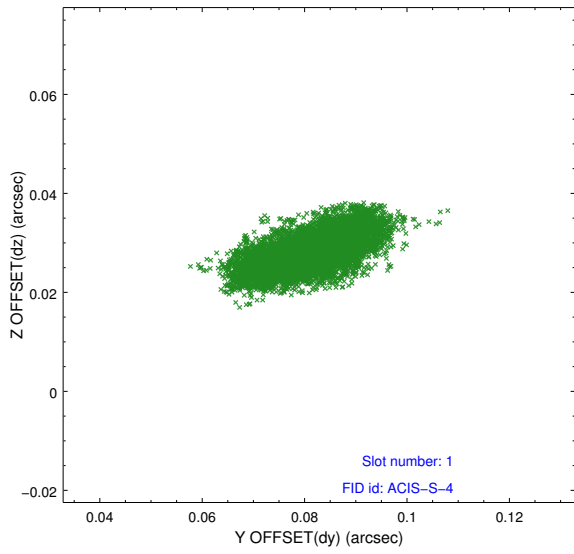


2.5 FID Slots

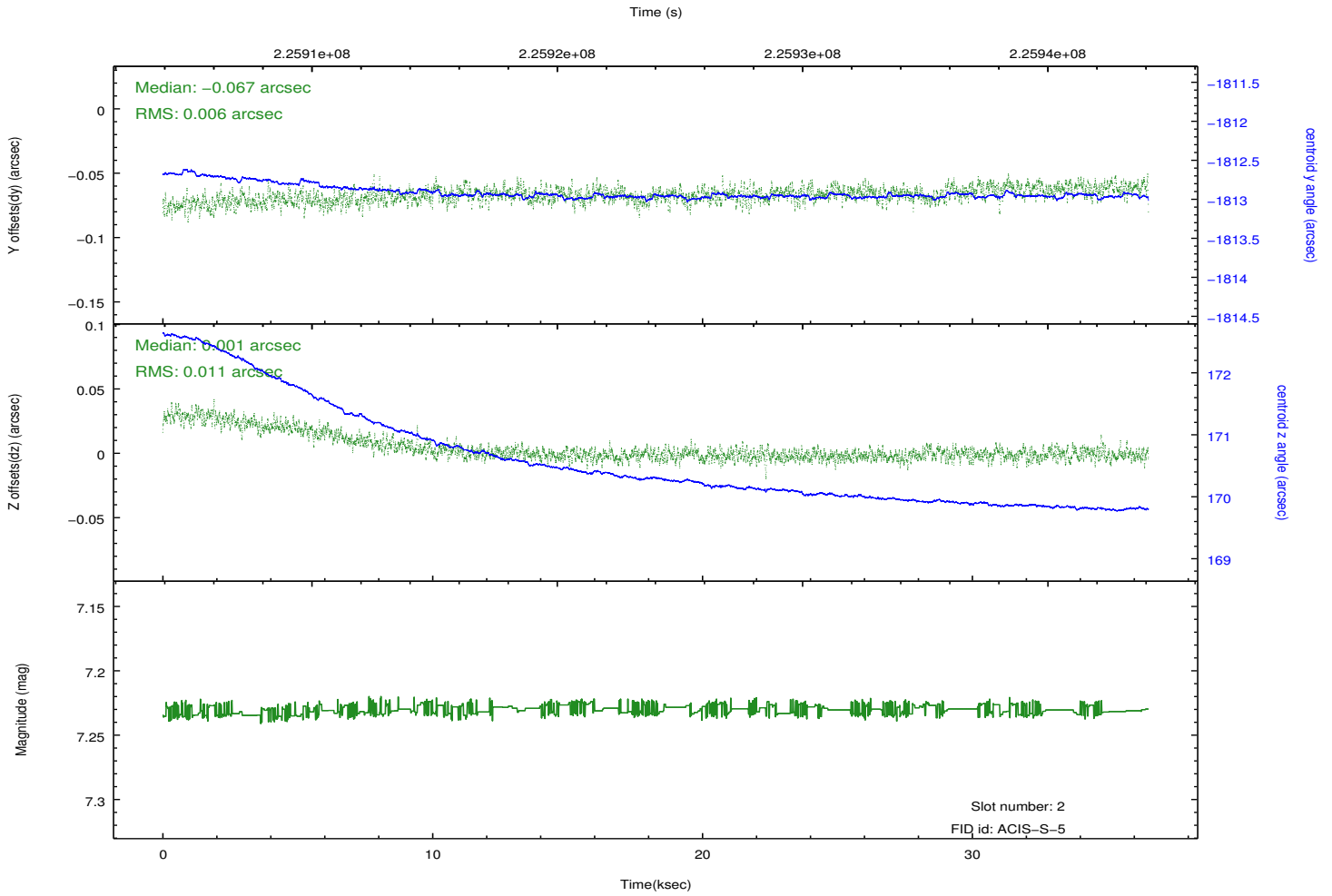
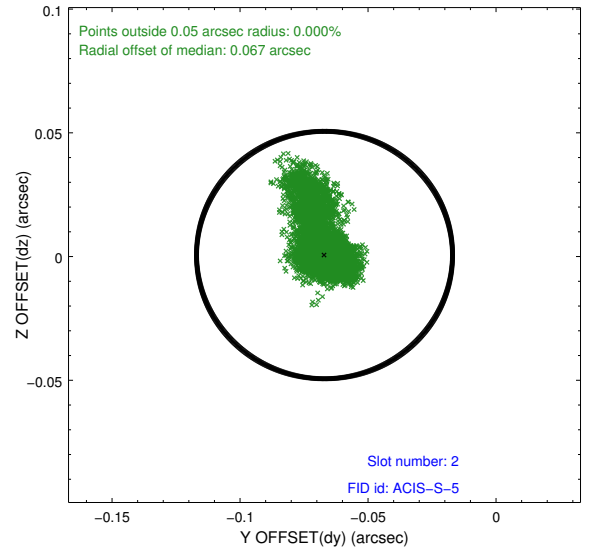
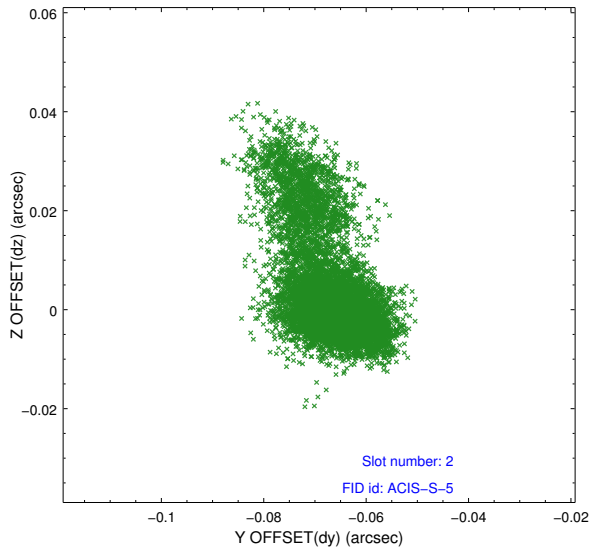
2.5.1 Slot 0



2.5.2 Slot 1



2.5.3 Slot 2



A Summary

A.1 Status

V&V Scientist	Jen Lauer
V&V Date (YYYY-MM-DD)	2013.01.11
V&V Edition	1
V&V Disposition and Status	OK
V&V Charge Time	35.99999

A.2 Comments