

V&V Reference Report

L2 ASCDS Version : 8.4.3

Observation 55647 - L2 Version 2
Chandra X-Ray Center

L2 Processing Date : Feb 4 2012

Contents

1	Front	2
2	OBI	3
2.1	OBI	3
2.1.1	Images	3
2.1.2	Bias	3
2.1.3	Parameters	4
2.1.4	Events	4
2.2	Compared Parameters	5
2.3	Star Slots	6
2.4	FID Slots	6
A	Summary	7
A.1	Status	7
A.2	Comments	7

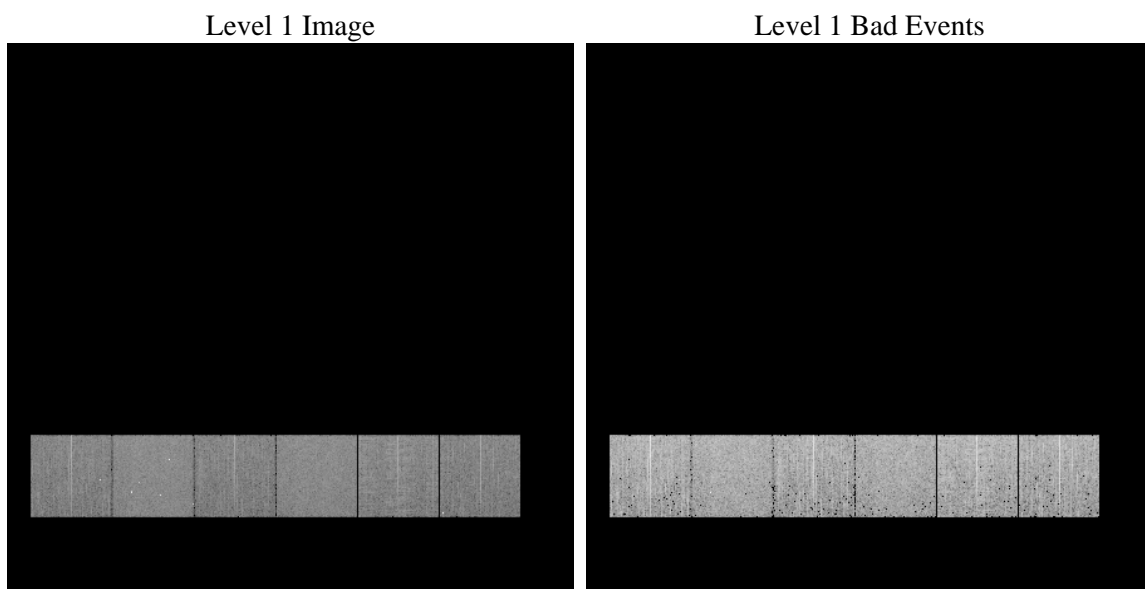
1 Front

seq_num	 	Sequence number
obs_id	55647	Observation id
title	ACIS-456789 diagnostics	Proposal title
observer	CHANDRA engineering request/realtime commanding	Principal investig
object	 	Source name
dtycle	0	
cycle	P	events from which exps? Prim/Second/Both
ra_targ	0.0	Observer's specified target RA [deg]
dec_targ	0.0	Observer's specified target Dec [deg]
ra_nom	179.73887481468	Nominal RA [deg]
dec_nom	11.70716774103	Nominal Dec [deg]
roll_nom	99.022662850148	Nominal Roll [deg]
revision	2	Processing version of data
ontime	4044.7999849916	Sum of GTIs [s]
livetime	3993.5822920954	Livetime [s]
ontime4	4044.7999849916	Sum of GTIs [s]
ontime5	4044.7999849916	Sum of GTIs [s]
ontime6	4044.7999849916	Sum of GTIs [s]
ontime7	4044.7999849916	Sum of GTIs [s]
ontime8	4044.7999849916	Sum of GTIs [s]
ontime9	4044.7999849916	Sum of GTIs [s]
l2events	179703	Number of level 2 events

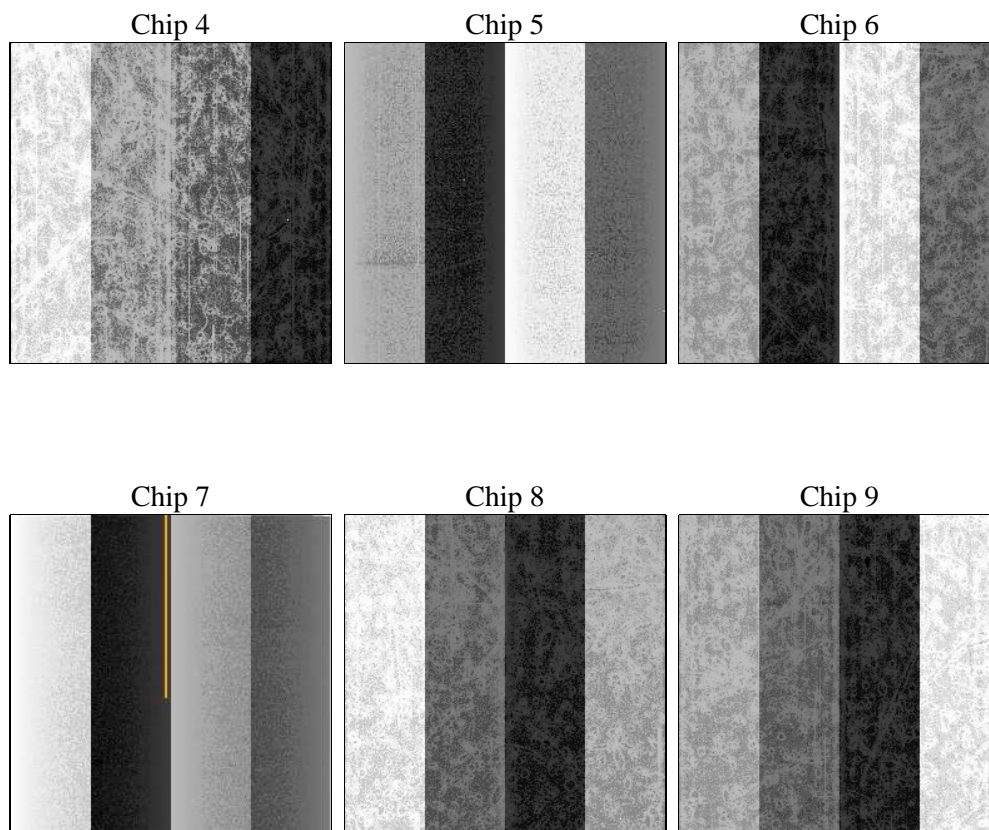
2 OBI

2.1 OBI

2.1.1 Images



2.1.2 Bias



2.1.3 Parameters

obi_num	0	Obi number	sched_exp_time	0.0	[s] Scheduled observation exposure time
ascdsver	8.4.3	Processing system revision	ontime	4044.7999849916	Sum of GTIs [s]
caldbver	4.4.7	 	ontime4	4044.7999849916	Sum of GTIs [s]
date	2012-02-04T07:45:58	Date and time of file creation	ontime5	4044.7999849916	Sum of GTIs [s]
revision	2	Processing version of data	ontime6	4044.7999849916	Sum of GTIs [s]
			ontime7	4044.7999849916	Sum of GTIs [s]
			ontime8	4044.7999849916	Sum of GTIs [s]
			ontime9	4044.7999849916	Sum of GTIs [s]
			l1events	411119	Number of level 1 events

2.1.4 Events

	ccd 4	ccd 5	ccd 6	ccd 7	ccd 8	ccd 9
level 1 events	62910	80056	60404	75035	70993	61721
rejected events	36873	34351	33512	32900	38812	34673
rejected %	58%	42%	55%	43%	54%	56%

	ccd 4	ccd 5	ccd 6	ccd 7	ccd 8	ccd 9
grade 0 events	15328	7290	14175	6972	15664	13802
	24%	9%	23%	9%	22%	22%
grade 1 events	141	226	80	51	91	92
	0%	0%	0%	0%	0%	0%
grade 2 events	3981	15944	4978	9422	6328	5811
	6%	19%	8%	12%	8%	9%
grade 3 events	1907	1745	1788	3714	2353	1787
	3%	2%	2%	4%	3%	2%
grade 4 events	1823	1727	1788	3855	2311	1739
	2%	2%	2%	5%	3%	2%
grade 5 events	1979	4073	1961	4982	2648	2267
	3%	5%	3%	6%	3%	3%
grade 6 events	3319	19538	4472	18675	5921	4234
	5%	24%	7%	24%	8%	6%
grade 7 events	34432	29513	31162	27364	35677	31989
	54%	36%	51%	36%	50%	51%

2.2 Compared Parameters

Parameter	Planned	Actual	Parameter	Planned	Actual
Instrument	ACIS	ACIS	Obspar format version number	7	7
Detector	ACIS-456789	ACIS-456789	Obspar file type	PREDICTED	ACTUAL
Grating	NONE	NONE	Obspar update status	OVERRIDE	OVERRIDE
Data mode	FAINT	FAINT	Number of optional ACIS chips dropped	0	0
Observation mode	SECONDARY	SECONDARY	On-chip summing requested	N	N
[deg] Pointing RA	0	179.7388748146826	Subarray requested	NONE	NONE
[deg] Pointing Dec	0	11.70716774103015	Alternating exposures requested	N	N
[deg] Pointing Roll	0.0	99.0226628501477	[s] Primary exposure time	3.2	3.2
[mm] SIM focus pos	-1.4281808131	-1.4281808131			
[mm] SIM defocus	0.1051557500557434	0.1051557500557434			
[mm] SIM translation stage pos	250.4660330802	250.4660330802			
[mm] SIM translation stage offset	-0.01005726120527584	-0.01005726120527584			
[s] Observation start time (MET)	414211676.066134	414211676.066134			
Observation start date	2011-02-16T02:47:56	2011-02-16T02:47:56			
[s] Observation end time (MET)	414217552.722599	414217552.722599			
Observation end date	2011-02-16T04:25:53	2011-02-16T04:25:52			
Read mode	TIMED	TIMED			

2.3 Star Slots

2.4 FID Slots

A Summary

A.1 Status

V&V Scientist	Jen Lauer
V&V Date (YYYY-MM-DD)	2012.02.07
V&V Edition	1
V&V Disposition and Status	OK
V&V Charge Time	4.0447999849916

A.2 Comments